

BUILDING FOR EXCELLENCE



January 2025

Bond Report



New Middle School 1 South

CONSTRUCTION
Capital Improvement Program
JANUARY 2025
BOND REPORT

ACTIVE PROJECT SUMMARY SHEETS

PROJECT STATUS

PROCUREMENT

MWSBE

- 2017 MWSBE Participation Commitments
- 2023 MWSBE Participation Commitments

FINANCIALS

- Bond Progress Summary
- Budget Status Reports
 - 2017 Bond Series
 - 2023 Bond Series

2023 BOND BY BOARD DISTRICT

BOND WEBSITE/SOCIAL MEDIA

PROJECT SUMMARY SHEETS



Project Information

Bond Program	2017 Bond
Facility Name	Ballantyne Ridge High School (17)
Address	4004 Toringdon Way Charlotte, NC 28277
Architect	Ratio
Construction Manager	Messer
Percent Complete	99%
Occupy On	August 2024

Scope of Work

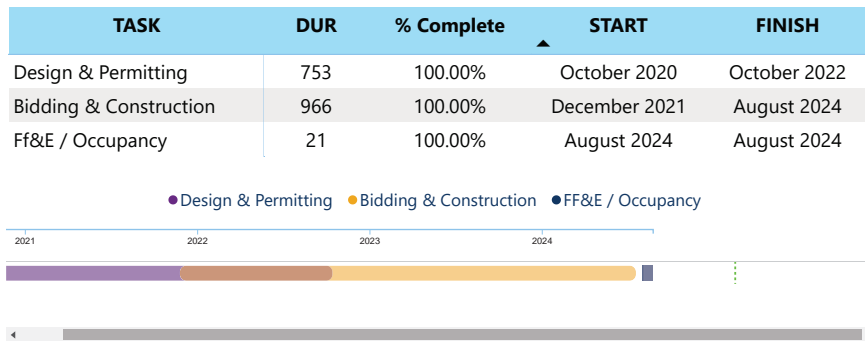
New 100-classroom high school to relieve South Mecklenburg, Ardrey Kell and Myers Park HS.

Project Status

The Ballantyne Ridge High School project team continues to work through miscellaneous site activities, finalize punch list, commissioning activities, financial reconciliation and closeout documents.



Schedule



Financial Summary

Financial Summary

Budget

Contracts

Expenditures

MWSBE

FACILITY	BUDGET	TOTAL COMMITTED	TO BE COMMITTED	PAID TO DATE	MWSBE %
Ballantyne Ridge High School	\$158,621,503	\$157,793,421	\$825,168	\$146,497,979	18.30%



Project Information

Bond Program	2023 Bond
Facility Name	Berryhill School (23)
Address	TBD
Architect	
Construction Manager	
Percent Complete	0%
Occupy On	August 2028

Scope of Work

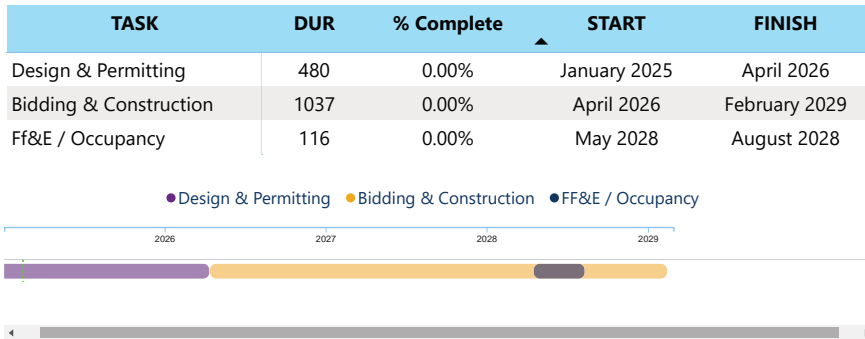
Offsite replacement and demolish existing building.

Project Status

Due diligence activities are underway. Request for Qualifications for Architects and Construction Managers is underway.



Schedule



Financial Summary

Financial Summary

- Budget
- Contracts
- Expenditures
- MWSBE

FACILITY	BUDGET	TOTAL COMMITTED	TO BE COMMITTED	PAID TO DATE	MWSBE %
Berryhill School	\$104,286,451	\$3,921,765	\$100,364,686	\$0	



Project Information

Bond Program	2023 Bond
Facility Name	Beverly Woods Elementary School (23)
Address	6001 Quail Hollow Road Charlotte, NC 28210
Architect	
Construction Manager	
Percent Complete	0%
Occupy On	August 2028

Scope of Work

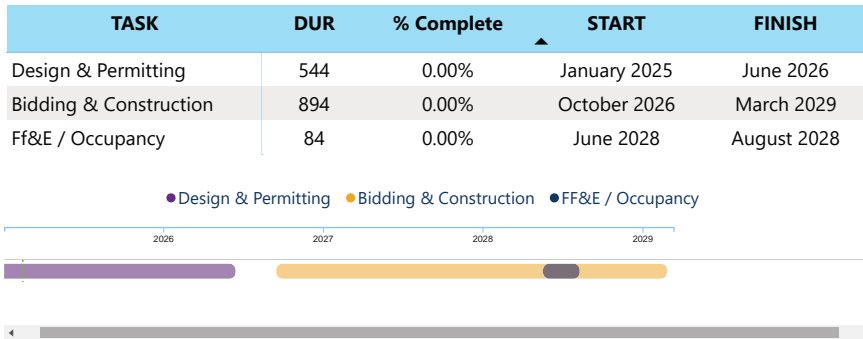
Onsite replacement with 45-classroom baseline school.

Project Status

Due diligence activities are underway. Request for Qualifications for Architects and Construction Managers is underway.



Schedule



Financial Summary

Financial Summary

Budget

Contracts

Expenditures

MWSBE

FACILITY	BUDGET	TOTAL COMMITTED	TO BE COMMITTED	PAID TO DATE	MWSBE %
Beverly Woods Elementary School	\$71,237,699	\$2,718,364	\$68,519,335	\$48,824	



Project Information

Bond Program	2017 Bond
Facility Name	Bruns Avenue Elementary School (17)
Address	501 South Bruns Avenue Charlotte, NC 28208
Architect	ADW
Construction Manager	Edifice
Percent Complete	96%
Occupy On	August 2024

Scope of Work

New 45-classroom elementary school (K-5); replaces old school built in 1969.

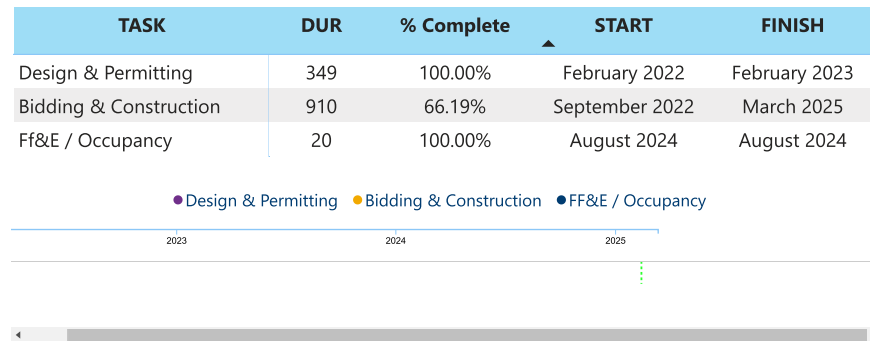


Project Status

The Bruns Avenue Elementary School Replacement project is currently in Phase 2 site work. This includes underground utilities, mass grading and placement of hardscapes and landscapes for the permanent parking lot and playgrounds. The project team remains in constant communication with the Principal to ensure grading activities do not impact school activities. Phase 2 work will continue through spring of 2025.



Schedule



Financial Summary

Financial Summary

Budget

Contracts

Expenditures

MWSBE

FACILITY	BUDGET	TOTAL COMMITTED	TO BE COMMITTED	PAID TO DATE	MWSBE %
Bruns Academy Replacement	\$48,859,580	\$46,383,483	\$2,503,826	\$39,380,078	34.18%



Project Information

Bond Program	2023 Bond
Facility Name	Huntersville Elementary School (23)
Address	200 Gilead Road Huntersville, NC 28078
Architect	
Construction Manager	
Percent Complete	0%
Occupy On	August 2028

Scope of Work

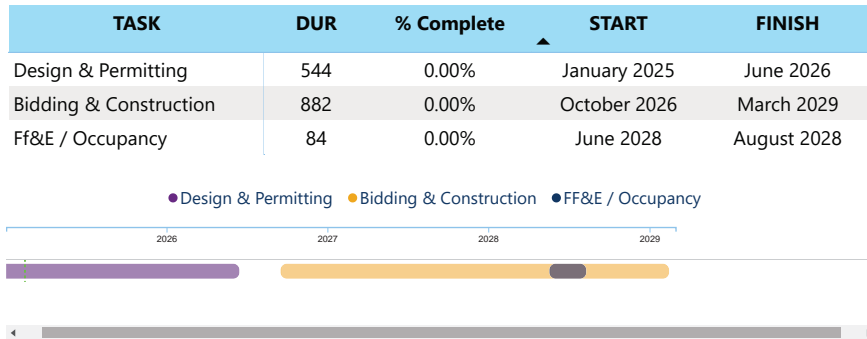
Onsite replacement with 45-classroom baseline facility.

Project Status

Due diligence activities are underway. Request for Qualifications for Architects and Construction Managers are underway.



Schedule



Financial Summary

Financial Summary

Budget

Contracts

Expenditures

MWSBE

FACILITY	BUDGET	TOTAL COMMITTED	TO BE COMMITTED	PAID TO DATE	MWSBE %
Huntersville Elementary School	\$66,235,904	\$144,376	\$66,091,528	\$4,940	



Project Information

Bond Program	2017 Bond
Facility Name	Knights View Elementary School (17)
Address	11000 Beau Riley Road Charlotte, NC 28277
Architect	Little Diversified Architects
Construction Manager	Balfour Beatty
Percent Complete	99%
Occupancy On	August 2024

Scope of Work

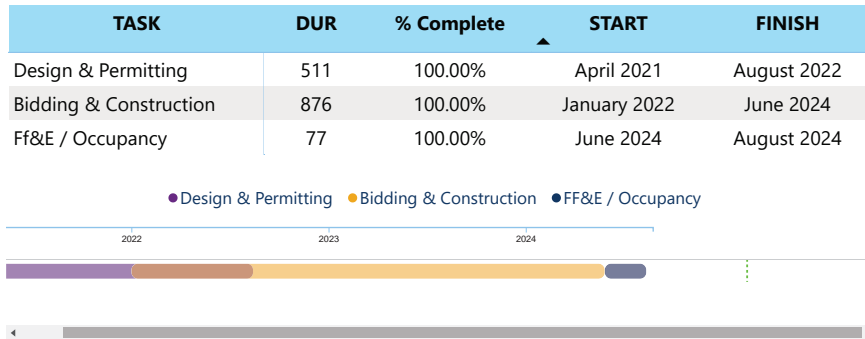
New 45-classroom elementary school to relieve Elon, Hawk Ridge, Polo.



Project Status

The Knights View Elementary School team continues to finalize financial and closeout documents.

Schedule



Financial Summary

Financial Summary

- Budget
- Contracts
- Expenditures
- MWSBE

FACILITY	BUDGET	TOTAL COMMITTED	TO BE COMMITTED	PAID TO DATE	MWSBE %
Knights View Elementary School - Elon/Hawk Ridge Relief	\$59,997,683	\$53,198,825	\$6,798,858	\$51,113,813	46.38%



Project Information

Bond Program	2023 Bond
Facility Name	Marie G Davis Montessori Upfit (23)
Address	3351 Griffith Street Charlotte, NC 28203
Architect	MPS
Construction Manager	TBD - Hard Bid
Percent Complete	0%
Occupy On	August 2026

Scope of Work

Convert to 7-12 Montessori to replace use at J.T. Williams and expand program.



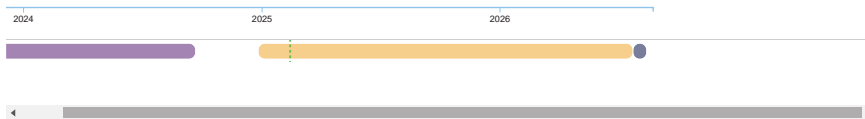
Project Status

The Marie G. Davis Montessori Upfit project will receive bids in early February. The project scope includes miscellaneous renovations and the conversion of the existing facility to a Montessori 7-12 facility including the incorporation of a security vestibule, makerspace, theatrical classroom, life skills classroom, exterior elements, renovations and upfit of classrooms to a primary school environment to accommodate secondary school students.

Schedule

TASK	DUR	% Complete	START	FINISH
Design & Permitting	335	93.56%	November 2023	October 2024
Bidding & Construction	574	0.00%	January 2025	August 2026
Ff&E / Occupancy	20	0.00%	August 2026	August 2026

● Design & Permitting ● Bidding & Construction ● FF&E / Occupancy



Financial Summary

Financial Summary

Budget

Contracts

Expenditures

MWSBE

FACILITY	BUDGET	TOTAL COMMITTED	TO BE COMMITTED	PAID TO DATE	MWSBE %
Marie G Davis Montessori Upfit	\$9,174,783	\$1,123,215	\$8,051,568	\$394,277	28.56%



Project Information

Bond Program	2023 Bond
Facility Name	New Middle School 1 South (23)
Address	5400 Campe Verde Lane Charlotte, NC 28277
Architect	Hord Coplan Macht, Inc.
Construction Manager	Messer Construction Company
Percent Complete	3%
Occupy On	August 2026

Scope of Work

Baseline 54-classroom Middle School facility to relieve Community House MS, Jay M. Robinson MS and Rea Farms STEAM K-8.

Project Status

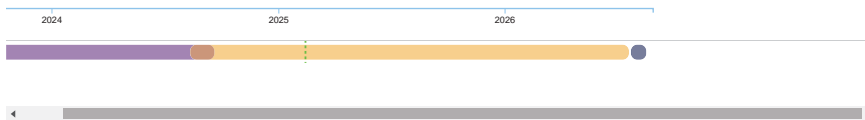
The New South Middle School 1 project continues with the site work contractor installing the Phase 1 erosion control and beginning mass grading operations. Installation of construction perimeter fencing and gates is complete. The building permitting process continues. Utilities including gas and power have been turned off and removed from the site. The project consists of a new 54-classroom middle school.



Schedule

TASK	DUR	% Complete	START	FINISH
Design & Permitting	383	95.39%	September 2023	September 2024
Bidding & Construction	708	2.65%	August 2024	July 2026
Ff&E / Occupancy	25	0.00%	August 2026	August 2026

● Design & Permitting ● Bidding & Construction ● FF&E / Occupancy



Financial Summary

Financial Summary

Budget

Contracts

Expenditures

MWSBE

FACILITY	BUDGET	TOTAL COMMITTED	TO BE COMMITTED	PAID TO DATE	MWSBE %
New Middle School #1 South	\$101,089,262	\$69,052,400	\$32,036,862	\$2,854,027	19.31%



Project Information

Bond Program	2023 Bond
Facility Name	New Middle School 2 North (23)
Address	13832 Stumptown Road Huntersville, NC
Architect	
Construction Manager	
Percent Complete	0%
Occupy On	August 2028

Scope of Work

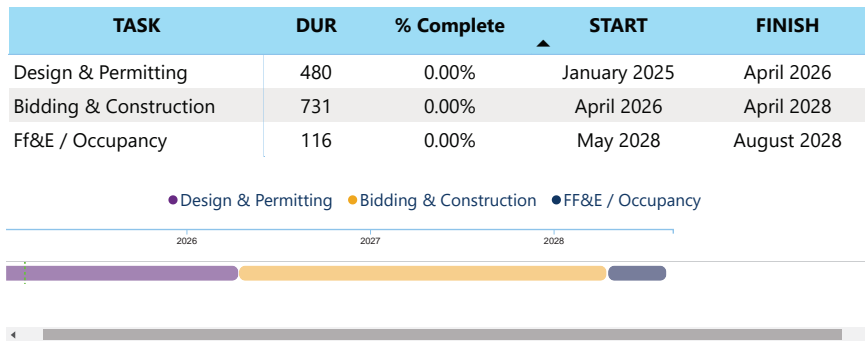
Baseline 54-classroom facility at Stumptown Road to relieve Bailey Road, Bradley and J.M. Alexander middle schools.

Project Status

Due diligence activities are underway. Request for Qualifications for Architects and Construction Managers are underway.



Schedule



Financial Summary

Financial Summary

- Budget
- Contracts
- Expenditures
- MWSBE

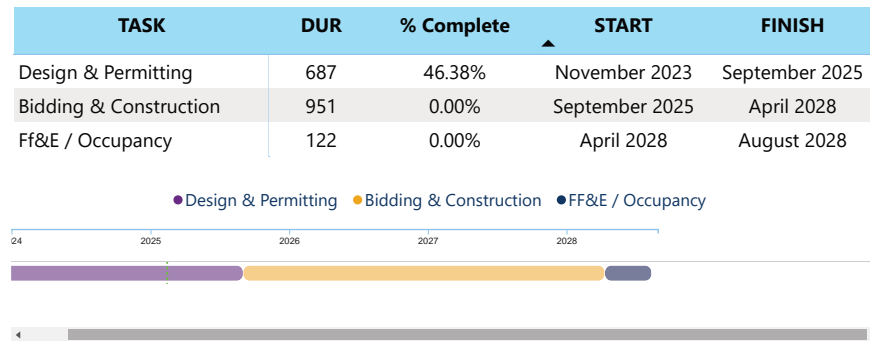
FACILITY	BUDGET	TOTAL COMMITTED	TO BE COMMITTED	PAID TO DATE	MWSBE %
New Middle School #2 North	\$92,371,482	\$3,493,536	\$88,877,946	\$57,949	



Project Information

Bond Program	2023 Bond
Facility Name	New Second Ward High School (23)
Address	700 E Martin Luther King Jr. Blvd Charlotte, North Carolina 28202
Architect	LS3P Associates
Construction Manager	Rodgers Builders, Inc. in Association with Walter B. Davis Company
Percent Complete	0%
Occupancy	August 2028

Schedule



Scope of Work

Full magnet high school on old Metro site; relocate program from Hawthorne site.



Project Status

The New Second Ward High School design development phase documents have been submitted to CMS for review. A project update meeting is scheduled February 27. The new medical high school project consists of classrooms with a focus in health curriculum. The demolition of old Metro School continues. Site clearing is nearly complete; the old Morgan building has been completely demolished and the CM is finishing grading and stabilization. Once the site is cleared (spring 2025), additional geotechnical testing will occur in preparation for the start of construction of the new school which is scheduled for early 2026.



Financial Summary

Financial Summary

Budget

Contracts

Expenditures

MWSBE

FACILITY	BUDGET	TOTAL COMMITTED	TO BE COMMITTED	PAID TO DATE	MWSBE %
New Second Ward High School	\$176,810,460	\$16,019,138	\$160,791,322	\$2,691,887	12.45%



Project Information

Bond Program	2023 Bond
Facility Name	North Mecklenburg High School Replacement (23)
Address	Old Statesville Road Huntersville, NC 28078
Architect	ADW Architects
Construction Manager	New Atlantic Contracting, Inc.
Percent Complete	0%
Occupy On	August 2028

Scope of Work

Onsite replacement of balance of campus and comprehensive athletics package.

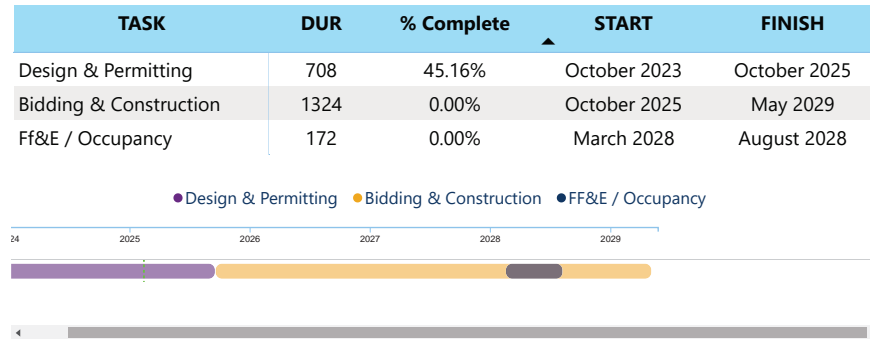


Project Status

The North Mecklenburg High School Replacement project continues to progress in the construction document phase. The Town of Huntersville requires a public project meeting, which is planned in February. As the design progresses, the construction manager continues to update logistics plans required to safely execute and coordinate the complex construction project. The project provides a full replacement of the comprehensive high school.



Schedule



Financial Summary

Financial Summary

Budget

Contracts

Expenditures

MWSBE

FACILITY	BUDGET	TOTAL COMMITTED	TO BE COMMITTED	PAID TO DATE	MWSBE %
North Mecklenburg High School Replacement	\$228,464,171	\$17,962,628	\$210,501,543	\$4,534,916	8.07%



Project Information

Bond Program	2017 Bond
Facility Name	South Mecklenburg High School (17)
Address	8900 Park Road Charlotte, NC 28210
Architect	Morris Berg
Construction Manager	Balfour Beatty
Percent Complete	99%
Occupy On	January 2025

Scope of Work

Replace classroom building built in 1958 to upgrade learning conditions.

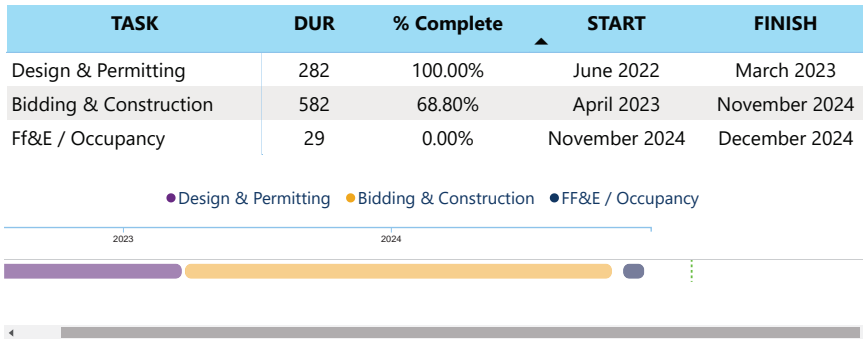


Project Status

The South Mecklenburg High School (17) project "Building X" FF&E have been installed, and the building was occupied at the end of January. The teachers and students are thrilled with the fresh, light, and airy space! The project team is continuing with closeout activities.



Schedule



Financial Summary

Financial Summary

Budget

Contracts

Expenditures

MWSBE

FACILITY	BUDGET	TOTAL COMMITTED	TO BE COMMITTED	PAID TO DATE	MWSBE %
South Mecklenburg HS	\$17,322,927	\$16,648,938	\$673,989	\$14,829,943	24.93%



Project Information

Bond Program	2023 Bond
Facility Name	South Mecklenburg High School Replacement (23)
Address	8900 Park Road Charlotte, NC 28210
Architect	Morris Berg Architects
Construction Manager	Whiting-Turner Contracting Company
Percent Complete	0%
Occupy On	August 2027

Scope of Work

Final phases of work, to include onsite replacement of balance of campus to +/- 100 classroom baseline, comprehensive athletics package.

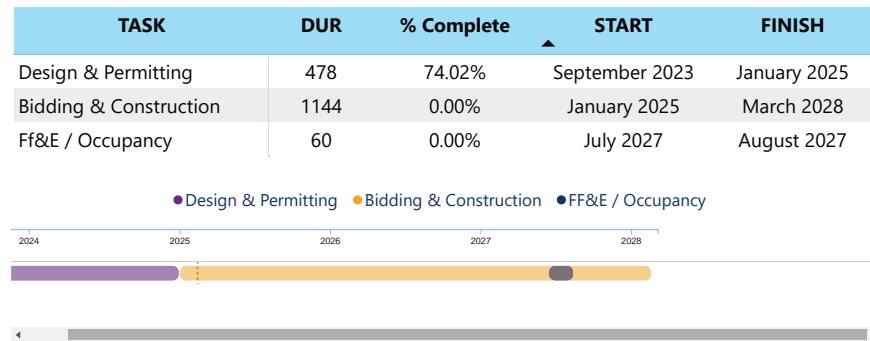


Project Status

The South Mecklenburg High School Replacement project continues to progress in the permit approval process. The construction manager completed the updated logistic plans to execute the project. The project consists of a partial campus replacement and significant improvements to the football stadium and athletic fields.



Schedule



Financial Summary

Financial Summary

Budget

Contracts

Expenditures

MWSBE

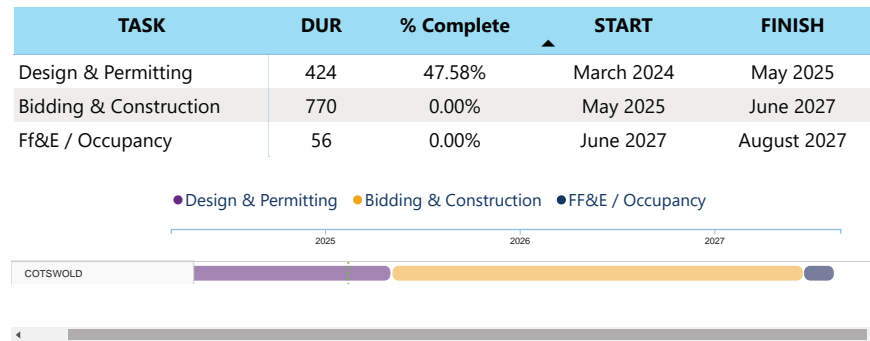
FACILITY	BUDGET	TOTAL COMMITTED	TO BE COMMITTED	PAID TO DATE	MWSBE %
South Mecklenburg High School Replacement	\$127,909,253	\$11,508,018	\$116,401,235	\$4,001,142	9.47%



Project Information

Bond Program	2023 Bond
Facility Name	Cotswold Elementary School (23)
Address	300 Greenwich Road Charlotte, NC 28211
Architect	Little Diversified
Construction Manager	Clancy & Theys in Partnership with The Daniele Company
Percent Complete	0%
Occupy On	August 2027

Schedule



Scope of Work

Onsite replacement, collapsing paired school into Billingsville for project duration.

Project Status

The Cotswold Elementary School Replacement project is currently in the construction document design phase. A project update meeting was held January 23. The project consists of a 45-classroom replacement elementary school. The academic staff and student population will relocate to the Billingsville facility while the new facility is under construction.





Project Information

Bond Program	2023 Bond
Facility Name	Billingsville Montessori Upfit (23)
Address	124 Skyland Avenue Charlotte, NC 28205
Architect	WHN
Construction Manager	Clancy & Theys in Partnership with The Daniele Company
Percent Complete	0%
Occupy On	August 2025

Scope of Work

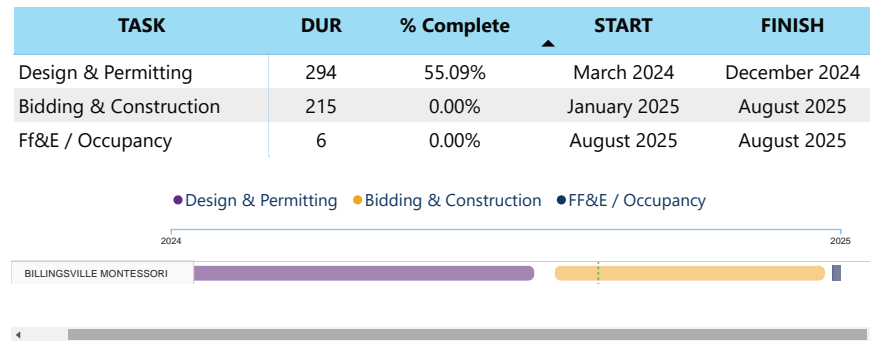
Repurpose Billingsville for relocated Montessori PK-6 program; demolish Chantilly.
Cotswold to occupy Billingsville August 2025;
Chantilly Montessori to occupy Billingsville 2027.



Project Status

The Billingsville Montessori Upfit project received its building permit approval for Phase 1. The construction document review with CMS leadership is planned in late February. The project consists of two phases; the first develops the security vestibule (summer 2025) and will bid in late February, the second phase is to renovate and incorporate the Montessori project features for the relocation of Chantilly Montessori School (summer of 2027).

Schedule





Financial Summary

Financial Summary

Budget

Contracts

Expenditures

MWSBE

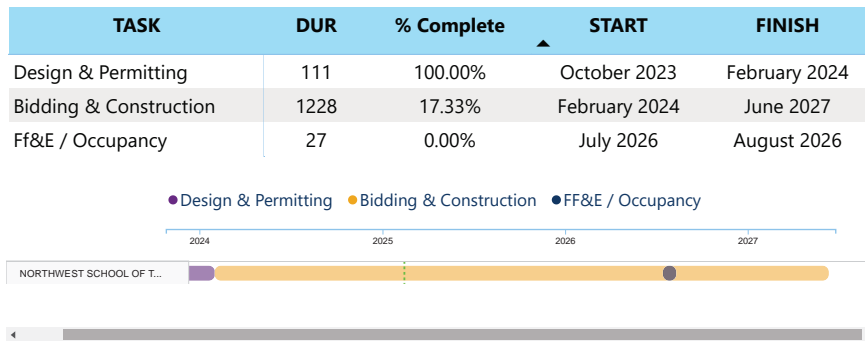
FACILITY ▲	BUDGET	TOTAL COMMITTED	TO BE COMMITTED	PAID TO DATE	MWSBE %
Cotswold ES/Billingsville	\$80,555,856	\$6,473,171	\$74,007,685	\$1,229,641	14.19%



Project Information

Bond Program	2023 Bond
Facility Name	Northwest School of the Arts (23)
Address	1415 Beatties Ford Road Charlotte, NC 28216
Architect	LS3P Associates
Construction Manager	Balfour Beatty
Percent Complete	29%
Occupancy On	August 2026

Schedule



Scope of Work

Final Phase of work includes a 9-12 conversion/expansion. the construction of a new building to include arts (sculpture, ceramics, print making, drawing/painting, photography), science, general classrooms, media, administration, and student services. In a

Project Status

The Northwest School of the Arts G Building construction is progressing well; structural steel is approaching completion, elevated floor slabs are complete and interior masonry walls continue. Mechanical, electrical and plumbing (MEP) contractors continue their wall and above ceiling rough in on the first and second floors. Preconstruction meetings with trades continue as they mobilize to the site. Occupancy of the new Building G is scheduled January 2026; renovations, demolition and site work will continue and scheduled for completion August 2027.





Project Information

Bond Program	2023 Bond
Facility Name	First Ward Creative Arts Academy (23)
Address	715 North Caldwell Street Charlotte, NC 28202
Architect	Boomerang Design
Construction Manager	Edifice
Percent Complete	0%
Occupancy On	August 2026

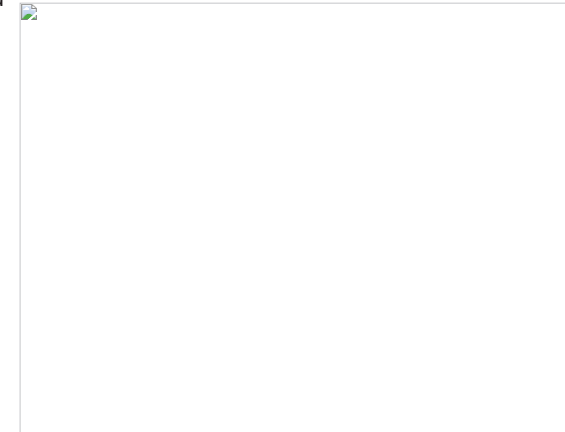
Scope of Work

Renovate First Ward as full magnet 6-8.



Project Status

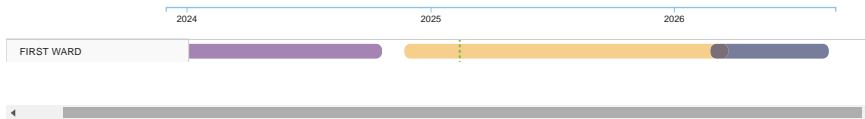
The First Ward Creative Arts project continues to progress in the bid phase. The construction manager has received bids and scheduled for Board of Education approval in late February. The project scope includes interior and building envelope renovations, security vestibule, middle school arts labs and upfit of classrooms to a primary school environment to accommodate secondary school students.



Schedule

TASK	DUR	% Complete	START	FINISH
Design & Permitting	334	82.09%	December 2023	October 2024
Bidding & Construction	486	0.00%	December 2024	April 2026
Ff&E / Occupancy	178	0.00%	March 2026	August 2026

● Design & Permitting ● Bidding & Construction ● FF&E / Occupancy





Financial Summary

Financial Summary

Budget

Contracts

Expenditures

MWSBE

FACILITY ▲	BUDGET	TOTAL COMMITTED	TO BE COMMITTED	PAID TO DATE	MWSBE %
Northwest School of the Arts/First Ward	\$93,654,147	\$55,264,332	\$37,909,510	\$6,944,251	11.19%



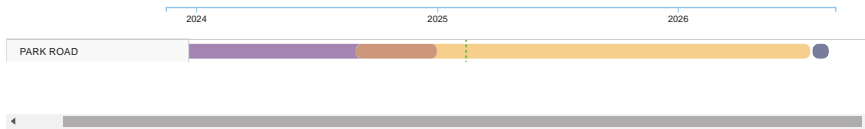
Project Information

Bond Program	2023 Bond
Facility Name	New Elementary School on Park Road (23)
Address	3701 Haven Drive Charlotte, NC 28209
Architect	Ratio
Construction Manager	Vannoy-McFarland, a JV
Percent Complete	3%
Occupy On	August 2026

Schedule

TASK	DUR	% Complete	START	FINISH
Design & Permitting	421	67.45%	November 2023	January 2025
Bidding & Construction	690	0.42%	September 2024	July 2026
Ff&E / Occupancy	25	0.00%	August 2026	August 2026

● Design & Permitting
 ● Bidding & Construction
 ● FF&E / Occupancy



Scope of Work

Replace with 45-classroom school for Dilworth paired schools.

Project Status

The New Elementary School on Park Road site preparations continue. Demolition of the old school is approximately 75% complete and the site work contractor has mobilized. The construction managers remaining scope packages bid in December and were approved by the Board of Education in late January. The project consists of a new 45-classroom elementary school.





Project Information

Bond Program	2023 Bond
Facility Name	Dilworth Latta (23)
Address	405 East Park Avenue Charlotte, NC 28203
Architect	
Construction Manager	
Percent Complete	0%
Occupy On	August 2027

Scope of Work

Repurpose Dilworth for a TBD middle school magnet.

Project Status

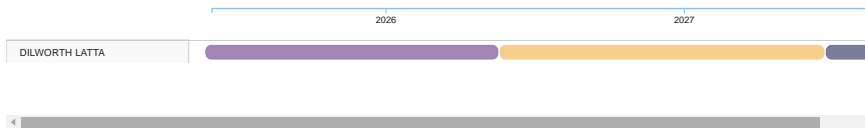
The Dilworth Latta project is scheduled to start design in the second quarter of 2025.



Schedule

TASK	DUR	% Complete	START	FINISH
Design & Permitting	359	0.00%	June 2025	May 2026
Bidding & Construction	398	0.00%	May 2026	June 2027
Ff&E / Occupancy	60	0.00%	July 2027	August 2027

● Design & Permitting ● Bidding & Construction ● FF&E / Occupancy





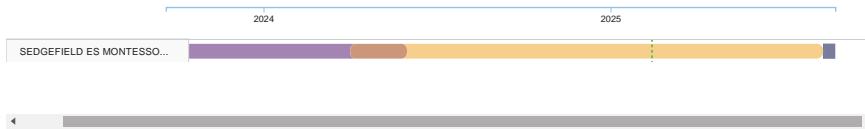
Project Information

Bond Program	2023 Bond
Facility Name	Sedgefield Montessori (23)
Address	715 Hartford Avenue Charlotte, NC 28209
Architect	WHN
Construction Manager	Vannoy-McFarland, a JV
Percent Complete	50%
Occupy On	August 2024

Schedule

TASK	DUR	% Complete	START	FINISH
Design & Permitting	261	100.00%	September 2023	June 2024
Bidding & Construction	499	31.32%	April 2024	August 2025
Ff&E / Occupancy	13	0.00%	August 2025	August 2025

● Design & Permitting
 ● Bidding & Construction
 ● FF&E / Occupancy



Scope of Work

Convert for Montessori PK-6 program.

Project Status

The Sedgefield Montessori project continues with the remaining Phase 1 site improvements continuing through the permitting process. The construction manager is proceeding with procurement and preparatory work for the Phase 2 renovations (life skills classrooms renovations, security vestibule and additional site work with amenities) so work can progress quickly once school is out for the summer.





Financial Summary

Financial Summary

Budget

Contracts

Expenditures

MWSBE

FACILITY ▲	BUDGET	TOTAL COMMITTED	TO BE COMMITTED	PAID TO DATE	MWSBE %
Park Road ES/Dilworth Latta/Sedgefield	\$89,491,971	\$59,054,982	\$30,436,989	\$5,475,533	19.50%

PROJECT STATUS

2023 BOND PROJECT STATUS

DESIGN



Billingsville Montessori Upfit
Cotswold Elementary School
First Ward Creative Arts Academy
Marie G. Davis Montessori Upfit
New Magnet Second Ward High School
North Mecklenburg High School Replacement
South Mecklenburg High School Replacement

CONSTRUCTION



New Middle School #1 South
Northwest School of the Arts
Sedgefield Montessori
New Elementary School on Park Road Site

NOT STARTED



Albemarle Road Middle School
Allenbrook Elementary School
Berryhill School
Beverly Woods Elementary School
Cochrane Collegiate Academy/iMeck
Cornelius Elementary School
Coulwood STEM Academy
Dilworth Latta
East Mecklenburg High School
Elbert Edwin Waddell High School
Garinger High School
Harding University High School

Huntersville Elementary School
J.T. Williams Secondary Montessori
Matthews Elementary School
New Middle School #2 North
South Charlotte Middle School
New Middle School #3 Southwest
Steele Creek Elementary School
University Park Creative Arts School
Villa Heights Elementary School
Wilson STEM Academy
West Regional Athletic Complex

PROJECT STATUS



PROCUREMENT

**UPCOMING MAJOR CONSTRUCTION
PROCUREMENT DATES**
Three-Month Look Ahead

Project

Bid Period*

Marie G. Davis

Managed by McMillan Pazdan Smith (Architect)

February 6, 2025

South Mecklenburg High School - Site Work and Demo

Managed by Whiting-Turner (CM)

February 21, 2025

South Mecklenburg - Structure, Skin and Finishes

Managed by Whiting-Turner (CM)

February 25, 2025

Billingsville Elementary School

Managed by Clancy & Theys (CM)

February 27, 2025

South Mecklenburg - MEP

Managed by Whiting-Turner (CM)

February 27, 2025

* NOTE: Work In Progress...Dates Subject to Change.

MWSBE

MWSBE

The Diversity & Inclusion Office of Charlotte-Mecklenburg Schools continued to conduct several individual virtual orientations with new MWSBE contractors and prime contractors. In addition, team members also attended/hosted the following outreach sessions/pre-bid meetings and/or workforce development opportunities:

Outreach/Pre-Bid/Workforce Development

- Charlotte Business Inclusion Advisory Council Retreat – Workforce Development Discussion
- Supplier Diversity Mid- Year Presentation
- McCrorey YMCA – MLK Holiday Celebration Breakfast
- First Ward – 2nd Site Visit
- Trillium Springs Pre-Bid Meeting

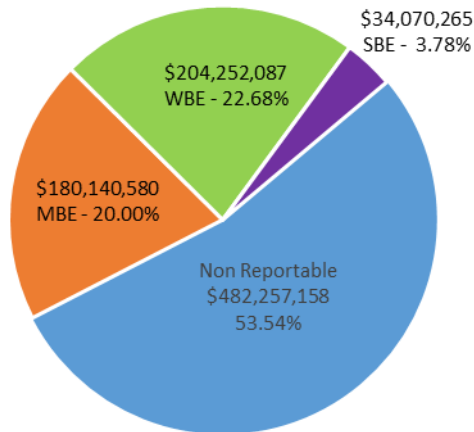
Upcoming Workforce Development

- CMS Workforce Development Quarterly Meeting – Wednesday, February 26th

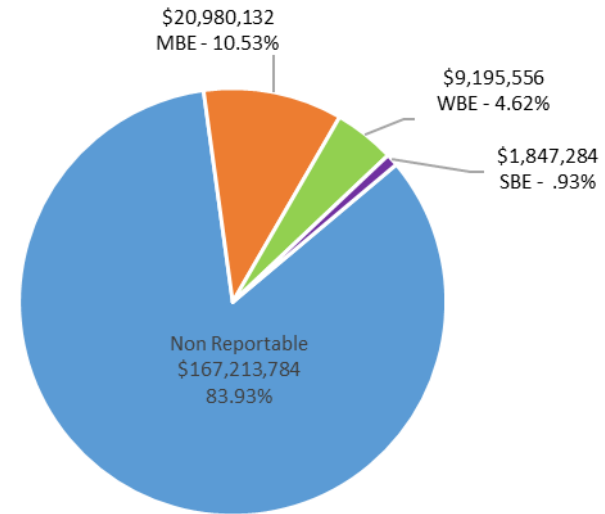
Over the next month, team members will continue to work with contractors interested in bidding on the upcoming school projects utilizing various virtual tools to communicate. Contractors are encouraged to review bid advertisements in the Charlotte Observer and register as a vendor on the North Carolina electronic Vendor Portal (eVP) for notification of the various opportunities.

MWSBE Participation

The MWSBE utilization related to design and construction of the **2017** bond projects is **46.46%** of which includes 20.00% (\$180,140,580) participation by minority contractors, 22.68% (\$204,252,087) by women contractors and 3.78% (\$34,070,265) participation by small business contractors. This accounts for more than \$418 million of utilization by Minority, Women and Small Business Contractors.



The MWSBE utilization related to design and construction of the **2023** bond projects is **16.07%** of which includes 10.53% (\$20,980,132) participation by minority contractors, 4.62% (\$9,195,556) by women contractors and .93% (\$1,847,284) participation by small business contractors. This accounts for more than \$24 million of utilization by Minority, Women and Small Business Contractors.



MWSBE Participation Commitments - Design and Construction

Charlotte-Mecklenburg Schools

2017 Bond

January 2025 Monthly Bond Report

Facility	Contract Amount	African American MBE\$	%	Other MBE \$	%	Total MBE \$	%	Other WBE \$	%	Other SBE \$	%	Total	%
<u>Ballantyne Ridge High School (17)</u>	\$134,436,938	\$3,194,162	2.38%	\$6,859,855	5.10%	\$10,054,018	7.48%	\$7,472,789	5.56%	\$7,069,934	5.26%	\$24,596,741	18.30%
<u>Briarwood Elementary School (17)</u>	\$28,327,548	\$4,038,457	14.26%	\$2,135,619	7.54%	\$6,174,076	21.80%	\$2,187,249	7.72%	\$187,102	0.66%	\$8,548,427	30.18%
<u>Bruns Avenue Elementary School (17)</u>	\$44,582,766	\$4,136,719	9.28%	\$3,817,551	8.56%	\$7,954,270	17.84%	\$4,973,444	11.16%	\$2,312,654	5.19%	\$15,240,368	34.18%
<u>Career and Technology Education (17)</u>	\$6,832,606	\$525,995	7.70%	\$332,511	4.87%	\$858,506	12.56%	\$221,655	3.24%	\$65,475	0.96%	\$1,145,636	16.77%
<u>Charlotte-Mecklenburg Academy (17)</u>	\$16,883,930	\$198,536	1.18%	\$1,031,692	6.11%	\$1,230,228	7.29%	\$928,655	5.50%	\$13,200	0.08%	\$2,172,083	12.86%
<u>Collinswood Language Academy (17)</u>	\$38,527,704	\$650,587	1.69%	\$1,613,104	4.19%	\$2,263,691	5.88%	\$11,363,565	29.49%	\$8,328	0.02%	\$13,635,584	35.39%
<u>E.E. Waddell (17)</u>	\$2,425,141	\$53,893	2.22%	\$0	0.00%	\$53,893	2.22%	\$69,124	2.85%	\$0	0.00%	\$123,017	5.07%
<u>East Mecklenburg High School (17)</u>	\$12,642,198	\$603,811	4.78%	\$532,460	4.21%	\$1,136,271	8.99%	\$490,364	3.88%	\$681,075	5.39%	\$2,307,710	18.25%
<u>Esperanza Global Academy (17)</u>	\$39,368,081	\$9,397,026	23.87%	\$3,700,782	9.40%	\$13,097,808	33.27%	\$24,736,196	62.83%	\$1,512,572	3.84%	\$39,346,575	99.95%
<u>Garinger High School (17)</u>	\$3,188,848	\$105,972	3.32%	\$363,897	11.41%	\$469,868	14.73%	\$498,134	15.62%	\$251,932	7.90%	\$1,219,935	38.26%
<u>Grove Park Elementary School (17)</u>	\$38,471,424	\$5,299,456	13.78%	\$3,772,013	9.80%	\$9,071,469	23.58%	\$2,580,361	6.71%	\$49,132	0.13%	\$11,700,962	30.41%
<u>Harding High School (17)</u>	\$13,015,986	\$1,504,505	11.56%	\$309,667	2.38%	\$1,814,172	13.94%	\$4,050,417	31.12%	\$36,861	0.28%	\$5,901,449	45.34%
<u>JT Williams (17)</u>	\$15,293,165	\$740,160	4.84%	\$379,844	2.48%	\$1,120,004	7.32%	\$3,832,205	25.06%	\$51,800	0.34%	\$5,004,009	32.72%
<u>Knights View Elementary School (17)</u>	\$45,420,860	\$5,880,253	12.95%	\$1,770,289	3.90%	\$7,650,542	16.84%	\$10,854,671	23.90%	\$2,563,223	5.64%	\$21,068,436	46.38%
<u>Lansdowne Elementary School (17)</u>	\$30,145,716	\$2,616,573	8.68%	\$877,274	2.91%	\$3,493,848	11.59%	\$2,274,067	7.54%	\$2,973,431	9.86%	\$8,741,346	29.00%
<u>Lincoln Heights Elementary School (17)</u>	\$2,782,011	\$418,018	15.03%	\$18,800	0.68%	\$436,818	15.70%	\$72,406	2.60%	\$73,077	2.63%	\$582,300	20.93%
<u>Mint Hill Elementary School (17)</u>	\$25,944,742	\$5,223,675	20.13%	\$17,791,909	68.58%	\$23,015,584	88.71%	\$1,192,408	4.60%	\$308,370	1.19%	\$24,516,362	94.49%
<u>Montclair Elementary School (17)</u>	\$26,093,784	\$3,593,852	13.77%	\$2,341,048	8.97%	\$5,934,900	22.74%	\$5,775,745	22.13%	\$493,707	1.89%	\$12,204,352	46.77%
<u>Mountain Island Lake Academy (17)</u>	\$11,707,778	\$152,250	1.30%	\$744,266	6.36%	\$896,517	7.66%	\$927,916	7.93%	\$15,300	0.13%	\$1,839,733	15.71%
<u>North Academy of World Languages (17)</u>	\$38,354,285	\$1,770,068	4.62%	\$1,575,864	4.11%	\$3,345,931	8.72%	\$4,231,632	11.03%	\$436,793	1.14%	\$8,014,357	20.90%
<u>Northwest School of the Arts (17)</u>	\$9,204,385	\$1,287,042	13.98%	\$309,525	3.36%	\$1,596,567	17.35%	\$2,684,844	29.17%	\$0	0.00%	\$4,281,411	46.51%
<u>Palisades High School (17)</u>	\$97,240,272	\$13,482,757	13.87%	\$7,641,104	7.86%	\$21,123,862	21.72%	\$8,317,153	8.55%	\$7,698,589	7.92%	\$37,139,603	38.19%
<u>Shamrock Gardens Elementary School (17)</u>	\$27,133,018	\$2,478,054	9.13%	\$1,636,383	6.03%	\$4,114,438	15.16%	\$21,128,435	77.87%	\$259,554	0.96%	\$25,502,427	93.99%
<u>Sharon Elementary School (17)</u>	\$8,534,491	\$438,383	5.14%	\$283,497	3.32%	\$721,880	8.46%	\$926,873	10.86%	\$106,444	1.25%	\$1,755,197	20.57%

Facility	Contract Amount	African American MBE\$	%	Other MBE \$	%	Total MBE \$	%	Other WBE \$	%	Other SBE \$	%	Total	%
<u>South Academy of International Langu</u>	\$37,153,679	\$6,023,142	16.21%	\$2,431,071	6.54%	\$8,454,213	22.75%	\$10,945,346	29.46%	\$313,999	0.85%	\$19,713,558	53.06%
<u>South Mecklenburg High School (17)</u>	\$15,602,267	\$2,266,944	14.53%	\$1,280,145	8.20%	\$3,547,089	22.73%	\$260,666	1.67%	\$82,420	0.53%	\$3,890,175	24.93%
<u>South Pine Academy (17)</u>	\$26,196,854	\$916,165	3.50%	\$19,052,520	72.73%	\$19,968,685	76.23%	\$4,342,256	16.58%	\$237,754	0.91%	\$24,548,695	93.71%
<u>West Charlotte High School (17)</u>	\$95,399,047	\$14,488,288	15.19%	\$5,259,935	5.51%	\$19,748,223	20.70%	\$65,658,505	68.83%	\$5,213,393	5.46%	\$90,620,120	94.99%
<u>West Mecklenburg High School (17)</u>	\$9,810,566	\$283,809	2.89%	\$509,403	5.19%	\$793,212	8.09%	\$1,255,006	12.79%	\$1,054,146	10.75%	\$3,102,365	31.62%
Grandtotal	\$900,720,090	\$91,768,550	10.19%	\$88,372,030	9.81%	\$180,140,580	20.00%	\$204,252,087	22.68%	\$34,070,265	3.78%	\$418,462,932	46.46%

MWSBE Participation Commitments - Design and Construction

Charlotte-Mecklenburg Schools

2023 Bond

January 2025 Monthly Bond Report

Facility	Contract Amount	African American MBE\$	%	Other MBE \$	%	Total MBE \$	%	Other WBE \$	%	Other SBE \$	%	Total	%
<u>Cotswold ES/Billingsville (23)</u>	\$3,504,989	\$174,700	4.98%	\$83,072	2.37%	\$257,772	7.35%	\$106,630	3.04%	\$132,850	3.79%	\$497,252	14.19%
<u>Marie G Davis Montessori Upfit (23)</u>	\$773,067	\$0	0.00%	\$34,501	4.46%	\$34,501	4.46%	\$111,445	14.42%	\$74,843	9.68%	\$220,789	28.56%
<u>New Middle School 1 South (23)</u>	\$64,973,978	\$2,769,102	4.26%	\$6,230,247	9.59%	\$8,999,349	13.85%	\$3,355,334	5.16%	\$189,750	0.29%	\$12,544,433	19.31%
<u>New Second Ward High School (23)</u>	\$7,780,048	\$0	0.00%	\$113,940	1.46%	\$113,940	1.46%	\$204,613	2.63%	\$650,000	8.35%	\$968,553	12.45%
<u>North Mecklenburg High School Repla</u>	\$9,583,619	\$0	0.00%	\$575,100	6.00%	\$575,100	6.00%	\$52,891	0.55%	\$145,450	1.52%	\$773,441	8.07%
<u>Northwest School of the Arts/First Wa</u>	\$51,267,946	\$1,171,234	2.28%	\$1,513,165	2.95%	\$2,684,399	5.24%	\$2,971,759	5.80%	\$83,077	0.16%	\$5,739,235	11.19%
<u>Park Road/Dilworth Latta/Sedgefield (</u>	\$54,523,204	\$6,692,315	12.27%	\$1,458,508	2.68%	\$8,150,823	14.95%	\$1,948,448	3.57%	\$533,314	0.98%	\$10,632,586	19.50%
<u>South Mecklenburg High School Repla</u>	\$6,829,907	\$42,050	0.62%	\$122,200	1.79%	\$164,250	2.40%	\$444,435	6.51%	\$38,000	0.56%	\$646,685	9.47%
Grandtotal	\$199,236,757	\$10,849,401	5.45%	\$10,130,732	5.08%	\$20,980,132	10.53%	\$9,195,556	4.62%	\$1,847,284	0.93%	\$32,022,973	16.07%

FINANCIALS

FINANCIALS

Funding Source and Value		Amount Committed/Pending	Amount Paid to Date	Amount Expended This Period
2017 Bond	\$1,005,473,960	\$990,028,420	\$966,108,528	\$2,423,805
2023 Bond	\$2,500,000,000	\$246,947,229	\$35,041,398	\$6,804,009
Grand Total	\$3,505,473,960	\$1,236,975,649	\$1,001,149,926	\$9,227,814

**CHARLOTTE-MECKLENBURG BOARD OF EDUCATION
2017 BOND SERIES-CAPITAL IMPROVEMENT PROGRAMS
BUDGET STATUS REPORT**

	Original Project Budget	Current Project Budget	Committed Amount	Approved Change Orders	Total Committed	Pending Commitments	To Be Committed	Prev Paid To Date	Paid To Date	Balance To Complete	Monthly Expenditure
	(A)	(B)	(C)	(D)	(E)=C+D	(F)	(G)=(B-E-F)	(H)	(I)	(J)=(B-I)	(K)=(I-H)
<u>A. REPLACEMENT & RENOVATIONS</u>											
1 Briarwood Elementary *	\$29,091,619	\$31,136,111	\$4,730,737	\$26,405,374	\$31,136,111	\$0	\$0	\$31,136,111	\$31,136,111	\$0	\$0
2 Bruns Academy Replacement	\$34,207,808	\$48,859,580	\$3,950,806	\$42,432,677	\$46,383,483	\$423,882	\$2,079,945	\$39,380,078	\$40,741,263	\$8,118,317	\$1,361,185
3 Career & Technology Education Upgrades	\$10,101,734	\$6,984,007	\$3,665,419	\$3,318,588	\$6,984,007	\$0	\$0	\$6,984,007	\$6,984,007	\$0	\$0
4 Collinswood K-8 *	\$44,172,540	\$41,401,384	\$4,916,632	\$36,484,752	\$41,401,384	\$0	\$0	\$41,401,384	\$41,401,384	\$0	\$0
5 East Mecklenburg HS	\$12,771,594	\$10,141,268	(\$1,659,510)	\$11,800,778	\$10,141,268	\$0	\$0	\$10,141,268	\$10,141,268	\$0	\$0
6 Garinger HS	\$13,936,979	\$4,204,948	\$765,642	\$3,259,238	\$4,024,880	\$0	\$180,068	\$3,946,199	\$3,993,744	\$211,204	\$47,545
7 Harding University High *	\$18,330,263	\$13,747,878	\$2,045,267	\$11,702,610	\$13,747,877	\$0	\$0	\$13,747,877	\$13,747,877	\$0	\$0
8 Charlotte-Mecklenburg Academy (FKA -EC Specialty	\$18,957,960	\$17,699,220	\$2,175,504	\$15,523,717	\$17,699,220	\$0	\$0	\$17,699,220	\$17,699,220	\$0	\$0
9 Lansdowne Elementary	\$29,391,270	\$33,554,188	\$3,926,495	\$28,883,870	\$32,810,365	\$0	\$743,823	\$32,674,813	\$32,674,813	\$879,375	\$0
10 Lincoln Heights Elementary	\$3,740,478	\$4,333,830	\$2,878,553	\$738,264	\$3,616,817	\$0	\$717,013	\$3,387,908	\$3,392,634	\$941,196	\$4,726
11 Montclair Elementary Replacement *	\$28,559,390	\$28,200,634	\$2,426,761	\$25,773,873	\$28,200,634	\$0	\$0	\$28,200,634	\$28,200,634	\$0	\$0
12 Mountain Island k-8	\$9,218,439	\$13,239,686	\$1,658,948	\$10,892,252	\$12,551,200	\$0	\$688,486	\$12,485,881	\$12,485,881	\$753,805	\$0
13 Northwest School of the Arts	\$17,632,202	\$11,417,000	\$5,347,780	\$4,782,343	\$10,130,123	\$0	\$1,289,392	\$8,756,060	\$8,758,324	\$2,658,676	\$2,265
14 Shamrock Gardens Elementary *	\$29,890,351	\$29,757,027	\$3,422,159	\$26,334,868	\$29,757,027	\$0	\$0	\$29,757,027	\$29,757,027	\$0	\$0
15 Sharon Elementary	\$7,706,528	\$9,088,894	\$1,430,033	\$7,658,861	\$9,088,894	\$0	\$0	\$9,088,894	\$9,088,894	\$0	\$0
16 South Mecklenburg HS	\$13,352,143	\$17,322,927	\$1,961,354	\$14,687,584	\$16,648,938	\$37,407	\$636,582	\$14,829,943	\$15,142,587	\$2,180,340	\$312,644
17 E.E. Waddell Magnet HS	\$4,571,709	\$3,770,925	\$3,217,375	\$123,480	\$3,340,855	\$0	\$430,070	\$3,065,863	\$3,065,833	\$705,092	(\$31)
18 West Charlotte HS Replacement	\$109,977,166	\$103,466,299	\$11,724,077	\$91,681,984	\$103,406,061	\$8,250	\$51,987	\$102,959,668	\$102,959,668	\$506,632	\$0
19 West Mecklenburg HS	\$11,065,440	\$6,260,654	(\$2,370,464)	\$8,631,118	\$6,260,654	\$0	\$0	\$6,260,654	\$6,260,654	\$0	\$0
20 John Taylor Williams	\$13,964,339	\$16,058,504	\$3,565,962	\$12,267,108	\$15,833,069	\$0	\$225,435	\$15,831,744	\$15,831,744	\$226,760	\$0
Total Replacement & Renovations	\$460,639,952	\$450,644,964	\$59,779,531	\$383,383,338	\$443,162,869	\$469,538	\$7,042,800	\$431,735,233	\$433,463,568	\$17,181,397	\$1,728,335
<u>B. RESPONSE TO ENROLLMENT GROWTH</u>											
1 South Academy of International Languages	\$45,359,367	\$40,603,148	\$5,969,503	\$34,633,646	\$40,603,148	\$0	\$0	\$40,603,147	\$40,603,147	\$0	\$0
2 North Academy of World Languages (FKA - New K-8	\$45,359,367	\$41,742,062	\$6,024,166	\$35,717,896	\$41,742,062	\$0	\$0	\$41,742,062	\$41,742,062	\$0	\$0
3 South Pine Academy (FKA - New ES Nations Ford, S	\$29,173,829	\$30,477,421	\$6,883,836	\$23,593,585	\$30,477,421	\$0	\$0	\$30,477,421	\$30,477,421	\$0	\$0
4 Mint Hill Elementary School	\$29,988,332	\$29,026,764	\$3,295,174	\$25,730,325	\$29,025,499	\$0	\$1,265	\$29,026,764	\$29,025,499	\$1,265	(\$1,265)
5 Esperanza Global Academy (FKA New ES - Windsor	\$30,422,230	\$45,297,022	\$13,339,136	\$31,505,754	\$44,844,890	\$1,200	\$450,931	\$44,188,749	\$44,197,194	\$1,099,828	\$8,445
6 Knights View Elementary School - Elon/Hawk Ridge	\$30,426,712	\$59,997,684	\$9,548,051	\$43,650,774	\$53,198,825	\$6,500	\$6,792,358	\$51,113,813	\$51,135,470	\$8,862,213	\$21,657
7 Grove Park Elementary (FKA New ES - Hidden Valle	\$30,518,345	\$42,890,747	\$6,317,525	\$36,115,060	\$42,432,585	\$2,000	\$456,162	\$42,410,363	\$42,412,118	\$478,630	\$1,755
8 Palisades High School	\$109,908,793	\$106,172,644	\$10,855,109	\$95,084,185	\$105,939,294	(\$1)	\$233,351	\$105,889,191	\$105,887,934	\$284,710	(\$1,257)
9 Ballantyne Ridge High School	\$110,287,621	\$158,621,503	\$26,055,936	\$131,737,485	\$157,793,421	\$329,168	\$495,999	\$146,497,979	\$147,164,116	\$11,457,387	\$666,137
Total Response to Enrollment Growth	\$461,444,596	\$554,828,995	\$88,288,436	\$457,768,709	\$546,057,145	\$338,867	\$8,430,068	\$531,949,490	\$532,644,961	\$22,184,035	\$695,471
<u>C. CONTINGENCY</u>											
	\$0	\$0	\$0	\$0	\$0	\$0	\$0	\$0	\$0	\$0	\$0
Total Contingency	\$0	\$0	\$0	\$0	\$0	\$0	\$0	\$0	\$0	\$0	\$0

**CHARLOTTE-MECKLENBURG BOARD OF EDUCATION
2017 BOND SERIES-CAPITAL IMPROVEMENT PROGRAMS
BUDGET STATUS REPORT**

	Original Project Budget	Current Project Budget	Committed Amount	Approved Change Orders	Total Committed	Pending Commitments	To Be Committed	Prev Paid To Date	Paid To Date	Balance To Complete	Monthly Expenditure
	(A)	(B)	(C)	(D)	(E)=C+D	(F)	(G)=(B-E-F)	(H)	(I)	(J)=(B-I)	(K)=(I-H)
TOTAL LOCAL BOND PROGRAM	\$922,084,548	\$1,005,473,960	\$148,067,966	\$841,152,047	\$989,220,014	\$808,406	\$15,472,869	\$963,684,723	\$966,108,528	\$39,365,431	\$2,423,805

Original project estimated costs approved by the Board Of Education on July 25, 2017 approved by the voters of Mecklenburg County on November 7, 2017.

*Project included in \$33.2M early funding approved by Board Of Education on August 9, 2016 and Mecklenburg Board of County Commissioners on September 6, 2016. On February 19, 2019 an additional \$8M was approved for New Elementary School - Elon/Hawk Ridge Relief site.

*Current Budget includes an additional \$89.2M to fund increase land and construction costs. The additional funds were approved by the Board of County Commissioners on June 16, 2020.

The New Elementary School - Elon/Hawk Ridge Relief current Budget includes 6.8M for Park and Recreation Project.

Bruns Academy Replacement current budget includes \$1.5M for Park and Recreation Project.

Current Program Budget reflects a reclass of \$7.4M in expenditures to 2007 Bond Program and \$14.4M in expenditures to 2013 Bond Program.

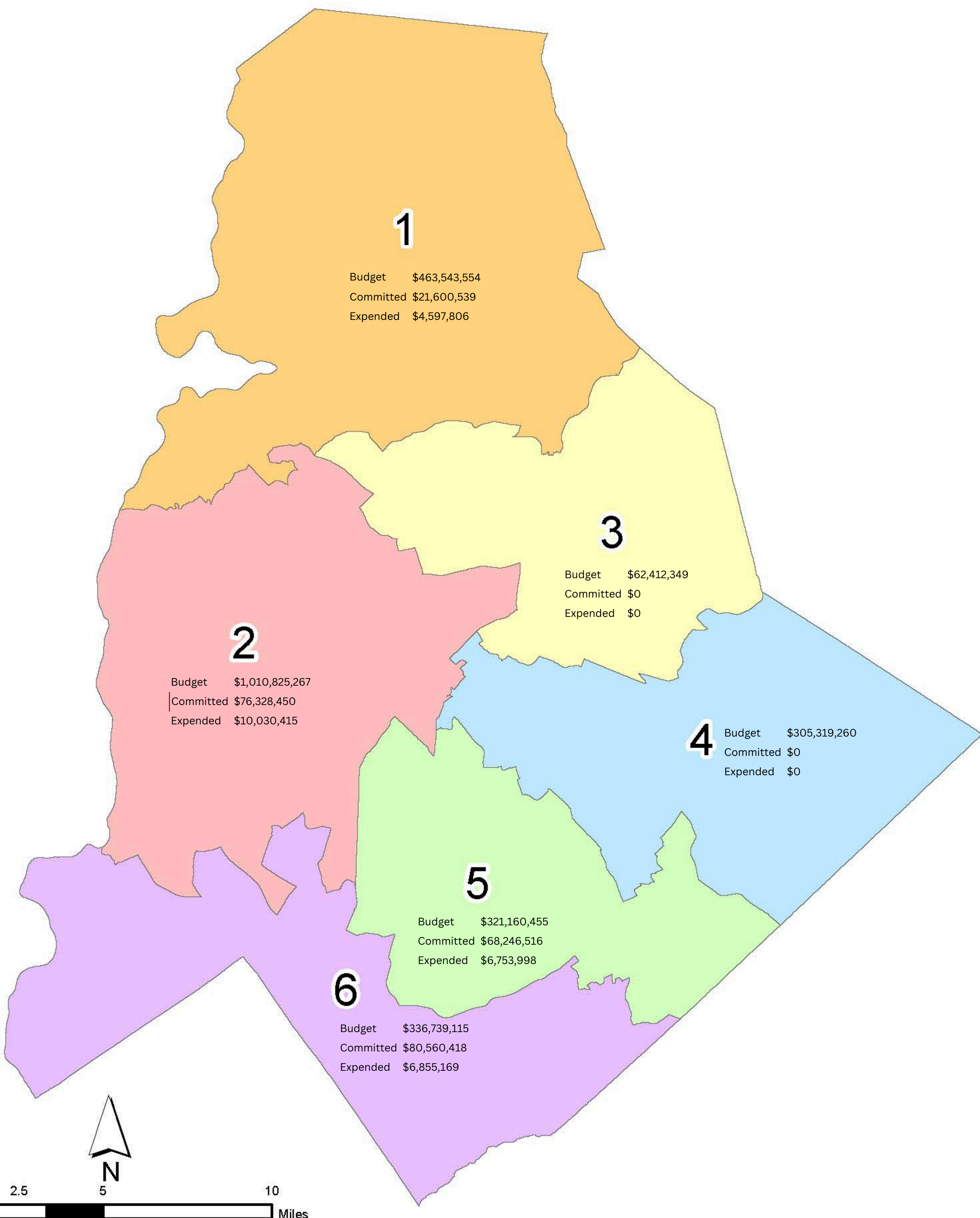
**CHARLOTTE-MECKLENBURG BOARD OF EDUCATION
2023 BOND SERIES-CAPITAL IMPROVEMENT PROGRAMS
BUDGET STATUS REPORT**

	Original Project Budget	Current Project Budget	Committed Amount	Approved Change Orders	Total Committed	Pending Commitments	To Be Committed	Prev Paid To Date	Paid To Date	Balance To Complete	Monthly Expenditure
	(A)	(B)	(C)	(D)	(E)=C+D	(F)	(G)=(B-E-F)	(H)	(I)	(J)=(B-I)	(K)=(I-H)
<u>A. REPLACEMENT & RENOVATIONS</u>											
1 Albemarle Road Middle School	\$97,732,036	\$97,732,036	\$0	\$0	\$0	\$0	\$97,732,036	\$0	\$0	\$97,732,036	\$0
2 Allenbrook Elementary School	\$74,244,220	\$74,244,220	\$0	\$0	\$0	\$0	\$74,244,220	\$0	\$0	\$74,244,220	\$0
3 Berryhill School	\$104,286,451	\$104,286,451	\$3,921,765	\$0	\$3,921,765	\$0	\$100,364,686	\$0	\$0	\$104,286,451	\$0
4 Beverly Woods Elementary School	\$71,237,699	\$71,237,699	\$2,718,364	\$0	\$2,718,364	\$0	\$68,519,335	\$48,824	\$49,240	\$71,188,459	\$415
5 Cochrane Collegiate Academy/iMeck	\$7,506,657	\$7,506,657	\$0	\$0	\$0	\$0	\$7,506,657	\$0	\$0	\$7,506,657	\$0
6 Cornelius Elementary School	\$76,471,997	\$76,471,997	\$0	\$0	\$0	\$0	\$76,471,997	\$0	\$0	\$76,471,997	\$0
7 Cotswold ES/Billingsville	\$80,555,856	\$80,555,856	\$6,851,938	(\$378,767)	\$6,473,171	\$0	\$74,007,685	\$1,229,641	\$1,493,159	\$79,062,697	\$263,517
8 Coulwood STEM Academy	\$92,706,982	\$92,706,982	\$0	\$0	\$0	\$0	\$92,706,982	\$0	\$0	\$92,706,982	\$0
9 E.E. Waddell High School	\$1,563,348	\$1,563,348	\$0	\$0	\$0	\$0	\$1,563,348	\$0	\$0	\$1,563,348	\$0
10 East Mecklenburg High School	\$201,339,353	\$201,339,353	\$0	\$0	\$0	\$0	\$201,339,353	\$0	\$0	\$201,339,353	\$0
11 Garinger High School	\$54,905,692	\$54,905,692	\$0	\$0	\$0	\$0	\$54,905,692	\$0	\$0	\$54,905,692	\$0
12 Harding University High School	\$202,879,499	\$202,879,499	\$0	\$0	\$0	\$0	\$202,879,499	\$0	\$0	\$202,879,499	\$0
13 Huntersville Elementary School	\$66,235,904	\$66,235,904	\$144,376	\$0	\$144,376	\$0	\$66,091,528	\$4,940	\$44,080	\$66,191,824	\$39,140
14 J.T. Williams	\$1,647,752	\$1,647,752	\$0	\$0	\$0	\$0	\$1,647,752	\$0	\$0	\$1,647,752	\$0
15 Marie G Davis Montessori Upfit	\$9,174,783	\$9,174,783	\$1,119,089	\$4,126	\$1,123,215	\$0	\$8,051,568	\$394,277	\$406,383	\$8,768,400	\$12,106
16 Matthews Elementary School	\$79,874,929	\$79,874,929	\$0	\$0	\$0	\$0	\$79,874,929	\$0	\$0	\$79,874,929	\$0
17 North Mecklenburg High School Replacement	\$228,464,171	\$228,464,171	\$19,104,988	(\$1,142,360)	\$17,962,628	\$0	\$210,501,543	\$4,534,916	\$4,685,881	\$223,778,290	\$150,965
18 Northwest School of the Arts/First Ward	\$93,654,147	\$93,654,147	\$6,005,626	\$49,258,706	\$55,264,332	\$45,244	\$37,864,266	\$6,944,251	\$9,910,863	\$83,743,284	\$2,966,612
19 Park Road ES/Dilworth Latta/Sedgefield	\$89,491,971	\$89,491,971	\$11,153,612	\$47,901,370	\$59,054,982	\$8,000	\$30,428,989	\$5,475,533	\$6,681,152	\$82,810,819	\$1,205,619
20 South Charlotte Middle School	\$7,741,099	\$7,741,099	\$0	\$0	\$0	\$0	\$7,741,099	\$0	\$0	\$7,741,099	\$0
21 South Mecklenburg High School Replacement	\$127,909,253	\$127,909,253	\$11,951,246	(\$443,228)	\$11,508,018	\$12,500	\$116,388,735	\$4,001,142	\$4,145,550	\$123,763,703	\$144,408
22 Steele Creek Elementary School	\$80,830,528	\$80,830,528	\$0	\$0	\$0	\$0	\$80,830,528	\$0	\$0	\$80,830,528	\$0
23 University Park Arts	\$73,119,088	\$73,119,088	\$0	\$0	\$0	\$0	\$73,119,088	\$0	\$0	\$73,119,088	\$0
24 Villa Heights @ Hawthorne	\$6,247,871	\$6,247,871	\$0	\$0	\$0	\$0	\$6,247,871	\$0	\$0	\$6,247,871	\$0
25 West Regional Athletic Complex	\$8,999,792	\$8,999,792	\$0	\$0	\$0	\$0	\$8,999,792	\$0	\$0	\$8,999,792	\$0
26 Wilson STEM Academy	\$92,471,565	\$92,471,565	\$0	\$0	\$0	\$0	\$92,471,565	\$0	\$0	\$92,471,565	\$0
Total Replacement & Renovations	\$2,031,292,643	\$2,031,292,643	\$62,971,004	\$95,199,847	\$158,170,851	\$65,744	\$1,872,500,743	\$22,633,525	\$27,416,308	\$2,003,876,335	\$4,782,783
<u>B. RESPONSE TO ENROLLMENT GROWTH</u>											
1 New Middle School #2 North	\$92,371,482	\$92,371,482	\$3,493,536	\$0	\$3,493,536	\$0	\$88,877,946	\$57,949	\$61,837	\$92,309,645	\$3,887
2 New Middle School #3 Southwest	\$98,436,153	\$98,436,153	\$0	\$0	\$0	\$0	\$98,436,153	\$0	\$0	\$98,436,153	\$0
3 New Second Ward High School	\$176,810,460	\$176,810,460	\$15,882,361	\$136,777	\$16,019,138	\$0	\$160,791,322	\$2,691,887	\$3,467,090	\$173,343,370	\$775,203
4 New Middle School #1 South	\$101,089,262	\$101,089,262	\$8,407,068	\$60,645,332	\$69,052,400	\$145,560	\$31,891,302	\$2,854,027	\$4,096,163	\$96,993,099	\$1,242,136
Total Response to Enrollment Growth	\$468,707,357	\$468,707,357	\$27,782,965	\$60,782,109	\$88,565,074	\$145,560	\$379,996,723	\$5,603,864	\$7,625,090	\$461,082,267	\$2,021,226
	\$2,500,000,000	\$2,500,000,000	\$90,753,969	\$155,981,955	\$246,735,924	\$211,304	\$2,252,497,467	\$28,237,388	\$35,041,398	\$2,464,958,602	\$6,804,009

Original Budget Projects were approved by the Board of County Commissioners on June 6, 2023 and by the voters of Mecklenburg County on November 7, 2023.

2023 BOND BY BOARD DISTRICT

2024-25 CHARLOTTE-MECKLENBURG SCHOOLS BOARD DISTRICT - 2023 BOND



This map was prepared by Capital Planning & Real Estate, January 2025.

WEBSITE / SOCIAL MEDIA

BOND WEBSITE/SOCIAL MEDIA

Bond Construction Website

www.cmsbondconstruction.com

Linktree

<https://linktr.ee/cmsbondinfo>

Facebook

<https://www.facebook.com/cmsbond>

Twitter

<https://twitter.com/CMSbondinfo>

YouTube

<https://www.youtube.com/@cmsbondinfo>

Instagram

<https://www.instagram.com/cmsbondinfo>

For more information, email cmsbond@cms.k12.nc.us