

BUILDING FOR EXCELLENCE



October 2024

Bond Report



Northwest School of the Arts

CONSTRUCTION
Capital Improvement Program

OCTOBER 2024
BOND REPORT

ACTIVE PROJECT SUMMARY SHEETS

PROCUREMENT

MWSBE

- 2017 MWSBE Participation Commitments
- 2023 MWSBE Participation Commitments

FINANCIALS

- Bond Progress Summary
- Budget Status Reports
 - 2017 Bond Series
 - 2023 Bond Series

PROJECT SUMMARY SHEETS



Project Information

Bond Program	2017 Bond
Facility Name	Ballantyne Ridge High School (17)
Address	4004 Toringdon Way Charlotte, NC 28277
Architect	Ratio
Construction Manager	Messer
Percent Complete	99%
Occupy On	August 2024

Scope of Work

New 100-classroom high school to relieve South Mecklenburg, Ardrey Kell and Myers Park HS.

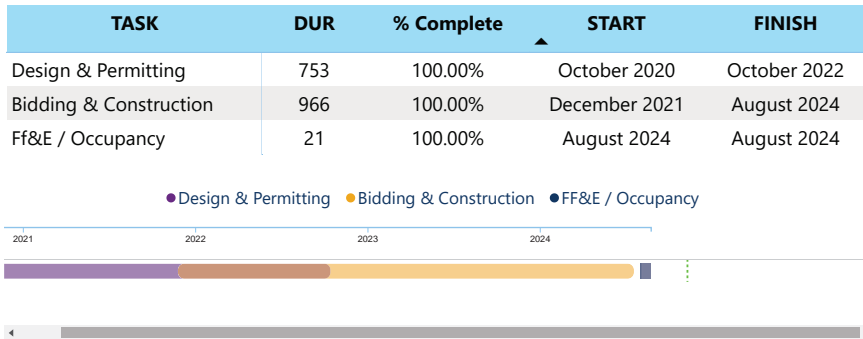


Project Status

The Ballantyne Ridge High School project team continues to work through miscellaneous site activities, finalize punch list, commissioning activities, financial reconciliation and closeout documents.



Schedule



Financial Summary

Financial Summary

Budget

Contracts

Expenditures

MWSBE

FACILITY	BUDGET	TOTAL COMMITTED	TO BE COMMITTED	PAID TO DATE	MWSBE %
Ballantyne Ridge High School	\$158,621,503	\$146,138,264	\$12,473,359	\$130,947,823	17.81%



Project Information

Bond Program	2017 Bond
Facility Name	South Mecklenburg High School (17)
Address	8900 Park Road Charlotte, NC 28210
Architect	Morris Berg
Construction Manager	Balfour Beatty
Percent Complete	90%
Occupancy On	January 2025

Scope of Work

Replace classroom building built in 1958 to upgrade learning conditions.

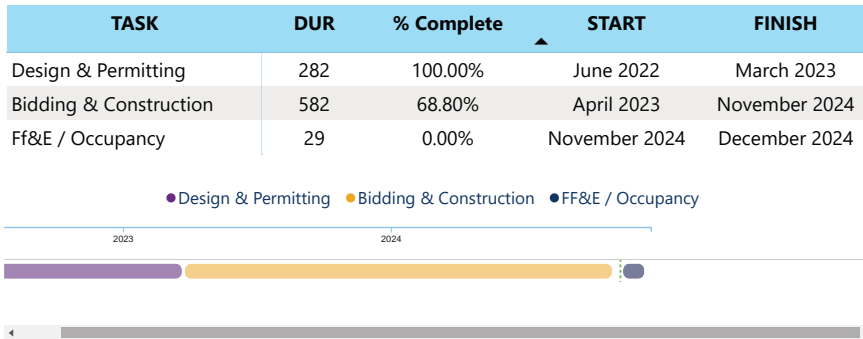


Project Status

The South Mecklenburg High School (17) project "Building X" is nearing completion with final testing, inspections, and punch work ongoing. The team is preparing to install furniture and technology components.



Schedule



Financial Summary

Financial Summary

Budget

Contracts

Expenditures

MWSBE

FACILITY	BUDGET	TOTAL COMMITTED	TO BE COMMITTED	PAID TO DATE	MWSBE %
South Mecklenburg HS	\$17,322,927	\$16,601,101	\$721,826	\$12,265,796	25.26%



Project Information

Bond Program	2017 Bond
Facility Name	Knights View Elementary School (17)
Address	11000 Beau Riley Road Charlotte, NC 28277
Architect	Little Diversified Architects
Construction Manager	Balfour Beatty
Percent Complete	99%
Occupy On	August 2024

Scope of Work

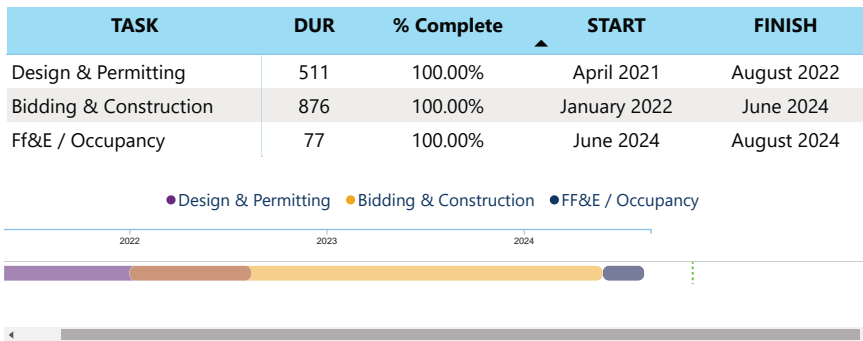
New 45-classroom elementary school to relieve Elon, Hawk Ridge, Polo.



Project Status

The Knights View Elementary School team continues to finalize financial and closeout documents.

Schedule



Financial Summary

Financial Summary

Budget

Contracts

Expenditures

MWSBE

FACILITY	BUDGET	TOTAL COMMITTED	TO BE COMMITTED	PAID TO DATE	MWSBE %
Knights View Elementary School - Elon/Hawk Ridge Relief	\$59,997,683	\$53,198,226	\$6,799,457	\$49,257,001	46.38%



Project Information

Bond Program	2017 Bond
Facility Name	Bruns Avenue Elementary School (17)
Address	501 South Bruns Avenue Charlotte, NC 28208
Architect	ADW
Construction Manager	Edifice
Percent Complete	96%
Occupy On	August 2024

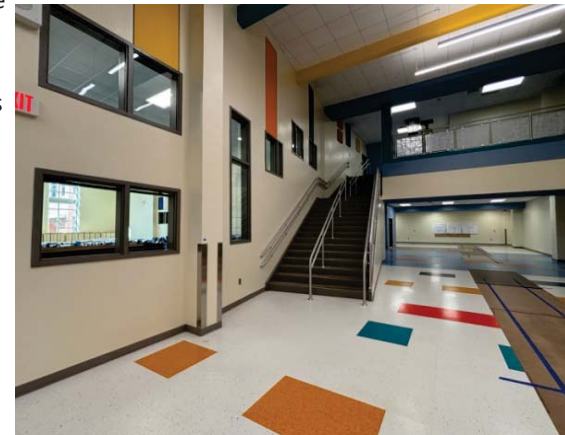
Scope of Work

New 45-classroom elementary school (K-5); replaces old school built in 1969.

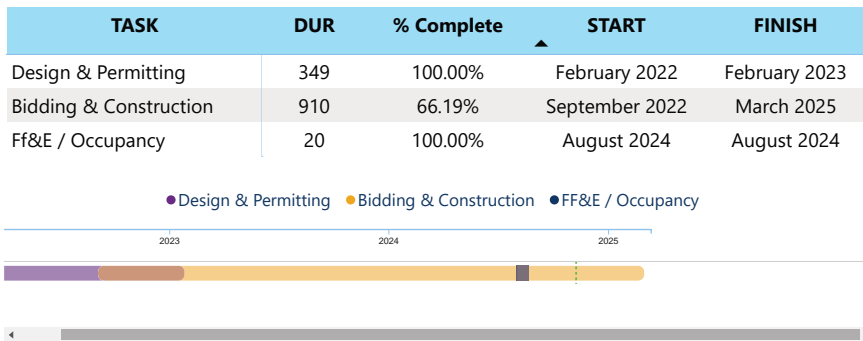


Project Status

The Bruns Avenue Elementary School Replacement project team has completed the salvage operations related to the old Bruns building and has started the demolition and site work phase. The project team remains in constant communication with the Principal to ensure demolition and grading activities do not affect the school. The Phase 2 work will continue through spring of 2025.



Schedule



Financial Summary

Financial Summary

Budget

Contracts

Expenditures

MWSBE

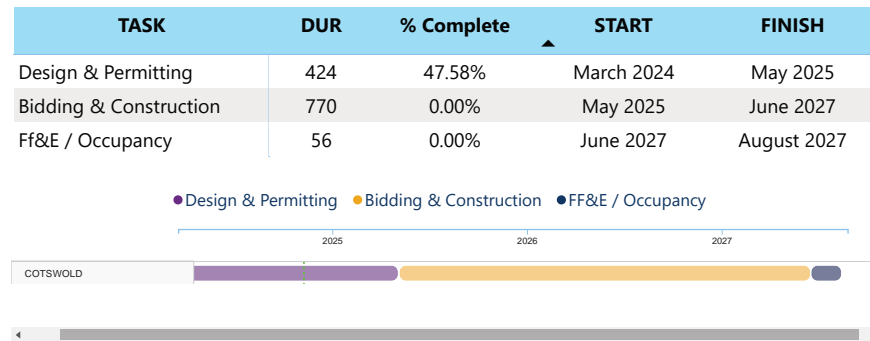
FACILITY	BUDGET	TOTAL COMMITTED	TO BE COMMITTED	PAID TO DATE	MWSBE %
Bruns Academy Replacement	\$48,859,580	\$46,388,169	\$2,468,331	\$36,662,288	33.33%



Project Information

Bond Program	2023 Bond
Facility Name	Cotswold Elementary School (23)
Address	300 Greenwich Road Charlotte, NC 28211
Architect	Little Diversified
Construction Manager	Clancy & Theys in Partnership with The Daniele Company
Percent Complete	0%
Occupy On	August 2027

Schedule



Scope of Work

Onsite replacement, collapsing paired school into Billingsville for project duration.

Project Status

Cotswold Elementary Replacement School project continues to progress in the schematic design phase. The project consists of a replacement elementary school.





Project Information

Bond Program	2023 Bond
Facility Name	Billingsville Montessori Upfit (23)
Address	124 Skyland Avenue Charlotte, NC 28205
Architect	WHN
Construction Manager	Clancy & Theys in Partnership with The Daniele Company
Percent Complete	0%
Occupy On	August 2025

Scope of Work

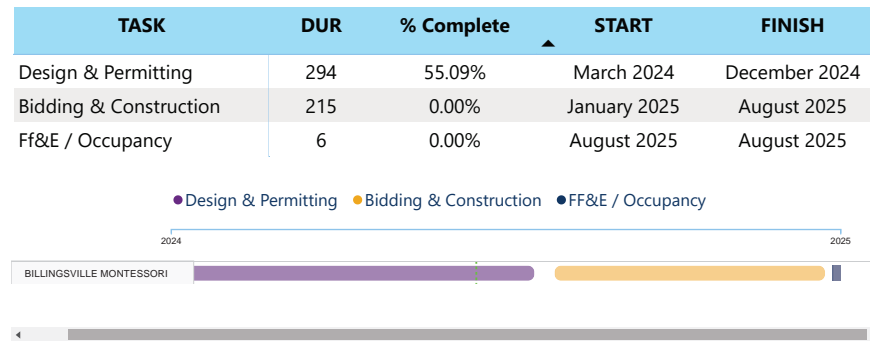
Repurpose Billingsville for relocated Montessori PK-6 program; demolish Chantilly. Cotswold to occupy Billingsville August 2025; Chantilly Montessori to occupy Billingsville 2027.



Project Status

Billingsville Montessori Upfit due diligence activities continue to progress. The architect submitted their schematic design submittal to CMS for review and comments. The project architect is actively working to develop the security vestibule and other Montessori project requirements.

Schedule





Financial Summary

Financial Summary

Budget

Contracts

Expenditures

MWSBE

FACILITY ▲	BUDGET	TOTAL COMMITTED	TO BE COMMITTED	PAID TO DATE	MWSBE %
Cotswold ES/Billingsville	\$80,555,856	\$6,398,596	\$74,157,260	\$873,889	10.44%



Project Information

Bond Program	2023 Bond
Facility Name	Northwest School of the Arts (23)
Address	1415 Beatties Ford Road Charlotte, NC 28216
Architect	LS3P Associates
Construction Manager	Balfour Beatty
Percent Complete	2%
Occupy On	August 2026

Scope of Work

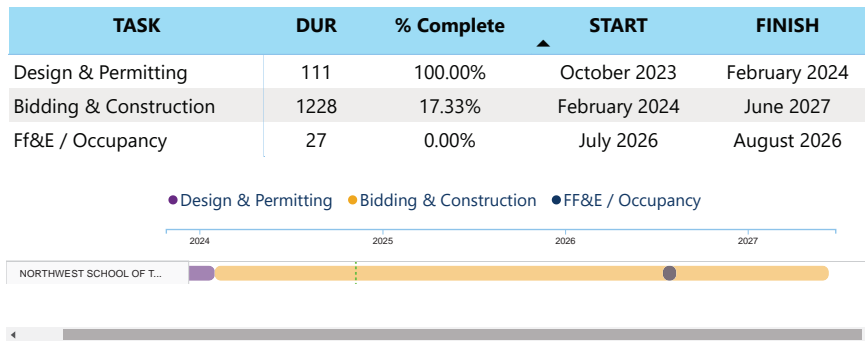
Final Phase of work to include a new specialty classroom space and 9-12 conversion/expansion.

Project Status

The Northwest School of the Arts Phase 2 is scheduled to start geo-piers the first week of July for the new building (G). HVAC Hydronic piping work has also started in building E. There have been several pre-construction meetings with sub-contractors to start work as smoothly as possible. The team is coordinating with the school for access to needed areas over the summer.



Schedule

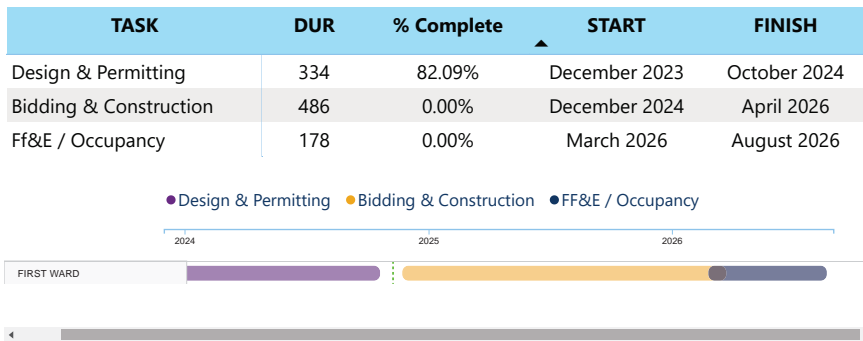




Project Information

Bond Program	2023 Bond
Facility Name	First Ward Elementary School (23)
Address	715 North Caldwell Street Charlotte, NC 28202
Architect	Boomerang Design
Construction Manager	Edifice
Percent Complete	0%
Occupy On	August 2026

Schedule



Scope of Work

Renovate First Ward as full magnet 6-8.

Project Status

The First Ward Arts Middle School Magnet design development review is complete and comments returned to the architect for incorporation into the project. The construction manager is developing their logistics plan, which will require phasing of construction work to allow work during school occupancy. CMS leadership will be invited to review the logistic plans and provide their comments during the month of July. The project's scope includes miscellaneous renovations, a security vestibule, middle school magnet arts labs, and upfitting primary classrooms to accommodate secondary school students.





Financial Summary

Financial Summary

Budget

Contracts

Expenditures

MWSBE

FACILITY ▲	BUDGET	TOTAL COMMITTED	TO BE COMMITTED	PAID TO DATE	MWSBE %
Northwest School of the Arts/First Ward	\$93,654,147	\$54,797,804	\$38,856,343	\$3,260,779	11.19%



Project Information

Bond Program	2023 Bond
Facility Name	Marie G Davis Montessori Upfit (23)
Address	3351 Griffith Street Charlotte, NC 28203
Architect	MPS
Construction Manager	TBD - Hard Bid
Percent Complete	0%
Occupy On	August 2026

Scope of Work

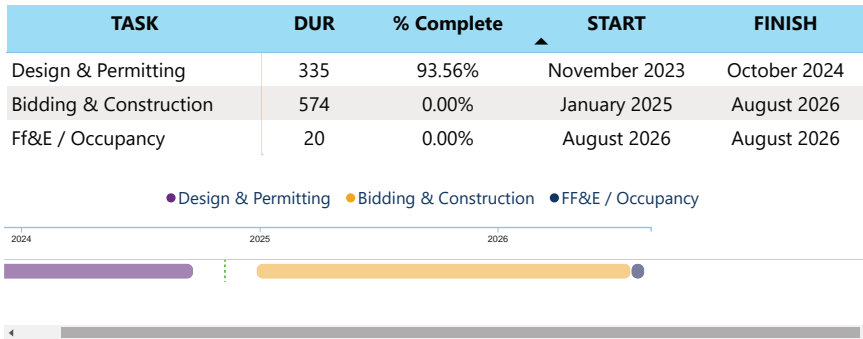
Convert to 7-12 Montessori to replace use at J.T. Williams and expand program.



Project Status

The Marie G. Davis Montessori Upfit project design continues to progress with the building permit approval. The project scope includes miscellaneous renovations and the conversion of the existing facility to a Montessori 6-12 facility including the incorporation of a security vestibule, makerspace, theatrical classroom, life skills classroom, exterior elements, renovations and up fitting primary classrooms to accommodate secondary school students.

Schedule



Financial Summary

Financial Summary

- Budget
- Contracts
- Expenditures
- MWSBE

FACILITY	BUDGET	TOTAL COMMITTED	TO BE COMMITTED	PAID TO DATE	MWSBE %
Marie G Davis Montessori Upfit	\$9,174,783	\$923,719	\$8,256,532	\$358,555	27.09%



Project Information

Bond Program	2023 Bond
Facility Name	New Second Ward High School (23)
Address	TBD
Architect	LS3P Associates
Construction Manager	Rodgers Builders, Inc. in Association with Walter B. Davis Company
Percent Complete	0%
Occupy On	August 2028

Scope of Work

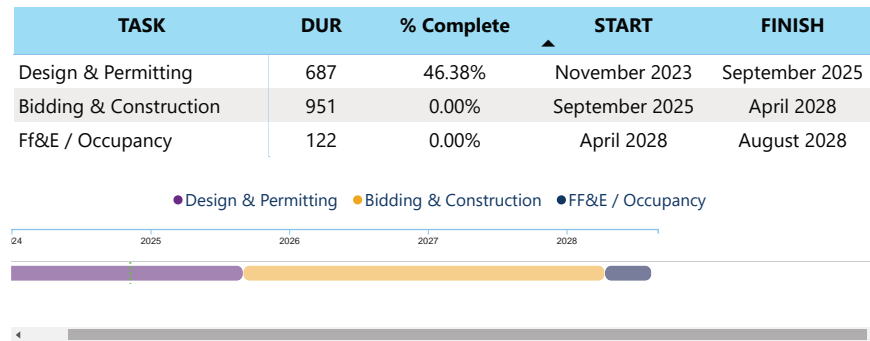
Full magnet high school on old Metro site; relocate program from Hawthorne site.



Project Status

The New Second Ward High School project schematic design is being reviewed by CMS. The new medical high school project consists of classrooms with a focus in health curriculum. The demolition of the old Metro School located on the site is underway. Clean-out activities will be occurring during November with structural demolition scheduled to begin in December. Once the site is cleared (spring 2025), additional geotechnical testing for design will occur in preparation for construction of the new school building that is scheduled to start in early 2026.

Schedule



Financial Summary

Financial Summary

- Budget
- Contracts
- Expenditures
- MWSBE

FACILITY	BUDGET	TOTAL COMMITTED	TO BE COMMITTED	PAID TO DATE	MWSBE %
New Second Ward High School	\$176,810,460	\$16,000,407	\$160,810,053	\$1,545,643	12.48%



Project Information

Bond Program	2023 Bond
Facility Name	New Middle School 1 South (23)
Address	5400 Campe Verde Lane Charlotte, NC 28277
Architect	Hord Coplan Macht, Inc.
Construction Manager	Messer Construction Company
Percent Complete	0%
Occupy On	August 2026

Scope of Work

Baseline 54-classroom Middle School facility to relieve Community House MS, Jay M. Robinson MS and Rea Farms STEAM K-8.

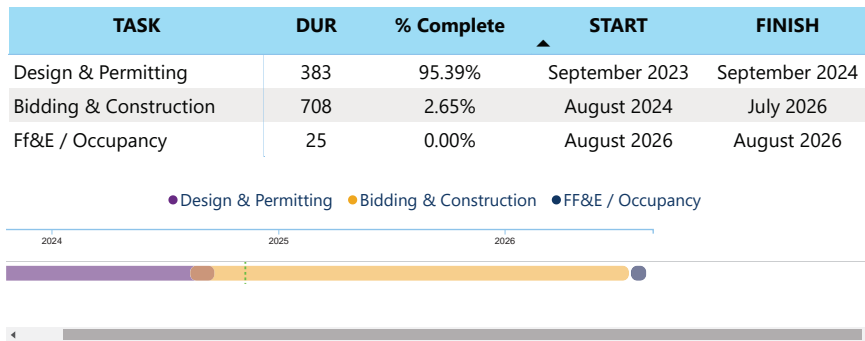


Project Status

The New Middle School #1 South project team continues with LUESA, City Engineering and Land Development building permit approval process. The remaining scope packages for the work associated with this project will be presented to the Board of Education in November. The project update meeting for the new middle school was conducted at the Ballantyne Ridge High School; interested parents, students, and staff attended. The project consists of a new middle school facility with the accompanying exterior improvements.



Schedule



Financial Summary

Financial Summary

Budget

Contracts

Expenditures

MWSBE

FACILITY	BUDGET	TOTAL COMMITTED	TO BE COMMITTED	PAID TO DATE	MWSBE %
New Middle School #1 South	\$101,089,262	\$69,045,981	\$32,043,281	\$2,496,310	16.95%



Project Information

Bond Program	2023 Bond
Facility Name	North Mecklenburg High School Replacement (23)
Address	Old Statesville Road Huntersville, NC 28078
Architect	ADW Architects
Construction Manager	New Atlantic Contracting, Inc.
Percent Complete	0%
Occupy On	August 2028

Scope of Work

Onsite replacement of balance of campus and comprehensive athletics package.

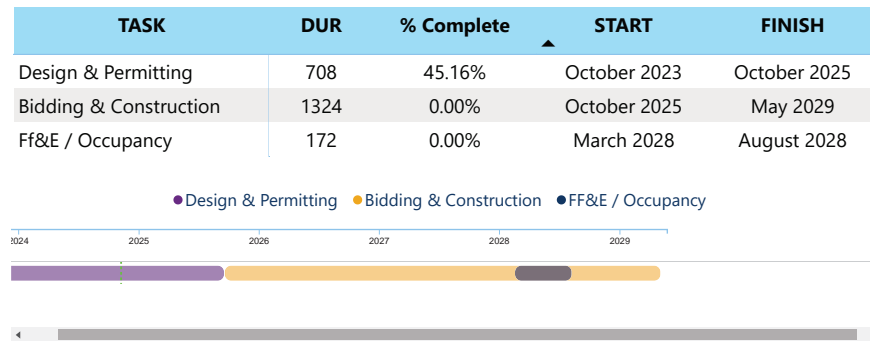


Project Status

The North Mecklenburg High School Replacement project has completed the design development phase; the architect is currently reviewing and incorporating comments into the project's design. The project update meeting was conducted at the school; interested parents, students and staff attended. As the design progresses, the construction manager continues to update logistics plans required to safely execute and coordinate the complex construction project. The project provides a full replacement of the comprehensive high school.



Schedule



Financial Summary

Financial Summary

Budget

Contracts

Expenditures

MWSBE

FACILITY	BUDGET	TOTAL COMMITTED	TO BE COMMITTED	PAID TO DATE	MWSBE %
North Mecklenburg High School Replacement	\$228,464,171	\$17,962,628	\$210,501,543	\$3,090,307	8.07%



Project Information

Bond Program	2023 Bond
Facility Name	Park Road Elementary School (23)
Address	3701 Haven Drive Charlotte, NC 28209
Architect	Ratio
Construction Manager	Vannoy-McFarland, a JV
Percent Complete	1%
Occupy On	August 2026

Scope of Work

Replace with 45-classroom school for Dilworth paired schools.

Project Status

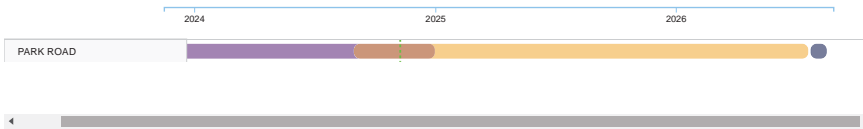
The New Park Road Elementary School design development review is complete and comments have been returned to the architect for incorporation. CMS leadership completed their review of design development documents. The construction manager is developing prequalification documents and scheduling activities as required. Demolition of the existing school is scheduled in the fall of 2024 followed by civil construction of the site and then the new school construction. The project consists of a new elementary school.



Schedule

TASK	DUR	% Complete	START	FINISH
Design & Permitting	421	67.45%	November 2023	January 2025
Bidding & Construction	690	0.42%	September 2024	July 2026
Ff&E / Occupancy	25	0.00%	August 2026	August 2026

● Design & Permitting ● Bidding & Construction ● FF&E / Occupancy





Project Information

Bond Program	2023 Bond
Facility Name	Dilworth Latta (23)
Address	405 East Park Avenue Charlotte, NC 28203
Architect	
Construction Manager	
Percent Complete	1%
Occupy On	August 2027

Scope of Work

Repurpose Dilworth for a TBD middle school magnet.



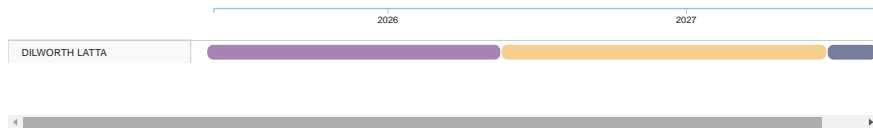
Project Status

The Dilworth Latta project is scheduled to start design in third quarter of 2025. Minor up-fit construction work is underway to accommodate two additional classrooms for occupancy in August 2024.

Schedule

TASK	DUR	% Complete	START	FINISH
Design & Permitting	359	0.00%	June 2025	May 2026
Bidding & Construction	398	0.00%	May 2026	June 2027
Ff&E / Occupancy	60	0.00%	July 2027	August 2027

● Design & Permitting ● Bidding & Construction ● FF&E / Occupancy

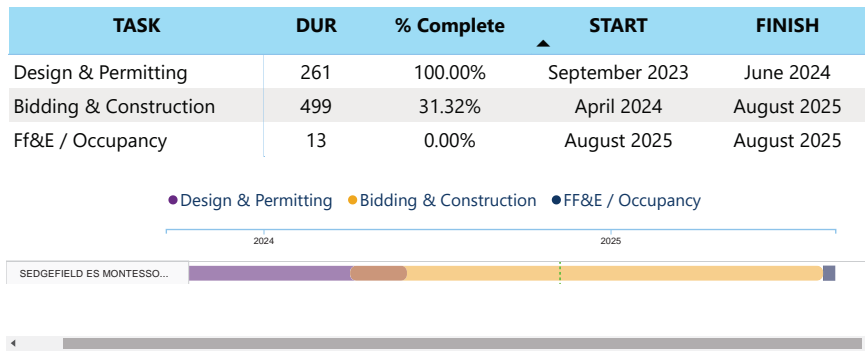




Project Information

Bond Program	2023 Bond
Facility Name	Sedgefield Montessori (23)
Address	715 Hartford Avenue Charlotte, NC 28209
Architect	WHN
Construction Manager	Vannoy-McFarland, a JV
Percent Complete	1%
Occupy On	August 2024

Schedule



Scope of Work

Convert for Montessori PK-6 program.

Project Status

The Sedgefield Elementary School Montessori Upfit project continues to progress with building permit approval of Phase 2. Phase 2 includes the incorporation of life skills classrooms, security vestibule and minor upfits/renovations to the main building.





Financial Summary

Financial Summary

Budget

Contracts

Expenditures

MWSBE

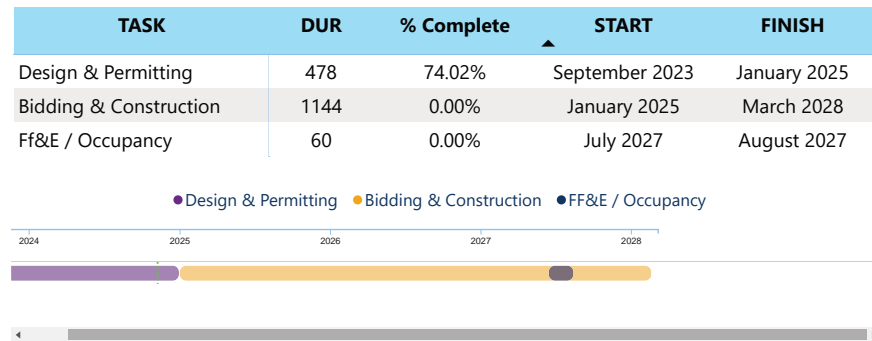
FACILITY ▲	BUDGET	TOTAL COMMITTED	TO BE COMMITTED	PAID TO DATE	MWSBE %
Park Road ES/Dilworth Latta/Sedgefield	\$89,491,971	\$25,309,075	\$64,182,896	\$4,281,113	15.54%



Project Information

Bond Program	2023 Bond
Facility Name	South Mecklenburg High School Replacement (23)
Address	8900 Park Road Charlotte, NC 28210
Architect	Morris Berg Architects
Construction Manager	Whiting-Turner Contracting Company
Percent Complete	0%
Occupy On	August 2027

Schedule



Scope of Work

Final phases of work, to include onsite replacement of balance of campus to +/- 100 classroom baseline, comprehensive athletics package.

Project Status

The South Mecklenburg High School Replacement project continues to progress in the construction document phase. CMS will receive this submittal in November. The construction manager continues to tweak the logistic plans to ensure a safe and coordinated construction environment on this occupied school campus. Focus meetings continue with CMS leadership as needed to obtain academic and operational information that improves the outcome of the design effort. The project consists of a partial campus replacement and significant improvements to the football stadium and athletic fields.



Financial Summary

Financial Summary

Budget

Contracts

Expenditures

MWSBE

FACILITY	BUDGET	TOTAL COMMITTED	TO BE COMMITTED	PAID TO DATE	MWSBE %
South Mecklenburg High School Replacement	\$127,909,253	\$11,435,450	\$116,473,803	\$2,999,219	9.32%



Project Information

Bond Program	2023 Bond
Facility Name	Beverly Woods Elementary School (23)
Address	6001 Quail Hollow Road Charlotte, NC 28210
Architect	
Construction Manager	
Percent Complete	0%
Occupy On	August 2028

Scope of Work

Onsite replacement with 45-classroom baseline school.

Project Status

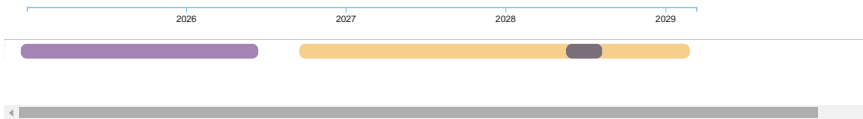
Due diligence activities are underway. Request for Qualifications for Architects and Construction Managers will be advertised Fall 2024.



Schedule

TASK	DUR	% Complete	START	FINISH
Design & Permitting	544	0.00%	January 2025	June 2026
Bidding & Construction	894	0.00%	October 2026	March 2029
Ff&E / Occupancy	84	0.00%	June 2028	August 2028

● Design & Permitting ● Bidding & Construction ● FF&E / Occupancy



Financial Summary

Financial Summary

Budget

Contracts

Expenditures

MWSBE

FACILITY	BUDGET	TOTAL COMMITTED	TO BE COMMITTED	PAID TO DATE	MWSBE %
Beverly Woods Elementary School	\$71,237,699	\$2,679,676	\$68,558,023	\$0	



Project Information

Bond Program	2023 Bond
Facility Name	Huntersville Elementary School (23)
Address	200 Gilead Road Huntersville, NC 28078
Architect	
Construction Manager	
Percent Complete	0%
Occupy On	August 2028

Scope of Work

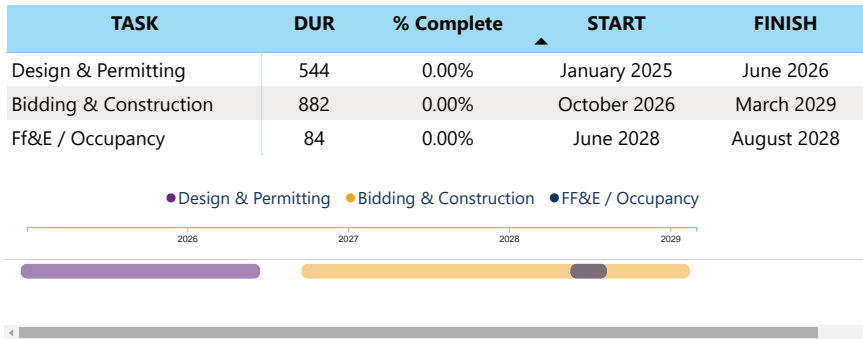
Onsite replacement with 45-classroom baseline facility.

Project Status

Due diligence activities are underway. Request for Qualifications for Architects and Construction Managers will be advertised Fall 2024.



Schedule



Financial Summary

Financial Summary

Budget

Contracts

Expenditures

MWSBE

FACILITY	BUDGET	TOTAL COMMITTED	TO BE COMMITTED	PAID TO DATE	MWSBE %
Huntersville Elementary School	\$66,235,904	\$78,195	\$66,157,709	\$0	



Project Information

Bond Program	2023 Bond
Facility Name	New Middle School 2 North (23)
Address	13832 Stumptown Road Huntersville, NC
Architect	
Construction Manager	
Percent Complete	0%
Occupy On	August 2028

Scope of Work

Baseline 54-classroom facility at Stumptown Road to relieve Bailey Road, Bradley and J.M. Alexander middle schools.

Project Status

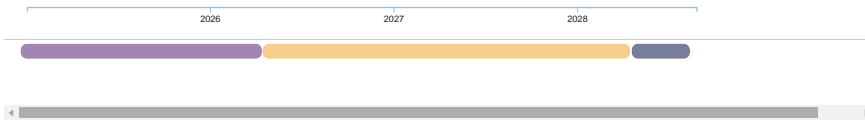
Due diligence activities are underway. Request for Qualifications for Architects and Construction Managers will be advertised Fall 2024.



Schedule

TASK	DUR	% Complete	START	FINISH
Design & Permitting	480	0.00%	January 2025	April 2026
Bidding & Construction	731	0.00%	April 2026	April 2028
Ff&E / Occupancy	116	0.00%	May 2028	August 2028

● Design & Permitting ● Bidding & Construction ● FF&E / Occupancy



Financial Summary

Financial Summary

Budget

Contracts

Expenditures

MWSBE

FACILITY	BUDGET	TOTAL COMMITTED	TO BE COMMITTED	PAID TO DATE	MWSBE %
New Middle School #2 North	\$92,371,482	\$3,425,964	\$88,945,518	\$0	



Project Information

Bond Program	2023 Bond
Facility Name	Berryhill School (23)
Address	TBD
Architect	
Construction Manager	
Percent Complete	0%
Occupy On	August 2028

Scope of Work

Offsite replacement and demolish existing building.

Project Status

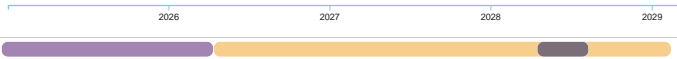
Due diligence activities are underway. Request for Qualifications for Architects and Construction Managers will be advertised Fall 2024.



Schedule

TASK	DUR	% Complete	START	FINISH
Design & Permitting	480	0.00%	January 2025	April 2026
Bidding & Construction	1037	0.00%	April 2026	February 2029
Ff&E / Occupancy	116	0.00%	May 2028	August 2028

● Design & Permitting ● Bidding & Construction ● FF&E / Occupancy



Financial Summary

Financial Summary

Budget

Contracts

Expenditures

MWSBE

FACILITY	BUDGET	TOTAL COMMITTED	TO BE COMMITTED	PAID TO DATE	MWSBE %
Berryhill School	\$104,286,451	\$3,806,455	\$100,479,996	\$0	

PROCUREMENT

**UPCOMING MAJOR CONSTRUCTION
PROCUREMENT DATES**
Three-Month Look Ahead

Project

Bid Period*

New Middle School #1 South
Managed by CM (Messer Construction)

October 1, 2024

New Elementary School at Park Road GMP #1B Sitework
Managed by CM (Vannoy/McFarland JV)

October 3, 2024

Sedgefield Montessori School Phase 2
Managed by CM (Vannoy/McFarland JV)

October 4, 2024

New Elementary School at Park Road Phase #2
Managed by CM (Vannoy/McFarland JV)

December 2024

First Ward
Managed by CM (Edifice)

January 2025

Request for Qualifications

Architectural Design Services 2024

October 14 – November 14, 2024

Construction Manager at Risk 2024

October 28 – November 21, 2024

** NOTE: Work In Progress...Dates Subject to Change.*

MWSBE

MWSBE

The Diversity & Inclusion team conducted several individual virtual orientations with new MWSBE contractors and prime contractors. In addition, team members also attended/hosted the following outreach sessions/pre-bid meetings and/or workforce development opportunities:

- New Middle School – Rebid
- Sedgefield Montessori –Bid Opening (Phase 2)
- Park Road -Sitework Bid Opening
- First Ward Project Update Meeting
- Park Road Outreach
- South Mecklenburg HS Outreach
- UMCNC Annual Meeting
- Piedmont MED Week
- AE RFQ Pre-Proposal Conference
- Statewide Minority Enterprise Development Week
- Charlotte Minority Enterprise Development Week hosted by Charlotte Area Transit Systems; Charlotte-Mecklenburg Schools; City of Charlotte, Central Piedmont Community College, Hispanic Contractors Association, Inlivian, Mecklenburg County. Metrolina Minority Contractors Association, National Institute Minority Economic Development, Women Business Center Charlotte. Attendees participated in a variety of workshops, Golf Tournament, Business Expo and Awards Celebration Luncheon.



We would like to thank the following sponsors: Atrium Health, Charlotte-Mecklenburg Schools, Edifice, Turner Construction, Metcon, Messer Construction, LeChase/Jacobs/Leeper, Vannoy/McFarland, Superior Mechanical, MEG/CBRE/TRS&I/Brownstone, Whiting-Turner, Balfour Beatty, Brownstone, Clancy & Theys, Holder/Edison Foard/Leeper, NJR Construction, DiverseCity Services, Aspire Community Capital, Barton Marlow, Elford, Inc, LeChase, Stewart, Taylor Interiors, ADW Architects, CATS, City of Charlotte, D.A. Everett, Jennifer Temps, MS3P, MMCA, New Atlantic Contracting, Optima Engineering, Self-Help Credit Union, WBCC, Informatic Concepts, Rodgers Builders, Terracon, CMTA, HCAC, Charlotte Douglas Airport, REI Engineers, CATE Services, E2 Mechanical, Mitchell Consulting Group, TRS&I Group, W.C. Construction, Carolina Signs and Wonders and Yummi Muffin.

Workforce Development

Associated Builders and Contractors of the Carolinas (ABC Carolinas) relaunched the **Charlotte Build-A-SHED** competition on November 15. This program engages high school students and connects them with general contractors and specialty trade contractors to complete a 6' x 8'-6" playhouse in seven hours. The competition will take place at Fessler & Bowman's Charlotte office located at 10616 Westlake Drive. [ABC Carolinas Supports Future Talent Pipeline in Charlotte with Relaunch of High School Build-A-Shed Competition](#). The following teams will take part in this year's event with the corresponding general contractor and specialty contractor:

A.L. Brown High School - Frampton Construction and Starr Electric Company

Independence High School - Swinerton and Doggett Concrete

Palisades High School - Messer Construction and Charlotte Mechanical

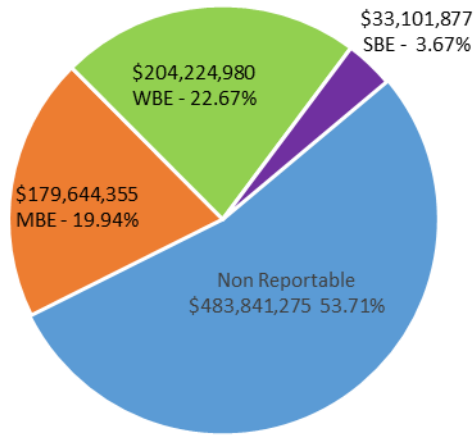
The ROC - Brasfield & Gorrie and Adams Electric

The LeChase/Jacobs/Leeper team sponsored the ACE Mentors Independence High School Session #2 by purchasing mini bricks and mortar for the students to create brick walls or pavers while learning about masonry construction in general. A structural EIT from Stewart Engineering was in attendance to speak about the profession and path to Licensure.

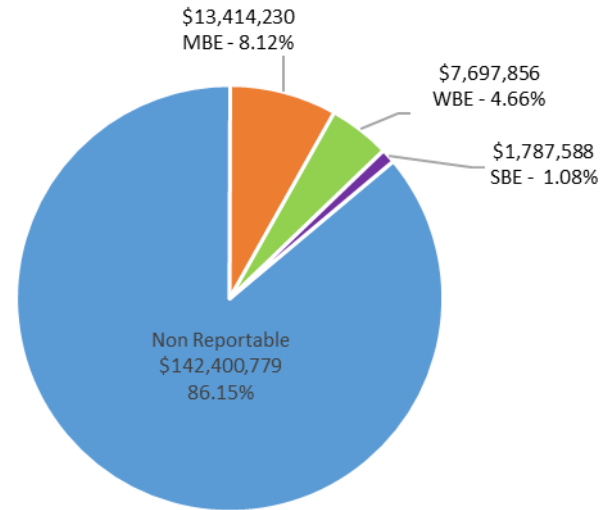
The team continues to identify opportunities and work with contractors and service providers interested in bidding on the upcoming school projects utilizing multiple communication methods. Contractors are encouraged to review the [CMS Bond Construction Website](#), [Calendar](#), bid advertisements in The Charlotte Observer and register as a vendor on the North Carolina electronic Vendor Portal (eVP).

MWSBE Participation

The MWSBE utilization related to design and construction of the **2017** bond projects is **46.28%** of which includes 19.94% (\$179,644,355) participation by minority contractors, 22.67% (\$204,224,980) by women contractors and 3.67% (\$33,101,877) participation by small business contractors. This accounts for more than \$416 million of utilization by Minority, Women and Small Business Contractors.



The MWSBE utilization related to design and construction of the **2023** bond projects is **13.85%** of which includes 8.12% (\$13,414,230) participation by minority contractors, 4.66% (\$7,697,856) by women contractors and 1.08% (\$1,787,588) participation by small business contractors. This accounts for more than \$22 million of utilization by Minority, Women and Small Business Contractors.



MWSBE Participation Commitments - Design and Construction

Charlotte-Mecklenburg Schools

2017 Bond

October 2024 Monthly Bond Report

Facility	Contract Amount	African American MBE\$	%	Other MBE \$	%	Total MBE \$	%	Other WBE \$	%	Other SBE \$	%	Total	%
<u>Ballantyne Ridge High School (17)</u>	\$134,431,639	\$3,193,751	2.38%	\$6,377,202	4.74%	\$9,570,953	7.12%	\$7,272,935	5.41%	\$7,100,161	5.28%	\$23,944,050	17.81%
<u>Briarwood Elementary School (17)</u>	\$28,327,548	\$4,038,457	14.26%	\$2,135,619	7.54%	\$6,174,076	21.80%	\$2,187,249	7.72%	\$187,102	0.66%	\$8,548,427	30.18%
<u>Bruns Avenue Elementary School (17)</u>	\$44,606,626	\$3,865,518	8.67%	\$3,801,016	8.52%	\$7,666,534	17.19%	\$4,886,594	10.95%	\$2,312,654	5.18%	\$14,865,782	33.33%
<u>Career and Technology Education (17)</u>	\$6,832,606	\$525,995	7.70%	\$332,511	4.87%	\$858,506	12.56%	\$221,655	3.24%	\$65,475	0.96%	\$1,145,636	16.77%
<u>Charlotte-Mecklenburg Academy (17)</u>	\$16,883,930	\$198,536	1.18%	\$1,031,692	6.11%	\$1,230,228	7.29%	\$928,655	5.50%	\$13,200	0.08%	\$2,172,083	12.86%
<u>Collinswood Language Academy (17)</u>	\$38,527,704	\$650,587	1.69%	\$1,613,104	4.19%	\$2,263,691	5.88%	\$11,363,565	29.49%	\$8,328	0.02%	\$13,635,584	35.39%
<u>E.E. Waddell (17)</u>	\$2,157,197	\$53,893	2.50%	\$0	0.00%	\$53,893	2.50%	\$69,124	3.20%	\$0	0.00%	\$123,017	5.70%
<u>East Mecklenburg High School (17)</u>	\$12,642,198	\$603,811	4.78%	\$532,460	4.21%	\$1,136,271	8.99%	\$490,364	3.88%	\$681,075	5.39%	\$2,307,710	18.25%
<u>Esperanza Global Academy (17)</u>	\$39,393,081	\$9,397,026	23.85%	\$3,700,782	9.39%	\$13,097,808	33.25%	\$24,734,811	62.79%	\$1,513,957	3.84%	\$39,346,575	99.88%
<u>Garinger High School (17)</u>	\$3,114,094	\$105,972	3.40%	\$363,897	11.69%	\$469,868	15.09%	\$498,134	16.00%	\$251,932	8.09%	\$1,219,935	39.17%
<u>Grove Park Elementary School (17)</u>	\$38,471,424	\$5,299,456	13.78%	\$3,772,013	9.80%	\$9,071,469	23.58%	\$2,580,361	6.71%	\$49,132	0.13%	\$11,700,962	30.41%
<u>Harding High School (17)</u>	\$13,015,986	\$1,504,505	11.56%	\$309,667	2.38%	\$1,814,172	13.94%	\$4,050,417	31.12%	\$36,861	0.28%	\$5,901,449	45.34%
<u>JT Williams (17)</u>	\$15,293,165	\$740,160	4.84%	\$379,844	2.48%	\$1,120,004	7.32%	\$3,832,205	25.06%	\$51,800	0.34%	\$5,004,009	32.72%
<u>Knights View Elementary School (17)</u>	\$45,420,860	\$5,880,253	12.95%	\$1,770,289	3.90%	\$7,650,542	16.84%	\$10,854,671	23.90%	\$2,563,223	5.64%	\$21,068,436	46.38%
<u>Lansdowne Elementary School (17)</u>	\$30,688,137	\$2,890,574	9.42%	\$882,139	2.87%	\$3,772,713	12.29%	\$2,490,921	8.12%	\$1,973,431	6.43%	\$8,237,065	26.84%
<u>Lincoln Heights Elementary School (17)</u>	\$2,781,343	\$418,018	15.03%	\$18,800	0.68%	\$436,818	15.71%	\$72,406	2.60%	\$73,077	2.63%	\$582,300	20.94%
<u>Mint Hill Elementary School (17)</u>	\$25,946,007	\$5,223,675	20.13%	\$17,791,909	68.57%	\$23,015,584	88.71%	\$1,192,408	4.60%	\$308,370	1.19%	\$24,516,362	94.49%
<u>Montclair Elementary School (17)</u>	\$26,093,784	\$3,593,852	13.77%	\$2,341,048	8.97%	\$5,934,900	22.74%	\$5,775,745	22.13%	\$493,707	1.89%	\$12,204,352	46.77%
<u>Mountain Island Lake Academy (17)</u>	\$11,714,739	\$152,250	1.30%	\$744,266	6.35%	\$896,517	7.65%	\$927,916	7.92%	\$15,300	0.13%	\$1,839,733	15.70%
<u>North Academy of World Languages (17)</u>	\$38,354,285	\$1,770,068	4.62%	\$1,575,864	4.11%	\$3,345,931	8.72%	\$4,231,632	11.03%	\$436,793	1.14%	\$8,014,357	20.90%
<u>Northwest School of the Arts (17)</u>	\$9,203,266	\$1,287,042	13.98%	\$309,525	3.36%	\$1,596,567	17.35%	\$2,684,844	29.17%	\$0	0.00%	\$4,281,411	46.52%
<u>Palisades High School (17)</u>	\$97,241,537	\$13,482,757	13.87%	\$7,641,104	7.86%	\$21,123,862	21.72%	\$8,317,153	8.55%	\$7,698,589	7.92%	\$37,139,603	38.19%
<u>Shamrock Gardens Elementary School (17)</u>	\$27,133,018	\$2,478,054	9.13%	\$1,636,383	6.03%	\$4,114,438	15.16%	\$21,128,435	77.87%	\$259,554	0.96%	\$25,502,427	93.99%
<u>Sharon Elementary School (17)</u>	\$8,534,491	\$438,383	5.14%	\$283,497	3.32%	\$721,880	8.46%	\$926,873	10.86%	\$106,444	1.25%	\$1,755,197	20.57%

Facility	Contract Amount	African American MBE\$	%	Other MBE \$	%	Total MBE \$	%	Other WBE \$	%	Other SBE \$	%	Total	%
<u>South Academy of International Lang</u>	\$37,153,679	\$6,023,142	16.21%	\$2,431,071	6.54%	\$8,454,213	22.75%	\$10,945,346	29.46%	\$313,999	0.85%	\$19,713,558	53.06%
<u>South Mecklenburg High School (17)</u>	\$15,559,414	\$2,252,188	14.47%	\$1,290,610	8.29%	\$3,542,798	22.77%	\$304,794	1.96%	\$82,420	0.53%	\$3,930,012	25.26%
<u>South Pine Academy (17)</u>	\$26,196,854	\$916,165	3.50%	\$19,052,520	72.73%	\$19,968,685	76.23%	\$4,342,256	16.58%	\$237,754	0.91%	\$24,548,695	93.71%
<u>West Charlotte High School (17)</u>	\$95,399,047	\$14,488,288	15.19%	\$5,259,935	5.51%	\$19,748,223	20.70%	\$65,658,505	68.83%	\$5,213,393	5.46%	\$90,620,120	94.99%
<u>West Mecklenburg High School (17)</u>	\$9,810,566	\$283,809	2.89%	\$509,403	5.19%	\$793,212	8.09%	\$1,255,006	12.79%	\$1,054,146	10.75%	\$3,102,365	31.62%
Grandtotal	\$900,928,224	\$91,756,183	10.18%	\$87,888,172	9.76%	\$179,644,355	19.94%	\$204,224,980	22.67%	\$33,101,877	3.67%	\$416,971,212	46.28%

MWSBE Participation Commitments - Design and Construction

Charlotte-Mecklenburg Schools

2023 Bond

October 2024 Monthly Bond Report

Facility	Contract Amount	African American MBE\$	%	Other MBE \$	%	Total MBE \$	%	Other WBE \$	%	Other SBE \$	%	Total	%
<u>Cotswold ES/Billingsville (23)</u>	\$3,432,675	\$46,700	1.36%	\$72,200	2.10%	\$118,900	3.46%	\$106,630	3.11%	\$132,850	3.87%	\$358,380	10.44%
<u>Marie G Davis Montessori Upfit (23)</u>	\$577,466	\$0	0.00%	\$15,000	2.60%	\$15,000	2.60%	\$119,245	20.65%	\$29,996	5.19%	\$164,241	28.44%
<u>New Middle School 1 South (23)</u>	\$64,972,536	\$2,362,149	3.64%	\$5,143,047	7.92%	\$7,505,196	11.55%	\$3,317,834	5.11%	\$189,750	0.29%	\$11,012,780	16.95%
<u>New Second Ward High School (23)</u>	\$7,761,463	\$0	0.00%	\$113,940	1.47%	\$113,940	1.47%	\$204,613	2.64%	\$650,000	8.37%	\$968,553	12.48%
<u>North Mecklenburg High School Repla</u>	\$9,583,619	\$0	0.00%	\$575,100	6.00%	\$575,100	6.00%	\$52,891	0.55%	\$145,450	1.52%	\$773,441	8.07%
<u>Northwest School of the Arts/First Wa</u>	\$51,267,946	\$1,171,234	2.28%	\$1,501,165	2.93%	\$2,672,399	5.21%	\$2,971,759	5.80%	\$95,077	0.19%	\$5,739,235	11.19%
<u>Park Road/Dilworth Latta/Sedgefield (</u>	\$20,946,899	\$1,675,009	8.00%	\$594,437	2.84%	\$2,269,445	10.83%	\$478,348	2.28%	\$506,465	2.42%	\$3,254,259	15.54%
<u>South Mecklenburg High School Repla</u>	\$6,750,049	\$49,250	0.73%	\$95,000	1.41%	\$144,250	2.14%	\$446,535	6.62%	\$38,000	0.56%	\$628,785	9.32%
Grandtotal	\$165,292,653	\$5,304,341	3.21%	\$8,109,888	4.91%	\$13,414,230	8.12%	\$7,697,856	4.66%	\$1,787,588	1.08%	\$22,899,674	13.85%

FINANCIALS

FINANCIALS

Bond Progress Summary

Funding Source and Value		Amount Committed/Pending	Amount Paid to Date	Amount Expended This Period
2017 Bond	\$1,005,473,960	\$977,920,117	\$943,879,195	\$4,310,748
2023 Bond	\$2,500,000,000	\$212,061,010	\$23,451,822	\$4,546,007
Grand Total	\$3,505,473,960	\$1,189,981,127	\$967,331,017	\$8,856,755

**CHARLOTTE-MECKLENBURG BOARD OF EDUCATION
2017 BOND SERIES-CAPITAL IMPROVEMENT PROGRAMS
BUDGET STATUS REPORT**

	Original Project Budget	Current Project Budget	Committed Amount	Approved Change Orders	Total Committed	Pending Commitments	To Be Committed	Prev Paid To Date	Paid To Date	Balance To Complete	Monthly Expenditure
	(A)	(B)	(C)	(D)	(E)=(C+D)	(F)	(G)=(B-E-F)	(H)	(I)	(J)=(B-I)	(K)=(I-H)
<u>A. REPLACEMENT & RENOVATIONS</u>											
1 Briarwood Elementary *	\$29,091,619	\$31,136,111	\$4,730,737	\$26,405,374	\$31,136,111	\$0	\$0	\$31,136,111	\$31,136,111	\$0	\$0
2 Bruns Academy Replacement	\$34,207,808	\$48,859,580	\$3,917,208	\$42,470,961	\$46,388,169	\$420,882	\$2,047,449	\$36,662,288	\$37,035,959	\$11,823,622	\$373,671
3 Career & Technology Education Upgrades	\$10,101,734	\$6,984,007	\$3,665,419	\$3,318,588	\$6,984,007	\$0	\$0	\$6,984,007	\$6,984,007	\$0	\$0
4 Collinswood K-8 *	\$44,172,540	\$41,401,384	\$4,916,632	\$36,484,752	\$41,401,384	\$0	\$0	\$41,401,384	\$41,401,384	\$0	\$0
5 East Mecklenburg HS	\$12,771,594	\$10,141,268	(\$1,659,510)	\$11,800,778	\$10,141,268	\$0	\$0	\$10,141,268	\$10,141,268	\$0	\$0
6 Garinger HS	\$13,936,979	\$4,204,948	\$690,888	\$3,259,238	\$3,950,126	\$0	\$254,822	\$3,946,199	\$3,946,199	\$258,749	\$0
7 Harding University High *	\$18,330,263	\$13,747,878	\$2,045,267	\$11,702,610	\$13,747,877	\$0	\$0	\$13,747,877	\$13,747,877	\$0	\$0
8 Charlotte-Mecklenburg Academy (FKA -EC Specialty	\$18,957,960	\$17,699,220	\$2,175,504	\$15,523,717	\$17,699,220	\$0	\$0	\$17,699,220	\$17,699,220	\$0	\$0
9 Lansdowne Elementary	\$29,391,270	\$33,554,188	\$3,926,495	\$29,426,290	\$33,352,785	(\$542,421)	\$743,823	\$32,674,813	\$32,674,813	\$879,375	\$0
10 Lincoln Heights Elementary	\$3,740,478	\$4,333,830	\$2,877,803	\$738,264	\$3,616,067	\$0	\$717,763	\$3,304,562	\$3,383,818	\$950,012	\$79,256
11 Montclair Elementary Replacement *	\$28,559,390	\$28,200,634	\$2,426,761	\$25,773,873	\$28,200,634	\$0	\$0	\$28,200,634	\$28,200,634	\$0	\$0
12 Mountain Island k-8	\$9,218,439	\$13,239,686	\$1,658,934	\$10,899,213	\$12,558,147	\$2,000	\$679,539	\$12,485,748	\$12,485,868	\$753,819	\$120
13 Northwest School of the Arts	\$17,632,202	\$11,417,000	\$5,229,779	\$4,781,224	\$10,011,003	\$2,000	\$1,403,997	\$7,962,867	\$7,962,867	\$3,454,133	\$0
14 Shamrock Gardens Elementary *	\$29,890,351	\$29,757,027	\$3,422,159	\$26,334,868	\$29,757,027	\$0	\$0	\$29,757,027	\$29,757,027	\$0	\$0
15 Sharon Elementary	\$7,706,528	\$9,088,894	\$1,430,033	\$7,658,861	\$9,088,894	\$0	\$0	\$9,088,894	\$9,088,894	\$0	\$0
16 South Mecklenburg HS	\$13,352,143	\$17,322,927	\$1,912,897	\$14,688,205	\$16,601,101	\$37,407	\$684,419	\$12,265,796	\$13,967,906	\$3,355,021	\$1,702,110
17 E.E. Waddell Magnet HS	\$4,571,709	\$3,770,925	\$2,949,431	\$123,480	\$3,072,911	\$0	\$698,014	\$3,065,863	\$3,065,863	\$705,062	\$0
18 West Charlotte HS Replacement	\$109,977,166	\$103,466,299	\$11,723,563	\$91,681,984	\$103,405,547	\$8,250	\$52,502	\$102,788,381	\$102,794,658	\$671,641	\$6,278
19 West Mecklenburg HS	\$11,065,440	\$6,260,654	(\$2,370,464)	\$8,631,118	\$6,260,654	\$0	\$0	\$6,260,654	\$6,260,654	\$0	\$0
20 John Taylor Williams	\$13,964,339	\$16,058,504	\$3,565,114	\$12,267,108	\$15,832,222	\$0	\$226,282	\$15,828,031	\$15,828,031	\$230,473	\$0
Total Replacement & Renovations	\$460,639,952	\$450,644,964	\$59,234,649	\$383,970,505	\$443,205,154	(\$71,882)	\$7,508,611	\$425,401,624	\$427,563,058	\$23,081,907	\$2,161,434
<u>B. RESPONSE TO ENROLLMENT GROWTH</u>											
1 South Academy of International Languages	\$45,359,367	\$40,603,148	\$5,969,503	\$34,633,646	\$40,603,148	\$0	\$0	\$40,603,147	\$40,603,147	\$0	\$0
2 North Academy of World Languages (FKA - New K-8	\$45,359,367	\$41,742,062	\$6,024,166	\$35,717,896	\$41,742,062	\$0	\$0	\$41,742,062	\$41,742,062	\$0	\$0
3 South Pine Academy (FKA - New ES Nations Ford, S	\$29,173,829	\$30,477,421	\$6,883,836	\$23,593,585	\$30,477,421	\$0	\$0	\$30,477,421	\$30,477,421	\$0	\$0
4 Mint Hill Elementary School	\$29,988,332	\$29,026,764	\$3,296,439	\$25,730,325	\$29,026,764	\$0	\$0	\$29,026,764	\$29,026,764	\$0	\$0
5 Esperanza Global Academy (FKA New ES - Windsor	\$30,422,230	\$45,297,022	\$13,338,897	\$31,530,754	\$44,869,651	\$1,200	\$426,171	\$44,147,241	\$44,188,510	\$1,108,512	\$41,269
6 Knights View Elementary School - Elon/Hawk Ridge	\$30,426,712	\$59,997,684	\$9,547,452	\$43,650,774	\$53,198,226	\$6,500	\$6,792,957	\$49,257,001	\$49,272,224	\$10,725,459	\$15,223
7 Grove Park Elementary (FKA New ES - Hidden Valle	\$30,518,345	\$42,890,747	\$6,316,179	\$36,115,060	\$42,431,239	\$2,000	\$457,509	\$42,096,901	\$42,401,797	\$488,951	\$304,895
8 Palisades High School	\$109,908,793	\$106,172,644	\$10,856,374	\$95,084,185	\$105,940,559	\$20,042	\$212,043	\$105,868,462	\$105,868,462	\$304,182	\$0
9 Ballantyne Ridge High School	\$110,287,621	\$158,621,503	\$14,400,764	\$131,737,500	\$146,138,264	\$329,769	\$12,143,590	\$130,947,823	\$132,735,750	\$25,885,753	\$1,787,928
Total Response to Enrollment Growth	\$461,444,596	\$554,828,995	\$76,633,610	\$457,793,724	\$534,427,334	\$359,511	\$20,032,270	\$514,166,823	\$516,316,137	\$38,512,858	\$2,149,315
<u>C. CONTINGENCY</u>											
	\$0	\$0	\$0	\$0	\$0	\$0	\$0	\$0	\$0	\$0	\$0
Total Contingency	\$0	\$0	\$0	\$0	\$0	\$0	\$0	\$0	\$0	\$0	\$0

**CHARLOTTE-MECKLENBURG BOARD OF EDUCATION
2017 BOND SERIES-CAPITAL IMPROVEMENT PROGRAMS
BUDGET STATUS REPORT**

	Original Project Budget	Current Project Budget	Committed Amount	Approved Change Orders	Total Committed	Pending Commitments	To Be Committed	Prev Paid To Date	Paid To Date	Balance To Complete	Monthly Expenditure
	(A)	(B)	(C)	(D)	(E)=C+D	(F)	(G)=(B-E-F)	(H)	(I)	(J)=(B-I)	(K)=(I-H)
TOTAL LOCAL BOND PROGRAM	\$922,084,548	\$1,005,473,960	\$135,868,259	\$841,764,230	\$977,632,488	\$287,629	\$27,540,880	\$939,568,447	\$943,879,195	\$61,594,765	\$4,310,748

Original project estimated costs approved by the Board Of Education on July 25, 2017 approved by the voters of Mecklenburg County on November 7, 2017.

*Project included in \$33.2M early funding approved by Board Of Education on August 9, 2016 and Mecklenburg Board of County Commissioners on September 6, 2016. On February 19, 2019 an additional \$8M was approved for New Elementary School - Elon/Hawk Ridge Relief site.

*Current Budget includes an additional \$89.2M to fund increase land and construction costs. The additional funds were approved by the Board of County Commissioners on June 16, 2020.

The New Elementary School - Elon/Hawk Ridge Relief current Budget includes 6.8M for Park and Recreation Project.

Bruns Academy Replacement current budget includes \$1.5M for Park and Recreation Project.

Current Program Budget reflects a reclass of \$7.4M in expenditures to 2007 Bond Program and \$14.4M in expenditures to 2013 Bond Program.

**CHARLOTTE-MECKLENBURG BOARD OF EDUCATION
2023 BOND SERIES-CAPITAL IMPROVEMENT PROGRAMS
BUDGET STATUS REPORT**

	Original Project Budget	Current Project Budget	Committed Amount	Approved Change Orders	Total Committed	Pending Commitments	To Be Committed	Prev Paid To Date	Paid To Date	Balance To Complete	Monthly Expenditure
	(A)	(B)	(C)	(D)	(E)=C+D	(F)	(G)=(B-E-F)	(H)	(I)	(J)=(B-I)	(K)=(I-H)
<u>A. REPLACEMENT & RENOVATIONS</u>											
1 Albemarle Road Middle School	\$97,732,036	\$97,732,036	\$0	\$0	\$0	\$0	\$97,732,036	\$0	\$0	\$97,732,036	\$0
2 Allenbrook Elementary School	\$74,244,220	\$74,244,220	\$0	\$0	\$0	\$0	\$74,244,220	\$0	\$0	\$74,244,220	\$0
3 Berryhill School	\$104,286,451	\$104,286,451	\$3,806,455	\$0	\$3,806,455	\$0	\$100,479,996	\$0	\$0	\$104,286,451	\$0
4 Beverly Woods Elementary School	\$71,237,699	\$71,237,699	\$2,679,676	\$0	\$2,679,676	\$0	\$68,558,023	\$0	\$0	\$71,237,699	\$0
5 Cochrane Collegiate Academy/iMeck	\$7,506,657	\$7,506,657	\$0	\$0	\$0	\$0	\$7,506,657	\$0	\$0	\$7,506,657	\$0
6 Cornelius Elementary School	\$76,471,997	\$76,471,997	\$0	\$0	\$0	\$0	\$76,471,997	\$0	\$0	\$76,471,997	\$0
7 Cotswold ES/Billingsville	\$80,555,856	\$80,555,856	\$6,781,245	(\$382,649)	\$6,398,596	\$0	\$74,157,260	\$873,889	\$898,316	\$79,657,540	\$24,427
8 Coulwood STEM Academy	\$92,706,982	\$92,706,982	\$0	\$0	\$0	\$0	\$92,706,982	\$0	\$0	\$92,706,982	\$0
9 E.E. Waddell High School	\$1,563,348	\$1,563,348	\$0	\$0	\$0	\$0	\$1,563,348	\$0	\$0	\$1,563,348	\$0
10 East Mecklenburg High School	\$201,339,353	\$201,339,353	\$0	\$0	\$0	\$0	\$201,339,353	\$0	\$0	\$201,339,353	\$0
11 Garinger High School	\$54,905,692	\$54,905,692	\$0	\$0	\$0	\$0	\$54,905,692	\$0	\$0	\$54,905,692	\$0
12 Harding University High School	\$202,879,499	\$202,879,499	\$0	\$0	\$0	\$0	\$202,879,499	\$0	\$0	\$202,879,499	\$0
13 Huntersville Elementary School	\$66,235,904	\$66,235,904	\$78,195	\$0	\$78,195	\$0	\$66,157,709	\$0	\$0	\$66,235,904	\$0
14 J.T. Williams	\$1,647,752	\$1,647,752	\$0	\$0	\$0	\$0	\$1,647,752	\$0	\$0	\$1,647,752	\$0
15 Marie G Davis Montessori Upfit	\$9,174,783	\$9,174,783	\$919,593	\$4,126	\$923,719	\$0	\$8,256,532	\$358,555	\$381,239	\$8,793,544	\$22,685
16 Matthews Elementary School	\$79,874,929	\$79,874,929	\$0	\$0	\$0	\$0	\$79,874,929	\$0	\$0	\$79,874,929	\$0
17 North Mecklenburg High School Replacement	\$228,464,171	\$228,464,171	\$19,104,988	(\$1,142,360)	\$17,962,628	\$0	\$210,501,543	\$3,090,307	\$4,001,557	\$224,462,614	\$911,250
18 Northwest School of the Arts/First Ward	\$93,654,147	\$93,654,147	\$5,539,098	\$49,258,706	\$54,797,804	\$36,000	\$38,820,343	\$3,260,779	\$4,868,629	\$88,785,518	\$1,607,850
19 Park Road ES/Dilworth Latta/Sedgefield	\$89,491,971	\$89,491,971	\$11,027,362	\$14,281,713	\$25,309,075	\$3,000	\$64,179,896	\$4,281,113	\$4,933,317	\$84,558,654	\$652,204
20 South Charlotte Middle School	\$7,741,099	\$7,741,099	\$0	\$0	\$0	\$0	\$7,741,099	\$0	\$0	\$7,741,099	\$0
21 South Mecklenburg High School Replacement	\$127,909,253	\$127,909,253	\$11,877,319	(\$441,869)	\$11,435,450	\$12,500	\$116,461,303	\$2,999,219	\$3,721,044	\$124,188,209	\$721,825
22 Steele Creek Elementary School	\$80,830,528	\$80,830,528	\$0	\$0	\$0	\$0	\$80,830,528	\$0	\$0	\$80,830,528	\$0
23 University Park Arts	\$73,119,088	\$73,119,088	\$0	\$0	\$0	\$0	\$73,119,088	\$0	\$0	\$73,119,088	\$0
24 Villa Heights @ Hawthorne	\$6,247,871	\$6,247,871	\$0	\$0	\$0	\$0	\$6,247,871	\$0	\$0	\$6,247,871	\$0
25 West Regional Athletic Complex	\$8,999,792	\$8,999,792	\$0	\$0	\$0	\$0	\$8,999,792	\$0	\$0	\$8,999,792	\$0
26 Wilson STEM Academy	\$92,471,565	\$92,471,565	\$0	\$0	\$0	\$0	\$92,471,565	\$0	\$0	\$92,471,565	\$0
Total Replacement & Renovations	\$2,031,292,643	\$2,031,292,643	\$61,813,931	\$61,577,667	\$123,391,597	\$51,500	\$1,907,855,014	\$14,863,862	\$18,804,103	\$2,012,488,540	\$3,940,241
<u>B. RESPONSE TO ENROLLMENT GROWTH</u>											
1 New Middle School #2 North	\$92,371,482	\$92,371,482	\$3,425,964	\$0	\$3,425,964	\$0	\$88,945,518	\$0	\$30,778	\$92,340,704	\$30,778
2 New Middle School #3 Southwest	\$98,436,153	\$98,436,153	\$0	\$0	\$0	\$0	\$98,436,153	\$0	\$0	\$98,436,153	\$0
3 New Second Ward High School	\$176,810,460	\$176,810,460	\$15,863,631	\$136,777	\$16,000,407	\$0	\$160,810,053	\$1,545,643	\$1,923,027	\$174,887,433	\$377,384
4 New Middle School #1 South	\$101,089,262	\$101,089,262	\$8,400,649	\$60,645,332	\$69,045,981	\$145,560	\$31,897,721	\$2,496,310	\$2,693,914	\$98,395,348	\$197,604
Total Response to Enrollment Growth	\$468,707,357	\$468,707,357	\$27,690,244	\$60,782,109	\$88,472,352	\$145,560	\$380,089,445	\$4,041,953	\$4,647,719	\$464,059,638	\$605,766
	\$2,500,000,000	\$2,500,000,000	\$89,504,174	\$122,359,775	\$211,863,950	\$197,060	\$2,287,944,458	\$18,905,816	\$23,451,822	\$2,476,548,178	\$4,546,007

Original Budget Projects were approved by the Board of County Commissioners on June 6, 2023 and by the voters of Mecklenburg County on November 7, 2023.

WEBSITE / SOCIAL MEDIA

BOND WEBSITE/SOCIAL MEDIA

Bond Construction Website

www.cmsbondconstruction.com

Linktree

<https://linktr.ee/cmsbondinfo>

Facebook

<https://www.facebook.com/cmsbond>

Twitter

<https://twitter.com/CMSbondinfo>

YouTube

<https://www.youtube.com/@cmsbondinfo>

Instagram

<https://www.instagram.com/cmsbondinfo>

For more information, email cmsbond@cms.k12.nc.us