

BUILDING FOR EXCELLENCE



August 2024

Bond Report



Northwest School of the Arts

CAPITAL PROGRAM SERVICES

Capital Improvement Program

AUGUST 2024
BOND REPORT

ACTIVE PROJECT SUMMARY SHEETS

PROCUREMENT

MWSBE

- 2017 MWSBE Participation Commitments
- 2023 MWSBE Participation Commitments

FINANCIALS

- Bond Progress Summary
- Change Orders < \$90,000
- Budget Status Reports
 - 2017 Bond Series
 - 2023 Bond Series

PROJECT SUMMARY SHEETS



Project Information

Bond Program	2017 Bond
Facility Name	Ballantyne Ridge High School (17)
Address	4004 Toringdon Way Charlotte, NC 28277
Architect	Ratio
Construction Manager	Messer
Percent Complete	99%
Occupy On	August 2024

Scope of Work

New 100-classroom high school to relieve South Mecklenburg, Ardrey Kell and Myers Park HS.

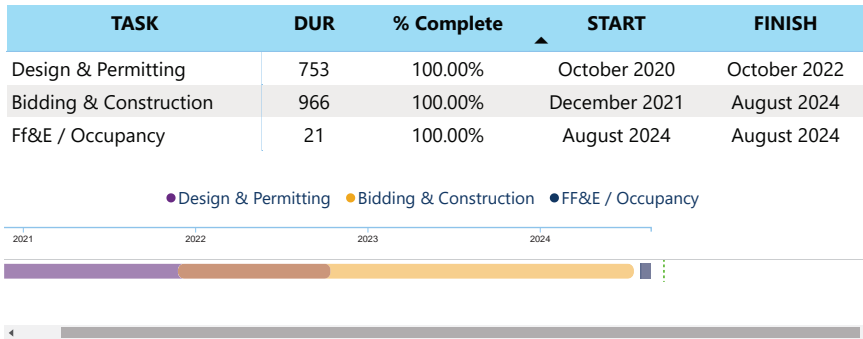


Project Status

The new Ballantyne Ridge High School was occupied by students and staff in August. Traffic signal along Community House is in temporary operational condition awaiting delivery of the permanent system. The team continues to finalize the baseball, softball and detention pond and the construction manager continues to work through the punch list and commissioning items.



Schedule



Financial Summary

Financial Summary

Budget

Contracts

Expenditures

MWSBE

FACILITY	BUDGET	TOTAL COMMITTED	TO BE COMMITTED	PAID TO DATE	MWSBE %
Ballantyne Ridge High School	\$158,621,503	\$146,172,770	\$12,448,732	\$121,977,521	19.12%



Project Information

Bond Program	2017 Bond
Facility Name	South Mecklenburg High School (17)
Address	8900 Park Road Charlotte, NC 28210
Architect	Morris Berg
Construction Manager	Balfour Beatty
Percent Complete	68%
Occupy On	January 2025

Scope of Work

Replace classroom building built in 1958 to upgrade learning conditions.

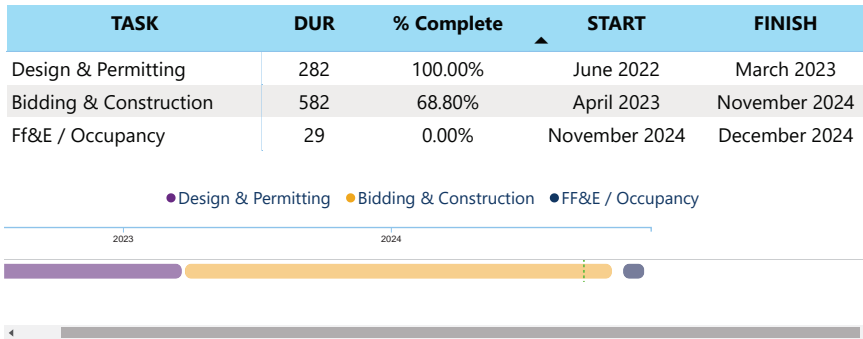


Project Status

The South Mecklenburg High School (17) construction manager continues with the new building and associated site work. The permanent sidewalk from the bus lot was completed for the start of school. The new building is progressing well, conditioned air is on, installation of the lay-in ceiling is complete, and hard tile has been set in the group restrooms.



Schedule



Financial Summary

Financial Summary

- Budget
- Contracts
- Expenditures
- MWSBE

FACILITY	BUDGET	TOTAL COMMITTED	TO BE COMMITTED	PAID TO DATE	MWSBE %
South Mecklenburg HS	\$17,322,927	\$16,124,616	\$1,198,311	\$9,626,835	25.39%



Project Information

Bond Program	2017 Bond
Facility Name	Knights View Elementary School (17)
Address	11000 Beau Riley Road Charlotte, NC 28277
Architect	Little Diversified Architects
Construction Manager	Balfour Beatty
Percent Complete	99%
Occupy On	August 2024

Scope of Work

New 45-classroom elementary school to relieve Elon, Hawk Ridge, Polo.

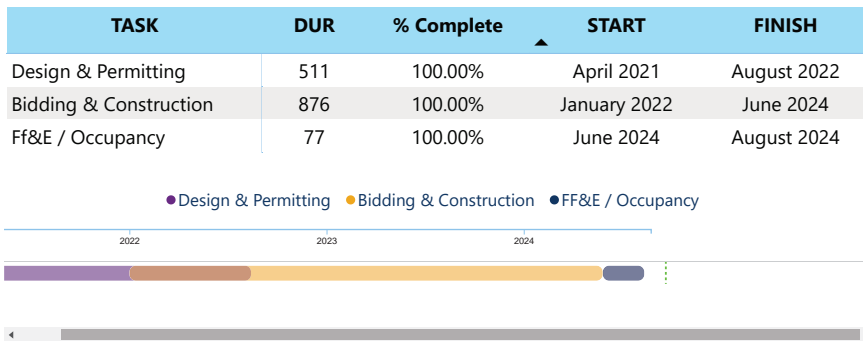


Project Status

Students and staff occupied Knights View Elementary School in August. Punch list is complete with the exception of a few low voltage items. The traffic signal at the entrance from Ardrey Kell is operational. The team continues to finalize financial and final closeout documents.



Schedule



Financial Summary

Financial Summary

Budget

Contracts

Expenditures

MWSBE

FACILITY	BUDGET	TOTAL COMMITTED	TO BE COMMITTED	PAID TO DATE	MWSBE %
Knights View Elementary School - Elon/Hawk Ridge Relief	\$59,997,683	\$53,202,131	\$6,795,553	\$48,761,207	46.38%



Project Information

Bond Program	2017 Bond
Facility Name	Bruns Avenue Elementary School (17)
Address	501 South Bruns Avenue Charlotte, NC 28208
Architect	ADW
Construction Manager	Edifice
Percent Complete	95%
Occupy On	August 2024

Scope of Work

New 45-classroom elementary school (K-5); replaces old school built in 1969.

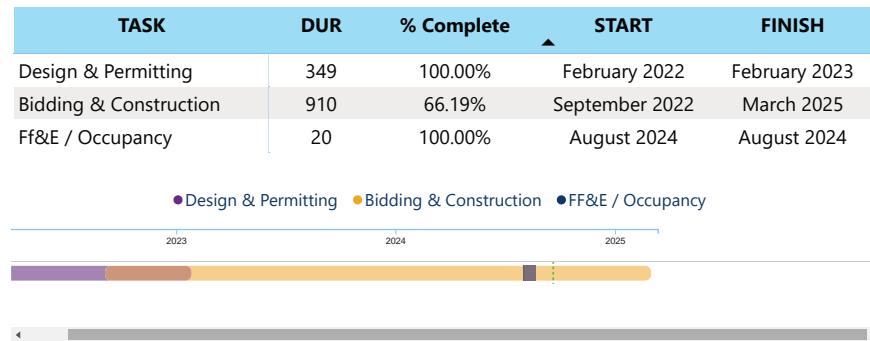


Project Status

The Bruns Avenue Elementary School Replacement project was occupied by students and staff in August. The team continues to work on punch list items and the design of a new fire hydrant connection requested by Charlotte Fire. Phase 2 is underway which includes the demolition of the old Bruns building and installation of the staff/visitor parking lot. CMS salvage operations has begun with demolition to follow. This work will continue through spring 2025.



Schedule



Financial Summary

Financial Summary

Budget

Contracts

Expenditures

MWSBE

FACILITY	BUDGET	TOTAL COMMITTED	TO BE COMMITTED	PAID TO DATE	MWSBE %
Bruns Academy Replacement	\$48,859,580	\$46,431,557	\$2,428,023	\$33,443,415	33.45%



Project Information

Bond Program	2023 Bond
Facility Name	Cotswold Elementary School (23)
Address	300 Greenwich Road Charlotte, NC 28211
Architect	Little Diversified
Construction Manager	Clancy & Theys in Partnership with The Daniele Company
Percent Complete	0%
Occupy On	August 2027

Scope of Work

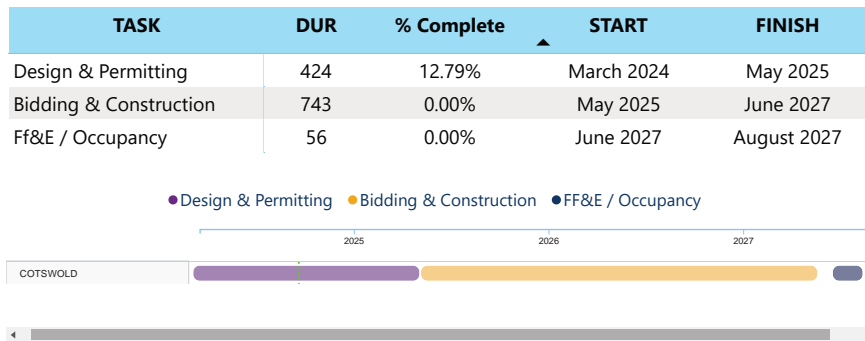
Onsite replacement, collapsing paired school into Billingsville for project duration.



Project Status

Cotswold Elementary Replacement School project continues to progress in the schematic design phase. The project consists of a replacement elementary school.

Schedule





Project Information

Bond Program	2023 Bond
Facility Name	Billingsville Montessori Upfit (23)
Address	124 Skyland Avenue Charlotte, NC 28205
Architect	WHN
Construction Manager	Clancy & Theys in Partnership with The Daniele Company
Percent Complete	0%
Occupy On	August 2025

Scope of Work

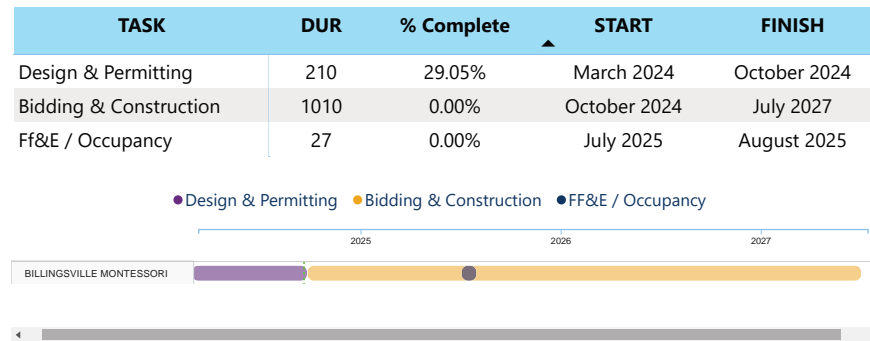
Repurpose Billingsville for relocated Montessori PK-6 program; demolish Chantilly. Cotswold to occupy Billingsville August 2025; Chantilly Montessori to occupy Billingsville 2027.



Project Status

Billingsville Montessori Upfit due diligence activities continue to progress. The architect submitted their schematic design submittal to CMS for review and comments. The project architect is actively working to develop the security vestibule and other Montessori project requirements.

Schedule





Financial Summary

Financial Summary

Budget

Contracts

Expenditures

MWSBE

FACILITY ▲	BUDGET	TOTAL COMMITTED	TO BE COMMITTED	PAID TO DATE	MWSBE %
Cotswold ES/Billingsville	\$80,555,856	\$6,387,134	\$74,168,722	\$642,675	6.94%



Project Information

Bond Program	2023 Bond
Facility Name	Northwest School of the Arts (23)
Address	1415 Beatties Ford Road Charlotte, NC 28216
Architect	LS3P Associates
Construction Manager	Balfour Beatty
Percent Complete	2%
Occupy On	August 2026

Scope of Work

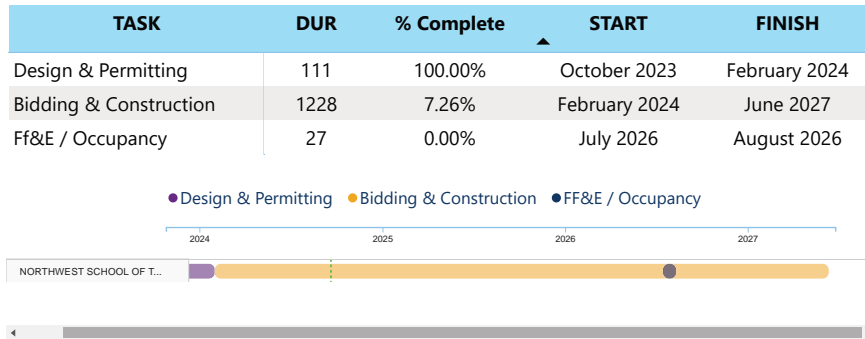
Final Phase of work to include a new specialty classroom space and 9-12 conversion/expansion.



Project Status

The Northwest School of the Arts Phase 2 is scheduled to start geo-piers the first week of July for the new building (G). HVAC Hydronic piping work has also started in building E. There have been several pre-construction meetings with sub-contractors to start work as smoothly as possible. The team is coordinating with the school for access to needed areas over the summer.

Schedule

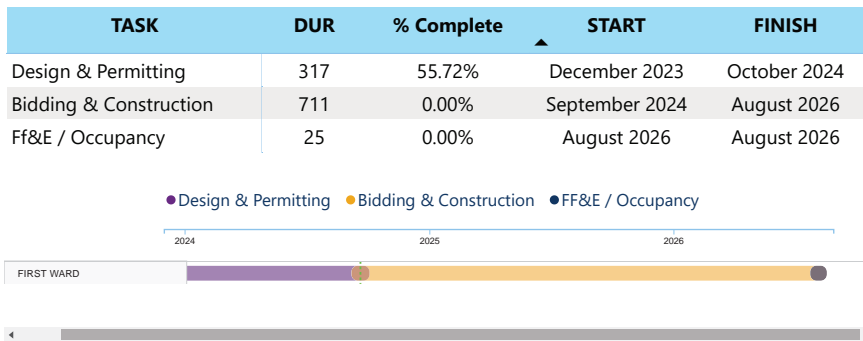




Project Information

Bond Program	2023 Bond
Facility Name	First Ward Elementary School (23)
Address	715 North Caldwell Street Charlotte, NC 28202
Architect	Boomerang Design
Construction Manager	Edifice
Percent Complete	0%
Occupancy On	August 2026

Schedule



Scope of Work

Renovate First Ward as full magnet 6-8.



Project Status

The First Ward Arts Middle School Magnet design development review is complete and comments returned to the architect for incorporation into the project. The construction manager is developing their logistics plan, which will require phasing of construction work to allow work during school occupancy. CMS leadership will be invited to review the logistic plans and provide their comments during the month of July. The project's scope includes miscellaneous renovations, a security vestibule, middle school magnet arts labs, and upfitting primary classrooms to accommodate secondary school students.





Financial Summary

Financial Summary

Budget

Contracts

Expenditures

MWSBE

FACILITY ▲	BUDGET	TOTAL COMMITTED	TO BE COMMITTED	PAID TO DATE	MWSBE %
Northwest School of the Arts/First Ward	\$93,654,147	\$54,769,423	\$38,884,724	\$1,340,397	10.41%



Project Information

Bond Program	2023 Bond
Facility Name	Sedgefield Montessori (23)
Address	715 Hartford Avenue Charlotte, NC 28209
Architect	WHN
Construction Manager	Vannoy-McFarland, a JV
Percent Complete	1%
Occupy On	August 2024

Scope of Work

Convert for Montessori PK-6 program.



Project Status

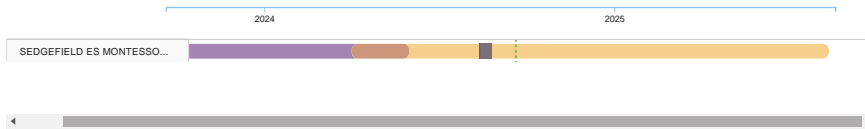
The Sedgefield Elementary School Montessori Upfit project continues to progress with building permit approval of Phase 2. Phase 2 includes the incorporation of life skills classrooms, security vestibule and minor upfits/renovations to the main building.



Schedule

TASK	DUR	% Complete	START	FINISH
Design & Permitting	261	88.52%	September 2023	June 2024
Bidding & Construction	499	6.61%	April 2024	August 2025
Ff&E / Occupancy	13	0.00%	August 2024	August 2024

● Design & Permitting ● Bidding & Construction ● FF&E / Occupancy





Project Information

Bond Program	2023 Bond
Facility Name	Marie G Davis Montessori Upfit (23)
Address	3351 Griffith Street Charlotte, NC 28203
Architect	MPS
Construction Manager	TBD - Hard Bid
Percent Complete	0%
Occupy On	August 2025

Scope of Work

Convert to 7-12 Montessori to replace use at J.T. Williams and expand program.



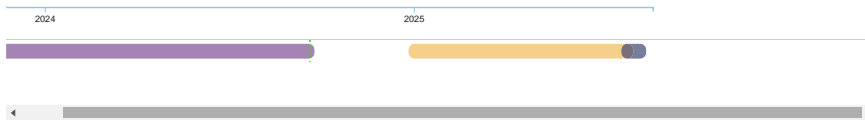
Project Status

The Marie G. Davis Montessori Upfit project design continues to progress in the construction document phase along with the building permit approval process. Once approved a follow-up meeting with CMS leadership and the project update meeting will be scheduled. The project scope includes miscellaneous renovations and converting the existing facility to a Montessori 6-12 facility including a security vestibule, makerspace, theatrical classroom, life skills classroom, exterior elements and up fitting primary classrooms to accommodate secondary school students.

Schedule

TASK	DUR	% Complete	START	FINISH
Design & Permitting	335	56.65%	November 2023	October 2024
Bidding & Construction	223	0.00%	January 2025	August 2025
Ff&E / Occupancy	25	0.00%	August 2025	August 2025

● Design & Permitting ● Bidding & Construction ● FF&E / Occupancy



Financial Summary

Financial Summary

Budget

Contracts

Expenditures

MWSBE

FACILITY	BUDGET	TOTAL COMMITTED	TO BE COMMITTED	PAID TO DATE	MWSBE %
Marie G Davis Montessori Upfit	\$9,174,783	\$945,626	\$8,259,154	\$347,795	21.09%



Project Information

Bond Program	2023 Bond
Facility Name	New Second Ward High School (23)
Address	TBD
Architect	LS3P Associates
Construction Manager	Rodgers Builders, Inc. in Association with Walter B. Davis Company
Percent Complete	0%
Occupy On	August 2028

Scope of Work

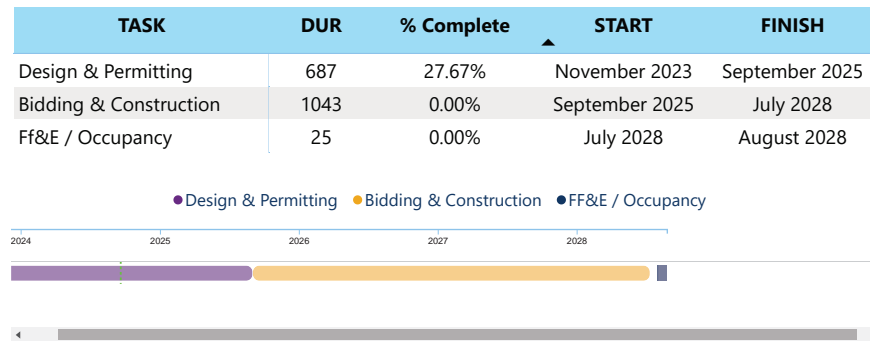
Full magnet high school on old Metro site; relocate program from Hawthorne site.



Project Status

The new Second Ward High School project schematic design submission was received and is currently under review. The construction manager has received bids for the demolition of the old Metro School on the site of the new building and is evaluating these bids in preparation for Board approval in September.

Schedule



Financial Summary

Financial Summary

Budget

Contracts

Expenditures

MWSBE

FACILITY	BUDGET	TOTAL COMMITTED	TO BE COMMITTED	PAID TO DATE	MWSBE %
New Second Ward High School	\$176,810,460	\$14,975,717	\$161,834,743	\$1,152,668	11.22%



Project Information

Bond Program	2023 Bond
Facility Name	New Middle School 1 South (23)
Address	5400 Campe Verde Lane Charlotte, NC 28277
Architect	Hord Coplan Macht, Inc.
Construction Manager	Messer Construction Company
Percent Complete	0%
Occupy On	August 2026

Scope of Work

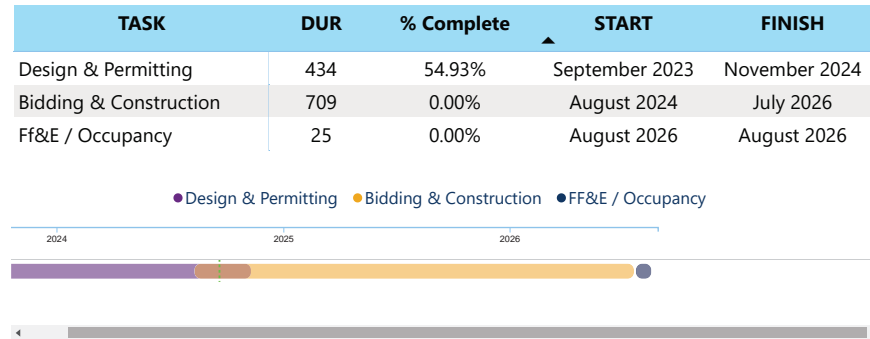
Baseline 54-classroom Middle School facility to relieve Community House MS, Jay M. Robinson MS and Rea Farms STEAM K-8.



Project Status

The new Middle School #1 South project team continues to track LUESA, City Engineering and Land Development document submissions for building permit approval. Discussions with Charlotte Department of Transportation, Charlotte Water, and utility service providers continue to develop regarding the new portion of Golf Links Road. The construction manager has received early bids for electrical equipment; and the remaining bids are due in September. The project consists of a new middle school facility with the accompanying exterior improvements.

Schedule



Financial Summary

Financial Summary

Budget

Contracts

Expenditures

MWSBE

FACILITY	BUDGET	TOTAL COMMITTED	TO BE COMMITTED	PAID TO DATE	MWSBE %
New Middle School #1 South	\$101,089,262	\$7,920,055	\$93,169,207	\$1,925,305	5.34%



Project Information

Bond Program	2023 Bond
Facility Name	North Mecklenburg High School Replacement (23)
Address	Old Statesville Road Huntersville, NC 28078
Architect	ADW Architects
Construction Manager	New Atlantic Contracting, Inc.
Percent Complete	0%
Occupy On	August 2028

Scope of Work

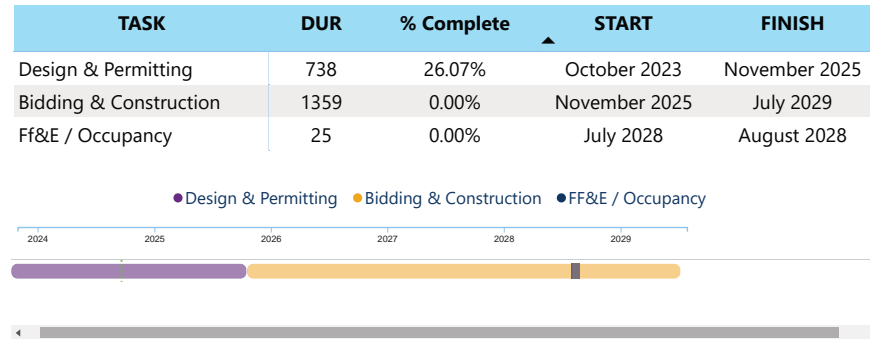
Onsite replacement of balance of campus and comprehensive athletics package.



Project Status

The North Mecklenburg High School Replacement project continues to progress in the design development phase. As the design progresses, the construction manager continues to update logistical plans to safely execute the complex construction surrounding this project. The project provides a full replacement of the comprehensive high school.

Schedule



Financial Summary

Financial Summary

Budget

Contracts

Expenditures

MWSBE

FACILITY	BUDGET	TOTAL COMMITTED	TO BE COMMITTED	PAID TO DATE	MWSBE %
North Mecklenburg High School Replacement	\$228,464,171	\$18,034,428	\$210,429,743	\$1,938,614	6.92%



Project Information

Bond Program	2023 Bond
Facility Name	Park Road Elementary School (23)
Address	3701 Haven Drive Charlotte, NC 28209
Architect	Ratio
Construction Manager	Vannoy-McFarland, a JV
Percent Complete	1%
Occupy On	August 2026

Scope of Work

Replace with 45-classroom school for Dilworth paired schools.

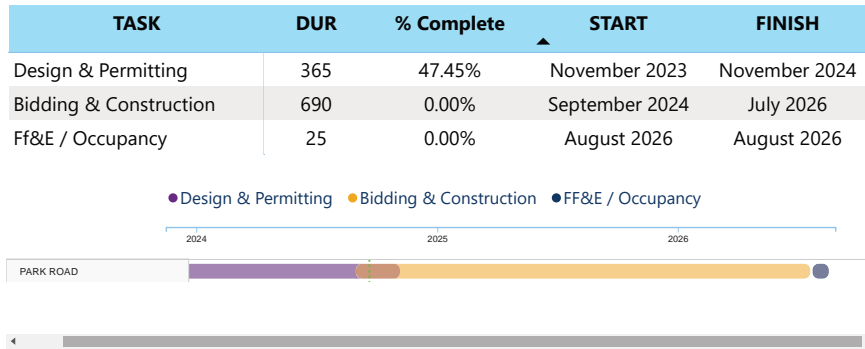


Project Status

The New Park Road Elementary School design development review is complete and comments have been returned to the architect for incorporation. CMS leadership completed their review of design development documents. The construction manager is developing prequalification documents and scheduling activities as required. Demolition of the existing school is scheduled in the fall of 2024 followed by civil construction of the site and then the new school construction. The project consists of a new elementary school.



Schedule





Project Information

Bond Program	2023 Bond
Facility Name	Dilworth Latta (23)
Address	405 East Park Avenue Charlotte, NC 28203
Architect	
Construction Manager	
Percent Complete	1%
Occupy On	August 2027

Scope of Work

Repurpose Dilworth for a TBD middle school magnet.



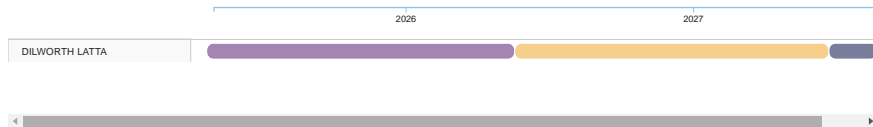
Project Status

The Dilworth Latta project is scheduled to start design in third quarter of 2025. Minor up-fit construction work is underway to accommodate two additional classrooms for occupancy in August 2024.

Schedule

TASK	DUR	% Complete	START	FINISH
Design & Permitting	390	0.00%	May 2025	May 2026
Bidding & Construction	398	0.00%	May 2026	June 2027
Ff&E / Occupancy	60	0.00%	July 2027	August 2027

● Design & Permitting ● Bidding & Construction ● FF&E / Occupancy





Financial Summary

Financial Summary

Budget

Contracts

Expenditures

MWSBE

FACILITY ▲	BUDGET	TOTAL COMMITTED	TO BE COMMITTED	PAID TO DATE	MWSBE %
Park Road ES/Dilworth Latta/Sedgefield	\$89,491,970	\$10,932,364	\$78,588,461	\$2,401,048	24.08%



Project Information

Bond Program	2023 Bond
Facility Name	South Mecklenburg High School Replacement (23)
Address	8900 Park Road Charlotte, NC 28210
Architect	Morris Berg Architects
Construction Manager	Whiting-Turner Contracting Company
Percent Complete	0%
Occupy On	August 2027

Scope of Work

Final phases of work, to include onsite replacement of balance of campus to +/- 100 classroom baseline, comprehensive athletics package.

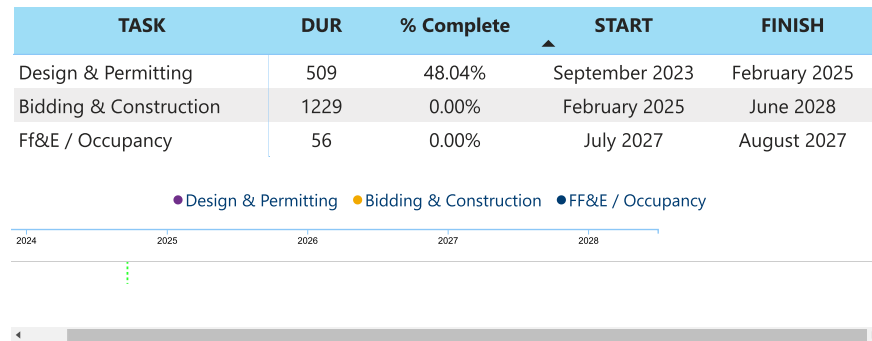


Project Status

The South Mecklenburg High School Replacement project continues to progress in the design development phase. The construction manager has developed logistic plans that safely execute construction work phases on an occupied school campus. Focus meetings continue with CMS leadership to obtain academic and operational information that improves the outcome of the design effort. The project consists of a partial campus replacement and significant improvements to the football stadium and athletic fields.



Schedule



Financial Summary

Financial Summary

Budget

Contracts

Expenditures

MWSBE

FACILITY	BUDGET	TOTAL COMMITTED	TO BE COMMITTED	PAID TO DATE	MWSBE %
South Mecklenburg High School Replacement	\$127,909,253	\$11,197,453	\$116,711,800	\$2,435,693	9.34%



Project Information

Bond Program	2023 Bond
Facility Name	Beverly Woods Elementary School (23)
Address	6001 Quail Hollow Road Charlotte, NC 28210
Architect	
Construction Manager	
Percent Complete	0%
Occupy On	August 2028

Scope of Work

Onsite replacement with 45-classroom baseline school.

Project Status

Due diligence activities are underway. Request for Qualifications for Architects and Construction Managers will be advertised Fall 2024.



Schedule

TASK	DUR	% Complete	START	FINISH
Design & Permitting	454	0.00%	April 2025	June 2026
Bidding & Construction	695	0.00%	July 2026	May 2028
Ff&E / Occupancy	84	0.00%	June 2028	August 2028

● Design & Permitting
 ● Bidding & Construction
 ● FF&E / Occupancy

Financial Summary

Financial Summary

Budget

Contracts

Expenditures

MWSBE

FACILITY	BUDGET	TOTAL COMMITTED	TO BE COMMITTED	PAID TO DATE	MWSBE %
Beverly Woods Elementary School	\$71,237,699	\$2,651,226	\$68,586,473	\$0	



Project Information

Bond Program	2023 Bond
Facility Name	Huntersville Elementary School (23)
Address	200 Gilead Road Huntersville, NC 28078
Architect	
Construction Manager	
Percent Complete	0%
Occupy On	August 2028

Scope of Work

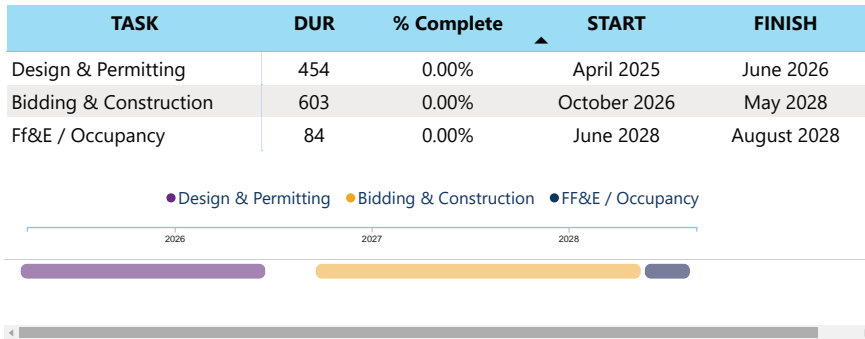
Onsite replacement with 45-classroom baseline facility.

Project Status

Due diligence activities are underway. Request for Qualifications for Architects and Construction Managers will be advertised Fall 2024.



Schedule



Financial Summary

Financial Summary

- Budget
- Contracts
- Expenditures
- MWSBE

FACILITY	BUDGET	TOTAL COMMITTED	TO BE COMMITTED	PAID TO DATE	MWSBE %
Huntersville Elementary School	\$66,235,904	\$0	\$66,235,904	\$0	



Project Information

Bond Program	2023 Bond
Facility Name	New Middle School 2 North (23)
Address	TBD
Architect	
Construction Manager	
Percent Complete	0%
Occupy On	August 2028

Scope of Work

Baseline 54-classroom facility at Stumptown Road to relieve Bailey Road MS, Davidson K-8, and J.M. Alexander MS.

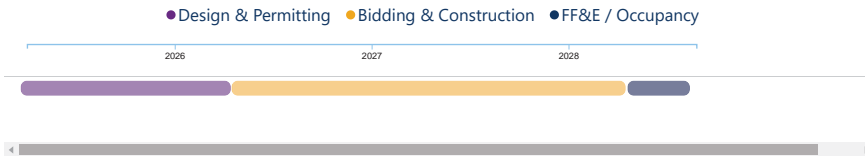
Project Status

Due diligence activities are underway. Request for Qualifications for Architects and Construction Managers will be advertised Fall 2024.



Schedule

TASK	DUR	% Complete	START	FINISH
Design & Permitting	390	0.00%	April 2025	April 2026
Bidding & Construction	731	0.00%	April 2026	April 2028
Ff&E / Occupancy	116	0.00%	May 2028	August 2028



Financial Summary

Financial Summary

- Budget
- Contracts
- Expenditures
- MWSBE

FACILITY	BUDGET	TOTAL COMMITTED	TO BE COMMITTED	PAID TO DATE	MWSBE %
New Middle School #2 North	\$92,371,482	\$3,425,964	\$88,945,518	\$0	



Project Information

Bond Program	2023 Bond
Facility Name	Berryhill School (23)
Address	TBD
Architect	
Construction Manager	
Percent Complete	0%
Occupy On	August 2028

Scope of Work

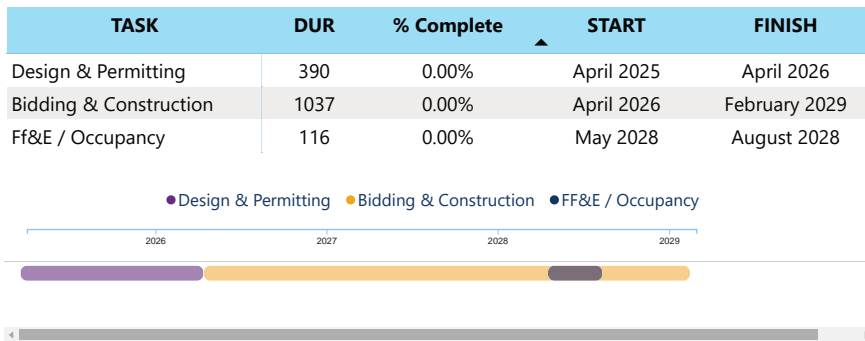
Offsite replacement and demolish existing building.

Project Status

Due diligence activities are underway. Request for Qualifications for Architects and Construction Managers will be advertised Fall 2024.



Schedule



Financial Summary

Financial Summary

Budget

Contracts

Expenditures

MWSBE

FACILITY	BUDGET	TOTAL COMMITTED	TO BE COMMITTED	PAID TO DATE	MWSBE %
Berryhill School	\$104,286,451	\$3,806,455	\$100,479,996	\$0	

PROCUREMENT

**UPCOMING MAJOR CONSTRUCTION
PROCUREMENT DATES**
Three-Month Look Ahead

School Name

Bid Period*

New Middle School #1 South
Managed by CM (Messer Construction)

September 18 & 19, 2024

Park Road GMP #1A
Managed by CM (Vannoy/McFarland JV)

September 13, 2024

Sedgefield Montessori School Phase 2
Managed by CM (Vannoy/McFarland JV)

October 4, 2024

** NOTE: Work In Progress...Dates Subject to Change.*

MWSBE

MWSBE

The Diversity & Inclusion Office of Charlotte-Mecklenburg Schools continued to conduct several individual virtual orientations with new MWSBE contractors and prime contractors. Contractors are also encouraged to review bid advertisements in Charlotte Observer and register as a vendor on the North Carolina electronic Vendor Portal (eVP) for notification of the various opportunities.

Team members also attended/hosted the following outreach sessions/pre-bid meetings and/or workforce development opportunities:

- Second Ward Demolition Bid Opening
- New Middle School Electrical Supplies – Bid Opening
- CMS Workforce Development Quarterly Update Meeting
- Mayor’s Youth Employment Program (MYEP) Celebration
- HCAC Brilliance Awards Gala
- Construction Business Academy Graduation
- CVMSDC Business Opportunity Conference

Upcoming Workforce Development Events

Goodwill Construction Hiring Event

September 17, 2024

6:00 pm - 8:00pm

Goodwill Construction Skills Training Center – 1335 Alleghany Street, Charlotte, NC 28208

Space is Limited - RSVP by August 26th to Matthew.Robson@goodwillsp.org

Skilled Trades Open House

October 16, 2024 (10:00 am – 2:00 pm) and (4:00 - 7:30 pm)

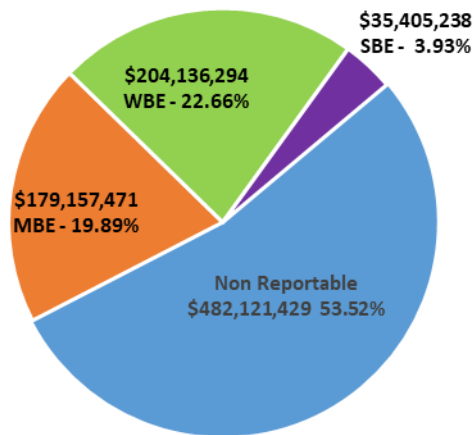
The Event will be at CPCC Harper Campus 315 West Hebron

Point of Contact: Brian Lucas, Associate Dean of Skilled Trades

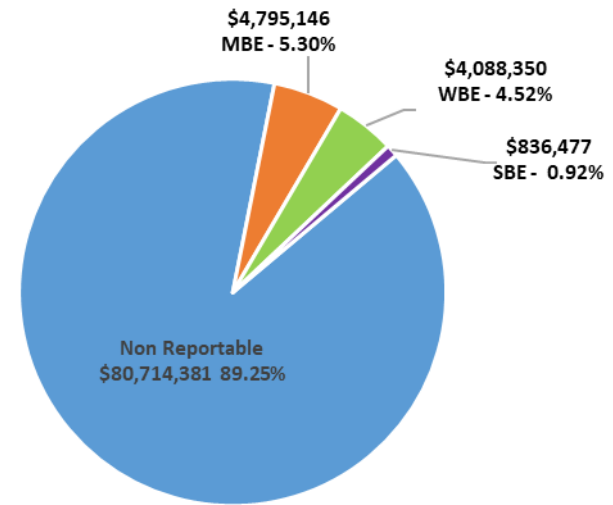
Phone: 704-330-4424 or 704-965—8170

Email: Brian.Lucas@cpcc.edu

The MWSBE utilization related to design and construction of the **2017** bond projects is **46.48%** of which includes 19.89% (\$179,136,294) participation by minority contractors, 22.66% (\$204,136,294) by women contractors and 3.93% (\$35,405,238) participation by small business contractors. This accounts for more than \$418 million of utilization by Minority, Women and Small Business Contractors.



The MWSBE utilization related to design and construction of the **2023** bond projects is **10.75%** of which includes 5.30% (\$4,795,146) participation by minority contractors, 4.52% (\$4,088,350) by women contractors and 0.92% (\$836,477) participation by small business contractors. This accounts for more than \$9 million of utilization by Minority, Women and Small Business Contractors.



MWSBE Participation Commitments - Design and Construction

Charlotte-Mecklenburg Schools

2017 Bond

August 2024 Monthly Bond Report

Facility	Contract Amount	African American MBE\$	%	Other MBE \$	%	Total MBE \$	%	Other WBE \$	%	Other SBE \$	%	Total	%
<u>Ballantyne Ridge High School (17)</u>	\$134,405,715	\$3,179,188	2.37%	\$5,932,686	4.41%	\$9,111,874	6.78%	\$7,189,547	5.35%	\$9,403,522	7.00%	\$25,704,943	19.12%
<u>Briarwood Elementary School (17)</u>	\$28,327,548	\$4,038,457	14.26%	\$2,135,619	7.54%	\$6,174,076	21.80%	\$2,187,249	7.72%	\$187,102	0.66%	\$8,548,427	30.18%
<u>Bruns Avenue Elementary School (17)</u>	\$44,594,928	\$3,967,408	8.90%	\$3,759,285	8.43%	\$7,726,693	17.33%	\$4,878,447	10.94%	\$2,312,654	5.19%	\$14,917,794	33.45%
<u>Career and Technology Education (17)</u>	\$6,832,606	\$525,995	7.70%	\$332,511	4.87%	\$858,506	12.56%	\$221,655	3.24%	\$65,475	0.96%	\$1,145,636	16.77%
<u>Charlotte-Mecklenburg Academy (17)</u>	\$16,883,930	\$198,536	1.18%	\$1,031,692	6.11%	\$1,230,228	7.29%	\$928,655	5.50%	\$13,200	0.08%	\$2,172,083	12.86%
<u>Collinswood Language Academy (17)</u>	\$38,527,704	\$650,587	1.69%	\$1,613,104	4.19%	\$2,263,691	5.88%	\$11,363,565	29.49%	\$8,328	0.02%	\$13,635,584	35.39%
<u>E.E. Waddell (17)</u>	\$2,157,197	\$53,893	2.50%	\$0	0.00%	\$53,893	2.50%	\$69,124	3.20%	\$0	0.00%	\$123,017	5.70%
<u>East Mecklenburg High School (17)</u>	\$12,642,198	\$603,811	4.78%	\$532,460	4.21%	\$1,136,271	8.99%	\$490,364	3.88%	\$681,075	5.39%	\$2,307,710	18.25%
<u>Esperanza Global Academy (17)</u>	\$39,393,081	\$9,397,026	23.85%	\$3,700,782	9.39%	\$13,097,808	33.25%	\$24,734,811	62.79%	\$1,513,957	3.84%	\$39,346,575	99.88%
<u>Garinger High School (17)</u>	\$3,114,094	\$110,106	3.54%	\$363,897	11.69%	\$474,003	15.22%	\$498,134	16.00%	\$251,932	8.09%	\$1,224,069	39.31%
<u>Grove Park Elementary School (17)</u>	\$38,471,424	\$5,299,456	13.78%	\$3,772,013	9.80%	\$9,071,469	23.58%	\$2,580,361	6.71%	\$49,132	0.13%	\$11,700,962	30.41%
<u>Harding High School (17)</u>	\$13,015,986	\$1,504,505	11.56%	\$309,667	2.38%	\$1,814,172	13.94%	\$4,050,417	31.12%	\$36,861	0.28%	\$5,901,449	45.34%
<u>JT Williams (17)</u>	\$15,293,165	\$740,160	4.84%	\$379,844	2.48%	\$1,120,004	7.32%	\$3,832,205	25.06%	\$51,800	0.34%	\$5,004,009	32.72%
<u>Knights View Elementary School (17)</u>	\$45,420,860	\$5,880,253	12.95%	\$1,770,289	3.90%	\$7,650,542	16.84%	\$10,854,671	23.90%	\$2,563,223	5.64%	\$21,068,436	46.38%
<u>Lansdowne Elementary School (17)</u>	\$30,688,137	\$2,890,574	9.42%	\$882,139	2.87%	\$3,772,713	12.29%	\$2,490,921	8.12%	\$1,973,431	6.43%	\$8,237,065	26.84%
<u>Lincoln Heights Elementary School (17)</u>	\$2,844,363	\$318,959	11.21%	\$18,800	0.66%	\$337,759	11.87%	\$64,894	2.28%	\$73,077	2.57%	\$475,730	16.73%
<u>Mint Hill Elementary School (17)</u>	\$25,946,007	\$5,223,675	20.13%	\$17,791,909	68.57%	\$23,015,584	88.71%	\$1,192,408	4.60%	\$308,370	1.19%	\$24,516,362	94.49%
<u>Montclair Elementary School (17)</u>	\$26,093,784	\$3,593,852	13.77%	\$2,341,048	8.97%	\$5,934,900	22.74%	\$5,775,745	22.13%	\$493,707	1.89%	\$12,204,352	46.77%
<u>Mountain Island Lake Academy (17)</u>	\$11,714,739	\$153,353	1.31%	\$750,124	6.40%	\$903,478	7.71%	\$927,916	7.92%	\$15,300	0.13%	\$1,846,694	15.76%
<u>North Academy of World Languages (17)</u>	\$38,354,285	\$1,770,068	4.62%	\$1,575,864	4.11%	\$3,345,931	8.72%	\$4,231,632	11.03%	\$436,793	1.14%	\$8,014,357	20.90%
<u>Northwest School of the Arts (17)</u>	\$9,087,530	\$1,287,042	14.16%	\$309,525	3.41%	\$1,596,567	17.57%	\$2,684,844	29.54%	\$0	0.00%	\$4,281,411	47.11%
<u>Palisades High School (17)</u>	\$97,241,537	\$13,482,757	13.87%	\$7,641,104	7.86%	\$21,123,862	21.72%	\$8,317,153	8.55%	\$7,698,589	7.92%	\$37,139,603	38.19%
<u>Shamrock Gardens Elementary School (17)</u>	\$27,133,018	\$2,478,054	9.13%	\$1,636,383	6.03%	\$4,114,438	15.16%	\$21,128,435	77.87%	\$259,554	0.96%	\$25,502,427	93.99%
<u>Sharon Elementary School (17)</u>	\$8,534,491	\$438,383	5.14%	\$283,497	3.32%	\$721,880	8.46%	\$926,873	10.86%	\$106,444	1.25%	\$1,755,197	20.57%

Facility	Contract Amount	African American MBE\$	%	Other MBE \$	%	Total MBE \$	%	Other WBE \$	%	Other SBE \$	%	Total	%
<u>South Academy of International Langu</u>	\$37,153,679	\$6,023,142	16.21%	\$2,431,071	6.54%	\$8,454,213	22.75%	\$10,945,346	29.46%	\$313,999	0.85%	\$19,713,558	53.06%
<u>South Mecklenburg High School (17)</u>	\$15,536,674	\$2,252,188	14.50%	\$1,290,610	8.31%	\$3,542,798	22.80%	\$319,542	2.06%	\$82,420	0.53%	\$3,944,760	25.39%
<u>South Pine Academy (17)</u>	\$26,196,854	\$916,165	3.50%	\$19,052,520	72.73%	\$19,968,685	76.23%	\$4,342,256	16.58%	\$237,754	0.91%	\$24,548,695	93.71%
<u>West Charlotte High School (17)</u>	\$95,404,334	\$14,488,288	15.19%	\$5,259,935	5.51%	\$19,748,223	20.70%	\$65,654,118	68.82%	\$5,213,393	5.46%	\$90,615,733	94.98%
<u>West Mecklenburg High School (17)</u>	\$9,810,566	\$283,809	2.89%	\$509,403	5.19%	\$793,212	8.09%	\$1,255,006	12.79%	\$1,054,146	10.75%	\$3,102,365	31.62%
Grandtotal	\$900,820,432	\$91,749,688	10.19%	\$87,407,783	9.70%	\$179,157,471	19.89%	\$204,136,294	22.66%	\$35,405,238	3.93%	\$418,699,003	46.48%

MWSBE Participation Commitments - Design and Construction

Charlotte-Mecklenburg Schools

2023 Bond

August 2024 Monthly Bond Report

Facility	Contract Amount	African American MBE\$	%	Other MBE \$	%	Total MBE \$	%	Other WBE \$	%	Other SBE \$	%	Total	%
<u>Cotswold ES/Billingsville (23)</u>	\$3,432,675	\$46,700	1.36%	\$72,200	2.10%	\$118,900	3.46%	\$106,630	3.11%	\$12,700	0.37%	\$238,230	6.94%
<u>Marie G Davis Montessori Upfit (23)</u>	\$599,663	\$0	0.00%	\$15,000	2.50%	\$15,000	2.50%	\$111,445	18.58%	\$0	0.00%	\$126,445	21.09%
<u>New Middle School 1 South (23)</u>	\$4,225,375	\$17,000	0.40%	\$106,000	2.51%	\$123,000	2.91%	\$102,470	2.43%	\$0	0.00%	\$225,470	5.34%
<u>New Second Ward High School (23)</u>	\$7,822,085	\$0	0.00%	\$113,940	1.46%	\$113,940	1.46%	\$113,915	1.46%	\$650,000	8.31%	\$877,855	11.22%
<u>North Mecklenburg High School Repla</u>	\$9,655,419	\$0	0.00%	\$575,100	5.96%	\$575,100	5.96%	\$52,891	0.55%	\$40,000	0.41%	\$667,991	6.92%
<u>Northwest School of the Arts/First Wa</u>	\$51,224,887	\$1,077,042	2.10%	\$1,501,165	2.93%	\$2,578,207	5.03%	\$2,669,609	5.21%	\$83,077	0.16%	\$5,330,893	10.41%
<u>Park Road ES/Dilworth Latta/Sedgefie</u>	\$6,744,281	\$890,506	13.20%	\$236,244	3.50%	\$1,126,749	16.71%	\$484,855	7.19%	\$12,700	0.19%	\$1,624,304	24.08%
<u>South Mecklenburg High School Repla</u>	\$6,729,969	\$49,250	0.73%	\$95,000	1.41%	\$144,250	2.14%	\$446,535	6.64%	\$38,000	0.56%	\$628,785	9.34%
Grandtotal	\$90,434,354	\$2,080,498	2.30%	\$2,714,649	3.00%	\$4,795,146	5.30%	\$4,088,350	4.52%	\$836,477	0.92%	\$9,719,973	10.75%

FINANCIALS

FINANCIALS

Bond Progress Summary

Funding Source and Value		Amount Committed/Pending	Amount Paid to Date	Amount Expended This Period
2017 Bond	\$1,005,473,960	\$977,569,593	\$932,748,993	\$9,315,598
2023 Bond	\$2,500,000,000	\$135,333,405	\$16,994,115	\$4,809,919
Grand Total	\$3,505,473,959	\$1,112,902,998	\$949,743,108	\$14,125,517

Approved Construction or Repair Change Orders*

Funding Source	Project Name	Contractor	Description	Change Order Amount	Revised Contract Value
2017 Bond	West Charlotte High School (17)	RODGERS-HOLT BROTHERS, a Joint Venture	Generator regulator and hose connections, Concrete Infill at Brick Pavers, Provide additional Long/Triple Jump at existing Track & Field, Pool Equipment Modifications, Replace Door Hardware at Pool Chemical Storage Room, Replace Eyewash Station at Pool Chemical Storage Room, Lawnmower Purchase and Reimbursement for Utilities	\$45,703.74	\$88,963,167.45

* Not previously presented to the Board of Education for Approval (less than \$90,000)

**CHARLOTTE-MECKLENBURG BOARD OF EDUCATION
2017 BOND SERIES-CAPITAL IMPROVEMENT PROGRAMS
BUDGET STATUS REPORT**

	Original Project Budget	Current Project Budget	Committed Amount	Approved Change Orders	Total Committed	Pending Commitments	To Be Committed	Prev Paid To Date	Paid To Date	Balance To Complete	Monthly Expenditure
	(A)	(B)	(C)	(D)	(E)=(C+D)	(F)	(G)=(B-E-F)	(H)	(I)	(J)=(B-I)	(K)=(I-H)
<u>A. REPLACEMENT & RENOVATIONS</u>											
1 Briarwood Elementary *	\$29,091,619	\$31,136,111	\$4,730,737	\$26,405,374	\$31,136,111	\$0	\$0	\$31,136,111	\$31,136,111	\$0	\$0
2 Bruns Academy Replacement	\$34,207,808	\$48,859,580	\$3,902,960	\$42,528,598	\$46,431,557	\$50,290	\$2,377,733	\$33,443,415	\$35,656,936	\$13,202,645	\$2,213,521
3 Career & Technology Education Upgrades	\$10,101,734	\$6,984,007	\$3,665,419	\$3,318,588	\$6,984,007	\$0	\$0	\$6,984,007	\$6,984,007	\$0	\$0
4 Collinswood K-8 *	\$44,172,540	\$41,401,384	\$4,916,632	\$36,484,752	\$41,401,384	\$0	\$0	\$41,401,384	\$41,401,384	\$0	\$0
5 East Mecklenburg HS	\$12,771,594	\$10,141,268	(\$1,659,510)	\$11,800,778	\$10,141,268	\$0	\$0	\$10,141,268	\$10,141,268	\$0	\$0
6 Garinger HS	\$13,936,979	\$4,204,948	\$690,888	\$3,259,238	\$3,950,126	\$0	\$254,822	\$3,946,199	\$3,946,199	\$258,749	\$0
7 Harding University High *	\$18,330,263	\$13,747,878	\$2,045,267	\$11,702,610	\$13,747,877	\$0	\$0	\$13,747,877	\$13,747,877	\$0	\$0
8 Charlotte-Mecklenburg Academy (FKA -EC Specialty	\$18,957,960	\$17,699,220	\$2,175,504	\$15,523,717	\$17,699,220	\$0	\$0	\$17,699,220	\$17,699,220	\$0	\$0
9 Lansdowne Elementary	\$29,391,270	\$33,554,188	\$3,926,495	\$29,426,290	\$33,352,785	\$0	\$201,403	\$32,674,813	\$32,674,813	\$879,375	\$0
10 Lincoln Heights Elementary	\$3,740,478	\$4,333,830	\$2,876,849	\$802,239	\$3,679,087	\$0	\$654,743	\$3,284,682	\$3,304,562	\$1,029,268	\$19,880
11 Montclair Elementary Replacement *	\$28,559,390	\$28,200,634	\$2,426,761	\$25,773,873	\$28,200,634	\$0	\$0	\$28,200,634	\$28,200,634	\$0	\$0
12 Mountain Island k-8	\$9,218,439	\$13,239,686	\$1,658,934	\$10,899,213	\$12,558,147	\$2,000	\$679,539	\$12,457,598	\$12,485,748	\$753,939	\$28,150
13 Northwest School of the Arts	\$17,632,202	\$11,417,000	\$5,229,666	\$4,781,224	\$10,010,890	\$2,000	\$1,404,110	\$7,917,795	\$7,940,027	\$3,476,973	\$22,232
14 Shamrock Gardens Elementary *	\$29,890,351	\$29,757,027	\$3,422,159	\$26,334,868	\$29,757,027	\$0	\$0	\$29,757,027	\$29,757,027	\$0	\$0
15 Sharon Elementary	\$7,706,528	\$9,088,894	\$1,430,033	\$7,658,861	\$9,088,894	\$0	\$0	\$9,088,894	\$9,088,894	\$0	\$0
16 South Mecklenburg HS	\$13,352,143	\$17,322,927	\$1,951,909	\$14,172,707	\$16,124,616	\$37,407	\$1,160,904	\$9,626,835	\$10,907,430	\$6,415,497	\$1,280,595
17 E.E. Waddell Magnet HS	\$4,571,709	\$3,770,925	\$2,949,431	\$123,480	\$3,072,911	\$0	\$698,014	\$3,065,863	\$3,065,863	\$705,062	\$0
18 West Charlotte HS Replacement	\$109,977,166	\$103,466,299	\$11,723,563	\$91,687,271	\$103,410,834	\$8,250	\$47,215	\$102,702,343	\$102,788,381	\$677,919	\$86,037
19 West Mecklenburg HS	\$11,065,440	\$6,260,654	(\$2,370,464)	\$8,631,118	\$6,260,654	\$0	\$0	\$6,260,654	\$6,260,654	\$0	\$0
20 John Taylor Williams	\$13,964,339	\$16,058,504	\$3,565,114	\$12,267,108	\$15,832,222	\$0	\$226,282	\$15,828,031	\$15,828,031	\$230,473	\$0
Total Replacement & Renovations	\$460,639,952	\$450,644,964	\$59,258,346	\$383,581,907	\$442,840,252	\$99,946	\$7,704,765	\$419,364,650	\$423,015,066	\$27,629,899	\$3,650,416
<u>B. RESPONSE TO ENROLLMENT GROWTH</u>											
1 South Academy of International Languages	\$45,359,367	\$40,603,148	\$5,969,503	\$34,633,646	\$40,603,148	\$0	\$0	\$40,603,252	\$40,603,252	\$0	\$0
2 North Academy of World Languages (FKA - New K-8	\$45,359,367	\$41,742,062	\$6,024,166	\$35,717,896	\$41,742,062	\$0	\$0	\$41,742,062	\$41,742,062	\$0	\$0
3 South Pine Academy (FKA - New ES Nations Ford,	\$29,173,829	\$30,477,421	\$6,883,836	\$23,593,585	\$30,477,421	\$0	\$0	\$30,477,421	\$30,477,421	\$0	\$0
4 Mint Hill Elementary School	\$29,988,332	\$29,026,764	\$3,296,439	\$25,730,325	\$29,026,764	\$0	\$0	\$29,026,764	\$29,026,764	\$0	\$0
5 Esperanza Global Academy (FKA New ES - Windsor	\$30,422,230	\$45,297,022	\$13,327,349	\$31,530,754	\$44,858,103	\$1,200	\$437,719	\$43,962,263	\$44,131,913	\$1,165,109	\$169,649
6 Knights View Elementary School - Elon/Hawk Ridge	\$30,426,712	\$59,997,684	\$9,546,892	\$43,655,239	\$53,202,131	\$0	\$6,795,553	\$48,761,207	\$49,095,202	\$10,902,481	\$333,995
7 Grove Park Elementary (FKA New ES - Hidden Valle	\$30,518,345	\$42,890,747	\$6,316,206	\$36,115,060	\$42,431,266	\$2,000	\$457,481	\$41,649,792	\$41,849,639	\$1,041,108	\$199,847
8 Palisades High School	\$109,908,793	\$106,172,644	\$10,856,374	\$95,084,185	\$105,940,559	\$20,042	\$212,043	\$105,868,462	\$105,868,462	\$304,182	\$0
9 Ballantyne Ridge High School	\$110,287,621	\$158,621,503	\$14,441,151	\$131,731,619	\$146,172,770	\$151,927	\$12,296,805	\$121,977,521	\$126,939,211	\$31,682,291	\$4,961,691
Total Response to Enrollment Growth	\$461,444,596	\$554,828,995	\$76,661,915	\$457,792,309	\$534,454,224	\$175,170	\$20,199,601	\$504,068,745	\$509,733,927	\$45,095,068	\$5,665,183
<u>C. CONTINGENCY</u>											
	\$0	\$0	\$0	\$0	\$0	\$0	\$0	\$0	\$0	\$0	\$0
Total Contingency	\$0	\$0	\$0	\$0	\$0	\$0	\$0	\$0	\$0	\$0	\$0

**CHARLOTTE-MECKLENBURG BOARD OF EDUCATION
2017 BOND SERIES-CAPITAL IMPROVEMENT PROGRAMS
BUDGET STATUS REPORT**

	Original Project Budget	Current Project Budget	Committed Amount	Approved Change Orders	Total Committed	Pending Commitments	To Be Committed	Prev Paid To Date	Paid To Date	Balance To Complete	Monthly Expenditure
	(A)	(B)	(C)	(D)	(E)=C+D	(F)	(G)=(B-E-F)	(H)	(I)	(J)=(B-I)	(K)=(I-H)
TOTAL LOCAL BOND PROGRAM	\$922,084,548	\$1,005,473,960	\$135,920,261	\$841,374,216	\$977,294,477	\$275,116	\$27,904,366	\$923,433,395	\$932,748,993	\$72,724,966	\$9,315,598

Original project estimated costs approved by the Board Of Education on July 25, 2017 approved by the voters of Mecklenburg County on November 7, 2017.

*Project included in \$33.2M early funding approved by Board Of Education on August 9, 2016 and Mecklenburg Board of County Commissioners on September 6, 2016. On February 19, 2019 an additional \$8M was approved for New Elementary School - Elon/Hawk Ridge Relief site.

*Current Budget includes an additional \$89.2M to fund increase land and construction costs. The additional funds were approved by the Board of County Commissioners on June 16, 2020.

The New Elementary School - Elon/Hawk Ridge Relief current Budget includes 6.8M for Park and Recreation Project.

Bruns Academy Replacement current budget includes \$1.5M for Park and Recreation Project.

Current Program Budget reflects a reclass of \$7.4M in expenditures to 2007 Bond Program and \$14.4M in expenditures to 2013 Bond Program.

CHARLOTTE-MECKLENBURG BOARD OF EDUCATION
2023 BOND SERIES-CAPITAL IMPROVEMENT PROGRAMS
BUDGET STATUS REPORT

	Original Project Budget	Current Project Budget	Committed Amount	Approved Change Orders	Total Committed	Pending Commitments	To Be Committed	Prev Paid To Date	Paid To Date	Balance To Complete	Monthly Expenditure
	(A)	(B)	(C)	(D)	(E)=(C+D)	(F)	(G)=(B-E-F)	(H)	(I)	(J)=(B-I)	(K)=(I-H)
<u>A. REPLACEMENT & RENOVATIONS</u>											
1 Albemarle Road Middle School	\$97,732,036	\$97,732,036	\$0	\$0	\$0	\$0	\$97,732,036	\$0	\$0	\$97,732,036	\$0
2 Allenbrook Elementary School	\$74,244,220	\$74,244,220	\$0	\$0	\$0	\$0	\$74,244,220	\$0	\$0	\$74,244,220	\$0
3 Berryhill School	\$104,286,451	\$104,286,451	\$3,806,455	\$0	\$3,806,455	\$0	\$100,479,996	\$0	\$0	\$104,286,451	\$0
4 Beverly Woods Elementary School	\$71,237,699	\$71,237,699	\$2,651,226	\$0	\$2,651,226	\$0	\$68,586,473	\$0	\$0	\$71,237,699	\$0
5 Cochrane Collegiate Academy/iMeck	\$7,506,657	\$7,506,657	\$0	\$0	\$0	\$0	\$7,506,657	\$0	\$0	\$7,506,657	\$0
6 Cornelius Elementary School	\$76,471,997	\$76,471,997	\$0	\$0	\$0	\$0	\$76,471,997	\$0	\$0	\$76,471,997	\$0
7 Cotswold ES/Billingsville	\$80,555,856	\$80,555,856	\$6,769,784	(\$382,649)	\$6,387,134	\$0	\$74,168,722	\$642,675	\$784,181	\$79,771,675	\$141,506
8 Coulwood STEM Academy	\$92,706,982	\$92,706,982	\$0	\$0	\$0	\$0	\$92,706,982	\$0	\$0	\$92,706,982	\$0
9 E.E. Waddell High School	\$1,563,348	\$1,563,348	\$0	\$0	\$0	\$0	\$1,563,348	\$0	\$0	\$1,563,348	\$0
10 East Mecklenburg High School	\$201,339,353	\$201,339,353	\$0	\$0	\$0	\$0	\$201,339,353	\$0	\$0	\$201,339,353	\$0
11 Garinger High School	\$54,905,692	\$54,905,692	\$0	\$0	\$0	\$0	\$54,905,692	\$0	\$0	\$54,905,692	\$0
12 Harding University High School	\$202,879,499	\$202,879,499	\$0	\$0	\$0	\$0	\$202,879,499	\$0	\$0	\$202,879,499	\$0
13 Huntersville Elementary School	\$66,235,904	\$66,235,904	\$0	\$0	\$0	\$0	\$66,235,904	\$0	\$0	\$66,235,904	\$0
14 J.T. Williams	\$1,647,752	\$1,647,752	\$0	\$0	\$0	\$0	\$1,647,752	\$0	\$0	\$1,647,752	\$0
15 Marie G Davis Montessori Upfit	\$9,174,783	\$9,174,783	\$941,500	\$4,126	\$945,626	\$0	\$8,259,154	\$347,795	\$358,265	\$8,816,518	\$10,470
16 Matthews Elementary School	\$79,874,929	\$79,874,929	\$0	\$0	\$0	\$0	\$79,874,929	\$0	\$0	\$79,874,929	\$0
17 North Mecklenburg High School Replacement	\$228,464,171	\$228,464,171	\$19,176,788	(\$1,142,360)	\$18,034,428	\$0	\$210,429,743	\$1,938,614	\$3,090,307	\$225,373,864	\$1,151,693
18 Northwest School of the Arts/First Ward	\$93,654,147	\$93,654,147	\$5,525,951	\$49,243,472	\$54,769,423	\$4,500	\$38,880,224	\$1,340,397	\$2,294,668	\$91,359,479	\$954,271
19 Park Road ES/Dilworth Latta/Sedgefield	\$89,491,970	\$89,491,970	\$10,627,635	\$304,729	\$10,932,364	\$125,000	\$78,463,461	\$2,401,048	\$3,798,267	\$85,693,703	\$1,397,219
20 South Charlotte Middle School	\$7,741,099	\$7,741,099	\$0	\$0	\$0	\$0	\$7,741,099	\$0	\$0	\$7,741,099	\$0
21 South Mecklenburg High School Replacement	\$127,909,253	\$127,909,253	\$11,664,323	(\$466,869)	\$11,197,453	\$12,500	\$116,699,300	\$2,435,693	\$2,752,509	\$125,156,744	\$316,816
22 Steele Creek Elementary School	\$80,830,528	\$80,830,528	\$0	\$0	\$0	\$0	\$80,830,528	\$0	\$0	\$80,830,528	\$0
23 University Park Arts	\$73,119,088	\$73,119,088	\$0	\$0	\$0	\$0	\$73,119,088	\$0	\$0	\$73,119,088	\$0
24 Villa Heights @ Hawthorne	\$6,247,871	\$6,247,871	\$0	\$0	\$0	\$0	\$6,247,871	\$0	\$0	\$6,247,871	\$0
25 West Regional Athletic Complex	\$8,999,792	\$8,999,792	\$0	\$0	\$0	\$0	\$8,999,792	\$0	\$0	\$8,999,792	\$0
26 Wilson STEM Academy	\$92,471,565	\$92,471,565	\$0	\$0	\$0	\$0	\$92,471,565	\$0	\$0	\$92,471,565	\$0
Total Replacement & Renovations	\$2,031,292,642	\$2,031,292,642	\$61,163,660	\$47,560,449	\$108,724,109	\$142,000	\$1,922,485,384	\$9,106,223	\$13,078,196	\$2,018,214,446	\$3,971,973
<u>B. RESPONSE TO ENROLLMENT GROWTH</u>											
1 New Middle School #2 North	\$92,371,482	\$92,371,482	\$3,425,964	\$0	\$3,425,964	\$0	\$88,945,518	\$0	\$0	\$92,371,482	\$0
2 New Middle School #3 Southwest	\$98,436,153	\$98,436,153	\$0	\$0	\$0	\$0	\$98,436,153	\$0	\$0	\$98,436,153	\$0
3 New Second Ward High School	\$176,810,460	\$176,810,460	\$15,859,769	(\$884,052)	\$14,975,717	\$0	\$161,834,743	\$1,152,668	\$1,543,479	\$175,266,981	\$390,811
4 New Middle School #1 South	\$101,089,262	\$101,089,262	\$8,369,860	(\$449,805)	\$7,920,055	\$145,560	\$93,023,647	\$1,925,305	\$2,372,440	\$98,716,822	\$447,135
Total Response to Enrollment Growth	\$468,707,357	\$468,707,357	\$27,655,593	(\$1,333,857)	\$26,321,736	\$145,560	\$442,240,061	\$3,077,973	\$3,915,918	\$464,791,439	\$837,945
	\$2,499,999,999	\$2,499,999,999	\$88,819,254	\$46,226,592	\$135,045,845	\$287,560	\$2,364,725,445	\$12,184,196	\$16,994,115	\$2,483,005,884	\$4,809,919

Original Budget Projects were approved by the Board of County Commissioners on June 6, 2023 and by the voters of Mecklenburg County on November 7, 2023.

WEBSITE / SOCIAL MEDIA

BOND WEBSITE / SOCIAL MEDIA

Bond Construction Website

www.cmsbondconstruction.com

Linktree

<https://linktr.ee/cmsbondinfo>

Facebook

<https://www.facebook.com/cmsbond>

Twitter

<https://twitter.com/CMSbondinfo>

YouTube

<https://www.youtube.com/@cmsbondinfo>

Instagram

<https://www.instagram.com/cmsbondinfo>

For more information, email cmsbond@cms.k12.nc.us