

BUILDING FOR EXCELLENCE



July 2024

Bond Report



Northwest School of the Arts

CAPITAL PROGRAM SERVICES

Capital Improvement Program

JULY 2024
MONTHLY BOND REPORT

PROJECT SUMMARY SHEETS

PROCUREMENT

MWSBE

- 2017 MWSBE Participation Commitments
- 2023 MWSBE Participation Commitments

FINANCIALS

- Bond Progress Summary
- Change Orders < \$90,000
- Budget Status Reports
 - 2017 Bond Series
 - 2023 Bond Series

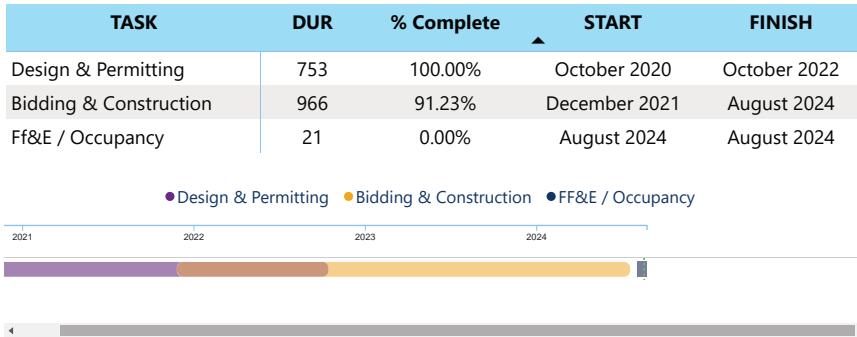
PROJECT SUMMARY SHEETS



Project Information

Bond Program	2017 Bond
Facility Name	Ballantyne Ridge High School (17)
Address	4004 Toringdon Way Charlotte, NC 28277
Architect	Ratio
Construction Manager	Messer
Percent Complete	96%
Occupy On	August 2024

Schedule



Scope of Work

New 100-classroom high school to relieve South Mecklenburg, Ardrey Kell and Myers Park HS.

Project Status

The New Ballantyne Ridge High School project team continued coordinating the numerous trades on site including site work, exterior façade, mechanical, electrical and plumbing (MEP). Startup and testing of the low voltage systems continue. Final cleaning is occurring throughout the building as well as final inspections from various inspectors and Fire Marshal. Landscapers continue to finalize the site along with site concrete. The traffic signal is progressing at Community House and Toringdon along with road modifications. FF&E has started installation.



Financial Summary

Financial Summary

Budget

Contracts

Expenditures

MWSBE

FACILITY	BUDGET	TOTAL COMMITTED	TO BE COMMITTED	PAID TO DATE	MWSBE %
Ballantyne Ridge High School	\$158,621,503	\$146,226,887	\$12,394,616	\$115,822,090	19.52%



Project Information

Bond Program	2017 Bond
Facility Name	South Mecklenburg High School (17)
Address	8900 Park Road Charlotte, NC 28210
Architect	Morris Berg
Construction Manager	Balfour Beatty
Percent Complete	68%
Occupancy On	January 2025

Scope of Work

Replace classroom building built in 1958 to upgrade learning conditions.

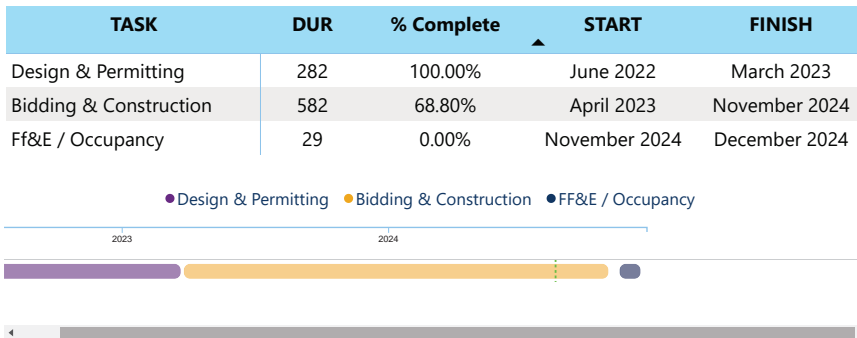


Project Status

The South Mecklenburg High School construction manager has completed the brick veneer and installation of windows. Drywall is complete and finish paint is progressing. Mechanical, electrical and plumbing trades are finishing over-head rough ins. The boiler room and air handling units are being finalized.



Schedule



Financial Summary

Financial Summary

Budget

Contracts

Expenditures

MWSBE

FACILITY	BUDGET	TOTAL COMMITTED	TO BE COMMITTED	PAID TO DATE	MWSBE %
South Mecklenburg HS	\$17,322,927	\$16,172,514	\$1,150,413	\$8,390,290	29.46%



Project Information

Bond Program	2017 Bond
Facility Name	Knights View Elementary School (17)
Address	11000 Beau Riley Road Charlotte, NC 28277
Architect	Little Diversified Architects
Construction Manager	Balfour Beatty
Percent Complete	99%
Occupancy On	August 2024

Scope of Work

New 45-classroom elementary school to relieve Elon, Hawk Ridge, Polo.

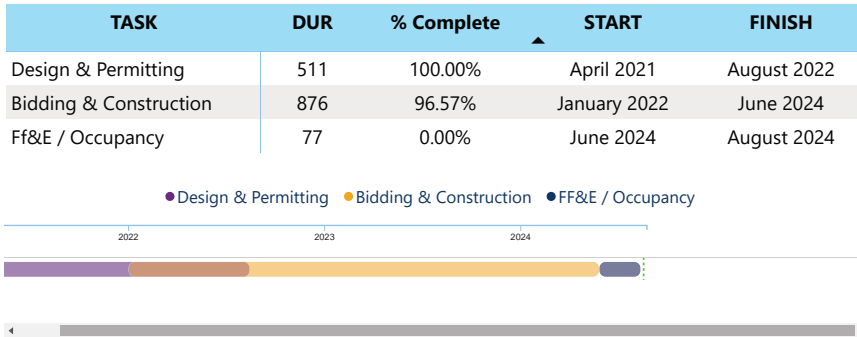


Project Status

Knights View Elementary School (fka Elon, Hawk Ridge, Polo Relief) project is substantially complete. Punch list is complete with the exception of a few low voltage items. The Ardrey Kell roadwork asphalt and striping is complete with the exception of the mast arm traffic signal, which Duke Energy is to complete. The FF&E teams have completed loading the building and it is ready for occupancy.



Schedule



Financial Summary

Financial Summary

Budget

Contracts

Expenditures

MWSBE

FACILITY	BUDGET	TOTAL COMMITTED	TO BE COMMITTED	PAID TO DATE	MWSBE %
Knights View Elementary School - Elon/Hawk Ridge Relief	\$59,997,683	\$53,196,685	\$6,800,999	\$47,397,821	46.38%



Project Information

Bond Program	2017 Bond
Facility Name	Bruns Avenue Elementary School (17)
Address	501 South Bruns Avenue Charlotte, NC 28208
Architect	ADW
Construction Manager	Edifice
Percent Complete	95%
Occupancy On	August 2024

Scope of Work

New 45-classroom elementary school (K-5); replaces old school built in 1969.

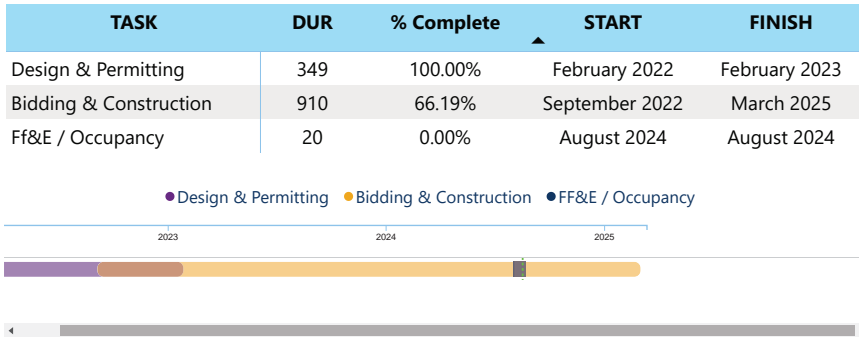


Project Status

The Bruns Avenue Elementary School Replacement project team continued to finalize the punch list throughout the project. The low voltage systems (video surveillance, intercom, intrusion detection, etc.) are being finalized and beginning to come online. The Construction Manager has final building and Fire Marshal inspections scheduled the first week of August. FF&E installation will begin upon approval. The site concrete, asphalt and landscaping is complete for this phase of work. Demolition of the old building and associated site work will commence after occupancy of the new building.



Schedule



Financial Summary

Financial Summary

Budget

Contracts

Expenditures

MWSBE

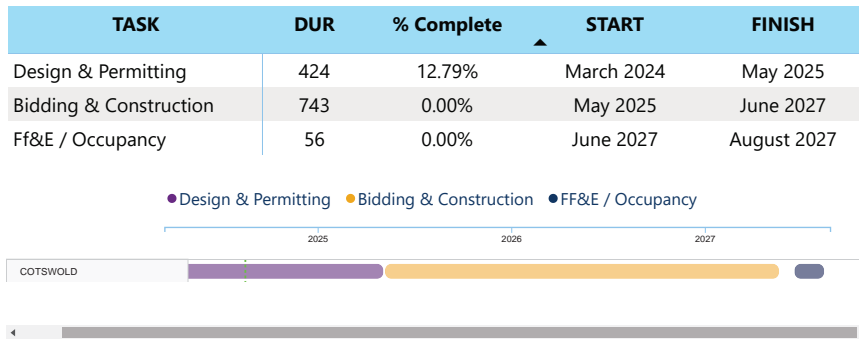
FACILITY	BUDGET	TOTAL COMMITTED	TO BE COMMITTED	PAID TO DATE	MWSBE %
Bruns Academy Replacement	\$48,859,580	\$46,446,217	\$2,413,363	\$31,430,498	33.30%



Project Information

Bond Program	2023 Bond
Facility Name	Cotswold Elementary School (23)
Address	300 Greenwich Road Charlotte, NC 28211
Architect	Little Diversified
Construction Manager	Clancy & Theys in Partnership with The Daniele Company
Percent Complete	0%
Occupy On	August 2027

Schedule



Scope of Work

Onsite replacement, collapsing paired school into Billingsville for project duration.



Project Status

Cotswold Elementary Replacement School project continues to progress in the schematic design phase. The project consists of a replacement elementary school.



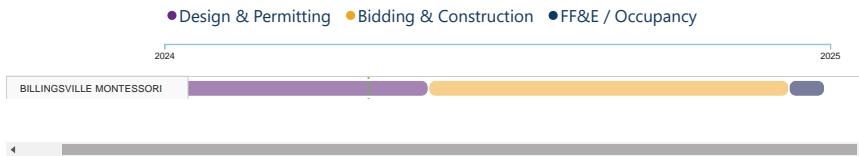


Project Information

Bond Program	2023 Bond
Facility Name	Billingsville Montessori Upfit (23)
Address	124 Skyland Avenue Charlotte, NC 28205
Architect	WHN
Construction Manager	Clancy & Theys in Partnership with The Daniele Company
Percent Complete	0%
Occupancy On	August 2025

Schedule

TASK	DUR	% Complete	START	FINISH
Design & Permitting	210	29.05%	March 2024	October 2024
Bidding & Construction	280	0.00%	October 2024	July 2025
Ff&E / Occupancy	27	0.00%	July 2025	August 2025



Scope of Work

Repurpose Billingsville for relocated Montessori PK-6 program; demolish Chantilly. Cotswold to occupy Billingsville August 2025; Chantilly Montessori to occupy Billingsville 2027.



Project Status

Billingsville Montessori Upfit due diligence activities continue to progress. The architect submitted their schematic design submittal to CMS for review and comments. The project architect is actively working to develop the security vestibule and other Montessori project requirements.





Financial Summary

Financial Summary

Budget

Contracts

Expenditures

MWSBE

FACILITY ▲	BUDGET	TOTAL COMMITTED	TO BE COMMITTED	PAID TO DATE	MWSBE %
Cotswold ES/Billingsville	\$80,555,856	\$6,766,553	\$73,789,303	\$96,426	6.57%



Project Information

Bond Program	2023 Bond
Facility Name	Northwest School of the Arts (23)
Address	1415 Beatties Ford Road Charlotte, NC 28216
Architect	LS3P Associates
Construction Manager	Balfour Beatty
Percent Complete	2%
Occupancy On	August 2026

Schedule

TASK	DUR	% Complete	START	FINISH
Design & Permitting	111	100.00%	October 2023	February 2024
Bidding & Construction	1228	7.26%	February 2024	June 2027
Ff&E / Occupancy	27	0.00%	July 2026	August 2026



Scope of Work

Final Phase of work to include a new specialty classroom space and 9-12 conversion/expansion.



Project Status

The Northwest School of the Arts Phase 2 is scheduled to start geo-piers the first week of July for the new building (G). HVAC Hydronic piping work has also started in building E. There have been several pre-construction meetings with sub-contractors to start work as smoothly as possible. The team is coordinating with the school for access to needed areas over the summer.



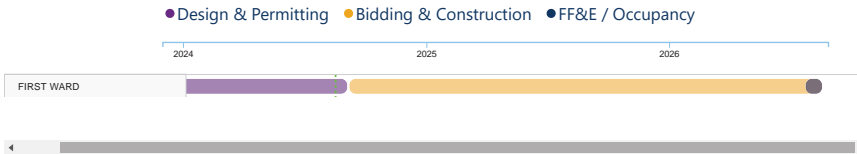


Project Information

Bond Program	2023 Bond
Facility Name	First Ward Elementary School (23)
Address	715 North Caldwell Street Charlotte, NC 28202
Architect	Boomerang Design
Construction Manager	Edifice
Percent Complete	0%
Occupy On	August 2026

Schedule

TASK	DUR	% Complete	START	FINISH
Design & Permitting	287	55.72%	December 2023	September 2024
Bidding & Construction	711	0.00%	September 2024	August 2026
Ff&E / Occupancy	25	0.00%	August 2026	August 2026



Scope of Work

Renovate First Ward as full magnet 6-8.



Project Status

The First Ward Arts Middle School Magnet design development review is complete and comments returned to the architect for incorporation into the project. The construction manager is developing their logistics plan, which will require phasing of construction work to allow work during school occupancy. CMS leadership will be invited to review the logistic plans and provide their comments during the month of July. The project's scope includes miscellaneous renovations, a security vestibule, middle school magnet arts labs, and upfitting primary classrooms to accommodate secondary school students.





Financial Summary

Financial Summary

Budget

Contracts

Expenditures

MWSBE

FACILITY ▲	BUDGET	TOTAL COMMITTED	TO BE COMMITTED	PAID TO DATE	MWSBE %
Northwest School of the Arts/First Ward	\$93,654,147	\$55,208,472	\$38,445,675	\$643,110	10.41%



Project Information

Bond Program	2023 Bond
Facility Name	Marie G Davis Montessori Upfit (23)
Address	3351 Griffith Street Charlotte, NC 28203
Architect	MPS
Construction Manager	TBD - Hard Bid
Percent Complete	0%
Occupy On	August 2025

Scope of Work

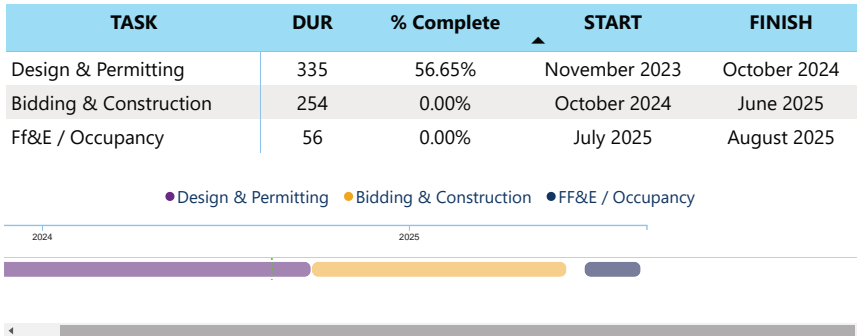
Convert to 7-12 Montessori to replace use at J.T. Williams and expand program.



Project Status

The Marie G. Davis Montessori Upfit project design continues to progress in the construction document phase. Design review and focus meetings with CMS leadership team were held to discuss the project's scope, move logistics and construction activities. The design team will be submitting documents for building permit approval in August. The project scope includes miscellaneous renovations and converting the existing facility to a Montessori 6-12 facility including a security vestibule, maker space, theatrical classroom, life skills classroom, exterior programming elements and upfitting primary classrooms to accommodate secondary school students.

Schedule



Financial Summary

Financial Summary

- Budget
- Contracts
- Expenditures
- MWSBE

FACILITY	BUDGET	TOTAL COMMITTED	TO BE COMMITTED	PAID TO DATE	MWSBE %
Marie G Davis Montessori Upfit	\$9,174,783	\$941,283	\$8,233,500	\$257,820	22.98%



Project Information

Bond Program	2023 Bond
Facility Name	New Second Ward High School (23)
Address	TBD
Architect	LS3P Associates
Construction Manager	Rodgers Builders, Inc. in Association with Walter B. Davis Company
Percent Complete	0%
Occupy On	August 2028

Scope of Work

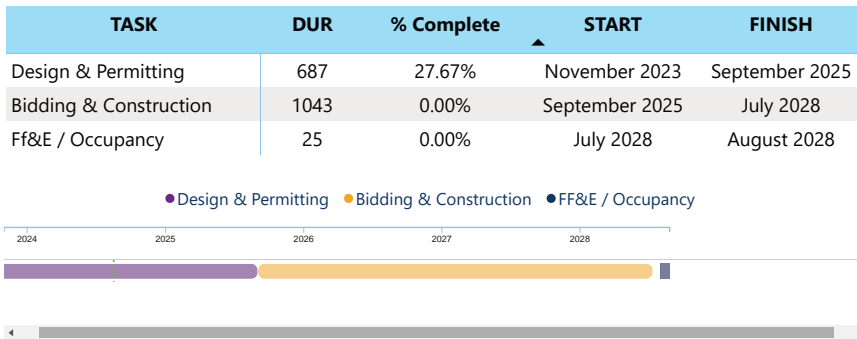
Full magnet high school on old Metro site; relocate program from Hawthorne site.



Project Status

CMS is currently reviewing the schematic design for the New Second Ward High School project. The design team and construction manager have also developed an early demolition scope for the removal of the "old Metro School". Prequalification for sub-contractors related to the demolition package is complete and bids in August.

Schedule



Financial Summary

Financial Summary

- Budget
- Contracts
- Expenditures
- MWSBE

FACILITY	BUDGET	TOTAL COMMITTED	TO BE COMMITTED	PAID TO DATE	MWSBE %
New Second Ward High School	\$176,810,460	\$15,859,769	\$160,950,691	\$936,668	11.22%



Project Information

Bond Program	2023 Bond
Facility Name	New Middle School 1 South (23)
Address	5400 Campe Verde Lane Charlotte, NC 28277
Architect	Hord Coplan Macht, Inc.
Construction Manager	Messer Construction Company
Percent Complete	0%
Occupy On	August 2026

Scope of Work

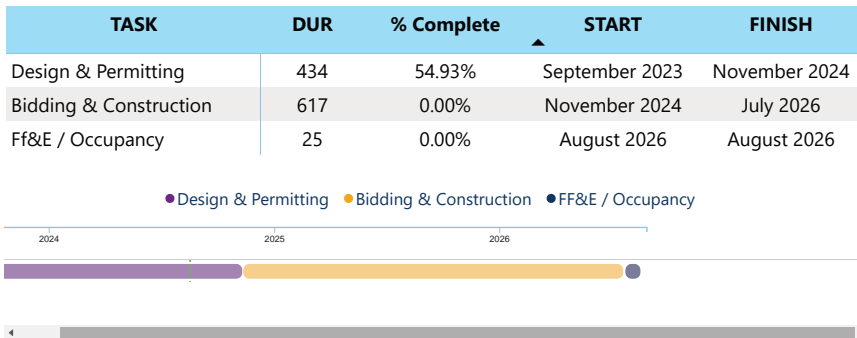
Baseline 54-classroom Middle School facility to relieve Community House MS, Jay M. Robinson MS and Rea Farms STEAM K-8.



Project Status

The New Middle School #1 South project team continues to track City Engineering and Land Development document submissions. Discussions with Charlotte Department of Transportation, Charlotte Water, and Utility Service providers are ongoing regarding road improvements at Golf Links Road. The construction manager has developed prequalification and bid documents for the early procurement packages due to long lead concerns for building materials. The project consists of a new middle school facility with the required exterior improvements for physical education, and middle school athletic programs.

Schedule



Financial Summary

Financial Summary

- Budget
- Contracts
- Expenditures
- MWSBE

FACILITY	BUDGET	TOTAL COMMITTED	TO BE COMMITTED	PAID TO DATE	MWSBE %
New Middle School #1 South	\$101,089,262	\$7,858,545	\$93,230,717	\$1,737,509	6.16%



Project Information

Bond Program	2023 Bond
Facility Name	North Mecklenburg High School Replacement (23)
Address	Old Statesville Road Huntersville, NC 28078
Architect	ADW Architects
Construction Manager	New Atlantic Contracting, Inc.
Percent Complete	0%
Occupy On	August 2028

Scope of Work

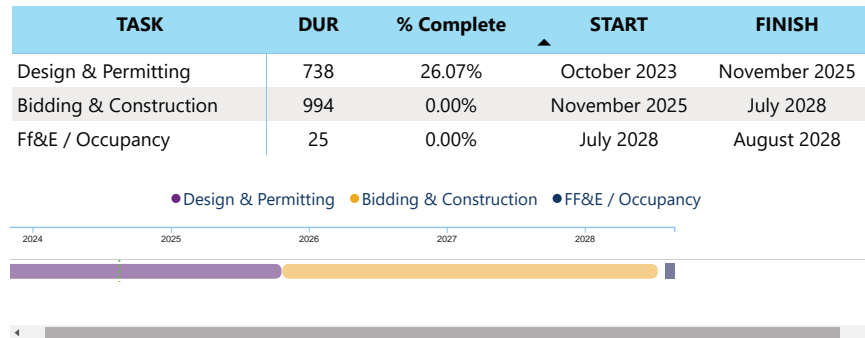
Onsite replacement of balance of campus and comprehensive athletics package.



Project Status

The North Mecklenburg High School Replacement project continues to progress in the design development phase. This deliverable is due for review and comments in September. As the design progresses, the construction manager is developing logistical plans to safely execute the complex construction surrounding this project. The project provides a full replacement of the comprehensive high school.

Schedule



Financial Summary

Financial Summary

- Budget
- Contracts
- Expenditures
- MWSBE

FACILITY	BUDGET	TOTAL COMMITTED	TO BE COMMITTED	PAID TO DATE	MWSBE %
North Mecklenburg High School Replacement	\$228,464,171	\$19,126,273	\$209,337,898	\$1,510,241	6.97%

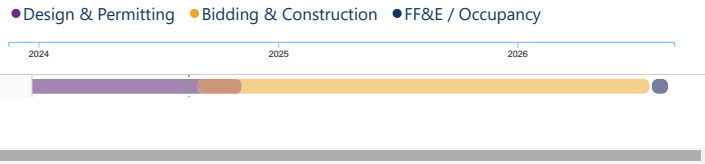


Project Information

Bond Program	2023 Bond
Facility Name	Park Road Elementary School (23)
Address	3701 Haven Drive Charlotte, NC 28209
Architect	Ratio
Construction Manager	Vannoy-McFarland, a JV
Percent Complete	1%
Occupy On	August 2026

Schedule

TASK	DUR	% Complete	START	FINISH
Design & Permitting	365	47.45%	November 2023	November 2024
Bidding & Construction	690	0.00%	September 2024	July 2026
Ff&E / Occupancy	25	0.00%	August 2026	August 2026



Scope of Work

Replace with 45-classroom school for Dilworth paired schools.

Project Status

The New Park Road Elementary School design development review is complete and comments have been returned to the architect for incorporation. CMS leadership completed their review of design development documents. The construction manager is developing prequalification documents and scheduling activities as required. Demolition of the existing school is scheduled in the fall of 2024 followed by civil construction of the site and then the new school construction. The project consists of a new elementary school.





Project Information

Bond Program	2023 Bond
Facility Name	Dilworth Latta (23)
Address	405 East Park Avenue Charlotte, NC 28203
Architect	
Construction Manager	
Percent Complete	1%
Occupy On	August 2027

Scope of Work

Repurpose Dilworth for a TBD middle school magnet.



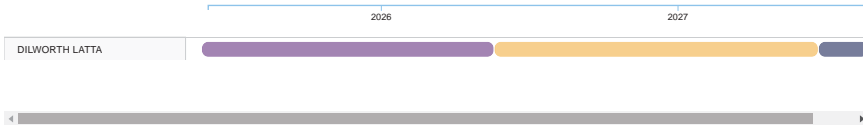
Project Status

The Dilworth Latta project is scheduled to start design in third quarter of 2025. Minor up-fit construction work is underway to accommodate two additional classrooms for occupancy in August 2024.

Schedule

TASK	DUR	% Complete	START	FINISH
Design & Permitting	359	0.00%	June 2025	May 2026
Bidding & Construction	398	0.00%	May 2026	June 2027
Ff&E / Occupancy	60	0.00%	July 2027	August 2027

● Design & Permitting ● Bidding & Construction ● FF&E / Occupancy





Project Information

Bond Program	2023 Bond
Facility Name	Sedgefield Montessori (23)
Address	715 Hartford Avenue Charlotte, NC 28209
Architect	WHN
Construction Manager	Vannoy-McFarland, a JV
Percent Complete	1%
Occupy On	August 2024

Scope of Work

Convert for Montessori PK-6 program.



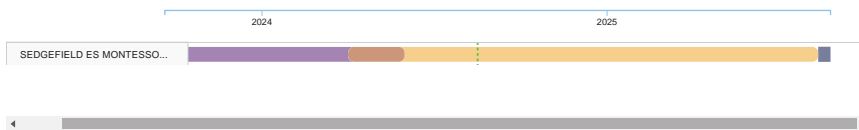
Project Status

The Sedgefield Elementary School Montessori Upfit project continues to progress with building permit approval of Phase 2. Phase 2 includes the incorporation of life skills classrooms, security vestibule and minor upfits/renovations to the main building.

Schedule

TASK	DUR	% Complete	START	FINISH
Design & Permitting	261	88.52%	September 2023	June 2024
Bidding & Construction	499	6.61%	April 2024	August 2025
Ff&E / Occupancy	13	0.00%	August 2025	August 2025

● Design & Permitting ● Bidding & Construction ● FF&E / Occupancy





Financial Summary

Financial Summary

Budget

Contracts

Expenditures

MWSBE

FACILITY ▲	BUDGET	TOTAL COMMITTED	TO BE COMMITTED	PAID TO DATE	MWSBE %
Park Road ES/Dilworth Latta/Sedgefield	\$89,491,970	\$11,326,555	\$78,165,415	\$1,732,159	17.13%



Project Information

Bond Program	2023 Bond
Facility Name	South Mecklenburg High School Replacement (23)
Address	8900 Park Road Charlotte, NC 28210
Architect	Morris Berg Architects
Construction Manager	Whiting-Turner Contracting Company
Percent Complete	0%
Occupy On	August 2027

Scope of Work

Final phases of work, to include onsite replacement of balance of campus to +/- 100 classroom baseline, comprehensive athletics package.

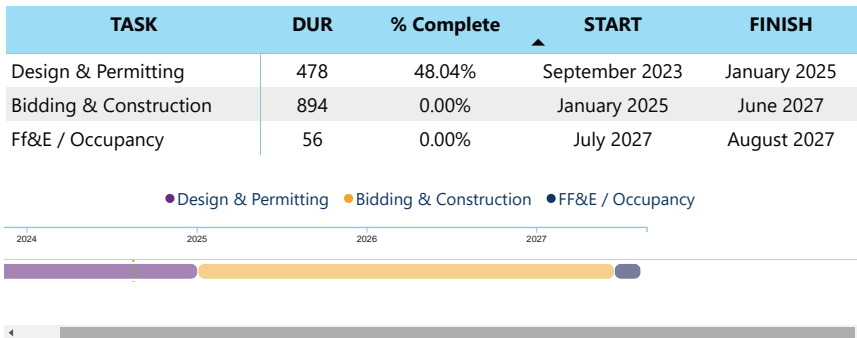


Project Status

The South Mecklenburg High School Replacement project continues to progress in the design development phase. The construction manager continues to develop the logistics plan coordinating the required construction work phases at this occupied school facility. Focus meetings continue with CMS leadership to obtain academic and operational information to improve the outcome of the design effort. The project consists of a partial campus replacement and significant improvements to the football stadium and athletic fields.



Schedule



Financial Summary

Financial Summary

- Budget
- Contracts
- Expenditures
- MWSBE

FACILITY	BUDGET	TOTAL COMMITTED	TO BE COMMITTED	PAID TO DATE	MWSBE %
South Mecklenburg High School Replacement	\$127,909,253	\$11,836,308	\$116,072,945	\$1,919,531	9.65%



Project Information

Bond Program	2023 Bond
Facility Name	Beverly Woods Elementary School (23)
Address	6001 Quail Hollow Road Charlotte, NC 28210
Architect	
Construction Manager	
Percent Complete	0%
Occupy On	August 2028

Scope of Work

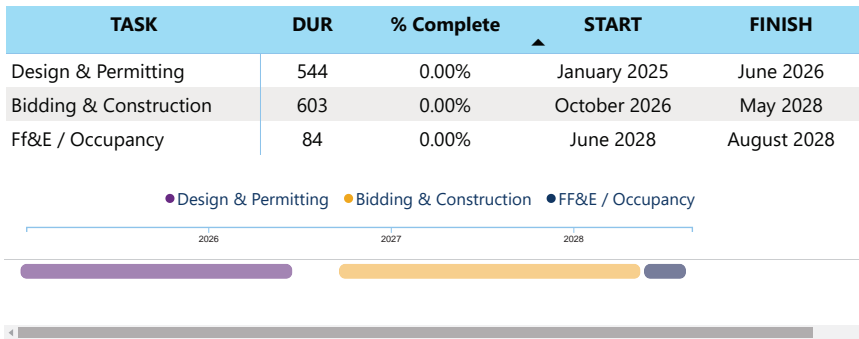
Onsite replacement with 45-classroom baseline school.

Project Status

Due diligence activities are underway. Request for Qualifications for Architects and Construction Managers will be advertised Fall 2024.



Schedule



Financial Summary

Financial Summary

Budget

Contracts

Expenditures

MWSBE

FACILITY	BUDGET	TOTAL COMMITTED	TO BE COMMITTED	PAID TO DATE	MWSBE %
Beverly Woods Elementary School	\$71,237,700	\$0	\$71,237,700	\$0	



Project Information

Bond Program	2023 Bond
Facility Name	Huntersville Elementary School (23)
Address	200 Gilead Road Huntersville, NC 28078
Architect	
Construction Manager	
Percent Complete	0%
Occupy On	August 2028

Scope of Work

Onsite replacement with 45-classroom baseline facility.

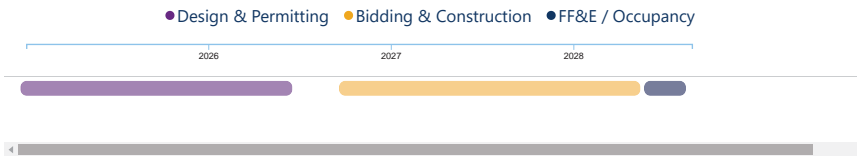
Project Status

Due diligence activities are underway. Request for Qualifications for Architects and Construction Managers will be advertised Fall 2024.



Schedule

TASK	DUR	% Complete	START	FINISH
Design & Permitting	544	0.00%	January 2025	June 2026
Bidding & Construction	603	0.00%	October 2026	May 2028
Ff&E / Occupancy	84	0.00%	June 2028	August 2028



Financial Summary

Financial Summary

Budget

Contracts

Expenditures

MWSBE

FACILITY	BUDGET	TOTAL COMMITTED	TO BE COMMITTED	PAID TO DATE	MWSBE %
Huntersville Elementary School	\$66,235,904	\$0	\$66,235,904	\$0	



Project Information

Bond Program	2023 Bond
Facility Name	New Middle School 2 North (23)
Address	TBD
Architect	
Construction Manager	
Percent Complete	0%
Occupy On	August 2028

Scope of Work

Baseline 54-classroom facility at Stumptown Road to relieve Bailey Road MS, Davidson K-8, and J.M. Alexander MS.

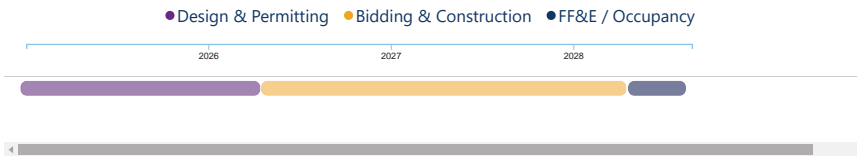
Project Status

Due diligence activities are underway. Request for Qualifications for Architects and Construction Managers will be advertised Fall 2024.



Schedule

TASK	DUR	% Complete	START	FINISH
Design & Permitting	480	0.00%	January 2025	April 2026
Bidding & Construction	731	0.00%	April 2026	April 2028
Ff&E / Occupancy	116	0.00%	May 2028	August 2028



Financial Summary

Financial Summary

Budget

Contracts

Expenditures

MWSBE

FACILITY	BUDGET	TOTAL COMMITTED	TO BE COMMITTED	PAID TO DATE	MWSBE %
New Middle School #2 North	\$92,371,482	\$0	\$92,371,482	\$0	



Project Information

Bond Program	2023 Bond
Facility Name	Berryhill School (23)
Address	TBD
Architect	
Construction Manager	
Percent Complete	0%
Occupy On	August 2028

Scope of Work

Offsite replacement and demolish existing building.

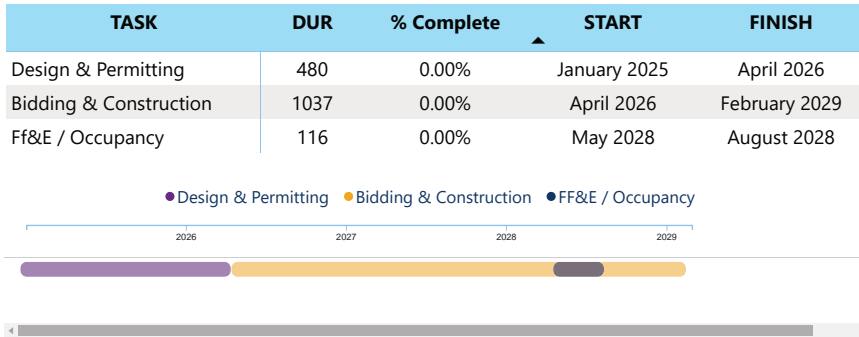


Project Status

Due diligence activities are underway. Request for Qualifications for Architects and Construction Managers will be advertised Fall 2024.



Schedule



Financial Summary

Financial Summary

- Budget
- Contracts
- Expenditures
- MWSBE

FACILITY	BUDGET	TOTAL COMMITTED	TO BE COMMITTED	PAID TO DATE	MWSBE %
Berryhill School	\$104,286,451	\$0	\$104,286,451	\$0	



Project Information

Bond Program	2017 Bond
Facility Name	Ballantyne Ridge High School (17)
Address	4004 Toringdon Way Charlotte, NC 28277
Architect	Ratio
Construction Manager	Messer
Percent Complete	96%
Occupy On	August 2024

Scope of Work

New 100-classroom high school to relieve South Mecklenburg, Ardrey Kell and Myers Park HS.

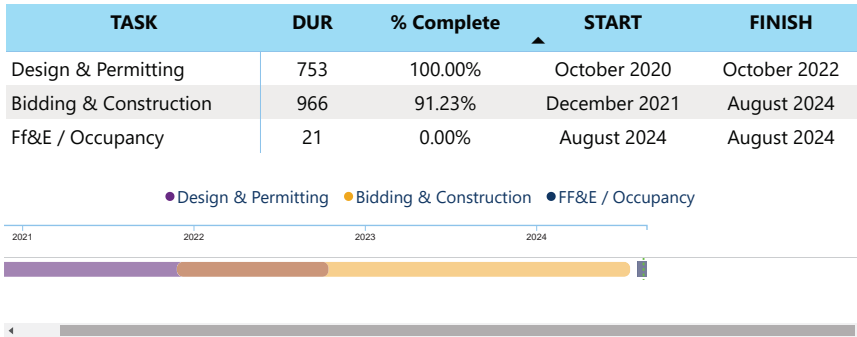


Project Status

The New Ballantyne Ridge High School project team continued coordinating the numerous trades on site including site work, exterior façade, mechanical, electrical and plumbing (MEP). Startup and testing of the low voltage systems continue. Final cleaning is occurring throughout the building as well as final inspections from various inspectors and Fire Marshal. Landscapers continue to finalize the site along with site concrete. The traffic signal is progressing at Community House and Toringdon along with road modifications. FF&E has started installation.



Schedule



Financial Summary

Financial Summary

Budget

Contracts

Expenditures

MWSBE

FACILITY	BUDGET	TOTAL COMMITTED	TO BE COMMITTED	PAID TO DATE	MWSBE %
Ballantyne Ridge High School	\$158,621,503	\$146,226,887	\$12,394,616	\$115,822,090	19.52%



Project Information

Bond Program	2017 Bond
Facility Name	Bruns Avenue Elementary School (17)
Address	501 South Bruns Avenue Charlotte, NC 28208
Architect	ADW
Construction Manager	Edifice
Percent Complete	95%
Occupancy On	August 2024

Scope of Work

New 45-classroom elementary school (K-5); replaces old school built in 1969.

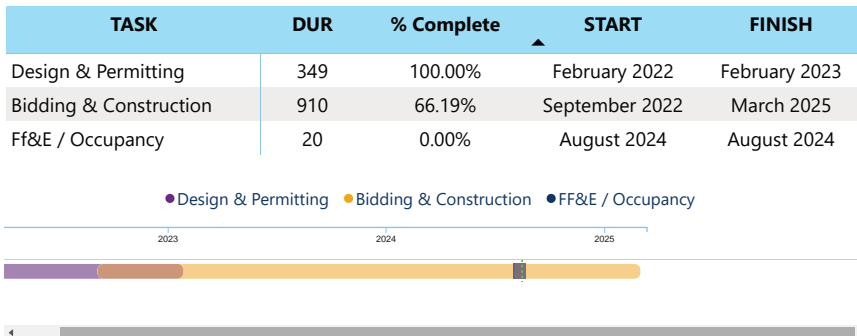


Project Status

The Bruns Avenue Elementary School Replacement project team continued to finalize the punch list throughout the project. The low voltage systems (video surveillance, intercom, intrusion detection, etc.) are being finalized and beginning to come online. The Construction Manager has final building and Fire Marshal inspections scheduled the first week of August. FF&E installation will begin upon approval. The site concrete, asphalt and landscaping is complete for this phase of work. Demolition of the old building and associated site work will commence after occupancy of the new building.



Schedule



Financial Summary

Financial Summary

- Budget
- Contracts
- Expenditures
- MWSBE

FACILITY	BUDGET	TOTAL COMMITTED	TO BE COMMITTED	PAID TO DATE	MWSBE %
Bruns Academy Replacement	\$48,859,580	\$46,446,217	\$2,413,363	\$31,430,498	33.30%



Project Information

Bond Program	2017 Bond
Facility Name	Knights View Elementary School (17)
Address	11000 Beau Riley Road Charlotte, NC 28277
Architect	Little Diversified Architects
Construction Manager	Balfour Beatty
Percent Complete	99%
Occupancy On	August 2024

Scope of Work

New 45-classroom elementary school to relieve Elon, Hawk Ridge, Polo.

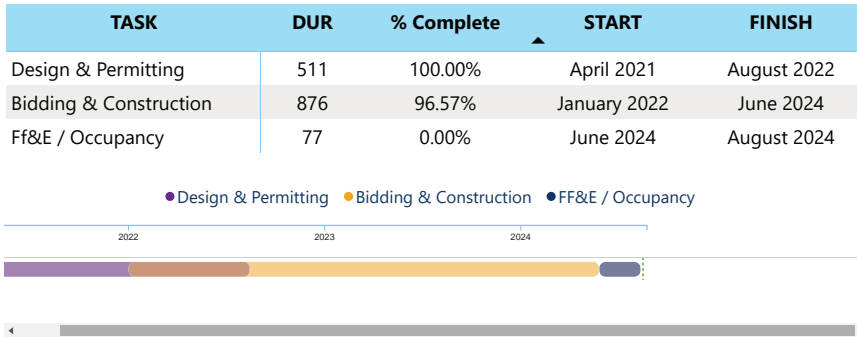


Project Status

Knights View Elementary School (fka Elon, Hawk Ridge, Polo Relief) project is substantially complete. Punch list is complete with the exception of a few low voltage items. The Ardrey Kell roadwork asphalt and striping is complete with the exception of the mast arm traffic signal, which Duke Energy is to complete. The FF&E teams have completed loading the building and it is ready for occupancy.



Schedule



Financial Summary

Financial Summary

Budget

Contracts

Expenditures

MWSBE

FACILITY	BUDGET	TOTAL COMMITTED	TO BE COMMITTED	PAID TO DATE	MWSBE %
Knights View Elementary School - Elon/Hawk Ridge Relief	\$59,997,683	\$53,196,685	\$6,800,999	\$47,397,821	46.38%



Project Information

Bond Program	2017 Bond
Facility Name	Northwest School of the Arts (17)
Address	1415 Beatties Ford Road Charlotte, NC 28216
Architect	LS3P
Construction Manager	Balfour Beatty
Percent Complete	100%
Occupy On	January 2025

Scope of Work

Replace classroom buildings B&D and build classroom addition that supports program. Phase 1 includes parking and U/G stormwater.



Project Status

The Northwest School of the Arts Phase 1 project is complete.

Schedule

TASK	DUR	% Complete	START	FINISH
Design & Permitting	400	100.00%	June 2022	July 2023
Bidding & Construction	365	98.04%	May 2023	May 2024

● Design & Permitting ● Bidding & Construction



Financial Summary

Financial Summary

Budget

Contracts

Expenditures

MWSBE

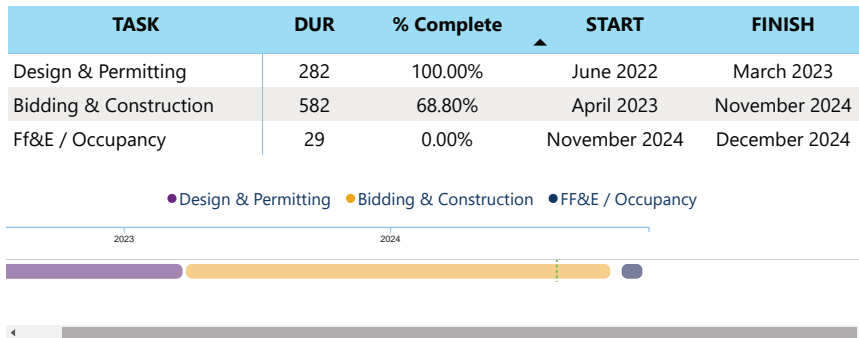
FACILITY	BUDGET	TOTAL COMMITTED	TO BE COMMITTED	PAID TO DATE	MWSBE %
Northwest School of the Arts	\$11,417,000	\$10,001,090	\$1,415,910	\$7,461,927	45.53%



Project Information

Bond Program	2017 Bond
Facility Name	South Mecklenburg High School (17)
Address	8900 Park Road Charlotte, NC 28210
Architect	Morris Berg
Construction Manager	Balfour Beatty
Percent Complete	68%
Occupancy On	January 2025

Schedule

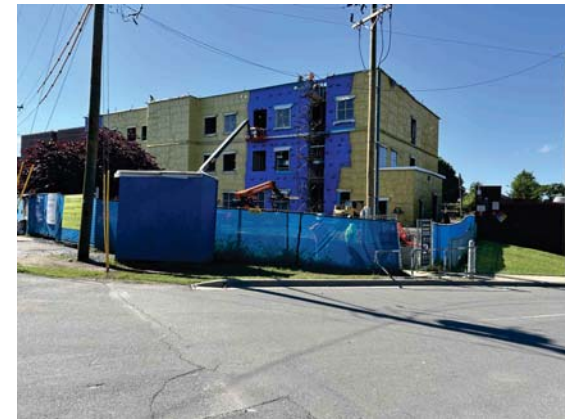


Scope of Work

Replace classroom building built in 1958 to upgrade learning conditions.

Project Status

The South Mecklenburg High School construction manager has completed the brick veneer and installation of windows. Drywall is complete and finish paint is progressing. Mechanical, electrical and plumbing trades are finishing over-head rough ins. The boiler room and air handling units are being finalized.



Financial Summary

Financial Summary

Budget

Contracts

Expenditures

MWSBE

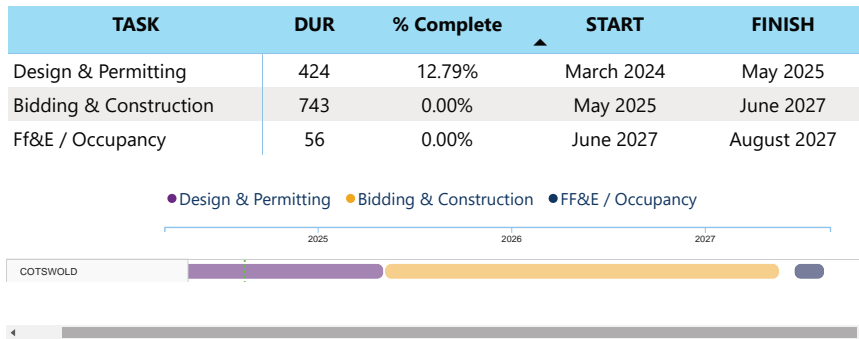
FACILITY	BUDGET	TOTAL COMMITTED	TO BE COMMITTED	PAID TO DATE	MWSBE %
South Mecklenburg HS	\$17,322,927	\$16,172,514	\$1,150,413	\$8,390,290	29.46%



Project Information

Bond Program	2023 Bond
Facility Name	Cotswold Elementary School (23)
Address	300 Greenwich Road Charlotte, NC 28211
Architect	Little Diversified
Construction Manager	Clancy & Theys in Partnership with The Daniele Company
Percent Complete	0%
Occupy On	August 2027

Schedule



Scope of Work

Onsite replacement, collapsing paired school into Billingsville for project duration.



Project Status

Cotswold Elementary Replacement School project continues to progress in the schematic design phase. The project consists of a replacement elementary school.



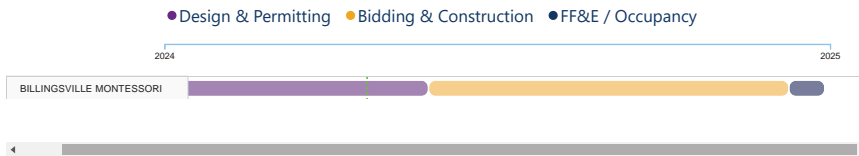


Project Information

Bond Program	2023 Bond
Facility Name	Billingsville Montessori Upfit (23)
Address	124 Skyland Avenue Charlotte, NC 28205
Architect	WHN
Construction Manager	Clancy & Theys in Partnership with The Daniele Company
Percent Complete	0%
Occupy On	August 2025

Schedule

TASK	DUR	% Complete	START	FINISH
Design & Permitting	210	29.05%	March 2024	October 2024
Bidding & Construction	280	0.00%	October 2024	July 2025
Ff&E / Occupancy	27	0.00%	July 2025	August 2025



Scope of Work

Repurpose Billingsville for relocated Montessori PK-6 program; demolish Chantilly. Cotswold to occupy Billingsville August 2025; Chantilly Montessori to occupy Billingsville 2027.



Project Status

Billingsville Montessori Upfit due diligence activities continue to progress. The architect submitted their schematic design submittal to CMS for review and comments. The project architect is actively working to develop the security vestibule and other Montessori project requirements.





Financial Summary

Financial Summary

Budget

Contracts

Expenditures

MWSBE

FACILITY ▲	BUDGET	TOTAL COMMITTED	TO BE COMMITTED	PAID TO DATE	MWSBE %
Cotswold ES/Billingsville	\$80,555,856	\$6,766,553	\$73,789,303	\$96,426	6.57%



Project Information

Bond Program	2023 Bond
Facility Name	Marie G Davis Montessori Upfit (23)
Address	3351 Griffith Street Charlotte, NC 28203
Architect	MPS
Construction Manager	TBD - Hard Bid
Percent Complete	0%
Occupy On	August 2025

Scope of Work

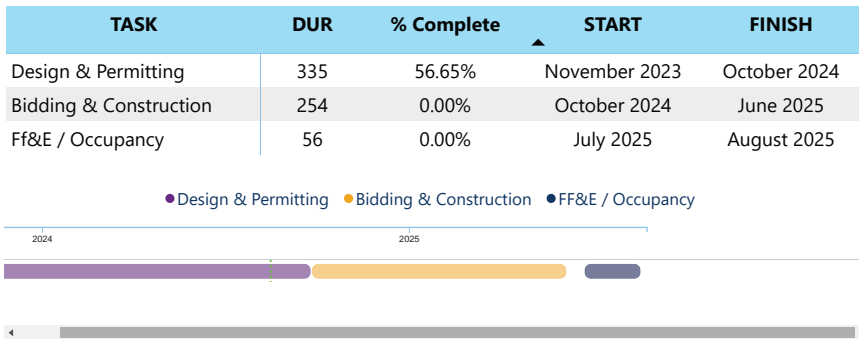
Convert to 7-12 Montessori to replace use at J.T. Williams and expand program.



Project Status

The Marie G. Davis Montessori Upfit project design continues to progress in the construction document phase. Design review and focus meetings with CMS leadership team were held to discuss the project's scope, move logistics and construction activities. The design team will be submitting documents for building permit approval in August. The project scope includes miscellaneous renovations and converting the existing facility to a Montessori 6-12 facility including a security vestibule, maker space, theatrical classroom, life skills classroom, exterior programming elements and upfitting primary classrooms to accommodate secondary school students.

Schedule



Financial Summary

Financial Summary

- Budget
- Contracts
- Expenditures
- MWSBE

FACILITY	BUDGET	TOTAL COMMITTED	TO BE COMMITTED	PAID TO DATE	MWSBE %
Marie G Davis Montessori Upfit	\$9,174,783	\$941,283	\$8,233,500	\$257,820	22.98%



Project Information

Bond Program	2023 Bond
Facility Name	New Middle School 1 South (23)
Address	5400 Campe Verde Lane Charlotte, NC 28277
Architect	Hord Coplan Macht, Inc.
Construction Manager	Messer Construction Company
Percent Complete	0%
Occupy On	August 2026

Scope of Work

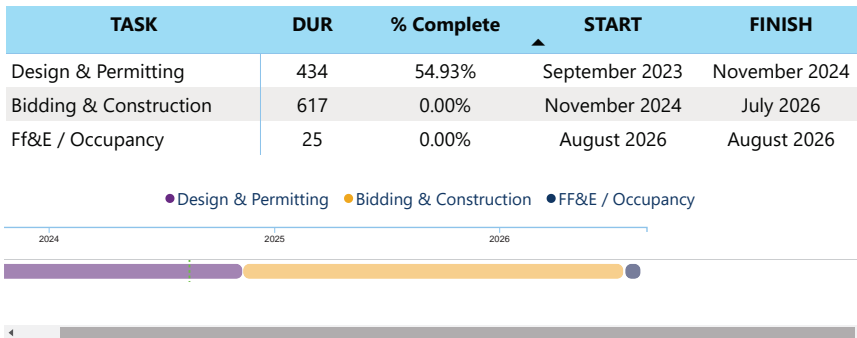
Baseline 54-classroom Middle School facility to relieve Community House MS, Jay M. Robinson MS and Rea Farms STEAM K-8.



Project Status

The New Middle School #1 South project team continues to track City Engineering and Land Development document submissions. Discussions with Charlotte Department of Transportation, Charlotte Water, and Utility Service providers are ongoing regarding road improvements at Golf Links Road. The construction manager has developed prequalification and bid documents for the early procurement packages due to long lead concerns for building materials. The project consists of a new middle school facility with the required exterior improvements for physical education, and middle school athletic programs.

Schedule



Financial Summary

Financial Summary

Budget

Contracts

Expenditures

MWSBE

FACILITY	BUDGET	TOTAL COMMITTED	TO BE COMMITTED	PAID TO DATE	MWSBE %
New Middle School #1 South	\$101,089,262	\$7,858,545	\$93,230,717	\$1,737,509	6.16%



Project Information

Bond Program	2023 Bond
Facility Name	New Second Ward High School (23)
Address	TBD
Architect	LS3P Associates
Construction Manager	Rodgers Builders, Inc. in Association with Walter B. Davis Company
Percent Complete	0%
Occupy On	August 2028

Scope of Work

Full magnet high school on old Metro site; relocate program from Hawthorne site.

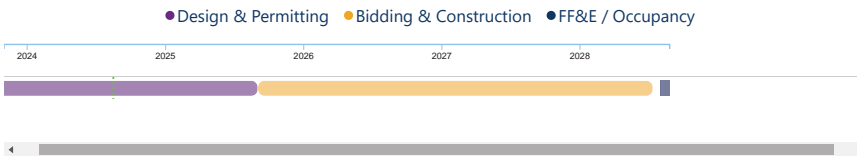


Project Status

CMS is currently reviewing the schematic design for the New Second Ward High School project. The design team and construction manager have also developed an early demolition scope for the removal of the "old Metro School". Prequalification for sub-contractors related to the demolition package is complete and bids in August.

Schedule

TASK	DUR	% Complete	START	FINISH
Design & Permitting	687	27.67%	November 2023	September 2025
Bidding & Construction	1043	0.00%	September 2025	July 2028
Ff&E / Occupancy	25	0.00%	July 2028	August 2028



Financial Summary

Financial Summary

- Budget
- Contracts
- Expenditures
- MWSBE

FACILITY	BUDGET	TOTAL COMMITTED	TO BE COMMITTED	PAID TO DATE	MWSBE %
New Second Ward High School	\$176,810,460	\$15,859,769	\$160,950,691	\$936,668	11.22%



Project Information

Bond Program	2023 Bond
Facility Name	Northwest School of the Arts (23)
Address	1415 Beatties Ford Road Charlotte, NC 28216
Architect	LS3P Associates
Construction Manager	Balfour Beatty
Percent Complete	2%
Occupancy On	August 2026

Schedule

TASK	DUR	% Complete	START	FINISH
Design & Permitting	111	100.00%	October 2023	February 2024
Bidding & Construction	1228	7.26%	February 2024	June 2027
Ff&E / Occupancy	27	0.00%	July 2026	August 2026



Scope of Work

Final Phase of work to include a new specialty classroom space and 9-12 conversion/expansion.



Project Status

The Northwest School of the Arts Phase 2 is scheduled to start geo-piers the first week of July for the new building (G). HVAC Hydronic piping work has also started in building E. There have been several pre-construction meetings with sub-contractors to start work as smoothly as possible. The team is coordinating with the school for access to needed areas over the summer.

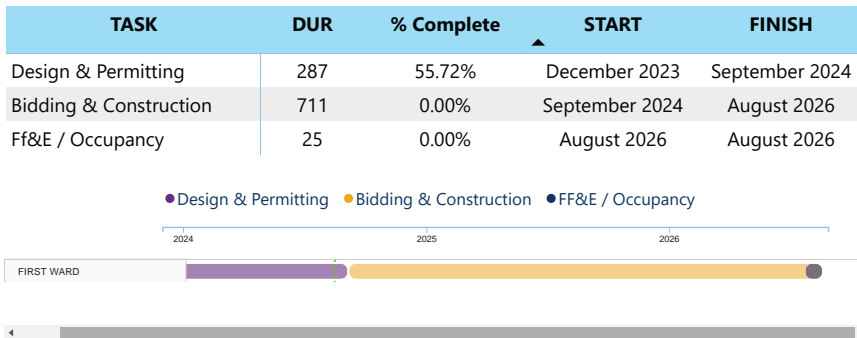




Project Information

Bond Program	2023 Bond
Facility Name	First Ward Elementary School (23)
Address	715 North Caldwell Street Charlotte, NC 28202
Architect	Boomerang Design
Construction Manager	Edifice
Percent Complete	0%
Occupy On	August 2026

Schedule



Scope of Work

Renovate First Ward as full magnet 6-8.



Project Status

The First Ward Arts Middle School Magnet design development review is complete and comments returned to the architect for incorporation into the project. The construction manager is developing their logistics plan, which will require phasing of construction work to allow work during school occupancy. CMS leadership will be invited to review the logistic plans and provide their comments during the month of July. The project's scope includes miscellaneous renovations, a security vestibule, middle school magnet arts labs, and upfitting primary classrooms to accommodate secondary school students.





Financial Summary

Financial Summary

Budget

Contracts

Expenditures

MWSBE

FACILITY	BUDGET	TOTAL COMMITTED	TO BE COMMITTED	PAID TO DATE	MWSBE %
Northwest School of the Arts/First Ward	\$93,654,147	\$55,208,472	\$38,445,675	\$643,110	10.41%



Project Information

Bond Program	2023 Bond
Facility Name	North Mecklenburg High School Replacement (23)
Address	Old Statesville Road Huntersville, NC 28078
Architect	ADW Architects
Construction Manager	New Atlantic Contracting, Inc.
Percent Complete	0%
Occupy On	August 2028

Scope of Work

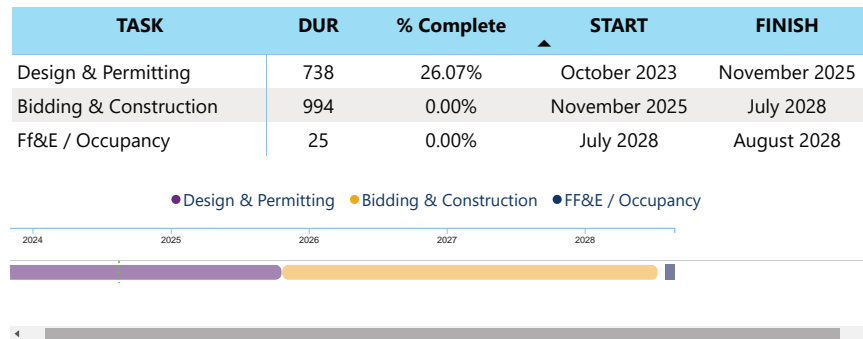
Onsite replacement of balance of campus and comprehensive athletics package.



Project Status

The North Mecklenburg High School Replacement project continues to progress in the design development phase. This deliverable is due for review and comments in September. As the design progresses, the construction manager is developing logistical plans to safely execute the complex construction surrounding this project. The project provides a full replacement of the comprehensive high school.

Schedule



Financial Summary

Financial Summary

Budget

Contracts

Expenditures

MWSBE

FACILITY	BUDGET	TOTAL COMMITTED	TO BE COMMITTED	PAID TO DATE	MWSBE %
North Mecklenburg High School Replacement	\$228,464,171	\$19,126,273	\$209,337,898	\$1,510,241	6.97%



Project Information

Bond Program	2023 Bond
Facility Name	Park Road Elementary School (23)
Address	3701 Haven Drive Charlotte, NC 28209
Architect	Ratio
Construction Manager	Vannoy-McFarland, a JV
Percent Complete	0%
Occupy On	August 2026

Scope of Work

Replace with 45-classroom school for Dilworth paired schools.

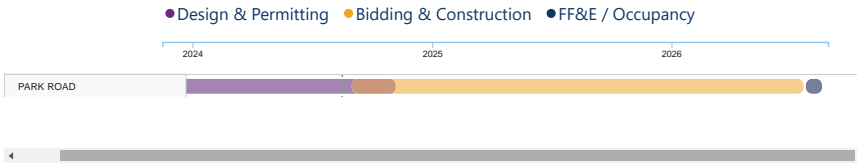
Project Status

The New Park Road Elementary School design development review is complete and comments have been returned to the architect for incorporation. CMS leadership completed their review of design development documents. The construction manager is developing prequalification documents and scheduling activities as required. Demolition of the existing school is scheduled in the fall of 2024 followed by civil construction of the site and then the new school construction. The project consists of a new elementary school.



Schedule

TASK	DUR	% Complete	START	FINISH
Design & Permitting	365	47.45%	November 2023	November 2024
Bidding & Construction	690	0.00%	September 2024	July 2026
Ff&E / Occupancy	25	0.00%	August 2026	August 2026





Project Information

Bond Program	2023 Bond
Facility Name	Dilworth Latta (23)
Address	405 East Park Avenue Charlotte, NC 28203
Architect	
Construction Manager	
Percent Complete	0%
Occupy On	August 2027

Scope of Work

Repurpose Dilworth for a TBD middle school magnet.



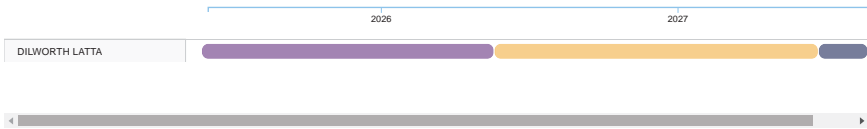
Project Status

The Dilworth Latta project is scheduled to start design in third quarter of 2025. Minor up-fit construction work is underway to accommodate two additional classrooms for occupancy in August 2024.

Schedule

TASK	DUR	% Complete	START	FINISH
Design & Permitting	359	0.00%	June 2025	May 2026
Bidding & Construction	398	0.00%	May 2026	June 2027
Ff&E / Occupancy	60	0.00%	July 2027	August 2027

● Design & Permitting ● Bidding & Construction ● FF&E / Occupancy





Financial Summary

Financial Summary

Budget

Contracts

Expenditures

MWSBE

FACILITY ▲	BUDGET	TOTAL COMMITTED	TO BE COMMITTED	PAID TO DATE	MWSBE %
Park Road ES/Dilworth Latta/Sedgefield	\$89,491,970	\$11,326,555	\$78,165,415	\$1,732,159	17.13%



Project Information

Bond Program	2023 Bond
Facility Name	South Mecklenburg High School Replacement (23)
Address	8900 Park Road Charlotte, NC 28210
Architect	Morris Berg Architects
Construction Manager	Whiting-Turner Contracting Company
Percent Complete	0%
Occupy On	August 2027

Scope of Work

Final phases of work, to include onsite replacement of balance of campus to +/- 100 classroom baseline, comprehensive athletics package.

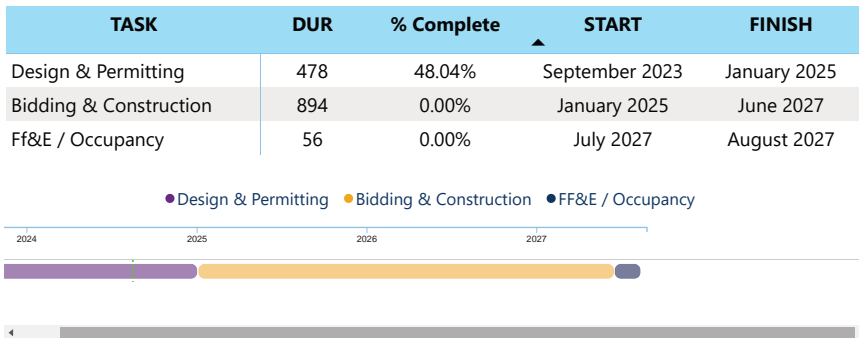


Project Status

The South Mecklenburg High School Replacement project continues to progress in the design development phase. The construction manager continues to develop the logistics plan coordinating the required construction work phases at this occupied school facility. Focus meetings continue with CMS leadership to obtain academic and operational information to improve the outcome of the design effort. The project consists of a partial campus replacement and significant improvements to the football stadium and athletic fields.



Schedule



Financial Summary

Financial Summary

- Budget
- Contracts
- Expenditures
- MWSBE

FACILITY	BUDGET	TOTAL COMMITTED	TO BE COMMITTED	PAID TO DATE	MWSBE %
South Mecklenburg High School Replacement	\$127,909,253	\$11,836,308	\$116,072,945	\$1,919,531	9.65%



Project Information

Bond Program	2023 Bond
Facility Name	Berryhill School (23)
Address	TBD
Architect	
Construction Manager	
Percent Complete	0%
Occupy On	August 2028

Scope of Work

Offsite replacement and demolish existing building.

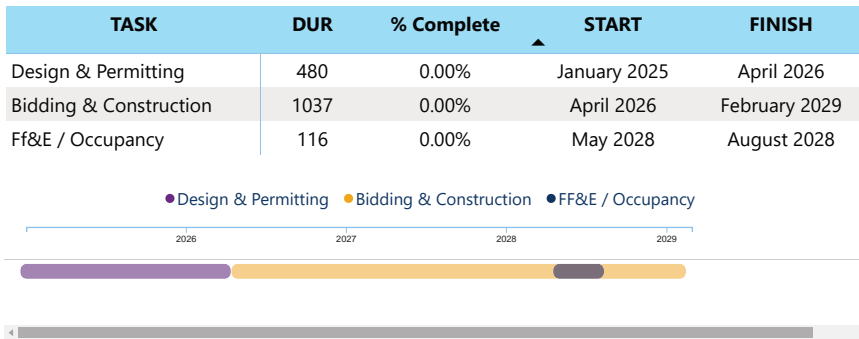


Project Status

Due diligence activities are underway. Request for Qualifications for Architects and Construction Managers will be advertised Fall 2024.



Schedule



Financial Summary

Financial Summary

- Budget
- Contracts
- Expenditures
- MWSBE

FACILITY	BUDGET	TOTAL COMMITTED	TO BE COMMITTED	PAID TO DATE	MWSBE %
Berryhill School	\$104,286,451	\$0	\$104,286,451	\$0	



Project Information

Bond Program	2023 Bond
Facility Name	Beverly Woods Elementary School (23)
Address	6001 Quail Hollow Road Charlotte, NC 28210
Architect	
Construction Manager	
Percent Complete	0%
Occupy On	August 2028

Scope of Work

Onsite replacement with 45-classroom baseline school.

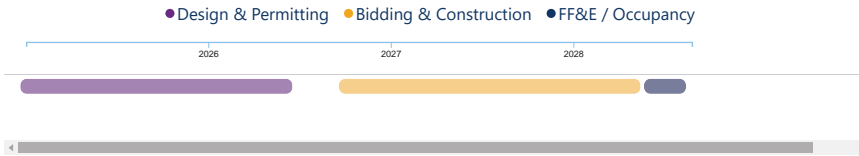
Project Status

Due diligence activities are underway. Request for Qualifications for Architects and Construction Managers will be advertised Fall 2024.



Schedule

TASK	DUR	% Complete	START	FINISH
Design & Permitting	544	0.00%	January 2025	June 2026
Bidding & Construction	603	0.00%	October 2026	May 2028
Ff&E / Occupancy	84	0.00%	June 2028	August 2028



Financial Summary

Financial Summary

Budget

Contracts

Expenditures

MWSBE

FACILITY	BUDGET	TOTAL COMMITTED	TO BE COMMITTED	PAID TO DATE	MWSBE %
Beverly Woods Elementary School	\$71,237,700	\$0	\$71,237,700	\$0	



Project Information

Bond Program	2023 Bond
Facility Name	Huntersville Elementary School (23)
Address	200 Gilead Road Huntersville, NC 28078
Architect	
Construction Manager	
Percent Complete	0%
Occupy On	August 2028

Scope of Work

Onsite replacement with 45-classroom baseline facility.

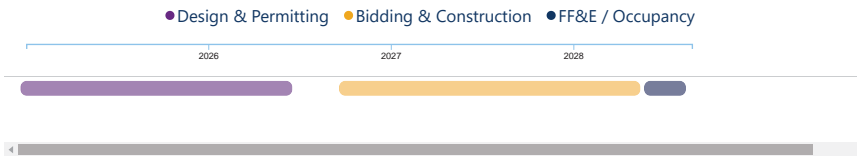
Project Status

Due diligence activities are underway. Request for Qualifications for Architects and Construction Managers will be advertised Fall 2024.



Schedule

TASK	DUR	% Complete	START	FINISH
Design & Permitting	544	0.00%	January 2025	June 2026
Bidding & Construction	603	0.00%	October 2026	May 2028
Ff&E / Occupancy	84	0.00%	June 2028	August 2028



Financial Summary

Financial Summary

Budget

Contracts

Expenditures

MWSBE

FACILITY	BUDGET	TOTAL COMMITTED	TO BE COMMITTED	PAID TO DATE	MWSBE %
Huntersville Elementary School	\$66,235,904	\$0	\$66,235,904	\$0	



Project Information

Bond Program	2023 Bond
Facility Name	New Middle School 2 North (23)
Address	TBD
Architect	
Construction Manager	
Percent Complete	0%
Occupy On	August 2028

Scope of Work

Baseline 54-classroom facility at Stumptown Road to relieve Bailey Road MS, Davidson K-8, and J.M. Alexander MS.

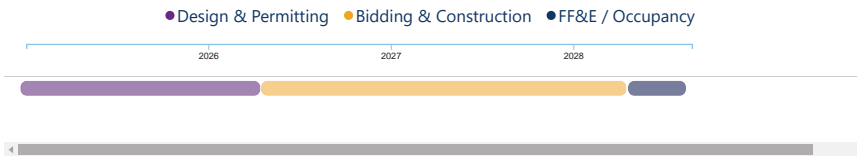
Project Status

Due diligence activities are underway. Request for Qualifications for Architects and Construction Managers will be advertised Fall 2024.



Schedule

TASK	DUR	% Complete	START	FINISH
Design & Permitting	480	0.00%	January 2025	April 2026
Bidding & Construction	731	0.00%	April 2026	April 2028
Ff&E / Occupancy	116	0.00%	May 2028	August 2028



Financial Summary

Financial Summary

Budget

Contracts

Expenditures

MWSBE

FACILITY	BUDGET	TOTAL COMMITTED	TO BE COMMITTED	PAID TO DATE	MWSBE %
New Middle School #2 North	\$92,371,482	\$0	\$92,371,482	\$0	

PROCUREMENT

**UPCOMING MAJOR CONSTRUCTION
PROCUREMENT DATES**
Three-Month Look Ahead

School Name

Bid Period*

New Second Ward High School - Old Metro Demo
Managed by CM (Rodgers Davis)

July 25 – August 13

New Middle School 1 South – Electrical Equipment
Managed by CM (Messer Construction)

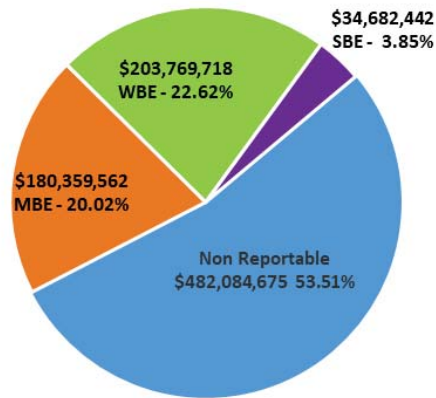
August – September

** NOTE: Work In Progress...Dates Subject to Change.*

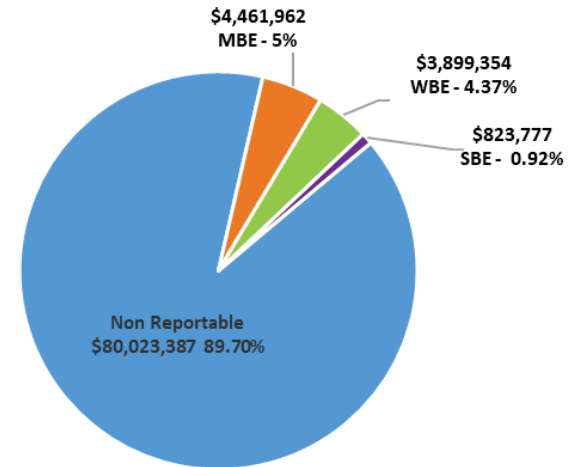
MWSBE

MWSBE

The MWSBE utilization related to design and construction of the **2017** bond projects is **46.49%** of which includes 20.02% (\$180,359,562) participation by minority contractors, 22.62% (\$203,769,718) by women contractors and 3.85% (\$34,682,442) participation by small business contractors. This accounts for more than \$418 million of utilization by Minority, Women and Small Business Contractors.



The MWSBE utilization related to design and construction of the **2023** bond projects is **10.30%** of which includes 5% (\$4,461,962) participation by minority contractors, 4.37% (\$3,899,354) by women contractors and 0.92% (\$823,777) participation by small business contractors. This accounts for more than \$9 million of utilization by Minority, Women and Small Business Contractors.



The Diversity & Inclusion Office of Charlotte-Mecklenburg Schools continued to conduct several individual virtual orientations with new MWSBE contractors and prime contractors. Team members also attended/hosted the following outreach sessions/pre-bid meetings and/or workforce development opportunities:

Outreach Sessions

- New Middle School #1 Pre-Qualification Outreach hosted by Messer Construction
- AAA Building Pre-Con Meeting
- Knights View ES – OAC Meeting
- Bruns Academy – OAC Meeting
- Ballantyne Ridge HS – OAC Meeting

NC MWBE Coordinators’ Network Quarterly Meeting

Charlotte-Mecklenburg Schools shared best practices on race neutral programs. Information shared also included purpose of disparity studies, building an effective MWSBE program, monitoring and reporting, lessons learned and forecasting.

Workforce Development Opportunities:

CMS Office of Diversity & Inclusion and Capital Program Services hosted five (5) CMS student summer interns through the Mayor’s Youth Employment Program (MYEP). The interns participated in virtual and in-person meetings with CMS Executive Staff and department leaders related to their areas of interest. The interns toured Bruns Academy, Ballantyne Ridge High School, Northwest School of the Arts and Sedgefield Elementary School with the CMS project team members to understand how design and building impacts student experiences and outcomes. Special thank you to ADW Architects, City of Charlotte Planning Department, Metcon, Messer Construction, Neighboring Concepts and Optima Engineering for facilitating office tours and experiential learning opportunities. The interns completed a special project that required research and collaboration to identify window blind options to increase student safety. The student interns also participated in relevant on-line coursework through LinkedIn Learning.

Over the next month, team members will continue to work with contractors interested in bidding on the upcoming school projects utilizing various virtual tools to communicate. Contractors are encouraged to review bid advertisements in Charlotte Observer and register as a vendor on the North Carolina electronic Vendor Portal (eVP) for notification of the various opportunities.

MWSBE Participation Commitments - Design and Construction

Charlotte-Mecklenburg Schools

2017 Bond

July 2024 Monthly Bond Report

Facility	Contract Amount	African American MBE\$	%	Other MBE \$	%	Total MBE \$	%	Other WBE \$	%	Other SBE \$	%	Total	%
<u>Ballantyne Ridge High School (17)</u>	\$134,405,715	\$3,179,188	2.37%	\$5,824,207	4.33%	\$9,003,395	6.70%	\$7,168,523	5.33%	\$10,070,403	7.49%	\$26,242,322	19.52%
<u>Briarwood Elementary School (17)</u>	\$28,327,548	\$4,038,457	14.26%	\$2,135,619	7.54%	\$6,174,076	21.80%	\$2,187,249	7.72%	\$187,102	0.66%	\$8,548,427	30.18%
<u>Bruns Avenue Elementary School (17)</u>	\$44,600,106	\$3,967,408	8.90%	\$3,759,285	8.43%	\$7,726,693	17.32%	\$4,812,747	10.79%	\$2,312,654	5.19%	\$14,852,094	33.30%
<u>Career and Technology Education (17)</u>	\$6,832,606	\$525,995	7.70%	\$332,511	4.87%	\$858,506	12.56%	\$221,655	3.24%	\$65,475	0.96%	\$1,145,636	16.77%
<u>Charlotte-Mecklenburg Academy (17)</u>	\$16,883,930	\$198,536	1.18%	\$1,031,692	6.11%	\$1,230,228	7.29%	\$928,655	5.50%	\$13,200	0.08%	\$2,172,083	12.86%
<u>Collinswood Language Academy (17)</u>	\$38,527,704	\$650,587	1.69%	\$1,613,104	4.19%	\$2,263,691	5.88%	\$11,363,565	29.49%	\$8,328	0.02%	\$13,635,584	35.39%
<u>E.E. Waddell (17)</u>	\$2,163,815	\$53,893	2.49%	\$0	0.00%	\$53,893	2.49%	\$69,124	3.19%	\$0	0.00%	\$123,017	5.69%
<u>East Mecklenburg High School (17)</u>	\$12,642,198	\$603,811	4.78%	\$532,460	4.21%	\$1,136,271	8.99%	\$490,364	3.88%	\$681,075	5.39%	\$2,307,710	18.25%
<u>Esperanza Global Academy (17)</u>	\$39,417,596	\$9,379,551	23.80%	\$3,700,782	9.39%	\$13,080,333	33.18%	\$24,752,286	62.80%	\$1,513,957	3.84%	\$39,346,575	99.82%
<u>Garinger High School (17)</u>	\$3,114,094	\$110,106	3.54%	\$363,897	11.69%	\$474,003	15.22%	\$498,134	16.00%	\$251,932	8.09%	\$1,224,069	39.31%
<u>Grove Park Elementary School (17)</u>	\$38,471,424	\$4,897,634	12.73%	\$5,192,018	13.50%	\$10,089,653	26.23%	\$2,302,300	5.98%	\$49,132	0.13%	\$12,441,085	32.34%
<u>Harding High School (17)</u>	\$13,015,986	\$1,504,505	11.56%	\$309,667	2.38%	\$1,814,172	13.94%	\$4,050,417	31.12%	\$36,861	0.28%	\$5,901,449	45.34%
<u>JT Williams (17)</u>	\$15,290,300	\$740,160	4.84%	\$379,844	2.48%	\$1,120,004	7.32%	\$3,832,205	25.06%	\$51,800	0.34%	\$5,004,009	32.73%
<u>Knights View Elementary School (17)</u>	\$45,420,860	\$5,880,253	12.95%	\$1,770,289	3.90%	\$7,650,542	16.84%	\$10,854,671	23.90%	\$2,563,223	5.64%	\$21,068,436	46.38%
<u>Lansdowne Elementary School (17)</u>	\$30,688,137	\$2,890,574	9.42%	\$882,139	2.87%	\$3,772,713	12.29%	\$2,490,921	8.12%	\$1,973,431	6.43%	\$8,237,065	26.84%
<u>Lincoln Heights Elementary School (17)</u>	\$2,848,656	\$318,959	11.20%	\$18,800	0.66%	\$337,759	11.86%	\$64,894	2.28%	\$73,077	2.57%	\$475,730	16.70%
<u>Mint Hill Elementary School (17)</u>	\$25,946,007	\$5,223,675	20.13%	\$17,791,909	68.57%	\$23,015,584	88.71%	\$1,192,408	4.60%	\$308,370	1.19%	\$24,516,362	94.49%
<u>Montclair Elementary School (17)</u>	\$26,093,784	\$3,593,852	13.77%	\$2,341,048	8.97%	\$5,934,900	22.74%	\$5,775,745	22.13%	\$493,707	1.89%	\$12,204,352	46.77%
<u>Mountain Island Lake Academy (17)</u>	\$11,714,739	\$153,353	1.31%	\$750,124	6.40%	\$903,478	7.71%	\$927,916	7.92%	\$15,300	0.13%	\$1,846,694	15.76%
<u>North Academy of World Languages (17)</u>	\$38,354,285	\$1,770,068	4.62%	\$1,575,864	4.11%	\$3,345,931	8.72%	\$4,231,632	11.03%	\$436,793	1.14%	\$8,014,357	20.90%
<u>Northwest School of the Arts (17)</u>	\$9,077,730	\$1,057,042	11.64%	\$309,525	3.41%	\$1,366,567	15.05%	\$2,683,644	29.56%	\$83,077	0.92%	\$4,133,288	45.53%
<u>Palisades High School (17)</u>	\$97,241,537	\$13,482,757	13.87%	\$7,641,104	7.86%	\$21,123,862	21.72%	\$8,317,153	8.55%	\$7,698,589	7.92%	\$37,139,603	38.19%
<u>Shamrock Gardens Elementary School (17)</u>	\$27,133,018	\$2,478,054	9.13%	\$1,636,383	6.03%	\$4,114,438	15.16%	\$21,128,435	77.87%	\$259,554	0.96%	\$25,502,427	93.99%
<u>Sharon Elementary School (17)</u>	\$8,534,491	\$438,383	5.14%	\$283,497	3.32%	\$721,880	8.46%	\$926,873	10.86%	\$106,444	1.25%	\$1,755,197	20.57%

Facility	Contract Amount	African American MBE\$	%	Other MBE \$	%	Total MBE \$	%	Other WBE \$	%	Other SBE \$	%	Total	%
<u>South Academy of International Lang</u>	\$37,153,679	\$6,023,142	16.21%	\$2,431,071	6.54%	\$8,454,213	22.75%	\$10,945,346	29.46%	\$313,999	0.85%	\$19,713,558	53.06%
<u>South Mecklenburg High School (17)</u>	\$15,584,699	\$2,252,188	14.45%	\$1,943,517	12.47%	\$4,195,705	26.92%	\$313,542	2.01%	\$82,420	0.53%	\$4,591,667	29.46%
<u>South Pine Academy (17)</u>	\$26,196,854	\$916,165	3.50%	\$19,052,520	72.73%	\$19,968,685	76.23%	\$4,342,256	16.58%	\$237,754	0.91%	\$24,548,695	93.71%
<u>West Charlotte High School (17)</u>	\$95,404,334	\$14,375,961	15.07%	\$5,259,216	5.51%	\$19,635,176	20.58%	\$65,642,051	68.80%	\$3,740,639	3.92%	\$89,017,866	93.31%
<u>West Mecklenburg High School (17)</u>	\$9,810,566	\$283,809	2.89%	\$509,403	5.19%	\$793,212	8.09%	\$1,255,006	12.79%	\$1,054,146	10.75%	\$3,102,365	31.62%
Grandtotal	\$900,896,396	\$90,988,065	10.10%	\$89,371,497	9.92%	\$180,359,562	20.02%	\$203,769,718	22.62%	\$34,682,442	3.85%	\$418,811,721	46.49%

MWSBE Participation Commitments - Design and Construction

Charlotte-Mecklenburg Schools

2023 Bond

July 2024 Monthly Bond Report

Facility	Contract Amount	African American MBE\$	%	Other MBE \$	%	Total MBE \$	%	Other WBE \$	%	Other SBE \$	%	Total	%
<u>Cotswold ES/Billingsville (23)</u>	\$3,432,675	\$46,700	1.36%	\$72,200	2.10%	\$118,900	3.46%	\$106,630	3.11%	\$0	0.00%	\$225,530	6.57%
<u>Marie G Davis Montessori Upfit (23)</u>	\$550,166	\$0	0.00%	\$15,000	2.73%	\$15,000	2.73%	\$111,445	20.26%	\$0	0.00%	\$126,445	22.98%
<u>New Middle School 1 South (23)</u>	\$3,660,141	\$17,000	0.46%	\$106,000	2.90%	\$123,000	3.36%	\$102,470	2.80%	\$0	0.00%	\$225,470	6.16%
<u>New Second Ward High School (23)</u>	\$7,822,085	\$0	0.00%	\$113,940	1.46%	\$113,940	1.46%	\$113,915	1.46%	\$650,000	8.31%	\$877,855	11.22%
<u>North Mecklenburg High School Repla</u>	\$9,583,619	\$0	0.00%	\$575,100	6.00%	\$575,100	6.00%	\$52,891	0.55%	\$40,000	0.42%	\$667,991	6.97%
<u>Northwest School of the Arts/First Wa</u>	\$51,211,357	\$1,091,314	2.13%	\$1,501,165	2.93%	\$2,592,479	5.06%	\$2,655,337	5.19%	\$83,077	0.16%	\$5,330,893	10.41%
<u>Park Road ES/Dilworth Latta/Sedgiefie</u>	\$6,432,589	\$656,843	10.21%	\$122,450	1.90%	\$779,293	12.11%	\$310,131	4.82%	\$12,700	0.20%	\$1,102,124	17.13%
<u>South Mecklenburg High School Repla</u>	\$6,515,847	\$49,250	0.76%	\$95,000	1.46%	\$144,250	2.21%	\$446,535	6.85%	\$38,000	0.58%	\$628,785	9.65%
Grandtotal	\$89,208,480	\$1,861,107	2.09%	\$2,600,855	2.92%	\$4,461,962	5.00%	\$3,899,354	4.37%	\$823,777	0.92%	\$9,185,093	10.30%

FINANCIALS

FINANCIALS

Bond Progress Summary

Funding Source and Value		Amount Committed/Pending	Amount Paid to Date	Amount Expended This Period
2017 Bond	\$1,005,473,959	\$977,638,103	\$923,433,395	\$11,243,512
2023 Bond	\$2,500,000,000	\$129,211,319	\$12,184,196	\$3,350,732
Grand Total	\$3,505,473,959	\$1,106,849,422	\$935,617,591	\$14,594,244

Approved Construction or Repair Change Orders*

Funding Source	Project Name	Contractor	Description	Change Order Amount	Revised Contract Value
2017 Bond	Mountain Island Lake Academy (17)	The Whiting-Turner Contracting Company	Final Contract Allowance Reconciliation and BMP Remediation Work	(\$481,358.99)	\$10,976,075.01
2023 Bond	New Middle School 1 South (23)	Messer Construction Company	Additional Preconstruction Site Investigation allowance	\$25,000.00	\$350,000.00

* Not previously presented to the Board of Education for Approval (less than \$90,000)

**CHARLOTTE-MECKLENBURG BOARD OF EDUCATION
2017 BOND SERIES-CAPITAL IMPROVEMENT PROGRAMS
BUDGET STATUS REPORT**

	Original Project Budget	Current Project Budget	Committed Amount	Approved Change Orders	Total Committed	Pending Commitments	To Be Committed	Prev Paid To Date	Paid To Date	Balance To Complete	Monthly Expenditure
	(A)	(B)	(C)	(D)	(E)=(C+D)	(F)	(G)=(B-E-F)	(H)	(I)	(J)=(B-I)	(K)=(I-H)
A. REPLACEMENT & RENOVATIONS											
1 Briarwood Elementary *	\$29,091,619	\$31,136,111	\$4,730,737	\$26,405,374	\$31,136,111	\$0	\$0	\$31,136,111	\$31,136,111	\$0	\$0
2 Bruns Academy Replacement	\$34,207,808	\$48,859,580	\$3,917,620	\$42,528,598	\$46,446,217	\$50,290	\$2,363,073	\$31,430,498	\$33,443,415	\$15,416,165	\$2,012,917
3 Career & Technology Education Upgrades	\$10,101,734	\$6,984,007	\$3,665,419	\$3,318,588	\$6,984,007	\$0	\$0	\$6,984,007	\$6,984,007	\$0	\$0
4 Collinswood K-8 *	\$44,172,540	\$41,401,384	\$4,916,632	\$36,484,752	\$41,401,384	\$0	\$0	\$41,401,384	\$41,401,384	\$0	\$0
5 East Mecklenburg HS	\$12,771,594	\$10,141,268	(\$1,659,510)	\$11,800,778	\$10,141,268	\$0	\$0	\$10,141,268	\$10,141,268	\$0	\$0
6 Garinger HS	\$13,936,979	\$4,204,948	\$674,099	\$3,259,238	\$3,933,337	\$0	\$271,611	\$3,946,199	\$3,946,199	\$258,749	\$0
7 Harding University High *	\$18,330,263	\$13,747,878	\$2,045,267	\$11,702,610	\$13,747,877	\$0	\$0	\$13,747,877	\$13,747,877	\$0	\$0
8 Charlotte-Mecklenburg Academy (FKA -EC Specialty	\$18,957,960	\$17,699,220	\$2,175,504	\$15,523,717	\$17,699,220	\$0	\$0	\$17,699,220	\$17,699,220	\$0	\$0
9 Lansdowne Elementary	\$29,391,270	\$33,554,188	\$3,926,495	\$29,426,290	\$33,352,785	\$0	\$201,403	\$32,674,813	\$32,674,813	\$879,375	\$0
10 Lincoln Heights Elementary	\$3,740,478	\$4,333,830	\$2,876,849	\$806,531	\$3,683,380	\$0	\$650,450	\$3,275,667	\$3,284,682	\$1,049,148	\$9,015
11 Montclair Elementary Replacement *	\$28,559,390	\$28,200,634	\$2,426,761	\$25,773,873	\$28,200,634	\$0	\$0	\$28,200,634	\$28,200,634	\$0	\$0
12 Mountain Island k-8	\$9,218,439	\$13,239,886	\$1,658,934	\$10,899,213	\$12,558,147	\$2,000	\$679,539	\$12,457,598	\$12,457,598	\$782,089	\$0
13 Northwest School of the Arts	\$17,632,202	\$11,417,000	\$5,229,666	\$4,771,424	\$10,001,090	\$2,000	\$1,413,910	\$7,461,927	\$7,917,795	\$3,499,205	\$455,868
14 Shamrock Gardens Elementary *	\$29,890,351	\$29,757,027	\$3,422,159	\$26,334,868	\$29,757,027	\$0	\$0	\$29,757,027	\$29,757,027	\$0	\$0
15 Sharon Elementary	\$7,706,528	\$9,088,894	\$1,430,033	\$7,658,861	\$9,088,894	\$0	\$0	\$9,088,894	\$9,088,894	\$0	\$0
16 South Mecklenburg HS	\$13,352,143	\$17,322,927	\$1,951,782	\$14,220,732	\$16,172,514	\$37,407	\$1,113,007	\$8,390,290	\$9,626,835	\$7,696,092	\$1,236,544
17 E.E. Waddell Magnet HS	\$4,571,709	\$3,770,925	\$2,949,431	\$130,098	\$3,079,529	\$0	\$691,396	\$3,065,863	\$3,065,863	\$705,062	\$0
18 West Charlotte HS Replacement	\$109,977,166	\$103,466,299	\$11,725,381	\$91,687,271	\$103,412,653	\$8,250	\$45,396	\$102,702,343	\$102,702,343	\$763,956	\$0
19 West Mecklenburg HS	\$11,065,440	\$6,260,654	(\$2,370,464)	\$8,631,118	\$6,260,654	\$0	\$0	\$6,260,654	\$6,260,654	\$0	\$0
20 John Taylor Williams	\$13,964,339	\$16,058,504	\$3,535,273	\$12,267,108	\$15,802,381	\$0	\$256,123	\$15,828,031	\$15,828,031	\$230,473	\$0
Total Replacement & Renovations	\$460,639,952	\$450,644,964	\$59,228,067	\$383,631,043	\$442,859,110	\$99,946	\$7,685,908	\$415,650,305	\$419,364,650	\$31,280,314	\$3,714,345
B. RESPONSE TO ENROLLMENT GROWTH											
1 South Academy of International Languages	\$45,359,367	\$40,603,148	\$5,969,503	\$34,633,646	\$40,603,148	\$0	\$0	\$40,603,147	\$40,603,252	\$0	\$105
2 North Academy of World Languages (FKA - New K-8	\$45,359,367	\$41,742,062	\$6,024,166	\$35,717,896	\$41,742,062	\$0	\$0	\$41,742,062	\$41,742,062	\$0	\$0
3 South Pine Academy (FKA - New ES Nations Ford, S	\$29,173,829	\$30,477,421	\$6,883,836	\$23,593,585	\$30,477,421	\$0	\$0	\$30,477,421	\$30,477,421	\$0	\$0
4 Mint Hill Elementary School	\$29,988,332	\$29,026,764	\$3,296,439	\$25,730,325	\$29,026,764	\$0	\$0	\$29,026,764	\$29,026,764	\$0	\$0
5 Esperanza Global Academy (FKA New ES - Windsor	\$30,422,230	\$45,297,022	\$13,325,963	\$31,555,270	\$44,881,233	\$1,200	\$414,589	\$43,956,056	\$43,962,263	\$1,334,759	\$6,208
6 Knights View Elementary School - Elon/Hawk Ridge	\$30,426,712	\$59,997,684	\$9,541,445	\$43,655,239	\$53,196,685	\$0	\$6,800,999	\$47,397,821	\$48,761,207	\$11,236,476	\$1,363,386
7 Grove Park Elementary (FKA New ES - Hidden Valle	\$30,518,345	\$42,890,747	\$6,310,785	\$36,115,060	\$42,425,845	\$2,000	\$462,903	\$41,645,754	\$41,649,792	\$1,240,955	\$4,038
8 Palisades High School	\$109,908,793	\$106,172,644	\$10,856,374	\$95,084,185	\$105,940,559	\$20,042	\$212,043	\$105,868,462	\$105,868,462	\$304,182	\$0
9 Ballantyne Ridge High School	\$110,287,621	\$158,621,503	\$14,495,268	\$131,731,619	\$146,226,887	\$135,200	\$12,259,415	\$115,822,090	\$121,977,521	\$36,643,982	\$6,155,431
Total Response to Enrollment Growth	\$461,444,596	\$554,828,995	\$76,703,779	\$457,816,825	\$534,520,604	\$158,443	\$20,149,949	\$496,539,577	\$504,068,745	\$50,760,250	\$7,529,167
C. CONTINGENCY											
	\$0	\$0	\$0	\$0	\$0	\$0	\$0	\$0	\$0	\$0	\$0
Total Contingency	\$0	\$0	\$0	\$0	\$0	\$0	\$0	\$0	\$0	\$0	\$0

**CHARLOTTE-MECKLENBURG BOARD OF EDUCATION
2017 BOND SERIES-CAPITAL IMPROVEMENT PROGRAMS
BUDGET STATUS REPORT**

	Original Project Budget	Current Project Budget	Committed Amount	Approved Change Orders	Total Committed	Pending Commitments	To Be Committed	Prev Paid To Date	Paid To Date	Balance To Complete	Monthly Expenditure
	(A)	(B)	(C)	(D)	(E)=C+D	(F)	(G)=(B-E-F)	(H)	(I)	(J)=(B-I)	(K)=(I-H)
TOTAL LOCAL BOND PROGRAM	\$922,084,548	\$1,005,473,960	\$135,931,846	\$841,447,867	\$977,379,714	\$258,389	\$27,835,856	\$912,189,883	\$923,433,395	\$82,040,565	\$11,243,512

Original project estimated costs approved by the Board Of Education on July 25, 2017 approved by the voters of Mecklenburg County on November 7, 2017.

*Project included in \$33.2M early funding approved by Board Of Education on August 9, 2016 and Mecklenburg Board of County Commissioners on September 6, 2016. On February 19, 2019 an additional \$8M was approved for New Elementary School - Elon/Hawk Ridge Relief site.

*Current Budget includes an additional \$89.2M to fund increase land and construction costs. The additional funds were approved by the Board of County Commissioners on June 16, 2020.

The New Elementary School - Elon/Hawk Ridge Relief current Budget includes 6.8M for Park and Recreation Project.

Bruns Academy Replacement current budget includes \$1.5M for Park and Recreation Project.

Current Program Budget reflects a reclass of \$7.4M in expenditures to 2007 Bond Program and \$14.4M in expenditures to 2013 Bond Program.

**CHARLOTTE-MECKLENBURG BOARD OF EDUCATION
2023 BOND SERIES-CAPITAL IMPROVEMENT PROGRAMS
BUDGET STATUS REPORT**

	Original Project Budget	Current Project Budget	Committed Amount	Approved Change Orders	Total Committed	Pending Commitments	To Be Committed	Prev Paid To Date	Paid To Date	Balance To Complete	Monthly Expenditure
	(A)	(B)	(C)	(D)	(E)=C+D	(F)	(G)=(B-E-F)	(H)	(I)	(J)=(B-I)	(K)=(I-H)
A. REPLACEMENT & RENOVATIONS											
1 Albemarle Road Middle School	\$97,732,036	\$97,732,036	\$0	\$0	\$0	\$0	\$97,732,036	\$0	\$0	\$97,732,036	\$0
2 Allenbrook Elementary School	\$74,244,220	\$74,244,220	\$0	\$0	\$0	\$0	\$74,244,220	\$0	\$0	\$74,244,220	\$0
3 Berryhill School	\$104,286,451	\$104,286,451	\$0	\$0	\$0	\$0	\$104,286,451	\$0	\$0	\$104,286,451	\$0
4 Beverly Woods Elementary School	\$71,237,700	\$71,237,700	\$0	\$0	\$0	\$0	\$71,237,700	\$0	\$0	\$71,237,700	\$0
5 Cochrane Collegiate Academy/iMeck	\$7,506,657	\$7,506,657	\$0	\$0	\$0	\$0	\$7,506,657	\$0	\$0	\$7,506,657	\$0
6 Cornelius Elementary School	\$76,471,997	\$76,471,997	\$0	\$0	\$0	\$0	\$76,471,997	\$0	\$0	\$76,471,997	\$0
7 Cotswold ES/Billingsville	\$80,555,856	\$80,555,856	\$6,766,553	\$0	\$6,766,553	\$0	\$73,789,303	\$96,426	\$642,675	\$79,913,181	\$546,249
8 Coulwood STEM Academy	\$92,706,982	\$92,706,982	\$0	\$0	\$0	\$0	\$92,706,982	\$0	\$0	\$92,706,982	\$0
9 E.E. Waddell High School	\$1,563,348	\$1,563,348	\$0	\$0	\$0	\$0	\$1,563,348	\$0	\$0	\$1,563,348	\$0
10 East Mecklenburg High School	\$201,339,353	\$201,339,353	\$0	\$0	\$0	\$0	\$201,339,353	\$0	\$0	\$201,339,353	\$0
11 Garinger High School	\$54,905,692	\$54,905,692	\$0	\$0	\$0	\$0	\$54,905,692	\$0	\$0	\$54,905,692	\$0
12 Harding University High School	\$202,879,499	\$202,879,499	\$0	\$0	\$0	\$0	\$202,879,499	\$0	\$0	\$202,879,499	\$0
13 Huntersville Elementary School	\$66,235,904	\$66,235,904	\$0	\$0	\$0	\$0	\$66,235,904	\$0	\$0	\$66,235,904	\$0
14 J.T. Williams	\$1,647,752	\$1,647,752	\$0	\$0	\$0	\$0	\$1,647,752	\$0	\$0	\$1,647,752	\$0
15 Marie G Davis Montessori Upfit	\$9,174,783	\$9,174,783	\$910,783	\$30,500	\$941,283	\$0	\$8,233,500	\$257,820	\$347,795	\$8,826,988	\$89,975
16 Matthews Elementary School	\$79,874,929	\$79,874,929	\$0	\$0	\$0	\$0	\$79,874,929	\$0	\$0	\$79,874,929	\$0
17 North Mecklenburg High School Replacement	\$228,464,171	\$228,464,171	\$19,126,312	(\$39)	\$19,126,273	\$0	\$209,337,898	\$1,510,241	\$1,938,614	\$226,525,557	\$428,373
18 Northwest School of the Arts/First Ward	\$93,654,147	\$93,654,147	\$5,496,729	\$49,711,743	\$55,208,472	\$4,500	\$38,441,175	\$643,110	\$1,340,397	\$92,313,750	\$697,287
19 Park Road ES/Dilworth Latta/Sedgefield	\$89,491,970	\$89,491,970	\$10,574,366	\$752,189	\$11,326,555	\$125,000	\$78,040,415	\$1,732,159	\$2,401,048	\$87,090,922	\$668,889
20 South Charlotte Middle School	\$7,741,099	\$7,741,099	\$0	\$0	\$0	\$0	\$7,741,099	\$0	\$0	\$7,741,099	\$0
21 South Mecklenburg High School Replacement	\$127,909,253	\$127,909,253	\$11,663,631	\$172,677	\$11,836,308	\$12,500	\$116,060,445	\$1,919,531	\$2,435,693	\$125,473,560	\$516,163
22 Steele Creek Elementary School	\$80,830,528	\$80,830,528	\$0	\$0	\$0	\$0	\$80,830,528	\$0	\$0	\$80,830,528	\$0
23 University Park Arts	\$73,119,088	\$73,119,088	\$0	\$0	\$0	\$0	\$73,119,088	\$0	\$0	\$73,119,088	\$0
24 Villa Heights @ Hawthorne	\$6,247,871	\$6,247,871	\$0	\$0	\$0	\$0	\$6,247,871	\$0	\$0	\$6,247,871	\$0
25 West Regional Athletic Complex	\$8,999,792	\$8,999,792	\$0	\$0	\$0	\$0	\$8,999,792	\$0	\$0	\$8,999,792	\$0
26 Wilson STEM Academy	\$92,471,565	\$92,471,565	\$0	\$0	\$0	\$0	\$92,471,565	\$0	\$0	\$92,471,565	\$0
Total Replacement & Renovations	\$2,031,292,643	\$2,031,292,643	\$54,538,375	\$50,667,070	\$105,205,445	\$142,000	\$1,925,945,198	\$6,159,288	\$9,106,223	\$2,022,186,420	\$2,946,936
B. RESPONSE TO ENROLLMENT GROWTH											
1 New Middle School #2 North	\$92,371,482	\$92,371,482	\$0	\$0	\$0	\$0	\$92,371,482	\$0	\$0	\$92,371,482	\$0
2 New Middle School #3 Southwest	\$98,436,153	\$98,436,153	\$0	\$0	\$0	\$0	\$98,436,153	\$0	\$0	\$98,436,153	\$0
3 New Second Ward High School	\$176,810,460	\$176,810,460	\$15,859,769	\$0	\$15,859,769	\$0	\$160,950,691	\$936,668	\$1,152,668	\$175,657,792	\$216,000
4 New Middle School #1 South	\$101,089,262	\$101,089,262	\$7,833,545	\$25,000	\$7,858,545	\$145,560	\$93,085,157	\$1,737,509	\$1,925,305	\$99,163,957	\$187,797
Total Response to Enrollment Growth	\$468,707,357	\$468,707,357	\$23,693,314	\$25,000	\$23,718,314	\$145,560	\$444,843,483	\$2,674,177	\$3,077,973	\$465,629,384	\$403,797
	\$2,500,000,000	\$2,500,000,000	\$78,231,689	\$50,692,070	\$128,923,759	\$287,560	\$2,370,788,681	\$8,833,464	\$12,184,196	\$2,487,815,804	\$3,350,732

Original Budget Projects were approved by the Board of County Commissioners on June 6, 2023 and by the voters of Mecklenburg County on November 7, 2023.

WEBSITE / SOCIAL MEDIA

BOND WEBSITE / SOCIAL MEDIA

Bond Construction Website

www.cmsbondconstruction.com

Linktree

<https://linktr.ee/cmsbondinfo>

Facebook

<https://www.facebook.com/cmsbond>

Twitter

<https://twitter.com/CMSbondinfo>

YouTube

<https://www.youtube.com/@cmsbondinfo>

Instagram

<https://www.instagram.com/cmsbondinfo>

For more information, email cmsbond@cms.k12.nc.us