

Capital Improvement Program

Monthly Bond Report
December 2023



Ballantyne Ridge High School



CAPITAL PROGRAM SERVICES Capital Improvement Program

DECEMBER 2023 **MONTHLY BOND REPORT**

PROGRAM OVERVIEW

- Project Management
- Design and Bidding
- Controls
- MWSBE
- Bond Progress Summary
- Project Procurement - Next 90 Days
- Bond Summary Schedule
- Project Contractor Teams; Projects in Design/Construction and Substantially Completed/Closed
- School Site Location Maps
 - Elementary Schools
 - Middle Schools
 - High Schools & Specialty Schools

PROJECT STATUS REPORT

MWSBE PARTICIPATION REPORT

PROJECT PROGRESS PHOTOS

PROJECT CONTROLS

- Budget Summary Reports
 - 2013 Bond Series
 - 2017 Bond Series
 - 2023 Bond Series
- Change Orders < \$90,000
- Expenditure Summary

GLOSSARY

PROGRAM OVERVIEW

PROJECT MANAGEMENT

The following is a summary of the activity on the bond-funded projects in construction during the month of December.

The **Bruns Avenue Elementary School Replacement** construction manager continues to work toward having the building enclosed. Temporary measures are being installed throughout the buildings windows and storefront systems. The mason continues to wrap the building with through wall flashing, spray foam insulation and brick veneer. Interior MEP trades continue with above ceiling and in wall rough in throughout. Metal stud and drywall installation have progressed well. The main electrical and mechanical room's equipment installations advanced well over the last month with the boilers and four AHU's being installed. The project team continues to monitor the delayed delivery of the other two AHU's and is working on a contingency plan. Scheduled occupancy is August 2024. The demolition of the old building and associated site work will commence once the new building is occupied.

The **New Ballantyne Ridge High School** (*fka New High School (South, Ardrey Relief)*) construction manager continued coordinating the numerous trades on site. The mason continued with interior CMU and brick veneer installation throughout the building. Spray fireproofing continued on the fourth floor of the classroom wing. Interior metal stud installations continued in the classroom wing. Drywall installations continued on the first floor throughout the building and started on the second. The MEP trades continued with following the interior studs within wall and above ceiling rough in. The athletic surfaces on the main and practice fields are in place with the stripping and numbering being cut in. The site work contractor continued with final grading, roadwork, the remaining site walls, and installation of the bottomless culvert. The landscaper has mobilized and began the installation of trees. The team continues to work with Charlotte Water and Duke Power to facilitate permanent power to the building. The new 100-classroom relief high school scheduled occupancy is August 2024.

The **New Elementary School (Elon, Hawk Ridge, Polo Relief)** construction manager continues to manage multiple trades on the project. Mechanical, electrical and plumbing (MEP) trades continue work with above ceiling and in wall rough in throughout the building. The painter progressed well in all areas of the building followed by casework, marker boards and toilet partition installations. Installation of sod and plating progressed well in preparations for the detention pond conversion. Ardrey Kell Road improvements progressed with installation of the road widening asphalt subbase along with modifications being made to the Ardrey Kell High School entrance to accommodate the installation of the traffic signals. The construction manager continues to utilize temporary conditioning of the throughout the building while waiting on Duke to energize the building. Air Handler 5 continues to be delayed and is expected to be delivered mid-February. The new 45-classroom elementary school is located across from the Ardrey Kell High School and scheduled occupancy is August 2024.

The **Northwest School of the Arts** construction manager continued with the Phase 1 parking lot. The asphalt surface coat and stripping was installed. The site light poles were energized and are being adjusted. The landscaper is to mobilize the beginning of January to being installations of planting and grassing. The Phase 1 scope includes an underground storm water detention system and new car parking lot in preparation for the new building in Phase 2.

The **South Mecklenburg High School** construction manager has continued work on underground storm water piping. The building footings have been staked and excavation is underway. The utilities to support the new building are also being installed. The architect and engineers have reviewed submittals for the project. The new 19-classroom building will house JROTC and Arts. The new classroom wing is scheduled for occupancy January 2025.

DESIGN AND BIDDING

The following is a summary of the activity on the bond-funded projects in design and bidding phase during the month of December.

The designer agreement for the **Cotswold Elementary Replacement School** was finalized. The due diligence and pre-design activities including survey and soil borings continue to progress. The design kick off and leadership meetings will be scheduled first quarter 2024.

The designer agreement for the **Marie G. Davis Montessori Upfit** was finalized and purchase order issued. Due diligence activities, building walk throughs have occurred and the schematic design has commenced. The CMS leadership meetings will begin in February 2024.

The designer agreement for the **New Second Ward High School** was finalized and purchase order issued. The CMS leadership meetings will begin in January 2024.

The **New South MS #1** architect is coordinating with Capital Program Services and CMS Planning and Real Estate Department to develop the required submittal drawings for the ongoing rezoning process. Schematic phase design documents continue to progress. CMS leadership meeting was held on December 18. The project includes a 54-classroom middle school facility is currently scheduled for occupancy August 2026.

The designer agreement for the **North Mecklenburg High School Replacement** was finalized and purchase order issued. The initial CMS leadership meeting was held in December. The pre-schematic design, site planning, and due diligence activities have commenced.

Northwest School of the Arts/First Ward - The **Northwest School of the Arts** Phase 2 design documents progress through the final reviews of the resubmission of approved drawings with LUESA. The construction manager continues with their subcontractor pre-qualification process and bidder manual development. Phase 2 scope includes a new administration, visual/performing arts building and campus renovations.

The designer agreement for the **First Ward Elementary School Renovations** was finalized and purchase order issued. The due diligence activities continue and schematic design has commenced. The CMS leadership meetings will begin in February 2024.

Park Road ES/Dilworth Latta/Sedgefield - The designer agreement for the **New Park Road Elementary School** project was finalized and purchase order issued. The design leadership meeting is scheduled in January. The pre-schematic design, site planning, and due diligence activities have commenced.

The designer agreement for the **Sedgefield Elementary School Montessori Upfit** project is finalized. The designer kick-off meeting and leadership meeting was held on December 18. The schematic design, planning, and due diligence activities have commenced.

The **South Mecklenburg High School Replacement** project continues with the development of its pre-schematic submission. The CMS leadership meeting is scheduled for January 5, 2024.

CONTROLS

Expenditures for the month of December were \$13.0M. This brings our fiscal year to date total to \$92.1M against the 2024 fiscal year cash flow projection of \$165M. The Controls team continues the reconciliation and closeout of completed 2017 bond projects. Completed purchase orders are being closed out. Available funding identified from completed purchase orders are being accumulated to be used for future capital needs.

The Controls team continues to submit notices of potential changes at school sites so senior staff can adequately evaluate any issues. Additionally, the Controls team continues the processing of contracts, invoices, preparing notices of potential change, change orders, pay applications, and check requests for projects under construction. Captured construction cost data is used to prepare financial reports such as detailed cost reports, budget summaries, reconciliation to CMS books, revisions to and updated cash flows and complete special financial requests by CMS and Mecklenburg County. This process, along with data compilation and management, allows senior staff to provide the proper guidance/direction and accurate information to the program.

No Bond related consent items were submitted for Board of Education approval during the month of December.

MWSBE

As of December 2023, the overall MWSBE utilization percentage related to design and construction of the 2017 bond projects is 45.33% which includes 19.30% participation by minority contractors, 22.47% by women contractors and 3.57% participation by small business contractors. This accounts for more than \$408 million of utilization by Minority, Women and Small Business Contractors.

The Diversity & Inclusion Office of Charlotte-Mecklenburg Schools continued to conduct several individual virtual orientations with new MWSBE contractors and prime contractors. In addition, team members also attended/hosted the following outreach sessions/pre-bid meetings and/or workforce development opportunities:

Outreach Sessions:

- Supplier Diversity Roundtable
- HCAC Holiday Outreach
- MMCA Holiday Outreach
- Pre-Submittal Conference – Program Management Services
- Mecklenburg County Business Launch Pad Graduation

Workforce Development Opportunities:

The CMS Career & Technical Education (CTE) office has created nineteen (19) career pathways to allow students to explore career interests. CTE students are given the opportunity to receive industry-recognized certifications, earn credit towards postsecondary degrees or begin careers after graduation. For CMS to deliver a diverse and inclusive workforce to meet the growing needs in the community, opportunities for our future workforce is needed. Historically, CMS has partnered with the City of Charlotte Mayor's Youth Employment Program (MYEP) to provide career and professional development experiences for our students. .

As a part of our CMS Workforce Development Program, CMS student internships, shadowing learning opportunities and participation in career fairs are a key component of exposing students to relevant real life career experiences. CMS and our contracted parties are working with the City of Charlotte Mayor's Youth Employment Program (MYEP) Youth Program Specialist, to assist in matching students with internship opportunities.

Over the next month, team members will continue to work with contractors interested in bidding on the upcoming school projects utilizing various virtual tools to communicate. Contractors are encouraged to review bid advertisements in Charlotte Observer and register as a vendor on the North Carolina electronic Vendor Portal (eVP) for notification of the various opportunities.

BOND PROGRESS SUMMARY As of December 2023

Funding Source and Value		Amount Committed/Pending	Amount Paid to Date	Amount Expended This Period
'13 Bond	\$316,067,527	\$316,031,257	\$316,031,257	\$0
'17 Bond	\$1,005,473,959	\$988,976,917	\$862,558,814	\$12,615,953
'23 Bond	\$907,149,902	\$73,331,507	\$722,413	\$348,014
Grand Total	\$2,228,691,388	\$1,378,339,681	\$1,179,312,479	\$12,963,967

UPCOMING MAJOR CONSTRUCTION PROCUREMENT DATES *Three-Month Look Ahead*

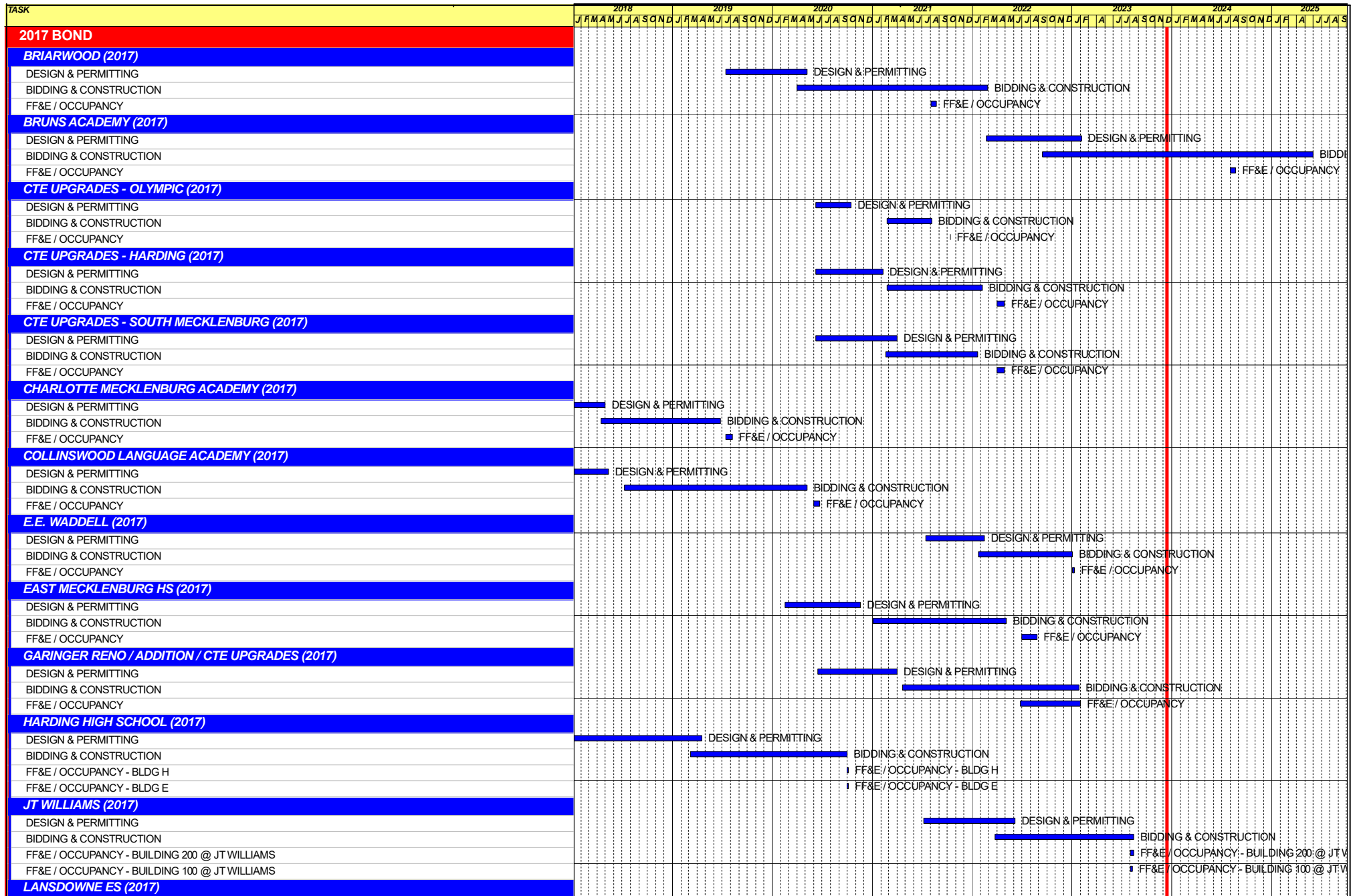
School Name

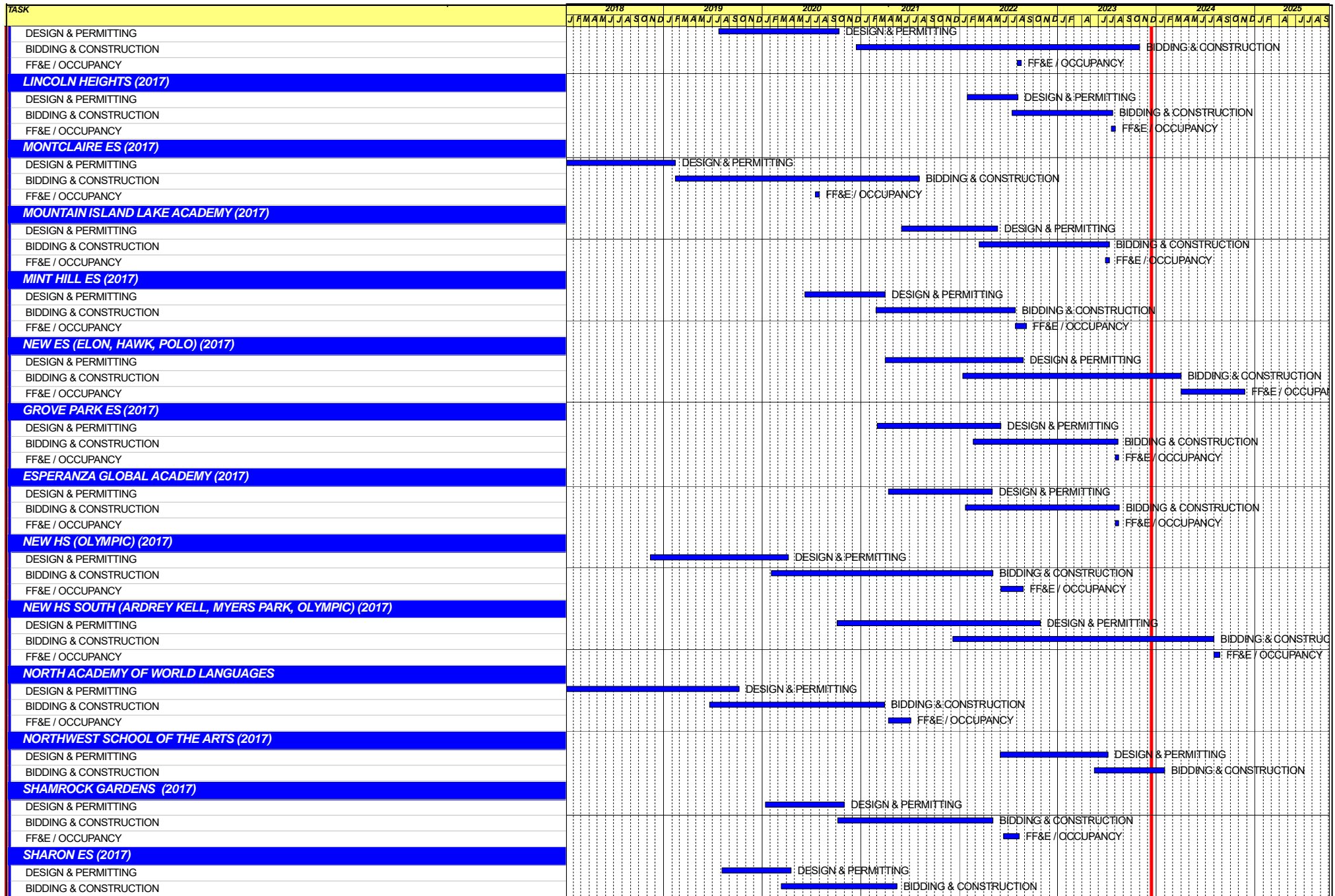
Northwest School of the Arts
Managed by CM (Balfour Beatty)

Bid Period*

February 12 – March 14

** NOTE: Work In Progress...Dates Subject to Change.*





Capital Improvements Program
Projects in Design or Under Construction

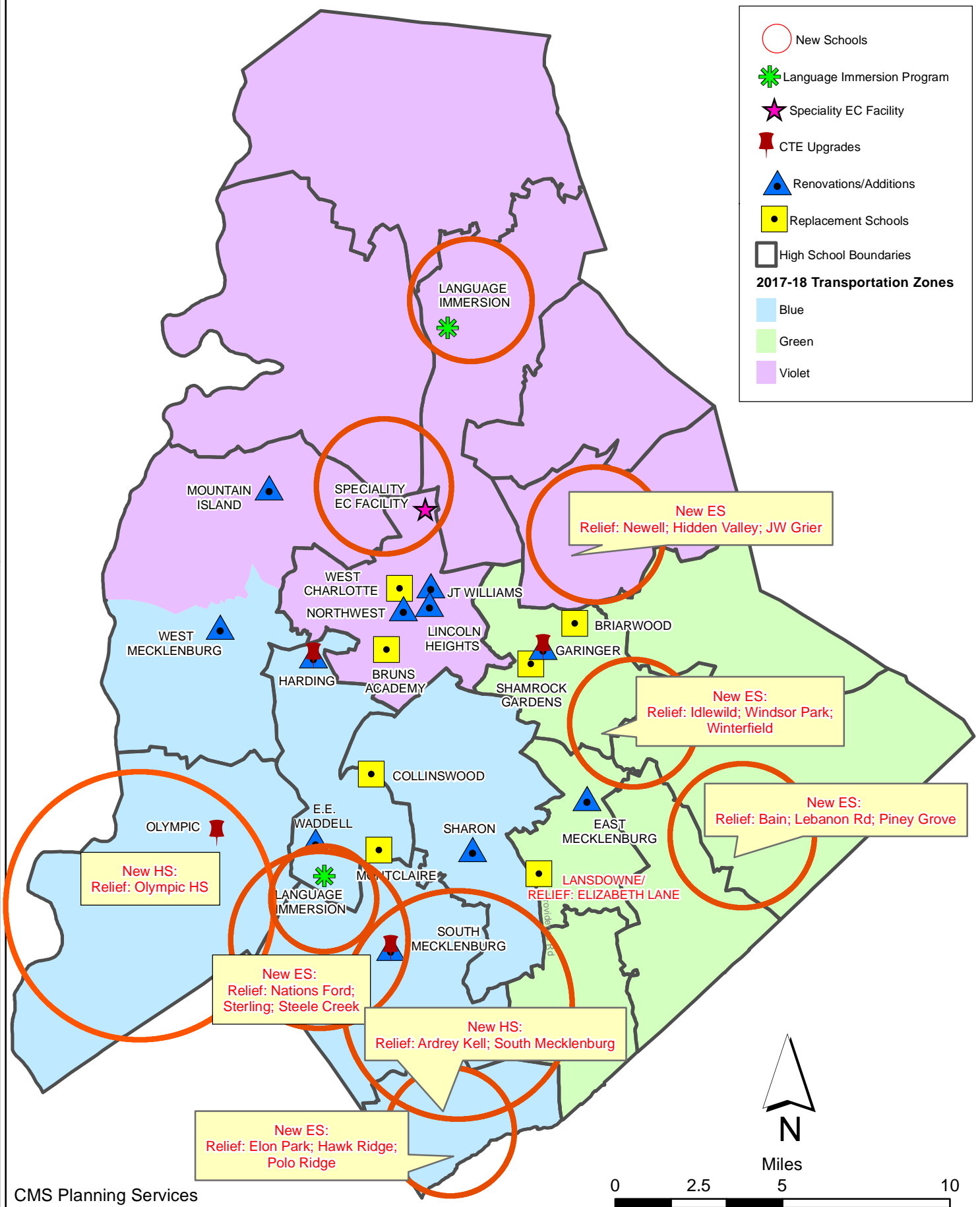
School	Architect	General Contractor/CM
Projects In Design		
Cotswold /Billingsville		
Cotswold Elementary Replacement School (23)	Little Diversified	Turner/DA Everett JV
Northwest School of the Arts/First Ward		
Northwest School of the Arts Renovation/Addition (17 & 23)	LS3P	Balfour Beatty
First Ward Elementary School Renovations (23)	Boomerang	Edifice, Inc.
Marie G. Davis Montessori Upfit (23)	MPS	TBD
New Second Ward High School (23)	LS3P	Rodgers Builders, Inc.
New South MS 1 (23)	HCM	Messer
North Mecklenburg High School Replacement (23)	ADW	New Atlantic
Park Road ES/Dilworth Latta/Sedgefield		
Park Road Elementary School (23)	Ratio	Vannoy-McFarland
Sedgefield Elementary School Montessori Upfit (23)	WHN	Vannoy-McFarland
South Mecklenburg High School Replacement (23)	Morris Berg	Whiting-Turner
Projects in Bid/Award/Construction Phase		
Ballantyne Ridge HS (17)	Ratio	Messer
New ES (Elon,Hawk Ridge, Polo Ridge) (17)	Little Diversified	Balfour Beatty
New Bruns Avenue ES (17)	ADW	Edifice, Inc.
Northwest School of the Arts Addition (17)	LS3P	Balfour Beatty
South Mecklenburg High School Addition (17)	Morris Berg	Balfour Beatty

Capital Improvements Program
Projects Substantially Completed/Closed *

School	Turnover Year	Architect	General Contractor
J.T. Williams (17)	Aug-23	FWA	New Atlantic Contracting
Lincoln Heights Repurpose (17)	Aug-23	Neighboring Concepts	Randolph & Sons
Mountain Island School (17)	Aug-23	ADW	Whiting-Turner
Grove Park ES (17)	Aug-23	ADW	Edifice, Inc.
Esperanza Global Academy (17)	Aug-23	Neighboring Concepts	Rodgers-Holt Brothers
E.E. Waddell (17)	Jan-23	Moseley	Randolph & Sons Builders
Garinger Addition/Renovation & CTE (17)	Jan-23	LS3P	Balfour Beatty
West Charlotte High School (17)	Aug-22	LS3P	Rodgers-Holt Brothers
Lansdowne Elementary School Replacement (17)	Aug-22	Perkins Eastman	Edifice, Inc.
Palisades High School (Olympic Relief) (17)	Aug-22	Little Diversified	Edifice, Inc.
Shamrock Gardens Elementary School Replacement (17)	Aug-22	Little Diversified	Rodgers-Holt Brothers
Mint Hill ES (17) <i>(fka Bain, Lebanon Rd, Piney Grove)</i>	Aug-22	FWA	Metcon
East Mecklenburg High School (17)	May-22	Morris Berg	Turner Construction
CTE (Harding, Olympic, South) (17)	Jan-22	MPS	Branch Brownstone
Briarwood Elementary School Replacement (17)	Aug-21	ADW	New Atlantic Contracting
North Academy of World Languages (17)	Aug-21	ADW	New Atlantic Contracting
Sharon Elementary School (17)	Aug-21	Clark Nexsen	Samet
South Academy of International Languages (17)	Aug-21	FWA	Messer Construction
South Pine Academy (17)	Aug-21	FWA	Metcon
West Mecklenburg Gym (17)	Aug-21	Moseley	Barnhill/D.A. Everett
Montclair Elementary School (17)	Aug-20	WHN	Messer Construction
Collinswood Language Academy (17)	Aug-20	Perkins Eastman	Turner Construction
Harding High School Renovation (17)	Aug-20	SFLA	Barnhill Contracting
Rea Farms STEAM Academy (13)	Aug-20	Little Diversified	Balfour Beatty
Ashley Park K-8 Conversion (13)	Aug-19	ADW	Turner Construction
Druid Hills K-8 Conversion (13)	Aug-19	ADW	Edifice, Inc.
Selwyn Elementary (13)	Aug-19	Clark Nexsen	Balfour Beatty
Charlotte Mecklenburg Academy (17)	Aug-19	KSQ	Edifice, Inc.
Davidson K-8 (13)	Aug-19	Little Diversified	Gilbane
CTE - North Mecklenburg High (13)	Aug-19	LS3P	Shiel Sexton
CTE - Garinger (13)	Mar-19	LS3P	Hostetter & Son
CTE - Independence (13)	Mar-19	LS3P	D.E. Brown
CTE - West Mecklenburg (13)	Mar-19	LS3P	Hostetter & Son
Charlotte East Language Academy (13)	Aug-18	Morris Berg	Edifice, Inc.
Myers Park High School Phase 3 (13)	Aug-18	Boomerang Design	BE&K
Northridge Middle (13)	Aug-18	Morris Berg	Barnhill Contracting
Myers Park High Bldg 2 (13)	Feb-18	Boomerang Design	BE&K
East Mecklenburg High Addition (13)	Jan-18	Bergman (fna Gantt Huberman)	Edifice, Inc.
J.M. Alexander Middle (13)	Aug-17	FWA Group	Balfour Beatty
Northwest School of the Arts Renovation (13)	Aug-17	Moseley	Turner Construction
Renaissance West STEAM Academy (13)	Aug-17	Little Diversified	Rodgers Construction
South Mecklenburg High Addition (13)	Jul-17	SFLA	Barnhill Contracting
Myers Park High Bldg 1 (13)	Sep-16	Boomerang	KBR
Statesville Road Elementary (13)	Aug-16	ADW	JE Dunn
Nations Ford Elementary (13)	Aug-16	Wash Hatem Nelson	Messer Construction
Olympic High Addition (13)	Aug-16	McMillan, Pazdan, Smith	Turner Construction
Lawrence Orr Elementary (07)	Aug-15	Cort Architectural Group	DH Griffin/Metcon
Parkside Elementary (07)	Aug-15	Wash Hatem Nelson	Clancy & Theys
Hawthorne High Renovations (07)	Aug-15	Morris-Berg	Balfour Beatty
Newell Elementary (07)	Aug-15	Perkins Eastman	New Atlantic Contracting
Ranson Middle (07)	Aug-15	Morris-Berg	Edifice, Inc.
Vance High	Jan-15	LS3P	Matthews Construction Co., Inc.

Projects closed prior to 2015 are not shown

CMS Capital Improvement Plan 2017 Bond Projects



PROJECT STATUS REPORT



Monthly Project Status

2017 and 2023 Early Projects Bond Summary

December 2023

Project	Current Project Estimate	Project Scope	** Occupy On	Design Phase	Construction Progress	Project Status
Ballantyne Ridge High School (17)	\$ 148,962,116	New 100 classroom high school to relieve South Mecklenburg, Ardrey Kell and Myers Park HS.	August 2024	Complete	77 %	The New Ballantyne Ridge High School (fka New High School (South, Ardrey Relief) construction manager continued coordinating the numerous trades on site. The mason continued with interior CMU and brick veneer installation throughout the building. Spray fireproofing continued on the fourth floor of the classroom wing. Interior metal stud installations continued in the classroom wing. Drywall installations continued on the first floor throughout the building and started on the second. The MEP trades continued with following the interior studs within wall and above ceiling rough in. The athletic surfaces on the main and practice fields are in place with the stripping and numbering being cut in. The site work contractor continued with final grading, roadwork, the remaining site walls, and installation of the bottomless culvert. The landscaper has mobilized and began the installation of trees. The team continues to work with Charlotte Water and Duke Power to facilitate permanent power to the building.
Briarwood Elementary School (17)	\$ 31,243,066	45-classroom replacement facility; replaces school built in 1956.	August 2021	Complete	100 %	Project is complete.

Monthly Project Status

2017 and 2023 Early

December 2023

Projects Bond Summary

Project	Current Project Estimate	Project Scope	** Occupy On	Design Phase	Construction Progress	Project Status
Bruns Avenue Elementary School (17)	\$ 48,859,580	New 45-classroom elementary school (K-5); replaces old school built in 1969.	August 2024	Complete	59 %	The Bruns Avenue Elementary School Replacement construction manager continues to work toward having the building enclosed. Temporary measures are being installed throughout the buildings windows and storefront systems. The mason continues to wrap the building with through wall flashing, spray foam insulation and brick veneer. Interior MEP trades continue with above ceiling and in wall rough-in throughout. Metal stud and drywall installation have progressed well. The main electrical and mechanical room's equipment installations advanced well over the last month with the boilers and four AHU's being installed. The project team continues to monitor the delayed delivery of the other two AHU's and is working on a contingency plan. The demolition of the old building and associated site work will commence once the new building is occupied.
Career and Technology Education (17)	\$ 6,984,007	Phase I CTE upgrades at Olympic, Harding, Garinger and South Mecklenburg.	January 2022	Complete	100 %	Project is complete.
Charlotte-Mecklenburg Academy (17)	\$ 17,699,220	New EC school located on the old Statesville Elementary School site.	August 2019	Complete	100 %	Project is complete.
Collinswood Language Academy (17)	\$ 41,401,384	New 63-classroom K-8 facility on the site of the Smith Family Center.	August 2020	Complete	100 %	Project is complete.
Cotswold ES/Billingsville (23)	\$ 80,555,856	Onsite replacement of Cotswold ES, collapsing paired school into Billingsville for project duration; repurpose Billingsville for relocated Montessori PK-6 program; demolish Chantilly.		Pre-Design	0 %	The designer agreement for the Cotswold Elementary Replacement School was finalized. The due diligence and pre-design activities including survey and soil borings continue to progress. The design kick off and leadership meetings will be scheduled first quarter 2024.
E.E. Waddell (17)	\$ 5,137,367	Repurpose current E.E. Waddell to reopen as a magnet high school.	August 2023	Complete	100 %	Project is complete.
East Mecklenburg High School (17)	\$ 10,231,911	This project will provide for the design, and construction of a new 30 classroom building.	August 2022	Complete	100 %	Project is complete.

Monthly Project Status

2017 and 2023 Early

December 2023

Projects Bond Summary

Project	Current Project Estimate	Project Scope	** Occupy On	Design Phase	Construction Progress	Project Status
Esperanza Global Academy (17)	\$ 45,297,022	New 45-classroom elementary school to relieve Windsor, Winterfield, and Idlewild ES.	August 2023	Complete	100 %	The Esperanza Global Academy is in the project closeout and warranty phase.
Garinger High School (17)	\$ 5,236,979	Project includes the design and construction for renovations of 300 building and a new 16 classroom building.	January 2023	Complete	100 %	Project is complete.
Grove Park Elementary School (17)	\$ 44,079,387	New 45-classroom elementary school; relieves overcrowding at Hidden Valley, J.W. Grier, Newell.	August 2023	Complete	100 %	The Grove Park Elementary School is in the project closeout and warranty phase.
Harding High School (17)	\$ 13,747,878	Renovation of the kitchen, cafeteria, existing gym (aux) and the addition of a new gym.	August 2020	Complete	100 %	Project is complete.
JT Williams (17)	\$ 17,032,600	Project includes building renovations to J.T. Williams Montessori magnet.	August 2023	Complete	100 %	The JT Williams Secondary Montessori is in the project closeout and warranty phase.
Lansdowne Elementary School (17)	\$ 33,554,188	New 45-classroom school; replaces old school built in 1959 and relieve crowding at Elizabeth Lane ES.	August 2022	Complete	100 %	Project is complete.
Lincoln Heights Elementary School (17)	\$ 4,588,675	Repurpose and reopen as magnet school.	August 2023	Complete	100 %	The Lincoln Heights Montessori School repurpose project is in the project closeout and warranty phase.
Marie G Davis Montessori Upfit (23)	\$ 9,174,783	Convert to 7-12 Montessori to replace use at J.T. Williams and expand program		Schematic	0 %	The designer agreement for the Marie G. Davis Montessori Upfit was finalized and purchase order issued. Due diligence activities, building walk throughs have occurred and the schematic design has commenced. The CMS leadership meetings will begin in February 2024.
Mint Hill Elementary School (17)	\$ 29,480,274	New 45-classroom elementary school; relieves crowding at Bain, Lebanon Road, Piney Grove.	August 2022	Complete	100 %	Project is complete.
Montclair Elementary School (17)	\$ 28,200,634	New 45-classroom replacement facility replacing school built in 1958.	August 2020	Complete	100 %	Project is complete.
Mountain Island Lake Academy (17)	\$ 13,239,686	K-8 Phase 2 - New gymnasium and specialty classrooms.	August 2023	Complete	100 %	The Mountain Island Lake Academy Gym/Classroom Addition project is in the project closeout and warranty phase.

Monthly Project Status

2017 and 2023 Early

December 2023

Projects Bond Summary

Project	Current Project Estimate	Project Scope	** Occupy On	Design Phase	Construction Progress	Project Status
New Elementary School (Elon, Hawk Ridge, Polo Relief) (17)	\$ 60,641,760	New 45-classroom elementary school to relieve Elon, Hawk Ridge, Polo.	August 2024	Complete	84 %	The New Elementary School (Elon, Hawk Ridge, Polo Relief) construction manager continues to manage multiple trades on the project. Mechanical, electrical and plumbing (MEP) trades continue work with above ceiling and in wall rough in throughout the building. The painter progressed well in all areas of the building followed by casework, marker boards and toilet partition installations. Installation of sod and plating progressed well in preparations for the detention pond conversion. Ardrey Kell Road improvements progressed with installation of the road widening asphalt subbase along with modifications being made to the Ardrey Kell High School entrance to accommodate the installation of the traffic signals. The construction manager continues to utilize temporary conditioning of the throughout the building while waiting on Duke to energize the building. Air Handler 5 continues to be delayed and is expected to be delivered mid-February.
New Second Ward High School (23)	\$ 176,810,460	Full magnet high school on old Metro site; relocate program from Hawthorne site		Pre-Schematic	0 %	The designer agreement for the New Second Ward High School was finalized and purchase order issued. The CMS leadership meetings will begin in January 2024.
New South MS#1 (23)	\$ 101,089,262	Baseline 54 CR Middle School facility to relieve Community House MS, Jay M. Robinson MS, and Rea Farms STEAM K-8		Schematic	0 %	The New South MS #1 architect is coordinating with Capital Program Services and CMS Planning and Real Estate Department to develop the required submittal drawings for the ongoing rezoning process. Schematic phase design documents continue to progress. CMS leadership meeting was held on December 18.
North Academy of World Languages (17)	\$ 41,742,062	New 66 classroom K-8 Language Immersion facility located on the old J.M. Alexander Middle School site.	August 2021	Complete	100 %	Project is complete.
North Mecklenburg High School Replacement (23)	\$ 228,464,171	Onsite replacement of balance of campus and comprehensive athletics package.		Pre-Schematic	0 %	The designer agreement for the North Mecklenburg High School Replacement was finalized and purchase order issued. The initial CMS leadership meeting was held in December. The pre-schematic design, site planning, and due diligence activities have commenced.

Monthly Project Status

2017 and 2023 Early

December 2023

Projects Bond Summary

Project	Current Project Estimate	Project Scope	** Occupy On	Design Phase	Construction Progress	Project Status
Northwest School of the Arts (17)	\$ 12,167,000	Replace classroom buildings B&D and build classroom addition that supports program. 1st phase includes parking and U/G stormwater.	January 2025	Complete	74 %	The Northwest School of the Arts construction manager continued with the Phase 1 parking lot. The asphalt surface coat and stripping was installed. The site light poles were energized and are being adjusted. The landscaper is to mobilize the beginning of January to being installations of planting and grassing. The Phase 1 scope includes an underground storm water detention system and new car parking lot in preparation for the new building in Phase 2.
Northwest School of the Arts/First Ward (23)	\$ 93,654,147	New specialty classroom space and 9-12 conversion/expansion; renovate First Ward as full magnet 6-8.		See Status	0 %	The Northwest School of the Arts Phase 2 design documents progress through the final reviews of the resubmission of approved drawings with LUESA. The construction manager continues with their subcontractor pre-qualification process and bidder manual development. Phase 2 scope includes a new administration, visual/performing arts building and campus renovations. The designer agreement for the First Ward Elementary School Renovations was finalized and purchase order issued. The due diligence activities continue and schematic design has commenced. The CMS leadership meetings will begin in February 2024.
Palisades High School (17)	\$ 107,592,534	New 100 classroom high school; relieves crowding at Olympic High School.	August 2022	Complete	100 %	Project is complete.
Park Road ES/Dilworth Latta/Sedgefield (23)	\$ 89,491,970	Relocate Park Road Montessori PK-6 program to converted Sedgefield ES; replace PRM with 45 CR school for Dilworth paired schools; repurpose Dilworth for a TBD magnet MS use		See Status	0 %	The designer agreement for the New Park Road Elementary School project was finalized and purchase order issued. The design leadership meeting is scheduled in January. The pre-schematic design, site planning, and due diligence activities have commenced. The designer agreement for the Sedgefield Elementary School Montessori Upfit project is finalized. The designer kick-off meeting and leadership meeting was held on December 18. The schematic design, planning, and due diligence activities have commenced.

Monthly Project Status

2017 and 2023 Early

December 2023

Projects Bond Summary

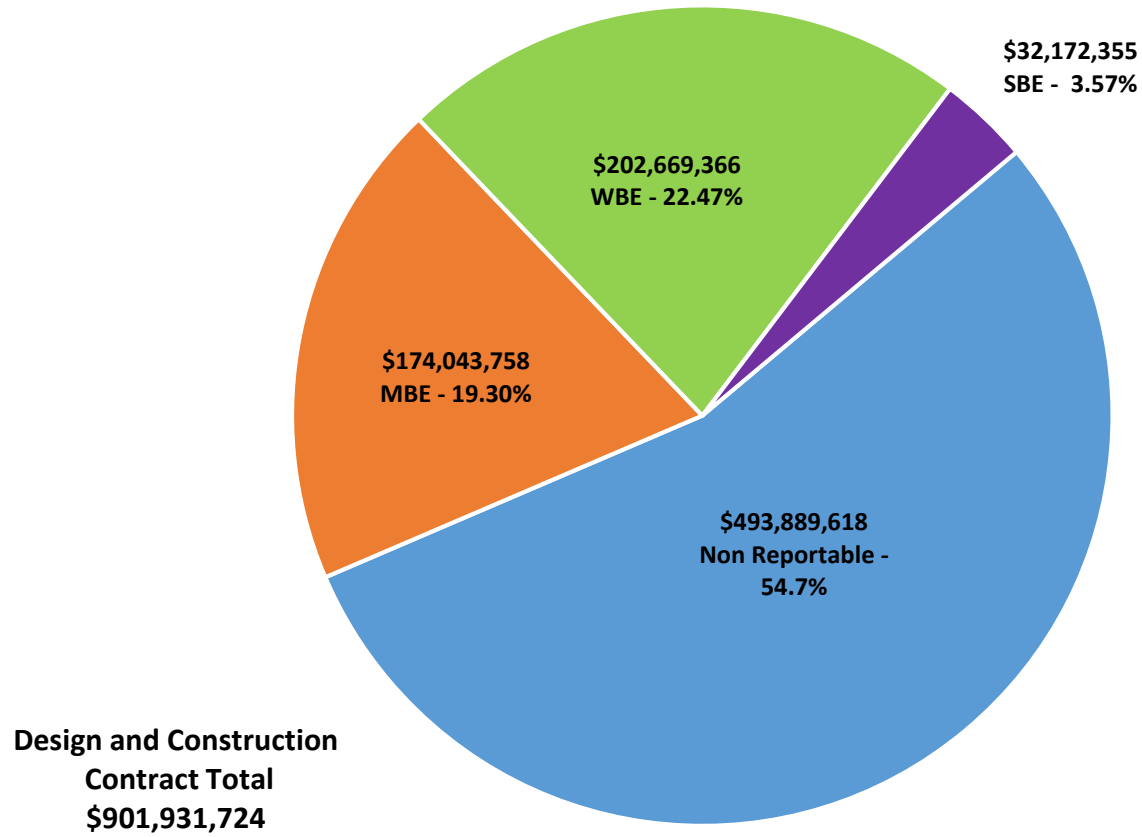
Project	Current Project Estimate	Project Scope	** Occupy On	Design Phase	Construction Progress	Project Status
Shamrock Gardens Elementary School (17)	\$ 30,084,692	New 45-classroom replacement facility.	August 2022	Complete	100 %	Project is complete.
Sharon Elementary School (17)	\$ 9,125,862	Add 16 classroom building and increase capacity of cafeteria.	August 2021	Complete	100 %	Project is complete.
South Academy of International Languages (17)	\$ 40,669,909	New 71 classroom K-8 Language Immersion facility located on the old Nations Ford Elementary School site.	August 2021	Complete	100 %	Project is complete.
South Mecklenburg High School (17)	\$ 17,322,927	Renovate/replace two classroom buildings built in 1958 to upgrade learning conditions.	January 2025	Complete	3 %	The South Mecklenburg High School construction manager has continued work on underground storm water piping. The building footings have been staked and excavation is underway. The utilities to support the new building are also being installed. The architect and engineers have reviewed submittals for the project. The new 19-classroom building will house JROTC and Arts.
South Mecklenburg High School Replacement (23)	\$ 127,909,253	Final phases of work, to include onsite replacement of balance of campus to +/- 100 CR baseline, comprehensive athletics package.		Pre-Schematic	0 %	The South Mecklenburg High School Replacement project continues with the development of its pre-schematic submission. The CMS leadership meeting is scheduled for January 5, 2024.
South Pine Academy (17)	\$ 30,477,421	New 45-classroom elementary school to relieve Nations Ford, Sterling, and Steele Creek.	August 2021	Complete	100 %	Project is complete.
West Charlotte High School (17)	\$ 104,413,163	New 100 classroom school to replace current facility built in 1954.	August 2022	Complete	100 %	The West Charlotte High School project is in the project closeout and warranty phase. Additional sidewalk work to provide connectivity is being designed for incorporation.
West Mecklenburg High School (17)	\$ 6,260,654	Provide new gymnasium, the existing gymnasium will become the auxiliary.	August 2021	Complete	100 %	Project is complete.

MWSBE PARTICIPATION REPORT

Facility	Contract Amount	African American MBE\$	%	Other MBE \$	%	Total MBE \$	%	Other WBE \$	%	Other SBE \$	%	Total	%
Ballantyne Ridge High School (17)	\$134,809,170	\$3,115,551	2.31%	\$4,493,327	3.33%	\$7,608,878	5.64%	\$6,836,473	5.07%	\$9,968,449	7.39%	\$24,413,800	18.11%
Briarwood Elementary School (17)	\$28,327,548	\$4,038,457	14.26%	\$2,135,619	7.54%	\$6,174,076	21.80%	\$2,187,249	7.72%	\$187,102	0.66%	\$8,548,427	30.18%
Bruns Avenue Elementary School (17)	\$44,462,714	\$3,766,363	8.47%	\$3,671,771	8.26%	\$7,438,134	16.73%	\$8,555,499	19.24%	\$2,312,654	5.20%	\$18,306,287	41.17%
Career and Technology Education (17)	\$6,832,606	\$546,203	7.99%	\$452,980	6.63%	\$999,184	14.62%	\$392,157	5.74%	\$65,475	0.96%	\$1,456,815	21.32%
Charlotte-Mecklenburg Academy (17)	\$16,883,930	\$198,536	1.18%	\$1,031,692	6.11%	\$1,230,228	7.29%	\$928,655	5.50%	\$13,200	0.08%	\$2,172,083	12.86%
Collinswood Language Academy (17)	\$38,527,704	\$649,307	1.69%	\$1,613,104	4.19%	\$2,262,411	5.87%	\$11,363,565	29.49%	\$8,328	0.02%	\$13,634,304	35.39%
E.E. Waddell (17)	\$2,163,815	\$53,893	2.49%	\$0	0.00%	\$53,893	2.49%	\$69,124	3.19%	\$0	0.00%	\$123,017	5.69%
East Mecklenburg High School (17)	\$12,642,198	\$603,811	4.78%	\$532,460	4.21%	\$1,136,271	8.99%	\$490,364	3.88%	\$681,075	5.39%	\$2,307,710	18.25%
Esperanza Global Academy (17)	\$39,217,599	\$8,296,515	21.16%	\$4,662,363	11.89%	\$12,958,878	33.04%	\$24,143,175	61.56%	\$1,512,572	3.86%	\$38,614,625	98.46%
Garinger High School (17)	\$3,382,522	\$98,773	2.92%	\$291,746	8.63%	\$390,520	11.55%	\$390,676	11.55%	\$251,932	7.45%	\$1,033,127	30.54%
Grove Park Elementary School (17)	\$38,660,480	\$4,897,634	12.67%	\$5,166,568	13.36%	\$10,064,203	26.03%	\$2,302,300	5.96%	\$49,132	0.13%	\$12,415,635	32.11%
Harding High School (17)	\$13,015,986	\$1,504,505	11.56%	\$309,667	2.38%	\$1,814,172	13.94%	\$4,050,417	31.12%	\$36,861	0.28%	\$5,901,449	45.34%
JT Williams (17)	\$15,517,788	\$733,661	4.73%	\$373,832	2.41%	\$1,107,494	7.14%	\$3,720,335	23.97%	\$51,800	0.33%	\$4,879,628	31.45%
Lansdowne Elementary School (17)	\$30,736,689	\$2,809,680	9.14%	\$877,274	2.85%	\$3,686,954	12.00%	\$2,266,647	7.37%	\$222,210	0.72%	\$6,175,811	20.09%
Lincoln Heights Elementary School (17)	\$2,811,884	\$318,959	11.34%	\$18,800	0.67%	\$337,759	12.01%	\$64,894	2.31%	\$74,503	2.65%	\$477,156	16.97%
Mint Hill Elementary School (17)	\$25,946,007	\$5,223,675	20.13%	\$17,791,909	68.57%	\$23,015,584	88.71%	\$1,192,408	4.60%	\$308,370	1.19%	\$24,516,362	94.49%
Montclair Elementary School (17)	\$26,093,784	\$3,593,852	13.77%	\$2,341,048	8.97%	\$5,934,900	22.74%	\$5,775,745	22.13%	\$493,707	1.89%	\$12,204,352	46.77%
Mountain Island Lake Academy (17)	\$12,203,059	\$153,353	1.26%	\$740,107	6.06%	\$893,460	7.32%	\$927,916	7.60%	\$15,300	0.13%	\$1,836,677	15.05%
New Elementary School (Elon, Hawk R	\$45,380,551	\$5,550,731	12.23%	\$1,556,777	3.43%	\$7,107,508	15.66%	\$10,718,118	23.62%	\$1,972,519	4.35%	\$19,798,145	43.63%
North Academy of World Languages (\$38,354,285	\$1,770,068	4.62%	\$1,575,864	4.11%	\$3,345,931	8.72%	\$3,473,149	9.06%	\$436,793	1.14%	\$7,255,873	18.92%
Northwest School of the Arts (17)	\$9,006,565	\$0	0.00%	\$316,650	3.52%	\$316,650	3.52%	\$125,965	1.40%	\$0	0.00%	\$442,615	4.91%
Palisades High School (17)	\$97,199,487	\$13,482,757	13.87%	\$7,641,104	7.86%	\$21,123,862	21.73%	\$8,317,153	8.56%	\$7,698,589	7.92%	\$37,139,603	38.21%
Shamrock Gardens Elementary School	\$27,148,320	\$2,478,054	9.13%	\$1,636,383	6.03%	\$4,114,438	15.16%	\$21,128,435	77.83%	\$259,554	0.96%	\$25,502,427	93.94%
Sharon Elementary School (17)	\$8,534,491	\$326,844	3.83%	\$283,497	3.32%	\$610,341	7.15%	\$926,873	10.86%	\$217,984	2.55%	\$1,755,197	20.57%

Facility	Contract Amount	African American MBE\$	%	Other MBE \$	%	Total MBE \$	%	Other WBE \$	%	Other SBE \$	%	Total	%
<u>South Academy of International Langu</u>	\$37,153,679	\$6,023,142	16.21%	\$2,431,071	6.54%	\$8,454,213	22.75%	\$10,945,346	29.46%	\$313,999	0.85%	\$19,713,558	53.06%
<u>South Mecklenburg High School (17)</u>	\$15,574,341	\$420,088	2.70%	\$1,105,960	7.10%	\$1,526,048	9.80%	\$179,816	1.15%	\$0	0.00%	\$1,705,864	10.95%
<u>South Pine Academy (17)</u>	\$26,196,854	\$916,165	3.50%	\$19,052,520	72.73%	\$19,968,685	76.23%	\$4,342,256	16.58%	\$237,754	0.91%	\$24,548,695	93.71%
<u>West Charlotte High School (17)</u>	\$95,337,102	\$14,357,815	15.06%	\$5,218,058	5.47%	\$19,575,873	20.53%	\$65,599,651	68.81%	\$3,728,348	3.91%	\$88,903,872	93.25%
<u>West Mecklenburg High School (17)</u>	\$9,810,566	\$283,809	2.89%	\$509,403	5.19%	\$793,212	8.09%	\$1,255,006	12.79%	\$1,054,146	10.75%	\$3,102,365	31.62%
Grandtotal	\$901,931,724	\$86,212,201	9.56%	\$87,831,557	9.74%	\$174,043,758	19.30%	\$202,669,366	22.47%	\$32,172,355	3.57%	\$408,885,479	45.33%

MWSBE Participation 2017 Bond Projects



MONTHLY PROJECT PHOTOS

PROJECT PROGRESS PHOTOS



New ES Elon Park, Hawk Ridge, Polo Ridge

PROJECT PROGRESS PHOTOS



New ES Elon Park, Hawk Ridge, Polo Ridge

PROJECT PROGRESS PHOTOS



New ES Elon Park, Hawk Ridge, Polo Ridge

PROJECT PROGRESS PHOTOS



New ES Elon Park, Hawk Ridge, Polo Ridge

PROJECT PROGRESS PHOTOS



New HS Ardrey Kell, South Mecklenburg

PROJECT PROGRESS PHOTOS



New HS Ardrey Kell, South Mecklenburg

PROJECT PROGRESS PHOTOS



New HS Ardrey Kell, South Mecklenburg

PROJECT PROGRESS PHOTOS



New HS Ardrey Kell, South Mecklenburg

PROJECT PROGRESS PHOTOS



New HS Ardrey Kell, South Mecklenburg

PROJECT PROGRESS PHOTOS



Bruns Elementary School Replacement

PROJECT PROGRESS PHOTOS



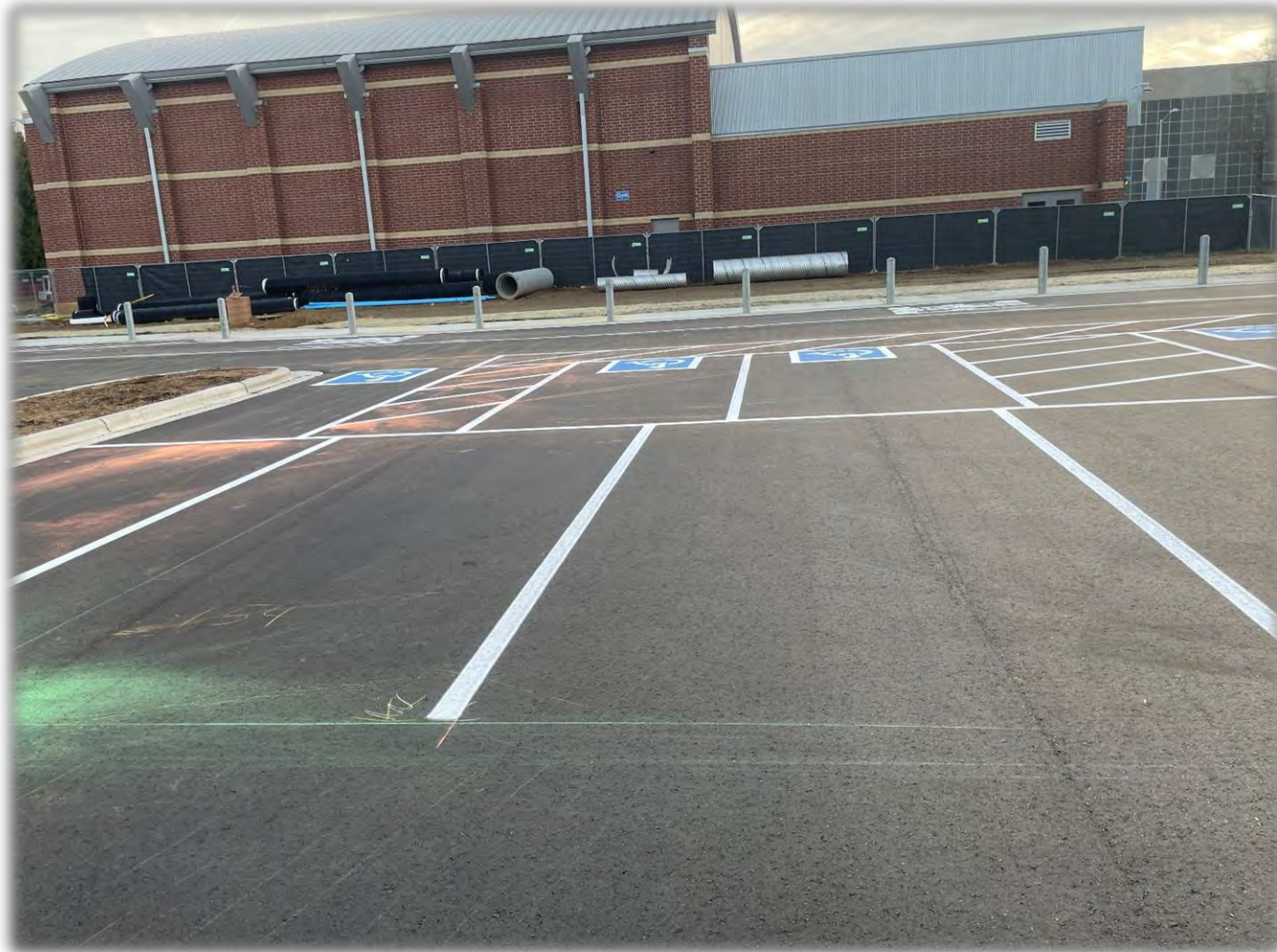
Bruns Elementary School Replacement

PROJECT PROGRESS PHOTOS



Bruns Elementary School Replacement

PROJECT PROGRESS PHOTOS



Northwest School of the Arts – Phase 1



Northwest School of the Arts – Phase 1

PROJECT PROGRESS PHOTOS



South Mecklenburg HS - Addition

PROJECT PROGRESS PHOTOS



South Mecklenburg HS - Addition

PROJECT PROGRESS PHOTOS



South Mecklenburg HS - Addition

PROJECT CONTROLS

CHARLOTTE-MECKLENBURG BOARD OF EDUCATION
2013 BOND SERIES-CAPITAL IMPROVEMENT PROGRAMS
BUDGET STATUS REPORT

	Original Project Budget	Current Project Budget	Committed Amount	Approved Change Orders	Total Committed	Pending Commitments	To Be Committed	Prev Paid To Date	Paid To Date	Balance To Complete	Monthly Expenditure
	(A)	(B)	(C)	(D)	(E)=C+D	(F)	(G)=(B-E-F)	(H)	(I)	(J)=(B-I)	(K)=(I-H)
<u>A. REPLACEMENT & RENOVATIONS</u>											
1 Career & Technology Education Institutes Phase 1:	\$8,640,000	\$20,274,950	\$8,352,614	\$11,886,062	\$20,238,676	\$0	\$36,275	\$20,238,674	\$20,238,674	\$36,277	\$0
2 Davidson K-8 Conversion	\$9,500,000	\$13,461,149	\$2,131,151	\$11,329,998	\$13,461,149	\$0	\$0	\$13,461,149	\$13,461,149	\$0	\$0
3 J.M. Alexander Middle Replacement	\$30,672,000	\$29,845,539	\$4,502,518	\$25,343,021	\$29,845,539	\$0	\$0	\$29,845,539	\$29,845,539	\$0	\$0
4 Nations Ford Elementary Replacement	\$19,440,000	\$19,231,604	\$3,958,871	\$15,272,733	\$19,231,604	\$0	\$0	\$19,231,604	\$19,231,604	\$0	\$0
5 Northwest School of the Arts	\$12,420,000	\$12,868,718	\$2,047,917	\$10,820,801	\$12,868,718	\$0	\$0	\$12,868,719	\$12,868,719	\$0	\$0
6 Oakhurst STEAM Magnet Elementary/Starmount	\$5,940,000	\$5,407,812	\$3,471,397	\$1,936,415	\$5,407,812	\$0	\$0	\$5,407,812	\$5,407,812	\$0	\$0
7 Pre-K-8 Conversions Phase II: Ashley Park/ Bruns	\$24,732,000	\$19,700,807	\$4,167,671	\$15,533,138	\$19,700,809	\$0	\$0	\$19,700,807	\$19,700,807	\$0	\$0
8 Selwyn Elementary	\$2,592,000	\$4,624,831	\$744,799	\$3,880,032	\$4,624,831	\$0	\$0	\$4,624,831	\$4,624,831	\$0	\$0
9 Statesville Road Elementary	\$20,340,000	\$20,648,509	\$5,081,473	\$15,567,037	\$20,648,509	\$0	\$0	\$20,648,509	\$20,648,509	\$0	\$0
10 West Mecklenburg HS	\$0	\$3,993,543	\$3,993,543	\$0	\$3,993,543	\$0	\$0	\$3,993,543	\$3,993,543	\$0	\$0
Total Replacement & Renovations	\$134,276,000	\$150,057,461	\$38,451,953	\$111,569,237	\$150,021,190	\$0	\$36,276	\$150,021,186	\$150,021,186	\$36,275	\$0
<u>B. RESPONSE TO ENROLLMENT GROWTH</u>											
1 East Mecklenburg High Addition	\$12,744,000	\$12,083,804	\$4,465,200	\$7,618,603	\$12,083,803	\$0	\$0	\$12,083,803	\$12,083,803	\$0	\$0
2 Myers Park High Addition	\$22,248,000	\$11,040,942	\$1,207,493	\$9,833,448	\$11,040,942	\$0	\$0	\$11,040,941	\$11,040,941	\$0	\$0
3 Northridge Middle Addition	\$6,448,000	\$6,366,170	\$2,114,306	\$4,251,865	\$6,366,171	\$0	\$0	\$6,366,171	\$6,366,171	\$0	\$0
4 Olympic High Addition/Renovation	\$8,964,000	\$8,947,310	\$2,002,694	\$6,944,615	\$8,947,310	\$0	\$0	\$8,947,310	\$8,947,310	\$0	\$0
5 South Mecklenburg High Addition	\$18,360,000	\$16,307,355	\$2,922,282	\$13,385,073	\$16,307,355	\$0	\$0	\$16,307,355	\$16,307,355	\$0	\$0
6 Charlotte East Language Academy (FKA -New Lang	\$30,376,000	\$31,387,929	\$5,740,182	\$25,647,747	\$31,387,929	\$0	\$0	\$31,387,929	\$31,387,929	\$0	\$0
7 Rea Farms STEAM Academy	\$31,376,000	\$38,898,906	\$9,077,465	\$29,821,441	\$38,898,906	\$0	\$0	\$38,898,906	\$38,898,906	\$0	\$0
8 Renaissance West STEAM Academy (FKA New Pre-	\$30,376,000	\$31,698,952	\$5,667,388	\$26,031,564	\$31,698,952	\$0	\$0	\$31,698,952	\$31,698,952	\$0	\$0
9 Ballantyne Ridge High School (FKA New HS South)	\$0	\$9,278,699	\$9,278,699	\$0	\$9,278,699	\$0	\$0	\$9,278,699	\$9,278,699	\$0	\$0
Total Response to Enrollment Growth	\$160,892,000	\$166,010,067	\$42,475,710	\$123,534,357	\$166,010,067	\$0	\$0	\$166,010,066	\$166,010,066	\$0	\$0
<u>C. CONTINGENCY</u>											
	\$0	\$0	\$0	\$0	\$0	\$0	\$0	\$0	\$0	\$0	\$0
Total Contingency	\$0	\$0	\$0	\$0	\$0	\$0	\$0	\$0	\$0	\$0	\$0
TOTAL LOCAL BOND PROGRAM	\$295,168,000	\$316,067,527	\$80,927,663	\$235,103,594	\$316,031,257	\$0	\$36,276	\$316,031,252	\$316,031,252	\$36,276	\$0

Original project estimated costs approved by the Board Of Education on July 23, 2013 and approved by the voters of Mecklenburg County on November 5, 2013.

Note: Mecklenburg County's appropriated interest from COPS to increase funding for the 2013 Bond Program.

CHARLOTTE-MECKLENBURG BOARD OF EDUCATION
2017 BOND SERIES-CAPITAL IMPROVEMENT PROGRAMS
BUDGET STATUS REPORT

	Original Project Budget	Current Project Budget	Committed Amount	Approved Change Orders	Total Committed	Pending Commitments	To Be Committed	Prev Paid To Date	Paid To Date	Balance To Complete	Monthly Expenditure
	(A)	(B)	(C)	(D)	(E)=C+D	(F)	(G)=(B-E-F)	(H)	(I)	(J)=(B-I)	(K)=(I-H)
<u>A. REPLACEMENT & RENOVATIONS</u>											
1 Briarwood Elementary *	\$29,091,619	\$31,243,066	\$4,730,737	\$26,410,339	\$31,141,076	\$0	\$101,990	\$31,136,083	\$31,136,111	\$106,956	\$27
2 Bruns Academy Replacement	\$34,207,808	\$48,859,580	\$5,620,665	\$42,502,008	\$48,122,673	\$6,061	\$730,846	\$19,477,701	\$20,660,339	\$28,199,241	\$1,182,638
3 Career & Technology Education Upgrades	\$10,101,734	\$6,984,007	\$3,665,419	\$3,318,588	\$6,984,007	\$0	\$0	\$6,984,007	\$6,984,007	\$0	\$0
4 Collinswood K-8 *	\$44,172,540	\$41,401,384	\$4,916,632	\$36,484,752	\$41,401,384	\$0	\$0	\$41,401,384	\$41,401,384	\$0	\$0
5 East Mecklenburg HS	\$12,771,594	\$10,231,911	(\$1,659,510)	\$11,823,832	\$10,164,322	\$0	\$67,590	\$10,141,268	\$10,141,268	\$90,643	\$0
6 Garinger HS	\$13,936,979	\$5,236,979	\$666,118	\$3,534,819	\$4,200,936	\$0	\$1,036,043	\$3,907,218	\$3,907,218	\$1,329,761	\$0
7 Harding University High *	\$18,330,263	\$13,747,878	\$2,045,267	\$11,702,610	\$13,747,877	\$0	\$0	\$13,747,877	\$13,747,877	\$0	\$0
8 Charlotte-Mecklenburg Academy (FKA -EC Specialty	\$18,957,960	\$17,699,220	\$2,175,504	\$15,523,717	\$17,699,220	\$0	\$0	\$17,699,220	\$17,699,220	\$0	\$0
9 Lansdowne Elementary	\$29,391,270	\$33,554,188	\$3,974,822	\$29,426,290	\$33,401,113	\$41,075	\$112,001	\$32,707,717	\$32,707,717	\$846,471	\$0
10 Lincoln Heights Elementary	\$3,740,478	\$4,588,675	\$2,823,274	\$817,550	\$3,640,824	\$17,000	\$930,851	\$2,950,546	\$3,020,887	\$1,567,788	\$70,341
11 Montclair Elementary Replacement *	\$28,559,390	\$28,200,634	\$2,426,761	\$25,773,873	\$28,200,634	\$0	\$0	\$28,200,634	\$28,200,634	\$0	\$0
12 Mountain Island k-8	\$9,218,439	\$13,239,686	\$1,658,168	\$11,418,864	\$13,077,032	\$12,000	\$150,654	\$12,130,479	\$12,306,554	\$933,132	\$176,075
13 Northwest School of the Arts	\$17,632,202	\$12,167,000	\$5,233,972	\$4,700,259	\$9,934,231	\$0	\$2,232,769	\$4,332,163	\$5,128,335	\$7,038,665	\$796,172
14 Shamrock Gardens Elementary *	\$29,890,351	\$30,084,692	\$3,422,159	\$26,430,489	\$29,852,647	\$0	\$232,045	\$29,757,027	\$29,757,027	\$327,665	\$0
15 Sharon Elementary	\$7,706,528	\$9,125,862	\$1,430,033	\$7,675,679	\$9,105,712	\$0	\$20,150	\$9,079,791	\$9,079,791	\$46,071	\$0
16 South Mecklenburg HS	\$13,352,143	\$17,322,927	\$2,070,346	\$14,216,781	\$16,287,127	\$0	\$1,035,800	\$1,546,943	\$2,285,459	\$15,037,468	\$738,516
17 E.E. Waddell Magnet HS	\$4,571,709	\$5,137,367	\$2,945,755	\$356,383	\$3,302,138	\$0	\$1,835,229	\$2,838,348	\$3,029,183	\$2,108,184	\$190,835
18 West Charlotte HS Replacement	\$109,977,166	\$104,413,163	\$11,784,413	\$91,554,295	\$103,338,708	\$25,900	\$1,048,555	\$101,537,424	\$101,718,142	\$2,695,021	\$180,718
19 West Mecklenburg HS	\$11,065,440	\$6,260,654	(\$2,370,464)	\$8,631,118	\$6,260,654	\$0	\$0	\$6,260,654	\$6,260,654	\$0	\$0
20 John Taylor Williams	\$13,964,339	\$17,032,600	\$3,532,722	\$12,492,488	\$16,025,210	\$4,286	\$1,003,104	\$14,826,456	\$15,278,104	\$1,754,496	\$451,648
Total Replacement & Renovations	\$460,639,952	\$456,531,473	\$61,092,793	\$384,794,734	\$445,887,527	\$106,321	\$10,537,626	\$390,662,943	\$394,449,912	\$62,081,562	\$3,786,969
<u>B. RESPONSE TO ENROLLMENT GROWTH</u>											
1 South Academy of International Languages	\$45,359,367	\$40,669,909	\$5,969,503	\$34,700,138	\$40,669,641	\$0	\$268	\$40,586,977	\$40,603,147	\$66,762	\$16,170
2 North Academy of World Languages (FKA - New K-8	\$45,359,367	\$41,742,062	\$6,024,166	\$35,717,896	\$41,742,062	\$0	\$0	\$41,742,062	\$41,742,062	\$0	\$0
3 South Pine Academy (FKA - New ES Nations Ford, S	\$29,173,829	\$30,477,421	\$6,883,836	\$23,593,585	\$30,477,421	\$0	\$0	\$30,477,421	\$30,477,421	\$0	\$0
4 Mint Hill Elementary School	\$29,988,332	\$29,480,274	\$3,296,439	\$25,950,837	\$29,247,276	\$0	\$232,998	\$29,025,246	\$29,025,246	\$455,028	\$0
5 Esperanza Global Academy (FKA New ES - Windsor	\$30,422,230	\$45,297,022	\$13,153,489	\$31,553,502	\$44,706,991	\$69,046	\$520,984	\$40,413,685	\$41,626,545	\$3,670,477	\$1,212,860
6 New Elementary School - Elon/Hawk Ridge Relief *	\$30,426,712	\$60,641,761	\$16,345,530	\$43,557,251	\$59,902,781	\$190,749	\$548,231	\$45,018,066	\$46,743,454	\$13,898,306	\$1,725,388
7 Grove Park Elementary (FKA New ES - Hidden Valle	\$30,518,345	\$44,079,387	\$6,309,679	\$36,697,109	\$43,006,789	\$33,000	\$1,039,599	\$39,094,792	\$39,796,330	\$4,283,057	\$701,538
8 Palisades High School	\$109,908,793	\$107,592,534	\$10,844,854	\$95,390,688	\$106,235,542	\$20,042	\$1,336,950	\$105,700,348	\$105,827,941	\$1,764,593	\$127,593
9 Ballantyne Ridge High School (FKA New HS South)	\$110,287,621	\$148,962,116	\$14,935,862	\$130,962,556	\$145,898,419	\$699,773	\$2,363,924	\$87,221,321	\$92,266,756	\$56,695,360	\$5,045,435
Total Response to Enrollment Growth	\$461,444,596	\$548,942,486	\$83,763,358	\$458,123,562	\$541,886,920	\$1,012,611	\$6,042,955	\$459,279,918	\$468,108,902	\$80,833,584	\$8,828,984
<u>C. CONTINGENCY</u>											
	\$0	\$0	\$0	\$0	\$0	\$0	\$0	\$0	\$0	\$0	\$0
Total Contingency	\$0	\$0	\$0	\$0	\$0	\$0	\$0	\$0	\$0	\$0	\$0

CHARLOTTE-MECKLENBURG BOARD OF EDUCATION
2017 BOND SERIES-CAPITAL IMPROVEMENT PROGRAMS
BUDGET STATUS REPORT

	Original Project Budget	Current Project Budget	Committed Amount	Approved Change Orders	Total Committed	Pending Commitments	To Be Committed	Prev Paid To Date	Paid To Date	Balance To Complete	Monthly Expenditure
	(A)	(B)	(C)	(D)	(E)=C+D	(F)	(G)=(B-E-F)	(H)	(I)	(J)=(B-I)	(K)=(I-H)
TOTAL LOCAL BOND PROGRAM	\$922,084,548	\$1,005,473,960	\$144,856,151	\$842,918,296	\$987,774,447	\$1,118,932	\$16,580,580	\$849,942,861	\$862,558,814	\$142,915,145	\$12,615,953

Original project estimated costs approved by the Board Of Education on July 25, 2017 approved by the voters of Mecklenburg County on November 7, 2017.

*Project included in \$33.2M early funding approved by Board Of Education on August 9, 2016 and Mecklenburg Board of County Commissioners on September 6, 2016. On February 19, 2019 an additional \$8M was approved for New Elementary School - Elon/Hawk Ridge Relief site.

*Current Budget includes an additional \$89.2M to fund increase land and construction costs. The additional funds were approved by the Board of County Commissioners on June 16, 2020.

The New Elementary School - Elon/Hawk Ridge Relief current Budget includes 6.8M for Park and Recreation Project.

Bruns Academy Replacement current budget includes \$1.5M for Park and Recreation Project.

Current Program Budget reflects a reclass of \$7.4M in expenditures to 2007 Bond Program and \$14.4M in expenditures to 2013 Bond Program.

CHARLOTTE-MECKLENBURG BOARD OF EDUCATION
FY 2024 CAPITAL IMPROVEMENT PROGRAMS
BUDGET STATUS REPORT

	Original Project Budget	Current Project Budget	Committed Amount	Approved Change Orders	Total Committed	Pending Commitments	To Be Committed	Prev Paid To Date	Paid To Date	Balance To Complete	Monthly Expenditure
	(A)	(B)	(C)	(D)	(E)=C+D	(F)	(G)=(B-E-F)	(H)	(I)	(J)=(B-I)	(K)=(I-H)
<u>A. REPLACEMENT & RENOVATIONS</u>											
1 Cotswold Elementary School - Onsite Replacement	\$80,555,856	\$80,555,856	\$6,595,663	\$0	\$6,595,663	\$0	\$73,960,193	\$0	\$0	\$80,555,856	\$0
2 Marie G Davis Montessori Upfit	\$9,174,783	\$9,174,783	\$781,853	\$0	\$781,853	\$0	\$8,392,930	\$0	\$0	\$9,174,783	\$0
3 North Mecklenburg High School Replacement	\$228,464,171	\$228,464,171	\$18,773,819	\$0	\$18,773,819	\$0	\$209,690,352	\$31,120	\$66,219	\$228,397,952	\$35,099
4 Northwest School of the Arts/First Ward	\$93,654,147	\$93,654,147	\$5,073,792	\$0	\$5,073,792	\$0	\$88,580,355	\$0	\$0	\$93,654,147	\$0
5 Park Road ES/Dilworth Latta/Sedgefield	\$89,491,970	\$89,491,970	\$7,616,576	\$0	\$7,616,576	\$0	\$81,875,394	\$66,529	\$211,840	\$89,280,130	\$145,311
6 South Mecklenburg High School Replacement	\$127,909,253	\$127,909,253	\$11,373,204	\$0	\$11,373,204	\$0	\$116,536,049	\$0	\$167,604	\$127,741,649	\$167,604
Total Replacement & Renovations	\$629,250,180	\$629,250,180	\$50,214,907	\$0	\$50,214,907	\$0	\$579,035,273	\$97,649	\$445,663	\$628,804,517	\$348,014
<u>B. RESPONSE TO ENROLLMENT GROWTH</u>											
1 New South MS#1 - Cato Property	\$101,089,262	\$101,089,262	\$7,811,965	\$0	\$7,811,965	\$0	\$93,277,297	\$276,750	\$276,750	\$100,812,512	\$0
2 New Second Ward High School	\$176,810,460	\$176,810,460	\$15,304,634	\$0	\$15,304,634	\$0	\$161,505,826	\$0	\$0	\$176,810,460	\$0
Total Response to Enrollment Growth	\$277,899,722	\$277,899,722	\$23,116,599	\$0	\$23,116,599	\$0	\$254,783,123	\$276,750	\$276,750	\$277,622,972	\$0
	\$907,149,902	\$907,149,902	\$73,331,507	\$0	\$73,331,507	\$0	\$833,818,396	\$374,399	\$722,413	\$906,427,489	\$348,014

Original Budget Project costs approved and authorized by the Board of County Commissioners on June 6, 2023.

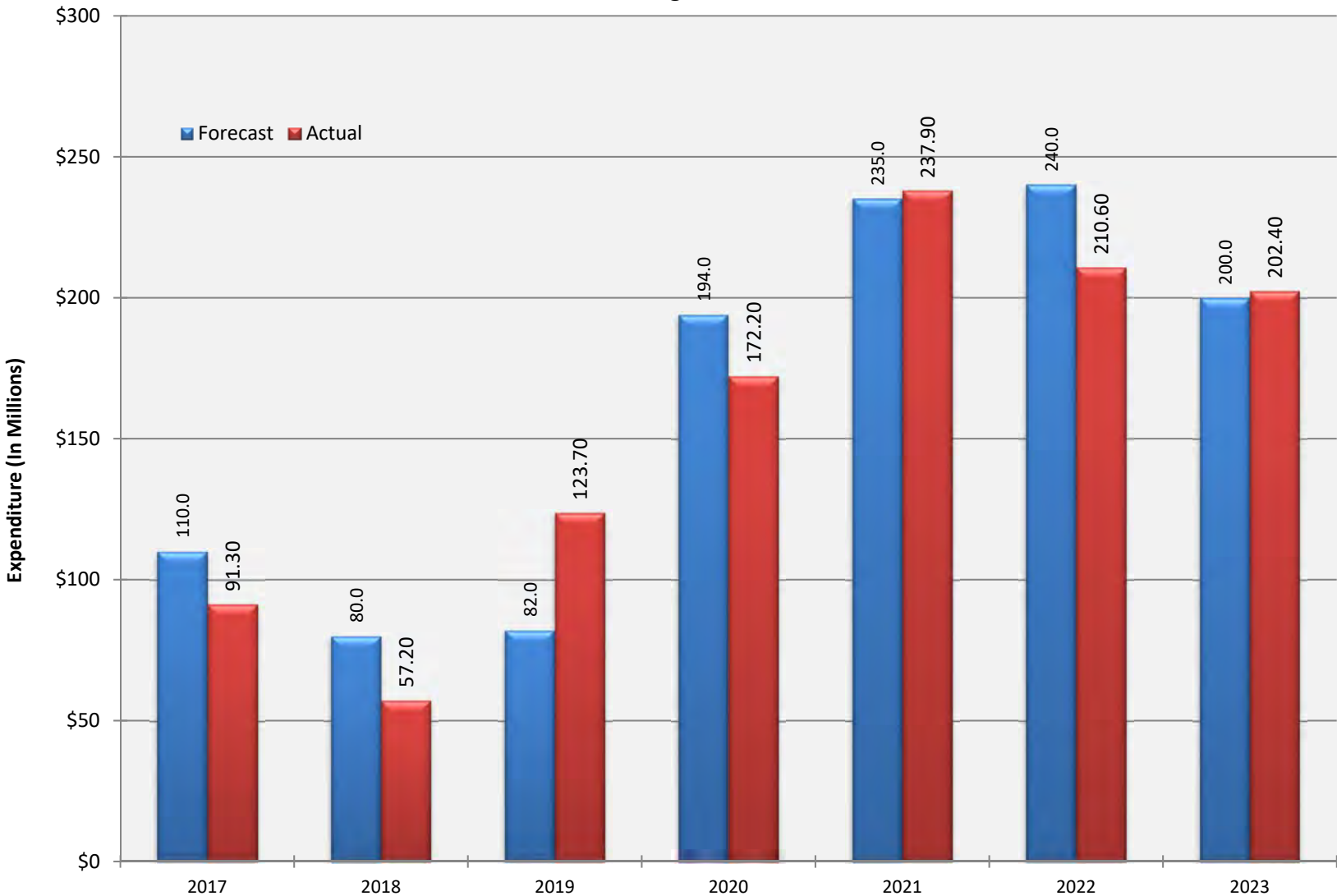
Charlotte-Mecklenburg Board of Education
Approved Construction or Repair Change Orders*
Reporting Period: December 2023

Funding Source	Project Name	Contractor	Description	Change Order Amount	Revised Contract Value
2017 Bond	Esperanza Global Academy (17)	Rodgers Builders, Inc.	Infill South CMU Wall for Basketball Goal support; door swing revision; Provide Stainless at Coiling Counter Door; Provide Metro Shelving Unit; Delete (13) yard inlets and associated piping; Provide Idea Paint ILO Original Paint; Change Dishwasher model; Unsuitable Soils at Parking Lot & NW Retaining Wall; Parapet Walls Change, Add Transfer Air Ducts; Provide ceiling mounted occupancy sensors & revise Mech Yard fixtures; Add Bollards at Dumpster Enclosure; Relocate Stage Lights; Steel at Entry Storefront; Soffit at Area C Stair; Sod @ Catch Basins; Fence and Gate Revisions; Fire Alarm shunt for the Multi-Purpose Room Sound System; ADA at K-1 Sinks; Concrete Pedestal at Front Entrance; Revise Towel Dispensers at Kitchen; Bus Lot Pavement Markings for PE; revise Allowance/CM contingency.	\$0.00	\$36,563,660.00
2017 Bond	West Charlotte High School (17)	RODGERS-HOLT BROTHERS, a Joint Venture	Landscaping Improvements at Campus Site Perimeter; Add 6' Tall Vinyl Coated Chain Link including (3) Double Drive Gates; Add Data to Rm A125 Rm A227; Sod at Catch Basins; Provide 480V 3 phase power to Unit Heater in Stairwell; Strip crosswalk to align with new curb cut; Reconcile Sitework Allowance.	\$22,257.15	\$88,845,929.15

* Not previously presented to the Board of Education for Approval

EXPENDITURE SUMMARY

Forecast Expenditure vs. Actual
2017 through - December 2023



GLOSSARY

Glossary

- **Project Management** – This section includes updates from our project managers and describes the currently active construction projects. This includes from Board of Education award thru final completion.
- **Design and Bidding** – This section contains updates from our design managers on the projects currently in the design phase. This phase from design award to Board of Education award of construction.
- **Controls** – Section includes misc. updates from controls group including expenditures, related Board of Education awards during the reporting period, cash flow information. This section covers all projects from approved bond through final expenditures and bond close with the county.
- **MWSBE** – Contains updates from the MWSBE Director and team, including current activity and summaries of the participation by MWSBE providers on our program.
- **Bond Progress Summary** – Provides a summary of bond financials including bond value, committed/pending amounts, paid to date, expended this month.
- **Project Procurement Dates** - Next 90 Days major project bid activity.
- **Mobile Swing Space Utilization** – Includes a summary of program related swing space currently in use and the schedule of use.
- **Bond Summary Schedule** – Current program summary schedule including planned design, construction and FF&E. These activities are fed from detailed schedules and are fine-tuned as project information is available.
- **Project Contractor Teams**; Provides summary of turnover dates for completed/closed projects since 2010 including architects/designers and contractors.
- **School Site Location Maps** – General location of bond projects (2017) by type.
- **Project Status Report** – This section of the report provides a summary of the bond project scope, current estimate (all sources), planned occupancy/actual occupancy date. It also provides a current status of the design phase, construction progress and a brief update. The report currently includes 2013 and 2017 bond projects that have or will be completed after to August 2016.
- **MWSBE Participation Report** – The MWSBE report provides a summary of the participation on the 2013 & 2017 Bond funded projects.
- **Project Progress Photos** – Includes photos of active construction projects.
- **Budget Summary Reports** – These reports are by funding source and summarize financial activity to date on the projects. This includes original and current project estimates, committed values, amounts paid to date, balances and monthly expenditures.
- **Change Orders < \$90,000** – This month's approved construction or repair change orders < \$90,000.
- **Expenditure Summary** – Provides a summary of Bond Expenditures by calendar year.