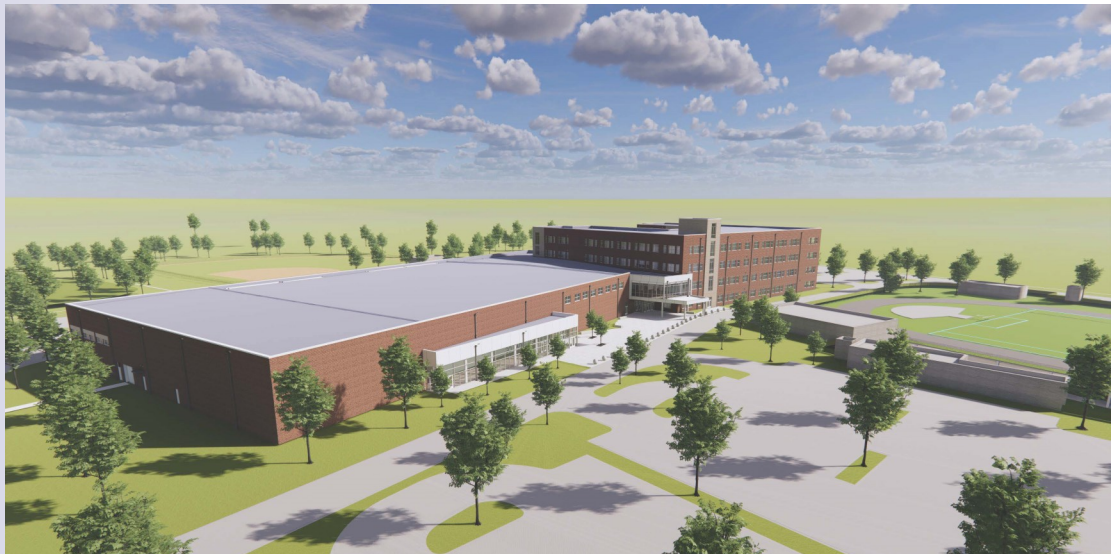


Capital Improvement Program

Monthly Bond Report
October 2023



Ballantyne Ridge High School



CAPITAL PROGRAM SERVICES Capital Improvement Program

OCTOBER 2023 **MONTHLY BOND REPORT**

PROGRAM OVERVIEW

- Project Management
- Design and Bidding
- Controls
- MWSBE
- Bond Progress Summary
- Project Procurement - Next 90 Days
- Bond Summary Schedule
- Project Contractor Teams; Projects in Design/Construction and Substantially Completed/Closed
- School Site Location Maps
 - Elementary Schools
 - Middle Schools
 - High Schools & Specialty Schools

PROJECT STATUS REPORT

MWSBE PARTICIPATION REPORT

PROJECT PROGRESS PHOTOS

PROJECT CONTROLS

- Budget Summary Reports
 - 2013 Bond Series
 - 2017 Bond Series
- Change Orders < \$90,000
- Expenditure Summary

GLOSSARY

PROGRAM OVERVIEW

PROJECT MANAGEMENT

The following is a summary of the activity on the bond-funded projects in construction during the month of October.

The **Bruns Elementary School Replacement** construction manager is progressing with enclosing the building. The exterior sheathing was installed followed by spray foam insulation on 50% of the building. The trades are working diligently on the interior with MEP rough-ins taking place in all areas, above ceiling and in wall. The site work contractor is working on miscellaneous roof and area drains. Scheduled occupancy is August 2024. The demolition of the old building and associated site work will commence once the new building is occupied.

The **New Elementary School (Elon, Hawk Ridge, Polo Relief)** construction manager continues to manage multiple trades on the project. MEP continued with above ceiling and in wall rough-ins throughout the building. The glass and glazing contractor progressed throughout the building with windows and storefront. The painter, tile and ceiling trades mobilized to the site and began installations in designated areas. The site work contractor continued with installations on Beau Riley Road and final grading around the building. The offsite roadwork contractor mobilized and began clearing and grubbing along with minor grading work. The new 45-classroom elementary school is located across from the Ardrey Kell High School and scheduled occupancy is August 2024.

The **New High School (South, Ardrey Relief)** construction manager continued coordinating multiple trades on site. The mason continued with interior CMU installation to the building along with mobilizing the brick veneer installers for installation. All the exterior metal studs and sheathing have been installed along with temporary opening protection throughout the building. Spray fireproofing continued along with prime painting in designated areas. The MEP trades continued throughout in preparations for drywall installations. Equipment in the main mechanical and electrical rooms was set with piping and branch wire connections made. The athletic surface trade mobilized and began the main field installations and final grading of the practice field. The site work contractor continued with final grading, roadwork, the remaining site walls and installation of the bottomless culvert. The team continues to work with Charlotte Water and Duke Power to facilitate permanent power to the building. The new 100-classroom relief high school scheduled occupancy is August 2024.

The **Northwest School of the Arts** construction manager continued on Phase 1 installing the underground detention system and began final grading the site. The electrician mobilized and installed underground conduit for the new light poles. Preparations began for the new domestic water, fire line and sewer connections. The Phase 1 scope includes underground storm water detention system and new car parking lot in preparation for the new building in Phase 2.

The **South Mecklenburg High School** construction manager has mobilized to start the new three-story classroom building adjacent to the F Building. The new building will house JROTC and Arts. The contractors are working through material submittals and layout; construction is scheduled to start in November. The new classroom wing is scheduled for occupancy in January 2025.

DESIGN AND BIDDING

The following is a summary of the activity on the bond-funded projects in design and bidding phase during the month of October.

The **Northwest School of the Arts** Phase 2 design documents continue to progress in the construction document phase. Documents were submitted for permit approval in early October. Phase 2 scope includes a new administration, visual/performing arts building and other campus renovations.

CONTROLS

Expenditures for the month of October were \$14.7M. This brings our fiscal year to date total to \$63.4M against the 2024 fiscal year cash flow projection of \$165M. The Controls team continues the reconciliation and closeout of completed 2017 bond projects. Completed purchase orders are being closed out. Available funding identified from completed purchase orders are being accumulated to be used for future capital needs.

The Controls team continues to submit notices of potential changes at school sites so senior staff can adequately evaluate any issues. Additionally, the Controls team continues the processing of contracts, invoices, preparing notices of potential change, change orders, pay applications and check requests for projects under construction. Captured construction cost data is used to prepare financial reports such as detailed cost reports, budget summaries, reconciliation to CMS books, revisions to and updated cash flows and complete special financial requests by CMS and Mecklenburg County. This process, along with data compilation and management, allows senior staff to provide the proper guidance/direction and accurate information to the program.

No Bond related consent items were submitted for Board of Education approval during the month of October.

MWSBE

As of October 2023 the overall MWSBE utilization percentage related to design and construction of the 2017 bond projects is 45.33% which includes 19.31% participation by minority contractors, 22.36% by women contractors and 3.66% participation by small business contractors. This accounts for more than \$410 million of utilization by Minority, Women and Small Business Contractors.

The Diversity & Inclusion Office of Charlotte-Mecklenburg Schools continued to conduct several individual virtual orientations with new MWSBE contractors and prime contractors. In addition, team members also attended/hosted the following outreach sessions/pre-bid meetings and/or workforce development opportunities:

Outreach Sessions:

- Heart of a Woman Conference
- Carolinas-Virginia Minority Supplier Development Council Centers of Excellence
- Supplier Diversity Roundtable
- Mecklenburg County Business Launch Pad Program Noontime Knowledge – How to do business with CMS
- Statewide Minority Business Development Conference
- Charlotte Minority Enterprise Development Week hosted by Charlotte Area Transit Systems, Charlotte-Mecklenburg Schools, City of Charlotte, Central Piedmont Community College, Hispanic Contractors Association, Inlivan, Mecklenburg County, Metrolina Minority Contractors Association, National Institute Minority Economic Development, NC HUB Office and Women's Business Center of Charlotte. Attendees participated in a variety of workshops, Golf Tournament, Business Expo and Awards Celebration Luncheon.

We would like to thank the following sponsors: Ascendance Electric, Aspire Community Capital, Atrium Health, Balfour Beatty, Brasfield & Gorrie, Brownstone, CAGC Foundation, Clancy & Theys, Cuzzo's Cuisine, DiverseCity Services, Edifice, Edison Foard, Gastonia Plumbing & Heating Company, Inc. Gensler, Holder Construction, Informatic Concepts, Jennifer Temps, Leeper Construction, Lil Associates, McFarland Construction, Messer Construction, NC Education Lottery, New Atlantic, Rodgers Builders, Samet, Superior Mechanical, Taylor Interiors, The M3L Group, TRSI Group, Turner Construction Vannoy Construction, WC Construction, and Whiting-Turner Construction.

Commendations:

- Congratulations to the following Charlotte Minority Enterprise Development Honorees: **Genesis Construction** - Achievement in Construction; **Integra Design** - Achievement in Professional Services; **All Things Professional, Inc.** - Achievement in General Services; **Miller Services** - Achievement in Supply & Manufacturing; **Alessandra Degernes** - Diversity Advocate and **Cathay Dawkins** founder of Black Business Owners of Charlotte, Diversity Agency of the Year. Award winners were selected for overall growth and impact on the business community.
- Workforce development awards were also presented to members of the community who have recognized the need to advocate, provide targeted job readiness skills and offer employment opportunities for graduates of these programs to improve the overall economic vitality of our community. **Optima** received the Workforce Development Advocate of the Year, **Central Piedmont Community College** received the Workforce Development Community Partner of the Year and **Messer Construction** received the Workforce Development Champion of the Year award.
- The Trailblazer Award honors distinguished individuals and organizations who have gone above and beyond to open doors and provide a more equitable environment for minority, women, and small business (MWSBE) owners. This year marks the 30th anniversary of the first MWSBE position created by the Charlotte-Mecklenburg Board of Education dedicated to increasing the amount of goods and services procured from MWSBE firms and removing barriers to access various opportunities. The **Charlotte-Mecklenburg Board of Education** was recognized for their leadership, **Ms. Bridget Wall-Lennon**, the first CMS MWSBE Administrator who went on to serve as the first director of the North Carolina Historically Underutilized Business Office and **Ms. Shawn G. Turner**, the second CMS MWSBE Administrator who cleared the pathway to transform how our public entities do business. Thanks to their efforts, we now have general statutes that govern the utilization of diverse firms, aspirational goals, good faith efforts, informal/formal bid thresholds, inclusion language, policies and statewide uniform certification that serve as the foundational tools used across the State of North Carolina. Each recipient was presented with a plaque recognizing their service, leadership, and dedication to the MWSBE community.



Photo: CMS Board Members Jennifer De La Jara, Lenora Shipp, Bridge Wall-Lennon and Shawn G. Turner

Over the next month, team members will continue to work with contractors interested in bidding on the upcoming school projects utilizing various virtual tools to communicate. Contractors are encouraged to review bid advertisements in Charlotte Observer and register as a vendor on the North Carolina Interactive Purchasing System for notification of the various opportunities.

BOND PROGRESS SUMMARY As of October 2023

Funding Source and Value		Amount Committed/Pending	Amount Paid to Date	Amount Expended This Period
'13 Bond	\$316,067,527	\$316,031,257	\$316,031,251	\$1,944,176
'17 Bond	\$1,005,473,959	\$983,736,051	\$832,532,814	\$12,617,259
Grand Total	\$1,321,541,486	\$1,299,767,308	\$1,148,564,065	\$14,561,435

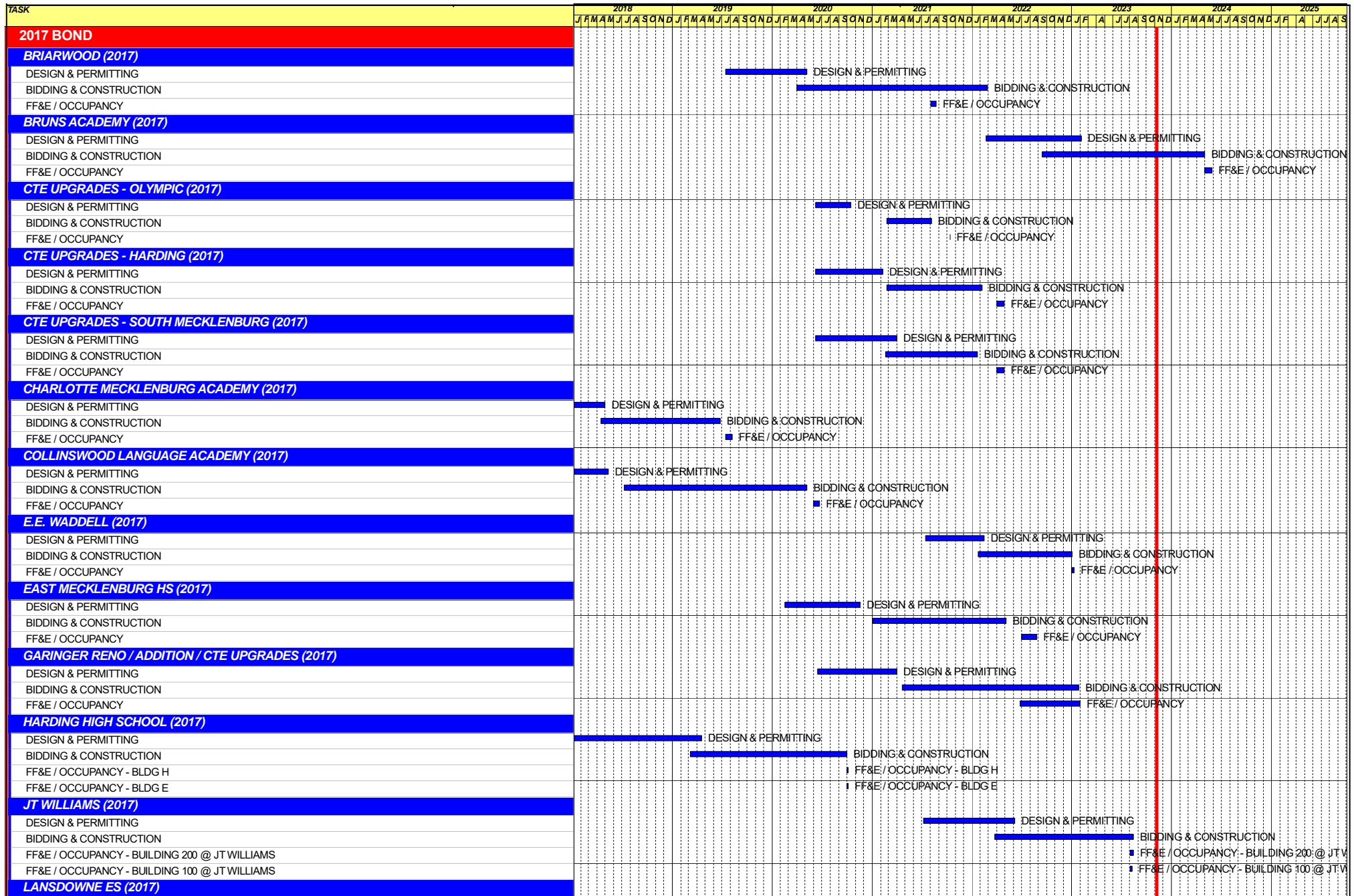
UPCOMING MAJOR CONSTRUCTION PROCUREMENT DATES *Three-Month Look Ahead*

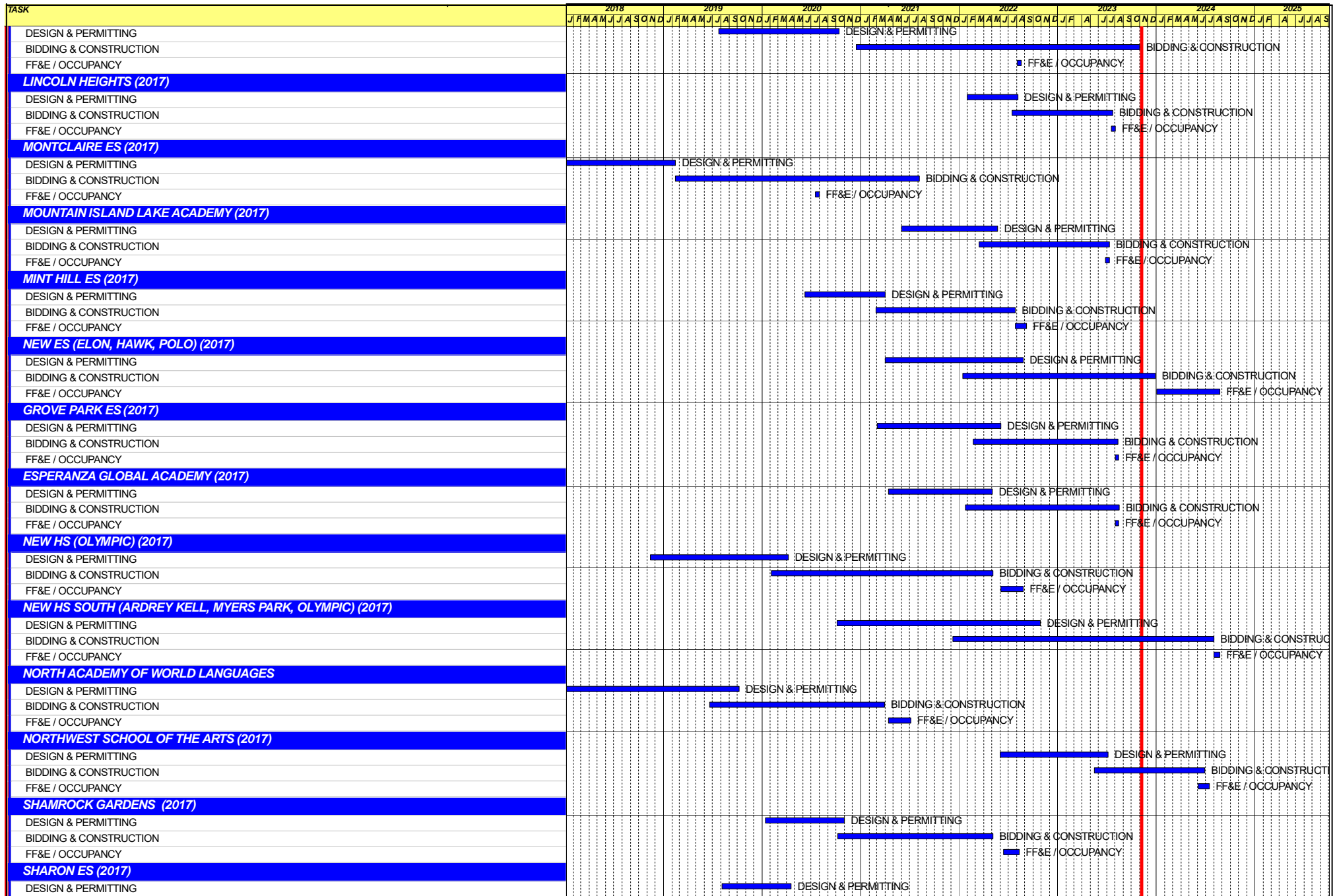
School Name

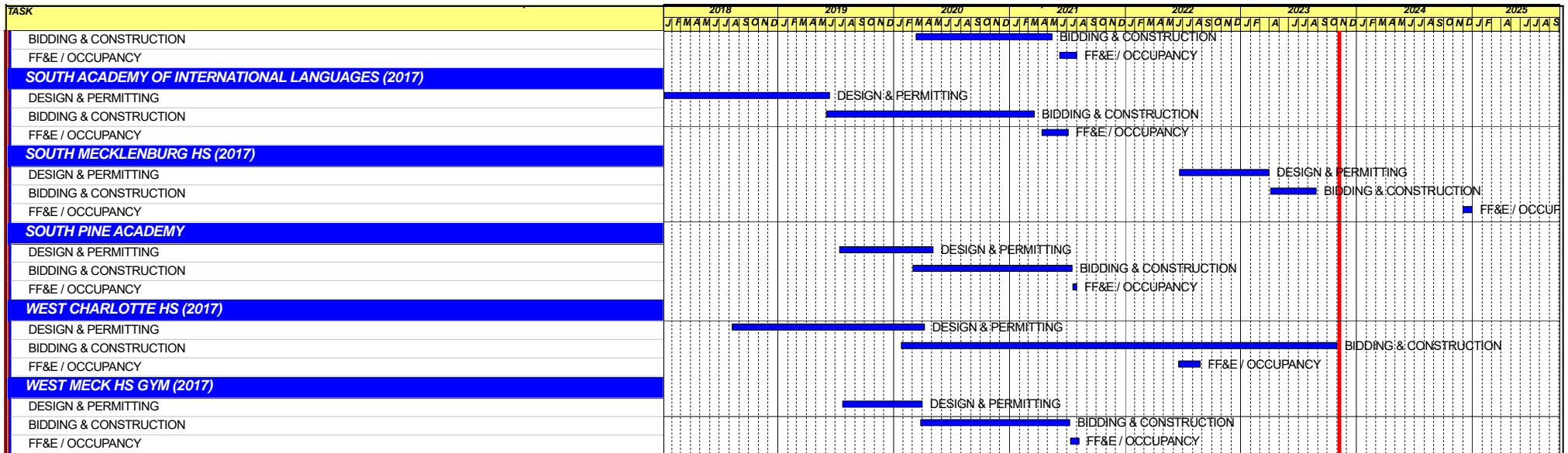
Bid Dates*

None

** NOTE: Work In Progress...Dates Subject to Change.*







Capital Improvements Program
Projects in Design or Under Construction

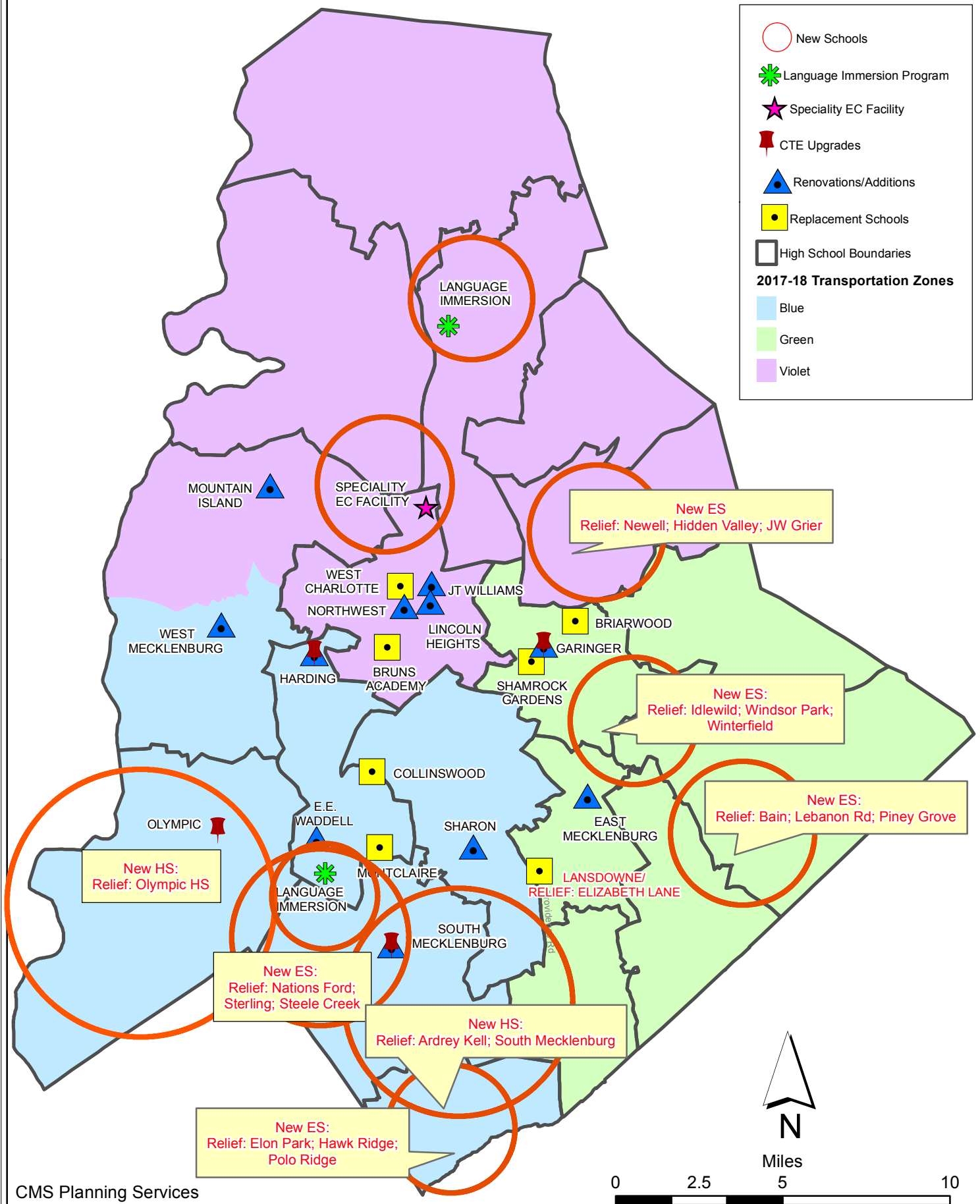
School	Architect	General Contractor/CM
Projects In Design		
Northwest School of the Arts Addition (17)	LS3P	Balfour Beatty
Projects in Bid/Award/Construction Phase		
New ES (Elon,Hawk Ridge, Polo Ridge) (17)	Little Diversified	Balfour Beatty
New Bruns Avenue ES (17)	ADW	Edifice, Inc.
New HS (South, Ardrey) (17)	Ratio	Messer
Northwest School of the Arts Addition (17)	LS3P	Balfour Beatty
South Mecklenburg High School Addition (17)	Morris Berg	Balfour Beatty

Capital Improvements Program
Projects Substantially Completed/Closed *

School	Turnover Year	Architect	General Contractor
J.T. Williams (17)	Aug-23	FWA	New Atlantic Contracting
Lincoln Heights Repurpose (17)	Aug-23	Neighboring Concepts	Randolph & Sons
Mountain Island School (17)	Aug-23	ADW	Whiting-Turner
Grove Park ES (17)	Aug-23	ADW	Edifice, Inc.
Esperanza Global Academy (17)	Aug-23	Neighboring Concepts	Rodgers-Holt Brothers
E.E. Waddell (17)	Jan-23	Moseley	Randolph & Sons Builders
Garinger Addition/Renovation & CTE (17)	Jan-23	LS3P	Balfour Beatty
West Charlotte High School (17)	Aug-22	LS3P	Rodgers-Holt Brothers
Lansdowne Elementary School Replacement (17)	Aug-22	Perkins Eastman	Edifice, Inc.
Palisades High School (Olympic Relief) (17)	Aug-22	Little Diversified	Edifice, Inc.
Shamrock Gardens Elementary School Replacement (17)	Aug-22	Little Diversified	Rodgers-Holt Brothers
Mint Hill ES (17) <i>(fka Bain, Lebanon Rd, Piney Grove)</i>	Aug-22	FWA	Metcon
East Mecklenburg High School (17)	May-22	Morris Berg	Turner Construction
CTE (Harding, Olympic, South) (17)	Jan-22	MPS	Branch Brownstone
Briarwood Elementary School Replacement (17)	Aug-21	ADW	New Atlantic Contracting
Montclair Elementary School (17)	Aug-21	WHN	Messer Construction
North Academy of World Languages (17)	Aug-21	ADW	New Atlantic Contracting
Sharon Elementary School (17)	Aug-21	Clark Nexsen	Samet
South Academy of International Languages (17)	Aug-21	FWA	Messer Construction
South Pine Academy (17)	Aug-21	FWA	Metcon
West Mecklenburg Gym (17)	Aug-21	Moseley	Barnhill/D.A. Everett
Collinswood Language Academy (17)	Aug-20	Perkins Eastman	Turner Construction
Harding High School Renovation (17)	Aug-20	SFLA	Barnhill Contracting
Rea Farms STEAM Academy (13)	Aug-20	Little Diversified	Balfour Beatty
Ashley Park K-8 Conversion (13)	Aug-19	ADW	Turner Construction
Druid Hills K-8 Conversion (13)	Aug-19	ADW	Edifice, Inc.
Selwyn Elementary (13)	Aug-19	Clark Nexsen	Balfour Beatty
Charlotte Mecklenburg Academy (17)	Aug-19	KSQ	Edifice, Inc.
Davidson K-8 (13)	Aug-19	Little Diversified	Gilbane
CTE - North Mecklenburg High (13)	Aug-19	LS3P	Shiel Sexton
CTE - Garinger (13)	Mar-19	LS3P	Hostetter & Son
CTE - Independence (13)	Mar-19	LS3P	D.E. Brown
CTE - West Mecklenburg (13)	Mar-19	LS3P	Hostetter & Son
Charlotte East Language Academy (13)	Aug-18	Morris Berg	Edifice, Inc.
Myers Park High School Phase 3 (13)	Aug-18	Boomerang Design	BE&K
Northridge Middle (13)	Aug-18	Morris Berg	Barnhill Contracting
Myers Park High Bldg 2 (13)	Feb-18	Boomerang Design	BE&K
East Mecklenburg High Addition (13)	Jan-18	Bergman (fna Gantt Huberman)	Edifice, Inc.
J.M. Alexander Middle (13)	Aug-17	FWA Group	Balfour Beatty
Northwest School of the Arts Renovation (13)	Aug-17	Moseley	Turner Construction
Renaissance West STEAM Academy (13)	Aug-17	Little Diversified	Rodgers Construction
South Mecklenburg High Addition (13)	Jul-17	SFLA	Barnhill Contracting
Myers Park High Bldg 1 (13)	Sep-16	Boomerang	KBR
Statesville Road Elementary (13)	Aug-16	ADW	JE Dunn
Nations Ford Elementary (13)	Aug-16	Wash Hatem Nelson	Messer Construction
Olympic High Addition (13)	Aug-16	McMillan, Pazdan, Smith	Turner Construction
Lawrence Orr Elementary (07)	Aug-15	Cort Architectural Group	DH Griffin/Metcon
Parkside Elementary (07)	Aug-15	Wash Hatem Nelson	Clancy & Theys
Hawthorne High Renovations (07)	Aug-15	Morris-Berg	Balfour Beatty
Newell Elementary (07)	Aug-15	Perkins Eastman	New Atlantic Contracting
Ranson Middle (07)	Aug-15	Morris-Berg	Edifice, Inc.
Vance High	Jan-15	LS3P	Matthews Construction Co., Inc.

Projects closed prior to 2015 are not shown

CMS Capital Improvement Plan 2017 Bond Projects



PROJECT STATUS REPORT



Monthly Project Status 2017 Bond Summary

October 2023

Project	Current Project Estimate	Project Scope	** Occupy On	Design Phase	Construction Progress	Project Status
Ballantyne Ridge High School	\$ 148,962,116	New 100 classroom high school to relieve South Mecklenburg, Ardrey Kell and Myers Park HS.	August 2024	Complete	63 %	The Ballantyne Ridge High School (fka New High School (South, Ardrey Relief)) construction manager continued coordinating multiple trades on site. The mason continued with interior CMU installation to the building along with mobilizing the brick veneer installers for installation. All the exterior metal studs and sheathing have been installed along with temporary opening protection throughout the building. Spray fireproofing continued along with prime painting in designated areas. The MEP trades continued throughout in preparations for drywall installations. Equipment in the main mechanical and electrical rooms was set with piping and branch wire connections made. The athletic surface trade mobilized and began the main field installations and final grading of the practice field. The site work contractor continued with final grading, roadwork, the remaining site walls and installation of the bottomless culvert. The team continues to work with Charlotte Water and Duke Power to facilitate permanent power to the building.
Briarwood Elementary School (17)	\$ 31,243,066	45-classroom replacement facility; replaces school built in 1956.	August 2021	Complete	100 %	Project is complete.
Bruns Avenue Elementary School (17)	\$ 48,859,580	New 45-classroom elementary school (K-5); replaces old school built in 1969.	August 2024	Complete	42 %	The Bruns Elementary School Replacement construction manager is progressing with enclosing the building. The exterior sheathing was installed followed by spray foam insulation on 50% of the building. The trades are working diligently on the interior with MEP rough-ins taking place in all areas, above ceiling and in wall. The site work contractor is working on miscellaneous roof and area drains.

Monthly Project Status

2017 Bond Summary

October 2023

Project	Current Project Estimate	Project Scope	** Occupy On	Design Phase	Construction Progress	Project Status
Career and Technology Education (17)	\$ 6,984,007	Phase I CTE upgrades at Olympic, Harding, Garinger and South Mecklenburg.	January 2022	Complete	100 %	Project is complete.
Charlotte-Mecklenburg Academy (17)	\$ 17,699,220	New EC school located on the old Statesville Elementary School site.	August 2019	Complete	100 %	Project is complete.
Collinswood Language Academy (17)	\$ 41,401,384	New 63-classroom K-8 facility on the site of the Smith Family Center.	August 2020	Complete	100 %	Project is complete.
E.E. Waddell (17)	\$ 5,137,367	Repurpose current E.E. Waddell to reopen as a magnet high school.	August 2023	Complete	100 %	Project is complete.
East Mecklenburg High School (17)	\$ 10,231,911	This project will provide for the design, and construction of a new 30 classroom building.	August 2022	Complete	100 %	Project is complete.
Esperanza Global Academy (17)	\$ 45,297,022	New 45-classroom elementary school to relieve Windsor, Winterfield, and Idlewild ES.	August 2023	Complete	100 %	The Esperanza Global Academy (fka New ES Windsor, Winterfield, Idlewild Relief) construction manager continues to work on building commissioning and is nearing completion. Punch list and project closeout continues.
Garinger High School (17)	\$ 5,236,979	Project includes the design and construction for renovations of 300 building and a new 16 classroom building.	January 2023	Complete	100 %	Project is complete.
Grove Park Elementary School (17)	\$ 44,079,387	New 45-classroom elementary school; relieves overcrowding at Hidden Valley, J.W. Grier, Newell.	August 2023	Complete	100 %	The Grove Park Elementary School (fka New ES Hidden Valley, JW Grier, Newell) construction manager continues to work on building commissioning and is nearing completion. Punch list and project closeout continues.
Harding High School (17)	\$ 13,747,878	Renovation of the kitchen, cafeteria, existing gym (aux) and the addition of a new gym.	August 2020	Complete	100 %	Project is complete.
JT Williams (17)	\$ 17,032,600	Project includes building renovations to J.T. Williams Montessori magnet.	August 2023	Complete	99 %	The construction manager for JT Williams Secondary Montessori is nearing completion with building commissioning. RTU's have been replaced with permanent units. The project is now in the closeout phase.

Monthly Project Status

2017 Bond Summary

October 2023

Project	Current Project Estimate	Project Scope	** Occupy On	Design Phase	Construction Progress	Project Status
Lansdowne Elementary School (17)	\$ 33,554,188	New 45-classroom school; replaces old school built in 1959 and relieve crowding at Elizabeth Lane ES.	August 2022	Complete	100 %	The Lansdowne Elementary School playfield has been seeded and straw installed. The site contractor continues to work on stabilizing the site. Erosion control perimeter silt fence remains as grassing progresses. The new playgrounds have been installed and opened for students.
Lincoln Heights Elementary School (17)	\$ 4,588,675	Repurpose and reopen as magnet school.	August 2023	Complete	100 %	The Lincoln Heights Montessori School repurpose project renovations are complete. The project is now in the closeout phase.
Mint Hill Elementary School (17)	\$ 29,480,274	New 45-classroom elementary school; relieves crowding at Bain, Lebanon Road, Piney Grove.	August 2022	Complete	100 %	Project is complete.
Montclair Elementary School (17)	\$ 28,200,634	New 45-classroom replacement facility replacing school built in 1958.	August 2020	Complete	100 %	Project is complete.
Mountain Island Lake Academy (17)	\$ 13,239,686	K-8 Phase 2 - New gymnasium and specialty classrooms.	August 2023	Complete	100 %	The Mountain Island Lake Academy Gym/Classroom Addition construction manager is working on their closeout activities along with punch list items. The new building is occupied.
New Elementary School (Elon, Hawk Ridge, Polo Relief) (17)	\$ 60,641,760	New 45-classroom elementary school to relieve Elon, Hawk Ridge, Polo.	August 2024	Complete	68 %	The New Elementary School (Elon, Hawk Ridge, Polo Relief) construction manager continues to manage multiple trades on the project. MEP continued with above ceiling and in wall rough-ins throughout the building. The glass and glazing contractor progressed throughout the building with windows and storefront. The painter, tile and ceiling trades mobilized to the site and began installations in designated areas. The site work contractor continued with installations on Beau Riley Road and final grading around the building. The offsite roadwork contractor mobilized and began clearing and grubbing along with minor grading work.
North Academy of World Languages (17)	\$ 41,742,062	New 66 classroom K-8 Language Immersion facility located on the old J.M. Alexander Middle School site.	August 2021	Complete	100 %	Project is complete.

Monthly Project Status

2017 Bond Summary

October 2023

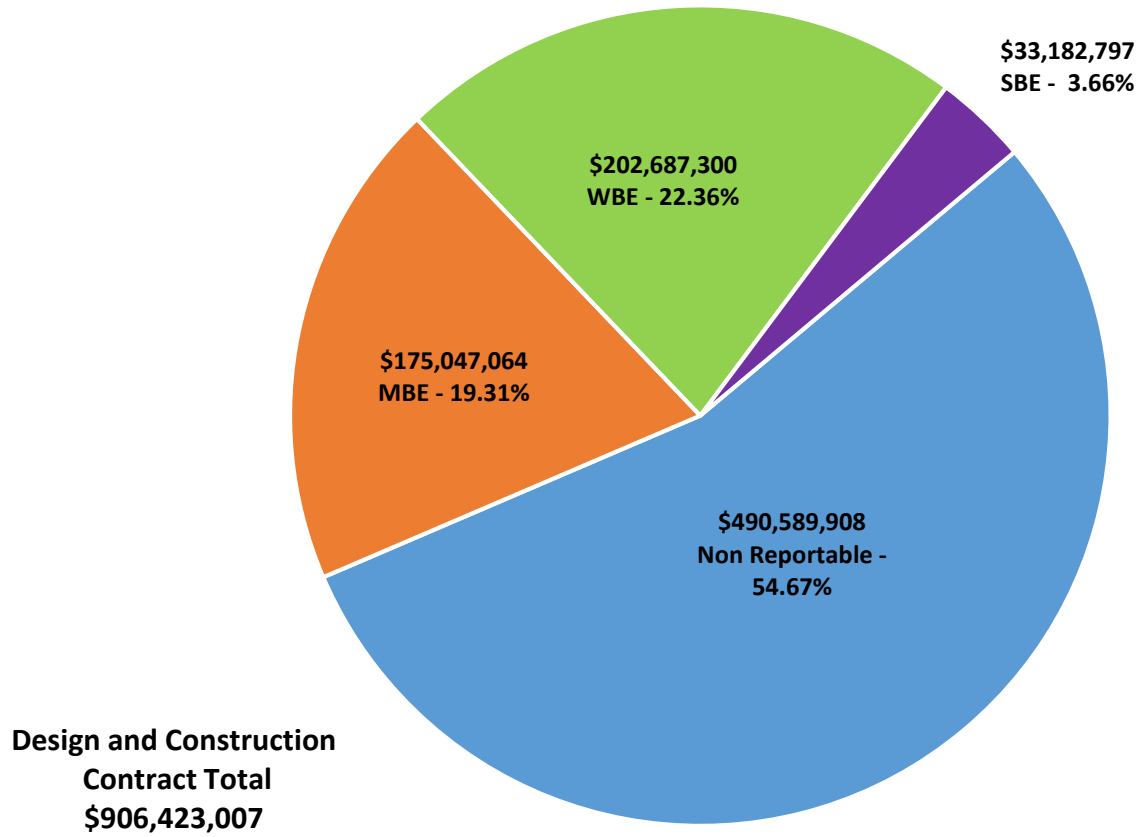
Project	Current Project Estimate	Project Scope	** Occupy On	Design Phase	Construction Progress	Project Status
Northwest School of the Arts (17)	\$ 12,167,000	Replace classroom buildings B&D and build classroom addition that supports program. 1st phase includes parking and U/G stormwater.	January 2025	Complete	38 %	The Northwest School of the Arts construction manager continued on Phase 1 installing the underground detention system and began final grading the site. The electrician mobilized and installed underground conduit for the new light poles. Preparations began for the new domestic water, fire line and sewer connections. The Phase 1 scope includes underground storm water detention system and new car parking lot in preparation for the new building in Phase 2.
Palisades High School (17)	\$ 107,592,534	New 100 classroom high school; relieves crowding at Olympic High School.	August 2022	Complete	100 %	Project is complete.
Shamrock Gardens Elementary School (17)	\$ 30,084,692	New 45-classroom replacement facility.	August 2022	Complete	100 %	Project is complete.
Sharon Elementary School (17)	\$ 9,125,862	Add 16 classroom building and increase capacity of cafeteria.	August 2021	Complete	100 %	Project is complete.
South Academy of International Languages (17)	\$ 40,669,909	New 71 classroom K-8 Language Immersion facility located on the old Nations Ford Elementary School site.	August 2021	Complete	100 %	Project is complete.
South Mecklenburg High School (17)	\$ 17,322,927	Renovate/replace two classroom buildings built in 1958 to upgrade learning conditions.	January 2025	Complete	3 %	The South Mecklenburg High School construction manager has mobilized to start the new three-story classroom building adjacent to the F Building. The new building will house JROTC and Arts. The contractors are working through material submittals and layout; construction is scheduled to start in November.
South Pine Academy (17)	\$ 30,477,421	New 45-classroom elementary school to relieve Nations Ford, Sterling, and Steele Creek.	August 2021	Complete	100 %	Project is complete.
West Charlotte High School (17)	\$ 104,413,163	New 100 classroom school to replace current facility built in 1954.	August 2022	Complete	99 %	The West Charlotte High School construction manager is substantially complete with Phase 2. Occupancy approvals have been granted for all athletic buildings. Baseball and Softball fields are complete. Punch list and project closeout continues.
West Mecklenburg High School (17)	\$ 6,260,654	Provide new gymnasium, the existing gymnasium will become the auxilliary.	August 2021	Complete	100 %	Project is complete.

MWSBE PARTICIPATION REPORT

Facility	Contract Amount	African American MBE\$	%	Other MBE \$	%	Total MBE \$	%	Other WBE \$	%	Other SBE \$	%	Total	%
<u>Briarwood Elementary School (17)</u>	\$28,277,548	\$4,038,457	14.28%	\$2,135,619	7.55%	\$6,174,076	21.83%	\$2,187,249	7.73%	\$187,102	0.66%	\$8,548,427	30.23%
<u>Bruns Avenue Elementary School (17)</u>	\$44,695,023	\$3,991,563	8.93%	\$3,833,621	8.58%	\$7,825,184	17.51%	\$8,533,002	19.09%	\$2,436,151	5.45%	\$18,794,337	42.05%
<u>Career and Technology Education (17)</u>	\$6,832,606	\$546,203	7.99%	\$452,980	6.63%	\$999,184	14.62%	\$392,157	5.74%	\$65,475	0.96%	\$1,456,815	21.32%
<u>Charlotte-Mecklenburg Academy (17)</u>	\$17,035,852	\$198,536	1.17%	\$1,031,692	6.06%	\$1,230,228	7.22%	\$928,655	5.45%	\$13,200	0.08%	\$2,172,083	12.75%
<u>Collinswood Language Academy (17)</u>	\$38,527,704	\$649,307	1.69%	\$1,613,104	4.19%	\$2,262,411	5.87%	\$11,363,565	29.49%	\$8,328	0.02%	\$13,634,304	35.39%
<u>E.E. Waddell (17)</u>	\$2,141,097	\$0	0.00%	\$0	0.00%	\$0	0.00%	\$59,254	2.77%	\$0	0.00%	\$59,254	2.77%
<u>East Mecklenburg High School (17)</u>	\$12,642,198	\$603,811	4.78%	\$532,460	4.21%	\$1,136,271	8.99%	\$490,364	3.88%	\$681,075	5.39%	\$2,307,710	18.25%
<u>Esperanza Global Academy (17)</u>	\$41,222,598	\$8,292,015	20.12%	\$4,662,363	11.31%	\$12,954,378	31.43%	\$24,143,175	58.57%	\$1,512,572	3.67%	\$38,610,125	93.66%
<u>Garinger High School (17)</u>	\$3,382,522	\$98,773	2.92%	\$291,746	8.63%	\$390,520	11.55%	\$390,676	11.55%	\$251,932	7.45%	\$1,033,127	30.54%
<u>Grove Park Elementary School (17)</u>	\$38,708,900	\$4,897,634	12.65%	\$5,138,568	13.27%	\$10,036,203	25.93%	\$2,302,300	5.95%	\$49,132	0.13%	\$12,387,635	32.00%
<u>Harding High School (17)</u>	\$13,015,986	\$1,504,505	11.56%	\$309,667	2.38%	\$1,814,172	13.94%	\$4,050,417	31.12%	\$36,861	0.28%	\$5,901,449	45.34%
<u>JT Williams (17)</u>	\$15,513,502	\$733,661	4.73%	\$373,832	2.41%	\$1,107,494	7.14%	\$3,720,335	23.98%	\$51,800	0.33%	\$4,879,628	31.45%
<u>Lansdowne Elementary School (17)</u>	\$30,736,689	\$2,809,680	9.14%	\$877,274	2.85%	\$3,686,954	12.00%	\$2,266,647	7.37%	\$222,210	0.72%	\$6,175,811	20.09%
<u>Lincoln Heights Elementary School (17)</u>	\$2,698,300	\$318,959	11.82%	\$18,800	0.70%	\$337,759	12.52%	\$56,330	2.09%	\$74,503	2.76%	\$468,592	17.37%
<u>Mint Hill Elementary School (17)</u>	\$25,896,540	\$5,223,675	20.17%	\$17,791,909	68.70%	\$23,015,584	88.88%	\$1,192,408	4.60%	\$308,370	1.19%	\$24,516,362	94.67%
<u>Montclair Elementary School (17)</u>	\$26,093,784	\$3,593,852	13.77%	\$2,341,048	8.97%	\$5,934,900	22.74%	\$5,775,745	22.13%	\$493,707	1.89%	\$12,204,352	46.77%
<u>Mountain Island Lake Academy (17)</u>	\$12,514,576	\$175,291	1.40%	\$833,532	6.66%	\$1,008,823	8.06%	\$870,093	6.95%	\$15,300	0.12%	\$1,894,216	15.14%
<u>New Elementary School (Elon, Hawk R</u>	\$45,632,799	\$5,804,906	12.72%	\$1,535,251	3.36%	\$7,340,157	16.09%	\$10,823,262	23.72%	\$2,856,486	6.26%	\$21,019,905	46.06%
<u>New High School (South, Ardrey) (17)</u>	\$136,112,452	\$3,143,723	2.31%	\$4,927,792	3.62%	\$8,071,515	5.93%	\$6,966,093	5.12%	\$9,971,427	7.33%	\$25,009,035	18.37%
<u>North Academy of World Languages (</u>	\$38,092,894	\$1,770,068	4.65%	\$1,575,864	4.14%	\$3,345,931	8.78%	\$3,473,149	9.12%	\$436,793	1.15%	\$7,255,873	19.05%
<u>Northwest School of the Arts (17)</u>	\$9,062,449	\$0	0.00%	\$208,650	2.30%	\$208,650	2.30%	\$100,625	1.11%	\$0	0.00%	\$309,275	3.41%
<u>Palisades High School (17)</u>	\$98,043,336	\$13,482,757	13.75%	\$7,641,104	7.79%	\$21,123,862	21.55%	\$8,317,153	8.48%	\$7,698,589	7.85%	\$37,139,603	37.88%
<u>Shamrock Gardens Elementary School</u>	\$27,148,320	\$2,478,054	9.13%	\$1,636,383	6.03%	\$4,114,438	15.16%	\$21,087,460	77.68%	\$259,554	0.96%	\$25,461,452	93.79%
<u>Sharon Elementary School (17)</u>	\$8,534,491	\$326,844	3.83%	\$283,497	3.32%	\$610,341	7.15%	\$926,873	10.86%	\$217,984	2.55%	\$1,755,197	20.57%

Facility	Contract Amount	African American MBE\$	%	Other MBE \$	%	Total MBE \$	%	Other WBE \$	%	Other SBE \$	%	Total	%
<u>South Academy of International Langu</u>	\$37,073,557	\$6,023,142	16.25%	\$2,431,071	6.56%	\$8,454,213	22.80%	\$10,945,346	29.52%	\$313,999	0.85%	\$19,713,558	53.17%
<u>South Mecklenburg High School (17)</u>	\$15,573,691	\$420,088	2.70%	\$1,105,960	7.10%	\$1,526,048	9.80%	\$128,056	0.82%	\$0	0.00%	\$1,654,104	10.62%
<u>South Pine Academy (17)</u>	\$26,196,854	\$916,165	3.50%	\$19,052,520	72.73%	\$19,968,685	76.23%	\$4,342,256	16.58%	\$237,754	0.91%	\$24,548,695	93.71%
<u>West Charlotte High School (17)</u>	\$95,206,172	\$14,357,815	15.08%	\$5,218,058	5.48%	\$19,575,873	20.56%	\$65,599,651	68.90%	\$3,728,348	3.92%	\$88,903,872	93.38%
<u>West Mecklenburg High School (17)</u>	\$9,810,566	\$283,809	2.89%	\$509,403	5.19%	\$793,212	8.09%	\$1,255,006	12.79%	\$1,054,146	10.75%	\$3,102,365	31.62%
Grandtotal	\$906,423,007	\$86,683,294	9.56%	\$88,363,770	9.75%	\$175,047,064	19.31%	\$202,687,300	22.36%	\$33,182,797	3.66%	\$410,917,161	45.33%

MWSBE Participation 2017 Bond Projects



MONTHLY PROJECT PHOTOS

PROJECT PROGRESS PHOTOS



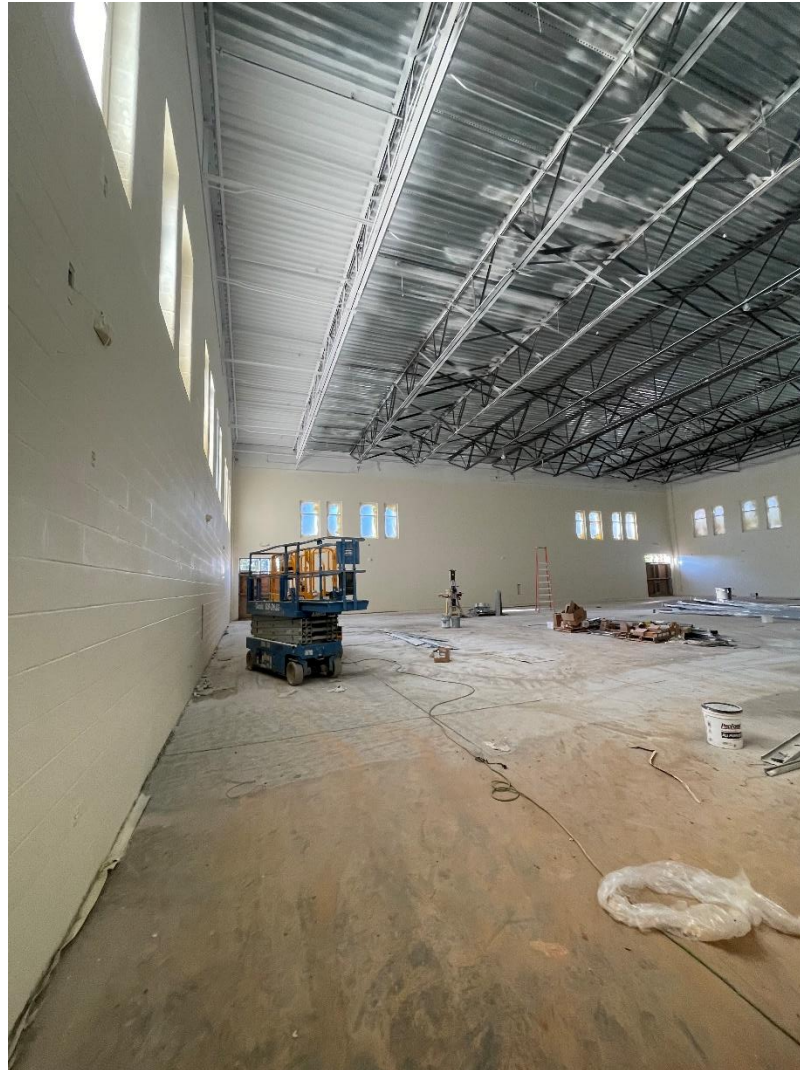
New ES Elon Park, Hawk Ridge, Polo Ridge

PROJECT PROGRESS PHOTOS



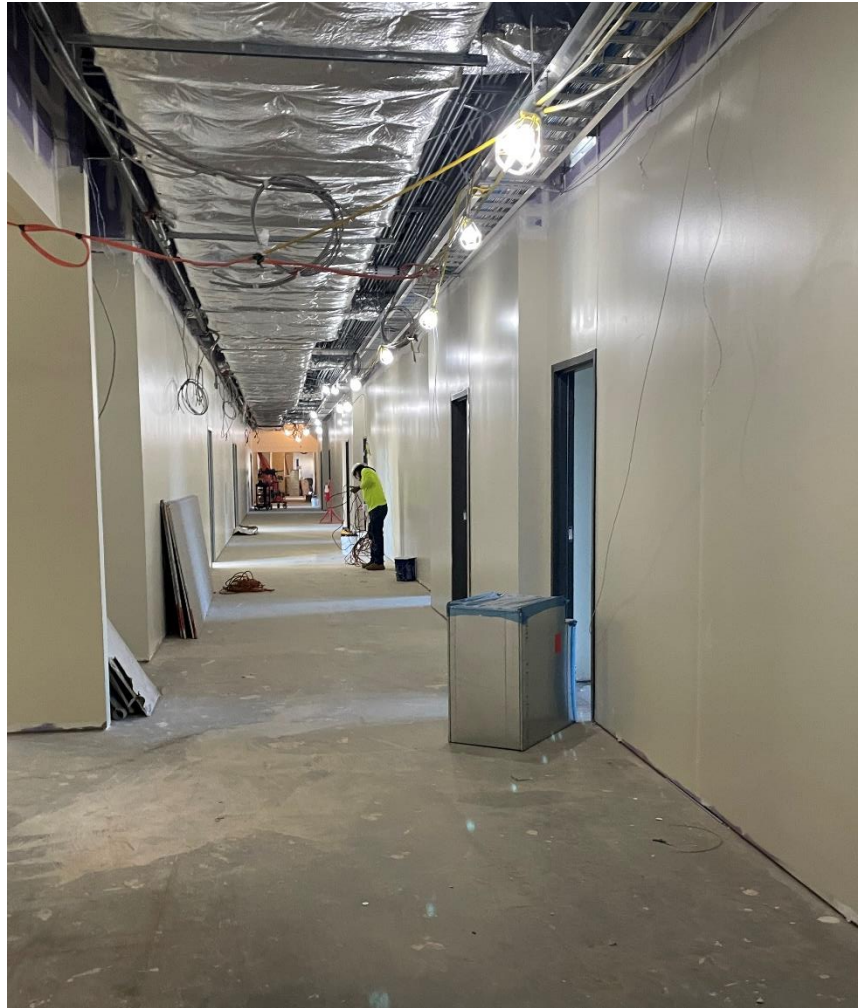
New ES Elon Park, Hawk Ridge, Polo Ridge

PROJECT PROGRESS PHOTOS



New ES Elon Park, Hawk Ridge, Polo Ridge

PROJECT PROGRESS PHOTOS



New ES Elon Park, Hawk Ridge, Polo Ridge

PROJECT PROGRESS PHOTOS



New HS Ardrey Kell, South Mecklenburg

PROJECT PROGRESS PHOTOS



New HS Ardrey Kell, South Mecklenburg

PROJECT PROGRESS PHOTOS



New HS Ardrey Kell, South Mecklenburg

PROJECT PROGRESS PHOTOS



New HS Ardrey Kell, South Mecklenburg

PROJECT PROGRESS PHOTOS



Bruns Elementary School Replacement

PROJECT PROGRESS PHOTOS



Bruns Elementary School Replacement

PROJECT PROGRESS PHOTOS



Bruns Elementary School Replacement

PROJECT PROGRESS PHOTOS



Northwest School of the Arts – Phase 2

PROJECT PROGRESS PHOTOS



Northwest School of the Arts – Phase 1

PROJECT PROGRESS PHOTOS



South Mecklenburg HS - Addition

PROJECT CONTROLS

CHARLOTTE-MECKLENBURG BOARD OF EDUCATION
2013 BOND SERIES-CAPITAL IMPROVEMENT PROGRAMS
BUDGET STATUS REPORT

	Original Project Budget	Current Project Budget	Committed Amount	Approved Change Orders	Total Committed	Pending Commitments	To Be Committed	Prev Paid To Date	Paid To Date	Balance To Complete	Monthly Expenditure
	(A)	(B)	(C)	(D)	(E)=C+D	(F)	(G)=(B-E-F)	(H)	(I)	(J)=(B-I)	(K)=(I-H)
<u>A. REPLACEMENT & RENOVATIONS</u>											
1 Career & Technology Education Institutes Phase 1:	\$8,640,000	\$20,274,950	\$8,352,614	\$11,886,062	\$20,238,676	\$0	\$36,275	\$18,294,498	\$20,238,674	\$36,277	\$1,944,176
2 Davidson K-8 Conversion	\$9,500,000	\$13,461,149	\$2,131,151	\$11,329,998	\$13,461,149	\$0	\$0	\$13,461,149	\$13,461,149	\$0	\$0
3 J.M. Alexander Middle Replacement	\$30,672,000	\$29,845,539	\$4,502,518	\$25,343,021	\$29,845,539	\$0	\$0	\$29,845,539	\$29,845,539	\$0	\$0
4 Nations Ford Elementary Replacement	\$19,440,000	\$19,231,604	\$3,958,871	\$15,272,733	\$19,231,604	\$0	\$0	\$19,231,604	\$19,231,604	\$0	\$0
5 Northwest School of the Arts	\$12,420,000	\$12,868,718	\$2,047,917	\$10,820,801	\$12,868,718	\$0	\$0	\$12,868,719	\$12,868,719	\$0	\$0
6 Oakhurst STEAM Magnet Elementary/Starmount	\$5,940,000	\$5,407,812	\$3,471,397	\$1,936,415	\$5,407,812	\$0	\$0	\$5,407,812	\$5,407,812	\$0	\$0
7 Pre-K-8 Conversions Phase II: Ashley Park/ Bruns	\$24,732,000	\$19,700,807	\$4,167,671	\$15,533,138	\$19,700,809	\$0	\$0	\$19,700,807	\$19,700,807	\$0	\$0
8 Selwyn Elementary	\$2,592,000	\$4,624,831	\$744,799	\$3,880,032	\$4,624,831	\$0	\$0	\$4,624,831	\$4,624,831	\$0	\$0
9 Statesville Road Elementary	\$20,340,000	\$20,648,509	\$5,081,473	\$15,567,037	\$20,648,509	\$0	\$0	\$20,648,509	\$20,648,509	\$0	\$0
10 West Mecklenburg HS	\$0	\$3,993,543	\$3,993,543	\$0	\$3,993,543	\$0	\$0	\$3,993,543	\$3,993,543	\$0	\$0
Total Replacement & Renovations	\$134,276,000	\$150,057,461	\$38,451,953	\$111,569,237	\$150,021,190	\$0	\$36,276	\$148,077,010	\$150,021,186	\$36,275	\$1,944,176
<u>B. RESPONSE TO ENROLLMENT GROWTH</u>											
1 East Mecklenburg High Addition	\$12,744,000	\$12,083,804	\$4,465,200	\$7,618,603	\$12,083,803	\$0	\$0	\$12,083,803	\$12,083,803	\$0	\$0
2 Myers Park High Addition	\$22,248,000	\$11,040,942	\$1,207,493	\$9,833,448	\$11,040,942	\$0	\$0	\$11,040,941	\$11,040,941	\$0	\$0
3 Northridge Middle Addition	\$6,448,000	\$6,366,170	\$2,114,306	\$4,251,865	\$6,366,171	\$0	\$0	\$6,366,171	\$6,366,171	\$0	\$0
4 Olympic High Addition/Renovation	\$8,964,000	\$8,947,310	\$2,002,694	\$6,944,615	\$8,947,310	\$0	\$0	\$8,947,310	\$8,947,310	\$0	\$0
5 South Mecklenburg High Addition	\$18,360,000	\$16,307,355	\$2,922,282	\$13,385,073	\$16,307,355	\$0	\$0	\$16,307,355	\$16,307,355	\$0	\$0
6 Charlotte East Language Academy (FKA -New Lang	\$30,376,000	\$31,387,929	\$5,740,182	\$25,647,747	\$31,387,929	\$0	\$0	\$31,387,929	\$31,387,929	\$0	\$0
7 Rea Farms STEAM Academy	\$31,376,000	\$38,898,906	\$9,077,465	\$29,821,441	\$38,898,906	\$0	\$0	\$38,898,906	\$38,898,906	\$0	\$0
8 Renaissance West STEAM Academy (FKA New Pre-	\$30,376,000	\$31,698,952	\$5,667,388	\$26,031,564	\$31,698,952	\$0	\$0	\$31,698,952	\$31,698,952	\$0	\$0
9 New High School - South Meck/Ardrey Kell Relief *	\$0	\$9,278,699	\$9,278,699	\$0	\$9,278,699	\$0	\$0	\$9,278,699	\$9,278,699	\$0	\$0
Total Response to Enrollment Growth	\$160,892,000	\$166,010,067	\$42,475,710	\$123,534,357	\$166,010,067	\$0	\$0	\$166,010,066	\$166,010,066	\$0	\$0
<u>C. CONTINGENCY</u>											
	\$0	\$0	\$0	\$0	\$0	\$0	\$0	\$0	\$0	\$0	\$0
Total Contingency	\$0	\$0	\$0	\$0	\$0	\$0	\$0	\$0	\$0	\$0	\$0
TOTAL LOCAL BOND PROGRAM	\$295,168,000	\$316,067,527	\$80,927,663	\$235,103,594	\$316,031,257	\$0	\$36,276	\$314,087,076	\$316,031,252	\$36,276	\$1,944,176

Original project estimated costs approved by the Board Of Education on July 23, 2013 and approved by the voters of Mecklenburg County on November 5, 2013.

Note: Mecklenburg County's appropriated interest from COPS to increase funding for the 2013 Bond Program.

CHARLOTTE-MECKLENBURG BOARD OF EDUCATION
2017 BOND SERIES-CAPITAL IMPROVEMENT PROGRAMS
BUDGET STATUS REPORT

	Original Project Budget	Current Project Budget	Committed Amount	Approved Change Orders	Total Committed	Pending Commitments	To Be Committed	Prev Paid To Date	Paid To Date	Balance To Complete	Monthly Expenditure
	(A)	(B)	(C)	(D)	(E)=C+D	(F)	(G)=(B-E-F)	(H)	(I)	(J)=(B-I)	(K)=(I-H)
<u>A. REPLACEMENT & RENOVATIONS</u>											
1 Briarwood Elementary *	\$29,091,619	\$31,243,066	\$4,730,710	\$26,410,339	\$31,141,049	\$0	\$102,017	\$31,135,878	\$31,135,878	\$107,188	\$0
2 Bruns Academy Replacement	\$34,207,808	\$48,859,580	\$5,724,353	\$42,406,336	\$48,130,689	(\$4,295)	\$733,186	\$14,313,059	\$16,576,992	\$32,282,588	\$2,263,934
3 Career & Technology Education Upgrades	\$10,101,734	\$6,984,007	\$3,665,595	\$3,318,588	\$6,984,183	(\$176)	\$0	\$6,984,007	\$6,984,007	\$0	\$0
4 Collinswood K-8 *	\$44,172,540	\$41,401,384	\$4,916,632	\$36,484,752	\$41,401,384	\$0	\$0	\$41,401,384	\$41,401,384	\$0	\$0
5 East Mecklenburg HS	\$12,771,594	\$10,231,911	(\$1,659,510)	\$11,823,832	\$10,164,322	\$0	\$67,590	\$10,141,268	\$10,141,268	\$90,643	\$0
6 Garinger HS	\$13,936,979	\$5,236,979	\$666,118	\$3,534,819	\$4,200,936	\$0	\$1,036,043	\$3,542,602	\$3,795,726	\$1,441,253	\$253,124
7 Harding University High *	\$18,330,263	\$13,747,878	\$2,045,267	\$11,702,610	\$13,747,877	\$0	\$0	\$13,747,877	\$13,747,877	\$0	\$0
8 Charlotte-Mecklenburg Academy (FKA -EC Specialty	\$18,957,960	\$17,699,220	\$2,175,504	\$15,523,717	\$17,699,220	\$0	\$0	\$17,699,220	\$17,699,220	\$0	\$0
9 Lansdowne Elementary	\$29,391,270	\$33,554,188	\$3,974,822	\$29,426,290	\$33,401,113	\$41,075	\$112,001	\$32,459,066	\$32,459,639	\$1,094,549	\$573
10 Lincoln Heights Elementary	\$3,740,478	\$4,588,675	\$2,709,690	\$817,550	\$3,527,240	\$7,000	\$1,054,435	\$2,867,731	\$2,904,307	\$1,684,368	\$36,577
11 Montclair Elementary Replacement *	\$28,559,390	\$28,200,634	\$2,426,761	\$25,773,873	\$28,200,634	\$0	\$0	\$28,200,634	\$28,200,634	\$0	\$0
12 Mountain Island k-8	\$9,218,439	\$13,239,686	\$1,657,774	\$11,418,864	\$13,076,638	\$12,000	\$151,048	\$11,372,688	\$11,386,427	\$1,853,259	\$13,739
13 Northwest School of the Arts	\$17,632,202	\$12,167,000	\$5,255,942	\$4,700,259	\$9,956,201	\$0	\$2,210,799	\$2,527,037	\$3,674,653	\$8,492,347	\$1,147,616
14 Shamrock Gardens Elementary *	\$29,890,351	\$30,084,692	\$3,422,159	\$26,234,783	\$29,656,942	\$0	\$427,750	\$29,245,138	\$29,503,844	\$580,848	\$258,706
15 Sharon Elementary	\$7,706,528	\$9,125,862	\$1,430,125	\$7,675,679	\$9,105,804	\$0	\$20,058	\$9,079,791	\$9,079,791	\$46,071	\$0
16 South Mecklenburg HS	\$13,352,143	\$17,322,927	\$2,064,541	\$14,216,781	\$16,281,322	\$0	\$1,041,605	\$1,000,699	\$1,202,129	\$16,120,798	\$201,431
17 E.E. Waddell Magnet HS	\$4,571,709	\$5,137,367	\$2,945,755	\$356,383	\$3,302,138	\$0	\$1,835,229	\$2,747,883	\$2,812,501	\$2,324,866	\$64,618
18 West Charlotte HS Replacement	\$109,977,166	\$104,413,163	\$11,791,575	\$91,532,038	\$103,323,613	\$78,886	\$1,010,664	\$100,728,160	\$101,480,648	\$2,932,514	\$752,488
19 West Mecklenburg HS	\$11,065,440	\$6,260,654	(\$2,370,464)	\$8,631,118	\$6,260,654	\$0	\$0	\$6,260,654	\$6,260,654	\$0	\$0
20 John Taylor Williams	\$13,964,339	\$17,032,600	\$3,561,739	\$12,492,488	\$16,054,228	\$185,085	\$793,288	\$13,994,201	\$14,004,601	\$3,027,999	\$10,400
Total Replacement & Renovations	\$460,639,952	\$456,531,473	\$61,135,088	\$384,481,099	\$445,616,187	\$319,575	\$10,595,712	\$379,448,976	\$384,452,182	\$72,079,292	\$5,003,205
<u>B. RESPONSE TO ENROLLMENT GROWTH</u>											
1 South Academy of International Languages	\$45,359,367	\$40,669,909	\$5,969,503	\$34,700,138	\$40,669,641	\$0	\$268	\$40,586,977	\$40,586,977	\$82,932	\$0
2 North Academy of World Languages (FKA - New K-8	\$45,359,367	\$41,742,062	\$6,024,166	\$35,717,896	\$41,742,062	\$0	\$0	\$41,742,062	\$41,742,062	\$0	\$0
3 South Pine Academy (FKA - New ES Nations Ford, S	\$29,173,829	\$30,477,421	\$6,883,836	\$23,593,585	\$30,477,421	\$0	\$0	\$30,477,421	\$30,477,421	\$0	\$0
4 Mint Hill Elementary School	\$29,988,332	\$29,480,274	\$3,296,439	\$25,950,837	\$29,247,276	\$0	\$232,998	\$29,024,154	\$29,024,329	\$455,945	\$176
5 Esperanza Global Academy (FKA New ES - Windsor	\$30,422,230	\$45,297,022	\$13,211,395	\$31,553,502	\$44,764,897	\$110,825	\$421,300	\$38,021,878	\$40,279,500	\$5,017,522	\$2,257,623
6 New Elementary School - Elon/Hawk Ridge Relief *	\$30,426,712	\$60,641,761	\$16,375,648	\$43,557,251	\$59,932,899	\$116,395	\$592,467	\$41,618,966	\$43,268,906	\$17,372,854	\$1,649,940
7 Grove Park Elementary (FKA New ES - Hidden Valle	\$30,518,345	\$44,079,387	\$6,372,546	\$36,697,109	\$43,069,655	\$29,500	\$980,232	\$37,859,654	\$38,531,113	\$5,548,274	\$671,460
8 Palisades High School	\$109,908,793	\$107,592,534	\$10,856,885	\$96,372,205	\$107,229,090	\$20,042	\$343,402	\$105,630,625	\$105,696,283	\$1,896,251	\$65,658
9 New High School - South Meck/Ardrey Kell Relief *	\$110,287,621	\$148,962,116	\$9,055,978	\$130,671,339	\$139,727,317	\$663,270	\$8,571,529	\$75,504,842	\$78,474,040	\$70,488,076	\$2,969,198
Total Response to Enrollment Growth	\$461,444,596	\$548,942,486	\$78,046,396	\$458,813,861	\$536,860,257	\$940,032	\$11,142,197	\$440,466,579	\$448,080,632	\$100,861,854	\$7,614,054
<u>C. CONTINGENCY</u>											
	\$0	\$0	\$0	\$0	\$0	\$0	\$0	\$0	\$0	\$0	\$0
Total Contingency	\$0	\$0	\$0	\$0	\$0	\$0	\$0	\$0	\$0	\$0	\$0

CHARLOTTE-MECKLENBURG BOARD OF EDUCATION
2017 BOND SERIES-CAPITAL IMPROVEMENT PROGRAMS
BUDGET STATUS REPORT

	Original Project Budget	Current Project Budget	Committed Amount	Approved Change Orders	Total Committed	Pending Commitments	To Be Committed	Prev Paid To Date	Paid To Date	Balance To Complete	Monthly Expenditure
	(A)	(B)	(C)	(D)	(E)=C+D	(F)	(G)=(B-E-F)	(H)	(I)	(J)=(B-I)	(K)=(I-H)
TOTAL LOCAL BOND PROGRAM	\$922,084,548	\$1,005,473,960	\$139,181,484	\$843,294,960	\$982,476,444	\$1,259,607	\$21,737,909	\$819,915,555	\$832,532,814	\$172,941,145	\$12,617,259

Original project estimated costs approved by the Board Of Education on July 25, 2017 approved by the voters of Mecklenburg County on November 7, 2017.

*Project included in \$33.2M early funding approved by Board Of Education on August 9, 2016 and Mecklenburg Board of County Commissioners on September 6, 2016. On February 19, 2019 an additional \$8M was approved for New Elementary School - Elon/Hawk Ridge Relief site.

*Current Budget includes an additional \$89.2M to fund increase land and construction costs. The additional funds were approved by the Board of County Commissioners on June 16, 2020.

The New Elementary School - Elon/Hawk Ridge Relief current Budget includes 6.8M for Park and Recreation Project.

Bruns Academy Replacement current budget includes \$1.5M for Park and Recreation Project.

Current Program Budget reflects a reclass of \$7.4M in expenditures to 2007 Bond Program and \$14.4M in expenditures to 2013 Bond Program.

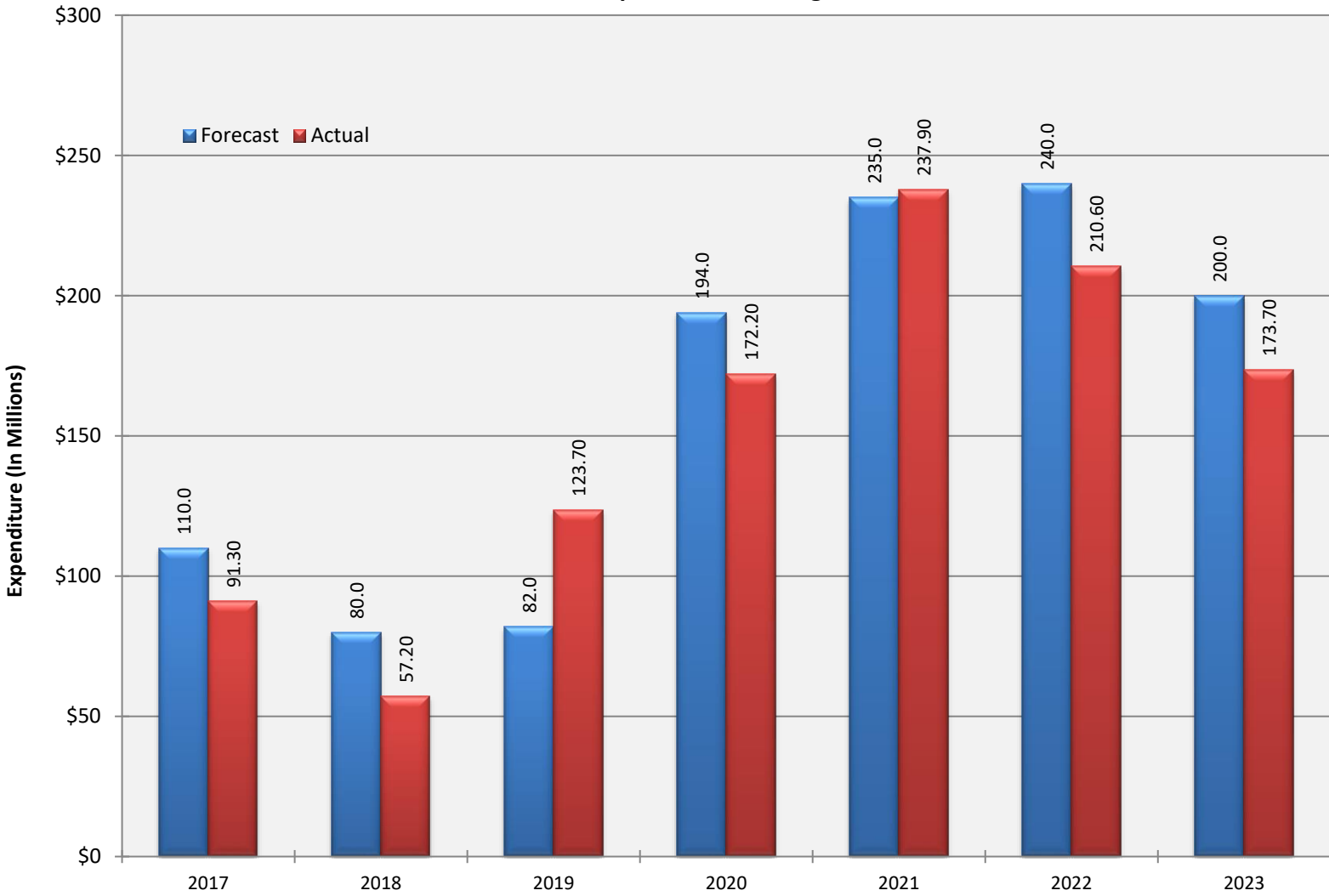
Charlotte-Mecklenburg Board of Education
Approved Construction or Repair Change Orders*
Reporting Period: October 2023

Funding Source	Project Name	Contractor	Description	Change Order Amount	Revised Contract Value
2017 Bond	West Charlotte High School (17)	RODGERS-HOLT BROTHERS, a Joint Venture	Sidewalk Revisions; Exterior Water Coolers; Dialer for Elevators; Add Swing Gate at Loop Road; Add Area Drains at Football Stadium Home Side; Additional Wall Tackboards; Curb Cut at Main Entrance; Add Wall Pack Light at Dumpster; Mobile Volleyball Equipment; Monitor for Built-In Trophy Case Wall at Omni; GFCI for Electric Water Coolers in Janitor Closets; 1988 Marquee ; Add Drain at Retaining Wall ; Add Sod at Main Entrance Gate; Reconcile unused Allowances; Future Parking Lot Numbers	\$0.00	88,823,672.00

* Not previously presented to the Board of Education for Approval (less than \$90,000)

EXPENDITURE SUMMARY

Forecast Expenditure versus
Actual Expenditures through October 2023



GLOSSARY

Glossary

- **Project Management** – This section includes updates from our project managers and describes the currently active construction projects. This includes from Board of Education award thru final completion.
- **Design and Bidding** – This section contains updates from our design managers on the projects currently in the design phase. This phase from design award to Board of Education award of construction.
- **Controls** – Section includes misc. updates from controls group including expenditures, related Board of Education awards during the reporting period, cash flow information. This section covers all projects from approved bond through final expenditures and bond close with the county.
- **MWSBE** – Contains updates from the MWSBE Director and team, including current activity and summaries of the participation by MWSBE providers on our program.
- **Bond Progress Summary** – Provides a summary of bond financials including bond value, committed/pending amounts, paid to date, expended this month.
- **Project Procurement Dates** - Next 90 Days major project bid activity.
- **Mobile Swing Space Utilization** – Includes a summary of program related swing space currently in use and the schedule of use.
- **Bond Summary Schedule** – Current program summary schedule including planned design, construction and FF&E. These activities are fed from detailed schedules and are fine-tuned as project information is available.
- **Project Contractor Teams**; Provides summary of turnover dates for completed/closed projects since 2010 including architects/designers and contractors.
- **School Site Location Maps** – General location of bond projects (2017) by type.
- **Project Status Report** – This section of the report provides a summary of the bond project scope, current estimate (all sources), planned occupancy/actual occupancy date. It also provides a current status of the design phase, construction progress and a brief update. The report currently includes 2013 and 2017 bond projects that have or will be completed after to August 2016.
- **MWSBE Participation Report** – The MWSBE report provides a summary of the participation on the 2013 & 2017 Bond funded projects.
- **Project Progress Photos** – Includes photos of active construction projects.
- **Budget Summary Reports** – These reports are by funding source and summarize financial activity to date on the projects. This includes original and current project estimates, committed values, amounts paid to date, balances and monthly expenditures.
- **Change Orders < \$90,000** – This month's approved construction or repair change orders < \$90,000.
- **Expenditure Summary** – Provides a summary of Bond Expenditures by calendar year.