

Capital Improvement Program

Monthly Bond Report
December 2022



New High School Ardrey Kell, South Mecklenburg Relief



CAPITAL PROGRAM SERVICES Capital Improvement Program

DECEMBER 2022 **MONTHLY BOND REPORT**

PROGRAM OVERVIEW

- Project Management
- Design and Bidding
- Controls
- MWSBE
- Bond Progress Summary
- Project Procurement - Next 90 Days
- Swing Space Utilization
- Bond Summary Schedule
- Project Contractor Teams; Projects in Design/Construction and Substantially Completed/Closed
- School Site Location Maps
 - Elementary Schools
 - Middle Schools
 - High Schools & Specialty Schools

PROJECT STATUS REPORT

MWSBE PARTICIPATION REPORT

PROJECT PROGRESS PHOTOS

PROJECT CONTROLS

- Budget Summary Reports
 - 2013 Bond Series
 - 2017 Bond Series
- Change Orders < \$90,000
- Expenditure Summary

GLOSSARY

PROGRAM OVERVIEW

PROJECT MANAGEMENT

The following is a summary of the activity on the bond funded projects in construction during the month of December.

The contractor for **E.E. Waddell** has completed the renovations. The project is now in closeout.

The construction manager for the **Garinger Addition and Renovation** project completed final cleaning of the 300 building classrooms with the corridors to follow in January. The fire and domestic water taps were completed late December. The fire pump is schedule to start the beginning of January for final sign off from the Fire Marshall. The 300 Building renovations are scheduled to complete January 2023.

The construction manager for **JT Williams Secondary Montessori** is completing the site work and hardscapes associated with the 100 Building renovations, including the loading dock area behind the kitchen. The interior finishes including floor tile and finish paint are nearing completion. Supply chain issues are affecting delivery of the mechanical roof top units; this in conjunction with the timing of the required fire-line water taps will likely impact the 100 Building occupancy in early spring. The work on the modular classroom building continues, once completed it will be utilized for swing space while renovations in the 200 Building take place.

The **Lansdowne Elementary School** construction manager's trade contractors are completing the remaining punch list items in the new building after school hours. The old facility is now removed and final site grading for playfield installation is ongoing. New playgrounds are scheduled for installation in late February. The demolition and remaining site work will be completed in early 2023.

The **Mountain Island Lake Academy Gym/Classroom Addition** construction manager continued with load bearing masonry and prepared for steel in the classroom areas. The site work contractor continued with final grading and preparing the crane pad for steel erection the beginning of January. The new building is scheduled for occupancy August 2023.

The **New Elementary School (Elon, Hawk Ridge, Polo Relief)** construction manager completed the building footings, underground electrical and plumbing rough-ins. The mason continued with load bearing masonry walls in areas B and A. The recreation center footings were installed and below grade masonry continued. The project team is working to identify options to mitigate schedule impacts from the later and anticipated receipt of permits, masonry delays and potential supply chain issues. The road and signalization procurement package has been revised and will rebid in early 2023. The new 45-classroom elementary school is located across from the Ardrey Kell High School and is currently scheduled for occupancy August 2023.

The **New Elementary School (Hidden Valley, JW Grier, Newell Relief)** construction manager has set the stone for parking lot paving which will be scheduled as weather permits. Load bearing masonry and structural steel framing is now complete. The roof installation is progressing at cafeteria/kitchen area. Windows are being installed. The MEP trade contractors continue rough ins to support systems. Charlotte Water has scheduled the installation for the new water tap. The construction team continues to work through supply chain material delivery issues. This new 45-classroom school will be located next to Northridge Middle School and is scheduled for occupancy August 2023.

The **New Elementary School (Windsor Park, Winterfield, Idlewild Relief)** construction manager continues work at the site retaining walls allowing grades to be brought to finish. The MEP trades are now working on above ceiling and in-wall rough ins throughout. The structural steel framing, load bearing masonry and roofing installation continues. The teams continue evaluating the construction schedule for options to mitigate the impacts from the Duke Power line relocation. This new 45-classroom school is currently scheduled for occupancy August 2023.

The **New High School (South, Ardrey Relief)** construction manager continued with footing, below grade masonry installations in addition to load bearing masonry in the classroom wing. Area G and F underground plumbing and electrical is underway in preparation for the slab on grade. Sitework is ongoing including sanitary and storm installations throughout the site. The retaining wall contractor continued with the installation of the site retaining walls. The new 100-classroom relief high school is scheduled for occupancy August 2024.

The **West Charlotte High School** construction manager continues to work on the phase two (demolition/sitework) phase of the project. All structures are on the ground allowing the site contractor to focus on bringing the site to final grade. Once grades are established, the parking lots and ball fields will follow. The team continues to coordinate the project with school administration. The demolition/and sitework phase is scheduled for completion in August 2023.

DESIGN AND BIDDING

The following is a summary of the activity on the bond funded projects in design and bidding phase during the month of December.

The **Bruns Avenue Elementary Replacement** construction documents have been received. CDOT accepted the traffic memorandum scope and associated construction phasing plans. The CM issued the remaining bid packages (phase 2) and will receive bids in January. This new 45-classroom school will incorporate a full-size gym and associated areas in coordination with Charlotte-Mecklenburg Parks & Recreation. Construction is scheduled to start the first quarter of 2023 and occupancy is scheduled August 2024.

The **Lincoln Heights** repurpose project will begin construction activities in January to be ready for occupancy in August 23. The teams are currently coordinating work related to the Trillium Montessori into the plan.

The **Northwest School of the Arts** project continues to progress in the schematic phase. The design scope includes a classroom building that replaces the existing visual arts building, building D and site improvements. The project will be completed in multiple phases, the parking modifications are scheduled to begin in the fall of 2023.

The **South Mecklenburg High School Addition** project 50% construction documents have been received and are under review. Mobiles will be relocated summer 2023 to allow construction on the new building to begin in the fall of 2023 and be available for occupancy January 2025.

CONTROLS

Expenditures for the month of December were \$12.5M. This brings our fiscal year to date total to \$98.3M against the 2023 fiscal year cash flow projection of \$230M. Procurement of furniture, fixtures and equipment has begun for projects coming online this fiscal year. Additionally, the Controls team continues the reconciliation and closeout of completed 2013 and 2017 bond projects. Available funding identified from completed purchase orders reviewed and reconciliations are being accumulated to be used for future capital needs.

The Controls team continues to submit notices of potential changes at school sites so senior staff can adequately evaluate any issues. Additionally, the Controls team continues the processing of contracts, invoices, preparing notices of potential change, change orders, pay applications, and check requests for projects under construction. Captured construction cost data is used to prepare financial reports such as detailed cost reports, budget summaries, reconciliation to CMS books, revisions to and updated cash flows and complete special financial requests by CMS and Mecklenburg County. This process, along with data compilation and management, allows senior staff to provide the proper guidance/direction and accurate information to the program stakeholders.

No Bond related consent items were submitted for Board of Education approval during the month of December.

MWSBE

As of December 2022, the overall MWSBE utilization percentage related to design and construction of the 2017 bond projects is 44.02% which includes 18.34% participation by minority contractors, 24.13% by women contractors and 1.56% participation by small business contractors. This accounts for more than \$367 million of utilization by Minority, Women and Small Business Contractors.

The Diversity & Inclusion Office of Charlotte-Mecklenburg Schools continued to conduct several individual virtual orientations with new MWSBE contractors and prime contractors. In addition, team members also attended/hosted the following outreach sessions/pre-bid meetings and/or workforce development opportunities:

Outreach Sessions:

- Mecklenburg County Business Launch Pad
- MMCA December Meeting
- Gaston County Minority and Women Business Meeting
- Carolinas-Virginia Minority Supplier Development Council MBE Summit
- Bruns Academy pre-bid meeting hosted by Edifice

Over the next month, team members will continue to work with contractors interested in bidding on the upcoming school projects utilizing various virtual tools to communicate. Contractors are encouraged to review bid advertisements in Charlotte Observer and register as a vendor on the North Carolina Interactive Purchasing System for notification of the various opportunities.

BOND PROGRESS SUMMARY As of December 2022

Funding Source and Value		Amount Committed/Pending	Amount Paid to Date	Amount Expended This Period
'13 Bond	\$316,067,527	\$314,487,141	\$313,500,300	\$226,332
'17 Bond	\$1,018,618,062	\$937,179,446	\$661,366,588	\$12,219,529
Grand Total	\$1,334,685,589	\$1,251,666,587	\$974,866,888	\$12,445,861

UPCOMING MAJOR CONSTRUCTION PROCUREMENT DATES *Three Month Look Ahead*

School Name

Bid Dates*

Bruns Academy –Phase 2 Procurement
Managed by Edifice

January 2023

** NOTE: Work In Progress...Dates Subject to Change.*

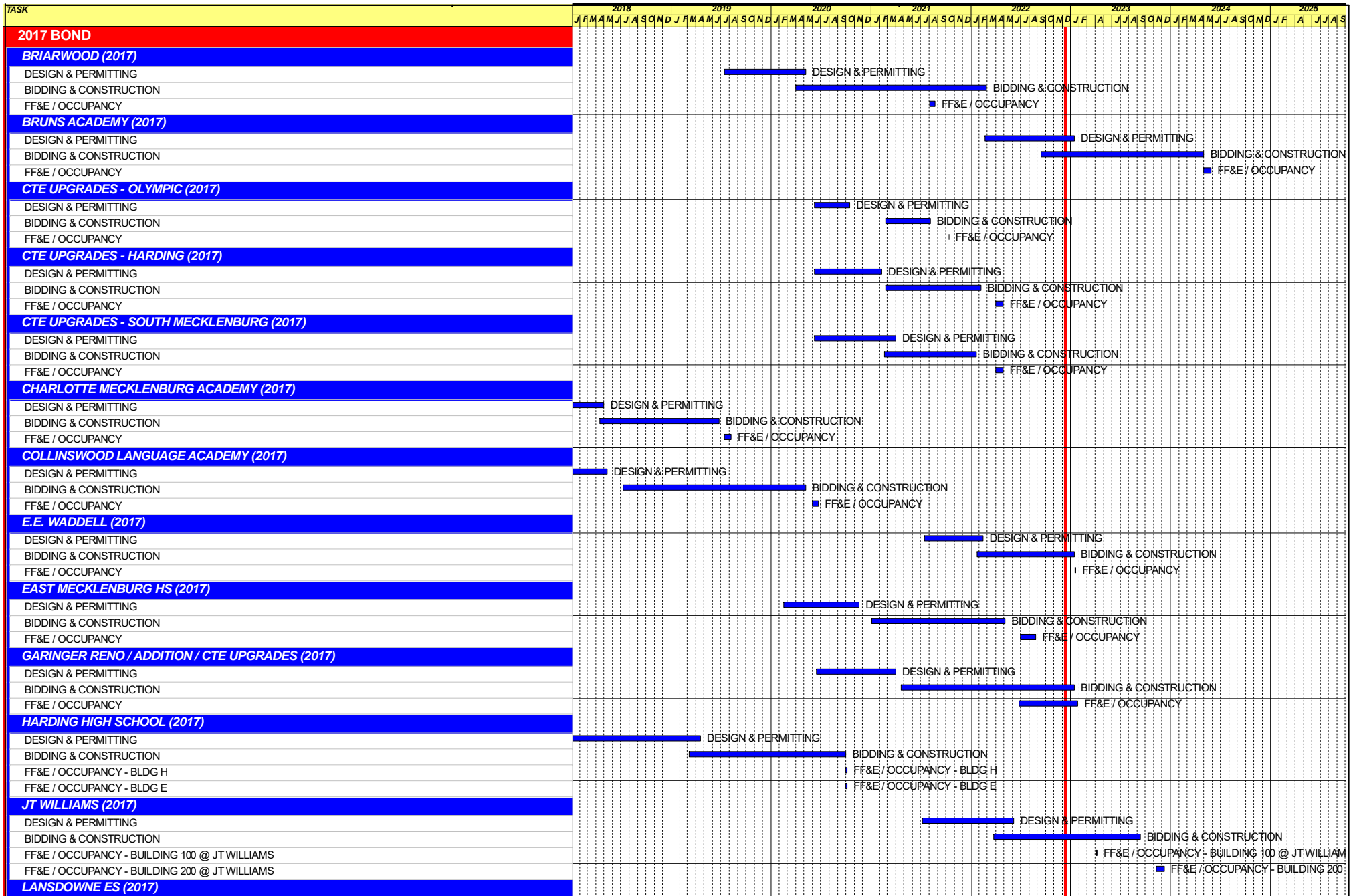
SWING SPACE UTILIZATION

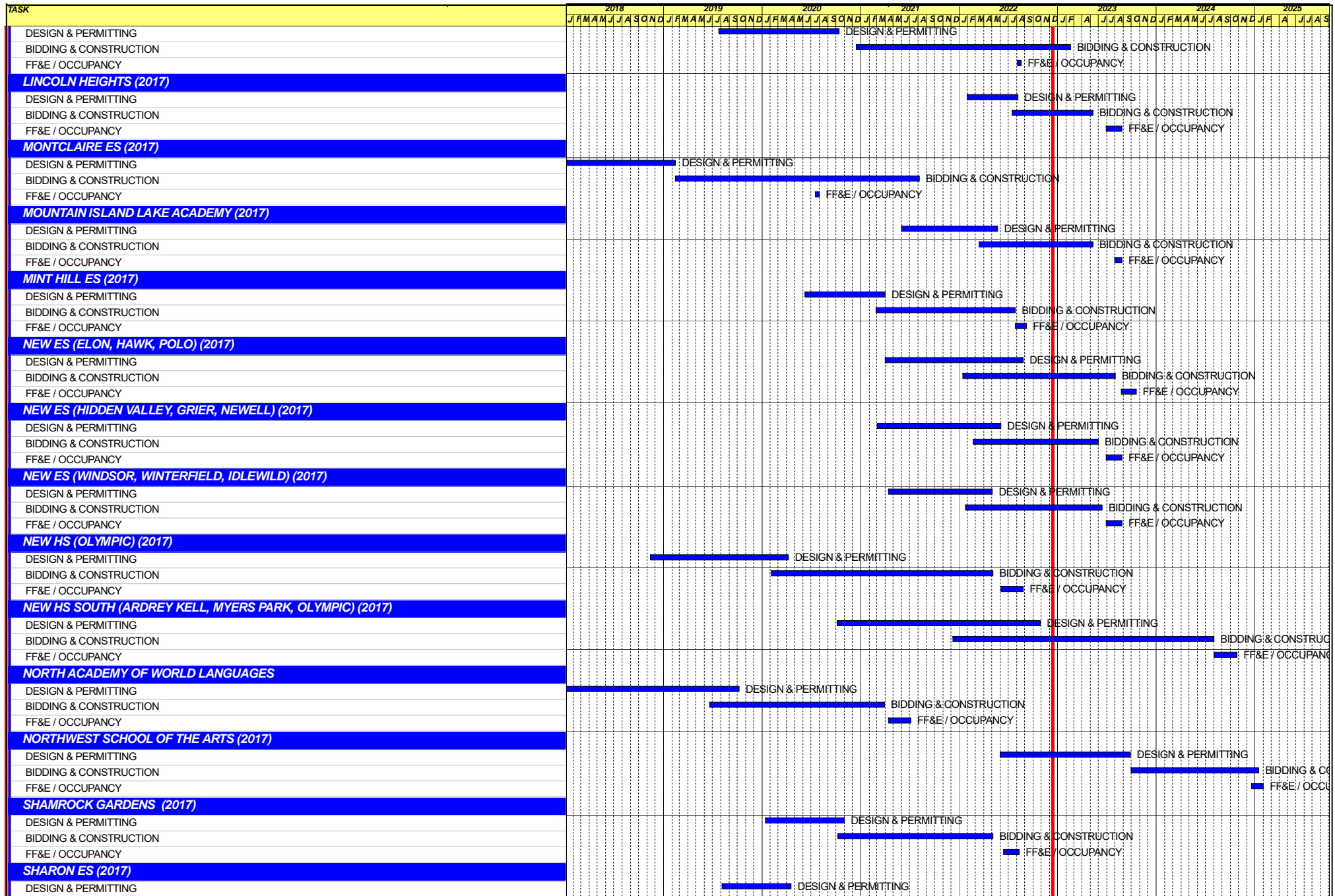
Creating a temporary space for students and staff to occupy during construction on a school’s campus has proven to be beneficial to the project’s schedule and cost and overall safety and efficiency of school operations. When the renovation or expansion of a facility is performed and the facility must remain functionally operational, there are benefits to the owner in using swing space.

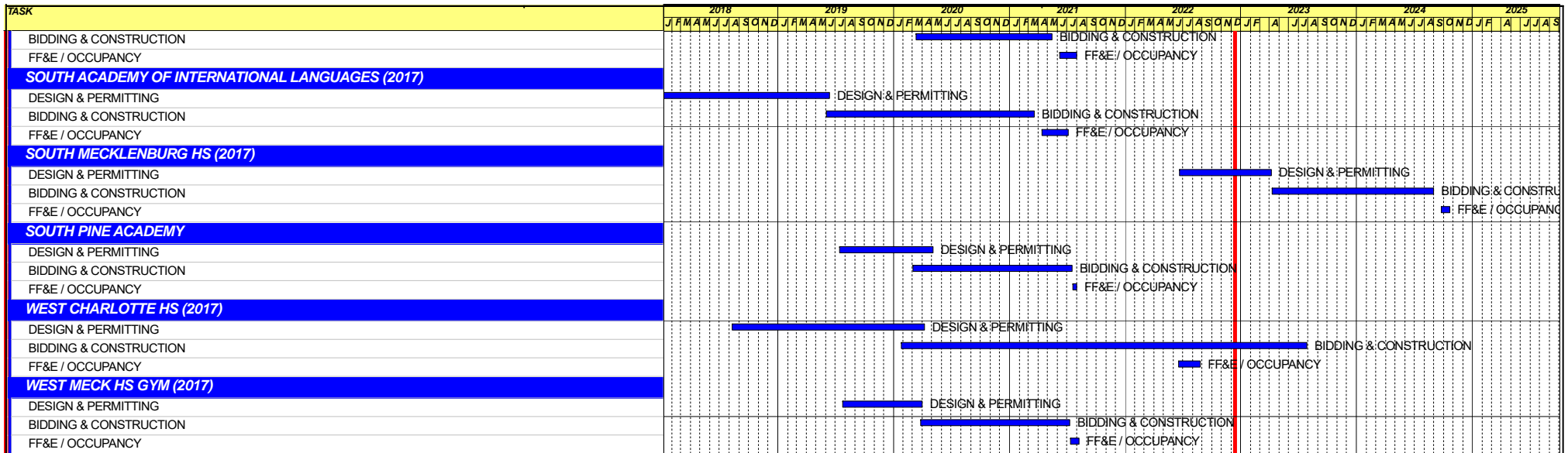
We have successfully utilized both onsite and offsite swings. The most desirable swings are “offsite” ones. Onsite swing using mobiles or modulars, likewise has been successfully used. The following is a summary of current swing options planned or in use.

<u>School</u>	<u>No. of Mobiles/Relocation Site</u>	<u>Status (From – To)</u>
---------------	---------------------------------------	---------------------------

None at this time		
-------------------	--	--







Capital Improvements Program
Projects in Design or Under Construction

School	Architect	General Contractor/CM
Projects In Design		
New Bruns Avenue ES (17)	ADW	Edifice, Inc.
Northwest School of the Arts Addition (17)	LS3P	Balfour Beatty
South Mecklenburg High School Addition (17)	Morris Berg	Balfour Beatty
Projects in Bid/Award/Construction Phase		
E.E. Waddell (17)	Moseley	Randolph & Sons
Garinger Addition/Renovation & CTE (17)	LS3P	Balfour Beatty
J.T. Williams (17)	FWA	New Atlantic
Lansdowne Elementary School Replacement (17)	Perkins Eastman	Edifice, Inc.
Lincoln Heights Repurpose (17)	Neighboring Concepts	Randolph & Sons
Mountain Island School (17)	ADW	Whiting-Turner
New ES (Elon,Hawk Ridge, Polo Ridge) (17)	Little Diversified	Balfour Beatty
New ES (Hidden Valley, JW Grier, Newell) (17)	ADW	Edifice, Inc.
New ES (Windsor, Winterfield, Idlewild) (17)	Neighboring Concepts	Rodgers-Holt Brothers
New HS (South, Ardrey) (17)	Ratio	Messer
West Charlotte High School (17)	LS3P	Rodgers-Holt Brothers

Capital Improvements Program
Projects Substantially Completed/Closed *

School	Turnover Year	Architect	General Contractor
Palisades High School (Olympic Relief) (17)	Aug-22	Little Diversified	Edifice, Inc.
Shamrock Gardens Elementary School Replacement (17)	Aug-22	Little Diversified	Rodgers/Holt Brothers
Mint Hill ES (17) <i>(fka Bain, Lebanon Rd, Piney Grove)</i>	Aug-22	FWA	Metcon
East Mecklenburg High School (17)	May-22	Morris Berg	Turner Construction
CTE (Harding, Olympic, South) (17)	Jan-22	MPS	Branch Brownstone
Briarwood Elementary School Replacement (17)	Aug-21	ADW	New Atlantic Contracting
Montclair Elementary School (17)	Aug-21	WHN	Messer Construction
North Academy of World Languages (17)	Aug-21	ADW	New Atlantic Contracting
Sharon Elementary School (17)	Aug-21	Clark Nexsen	Samet
South Academy of International Languages (17)	Aug-21	FWA	Messer Construction
South Pine Academy (17)	Aug-21	FWA	Metcon
West Mecklenburg Gym (17)	Aug-21	Moseley	Barnhill/D.A. Everett
Collinswood Language Academy (17)	Aug-20	Perkins Eastman	Turner Construction
Harding High School Renovation (17)	Aug-20	SFLA	Barnhill Contracting
Rea Farms STEAM Academy (13)	Aug-20	Little Diversified	Balfour Beatty
Ashley Park K-8 Conversion (13)	Aug-19	ADW	Turner Construction
Druid Hills K-8 Conversion (13)	Aug-19	ADW	Edifice, Inc.
Selwyn Elementary (13)	Aug-19	Clark Nexsen	Balfour Beatty
Charlotte Mecklenburg Academy (17)	Aug-19	KSQ	Edifice, Inc.
Davidson K-8 (13)	Aug-19	Little Diversified	Gilbane
CTE - North Mecklenburg High (13)	Aug-19	LS3P	Shiel Sexton
CTE - Garinger (13)	Mar-19	LS3P	Hostetter & Son
CTE - Independence (13)	Mar-19	LS3P	D.E. Brown
CTE - West Mecklenburg (13)	Mar-19	LS3P	Hostetter & Son
Charlotte East Language Academy (13)	Aug-18	Morris Berg	Edifice, Inc
Myers Park High School Phase 3 (13)	Aug-18	Boomerang Design	BE&K
Northridge Middle (13)	Aug-18	Morris Berg	Barnhill Contracting
Myers Park High Bldg 2 (13)	Feb-18	Boomerang Design	BE&K
East Mecklenburg High Addition (13)	Jan-18	Bergman (fna Gantt Huberman)	Edifice, Inc.
J.M. Alexander Middle (13)	Aug-17	FWA Group	Balfour Beatty
Northwest School of the Arts Renovation (13)	Aug-17	Moseley	Turner Construction
Renaissance West STEAM Academy (13)	Aug-17	Little Diversified	Rodgers Construction
South Mecklenburg High Addition (13)	Jul-17	SFLA	Barnhill Contracting
Myers Park High Bldg 1 (13)	Sep-16	Boomerang	KBR
Statesville Road Elementary (13)	Aug-16	ADW	JE Dunn
Nations Ford Elementary (13)	Aug-16	Wash Hatem Nelson	Messer Construction
Olympic High Addition (13)	Aug-16	McMillan, Pazdan, Smith	Turner Construction
Lawrence Orr Elementary (07)	Aug-15	Cort Architectural Group	DH Griffin/Metcon
Parkside Elementary (07)	Aug-15	Wash Hatem Nelson	Clancy & Theys
Hawthorne High Renovations (07)	Aug-15	Morris-Berg	Balfour Beatty
Newell Elementary (07)	Aug-15	Perkins Eastman	New Atlantic Contracting
Ranson Middle (07)	Aug-15	Morris-Berg	Edifice, Inc.
Vance High	Jan-15	LS3P	Matthews Construction Co., Inc.
Garinger High - Renovations/Addition	Aug-14	Adams Group Architects	Turner Construction
Olympic High - Stadium	Aug-14	Site Solutions	Turner Construction
West Mecklenburg High - Stadium	Aug-14	Site Solutions	Turner Construction
Collinswood - Indoor Air Quality	Aug-14	PEA	The Bowers Group
Lansdowne - Indoor Air Quality	Aug-14	AeroRaq	Tyler 2
McKee Road - Indoor Air Quality	Aug-14	McCracken & Lopez	Godfrey Construction
Garinger High - Track & Field	Jul-14	Site Solutions	Turner Construction
Independence High - Gym	Jun-14	Shook Kelly	Shelco, Inc. (CM)
Palisades Park Elementary	May-14	Wash Hatem Nelson	Clancy & Theys

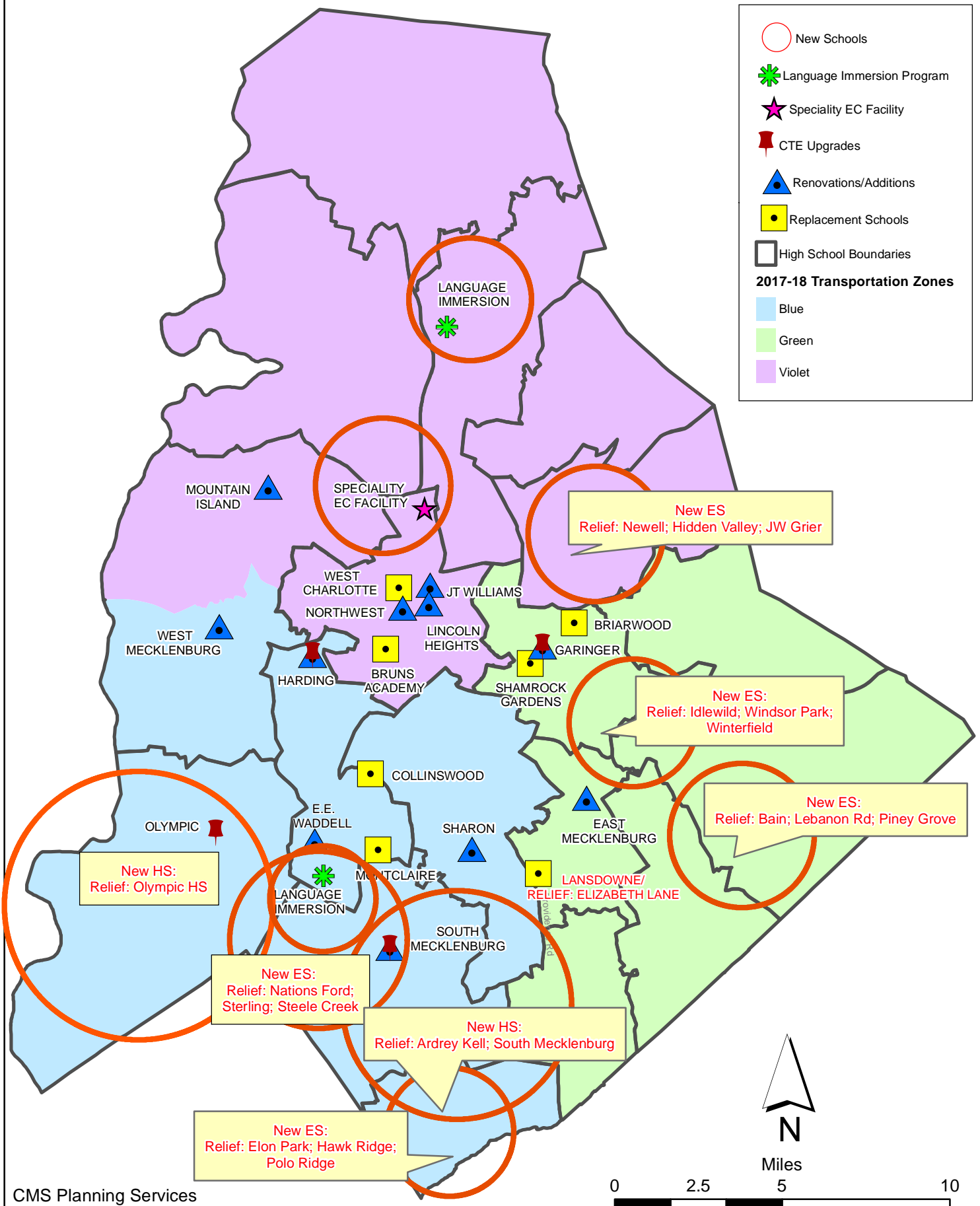
Capital Improvements Program

Projects Substantially Completed/Closed *

School	Turnover Year	Architect	General Contractor
East Mecklenburg High Auditorium	Jan-14	Gantt Huberman Associates	Godfrey Construction Co., Inc.

Projects closed prior to 2014 are not shown

CMS Capital Improvement Plan 2017 Bond Projects



PROJECT STATUS REPORT



Monthly Project Status 2017 Bond Summary

December 2022

Project	Current Project Estimate	Project Scope	** Occupy On	Design Phase	Construction Progress	Project Status
Briarwood Elementary School (17)	\$ 31,243,066	45-classroom replacement facility; replaces school built in 1956.	August 2021	Complete	100 %	Project is complete.
Bruns Academy (17)	\$ 40,590,679	New 45-classroom elementary school (K-5); replaces old school built in 1969.	August 2024	Construction Documents	0 %	The Bruns Avenue Elementary Replacement construction documents have been received. CDOT accepted the traffic memorandum scope and associated construction phasing plans. The CM issued the remaining bid packages (phase 2) and will receive bids in January. This new 45-classroom school will incorporate a full-size gym and associated areas in coordination with Charlotte-Mecklenburg Parks & Recreation. Construction is scheduled to start the first quarter of 2023 and occupancy is scheduled August 2024.
Career and Technology Education (17)	\$ 9,659,765	Phase I CTE upgrades at Olympic, Harding, Garinger and South Mecklenburg.	January 2022	Complete	100 %	Project is complete.
Charlotte-Mecklenburg Academy (17)	\$ 17,699,220	New EC school located on the old Statesville Elementary School site.	August 2019	Complete	100 %	Project is complete.
Collinswood Language Academy (17)	\$ 41,412,015	New 63-classroom K-8 facility on the site of the Smith Family Center.	August 2020	Complete	100 %	Project is complete.
E.E. Waddell (17)	\$ 5,137,367	Repurpose current E.E. Waddell to reopen as a magnet high school.	August 2023	Complete	99 %	The contractor for E.E. Waddell continues with the phased construction renovations. The light fixture LED retrofit kits have been delivered, and the construction team is taking advantage of teacher workdays and holidays to work through remaining classroom upfits. The fan motors for unit ventilators have also arrived allowing the team to incorporate per the plan.

Monthly Project Status

2017 Bond Summary

December 2022

Project	Current Project Estimate	Project Scope	** Occupy On	Design Phase	Construction Progress	Project Status
East Mecklenburg High School (17)	\$ 10,231,911	This project will provide for the design, and construction of a new 30 classroom building.	August 2022	Complete	99 %	The East Mecklenburg High School new classroom building was occupied in August. The project is now in the closeout phase.
Garinger High School (17)	\$ 5,236,979	Project includes the design and construction for renovations of 300 building and a new 16 classroom building.	January 2023	Complete	97 %	The construction manager for the Garinger Addition and Renovation project completed final cleaning of the 300 building classrooms with the corridors to follow in January. The fire and domestic water taps were completed late December. The fire pump is schedule to start the beginning of January for final sign off from the Fire Marshall.
Harding High School (17)	\$ 13,747,878	Renovation of the kitchen, cafeteria, existing gym (aux) and the addition of a new gym.	August 2020	Complete	100 %	Project is complete.
JT Williams (17)	\$ 17,032,600	Project includes building renovations to J.T. Williams Montessori magnet.	August 2024	Complete	54 %	The construction manager for JT Williams Secondary Montessori is completing the site work and hardscapes associated with the 100 Building renovations, including the loading dock area behind the kitchen. The interior finishes including floor tile and finish paint are nearing completion. Supply chain issues are affecting delivery of the mechanical roof top units; this in conjunction with the timing of the required fire-line water taps will likely impact the 100 Building occupancy in early spring. The work on the modular classroom building continues, once completed it will be utilized for swing space while renovations in the 200 Building take place.
Lansdowne Elementary School (17)	\$ 33,804,188	New 45-classroom school; replaces old school built in 1959 and relieve crowding at Elizabeth Lane ES.	August 2022	Complete	95 %	The Lansdowne Elementary School construction manager's trade contractors are completing the remaining punch list items in the new building after school hours. The old facility is now removed and final site grading for playfield installation is ongoing. New playgrounds are scheduled for installation in late February. The demolition and remaining site work will be completed in early 2023.
Lincoln Heights Elementary School (17)	\$ 4,588,675	Repurpose and reopen as magnet school.	August 2023	Complete	10 %	The Lincoln Heights repurpose project will begin construction activities in January to be ready for occupancy in August 23. The teams are currently coordinating work related to the Trillium Montessori into the plan.

Monthly Project Status

2017 Bond Summary

December 2022

Project	Current Project Estimate	Project Scope	** Occupy On	Design Phase	Construction Progress	Project Status
Mint Hill Elementary School (17)	\$ 29,671,526	New 45-classroom elementary school; relieves crowding at Bain, Lebanon Road, Piney Grove.	August 2022	Complete	99 %	The Mint Hill Elementary School project has moved into the closeout phase. The new signal at the entrance to the schools is currently scheduled to occur spring/summer 2023.
Montclair Elementary School (17)	\$ 28,200,634	New 45-classroom replacement facility replacing school built in 1958.	August 2020	Complete	100 %	Project is complete.
Mountain Island Lake Academy (17)	\$ 13,239,686	K-8 Phase 2 - New gymnasium and specialty classrooms.	August 2023	Complete	36 %	The Mountain Island Lake Academy Gym/Classroom Addition construction manager continued with load bearing masonry and prepared for steel in the classroom areas. The site work contractor continued with final grading and preparing the crane pad for steel erection the beginning of January.
New Elementary School (Elon, Hawk Ridge, Polo Relief) (17)	\$ 59,141,760	New 45-classroom elementary school to relieve Elon, Hawk Ridge, Polo.	August 2023	Complete	17 %	The New Elementary School (Elon, Hawk Ridge, Polo Relief) construction manager completed the building footings, underground electrical and plumbing rough-ins. The mason continued with load bearing masonry walls in areas B and A. The recreation center footings were installed and below grade masonry continued. The project team is working to identify options to mitigate schedule impacts from the later and anticipated receipt of permits, masonry delays and potential supply chain issues. The road procurement package has been revised and will rebid in early 2023.
New Elementary School (Hidden Valley, JW Grier, Newell) (17)	\$ 44,079,387	New 45-classroom elementary school; relieves overcrowding at Hidden Valley, J.W. Grier, Newell.	August 2023	Complete	50 %	The New Elementary School (Hidden Valley, JW Grier, Newell Relief) construction manager has set the stone for parking lot paving which will be scheduled as weather permits. Load bearing masonry and structural steel framing is now complete. The roof installation is progressing at cafeteria/kitchen area. Windows are being installed. The MEP trade contractors continue rough ins to support systems. Charlotte Water has scheduled the installation for the new water tap. The construction team continues to work through supply chain material delivery issues.

Monthly Project Status

2017 Bond Summary

December 2022

Project	Current Project Estimate	Project Scope	** Occupy On	Design Phase	Construction Progress	Project Status
New Elementary School (Windsor, Winterfield, Idlewild Relief) (17)	\$ 45,855,770	New 45-classroom elementary school to relieve Windsor, Winterfield, and Idlewild ES.	August 2023	Complete	38 %	The New Elementary School (Windsor Park, Winterfield, Idlewild Relief) construction manager continues work at the site retaining walls allowing grades to be brought to finish. The MEP trades are now working on above ceiling and in-wall rough ins throughout. The structural steel framing, load bearing masonry and roofing installation continues. The teams continue evaluating the construction schedule for options to mitigate the impacts from the Duke Power line relocation.
New High School (South, Ardrey) (17)	\$ 160,930,460	New 100 classroom high school to relieve South Mecklenburg, Ardrey Kell and Myers Park HS.	August 2024	Complete	15 %	The New High School (South, Ardrey Relief) construction manager continued with footing, below grade masonry installations in addition to load bearing masonry in the classroom wing. Area G and F underground plumbing and electrical is underway in preparation for the slab on grade. Sitework is ongoing including sanitary and storm installations throughout the site. The retaining wall contractor continued with the installation of the site retaining walls.
North Academy of World Languages (17)	\$ 41,739,951	New 66 classroom K-8 Language Immersion facility located on the old J.M. Alexander Middle School site.	August 2021	Complete	100 %	Project is complete.
Northwest School of the Arts (17)	\$ 20,467,000	Replace classroom building built in 1952 and build classroom addition that supports program.	January 2025	Schematic	0 %	The Northwest School of the Arts project continues to progress in the schematic phase. The design scope includes a classroom building that replaces the existing visual arts building, building D and site improvements. The project will be completed in multiple phases, the parking modifications are scheduled to begin in the fall of 2023.
Palisades High School (17)	\$ 107,592,534	New 100 classroom high school; relieves crowding at Olympic High School.	August 2022	Complete	99 %	The Palisades High School (fka New High School Olympic Relief) has been occupied by staff and students. The construction manager is in the closeout phase and is working with trade contractors to complete punch list and open issues.
Shamrock Gardens Elementary School (17)	\$ 30,784,692	New 45-classroom replacement facility.	August 2022	Complete	100 %	Project is complete.

Monthly Project Status

2017 Bond Summary

December 2022

Project	Current Project Estimate	Project Scope	** Occupy On	Design Phase	Construction Progress	Project Status
Sharon Elementary School (17)	\$ 9,125,862	Add 16 classroom building and increase capacity of cafeteria.	August 2021	Complete	100 %	Project is complete.
South Academy of International Languages (fka New K-8 School (South) (17)	\$ 40,669,909	New 71 classroom K-8 Language Immersion facility located on the old Nations Ford Elementary School site.	August 2021	Complete	100 %	Project is complete.
South Mecklenburg High School (17)	\$ 15,622,927	Renovate/replace two classroom buildings built in 1958 to upgrade learning conditions.	January 2025	Construction Documents	0 %	The South Mecklenburg High School Addition project 50% construction documents have been received and are under review. Mobiles will be relocated summer 2023 to allow construction on the new building to begin in the fall of 2023 and be available for occupancy January 2025.
South Pine Academy (17)	\$ 30,438,977	New 45-classroom elementary school to relieve Nations Ford, Sterling, and Steele Creek.	August 2021	Complete	100 %	Project is complete.
West Charlotte High School (17)	\$ 104,413,163	New 100 classroom school to replace current facility built in 1954.	August 2022	Complete	92 %	The West Charlotte High School construction manager continues to work on the phase two (demolition/sitework) phase of the project. All structures are on the ground allowing the site contractor to focus on bringing the site to final grade. Once grades are established, the parking lots and ball fields will follow. The team continues to coordinate the project with school administration. The demolition/and sitework phase is scheduled for completion in August 2023.
West Mecklenburg High School (17)	\$ 6,259,479	Provide new gymnasium, the existing gymnasium will become the auxilliary.	August 2021	Complete	100 %	Project is complete.

MONTHLY PROJECT PHOTOS

PROJECT PROGRESS PHOTOS



New ES Elon Park, Hawk Ridge, Polo Ridge

PROJECT PROGRESS PHOTOS



New ES Elon Park, Hawk Ridge, Polo Ridge

PROJECT PROGRESS PHOTOS



New ES Elon Park, Hawk Ridge, Polo Ridge

PROJECT PROGRESS PHOTOS



New HS Ardrey Kell, South Mecklenburg

PROJECT PROGRESS PHOTOS



New HS Ardrey Kell, South Mecklenburg

PROJECT PROGRESS PHOTOS



New HS Ardrey Kell, South Mecklenburg

PROJECT PROGRESS PHOTOS



New ES Windsor, Winterfield, Idlewild

PROJECT PROGRESS PHOTOS



New ES Windsor, Winterfield, Idlewild

PROJECT PROGRESS PHOTOS



New ES Windsor, Winterfield, Idlewild

PROJECT PROGRESS PHOTOS



New ES Hidden Valley, JW Grier, Newell

PROJECT PROGRESS PHOTOS



New ES Hidden Valley, JW Grier, Newell

PROJECT PROGRESS PHOTOS



New ES Hidden Valley, JW Grier, Newell

PROJECT PROGRESS PHOTOS



Mountain Island Lake Academy

PROJECT PROGRESS PHOTOS



Mountain Island Lake Academy

PROJECT PROGRESS PHOTOS



Mountain Island Lake Academy

PROJECT PROGRESS PHOTOS



E.E. Waddell

PROJECT PROGRESS PHOTOS



J.T. Williams

PROJECT PROGRESS PHOTOS



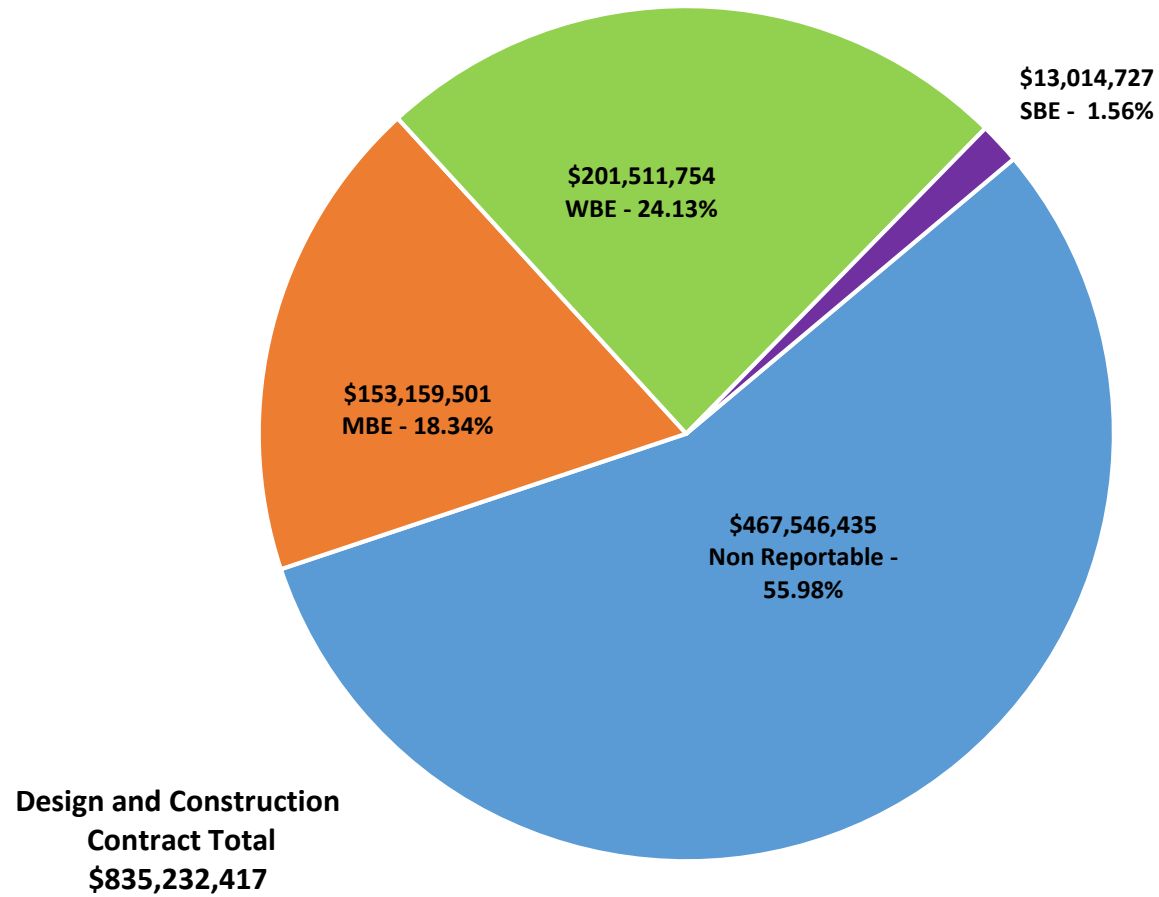
Garinger

MWSBE PARTICIPATION REPORT

Facility	Contract Amount	African American MBE\$	%	Other MBE \$	%	Total MBE \$	%	Other WBE \$	%	Other SBE \$	%	Total	%
<u>Briarwood Elementary School (17)</u>	\$28,424,691	\$4,075,384	14.34%	\$2,135,619	7.51%	\$6,211,003	21.85%	\$2,187,249	7.69%	\$187,102	0.66%	\$8,585,354	30.20%
<u>Career and Technology Education (17)</u>	\$5,596,312	\$522,870	9.34%	\$315,278	5.63%	\$838,148	14.98%	\$203,576	3.64%	\$65,475	1.17%	\$1,107,199	19.78%
<u>Charlotte-Mecklenburg Academy (17)</u>	\$17,035,852	\$198,536	1.17%	\$1,029,192	6.04%	\$1,227,728	7.21%	\$928,554	5.45%	\$13,200	0.08%	\$2,169,482	12.73%
<u>Collinswood Language Academy (17)</u>	\$38,527,704	\$649,287	1.69%	\$1,613,103	4.19%	\$2,262,390	5.87%	\$11,362,566	29.49%	\$9,328	0.02%	\$13,634,284	35.39%
<u>E.E. Waddell (17)</u>	\$2,065,933	\$0	0.00%	\$0	0.00%	\$0	0.00%	\$10,950	0.53%	\$0	0.00%	\$10,950	0.53%
<u>East Mecklenburg High School (17)</u>	\$12,676,283	\$603,811	4.76%	\$532,460	4.20%	\$1,136,271	8.96%	\$490,382	3.87%	\$681,075	5.37%	\$2,307,728	18.21%
<u>Garinger High School (17)</u>	\$4,335,847	\$407,299	9.39%	\$1,710,324	39.45%	\$2,117,623	48.84%	\$944,393	21.78%	\$270,990	6.25%	\$3,333,006	76.87%
<u>Harding High School (17)</u>	\$13,015,986	\$1,504,505	11.56%	\$310,356	2.38%	\$1,814,862	13.94%	\$4,010,831	30.81%	\$176	0.00%	\$5,825,869	44.76%
<u>JT Williams (17)</u>	\$15,277,823	\$2,000	0.01%	\$20,000	0.13%	\$22,000	0.14%	\$0	0.00%	\$51,800	0.34%	\$73,800	0.48%
<u>Lansdowne Elementary School (17)</u>	\$30,705,939	\$2,617,363	8.52%	\$788,126	2.57%	\$3,405,489	11.09%	\$2,051,155	6.68%	\$223,625	0.73%	\$5,680,270	18.50%
<u>Lincoln Heights Elementary School (17)</u>	\$2,164,383	\$92,274	4.26%	\$18,800	0.87%	\$111,074	5.13%	\$0	0.00%	\$74,503	3.44%	\$185,577	8.57%
<u>Mint Hill Elementary School (17)</u>	\$26,373,282	\$5,223,675	19.81%	\$18,319,957	69.46%	\$23,543,632	89.27%	\$1,201,089	4.55%	\$308,370	1.17%	\$25,053,091	94.99%
<u>Montclair Elementary School (17)</u>	\$26,093,784	\$3,617,952	13.87%	\$2,260,381	8.66%	\$5,878,333	22.53%	\$5,731,016	21.96%	\$517,257	1.98%	\$12,126,605	46.47%
<u>Mountain Island Lake Academy (17)</u>	\$12,499,991	\$129,862	1.04%	\$664,719	5.32%	\$794,581	6.36%	\$908,098	7.26%	\$30,300	0.24%	\$1,732,979	13.86%
<u>New Elementary School (Elon, Hawk)</u>	\$44,107,593	\$5,746,496	13.03%	\$991,715	2.25%	\$6,738,211	15.28%	\$8,295,398	18.81%	\$1,124,011	2.55%	\$16,157,620	36.63%
<u>New Elementary School (Hidden Vall)</u>	\$38,657,270	\$5,493,635	14.21%	\$4,211,754	10.90%	\$9,705,389	25.11%	\$2,237,544	5.79%	\$25,600	0.07%	\$11,968,533	30.96%
<u>New Elementary School (Windsor, W)</u>	\$41,219,974	\$8,807,507	21.37%	\$3,356,831	8.14%	\$12,164,338	29.51%	\$26,466,433	64.21%	\$7,440	0.02%	\$38,638,211	93.74%
<u>New High School (South, Ardrey) (17)</u>	\$132,698,981	\$1,867,976	1.41%	\$3,365,372	2.54%	\$5,233,348	3.94%	\$7,188,271	5.42%	\$3,913,152	2.95%	\$16,334,771	12.31%
<u>North Academy of World Languages (17)</u>	\$38,090,783	\$1,688,775	4.43%	\$1,575,863	4.14%	\$3,264,638	8.57%	\$3,471,693	9.11%	\$437,418	1.15%	\$7,173,748	18.83%
<u>Northwest School of the Arts (17)</u>	\$1,374,515	\$0	0.00%	\$37,000	2.69%	\$37,000	2.69%	\$27,850	2.03%	\$0	0.00%	\$64,850	4.72%
<u>Palisades High School (17)</u>	\$98,207,798	\$13,504,638	13.75%	\$7,587,760	7.73%	\$21,092,398	21.48%	\$13,786,630	14.04%	\$2,996,568	3.05%	\$37,875,596	38.57%
<u>Shamrock Gardens Elementary School (17)</u>	\$28,035,161	\$2,366,885	8.44%	\$1,472,922	5.25%	\$3,839,807	13.70%	\$23,207,193	82.78%	\$274,496	0.98%	\$27,321,497	97.45%
<u>Sharon Elementary School (17)</u>	\$8,525,796	\$326,844	3.83%	\$283,497	3.33%	\$610,341	7.16%	\$926,873	10.87%	\$217,984	2.56%	\$1,755,197	20.59%
<u>South Academy of International Languages (17)</u>	\$37,073,825	\$6,023,141	16.25%	\$2,431,071	6.56%	\$8,454,212	22.80%	\$10,911,546	29.43%	\$347,799	0.94%	\$19,713,557	53.17%

Facility	Contract Amount	African American MBE\$	%	Other MBE \$	%	Total MBE \$	%	Other WBE \$	%	Other SBE \$	%	Total	%
<u>South Mecklenburg High School (17)</u>	\$1,200,154	\$0	0.00%	\$0	0.00%	\$0	0.00%	\$0	0.00%	\$0	0.00%	\$0	0.00%
<u>South Pine Academy (17)</u>	\$26,161,268	\$916,165	3.50%	\$19,205,893	73.41%	\$20,122,058	76.92%	\$4,342,256	16.60%	\$237,754	0.91%	\$24,702,068	94.42%
<u>West Charlotte High School (17)</u>	\$95,276,099	\$7,823,736	8.21%	\$3,917,680	4.11%	\$11,741,415	12.32%	\$68,556,456	71.96%	\$715,530	0.75%	\$81,013,401	85.03%
<u>West Mecklenburg High School (17)</u>	\$9,809,391	\$283,809	2.89%	\$509,403	5.19%	\$793,212	8.09%	\$2,063,752	21.04%	\$283,775	2.89%	\$3,140,739	32.02%
Grandtotal	\$835,232,417	\$74,494,426	8.92%	\$78,665,075	9.42%	\$153,159,501	18.34%	\$201,511,754	24.13%	\$13,014,727	1.56%	\$367,685,982	44.02%

MWSBE Participation 2017 Bond Projects



PROJECT CONTROLS

CHARLOTTE-MECKLENBURG BOARD OF EDUCATION
2013 BOND SERIES-CAPITAL IMPROVEMENT PROGRAM
BUDGET STATUS REPORT

	Original Project Budget	Current Project Budget	Committed Amount	Approved Change Orders	Total Committed	Pending Commitments	To Be Committed	Prev Paid To Date	Paid To Date	Balance To Complete	Monthly Expenditure
	(A)	(B)	(C)	(D)	(E)=C+D	(F)	(G)=(B-E-F)	(H)	(I)	(J)=(B-I)	(K)=(I-H)
<u>A. REPLACEMENT & RENOVATIONS</u>											
1 Career & Technology Education Institutes Phase 1:	\$8,640,000	\$18,697,857	\$6,811,184	\$11,886,477	\$18,697,661	\$0	\$196	\$17,481,390	\$17,707,722	\$990,135	\$226,332
2 Davidson K-8 Conversion	\$9,500,000	\$13,461,149	\$2,131,151	\$11,329,998	\$13,461,149	\$0	\$0	\$13,461,149	\$13,461,149	\$0	\$0
3 J.M. Alexander Middle Replacement	\$30,672,000	\$29,845,539	\$4,502,518	\$25,343,021	\$29,845,539	\$0	\$0	\$29,845,539	\$29,845,539	\$0	\$0
4 Nations Ford Elementary Replacement	\$19,440,000	\$19,231,604	\$3,958,871	\$15,272,733	\$19,231,604	\$0	\$0	\$19,231,604	\$19,231,604	\$0	\$0
5 Northwest School of the Arts	\$12,420,000	\$12,868,718	\$2,047,917	\$10,820,801	\$12,868,718	\$0	\$0	\$12,868,719	\$12,868,719	\$0	\$0
6 Oakhurst STEAM Magnet Elementary/Starmount	\$5,940,000	\$5,407,812	\$3,471,397	\$1,936,415	\$5,407,812	\$0	\$0	\$5,407,812	\$5,407,812	\$0	\$0
7 Pre-K-8 Conversions Phase II: Ashley Park/ Bruns	\$24,732,000	\$19,700,807	\$4,167,671	\$15,533,138	\$19,700,809	\$0	\$0	\$19,700,807	\$19,700,807	\$0	\$0
8 Selwyn Elementary	\$2,592,000	\$4,624,831	\$744,799	\$3,880,032	\$4,624,831	\$0	\$0	\$4,624,831	\$4,624,831	\$0	\$0
9 Statesville Road Elementary	\$20,340,000	\$20,648,509	\$5,081,473	\$15,567,037	\$20,648,509	\$0	\$0	\$20,648,509	\$20,648,509	\$0	\$0
10 West Mecklenburg HS	\$0	\$3,993,543	\$3,993,543	\$0	\$3,993,543	\$0	\$0	\$3,993,543	\$3,993,543	\$0	\$0
Total Replacement & Renovations	\$134,276,000	\$148,480,367	\$36,910,523	\$111,569,652	\$148,480,175	\$0	\$197	\$147,263,902	\$147,490,234	\$990,133	\$226,332
<u>B. RESPONSE TO ENROLLMENT GROWTH</u>											
1 East Mecklenburg High Addition	\$12,744,000	\$12,083,804	\$4,465,200	\$7,618,603	\$12,083,803	\$0	\$0	\$12,083,803	\$12,083,803	\$0	\$0
2 Myers Park High Addition	\$22,248,000	\$11,040,942	\$1,207,493	\$9,833,448	\$11,040,942	\$0	\$0	\$11,040,941	\$11,040,941	\$0	\$0
3 Northridge Middle Addition	\$6,448,000	\$6,366,170	\$2,114,306	\$4,251,865	\$6,366,171	\$0	\$0	\$6,366,171	\$6,366,171	\$0	\$0
4 Olympic High Addition/Renovation	\$8,964,000	\$8,947,310	\$2,002,694	\$6,944,615	\$8,947,310	\$0	\$0	\$8,947,310	\$8,947,310	\$0	\$0
5 South Mecklenburg High Addition	\$18,360,000	\$16,307,355	\$2,922,282	\$13,385,073	\$16,307,355	\$0	\$0	\$16,307,355	\$16,307,355	\$0	\$0
6 Charlotte East Language Academy (FKA -New Lang	\$30,376,000	\$31,387,929	\$5,740,182	\$25,647,747	\$31,387,929	\$0	\$0	\$31,387,929	\$31,387,929	\$0	\$0
7 Rea Farms STEAM Academy	\$31,376,000	\$40,476,000	\$9,074,364	\$29,821,441	\$38,895,805	\$0	\$1,580,195	\$38,898,906	\$38,898,906	\$1,577,094	\$0
8 Renaissance West STEAM Academy (FKA New Pre-	\$30,376,000	\$31,698,952	\$5,667,388	\$26,031,564	\$31,698,952	\$0	\$0	\$31,698,952	\$31,698,952	\$0	\$0
9 New High School - South Meck/Ardrey Kell Relief *	\$0	\$9,278,699	\$9,278,699	\$0	\$9,278,699	\$0	\$0	\$9,278,699	\$9,278,699	\$0	\$0
Total Response to Enrollment Growth	\$160,892,000	\$167,587,161	\$42,472,609	\$123,534,357	\$166,006,966	\$0	\$1,580,195	\$166,010,066	\$166,010,066	\$1,577,095	\$0
<u>C. CONTINGENCY</u>											
	\$0	\$0	\$0	\$0	\$0	\$0	\$0	\$0	\$0	\$0	\$0
Total Contingency	\$0	\$0	\$0	\$0	\$0	\$0	\$0	\$0	\$0	\$0	\$0
TOTAL LOCAL BOND PROGRAM	\$295,168,000	\$316,067,527	\$79,383,132	\$235,104,009	\$314,487,141	\$0	\$1,580,392	\$313,273,968	\$313,500,300	\$2,567,227	\$226,332

Original project estimated costs approved by the Board Of Education on July 23, 2013 and approved by the voters of Mecklenburg County on November 5, 2013.

Note: Mecklenburg County's appropriated interest from COPS to increase funding for the 2013 Bond Program.

CHARLOTTE-MECKLENBURG BOARD OF EDUCATION
2017 BOND SERIES-CAPITAL IMPROVEMENT PROGRAM
BUDGET STATUS REPORT

	Original Project Budget	Current Project Budget	Committed Amount	Approved Change Orders	Total Committed	Pending Commitments	To Be Committed	Prev Paid To Date	Paid To Date	Balance To Complete	Monthly Expenditure
	(A)	(B)	(C)	(D)	(E)=C+D	(F)	(G)=(B-E-F)	(H)	(I)	(J)=(B-I)	(K)=(I-H)
<u>A. REPLACEMENT & RENOVATIONS</u>											
1 Briarwood Elementary *	\$29,091,619	\$31,243,066	\$4,730,586	\$26,421,879	\$31,152,464	\$0	\$90,602	\$31,151,615	\$31,101,615	\$141,451	(\$50,000)
2 Bruns Academy Replacement	\$34,207,808	\$40,590,679	\$3,633,182	\$24,430,156	\$28,063,338	\$0	\$12,527,341	\$1,414,598	\$1,415,531	\$39,175,149	\$933
3 Career & Technology Education Upgrades	\$10,101,734	\$9,659,765	\$2,290,761	\$3,768,875	\$6,059,636	(\$176)	\$3,600,305	\$5,629,594	\$5,654,167	\$4,005,598	\$24,573
4 Collinswood K-8 *	\$44,172,540	\$41,412,015	\$4,927,263	\$36,484,752	\$41,412,015	\$0	\$0	\$41,401,384	\$41,401,384	\$10,631	\$0
5 East Mecklenburg HS	\$12,771,594	\$10,231,911	(\$1,651,251)	\$11,857,916	\$10,206,665	(\$31,000)	\$56,246	\$10,078,950	\$10,084,792	\$147,119	\$5,843
6 Garinger HS	\$13,936,979	\$5,236,979	\$1,591,244	\$3,560,359	\$5,151,603	\$11,800	\$73,576	\$3,712,313	\$3,872,396	\$1,364,583	\$160,083
7 Harding University High *	\$18,330,263	\$13,747,878	\$2,045,267	\$11,702,610	\$13,747,877	\$0	\$0	\$13,747,877	\$13,747,877	\$0	\$0
8 Charlotte-Mecklenburg Academy (FKA -EC Specialty	\$18,957,960	\$17,699,220	\$2,175,504	\$15,523,717	\$17,699,220	\$0	\$0	\$17,699,220	\$17,699,220	\$0	\$0
9 Lansdowne Elementary	\$29,391,270	\$33,804,188	\$3,983,909	\$29,395,540	\$33,379,449	\$33,075	\$391,665	\$30,081,039	\$30,536,872	\$3,267,316	\$455,833
10 Lincoln Heights Elementary	\$3,740,478	\$4,588,675	\$2,595,043	\$62,829	\$2,657,872	\$0	\$1,930,804	\$409,829	\$424,357	\$4,164,318	\$14,528
11 Montclair Elementary Replacement *	\$28,559,390	\$28,200,634	\$2,426,761	\$25,773,873	\$28,200,634	\$0	\$0	\$28,200,634	\$28,200,634	\$0	\$0
12 Mountain Island k-8	\$9,218,439	\$13,239,686	\$1,745,969	\$11,344,864	\$13,090,833	\$10,000	\$138,854	\$4,484,071	\$5,803,697	\$7,435,989	\$1,319,627
13 Northwest School of the Arts	\$17,632,202	\$20,467,000	\$2,107,949	\$117,644	\$2,225,593	\$0	\$18,241,407	\$319,763	\$422,763	\$20,044,237	\$103,000
14 Shamrock Gardens Elementary *	\$29,890,351	\$30,784,692	\$3,465,339	\$27,080,324	\$30,545,663	(\$759,395)	\$998,423	\$28,756,831	\$28,770,930	\$2,013,762	\$14,099
15 Sharon Elementary	\$7,706,528	\$9,125,862	\$1,430,125	\$7,666,984	\$9,097,109	\$6,400	\$22,353	\$9,067,791	\$9,067,791	\$58,071	\$0
16 South Mecklenburg HS	\$13,352,143	\$15,622,927	\$1,763,332	\$94,238	\$1,857,570	\$0	\$13,765,357	\$448,700	\$517,521	\$15,105,406	\$68,821
17 E.E. Waddell Magnet HS	\$4,571,709	\$5,137,367	\$2,839,142	\$98,796	\$2,937,938	\$12,000	\$2,187,429	\$1,460,723	\$1,888,533	\$3,248,834	\$427,810
18 West Charlotte HS Replacement	\$109,977,166	\$104,413,163	\$12,074,669	\$91,540,401	\$103,615,070	\$56,500	\$741,592	\$90,867,838	\$91,619,176	\$12,793,987	\$751,338
19 West Mecklenburg HS	\$11,065,440	\$6,259,479	(\$2,371,639)	\$8,631,118	\$6,259,479	\$0	\$0	\$6,260,654	\$6,260,654	\$0	\$0
20 John Taylor Williams	\$13,964,339	\$17,032,600	\$3,581,796	\$12,300,008	\$15,881,803	\$69,000	\$1,081,797	\$5,666,821	\$6,527,331	\$10,505,269	\$860,510
Total Replacement & Renovations	\$460,639,952	\$458,497,787	\$55,384,950	\$347,856,883	\$403,241,833	(\$591,796)	\$55,847,750	\$330,860,244	\$335,017,244	\$123,480,543	\$4,156,999
<u>B. RESPONSE TO ENROLLMENT GROWTH</u>											
1 South Academy of International Languages	\$45,359,367	\$40,669,909	\$5,953,333	\$34,716,576	\$40,669,909	\$0	\$0	\$40,580,696	\$40,580,696	\$89,213	\$0
2 North Academy of World Languages (FKA - New K-8	\$45,359,367	\$41,739,951	\$6,022,055	\$35,717,896	\$41,739,951	\$0	\$0	\$41,728,256	\$41,728,256	\$11,695	\$0
3 South Pine Academy (FKA - New ES Nations Ford, S	\$29,173,829	\$30,438,977	\$6,793,874	\$23,645,103	\$30,438,977	\$0	\$0	\$30,466,234	\$30,466,234	\$0	\$0
4 Mint Hill Elementary School	\$29,988,332	\$29,671,526	\$3,344,153	\$26,377,557	\$29,721,710	(\$313,568)	\$263,384	\$27,173,505	\$27,872,514	\$1,799,012	\$699,009
5 New Elementary School - Windsor Park Relief *	\$30,422,230	\$45,855,770	\$13,407,777	\$31,659,394	\$45,067,171	\$5,000	\$783,599	\$13,381,696	\$13,416,513	\$32,439,258	\$34,817
6 New Elementary School - Elon/Hawk Ridge Relief *	\$30,426,712	\$59,141,761	\$16,600,747	\$42,098,607	\$58,699,353	\$0	\$442,407	\$21,204,622	\$23,265,642	\$35,876,118	\$2,061,020
7 New Elementary School - Hidden Valley Relief	\$30,518,345	\$44,079,387	\$6,821,865	\$36,564,145	\$43,386,010	\$0	\$693,377	\$16,280,744	\$18,810,590	\$25,268,797	\$2,529,846
8 Palisades High School	\$109,908,793	\$107,592,534	\$11,099,825	\$96,401,797	\$107,501,622	\$19,742	\$71,169	\$102,881,599	\$103,188,516	\$4,404,018	\$306,917
9 New High School - South Meck/Ardrey Kell Relief *	\$110,287,621	\$160,930,460	\$11,926,657	\$125,664,701	\$137,591,358	\$2,173	\$23,336,929	\$24,589,462	\$27,020,383	\$133,910,077	\$2,430,922
Total Response to Enrollment Growth	\$461,444,596	\$560,120,275	\$81,970,286	\$452,845,775	\$534,816,061	(\$286,653)	\$25,590,867	\$318,286,814	\$326,349,344	\$233,770,931	\$8,062,530
<u>C. CONTINGENCY</u>											
	\$0	\$0	\$0	\$0	\$0	\$0	\$0	\$0	\$0	\$0	\$0
Total Contingency	\$0	\$0	\$0	\$0	\$0	\$0	\$0	\$0	\$0	\$0	\$0

CHARLOTTE-MECKLENBURG BOARD OF EDUCATION
2017 BOND SERIES-CAPITAL IMPROVEMENT PROGRAM
BUDGET STATUS REPORT

	Original Project Budget	Current Project Budget	Committed Amount	Approved Change Orders	Total Committed	Pending Commitments	To Be Committed	Prev Paid To Date	Paid To Date	Balance To Complete	Monthly Expenditure
	(A)	(B)	(C)	(D)	(E)=C+D	(F)	(G)=(B-E-F)	(H)	(I)	(J)=(B-I)	(K)=(I-H)
TOTAL LOCAL BOND PROGRAM	\$922,084,548	\$1,018,618,062	\$137,355,236	\$800,702,658	\$938,057,894	(\$878,448)	\$81,438,616	\$649,147,059	\$661,366,588	\$357,251,474	\$12,219,529

Original project estimated costs approved by the Board Of Education on July 25, 2017 approved by the voters of Mecklenburg County on November 7, 2017.

*Project included in \$33.2M early funding approved by Board Of Education on August 9, 2016 and Mecklenburg Board of County Commissioners on September 6, 2016. On February 19, 2019 an additional \$8M was approved for New Elementary School - Elon/Hawk Ridge Relief site.

*Current Budget includes an additional \$89.2M to fund increase land and construction costs. The additional funds were approved by the Board of County Commissioners on June 16, 2020.

The New Elementary School - Elon/Hawk Ridge Relief current Budget includes 6.8M for Park and Recreation Project.

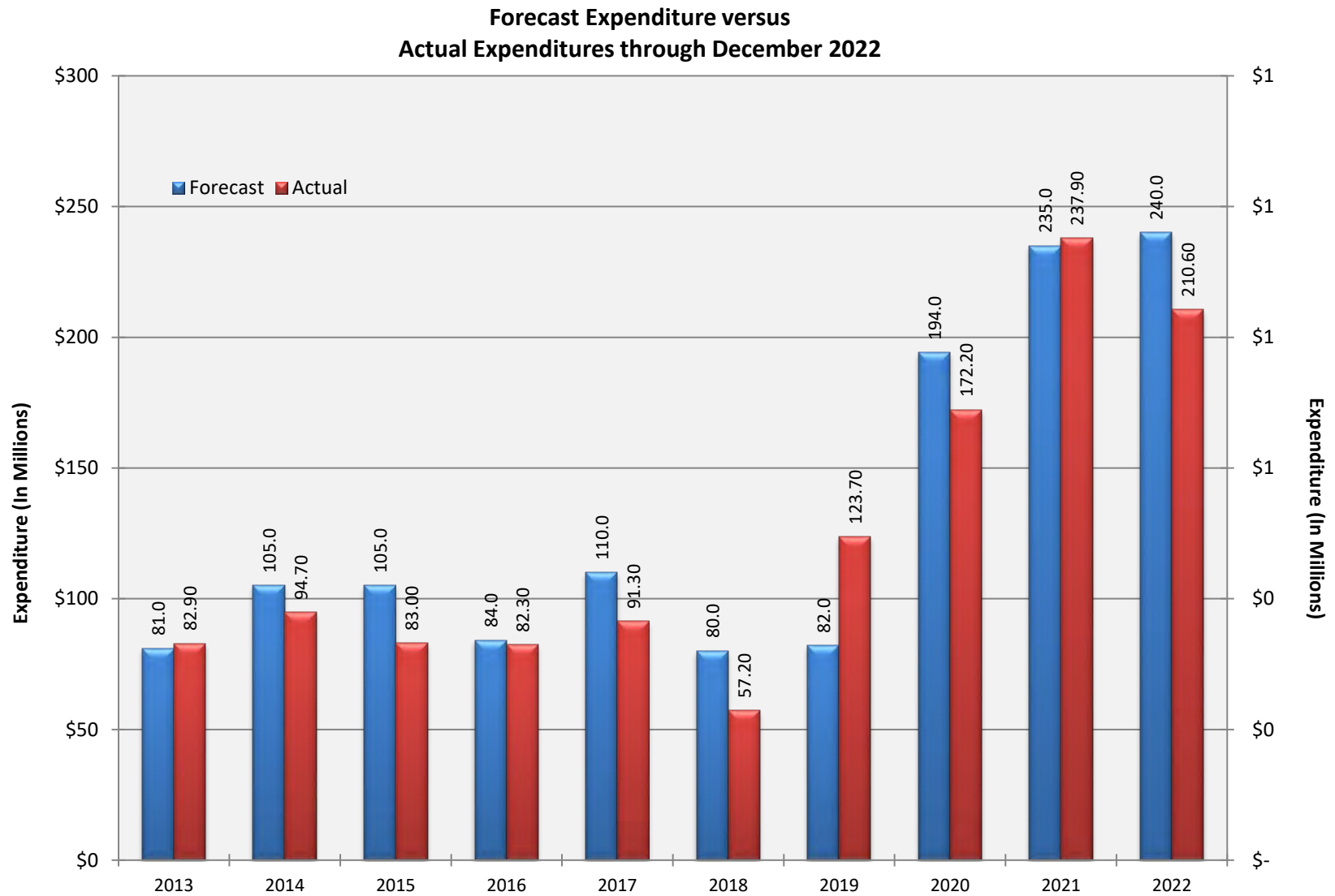
Current Budget reflects a reclass of \$7.4M in expenditures to 2007 Bond Program.

Charlotte-Mecklenburg Board of Education
Approved Construction or Repair Change Orders*
Reporting Period: December 2022

Funding Source	Project Name	Contractor	Description	Change Order Amount	Revised Contract Value
2017 Bond	Briarwood Elementary School (17)	New Atlantic Contracting, Inc.	Added Urban Forestry scope, CM Unused allowances, contingencies, and holds & fee credits, Expansion joint covers.	(\$216,681.34)	\$26,374,967.66
2017 Bond	West Charlotte High School (17)	RODGERS-HOLT BROTHERS, a Joint Venture	Locking Fire Line Covers, Kitchen Equipment Changes, Data Under Counter, Provide Projector, Lion's Den Light, SS Top, Dedication Plaque Mod, Salvage Changes, Locker Changes, Cameras at Stair, Data for Temp Office, Add Reveals at Omni, Credit for PLAM, Paint above Duct, Add Data for Lobby Guard, Add Steps & Handrail at Roof, Corner Guards, Security Camera Additions & Mods, Damper at Field House, Flow Meter at Nat, Add Graphics and Paint for History Wall, Doors & Hardware Bitings, Reconcile CM Allowance, Door Hardware, UL Cert of Existing Equip, Phone in Temp Office, Add JROTC Shelving, FRP Panel in Cosmetology, Pressbox Signage, Family Restroom Mods at Pool, Paint Classroom Alcoves, Cabinet, & Shelving Relocation, Steel Subcontract Allowance Reconcile, Girls and Boys Locker Changes.	\$83,099.00	\$88,694,627.00

* Not previously presented to the Board of Education for Approval

10 YEAR EXPENDITURE SUMMARY



GLOSSARY

Glossary

- **Project Management** – This section includes updates from our project managers and describes the currently active construction projects. This includes from Board of Education award thru final completion.
- **Design and Bidding** – This section contains updates from our design managers on the projects currently in the design phase. This phase from design award to Board of Education award of construction.
- **Controls** – Section includes misc. updates from controls group including expenditures, related Board of Education awards during the reporting period, cash flow information. This section covers all projects from approved bond through final expenditures and bond close with the county.
- **MWSBE** – Contains updates from the MWSBE Director and team, including current activity and summaries of the participation by MWSBE providers on our program.
- **Bond Progress Summary** – Provides a summary of bond financials including bond value, committed/pending amounts, paid to date, expended this month.
- **Project Procurement Dates** - Next 90 Days major project bid activity.
- **Mobile Swing Space Utilization** – Includes a summary of program related swing space currently in use and the schedule of use.
- **Bond Summary Schedule** – Current program summary schedule including planned design, construction and FF&E. These activities are fed from detailed schedules and are fine-tuned as project information is available.
- **Project Contractor Teams**; Provides summary of turnover dates for completed/closed projects since 2010 including architects/designers and contractors.
- **School Site Location Maps** – General location of bond projects (2017) by type.
- **Project Status Report** – This section of the report provides a summary of the bond project scope, current estimate (all sources), planned occupancy/actual occupancy date. It also provides a current status of the design phase, construction progress and a brief update. The report currently includes 2013 and 2017 bond projects that have or will be completed after to August 2016.
- **MWSBE Participation Report** – The MWSBE report provides a summary of the participation on the 2013 & 2017 Bond funded projects.
- **Project Progress Photos** – Includes photos of active construction projects.
- **Budget Summary Reports** – These reports are by funding source and summarize financial activity to date on the projects. This includes original and current project estimates, committed values, amounts paid to date, balances and monthly expenditures.
- **Change Orders < \$90,000** – This month's approved construction or repair change orders < \$90,000.
- **Expenditure Summary** – Provides a summary of Bond Expenditures by calendar year.