

# Capital Improvement Program

Monthly Bond Report  
December 2021



New Elementary School Bain, Lebanon, Piney Grove Relief



## **CAPITAL PROGRAM SERVICES** Capital Improvement Program

### **DECEMBER 2021** MONTHLY BOND REPORT

#### **PROGRAM OVERVIEW**

- Project Management
- Design and Bidding
- Controls
- MWSBE
- Bond Progress Summary
- Project Procurement - Next 90 Days
- Swing Space Utilization
- Bond Summary Schedule
- Project Contractor Teams; Projects in Design/Construction and Substantially Completed/Closed
- School Site Location Maps
  - Elementary Schools
  - Middle Schools
  - High Schools & Specialty Schools

#### **PROJECT STATUS REPORT**

#### **MWSBE PARTICIPATION REPORT**

#### **PROJECT PROGRESS PHOTOS**

#### **PROJECT CONTROLS**

- Budget Summary Reports
  - 2013 Bond Series
  - 2017 Bond Series
- Change Orders < \$90,000
- Expenditure Summary

#### **GLOSSARY**

# PROGRAM OVERVIEW

## PROJECT MANAGEMENT

The following is a summary of the activity on the bond funded projects in construction during the month of December.

The construction manager for **Briarwood Elementary Replacement School** progressed well with the installation of the curb and gutter for the staff/visitor lot, bus lot and main entrance road. Stone base was installed on the entrance road and staff/visitor lot. The installation of the sidewalks began and will continue into the following month. The concrete perimeter was installed for the two playgrounds. The remaining site work is scheduled to be completed in 2022.

The **CTE projects at Harding and South Mecklenburg** continued construction renovations. The projects have progressed as finish paint and floors are complete. The mechanical, electrical and plumbing trades are wrapping up and finalizing their scopes of work. Mecklenburg County Building Standards will be conducting final inspections shortly. The project team is working through kitchen equipment shipping issues and may have to substitute or provide temporary equipment to open for students and staff. The CTE department is working through delays to the FF&E that is planned for use in the new Harding suite. The Harding project consists of renovations to existing classrooms in the auditorium building to develop a suite of technology classrooms. The project at South Mecklenburg consists of renovating the old kitchen area into a culinary arts lab and classroom. Construction of both projects are scheduled for completion in January 2022.

The construction manager for **East Mecklenburg High School** completed the four-ply built up roof which will allow trade work to continue. Above ceiling mechanical, electrical and plumbing (MEP) trades will continue. The spray foam insulation is complete and brick veneer is progressing. The interior masonry around the bathrooms is also progressing. The new classroom wing is scheduled for occupancy in August 2022.

The **Garinger Addition and Renovation** construction manager continued making good progress to maintain the project schedule. The roof, exterior sheathing, air barrier and spray foam were installed. The mason began the installation of the architectural masonry on the exterior of the building. The interior stud framing continued throughout the 1<sup>st</sup> and 2<sup>nd</sup> floors. The MEP trades continued with in wall and above ceiling rough-ins. The addition is scheduled to be occupied August 2022 and the renovations to start summer of 2022 and be occupied January 2023.

The **Lansdowne Elementary School** construction manager continues installing the brick veneer. The roof has been installed in most areas and will complete shortly. The MEP trades continue with rough-ins throughout the facility and above ceiling. The drywall is well underway in the two-story classroom wing and metal stud walls are being framed and finalized in the administration area. Occupancy of the replacement school is scheduled for August 2022. Upon completion of the new building, demolition and remaining site work will commence and be completed in 2023.

The **New Elementary School (Bain, Lebanon, Piney Grove Relief)** construction manager continued installing brick veneer on multiple elevations. The roof installation has progressed at many areas allowing the drywall to begin in the two-story classroom wing. The MEP trades continue rough-ins throughout the facility. The site contractor has installed additional storm drains lines and continues to maintain erosion control. The team has also received a preliminary design to review for the required signal at the school entrance. This new 45-classroom school will be located next to the existing Mint Hill Middle School. The project is scheduled for occupancy in August 2022.

The construction manager for the **New High School Olympic Relief** coordinated many trades throughout the facility to maintain the project schedule. Drywall, ceiling, paint and MEP installations activities continued throughout the building. The VCT contractor mobilized and started installations in the three-story classroom wing. Kitchen equipment was delivered to the site to begin installation. The pool contractor continued with the installation of the

equipment and the finishes. Sidewalks and planting installation continued along with other miscellaneous exterior components. The 100-classroom relief high school is scheduled to be occupied in August 2022.

The **Shamrock Gardens Elementary School** construction manager continued to focus on the installation of the brick veneer and exterior components of the building. In addition the installation of interior metal studs, drywall, above ceiling MEP and ceiling grid continued throughout the building. The new 45-classroom replacement elementary school is scheduled to be occupied August 2022.

The trade contractors continue to work throughout the **West Charlotte High School** facility. The interior finishes have progressed in many areas including setting equipment and finish painting. The wood gym floor has been installed, finishing will follow. The site contractor is pouring hardscapes around the facility including areas at the stadium. The gym equipment including basketball goals are installed and the pool deck has been poured. Casework and cabinets are being installed and the plumber is setting fixtures in the bathrooms. The lights are being installed in the classroom wing and the mechanical contractor has the heat running throughout the facility. The project is scheduled to be occupied August 2022. Once the new school is occupied the existing school will be demolished and final site work will take place with final project completion in August 2023.

## DESIGN AND BIDDING

The following is a summary of the activity on the bond funded projects in design and bidding phase during the month of December.

The **E.E. Waddell High School** project has been submitted to LUESA and continues to progress in the building permit approval process. Coordination between CMS Architecture department, CMS facilities and school Principals continue with collaboration in their final planning efforts. The project consists of light renovations to the existing science classrooms, maker space, lobby, HVAC work, limited VCT and acoustical ceilings. This project is scheduled to start construction in spring 2022 and be occupied August 2023.

The **JT Williams Secondary Montessori** project is in the design development phase. The submittal is being reviewed by CMS and the construction manager and is expected to complete this month. The project's base scope focuses on required civil improvements, architectural and MEP renovations in the 100 and 200 buildings. The renovations to the remaining campus buildings mechanical and classroom lighting systems are being designed and will be bid as alternates. A 10-classroom modular will be used for swing and future space at the school site. Continuing development of the phasing plan and schedule are under way. The project is scheduled to be completed in August 2024.

The **Mountain Island Lake Academy** project continues to progress in the construction document phase. The construction document submittal will be issued in January for final review and comments. The early steel and roof procurement package has been released for bids by the construction manager; bids are due in late January 2022. The remaining scopes of work are scheduled for bid and award in late spring 2022. The project consists of a building addition containing a middle school gymnasium and visual and performing arts classrooms. Construction is scheduled to start in the spring 2022 and the project is scheduled to be completed August 2023.

The **New Elementary School (Elon, Hawk Ridge, Polo Relief)** project has completed the construction document phase and has submitted documents to LUESA for building permit approval. The NCDOT/CDOT traffic study continues to progress through multiple revisions and resubmissions. The teams are preparing documents for the public hearing phase of the rezoning process. The procurement phase of the project will begin in early 2022. Construction is scheduled to start in the spring of 2022 and the project is scheduled for completion August 2023. This new 45-classroom school will be located across from Ardrey Kell High School.

The **New Elementary School (Hidden Valley, JW Grier, Newell Relief)** architect is incorporating review comments into the final permitting and bid documents. The architect is preparing building permit documents for submission to LUESA in January 2022. The early steel and roofing packages have been approved by the BOE. The remaining unbid scopes of work are scheduled for bid and award in spring 2022. This new 45-classroom school will be located next to Northridge Middle School and is scheduled for occupancy August 2023.

The **New Elementary School (Windsor, Winterfield, Idlewild Relief)** project continues to progress in the development of the construction documents. The construction document submittal is due in January 2022. The Corps of Engineers have approved the required nationwide permit and we are awaiting state approval. The traffic engineer's draft traffic memorandum is being finalized for submission to CDOT. The early steel and roofing packages have been approved by the BOE. The remaining packages are scheduled for bid and award in spring 2022. This new 45-classroom school facility is scheduled for occupancy August 2023.

The **New High School (South, Ardrey Kell Relief)** project continues to progress with LUESA permitting approvals. The construction manager is preparing to issue bid documents to qualified bidders in January 2022. The design and CMS team are preparing documents for the public hearing phase of the rezoning process which is scheduled in January, approval is scheduled in February. The Corps of Engineers have review and approved the nationwide permit and we are awaiting state approval. This project consists of a new 100-classroom high school with athletic play fields and stadium.

## CONTROLS

Expenditures for the month of December were \$17.6M. This brings our fiscal year to date total to \$111.4M against the 2022 fiscal year cash flow projection of \$260M. The Controls team continues the reconciliation and closeout of completed 2013 and 2017 bond projects. Available funding is being accumulated to address potential supply chain and increased construction costs related to the COVID-19 pandemic.

Board of Education approval was received on December 14, 2021 for phase one of construction for the New Elementary School (Hidden Valley, J.W. Grier, Newell relief) project and the New Elementary School (Windsor, Winterfield, Idlewild relief) project. Phase one provides the steel and roofing and allows for early procurement due to the long lead times of these products.

The Controls team continues to submit notices of potential changes at school sites so senior staff can adequately evaluate any issues. Additionally, the Controls team continues the processing of contracts, invoices, preparing notices of potential change, change orders, pay applications and check requests for projects under construction. Captured construction cost data is used to prepare financial reports such as detailed cost reports, budget summaries, reconciliation to CMS books, revisions to and updated cash flows and complete special financial requests by CMS and Mecklenburg County. This process, along with data compilation and management, allows senior staff to provide the proper guidance/direction and accurate information to the program stakeholders.

## MWSBE

As of December 2021 the overall MWSBE utilization percentage related to design and construction of the 2017 bond projects is 49.11% which includes 21.19% participation by minority contractors, 27.01% by women contractors and 0.91% participation by small business contractors. This accounts for more than \$281 million of utilization by Minority, Women and Small Business Contractors.

---

The Diversity & Inclusion Office of Charlotte-Mecklenburg Schools continued to conduct several individual virtual orientations with new MWSBE contractors and prime contractors. In addition, team members also attended/hosted the following outreach sessions/pre-bid meetings and/or workforce development opportunities:

Outreach Sessions:

- Mecklenburg County Business Launchpad Roundtable
- NC Department of Administration Procurement Change Information Session
- American Contract Compliance Association National Training Institute Planning meeting

Over the next month, team members will continue to work with contractors interested in bidding on the upcoming school projects utilizing various virtual tools to communicate. Contractors are encouraged to review bid advertisements in Charlotte Observer and register as a vendor on the North Carolina Interactive Purchasing System for notification of the various opportunities.

## BOND PROGRESS SUMMARY As of December 2021

Funding Source and Value		Amount Committed/Pending	Amount Paid to Date	Amount Expended This Period
2013 Bond	\$301,699,770	\$300,539,851	\$290,539,851	\$2,843
2017 Bond	\$1,019,279,985	\$663,426,735	\$481,164,187	\$17,628,989
<b>Grand Total</b>	<b>\$1,320,979,755</b>	<b>\$963,966,586</b>	<b>\$771,704,038</b>	<b>\$17,631,832</b>



---

## UPCOMING MAJOR CONSTRUCTION PROCUREMENT DATES *Three Month Look Ahead*

<b><u>School Name</u></b>	<b><u>Bid Dates*</u></b>
<b>Mountain Island</b> <i>(Bid Package 1 managed by CM - Whiting-Turner)</i>	January 2022
<b>New Elementary (Hidden Valley, JW Grier, Newell)</b> <i>(Bids managed by CM - Edifice)</i>	February 2022
<b>New Elementary (Elon, Hawk Ridge, Polo Ridge)</b> <i>(Bids managed by CM - Balfour Beatty)</i>	February 2022
<b>New HS (Ardrey Kell, South Mecklenburg)</b> <i>(Bids managed by CM - Messer)</i>	February 2022
<b>E.E. Waddell</b> <i>(Bids managed by Architect, Moseley)</i>	February 2022

*\* NOTE: Work In Progress...Dates Subject to Change.*

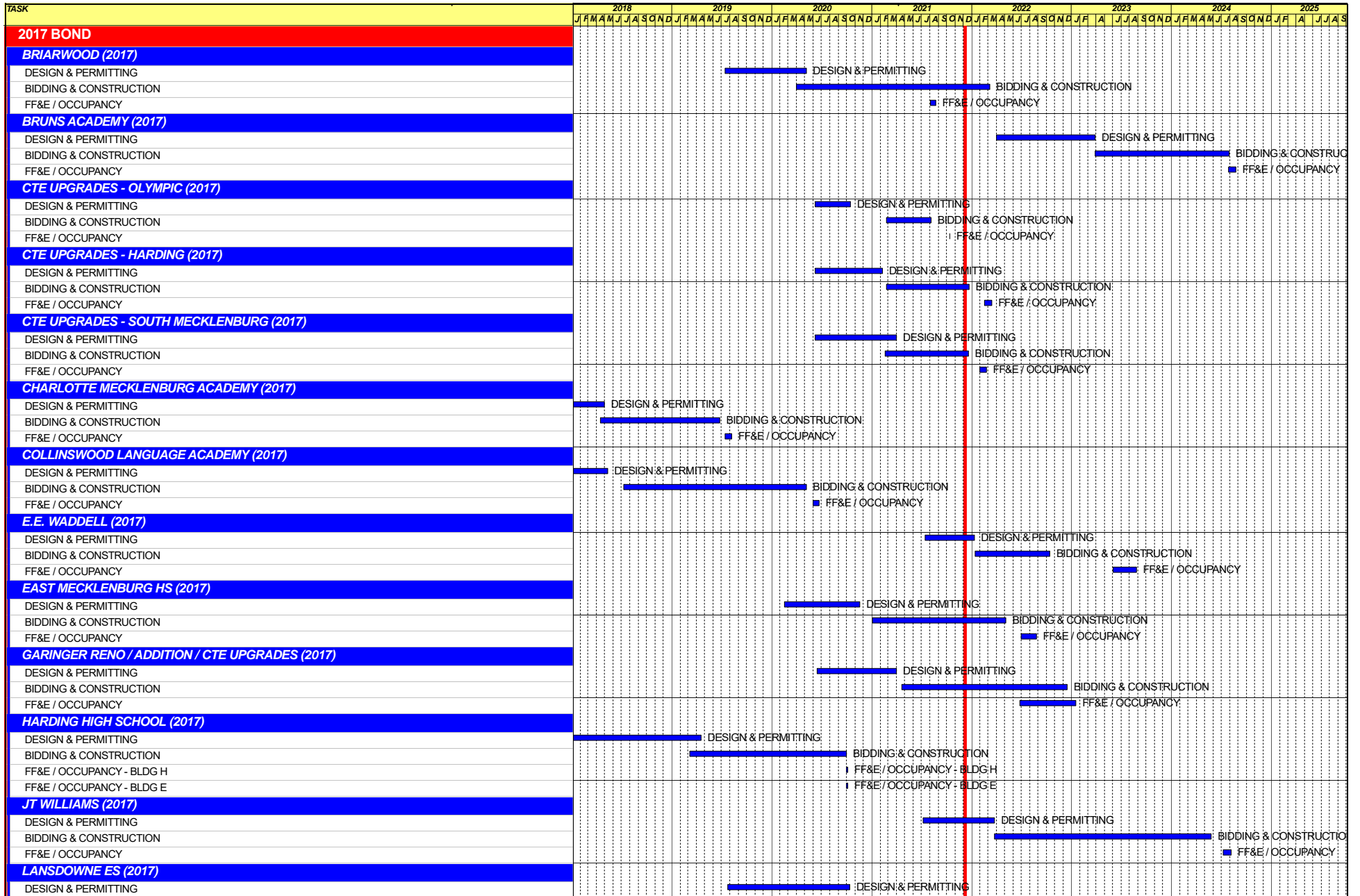
---

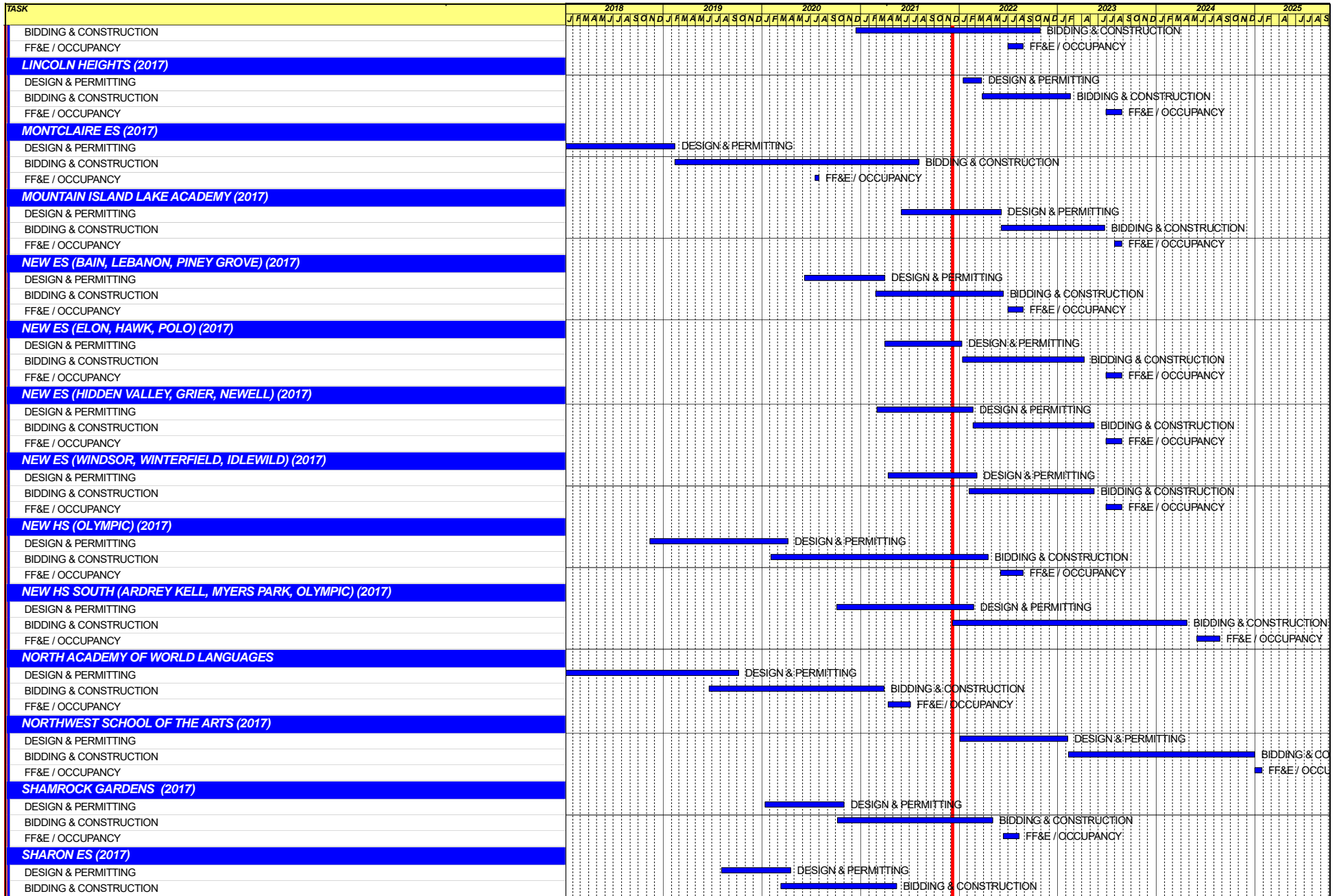
## SWING SPACE UTILIZATION

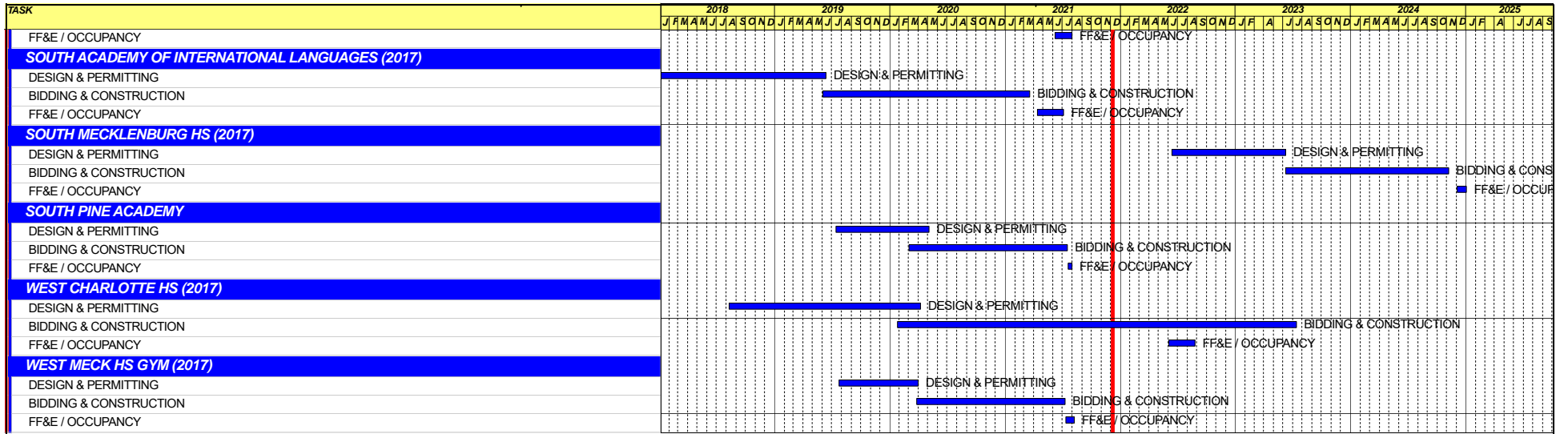
Creating a temporary space for students and staff to occupy during construction on a school’s campus has proven to be beneficial to the project’s schedule and cost and overall safety and efficiency of school operations. When the renovation or expansion of a facility is performed and the facility must remain functionally operational, there are benefits to the owner in using swing space.

We have successfully utilized both onsite and offsite swings. The most desirable swings are “offsite” ones. Onsite swing using mobiles or modulars, likewise has been successfully used. The following is a summary of current swing options planned or in use.

<u>School</u>	<u>No. of Mobiles/Relocation Site</u>	<u>Status (From – To)</u>
Shamrock	Lincoln Heights	August 2020 – August 2022







Capital Improvements Program  
***Projects in Design or Under Construction***

School	Architect	General Contractor/CM
<b>Projects In Design</b>		
E.E. Waddell (17)	Moseley	TBD
J.T. Williams (17)	FWA	New Atlantic
Lincoln Heights Repurpose (17)	Neighboring Concepts	TBD
Mountain Island School (17)	ADW	Whiting-Turner
New ES (Elon,Hawk Ridge, Polo Ridge) (17)	Little Diversified	Balfour Beatty
New ES (Hidden Valley, JW Grier, Newell) (17)	ADW	Edifice, Inc.
New ES (Windsor, Winterfield, Idlewild) (17)	Neighboring Concepts	Rodgers-Holt Brothers
New HS (South, Ardrey) (17)	Ratio	Messer
<b>Projects in Bid/Award/Construction Phase</b>		
CTE (Harding, Olympic, South) (17)	MPS	Branch Brownstone
East Mecklenburg High School (17)	Morris Berg	Turner Construction
Garinger Addition/Renovation & CTE (17)	LS3P	Balfour Beatty
Lansdowne Elementary School Replacement (17)	Perkins Eastman	Edifice, Inc.
New ES (Bain, Lebanon Rd, Piney Grove) (17)	FWA	Metcon
New High School (Olympic Relief) (17)	Little Diversified	Edifice, Inc.
Shamrock Gardens Elementary School Replacement (17)	Little Diversified	Rodgers-Holt Brothers
West Charlotte High School (17)	LS3P	Rodgers-Holt Brothers

Capital Improvements Program  
***Projects Substantially Completed/Closed \****

School	Turnover Year	Architect	General Contractor
Briarwood Elementary School Replacement (17)	Aug-21	ADW	New Atlantic Contracting
Montclair Elementary School (17)	Aug-21	WHN	Messer Construction
North Academy of World Languages (17)	Aug-21	ADW	New Atlantic Contracting
Sharon Elementary School (17)	Aug-21	Clark Nexsen	Samet
South Academy of International Languages (17)	Aug-21	FWA	Messer Construction
South Pine Academy (17)	Aug-21	FWA	Metcon
West Mecklenburg Gym (17)	Aug-21	Moseley	Barnhill/D.A. Everett
Collinswood Language Academy (17)	Aug-20	Perkins Eastman	Turner Construction
Harding High School Renovation (17)	Aug-20	SFLA	Barnhill Contracting
Rea Farms STEAM Academy (13)	Aug-20	Little Diversified	Balfour Beatty
Ashley Park K-8 Conversion (13)	Aug-19	ADW	Turner Construction
Druid Hills K-8 Conversion (13)	Aug-19	ADW	Edifice, Inc.
Selwyn Elementary (13)	Aug-19	Clark Nexsen	Balfour Beatty
Charlotte Mecklenburg Academy (17)	Aug-19	KSQ	Edifice, Inc.
Davidson K-8 (13)	Aug-19	Little Diversified	Gilbane
CTE - North Mecklenburg High (13)	Aug-19	LS3P	Shiel Sexton
CTE - Garinger (13)	Mar-19	LS3P	Hostetter & Son
CTE - Independence (13)	Mar-19	LS3P	D.E. Brown
CTE - West Mecklenburg (13)	Mar-19	LS3P	Hostetter & Son
Charlotte East Language Academy (13)	Aug-18	Morris Berg	Edifice, Inc
Myers Park High School Phase 3 (13)	Aug-18	Boomerang Design	BE&K
Northridge Middle (13)	Aug-18	Morris Berg	Barnhill Contracting
Myers Park High Bldg 2 (13)	Feb-18	Boomerang Design	BE&K
East Mecklenburg High Addition (13)	Jan-18	Bergman (fna Gantt Huberman)	Edifice, Inc.
J.M. Alexander Middle (13)	Aug-17	FWA Group	Balfour Beatty
Northwest School of the Arts Renovation (13)	Aug-17	Moseley	Turner Construction
Renaissance West STEAM Academy (13)	Aug-17	Little Diversified	Rodgers Construction
South Mecklenburg High Addition (13)	Jul-17	SFLA	Barnhill Contracting
Myers Park High Bldg 1 (13)	Sep-16	Boomerang	KBR
Statesville Road Elementary (13)	Aug-16	ADW	JE Dunn
Nations Ford Elementary (13)	Aug-16	Wash Hatem Nelson	Messer Construction
Olympic High Addition (13)	Aug-16	McMillan, Pazdan, Smith	Turner Construction
Lawrence Orr Elementary (07)	Aug-15	Cort Architectural Group	DH Griffin/Metcon
Parkside Elementary (07)	Aug-15	Wash Hatem Nelson	Clancy & Theys
Hawthorne High Renovations (07)	Aug-15	Morris-Berg	Balfour Beatty
Newell Elementary (07)	Aug-15	Perkins Eastman	New Atlantic Contracting
Ranson Middle (07)	Aug-15	Morris-Berg	Edifice, Inc.
Vance High	Jan-15	LS3P	Matthews Construction Co., Inc.
Garinger High - Renovations/Addition	Aug-14	Adams Group Architects	Turner Construction
Olympic High - Stadium	Aug-14	Site Solutions	Turner Construction
West Mecklenburg High - Stadium	Aug-14	Site Solutions	Turner Construction
Collinswood - Indoor Air Quality	Aug-14	PEA	The Bowers Group
Lansdowne - Indoor Air Quality	Aug-14	AeroRaq	Tyler 2
McKee Road - Indoor Air Quality	Aug-14	McCracken & Lopez	Godfrey Construction
Garinger High - Track & Field	Jul-14	Site Solutions	Turner Construction
Independence High - Gym	Jun-14	Shook Kelly	Shelco, Inc. (CM)
Palisades Park Elementary	May-14	Wash Hatem Nelson	Clancy & Theys
East Mecklenburg High Auditorium	Jan-14	Gantt Huberman Associates	Godfrey Construction Co., Inc.
Pineville Elementary	Aug-13	Cort Architectural Group	Beam Construction Co., Inc.
Bain Elementary	Aug-13	ADW	Edison Foard
Grand Oak Elementary	Aug-13	ADW	Matthews Construction Co., Inc.
McClintock Middle	Aug-13	FWA Group	Shelco, Inc.

# Capital Improvements Program

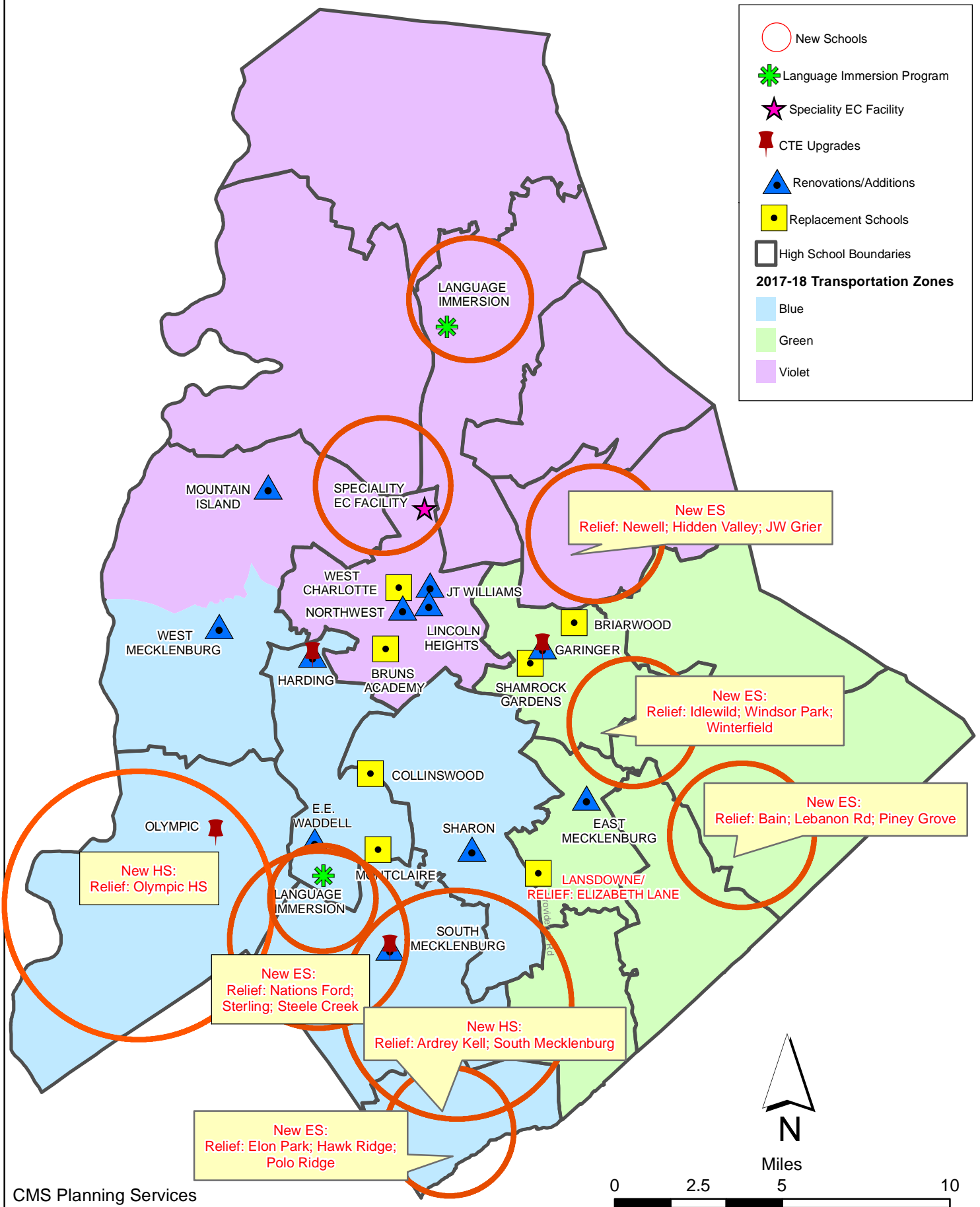
## ***Projects Substantially Completed/Closed \****

School	Turnover Year	Architect	General Contractor
Sedgefield Elementary Demolition	Oct-12	Cort Architectural Group	EHG, LLC
Alexander Graham Middle Gym Reno	Aug-12	MBAJ Architecure	Edison Foard
First Ward - Demolition & Bus lot	Aug-12	MBAJ Architecure	T.K. Browne
South Meck High Parking Lot Renovation	Aug-12	Little Diversified	Sorenson Gross
Cochrane Middle - Kitchen	Aug-11	MBAJ Architecure	Sorenson Gross
Hough High	Aug-10	Little Diversified	Rodgers Construction
Rocky River High	Aug-10	Little Diversified	Balfour Beatty

*Projects closed prior to 2010 are not shown*



# CMS Capital Improvement Plan 2017 Bond Projects



# PROJECT STATUS REPORT



## Monthly Project Status 2017 Bond Summary December 2021

Project	Current Project Estimate	Project Scope	** Occupy On	Design Phase	Construction Progress	Project Status
Briarwood Elementary School (17)	\$ 31,962,730	45-classroom replacement facility; replaces school built in 1956.	August 2021	Complete	96 %	The construction manager for Briarwood Elementary Replacement School progressed well with the installation of the curb and gutter for the staff/visitor lot, bus lot and main entrance road. Stone base was installed on the entrance road and staff/visitor lot. The installation of the sidewalks began and will continue into the following month. The concrete perimeter was installed for the two playgrounds. The remaining site work is scheduled to be completed in 2022.
Bruns Academy (17)	\$ 39,784,927	New 45-classroom elementary school (K-5); replaces old school built in 1969.	August 2024	Not Started	0 %	This project is scheduled to start design Spring 2022.
Career and Technology Education (17)	\$ 10,159,765	Phase I CTE upgrades at Olympic, Harding, Garinger and South Mecklenburg.	January 2022	Complete	89 %	The CTE projects at Harding and South Mecklenburg continued construction renovations. The projects have progressed as finish paint and floors are complete. The mechanical, electrical and plumbing trades are wrapping up and finalizing their scopes of work. Mecklenburg County Building Standards will be conducting final inspections shortly. The project team is working through kitchen equipment shipping issues and may have to substitute or provide temporary equipment to open for students and staff. The CTE department is working through delays to the FF&E that is planned for use in the new Harding suite. The Harding project consists of renovations to existing classrooms in the auditorium building to develop a suite of technology classrooms. The project at South Mecklenburg consists of renovating the old kitchen area into a culinary arts lab and classroom.

# Monthly Project Status

2017 Bond Summary

December 2021

Project	Current Project Estimate	Project Scope	** Occupy On	Design Phase	Construction Progress	Project Status
Charlotte-Mecklenburg Academy (17)	\$ 17,699,220	New EC school located on the old Statesville Elementary School site.	August 2019	Complete	100 %	Project is complete.
Collinswood Language Academy (17)	\$ 41,547,540	New 63-classroom K-8 facility on the site of the Smith Family Center.	August 2020	Complete	100 %	Project is complete.
E.E. Waddell (17)	\$ 5,137,367	Repurpose current E.E. Waddell to reopen as a magnet high school.	August 2023	Construction Documents	0 %	The E.E. Waddell High School project has been submitted to LUESA and continues to progress in the building permit approval process. Coordination between CMS Architecture department, CMS facilities and school Principals continue with collaboration in their final planning efforts. The project consists of light renovations to the existing science classrooms, maker space, lobby, HVAC work, limited VCT and acoustical ceilings.
East Mecklenburg High School (17)	\$ 15,058,594	This project will provide for the design, and construction of a new 30 classroom building.	August 2022	Complete	57 %	The construction manager for East Mecklenburg High School completed the four-ply built up roof which will allow trade work to continue. Above ceiling mechanical, electrical and plumbing (MEP) trades will continue. The spray foam insulation is complete and brick veneer is progressing. The interior masonry around the bathrooms is also progressing.
Garinger High School (17)	\$ 5,986,979	Project includes the design and construction for renovations of 300 building and a new 16 classroom building.	January 2023	Complete	26 %	The Garinger Addition and Renovation construction manager continued making good progress to maintain the project schedule. The roof, exterior sheathing, air barrier and spray foam were installed. The mason began the installation of the architectural masonry on the exterior of the building. The interior stud framing continued throughout the 1st and 2nd floors. The MEP trades continued with in wall and above ceiling rough-ins.
Harding High School (17)	\$ 13,805,263	Renovation of the kitchen, cafeteria, existing gym (aux) and the addition of a new gym.	August 2020	Complete	100 %	Construction Manager has change items that will be completed summer 2021 and is finalizing financial reconciliation.

# Monthly Project Status

2017 Bond Summary

December 2021

Project	Current Project Estimate	Project Scope	** Occupy On	Design Phase	Construction Progress	Project Status
JT Williams (17)	\$ 15,732,600	Project includes building renovations to J.T. Williams Montessori magnet.	August 2024	Design Development	0 %	The JT Williams Secondary Montessori project is in the design development phase. The submittal is being reviewed by CMS and the construction manager and is expected to complete this month. The project's base scope focuses on required civil improvements, architectural and MEP renovations in the 100 and 200 buildings. The renovations to the remaining campus buildings mechanical and classroom lighting systems are being designed and will be bid as alternates. A 10-classroom modular will be used for swing and future space at the school site. Continuing development of the phasing plan and schedule are under way.
Lansdowne Elementary School (17)	\$ 35,378,834	New 45-classroom school; replaces old school built in 1959 and relieve crowding at Elizabeth Lane ES.	August 2022	Complete	60 %	The Lansdowne Elementary School construction manager continues installing the brick veneer. The roof has been installed in most areas and will complete shortly. The MEP trades continue with rough-ins throughout the facility and above ceiling. The drywall is well underway in the two-story classroom wing and metal stud walls are being framed and finalized in the administration area.
Lincoln Heights Elementary School (17)	\$ 4,588,675	Repurpose and reopen as magnet school.	August 2023	Construction Documents	0 %	Shamrock Gardens will be utilizing the Lincoln Heights Elementary building as swing space August 2020 - August 2022. Playgrounds were replaced and new digital signage was installed summer 2020. Based on Board approval in May 2021 the occupancy date has been moved to 2023.
Montclair Elementary School (17)	\$ 28,559,390	New 45-classroom replacement facility replacing school built in 1958.	August 2020	Complete	99 %	This month the construction manager for the Montclair Elementary School completed the final phase of work on the project. The new 45-classroom elementary school building was occupied in August.

# Monthly Project Status

2017 Bond Summary

December 2021

Project	Current Project Estimate	Project Scope	** Occupy On	Design Phase	Construction Progress	Project Status
Mountain Island Lake Academy (17)	\$ 10,488,400	K-8 Phase 2 - New gymnasium and specialty classrooms.	August 2023	Construction Documents	0 %	The Mountain Island Lake Academy project continues to progress in the construction document phase. The construction document submittal will be issued in January for final review and comments. The early steel and roof procurement package has been released for bids by the construction manager; bids are due in late January 2022. The remaining scopes of work are scheduled for bid and award in late spring 2022.
New Elementary School (Bain, Lebanon, Piney Grove) (17)	\$ 30,455,951	New 45-classroom elementary school; relieves crowding at Bain, Lebanon Road, Piney Grove.	August 2022	Complete	48 %	The New Elementary School (Bain, Lebanon, Piney Grove Relief) construction manager continued installing brick veneer on multiple elevations. The roof installation has progressed at many areas allowing the drywall to begin in the two-story classroom wing. The MEP trades continue rough-ins throughout the facility. The site contractor has installed additional storm drains lines and continues to maintain erosion control. The team has also received a preliminary design to review for the required signal at the school entrance.
New Elementary School (Elon, Hawk Ridge, Polo Relief) (17)	\$ 50,856,961	New 45-classroom elementary school to relieve Elon, Hawk Ridge, Polo.	August 2023	Construction Documents	0 %	The New Elementary School (Elon, Hawk Ridge, Polo Relief) project has completed the construction document phase and has submitted documents to LUESA for building permit approval. The NCDOT/CDOT traffic study continues to progress through multiple revisions and resubmissions. The teams are preparing documents for the public hearing phase of the rezoning process. The procurement phase of the project will begin in early 2022.
New Elementary School (Hidden Valley, JW Grier, Newell) (17)	\$ 40,197,022	New 45-classroom elementary school; relieves overcrowding at Hidden Valley, J.W. Grier, Newell.	August 2023	Construction Documents	0 %	The New Elementary School (Hidden Valley, JW Grier, Newell Relief) architect is incorporating review comments into the final permitting and bid documents. The architect is preparing building permit documents for submission to LUESA in January 2022. The early steel and roofing packages have been approved by the BOE. The remaining unbids scopes of work are scheduled for bid and award in spring 2022.

# Monthly Project Status

2017 Bond Summary

December 2021

Project	Current Project Estimate	Project Scope	** Occupy On	Design Phase	Construction Progress	Project Status
New Elementary School (Windsor, Winterfield, Idlewild Relief) (17)	\$ 42,697,022	New 45-classroom elementary school to relieve Windsor, Winterfield, and Idlewild ES.	August 2023	Construction Documents	0 %	The New Elementary School (Windsor, Winterfield, Idlewild Relief) project continues to progress in the development of the construction documents. The construction document submittal is due in January 2022. The Corps of Engineers have approved the required nationwide permit and we are awaiting state approval. The traffic engineer's draft traffic memorandum is being finalized for submission to CDOT. The early steel and roofing packages have been approved by the BOE. The remaining packages are scheduled for bid and award in spring 2022.
New High School (17) (Olympic Relief)	\$ 109,908,793	New 100 classroom high school; relieves crowding at Olympic High School.	August 2022	Complete	86 %	The construction manager for the New High School Olympic Relief coordinated many trades throughout the facility to maintain the project schedule. Drywall, ceiling, paint and MEP installations activities continued throughout the building. The VCT contractor mobilized and started installations in the three-story classroom wing. Kitchen equipment was delivered to the site to begin installation. The pool contractor continued with the installation of the equipment and the finishes. Sidewalks and planting installation continued along with other miscellaneous exterior components.
New High School (South, Ardrey) (17)	\$ 154,930,460	New 100 classroom high school to relieve South Mecklenburg, Ardrey Kell and Myers Park HS.	August 2024	Construction Documents	0 %	The New High School (South, Ardrey Kell Relief) project continues to progress with LUESA permitting approvals. The construction manager is preparing to issue bid documents to qualified bidders in January 2022. The design and CMS team are preparing documents for the public hearing phase of the rezoning process which is scheduled in January, approval is scheduled in February. The Corps of Engineers have review and approved the nationwide permit and we are awaiting state approval.
North Academy of World Languages	\$ 42,359,367	New 66 classroom K-8 Language Immersion facility located on the old J.M. Alexander Middle School site.	August 2021	Complete	99 %	The project closeout and final financial reconciliation process with the construction manager is underway.

# Monthly Project Status

2017 Bond Summary

December 2021

Project	Current Project Estimate	Project Scope	** Occupy On	Design Phase	Construction Progress	Project Status
Northwest School of the Arts (17)	\$ 20,467,000	Replace classroom building built in 1952 and build classroom addition that supports program.	August 2024	Not Started	0 %	Design to start in early 2022.
Shamrock Gardens Elementary School (17)	\$ 32,358,351	New 45-classroom replacement facility.	August 2022	Complete	64 %	The Shamrock Gardens Elementary School construction manager continued to focus on the installation of the brick veneer and exterior components of the building. In addition the installation of interior metal studs, drywall, above ceiling MEP and ceiling grid continued throughout the building.
Sharon Elementary School (17)	\$ 9,475,862	Add 16 classroom building and increase capacity of cafeteria.	August 2021	Complete	99 %	The project closeout and final financial reconciliation process with the construction manager is underway.
South Academy of International Languages (fka New K-8 School (South) (17)	\$ 41,959,367	New 71 classroom K-8 Language Immersion facility located on the old Nations Ford Elementary School site.	August 2021	Complete	99 %	The project closeout and final financial reconciliation process with the construction manager is underway.
South Mecklenburg High School (17)	\$ 15,622,927	Renovate/replace two classroom buildings built in 1958 to upgrade learning conditions.	January 2025	Not Started	0 %	Planning underway, design to start in 2022.
South Pine Academy	\$ 31,272,550	New 45-classroom elementary school to relieve Nations Ford, Sterling, and Steele Creek.	August 2021	Complete	99 %	The project closeout and final financial reconciliation process with the construction manager is underway.
West Charlotte High School (17)	\$ 109,977,166	New 100 classroom school to replace current facility built in 1954.	August 2022	Complete	73 %	The trade contractors continue to work throughout the West Charlotte High School facility. The interior finishes have progressed in many areas including setting equipment and finish painting. The wood gym floor has been installed, finishing will follow. The site contractor is pouring hardscapes around the facility including areas at the stadium. The gym equipment including basketball goals are installed and the pool deck has been poured. Casework and cabinets are being installed and the plumber is setting fixtures in the bathrooms. The lights are being installed in the classroom wing and the mechanical contractor has the heat running throughout the facility.
West Mecklenburg High School (17)	\$ 10,850,902	Provide new gymnasium, the existing gymnasium will become the auxilliary.	August 2021	Complete	99 %	The project closeout and final financial reconciliation process with the construction manager is underway.



# MONTHLY PROJECT PHOTOS

## PROJECT PROGRESS PHOTOS

---



New High School Olympic Relief

## PROJECT PROGRESS PHOTOS

---



New High School Olympic Relief



## PROJECT PROGRESS PHOTOS

---



New High School Olympic Relief

## PROJECT PROGRESS PHOTOS

---



New High School Olympic Relief



## PROJECT PROGRESS PHOTOS



New High School Olympic Relief



## PROJECT PROGRESS PHOTOS

---



West Charlotte High School Replacement

## PROJECT PROGRESS PHOTOS

---



West Charlotte High School Replacement



## PROJECT PROGRESS PHOTOS

---



West Charlotte High School Replacement

## PROJECT PROGRESS PHOTOS

---



West Charlotte High School Replacement



## PROJECT PROGRESS PHOTOS



West Charlotte High School Replacement

## PROJECT PROGRESS PHOTOS

---



Shamrock Gardens Elementary School



## PROJECT PROGRESS PHOTOS

---



Shamrock Gardens Elementary School

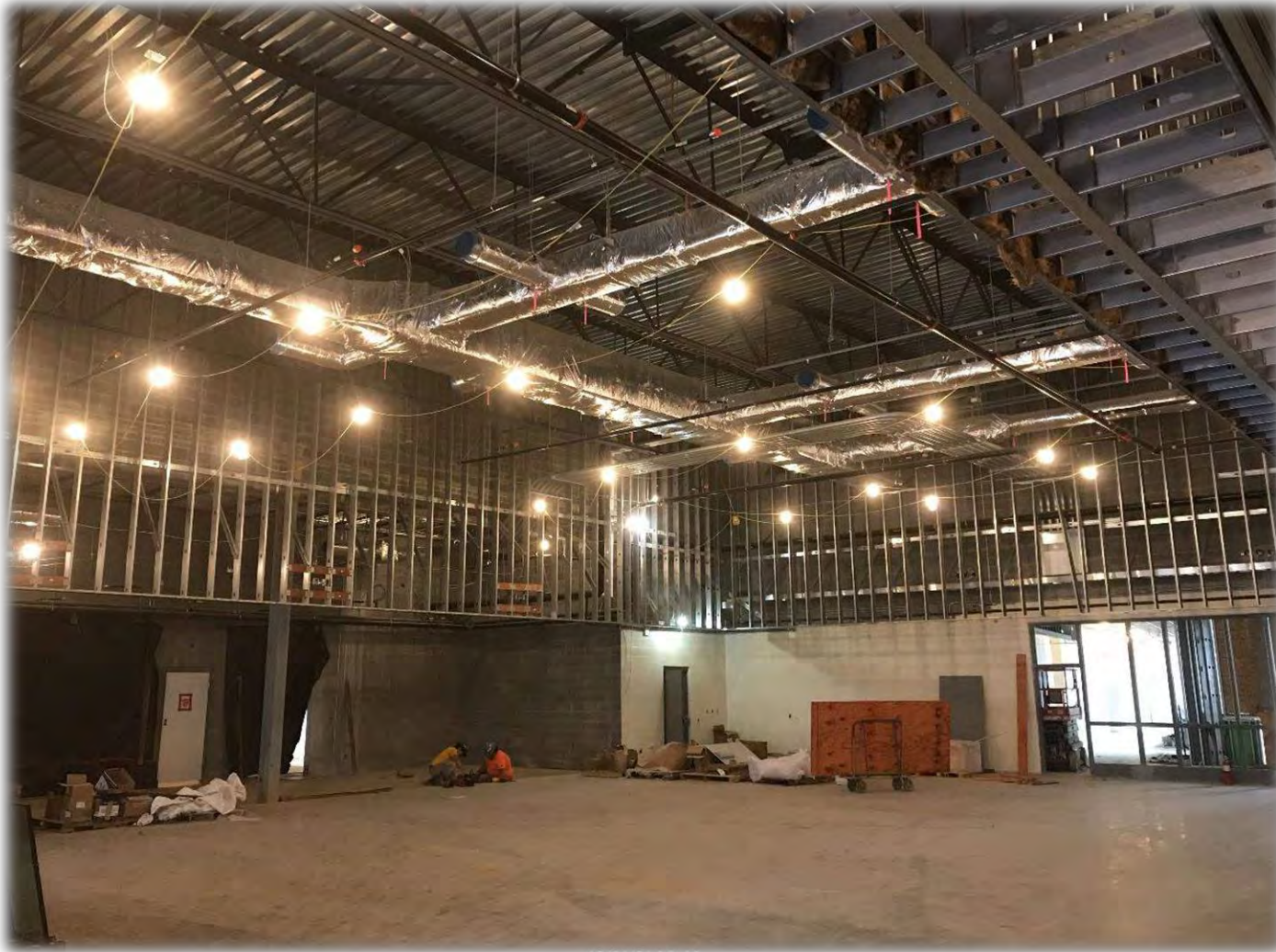
## PROJECT PROGRESS PHOTOS

---



Shamrock Gardens Elementary School





Shamrock Gardens Elementary School

## PROJECT PROGRESS PHOTOS

---



Lansdowne Elementary School



## PROJECT PROGRESS PHOTOS

---



Lansdowne Elementary School

## PROJECT PROGRESS PHOTOS



Lansdowne Elementary School



## PROJECT PROGRESS PHOTOS



Lansdowne Elementary School

## PROJECT PROGRESS PHOTOS



East Mecklenburg High School



## PROJECT PROGRESS PHOTOS

---



East Mecklenburg High School

## PROJECT PROGRESS PHOTOS

---



East Mecklenburg High School



## PROJECT PROGRESS PHOTOS

---



New ES (Bain, Lebanon, Piney Grove Relief)

## PROJECT PROGRESS PHOTOS



New ES (Bain, Lebanon, Piney Grove Relief)



## PROJECT PROGRESS PHOTOS

---



New ES (Bain, Lebanon, Piney Grove Relief)

## PROJECT PROGRESS PHOTOS

---



New ES (Bain, Lebanon, Piney Grove Relief)



## PROJECT PROGRESS PHOTOS

---



Garinger High School

## PROJECT PROGRESS PHOTOS

---



Garinger High School



## PROJECT PROGRESS PHOTOS

---



Garinger High School

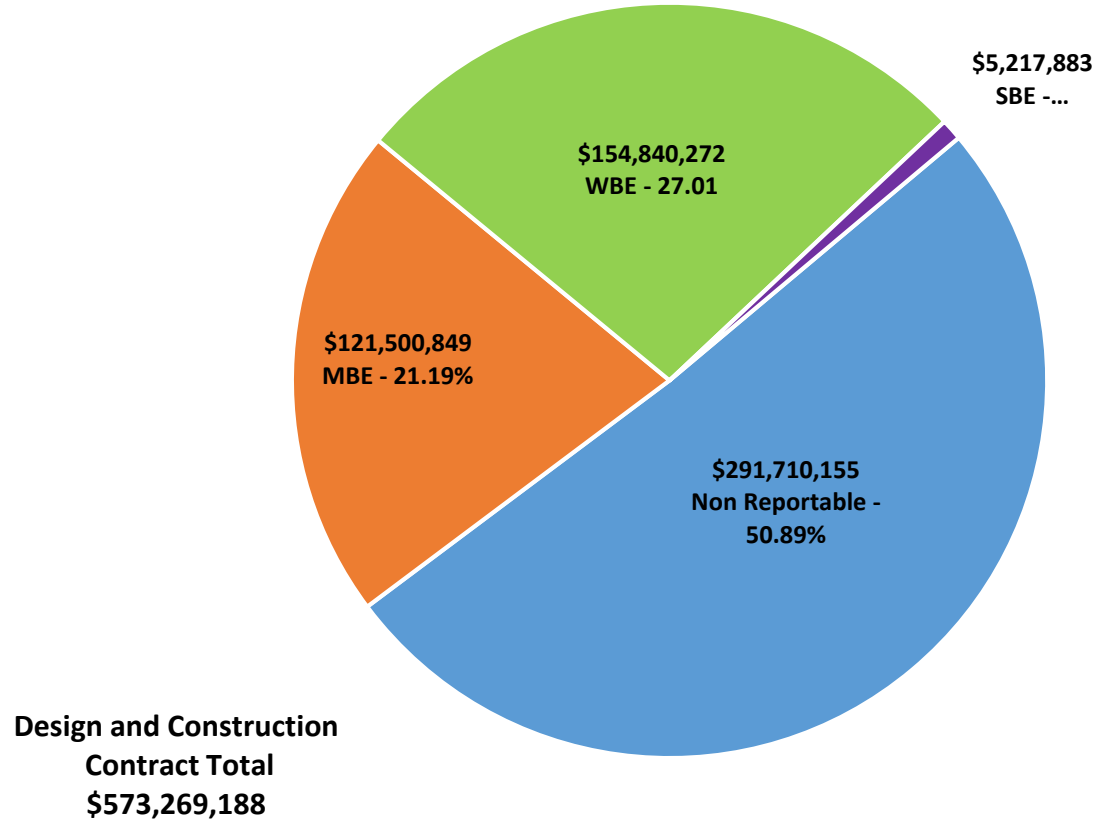
# MWSBE PARTICIPATION REPORT



Facility	Contract Amount	African American MBE\$	%	Other MBE \$	%	Total MBE \$	%	Other WBE \$	%	Other SBE \$	%	Total	%
<u>Briarwood Elementary School (17)</u>	\$28,723,186	\$4,011,116	13.96%	\$2,424,277	8.44%	\$6,435,393	22.40%	\$1,878,126	6.54%	\$152,902	0.53%	\$8,466,421	29.48%
<u>Career and Technology Education (17)</u>	\$5,922,484	\$548,729	9.27%	\$300,652	5.08%	\$849,381	14.34%	\$246,751	4.17%	\$65,475	1.11%	\$1,161,607	19.61%
<u>Charlotte-Mecklenburg Academy (17)</u>	\$17,035,852	\$198,536	1.17%	\$1,029,192	6.04%	\$1,227,728	7.21%	\$872,755	5.12%	\$13,200	0.08%	\$2,113,683	12.41%
<u>Collinswood Language Academy (17)</u>	\$38,527,740	\$649,287	1.69%	\$1,613,103	4.19%	\$2,262,390	5.87%	\$11,362,566	29.49%	\$9,328	0.02%	\$13,634,284	35.39%
<u>E.E. Waddell (17)</u>	\$157,805	\$0	0.00%	\$0	0.00%	\$0	0.00%	\$10,950	6.94%	\$0	0.00%	\$10,950	6.94%
<u>East Mecklenburg High School (17)</u>	\$12,575,074	\$603,811	4.80%	\$532,460	4.23%	\$1,136,271	9.04%	\$490,382	3.90%	\$681,075	5.42%	\$2,307,728	18.35%
<u>Garinger High School (17)</u>	\$4,218,434	\$49,330	1.17%	\$412,572	9.78%	\$461,902	10.95%	\$165,433	3.92%	\$0	0.00%	\$627,335	14.87%
<u>Harding High School (17)</u>	\$13,015,986	\$1,504,505	11.56%	\$310,356	2.38%	\$1,814,862	13.94%	\$3,846,831	29.55%	\$176	0.00%	\$5,661,869	43.50%
<u>JT Williams (17)</u>	\$1,268,350	\$2,000	0.16%	\$20,000	1.58%	\$22,000	1.73%	\$0	0.00%	\$0	0.00%	\$22,000	1.73%
<u>Lansdowne Elementary School (17)</u>	\$30,617,679	\$2,229,635	7.28%	\$468,305	1.53%	\$2,697,940	8.81%	\$2,389,027	7.80%	\$223,625	0.73%	\$5,310,592	17.34%
<u>Lincoln Heights Elementary School (17)</u>	\$432,426	\$92,274	21.34%	\$18,800	4.35%	\$111,074	25.69%	\$0	0.00%	\$74,503	17.23%	\$185,577	42.92%
<u>Montclair Elementary School (17)</u>	\$26,093,860	\$3,617,952	13.87%	\$2,260,381	8.66%	\$5,878,333	22.53%	\$5,729,641	21.96%	\$518,632	1.99%	\$12,126,605	46.47%
<u>Mountain Island Lake Academy (17)</u>	\$797,565	\$0	0.00%	\$36,650	4.60%	\$36,650	4.60%	\$19,550	2.45%	\$0	0.00%	\$56,200	7.05%
<u>New Elementary School (Bain, Leban</u>	\$26,301,565	\$4,678,087	17.79%	\$18,841,591	71.64%	\$23,519,678	89.42%	\$1,214,672	4.62%	\$308,680	1.17%	\$25,043,030	95.21%
<u>New Elementary School (Elon, Hawk</u>	\$7,243,308	\$0	0.00%	\$0	0.00%	\$0	0.00%	\$61,240	0.85%	\$0	0.00%	\$61,240	0.85%
<u>New Elementary School (Hidden Vall</u>	\$7,675,488	\$0	0.00%	\$99,674	1.30%	\$99,674	1.30%	\$35,500	0.46%	\$25,600	0.33%	\$160,774	2.09%
<u>New Elementary School (Windsor, W</u>	\$3,516,780	\$1,456,670	41.42%	\$258,000	7.34%	\$1,714,670	48.76%	\$167,400	4.76%	\$0	0.00%	\$1,882,070	53.52%
<u>New High School (17) (Olympic Relief</u>	\$98,154,986	\$13,312,696	13.56%	\$5,874,324	5.98%	\$19,187,020	19.55%	\$8,458,793	8.62%	\$766,550	0.78%	\$28,412,363	28.95%
<u>New High School (South, Ardrey) (17)</u>	\$7,132,164	\$13,500	0.19%	\$91,000	1.28%	\$104,500	1.47%	\$507,465	7.12%	\$27,500	0.39%	\$639,465	8.97%
<u>North Academy of World Languages</u>	\$38,352,174	\$1,688,775	4.40%	\$1,575,863	4.11%	\$3,264,638	8.51%	\$3,471,693	9.05%	\$437,418	1.14%	\$7,173,748	18.70%
<u>Northwest School of the Arts (17)</u>	\$145,000	\$0	0.00%	\$0	0.00%	\$0	0.00%	\$0	0.00%	\$0	0.00%	\$0	0.00%
<u>Shamrock Gardens Elementary Scho</u>	\$27,979,335	\$2,157,264	7.71%	\$1,468,047	5.25%	\$3,625,311	12.96%	\$22,895,608	81.83%	\$275,594	0.98%	\$26,796,513	95.77%
<u>Sharon Elementary School (17)</u>	\$8,508,547	\$278,444	3.27%	\$338,513	3.98%	\$616,956	7.25%	\$926,873	10.89%	\$223,725	2.63%	\$1,767,554	20.77%
<u>South Academy of International Lang</u>	\$37,689,525	\$6,023,141	15.98%	\$2,431,071	6.45%	\$8,454,212	22.43%	\$10,755,611	28.54%	\$347,799	0.92%	\$19,557,622	51.89%

Facility	Contract Amount	African American MBE\$	%	Other MBE \$	%	Total MBE \$	%	Other WBE \$	%	Other SBE \$	%	Total	%
<u>South Mecklenburg High School (17)</u>	\$472	\$0	0.00%	\$0	0.00%	\$0	0.00%	\$0	0.00%	\$0	0.00%	\$0	0.00%
<u>South Pine Academy</u>	\$26,415,366	\$916,165	3.47%	\$19,416,086	73.50%	\$20,332,251	76.97%	\$4,342,256	16.44%	\$237,754	0.90%	\$24,912,261	94.31%
<u>West Charlotte High School (17)</u>	\$94,990,975	\$15,377,313	16.19%	\$1,519,700	1.60%	\$16,897,014	17.79%	\$73,043,834	76.90%	\$544,572	0.57%	\$90,485,419	95.26%
<u>West Mecklenburg High School (17)</u>	\$9,777,063	\$283,809	2.90%	\$467,193	4.78%	\$751,002	7.68%	\$1,947,316	19.92%	\$283,775	2.90%	\$2,982,093	30.50%
<b>Grandtotal</b>	\$573,269,188	\$59,693,039	10.41%	\$61,807,810	10.78%	\$121,500,849	21.19%	\$154,840,272	27.01%	\$5,217,883	0.91%	\$281,559,003	49.11%

## MWSBE Participation 2017 Bond Projects



# PROJECT CONTROLS



**CHARLOTTE-MECKLENBURG BOARD OF EDUCATION**  
**2013 BOND SERIES-CAPITAL IMPROVEMENT PROGRAM**  
**BUDGET STATUS REPORT**

	Original Project Budget	Current Project Budget	Committed Amount	Approved Change Orders	Total Committed	Pending Commitments	To Be Committed	Prev Paid To Date	Paid To Date	Balance To Complete	Monthly Expenditure
	(A)	(B)	(C)	(D)	(E)=C+D	(F)	(G)=(B-E-F)	(H)	(I)	(J)=(B-I)	(K)=(I-H)
<b><u>A. REPLACEMENT &amp; RENOVATIONS</u></b>											
1 Career & Technology Education Institutes Phase 1:	\$8,640,000	\$18,697,857	\$6,963,309	\$11,734,547	\$18,697,856	\$0	\$1	\$9,454,421	\$9,457,264	\$9,240,593	\$2,843
2 Davidson K-8 Conversion	\$9,500,000	\$13,461,149	\$2,131,151	\$11,329,998	\$13,461,149	\$0	\$0	\$13,461,149	\$13,461,149	\$0	\$0
3 J.M. Alexander Middle Replacement	\$30,672,000	\$29,845,539	\$4,502,518	\$25,343,021	\$29,845,539	\$0	\$0	\$29,845,539	\$29,845,539	\$0	\$0
4 Nations Ford Elementary Replacement	\$19,440,000	\$19,231,603	\$3,958,869	\$15,272,733	\$19,231,603	\$0	\$0	\$19,231,604	\$19,231,604	\$0	\$0
5 Northwest School of the Arts	\$12,420,000	\$12,868,718	\$2,047,917	\$10,820,801	\$12,868,718	\$0	\$0	\$12,868,719	\$12,868,719	\$0	\$0
6 Oakhurst STEAM Magnet Elementary/Starmount	\$5,940,000	\$5,407,812	\$3,471,397	\$1,936,415	\$5,407,812	\$0	\$0	\$5,407,812	\$5,407,812	\$0	\$0
7 Pre-K-8 Conversions Phase II: Ashley Park/ Bruns	\$24,732,000	\$19,700,808	\$4,167,669	\$15,533,138	\$19,700,807	\$0	\$0	\$19,700,807	\$19,700,807	\$0	\$0
8 Selwyn Elementary	\$2,592,000	\$4,624,831	\$744,799	\$3,880,032	\$4,624,831	\$0	\$0	\$4,624,831	\$4,624,831	\$0	\$0
9 Statesville Road Elementary	\$20,340,000	\$20,648,510	\$5,081,473	\$15,567,037	\$20,648,509	\$0	\$0	\$20,648,509	\$20,648,509	\$0	\$0
<b>Total Replacement &amp; Renovations</b>	<b>\$134,276,000</b>	<b>\$144,486,825</b>	<b>\$33,069,102</b>	<b>\$111,417,722</b>	<b>\$144,486,824</b>	<b>\$0</b>	<b>\$1</b>	<b>\$135,243,390</b>	<b>\$135,246,233</b>	<b>\$9,240,592</b>	<b>\$2,843</b>
<b><u>B. RESPONSE TO ENROLLMENT GROWTH</u></b>											
1 East Mecklenburg High Addition	\$12,744,000	\$10,988,287	\$3,369,684	\$7,618,603	\$10,988,287	\$0	\$0	\$10,988,287	\$10,988,287	\$0	\$0
2 Myers Park High Addition	\$22,248,000	\$11,040,942	\$1,207,493	\$9,833,448	\$11,040,942	\$0	\$0	\$11,040,941	\$11,040,941	\$0	\$0
3 Northridge Middle Addition	\$6,448,000	\$6,366,170	\$2,114,306	\$4,251,865	\$6,366,171	\$0	\$0	\$6,366,171	\$6,366,171	\$0	\$0
4 Olympic High Addition/Renovation	\$8,964,000	\$8,947,310	\$2,002,694	\$6,944,615	\$8,947,310	\$0	\$0	\$8,947,310	\$8,947,310	\$0	\$0
5 South Mecklenburg High Addition	\$18,360,000	\$16,307,355	\$2,922,282	\$13,385,073	\$16,307,355	\$0	\$0	\$16,307,355	\$16,307,355	\$0	\$0
6 Charlotte East Language Academy (FKA -New Lang	\$30,376,000	\$31,387,929	\$5,740,182	\$25,647,747	\$31,387,929	\$0	\$0	\$31,387,929	\$31,387,929	\$0	\$0
7 Rea Farms STEAM Academy	\$31,376,000	\$40,476,000	\$9,134,476	\$30,187,065	\$39,321,541	(\$5,460)	\$1,159,919	\$38,871,566	\$38,871,566	\$1,604,434	\$0
8 Renaissance West STEAM Academy (FKA New Pre-	\$30,376,000	\$31,698,952	\$5,667,388	\$26,031,564	\$31,698,952	\$0	\$0	\$31,698,952	\$31,698,952	\$0	\$0
<b>Total Response to Enrollment Growth</b>	<b>\$160,892,000</b>	<b>\$157,212,946</b>	<b>\$32,158,506</b>	<b>\$123,899,981</b>	<b>\$156,058,487</b>	<b>(\$5,460)</b>	<b>\$1,159,919</b>	<b>\$155,608,511</b>	<b>\$155,608,511</b>	<b>\$1,604,435</b>	<b>\$0</b>
<b><u>C. CONTINGENCY</u></b>											
	\$0	\$0	\$0	\$0	\$0	\$0	\$0	\$0	\$0	\$0	\$0
<b>Total Contingency</b>	<b>\$0</b>	<b>\$0</b>	<b>\$0</b>	<b>\$0</b>	<b>\$0</b>	<b>\$0</b>	<b>\$0</b>	<b>\$0</b>	<b>\$0</b>	<b>\$0</b>	<b>\$0</b>
<b>TOTAL LOCAL BOND PROGRAM</b>	<b>\$295,168,000</b>	<b>\$301,699,771</b>	<b>\$65,227,608</b>	<b>\$235,317,703</b>	<b>\$300,545,311</b>	<b>(\$5,460)</b>	<b>\$1,159,920</b>	<b>\$290,851,901</b>	<b>\$290,854,744</b>	<b>\$10,845,027</b>	<b>\$2,843</b>

Original project estimated costs approved by the Board Of Education on July 23, 2013 and approved by the voters of Mecklenburg County on November 5, 2013.

Note: Mecklenburg County's appropriated interest from COPS to increase funding for the 2013 Bond Program.

**CHARLOTTE-MECKLENBURG BOARD OF EDUCATION**  
**2017 BOND SERIES-CAPITAL IMPROVEMENT PROGRAM**  
**BUDGET STATUS REPORT**

	Original Project Budget	Current Project Budget	Committed Amount	Approved Change Orders	Total Committed	Pending Commitments	To Be Committed	Prev Paid To Date	Paid To Date	Balance To Complete	Monthly Expenditure
	(A)	(B)	(C)	(D)	(E)=(C+D)	(F)	(G)=(B-E-F)	(H)	(I)	(J)=(B-I)	(K)=(I-H)
<b><u>A. REPLACEMENT &amp; RENOVATIONS</u></b>											
1 Briarwood Elementary *	\$29,091,619	\$31,962,730	\$4,975,067	\$26,609,642	\$31,584,709	\$172,381	\$205,640	\$27,824,347	\$28,458,390	\$3,504,340	\$634,043
2 Bruns Academy Replacement	\$34,207,808	\$39,784,927	\$3,388,024	\$218,050	\$3,606,074	\$0	\$36,178,853	\$0	\$0	\$39,784,927	\$0
3 Career & Technology Education Upgrades	\$10,101,734	\$10,159,765	\$2,333,694	\$4,099,152	\$6,432,846	\$77,334	\$3,649,585	\$3,630,431	\$3,988,167	\$6,171,598	\$357,736
4 Collinswood K-8 *	\$44,172,540	\$41,547,540	\$5,014,769	\$36,476,435	\$41,491,204	\$0	\$56,336	\$41,384,602	\$41,384,602	\$162,938	\$0
5 East Mecklenburg HS	\$12,771,594	\$15,058,594	\$1,942,570	\$11,825,297	\$13,767,867	(\$4,960)	\$1,295,686	\$5,396,424	\$6,177,877	\$8,880,717	\$781,452
6 Garinger HS	\$13,936,979	\$5,986,979	\$1,491,071	\$3,481,009	\$4,972,080	\$6,518	\$1,008,381	\$1,064,499	\$1,559,327	\$4,427,652	\$494,828
7 Harding University High *	\$18,330,263	\$13,805,263	\$2,051,258	\$11,722,683	\$13,773,942	\$0	\$31,321	\$13,658,441	\$13,658,441	\$146,822	\$0
8 Charlotte-Mecklenburg Academy (FKA -EC Specialty	\$18,957,960	\$17,699,220	\$2,175,504	\$15,523,717	\$17,699,220	\$0	\$0	\$17,699,220	\$17,699,220	\$0	\$0
9 Lansdowne Elementary	\$29,391,270	\$35,378,834	\$4,500,040	\$29,452,186	\$33,952,226	\$29,250	\$1,397,358	\$16,454,060	\$18,178,881	\$17,199,953	\$1,724,821
10 Lincoln Heights Elementary	\$3,740,478	\$4,588,675	\$577,649	\$26,774	\$604,423	\$0	\$3,984,252	\$383,738	\$383,738	\$4,204,937	\$0
11 Montclair Elementary Replacement *	\$28,559,390	\$28,559,390	\$2,426,903	\$25,949,027	\$28,375,930	\$0	\$183,460	\$28,106,282	\$28,116,709	\$442,681	\$10,427
12 Mountain Island k-8	\$9,218,439	\$10,488,400	\$1,174,291	\$6,930	\$1,181,221	\$9,500	\$9,297,679	\$270,826	\$339,038	\$10,149,362	\$68,213
13 Northwest School of the Arts	\$17,632,202	\$20,467,000	\$909,496	\$117,644	\$1,027,140	\$0	\$19,439,860	\$0	\$0	\$20,467,000	\$0
14 Shamrock Gardens Elementary *	\$29,890,351	\$32,358,351	\$4,050,545	\$27,138,983	\$31,189,528	\$30,012	\$1,138,811	\$15,756,605	\$17,326,505	\$15,031,846	\$1,569,900
15 Sharon Elementary	\$7,706,528	\$9,475,862	\$1,443,456	\$7,666,919	\$9,110,375	\$27,000	\$338,487	\$8,584,686	\$8,663,068	\$812,794	\$78,382
16 South Mecklenburg HS	\$13,352,143	\$15,622,927	\$554,586	\$94,238	\$648,824	\$0	\$14,974,103	\$2,834	\$2,834	\$15,620,093	\$0
17 E.E. Waddell Magnet HS	\$4,571,709	\$5,137,367	\$347,531	\$0	\$347,531	\$0	\$4,789,836	\$92,952	\$98,364	\$5,039,003	\$5,412
18 West Charlotte HS Replacement	\$109,977,166	\$109,977,166	\$12,660,316	\$91,018,917	\$103,679,233	\$179,928	\$6,118,005	\$63,591,573	\$66,140,919	\$43,836,247	\$2,549,346
19 West Mecklenburg HS	\$11,065,440	\$10,850,902	\$1,661,384	\$8,638,380	\$10,299,764	\$0	\$551,138	\$9,073,287	\$9,093,762	\$1,757,140	\$20,475
20 John Taylor Williams	\$13,964,339	\$15,732,600	\$1,878,900	\$21,670	\$1,900,570	\$0	\$13,832,030	\$233,283	\$307,509	\$15,425,091	\$74,226
<b>Total Replacement &amp; Renovations</b>	<b>\$460,639,952</b>	<b>\$474,642,492</b>	<b>\$55,557,054</b>	<b>\$300,087,654</b>	<b>\$355,644,707</b>	<b>\$526,963</b>	<b>\$118,470,821</b>	<b>\$253,208,091</b>	<b>\$261,577,351</b>	<b>\$213,065,141</b>	<b>\$8,369,261</b>
<b><u>B. RESPONSE TO ENROLLMENT GROWTH</u></b>											
1 South Academy of International Languages	\$45,359,367	\$41,959,367	\$6,025,508	\$35,673,741	\$41,699,249	\$0	\$260,119	\$40,030,579	\$40,303,822	\$1,655,545	\$273,242
2 North Academy of World Languages (FKA - New K-8	\$45,359,367	\$42,359,367	\$6,022,839	\$35,999,788	\$42,022,628	\$0	\$336,739	\$41,321,726	\$41,606,831	\$752,536	\$285,105
3 South Pine Academy (FKA - New ES Nations Ford, S	\$29,173,829	\$31,272,550	\$6,804,363	\$24,425,881	\$31,230,244	\$2,450	\$39,855	\$27,532,145	\$29,975,946	\$1,296,603	\$2,443,802
4 New Elementary School - Bain/Lebanon Relief	\$29,988,332	\$30,455,951	\$3,786,181	\$26,539,941	\$30,326,122	\$46,786	\$83,043	\$9,301,085	\$11,416,743	\$19,039,208	\$2,115,658
5 New Elementary School - Windsor Park Relief *	\$30,422,230	\$42,697,022	\$4,704,239	\$267,054	\$4,971,293	\$5,182,210	\$32,543,519	\$2,024,955	\$2,332,687	\$40,364,335	\$307,732
6 New Elementary School - Elon/Hawk Ridge Relief *	\$30,426,712	\$50,856,962	\$14,004,441	\$5,321,133	\$19,325,574	\$0	\$31,531,387	\$11,809,758	\$11,843,268	\$39,013,694	\$33,510
7 New Elementary School - Hidden Valley Relief	\$30,518,345	\$40,197,022	\$4,139,586	\$5,867,040	\$10,006,626	\$0	\$30,190,396	\$1,876,896	\$2,018,204	\$38,178,818	\$141,308
8 New High School - Olympic Relief	\$109,908,793	\$109,908,793	\$12,160,356	\$97,468,138	\$109,628,495	\$220,021	\$60,277	\$72,238,682	\$75,702,978	\$34,205,815	\$3,464,296
9 New High School - South Meck/Ardrey Kell Relief *	\$110,287,621	\$154,930,460	\$11,736,353	\$787,664	\$12,524,017	\$69,350	\$142,337,093	\$4,191,281	\$4,386,357	\$150,544,103	\$195,075
<b>Total Response to Enrollment Growth</b>	<b>\$461,444,596</b>	<b>\$544,637,493</b>	<b>\$69,383,867</b>	<b>\$232,350,381</b>	<b>\$301,734,248</b>	<b>\$5,520,817</b>	<b>\$237,382,429</b>	<b>\$210,327,107</b>	<b>\$219,586,835</b>	<b>\$325,050,658</b>	<b>\$9,259,729</b>
<b><u>C. CONTINGENCY</u></b>											
	\$0	\$0	\$0	\$0	\$0	\$0	\$0	\$0	\$0	\$0	\$0
<b>Total Contingency</b>	<b>\$0</b>	<b>\$0</b>	<b>\$0</b>	<b>\$0</b>	<b>\$0</b>	<b>\$0</b>	<b>\$0</b>	<b>\$0</b>	<b>\$0</b>	<b>\$0</b>	<b>\$0</b>

**CHARLOTTE-MECKLENBURG BOARD OF EDUCATION**  
**2017 BOND SERIES-CAPITAL IMPROVEMENT PROGRAM**  
**BUDGET STATUS REPORT**

	Original Project Budget	Current Project Budget	Committed Amount	Approved Change Orders	Total Committed	Pending Commitments	To Be Committed	Prev Paid To Date	Paid To Date	Balance To Complete	Monthly Expenditure
	(A)	(B)	(C)	(D)	(E)=C+D	(F)	(G)=(B-E-F)	(H)	(I)	(J)=(B-I)	(K)=(I-H)
<b>TOTAL LOCAL BOND PROGRAM</b>	<b>\$922,084,548</b>	<b>\$1,019,279,985</b>	<b>\$124,940,921</b>	<b>\$532,438,034</b>	<b>\$657,378,955</b>	<b>\$6,047,781</b>	<b>\$355,853,250</b>	<b>\$463,535,197</b>	<b>\$481,164,187</b>	<b>\$538,115,799</b>	<b>\$17,628,989</b>

Original project estimated costs approved by the Board Of Education on July 25, 2017 approved by the voters of Mecklenburg County on November 7, 2017.

\*Project included in \$33.2M early funding approved by Board Of Education on August 9, 2016 and Mecklenburg Board of County Commissioners on September 6, 2016. On February 19, 2019 an additional \$8M was approved for New Elementary School - Elon/Hawk Ridge Relief site.

\*Current Budget includes an additional \$89.2M to fund increase land and construction costs. The additional funds were approved by the Board of County Commissioners on June 16, 2020.

**Charlotte-Mecklenburg Board of Education**  
**Approved Construction or Repair Change Orders\***  
**Reporting Period: December 2021**

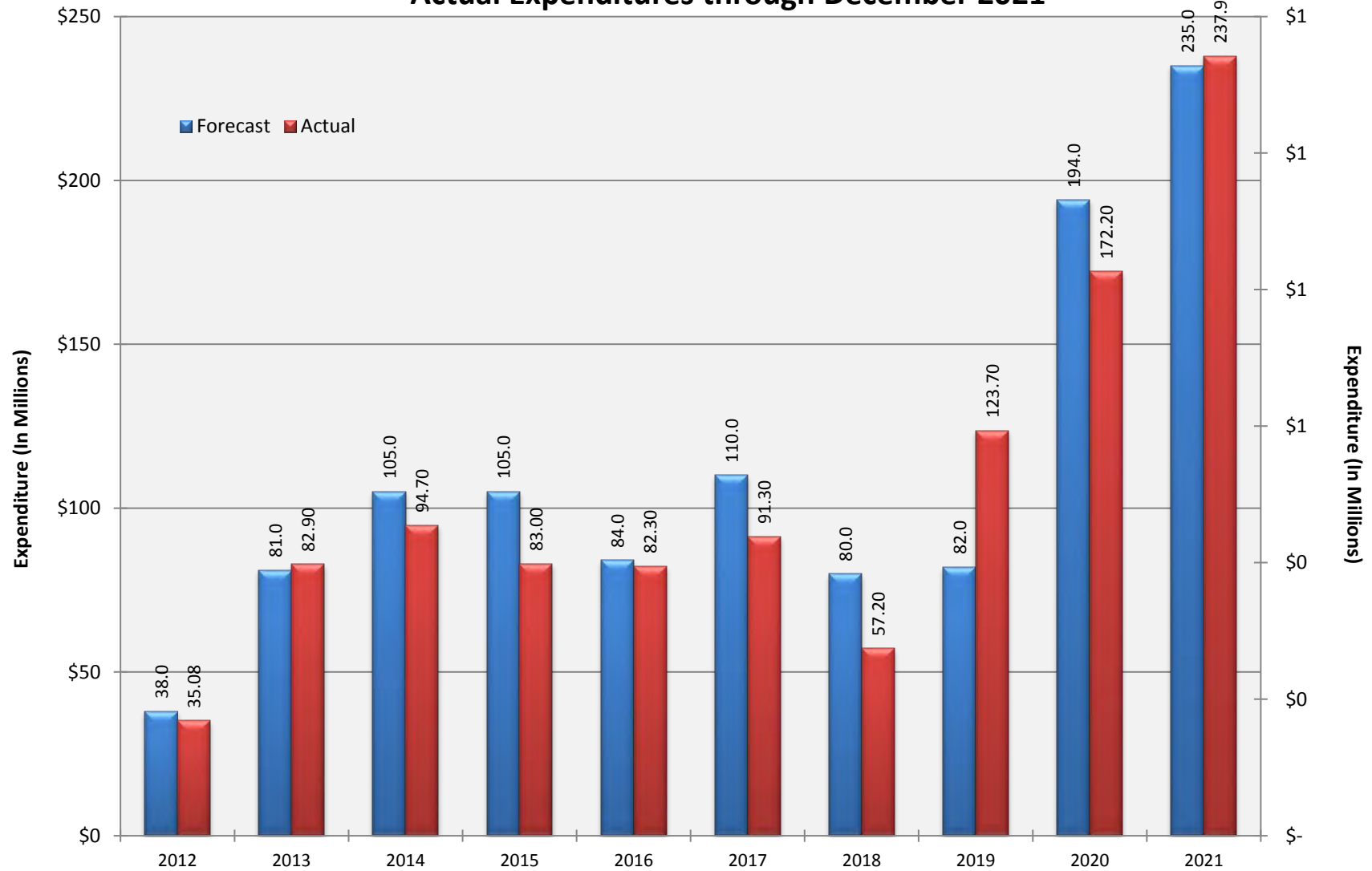
<b>Funding Source</b>	<b>Project Name</b>	<b>Contractor</b>	<b>Description</b>	<b>Change Order Amount</b>	<b>Revised Contract Value</b>
	<b>None this reporting period</b>				

\* Not previously presented to the Board of Education for Approval (less than \$90,000)



# 10 YEAR EXPENDITURE SUMMARY

**Forecast Expenditure versus  
Actual Expenditures through December 2021**



# GLOSSARY

# Glossary

---

- **Project Management** – This section includes updates from our project managers and describes the currently active construction projects. This includes from Board of Education award thru final completion.
- **Design and Bidding** – This section contains updates from our design managers on the projects currently in the design phase. This phase from design award to Board of Education award of construction.
- **Controls** – Section includes misc. updates from controls group including expenditures, related Board of Education awards during the reporting period, cash flow information. This section covers all projects from approved bond through final expenditures and bond close with the county.
- **MWSBE** – Contains updates from the MWSBE Director and team, including current activity and summaries of the participation by MWSBE providers on our program.
- **Bond Progress Summary** – Provides a summary of bond financials including bond value, committed/pending amounts, paid to date, expended this month.
- **Project Procurement Dates** - Next 90 Days major project bid activity.
- **Mobile Swing Space Utilization** – Includes a summary of program related swing space currently in use and the schedule of use.
- **Bond Summary Schedule** – Current program summary schedule including planned design, construction and FF&E. These activities are fed from detailed schedules and are fine-tuned as project information is available.
- **Project Contractor Teams**; Provides summary of turnover dates for completed/closed projects since 2010 including architects/designers and contractors.
- **School Site Location Maps** – General location of bond projects (2017) by type.
- **Project Status Report** – This section of the report provides a summary of the bond project scope, current estimate (all sources), planned occupancy/actual occupancy date. It also provides a current status of the design phase, construction progress and a brief update. The report currently includes 2013 and 2017 bond projects that have or will be completed after to August 2016.
- **MWSBE Participation Report** – The MWSBE report provides a summary of the participation on the 2013 & 2017 Bond funded projects.
- **Project Progress Photos** – Includes photos of active construction projects.
- **Budget Summary Reports** – These reports are by funding source and summarize financial activity to date on the projects. This includes original and current project estimates, committed values, amounts paid to date, balances and monthly expenditures.
- **Change Orders < \$90,000** – This month's approved construction or repair change orders < \$90,000.
- **Expenditure Summary** – Provides a summary of Bond Expenditures by calendar year.