

Capital Improvement Program

Monthly Bond Report August 2022



New High School Ardrey Kell, South Mecklenburg Relief



CAPITAL PROGRAM SERVICES Capital Improvement Program

AUGUST 2022 **MONTHLY BOND REPORT**

PROGRAM OVERVIEW

- Project Management
- Design and Bidding
- Controls
- MWSBE
- Bond Progress Summary
- Project Procurement - Next 90 Days
- Swing Space Utilization
- Bond Summary Schedule
- Project Contractor Teams; Projects in Design/Construction and Substantially Completed/Closed
- School Site Location Maps
 - Elementary Schools
 - Middle Schools
 - High Schools & Specialty Schools

PROJECT STATUS REPORT

MWSBE PARTICIPATION REPORT

PROJECT PROGRESS PHOTOS

PROJECT CONTROLS

- Budget Summary Reports
 - 2013 Bond Series
 - 2017 Bond Series
- Change Orders < \$90,000
- Expenditure Summary

GLOSSARY

PROGRAM OVERVIEW

PROJECT MANAGEMENT

The following is a summary of the activity on the bond funded projects in construction during the month of August.

The **East Mecklenburg High School** new classroom building was occupied in August. The project is now in the closeout phase.

The contractor for **E.E. Waddell** continues with the phased construction renovations. The media center and maker space renovations were completed and occupied in August. The 200 and 500 classroom wings are currently being renovated. The school's classroom lighting is being upgraded with LED fixtures, and unit ventilators are being repaired and or replaced. The project is scheduled for completion January 2023.

The **Garinger Addition and Renovation** construction manager progressed well in the month of August. The school occupied the CTE building and completed preparations for use. FF&E removed the remaining school content from the 300 Building allowing the selective demolition to continue. The MEP trades began the above ceiling installations and the plumber began installations below grade. The 300 Building renovations are scheduled to complete January 2023.

The construction manager for **JT Williams Secondary Montessori** has completed the staff/student lot paving. Work around the site perimeter continues as the new fire line is installed. Storm water piping and inlets have been installed at the classroom courtyard. The 100 Building interior renovations including new student group bathrooms are progressing. A 10-classroom modular is also being placed on site to provide swing space while renovations in the 200 Building take place and provide future classroom space.

The **Lansdowne Elementary School** construction manager achieved substantial completion and school staff and students moved into the new building. The trade contractors are completing punch list items after school hours. Demolition and remaining site work has started and will be completed in 2023.

The **Mint Hill Elementary School** (*fka Bain, Lebanon, Piney Grove Relief*) construction manager achieved substantial completion and staff and students moved into the new building. The project has moved into the closeout phase and the trade contractors are completing punch list items. The new signal at the entrance to the schools is currently scheduled to occur first quarter 2023.

The **Mountain Island Lake Academy Gym/Classroom Addition** construction manager completed the removal and replacement of unsuitable soils within the building pad has started installing the footings for the new building. The temporary staff/visitors lot binder base was installed along with temporary striping to establish the parking and queuing line. The landscaper completed the installation of the play field irrigation to allow the sod installations to begin. The four-classroom and gym addition are scheduled for occupancy August 2023.

The **New Elementary School (Elon, Hawk Ridge, Polo Relief)** construction manager continued with grading operations. Foundations and other permittable work will commence once permits are approved and received from the authorities having jurisdiction. The Park and Recreation Center bid and board approval is scheduled in September. The new 45-classroom elementary school will be located across from the Ardrey Kell High School and is currently scheduled for occupancy August 2023.

The **New Elementary School (Hidden Valley, JW Grier, Newell Relief)** construction manager is nearing completion of the building footings. Most of the floor slabs have been poured and the two-story classroom wing structural steel is ongoing. The architect has reviewed the masonry sample panels and approved the brick veneer colors. The underground site storm water piping continues. The construction team continues to work through supply

chain material deliveries that includes electrical switch gear, roofing materials and storm water piping. This new 45-classroom school will be located next to Northridge Middle School and is scheduled for occupancy August 2023.

The **New Elementary School (Windsor Park, Winterfield, Idlewild Relief)** construction manager continues site grading. A section of the classroom building is on grade allowing some footings to progress. There are Duke Power underground primary lines feeding the adjacent property owners that will need to be relocated requiring executed easements. Getting these documents finalized and the lines relocated is holding up the completion of the remaining site work and potentially impacting the construction completion date. The site contractor has been able to set the stone for the new bus lot including the curb and gutter. The site contractor continues to monitor and maintain the perimeter erosion control. This new 45-classroom school is currently scheduled for occupancy August 2023.

The **New High School (South, Ardrey Relief)** construction manager continued with blasting operations working their way around the site. Site utilities continued in available areas. Foundations and other permittable work will commence once permits are approved and received from the authorities having jurisdiction. Work continued on the British School field in preparation for a timely turn over. The new 100-classroom relief high school is scheduled for occupancy August 2024.

The **Palisades High School** (*fka New High School Olympic Relief*) has been occupied by staff and students. The construction manager is in the closeout phase and is working with trade contractors to complete punch list and open issues.

The **Shamrock Gardens Elementary School** has been occupied by staff and students. The construction manager continues completing punch list items and final closeout documents.

The new **West Charlotte High School** facility has been occupied by staff and students. The construction manager is now working with trade contractors to complete punch list and open issues. The temporary staff parking lot is paved and is being used. The demolition of existing buildings is underway. The team continues to coordinate the next phase of the project with school administration. The demolition and site work phase is scheduled for completion in August 2023.

DESIGN AND BIDDING

The following is a summary of the activity on the bond funded projects in design and bidding phase during the month of August.

The **Bruns Avenue Elementary Replacement** project completed the review of design development submittal and comments have been returned to the architect for review and incorporation. Discussions continue with CDOT regarding the traffic memorandum scope. This new 45-classroom school facility will incorporate a full-size gym and associated areas in coordination with Charlotte-Mecklenburg Parks & Recreation. The school is scheduled to start construction in the first quarter of 2023 and is scheduled to be occupied August 2024.

The **Lincoln Heights Elementary** project received bids in preparation for BOE approval in September. The renovation/modifications to the building will be phased. The first phase is scheduled to start construction in January 2023 and be completed in the summer 2023.

The **Northwest School of the Arts Additions** project continues to progress in the overall planning strategy of the campus before proceeding further in the schematic design phase. Further investigations are necessary on the building programing and civil improvements before progressing. Current scope includes a classroom building that replaces the existing visual arts classroom building.

The **South Mecklenburg High School Addition** project architect completed the schematic design phase. The design project has progressed into the design development phase. Collaboration with the school's administration, JROTC Program Staff and CTE Department continue to interact. Design scope includes a 2-story classroom building addition with 19 classrooms.

CONTROLS

Expenditures for the month of August were \$17.4M. This brings our fiscal year to date total to \$33.3M against the 2023 fiscal year cash flow projection of \$230M. The Controls team has begun the review of completed purchase order for projects recently turned over. Additionally, the Controls team continues the reconciliation and closeout of completed 2013 and 2017 bond projects. Available funding identified from completed purchase orders review and reconciliations are being accumulated to be used for future capital needs.

The Controls team continues to submit notices of potential changes at school sites so senior staff can adequately evaluate any issues. Additionally, the Controls team continues the processing of contracts, invoices, preparing notices of potential change, change orders, pay applications and check requests for projects under construction. Captured construction cost data is used to prepare financial reports such as detailed cost reports, budget summaries, reconciliation to CMS books, revisions to and updated cash flows and complete special financial requests by CMS and Mecklenburg County. This process, along with data compilation and management, allows senior staff to provide the proper guidance/direction and accurate information to the program stakeholders.

No Bond related consent items were submitted for Board of Education approval during the month of August.

MWSBE

As of August 2022, the overall MWSBE utilization percentage related to design and construction of the 2017 bond projects is 43.44% which includes 18.76% participation by minority contractors, 23.51% by women contractors and 1.17% participation by small business contractors. This accounts for more than \$359 million of utilization by Minority, Women and Small Business Contractors.

The Diversity & Inclusion Office of Charlotte-Mecklenburg Schools continued to conduct several individual virtual orientations with new MWSBE contractors and prime contractors. In addition, team members also attended/hosted the following outreach sessions/pre-bid meetings and/or workforce development opportunities:

Outreach Sessions:

- NC MWBE Coordinators Network Quarterly Meeting
- Carolinas-Virginia Minority Supplier Development Council Business Opportunity Conference
- NC Veterans Procurement Summit
- Hispanic Contractors Association of the Carolinas Brilliance Awards
- American Contract Compliance Association National Training Institute
- Charlotte MED Week Planning Meeting

Commendations:

- Congratulations to the following Hispanic Contractors Association of the Carolinas Brilliance Award Honorees: NJR Construction – Trade Contractor of the Year; Atlas Site Tech – Subcontractor of the Year; SunSouth Carolinas, Inc. – Residential Contractor of the Year; Dimension Building Specialist, LLC – Safety Champion of the Year; Pinam Construction, General Contractor of the Year; DB&B Consulting – Partner of

the Year; and Carla Daniels of Wake Tech Community College – Advocate of the Year. Award winners were selected for overall growth and impact on the business community.

Over the next month, team members will continue to work with contractors interested in bidding on the upcoming school projects utilizing various virtual tools to communicate. Contractors are encouraged to review bid advertisements in Charlotte Observer and register as a vendor on the North Carolina Interactive Purchasing System for notification of the various opportunities.

BOND PROGRESS SUMMARY As of August 2022

Funding Source and Value		Amount Committed/Pending	Amount Paid to Date	Amount Expended This Period
2013 Bond	\$316,067,527	\$314,835,158	\$311,489,304	\$309,480
2017 Bond	\$1,019,279,985	\$903,720,580	\$598,386,635	\$17,076,847
Grand Total	\$1,335,347,512	\$1,218,555,738	\$909,875,939	\$17,386,327

UPCOMING MAJOR CONSTRUCTION PROCUREMENT DATES *Three Month Look Ahead*

School Name

Bid Dates*

Bruns Academy – Early Procurement
Managed by Edifice

September 2022

** NOTE: Work In Progress...Dates Subject to Change.*

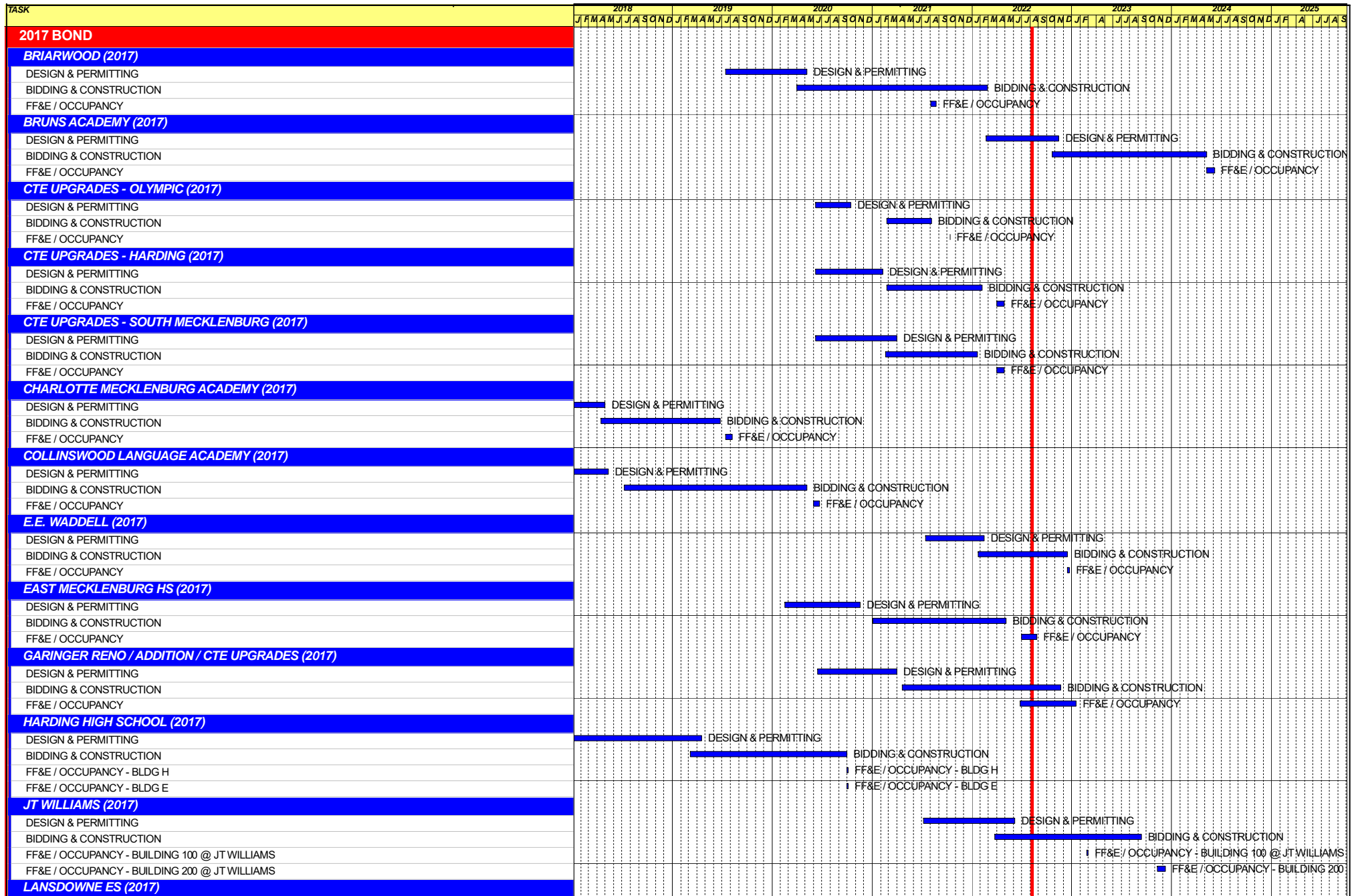
SWING SPACE UTILIZATION

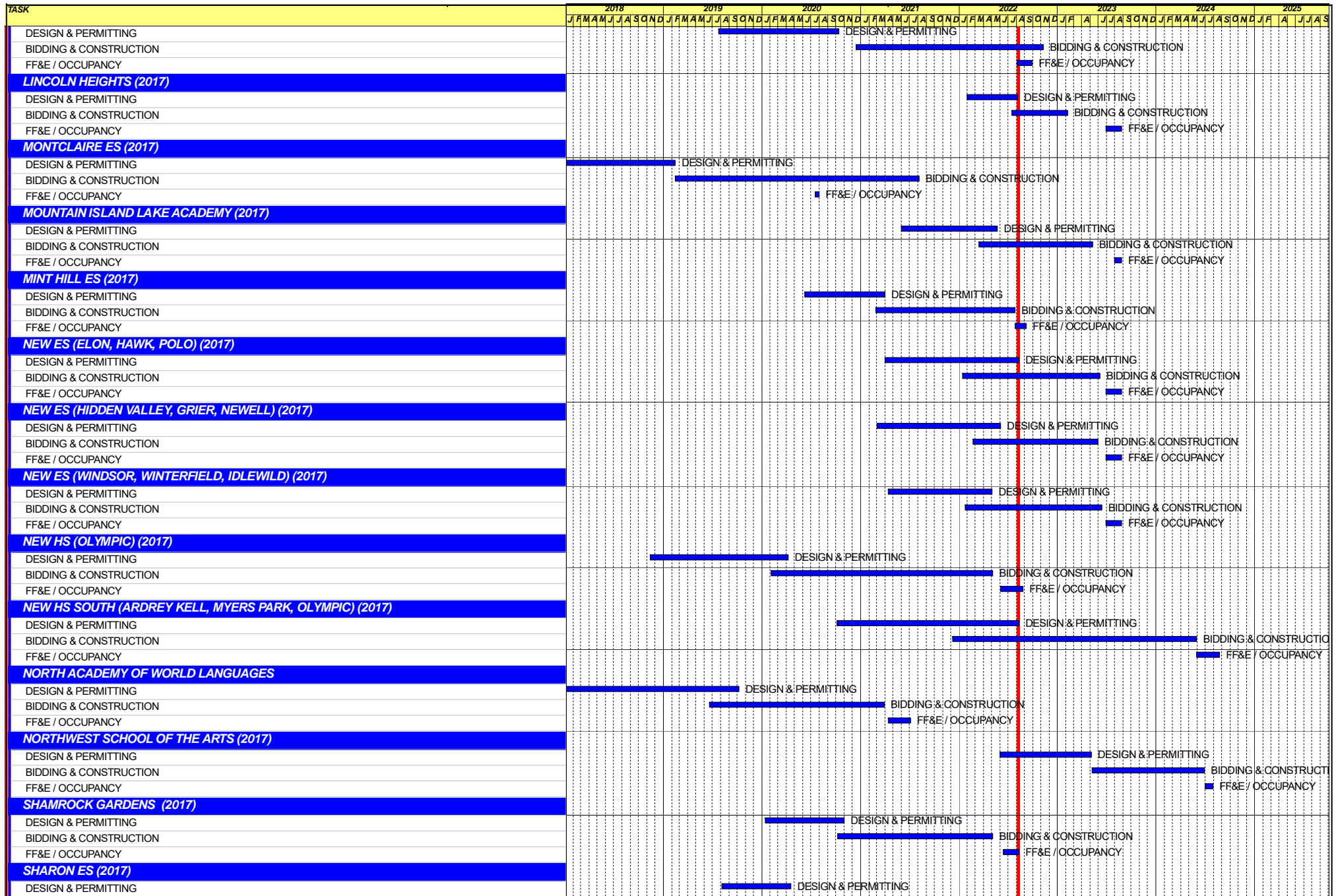
Creating a temporary space for students and staff to occupy during construction on a school’s campus has proven to be beneficial to the project’s schedule and cost and overall safety and efficiency of school operations. When the renovation or expansion of a facility is performed and the facility must remain functionally operational, there are benefits to the owner in using swing space.

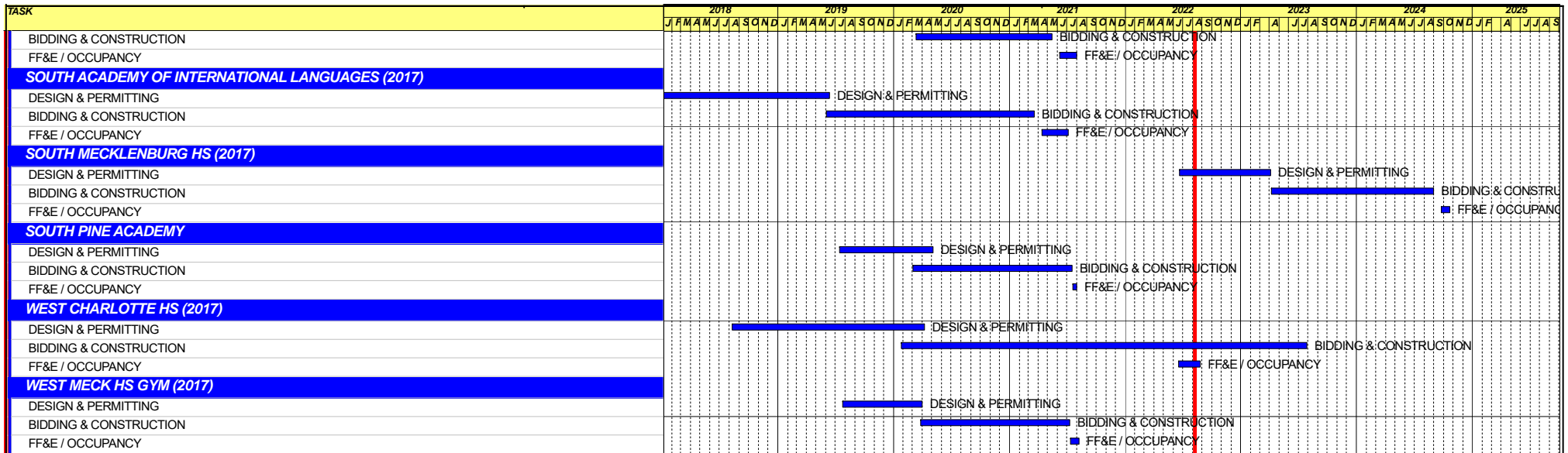
We have successfully utilized both onsite and offsite swings. The most desirable swings are “offsite” ones. Onsite swing using mobiles or modulars, likewise has been successfully used. The following is a summary of current swing options planned or in use.

<u>School</u>	<u>No. of Mobiles/Relocation Site</u>	<u>Status (From – To)</u>
---------------	---------------------------------------	---------------------------

None at this time		
-------------------	--	--







Capital Improvements Program

Projects in Design or Under Construction

School	Architect	General Contractor/CM
Projects In Design		
Lincoln Heights Repurpose (17)	Neighboring Concepts	Randolph & Sons
New Bruns Avenue ES (17)	ADW	Edifice, Inc.
Northwest School of the Arts Addition (17)	LS3P	Balfour Beatty
South Mecklenburg High School Addition (17)	Morris Berg	Balfour Beatty
Projects in Bid/Award/Construction Phase		
E.E. Waddell (17)	Moseley	Randolph & Sons
Garinger Addition/Renovation & CTE (17)	LS3P	Balfour Beatty
J.T. Williams (17)	FWA	New Atlantic
Lansdowne Elementary School Replacement (17)	Perkins Eastman	Edifice, Inc.
Mountain Island School (17)	ADW	Whiting-Turner
New ES (Elon,Hawk Ridge, Polo Ridge) (17)	Little Diversified	Balfour Beatty
New ES (Hidden Valley, JW Grier, Newell) (17)	ADW	Edifice, Inc.
New ES (Windsor, Winterfield, Idlewild) (17)	Neighboring Concepts	Rodgers-Holt Brothers
New HS (South, Ardrey) (17)	Ratio	Messer
West Charlotte High School (17)	LS3P	Rodgers-Holt Brothers

Capital Improvements Program
Projects Substantially Completed/Closed *

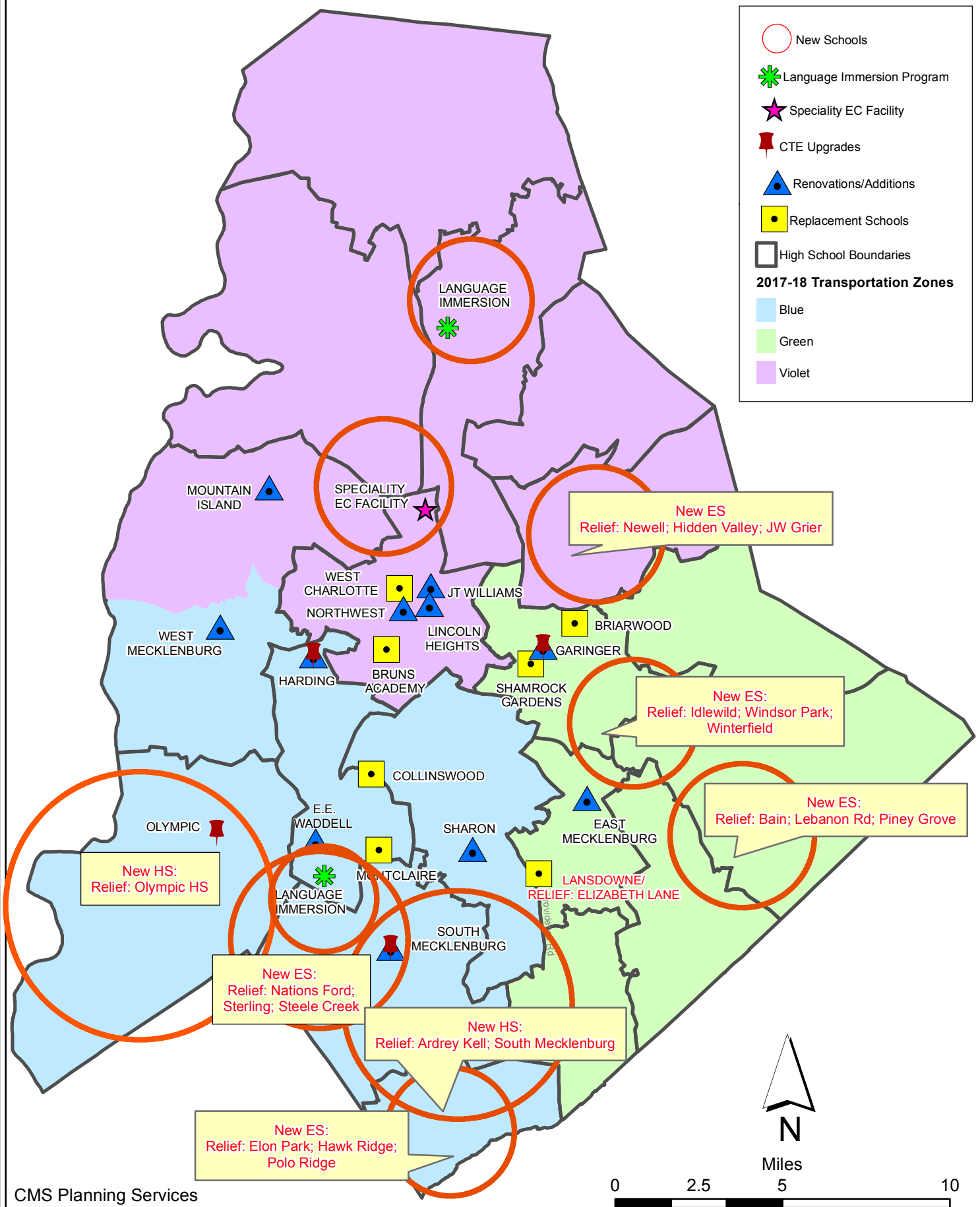
School	Turnover Year	Architect	General Contractor
Palisades High School (Olympic Relief) (17)	Aug-22	Little Diversified	Edifice, Inc.
Shamrock Gardens Elementary School Replacement (17)	Aug-22	Little Diversified	Rodgers/Holt Brothers
Mint Hill ES (17) <i>(fka Bain, Lebanon Rd, Piney Grove)</i>	Aug-22	FWA	Metcon
East Mecklenburg High School (17)	May-22	Morris Berg	Turner Construction
CTE (Harding, Olympic, South) (17)	Jan-22	MPS	Branch Brownstone
Briarwood Elementary School Replacement (17)	Aug-21	ADW	New Atlantic Contracting
Montclair Elementary School (17)	Aug-21	WHN	Messer Construction
North Academy of World Languages (17)	Aug-21	ADW	New Atlantic Contracting
Sharon Elementary School (17)	Aug-21	Clark Nexsen	Samet
South Academy of International Languages (17)	Aug-21	FWA	Messer Construction
South Pine Academy (17)	Aug-21	FWA	Metcon
West Mecklenburg Gym (17)	Aug-21	Moseley	Barnhill/D.A. Everett
Collinswood Language Academy (17)	Aug-20	Perkins Eastman	Turner Construction
Harding High School Renovation (17)	Aug-20	SFLA	Barnhill Contracting
Rea Farms STEAM Academy (13)	Aug-20	Little Diversified	Balfour Beatty
Ashley Park K-8 Conversion (13)	Aug-19	ADW	Turner Construction
Druid Hills K-8 Conversion (13)	Aug-19	ADW	Edifice, Inc.
Selwyn Elementary (13)	Aug-19	Clark Nexsen	Balfour Beatty
Charlotte Mecklenburg Academy (17)	Aug-19	KSQ	Edifice, Inc.
Davidson K-8 (13)	Aug-19	Little Diversified	Gilbane
CTE - North Mecklenburg High (13)	Aug-19	LS3P	Shiel Sexton
CTE - Garinger (13)	Mar-19	LS3P	Hostetter & Son
CTE - Independence (13)	Mar-19	LS3P	D.E. Brown
CTE - West Mecklenburg (13)	Mar-19	LS3P	Hostetter & Son
Charlotte East Language Academy (13)	Aug-18	Morris Berg	Edifice, Inc
Myers Park High School Phase 3 (13)	Aug-18	Boomerang Design	BE&K
Northridge Middle (13)	Aug-18	Morris Berg	Barnhill Contracting
Myers Park High Bldg 2 (13)	Feb-18	Boomerang Design	BE&K
East Mecklenburg High Addition (13)	Jan-18	Bergman (fna Gantt Huberman)	Edifice, Inc.
J.M. Alexander Middle (13)	Aug-17	FWA Group	Balfour Beatty
Northwest School of the Arts Renovation (13)	Aug-17	Moseley	Turner Construction
Renaissance West STEAM Academy (13)	Aug-17	Little Diversified	Rodgers Construction
South Mecklenburg High Addition (13)	Jul-17	SFLA	Barnhill Contracting
Myers Park High Bldg 1 (13)	Sep-16	Boomerang	KBR
Statesville Road Elementary (13)	Aug-16	ADW	JE Dunn
Nations Ford Elementary (13)	Aug-16	Wash Hatem Nelson	Messer Construction
Olympic High Addition (13)	Aug-16	McMillan, Pazdan, Smith	Turner Construction
Lawrence Orr Elementary (07)	Aug-15	Cort Architectural Group	DH Griffin/Metcon
Parkside Elementary (07)	Aug-15	Wash Hatem Nelson	Clancy & Theys
Hawthorne High Renovations (07)	Aug-15	Morris-Berg	Balfour Beatty
Newell Elementary (07)	Aug-15	Perkins Eastman	New Atlantic Contracting
Ranson Middle (07)	Aug-15	Morris-Berg	Edifice, Inc.
Vance High	Jan-15	LS3P	Matthews Construction Co., Inc.
Garinger High - Renovations/Addition	Aug-14	Adams Group Architects	Turner Construction
Olympic High - Stadium	Aug-14	Site Solutions	Turner Construction
West Mecklenburg High - Stadium	Aug-14	Site Solutions	Turner Construction
Collinswood - Indoor Air Quality	Aug-14	PEA	The Bowers Group
Lansdowne - Indoor Air Quality	Aug-14	AeroRaq	Tyler 2
McKee Road - Indoor Air Quality	Aug-14	McCracken & Lopez	Godfrey Construction
Garinger High - Track & Field	Jul-14	Site Solutions	Turner Construction
Independence High - Gym	Jun-14	Shook Kelly	Shelco, Inc. (CM)
Palisades Park Elementary	May-14	Wash Hatem Nelson	Clancy & Theys

Capital Improvements Program
Projects Substantially Completed/Closed *

School	Turnover Year	Architect	General Contractor
East Mecklenburg High Auditorium	Jan-14	Gantt Huberman Associates	Godfrey Construction Co., Inc.

Projects closed prior to 2014 are not shown

CMS Capital Improvement Plan 2017 Bond Projects



PROJECT STATUS REPORT



Monthly Project Status 2017 Bond Summary August 2022

Project	Current Project Estimate	Project Scope	** Occupy On	Design Phase	Construction Progress	Project Status
Briarwood Elementary School (17)	\$ 31,762,730	45-classroom replacement facility; replaces school built in 1956.	August 2021	Complete	100 %	The construction manager is finalizing closeout and the return of the Park and Recreation land used during construction.
Bruns Academy (17)	\$ 43,284,927	New 45-classroom elementary school (K-5); replaces old school built in 1969.	August 2024	Design Development	0 %	The Bruns Avenue Elementary Replacement project received the design development submittal and is in the review process. Discussions continue with CDOT regarding the traffic memorandum study and scope. Collaboration with Parks & Recreation continue to progress. This new 45-classroom school facility is being designed with a full-size gym and associated areas in coordination with Charlotte-Mecklenburg Parks & Recreation.
Career and Technology Education (17)	\$ 10,159,765	Phase I CTE upgrades at Olympic, Harding, Garinger and South Mecklenburg.	January 2022	Complete	99 %	The CTE projects at Harding and South Mecklenburg have completed the construction renovations.
Charlotte-Mecklenburg Academy (17)	\$ 17,699,220	New EC school located on the old Statesville Elementary School site.	August 2019	Complete	100 %	Project is complete.
Collinswood Language Academy (17)	\$ 41,422,560	New 63-classroom K-8 facility on the site of the Smith Family Center.	August 2020	Complete	100 %	Project is complete.
E.E. Waddell (17)	\$ 5,137,367	Repurpose current E.E. Waddell to reopen as a magnet high school.	August 2023	Complete	40 %	The contractor for E.E. Waddell continues with the phased construction renovations. The media center and maker space renovations were completed and occupied in August. The 200 and 500 classroom wings are currently being renovated. The school's classroom lighting is being upgraded with LED fixtures, and unit ventilators are being repaired and or replaced.

Monthly Project Status

2017 Bond Summary

August 2022

Project	Current Project Estimate	Project Scope	** Occupy On	Design Phase	Construction Progress	Project Status
East Mecklenburg High School (17)	\$ 10,405,411	This project will provide for the design, and construction of a new 30 classroom building.	August 2022	Complete	99 %	The East Mecklenburg High School new classroom building was occupied in August. The project is now in the closeout phase.
Garinger High School (17)	\$ 5,986,979	Project includes the design and construction for renovations of 300 building and a new 16 classroom building.	January 2023	Complete	73 %	The Garinger Addition and Renovation construction manager progressed well in the month of August. The school occupied the CTE building and completed preparations for use. FF&E removed the remaining school content from the 300 Building allowing the selective demolition to continue. The MEP trades began the above ceiling installations and the plumber began installations below grade.
Harding High School (17)	\$ 13,747,878	Renovation of the kitchen, cafeteria, existing gym (aux) and the addition of a new gym.	August 2020	Complete	100 %	Project is complete.
JT Williams (17)	\$ 17,432,600	Project includes building renovations to J.T. Williams Montessori magnet.	August 2024	Complete	11 %	The construction manager for JT Williams Secondary Montessori has completed the staff/student lot paving. Work around the site perimeter continues as the new fire line is installed. Storm water piping and inlets have been installed at the classroom courtyard. The 100 Building interior renovations including new student group bathrooms are progressing. A 10-classroom modular is also being placed on site to provide swing space while renovations in the 200 Building take place and provide future classroom space.
Lansdowne Elementary School (17)	\$ 34,078,834	New 45-classroom school; replaces old school built in 1959 and relieve crowding at Elizabeth Lane ES.	August 2022	Complete	90 %	The Lansdowne Elementary School construction manager achieved substantial completion and school staff and students moved into the new building. The trade contractors are completing punch list items after school hours. Demolition and remaining site work has started and will be completed in 2023.
Lincoln Heights Elementary School (17)	\$ 4,588,675	Repurpose and reopen as magnet school.	August 2023	Construction Documents	0 %	The Lincoln Heights Elementary project received bids in preparation for BOE approval in September. The renovation/modifications to the building will be phased.

Monthly Project Status

2017 Bond Summary

August 2022

Project	Current Project Estimate	Project Scope	** Occupy On	Design Phase	Construction Progress	Project Status
Mint Hill Elementary School (17)	\$ 30,455,951	New 45-classroom elementary school; relieves crowding at Bain, Lebanon Road, Piney Grove.	August 2022	Complete	94 %	The Mint Hill Elementary School (fka Bain, Lebanon, Piney Grove Relief) construction manager achieved substantial completion and staff and students moved into the new building. The project has moved into the closeout phase and the trade contractors are completing punch list items. The new signal at the entrance to the schools is currently scheduled to occur first quarter 2023.
Montclair Elementary School (17)	\$ 28,209,390	New 45-classroom replacement facility replacing school built in 1958.	August 2020	Complete	100 %	Project is complete.
Mountain Island Lake Academy (17)	\$ 13,239,686	K-8 Phase 2 - New gymnasium and specialty classrooms.	August 2023	Complete	10 %	The Mountain Island Lake Academy Gym/Classroom Addition construction manager completed the removal and replacement of unsuitable soils within the building pad has started installing the footings for the new building. The temporary staff/visitors lot binder base was installed along with temporary striping to establish the parking and queuing line. The landscaper completed the installation of the play field irrigation to allow the sod installations to begin.
New Elementary School (Elon, Hawk Ridge, Polo Relief) (17)	\$ 58,641,760	New 45-classroom elementary school to relieve Elon, Hawk Ridge, Polo.	August 2023	Complete	7 %	The New Elementary School (Elon, Hawk Ridge, Polo Relief) construction manager continued with grading operations. Foundations and other permittable work will commence once permits are approved and received from the authorities having jurisdiction. The Park and Recreation Center bid and board approval is scheduled in September.
New Elementary School (Hidden Valley, JW Grier, Newell) (17)	\$ 43,579,387	New 45-classroom elementary school; relieves overcrowding at Hidden Valley, J.W. Grier, Newell.	August 2023	Complete	13 %	The New Elementary School (Hidden Valley, JW Grier, Newell Relief) construction manager is nearing completion of the building footings. Most of the floor slabs have been poured and the two-story classroom wing structural steel is ongoing. The architect has reviewed the masonry sample panels and approved the brick veneer colors. The underground site storm water piping continues. The construction team continues to work through supply chain material deliveries that includes electrical switch gear, roofing materials and storm water piping.

Monthly Project Status

2017 Bond Summary

August 2022

Project	Current Project Estimate	Project Scope	** Occupy On	Design Phase	Construction Progress	Project Status
New Elementary School (Windsor, Winterfield, Idlewild Relief) (17)	\$ 45,297,022	New 45-classroom elementary school to relieve Windsor, Winterfield, and Idlewild ES.	August 2023	Complete	6 %	The New Elementary School (Windsor Park, Winterfield, Idlewild Relief) construction manager continues site grading. A section of the classroom building is on grade allowing some footings to progress. There are Duke Power underground primary lines feeding the adjacent property owners that will need to be relocated requiring executed easements. Getting these documents finalized and the lines relocated is holding up the completion of the remaining site work and potentially impacting the construction completion date. The site contractor has been able to set the stone for the new bus lot including the curb and gutter. The site contractor continues to monitor and maintain the perimeter erosion control.
New High School (South, Ardrey) (17)	\$ 158,786,358	New 100 classroom high school to relieve South Mecklenburg, Ardrey Kell and Myers Park HS.	August 2024	Complete	8 %	The New High School (South, Ardrey Relief) construction manager continued with blasting operations working their way around the site. Site utilities continued in available areas. Foundations and other permittable work will commence once permits are approved and received from the authorities having jurisdiction. Work continued on the British School field in preparation for a timely turn over.
North Academy of World Languages (17)	\$ 42,198,909	New 66 classroom K-8 Language Immersion facility located on the old J.M. Alexander Middle School site.	August 2021	Complete	100 %	Project is complete.
Northwest School of the Arts (17)	\$ 20,467,000	Replace classroom building built in 1952 and build classroom addition that supports program.	August 2024	Pre-Schematic	0 %	The Northwest School of the Arts Additions project continues to progress in the overall planning strategy of the campus before proceeding further in the schematic design phase. Further investigations are necessary on the building programing and civil improvements before progressing. Current scope includes a classroom building that replaces the existing visual arts classroom building.

Monthly Project Status

2017 Bond Summary

August 2022

Project	Current Project Estimate	Project Scope	** Occupy On	Design Phase	Construction Progress	Project Status
Palisades High School (17)	\$ 108,908,793	New 100 classroom high school; relieves crowding at Olympic High School.	August 2022	Complete	98 %	The Palisades High School (fka New High School Olympic Relief) has been occupied by staff and students. The construction manager is in the closeout phase and is working with trade contractors to complete punch list and open issues.
Shamrock Gardens Elementary School (17)	\$ 31,358,351	New 45-classroom replacement facility.	August 2022	Complete	99 %	The Shamrock Gardens Elementary School has been occupied by staff and students. The construction manager continues completing punch list items and final closeout documents.
Sharon Elementary School (17)	\$ 9,125,862	Add 16 classroom building and increase capacity of cafeteria.	August 2021	Complete	100 %	Project is complete.
South Academy of International Languages (fka New K-8 School (South) (17)	\$ 41,209,367	New 71 classroom K-8 Language Immersion facility located on the old Nations Ford Elementary School site.	August 2021	Complete	100 %	Project is complete.
South Mecklenburg High School (17)	\$ 15,622,927	Renovate/replace two classroom buildings built in 1958 to upgrade learning conditions.	January 2025	Design Development	0 %	The South Mecklenburg High School Addition project architect completed the schematic design phase. The design project has progressed into the design development phase. Collaboration with the school's administration, JROTC Program Staff and CTE Department continue to interact. Design scope includes a 2-story classroom building addition with 19 classrooms.
South Pine Academy (17)	\$ 30,822,550	New 45-classroom elementary school to relieve Nations Ford, Sterling, and Steele Creek.	August 2021	Complete	100 %	Project is complete.
West Charlotte High School (17)	\$ 105,977,166	New 100 classroom school to replace current facility built in 1954.	August 2022	Complete	89 %	The new West Charlotte High School facility has been occupied by staff and students. The construction manager is now working with trade contractors to complete punch list and open issues. The temporary staff parking lot is paved and is being used. The demolition of existing buildings is underway. The team continues to coordinate the next phase of the project with school administration. The demolition and site work phase is scheduled for completion in August 2023.

August 2022

MONTHLY PROJECT PHOTOS

PROJECT PROGRESS PHOTOS



Palisades High School

PROJECT PROGRESS PHOTOS



Palisades High School

PROJECT PROGRESS PHOTOS



Palisades High School

PROJECT PROGRESS PHOTOS



Palisades High School

PROJECT PROGRESS PHOTOS



Palisades High School

PROJECT PROGRESS PHOTOS



West Charlotte High School Replacement

PROJECT PROGRESS PHOTOS



West Charlotte High School Replacement

PROJECT PROGRESS PHOTOS



West Charlotte High School Replacement

PROJECT PROGRESS PHOTOS



West Charlotte High School Replacement

PROJECT PROGRESS PHOTOS



West Charlotte High School Replacement

PROJECT PROGRESS PHOTOS



Shamrock Gardens Elementary School

PROJECT PROGRESS PHOTOS



Shamrock Gardens Elementary School

PROJECT PROGRESS PHOTOS



Shamrock Gardens Elementary School

PROJECT PROGRESS PHOTOS



Shamrock Gardens Elementary School

PROJECT PROGRESS PHOTOS



Lansdowne Elementary School

PROJECT PROGRESS PHOTOS



Lansdowne Elementary School

PROJECT PROGRESS PHOTOS



Lansdowne Elementary School

PROJECT PROGRESS PHOTOS



Lansdowne Elementary School

PROJECT PROGRESS PHOTOS



East Mecklenburg High School

PROJECT PROGRESS PHOTOS



East Mecklenburg High School

PROJECT PROGRESS PHOTOS



East Mecklenburg High School

PROJECT PROGRESS PHOTOS



Mint Hill Elementary School

PROJECT PROGRESS PHOTOS



Mint Hill Elementary School

PROJECT PROGRESS PHOTOS



Mint Hill Elementary School

PROJECT PROGRESS PHOTOS



Mint Hill Elementary School

PROJECT PROGRESS PHOTOS



Garinger High School

PROJECT PROGRESS PHOTOS



Garinger High School

PROJECT PROGRESS PHOTOS



Garinger High School

PROJECT PROGRESS PHOTOS



New ES Elon Park, Hawk Ridge, Polo Ridge

PROJECT PROGRESS PHOTOS



New ES Elon Park, Hawk Ridge, Polo Ridge

PROJECT PROGRESS PHOTOS



New HS Ardrey Kell, South Mecklenburg

PROJECT PROGRESS PHOTOS



New HS Ardrey Kell, South Mecklenburg

PROJECT PROGRESS PHOTOS



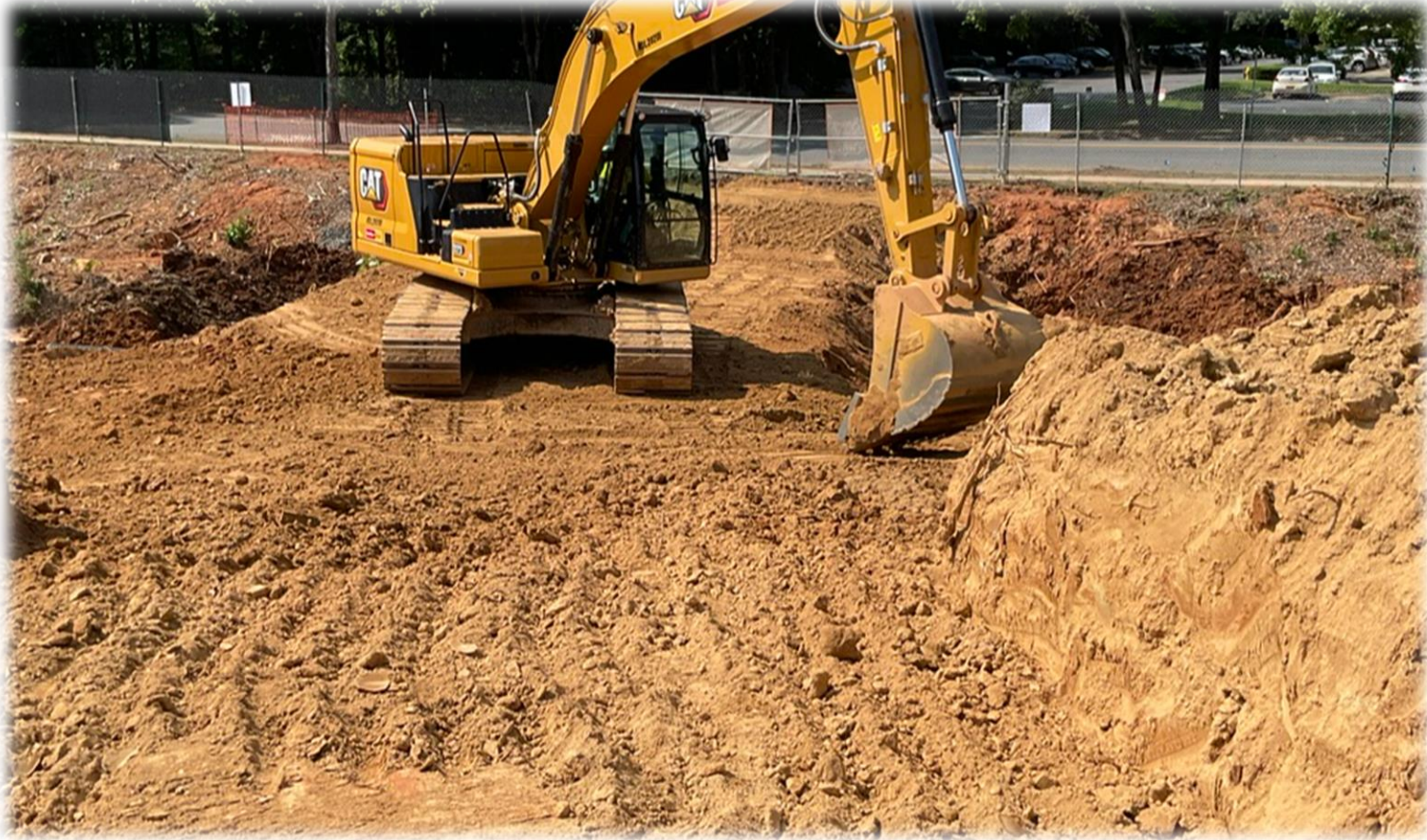
New HS Ardrey Kell, South Mecklenburg

PROJECT PROGRESS PHOTOS



New ES Windsor, Winterfield, Idlewild

PROJECT PROGRESS PHOTOS



New ES Windsor, Winterfield, Idlewild

PROJECT PROGRESS PHOTOS



New ES Windsor, Winterfield, Idlewild

PROJECT PROGRESS PHOTOS



New ES Hidden Valley, JW Grier, Newell

PROJECT PROGRESS PHOTOS



New ES Hidden Valley, JW Grier, Newell

PROJECT PROGRESS PHOTOS



New ES Hidden Valley, JW Grier, Newell

PROJECT PROGRESS PHOTOS



Mountain Island Lake Academy

PROJECT PROGRESS PHOTOS



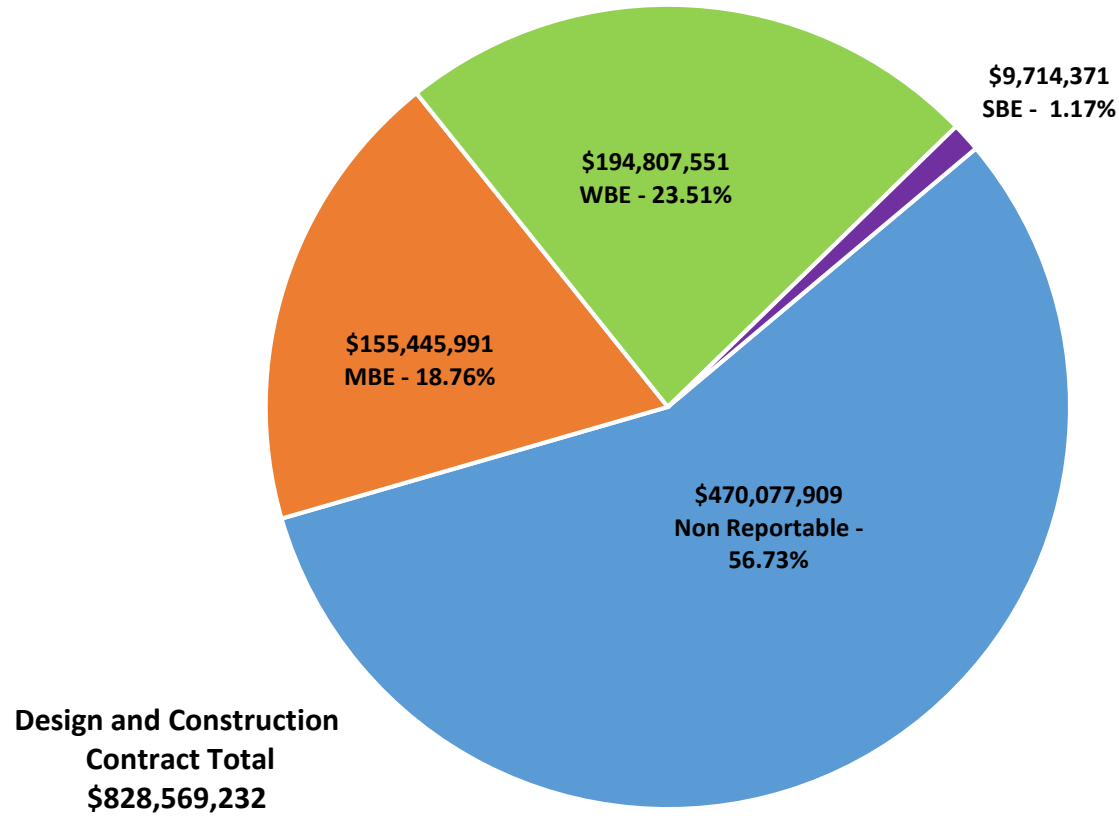
Mountain Island Lake Academy

MWSBE PARTICIPATION REPORT

Facility	Contract Amount	African American MBE\$	%	Other MBE \$	%	Total MBE \$	%	Other WBE \$	%	Other SBE \$	%	Total	%
<u>Briarwood Elementary School (17)</u>	\$28,691,373	\$4,020,515	14.01%	\$1,610,132	5.61%	\$5,630,647	19.62%	\$2,143,102	7.47%	\$140,500	0.49%	\$7,914,249	27.58%
<u>Career and Technology Education (17)</u>	\$5,958,999	\$525,859	8.82%	\$292,652	4.91%	\$818,511	13.74%	\$204,477	3.43%	\$63,430	1.06%	\$1,086,418	18.23%
<u>Charlotte-Mecklenburg Academy (17)</u>	\$17,035,852	\$198,536	1.17%	\$1,029,192	6.04%	\$1,227,728	7.21%	\$872,755	5.12%	\$13,200	0.08%	\$2,113,683	12.41%
<u>Collinswood Language Academy (17)</u>	\$38,527,704	\$649,287	1.69%	\$1,613,103	4.19%	\$2,262,390	5.87%	\$11,362,566	29.49%	\$9,328	0.02%	\$13,634,284	35.39%
<u>E.E. Waddell (17)</u>	\$2,065,933	\$0	0.00%	\$0	0.00%	\$0	0.00%	\$10,950	0.53%	\$0	0.00%	\$10,950	0.53%
<u>East Mecklenburg High School (17)</u>	\$12,676,283	\$603,811	4.76%	\$532,460	4.20%	\$1,136,271	8.96%	\$490,382	3.87%	\$681,075	5.37%	\$2,307,728	18.21%
<u>Garinger High School (17)</u>	\$4,240,502	\$228,140	5.38%	\$1,069,839	25.23%	\$1,297,979	30.61%	\$604,673	14.26%	\$462,000	10.89%	\$2,364,652	55.76%
<u>Harding High School (17)</u>	\$13,015,986	\$1,504,505	11.56%	\$310,356	2.38%	\$1,814,862	13.94%	\$4,010,831	30.81%	\$176	0.00%	\$5,825,869	44.76%
<u>JT Williams (17)</u>	\$15,272,031	\$2,000	0.01%	\$20,000	0.13%	\$22,000	0.14%	\$0	0.00%	\$51,800	0.34%	\$73,800	0.48%
<u>Lansdowne Elementary School (17)</u>	\$30,701,909	\$2,255,059	7.35%	\$498,305	1.62%	\$2,753,364	8.97%	\$2,339,232	7.62%	\$223,625	0.73%	\$5,316,221	17.32%
<u>Lincoln Heights Elementary School (17)</u>	\$2,076,767	\$92,274	4.44%	\$18,800	0.91%	\$111,074	5.35%	\$0	0.00%	\$74,503	3.59%	\$185,577	8.94%
<u>Mint Hill Elementary School (17)</u>	\$26,367,490	\$4,678,087	17.74%	\$18,825,991	71.40%	\$23,504,078	89.14%	\$1,240,643	4.71%	\$308,680	1.17%	\$25,053,401	95.02%
<u>Montclair Elementary School (17)</u>	\$26,093,784	\$3,617,952	13.87%	\$2,260,381	8.66%	\$5,878,333	22.53%	\$5,731,016	21.96%	\$517,257	1.98%	\$12,126,605	46.47%
<u>Mountain Island Lake Academy (17)</u>	\$12,499,991	\$129,862	1.04%	\$434,408	3.48%	\$564,270	4.51%	\$827,720	6.62%	\$30,300	0.24%	\$1,422,290	11.38%
<u>New Elementary School (Elon, Hawk)</u>	\$37,299,159	\$5,569,267	14.93%	\$2,413,545	6.47%	\$7,982,812	21.40%	\$7,990,684	21.42%	\$145,500	0.39%	\$16,118,996	43.22%
<u>New Elementary School (Hidden Vall)</u>	\$38,642,060	\$5,493,635	14.22%	\$4,211,754	10.90%	\$9,705,389	25.12%	\$2,237,544	5.79%	\$25,600	0.07%	\$11,968,533	30.97%
<u>New Elementary School (Windsor, W)</u>	\$41,201,074	\$8,807,507	21.38%	\$3,356,831	8.15%	\$12,164,338	29.52%	\$26,466,433	64.24%	\$7,440	0.02%	\$38,638,211	93.78%
<u>New High School (South, Ardrey) (17)</u>	\$132,694,076	\$1,867,976	1.41%	\$3,365,372	2.54%	\$5,233,348	3.94%	\$7,188,271	5.42%	\$3,913,152	2.95%	\$16,334,771	12.31%
<u>North Academy of World Languages (17)</u>	\$38,090,783	\$1,688,775	4.43%	\$1,575,863	4.14%	\$3,264,638	8.57%	\$3,471,693	9.11%	\$437,418	1.15%	\$7,173,748	18.83%
<u>Northwest School of the Arts (17)</u>	\$1,335,980	\$0	0.00%	\$0	0.00%	\$0	0.00%	\$9,350	0.70%	\$0	0.00%	\$9,350	0.70%
<u>Palisades High School (17)</u>	\$98,207,798	\$13,345,487	13.59%	\$5,874,324	5.98%	\$19,219,811	19.57%	\$8,478,743	8.63%	\$766,100	0.78%	\$28,464,654	28.98%
<u>Shamrock Gardens Elementary School (17)</u>	\$28,032,790	\$2,366,885	8.44%	\$1,469,007	5.24%	\$3,835,892	13.68%	\$23,207,193	82.79%	\$274,496	0.98%	\$27,317,581	97.45%
<u>Sharon Elementary School (17)</u>	\$8,525,796	\$326,844	3.83%	\$283,497	3.33%	\$610,341	7.16%	\$926,873	10.87%	\$217,984	2.56%	\$1,755,197	20.59%
<u>South Academy of International Languages (17)</u>	\$37,078,867	\$6,023,141	16.24%	\$2,431,071	6.56%	\$8,454,212	22.80%	\$10,758,761	29.02%	\$347,799	0.94%	\$19,560,772	52.75%

Facility	Contract Amount	African American MBE\$	%	Other MBE \$	%	Total MBE \$	%	Other WBE \$	%	Other SBE \$	%	Total	%
<u>South Mecklenburg High School (17)</u>	\$1,105,179	\$0	0.00%	\$0	0.00%	\$0	0.00%	\$0	0.00%	\$0	0.00%	\$0	0.00%
<u>South Pine Academy (17)</u>	\$26,161,268	\$916,165	3.50%	\$19,205,893	73.41%	\$20,122,058	76.92%	\$4,342,256	16.60%	\$237,754	0.91%	\$24,702,068	94.42%
<u>West Charlotte High School (17)</u>	\$95,160,407	\$13,318,476	14.00%	\$3,719,958	3.91%	\$17,038,434	17.90%	\$67,827,653	71.28%	\$481,479	0.51%	\$85,347,566	89.69%
<u>West Mecklenburg High School (17)</u>	\$9,809,391	\$283,809	2.89%	\$509,403	5.19%	\$793,212	8.09%	\$2,063,752	21.04%	\$283,775	2.89%	\$3,140,739	32.02%
Grandtotal	\$828,569,232	\$78,513,853	9.48%	\$76,932,137	9.28%	\$155,445,991	18.76%	\$194,807,551	23.51%	\$9,714,371	1.17%	\$359,967,913	43.44%

MWSBE Participation 2017 Bond Projects



August 2022

PROJECT CONTROLS

CHARLOTTE-MECKLENBURG BOARD OF EDUCATION
2013 BOND SERIES-CAPITAL IMPROVEMENT PROGRAM
BUDGET STATUS REPORT

	Original Project Budget	Current Project Budget	Committed Amount	Approved Change Orders	Total Committed	Pending Commitments	To Be Committed	Prev Paid To Date	Paid To Date	Balance To Complete	Monthly Expenditure
	(A)	(B)	(C)	(D)	(E)=C+D	(F)	(G)=(B-E-F)	(H)	(I)	(J)=(B-I)	(K)=(I-H)
<u>A. REPLACEMENT & RENOVATIONS</u>											
1 Career & Technology Education Institutes Phase 1:	\$8,640,000	\$18,697,857	\$6,963,309	\$11,734,547	\$18,697,857	\$0	\$1	\$15,387,246	\$15,696,726	\$3,001,131	\$309,480
2 Davidson K-8 Conversion	\$9,500,000	\$13,461,149	\$2,131,151	\$11,329,998	\$13,461,149	\$0	\$0	\$13,461,149	\$13,461,149	\$0	\$0
3 J.M. Alexander Middle Replacement	\$30,672,000	\$29,845,539	\$4,502,518	\$25,343,021	\$29,845,539	\$0	\$0	\$29,845,539	\$29,845,539	\$0	\$0
4 Nations Ford Elementary Replacement	\$19,440,000	\$19,231,604	\$3,958,871	\$15,272,733	\$19,231,604	\$0	\$0	\$19,231,604	\$19,231,604	\$0	\$0
5 Northwest School of the Arts	\$12,420,000	\$12,868,718	\$2,047,917	\$10,820,801	\$12,868,718	\$0	\$0	\$12,868,719	\$12,868,719	\$0	\$0
6 Oakhurst STEAM Magnet Elementary/Starmount	\$5,940,000	\$5,407,812	\$3,471,397	\$1,936,415	\$5,407,812	\$0	\$0	\$5,407,812	\$5,407,812	\$0	\$0
7 Pre-K-8 Conversions Phase II: Ashley Park/ Bruns	\$24,732,000	\$19,700,807	\$4,167,671	\$15,533,138	\$19,700,809	\$0	\$0	\$19,700,807	\$19,700,807	\$0	\$0
8 Selwyn Elementary	\$2,592,000	\$4,624,831	\$744,799	\$3,880,032	\$4,624,831	\$0	\$0	\$4,624,831	\$4,624,831	\$0	\$0
9 Statesville Road Elementary	\$20,340,000	\$20,648,509	\$5,081,473	\$15,567,037	\$20,648,509	\$0	\$0	\$20,648,509	\$20,648,509	\$0	\$0
10 West Mecklenburg HS	\$0	\$3,993,543	\$3,993,543	\$0	\$3,993,543	\$0	\$0	\$3,993,543	\$3,993,543	\$0	\$0
Total Replacement & Renovations	\$134,276,000	\$148,480,367	\$37,062,648	\$111,417,722	\$148,480,370	\$0	\$2	\$145,169,758	\$145,479,238	\$3,001,129	\$309,480
<u>B. RESPONSE TO ENROLLMENT GROWTH</u>											
1 East Mecklenburg High Addition	\$12,744,000	\$12,083,804	\$4,465,200	\$7,618,603	\$12,083,803	\$0	\$0	\$12,083,803	\$12,083,803	\$0	\$0
2 Myers Park High Addition	\$22,248,000	\$11,040,942	\$1,207,493	\$9,833,448	\$11,040,942	\$0	\$0	\$11,040,941	\$11,040,941	\$0	\$0
3 Northridge Middle Addition	\$6,448,000	\$6,366,170	\$2,114,306	\$4,251,865	\$6,366,171	\$0	\$0	\$6,366,171	\$6,366,171	\$0	\$0
4 Olympic High Addition/Renovation	\$8,964,000	\$8,947,310	\$2,002,694	\$6,944,615	\$8,947,310	\$0	\$0	\$8,947,310	\$8,947,310	\$0	\$0
5 South Mecklenburg High Addition	\$18,360,000	\$16,307,355	\$2,922,282	\$13,385,073	\$16,307,355	\$0	\$0	\$16,307,355	\$16,307,355	\$0	\$0
6 Charlotte East Language Academy (FKA -New Lang	\$30,376,000	\$31,387,929	\$5,740,182	\$25,647,747	\$31,387,929	\$0	\$0	\$31,387,929	\$31,387,929	\$0	\$0
7 Rea Farms STEAM Academy	\$31,376,000	\$40,476,000	\$9,062,022	\$30,187,065	\$39,249,087	(\$5,460)	\$1,232,373	\$38,898,906	\$38,898,906	\$1,577,094	\$0
8 Renaissance West STEAM Academy (FKA New Pre-	\$30,376,000	\$31,698,952	\$5,667,388	\$26,031,564	\$31,698,952	\$0	\$0	\$31,698,952	\$31,698,952	\$0	\$0
9 New High School - South Meck/Ardrey Kell Relief *	\$0	\$9,278,699	\$9,278,699	\$0	\$9,278,699	\$0	\$0	\$9,278,699	\$9,278,699	\$0	\$0
Total Response to Enrollment Growth	\$160,892,000	\$167,587,161	\$42,460,267	\$123,899,981	\$166,360,248	(\$5,460)	\$1,232,373	\$166,010,066	\$166,010,066	\$1,577,095	\$0
<u>C. CONTINGENCY</u>											
	\$0	\$0	\$0	\$0	\$0	\$0	\$0	\$0	\$0	\$0	\$0
Total Contingency	\$0	\$0	\$0	\$0	\$0	\$0	\$0	\$0	\$0	\$0	\$0
TOTAL LOCAL BOND PROGRAM	\$295,168,000	\$316,067,527	\$79,522,915	\$235,317,703	\$314,840,618	(\$5,460)	\$1,232,375	\$311,179,824	\$311,489,304	\$4,578,223	\$309,480

Original project estimated costs approved by the Board Of Education on July 23, 2013 and approved by the voters of Mecklenburg County on November 5, 2013.

Note: Mecklenburg County's appropriated interest from COPS to increase funding for the 2013 Bond Program.

CHARLOTTE-MECKLENBURG BOARD OF EDUCATION
2017 BOND SERIES-CAPITAL IMPROVEMENT PROGRAM
BUDGET STATUS REPORT

	Original Project Budget	Current Project Budget	Committed Amount	Approved Change Orders	Total Committed	Pending Commitments	To Be Committed	Prev Paid To Date	Paid To Date	Balance To Complete	Monthly Expenditure
	(A)	(B)	(C)	(D)	(E)=C+D	(F)	(G)=(B-E-F)	(H)	(I)	(J)=(B-I)	(K)=(I-H)
<u>A. REPLACEMENT & RENOVATIONS</u>											
1 Briarwood Elementary *	\$29,091,619	\$31,762,730	\$4,780,835	\$26,577,828	\$31,358,663	\$0	\$404,067	\$31,094,280	\$31,097,363	\$665,367	\$3,083
2 Bruns Academy Replacement	\$34,207,808	\$43,284,927	\$3,758,132	\$218,050	\$3,976,182	\$0	\$39,308,745	\$729,883	\$807,516	\$42,477,411	\$77,634
3 Career & Technology Education Upgrades	\$10,101,734	\$10,159,765	\$2,292,988	\$4,131,562	\$6,424,550	\$77,158	\$3,658,057	\$5,387,208	\$5,403,306	\$4,756,459	\$16,098
4 Collinswood K-8 *	\$44,172,540	\$41,422,560	\$4,927,491	\$36,495,033	\$41,422,524	\$0	\$36	\$41,401,384	\$41,401,384	\$21,176	\$0
5 East Mecklenburg HS	\$12,771,594	\$10,405,411	(\$1,565,743)	\$11,881,417	\$10,315,673	\$20,500	\$69,238	\$9,550,220	\$9,648,578	\$756,833	\$98,358
6 Garinger HS	\$13,936,979	\$5,986,979	\$1,634,120	\$3,475,359	\$5,109,479	\$9,250	\$868,250	\$2,831,752	\$2,883,062	\$3,103,917	\$51,310
7 Harding University High *	\$18,330,263	\$13,747,878	\$2,045,267	\$11,702,610	\$13,747,877	\$0	\$0	\$13,747,877	\$13,747,877	\$0	\$0
8 Charlotte-Mecklenburg Academy (FKA -EC Specialty	\$18,957,960	\$17,699,220	\$2,175,504	\$15,523,717	\$17,699,220	\$0	\$0	\$17,699,220	\$17,699,220	\$0	\$0
9 Lansdowne Elementary	\$29,391,270	\$34,078,834	\$4,178,697	\$29,467,186	\$33,645,882	\$33,075	\$399,877	\$26,879,873	\$27,783,053	\$6,295,781	\$903,180
10 Lincoln Heights Elementary	\$3,740,478	\$4,588,675	\$2,199,710	\$49,054	\$2,248,764	\$0	\$2,339,911	\$402,042	\$403,103	\$4,185,572	\$1,061
11 Montclair Elementary Replacement *	\$28,559,390	\$28,209,390	\$2,426,761	\$25,782,629	\$28,209,390	\$0	\$0	\$28,200,634	\$28,200,634	\$8,756	\$0
12 Mountain Island k-8	\$9,218,439	\$13,239,686	\$1,588,161	\$11,344,864	\$12,933,025	\$10,000	\$296,661	\$1,076,335	\$1,810,792	\$11,428,894	\$734,457
13 Northwest School of the Arts	\$17,632,202	\$20,467,000	\$2,068,982	\$117,644	\$2,186,626	\$0	\$18,280,374	\$63,090	\$155,956	\$20,311,044	\$92,866
14 Shamrock Gardens Elementary *	\$29,890,351	\$31,358,351	\$3,746,076	\$27,153,983	\$30,900,059	\$20,100	\$438,192	\$27,389,458	\$27,986,939	\$3,371,412	\$597,481
15 Sharon Elementary	\$7,706,528	\$9,125,862	\$1,443,456	\$7,666,984	\$9,110,441	\$0	\$15,421	\$9,047,784	\$9,047,784	\$78,078	\$0
16 South Mecklenburg HS	\$13,352,143	\$15,622,927	\$1,666,317	\$94,238	\$1,760,555	\$0	\$13,862,372	\$76,834	\$133,551	\$15,489,376	\$56,717
17 E.E. Waddell Magnet HS	\$4,571,709	\$5,137,367	\$2,173,463	\$98,796	\$2,272,260	\$0	\$2,865,107	\$503,049	\$828,859	\$4,308,508	\$325,810
18 West Charlotte HS Replacement	\$109,977,166	\$105,977,166	\$12,349,754	\$91,488,713	\$103,838,467	\$196,984	\$1,941,715	\$84,141,366	\$86,428,498	\$19,548,668	\$2,287,133
19 West Mecklenburg HS	\$11,065,440	\$6,457,359	(\$2,367,345)	\$8,670,708	\$6,303,362	\$0	\$153,997	\$6,260,309	\$6,260,309	\$197,050	\$0
20 John Taylor Williams	\$13,964,339	\$17,432,600	\$3,200,925	\$12,710,703	\$15,911,628	\$69,000	\$1,451,972	\$865,807	\$2,246,784	\$15,185,816	\$1,380,976
Total Replacement & Renovations	\$460,639,952	\$466,164,687	\$54,723,549	\$324,651,078	\$379,374,627	\$436,067	\$86,353,994	\$307,348,405	\$313,974,570	\$152,190,118	\$6,626,164
<u>B. RESPONSE TO ENROLLMENT GROWTH</u>											
1 South Academy of International Languages	\$45,359,367	\$41,209,367	\$6,046,436	\$35,058,579	\$41,105,015	\$0	\$104,352	\$40,567,415	\$40,571,122	\$638,245	\$3,706
2 North Academy of World Languages (FKA - New K-8	\$45,359,367	\$42,198,909	\$6,022,055	\$35,999,788	\$42,021,844	\$0	\$177,065	\$41,651,649	\$41,651,649	\$547,259	\$0
3 South Pine Academy (FKA - New ES Nations Ford, S	\$29,173,829	\$30,822,550	\$6,793,874	\$24,015,688	\$30,809,562	\$0	\$12,987	\$30,462,608	\$30,464,068	\$358,482	\$1,460
4 Mint Hill Elementary School	\$29,988,332	\$30,455,951	\$3,559,844	\$26,621,982	\$30,181,827	\$29,786	\$244,339	\$23,614,215	\$24,839,594	\$5,616,357	\$1,225,379
5 New Elementary School - Windsor Park Relief *	\$30,422,230	\$45,297,022	\$11,090,872	\$31,659,394	\$42,750,266	\$5,000	\$2,541,756	\$5,378,173	\$6,844,659	\$38,452,363	\$1,466,486
6 New Elementary School - Elon/Hawk Ridge Relief *	\$30,426,712	\$51,856,962	\$14,233,994	\$35,172,026	\$49,406,020	\$0	\$2,450,941	\$15,364,627	\$16,473,055	\$35,383,907	\$1,108,428
7 New Elementary School - Hidden Valley Relief	\$30,518,345	\$43,579,387	\$4,521,938	\$36,548,935	\$41,070,873	\$0	\$2,508,515	\$5,782,994	\$7,980,602	\$35,598,785	\$2,197,608
8 Palisades High School	\$109,908,793	\$108,908,793	\$11,348,416	\$97,051,295	\$108,399,712	\$66,706	\$442,376	\$95,881,668	\$97,960,190	\$10,948,603	\$2,078,522
9 New High School - South Meck/Ardrey Kell Relief *	\$110,287,621	\$158,786,358	\$12,440,603	\$125,624,701	\$138,065,304	(\$2,027)	\$20,723,081	\$15,258,033	\$17,627,127	\$141,159,231	\$2,369,095
Total Response to Enrollment Growth	\$461,444,596	\$553,115,298	\$76,058,033	\$447,752,390	\$523,810,422	\$99,465	\$29,205,411	\$273,961,382	\$284,412,065	\$268,703,232	\$10,450,683
<u>C. CONTINGENCY</u>											
	\$0	\$0	\$0	\$0	\$0	\$0	\$0	\$0	\$0	\$0	\$0
Total Contingency	\$0	\$0	\$0	\$0	\$0	\$0	\$0	\$0	\$0	\$0	\$0

CHARLOTTE-MECKLENBURG BOARD OF EDUCATION
2017 BOND SERIES-CAPITAL IMPROVEMENT PROGRAM
BUDGET STATUS REPORT

	Original Project Budget	Current Project Budget	Committed Amount	Approved Change Orders	Total Committed	Pending Commitments	To Be Committed	Prev Paid To Date	Paid To Date	Balance To Complete	Monthly Expenditure
	(A)	(B)	(C)	(D)	(E)=C+D	(F)	(G)=(B-E-F)	(H)	(I)	(J)=(B-I)	(K)=(I-H)
TOTAL LOCAL BOND PROGRAM	\$922,084,548	\$1,019,279,985	\$130,781,582	\$772,403,467	\$903,185,049	\$535,531	\$115,559,406	\$581,309,788	\$598,386,635	\$420,893,350	\$17,076,847

Original project estimated costs approved by the Board Of Education on July 25, 2017 approved by the voters of Mecklenburg County on November 7, 2017.

*Project included in \$33.2M early funding approved by Board Of Education on August 9, 2016 and Mecklenburg Board of County Commissioners on September 6, 2016. On February 19, 2019 an additional \$8M was approved for New Elementary School - Elon/Hawk Ridge Relief site.

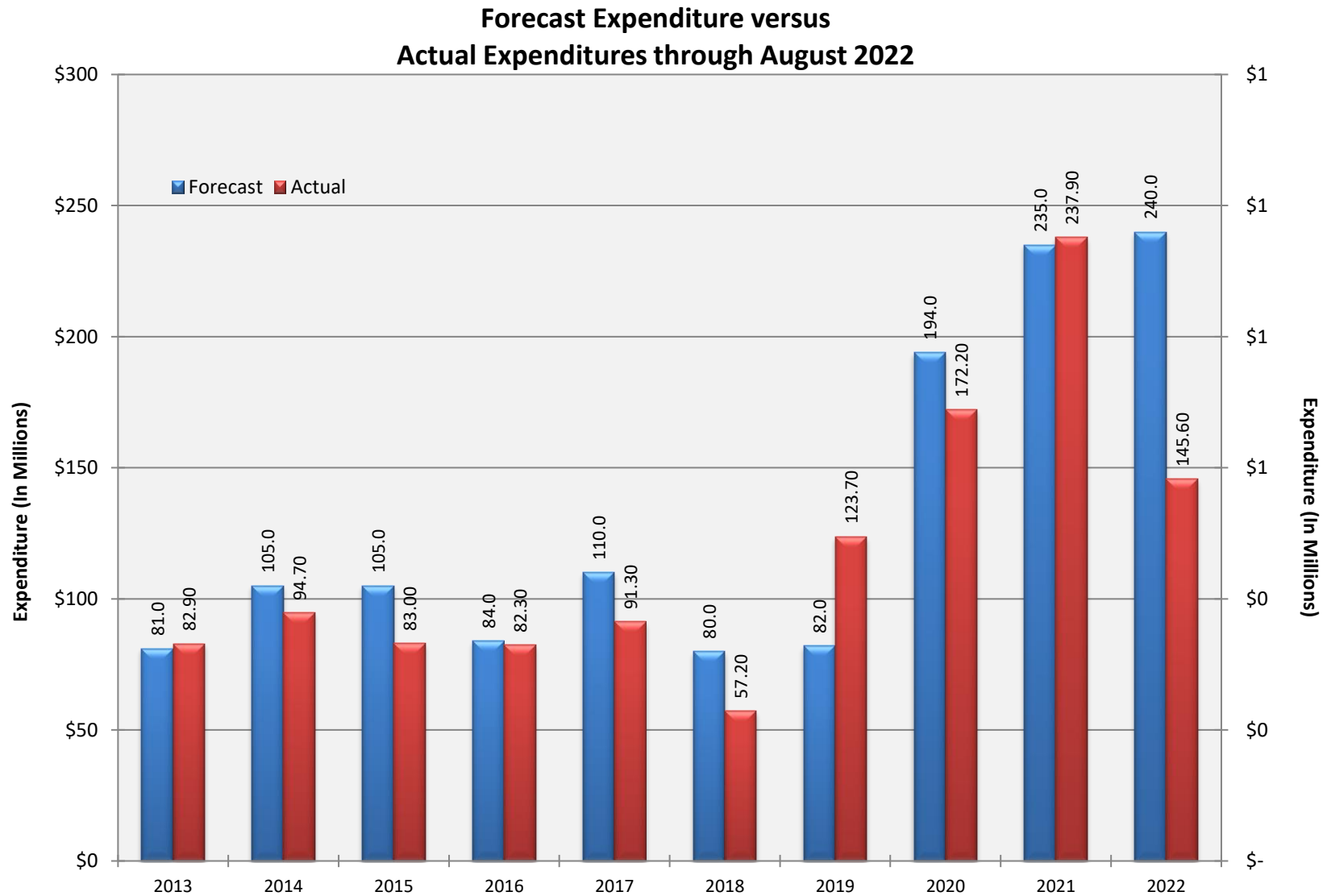
*Current Budget includes an additional \$89.2M to fund increase land and construction costs. The additional funds were approved by the Board of County Commissioners on June 16, 2020.

Charlotte-Mecklenburg Board of Education
Approved Construction or Repair Change Orders*
Reporting Period: August 2022

Funding Source	Project Name	Contractor	Description	Change Order Amount	Revised Contract Value
2017 Bond	West Charlotte High School (17)	Rodgers-Holt Brothers, a JV	Painting, tile and drywall modifications; Bulk CO2 Tank and Pool Chemicals; Add Mirrors; Upgrade Floor Wax; Mechanical Yard Concrete Pads: Added Handrail & Fence Guardrail; Weight Room Layout Turf	(\$611.00)	\$88,611,528.00

* Not previously presented to the Board of Education for Approval (less than \$90,000)

10 YEAR EXPENDITURE SUMMARY



GLOSSARY

Glossary

- **Project Management** – This section includes updates from our project managers and describes the currently active construction projects. This includes from Board of Education award thru final completion.
- **Design and Bidding** – This section contains updates from our design managers on the projects currently in the design phase. This phase from design award to Board of Education award of construction.
- **Controls** – Section includes misc. updates from controls group including expenditures, related Board of Education awards during the reporting period, cash flow information. This section covers all projects from approved bond through final expenditures and bond close with the county.
- **MWSBE** – Contains updates from the MWSBE Director and team, including current activity and summaries of the participation by MWSBE providers on our program.
- **Bond Progress Summary** – Provides a summary of bond financials including bond value, committed/pending amounts, paid to date, expended this month.
- **Project Procurement Dates** - Next 90 Days major project bid activity.
- **Mobile Swing Space Utilization** – Includes a summary of program related swing space currently in use and the schedule of use.
- **Bond Summary Schedule** – Current program summary schedule including planned design, construction and FF&E. These activities are fed from detailed schedules and are fine-tuned as project information is available.
- **Project Contractor Teams**; Provides summary of turnover dates for completed/closed projects since 2010 including architects/designers and contractors.
- **School Site Location Maps** – General location of bond projects (2017) by type.
- **Project Status Report** – This section of the report provides a summary of the bond project scope, current estimate (all sources), planned occupancy/actual occupancy date. It also provides a current status of the design phase, construction progress and a brief update. The report currently includes 2013 and 2017 bond projects that have or will be completed after to August 2016.
- **MWSBE Participation Report** – The MWSBE report provides a summary of the participation on the 2013 & 2017 Bond funded projects.
- **Project Progress Photos** – Includes photos of active construction projects.
- **Budget Summary Reports** – These reports are by funding source and summarize financial activity to date on the projects. This includes original and current project estimates, committed values, amounts paid to date, balances and monthly expenditures.
- **Change Orders < \$90,000** – This month's approved construction or repair change orders < \$90,000.
- **Expenditure Summary** – Provides a summary of Bond Expenditures by calendar year.