

Capital Improvement Program

Monthly Bond Report
July 2022



New High School Ardrey Kell, South Mecklenburg Relief



CAPITAL PROGRAM SERVICES Capital Improvement Program

JULY 2022
MONTHLY BOND REPORT

PROGRAM OVERVIEW

- Project Management
- Design and Bidding
- Controls
- MWSBE
- Bond Progress Summary
- Project Procurement - Next 90 Days
- Swing Space Utilization
- Bond Summary Schedule
- Project Contractor Teams; Projects in Design/Construction and Substantially Completed/Closed
- School Site Location Maps
 - Elementary Schools
 - Middle Schools
 - High Schools & Specialty Schools

PROJECT STATUS REPORT

MWSBE PARTICIPATION REPORT

PROJECT PROGRESS PHOTOS

PROJECT CONTROLS

- Budget Summary Reports
 - 2013 Bond Series
 - 2017 Bond Series
- Change Orders < \$90,000
- Expenditure Summary

GLOSSARY

PROGRAM OVERVIEW

PROJECT MANAGEMENT

The following is a summary of the activity on the bond funded projects in construction during the month of July.

The construction manager for **East Mecklenburg High School** has reached substantial completion. Project is now in the closeout phase. The new classroom wing will be occupied in August.

The contractor for **E.E. Waddell** continues with the phased construction renovations. The media center, maker space, and science wing renovations phase is nearing completion with anticipated substantial completion for this phase in August. The classroom lighting is being upgraded with LED fixtures and unit ventilators are being repaired and or replaced. The project is scheduled for completion January 2023.

The **Garinger Addition and Renovation** construction manager received temporary occupancy early July which released FF&E move in. The delayed secondary boiler has shipped and is expected in early August. The construction manager mobilized and began selective demolition of the 300 building. The 16-classroom addition will be occupied in August. The 300 Building renovations have started and are scheduled to complete January 2023.

The construction manager for **JT Williams Secondary Montessori** is progressing with preparations for paving and the fire line installation. The 100 Building renovations continue, and trade contractors have started the above ceiling rough ins. A 10-classroom modular is also being placed on site to provide swing space while renovations in the 200 Building take place and provide future classroom space.

The **Lansdowne Elementary School** construction manager has moved into final finishes. The architect and engineers have been inspecting the site and completing a punch list. The final clean and floor wax has progressed through the building. Installation and programming of electronic systems is underway. The bus lot entrance road and final lift of asphalt is now complete. Principal and staff will move into the facility shortly. The replacement school will be occupied in August. Upon completion of the new building demolition and remaining site work will commence and be completed in 2023.

The **Mint Hill Elementary School** (*fka Bain, Lebanon, Piney Grove Relief*) construction manager continues to work on interior finishes. The project has received occupancy approval from Mecklenburg County Building Standards and substantial completion for the project will be issued. The architect and engineers have produced the projects punch list and trade contractors are working off issues. The parking lots have been paved and striped. The site is stabilized, and landscaping is installed. The teams continue to address supply chain issues impacting the delivery of required electrical panels and the generator and are providing substitutions and temporary solutions to allow the construction sequencing to continue. The road work continues and based on current product lead times the signal installation will occur in the winter 2023. The project is scheduled for occupancy in August.

The **Mountain Island Lake Academy Gym/Classroom Addition** construction manager completed clearing and grubbing of the site along with installation s of the erosion control measures. Demolition of the existing staff lot was completed on schedule with preparations being made to install the temporary lot for the upcoming school year. The installation of the irrigation system for the field started late July. The four classroom and gym addition are scheduled for occupancy August 2023.

The **New Elementary School (Elon, Hawk Ridge, Polo Relief)** construction manager continued with grading operations. Foundations and other permittable work will commence once permits are approved and received from the authorities having jurisdiction. The Park and Recreation Center is in the bid and we anticipate approval in September. The new 45-classroom elementary school will be located across from the Ardrey Kell High School and is currently scheduled for occupancy August 2023.

The **New Elementary School (Hidden Valley, JW Grier, Newell Relief)** is progressing with footings and underground raceways and conduits. The site contractor has started installing the underground storm piping. The construction team continues to work through supply chain material deliveries that includes electrical switch gear, roofing materials and storm water piping. This new 45-classroom school will be located next to Northridge Middle School and is scheduled for occupancy August 2023.

The **New Elementary School (Windsor Park, Winterfield, Idlewild Relief)** construction manager continues site grading. A section of the classroom building is on grade allowing some footings to progress. There are Duke Power underground primary lines feeding the adjacent property owners that will need to be relocated requiring executed easements. Getting these documents finalized and the lines relocated is holding up the completion of the remaining site work and potentially impacting the construction completion date. The storm water quality and erosion control ponds have been established. Gravel lots have been installed to accommodate construction parking. This new 45-classroom school is currently scheduled for occupancy August 2023.

The **New High School (South, Ardrey Relief)** construction manager completed the phase one blasting and final graded the building pad. Site utilities continued in available areas. Foundations and other permissible work will commence once permits are approved and received from the authorities having jurisdiction. The new 100-classroom relief high school is scheduled for occupancy August 2024.

The construction manager for the **Palisades High School (aka New High School Olympic Relief)** continued working toward finals for permanent certificate of occupancy and completing punch list items. The 100-classroom relief high school will be occupied in August 2022.

The **Shamrock Gardens Elementary School** construction manager continued completing the punch list and final closeout documents. The 45-classroom replacement building will be occupied in August.

The trade contractors continue to work towards completion throughout the new **West Charlotte High School** facility. The project has reached substantial completion and the architect and engineers have completed the building walk through and punch list. The trade contractors are diligently working to complete open issues from the punch list. FF&E is well underway in the administration wing and classrooms. The principal and school staff have transitioned into the new building and are preparing for the August occupancy. The team continues to coordinate with school administration on the transition into the next phase of the project. The next phase is scheduled for completion in August 2023 and includes the demolition of the existing school and final site work.

DESIGN AND BIDDING

The following is a summary of the activity on the bond funded projects in design and bidding phase during the month of July.

The **Bruns Avenue Elementary Replacement** project received the design development submittal and is in the review process. Discussions continue with CDOT regarding the traffic memorandum study and scope. Collaboration with Parks & Recreation continue to progress. This new 45-classroom school facility is being designed with a full-size gym and associated areas in coordination with Charlotte-Mecklenburg Parks & Recreation. The school is scheduled to start construction in spring of 2023 and be occupied August of 2024.

The **Lincoln Heights Elementary** project is scheduled to receive bids in August. The renovation/modifications to the building will be phased and are scheduled to be completed in winter of 2023.

The **Northwest School of the Arts Additions** project has progressed into the schematic design phase. Further investigations are necessary on the building addition location(s). The design team is also studying the existing school program of spaces for scope and construction coordination purposes. Initial scope includes a classroom building that replaces the existing visual arts classroom building.

The **South Mecklenburg High School Addition** project has progressed into the schematic design phase. The next design submittal is scheduled for August 2022. Initial scope includes a classroom building addition of 19 classrooms.

CONTROLS

Expenditures for the month of July were \$15.9M against the 2023 fiscal year cash flow projection of \$230M. The Controls team provided a quarterly update to Mecklenburg County for the 2013 and 2017 Bond Programs. The update included the status of projects and cash flow projection. The update included projects with occupancy in August 2022 and projects scheduled to bid in fiscal year 2023. Additionally, the Controls team continues the reconciliation and closeout of completed 2013 and 2017 bond projects. Available funding is being accumulated to be used for future capital needs.

The Controls team continues to submit notices of potential changes at school sites so senior staff can adequately evaluate any issues. Additionally, the Controls team continues the processing of contracts, invoices, preparing notices of potential change, change orders, pay applications and check requests for projects under construction. Captured construction cost data is used to prepare financial reports such as detailed cost reports, budget summaries, reconciliation to CMS books, revisions to and updated cash flows and complete special financial requests by CMS and Mecklenburg County. This process, along with data compilation and management, allows senior staff to provide the proper guidance/direction and accurate information to the program stakeholders.

No Bond related consent items were submitted for Board of Education approval during the month of July.

MWSBE

As of July 2022, the overall MWSBE utilization percentage related to design and construction of the 2017 bond projects is 43.35% which includes 18.73% participation by minority contractors, 23.40% by women contractors and 1.22% participation by small business contractors. This accounts for more than \$358 million of utilization by Minority, Women and Small Business Contractors.

The Diversity & Inclusion Office of Charlotte-Mecklenburg Schools continued to conduct several individual virtual orientations with new MWSBE contractors and prime contractors. In addition, team members also attended/hosted the following outreach sessions/pre-bid meetings and/or workforce development opportunities:

Outreach Sessions:

- Building Services Procurement Workshop
- Elon Park Relief and Rec Center outreach hosted by
- Lincoln Heights Pre-Bid Meeting hosted by
- J. T. Williams Pre-Construction Meeting
- Charlotte MED Week Planning Meeting
- American Contract Compliance Association National Training Institute Planning Meetings

Workforce Development:

CMS Office of Diversity & Inclusion and Capital Program Services hosted two (2) CMS student summer interns through the Mayor's Youth Employment Program (MYEP). The interns participated in virtual and in-person

meetings with CMS Executive Staff and department leaders related to their areas of interest and attended a civil rights symposium with CMS staff. The interns toured Palisades High School with the architect and CMS project team to understand how design and building impacts student experiences and outcomes. Special thank you to Little Architect for facilitating the tour. The student interns also participated in relevant on-line coursework through LinkedIn Learning.

Over the next month, team members will continue to work with contractors interested in bidding on the upcoming school projects utilizing various virtual tools to communicate. Contractors are encouraged to review bid advertisements in Charlotte Observer and register as a vendor on the North Carolina Interactive Purchasing System for notification of the various opportunities.

BOND PROGRESS SUMMARY As of July 2022

Funding Source and Value		Amount Committed/Pending	Amount Paid to Date	Amount Expended This Period
2013 Bond	\$316,067,527	\$314,835,158	\$311,179,824	\$360,760
2017 Bond	\$1,019,279,985	\$901,931,442	\$581,309,788	\$15,493,872
Grand Total	\$1,335,347,512	\$1,216,766,600	\$892,489,612	\$15,854,632

UPCOMING MAJOR CONSTRUCTION PROCUREMENT DATES *Three Month Look Ahead*

School Name

Lincoln Heights

Bid Dates*

August 2022

** NOTE: Work In Progress...Dates Subject to Change.*

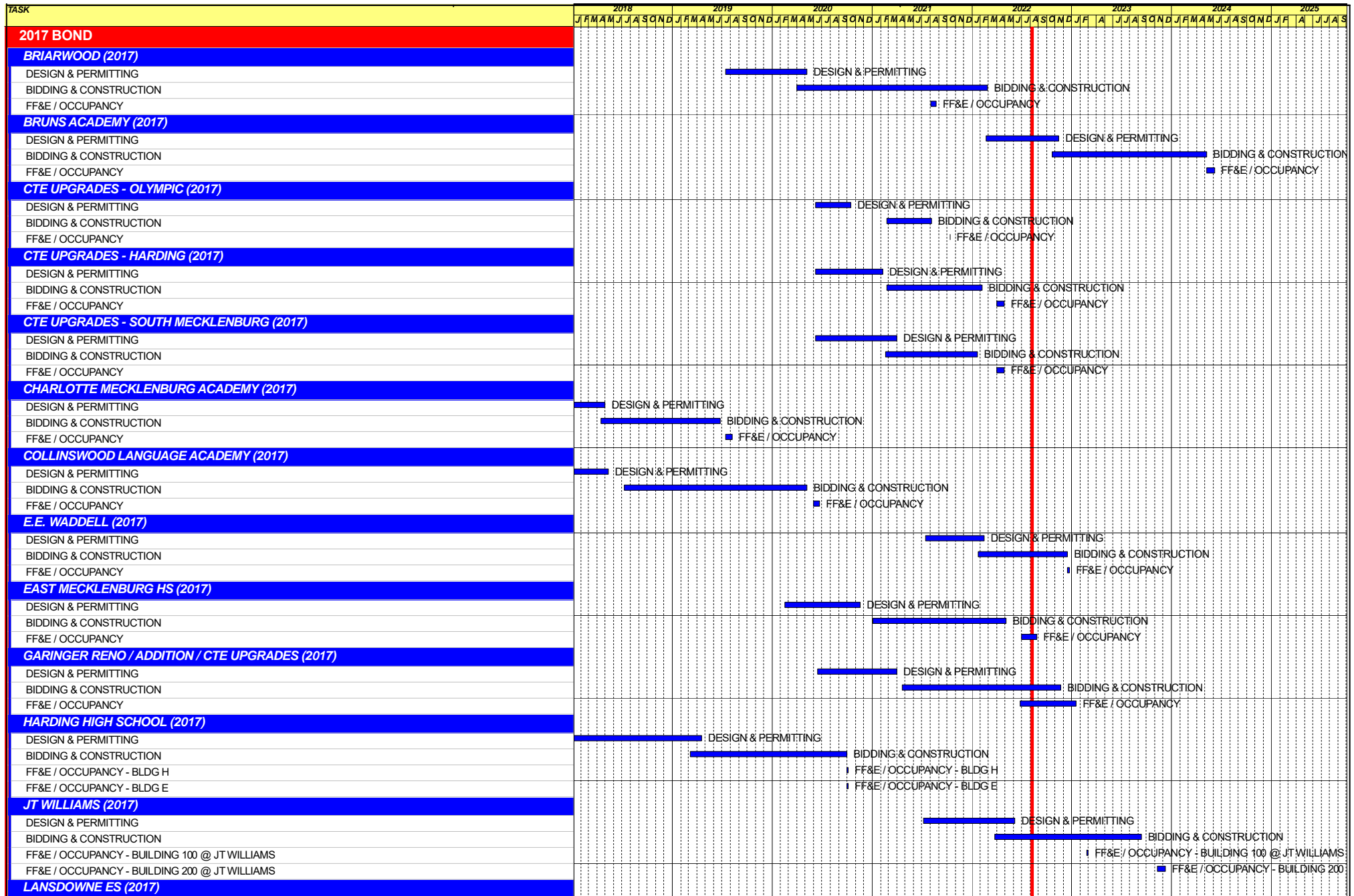
SWING SPACE UTILIZATION

Creating a temporary space for students and staff to occupy during construction on a school’s campus has proven to be beneficial to the project’s schedule and cost and overall safety and efficiency of school operations. When the renovation or expansion of a facility is performed and the facility must remain functionally operational, there are benefits to the owner in using swing space.

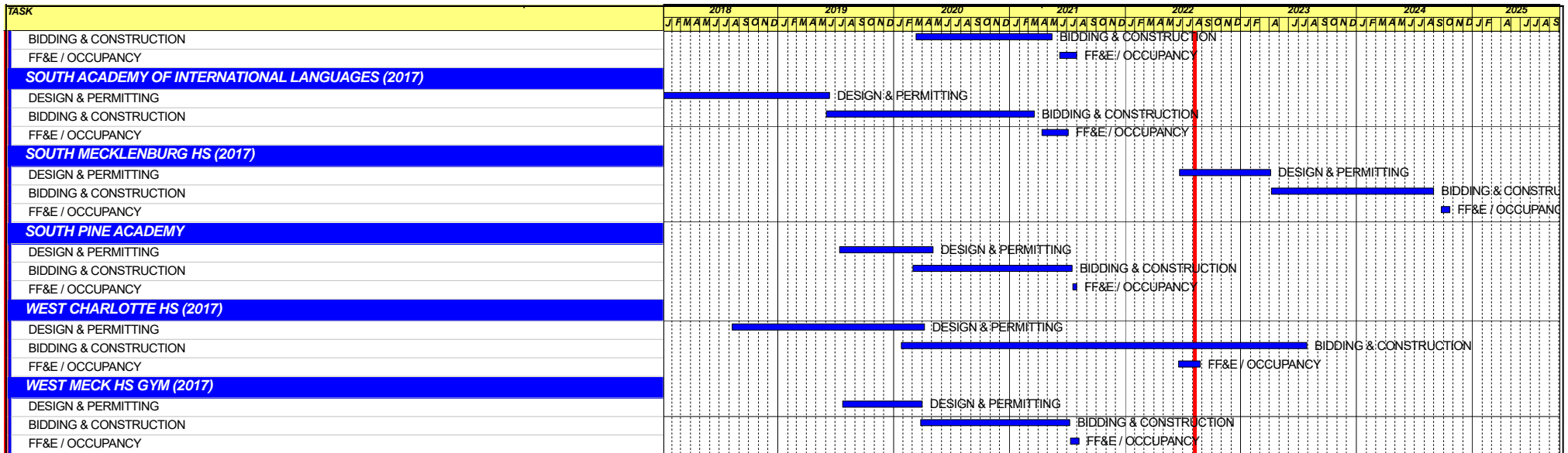
We have successfully utilized both onsite and offsite swings. The most desirable swings are “offsite” ones. Onsite swing using mobiles or modulars, likewise has been successfully used. The following is a summary of current swing options planned or in use.

<u>School</u>	<u>No. of Mobiles/Relocation Site</u>	<u>Status (From – To)</u>
---------------	---------------------------------------	---------------------------

None at this time		
-------------------	--	--



TASK	2018	2019	2020	2021	2022	2023	2024	2025
DESIGN & PERMITTING	J F M A M J J A S O N D	J F M A M J J A S O N D	J F M A M J J A S O N D	J F M A M J J A S O N D	J F M A M J J A S O N D	J F A J J A S O N D	J F M A M J J A S O N D	J F A J J A S O N D
BIDDING & CONSTRUCTION								
FF&E / OCCUPANCY								
LINCOLN HEIGHTS (2017)								
DESIGN & PERMITTING								
BIDDING & CONSTRUCTION								
FF&E / OCCUPANCY								
MONTCLAIRE ES (2017)								
DESIGN & PERMITTING								
BIDDING & CONSTRUCTION								
FF&E / OCCUPANCY								
MOUNTAIN ISLAND LAKE ACADEMY (2017)								
DESIGN & PERMITTING								
BIDDING & CONSTRUCTION								
FF&E / OCCUPANCY								
MINT HILL ES (2017)								
DESIGN & PERMITTING								
BIDDING & CONSTRUCTION								
FF&E / OCCUPANCY								
NEW ES (ELON, HAWK, POLO) (2017)								
DESIGN & PERMITTING								
BIDDING & CONSTRUCTION								
FF&E / OCCUPANCY								
NEW ES (HIDDEN VALLEY, GRIER, NEWELL) (2017)								
DESIGN & PERMITTING								
BIDDING & CONSTRUCTION								
FF&E / OCCUPANCY								
NEW ES (WINDSOR, WINTERFIELD, IDLEWILD) (2017)								
DESIGN & PERMITTING								
BIDDING & CONSTRUCTION								
FF&E / OCCUPANCY								
NEW HS (OLYMPIC) (2017)								
DESIGN & PERMITTING								
BIDDING & CONSTRUCTION								
FF&E / OCCUPANCY								
NEW HS SOUTH (ARDREY KELL, MYERS PARK, OLYMPIC) (2017)								
DESIGN & PERMITTING								
BIDDING & CONSTRUCTION								
FF&E / OCCUPANCY								
NORTH ACADEMY OF WORLD LANGUAGES								
DESIGN & PERMITTING								
BIDDING & CONSTRUCTION								
FF&E / OCCUPANCY								
NORTHWEST SCHOOL OF THE ARTS (2017)								
DESIGN & PERMITTING								
BIDDING & CONSTRUCTION								
FF&E / OCCUPANCY								
SHAMROCK GARDENS (2017)								
DESIGN & PERMITTING								
BIDDING & CONSTRUCTION								
FF&E / OCCUPANCY								
SHARON ES (2017)								
DESIGN & PERMITTING								



Capital Improvements Program

Projects in Design or Under Construction

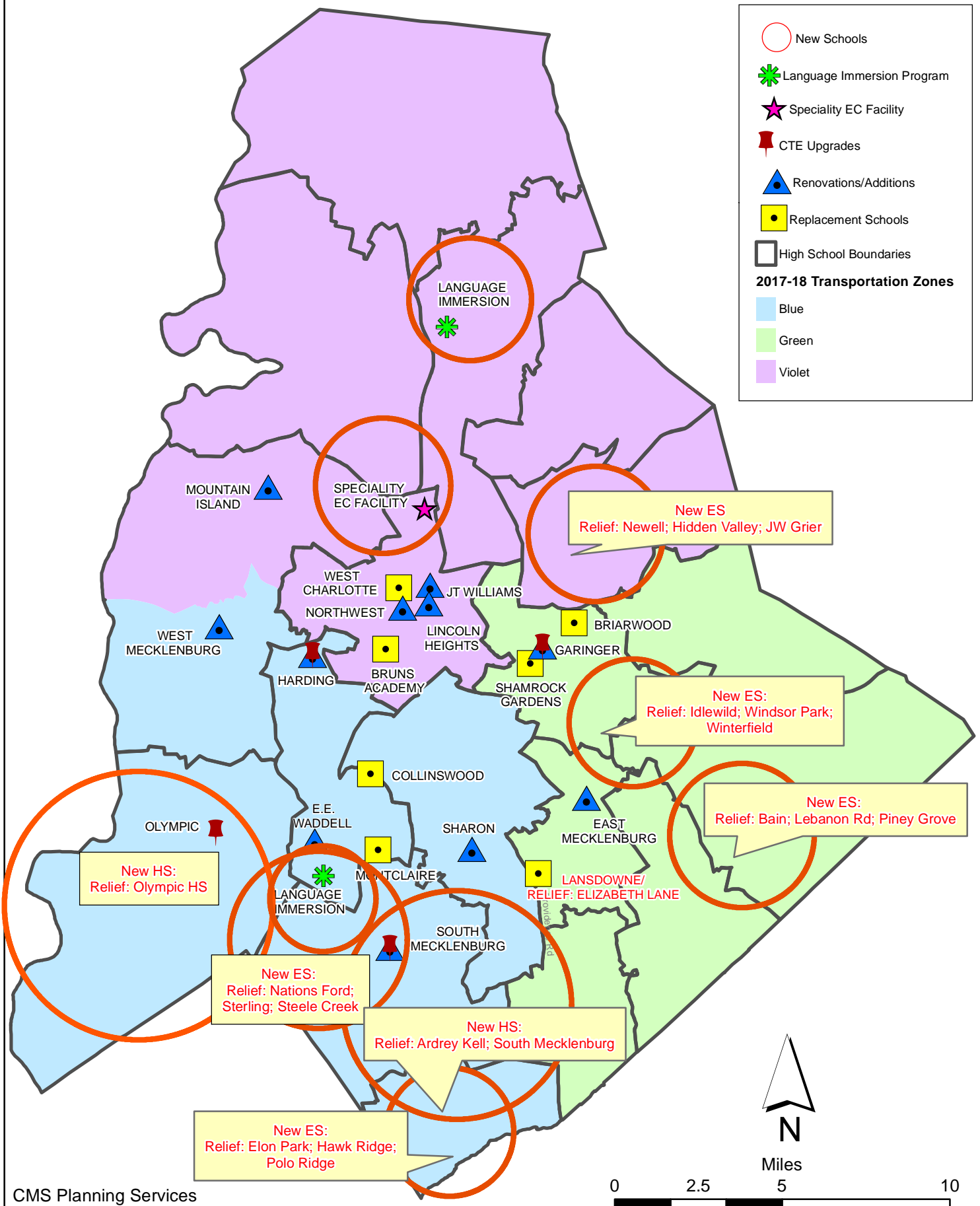
School	Architect	General Contractor/CM
Projects In Design		
Lincoln Heights Repurpose (17)	Neighboring Concepts	Randolph & Sons
New Bruns Avenue ES (17)	ADW	Edifice, Inc.
Northwest School of the Arts Addition (17)	LS3P	Balfour Beatty
South Mecklenburg High School Addition (17)	Morris Berg	Balfour Beatty
Projects in Bid/Award/Construction Phase		
East Mecklenburg High School (17)	Morris Berg	Turner Construction
E.E. Waddell (17)	Moseley	Randolph & Sons
Garinger Addition/Renovation & CTE (17)	LS3P	Balfour Beatty
J.T. Williams (17)	FWA	New Atlantic
Lansdowne Elementary School Replacement (17)	Perkins Eastman	Edifice, Inc.
Mint Hill ES (17) <i>(fka Bain, Lebanon Rd, Piney Grove)</i>	FWA	Metcon
Mountain Island School (17)	ADW	Whiting-Turner
New ES (Elon,Hawk Ridge, Polo Ridge) (17)	Little Diversified	Balfour Beatty
New ES (Hidden Valley, JW Grier, Newell) (17)	ADW	Edifice, Inc.
New ES (Windsor, Winterfield, Idlewild) (17)	Neighboring Concepts	Rodgers-Holt Brothers
New HS (South, Ardrey) (17)	Ratio	Messer
Palisades High School (Olympic Relief) (17)	Little Diversified	Edifice, Inc.
Shamrock Gardens Elementary School Replacement (17)	Little Diversified	Rodgers-Holt Brothers
West Charlotte High School (17)	LS3P	Rodgers-Holt Brothers

Capital Improvements Program
Projects Substantially Completed/Closed *

School	Turnover Year	Architect	General Contractor
CTE (Harding, Olympic, South) (17)	Jan-22	MPS	Branch Brownstone
Briarwood Elementary School Replacement (17)	Aug-21	ADW	New Atlantic Contracting
Montclair Elementary School (17)	Aug-21	WHN	Messer Construction
North Academy of World Languages (17)	Aug-21	ADW	New Atlantic Contracting
Sharon Elementary School (17)	Aug-21	Clark Nexsen	Samet
South Academy of International Languages (17)	Aug-21	FWA	Messer Construction
South Pine Academy (17)	Aug-21	FWA	Metcon
West Mecklenburg Gym (17)	Aug-21	Moseley	Barnhill/D.A. Everett
Collinswood Language Academy (17)	Aug-20	Perkins Eastman	Turner Construction
Harding High School Renovation (17)	Aug-20	SFLA	Barnhill Contracting
Rea Farms STEAM Academy (13)	Aug-20	Little Diversified	Balfour Beatty
Ashley Park K-8 Conversion (13)	Aug-19	ADW	Turner Construction
Druid Hills K-8 Conversion (13)	Aug-19	ADW	Edifice, Inc.
Selwyn Elementary (13)	Aug-19	Clark Nexsen	Balfour Beatty
Charlotte Mecklenburg Academy (17)	Aug-19	KSQ	Edifice, Inc.
Davidson K-8 (13)	Aug-19	Little Diversified	Gilbane
CTE - North Mecklenburg High (13)	Aug-19	LS3P	Shiel Sexton
CTE - Garinger (13)	Mar-19	LS3P	Hostetter & Son
CTE - Independence (13)	Mar-19	LS3P	D.E. Brown
CTE - West Mecklenburg (13)	Mar-19	LS3P	Hostetter & Son
Charlotte East Language Academy (13)	Aug-18	Morris Berg	Edifice, Inc
Myers Park High School Phase 3 (13)	Aug-18	Boomerang Design	BE&K
Northridge Middle (13)	Aug-18	Morris Berg	Barnhill Contracting
Myers Park High Bldg 2 (13)	Feb-18	Boomerang Design	BE&K
East Mecklenburg High Addition (13)	Jan-18	Bergman (fna Gantt Huberman)	Edifice, Inc.
J.M. Alexander Middle (13)	Aug-17	FWA Group	Balfour Beatty
Northwest School of the Arts Renovation (13)	Aug-17	Moseley	Turner Construction
Renaissance West STEAM Academy (13)	Aug-17	Little Diversified	Rodgers Construction
South Mecklenburg High Addition (13)	Jul-17	SFLA	Barnhill Contracting
Myers Park High Bldg 1 (13)	Sep-16	Boomerang	KBR
Statesville Road Elementary (13)	Aug-16	ADW	JE Dunn
Nations Ford Elementary (13)	Aug-16	Wash Hatem Nelson	Messer Construction
Olympic High Addition (13)	Aug-16	McMillan, Pazdan, Smith	Turner Construction
Lawrence Orr Elementary (07)	Aug-15	Cort Architectural Group	DH Griffin/Metcon
Parkside Elementary (07)	Aug-15	Wash Hatem Nelson	Clancy & Theys
Hawthorne High Renovations (07)	Aug-15	Morris-Berg	Balfour Beatty
Newell Elementary (07)	Aug-15	Perkins Eastman	New Atlantic Contracting
Ranson Middle (07)	Aug-15	Morris-Berg	Edifice, Inc.
Vance High	Jan-15	LS3P	Matthews Construction Co., Inc.
Garinger High - Renovations/Addition	Aug-14	Adams Group Architects	Turner Construction
Olympic High - Stadium	Aug-14	Site Solutions	Turner Construction
West Mecklenburg High - Stadium	Aug-14	Site Solutions	Turner Construction
Collinswood - Indoor Air Quality	Aug-14	PEA	The Bowers Group
Lansdowne - Indoor Air Quality	Aug-14	AeroRaq	Tyler 2
McKee Road - Indoor Air Quality	Aug-14	McCracken & Lopez	Godfrey Construction
Garinger High - Track & Field	Jul-14	Site Solutions	Turner Construction
Independence High - Gym	Jun-14	Shook Kelly	Shelco, Inc. (CM)
Palisades Park Elementary	May-14	Wash Hatem Nelson	Clancy & Theys
East Mecklenburg High Auditorium	Jan-14	Gantt Huberman Associates	Godfrey Construction Co., Inc.

Projects closed prior to 2014 are not shown

CMS Capital Improvement Plan 2017 Bond Projects



PROJECT STATUS REPORT



Monthly Project Status 2017 Bond Summary July 2022

Project	Current Project Estimate	Project Scope	** Occupy On	Design Phase	Construction Progress	Project Status
Briarwood Elementary School (17)	\$ 31,762,730	45-classroom replacement facility; replaces school built in 1956.	August 2021	Complete	100 %	The construction manager is finalizing closeout and the return of the Park and Recreation land used during construction.
Bruns Academy (17)	\$ 43,284,927	New 45-classroom elementary school (K-5); replaces old school built in 1969.	August 2024	Design Development	0 %	The Bruns Avenue Elementary Replacement project received the design development submittal and is in the review process. Discussions continue with CDOT regarding the traffic memorandum study and scope. Collaboration with Parks & Recreation continue to progress. This new 45-classroom school facility is being designed with a full-size gym and associated areas in coordination with Charlotte-Mecklenburg Parks & Recreation.
Career and Technology Education (17)	\$ 10,159,765	Phase I CTE upgrades at Olympic, Harding, Garinger and South Mecklenburg.	January 2022	Complete	99 %	The CTE projects at Harding and South Mecklenburg have completed the construction renovations.
Charlotte-Mecklenburg Academy (17)	\$ 17,699,220	New EC school located on the old Statesville Elementary School site.	August 2019	Complete	100 %	Project is complete.
Collinswood Language Academy (17)	\$ 41,422,560	New 63-classroom K-8 facility on the site of the Smith Family Center.	August 2020	Complete	100 %	Project is complete.
E.E. Waddell (17)	\$ 5,137,367	Repurpose current E.E. Waddell to reopen as a magnet high school.	August 2023	Complete	40 %	The contractor for E.E. Waddell continues with the phased construction renovations. The media center, maker space, and science wing renovations phase is nearing completion with anticipated substantial completion for this phase in August. The classroom lighting is being upgraded with LED fixtures and unit ventilators are being repaired and or replaced.

Monthly Project Status

2017 Bond Summary

July 2022

Project	Current Project Estimate	Project Scope	** Occupy On	Design Phase	Construction Progress	Project Status
East Mecklenburg High School (17)	\$ 10,405,411	This project will provide for the design, and construction of a new 30 classroom building.	August 2022	Complete	99 %	The construction manager for East Mecklenburg High School has reached substantial completion. Project is now in the closeout phase.
Garinger High School (17)	\$ 5,986,979	Project includes the design and construction for renovations of 300 building and a new 16 classroom building.	January 2023	Complete	71 %	The Garinger Addition and Renovation construction manager received temporary occupancy early July which released FF&E move in. The delayed secondary boiler has shipped and is expected in early August. The construction manager mobilized and began selective demolition of the 300 building.
Harding High School (17)	\$ 13,747,878	Renovation of the kitchen, cafeteria, existing gym (aux) and the addition of a new gym.	August 2020	Complete	100 %	Project is complete.
JT Williams (17)	\$ 17,432,600	Project includes building renovations to J.T. Williams Montessori magnet.	August 2024	Complete	11 %	The construction manager for JT Williams Secondary Montessori is progressing with preparations for paving and the fire line installation. The 100 Building renovations continue, and trade contractors have started the above ceiling rough ins. A 10-classroom modular is also being placed on site to provide swing space while renovations in the 200 Building take place and provide future classroom space.
Lansdowne Elementary School (17)	\$ 34,078,834	New 45-classroom school; replaces old school built in 1959 and relieve crowding at Elizabeth Lane ES.	August 2022	Complete	90 %	The Lansdowne Elementary School construction manager has moved into final finishes. The architect and engineers have been inspecting the site and completing a punch list. The final clean and floor wax has progressed through the building. Installation and programming of electronic systems is underway. The bus lot entrance road and final lift of asphalt is now complete. Principal and staff will move into the facility shortly.
Lincoln Heights Elementary School (17)	\$ 4,588,675	Repurpose and reopen as magnet school.	August 2023	Construction Documents	0 %	The Lincoln Heights Elementary project is scheduled to receive bids in August.

Monthly Project Status

2017 Bond Summary

July 2022

Project	Current Project Estimate	Project Scope	** Occupy On	Design Phase	Construction Progress	Project Status
Mint Hill Elementary School (17)	\$ 30,455,951	New 45-classroom elementary school; relieves crowding at Bain, Lebanon Road, Piney Grove.	August 2022	Complete	94 %	The Mint Hill Elementary School (fka Bain, Lebanon, Piney Grove Relief) construction manager continues to work on interior finishes. The project has received occupancy approval from Mecklenburg County Building Standards and substantial completion for the project will be issued. The architect and engineers have produced the projects punch list and trade contractors are working off issues. The parking lots have been paved and striped. The site is stabilized, and landscaping is installed. The teams continue to address supply chain issues impacting the delivery of required electrical panels and the generator and are providing substitutions and temporary solutions to allow the construction sequencing to continue. The road work continues and based on current product lead times the signal installation will occur in the winter 2023.
Montclair Elementary School (17)	\$ 28,209,390	New 45-classroom replacement facility replacing school built in 1958.	August 2020	Complete	100 %	Project is complete.
Mountain Island Lake Academy (17)	\$ 13,239,686	K-8 Phase 2 - New gymnasium and specialty classrooms.	August 2023	Complete	5 %	The Mountain Island Lake Academy Gym/Classroom Addition construction manager completed clearing and grubbing of the site along with installation s of the erosion control measures. Demolition of the existing staff lot was completed on schedule with preparations being made to install the temporary lot for the upcoming school year. The installation of the irrigation system for the field started late July.
New Elementary School (Elon, Hawk Ridge, Polo Relief) (17)	\$ 51,856,961	New 45-classroom elementary school to relieve Elon, Hawk Ridge, Polo.	August 2023	Complete	6 %	The New Elementary School (Elon, Hawk Ridge, Polo Relief) construction manager continued with grading operations. Foundations and other permittable work will commence once permits are approved and received from the authorities having jurisdiction. The Park and Recreation Center is in the bid and we anticipate approval in September.

Monthly Project Status

2017 Bond Summary

July 2022

Project	Current Project Estimate	Project Scope	** Occupy On	Design Phase	Construction Progress	Project Status
New Elementary School (Hidden Valley, JW Grier, Newell) (17)	\$ 43,579,387	New 45-classroom elementary school; relieves overcrowding at Hidden Valley, J.W. Grier, Newell.	August 2023	Complete	13 %	The New Elementary School (Hidden Valley, JW Grier, Newell Relief) is progressing with footings and underground raceways and conduits. The site contractor has started installing the underground storm piping. The construction team continues to work through supply chain material deliveries that includes electrical switch gear, roofing materials and storm water piping.
New Elementary School (Windsor, Winterfield, Idlewild Relief) (17)	\$ 45,297,022	New 45-classroom elementary school to relieve Windsor, Winterfield, and Idlewild ES.	August 2023	Complete	6 %	The New Elementary School (Windsor Park, Winterfield, Idlewild Relief) construction manager continues site grading. A section of the classroom building is on grade allowing some footings to progress. There are Duke Power underground primary lines feeding the adjacent property owners that will need to be relocated requiring executed easements. Getting these documents finalized and the lines relocated is holding up the completion of the remaining site work and potentially impacting the construction completion date. The storm water quality and erosion control ponds have been established. Gravel lots have been installed to accommodate construction parking.
New High School (South, Ardrey) (17)	\$ 158,786,358	New 100 classroom high school to relieve South Mecklenburg, Ardrey Kell and Myers Park HS.	August 2024	Complete	7 %	The New High School (South, Ardrey Relief) construction manager completed the phase one blasting and final graded the building pad. Site utilities continued in available areas. Foundations and other permittable work will commence once permits are approved and received from the authorities having jurisdiction.
North Academy of World Languages (17)	\$ 42,198,909	New 66 classroom K-8 Language Immersion facility located on the old J.M. Alexander Middle School site.	August 2021	Complete	100 %	Project is complete.

Monthly Project Status

2017 Bond Summary

July 2022

Project	Current Project Estimate	Project Scope	** Occupy On	Design Phase	Construction Progress	Project Status
Northwest School of the Arts (17)	\$ 20,467,000	Replace classroom building built in 1952 and build classroom addition that supports program.	August 2024	Pre-Schematic	0 %	The Northwest School of the Arts Additions project has progressed into the schematic design phase. Further investigations are necessary on the building addition location(s). The design team is also studying the existing school program of spaces for scope and construction coordination purposes. Initial scope includes a classroom building that replaces the existing visual arts classroom building.
Palisades High School (17)	\$ 108,908,793	New 100 classroom high school; relieves crowding at Olympic High School.	August 2022	Complete	98 %	The construction manager for the Palisades High School (fka New High School Olympic Relief) continued working toward finals for permanent certificate of occupancy and completing punch list items.
Shamrock Gardens Elementary School (17)	\$ 31,358,351	New 45-classroom replacement facility.	August 2022	Complete	99 %	The Shamrock Gardens Elementary School construction manager continued completing the punch list and final closeout documents.
Sharon Elementary School (17)	\$ 9,125,862	Add 16 classroom building and increase capacity of cafeteria.	August 2021	Complete	100 %	Project is complete.
South Academy of International Languages (fka New K-8 School (South) (17)	\$ 41,209,367	New 71 classroom K-8 Language Immersion facility located on the old Nations Ford Elementary School site.	August 2021	Complete	100 %	Project is complete.
South Mecklenburg High School (17)	\$ 15,622,927	Renovate/replace two classroom buildings built in 1958 to upgrade learning conditions.	January 2025	Pre-Schematic	0 %	The South Mecklenburg High School Addition project has progressed into the schematic design phase.
South Pine Academy (17)	\$ 30,822,550	New 45-classroom elementary school to relieve Nations Ford, Sterling, and Steele Creek.	August 2021	Complete	100 %	Project is complete.

Monthly Project Status

2017 Bond Summary

July 2022

Project	Current Project Estimate	Project Scope	** Occupy On	Design Phase	Construction Progress	Project Status
West Charlotte High School (17)	\$ 105,977,166	New 100 classroom school to replace current facility built in 1954.	August 2022	Complete	89 %	The trade contractors continue to work towards completion throughout the new West Charlotte High School facility. The project has reached substantial completion and the architect and engineers have completed the building walk through and punch list. The trade contractors are diligently working to complete open issues from the punch list. FF&E is well underway in the administration wing and classrooms. The principal and school staff have transitioned into the new building and are preparing for the August occupancy. The team continues to coordinate with school administration on the transition into the next phase of the project.
West Mecklenburg High School (17)	\$ 6,457,359	Provide new gymnasium, the existing gymnasium will become the auxilliary.	August 2021	Complete	100 %	Project is complete.

MONTHLY PROJECT PHOTOS

PROJECT PROGRESS PHOTOS



Palisades High School

PROJECT PROGRESS PHOTOS



Palisades High School

PROJECT PROGRESS PHOTOS



Palisades High School

PROJECT PROGRESS PHOTOS



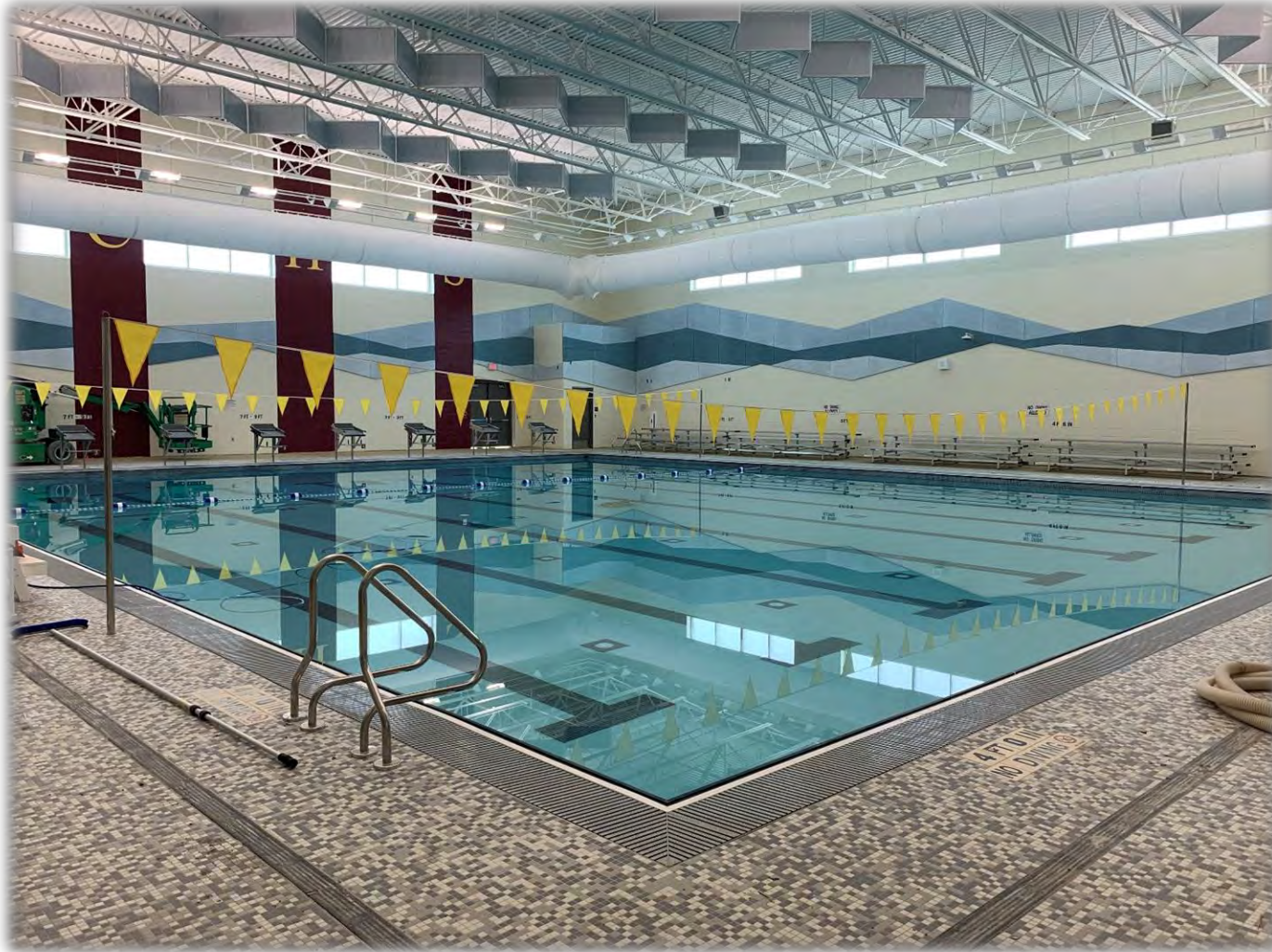
West Charlotte High School Replacement

PROJECT PROGRESS PHOTOS



West Charlotte High School Replacement

PROJECT PROGRESS PHOTOS



West Charlotte High School Replacement

PROJECT PROGRESS PHOTOS



Shamrock Gardens Elementary School

PROJECT PROGRESS PHOTOS



Shamrock Gardens Elementary School

PROJECT PROGRESS PHOTOS



Shamrock Gardens Elementary School



Lansdowne Elementary School

PROJECT PROGRESS PHOTOS



Lansdowne Elementary School

PROJECT PROGRESS PHOTOS



Lansdowne Elementary School

PROJECT PROGRESS PHOTOS



East Mecklenburg High School

PROJECT PROGRESS PHOTOS



East Mecklenburg High School

PROJECT PROGRESS PHOTOS



East Mecklenburg High School

PROJECT PROGRESS PHOTOS



Mint Hill Elementary School

PROJECT PROGRESS PHOTOS



Mint Hill Elementary School

PROJECT PROGRESS PHOTOS



Mint Hill Elementary School

PROJECT PROGRESS PHOTOS



Garinger High School

PROJECT PROGRESS PHOTOS



Garinger High School

PROJECT PROGRESS PHOTOS



Garinger High School

PROJECT PROGRESS PHOTOS



New ES Elon Park, Hawk Ridge, Polo Ridge

PROJECT PROGRESS PHOTOS



New ES Elon Park, Hawk Ridge, Polo Ridge

PROJECT PROGRESS PHOTOS



New HS Ardrey Kell, South Mecklenburg

PROJECT PROGRESS PHOTOS



New HS Ardrey Kell, South Mecklenburg

PROJECT PROGRESS PHOTOS



New HS Ardrey Kell, South Mecklenburg

PROJECT PROGRESS PHOTOS



New ES Windsor, Winterfield, Idlewild

PROJECT PROGRESS PHOTOS



New ES Windsor, Winterfield, Idlewild

PROJECT PROGRESS PHOTOS



New ES Windsor, Winterfield, Idlewild

PROJECT PROGRESS PHOTOS



New ES Hidden Valley, JW Grier, Newell

PROJECT PROGRESS PHOTOS



New ES Hidden Valley, JW Grier, Newell

PROJECT PROGRESS PHOTOS



New ES Hidden Valley, JW Grier, Newell

PROJECT PROGRESS PHOTOS



Mountain Island Lake Academy

PROJECT PROGRESS PHOTOS



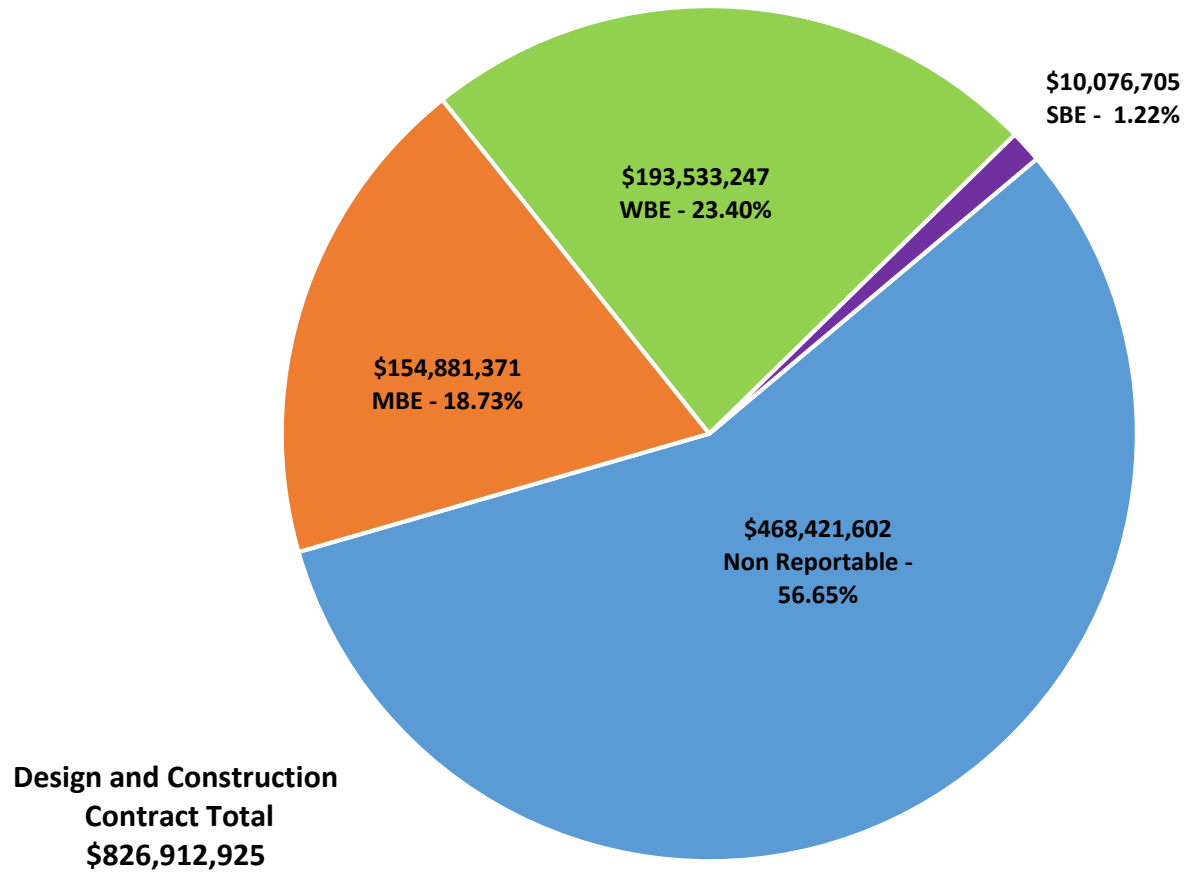
Mountain Island Lake Academy

MWSBE PARTICIPATION REPORT

Facility	Contract Amount	African American MBE\$	%	Other MBE \$	%	Total MBE \$	%	Other WBE \$	%	Other SBE \$	%	Total	%
<u>Briarwood Elementary School (17)</u>	\$28,723,186	\$4,020,515	14.00%	\$1,610,132	5.61%	\$5,630,647	19.60%	\$2,143,102	7.46%	\$182,300	0.63%	\$7,956,049	27.70%
<u>Career and Technology Education (17)</u>	\$5,966,589	\$525,859	8.81%	\$292,652	4.90%	\$818,511	13.72%	\$204,477	3.43%	\$63,430	1.06%	\$1,086,418	18.21%
<u>Charlotte-Mecklenburg Academy (17)</u>	\$17,035,852	\$198,536	1.17%	\$1,029,192	6.04%	\$1,227,728	7.21%	\$872,755	5.12%	\$13,200	0.08%	\$2,113,683	12.41%
<u>Collinswood Language Academy (17)</u>	\$38,527,740	\$649,287	1.69%	\$1,613,103	4.19%	\$2,262,390	5.87%	\$11,362,566	29.49%	\$9,328	0.02%	\$13,634,284	35.39%
<u>E.E. Waddell (17)</u>	\$2,002,837	\$0	0.00%	\$0	0.00%	\$0	0.00%	\$10,950	0.55%	\$0	0.00%	\$10,950	0.55%
<u>East Mecklenburg High School (17)</u>	\$12,676,283	\$603,811	4.76%	\$532,460	4.20%	\$1,136,271	8.96%	\$490,382	3.87%	\$681,075	5.37%	\$2,307,728	18.21%
<u>Garinger High School (17)</u>	\$4,240,502	\$228,140	5.38%	\$1,032,839	24.36%	\$1,260,979	29.74%	\$604,673	14.26%	\$499,000	11.77%	\$2,364,652	55.76%
<u>Harding High School (17)</u>	\$13,015,986	\$1,504,505	11.56%	\$310,356	2.38%	\$1,814,862	13.94%	\$3,846,831	29.55%	\$176	0.00%	\$5,661,869	43.50%
<u>JT Williams (17)</u>	\$15,272,031	\$2,000	0.01%	\$20,000	0.13%	\$22,000	0.14%	\$0	0.00%	\$51,800	0.34%	\$73,800	0.48%
<u>Lansdowne Elementary School (17)</u>	\$30,701,909	\$2,255,059	7.35%	\$498,305	1.62%	\$2,753,364	8.97%	\$2,339,232	7.62%	\$223,625	0.73%	\$5,316,221	17.32%
<u>Lincoln Heights Elementary School (17)</u>	\$454,706	\$92,274	20.29%	\$18,800	4.13%	\$111,074	24.43%	\$0	0.00%	\$74,503	16.38%	\$185,577	40.81%
<u>Mint Hill Elementary School (17)</u>	\$26,367,490	\$4,678,087	17.74%	\$18,825,991	71.40%	\$23,504,078	89.14%	\$1,240,643	4.71%	\$308,680	1.17%	\$25,053,401	95.02%
<u>Montclair Elementary School (17)</u>	\$26,093,784	\$3,617,952	13.87%	\$2,260,381	8.66%	\$5,878,333	22.53%	\$5,729,641	21.96%	\$518,632	1.99%	\$12,126,605	46.47%
<u>Mountain Island Lake Academy (17)</u>	\$12,499,991	\$0	0.00%	\$36,650	0.29%	\$36,650	0.29%	\$29,650	0.24%	\$15,300	0.12%	\$81,600	0.65%
<u>New Elementary School (Elon, Hawk)</u>	\$37,299,159	\$5,569,267	14.93%	\$2,413,545	6.47%	\$7,982,812	21.40%	\$7,990,684	21.42%	\$145,500	0.39%	\$16,118,996	43.22%
<u>New Elementary School (Hidden Vall)</u>	\$38,642,060	\$5,493,635	14.22%	\$4,211,754	10.90%	\$9,705,389	25.12%	\$2,237,544	5.79%	\$25,600	0.07%	\$11,968,533	30.97%
<u>New Elementary School (Windsor, W)</u>	\$41,201,074	\$8,807,507	21.38%	\$3,356,831	8.15%	\$12,164,338	29.52%	\$26,169,724	63.52%	\$304,149	0.74%	\$38,638,211	93.78%
<u>New High School (South, Ardrey) (17)</u>	\$132,653,416	\$1,867,976	1.41%	\$3,365,372	2.54%	\$5,233,348	3.95%	\$7,188,271	5.42%	\$3,913,152	2.95%	\$16,334,771	12.31%
<u>North Academy of World Languages (17)</u>	\$38,090,783	\$1,688,775	4.43%	\$1,575,863	4.14%	\$3,264,638	8.57%	\$3,471,693	9.11%	\$437,418	1.15%	\$7,173,748	18.83%
<u>Northwest School of the Arts (17)</u>	\$1,327,480	\$0	0.00%	\$0	0.00%	\$0	0.00%	\$0	0.00%	\$0	0.00%	\$0	0.00%
<u>Palisades High School (17)</u>	\$98,207,798	\$13,345,487	13.59%	\$5,874,324	5.98%	\$19,219,811	19.57%	\$8,478,293	8.63%	\$766,550	0.78%	\$28,464,654	28.98%
<u>Shamrock Gardens Elementary School (17)</u>	\$28,032,790	\$2,366,885	8.44%	\$1,469,007	5.24%	\$3,835,892	13.68%	\$23,207,193	82.79%	\$274,496	0.98%	\$27,317,581	97.45%
<u>Sharon Elementary School (17)</u>	\$8,525,796	\$326,844	3.83%	\$283,497	3.33%	\$610,341	7.16%	\$926,873	10.87%	\$217,984	2.56%	\$1,755,197	20.59%
<u>South Academy of International Languages (17)</u>	\$37,082,033	\$6,023,141	16.24%	\$2,431,071	6.56%	\$8,454,212	22.80%	\$10,755,611	29.00%	\$347,799	0.94%	\$19,557,622	52.74%

Facility	Contract Amount	African American MBE\$	%	Other MBE \$	%	Total MBE \$	%	Other WBE \$	%	Other SBE \$	%	Total	%
<u>South Mecklenburg High School (17)</u>	\$1,096,679	\$0	0.00%	\$0	0.00%	\$0	0.00%	\$0	0.00%	\$0	0.00%	\$0	0.00%
<u>South Pine Academy (17)</u>	\$26,205,173	\$916,165	3.50%	\$19,205,893	73.29%	\$20,122,058	76.79%	\$4,342,256	16.57%	\$237,754	0.91%	\$24,702,068	94.26%
<u>West Charlotte High School (17)</u>	\$95,160,407	\$13,318,476	14.00%	\$3,719,958	3.91%	\$17,038,434	17.90%	\$67,826,453	71.28%	\$481,479	0.51%	\$85,346,366	89.69%
<u>West Mecklenburg High School (17)</u>	\$9,809,391	\$283,809	2.89%	\$509,403	5.19%	\$793,212	8.09%	\$2,063,752	21.04%	\$283,775	2.89%	\$3,140,739	32.02%
Grandtotal	\$826,912,925	\$78,383,991	9.48%	\$76,497,379	9.25%	\$154,881,371	18.73%	\$193,533,247	23.40%	\$10,076,705	1.22%	\$358,491,323	43.35%

MWSBE Participation 2017 Bond Projects



PROJECT CONTROLS

CHARLOTTE-MECKLENBURG BOARD OF EDUCATION
2013 BOND SERIES-CAPITAL IMPROVEMENT PROGRAM
BUDGET STATUS REPORT

	Original Project Budget	Current Project Budget	Committed Amount	Approved Change Orders	Total Committed	Pending Commitments	To Be Committed	Prev Paid To Date	Paid To Date	Balance To Complete	Monthly Expenditure
	(A)	(B)	(C)	(D)	(E)=C+D	(F)	(G)=(B-E-F)	(H)	(I)	(J)=(B-I)	(K)=(I-H)
<u>A. REPLACEMENT & RENOVATIONS</u>											
1 Career & Technology Education Institutes Phase 1:	\$8,640,000	\$18,697,857	\$6,963,309	\$11,734,547	\$18,697,857	\$0	\$1	\$15,026,487	\$15,387,246	\$3,310,610	\$360,760
2 Davidson K-8 Conversion	\$9,500,000	\$13,461,149	\$2,131,151	\$11,329,998	\$13,461,149	\$0	\$0	\$13,461,149	\$13,461,149	\$0	\$0
3 J.M. Alexander Middle Replacement	\$30,672,000	\$29,845,539	\$4,502,518	\$25,343,021	\$29,845,539	\$0	\$0	\$29,845,539	\$29,845,539	\$0	\$0
4 Nations Ford Elementary Replacement	\$19,440,000	\$19,231,604	\$3,958,871	\$15,272,733	\$19,231,604	\$0	\$0	\$19,231,604	\$19,231,604	\$0	\$0
5 Northwest School of the Arts	\$12,420,000	\$12,868,718	\$2,047,917	\$10,820,801	\$12,868,718	\$0	\$0	\$12,868,719	\$12,868,719	\$0	\$0
6 Oakhurst STEAM Magnet Elementary/Starmount	\$5,940,000	\$5,407,812	\$3,471,397	\$1,936,415	\$5,407,812	\$0	\$0	\$5,407,812	\$5,407,812	\$0	\$0
7 Pre-K-8 Conversions Phase II: Ashley Park/ Bruns	\$24,732,000	\$19,700,807	\$4,167,671	\$15,533,138	\$19,700,809	\$0	\$0	\$19,700,807	\$19,700,807	\$0	\$0
8 Selwyn Elementary	\$2,592,000	\$4,624,831	\$744,799	\$3,880,032	\$4,624,831	\$0	\$0	\$4,624,831	\$4,624,831	\$0	\$0
9 Statesville Road Elementary	\$20,340,000	\$20,648,509	\$5,081,473	\$15,567,037	\$20,648,509	\$0	\$0	\$20,648,509	\$20,648,509	\$0	\$0
10 West Mecklenburg HS	\$0	\$3,993,543	\$3,993,543	\$0	\$3,993,543	\$0	\$0	\$3,993,543	\$3,993,543	\$0	\$0
Total Replacement & Renovations	\$134,276,000	\$148,480,367	\$37,062,648	\$111,417,722	\$148,480,370	\$0	\$2	\$144,808,999	\$145,169,758	\$3,310,608	\$360,760
<u>B. RESPONSE TO ENROLLMENT GROWTH</u>											
1 East Mecklenburg High Addition	\$12,744,000	\$12,083,804	\$4,465,200	\$7,618,603	\$12,083,803	\$0	\$0	\$12,083,803	\$12,083,803	\$0	\$0
2 Myers Park High Addition	\$22,248,000	\$11,040,942	\$1,207,493	\$9,833,448	\$11,040,942	\$0	\$0	\$11,040,941	\$11,040,941	\$0	\$0
3 Northridge Middle Addition	\$6,448,000	\$6,366,170	\$2,114,306	\$4,251,865	\$6,366,171	\$0	\$0	\$6,366,171	\$6,366,171	\$0	\$0
4 Olympic High Addition/Renovation	\$8,964,000	\$8,947,310	\$2,002,694	\$6,944,615	\$8,947,310	\$0	\$0	\$8,947,310	\$8,947,310	\$0	\$0
5 South Mecklenburg High Addition	\$18,360,000	\$16,307,355	\$2,922,282	\$13,385,073	\$16,307,355	\$0	\$0	\$16,307,355	\$16,307,355	\$0	\$0
6 Charlotte East Language Academy (FKA -New Lang	\$30,376,000	\$31,387,929	\$5,740,182	\$25,647,747	\$31,387,929	\$0	\$0	\$31,387,929	\$31,387,929	\$0	\$0
7 Rea Farms STEAM Academy	\$31,376,000	\$40,476,000	\$9,062,022	\$30,187,065	\$39,249,087	(\$5,460)	\$1,232,373	\$38,898,906	\$38,898,906	\$1,577,094	\$0
8 Renaissance West STEAM Academy (FKA New Pre-	\$30,376,000	\$31,698,952	\$5,667,388	\$26,031,564	\$31,698,952	\$0	\$0	\$31,698,952	\$31,698,952	\$0	\$0
9 New High School - South Meck/Ardrey Kell Relief *	\$0	\$9,278,699	\$9,278,699	\$0	\$9,278,699	\$0	\$0	\$9,278,699	\$9,278,699	\$0	\$0
Total Response to Enrollment Growth	\$160,892,000	\$167,587,161	\$42,460,267	\$123,899,981	\$166,360,248	(\$5,460)	\$1,232,373	\$166,010,066	\$166,010,066	\$1,577,095	\$0
<u>C. CONTINGENCY</u>											
	\$0	\$0	\$0	\$0	\$0	\$0	\$0	\$0	\$0	\$0	\$0
Total Contingency	\$0	\$0	\$0	\$0	\$0	\$0	\$0	\$0	\$0	\$0	\$0
TOTAL LOCAL BOND PROGRAM	\$295,168,000	\$316,067,527	\$79,522,915	\$235,317,703	\$314,840,618	(\$5,460)	\$1,232,375	\$310,819,065	\$311,179,824	\$4,887,703	\$360,760

Original project estimated costs approved by the Board Of Education on July 23, 2013 and approved by the voters of Mecklenburg County on November 5, 2013.

Note: Mecklenburg County's appropriated interest from COPS to increase funding for the 2013 Bond Program.

CHARLOTTE-MECKLENBURG BOARD OF EDUCATION
2017 BOND SERIES-CAPITAL IMPROVEMENT PROGRAM
BUDGET STATUS REPORT

	Original Project Budget	Current Project Budget	Committed Amount	Approved Change Orders	Total Committed	Pending Commitments	To Be Committed	Prev Paid To Date	Paid To Date	Balance To Complete	Monthly Expenditure
	(A)	(B)	(C)	(D)	(E)=C+D	(F)	(G)=(B-E-F)	(H)	(I)	(J)=(B-I)	(K)=(I-H)
<u>A. REPLACEMENT & RENOVATIONS</u>											
1 Briarwood Elementary *	\$29,091,619	\$31,762,730	\$4,780,835	\$26,609,642	\$31,390,476	\$0	\$372,254	\$31,022,030	\$31,094,280	\$668,450	\$72,250
2 Bruns Academy Replacement	\$34,207,808	\$43,284,927	\$3,757,888	\$218,050	\$3,975,938	\$0	\$39,308,989	\$719,616	\$729,883	\$42,555,044	\$10,266
3 Career & Technology Education Upgrades	\$10,101,734	\$10,159,765	\$2,293,944	\$4,099,152	\$6,393,096	\$77,334	\$3,689,335	\$5,358,500	\$5,387,208	\$4,772,557	\$28,708
4 Collinswood K-8 *	\$44,172,540	\$41,422,560	\$4,927,491	\$36,495,069	\$41,422,560	\$0	\$0	\$41,392,349	\$41,401,384	\$21,176	\$9,035
5 East Mecklenburg HS	\$12,771,594	\$10,405,411	(\$1,567,280)	\$11,881,417	\$10,314,136	\$20,500	\$70,775	\$9,216,920	\$9,550,220	\$855,191	\$333,300
6 Garinger HS	\$13,936,979	\$5,986,979	\$1,633,812	\$3,475,359	\$5,109,171	\$51,750	\$826,058	\$2,749,317	\$2,831,752	\$3,155,227	\$82,435
7 Harding University High *	\$18,330,263	\$13,747,878	\$2,045,267	\$11,702,610	\$13,747,877	\$0	\$0	\$13,747,877	\$13,747,877	\$0	\$0
8 Charlotte-Mecklenburg Academy (FKA -EC Specialty	\$18,957,960	\$17,699,220	\$2,175,504	\$15,523,717	\$17,699,220	\$0	\$0	\$17,699,220	\$17,699,220	\$0	\$0
9 Lansdowne Elementary	\$29,391,270	\$34,078,834	\$4,178,262	\$29,467,186	\$33,645,448	\$106,542	\$326,845	\$25,811,143	\$26,879,873	\$7,198,961	\$1,068,730
10 Lincoln Heights Elementary	\$3,740,478	\$4,588,675	\$578,710	\$49,054	\$627,764	\$0	\$3,960,911	\$402,042	\$402,042	\$4,186,633	\$0
11 Montclair Elementary Replacement *	\$28,559,390	\$28,209,390	\$2,426,761	\$25,782,629	\$28,209,390	\$0	\$0	\$28,200,634	\$28,200,634	\$8,756	\$0
12 Mountain Island k-8	\$9,218,439	\$13,239,686	\$1,582,067	\$11,344,864	\$12,926,931	\$10,000	\$302,755	\$633,318	\$1,076,335	\$12,163,351	\$443,018
13 Northwest School of the Arts	\$17,632,202	\$20,467,000	\$2,068,982	\$117,644	\$2,186,626	\$0	\$18,280,374	\$63,090	\$63,090	\$20,403,910	\$0
14 Shamrock Gardens Elementary *	\$29,890,351	\$31,358,351	\$3,744,664	\$27,153,983	\$30,898,647	\$20,100	\$439,604	\$26,337,513	\$27,389,458	\$3,968,893	\$1,051,945
15 Sharon Elementary	\$7,706,528	\$9,125,862	\$1,443,456	\$7,666,984	\$9,110,441	\$0	\$15,421	\$9,047,784	\$9,047,784	\$78,078	\$0
16 South Mecklenburg HS	\$13,352,143	\$15,622,927	\$1,666,317	\$94,238	\$1,760,555	\$0	\$13,862,372	\$35,209	\$76,834	\$15,546,093	\$41,625
17 E.E. Waddell Magnet HS	\$4,571,709	\$5,137,367	\$2,172,927	\$35,700	\$2,208,627	\$0	\$2,928,740	\$169,118	\$503,049	\$4,634,318	\$333,931
18 West Charlotte HS Replacement	\$109,977,166	\$105,977,166	\$12,332,928	\$91,488,713	\$103,821,641	\$129,128	\$2,026,397	\$81,893,961	\$84,141,366	\$21,835,800	\$2,247,405
19 West Mecklenburg HS	\$11,065,440	\$6,457,359	(\$2,367,345)	\$8,670,708	\$6,303,362	\$0	\$153,997	\$6,260,309	\$6,260,309	\$197,050	\$0
20 John Taylor Williams	\$13,964,339	\$17,432,600	\$3,199,166	\$12,710,703	\$15,909,869	\$0	\$1,522,731	\$793,263	\$865,807	\$16,566,793	\$72,545
Total Replacement & Renovations	\$460,639,952	\$466,164,687	\$53,074,354	\$324,587,421	\$377,661,775	\$415,354	\$88,087,560	\$301,553,212	\$307,348,405	\$158,816,282	\$5,795,193
<u>B. RESPONSE TO ENROLLMENT GROWTH</u>											
1 South Academy of International Languages	\$45,359,367	\$41,209,367	\$6,046,436	\$35,050,079	\$41,096,515	\$0	\$112,852	\$40,564,377	\$40,567,415	\$641,952	\$3,038
2 North Academy of World Languages (FKA - New K-8	\$45,359,367	\$42,198,909	\$6,022,055	\$35,999,788	\$42,021,844	\$0	\$177,065	\$41,651,649	\$41,651,649	\$547,259	\$0
3 South Pine Academy (FKA - New ES Nations Ford, S	\$29,173,829	\$30,822,550	\$6,793,874	\$24,015,688	\$30,809,562	\$0	\$12,987	\$30,449,337	\$30,462,608	\$359,942	\$13,271
4 Mint Hill Elementary School	\$29,988,332	\$30,455,951	\$3,559,709	\$26,621,982	\$30,181,692	\$29,786	\$244,474	\$22,241,802	\$23,614,215	\$6,841,736	\$1,372,413
5 New Elementary School - Windsor Park Relief *	\$30,422,230	\$45,297,022	\$11,088,143	\$31,659,394	\$42,747,537	\$5,000	\$2,544,485	\$5,340,237	\$5,378,173	\$39,918,849	\$37,936
6 New Elementary School - Elon/Hawk Ridge Relief *	\$30,426,712	\$51,856,962	\$14,233,420	\$35,172,026	\$49,405,446	\$0	\$2,451,515	\$13,664,126	\$15,364,627	\$36,492,334	\$1,700,501
7 New Elementary School - Hidden Valley Relief	\$30,518,345	\$43,579,387	\$4,519,480	\$36,548,935	\$41,068,415	\$0	\$2,510,972	\$3,704,275	\$5,782,994	\$37,796,393	\$2,078,719
8 Palisades High School	\$109,908,793	\$108,908,793	\$11,334,481	\$97,051,295	\$108,385,776	\$65,806	\$457,211	\$94,743,092	\$95,881,668	\$13,027,125	\$1,138,576
9 New High School - South Meck/Ardrey Kell Relief *	\$110,287,621	\$158,786,358	\$12,439,261	\$125,624,701	\$138,063,962	(\$27,027)	\$20,749,423	\$11,903,807	\$15,258,033	\$143,528,325	\$3,354,225
Total Response to Enrollment Growth	\$461,444,596	\$553,115,298	\$76,036,860	\$447,743,890	\$523,780,749	\$73,565	\$29,260,984	\$264,262,704	\$273,961,382	\$279,153,915	\$9,698,679
<u>C. CONTINGENCY</u>											
	\$0	\$0	\$0	\$0	\$0	\$0	\$0	\$0	\$0	\$0	\$0
Total Contingency	\$0	\$0	\$0	\$0	\$0	\$0	\$0	\$0	\$0	\$0	\$0

CHARLOTTE-MECKLENBURG BOARD OF EDUCATION
2017 BOND SERIES-CAPITAL IMPROVEMENT PROGRAM
BUDGET STATUS REPORT

	Original Project Budget	Current Project Budget	Committed Amount	Approved Change Orders	Total Committed	Pending Commitments	To Be Committed	Prev Paid To Date	Paid To Date	Balance To Complete	Monthly Expenditure
	(A)	(B)	(C)	(D)	(E)=C+D	(F)	(G)=(B-E-F)	(H)	(I)	(J)=(B-I)	(K)=(I-H)
TOTAL LOCAL BOND PROGRAM	\$922,084,548	\$1,019,279,985	\$129,111,213	\$772,331,311	\$901,442,524	\$488,918	\$117,348,544	\$565,815,916	\$581,309,788	\$437,970,198	\$15,493,872

Original project estimated costs approved by the Board Of Education on July 25, 2017 approved by the voters of Mecklenburg County on November 7, 2017.

*Project included in \$33.2M early funding approved by Board Of Education on August 9, 2016 and Mecklenburg Board of County Commissioners on September 6, 2016. On February 19, 2019 an additional \$8M was approved for New Elementary School - Elon/Hawk Ridge Relief site.

*Current Budget includes an additional \$89.2M to fund increase land and construction costs. The additional funds were approved by the Board of County Commissioners on June 16, 2020.

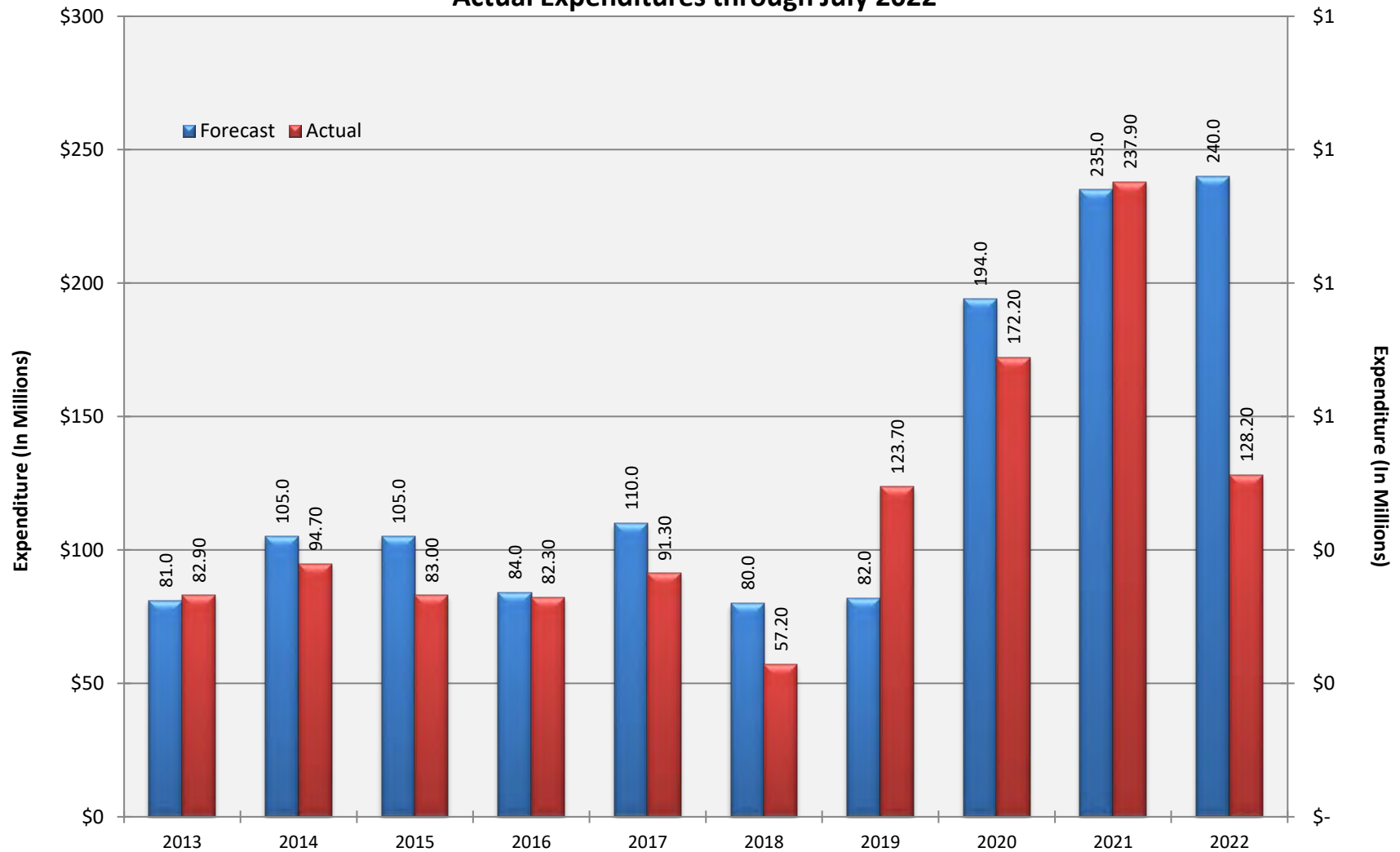
Charlotte-Mecklenburg Board of Education
Approved Construction or Repair Change Orders*
Reporting Period: July 2022

Funding Source	Project Name	Contractor	Description	Change Order Amount	Revised Contract Value
2017 Bond	Lansdowne Elementary School (17)	Edifice, Inc.	Misc. Building & Site Changes	\$0.00	\$28,286,541.00

* Not previously presented to the Board of Education for Approval (less than \$90,000)

10 YEAR EXPENDITURE SUMMARY

Forecast Expenditure versus
Actual Expenditures through July 2022



GLOSSARY

Glossary

- **Project Management** – This section includes updates from our project managers and describes the currently active construction projects. This includes from Board of Education award thru final completion.
- **Design and Bidding** – This section contains updates from our design managers on the projects currently in the design phase. This phase from design award to Board of Education award of construction.
- **Controls** – Section includes misc. updates from controls group including expenditures, related Board of Education awards during the reporting period, cash flow information. This section covers all projects from approved bond through final expenditures and bond close with the county.
- **MWSBE** – Contains updates from the MWSBE Director and team, including current activity and summaries of the participation by MWSBE providers on our program.
- **Bond Progress Summary** – Provides a summary of bond financials including bond value, committed/pending amounts, paid to date, expended this month.
- **Project Procurement Dates** - Next 90 Days major project bid activity.
- **Mobile Swing Space Utilization** – Includes a summary of program related swing space currently in use and the schedule of use.
- **Bond Summary Schedule** – Current program summary schedule including planned design, construction and FF&E. These activities are fed from detailed schedules and are fine-tuned as project information is available.
- **Project Contractor Teams**; Provides summary of turnover dates for completed/closed projects since 2010 including architects/designers and contractors.
- **School Site Location Maps** – General location of bond projects (2017) by type.
- **Project Status Report** – This section of the report provides a summary of the bond project scope, current estimate (all sources), planned occupancy/actual occupancy date. It also provides a current status of the design phase, construction progress and a brief update. The report currently includes 2013 and 2017 bond projects that have or will be completed after to August 2016.
- **MWSBE Participation Report** – The MWSBE report provides a summary of the participation on the 2013 & 2017 Bond funded projects.
- **Project Progress Photos** – Includes photos of active construction projects.
- **Budget Summary Reports** – These reports are by funding source and summarize financial activity to date on the projects. This includes original and current project estimates, committed values, amounts paid to date, balances and monthly expenditures.
- **Change Orders < \$90,000** – This month's approved construction or repair change orders < \$90,000.
- **Expenditure Summary** – Provides a summary of Bond Expenditures by calendar year.