

# Capital Improvement Program

Monthly Bond Report  
June 2022



New Elementary School Elon, Hawk Ridge, Polo Ridge Relief



## **CAPITAL PROGRAM SERVICES** Capital Improvement Program

**JUNE 2022**  
**MONTHLY BOND REPORT**

### **PROGRAM OVERVIEW**

- Project Management
- Design and Bidding
- Controls
- MWSBE
- Bond Progress Summary
- Project Procurement - Next 90 Days
- Swing Space Utilization
- Bond Summary Schedule
- Project Contractor Teams; Projects in Design/Construction and Substantially Completed/Closed
- School Site Location Maps
  - Elementary Schools
  - Middle Schools
  - High Schools & Specialty Schools

### **PROJECT STATUS REPORT**

### **MWSBE PARTICIPATION REPORT**

### **PROJECT PROGRESS PHOTOS**

### **PROJECT CONTROLS**

- Budget Summary Reports
  - 2013 Bond Series
  - 2017 Bond Series
- Change Orders < \$90,000
- Expenditure Summary

### **GLOSSARY**

# PROGRAM OVERVIEW

---

## PROJECT MANAGEMENT

The following is a summary of the activity on the bond funded projects in construction during the month of June.

The construction manager for **East Mecklenburg High School** has reached substantial completion. Project is now in the closeout phase. The new classroom wing will be occupied in August 2022.

The contractor for **E.E. Waddell** has started construction renovations. The work will be completed in phases; one of the first areas will be the Media Center with work on the new Maker Space. They are also working in the science wing adding emergency showers and eye wash stations. The classroom lighting is being upgraded with LED fixtures. The project is scheduled for completion spring 2023.

The **Garinger Addition and Renovation** construction manager has completed the CTE building interior finishes and is finalizing the installation of rated assemblies at the boiler flue and elevator. The installation and programming of the cameras and security devices continues. The delayed secondary boiler and emergency response repeater equipment is currently scheduled for delivery and installation in July. The 16-classroom addition will be occupied in August 2022. The 300 Building renovations have started and are scheduled to complete January 2023.

The construction manager for **JT Williams Secondary Montessori** issued the Notice to Proceed. Contractors will mobilize in July. Work will begin with the 100 Building and site work. A 10-classroom modular is also being placed onsite to provide swing space while renovations in the 200 Building take place and to provide future classroom space.

The **Lansdowne Elementary School** construction manager continues to work on interior finishes. The fire alarm and intercom systems are being finalized for inspections. The mechanical systems are also being tested and commissioned. The final cleaner has started in the classrooms and will work throughout. The painter is applying the final coat to corridor walls. The staff/visitor parking lot has been paved and work has started on the new parent entrance loop. The mobile classroom units have been moved which allows for the bus lot entrance drive to be paved. Occupancy of the replacement school is scheduled for August 2022. Upon completion of the new building demolition and remaining site work will commence and be completed in 2023.

The **Mint Hill Elementary School** (*fka Bain, Lebanon, Piney Grove Relief*) construction manager continues work on interior finishes. Life safety systems are being finalized and inspected. The VCT is now complete and final clean has started in the classrooms. The painter is working towards final coat and completing finish trim. Kitchen equipment has been delivered and set. Site work including playgrounds is progressing and sod is being installed. The front staff lot is scheduled to be paved and striped in July. The teams continue to address supply chain issues impacting the delivery of required electrical panels and the generator and are providing substitutions and temporary solutions to allow the construction sequencing to continue. The road work continues and based on current product lead times the signal installation will occur in the winter 2023. The project is scheduled for occupancy in August 2022.

The **Mountain Island Lake Academy Gym/Classroom Addition** construction manager mobilized on the site, installed the temporary site fencing and began removal of the existing parking lot islands. The four classroom and gym addition is scheduled for occupancy August 2023.

The **New Elementary School (Elon, Hawk Ridge, Polo Relief)** construction manager continued with grading operations. The aggregate pier contractor mobilized and installed all piers. Foundations and other permissible work will commence once permits are approved and received from the authorities having jurisdiction. The new 45-classroom elementary school will be located across from the Ardrey Kell High School and is scheduled for occupancy August 2023.

The **New Elementary School (Hidden Valley, JW Grier, Newell Relief)** construction manager has completed initial grading activities and has the building pad on grade. Building footings to follow. Site grading will continue to allow parking and drives to meet established grades. The construction team continues to work through supply chain material deliveries that includes electrical switch gear, roofing materials and storm water piping. This new 45-classroom school will be located next to Northridge Middle School and is scheduled for occupancy August 2023.

The **New Elementary School (Windsor Park, Winterfield, Idlewild Relief)** construction manager continues site grading. The storm water quality and erosion control ponds have been established. The construction trailer has been delivered. Gravel lots have been installed to accommodate construction parking. This new 45- classroom school is scheduled for occupancy August 2023.

The **New High School (South, Ardrey Relief)** construction manager completed the installation of the erosion control devices. Grading operations continued throughout the site along with starting rock blasting operations. The new 100-classroom relief high school is scheduled for occupancy August 2024.

The construction manager for the **Palisades High School** (*fka New High School Olympic Relief*) continued working toward finals for permanent certificate of occupancy and completing punch list items. The site work continued with installation of the permanent detention pond liner and final grading. FF&E delivery and installations continue. The 100-classroom relief high school will be occupied in August 2022.

The **Shamrock Gardens Elementary School** construction manager continued completing the punch list and final closeout documents. FF&E move in continued through June with an expected completion the end of July. The 45-classroom replacement building will be occupied in August 2022.

The trade contractors continue to work towards completion throughout the **West Charlotte High School** facility. The project has reached substantial completion. The architect and engineers are finalizing their punch list. Some finish work remains and trade contractors are focused on preparing areas for school occupancy. The FF&E is well underway in the Administration wing and classrooms. The team continues to work with school administration on the transition from Phase 1 to Phase 2 construction. The school will be occupied in August 2022. Once the new school is occupied the demolition of the existing school and final site work will take place with final project completion in August 2023.

## DESIGN AND BIDDING

The following is a summary of the activity on the bond funded projects in design and bidding phase during the month of June.

The **Bruns Avenue Elementary Replacement** project is scheduled to receive the design development submittal in July. The majority of CMS due diligence activities have concluded; additional investigations with the existing sanitary sewer are underway. Design discussions with CDOT and Parks & Recreation continue to progress. This new 45-classroom school facility is being designed with a full size gym and associated areas in coordination with Charlotte-Mecklenburg Park & Recreation. The school is scheduled to start construction in spring of 2023 be completed August 2024.

The **Lincoln Heights Elementary** project's design is being finalized and is scheduled to bid in August. The renovation/modifications to the building will be phased and are scheduled to be completed by summer of 2023.

The **Northwest School of the Arts Additions** pre-schematic design submittal was submitted and is under review for scope comments. Initial scope includes a classroom building that replaces the existing visual arts classroom building.

The architect for the **South Mecklenburg High School Addition** has submitted the pre-schematic design submittal and it is under review for scope comments. Initial scope includes a classroom building addition of 21 classrooms.

## CONTROLS

Expenditures for the month of June were \$20.7M. This brings our fiscal year to date total to \$223.6M against the 2022 fiscal year cash flow projection of \$225M. The Controls team continues procurement of goods and services necessary for the turnover of six projects including two high schools. The Controls team also continues the process of reconciling and closeout of completed 2013 and 2017 bond projects continues. Available funding is being accumulated to address potential supply chain and increased construction costs.

Board of Education approval was received on June 14, 2022 for the construction phase for the J.T. Williams renovation project.

The Controls team continues to submit notices of potential changes at school sites so senior staff can adequately evaluate issues. Additionally, the Controls team continues the processing of contracts, invoices, preparing notices of potential change, change orders, pay applications, and check requests for projects under construction. Captured construction cost data is used to prepare financial reports such as detailed cost reports, budget summaries, reconciliation to CMS books, revisions to and updated cash flows and complete special financial requests by CMS and Mecklenburg County. This process, along with data compilation and management, allows senior staff to provide the proper guidance/direction and accurate information to the program stakeholders.

## MWSBE

As of June 2022 the overall MWSBE utilization percentage related to design and construction of the 2017 bond projects is 44.23% which includes 19.01% participation by minority contractors, 24% by women contractors and 1.23% participation by small business contractors. This accounts for more than \$365 million of utilization by Minority, Women and Small Business Contractors.

The Diversity & Inclusion Office of Charlotte-Mecklenburg Schools continued to conduct several individual virtual orientations with new MWSBE contractors and prime contractors. In addition, team members also attended/hosted the following outreach sessions/pre-bid meetings and/or workforce development opportunities:

### Outreach Sessions:

- MMCA Steel Toe Boot Awards
- Mt. Island Lake Academy Pre-Construction Conference
- American Contract Compliance Association National Training Institute Planning meetings

### Commendations:

- Congratulations to the following MMCS Steel Toe Boot Award Honorees: Subcontractor of the Year: UTD Technology, Taylor Interiors, LLC and Golden Cleaning; General Contractor of the Year: Harmon Construction and McFarland Construction. Award winners were selected for sound business strategies while driving economic development in the Charlotte-Mecklenburg region.

### Good-Faith Efforts:

- Reviewed Edifice pre-qualification process for Bruns Elementary replacement.

## Workforce Development:

- CMS Office of Diversity & Inclusion and Capital Program Services will host one (1) CMS student summer interns through the Mayor's Youth Employment Program (MYEP). The intern will participate in virtual project management/design meetings, learn architecture/engineering related terms, jobsite safety awareness, design specifications/submittal review process, interview career industry experts, participate in on-line virtual architecture/engineering related simulation courses and complete a project to apply their learnings. The student's college/career related interest will inform all work-related activities.

Over the next month, team members will continue to work with contractors interested in bidding on the upcoming school projects utilizing various virtual tools to communicate. Contractors are encouraged to review bid advertisements in Charlotte Observer and register as a vendor on the North Carolina Interactive Purchasing System for notification of the various opportunities.

## BOND PROGRESS SUMMARY As of June 2022

Funding Source and Value		Amount Committed/Pending	Amount Paid to Date	Amount Expended This Period
2013 Bond	\$316,067,527	\$314,835,158	\$310,819,065	\$599,385
2017 Bond	\$1,019,279,985	\$901,541,931	\$565,815,916	\$20,128,223
<b>Grand Total</b>	<b>\$1,335,347,512</b>	\$1,216,377,089	\$876,634,981	\$20,727,608



---

## UPCOMING MAJOR CONSTRUCTION PROCUREMENT DATES *Three Month Look Ahead*

### **School Name**

**Lincoln Heights**

### **Bid Dates\***

August 2022

*\* NOTE: Work In Progress...Dates Subject to Change.*

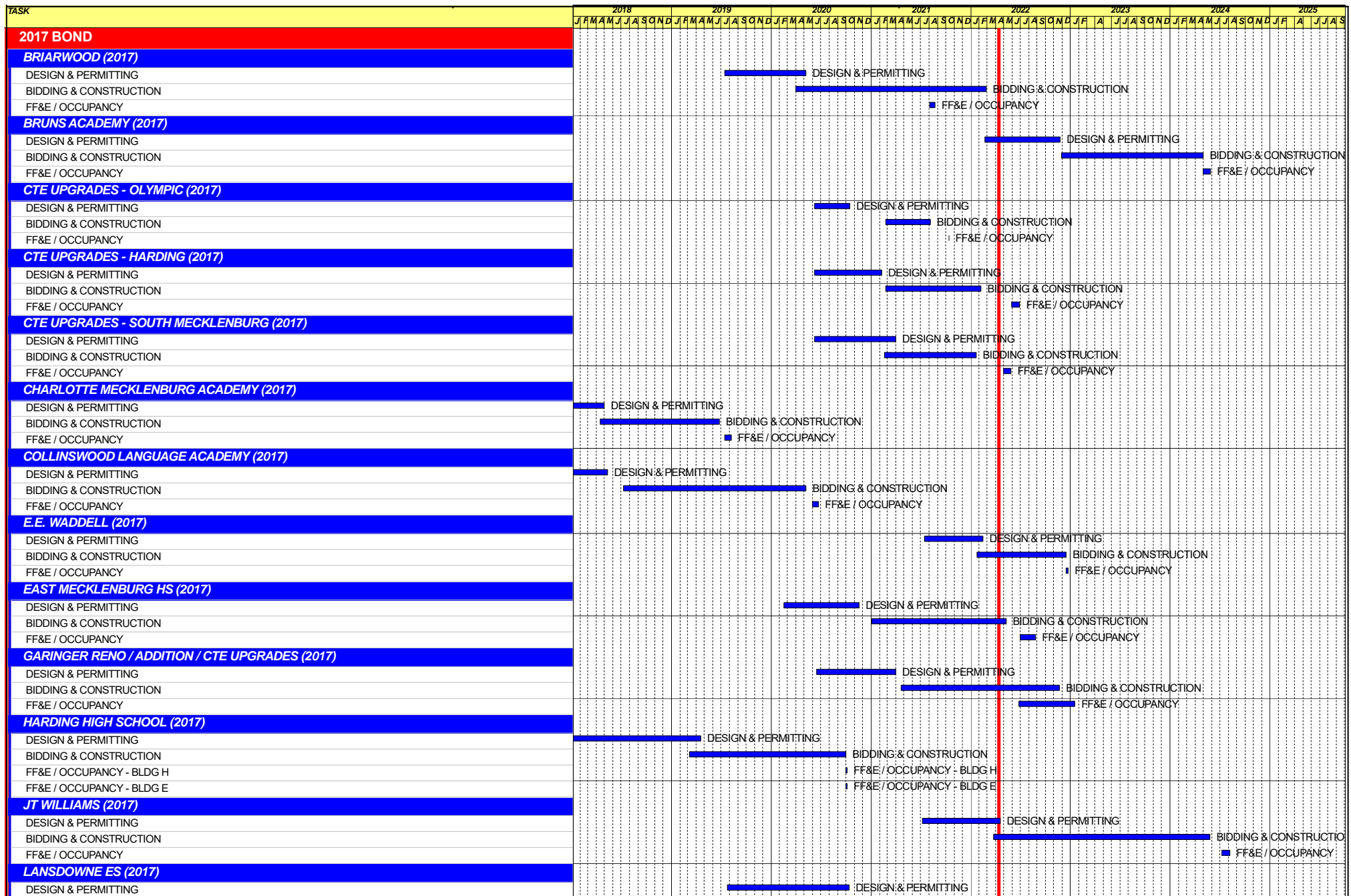
## SWING SPACE UTILIZATION

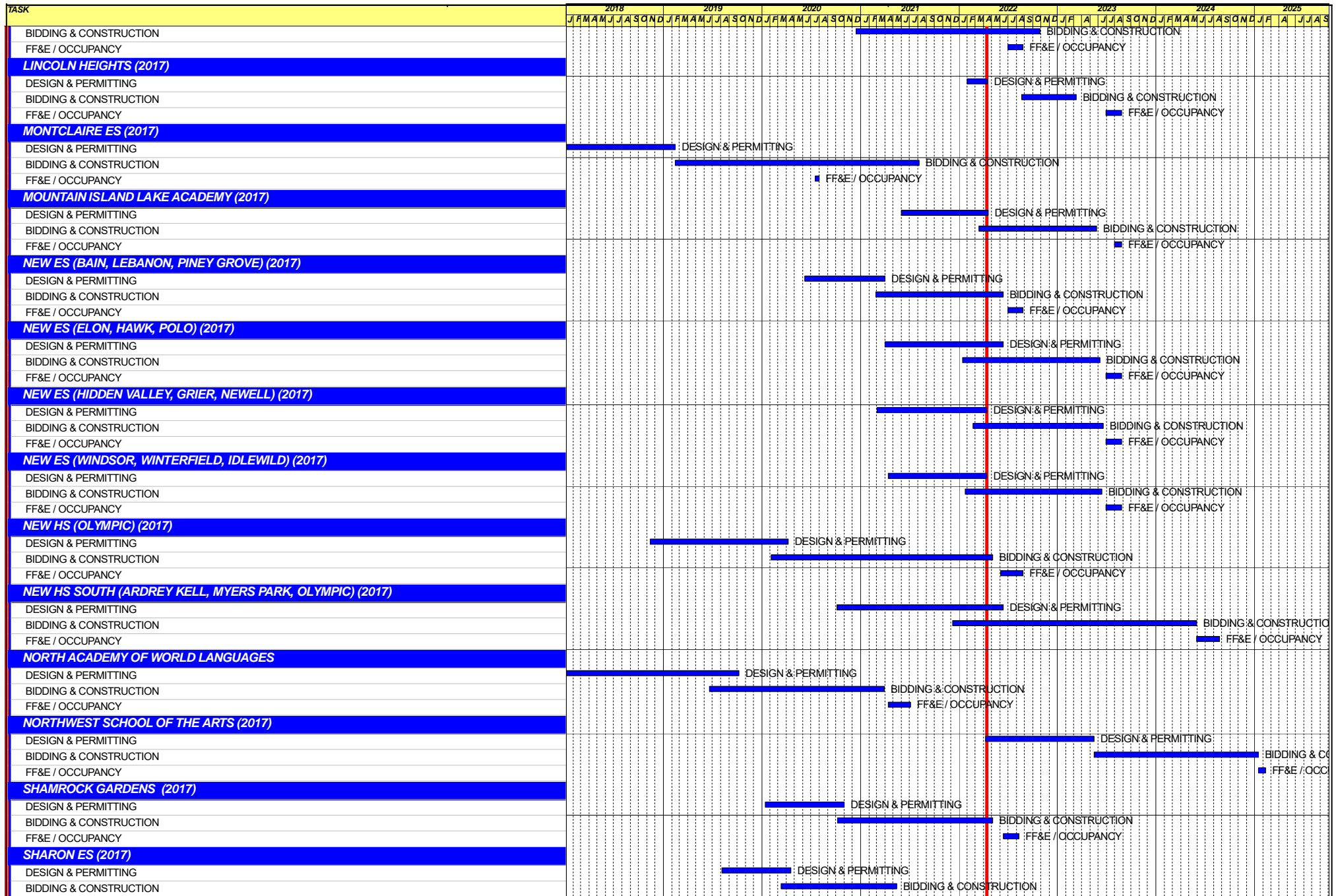
Creating a temporary space for students and staff to occupy during construction on a school’s campus has proven to be beneficial to the project’s schedule and cost and overall safety and efficiency of school operations. When the renovation or expansion of a facility is performed and the facility must remain functionally operational, there are benefits to the owner in using swing space.

We have successfully utilized both onsite and offsite swings. The most desirable swings are “offsite” ones. Onsite swing using mobiles or modulars, likewise has been successfully used. The following is a summary of current swing options planned or in use.

<u>School</u>	<u>No. of Mobiles/Relocation Site</u>	<u>Status (From – To)</u>
---------------	---------------------------------------	---------------------------

None at this time		
-------------------	--	--







Capital Improvements Program  
***Projects in Design or Under Construction***

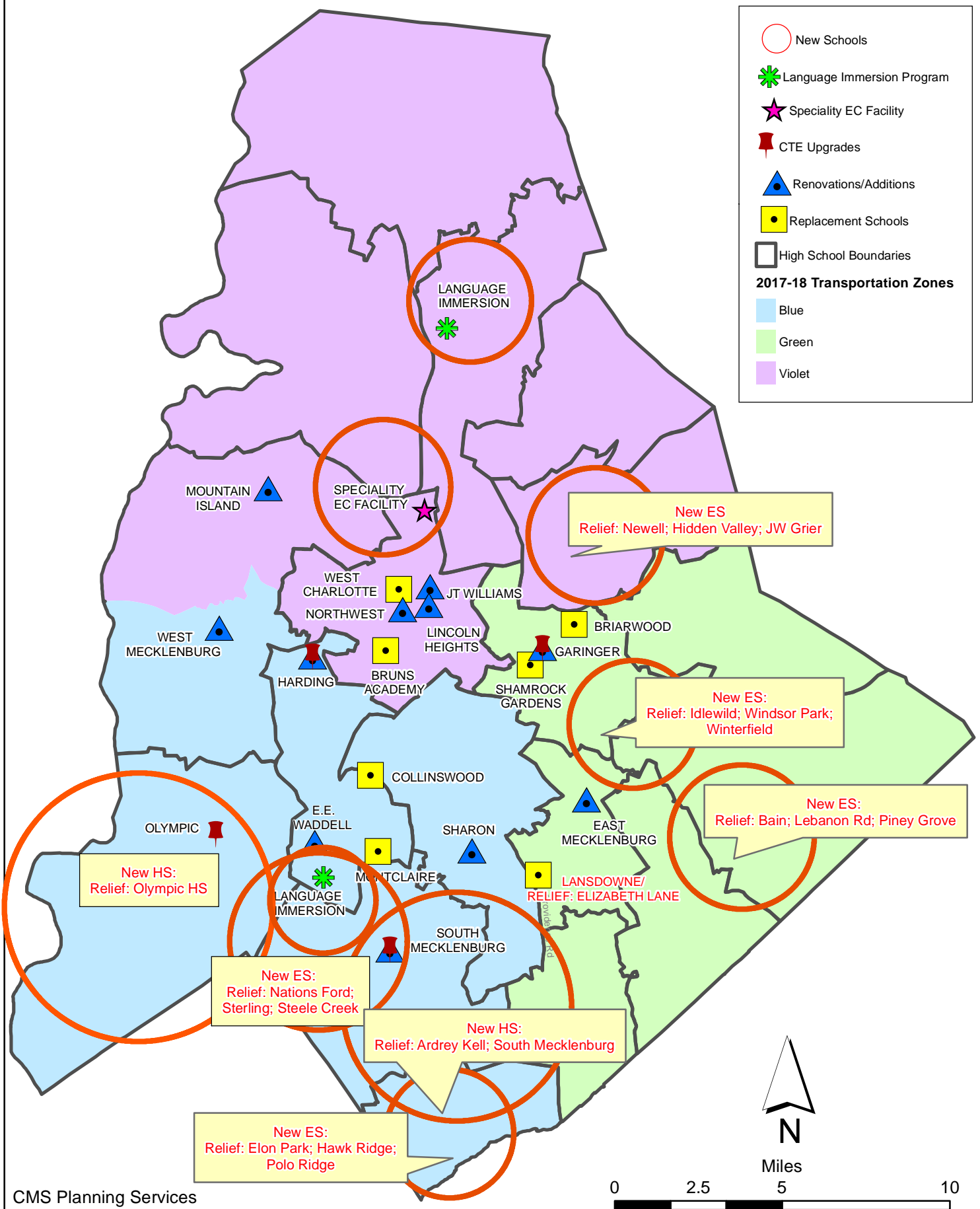
School	Architect	General Contractor/CM
<b>Projects In Design</b>		
Lincoln Heights Repurpose (17)	Neighboring Concepts	TBD
New Bruns Avenue ES (17)	ADW	Edifice, Inc.
Northwest School of the Arts Addition (17)	LS3P	Balfour Beatty
South Mecklenburg High School Addition (17)	Morris Berg	Balfour Beatty
<b>Projects in Bid/Award/Construction Phase</b>		
East Mecklenburg High School (17)	Morris Berg	Turner Construction
E.E. Waddell (17)	Moseley	Randolph & Sons
Garinger Addition/Renovation & CTE (17)	LS3P	Balfour Beatty
J.T. Williams (17)	FWA	New Atlantic
Lansdowne Elementary School Replacement (17)	Perkins Eastman	Edifice, Inc.
Mint Hill ES (17) <i>(fka Bain, Lebanon Rd, Piney Grove)</i>	FWA	Metcon
Mountain Island School (17)	ADW	Whiting-Turner
New ES (Elon, Hawk Ridge, Polo Ridge) (17)	Little Diversified	Balfour Beatty
New ES (Hidden Valley, JW Grier, Newell) (17)	ADW	Edifice, Inc.
New ES (Windsor, Winterfield, Idlewild) (17)	Neighboring Concepts	Rodgers-Holt Brothers
New HS (South, Ardrey) (17)	Ratio	Messer
Palisades High School (Olympic Relief) (17)	Little Diversified	Edifice, Inc.
Shamrock Gardens Elementary School Replacement (17)	Little Diversified	Rodgers-Holt Brothers
West Charlotte High School (17)	LS3P	Rodgers-Holt Brothers

Capital Improvements Program  
***Projects Substantially Completed/Closed \****

School	Turnover Year	Architect	General Contractor
CTE (Harding, Olympic, South) (17)	Jan-22	MPS	Branch Brownstone
Briarwood Elementary School Replacement (17)	Aug-21	ADW	New Atlantic Contracting
Montclair Elementary School (17)	Aug-21	WHN	Messer Construction
North Academy of World Languages (17)	Aug-21	ADW	New Atlantic Contracting
Sharon Elementary School (17)	Aug-21	Clark Nexsen	Samet
South Academy of International Languages (17)	Aug-21	FWA	Messer Construction
South Pine Academy (17)	Aug-21	FWA	Metcon
West Mecklenburg Gym (17)	Aug-21	Moseley	Barnhill/D.A. Everett
Collinswood Language Academy (17)	Aug-20	Perkins Eastman	Turner Construction
Harding High School Renovation (17)	Aug-20	SFLA	Barnhill Contracting
Rea Farms STEAM Academy (13)	Aug-20	Little Diversified	Balfour Beatty
Ashley Park K-8 Conversion (13)	Aug-19	ADW	Turner Construction
Druid Hills K-8 Conversion (13)	Aug-19	ADW	Edifice, Inc.
Selwyn Elementary (13)	Aug-19	Clark Nexsen	Balfour Beatty
Charlotte Mecklenburg Academy (17)	Aug-19	KSQ	Edifice, Inc.
Davidson K-8 (13)	Aug-19	Little Diversified	Gilbane
CTE - North Mecklenburg High (13)	Aug-19	LS3P	Shiel Sexton
CTE - Garinger (13)	Mar-19	LS3P	Hostetter & Son
CTE - Independence (13)	Mar-19	LS3P	D.E. Brown
CTE - West Mecklenburg (13)	Mar-19	LS3P	Hostetter & Son
Charlotte East Language Academy (13)	Aug-18	Morris Berg	Edifice, Inc
Myers Park High School Phase 3 (13)	Aug-18	Boomerang Design	BE&K
Northridge Middle (13)	Aug-18	Morris Berg	Barnhill Contracting
Myers Park High Bldg 2 (13)	Feb-18	Boomerang Design	BE&K
East Mecklenburg High Addition (13)	Jan-18	Bergman (fna Gantt Huberman)	Edifice, Inc.
J.M. Alexander Middle (13)	Aug-17	FWA Group	Balfour Beatty
Northwest School of the Arts Renovation (13)	Aug-17	Moseley	Turner Construction
Renaissance West STEAM Academy (13)	Aug-17	Little Diversified	Rodgers Construction
South Mecklenburg High Addition (13)	Jul-17	SFLA	Barnhill Contracting
Myers Park High Bldg 1 (13)	Sep-16	Boomerang	KBR
Statesville Road Elementary (13)	Aug-16	ADW	JE Dunn
Nations Ford Elementary (13)	Aug-16	Wash Hatem Nelson	Messer Construction
Olympic High Addition (13)	Aug-16	McMillan, Pazdan, Smith	Turner Construction
Lawrence Orr Elementary (07)	Aug-15	Cort Architectural Group	DH Griffin/Metcon
Parkside Elementary (07)	Aug-15	Wash Hatem Nelson	Clancy & Theys
Hawthorne High Renovations (07)	Aug-15	Morris-Berg	Balfour Beatty
Newell Elementary (07)	Aug-15	Perkins Eastman	New Atlantic Contracting
Ranson Middle (07)	Aug-15	Morris-Berg	Edifice, Inc.
Vance High	Jan-15	LS3P	Matthews Construction Co., Inc.
Garinger High - Renovations/Addition	Aug-14	Adams Group Architects	Turner Construction
Olympic High - Stadium	Aug-14	Site Solutions	Turner Construction
West Mecklenburg High - Stadium	Aug-14	Site Solutions	Turner Construction
Collinswood - Indoor Air Quality	Aug-14	PEA	The Bowers Group
Lansdowne - Indoor Air Quality	Aug-14	AeroRaq	Tyler 2
McKee Road - Indoor Air Quality	Aug-14	McCracken & Lopez	Godfrey Construction
Garinger High - Track & Field	Jul-14	Site Solutions	Turner Construction
Independence High - Gym	Jun-14	Shook Kelly	Shelco, Inc. (CM)
Palisades Park Elementary	May-14	Wash Hatem Nelson	Clancy & Theys
East Mecklenburg High Auditorium	Jan-14	Gantt Huberman Associates	Godfrey Construction Co., Inc.

*Projects closed prior to 2014 are not shown*

# CMS Capital Improvement Plan 2017 Bond Projects





# PROJECT STATUS REPORT



## Monthly Project Status 2017 Bond Summary

June 2022

Project	Current Project Estimate	Project Scope	** Occupy On	Design Phase	Construction Progress	Project Status
Briarwood Elementary School (17)	\$31,762,730	45-classroom replacement facility; replaces school built in 1956.	August 2021	Complete	100 %	The construction manager is finalizing closeout and the return of the Park and Recreation land used during construction.
Bruns Academy (17)	\$43,284,927	New 45-classroom elementary school (K-5); replaces old school built in 1969.	August 2024	Design Development	0 %	The Bruns Avenue Elementary Replacement project is scheduled to receive the design development submittal in July. The majority of CMS due diligence activities have concluded; additional investigations with the existing sanitary sewer are underway. Design discussions with CDOT and Parks & Recreation continue to progress. This new 45-classroom school facility is being designed with a full size gym and associated areas in coordination with Charlotte-Mecklenburg Park & Recreation. The school is scheduled to start construction in spring of 2023 be completed August 2024.
Career and Technology Education (17)	\$10,159,765	Phase I CTE upgrades at Olympic, Harding, Garinger and South Mecklenburg.	January 2022	Complete	99 %	The CTE projects at Harding and South Mecklenburg have completed the construction renovations.
Charlotte-Mecklenburg Academy (17)	\$17,699,220	New EC school located on the old Statesville Elementary School site.	August 2019	Complete	100 %	Project is complete.
Collinswood Language Academy (17)	\$41,422,560	New 63-classroom K-8 facility on the site of the Smith Family Center.	August 2020	Complete	100 %	Project is complete.
E.E. Waddell (17)	\$5,137,367	Repurpose current E.E. Waddell to reopen as a magnet high school.	August 2023	Complete	20 %	The contractor for E.E. Waddell has started construction renovations. The work will be completed in phases; one of the first areas will be the Media Center with work on the new Maker Space. They are also working in the science wing adding emergency showers and eye wash stations. The classroom lighting is being upgraded with LED fixtures.

# Monthly Project Status

2017 Bond Summary

June 2022

Project	Current Project Estimate	Project Scope	** Occupy On	Design Phase	Construction Progress	Project Status
East Mecklenburg High School (17)	\$10,405,411	This project will provide for the design, and construction of a new 30 classroom building.	August 2022	Complete	99 %	The construction manager for East Mecklenburg High School has reached substantial completion. Project is now in the closeout phase.
Garinger High School (17)	\$5,986,979	Project includes the design and construction for renovations of 300 building and a new 16 classroom building.	January 2023	Complete	70 %	The Garinger Addition and Renovation construction manager has completed the CTE building interior finishes and is finalizing the installation of rated assemblies at the boiler flue and elevator. The installation and programming of the cameras and security devices continues. The delayed secondary boiler and emergency response repeater equipment is scheduled for installation in July. The 16-classroom addition will be occupied in August 2022. The 300 Building renovations have started and are scheduled to complete January 2023.
Harding High School (17)	\$13,747,878	Renovation of the kitchen, cafeteria, existing gym (aux) and the addition of a new gym.	August 2020	Complete	100 %	Project is complete.
JT Williams (17)	\$17,432,600	Project includes building renovations to J.T. Williams Montessori magnet.	August 2024	Complete	1 %	The construction manager for JT Williams Secondary Montessori issued the Notice to Proceed. Contractors will mobilize in July. Work will begin with the 100 Building and site work. A 10-classroom modular is also being placed onsite to provide swing space while renovations in the 200 Building take place and to provide future classroom space.

# Monthly Project Status

2017 Bond Summary

June 2022

Project	Current Project Estimate	Project Scope	** Occupy On	Design Phase	Construction Progress	Project Status
Lansdowne Elementary School (17)	\$34,078,834	New 45-classroom school; replaces old school built in 1959 and relieve crowding at Elizabeth Lane ES.	August 2022	Complete	88 %	The Lansdowne Elementary School construction manager continues to work on interior finishes. The fire alarm and intercom systems are being finalized for inspections. The mechanical systems are also being tested and commissioned. The final cleaner has started in the classrooms and will work throughout. The painter is applying the final coat to corridor walls. The staff/visitor parking lot has been paved and work has started on the new parent entrance loop. The mobile classroom units have been moved which allows for the bus lot entrance drive to be paved. Occupancy of the replacement school is scheduled for August 2022. Upon completion of the new building demolition and remaining site work will commence and be completed in 2023.
Lincoln Heights Elementary School (17)	\$4,588,675	Repurpose and reopen as magnet school.	August 2023	Construction Documents	0 %	The Lincoln Heights Elementary project's design is being finalized and is scheduled to bid in August. The renovation/modifications to the building will be phased and are scheduled to be completed by summer of 2023.
Mint Hill Elementary School (17)	\$30,455,951	New 45-classroom elementary school; relieves crowding at Bain, Lebanon Road, Piney Grove.	August 2022	Complete	89 %	The Mint Hill Elementary School (fka Bain, Lebanon, Piney Grove Relief) construction manager continues work on interior finishes. Life safety systems are being finalized and inspected. The VCT is now complete and final clean has started in the classrooms. The painter is working towards final coat and completing finish trim. Kitchen equipment has been delivered and set. Site work including playgrounds is progressing and sod is being installed. The front staff lot is scheduled to be paved and striped in July. The teams continue to address supply chain issues impacting the delivery of required electrical panels and the generator and are providing substitutions and temporary solutions to allow the construction sequencing to continue. The road work continues and based on current product lead times the signal installation will occur in the winter 2023.

# Monthly Project Status

2017 Bond Summary

June 2022

Project	Current Project Estimate	Project Scope	** Occupy On	Design Phase	Construction Progress	Project Status
Montclair Elementary School (17)	\$28,209,390	New 45-classroom replacement facility replacing school built in 1958.	August 2020	Complete	100 %	Project is complete.
Mountain Island Lake Academy (17)	\$13,239,686	K-8 Phase 2 - New gymnasium and specialty classrooms.	August 2023	Complete	2 %	The Mountain Island Lake Academy Gym/Classroom Addition construction manager mobilized on the site, installed the temporary site fencing and began removal of the existing parking lot islands.
New Elementary School (Elon, Hawk Ridge, Polo Relief) (17)	\$51,856,961	New 45-classroom elementary school to relieve Elon, Hawk Ridge, Polo.	August 2023	Complete	6 %	The New Elementary School (Elon, Hawk Ridge, Polo Relief) construction manager continued with grading operations. The aggregate pier contractor mobilized and installed all piers. Foundations and other permittable work will commence once permits are approved and received from the authorities having jurisdiction.
New Elementary School (Hidden Valley, JW Grier, Newell) (17)	\$43,579,387	New 45-classroom elementary school; relieves overcrowding at Hidden Valley, J.W. Grier, Newell.	August 2023	Complete	7 %	The New Elementary School (Hidden Valley, JW Grier, Newell Relief) construction manager has completed initial grading activities and has the building pad on grade. Building footings to follow. Site grading will continue to allow parking and drives to meet established grades. The construction team continues to work through supply chain material deliveries that includes electrical switch gear, roofing materials and storm water piping.
New Elementary School (Windsor, Winterfield, Idlewild Relief) (17)	\$45,297,022	New 45-classroom elementary school to relieve Windsor, Winterfield, and Idlewild ES.	August 2023	Complete	4 %	The New Elementary School (Windsor Park, Winterfield, Idlewild Relief) construction manager continues site grading. The storm water quality and erosion control ponds have been established. The construction trailer has been delivered. Gravel lots have been installed to accommodate construction parking.
New High School (South, Ardrey) (17)	\$158,786,358	New 100 classroom high school to relieve South Mecklenburg, Ardrey Kell and Myers Park HS.	August 2024	Complete	5 %	The New High School (South, Ardrey Relief) construction manager completed the installation of the erosion control devices. Grading operations continued throughout the site along with starting rock blasting operations.
North Academy of World Languages (17)	\$42,198,909	New 66 classroom K-8 Language Immersion facility located on the old J.M. Alexander Middle School site.	August 2021	Complete	100 %	Project is complete.

# Monthly Project Status

2017 Bond Summary

June 2022

Project	Current Project Estimate	Project Scope	** Occupy On	Design Phase	Construction Progress	Project Status
Northwest School of the Arts (17)	\$20,467,000	Replace classroom building built in 1952 and build classroom addition that supports program.	August 2024	Pre-Schematic	0 %	The Northwest School of the Arts Additions pre-schematic design submittal was submitted and is under review for scope comments. Initial scope includes a classroom building that replaces the existing visual arts classroom building.
Palisades High School (17)	\$108,908,793	New 100 classroom high school; relieves crowding at Olympic High School.	August 2022	Complete	98 %	The construction manager for the Palisades High School (fka New High School Olympic Relief) continued working toward finals for permanent certificate of occupancy and completing punch list items. The site work continued with installation of the permanent detention pond liner and final grading. FF&E delivery and installations continue.
Shamrock Gardens Elementary School (17)	\$31,358,351	New 45-classroom replacement facility.	August 2022	Complete	99 %	The Shamrock Gardens Elementary School construction manager continued completing the punch list and final closeout documents. FF&E move in continued through June with an expected completion the end of July.
Sharon Elementary School (17)	\$9,125,862	Add 16 classroom building and increase capacity of cafeteria.	August 2021	Complete	100 %	Project is complete.
South Academy of International Languages (fka New K-8 School (South) (17)	\$41,209,367	New 71 classroom K-8 Language Immersion facility located on the old Nations Ford Elementary School site.	August 2021	Complete	100 %	Project is complete.
South Mecklenburg High School (17)	\$15,622,927	Renovate/replace two classroom buildings built in 1958 to upgrade learning conditions.	January 2025	Pre-Schematic	0 %	The architect for the South Mecklenburg High School Addition has submitted the pre-schematic design submittal and it is under review for scope comments. Initial scope includes a classroom building addition of 21 classrooms.
South Pine Academy (17)	\$30,822,550	New 45-classroom elementary school to relieve Nations Ford, Sterling, and Steele Creek.	August 2021	Complete	100 %	Project is complete.

# Monthly Project Status

2017 Bond Summary

June 2022

Project	Current Project Estimate	Project Scope	** Occupy On	Design Phase	Construction Progress	Project Status
West Charlotte High School (17)	\$105,977,166	New 100 classroom school to replace current facility built in 1954.	August 2022	Complete	87 %	The trade contractors continue to work towards completion throughout the West Charlotte High School facility. The project has reached substantial completion. The architect and engineers are finalizing their punch list. Some finish work remains and trade contractors are focused on preparing areas for school occupancy. The FF&E is well underway in the Administration wing and classrooms. The team continues to work with school administration on the transition from Phase 1 to Phase 2 construction.
West Mecklenburg High School (17)	\$6,457,359	Provide new gymnasium, the existing gymnasium will become the auxiliary.	August 2021	Complete	100 %	Project is complete.

# MONTHLY PROJECT PHOTOS



## PROJECT PROGRESS PHOTOS

---



Palisades High School

## PROJECT PROGRESS PHOTOS

---



Palisades High School



## PROJECT PROGRESS PHOTOS

---



Palisades High School

# PROJECT PROGRESS PHOTOS

---



Palisades High School



## PROJECT PROGRESS PHOTOS

---



West Charlotte High School Replacement



## PROJECT PROGRESS PHOTOS

---



West Charlotte High School Replacement



## PROJECT PROGRESS PHOTOS



West Charlotte High School Replacement

## PROJECT PROGRESS PHOTOS

---



West Charlotte High School Replacement



## PROJECT PROGRESS PHOTOS

---



Shamrock Gardens Elementary School

## PROJECT PROGRESS PHOTOS

---



Shamrock Gardens Elementary School



## PROJECT PROGRESS PHOTOS

---



Shamrock Gardens Elementary School



Lansdowne Elementary School





Lansdowne Elementary School



Lansdowne Elementary School



## PROJECT PROGRESS PHOTOS

---



East Mecklenburg High School

## PROJECT PROGRESS PHOTOS

---



East Mecklenburg High School



## PROJECT PROGRESS PHOTOS

---



East Mecklenburg High School

## PROJECT PROGRESS PHOTOS

---



Mint Hill Elementary School

## PROJECT PROGRESS PHOTOS

---



Mint Hill Elementary School



## PROJECT PROGRESS PHOTOS

---



Mint Hill Elementary School

## PROJECT PROGRESS PHOTOS

---



Garinger High School

## PROJECT PROGRESS PHOTOS

---



Garinger High School



## PROJECT PROGRESS PHOTOS

---



Garinger High School

# MWSBE PARTICIPATION REPORT



# Contract Status Report - MWSBE Participation Commitments

Report Date 7/12/2022

Charlotte-Mecklenburg Schools

7/12/2022 11:19:49 AM

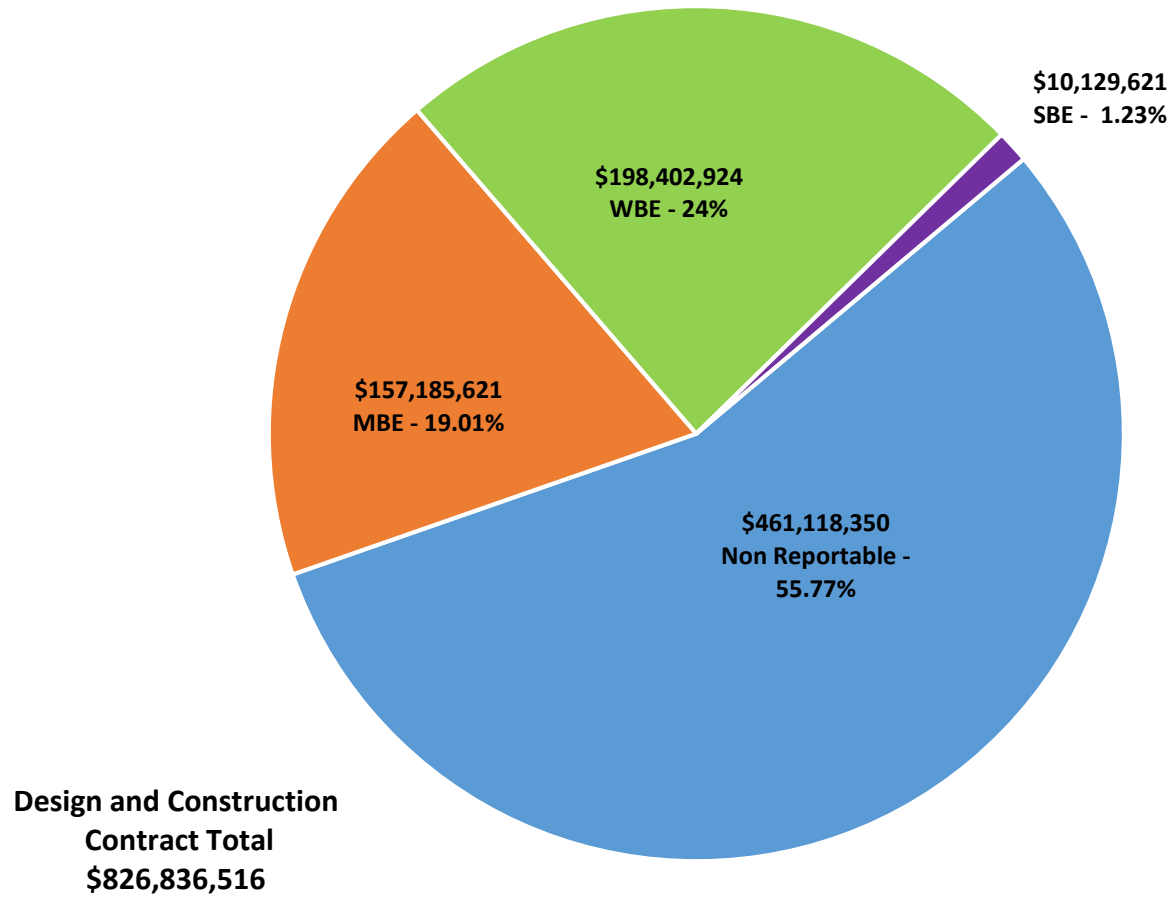
2017 Bond Projects

June 2022 Monthly Bond Report

Facility	Contract Amount	African American MBE\$	%	Other MBE \$	%	Total MBE \$	%	Other WBE \$	%	Other SBE \$	%	Total	%
<u>Briarwood Elementary School (17)</u>	\$28,723,186	\$4,020,515	14.00%	\$1,610,132	5.61%	\$5,630,647	19.60%	\$2,143,102	7.46%	\$182,300	0.63%	\$7,956,049	27.70%
<u>Career and Technology Education (1</u>	\$5,926,589	\$525,859	8.87%	\$292,652	4.94%	\$818,511	13.81%	\$204,477	3.45%	\$63,430	1.07%	\$1,086,418	18.33%
<u>Charlotte-Mecklenburg Academy (17</u>	\$17,035,852	\$198,536	1.17%	\$1,029,192	6.04%	\$1,227,728	7.21%	\$872,755	5.12%	\$13,200	0.08%	\$2,113,683	12.41%
<u>Collinswood Language Academy (17)</u>	\$38,527,740	\$649,287	1.69%	\$1,613,103	4.19%	\$2,262,390	5.87%	\$11,362,566	29.49%	\$9,328	0.02%	\$13,634,284	35.39%
<u>E.E. Waddell (17)</u>	\$1,967,137	\$0	0.00%	\$0	0.00%	\$0	0.00%	\$10,950	0.56%	\$0	0.00%	\$10,950	0.56%
<u>East Mecklenburg High School (17)</u>	\$12,676,283	\$603,811	4.76%	\$532,460	4.20%	\$1,136,271	8.96%	\$490,382	3.87%	\$681,075	5.37%	\$2,307,728	18.21%
<u>Garinger High School (17)</u>	\$4,240,502	\$228,140	5.38%	\$1,032,839	24.36%	\$1,260,979	29.74%	\$604,673	14.26%	\$499,000	11.77%	\$2,364,652	55.76%
<u>Harding High School (17)</u>	\$13,015,986	\$1,504,505	11.56%	\$310,356	2.38%	\$1,814,862	13.94%	\$3,846,831	29.55%	\$176	0.00%	\$5,661,869	43.50%
<u>JT Williams (17)</u>	\$15,272,031	\$2,000	0.01%	\$20,000	0.13%	\$22,000	0.14%	\$0	0.00%	\$51,800	0.34%	\$73,800	0.48%
<u>Lansdowne Elementary School (17)</u>	\$30,701,909	\$2,255,059	7.35%	\$498,305	1.62%	\$2,753,364	8.97%	\$2,339,232	7.62%	\$223,625	0.73%	\$5,316,221	17.32%
<u>Lincoln Heights Elementary School (1</u>	\$454,706	\$92,274	20.29%	\$18,800	4.13%	\$111,074	24.43%	\$0	0.00%	\$74,503	16.38%	\$185,577	40.81%
<u>Mint Hill Elementary School (17)</u>	\$26,367,490	\$4,678,087	17.74%	\$18,825,991	71.40%	\$23,504,078	89.14%	\$1,240,643	4.71%	\$308,680	1.17%	\$25,053,401	95.02%
<u>Montclair Elementary School (17)</u>	\$26,093,784	\$3,617,952	13.87%	\$2,260,381	8.66%	\$5,878,333	22.53%	\$5,729,641	21.96%	\$518,632	1.99%	\$12,126,605	46.47%
<u>Mountain Island Lake Academy (17)</u>	\$12,499,991	\$0	0.00%	\$36,650	0.29%	\$36,650	0.29%	\$29,650	0.24%	\$15,300	0.12%	\$81,600	0.65%
<u>New Elementary School (Elon, Hawk</u>	\$37,297,839	\$5,569,267	14.93%	\$2,413,545	6.47%	\$7,982,812	21.40%	\$7,990,684	21.42%	\$145,500	0.39%	\$16,118,996	43.22%
<u>New Elementary School (Hidden Vall</u>	\$38,642,060	\$5,493,635	14.22%	\$4,211,754	10.90%	\$9,705,389	25.12%	\$2,237,544	5.79%	\$25,600	0.07%	\$11,968,533	30.97%
<u>New Elementary School (Windsor, W</u>	\$41,201,074	\$8,807,507	21.38%	\$3,356,831	8.15%	\$12,164,338	29.52%	\$26,169,724	63.52%	\$302,949	0.74%	\$38,637,011	93.78%
<u>New High School (South, Ardrey) (17</u>	\$132,653,416	\$1,867,976	1.41%	\$3,365,372	2.54%	\$5,233,348	3.95%	\$7,188,271	5.42%	\$3,913,152	2.95%	\$16,334,771	12.31%
<u>North Academy of World Languages</u>	\$38,090,783	\$1,688,775	4.43%	\$1,575,863	4.14%	\$3,264,638	8.57%	\$3,471,693	9.11%	\$437,418	1.15%	\$7,173,748	18.83%
<u>Northwest School of the Arts (17)</u>	\$1,327,480	\$0	0.00%	\$0	0.00%	\$0	0.00%	\$0	0.00%	\$0	0.00%	\$0	0.00%
<u>Palisades High School (17)</u>	\$98,207,798	\$13,345,487	13.59%	\$5,874,324	5.98%	\$19,219,811	19.57%	\$8,478,293	8.63%	\$766,550	0.78%	\$28,464,654	28.98%
<u>Shamrock Gardens Elementary Scho</u>	\$28,032,790	\$2,366,885	8.44%	\$1,469,007	5.24%	\$3,835,892	13.68%	\$23,207,193	82.79%	\$274,496	0.98%	\$27,317,581	97.45%
<u>Sharon Elementary School (17)</u>	\$8,525,796	\$326,844	3.83%	\$283,497	3.33%	\$610,341	7.16%	\$926,873	10.87%	\$217,984	2.56%	\$1,755,197	20.59%
<u>South Academy of International Lan</u>	\$37,082,033	\$6,023,141	16.24%	\$2,431,071	6.56%	\$8,454,212	22.80%	\$10,755,611	29.00%	\$347,799	0.94%	\$19,557,622	52.74%

Facility	Contract Amount	African American MBE\$	%	Other MBE \$	%	Total MBE \$	%	Other WBE \$	%	Other SBE \$	%	Total	%
<u>South Mecklenburg High School (17)</u>	\$1,096,679	\$0	0.00%	\$0	0.00%	\$0	0.00%	\$0	0.00%	\$0	0.00%	\$0	0.00%
<u>South Pine Academy (17)</u>	\$26,205,173	\$916,165	3.50%	\$19,205,893	73.29%	\$20,122,058	76.79%	\$4,342,256	16.57%	\$237,754	0.91%	\$24,702,068	94.26%
<u>West Charlotte High School (17)</u>	\$95,161,018	\$15,398,459	16.18%	\$3,944,225	4.14%	\$19,342,684	20.33%	\$72,696,129	76.39%	\$535,596	0.56%	\$92,574,409	97.28%
<u>West Mecklenburg High School (17)</u>	\$9,809,391	\$283,809	2.89%	\$509,403	5.19%	\$793,212	8.09%	\$2,063,752	21.04%	\$283,775	2.89%	\$3,140,739	32.02%
<b>Grandtotal</b>	\$826,836,516	\$80,463,975	9.73%	\$76,721,646	9.28%	\$157,185,621	19.01%	\$198,402,924	24.00%	\$10,129,621	1.23%	\$365,718,166	44.23%

## MWSBE Participation 2017 Bond Projects



# PROJECT CONTROLS

CHARLOTTE-MECKLENBURG BOARD OF EDUCATION  
2013 BOND SERIES-CAPITAL IMPROVEMENT PROGRAM  
BUDGET STATUS REPORT

	Original Project Budget	Current Project Budget	Committed Amount	Approved Change Orders	Total Committed	Pending Commitments	To Be Committed	Prev Paid To Date	Paid To Date	Balance To Complete	Monthly Expenditure
	(A)	(B)	(C)	(D)	(E)=C+D	(F)	(G)=(B-E-F)	(H)	(I)	(J)=(B-I)	(K)=(I-H)
<b><u>A. REPLACEMENT &amp; RENOVATIONS</u></b>											
1 Career & Technology Education Institutes Phase 1:	\$8,640,000	\$18,697,857	\$6,963,309	\$11,734,547	\$18,697,857	\$0	\$1	\$14,427,102	\$15,026,487	\$3,671,370	\$599,385
2 Davidson K-8 Conversion	\$9,500,000	\$13,461,149	\$2,131,151	\$11,329,998	\$13,461,149	\$0	\$0	\$13,461,149	\$13,461,149	\$0	\$0
3 J.M. Alexander Middle Replacement	\$30,672,000	\$29,845,539	\$4,502,518	\$25,343,021	\$29,845,539	\$0	\$0	\$29,845,539	\$29,845,539	\$0	\$0
4 Nations Ford Elementary Replacement	\$19,440,000	\$19,231,604	\$3,958,871	\$15,272,733	\$19,231,604	\$0	\$0	\$19,231,604	\$19,231,604	\$0	\$0
5 Northwest School of the Arts	\$12,420,000	\$12,868,718	\$2,047,917	\$10,820,801	\$12,868,718	\$0	\$0	\$12,868,719	\$12,868,719	\$0	\$0
6 Oakhurst STEAM Magnet Elementary/Starmount	\$5,940,000	\$5,407,812	\$3,471,397	\$1,936,415	\$5,407,812	\$0	\$0	\$5,407,812	\$5,407,812	\$0	\$0
7 Pre-K-8 Conversions Phase II: Ashley Park/ Bruns	\$24,732,000	\$19,700,807	\$4,167,671	\$15,533,138	\$19,700,809	\$0	\$0	\$19,700,807	\$19,700,807	\$0	\$0
8 Selwyn Elementary	\$2,592,000	\$4,624,831	\$744,799	\$3,880,032	\$4,624,831	\$0	\$0	\$4,624,831	\$4,624,831	\$0	\$0
9 Statesville Road Elementary	\$20,340,000	\$20,648,509	\$5,081,473	\$15,567,037	\$20,648,509	\$0	\$0	\$20,648,509	\$20,648,509	\$0	\$0
10 West Mecklenburg HS	\$0	\$3,993,543	\$3,993,543	\$0	\$3,993,543	\$0	\$0	\$3,993,543	\$3,993,543	\$0	\$0
<b>Total Replacement &amp; Renovations</b>	<b>\$134,276,000</b>	<b>\$148,480,367</b>	<b>\$37,062,648</b>	<b>\$111,417,722</b>	<b>\$148,480,370</b>	<b>\$0</b>	<b>\$2</b>	<b>\$144,209,614</b>	<b>\$144,808,999</b>	<b>\$3,671,368</b>	<b>\$599,385</b>
<b><u>B. RESPONSE TO ENROLLMENT GROWTH</u></b>											
1 East Mecklenburg High Addition	\$12,744,000	\$12,083,804	\$4,465,200	\$7,618,603	\$12,083,803	\$0	\$0	\$12,083,803	\$12,083,803	\$0	\$0
2 Myers Park High Addition	\$22,248,000	\$11,040,942	\$1,207,493	\$9,833,448	\$11,040,942	\$0	\$0	\$11,040,941	\$11,040,941	\$0	\$0
3 Northridge Middle Addition	\$6,448,000	\$6,366,170	\$2,114,306	\$4,251,865	\$6,366,171	\$0	\$0	\$6,366,171	\$6,366,171	\$0	\$0
4 Olympic High Addition/Renovation	\$8,964,000	\$8,947,310	\$2,002,694	\$6,944,615	\$8,947,310	\$0	\$0	\$8,947,310	\$8,947,310	\$0	\$0
5 South Mecklenburg High Addition	\$18,360,000	\$16,307,355	\$2,922,282	\$13,385,073	\$16,307,355	\$0	\$0	\$16,307,355	\$16,307,355	\$0	\$0
6 Charlotte East Language Academy (FKA -New Lang	\$30,376,000	\$31,387,929	\$5,740,182	\$25,647,747	\$31,387,929	\$0	\$0	\$31,387,929	\$31,387,929	\$0	\$0
7 Rea Farms STEAM Academy	\$31,376,000	\$40,476,000	\$9,062,022	\$30,187,065	\$39,249,087	(\$5,460)	\$1,232,373	\$38,898,906	\$38,898,906	\$1,577,094	\$0
8 Renaissance West STEAM Academy (FKA New Pre-	\$30,376,000	\$31,698,952	\$5,667,388	\$26,031,564	\$31,698,952	\$0	\$0	\$31,698,952	\$31,698,952	\$0	\$0
9 New High School - South Meck/Ardrey Kell Relief *	\$0	\$9,278,699	\$9,278,699	\$0	\$9,278,699	\$0	\$0	\$9,278,699	\$9,278,699	\$0	\$0
<b>Total Response to Enrollment Growth</b>	<b>\$160,892,000</b>	<b>\$167,587,161</b>	<b>\$42,460,267</b>	<b>\$123,899,981</b>	<b>\$166,360,248</b>	<b>(\$5,460)</b>	<b>\$1,232,373</b>	<b>\$166,010,066</b>	<b>\$166,010,066</b>	<b>\$1,577,095</b>	<b>\$0</b>
<b><u>C. CONTINGENCY</u></b>											
	\$0	\$0	\$0	\$0	\$0	\$0	\$0	\$0	\$0	\$0	\$0
<b>Total Contingency</b>	<b>\$0</b>	<b>\$0</b>	<b>\$0</b>	<b>\$0</b>	<b>\$0</b>	<b>\$0</b>	<b>\$0</b>	<b>\$0</b>	<b>\$0</b>	<b>\$0</b>	<b>\$0</b>
<b>TOTAL LOCAL BOND PROGRAM</b>	<b>\$295,168,000</b>	<b>\$316,067,527</b>	<b>\$79,522,915</b>	<b>\$235,317,703</b>	<b>\$314,840,618</b>	<b>(\$5,460)</b>	<b>\$1,232,375</b>	<b>\$310,219,680</b>	<b>\$310,819,065</b>	<b>\$5,248,463</b>	<b>\$599,385</b>

Original project estimated costs approved by the Board Of Education on July 23, 2013 and approved by the voters of Mecklenburg County on November 5, 2013.

Note: Mecklenburg County's appropriated interest from COPS to increase funding for the 2013 Bond Program.

CHARLOTTE-MECKLENBURG BOARD OF EDUCATION  
2017 BOND SERIES-CAPITAL IMPROVEMENT PROGRAM  
BUDGET STATUS REPORT

	Original Project Budget	Current Project Budget	Committed Amount	Approved Change Orders	Total Committed	Pending Commitments	To Be Committed	Prev Paid To Date	Paid To Date	Balance To Complete	Monthly Expenditure
	(A)	(B)	(C)	(D)	(E)=C+D	(F)	(G)=(B-E-F)	(H)	(I)	(J)=(B-I)	(K)=(I-H)
<b><u>A. REPLACEMENT &amp; RENOVATIONS</u></b>											
1 Briarwood Elementary *	\$29,091,619	\$31,762,730	\$4,780,835	\$26,609,642	\$31,390,476	\$0	\$372,254	\$31,018,829	\$31,022,030	\$740,700	\$3,201
2 Bruns Academy Replacement	\$34,207,808	\$43,284,927	\$3,756,788	\$218,050	\$3,974,838	\$0	\$39,310,089	\$475,450	\$719,616	\$42,565,311	\$244,166
3 Career & Technology Education Upgrades	\$10,101,734	\$10,159,765	\$2,293,944	\$4,099,152	\$6,393,096	\$77,334	\$3,689,335	\$5,300,857	\$5,358,500	\$4,801,265	\$57,643
4 Collinswood K-8 *	\$44,172,540	\$41,422,560	\$4,927,491	\$36,495,069	\$41,422,560	\$0	\$0	\$41,392,349	\$41,392,349	\$30,211	\$0
5 East Mecklenburg HS	\$12,771,594	\$10,405,411	(\$1,567,280)	\$11,881,417	\$10,314,136	\$20,500	\$70,775	\$8,530,714	\$9,216,920	\$1,188,491	\$686,206
6 Garinger HS	\$13,936,979	\$5,986,979	\$1,633,174	\$3,475,359	\$5,108,533	\$9,250	\$869,196	\$2,459,536	\$2,749,317	\$3,237,662	\$289,781
7 Harding University High *	\$18,330,263	\$13,747,878	\$2,045,267	\$11,702,610	\$13,747,877	\$0	\$0	\$13,747,877	\$13,747,877	\$0	\$0
8 Charlotte-Mecklenburg Academy (FKA -EC Specialty	\$18,957,960	\$17,699,220	\$2,175,504	\$15,523,717	\$17,699,220	\$0	\$0	\$17,699,220	\$17,699,220	\$0	\$0
9 Lansdowne Elementary	\$29,391,270	\$34,078,834	\$4,177,849	\$29,467,186	\$33,645,035	\$106,542	\$327,257	\$24,496,054	\$25,811,143	\$8,267,691	\$1,315,089
10 Lincoln Heights Elementary	\$3,740,478	\$4,588,675	\$577,649	\$49,054	\$626,703	\$0	\$3,961,972	\$402,042	\$402,042	\$4,186,633	\$0
11 Montclair Elementary Replacement *	\$28,559,390	\$28,209,390	\$2,426,761	\$25,782,629	\$28,209,390	\$0	\$0	\$28,188,096	\$28,200,634	\$8,756	\$12,538
12 Mountain Island k-8	\$9,218,439	\$13,239,686	\$1,443,210	\$11,344,864	\$12,788,074	\$0	\$451,612	\$544,687	\$633,318	\$12,606,368	\$88,631
13 Northwest School of the Arts	\$17,632,202	\$20,467,000	\$2,060,482	\$117,644	\$2,178,126	\$0	\$18,288,874	\$49,726	\$63,090	\$20,403,910	\$13,364
14 Shamrock Gardens Elementary *	\$29,890,351	\$31,358,351	\$3,744,664	\$27,153,983	\$30,898,647	\$18,500	\$441,204	\$23,941,293	\$26,337,513	\$5,020,838	\$2,396,220
15 Sharon Elementary	\$7,706,528	\$9,125,862	\$1,443,456	\$7,666,984	\$9,110,441	\$0	\$15,421	\$9,047,784	\$9,047,784	\$78,078	\$0
16 South Mecklenburg HS	\$13,352,143	\$15,622,927	\$1,653,335	\$94,238	\$1,747,573	\$0	\$13,875,354	\$2,834	\$35,209	\$15,587,718	\$32,375
17 E.E. Waddell Magnet HS	\$4,571,709	\$5,137,367	\$2,172,119	\$0	\$2,172,119	\$0	\$2,965,248	\$106,814	\$169,118	\$4,968,249	\$62,304
18 West Charlotte HS Replacement	\$109,977,166	\$105,977,166	\$12,332,368	\$91,489,324	\$103,821,692	\$151,950	\$2,003,524	\$78,227,962	\$81,893,961	\$24,083,206	\$3,665,999
19 West Mecklenburg HS	\$11,065,440	\$6,457,359	(\$2,367,345)	\$8,670,708	\$6,303,362	\$0	\$153,997	\$6,260,309	\$6,260,309	\$197,050	\$0
20 John Taylor Williams	\$13,964,339	\$17,432,600	\$3,103,610	\$12,710,703	\$15,814,313	\$0	\$1,618,287	\$734,491	\$793,263	\$16,639,337	\$58,772
Total Replacement & Renovations	\$460,639,952	\$466,164,687	\$52,813,880	\$324,552,332	\$377,366,212	\$384,076	\$88,414,400	\$292,626,923	\$301,553,212	\$164,611,475	\$8,926,290
<b><u>B. RESPONSE TO ENROLLMENT GROWTH</u></b>											
1 South Academy of International Languages	\$45,359,367	\$41,209,367	\$6,046,436	\$35,050,079	\$41,096,515	\$0	\$112,852	\$40,557,324	\$40,564,377	\$644,990	\$7,054
2 North Academy of World Languages (FKA - New K-8	\$45,359,367	\$42,198,909	\$6,022,055	\$35,999,788	\$42,021,844	\$0	\$177,065	\$41,641,869	\$41,651,649	\$547,259	\$9,780
3 South Pine Academy (FKA - New ES Nations Ford, S	\$29,173,829	\$30,822,550	\$6,793,874	\$24,015,688	\$30,809,562	\$0	\$12,987	\$30,445,233	\$30,449,337	\$373,212	\$4,104
4 Mint Hill Elementary School	\$29,988,332	\$30,455,951	\$3,559,709	\$26,621,982	\$30,181,692	\$29,786	\$244,474	\$20,356,530	\$22,241,802	\$8,214,149	\$1,885,272
5 New Elementary School - Windsor Park Relief *	\$30,422,230	\$45,297,022	\$11,088,143	\$31,659,394	\$42,747,537	\$5,000	\$2,544,485	\$3,683,616	\$5,340,237	\$39,956,785	\$1,656,622
6 New Elementary School - Elon/Hawk Ridge Relief *	\$30,426,712	\$51,856,962	\$14,227,575	\$35,170,706	\$49,398,281	\$0	\$2,458,680	\$12,286,112	\$13,664,126	\$38,192,835	\$1,378,014
7 New Elementary School - Hidden Valley Relief	\$30,518,345	\$43,579,387	\$4,439,661	\$36,548,935	\$40,988,596	\$0	\$2,590,791	\$2,448,356	\$3,704,275	\$39,875,112	\$1,255,919
8 Palisades High School	\$109,908,793	\$108,908,793	\$11,334,481	\$97,051,295	\$108,385,776	\$64,962	\$458,054	\$92,310,341	\$94,743,092	\$14,165,701	\$2,432,751
9 New High School - South Meck/Ardrey Kell Relief *	\$110,287,621	\$158,786,358	\$12,437,391	\$125,624,701	\$138,062,092	\$0	\$20,724,266	\$9,331,390	\$11,903,807	\$146,882,551	\$2,572,417
Total Response to Enrollment Growth	\$461,444,596	\$553,115,298	\$75,949,325	\$447,742,570	\$523,691,895	\$99,748	\$29,323,655	\$253,060,770	\$264,262,704	\$288,852,594	\$11,201,934
<b><u>C. CONTINGENCY</u></b>											
	\$0	\$0	\$0	\$0	\$0	\$0	\$0	\$0	\$0	\$0	\$0
Total Contingency	\$0	\$0	\$0	\$0	\$0	\$0	\$0	\$0	\$0	\$0	\$0

CHARLOTTE-MECKLENBURG BOARD OF EDUCATION  
2017 BOND SERIES-CAPITAL IMPROVEMENT PROGRAM  
BUDGET STATUS REPORT

	Original Project Budget	Current Project Budget	Committed Amount	Approved Change Orders	Total Committed	Pending Commitments	To Be Committed	Prev Paid To Date	Paid To Date	Balance To Complete	Monthly Expenditure
	(A)	(B)	(C)	(D)	(E)=C+D	(F)	(G)=(B-E-F)	(H)	(I)	(J)=(B-I)	(K)=(I-H)
TOTAL LOCAL BOND PROGRAM	\$922,084,548	\$1,019,279,985	\$128,763,206	\$772,294,902	\$901,058,107	\$483,824	\$117,738,055	\$545,687,693	\$565,815,916	\$453,464,069	\$20,128,223

Original project estimated costs approved by the Board Of Education on July 25, 2017 approved by the voters of Mecklenburg County on November 7, 2017.

\*Project included in \$33.2M early funding approved by Board Of Education on August 9, 2016 and Mecklenburg Board of County Commissioners on September 6, 2016. On February 19, 2019 an additional \$8M was approved for New Elementary School - Elon/Hawk Ridge Relief site.

\*Current Budget includes an additional \$89.2M to fund increase land and construction costs. The additional funds were approved by the Board of County Commissioners on June 16, 2020.

**Charlotte-Mecklenburg Board of Education**  
**Approved Construction or Repair Change Orders\***  
**Reporting Period: June 2022**

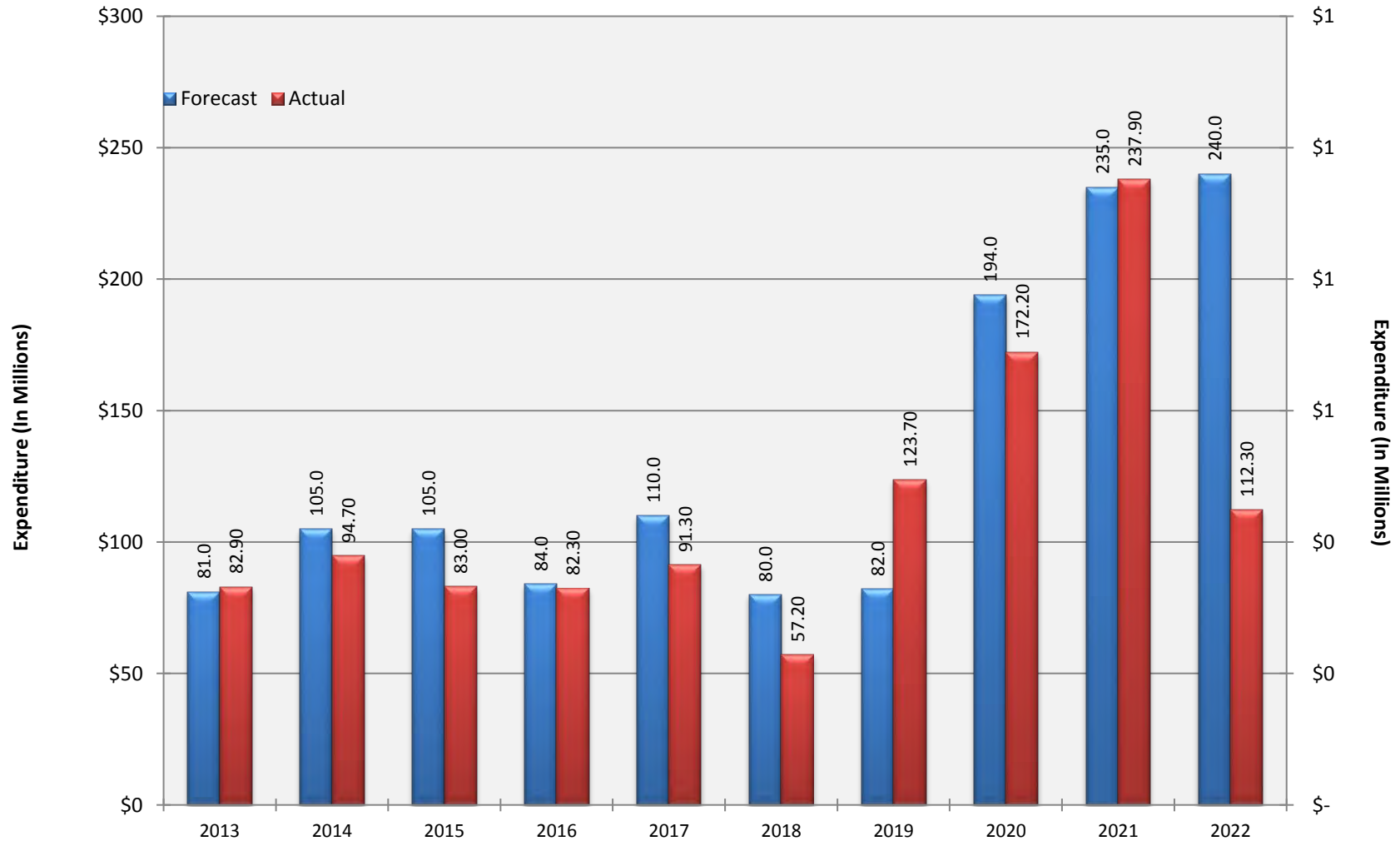
<b>Funding Source</b>	<b>Project Name</b>	<b>Contractor</b>	<b>Description</b>	<b>Change Order Amount</b>	<b>Revised Contract Value</b>
	<b>None this reporting period</b>				

\* Not previously presented to the Board of Education for Approval (less than \$90,000)



# 10 YEAR EXPENDITURE SUMMARY

## Forecast Expenditure versus Actual Expenditures through June 2022



# GLOSSARY

# Glossary

---

- **Project Management** – This section includes updates from our project managers and describes the currently active construction projects. This includes from Board of Education award thru final completion.
- **Design and Bidding** – This section contains updates from our design managers on the projects currently in the design phase. This phase from design award to Board of Education award of construction.
- **Controls** – Section includes misc. updates from controls group including expenditures, related Board of Education awards during the reporting period, cash flow information. This section covers all projects from approved bond through final expenditures and bond close with the county.
- **MWSBE** – Contains updates from the MWSBE Director and team, including current activity and summaries of the participation by MWSBE providers on our program.
- **Bond Progress Summary** – Provides a summary of bond financials including bond value, committed/pending amounts, paid to date, expended this month.
- **Project Procurement Dates** - Next 90 Days major project bid activity.
- **Mobile Swing Space Utilization** – Includes a summary of program related swing space currently in use and the schedule of use.
- **Bond Summary Schedule** – Current program summary schedule including planned design, construction and FF&E. These activities are fed from detailed schedules and are fine-tuned as project information is available.
- **Project Contractor Teams**; Provides summary of turnover dates for completed/closed projects since 2010 including architects/designers and contractors.
- **School Site Location Maps** – General location of bond projects (2017) by type.
- **Project Status Report** – This section of the report provides a summary of the bond project scope, current estimate (all sources), planned occupancy/actual occupancy date. It also provides a current status of the design phase, construction progress and a brief update. The report currently includes 2013 and 2017 bond projects that have or will be completed after to August 2016.
- **MWSBE Participation Report** – The MWSBE report provides a summary of the participation on the 2013 & 2017 Bond funded projects.
- **Project Progress Photos** – Includes photos of active construction projects.
- **Budget Summary Reports** – These reports are by funding source and summarize financial activity to date on the projects. This includes original and current project estimates, committed values, amounts paid to date, balances and monthly expenditures.
- **Change Orders < \$90,000** – This month's approved construction or repair change orders < \$90,000.
- **Expenditure Summary** – Provides a summary of Bond Expenditures by calendar year.