

# Capital Improvement Program

Monthly Bond Report  
May 2022



New Elementary School Elon, Hawk Ridge, Polo Ridge Relief



## **CAPITAL PROGRAM SERVICES** Capital Improvement Program

**MAY 2022**  
**MONTHLY BOND REPORT**

### **PROGRAM OVERVIEW**

- Project Management
- Design and Bidding
- Controls
- MWSBE
- Bond Progress Summary
- Project Procurement - Next 90 Days
- Swing Space Utilization
- Bond Summary Schedule
- Project Contractor Teams; Projects in Design/Construction and Substantially Completed/Closed
- School Site Location Maps
  - Elementary Schools
  - Middle Schools
  - High Schools & Specialty Schools

### **PROJECT STATUS REPORT**

### **MWSBE PARTICIPATION REPORT**

### **PROJECT PROGRESS PHOTOS**

### **PROJECT CONTROLS**

- Budget Summary Reports
  - 2013 Bond Series
  - 2017 Bond Series
- Change Orders < \$90,000
- Expenditure Summary

### **GLOSSARY**

# PROGRAM OVERVIEW

## PROJECT MANAGEMENT

The following is a summary of the activity on the bond funded projects in construction during the month of May.

The construction manager for **East Mecklenburg High School** has reached substantial completion. The architect has developed the punch list and subcontractors are working on the items. The bus parking lot will be re-stripped in June. The FF&E deliveries are ongoing and scheduled for completion in June. The new classroom wing will be occupied in August 2022.

The contractor for **E.E. Waddell** will mobilize for construction activities in June. The work will be completed in phases; one of the first areas will be the Media Center with work on the new Maker Space. The project is scheduled for completion spring of 2023.

The **Garinger Addition and Renovation** construction manager worked diligently to complete the interior finishes with final paint, flooring, toilet partitions and marker/tack boards. The mechanical, electrical, plumbing and fire protection subcontractors completed installation of receptacle cover plates, data covers, thermostats, sprinkler head covers, etc. The testing and balancing began along with the programming of building controls. The architect began the punch list of the interior and exterior of the building. The landscaper continued with installation of sod and the remaining trees and bushes. The 16-classroom addition is scheduled for occupancy August 2022 and the 300 building renovations are scheduled to start in June and are scheduled to complete in January 2023.

The **Lansdowne Elementary School** construction manager continues to work on interior finishes. The VCT is being installed throughout with classroom casework following. Hard tile has been installed in the group toilets. Above ceiling work is being finalized for inspections. The site has been prepped for sod installation and exterior hardscapes including sidewalks are underway. Supply chain deliveries continue to be mitigated to maintain schedule. Occupancy of the replacement school is scheduled for August 2022. Upon completion of the new building demolition and remaining site work will commence and be completed in 2023.

The **Mint Hill Elementary School** (*fka Bain, Lebanon, Piney Grove Relief*) construction manager continues work on interior finishes. Hard tile in the group toilets is being finalized. Above ceiling inspections are complete in the classroom wings and tiles are being dropped. The classroom casework is also complete. The kitchen equipment is being delivered and installed according to plan. Playground equipment has been delivered and underground drainage for this area is being installed. The exterior canopies at the front drop off and bus lot have been installed. The teams continue to address supply chain issues impacting the delivery of required electrical panels and gear including substitutions and revisions to the construction sequencing. This new 45-classroom school is located next to the existing Mint Hill Middle School. The project is scheduled for occupancy in August 2022. The road work will continue into the summer and based on current product lead times the signal installation will continue into the spring of 2023.

The **Mountain Island Lake Academy Gym/Classroom Addition** construction manager received their notice to proceed and plan to mobilize on June 9 and begin site work. They are diligently working on reviewing submittals and logistics. The four classroom and gym addition is scheduled for occupancy August of 2023.

The **New Elementary School (Elon, Hawk Ridge, Polo Relief)** construction manager performed mass grading and completed the installation of the erosion control devices. The new 45-classroom elementary school will be located across from the Ardrey Kell High School and is scheduled for occupancy August 2023.

The **New Elementary School (Hidden Valley, JW Grier, Newell Relief)** construction manager has completed initial measures for erosion control including the storm water pond. The site has been cleared and grading for the building pad is ongoing. The construction team continues to work through supply chain material deliveries that includes

electrical switch gear, roofing materials and storm water piping. This new 45-classroom school will be located next to Northridge Middle School and is scheduled for occupancy August 2023.

The **New Elementary School (Windsor Park, Winterfield, Idlewild Relief)** construction manager has mobilized on site. The initial erosion control measures are being installed and perimeter fencing is progressing. This new 45-classroom school is scheduled for occupancy August 2023.

The **New High School (South, Ardrey Relief)** construction manager continues with installations of the erosion control measures and detention ponds. As areas were cleared explorations were performed in preparation for the removal of rock. The new 100-classroom relief high school is scheduled for occupancy August 2024.

The construction manager for the **Palisades High School** (*fka New High School Olympic Relief*) received a temporary certificate of occupancy for the building and FF&E installations have started. The security and camera systems were brought online allowing move-in operations to begin. The contractor continues to finalize cleaning and miscellaneous components throughout the building along and is completing the punch list. The 100-classroom relief high school will be occupied in August 2022.

The **Shamrock Gardens Elementary School** construction manager received a temporary certificate of occupancy for the building. The contractor is now focused on the punch list and the final closeout documents. FF&E move in is scheduled to begin June 1.

The trade contractors continue to work throughout the **West Charlotte High School** facility. Final finishes have been installed allowing floor waxing and construction cleaning to progress. Building Standards is completing required inspections for occupancy approvals. The architect and engineers are completing punch list inspections allowing subcontractors to repair any issues. The bus lot has been paved and striped. The stadium field will be used for summer football practice sessions and athletic storage. FF&E move from the existing facility and new FF&E installation will begin in June. The team continues to work with school administration on the transition from Phase 1 to Phase 2 construction. The school will be occupied August 2022. Once the new school is occupied the demolition of the existing school and final site work will take place with final project completion in August 2023.

## DESIGN AND BIDDING

The following is a summary of the activity on the bond funded projects in design and bidding phase during the month of May.

The **Bruns Avenue Elementary Replacement** project continues to progress in the design development phase. CMS due diligence activities have advanced; additional subsurface investigations and survey work are underway. Design discussions with CDOT and Parks & Recreation continue to progress. This new 45-classroom school facility is being designed with a full size gym and associated areas in coordination with Charlotte-Mecklenburg Park & Recreation. The school is scheduled to start construction in spring of 2023 be completed August 2024.

The **JT Williams Secondary Montessori** project continues to progress with permit approvals. The construction manager has prepared their GMP change order documents for approval by the BOE in June. The project's base scope focuses on required civil improvements, architectural and MEP renovations in the 100 and 200 buildings. A 10-classroom modular will be used for swing and future space at the school site. The project construction is scheduled to start June 2022 and be completed by summer of 2024.

The **Lincoln Heights Elementary** project's design is being finalized and is scheduled to bid in July. The renovation/modifications to the building will be phased and are scheduled to be completed by summer of 2023.

The **South Mecklenburg High School Addition** and **Northwest School of the Arts Addition** projects are in the pre-schematic design phase.

## CONTROLS

Expenditures for the month of May were \$15M. This brings our fiscal year to date total to \$202.9M against the revised 2022 fiscal year cash flow projection of \$225M. The Controls team continues the process of reconciling and closeout of completed 2013 and 2017 bond projects continues. Available funding is being accumulated to address potential supply chain and increased construction costs.

Board of Education approval was received on May 24 for phase two construction of the Mountain Island Lake Academy new gym and specialty classrooms project.

The Controls team continues to submit notices of potential changes at school sites so senior staff can adequately evaluate issues. Additionally, the Controls team continues the processing of contracts, invoices, preparing notices of potential change, change orders, pay applications, and check requests for projects under construction. Captured construction cost data is used to prepare financial reports such as detailed cost reports, budget summaries, reconciliation to CMS books, revisions to and updated cash flows and complete special financial requests by CMS and Mecklenburg County. This process, along with data compilation and management, allows senior staff to provide the proper guidance/direction and accurate information to the program stakeholders.

## MWSBE

As of May 2022 the overall MWSBE utilization percentage related to design and construction of the 2017 bond projects is 44.93% which includes 19.31% participation by minority contractors, 22.38% by women contractors and 1.24% participation by small business contractors. This accounts for more than \$365 million of utilization by Minority, Women and Small Business Contractors.

The Diversity & Inclusion Office of Charlotte-Mecklenburg Schools continued to conduct several individual virtual orientations with new MWSBE contractors and prime contractors. In addition, team members also attended/hosted the following outreach sessions/pre-bid meetings and/or workforce development opportunities:

### Outreach Sessions:

- Women's Business Center Conference and Vendor Fair
- Crowns of Enterprise Awards
- Metcon Construction contractor meet & greet
- Mt. Island Lake Academy pre-construction meeting hosted by Whiting-Turner
- American Contract Compliance Association National Training Institute Planning meetings

### Good Faith Efforts:

- Review of J.T. Williams MWSBE participation documentation

### Commendations:

- Congratulations to the following Crowns of Enterprise Award Honorees: RJ Leeper Construction – Minority Business of the Year, Sunshine Media Network – Women Business of the Year, 1202 Beatties Ford Road LLC – Small Business of the Year, Viridian Marketing – Prime Contractor of the Year, Lissette Velez from the Hispanic Contractors Association of the Carolinas – Diversity Advocate of the Year and WFAE 90.7 FM – Media Advocate of the Year. Award winners were selected for sound business strategies while driving economic development in the Charlotte-Mecklenburg region.

---

Over the next month team members will continue to work with contractors interested in bidding on the upcoming school projects utilizing various virtual tools to communicate. Contractors are encouraged to review bid advertisements in Charlotte Observer and register as a vendor on the North Carolina Interactive Purchasing System for notification of the various opportunities.

## BOND PROGRESS SUMMARY As of May 2022

Funding Source and Value		Amount Committed/Pending	Amount Paid to Date	Amount Expended This Period
2013 Bond	\$316,067,527	\$314,835,158	\$310,219,680	\$628,903
2017 Bond	\$1,019,279,985	\$888,758,061	\$545,687,693	\$14,414,974
<b>Grand Total</b>	<b>\$1,335,347,512</b>	<b>\$1,203,593,219</b>	<b>\$855,907,373</b>	<b>\$15,043,877</b>



---

---

## UPCOMING MAJOR CONSTRUCTION PROCUREMENT DATES *Three Month Look Ahead*

### **School Name**

**Lincoln Heights**

### **Bid Dates\***

June 2022

*\* NOTE: Work In Progress...Dates Subject to Change.*

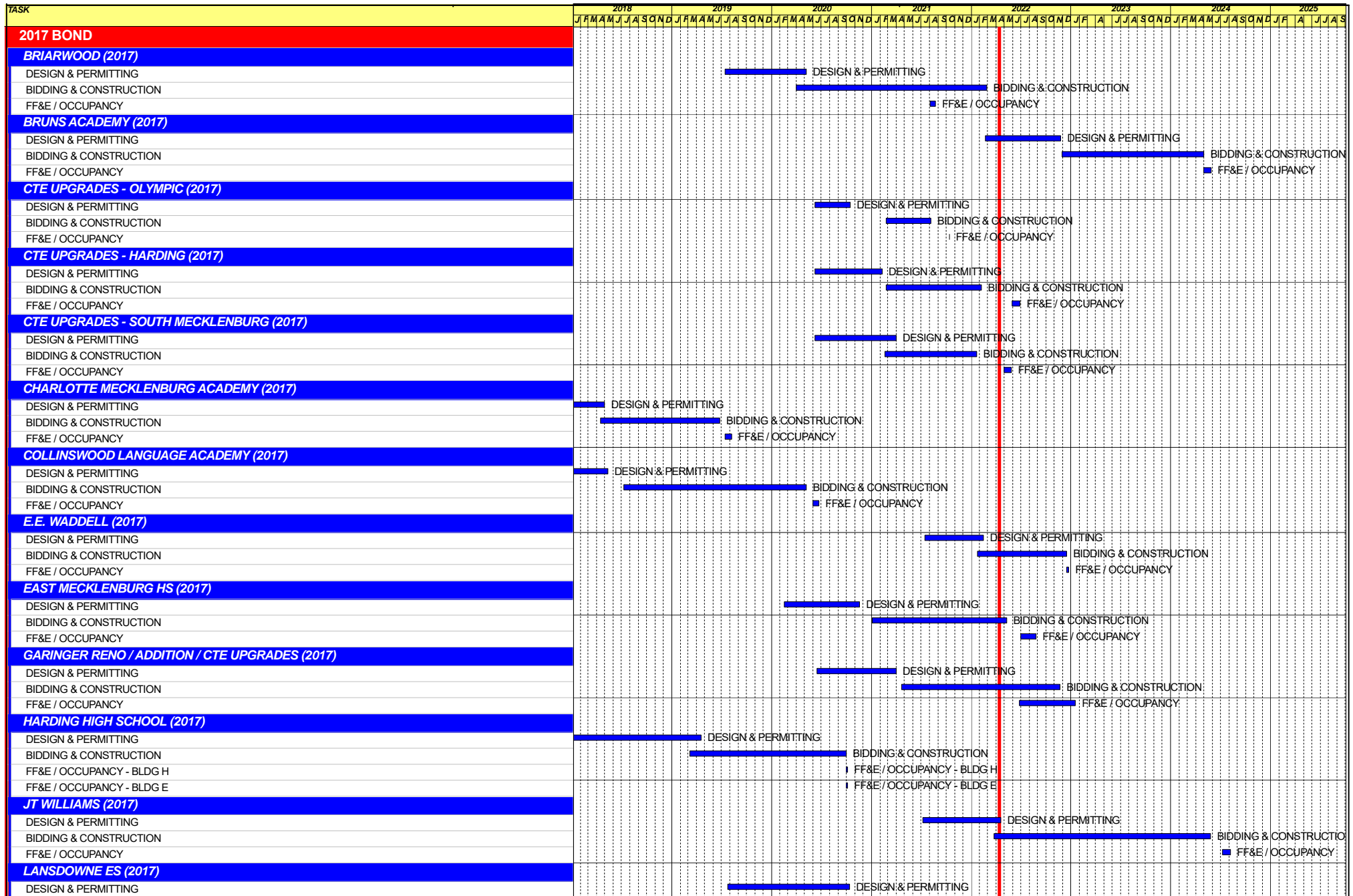
---

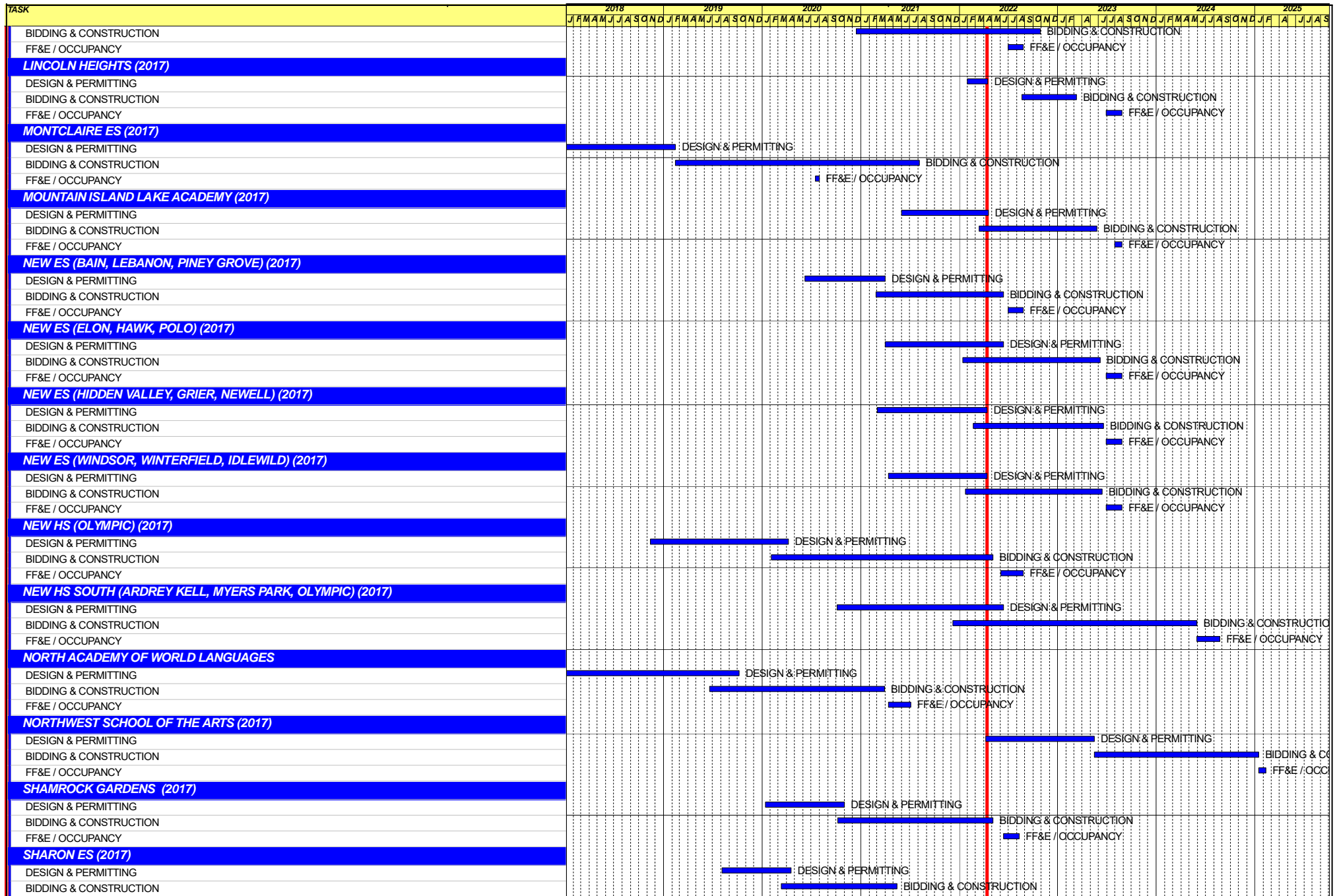
## SWING SPACE UTILIZATION

Creating a temporary space for students and staff to occupy during construction on a school’s campus has proven to be beneficial to the project’s schedule and cost and overall safety and efficiency of school operations. When the renovation or expansion of a facility is performed and the facility must remain functionally operational, there are benefits to the owner in using swing space.

We have successfully utilized both onsite and offsite swings. The most desirable swings are “offsite” ones. Onsite swing using mobiles or modulars, likewise has been successfully used. The following is a summary of current swing options planned or in use.

<u>School</u>	<u>No. of Mobiles/Relocation Site</u>	<u>Status (From – To)</u>
Shamrock	Lincoln Heights	August 2020 – August 2022







Capital Improvements Program  
***Projects in Design or Under Construction***

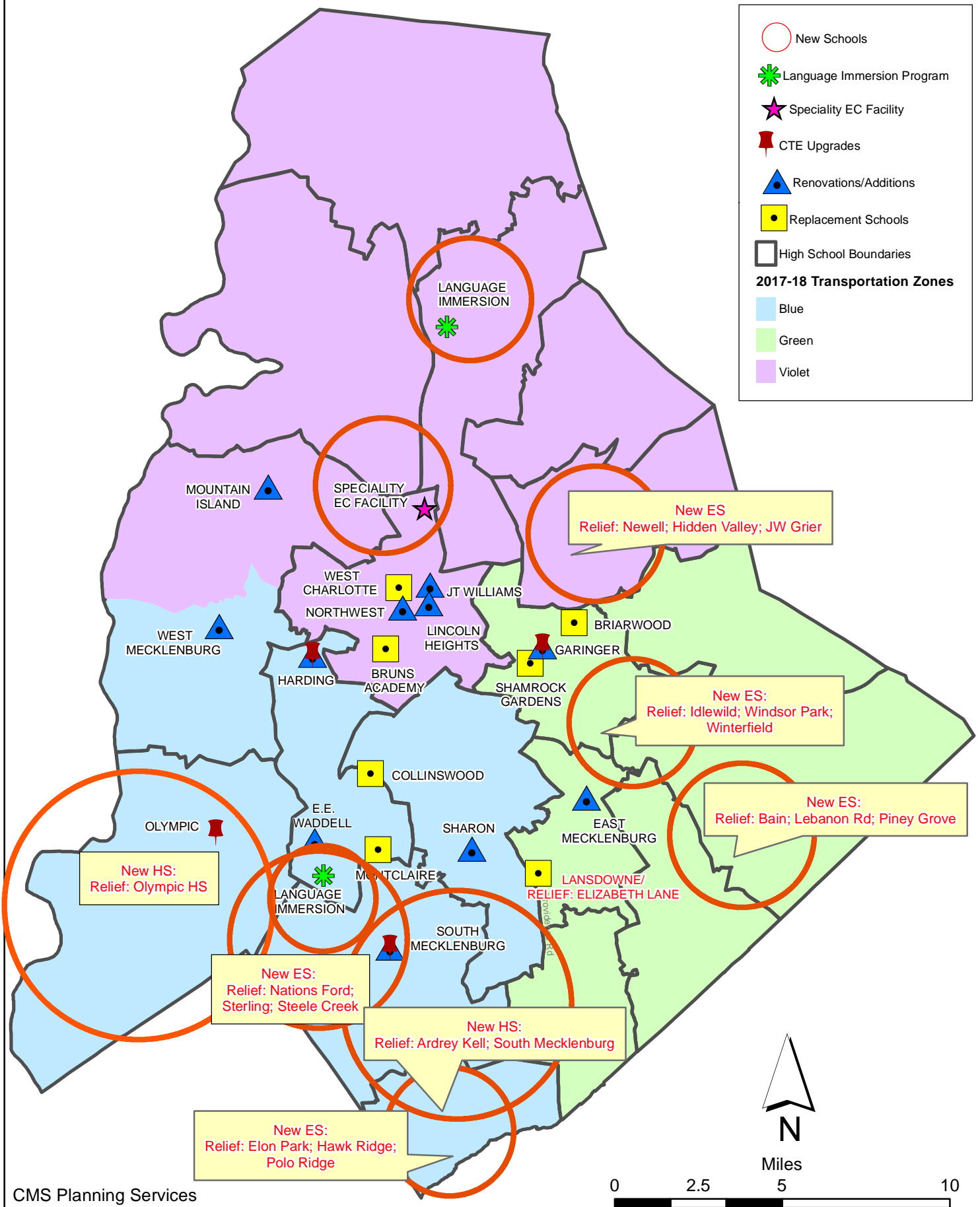
School	Architect	General Contractor/CM
<b>Projects In Design</b>		
J.T. Williams (17)	FWA	New Atlantic
Lincoln Heights Repurpose (17)	Neighboring Concepts	TBD
New Bruns Avenue ES (17)	ADW	Edifice, Inc.
Northwest School of the Arts Addition (17)	LS3P	Balfour Beatty
South Mecklenburg High School Addition (17)	Morris Berg	Balfour Beatty
<b>Projects in Bid/Award/Construction Phase</b>		
East Mecklenburg High School (17)	Morris Berg	Turner Construction
E.E. Waddell (17)	Moseley	Randolph & Sons
Garinger Addition/Renovation & CTE (17)	LS3P	Balfour Beatty
Lansdowne Elementary School Replacement (17)	Perkins Eastman	Edifice, Inc.
Mint Hill ES (17) <i>(fka Bain, Lebanon Rd, Piney Grove)</i>	FWA	Metcon
Mountain Island School (17)	ADW	Whiting-Turner
New ES (Elon, Hawk Ridge, Polo Ridge) (17)	Little Diversified	Balfour Beatty
New ES (Hidden Valley, JW Grier, Newell) (17)	ADW	Edifice, Inc.
New ES (Windsor, Winterfield, Idlewild) (17)	Neighboring Concepts	Rodgers-Holt Brothers
New HS (South, Ardrey) (17)	Ratio	Messer
Palisades High School (Olympic Relief) (17)	Little Diversified	Edifice, Inc.
Shamrock Gardens Elementary School Replacement (17)	Little Diversified	Rodgers-Holt Brothers
West Charlotte High School (17)	LS3P	Rodgers-Holt Brothers

Capital Improvements Program  
***Projects Substantially Completed/Closed \****

School	Turnover Year	Architect	General Contractor
CTE (Harding, Olympic, South) (17)	Jan-22	MPS	Branch Brownstone
Briarwood Elementary School Replacement (17)	Aug-21	ADW	New Atlantic Contracting
Montclair Elementary School (17)	Aug-21	WHN	Messer Construction
North Academy of World Languages (17)	Aug-21	ADW	New Atlantic Contracting
Sharon Elementary School (17)	Aug-21	Clark Nexsen	Samet
South Academy of International Languages (17)	Aug-21	FWA	Messer Construction
South Pine Academy (17)	Aug-21	FWA	Metcon
West Mecklenburg Gym (17)	Aug-21	Moseley	Barnhill/D.A. Everett
Collinswood Language Academy (17)	Aug-20	Perkins Eastman	Turner Construction
Harding High School Renovation (17)	Aug-20	SFLA	Barnhill Contracting
Rea Farms STEAM Academy (13)	Aug-20	Little Diversified	Balfour Beatty
Ashley Park K-8 Conversion (13)	Aug-19	ADW	Turner Construction
Druid Hills K-8 Conversion (13)	Aug-19	ADW	Edifice, Inc.
Selwyn Elementary (13)	Aug-19	Clark Nexsen	Balfour Beatty
Charlotte Mecklenburg Academy (17)	Aug-19	KSQ	Edifice, Inc.
Davidson K-8 (13)	Aug-19	Little Diversified	Gilbane
CTE - North Mecklenburg High (13)	Aug-19	LS3P	Shiel Sexton
CTE - Garinger (13)	Mar-19	LS3P	Hostetter & Son
CTE - Independence (13)	Mar-19	LS3P	D.E. Brown
CTE - West Mecklenburg (13)	Mar-19	LS3P	Hostetter & Son
Charlotte East Language Academy (13)	Aug-18	Morris Berg	Edifice, Inc
Myers Park High School Phase 3 (13)	Aug-18	Boomerang Design	BE&K
Northridge Middle (13)	Aug-18	Morris Berg	Barnhill Contracting
Myers Park High Bldg 2 (13)	Feb-18	Boomerang Design	BE&K
East Mecklenburg High Addition (13)	Jan-18	Bergman (fna Gantt Huberman)	Edifice, Inc.
J.M. Alexander Middle (13)	Aug-17	FWA Group	Balfour Beatty
Northwest School of the Arts Renovation (13)	Aug-17	Moseley	Turner Construction
Renaissance West STEAM Academy (13)	Aug-17	Little Diversified	Rodgers Construction
South Mecklenburg High Addition (13)	Jul-17	SFLA	Barnhill Contracting
Myers Park High Bldg 1 (13)	Sep-16	Boomerang	KBR
Statesville Road Elementary (13)	Aug-16	ADW	JE Dunn
Nations Ford Elementary (13)	Aug-16	Wash Hatem Nelson	Messer Construction
Olympic High Addition (13)	Aug-16	McMillan, Pazdan, Smith	Turner Construction
Lawrence Orr Elementary (07)	Aug-15	Cort Architectural Group	DH Griffin/Metcon
Parkside Elementary (07)	Aug-15	Wash Hatem Nelson	Clancy & Theys
Hawthorne High Renovations (07)	Aug-15	Morris-Berg	Balfour Beatty
Newell Elementary (07)	Aug-15	Perkins Eastman	New Atlantic Contracting
Ranson Middle (07)	Aug-15	Morris-Berg	Edifice, Inc.
Vance High	Jan-15	LS3P	Matthews Construction Co., Inc.
Garinger High - Renovations/Addition	Aug-14	Adams Group Architects	Turner Construction
Olympic High - Stadium	Aug-14	Site Solutions	Turner Construction
West Mecklenburg High - Stadium	Aug-14	Site Solutions	Turner Construction
Collinswood - Indoor Air Quality	Aug-14	PEA	The Bowers Group
Lansdowne - Indoor Air Quality	Aug-14	AeroRaq	Tyler 2
McKee Road - Indoor Air Quality	Aug-14	McCracken & Lopez	Godfrey Construction
Garinger High - Track & Field	Jul-14	Site Solutions	Turner Construction
Independence High - Gym	Jun-14	Shook Kelly	Shelco, Inc. (CM)
Palisades Park Elementary	May-14	Wash Hatem Nelson	Clancy & Theys
East Mecklenburg High Auditorium	Jan-14	Gantt Huberman Associates	Godfrey Construction Co., Inc.

*Projects closed prior to 2014 are not shown*

# CMS Capital Improvement Plan 2017 Bond Projects





# PROJECT STATUS REPORT



## Monthly Project Status 2017 Bond Summary May 2022

Project	Current Project Estimate	Project Scope	** Occupy On	Design Phase	Construction Progress	Project Status
Briarwood Elementary School (17)	\$ 31,762,730	45-classroom replacement facility; replaces school built in 1956.	August 2021	Complete	99 %	The construction manager is finalizing closeout and the return of the Park and Recreation land used during construction.
Bruns Academy (17)	\$ 43,284,927	New 45-classroom elementary school (K-5); replaces old school built in 1969.	August 2024	Design Development	0 %	The Bruns Avenue Elementary Replacement project continues to progress in the design development phase. CMS due diligence activities have advanced; additional subsurface investigations and survey work are underway. Design discussions with CDOT and Parks & Recreation continue to progress. This new 45-classroom school facility is being designed with a full size gym and associated areas in coordination with Charlotte-Mecklenburg Park & Recreation.
Career and Technology Education (17)	\$ 10,159,765	Phase I CTE upgrades at Olympic, Harding, Garinger and South Mecklenburg.	January 2022	Complete	99 %	The CTE projects at Harding and South Mecklenburg have completed the construction renovations. The contractor is still working on punch list items and a few material issues that required substitute equipment. The South Mecklenburg culinary kitchen is now open to students and staff. The project at South Mecklenburg renovated the old kitchen area into a culinary arts lab and classroom. The Harding project still has the temporary construction partition walls in place. The CTE department is working through delays with the FF&E that is planned for use in the new Harding suite. The Harding project renovated the existing classrooms in the auditorium building to develop a suite of technology classrooms.
Charlotte-Mecklenburg Academy (17)	\$ 17,699,220	New EC school located on the old Statesville Elementary School site.	August 2019	Complete	100 %	Project is complete.

# Monthly Project Status

2017 Bond Summary

May 2022

Project	Current Project Estimate	Project Scope	** Occupy On	Design Phase	Construction Progress	Project Status
Collinswood Language Academy (17)	\$ 41,422,560	New 63-classroom K-8 facility on the site of the Smith Family Center.	August 2020	Complete	100 %	Project is complete.
E.E. Waddell (17)	\$ 5,137,367	Repurpose current E.E. Waddell to reopen as a magnet high school.	August 2023	Complete	0 %	The contractor for E.E. Waddell will mobilize for construction activities in June. The work will be completed in phases; one of the first areas will be the Media Center with work on the new Maker Space.
East Mecklenburg High School (17)	\$ 10,405,411	This project will provide for the design, and construction of a new 30 classroom building.	August 2022	Complete	96 %	The construction manager for East Mecklenburg High School has reached substantial completion. The architect has developed the punch list and subcontractors are working on the items. The bus parking lot will be re-stripped in June. The FF&E deliveries are ongoing and scheduled for completion in June.
Garinger High School (17)	\$ 5,986,979	Project includes the design and construction for renovations of 300 building and a new 16 classroom building.	January 2023	Complete	66 %	The Garinger Addition and Renovation construction manager worked diligently to complete the interior finishes with final paint, flooring, toilet partitions and marker/tack boards. The mechanical, electrical, plumbing and fire protection subcontractors completed installation of receptacle cover plates, data covers, thermostats, sprinkler head covers, etc. The testing and balancing began along with the programming of building controls. The architect began the punch list of the interior and exterior of the building. The landscaper continued with installation of sod and the remaining trees and bushes.
Harding High School (17)	\$ 13,747,878	Renovation of the kitchen, cafeteria, existing gym (aux) and the addition of a new gym.	August 2020	Complete	100 %	Project is complete.
JT Williams (17)	\$ 17,432,600	Project includes building renovations to J.T. Williams Montessori magnet.	August 2024	Complete	0 %	The JT Williams Secondary Montessori project continues to progress with permit approvals. The construction manager has prepared their GMP change order documents for approval by the BOE in June. The project's base scope focuses on required civil improvements, architectural and MEP renovations in the 100 and 200 buildings. A 10-classroom modular will be used for swing and future space at the school site.

# Monthly Project Status

2017 Bond Summary

May 2022

Project	Current Project Estimate	Project Scope	** Occupy On	Design Phase	Construction Progress	Project Status
Lansdowne Elementary School (17)	\$ 34,078,834	New 45-classroom school; replaces old school built in 1959 and relieve crowding at Elizabeth Lane ES.	August 2022	Complete	84 %	The Lansdowne Elementary School construction manager continues to work on interior finishes. The VCT is being installed throughout with classroom casework following. Hard tile has been installed in the group toilets. Above ceiling work is being finalized for inspections. The site has been prepped for sod installation and exterior hardscapes including sidewalks are underway. Supply chain deliveries continue to be mitigated to maintain schedule.
Lincoln Heights Elementary School (17)	\$ 4,588,675	Repurpose and reopen as magnet school.	August 2023	Construction Documents	0 %	The Lincoln Heights Elementary project's design is being finalized and is scheduled to bid in July.
Mint Hill Elementary School (17)	\$ 30,455,951	New 45-classroom elementary school; relieves crowding at Bain, Lebanon Road, Piney Grove.	August 2022	Complete	85 %	The Mint Hill Elementary School (fka Bain, Lebanon, Piney Grove Relief) construction manager continues work on interior finishes. Hard tile in the group toilets is being finalized. Above ceiling inspections are complete in the classroom wings and tiles are being dropped. The classroom casework is also complete. The kitchen equipment is being delivered and installed according to plan. Playground equipment has been delivered and underground drainage for this area is being installed. The exterior canopies at the front drop off and bus lot have been installed. The teams continue to address supply chain issues impacting the delivery of required electrical panels and gear including substitutions and revisions to the construction sequencing.
Montclair Elementary School (17)	\$ 28,209,390	New 45-classroom replacement facility replacing school built in 1958.	August 2020	Complete	100 %	The construction manager completed the final phase of work on the project. The new 45-classroom elementary school building was occupied in August.
Mountain Island Lake Academy (17)	\$ 13,239,686	K-8 Phase 2 - New gymnasium and specialty classrooms.	August 2023	Complete	1 %	The Mountain Island Lake Academy Gym/Classroom Addition construction manager received their notice to proceed and plan to mobilize on June 9 and begin site work. They are diligently working on reviewing submittals and logistics.

# Monthly Project Status

2017 Bond Summary

May 2022

Project	Current Project Estimate	Project Scope	** Occupy On	Design Phase	Construction Progress	Project Status
New Elementary School (Elon, Hawk Ridge, Polo Relief) (17)	\$ 51,856,961	New 45-classroom elementary school to relieve Elon, Hawk Ridge, Polo.	August 2023	Complete	4 %	The New Elementary School (Elon, Hawk Ridge, Polo Relief) construction manager performed mass grading and completed the installation of the erosion control devices.
New Elementary School (Hidden Valley, JW Grier, Newell) (17)	\$ 43,579,387	New 45-classroom elementary school; relieves overcrowding at Hidden Valley, J.W. Grier, Newell.	August 2023	Complete	4 %	The New Elementary School (Hidden Valley, JW Grier, Newell Relief) construction manager has completed initial measures for erosion control including the storm water pond. The site has been cleared and grading for the building pad is ongoing. The construction team continues to work through supply chain material deliveries that includes electrical switch gear, roofing materials and storm water piping.
New Elementary School (Windsor, Winterfield, Idlewild Relief) (17)	\$ 45,297,022	New 45-classroom elementary school to relieve Windsor, Winterfield, and Idlewild ES.	August 2023	Complete	2 %	The New Elementary School (Windsor Park, Winterfield, Idlewild Relief) construction manager has mobilized on site. The initial erosion control measures are being installed and perimeter fencing is progressing.
New High School (South, Ardrey) (17)	\$ 158,786,358	New 100 classroom high school to relieve South Mecklenburg, Ardrey Kell and Myers Park HS.	August 2024	Complete	3 %	The New High School (South, Ardrey Relief) construction manager continues with installations of the erosion control measures and detention ponds. As areas were cleared explorations were performed in preparation for the removal of rock.
North Academy of World Languages (17)	\$ 42,198,909	New 66 classroom K-8 Language Immersion facility located on the old J.M. Alexander Middle School site.	August 2021	Complete	100 %	Project is complete.
Northwest School of the Arts (17)	\$ 20,467,000	Replace classroom building built in 1952 and build classroom addition that supports program.	August 2024	Not Started	0 %	The Northwest School of the Arts addition project is in the pre-schematic design phase.
Palisades High School (17)	\$ 108,908,793	New 100 classroom high school; relieves crowding at Olympic High School.	August 2022	Complete	98 %	The construction manager for the Palisades High School (fka New High School Olympic Relief) received a temporary certificate of occupancy for the building and FF&E installations have stated. The security and camera systems were brought online allowing move-in operations to begin. The contractor continues to finalize cleaning and miscellaneous components throughout the building along and is completing the punch list.

# Monthly Project Status

2017 Bond Summary

May 2022

Project	Current Project Estimate	Project Scope	** Occupy On	Design Phase	Construction Progress	Project Status
Shamrock Gardens Elementary School (17)	\$ 31,358,351	New 45-classroom replacement facility.	August 2022	Complete	99 %	The Shamrock Gardens Elementary School construction manager received a temporary certificate of occupancy for the building. The contractor is now focused on the punch list and the final closeout documents.
Sharon Elementary School (17)	\$ 9,125,862	Add 16 classroom building and increase capacity of cafeteria.	August 2021	Complete	100 %	Project is complete.
South Academy of International Languages (fka New K-8 School (South) (17)	\$ 41,209,367	New 71 classroom K-8 Language Immersion facility located on the old Nations Ford Elementary School site.	August 2021	Complete	100 %	Project is complete.
South Mecklenburg High School (17)	\$ 15,622,927	Renovate/replace two classroom buildings built in 1958 to upgrade learning conditions.	January 2025	Not Started	0 %	The South Mecklenburg High School addition project is in the pre-schematic design phase.
South Pine Academy (17)	\$ 30,822,550	New 45-classroom elementary school to relieve Nations Ford, Sterling, and Steele Creek.	August 2021	Complete	100 %	Project is complete.
West Charlotte High School (17)	\$ 105,977,166	New 100 classroom school to replace current facility built in 1954.	August 2022	Complete	85 %	The trade contractors continue to work throughout the West Charlotte High School facility. Final finishes have been installed allowing floor waxing and construction cleaning to progress. Building Standards is completing required inspections for occupancy approvals. The architect and engineers are completing punch list inspections allowing subcontractors to repair any issues. The bus lot has been paved and striped. The stadium field will be used for summer football practice sessions and athletic storage. FF&E move from the existing facility and new FF&E installation will begin in June. The team continues to work with school administration on the transition from Phase 1 to Phase 2 construction.
West Mecklenburg High School (17)	\$ 6,457,359	Provide new gymnasium, the existing gymnasium will become the auxilliary.	August 2021	Complete	100 %	Project is complete.

# MONTHLY PROJECT PHOTOS

## PROJECT PROGRESS PHOTOS

---



Palisades High School



## PROJECT PROGRESS PHOTOS

---



Palisades High School

## PROJECT PROGRESS PHOTOS

---



Palisades High School



## PROJECT PROGRESS PHOTOS

---



Palisades High School



## PROJECT PROGRESS PHOTOS

---



West Charlotte High School Replacement



## PROJECT PROGRESS PHOTOS

---



West Charlotte High School Replacement



West Charlotte High School Replacement



## PROJECT PROGRESS PHOTOS

---



West Charlotte High School Replacement

## PROJECT PROGRESS PHOTOS

---



West Charlotte High School Replacement



## PROJECT PROGRESS PHOTOS

---



Shamrock Gardens Elementary School

## PROJECT PROGRESS PHOTOS

---



Shamrock Gardens Elementary School



## PROJECT PROGRESS PHOTOS

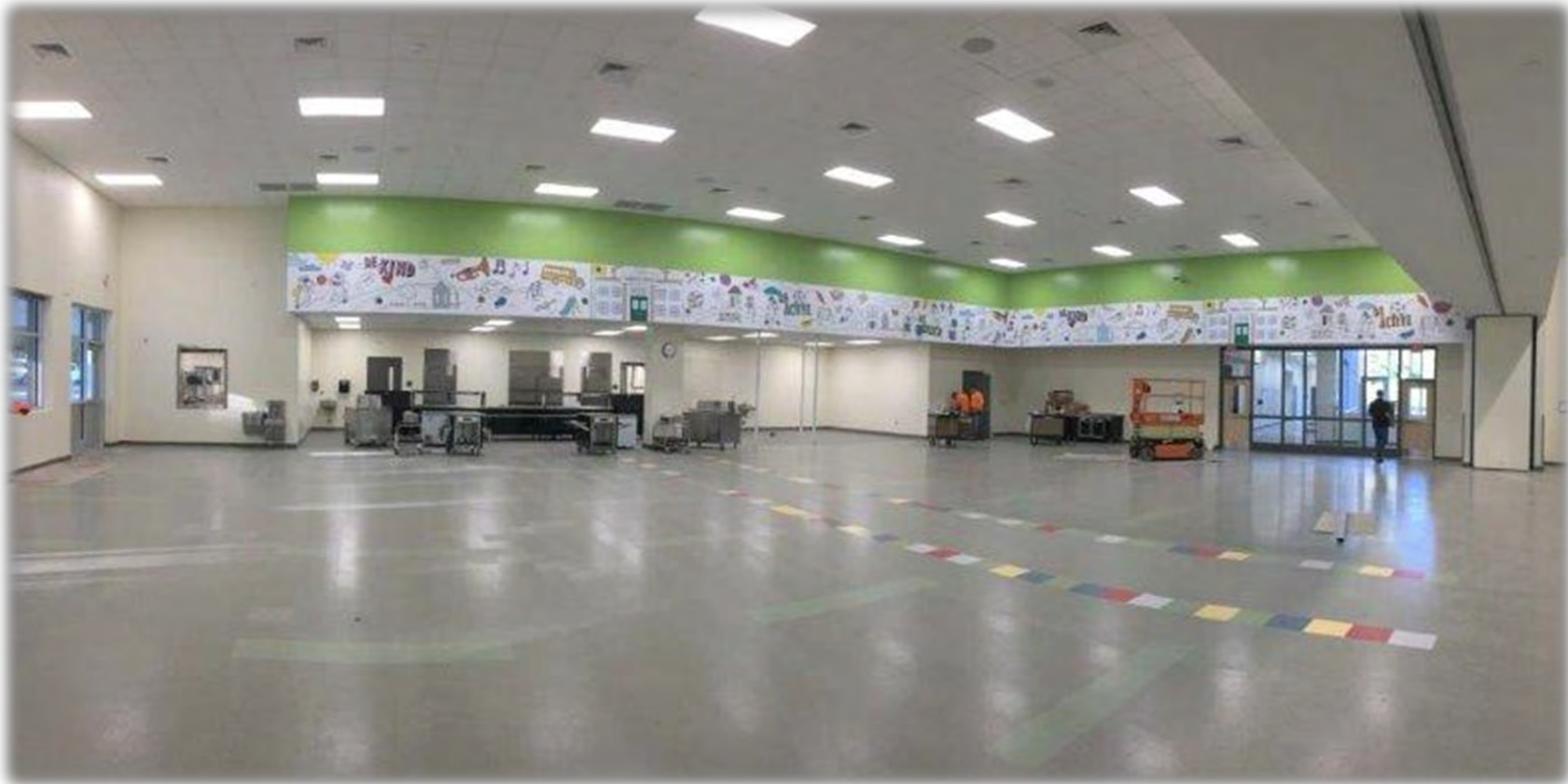
---



Shamrock Gardens Elementary School

## PROJECT PROGRESS PHOTOS

---



Shamrock Gardens Elementary School

## PROJECT PROGRESS PHOTOS

---



Lansdowne Elementary School



## PROJECT PROGRESS PHOTOS

---



Lansdowne Elementary School

## PROJECT PROGRESS PHOTOS

---



Lansdowne Elementary School



## PROJECT PROGRESS PHOTOS

---



Lansdowne Elementary School



## PROJECT PROGRESS PHOTOS

---



East Mecklenburg High School

## PROJECT PROGRESS PHOTOS

---



East Mecklenburg High School

## PROJECT PROGRESS PHOTOS

---



East Mecklenburg High School



## PROJECT PROGRESS PHOTOS

---



Mint Hill Elementary School

## PROJECT PROGRESS PHOTOS

---



Mint Hill Elementary School

## PROJECT PROGRESS PHOTOS

---



Mint Hill Elementary School



## PROJECT PROGRESS PHOTOS

---



Mint Hill Elementary School

## PROJECT PROGRESS PHOTOS

---



Garinger High School



## PROJECT PROGRESS PHOTOS

---



Garinger High School

## PROJECT PROGRESS PHOTOS

---



Garinger High School

# MWSBE PARTICIPATION REPORT

# Contract Status Report - MWSBE Participation Commitments

Report Date 6/8/2022

Charlotte-Mecklenburg Schools

6/8/2022 3:09:19 PM

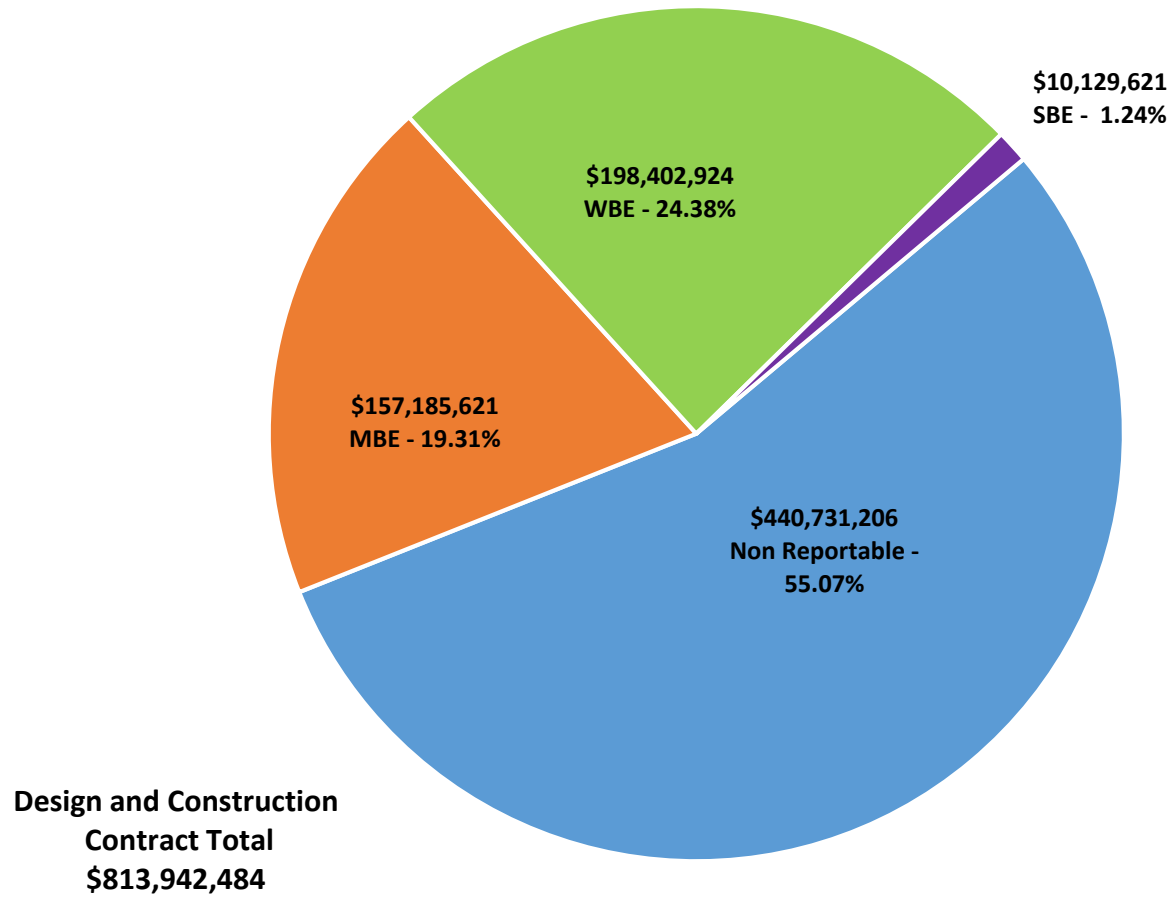
2017 Bond Projects

May 2022 Monthly Bond Report

Facility	Contract Amount	African American MBE\$	%	Other MBE \$	%	Total MBE \$	%	Other WBE \$	%	Other SBE \$	%	Total	%
<u>Briarwood Elementary School (17)</u>	\$28,723,186	\$4,020,515	14.00%	\$1,610,132	5.61%	\$5,630,647	19.60%	\$2,143,102	7.46%	\$182,300	0.63%	\$7,956,049	27.70%
<u>Career and Technology Education (1</u>	\$5,926,589	\$525,859	8.87%	\$292,652	4.94%	\$818,511	13.81%	\$204,477	3.45%	\$63,430	1.07%	\$1,086,418	18.33%
<u>Charlotte-Mecklenburg Academy (17</u>	\$17,035,852	\$198,536	1.17%	\$1,029,192	6.04%	\$1,227,728	7.21%	\$872,755	5.12%	\$13,200	0.08%	\$2,113,683	12.41%
<u>Collinswood Language Academy (17)</u>	\$38,527,740	\$649,287	1.69%	\$1,613,103	4.19%	\$2,262,390	5.87%	\$11,362,566	29.49%	\$9,328	0.02%	\$13,634,284	35.39%
<u>E.E. Waddell (17)</u>	\$1,967,137	\$0	0.00%	\$0	0.00%	\$0	0.00%	\$10,950	0.56%	\$0	0.00%	\$10,950	0.56%
<u>East Mecklenburg High School (17)</u>	\$12,676,283	\$603,811	4.76%	\$532,460	4.20%	\$1,136,271	8.96%	\$490,382	3.87%	\$681,075	5.37%	\$2,307,728	18.21%
<u>Garinger High School (17)</u>	\$4,240,502	\$228,140	5.38%	\$1,032,839	24.36%	\$1,260,979	29.74%	\$604,673	14.26%	\$499,000	11.77%	\$2,364,652	55.76%
<u>Harding High School (17)</u>	\$13,015,986	\$1,504,505	11.56%	\$310,356	2.38%	\$1,814,862	13.94%	\$3,846,831	29.55%	\$176	0.00%	\$5,661,869	43.50%
<u>JT Williams (17)</u>	\$2,530,358	\$2,000	0.08%	\$20,000	0.79%	\$22,000	0.87%	\$0	0.00%	\$51,800	2.05%	\$73,800	2.92%
<u>Lansdowne Elementary School (17)</u>	\$30,701,909	\$2,255,059	7.35%	\$498,305	1.62%	\$2,753,364	8.97%	\$2,339,232	7.62%	\$223,625	0.73%	\$5,316,221	17.32%
<u>Lincoln Heights Elementary School (1</u>	\$454,706	\$92,274	20.29%	\$18,800	4.13%	\$111,074	24.43%	\$0	0.00%	\$74,503	16.38%	\$185,577	40.81%
<u>Mint Hill Elementary School (17)</u>	\$26,367,490	\$4,678,087	17.74%	\$18,825,991	71.40%	\$23,504,078	89.14%	\$1,240,643	4.71%	\$308,680	1.17%	\$25,053,401	95.02%
<u>Montclair Elementary School (17)</u>	\$26,093,784	\$3,617,952	13.87%	\$2,260,381	8.66%	\$5,878,333	22.53%	\$5,729,641	21.96%	\$518,632	1.99%	\$12,126,605	46.47%
<u>Mountain Island Lake Academy (17)</u>	\$12,361,134	\$0	0.00%	\$36,650	0.30%	\$36,650	0.30%	\$29,650	0.24%	\$15,300	0.12%	\$81,600	0.66%
<u>New Elementary School (Elon, Hawk</u>	\$37,291,139	\$5,569,267	14.93%	\$2,413,545	6.47%	\$7,982,812	21.41%	\$7,990,684	21.43%	\$145,500	0.39%	\$16,118,996	43.22%
<u>New Elementary School (Hidden Vall</u>	\$38,642,060	\$5,493,635	14.22%	\$4,211,754	10.90%	\$9,705,389	25.12%	\$2,237,544	5.79%	\$25,600	0.07%	\$11,968,533	30.97%
<u>New Elementary School (Windsor, W</u>	\$41,201,074	\$8,807,507	21.38%	\$3,356,831	8.15%	\$12,164,338	29.52%	\$26,169,724	63.52%	\$302,949	0.74%	\$38,637,011	93.78%
<u>New High School (South, Ardrey) (17</u>	\$132,651,546	\$1,867,976	1.41%	\$3,365,372	2.54%	\$5,233,348	3.95%	\$7,188,271	5.42%	\$3,913,152	2.95%	\$16,334,771	12.31%
<u>North Academy of World Languages</u>	\$38,090,783	\$1,688,775	4.43%	\$1,575,863	4.14%	\$3,264,638	8.57%	\$3,471,693	9.11%	\$437,418	1.15%	\$7,173,748	18.83%
<u>Northwest School of the Arts (17)</u>	\$1,327,480	\$0	0.00%	\$0	0.00%	\$0	0.00%	\$0	0.00%	\$0	0.00%	\$0	0.00%
<u>Palisades High School (17)</u>	\$98,207,798	\$13,345,487	13.59%	\$5,874,324	5.98%	\$19,219,811	19.57%	\$8,478,293	8.63%	\$766,550	0.78%	\$28,464,654	28.98%
<u>Shamrock Gardens Elementary Scho</u>	\$28,032,340	\$2,366,885	8.44%	\$1,469,007	5.24%	\$3,835,892	13.68%	\$23,207,193	82.79%	\$274,496	0.98%	\$27,317,581	97.45%
<u>Sharon Elementary School (17)</u>	\$8,525,796	\$326,844	3.83%	\$283,497	3.33%	\$610,341	7.16%	\$926,873	10.87%	\$217,984	2.56%	\$1,755,197	20.59%
<u>South Academy of International Lan</u>	\$37,082,033	\$6,023,141	16.24%	\$2,431,071	6.56%	\$8,454,212	22.80%	\$10,755,611	29.00%	\$347,799	0.94%	\$19,557,622	52.74%

Facility	Contract Amount	African American MBE\$	%	Other MBE \$	%	Total MBE \$	%	Other WBE \$	%	Other SBE \$	%	Total	%
<u>South Mecklenburg High School (17)</u>	\$1,092,197	\$0	0.00%	\$0	0.00%	\$0	0.00%	\$0	0.00%	\$0	0.00%	\$0	0.00%
<u>South Pine Academy (17)</u>	\$26,205,173	\$916,165	3.50%	\$19,205,893	73.29%	\$20,122,058	76.79%	\$4,342,256	16.57%	\$237,754	0.91%	\$24,702,068	94.26%
<u>West Charlotte High School (17)</u>	\$95,161,018	\$15,398,459	16.18%	\$3,944,225	4.14%	\$19,342,684	20.33%	\$72,696,129	76.39%	\$535,596	0.56%	\$92,574,409	97.28%
<u>West Mecklenburg High School (17)</u>	\$9,809,391	\$283,809	2.89%	\$509,403	5.19%	\$793,212	8.09%	\$2,063,752	21.04%	\$283,775	2.89%	\$3,140,739	32.02%
<b>Grandtotal</b>	\$813,942,484	\$80,463,975	9.89%	\$76,721,646	9.43%	\$157,185,621	19.31%	\$198,402,924	24.38%	\$10,129,621	1.24%	\$365,718,166	44.93%

## MWSBE Participation 2017 Bond Projects



# PROJECT CONTROLS

**CHARLOTTE-MECKLENBURG BOARD OF EDUCATION**  
**2013 BOND SERIES-CAPITAL IMPROVEMENT PROGRAM**  
**BUDGET STATUS REPORT**

	Original Project Budget	Current Project Budget	Committed Amount	Approved Change Orders	Total Committed	Pending Commitments	To Be Committed	Prev Paid To Date	Paid To Date	Balance To Complete	Monthly Expenditure
	(A)	(B)	(C)	(D)	(E)=C+D	(F)	(G)=(B-E-F)	(H)	(I)	(J)=(B-I)	(K)=(I-H)
<b><u>A. REPLACEMENT &amp; RENOVATIONS</u></b>											
1 Career & Technology Education Institutes Phase 1:	\$8,640,000	\$18,697,857	\$6,963,309	\$11,734,547	\$18,697,857	\$0	\$1	\$13,807,838	\$14,427,102	\$4,270,755	\$619,264
2 Davidson K-8 Conversion	\$9,500,000	\$13,461,149	\$2,131,151	\$11,329,998	\$13,461,149	\$0	\$0	\$13,461,149	\$13,461,149	\$0	\$0
3 J.M. Alexander Middle Replacement	\$30,672,000	\$29,845,539	\$4,502,518	\$25,343,021	\$29,845,539	\$0	\$0	\$29,845,539	\$29,845,539	\$0	\$0
4 Nations Ford Elementary Replacement	\$19,440,000	\$19,231,604	\$3,958,871	\$15,272,733	\$19,231,604	\$0	\$0	\$19,231,604	\$19,231,604	\$0	\$0
5 Northwest School of the Arts	\$12,420,000	\$12,868,718	\$2,047,917	\$10,820,801	\$12,868,718	\$0	\$0	\$12,868,719	\$12,868,719	\$0	\$0
6 Oakhurst STEAM Magnet Elementary/Starmount	\$5,940,000	\$5,407,812	\$3,471,397	\$1,936,415	\$5,407,812	\$0	\$0	\$5,407,812	\$5,407,812	\$0	\$0
7 Pre-K-8 Conversions Phase II: Ashley Park/ Bruns	\$24,732,000	\$19,700,807	\$4,167,671	\$15,533,138	\$19,700,809	\$0	\$0	\$19,700,807	\$19,700,807	\$0	\$0
8 Selwyn Elementary	\$2,592,000	\$4,624,831	\$744,799	\$3,880,032	\$4,624,831	\$0	\$0	\$4,624,831	\$4,624,831	\$0	\$0
9 Statesville Road Elementary	\$20,340,000	\$20,648,509	\$5,081,473	\$15,567,037	\$20,648,509	\$0	\$0	\$20,648,509	\$20,648,509	\$0	\$0
10 West Mecklenburg HS	\$0	\$3,993,543	\$3,993,543	\$0	\$3,993,543	\$0	\$0	\$3,993,543	\$3,993,543	\$0	\$0
<b>Total Replacement &amp; Renovations</b>	<b>\$134,276,000</b>	<b>\$148,480,367</b>	<b>\$37,062,648</b>	<b>\$111,417,722</b>	<b>\$148,480,370</b>	<b>\$0</b>	<b>\$2</b>	<b>\$143,590,350</b>	<b>\$144,209,614</b>	<b>\$4,270,753</b>	<b>\$619,264</b>
<b><u>B. RESPONSE TO ENROLLMENT GROWTH</u></b>											
1 East Mecklenburg High Addition	\$12,744,000	\$12,083,804	\$4,465,200	\$7,618,603	\$12,083,803	\$0	\$0	\$12,083,803	\$12,083,803	\$0	\$0
2 Myers Park High Addition	\$22,248,000	\$11,040,942	\$1,207,493	\$9,833,448	\$11,040,942	\$0	\$0	\$11,040,941	\$11,040,941	\$0	\$0
3 Northridge Middle Addition	\$6,448,000	\$6,366,170	\$2,114,306	\$4,251,865	\$6,366,171	\$0	\$0	\$6,366,171	\$6,366,171	\$0	\$0
4 Olympic High Addition/Renovation	\$8,964,000	\$8,947,310	\$2,002,694	\$6,944,615	\$8,947,310	\$0	\$0	\$8,947,310	\$8,947,310	\$0	\$0
5 South Mecklenburg High Addition	\$18,360,000	\$16,307,355	\$2,922,282	\$13,385,073	\$16,307,355	\$0	\$0	\$16,307,355	\$16,307,355	\$0	\$0
6 Charlotte East Language Academy (FKA -New Lang	\$30,376,000	\$31,387,929	\$5,740,182	\$25,647,747	\$31,387,929	\$0	\$0	\$31,387,929	\$31,387,929	\$0	\$0
7 Rea Farms STEAM Academy	\$31,376,000	\$40,476,000	\$9,062,022	\$30,187,065	\$39,249,087	(\$5,460)	\$1,232,373	\$38,889,267	\$38,898,906	\$1,577,094	\$9,639
8 Renaissance West STEAM Academy (FKA New Pre-	\$30,376,000	\$31,698,952	\$5,667,388	\$26,031,564	\$31,698,952	\$0	\$0	\$31,698,952	\$31,698,952	\$0	\$0
9 New High School - South Meck/Ardrey Kell Relief *	\$0	\$9,278,699	\$9,278,699	\$0	\$9,278,699	\$0	\$0	\$9,278,699	\$9,278,699	\$0	\$0
<b>Total Response to Enrollment Growth</b>	<b>\$160,892,000</b>	<b>\$167,587,161</b>	<b>\$42,460,267</b>	<b>\$123,899,981</b>	<b>\$166,360,248</b>	<b>(\$5,460)</b>	<b>\$1,232,373</b>	<b>\$166,000,427</b>	<b>\$166,010,066</b>	<b>\$1,577,095</b>	<b>\$9,639</b>
<b><u>C. CONTINGENCY</u></b>											
	\$0	\$0	\$0	\$0	\$0	\$0	\$0	\$0	\$0	\$0	\$0
<b>Total Contingency</b>	<b>\$0</b>	<b>\$0</b>	<b>\$0</b>	<b>\$0</b>	<b>\$0</b>	<b>\$0</b>	<b>\$0</b>	<b>\$0</b>	<b>\$0</b>	<b>\$0</b>	<b>\$0</b>
<b>TOTAL LOCAL BOND PROGRAM</b>	<b>\$295,168,000</b>	<b>\$316,067,527</b>	<b>\$79,522,915</b>	<b>\$235,317,703</b>	<b>\$314,840,618</b>	<b>(\$5,460)</b>	<b>\$1,232,375</b>	<b>\$309,590,777</b>	<b>\$310,219,680</b>	<b>\$5,847,847</b>	<b>\$628,903</b>

Original project estimated costs approved by the Board Of Education on July 23, 2013 and approved by the voters of Mecklenburg County on November 5, 2013.

Note: Mecklenburg County's appropriated interest from COPS to increase funding for the 2013 Bond Program.



CHARLOTTE-MECKLENBURG BOARD OF EDUCATION  
2017 BOND SERIES-CAPITAL IMPROVEMENT PROGRAM  
BUDGET STATUS REPORT

	Original Project Budget	Current Project Budget	Committed Amount	Approved Change Orders	Total Committed	Pending Commitments	To Be Committed	Prev Paid To Date	Paid To Date	Balance To Complete	Monthly Expenditure
	(A)	(B)	(C)	(D)	(E)=C+D	(F)	(G)=(B-E-F)	(H)	(I)	(J)=(B-I)	(K)=(I-H)
<b><u>A. REPLACEMENT &amp; RENOVATIONS</u></b>											
1 Briarwood Elementary *	\$29,091,619	\$31,762,730	\$4,780,835	\$26,609,642	\$31,390,476	\$0	\$372,254	\$31,004,857	\$31,018,829	\$743,901	\$13,972
2 Bruns Academy Replacement	\$34,207,808	\$43,284,927	\$3,756,747	\$218,050	\$3,974,797	\$0	\$39,310,131	\$94,900	\$475,450	\$42,809,477	\$380,550
3 Career & Technology Education Upgrades	\$10,101,734	\$10,159,765	\$2,293,944	\$4,099,152	\$6,393,096	\$77,334	\$3,689,335	\$5,184,523	\$5,300,857	\$4,858,908	\$116,334
4 Collinswood K-8 *	\$44,172,540	\$41,422,560	\$4,927,491	\$36,495,069	\$41,422,560	\$0	\$0	\$41,392,349	\$41,392,349	\$30,211	\$0
5 East Mecklenburg HS	\$12,771,594	\$10,405,411	(\$1,567,324)	\$11,881,417	\$10,314,093	\$20,500	\$70,818	\$7,610,058	\$8,530,714	\$1,874,697	\$920,656
6 Garinger HS	\$13,936,979	\$5,986,979	\$1,633,012	\$3,475,359	\$5,108,371	\$9,250	\$869,358	\$2,271,990	\$2,459,536	\$3,527,443	\$187,547
7 Harding University High *	\$18,330,263	\$13,747,878	\$2,045,267	\$11,702,610	\$13,747,877	\$0	\$0	\$13,747,877	\$13,747,877	\$0	\$0
8 Charlotte-Mecklenburg Academy (FKA -EC Specialty	\$18,957,960	\$17,699,220	\$2,175,504	\$15,523,717	\$17,699,220	\$0	\$0	\$17,699,220	\$17,699,220	\$0	\$0
9 Lansdowne Elementary	\$29,391,270	\$34,078,834	\$4,177,414	\$29,467,186	\$33,644,599	\$106,542	\$327,693	\$23,223,709	\$24,496,054	\$9,582,780	\$1,272,344
10 Lincoln Heights Elementary	\$3,740,478	\$4,588,675	\$577,649	\$49,054	\$626,703	\$0	\$3,961,972	\$400,390	\$402,042	\$4,186,633	\$1,652
11 Montclair Elementary Replacement *	\$28,559,390	\$28,209,390	\$2,426,761	\$25,782,629	\$28,209,390	\$0	\$1	\$28,188,096	\$28,188,096	\$21,295	\$0
12 Mountain Island k-8	\$9,218,439	\$13,239,686	\$1,443,210	\$11,344,864	\$12,788,074	\$0	\$451,612	\$537,358	\$544,687	\$12,694,999	\$7,328
13 Northwest School of the Arts	\$17,632,202	\$20,467,000	\$2,060,482	\$117,644	\$2,178,126	\$0	\$18,288,874	\$48,460	\$49,726	\$20,417,274	\$1,266
14 Shamrock Gardens Elementary *	\$29,890,351	\$31,358,351	\$3,743,795	\$27,153,983	\$30,897,778	\$18,500	\$442,073	\$23,857,027	\$23,941,293	\$7,417,058	\$84,266
15 Sharon Elementary	\$7,706,528	\$9,125,862	\$1,443,456	\$7,666,984	\$9,110,441	\$0	\$15,421	\$9,047,784	\$9,047,784	\$78,078	\$0
16 South Mecklenburg HS	\$13,352,143	\$15,622,927	\$1,653,335	\$94,238	\$1,747,573	\$0	\$13,875,354	\$2,834	\$2,834	\$15,620,093	\$0
17 E.E. Waddell Magnet HS	\$4,571,709	\$5,137,367	\$2,172,119	\$0	\$2,172,119	\$0	\$2,965,248	\$106,814	\$106,814	\$5,030,553	\$0
18 West Charlotte HS Replacement	\$109,977,166	\$105,977,166	\$12,324,331	\$91,448,524	\$103,772,854	\$151,950	\$2,052,362	\$76,264,992	\$78,227,962	\$27,749,204	\$1,962,970
19 West Mecklenburg HS	\$11,065,440	\$6,457,359	(\$2,367,345)	\$8,670,708	\$6,303,362	\$0	\$153,997	\$6,260,309	\$6,260,309	\$197,050	\$0
20 John Taylor Williams	\$13,964,339	\$17,432,600	\$3,103,351	\$21,670	\$3,125,021	\$0	\$14,307,579	\$690,914	\$734,491	\$16,698,109	\$43,576
<b>Total Replacement &amp; Renovations</b>	<b>\$460,639,952</b>	<b>\$466,164,687</b>	<b>\$52,804,033</b>	<b>\$311,822,499</b>	<b>\$364,626,532</b>	<b>\$384,076</b>	<b>\$101,154,081</b>	<b>\$287,634,460</b>	<b>\$292,626,923</b>	<b>\$173,537,765</b>	<b>\$4,992,463</b>
<b><u>B. RESPONSE TO ENROLLMENT GROWTH</u></b>											
1 South Academy of International Languages	\$45,359,367	\$41,209,367	\$6,046,436	\$35,050,079	\$41,096,515	\$0	\$112,852	\$40,552,430	\$40,557,324	\$652,043	\$4,894
2 North Academy of World Languages (FKA - New K-8	\$45,359,367	\$42,198,909	\$6,022,055	\$35,999,788	\$42,021,844	\$0	\$177,065	\$41,622,847	\$41,641,869	\$557,040	\$19,023
3 South Pine Academy (FKA - New ES Nations Ford, S	\$29,173,829	\$30,822,550	\$6,793,874	\$24,015,688	\$30,809,562	\$0	\$12,987	\$30,429,342	\$30,445,233	\$377,317	\$15,890
4 Mint Hill Elementary School	\$29,988,332	\$30,455,951	\$3,559,642	\$26,609,941	\$30,169,584	\$29,786	\$256,582	\$18,105,649	\$20,356,530	\$10,099,421	\$2,250,881
5 New Elementary School - Windsor Park Relief *	\$30,422,230	\$45,297,022	\$11,087,934	\$31,659,394	\$42,747,328	\$0	\$2,549,694	\$3,555,575	\$3,683,616	\$41,613,406	\$128,040
6 New Elementary School - Elon/Hawk Ridge Relief *	\$30,426,712	\$51,856,962	\$14,220,654	\$35,170,706	\$49,391,360	\$0	\$2,465,602	\$12,114,717	\$12,286,112	\$39,570,850	\$171,395
7 New Elementary School - Hidden Valley Relief	\$30,518,345	\$43,579,387	\$4,439,505	\$36,548,935	\$40,988,440	\$0	\$2,590,947	\$2,415,448	\$2,448,356	\$41,131,031	\$32,908
8 Palisades High School	\$109,908,793	\$108,908,793	\$11,326,834	\$97,051,295	\$108,378,130	\$59,962	\$468,701	\$89,019,791	\$92,310,341	\$16,598,452	\$3,290,550
9 New High School - South Meck/Ardrey Kell Relief *	\$110,287,621	\$158,786,358	\$12,430,243	\$125,624,701	\$138,054,944	\$0	\$20,731,414	\$5,822,460	\$9,331,390	\$149,454,968	\$3,508,931
<b>Total Response to Enrollment Growth</b>	<b>\$461,444,596</b>	<b>\$553,115,298</b>	<b>\$75,927,177</b>	<b>\$447,730,529</b>	<b>\$523,657,706</b>	<b>\$89,748</b>	<b>\$29,365,845</b>	<b>\$243,638,259</b>	<b>\$253,060,770</b>	<b>\$300,054,528</b>	<b>\$9,422,511</b>
<b><u>C. CONTINGENCY</u></b>											
	\$0	\$0	\$0	\$0	\$0	\$0	\$0	\$0	\$0	\$0	\$0
<b>Total Contingency</b>	<b>\$0</b>	<b>\$0</b>	<b>\$0</b>	<b>\$0</b>	<b>\$0</b>	<b>\$0</b>	<b>\$0</b>	<b>\$0</b>	<b>\$0</b>	<b>\$0</b>	<b>\$0</b>

CHARLOTTE-MECKLENBURG BOARD OF EDUCATION  
2017 BOND SERIES-CAPITAL IMPROVEMENT PROGRAM  
BUDGET STATUS REPORT

	Original Project Budget	Current Project Budget	Committed Amount	Approved Change Orders	Total Committed	Pending Commitments	To Be Committed	Prev Paid To Date	Paid To Date	Balance To Complete	Monthly Expenditure
	(A)	(B)	(C)	(D)	(E)=C+D	(F)	(G)=(B-E-F)	(H)	(I)	(J)=(B-I)	(K)=(I-H)
TOTAL LOCAL BOND PROGRAM	\$922,084,548	\$1,019,279,985	\$128,731,210	\$759,553,028	\$888,284,238	\$473,824	\$130,519,926	\$531,272,719	\$545,687,693	\$473,592,293	\$14,414,974

Original project estimated costs approved by the Board Of Education on July 25, 2017 approved by the voters of Mecklenburg County on November 7, 2017.

\*Project included in \$33.2M early funding approved by Board Of Education on August 9, 2016 and Mecklenburg Board of County Commissioners on September 6, 2016. On February 19, 2019 an additional \$8M was approved for New Elementary School - Elon/Hawk Ridge Relief site.

\*Current Budget includes an additional \$89.2M to fund increase land and construction costs. The additional funds were approved by the Board of County Commissioners on June 16, 2020.

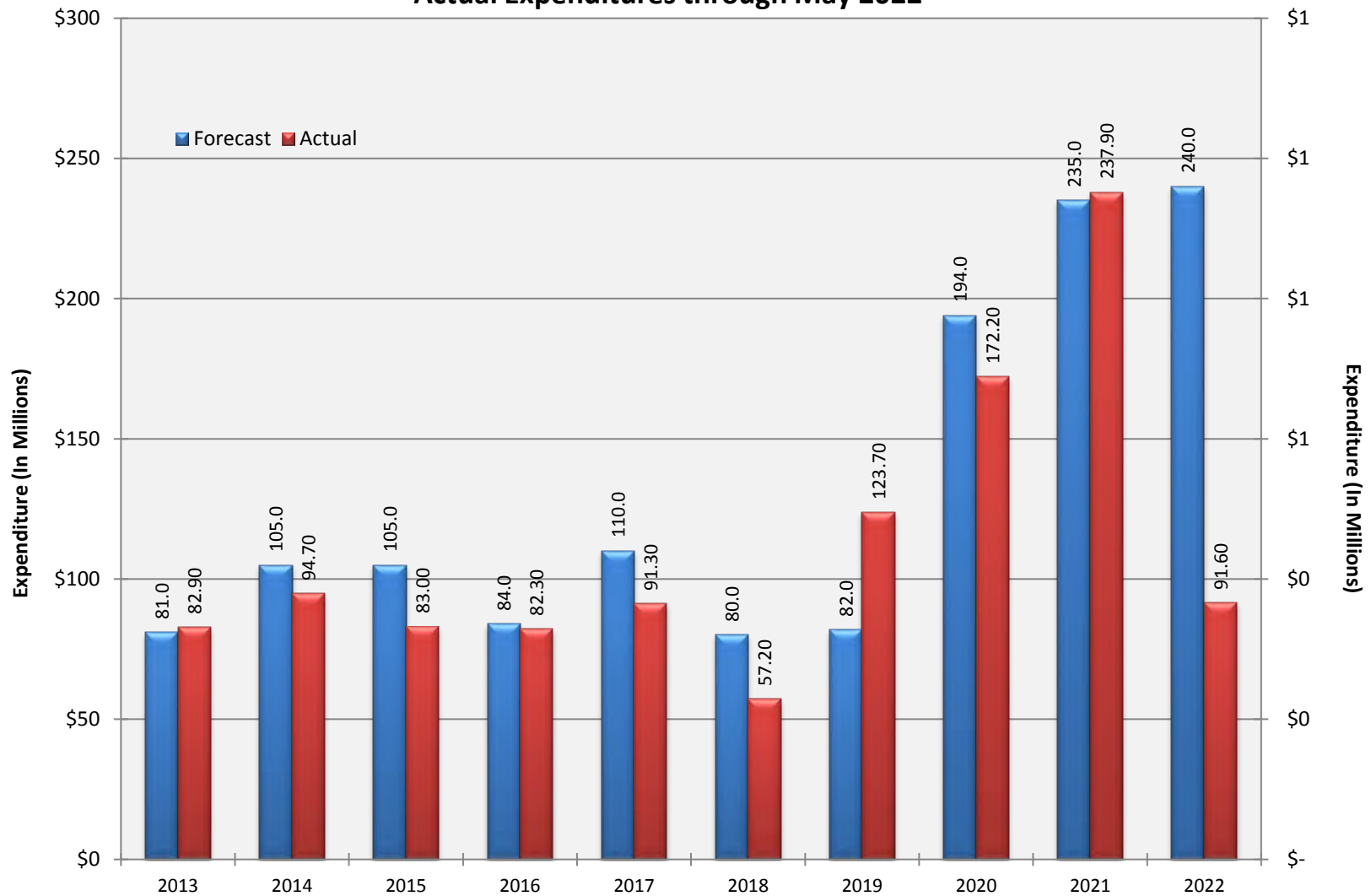
**Charlotte-Mecklenburg Board of Education**  
**Approved Construction or Repair Change Orders\***  
**Reporting Period: May 2022**

<b>Funding Source</b>	<b>Project Name</b>	<b>Contractor</b>	<b>Description</b>	<b>Change Order Amount</b>	<b>Revised Contract Value</b>
2017 Bond	West Charlotte High School (17)	Rodgers-Holt Brothers, a Joint Venture	Bipolar Ionization at AHUs; Rigid Insulation at Dining Roof; Flags in Omni; Bi-Directional Amplifier; Gate Relocation and Add; Concrete at Storage Containers & Concessions; Paint Top of Wall in Media Center	\$3,194.00	\$88,612,139.00
2017 Bond	East Mecklenburg High School (17)	Turner Construction Company	Protective Coverings; Final Survey Scope of Work; Remove TV Brackets at Teaching Walls; Battery Operated Flush Valves ILO Hard Wired; Drywall & Tile Changes; Electrical & Doors Frames Hardware Changes; Extended General Conditions (Duke)	\$35,516.57	\$11,489,200.25

\* Not previously presented to the Board of Education for Approval (less than \$90,000)

# 10 YEAR EXPENDITURE SUMMARY

Forecast Expenditure versus  
Actual Expenditures through May 2022



# GLOSSARY



# Glossary

---

- **Project Management** – This section includes updates from our project managers and describes the currently active construction projects. This includes from Board of Education award thru final completion.
- **Design and Bidding** – This section contains updates from our design managers on the projects currently in the design phase. This phase from design award to Board of Education award of construction.
- **Controls** – Section includes misc. updates from controls group including expenditures, related Board of Education awards during the reporting period, cash flow information. This section covers all projects from approved bond through final expenditures and bond close with the county.
- **MWSBE** – Contains updates from the MWSBE Director and team, including current activity and summaries of the participation by MWSBE providers on our program.
- **Bond Progress Summary** – Provides a summary of bond financials including bond value, committed/pending amounts, paid to date, expended this month.
- **Project Procurement Dates** - Next 90 Days major project bid activity.
- **Mobile Swing Space Utilization** – Includes a summary of program related swing space currently in use and the schedule of use.
- **Bond Summary Schedule** – Current program summary schedule including planned design, construction and FF&E. These activities are fed from detailed schedules and are fine-tuned as project information is available.
- **Project Contractor Teams**; Provides summary of turnover dates for completed/closed projects since 2010 including architects/designers and contractors.
- **School Site Location Maps** – General location of bond projects (2017) by type.
- **Project Status Report** – This section of the report provides a summary of the bond project scope, current estimate (all sources), planned occupancy/actual occupancy date. It also provides a current status of the design phase, construction progress and a brief update. The report currently includes 2013 and 2017 bond projects that have or will be completed after to August 2016.
- **MWSBE Participation Report** – The MWSBE report provides a summary of the participation on the 2013 & 2017 Bond funded projects.
- **Project Progress Photos** – Includes photos of active construction projects.
- **Budget Summary Reports** – These reports are by funding source and summarize financial activity to date on the projects. This includes original and current project estimates, committed values, amounts paid to date, balances and monthly expenditures.
- **Change Orders < \$90,000** – This month's approved construction or repair change orders < \$90,000.
- **Expenditure Summary** – Provides a summary of Bond Expenditures by calendar year.