

Capital Improvement Program

Monthly Bond Report April 2022



New Elementary School Elon, Hawk Ridge, Polo Ridge Relief



CAPITAL PROGRAM SERVICES Capital Improvement Program

APRIL 2022
MONTHLY BOND REPORT

PROGRAM OVERVIEW

- Project Management
- Design and Bidding
- Controls
- MWSBE
- Bond Progress Summary
- Project Procurement - Next 90 Days
- Swing Space Utilization
- Bond Summary Schedule
- Project Contractor Teams; Projects in Design/Construction and Substantially Completed/Closed
- School Site Location Maps
 - Elementary Schools
 - Middle Schools
 - High Schools & Specialty Schools

PROJECT STATUS REPORT

MWSBE PARTICIPATION REPORT

PROJECT PROGRESS PHOTOS

PROJECT CONTROLS

- Budget Summary Reports
 - 2013 Bond Series
 - 2017 Bond Series
- Change Orders < \$90,000
- Expenditure Summary

GLOSSARY

PROGRAM OVERVIEW

PROJECT MANAGEMENT

The following is a summary of the activity on the bond funded projects in construction during the month of April.

The construction manager for **East Mecklenburg High School** is working towards substantial completion. The above ceiling inspections have been completed and ceiling tile is being installed. The floor finishes are also being finalized with VCT wax to follow. The exterior hardscapes are being tied into existing walks and pavement for completion. The team anticipates starting FF&E installation in early May. The new classroom wing is scheduled for occupancy in August 2022.

The contractor for **E.E. Waddell** is working thru procurement and submittals in preparation for the project to commence this summer. The project is scheduled for completion spring of 2023.

The **Garinger Addition and Renovation** construction manager continued with interior and exterior activities. Exterior metal panels continued with plans to complete the first week of May. Exterior site work progressed with sidewalks, curb and gutter, detention pond conversion along with prepping for landscaping. Ceiling tile was installed throughout the addition along with installation of ceiling devices; security, cameras, speakers, etc. VCT flooring continued in available areas. In addition the renovation work in the 300 building is being coordinated and will commence this summer. The 16-classroom addition is scheduled for occupancy August 2022 and the 300 building renovations are scheduled for completion in January 2023.

The **Lansdowne Elementary School** construction manager has been able to obtain permanent power and is working to get conditioned air moving. The VCT floor and classroom casework is scheduled for installation in early May. Above ceiling inspections are taking place now that light fixtures have arrived and been installed. The landscaper has mobilized on site and is beginning required plantings. Occupancy of the replacement school is scheduled for August 2022. Upon completion of the new building demolition and remaining site work will commence and be completed in 2023.

The **Mint Hill Elementary School** (*fka Bain, Lebanon, Piney Grove Relief*) construction manager continues on interior finishes. Ceiling grid has been completed in the classroom wing and above ceiling inspections will follow. The VCT has been installed in the classroom wing as well as classroom casework. The site is taking shape as final grades are established and sod installed. Sidewalks have been tied into the existing bus lot and the new entrance road has been tied into the existing entrance. Supply chain issues that impacted the delivery of electrical panels is being mitigated with substitutions and revisions to the construction sequencing. This new 45-classroom school will be located next to the existing Mint Hill Middle School. The project is scheduled for occupancy in August 2022. The road work will continue into the summer and the based on current product lead times the signal installation into the spring of 2023.

The **New Elementary School (Elon, Hawk Ridge, Polo Relief)** construction manager continued with installation of the erosion control measures, construction fencing and detention pond. The new 45-classroom relief elementary school will be located across from the Ardrey Kell High School and is scheduled for occupancy August 2023.

The **New Elementary School (Hidden Valley, JW Grier, Newell Relief)** construction manager has installed the perimeter fence and established the work zone. The initial measures for the storm water erosion control plan are installed and site clearing will begin shortly. This new 45-classroom school will be located next to Northridge Middle School and is scheduled for occupancy August 2023.

The **New High School (South, Ardrey Relief)** construction manager continued with installations of the erosion control measures and detention pond. The new 100-classroom relief high school is scheduled to be occupied in August 2024.

The construction manager for the **Palisades High School** (*fka New High School Olympic Relief*) continued with finishes in the athletics, cafeteria and auditorium areas. Mechanical, electrical and plumbing trim-out continued throughout the building with cover plates and devices. The landscaper continued to install sod and plants throughout the campus. The architect continued their review of the classroom buildings for compliance with the documents to generate the punch list. The 100-classroom relief high school is scheduled to be occupied in August 2022.

The **Shamrock Gardens Elementary School** construction manager continued to push the project to completion. Final clean continued in the administration, media center, music and arts spaces in allowing the architect to begin review of the spaces for punch list. Striping of the bus and staff parking lots was completed and the conversion of the temporary detention basin to permanent started. The new 45-classroom replacement elementary school is scheduled to be occupied August 2022.

The trade contractors continue to work throughout the **West Charlotte High School** facility. Finishes throughout the facility are progressing well. The final clean operation has started at most areas in preparation for owner/architect punch list. Finishes are still being completed at the auditorium and pool area. The gym acoustical treatments and athletic accent striping are also installed. Kitchen equipment for culinary arts and child nutrition is being delivered and installed. The site contractor continues hardscapes around the building and sod install is starting soon. The team is now working with administration to finalize transition plans from Phase 1 to Phase 2. The stadium improvements including the field house and concession stands are nearing completion. The new bus lot will have the finish coat of asphalt installed in early May. The project is scheduled to be occupied August 2022. Once the new school is occupied the existing school will be demolished and final site work will take place with final project completion in August 2023.

DESIGN AND BIDDING

The following is a summary of the activity on the bond funded projects in design and bidding phase during the month of April.

The **Bruns Avenue Elementary Replacement** project architect has completed the schematic design phase and progressed into the design development phase. CMS due diligence activities continue to progress. This new 45-classroom school facility is being designed with a full size gym and associated areas in coordination with Charlotte-Mecklenburg Park & Recreation. The school is scheduled for occupancy August 2024.

The **JT Williams Secondary Montessori** project continues to progress with LUESA and City Engineering permit approvals. A utility easement is required at the Tipton Road driveway to accommodate a new fire water line for the project. The construction manager has prepared their bidding documents and received bids. The project's base scope focuses on required civil improvements, architectural and MEP renovations in the 100 and 200 buildings. A 10-classroom modular will be used for swing and future space at the school site. The project construction is scheduled to start in June 2022 and be completed August 2024.

The **Mountain Island Lake Academy** project continues to progress with LUESA and City Engineering permit approvals. The construction manager has bid the remaining scopes of work and is preparing the phase II construction GMP for approval by the CMBOE in late May. The project consists of a building addition containing a middle school gymnasium and visual and performing arts classrooms, revisions to the car parking, and playfield. Construction is scheduled to start in the summer 2022 and occupied in August 2023.

The **New Elementary School (Windsor, Winterfield, Idlewild Relief)** project continues to progress with LUESA and City Engineering permit approvals. The construction manager has received his bids for the remaining bid packages and the CMS BOE has approved the GMP for this project. The required CDOT improvements continue to progress in their early development with CDOT. CDOT has agreed the minor road improvements needed will not impact the release of the building permit. This new 45-classroom school facility is scheduled for occupancy August 2023.

The **South Mecklenburg High School Addition** and **Northwest School of the Arts Addition** projects continue to progress with the development of designer agreements.

CONTROLS

Expenditures for the month of April were \$13M. This brings our fiscal year to date total to \$187.9M against the 2022 fiscal year cash flow projection of \$260M.

The Controls team continues the process of reconciling and closeout of completed 2013 and 2017 bond projects continues. Available funding is being accumulated to address potential supply chain and increased construction costs.

Board of Education approval was received on April 26 for contract for modular classroom footings installation for John T. Williams and phase two construction for the New Elementary School (Windsor, Winterfield, Idlewild Relief) projects.

The Controls team continues to submit notices of potential changes at school sites so senior staff can adequately evaluate issues. Additionally, the Controls team continues the processing of contracts, invoices, preparing notices of potential change, change orders, pay applications, and check requests for projects under construction. Captured construction cost data is used to prepare financial reports such as detailed cost reports, budget summaries, reconciliation to CMS books, revisions to and updated cash flows and complete special financial requests by CMS and Mecklenburg County. This process, along with data compilation and management, allows senior staff to provide the proper guidance/direction and accurate information to the program stakeholders.

MWSBE

As of April 2022 the overall MWSBE utilization percentage related to design and construction of the 2017 bond projects is 42.72% which includes 19.01% participation by minority contractors, 22.43% by women contractors and 1.28% participation by small business contractors. This accounts for more than \$328 million of utilization by Minority, Women and Small Business Contractors.

The Diversity & Inclusion Office of Charlotte-Mecklenburg Schools continued to conduct several individual virtual orientations with new MWSBE contractors and prime contractors. In addition, team members also attended/hosted the following outreach sessions/pre-bid meetings and/or workforce development opportunities:

Outreach Sessions:

- Supplier Diversity & Inclusion Roundtable
- United Minority Contractors of North Carolina/NC Bar Association joint meeting
- Waddell High School pre-construction meeting hosted by Moseley Architects
- American Contract Compliance Association National Training Institute Planning meetings

Good Faith Efforts:

- Review of Mt. Island Lake and J.T. Williams MWSBE participation documentation

Workforce Development:

CMS and its Workforce Development partners conducted its quarterly meeting in April. Our partners reported 11 permanent new hires for our CMS projects, job shadowing opportunities and upcoming trade networking events. Turner Construction will host a career fair at East Mecklenburg High school on May 18 at 9a – 12p for 300 graduating seniors. Efforts to increase the workforce using our resource partners will continue as current capital projects progress.

Team New Hire:

Rachelle Reid has been hired as the new Supplier Diversity Compliance Specialist. She will assist in the development and evaluation of bids; requests for proposal and other documents; participates in pre-bid, pre-proposal, bid openings and pre-construction meetings; track, record and monitor MWSBE contract documents and outreach. Ms. Reid has a wealth of knowledge and experience in various types of construction delivery and risk management. Please join us in welcoming Ms. Reid to Capital Program Services.

Over the next month, team members will continue to work with contractors interested in bidding on the upcoming school projects utilizing various virtual tools to communicate. Contractors are encouraged to review bid advertisements in Charlotte Observer and register as a vendor on the North Carolina Interactive Purchasing System for notification of the various opportunities.

BOND PROGRESS SUMMARY As of April 2022

Funding Source and Value		Amount Committed/Pending	Amount Paid to Date	Amount Expended This Period
2013 Bond	\$316,067,527	\$314,835,158	\$309,590,777	\$779,753
2017 Bond	\$1,019,279,985	\$854,995,251	\$531,272,719	\$12,256,650
Grand Total	\$1,335,347,512	\$1,169,830,409	\$840,863,496	\$13,036,403

UPCOMING MAJOR CONSTRUCTION PROCUREMENT DATES *Three Month Look Ahead*

School Name

Lincoln Heights

Bid Dates*

June 2022

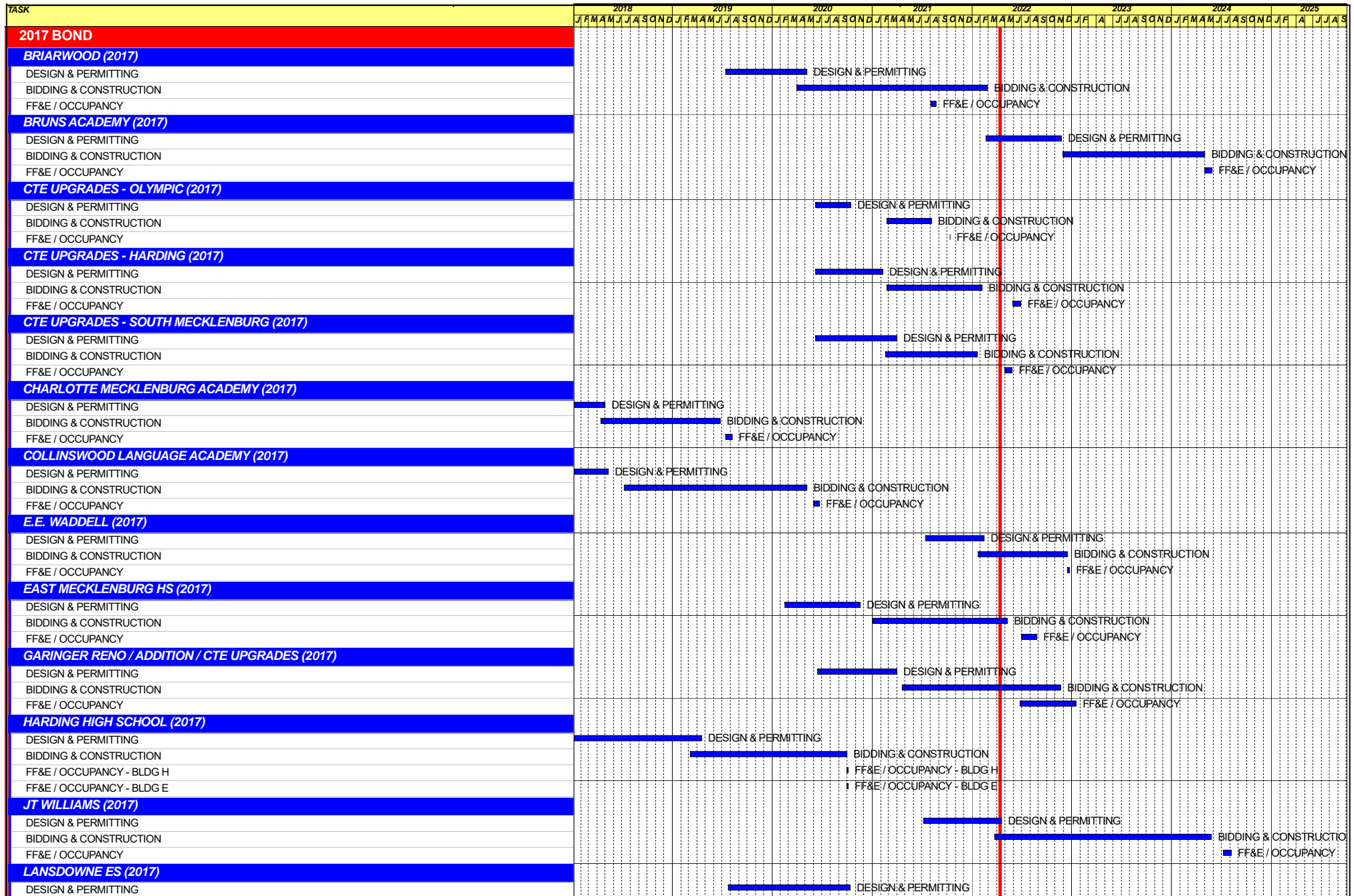
** NOTE: Work In Progress...Dates Subject to Change.*

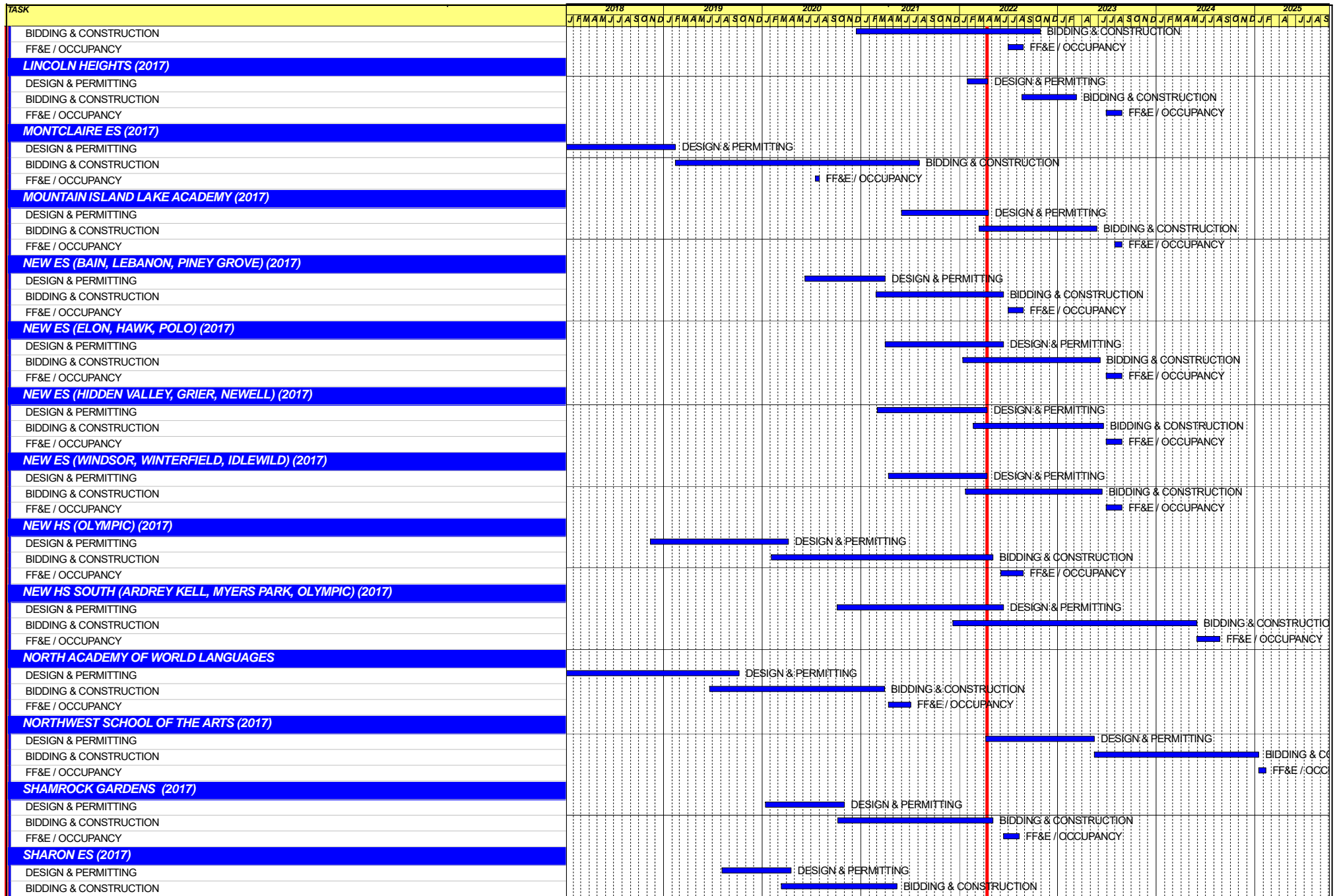
SWING SPACE UTILIZATION

Creating a temporary space for students and staff to occupy during construction on a school’s campus has proven to be beneficial to the project’s schedule and cost and overall safety and efficiency of school operations. When the renovation or expansion of a facility is performed and the facility must remain functionally operational, there are benefits to the owner in using swing space.

We have successfully utilized both onsite and offsite swings. The most desirable swings are “offsite” ones. Onsite swing using mobiles or modulars, likewise has been successfully used. The following is a summary of current swing options planned or in use.

<u>School</u>	<u>No. of Mobiles/Relocation Site</u>	<u>Status (From – To)</u>
Shamrock	Lincoln Heights	August 2020 – August 2022





Capital Improvements Program
Projects in Design or Under Construction

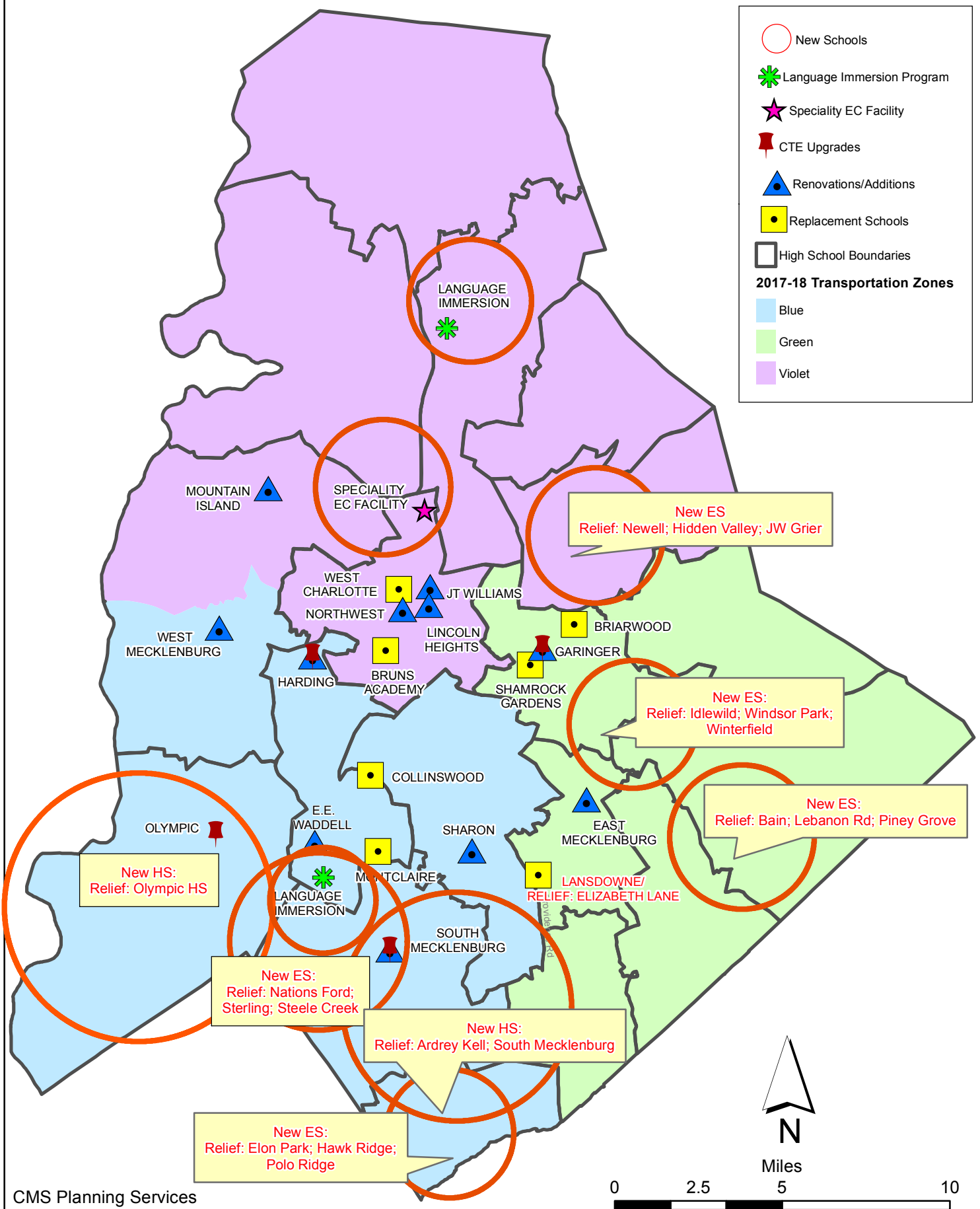
School	Architect	General Contractor/CM
Projects In Design		
J.T. Williams (17)	FWA	New Atlantic
Lincoln Heights Repurpose (17)	Neighboring Concepts	TBD
Mountain Island School (17)	ADW	Whiting-Turner
New Bruns Avenue ES	ADW	Edifice, Inc.
New ES (Windsor, Winterfield, Idlewild) (17)	Neighboring Concepts	Rodgers-Holt Brothers
Projects in Bid/Award/Construction Phase		
East Mecklenburg High School (17)	Morris Berg	Turner Construction
E.E. Waddell (17)	Moseley	Randolph & Sons
Garinger Addition/Renovation & CTE (17)	LS3P	Balfour Beatty
Lansdowne Elementary School Replacement (17)	Perkins Eastman	Edifice, Inc.
New ES (Bain, Lebanon Rd, Piney Grove) (17)	FWA	Metcon
New ES (Elon,Hawk Ridge, Polo Ridge) (17)	Little Diversified	Balfour Beatty
New ES (Hidden Valley, JW Grier, Newell) (17)	ADW	Edifice, Inc.
New HS (South, Ardrey) (17)	Ratio	Messer
Palisades High School (Olympic Relief) (17)	Little Diversified	Edifice, Inc.
Shamrock Gardens Elementary School Replacement (17)	Little Diversified	Rodgers-Holt Brothers
West Charlotte High School (17)	LS3P	Rodgers-Holt Brothers

Capital Improvements Program
Projects Substantially Completed/Closed *

School	Turnover Year	Architect	General Contractor
CTE (Harding, Olympic, South) (17)	Jan-22	MPS	Branch Brownstone
Briarwood Elementary School Replacement (17)	Aug-21	ADW	New Atlantic Contracting
Montclair Elementary School (17)	Aug-21	WHN	Messer Construction
North Academy of World Languages (17)	Aug-21	ADW	New Atlantic Contracting
Sharon Elementary School (17)	Aug-21	Clark Nexsen	Samet
South Academy of International Languages (17)	Aug-21	FWA	Messer Construction
South Pine Academy (17)	Aug-21	FWA	Metcon
West Mecklenburg Gym (17)	Aug-21	Moseley	Barnhill/D.A. Everett
Collinswood Language Academy (17)	Aug-20	Perkins Eastman	Turner Construction
Harding High School Renovation (17)	Aug-20	SFLA	Barnhill Contracting
Rea Farms STEAM Academy (13)	Aug-20	Little Diversified	Balfour Beatty
Ashley Park K-8 Conversion (13)	Aug-19	ADW	Turner Construction
Druid Hills K-8 Conversion (13)	Aug-19	ADW	Edifice, Inc.
Selwyn Elementary (13)	Aug-19	Clark Nexsen	Balfour Beatty
Charlotte Mecklenburg Academy (17)	Aug-19	KSQ	Edifice, Inc.
Davidson K-8 (13)	Aug-19	Little Diversified	Gilbane
CTE - North Mecklenburg High (13)	Aug-19	LS3P	Shiel Sexton
CTE - Garinger (13)	Mar-19	LS3P	Hostetter & Son
CTE - Independence (13)	Mar-19	LS3P	D.E. Brown
CTE - West Mecklenburg (13)	Mar-19	LS3P	Hostetter & Son
Charlotte East Language Academy (13)	Aug-18	Morris Berg	Edifice, Inc
Myers Park High School Phase 3 (13)	Aug-18	Boomerang Design	BE&K
Northridge Middle (13)	Aug-18	Morris Berg	Barnhill Contracting
Myers Park High Bldg 2 (13)	Feb-18	Boomerang Design	BE&K
East Mecklenburg High Addition (13)	Jan-18	Bergman (fna Gantt Huberman)	Edifice, Inc.
J.M. Alexander Middle (13)	Aug-17	FWA Group	Balfour Beatty
Northwest School of the Arts Renovation (13)	Aug-17	Moseley	Turner Construction
Renaissance West STEAM Academy (13)	Aug-17	Little Diversified	Rodgers Construction
South Mecklenburg High Addition (13)	Jul-17	SFLA	Barnhill Contracting
Myers Park High Bldg 1 (13)	Sep-16	Boomerang	KBR
Statesville Road Elementary (13)	Aug-16	ADW	JE Dunn
Nations Ford Elementary (13)	Aug-16	Wash Hatem Nelson	Messer Construction
Olympic High Addition (13)	Aug-16	McMillan, Pazdan, Smith	Turner Construction
Lawrence Orr Elementary (07)	Aug-15	Cort Architectural Group	DH Griffin/Metcon
Parkside Elementary (07)	Aug-15	Wash Hatem Nelson	Clancy & Theys
Hawthorne High Renovations (07)	Aug-15	Morris-Berg	Balfour Beatty
Newell Elementary (07)	Aug-15	Perkins Eastman	New Atlantic Contracting
Ranson Middle (07)	Aug-15	Morris-Berg	Edifice, Inc.
Vance High	Jan-15	LS3P	Matthews Construction Co., Inc.
Garinger High - Renovations/Addition	Aug-14	Adams Group Architects	Turner Construction
Olympic High - Stadium	Aug-14	Site Solutions	Turner Construction
West Mecklenburg High - Stadium	Aug-14	Site Solutions	Turner Construction
Collinswood - Indoor Air Quality	Aug-14	PEA	The Bowers Group
Lansdowne - Indoor Air Quality	Aug-14	AeroRaq	Tyler 2
McKee Road - Indoor Air Quality	Aug-14	McCracken & Lopez	Godfrey Construction
Garinger High - Track & Field	Jul-14	Site Solutions	Turner Construction
Independence High - Gym	Jun-14	Shook Kelly	Shelco, Inc. (CM)
Palisades Park Elementary	May-14	Wash Hatem Nelson	Clancy & Theys
East Mecklenburg High Auditorium	Jan-14	Gantt Huberman Associates	Godfrey Construction Co., Inc.

Projects closed prior to 2014 are not shown

CMS Capital Improvement Plan 2017 Bond Projects



PROJECT STATUS REPORT



Monthly Project Status 2017 Bond Summary April 2022

Project	Current Project Estimate	Project Scope	** Occupy On	Design Phase	Construction Progress	Project Status
Briarwood Elementary School (17)	\$ 31,762,730	45-classroom replacement facility; replaces school built in 1956.	August 2021	Complete	99 %	The construction manager is finalizing closeout and the return of the Park and Recreation land used during construction.
Bruns Academy (17)	\$ 39,784,927	New 45-classroom elementary school (K-5); replaces old school built in 1969.	August 2024	Design Development	0 %	The Bruns Avenue Elementary Replacement project architect has completed the schematic design phase and progressed into the design development phase. CMS due diligence activities continue to progress. This new 45-classroom school facility is being designed with a full size gym and associated areas in coordination with Charlotte-Mecklenburg Park & Recreation.
Career and Technology Education (17)	\$ 10,159,765	Phase I CTE upgrades at Olympic, Harding, Garinger and South Mecklenburg.	January 2022	Complete	98 %	The CTE projects at Harding and South Mecklenburg have completed the construction renovations. The contractor is still working on punch list items and a few material issues that required substitute equipment. The South Mecklenburg culinary kitchen is now open to students and staff. The project at South Mecklenburg renovated the old kitchen area into a culinary arts lab and classroom. The Harding project still has the temporary construction partition walls in place. The CTE department is working through delays with the FF&E that is planned for use in the new Harding suite. The Harding project renovated the existing classrooms in the auditorium building to develop a suite of technology classrooms.
Charlotte-Mecklenburg Academy (17)	\$ 17,699,220	New EC school located on the old Statesville Elementary School site.	August 2019	Complete	100 %	Project is complete.
Collinswood Language Academy (17)	\$ 41,422,560	New 63-classroom K-8 facility on the site of the Smith Family Center.	August 2020	Complete	100 %	Project is complete.

Monthly Project Status

2017 Bond Summary

April 2022

Project	Current Project Estimate	Project Scope	** Occupy On	Design Phase	Construction Progress	Project Status
E.E. Waddell (17)	\$ 5,137,367	Repurpose current E.E. Waddell to reopen as a magnet high school.	August 2023	Complete	0 %	The contractor for E.E. Waddell is working thru procurement and submittals in preparation for the project to commence this summer.
East Mecklenburg High School (17)	\$ 10,405,411	This project will provide for the design, and construction of a new 30 classroom building.	August 2022	Complete	90 %	The construction manager for East Mecklenburg High School is working towards substantial completion. The above ceiling inspections have been completed and ceiling tile is being installed. The floor finishes are also being finalized with VCT wax to follow. The exterior hardscapes are being tied into existing walks and pavement for completion. The team anticipates starting FF&E installation in early May.
Garinger High School (17)	\$ 5,986,979	Project includes the design and construction for renovations of 300 building and a new 16 classroom building.	January 2023	Complete	54 %	The Garinger Addition and Renovation construction manager continued with interior and exterior activities. Exterior metal panels continued with plans to complete the first week of May. Exterior site work progressed with sidewalks, curb and gutter, detention pond conversion along with prepping for landscaping. Ceiling tile was installed throughout the addition along with installation of ceiling devices; security, cameras, speakers, etc. VCT flooring continued in available areas. In addition the renovation work in the 300 building is being coordinated and will commence this summer.
Harding High School (17)	\$ 13,747,878	Renovation of the kitchen, cafeteria, existing gym (aux) and the addition of a new gym.	August 2020	Complete	100 %	Project is complete.
JT Williams (17)	\$ 17,432,600	Project includes building renovations to J.T. Williams Montessori magnet.	August 2024	Complete	0 %	The JT Williams Secondary Montessori project continues to progress with LUESA and City Engineering permit approvals. A utility easement is required at the Tipton Road driveway to accommodate a new fire water line for the project. The construction manager has prepared their bidding documents and received bids. The project's base scope focuses on required civil improvements, architectural and MEP renovations in the 100 and 200 buildings. A 10-classroom modular will be used for swing and future space at the school site.

Monthly Project Status

2017 Bond Summary

April 2022

Project	Current Project Estimate	Project Scope	** Occupy On	Design Phase	Construction Progress	Project Status
Lansdowne Elementary School (17)	\$ 34,078,834	New 45-classroom school; replaces old school built in 1959 and relieve crowding at Elizabeth Lane ES.	August 2022	Complete	79 %	The Lansdowne Elementary School construction manager has been able to obtain permanent power and is working to get conditioned air moving. The VCT floor and classroom casework is scheduled for installation in early May. Above ceiling inspections are taking place now that light fixtures have arrived and been installed. The landscaper has mobilized on site and is beginning required plantings. Occupancy of the replacement school is scheduled for August 2022. Upon completion of the new building demolition and remaining site work will commence.
Lincoln Heights Elementary School (17)	\$ 4,588,675	Repurpose and reopen as magnet school.	August 2023	Construction Documents	0 %	Shamrock Gardens will be utilizing the Lincoln Heights Elementary building as swing space August 2020 - August 2022. Playgrounds were replaced and new digital signage was installed summer 2020. Based on Board approval in May 2021 the occupancy date has been moved to 2023.
Mint Hill Elementary School (17)	\$ 30,455,951	New 45-classroom elementary school; relieves crowding at Bain, Lebanon Road, Piney Grove.	August 2022	Complete	79 %	The Mint Hill Elementary School (fka Bain, Lebanon, Piney Grove Relief) construction manager continues on interior finishes. Ceiling grid has been completed in the classroom wing and above ceiling inspections will follow. The VCT has been installed in the classroom wing as well as classroom casework. The site is taking shape as final grades are established and sod installed. Sidewalks have been tied into the existing bus lot and the new entrance road has been tied into the existing entrance. Supply chain issues that impacted the delivery of electrical panels is being mitigated with substitutions and revisions to the construction sequencing. This new 45-classroom school will be located next to the existing Mint Hill Middle School.
Montclair Elementary School (17)	\$ 28,209,390	New 45-classroom replacement facility replacing school built in 1958.	August 2020	Complete	100 %	The construction manager completed the final phase of work on the project. The new 45-classroom elementary school building was occupied in August.

Monthly Project Status

2017 Bond Summary

April 2022

Project	Current Project Estimate	Project Scope	** Occupy On	Design Phase	Construction Progress	Project Status
Mountain Island Lake Academy (17)	\$ 13,239,686	K-8 Phase 2 - New gymnasium and specialty classrooms.	August 2023	Complete	0 %	The Mountain Island Lake Academy project continues to progress with LUESA and City Engineering permit approvals. The construction manager has bid the remaining scopes of work and is preparing the phase II construction GMP for approval by the CMBOE in late May. The project consists of a building addition containing a middle school gymnasium and visual and performing arts classrooms, revisions to the car parking, and playfield.
New Elementary School (Elon, Hawk Ridge, Polo Relief) (17)	\$ 51,856,961	New 45-classroom elementary school to relieve Elon, Hawk Ridge, Polo.	August 2023	Complete	2 %	The New Elementary School (Elon, Hawk Ridge, Polo Relief) construction manager continued with installation of the erosion control measures, construction fencing and detention pond.
New Elementary School (Hidden Valley, JW Grier, Newell) (17)	\$ 43,579,387	New 45-classroom elementary school; relieves overcrowding at Hidden Valley, J.W. Grier, Newell.	August 2023	Complete	2 %	The New Elementary School (Hidden Valley, JW Grier, Newell Relief) construction manager has installed the perimeter fence and established the work zone. The initial measures for the storm water erosion control plan are installed and site clearing will begin shortly.
New Elementary School (Windsor, Winterfield, Idlewild Relief) (17)	\$ 45,297,022	New 45-classroom elementary school to relieve Windsor, Winterfield, and Idlewild ES.	August 2023	Complete	0 %	The New Elementary School (Windsor, Winterfield, Idlewild Relief) project continues to progress with LUESA and City Engineering permit approvals. The construction manager has received his bids for the remaining bid packages and the CMS BOE has approved the GMP for this project. The required CDOT improvements continue to progress in their early development with CDOT. CDOT has agreed the minor road improvements needed will not impact the release of the building permit.
New High School (South, Ardrey) (17)	\$ 158,786,358	New 100 classroom high school to relieve South Mecklenburg, Ardrey Kell and Myers Park HS.	August 2024	Complete	2 %	The New High School (South, Ardrey Relief) construction manager continued with installations of the erosion control measures and detention pond.
North Academy of World Languages (17)	\$ 42,198,909	New 66 classroom K-8 Language Immersion facility located on the old J.M. Alexander Middle School site.	August 2021	Complete	100 %	Project is complete.
Northwest School of the Arts (17)	\$ 20,467,000	Replace classroom building built in 1952 and build classroom addition that supports program.	August 2024	Not Started	0 %	Development of Designer agreement in progress.

Monthly Project Status

2017 Bond Summary

April 2022

Project	Current Project Estimate	Project Scope	** Occupy On	Design Phase	Construction Progress	Project Status
Palisades High School (17)	\$ 108,908,793	New 100 classroom high school; relieves crowding at Olympic High School.	August 2022	Complete	97 %	The construction manager for the Palisades High School (fka New High School Olympic Relief) continued with finishes in the athletics, cafeteria and auditorium areas. Mechanical, electrical and plumbing trim-out continued throughout the building with cover plates and devices. The landscaper continued to install sod and plants throughout the campus. The architect continued their review of the classroom buildings for compliance with the documents to generate the punch list.
Shamrock Gardens Elementary School (17)	\$ 31,358,351	New 45-classroom replacement facility.	August 2022	Complete	98 %	The Shamrock Gardens Elementary School construction manager continued to push the project to completion. Final clean continued in the administration, media center, music and arts spaces in allowing the architect to begin review of the spaces for punch list. Striping of the bus and staff parking lots was completed and the conversion of the temporary detention basin to permanent started.
Sharon Elementary School (17)	\$ 9,125,862	Add 16 classroom building and increase capacity of cafeteria.	August 2021	Complete	100 %	Project is complete.
South Academy of International Languages (fka New K-8 School (South) (17)	\$ 41,209,367	New 71 classroom K-8 Language Immersion facility located on the old Nations Ford Elementary School site.	August 2021	Complete	100 %	Project is complete.
South Mecklenburg High School (17)	\$ 15,622,927	Renovate/replace two classroom buildings built in 1958 to upgrade learning conditions.	January 2025	Not Started	0 %	Development of Designer agreement in progress.
South Pine Academy (17)	\$ 30,822,550	New 45-classroom elementary school to relieve Nations Ford, Sterling, and Steele Creek.	August 2021	Complete	100 %	Project is complete.

Monthly Project Status

2017 Bond Summary

April 2022

Project	Current Project Estimate	Project Scope	** Occupy On	Design Phase	Construction Progress	Project Status
West Charlotte High School (17)	\$ 105,977,166	New 100 classroom school to replace current facility built in 1954.	August 2022	Complete	82 %	The trade contractors continue to work throughout the West Charlotte High School facility. Finishes throughout the facility are progressing well. The final clean operation has started at most areas in preparation for owner/architect punch list. Finishes are still being completed at the auditorium and pool area. The gym acoustical treatments and athletic accent striping are also installed. Kitchen equipment for culinary arts and child nutrition is being delivered and installed. The site contractor continues hardscapes around the building and sod install is starting soon. The team is now working with administration to finalize transition plans from Phase 1 to Phase 2. The stadium improvements including the field house and concession stands are nearing completion. The new bus lot will have the finish coat of asphalt installed in early May.
West Mecklenburg High School (17)	\$ 6,457,359	Provide new gymnasium, the existing gymnasium will become the auxilliary.	August 2021	Complete	100 %	Project is complete.

MONTHLY PROJECT PHOTOS

PROJECT PROGRESS PHOTOS



Palisades High School

PROJECT PROGRESS PHOTOS



Palisades High School

PROJECT PROGRESS PHOTOS



Palisades High School

PROJECT PROGRESS PHOTOS



Palisades High School

PROJECT PROGRESS PHOTOS



West Charlotte High School Replacement

PROJECT PROGRESS PHOTOS



West Charlotte High School Replacement



West Charlotte High School Replacement

PROJECT PROGRESS PHOTOS



West Charlotte High School Replacement

PROJECT PROGRESS PHOTOS



West Charlotte High School Replacement

PROJECT PROGRESS PHOTOS



Shamrock Gardens Elementary School

PROJECT PROGRESS PHOTOS



Shamrock Gardens Elementary School

PROJECT PROGRESS PHOTOS



Shamrock Gardens Elementary School

PROJECT PROGRESS PHOTOS



Shamrock Gardens Elementary School

PROJECT PROGRESS PHOTOS



Lansdowne Elementary School

PROJECT PROGRESS PHOTOS



Lansdowne Elementary School

PROJECT PROGRESS PHOTOS



Lansdowne Elementary School

PROJECT PROGRESS PHOTOS



Lansdowne Elementary School

PROJECT PROGRESS PHOTOS



East Mecklenburg High School

PROJECT PROGRESS PHOTOS



East Mecklenburg High School

PROJECT PROGRESS PHOTOS



East Mecklenburg High School

PROJECT PROGRESS PHOTOS



Mint Hill Elementary School

PROJECT PROGRESS PHOTOS



Mint Hill Elementary School

PROJECT PROGRESS PHOTOS



Mint Hill Elementary School

PROJECT PROGRESS PHOTOS



Mint Hill Elementary School

PROJECT PROGRESS PHOTOS



Garinger High School

PROJECT PROGRESS PHOTOS



Garinger High School

PROJECT PROGRESS PHOTOS



Garinger High School

MWSBE PARTICIPATION REPORT

Contract Status Report - MWSBE Participation Commitments

Report Date 5/12/2022

Charlotte-Mecklenburg Schools

5/12/2022 9:16:57 AM

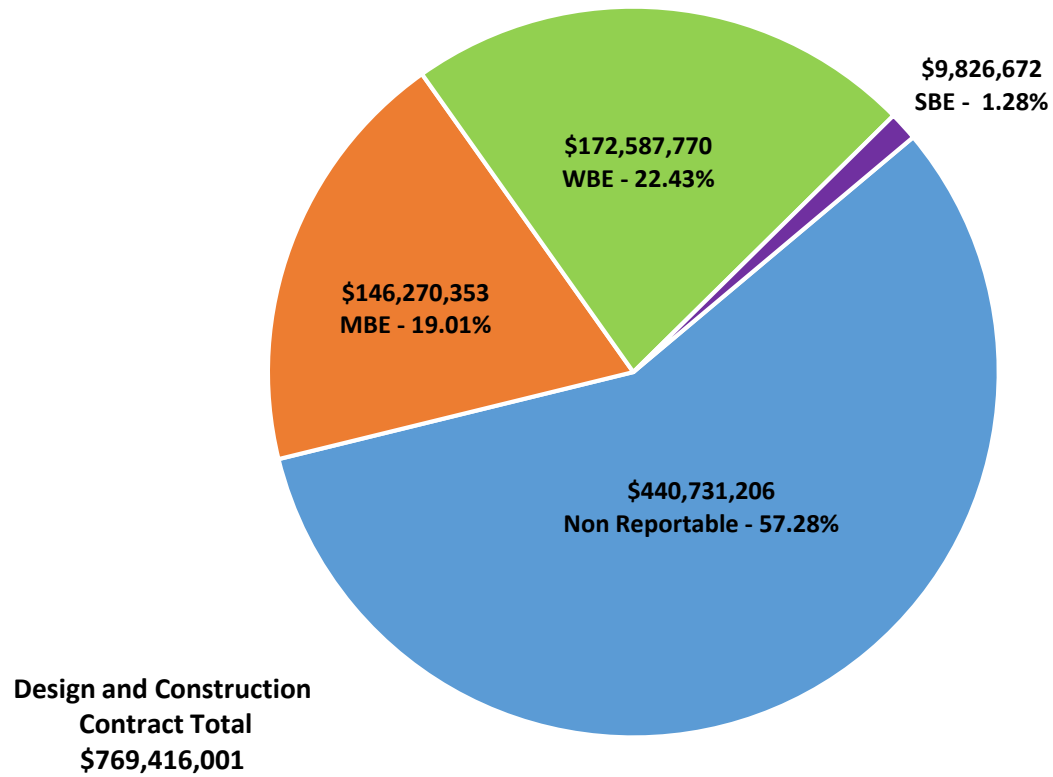
2017 Bond Projects

April 2022 Monthly Bond Report

Facility	Contract Amount	African American MBE\$	%	Other MBE \$	%	Total MBE \$	%	Other WBE \$	%	Other SBE \$	%	Total	%
<u>Briarwood Elementary School (17)</u>	\$28,723,186	\$4,020,515	14.00%	\$1,610,132	5.61%	\$5,630,647	19.60%	\$2,143,102	7.46%	\$182,300	0.63%	\$7,956,049	27.70%
<u>Career and Technology Education (1</u>	\$5,922,484	\$525,859	8.88%	\$292,652	4.94%	\$818,511	13.82%	\$200,372	3.38%	\$63,430	1.07%	\$1,082,313	18.27%
<u>Charlotte-Mecklenburg Academy (17</u>	\$17,035,852	\$198,536	1.17%	\$1,029,192	6.04%	\$1,227,728	7.21%	\$872,755	5.12%	\$13,200	0.08%	\$2,113,683	12.41%
<u>Collinswood Language Academy (17)</u>	\$38,527,740	\$649,287	1.69%	\$1,613,103	4.19%	\$2,262,390	5.87%	\$11,362,566	29.49%	\$9,328	0.02%	\$13,634,284	35.39%
<u>E.E. Waddell (17)</u>	\$1,967,137	\$0	0.00%	\$0	0.00%	\$0	0.00%	\$10,950	0.56%	\$0	0.00%	\$10,950	0.56%
<u>East Mecklenburg High School (17)</u>	\$12,676,283	\$603,811	4.76%	\$532,460	4.20%	\$1,136,271	8.96%	\$490,382	3.87%	\$681,075	5.37%	\$2,307,728	18.21%
<u>Garinger High School (17)</u>	\$4,240,502	\$228,140	5.38%	\$1,032,839	24.36%	\$1,260,979	29.74%	\$604,673	14.26%	\$499,000	11.77%	\$2,364,652	55.76%
<u>Harding High School (17)</u>	\$13,015,986	\$1,504,505	11.56%	\$310,356	2.38%	\$1,814,862	13.94%	\$3,846,831	29.55%	\$176	0.00%	\$5,661,869	43.50%
<u>JT Williams (17)</u>	\$1,541,481	\$2,000	0.13%	\$20,000	1.30%	\$22,000	1.43%	\$0	0.00%	\$51,800	3.36%	\$73,800	4.79%
<u>Lansdowne Elementary School (17)</u>	\$30,675,668	\$2,255,059	7.35%	\$498,305	1.62%	\$2,753,364	8.98%	\$2,339,232	7.63%	\$223,625	0.73%	\$5,316,221	17.33%
<u>Lincoln Heights Elementary School (1</u>	\$454,706	\$92,274	20.29%	\$18,800	4.13%	\$111,074	24.43%	\$0	0.00%	\$74,503	16.38%	\$185,577	40.81%
<u>Mint Hill Elementary School (17)</u>	\$26,312,490	\$4,678,087	17.78%	\$18,825,991	71.55%	\$23,504,078	89.33%	\$1,240,643	4.72%	\$308,680	1.17%	\$25,053,401	95.21%
<u>Montclair Elementary School (17)</u>	\$26,093,784	\$3,617,952	13.87%	\$2,260,381	8.66%	\$5,878,333	22.53%	\$5,729,641	21.96%	\$518,632	1.99%	\$12,126,605	46.47%
<u>Mountain Island Lake Academy (17)</u>	\$2,406,290	\$0	0.00%	\$36,650	1.52%	\$36,650	1.52%	\$29,650	1.23%	\$15,300	0.64%	\$81,600	3.39%
<u>New Elementary School (Elon, Hawk</u>	\$37,283,259	\$5,569,267	14.94%	\$2,413,545	6.47%	\$7,982,812	21.41%	\$7,990,684	21.43%	\$145,500	0.39%	\$16,118,996	43.23%
<u>New Elementary School (Hidden Vall</u>	\$38,642,060	\$5,493,635	14.22%	\$4,211,754	10.90%	\$9,705,389	25.12%	\$2,237,544	5.79%	\$25,600	0.07%	\$11,968,533	30.97%
<u>New Elementary School (Windsor, W</u>	\$9,808,734	\$1,456,670	14.85%	\$258,000	2.63%	\$1,714,670	17.48%	\$358,675	3.66%	\$0	0.00%	\$2,073,345	21.14%
<u>New High School (South, Ardrey) (17</u>	\$132,651,096	\$1,867,976	1.41%	\$3,365,372	2.54%	\$5,233,348	3.95%	\$7,188,271	5.42%	\$3,913,152	2.95%	\$16,334,771	12.31%
<u>North Academy of World Languages</u>	\$38,090,783	\$1,688,775	4.43%	\$1,575,863	4.14%	\$3,264,638	8.57%	\$3,471,693	9.11%	\$437,418	1.15%	\$7,173,748	18.83%
<u>Northwest School of the Arts (17)</u>	\$227,480	\$0	0.00%	\$0	0.00%	\$0	0.00%	\$0	0.00%	\$0	0.00%	\$0	0.00%
<u>Palisades High School</u>	\$98,187,777	\$13,345,487	13.59%	\$5,874,324	5.98%	\$19,219,811	19.57%	\$8,478,293	8.63%	\$766,550	0.78%	\$28,464,654	28.99%
<u>Shamrock Gardens Elementary Scho</u>	\$28,032,340	\$1,901,285	6.78%	\$1,469,007	5.24%	\$3,370,292	12.02%	\$23,207,193	82.79%	\$274,496	0.98%	\$26,851,981	95.79%
<u>Sharon Elementary School (17)</u>	\$8,525,796	\$326,844	3.83%	\$283,497	3.33%	\$610,341	7.16%	\$926,873	10.87%	\$217,984	2.56%	\$1,755,197	20.59%
<u>South Academy of International Lan</u>	\$37,082,033	\$6,023,141	16.24%	\$2,431,071	6.56%	\$8,454,212	22.80%	\$10,755,611	29.00%	\$347,799	0.94%	\$19,557,622	52.74%

Facility	Contract Amount	African American MBE\$	%	Other MBE \$	%	Total MBE \$	%	Other WBE \$	%	Other SBE \$	%	Total	%
<u>South Mecklenburg High School (17)</u>	\$115,472	\$0	0.00%	\$0	0.00%	\$0	0.00%	\$0	0.00%	\$0	0.00%	\$0	0.00%
<u>South Pine Academy (17)</u>	\$26,205,173	\$916,165	3.50%	\$19,205,893	73.29%	\$20,122,058	76.79%	\$4,342,256	16.57%	\$237,754	0.91%	\$24,702,068	94.26%
<u>West Charlotte High School (17)</u>	\$95,161,018	\$15,398,459	16.18%	\$3,944,225	4.14%	\$19,342,684	20.33%	\$72,696,129	76.39%	\$535,596	0.56%	\$92,574,409	97.28%
<u>West Mecklenburg High School (17)</u>	\$9,809,391	\$283,809	2.89%	\$509,403	5.19%	\$793,212	8.09%	\$2,063,752	21.04%	\$283,775	2.89%	\$3,140,739	32.02%
Grandtotal	\$769,416,001	\$72,647,538	9.44%	\$73,622,815	9.57%	\$146,270,353	19.01%	\$172,587,770	22.43%	\$9,826,672	1.28%	\$328,684,795	42.72%

MWSBE Participation 2017 Bond Projects



April 2022

PROJECT CONTROLS

CHARLOTTE-MECKLENBURG BOARD OF EDUCATION
2013 BOND SERIES-CAPITAL IMPROVEMENT PROGRAM
BUDGET STATUS REPORT

	Original Project Budget	Current Project Budget	Committed Amount	Approved Change Orders	Total Committed	Pending Commitments	To Be Committed	Prev Paid To Date	Paid To Date	Balance To Complete	Monthly Expenditure
	(A)	(B)	(C)	(D)	(E)=C+D	(F)	(G)=(B-E-F)	(H)	(I)	(J)=(B-I)	(K)=(I-H)
<u>A. REPLACEMENT & RENOVATIONS</u>											
1 Career & Technology Education Institutes Phase 1:	\$8,640,000	\$18,697,857	\$6,963,309	\$11,734,547	\$18,697,857	\$0	\$1	\$13,028,085	\$13,807,838	\$4,890,018	\$779,753
2 Davidson K-8 Conversion	\$9,500,000	\$13,461,149	\$2,131,151	\$11,329,998	\$13,461,149	\$0	\$0	\$13,461,149	\$13,461,149	\$0	\$0
3 J.M. Alexander Middle Replacement	\$30,672,000	\$29,845,539	\$4,502,518	\$25,343,021	\$29,845,539	\$0	\$0	\$29,845,539	\$29,845,539	\$0	\$0
4 Nations Ford Elementary Replacement	\$19,440,000	\$19,231,604	\$3,958,871	\$15,272,733	\$19,231,604	\$0	\$0	\$19,231,604	\$19,231,604	\$0	\$0
5 Northwest School of the Arts	\$12,420,000	\$12,868,718	\$2,047,917	\$10,820,801	\$12,868,718	\$0	\$0	\$12,868,719	\$12,868,719	\$0	\$0
6 Oakhurst STEAM Magnet Elementary/Starmount	\$5,940,000	\$5,407,812	\$3,471,397	\$1,936,415	\$5,407,812	\$0	\$0	\$5,407,812	\$5,407,812	\$0	\$0
7 Pre-K-8 Conversions Phase II: Ashley Park/ Bruns	\$24,732,000	\$19,700,807	\$4,167,671	\$15,533,138	\$19,700,809	\$0	\$0	\$19,700,807	\$19,700,807	\$0	\$0
8 Selwyn Elementary	\$2,592,000	\$4,624,831	\$744,799	\$3,880,032	\$4,624,831	\$0	\$0	\$4,624,831	\$4,624,831	\$0	\$0
9 Statesville Road Elementary	\$20,340,000	\$20,648,509	\$5,081,473	\$15,567,037	\$20,648,509	\$0	\$0	\$20,648,509	\$20,648,509	\$0	\$0
10 West Mecklenburg HS	\$0	\$3,993,543	\$3,993,543	\$0	\$3,993,543	\$0	\$0	\$3,993,543	\$3,993,543	\$0	\$0
Total Replacement & Renovations	\$134,276,000	\$148,480,367	\$37,062,648	\$111,417,722	\$148,480,370	\$0	\$2	\$142,810,597	\$143,590,350	\$4,890,016	\$779,753
<u>B. RESPONSE TO ENROLLMENT GROWTH</u>											
1 East Mecklenburg High Addition	\$12,744,000	\$12,083,804	\$4,465,200	\$7,618,603	\$12,083,803	\$0	\$0	\$12,083,803	\$12,083,803	\$0	\$0
2 Myers Park High Addition	\$22,248,000	\$11,040,942	\$1,207,493	\$9,833,448	\$11,040,942	\$0	\$0	\$11,040,941	\$11,040,941	\$0	\$0
3 Northridge Middle Addition	\$6,448,000	\$6,366,170	\$2,114,306	\$4,251,865	\$6,366,171	\$0	\$0	\$6,366,171	\$6,366,171	\$0	\$0
4 Olympic High Addition/Renovation	\$8,964,000	\$8,947,310	\$2,002,694	\$6,944,615	\$8,947,310	\$0	\$0	\$8,947,310	\$8,947,310	\$0	\$0
5 South Mecklenburg High Addition	\$18,360,000	\$16,307,355	\$2,922,282	\$13,385,073	\$16,307,355	\$0	\$0	\$16,307,355	\$16,307,355	\$0	\$0
6 Charlotte East Language Academy (FKA -New Lang	\$30,376,000	\$31,387,929	\$5,740,182	\$25,647,747	\$31,387,929	\$0	\$0	\$31,387,929	\$31,387,929	\$0	\$0
7 Rea Farms STEAM Academy	\$31,376,000	\$40,476,000	\$9,062,022	\$30,187,065	\$39,249,087	(\$5,460)	\$1,232,373	\$38,889,267	\$38,889,267	\$1,586,733	\$0
8 Renaissance West STEAM Academy (FKA New Pre-	\$30,376,000	\$31,698,952	\$5,667,388	\$26,031,564	\$31,698,952	\$0	\$0	\$31,698,952	\$31,698,952	\$0	\$0
9 New High School - South Meck/Ardrey Kell Relief *	\$0	\$9,278,699	\$9,278,699	\$0	\$9,278,699	\$0	\$0	\$9,278,699	\$9,278,699	\$0	\$0
Total Response to Enrollment Growth	\$160,892,000	\$167,587,161	\$42,460,267	\$123,899,981	\$166,360,248	(\$5,460)	\$1,232,373	\$166,000,427	\$166,000,427	\$1,586,734	\$0
<u>C. CONTINGENCY</u>											
	\$0	\$0	\$0	\$0	\$0	\$0	\$0	\$0	\$0	\$0	\$0
Total Contingency	\$0	\$0	\$0	\$0	\$0	\$0	\$0	\$0	\$0	\$0	\$0
TOTAL LOCAL BOND PROGRAM	\$295,168,000	\$316,067,527	\$79,522,915	\$235,317,703	\$314,840,618	(\$5,460)	\$1,232,375	\$308,811,024	\$309,590,777	\$6,476,750	\$779,753

Original project estimated costs approved by the Board Of Education on July 23, 2013 and approved by the voters of Mecklenburg County on November 5, 2013.

Note: Mecklenburg County's appropriated interest from COPS to increase funding for the 2013 Bond Program.

CHARLOTTE-MECKLENBURG BOARD OF EDUCATION
2017 BOND SERIES-CAPITAL IMPROVEMENT PROGRAM
BUDGET STATUS REPORT

	Original Project Budget	Current Project Budget	Committed Amount	Approved Change Orders	Total Committed	Pending Commitments	To Be Committed	Prev Paid To Date	Paid To Date	Balance To Complete	Monthly Expenditure
	(A)	(B)	(C)	(D)	(E)=C+D	(F)	(G)=(B-E-F)	(H)	(I)	(J)=(B-I)	(K)=(I-H)
<u>A. REPLACEMENT & RENOVATIONS</u>											
1 Briarwood Elementary *	\$29,091,619	\$31,762,730	\$4,766,862	\$26,609,642	\$31,376,504	\$0	\$386,226	\$30,150,145	\$31,004,857	\$757,873	\$854,712
2 Bruns Academy Replacement	\$34,207,808	\$39,784,927	\$3,731,437	\$218,050	\$3,949,487	\$0	\$35,835,441	\$94,900	\$94,900	\$39,690,027	\$0
3 Career & Technology Education Upgrades	\$10,101,734	\$10,159,765	\$2,293,944	\$4,099,152	\$6,393,096	\$77,334	\$3,689,335	\$5,118,580	\$5,184,523	\$4,975,242	\$65,943
4 Collinswood K-8 *	\$44,172,540	\$41,422,560	\$4,927,491	\$36,495,069	\$41,422,560	\$0	\$0	\$41,392,349	\$41,392,349	\$30,211	\$0
5 East Mecklenburg HS	\$12,771,594	\$10,405,411	(\$1,567,427)	\$11,881,417	\$10,313,989	\$9,000	\$82,422	\$6,562,108	\$7,610,058	\$2,795,354	\$1,047,950
6 Garinger HS	\$13,936,979	\$5,986,979	\$1,632,813	\$3,475,359	\$5,108,172	\$0	\$878,807	\$2,178,450	\$2,271,990	\$3,714,989	\$93,539
7 Harding University High *	\$18,330,263	\$13,747,878	\$2,045,267	\$11,702,610	\$13,747,877	\$0	\$0	\$13,747,877	\$13,747,877	\$0	\$0
8 Charlotte-Mecklenburg Academy (FKA -EC Specialty	\$18,957,960	\$17,699,220	\$2,175,504	\$15,523,717	\$17,699,220	\$0	\$0	\$17,699,220	\$17,699,220	\$0	\$0
9 Lansdowne Elementary	\$29,391,270	\$34,078,834	\$4,176,880	\$29,467,186	\$33,644,066	\$103,292	\$331,477	\$22,389,915	\$23,223,709	\$10,855,125	\$833,795
10 Lincoln Heights Elementary	\$3,740,478	\$4,588,675	\$577,649	\$49,054	\$626,703	\$0	\$3,961,972	\$383,738	\$400,390	\$4,188,285	\$16,652
11 Montclair Elementary Replacement *	\$28,559,390	\$28,209,390	\$2,426,761	\$25,782,629	\$28,209,390	\$0	\$1	\$28,188,096	\$28,188,096	\$21,295	\$0
12 Mountain Island k-8	\$9,218,439	\$13,239,686	\$1,406,820	\$1,390,020	\$2,796,840	\$9,912,770	\$530,076	\$472,163	\$537,358	\$12,702,328	\$65,195
13 Northwest School of the Arts	\$17,632,202	\$20,467,000	\$959,216	\$117,644	\$1,076,860	\$0	\$19,390,140	\$10,570	\$48,460	\$20,418,540	\$37,890
14 Shamrock Gardens Elementary *	\$29,890,351	\$31,358,351	\$3,739,561	\$27,153,983	\$30,893,544	\$3,500	\$461,307	\$21,858,644	\$23,857,027	\$7,501,324	\$1,998,383
15 Sharon Elementary	\$7,706,528	\$9,125,862	\$1,443,456	\$7,666,984	\$9,110,441	\$0	\$15,421	\$9,047,784	\$9,047,784	\$78,078	\$0
16 South Mecklenburg HS	\$13,352,143	\$15,622,927	\$1,653,335	\$94,238	\$1,747,573	\$0	\$13,875,354	\$2,834	\$2,834	\$15,620,093	\$0
17 E.E. Waddell Magnet HS	\$4,571,709	\$5,137,367	\$2,156,863	\$0	\$2,156,863	\$0	\$2,980,504	\$106,814	\$106,814	\$5,030,553	\$0
18 West Charlotte HS Replacement	\$109,977,166	\$105,977,166	\$12,323,528	\$91,448,524	\$103,772,052	\$144,450	\$2,060,664	\$74,453,030	\$76,264,992	\$29,712,174	\$1,811,962
19 West Mecklenburg HS	\$11,065,440	\$6,457,359	(\$2,367,345)	\$8,670,708	\$6,303,362	\$0	\$153,997	\$6,256,000	\$6,260,309	\$197,050	\$4,309
20 John Taylor Williams	\$13,964,339	\$17,432,600	\$2,202,359	\$21,670	\$2,224,029	\$0	\$15,208,571	\$526,276	\$690,914	\$16,741,686	\$164,638
Total Replacement & Renovations	\$460,639,952	\$462,664,687	\$50,704,973	\$301,867,655	\$352,572,628	\$10,250,346	\$99,841,715	\$280,639,492	\$287,634,460	\$175,030,228	\$6,994,968
<u>B. RESPONSE TO ENROLLMENT GROWTH</u>											
1 South Academy of International Languages	\$45,359,367	\$41,209,367	\$6,046,436	\$35,050,079	\$41,096,515	\$0	\$112,852	\$40,552,130	\$40,552,430	\$656,937	\$300
2 North Academy of World Languages (FKA - New K-8	\$45,359,367	\$42,198,909	\$6,022,055	\$35,999,788	\$42,021,844	\$0	\$177,065	\$41,594,143	\$41,622,847	\$576,062	\$28,704
3 South Pine Academy (FKA - New ES Nations Ford, S	\$29,173,829	\$30,822,550	\$6,793,874	\$24,015,688	\$30,809,562	\$0	\$12,987	\$30,354,411	\$30,429,342	\$393,207	\$74,931
4 New Elementary School - Bain/Lebanon Relief	\$29,988,332	\$30,455,951	\$3,559,200	\$26,554,941	\$30,114,141	\$51,786	\$290,024	\$16,923,302	\$18,105,649	\$12,350,302	\$1,182,347
5 New Elementary School - Windsor Park Relief *	\$30,422,230	\$45,297,022	\$5,831,789	\$5,449,264	\$11,281,053	\$0	\$34,015,969	\$3,458,854	\$3,555,575	\$41,741,447	\$96,721
6 New Elementary School - Elon/Hawk Ridge Relief *	\$30,426,712	\$51,856,962	\$14,212,094	\$35,170,706	\$49,382,801	\$0	\$2,474,161	\$11,972,239	\$12,114,717	\$39,742,244	\$142,479
7 New Elementary School - Hidden Valley Relief	\$30,518,345	\$43,579,387	\$4,439,505	\$36,548,935	\$40,988,440	\$0	\$2,590,947	\$2,409,549	\$2,415,448	\$41,163,939	\$5,899
8 Palisades High School	\$109,908,793	\$108,908,793	\$11,322,884	\$97,051,295	\$108,374,179	(\$2,538)	\$537,152	\$85,485,158	\$89,019,791	\$19,889,002	\$3,534,632
9 New High School - South Meck/Ardrey Kell Relief *	\$110,287,621	\$158,786,358	\$12,429,793	\$125,624,701	\$138,054,494	\$0	\$20,731,864	\$5,626,791	\$5,822,460	\$152,963,898	\$195,669
Total Response to Enrollment Growth	\$461,444,596	\$553,115,298	\$70,657,631	\$421,465,399	\$492,123,029	\$49,248	\$60,943,022	\$238,376,577	\$243,638,259	\$309,477,039	\$5,261,682
<u>C. CONTINGENCY</u>											
	\$0	\$3,500,000	\$0	\$0	\$0	\$0	\$3,500,000	\$0	\$0	\$3,500,000	\$0
Total Contingency	\$0	\$3,500,000	\$0	\$0	\$0	\$0	\$3,500,000	\$0	\$0	\$3,500,000	\$0

CHARLOTTE-MECKLENBURG BOARD OF EDUCATION
2017 BOND SERIES-CAPITAL IMPROVEMENT PROGRAM
BUDGET STATUS REPORT

	Original Project Budget	Current Project Budget	Committed Amount	Approved Change Orders	Total Committed	Pending Commitments	To Be Committed	Prev Paid To Date	Paid To Date	Balance To Complete	Monthly Expenditure
	(A)	(B)	(C)	(D)	(E)=C+D	(F)	(G)=(B-E-F)	(H)	(I)	(J)=(B-I)	(K)=(I-H)
TOTAL LOCAL BOND PROGRAM	\$922,084,548	\$1,019,279,985	\$121,362,604	\$723,333,054	\$844,695,657	\$10,299,594	\$164,284,736	\$519,016,069	\$531,272,719	\$488,007,266	\$12,256,650

Original project estimated costs approved by the Board Of Education on July 25, 2017 approved by the voters of Mecklenburg County on November 7, 2017.

*Project included in \$33.2M early funding approved by Board Of Education on August 9, 2016 and Mecklenburg Board of County Commissioners on September 6, 2016. On February 19, 2019 an additional \$8M was approved for New Elementary School - Elon/Hawk Ridge Relief site.

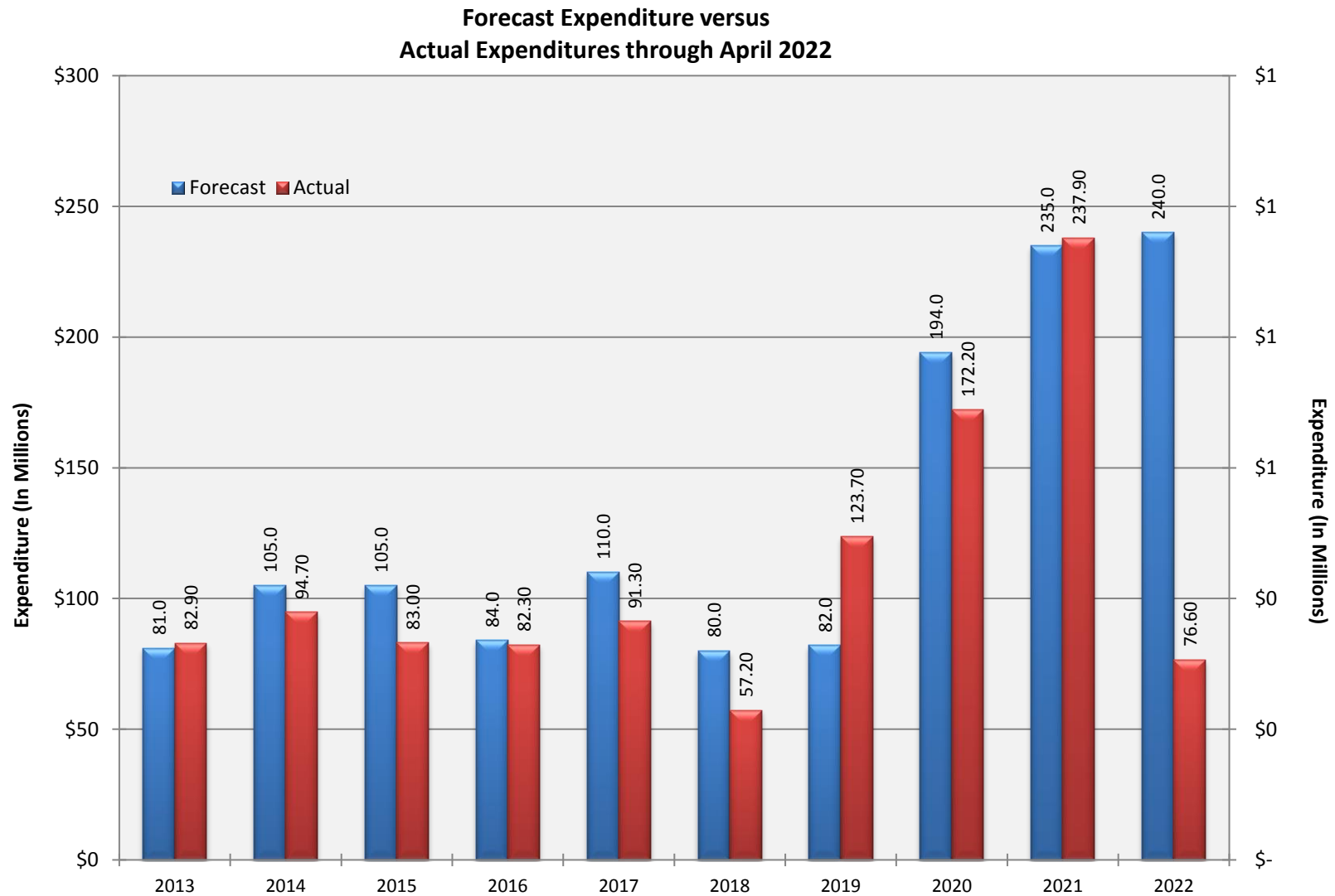
*Current Budget includes an additional \$89.2M to fund increase land and construction costs. The additional funds were approved by the Board of County Commissioners on June 16, 2020.

Charlotte-Mecklenburg Board of Education
Approved Construction or Repair Change Orders*
Reporting Period: April 2022

Funding Source	Project Name	Contractor	Description	Change Order Amount	Revised Contract Value
	None this reporting period				

* Not previously presented to the Board of Education for Approval (less than \$90,000)

10 YEAR EXPENDITURE SUMMARY



GLOSSARY

Glossary

- **Project Management** – This section includes updates from our project managers and describes the currently active construction projects. This includes from Board of Education award thru final completion.
- **Design and Bidding** – This section contains updates from our design managers on the projects currently in the design phase. This phase from design award to Board of Education award of construction.
- **Controls** – Section includes misc. updates from controls group including expenditures, related Board of Education awards during the reporting period, cash flow information. This section covers all projects from approved bond through final expenditures and bond close with the county.
- **MWSBE** – Contains updates from the MWSBE Director and team, including current activity and summaries of the participation by MWSBE providers on our program.
- **Bond Progress Summary** – Provides a summary of bond financials including bond value, committed/pending amounts, paid to date, expended this month.
- **Project Procurement Dates** - Next 90 Days major project bid activity.
- **Mobile Swing Space Utilization** – Includes a summary of program related swing space currently in use and the schedule of use.
- **Bond Summary Schedule** – Current program summary schedule including planned design, construction and FF&E. These activities are fed from detailed schedules and are fine-tuned as project information is available.
- **Project Contractor Teams**; Provides summary of turnover dates for completed/closed projects since 2010 including architects/designers and contractors.
- **School Site Location Maps** – General location of bond projects (2017) by type.
- **Project Status Report** – This section of the report provides a summary of the bond project scope, current estimate (all sources), planned occupancy/actual occupancy date. It also provides a current status of the design phase, construction progress and a brief update. The report currently includes 2013 and 2017 bond projects that have or will be completed after to August 2016.
- **MWSBE Participation Report** – The MWSBE report provides a summary of the participation on the 2013 & 2017 Bond funded projects.
- **Project Progress Photos** – Includes photos of active construction projects.
- **Budget Summary Reports** – These reports are by funding source and summarize financial activity to date on the projects. This includes original and current project estimates, committed values, amounts paid to date, balances and monthly expenditures.
- **Change Orders < \$90,000** – This month's approved construction or repair change orders < \$90,000.
- **Expenditure Summary** – Provides a summary of Bond Expenditures by calendar year.