

Capital Improvement Program

Monthly Bond Report
March 2022



New Elementary School Bain, Lebanon, Piney Grove Relief



CAPITAL PROGRAM SERVICES Capital Improvement Program

MARCH 2022 MONTHLY BOND REPORT

PROGRAM OVERVIEW

- Project Management
- Design and Bidding
- Controls
- MWSBE
- Bond Progress Summary
- Project Procurement - Next 90 Days
- Swing Space Utilization
- Bond Summary Schedule
- Project Contractor Teams; Projects in Design/Construction and Substantially Completed/Closed
- School Site Location Maps
 - Elementary Schools
 - Middle Schools
 - High Schools & Specialty Schools

PROJECT STATUS REPORT

MWSBE PARTICIPATION REPORT

PROJECT PROGRESS PHOTOS

PROJECT CONTROLS

- Budget Summary Reports
 - 2013 Bond Series
 - 2017 Bond Series
- Change Orders < \$90,000
- Expenditure Summary

GLOSSARY

PROGRAM OVERVIEW

PROJECT MANAGEMENT

The following is a summary of the activity on the bond funded projects in construction during the month of March.

The construction manager for **East Mecklenburg High School** has moved into final finishes. The building has conditioned air running, ceiling grid installed and above ceiling inspections are underway. The group bathrooms ceramic tile floors and walls are being finished and building finish paint is being applied. The exterior finishes are being applied and the entrance canopy is being constructed. The sidewalks and ramps around the building are also being installed. The new classroom wing is scheduled for occupancy in August 2022.

The **Garinger Addition and Renovation** construction manager continued with interior and exterior activities. The exterior insulated metal panel installations began on the north face of the building and will continue around the building counter clockwise. Above ceiling inspections passed on the first floor allowing ceiling tile installations to proceed. Final paint was installed on the first floor and second floor has started. The casework arrived and installation began in select areas and preparations for the VCT flooring has also started. Landscaping mobilized to begin installations in available areas.

The **Lansdowne Elementary School** construction manager is moving into final finishes. The classroom wings have completed above ceiling work and ceiling grid is wrapping up. They are also completing hard tile at the group bathrooms and the kitchen quarry tile is being installed. Duke Energy has run the primary feeders to the building and permanent power will be energized shortly. The finish grades around the building are established allowing site sidewalks and hardscapes to be completed. Occupancy of the replacement school is scheduled for August 2022. Upon completion of the new building demolition and remaining site work will commence and be completed in 2023.

The **New Elementary School (Bain, Lebanon, Piney Grove Relief)** construction manager continues on interior finishes. They are working on ceiling grid allowing above ceiling work to finalize. The group bathrooms ceramic tile floors are being completed. Drywall is now complete and final finish is progressing. The mechanical equipment is set and rough-ins are nearing completion. The site contractor is working on underground storm drain piping and associated piping to the roof leaders. They are also working on hardscapes around the building. Supply chain issues are impacting scheduled delivery dates of electrical panels forcing the contractors to look at substitutions and construction sequencing. The team has also received the design for the required signal at the school entrance; this road related work will continue into the fall. This new 45-classroom school will be located next to the existing Mint Hill Middle School. The project is scheduled for occupancy in August 2022.

The **New Elementary School (Elon, Hawk Ridge, Polo Relief)** construction phase change order was approved by the BOE and notice to proceed was issued to the construction manager. The construction manager mobilized on site and began surveying and site demolition. The new 45-classroom relief elementary school is schedule to be occupied in August 2023.

The **New Elementary School (Hidden Valley, JW Grier, Newell Relief)** construction phase change order was approved by the BOE and notice to proceed was issued to the construction manager. This new 45-classroom school will be located next to Northridge Middle School and is scheduled for occupancy August 2023.

The **New High School (South, Ardrey Relief)** construction phase change order was approved by the BOE and notice to proceed was issued to the construction manager. The construction manager mobilized on site and began surveying and site demolition. The new 100-classroom relief high school is schedule to be occupied in August 2024.

The construction manager for the **Palisades High School** (*fka New High School Olympic Relief*) continued with finishes in the athletics, cafeteria and auditorium areas. The pool's surface was completed allowing the pool to be filled. Acoustical wall panels were installed in the gym, dance, auxiliary gym, music and choral rooms. Mechanical,

electrical and plumbing trim-out continued throughout the building with cover plates and devices. The landscaper continued to install sod and plants throughout the campus. The architect began review the classroom buildings for compliance with the documents to generate the punch list. The 100-classroom relief high school is scheduled to be occupied in August 2022.

The **Shamrock Gardens Elementary School** construction manager continued to push the project to completion. Ceiling tile installations continued along with flooring and casework throughout the classroom building. Final clean was performed in the administration, media center, music and arts spaces in preparation for review by the architect in early April. The bus lot was paved and striping will be performed in April. The new 45-classroom replacement elementary school is scheduled to be occupied August 2022.

The trade contractors continue to work throughout the **West Charlotte High School** facility. Finishes throughout the facility are progressing well. The VCT has been installed throughout, and they are completing floors in the classroom wing corridors. Ceiling tiles have been installed in most areas as above ceiling inspections are being finalized and the finish coat of paint is being applied. Casework and shelving is also complete in most areas. The auditorium seats have been delivered and installation is underway. The ceramic tile lane markers at pool are complete and work on the pool deck is progressing. The site contractor continues to work on hardscapes around the building. The buffer wood privacy fence is installed and site landscaping is ongoing. The team is now working with administration to finalize transition plans from Phase 1 to Phase 2. The stadium improvements including the field house and concession stands are nearing completion. The new bus lot base layer of asphalt is in place. The project is scheduled to be occupied August 2022. Once the new school is occupied the existing school will be demolished and final site work will take place with final project completion in August 2023.

DESIGN AND BIDDING

The following is a summary of the activity on the bond funded projects in design and bidding phase during the month of March.

The **E.E. Waddell High School** project's construction contract was approved by the BOE and is being processed. Once the contract is executed the contractor will be released to start procurement activities; onsite construction will begin in June.

The **JT Williams Secondary Montessori** project continues to progress with LUESA and City Engineering permit approvals. The construction manager has started bid-procurement activities. The project's base scope focuses on required civil improvements, architectural and MEP renovations in the 100 and 200 buildings. The renovations to the remaining campus buildings mechanical and classroom lighting systems are being designed and will be bid as alternates. A 10-classroom modular will be used for swing and future space at the school site. Phasing plans to execute the project have been coordinated with the principal. Project construction is scheduled to start June 2022 and be completed August 2024.

The **Mountain Island Lake Academy** project continues to progress with LUESA and City Engineering permit approvals. The construction manager has started bid-procurement activities. The remaining scopes of work are scheduled for bid and award in late May. The project consists of a building addition containing a middle school gymnasium and visual and performing arts classrooms. Construction is scheduled to start in the summer 2022 and the project is scheduled to be completed August 2023.

The **New Bruns Avenue Elementary (Replacement)** project continues to progress in the schematic design phase. CMS due diligence activities continue to progress. This new 45-classroom school facility is being designed with a

full size gym and associated areas in coordination with Charlotte-Mecklenburg Park & Recreation. The school is scheduled for occupancy August 2024.

The **New Elementary School (Windsor, Winterfield, Idlewild Relief)** project continues to progress with LUESA and City Engineering permit approvals. The construction manager continues with their procurement phase of the remaining bid packages. The required CDOT improvements are in early design and CDOT has agreed the minor road improvements needed will not impact the release of the building permit. This new 45-classroom school facility is scheduled for occupancy August 2023.

CONTROLS

Expenditures for the month of March were \$33.3M. This brings our fiscal year to date total to \$174.9M against the 2022 fiscal year cash flow projection of \$260M. Expenditures for the month included the purchases of the New High School-South Mecklenburg/Ardrey Kell Relief and New Elementary-Windsor Park Relief sites. The New High School-South Mecklenburg/Ardrey Kell Relief site was purchased with available Mecklenburg County funding from prior 2007 and 2013 Bond sales. These available funds were also utilized to reclass expenditures from 2017 Bond projects to expend funds from the older Bond sales. The 2017 funds available as result of utilizing older bond sales proceeds will be used to address supply chain and increased construction costs related to the COVID-19 pandemic.

Board of Education approval was received on March 23, 2022 for the construction contract for renovations to E.E. Waddell High, phase two construction for the New Elementary School (Elon, Hawk Ridge, Polo Ridge Relief), phase two construction for the New Elementary School (Hidden Valley, J.W. Grier, Newell Elementary Relief) and New High School Ardrey Kell/South Mecklenburg Relief projects.

The Controls team continues to submit notices of potential changes at school sites so senior staff can adequately evaluate issues. Additionally, the Controls team continues the processing of contracts, invoices, preparing notices of potential change, change orders, pay applications and check requests for projects under construction. Captured construction cost data is used to prepare financial reports such as detailed cost reports, budget summaries, reconciliation to CMS books, revisions to and updated cash flows and complete special financial requests by CMS and Mecklenburg County. This process, along with data compilation and management, allows senior staff to provide the proper guidance/direction and accurate information to the program stakeholders.

MWSBE

As of March 2022 the overall MWSBE utilization percentage related to design and construction of the 2017 bond projects is 41.58% which includes 18.49% participation by minority contractors, 21.90% by women contractors and 1.18 % participation by small business contractors. This accounts for more than \$325 million of utilization by Minority, Women and Small Business Contractors.

The Diversity & Inclusion Office of Charlotte-Mecklenburg Schools continued to conduct several individual virtual orientations with new MWSBE contractors and prime contractors. In addition, team members also attended/hosted the following outreach sessions/pre-bid meetings and/or workforce development opportunities:

Outreach Sessions:

- CMS bus lot pre-proposal meeting
- She Built This City Change Makers Awards
- Carolinas-Virginia Minority Supplier Development Council annual meeting
- Mountain Island new gym pre-bid meeting hosted by Whiting-Turner
- JT Williams pre-bid meeting hosted by New Atlantic
- American Contract Compliance Association National Training Institute Planning meetings

Good Faith Efforts:

- New Elementary School Windsor Park, Winterfield, Idlewild Relief remaining packages MWSBE participation documentation

Commendation:

Charlotte-Mecklenburg Schools received the 2022 Regional Public Corporation of the Year Award from the Carolinas-Virginia Minority Supplier Development Councils, Inc. The award is presented to a regional public corporation that exemplifies excellence in its supplier diversity initiatives through mentorship, active pursuit of opportunity creation, community awareness and involvement and the volume of business currently conducted with Carolinas-Virginia MSDC Minority Business Enterprises. CMS was commended for the depth of inclusion efforts to provide opportunities to diverse firms, increase in overall spend/utilization and for its workforce development initiatives.

MWSBE Best Practice Sharing with North Carolina Department of Administration:

CMS was invited by the NC Historically Underutilized Businesses to share MWSBE best practices with members of the North Carolina State Cabinet Agencies, other State Support Agencies, Community Colleges and Universities. Topics covered included role of supplier diversity professional, importance of procurement planning spend analysis, good faith efforts, strategic sourcing, and relationship building.

Team Transition:

Jason Deans, Diversity Specialist, has accepted a new position as the Project Diversity and Development Manager for Samet Corporation. He will oversee the Charlotte region supplier diversity program. Jason has been instrumental in the overall growth, development, and utilization of MWSBE firms for Charlotte-Mecklenburg Schools. We commend him on this new leadership opportunity.

Over the next month, team members will continue to work with contractors interested in bidding on the upcoming school projects utilizing various virtual tools to communicate. Contractors are encouraged to review bid advertisements in Charlotte Observer and register as a vendor on the North Carolina Interactive Purchasing System for notification of the various opportunities.

BOND PROGRESS SUMMARY As of March 2022

Funding Source and Value		Amount Committed/Pending	Amount Paid to Date	Amount Expended This Period
2007 Bond	\$465,000,000	\$465,000,000	\$465,000,000	\$7,723,070
2013 Bond	\$316,067,527	\$314,835,158	\$308,811,024	\$16,292,059
2017 Bond	\$1,019,279,985	\$847,719,986	\$519,016,069	\$9,240,167
Grand Total	\$1,800,347,512	\$1,627,555,144	\$1,292,827,093	\$33,255,296

UPCOMING MAJOR CONSTRUCTION PROCUREMENT DATES *Three Month Look Ahead*

<u>School Name</u>	<u>Bid Dates*</u>
New ES (Windsor, Winterfield, Idlewild) <i>(Bids managed by Rodgers Construction)</i>	April 2022
Mountain Island Lake Academy <i>(Bids managed by Whiting-Turner)</i>	April 2022
J.T. Williams Secondary Montessori <i>(Bids managed by New Atlantic)</i>	April 2022
Lincoln Heights	June 2022

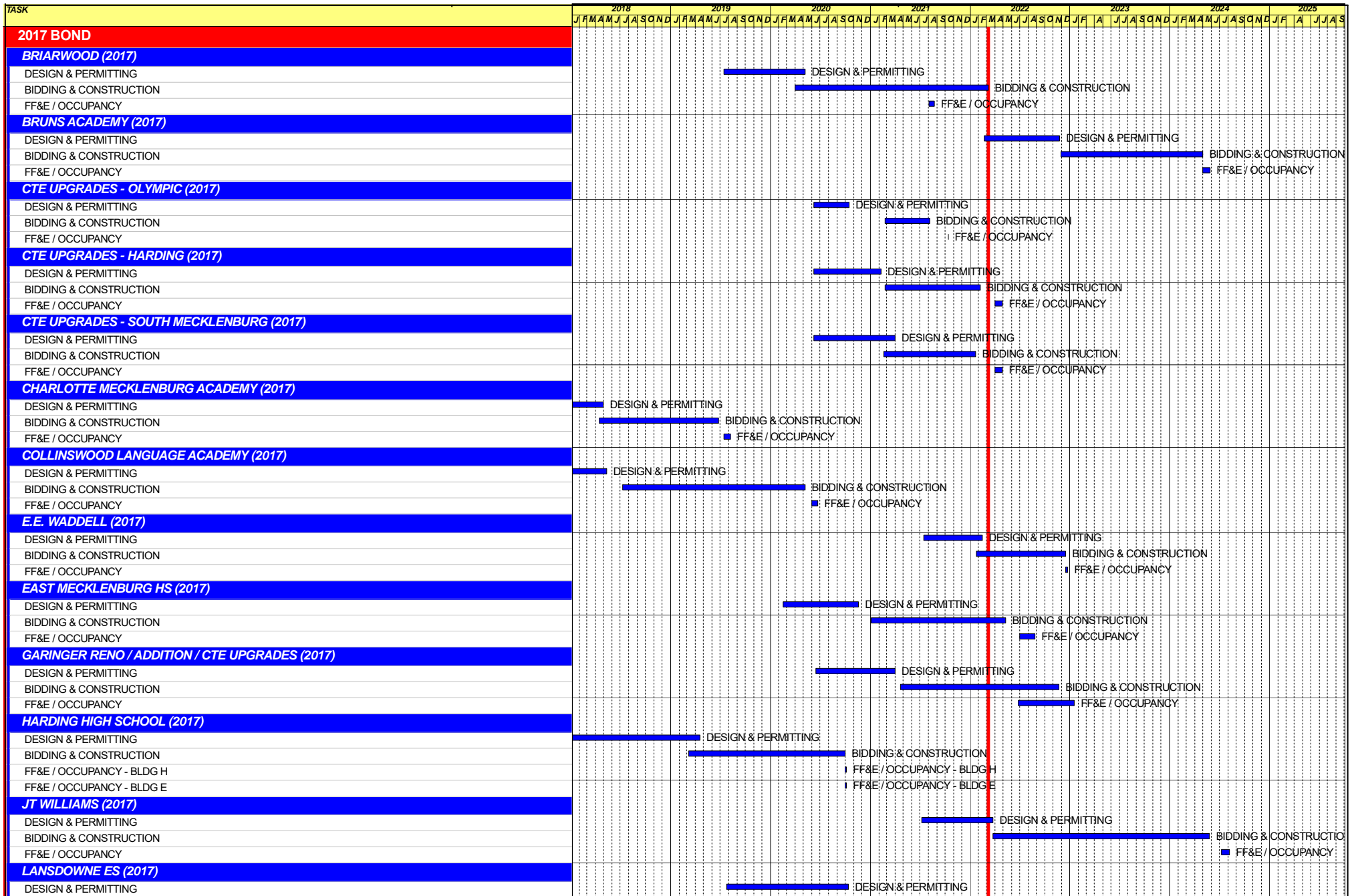
** NOTE: Work In Progress...Dates Subject to Change.*

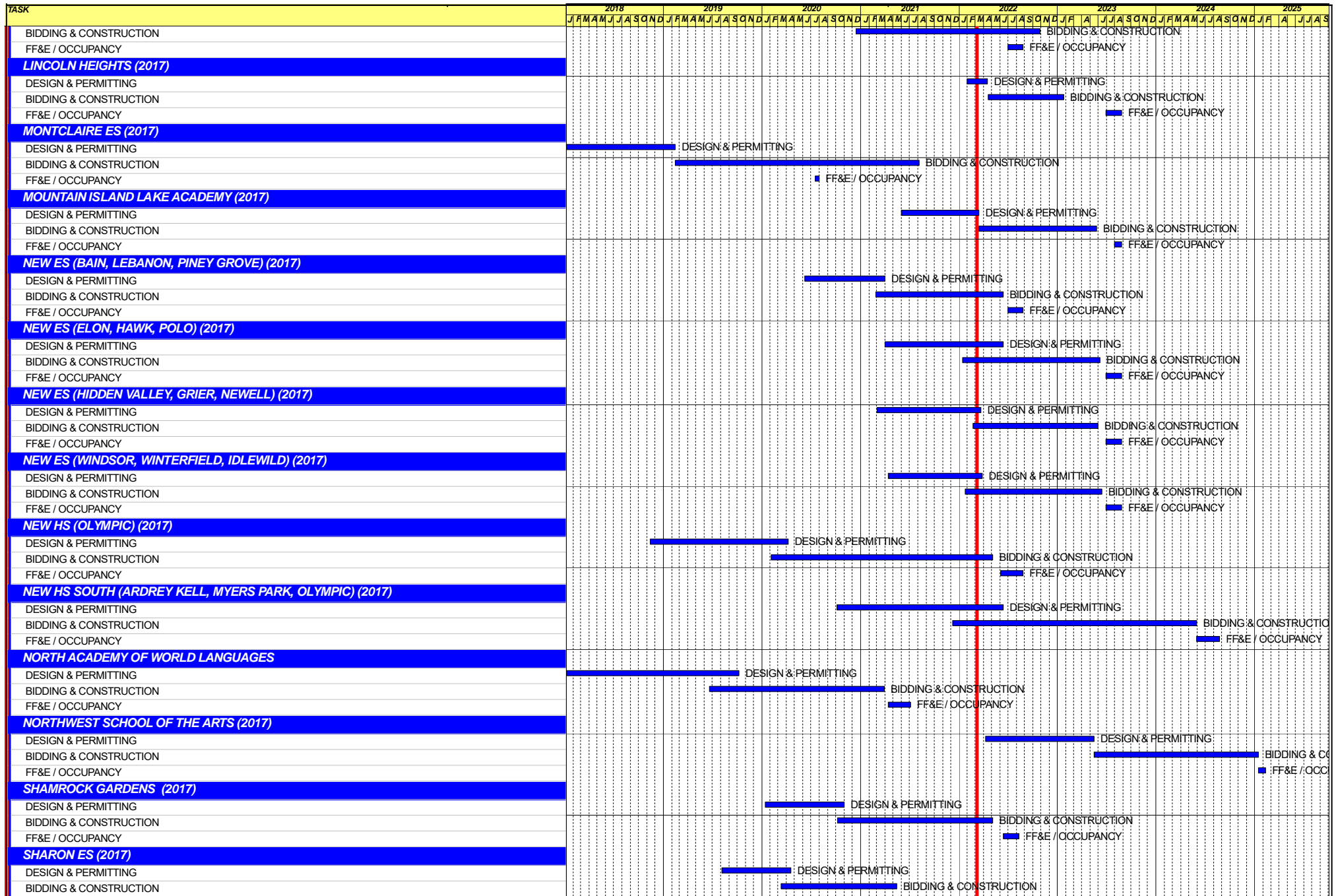
SWING SPACE UTILIZATION

Creating a temporary space for students and staff to occupy during construction on a school’s campus has proven to be beneficial to the project’s schedule and cost and overall safety and efficiency of school operations. When the renovation or expansion of a facility is performed and the facility must remain functionally operational, there are benefits to the owner in using swing space.

We have successfully utilized both onsite and offsite swings. The most desirable swings are “offsite” ones. Onsite swing using mobiles or modulars, likewise has been successfully used. The following is a summary of current swing options planned or in use.

<u>School</u>	<u>No. of Mobiles/Relocation Site</u>	<u>Status (From – To)</u>
Shamrock	Lincoln Heights	August 2020 – August 2022





Capital Improvements Program
Projects in Design or Under Construction

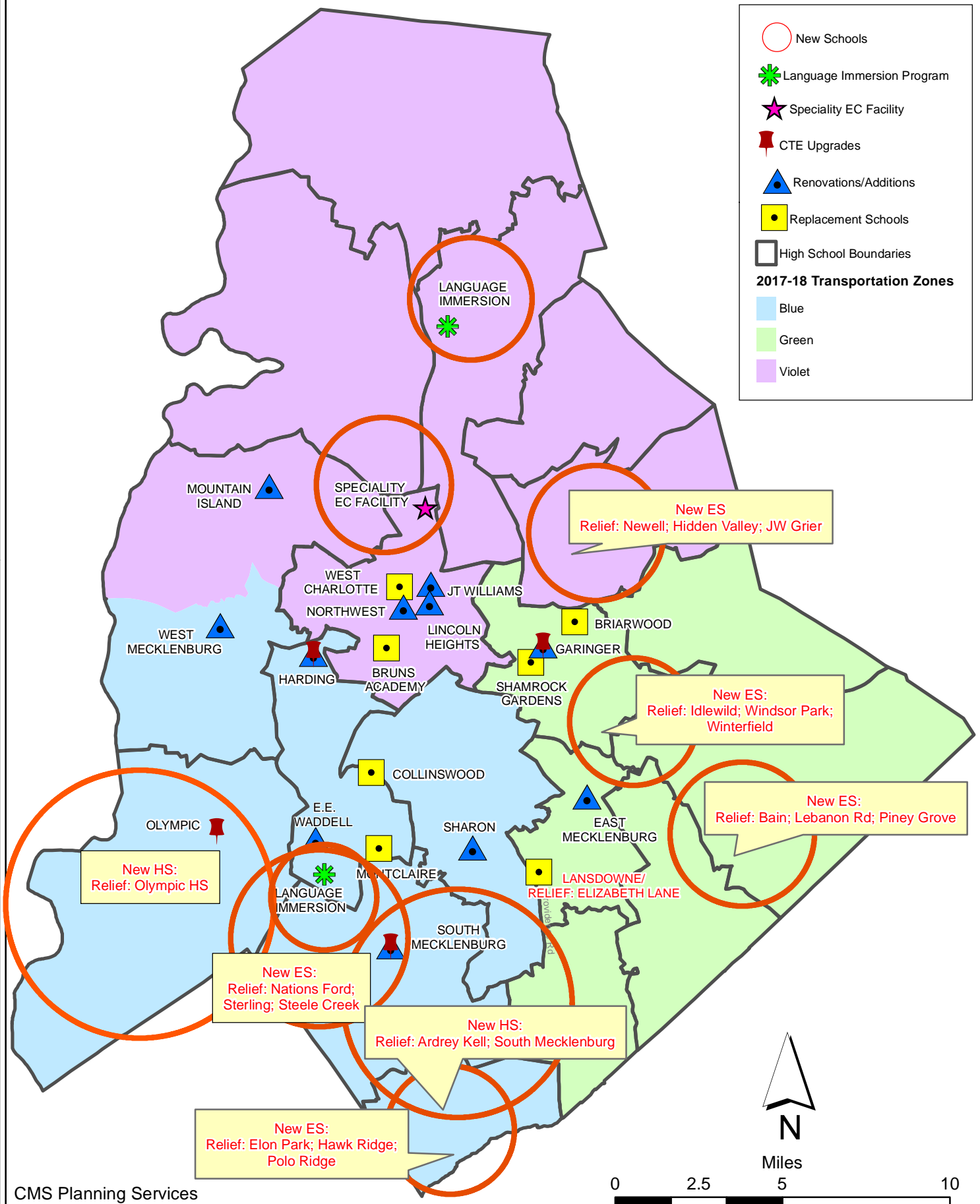
School	Architect	General Contractor/CM
Projects In Design		
J.T. Williams (17)	FWA	New Atlantic
Lincoln Heights Repurpose (17)	Neighboring Concepts	TBD
Mountain Island School (17)	ADW	Whiting-Turner
New Bruns Avenue ES	ADW	Edifice, Inc.
New ES (Windsor, Winterfield, Idlewild) (17)	Neighboring Concepts	Rodgers-Holt Brothers
Projects in Bid/Award/Construction Phase		
East Mecklenburg High School (17)	Morris Berg	Turner Construction
E.E. Waddell (17)	Moseley	Randolph & Sons
Garinger Addition/Renovation & CTE (17)	LS3P	Balfour Beatty
Lansdowne Elementary School Replacement (17)	Perkins Eastman	Edifice, Inc.
New ES (Bain, Lebanon Rd, Piney Grove) (17)	FWA	Metcon
New ES (Elon,Hawk Ridge, Polo Ridge) (17)	Little Diversified	Balfour Beatty
New ES (Hidden Valley, JW Grier, Newell) (17)	ADW	Edifice, Inc.
New HS (South, Ardrey) (17)	Ratio	Messer
Palisades High School (Olympic Relief) (17)	Little Diversified	Edifice, Inc.
Shamrock Gardens Elementary School Replacement (17)	Little Diversified	Rodgers-Holt Brothers
West Charlotte High School (17)	LS3P	Rodgers-Holt Brothers

Capital Improvements Program
Projects Substantially Completed/Closed *

School	Turnover Year	Architect	General Contractor
CTE (Harding, Olympic, South) (17)	Jan-22	MPS	Branch Brownstone
Briarwood Elementary School Replacement (17)	Aug-21	ADW	New Atlantic Contracting
Montclair Elementary School (17)	Aug-21	WHN	Messer Construction
North Academy of World Languages (17)	Aug-21	ADW	New Atlantic Contracting
Sharon Elementary School (17)	Aug-21	Clark Nexsen	Samet
South Academy of International Languages (17)	Aug-21	FWA	Messer Construction
South Pine Academy (17)	Aug-21	FWA	Metcon
West Mecklenburg Gym (17)	Aug-21	Moseley	Barnhill/D.A. Everett
Collinswood Language Academy (17)	Aug-20	Perkins Eastman	Turner Construction
Harding High School Renovation (17)	Aug-20	SFLA	Barnhill Contracting
Rea Farms STEAM Academy (13)	Aug-20	Little Diversified	Balfour Beatty
Ashley Park K-8 Conversion (13)	Aug-19	ADW	Turner Construction
Druid Hills K-8 Conversion (13)	Aug-19	ADW	Edifice, Inc.
Selwyn Elementary (13)	Aug-19	Clark Nexsen	Balfour Beatty
Charlotte Mecklenburg Academy (17)	Aug-19	KSQ	Edifice, Inc.
Davidson K-8 (13)	Aug-19	Little Diversified	Gilbane
CTE - North Mecklenburg High (13)	Aug-19	LS3P	Shiel Sexton
CTE - Garinger (13)	Mar-19	LS3P	Hostetter & Son
CTE - Independence (13)	Mar-19	LS3P	D.E. Brown
CTE - West Mecklenburg (13)	Mar-19	LS3P	Hostetter & Son
Charlotte East Language Academy (13)	Aug-18	Morris Berg	Edifice, Inc
Myers Park High School Phase 3 (13)	Aug-18	Boomerang Design	BE&K
Northridge Middle (13)	Aug-18	Morris Berg	Barnhill Contracting
Myers Park High Bldg 2 (13)	Feb-18	Boomerang Design	BE&K
East Mecklenburg High Addition (13)	Jan-18	Bergman (fna Gantt Huberman)	Edifice, Inc.
J.M. Alexander Middle (13)	Aug-17	FWA Group	Balfour Beatty
Northwest School of the Arts Renovation (13)	Aug-17	Moseley	Turner Construction
Renaissance West STEAM Academy (13)	Aug-17	Little Diversified	Rodgers Construction
South Mecklenburg High Addition (13)	Jul-17	SFLA	Barnhill Contracting
Myers Park High Bldg 1 (13)	Sep-16	Boomerang	KBR
Statesville Road Elementary (13)	Aug-16	ADW	JE Dunn
Nations Ford Elementary (13)	Aug-16	Wash Hatem Nelson	Messer Construction
Olympic High Addition (13)	Aug-16	McMillan, Pazdan, Smith	Turner Construction
Lawrence Orr Elementary (07)	Aug-15	Cort Architectural Group	DH Griffin/Metcon
Parkside Elementary (07)	Aug-15	Wash Hatem Nelson	Clancy & Theys
Hawthorne High Renovations (07)	Aug-15	Morris-Berg	Balfour Beatty
Newell Elementary (07)	Aug-15	Perkins Eastman	New Atlantic Contracting
Ranson Middle (07)	Aug-15	Morris-Berg	Edifice, Inc.
Vance High	Jan-15	LS3P	Matthews Construction Co., Inc.
Garinger High - Renovations/Addition	Aug-14	Adams Group Architects	Turner Construction
Olympic High - Stadium	Aug-14	Site Solutions	Turner Construction
West Mecklenburg High - Stadium	Aug-14	Site Solutions	Turner Construction
Collinswood - Indoor Air Quality	Aug-14	PEA	The Bowers Group
Lansdowne - Indoor Air Quality	Aug-14	AeroRaq	Tyler 2
McKee Road - Indoor Air Quality	Aug-14	McCracken & Lopez	Godfrey Construction
Garinger High - Track & Field	Jul-14	Site Solutions	Turner Construction
Independence High - Gym	Jun-14	Shook Kelly	Shelco, Inc. (CM)
Palisades Park Elementary	May-14	Wash Hatem Nelson	Clancy & Theys
East Mecklenburg High Auditorium	Jan-14	Gantt Huberman Associates	Godfrey Construction Co., Inc.

Projects closed prior to 2014 are not shown

CMS Capital Improvement Plan 2017 Bond Projects



PROJECT STATUS REPORT



Monthly Project Status 2017 Bond Summary March 2022

Project	Current Project Estimate	Project Scope	** Occupy On	Design Phase	Construction Progress	Project Status
Briarwood Elementary School (17)	\$ 31,762,730	45-classroom replacement facility; replaces school built in 1956.	August 2021	Complete	99 %	The construction manager for Briarwood Elementary Replacement School turned over the remaining parking lots and completed the phase two construction activities. The construction manager is working through the punch list and final closeout.
Bruns Academy (17)	\$ 39,784,927	New 45-classroom elementary school (K-5); replaces old school built in 1969.	August 2024	Schematic	0 %	The New Bruns Avenue Elementary (Replacement) project continues to progress in the schematic design phase. CMS due diligence activities continue to progress. This new 45-classroom school facility is being designed with a full size gym and associated areas in coordination with Charlotte-Mecklenburg Park & Recreation.
Career and Technology Education (17)	\$ 10,159,765	Phase I CTE upgrades at Olympic, Harding, Garinger and South Mecklenburg.	January 2022	Complete	98 %	The CTE projects at Harding and South Mecklenburg have completed the construction renovations. The contractor is still working on punch list items and a few material issues that required substitute equipment. The South Mecklenburg culinary kitchen is now open to students and staff. The project at South Mecklenburg renovated the old kitchen area into a culinary arts lab and classroom. The Harding project still has the temporary construction partition walls in place. The CTE department is working through delays with the FF&E that is planned for use in the new Harding suite. The Harding project renovated the existing classrooms in the auditorium building to develop a suite of technology classrooms.
Charlotte-Mecklenburg Academy (17)	\$ 17,699,220	New EC school located on the old Statesville Elementary School site.	August 2019	Complete	100 %	Project is complete.

Monthly Project Status

2017 Bond Summary

March 2022

Project	Current Project Estimate	Project Scope	** Occupy On	Design Phase	Construction Progress	Project Status
Collinswood Language Academy (17)	\$ 41,422,560	New 63-classroom K-8 facility on the site of the Smith Family Center.	August 2020	Complete	100 %	Project is complete.
E.E. Waddell (17)	\$ 5,137,367	Repurpose current E.E. Waddell to reopen as a magnet high school.	August 2023	Complete	0 %	The E.E. Waddell High School project's construction contract was approved by the BOE and is being processed. Once the contract is executed the contractor will be released to start procurement activities; onsite construction will begin in June.
East Mecklenburg High School (17)	\$ 13,858,594	This project will provide for the design, and construction of a new 30 classroom building.	August 2022	Complete	75 %	The construction manager for East Mecklenburg High School has moved into final finishes. The building has conditioned air running, ceiling grid installed and above ceiling inspections are underway. The group bathrooms ceramic tile floors and walls are being finished and building finish paint is being applied. The exterior finishes are being applied and the entrance canopy is being constructed. The sidewalks and ramps around the building are also being installed.
Garinger High School (17)	\$ 5,986,979	Project includes the design and construction for renovations of 300 building and a new 16 classroom building.	January 2023	Complete	43 %	The Garinger Addition and Renovation construction manager continued with interior and exterior activities. The exterior insulated metal panel installations began on the north face of the building and will continue around the building counter clockwise. Above ceiling inspections passed on the first floor allowing ceiling tile installations to proceed. Final paint was installed on the first floor and second floor has started. The casework arrived and installation began in select areas and preparations for the VCT flooring has also started. Landscaping mobilized to begin installations in available areas.
Harding High School (17)	\$ 13,747,878	Renovation of the kitchen, cafeteria, existing gym (aux) and the addition of a new gym.	August 2020	Complete	100 %	Construction Manager has change items that will be completed summer 2021 and is finalizing financial reconciliation.

Monthly Project Status

2017 Bond Summary

March 2022

Project	Current Project Estimate	Project Scope	** Occupy On	Design Phase	Construction Progress	Project Status
JT Williams (17)	\$ 15,732,600	Project includes building renovations to J.T. Williams Montessori magnet.	August 2024	Construction Documents	0 %	The JT Williams Secondary Montessori project continues to progress with LUESA and City Engineering permit approvals. The construction manager has started bid-procurement activities. The project's base scope focuses on required civil improvements, architectural and MEP renovations in the 100 and 200 buildings. The renovations to the remaining campus buildings mechanical and classroom lighting systems are being designed and will be bid as alternates. A 10-classroom modular will be used for swing and future space at the school site. Phasing plans to execute the project have been coordinated with the principal. Project construction is scheduled to start June 2022 and be completed August 2024.
Lansdowne Elementary School (17)	\$ 34,078,834	New 45-classroom school; replaces old school built in 1959 and relieve crowding at Elizabeth Lane ES.	August 2022	Complete	70 %	The Lansdowne Elementary School construction manager is moving into final finishes. The classroom wings have completed above ceiling work and ceiling grid is wrapping up. They are also completing hard tile at the group bathrooms and the kitchen quarry tile is being installed. Duke Energy has run the primary feeders to the building and permanent power will be energized shortly. The finish grades around the building are established allowing site sidewalks and hardscapes to be completed.
Lincoln Heights Elementary School (17)	\$ 4,588,675	Repurpose and reopen as magnet school.	August 2023	Construction Documents	0 %	Shamrock Gardens will be utilizing the Lincoln Heights Elementary building as swing space August 2020 - August 2022. Playgrounds were replaced and new digital signage was installed summer 2020. Based on Board approval in May 2021 the occupancy date has been moved to 2023.
Montclair Elementary School (17)	\$ 28,559,390	New 45-classroom replacement facility replacing school built in 1958.	August 2020	Complete	99 %	The construction manager completed the final phase of work on the project. The new 45-classroom elementary school building was occupied in August.

Monthly Project Status

2017 Bond Summary

March 2022

Project	Current Project Estimate	Project Scope	** Occupy On	Design Phase	Construction Progress	Project Status
Mountain Island Lake Academy (17)	\$ 10,488,400	K-8 Phase 2 - New gymnasium and specialty classrooms.	August 2023	Complete	0 %	The Mountain Island Lake Academy project continues to progress with LUESA and City Engineering permit approvals. The construction manager has started bid-procurement activities. The remaining scopes of work are scheduled for bid and award for late May. The project consists of a building addition containing a middle school gymnasium and visual and performing arts classrooms. Construction is scheduled to start in the summer 2022 and the project is scheduled to be completed August 2023.
New Elementary School (Bain, Lebanon, Piney Grove) (17)	\$ 30,455,951	New 45-classroom elementary school; relieves crowding at Bain, Lebanon Road, Piney Grove.	August 2022	Complete	64 %	The New Elementary School (Bain, Lebanon, Piney Grove Relief) construction manager continues on interior finishes. They are working on ceiling grid allowing above ceiling work to finalize. The group bathrooms ceramic tile floors are being completed. Drywall is now complete and final finish is progressing. The mechanical equipment is set and rough-ins are nearing completion. The site contractor is working on underground storm drain piping and associated piping to the roof leaders. They are also working on hardscapes around the building. Supply chain issues are impacting scheduled delivery dates of electrical panels forcing the contractors to look at substitutions and construction sequencing. The team has also received the design for the required signal at the school entrance; this road related work will continue into the fall.
New Elementary School (Elon, Hawk Ridge, Polo Relief) (17)	\$ 51,856,961	New 45-classroom elementary school to relieve Elon, Hawk Ridge, Polo.	August 2023	Complete	1 %	The New Elementary School (Elon, Hawk Ridge, Polo Relief) construction phase change order was approved by the BOE and notice to proceed was issued to the construction manager. The construction manager mobilized on site and began surveying and site demolition.
New Elementary School (Hidden Valley, JW Grier, Newell) (17)	\$ 43,579,387	New 45-classroom elementary school; relieves overcrowding at Hidden Valley, J.W. Grier, Newell.	August 2023	Complete	0 %	The New Elementary School (Hidden Valley, JW Grier, Newell Relief) construction phase change order was approved by the BOE and notice to proceed was issued to the construction manager.

Monthly Project Status

2017 Bond Summary

March 2022

Project	Current Project Estimate	Project Scope	** Occupy On	Design Phase	Construction Progress	Project Status
New Elementary School (Windsor, Winterfield, Idlewild Relief) (17)	\$ 42,697,022	New 45-classroom elementary school to relieve Windsor, Winterfield, and Idlewild ES.	August 2023	Construction Documents	0 %	The New Elementary School (Windsor, Winterfield, Idlewild Relief) project continues to progress with LUESA and City Engineering permit approvals. The construction manager continues with their procurement phase of the remaining bid packages. The required CDOT improvements are in early design and CDOT has agreed the minor road improvements needed will not impact the release of the building permit.
New High School (South, Ardrey) (17)	\$ 160,930,460	New 100 classroom high school to relieve South Mecklenburg, Ardrey Kell and Myers Park HS.	August 2024	Complete	1 %	The New High School (South, Ardrey Relief) construction phase change order was approved by the BOE and notice to proceed was issued to the construction manager. The construction manager mobilized on site and began surveying and site demolition.
North Academy of World Languages	\$ 42,359,367	New 66 classroom K-8 Language Immersion facility located on the old J.M. Alexander Middle School site.	August 2021	Complete	99 %	The project closeout and final financial reconciliation process with the construction manager is underway.
Northwest School of the Arts (17)	\$ 20,467,000	Replace classroom building built in 1952 and build classroom addition that supports program.	August 2024	Not Started	0 %	Design to start in early 2022.
Palisades High School	\$ 108,908,793	New 100 classroom high school; relieves crowding at Olympic High School.	August 2022	Complete	94 %	The construction manager for the Palisades High School (fka New High School Olympic Relief) continued with finishes in the athletics, cafeteria and auditorium areas. The pool's surface was completed allowing the pool to be filled. Acoustical wall panels were installed in the gym, dance, auxiliary gym, music and choral rooms. Mechanical, electrical and plumbing trim-out continued throughout the building with cover plates and devices. The landscaper continued to install sod and plants throughout the campus. The architect began review the classroom buildings for compliance with the documents to generate the punch list.

Monthly Project Status

2017 Bond Summary

March 2022

Project	Current Project Estimate	Project Scope	** Occupy On	Design Phase	Construction Progress	Project Status
Shamrock Gardens Elementary School (17)	\$ 31,358,351	New 45-classroom replacement facility.	August 2022	Complete	87 %	The Shamrock Gardens Elementary School construction manager continued to push the project to completion. Ceiling tile installations continued along with flooring and casework throughout the classroom building. Final clean was performed in the administration, media center, music and arts spaces in preparation for review by the architect in early April. The bus lot was paved and striping will be performed in April.
Sharon Elementary School (17)	\$ 9,125,862	Add 16 classroom building and increase capacity of cafeteria.	August 2021	Complete	99 %	The project closeout and final financial reconciliation process with the construction manager is underway.
South Academy of International Languages (fka New K-8 School (South) (17)	\$ 41,209,367	New 71 classroom K-8 Language Immersion facility located on the old Nations Ford Elementary School site.	August 2021	Complete	100 %	The project closeout and final financial reconciliation process with the construction manager is underway.
South Mecklenburg High School (17)	\$ 15,622,927	Renovate/replace two classroom buildings built in 1958 to upgrade learning conditions.	January 2025	Not Started	0 %	Planning underway, design to start in 2022.
South Pine Academy	\$ 31,272,550	New 45-classroom elementary school to relieve Nations Ford, Sterling, and Steele Creek.	August 2021	Complete	100 %	The project closeout and final financial reconciliation process with the construction manager is underway.

Monthly Project Status

2017 Bond Summary

March 2022

Project	Current Project Estimate	Project Scope	** Occupy On	Design Phase	Construction Progress	Project Status
West Charlotte High School (17)	\$ 105,977,166	New 100 classroom school to replace current facility built in 1954.	August 2022	Complete	79 %	The trade contractors continue to work throughout the West Charlotte High School facility. Finishes throughout the facility are progressing well. The VCT has been installed throughout, and they are completing floors in the classroom wing corridors. Ceiling tiles have been installed in most areas as above ceiling inspections are being finalized and the finish coat of paint is being applied. Casework and shelving is also complete in most areas. The auditorium seats have been delivered and installation is underway. The ceramic tile lane markers at pool are complete and work on the pool deck is progressing. The site contractor continues to work on hardscapes around the building. The buffer wood privacy fence is installed and site landscaping is ongoing. The team is now working with administration to finalize transition plans from Phase 1 to Phase 2. The stadium improvements including the field house and concession stands are nearing completion. The new bus lot base layer of asphalt is in place.
West Mecklenburg High School (17)	\$ 10,450,902	Provide new gymnasium, the existing gymnasium will become the auxilliary.	August 2021	Complete	99 %	The project closeout and final financial reconciliation process with the construction manager is underway.

MONTHLY PROJECT PHOTOS

PROJECT PROGRESS PHOTOS



East Mecklenburg High School

PROJECT PROGRESS PHOTOS



East Mecklenburg High School

PROJECT PROGRESS PHOTOS



East Mecklenburg High School

PROJECT PROGRESS PHOTOS



Garinger High School

PROJECT PROGRESS PHOTOS



Garinger High School

PROJECT PROGRESS PHOTOS



Garinger High School

PROJECT PROGRESS PHOTOS



Lansdowne Elementary School

PROJECT PROGRESS PHOTOS



Lansdowne Elementary School

PROJECT PROGRESS PHOTOS



Lansdowne Elementary School

PROJECT PROGRESS PHOTOS



Lansdowne Elementary School

PROJECT PROGRESS PHOTOS



New ES (Bain, Lebanon, Piney Grove Relief)

PROJECT PROGRESS PHOTOS



New ES (Bain, Lebanon, Piney Grove Relief)

PROJECT PROGRESS PHOTOS



New ES (Bain, Lebanon, Piney Grove Relief)

PROJECT PROGRESS PHOTOS



New ES (Bain, Lebanon, Piney Grove Relief)

PROJECT PROGRESS PHOTOS



Palisades High School

PROJECT PROGRESS PHOTOS



Palisades High School

PROJECT PROGRESS PHOTOS



Palisades High School

PROJECT PROGRESS PHOTOS



Palisades High School

PROJECT PROGRESS PHOTOS



Shamrock Gardens Elementary School

PROJECT PROGRESS PHOTOS



Shamrock Gardens Elementary School

PROJECT PROGRESS PHOTOS



Shamrock Gardens Elementary School



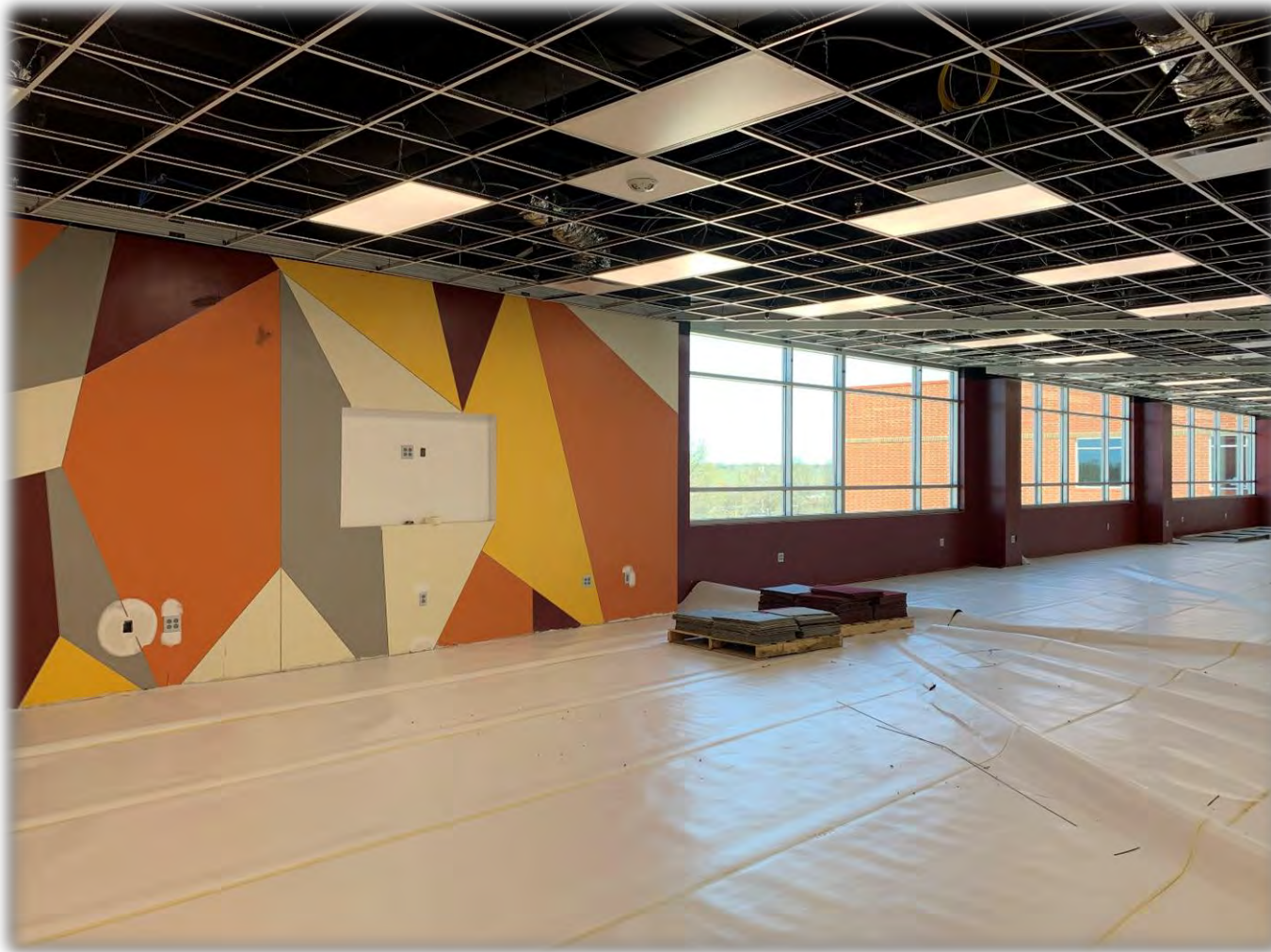
Shamrock Gardens Elementary School

PROJECT PROGRESS PHOTOS



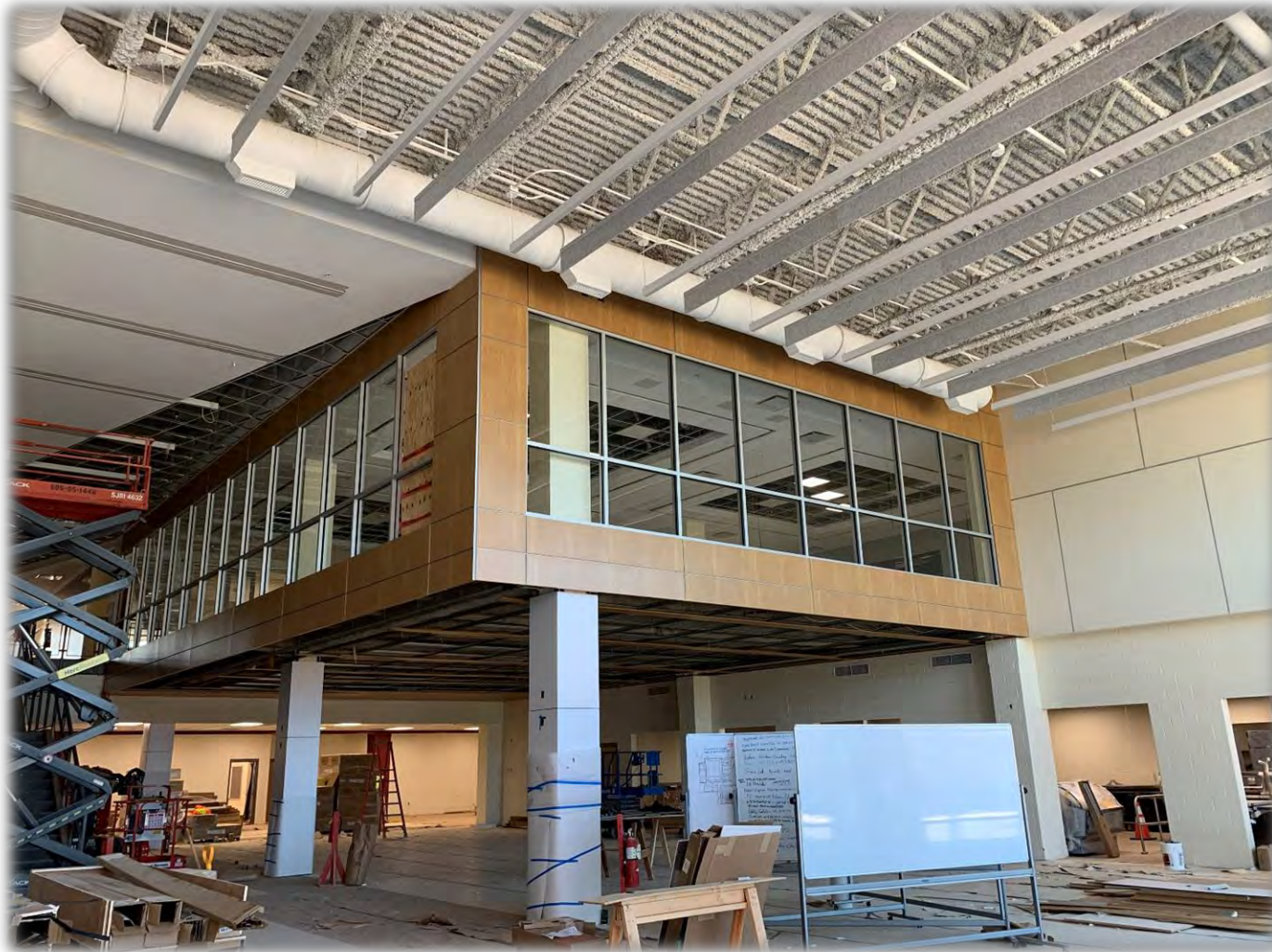
West Charlotte High School Replacement

PROJECT PROGRESS PHOTOS



West Charlotte High School Replacement

PROJECT PROGRESS PHOTOS



West Charlotte High School Replacement

PROJECT PROGRESS PHOTOS



West Charlotte High School Replacement



West Charlotte High School Replacement

MWSBE PARTICIPATION REPORT

Contract Status Report - MWSBE Participation Commitments

Report Date 4/5/2022

Charlotte-Mecklenburg Schools

4/5/2022 12:22:22 PM

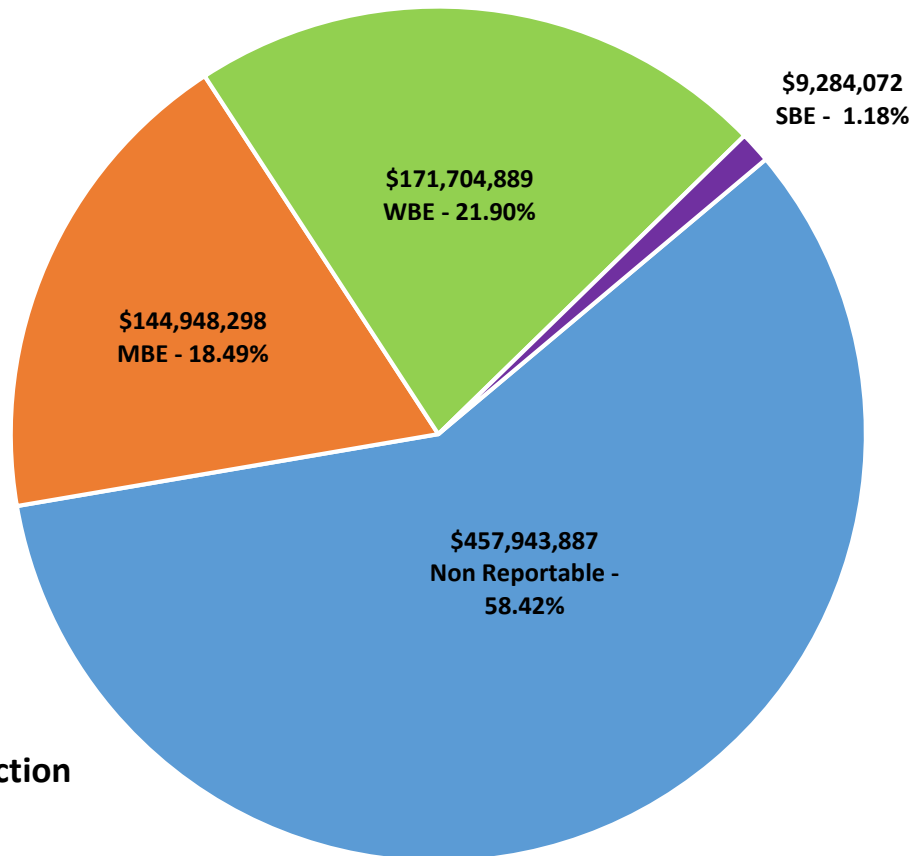
2017 Bond Projects

March 2022 Monthly Bond Report

Facility	Contract Amount	African American MBE\$	%	Other MBE \$	%	Total MBE \$	%	Other WBE \$	%	Other SBE \$	%	Total	%
<u>Briarwood Elementary School (17)</u>	\$28,723,186	\$4,026,343	14.02%	\$2,424,277	8.44%	\$6,450,620	22.46%	\$2,039,792	7.10%	\$152,902	0.53%	\$8,643,314	30.09%
<u>Career and Technology Education (1</u>	\$5,922,484	\$525,859	8.88%	\$292,652	4.94%	\$818,511	13.82%	\$200,372	3.38%	\$63,430	1.07%	\$1,082,313	18.27%
<u>Charlotte-Mecklenburg Academy (17</u>	\$17,035,852	\$198,536	1.17%	\$1,029,192	6.04%	\$1,227,728	7.21%	\$872,755	5.12%	\$13,200	0.08%	\$2,113,683	12.41%
<u>Collinswood Language Academy (17)</u>	\$38,527,740	\$649,287	1.69%	\$1,613,103	4.19%	\$2,262,390	5.87%	\$11,362,566	29.49%	\$9,328	0.02%	\$13,634,284	35.39%
<u>E.E. Waddell (17)</u>	\$1,967,137	\$0	0.00%	\$0	0.00%	\$0	0.00%	\$10,950	0.56%	\$0	0.00%	\$10,950	0.56%
<u>East Mecklenburg High School (17)</u>	\$12,620,163	\$603,811	4.78%	\$532,460	4.22%	\$1,136,271	9.00%	\$490,382	3.89%	\$681,075	5.40%	\$2,307,728	18.29%
<u>Garinger High School (17)</u>	\$4,240,502	\$77,048	1.82%	\$412,572	9.73%	\$489,620	11.55%	\$165,433	3.90%	\$0	0.00%	\$655,054	15.45%
<u>Harding High School (17)</u>	\$13,015,986	\$1,504,505	11.56%	\$310,356	2.38%	\$1,814,862	13.94%	\$3,846,831	29.55%	\$176	0.00%	\$5,661,869	43.50%
<u>JT Williams (17)</u>	\$1,541,481	\$2,000	0.13%	\$20,000	1.30%	\$22,000	1.43%	\$0	0.00%	\$51,800	3.36%	\$73,800	4.79%
<u>Lansdowne Elementary School (17)</u>	\$30,675,668	\$2,187,869	7.13%	\$468,305	1.53%	\$2,656,174	8.66%	\$2,455,181	8.00%	\$223,625	0.73%	\$5,334,980	17.39%
<u>Lincoln Heights Elementary School (1</u>	\$454,706	\$92,274	20.29%	\$18,800	4.13%	\$111,074	24.43%	\$0	0.00%	\$74,503	16.38%	\$185,577	40.81%
<u>Montclair Elementary School (17)</u>	\$26,093,784	\$3,617,952	13.87%	\$2,260,381	8.66%	\$5,878,333	22.53%	\$5,729,641	21.96%	\$518,632	1.99%	\$12,126,605	46.47%
<u>Mountain Island Lake Academy (17)</u>	\$2,355,040	\$0	0.00%	\$36,650	1.56%	\$36,650	1.56%	\$19,550	0.83%	\$0	0.00%	\$56,200	2.39%
<u>New Elementary School (Bain, Leban</u>	\$26,312,490	\$4,678,087	17.78%	\$18,841,591	71.61%	\$23,519,678	89.39%	\$1,225,043	4.66%	\$308,680	1.17%	\$25,053,401	95.21%
<u>New Elementary School (Elon, Hawk</u>	\$37,283,259	\$5,569,267	14.94%	\$2,386,480	6.40%	\$7,955,747	21.34%	\$7,959,904	21.35%	\$145,500	0.39%	\$16,061,151	43.08%
<u>New Elementary School (Hidden Vall</u>	\$38,642,060	\$5,493,635	14.22%	\$4,211,754	10.90%	\$9,705,389	25.12%	\$2,237,544	5.79%	\$25,600	0.07%	\$11,968,533	30.97%
<u>New Elementary School (Windsor, W</u>	\$9,808,734	\$1,456,670	14.85%	\$258,000	2.63%	\$1,714,670	17.48%	\$358,675	3.66%	\$0	0.00%	\$2,073,345	21.14%
<u>New High School (South, Ardrey) (17</u>	\$147,294,298	\$1,831,976	1.24%	\$3,364,022	2.28%	\$5,195,998	3.53%	\$7,148,311	4.85%	\$3,913,152	2.66%	\$16,257,461	11.04%
<u>North Academy of World Languages</u>	\$38,090,783	\$1,688,775	4.43%	\$1,575,863	4.14%	\$3,264,638	8.57%	\$3,471,693	9.11%	\$437,418	1.15%	\$7,173,748	18.83%
<u>Northwest School of the Arts (17)</u>	\$227,480	\$0	0.00%	\$0	0.00%	\$0	0.00%	\$0	0.00%	\$0	0.00%	\$0	0.00%
<u>Palisades High School</u>	\$98,187,777	\$13,345,487	13.59%	\$5,874,324	5.98%	\$19,219,811	19.57%	\$8,458,793	8.61%	\$766,550	0.78%	\$28,445,154	28.97%
<u>Shamrock Gardens Elementary Scho</u>	\$28,032,340	\$2,162,828	7.72%	\$1,468,953	5.24%	\$3,631,781	12.96%	\$22,895,608	81.68%	\$275,594	0.98%	\$26,802,983	95.61%
<u>Sharon Elementary School (17)</u>	\$8,525,796	\$326,844	3.83%	\$283,497	3.33%	\$610,341	7.16%	\$926,873	10.87%	\$217,984	2.56%	\$1,755,197	20.59%
<u>South Academy of International Lan</u>	\$37,082,033	\$6,023,141	16.24%	\$2,431,071	6.56%	\$8,454,212	22.80%	\$10,755,611	29.00%	\$347,799	0.94%	\$19,557,622	52.74%

Facility	Contract Amount	African American MBE\$	%	Other MBE \$	%	Total MBE \$	%	Other WBE \$	%	Other SBE \$	%	Total	%
<u>South Mecklenburg High School (17)</u>	\$115,472	\$0	0.00%	\$0	0.00%	\$0	0.00%	\$0	0.00%	\$0	0.00%	\$0	0.00%
<u>South Pine Academy</u>	\$26,205,173	\$916,165	3.50%	\$19,205,893	73.29%	\$20,122,058	76.79%	\$4,342,256	16.57%	\$237,754	0.91%	\$24,702,068	94.26%
<u>West Charlotte High School (17)</u>	\$95,090,332	\$15,223,007	16.01%	\$2,633,525	2.77%	\$17,856,531	18.78%	\$72,667,374	76.42%	\$535,596	0.56%	\$91,059,501	95.76%
<u>West Mecklenburg High School (17)</u>	\$9,809,391	\$283,809	2.89%	\$509,403	5.19%	\$793,212	8.09%	\$2,063,752	21.04%	\$283,775	2.89%	\$3,140,739	32.02%
Grandtotal	\$783,881,147	\$72,485,174	9.25%	\$72,463,124	9.24%	\$144,948,298	18.49%	\$171,704,889	21.90%	\$9,284,072	1.18%	\$325,937,260	41.58%

MWSBE Participation 2017 Bond Projects



**Design and Construction
Contract Total
\$783,881,147**

PROJECT CONTROLS

CHARLOTTE-MECKLENBURG BOARD OF EDUCATION
2013 BOND SERIES-CAPITAL IMPROVEMENT PROGRAM
BUDGET STATUS REPORT

	Original Project Budget	Current Project Budget	Committed Amount	Approved Change Orders	Total Committed	Pending Commitments	To Be Committed	Prev Paid To Date	Paid To Date	Balance To Complete	Monthly Expenditure
	(A)	(B)	(C)	(D)	(E)=C+D	(F)	(G)=(B-E-F)	(H)	(I)	(J)=(B-I)	(K)=(I-H)
<u>A. REPLACEMENT & RENOVATIONS</u>											
1 Career & Technology Education Institutes Phase 1:	\$8,640,000	\$18,697,857	\$6,963,309	\$11,734,547	\$18,697,857	\$0	\$1	\$11,105,514	\$13,028,085	\$5,669,771	\$1,922,571
2 Davidson K-8 Conversion	\$9,500,000	\$13,461,149	\$2,131,151	\$11,329,998	\$13,461,149	\$0	\$0	\$13,461,149	\$13,461,149	\$0	\$0
3 J.M. Alexander Middle Replacement	\$30,672,000	\$29,845,539	\$4,502,518	\$25,343,021	\$29,845,539	\$0	\$0	\$29,845,539	\$29,845,539	\$0	\$0
4 Nations Ford Elementary Replacement	\$19,440,000	\$19,231,604	\$3,958,871	\$15,272,733	\$19,231,604	\$0	\$0	\$19,231,604	\$19,231,604	\$0	\$0
5 Northwest School of the Arts	\$12,420,000	\$12,868,718	\$2,047,917	\$10,820,801	\$12,868,718	\$0	\$0	\$12,868,719	\$12,868,719	\$0	\$0
6 Oakhurst STEAM Magnet Elementary/Starmount	\$5,940,000	\$5,407,812	\$3,471,397	\$1,936,415	\$5,407,812	\$0	\$0	\$5,407,812	\$5,407,812	\$0	\$0
7 Pre-K-8 Conversions Phase II: Ashley Park/ Bruns	\$24,732,000	\$19,700,807	\$4,167,671	\$15,533,138	\$19,700,809	\$0	\$0	\$19,700,807	\$19,700,807	\$0	\$0
8 Selwyn Elementary	\$2,592,000	\$4,624,831	\$744,799	\$3,880,032	\$4,624,831	\$0	\$0	\$4,624,831	\$4,624,831	\$0	\$0
9 Statesville Road Elementary	\$20,340,000	\$20,648,509	\$5,081,473	\$15,567,037	\$20,648,509	\$0	\$0	\$20,648,509	\$20,648,509	\$0	\$0
10 West Mecklenburg HS	\$0	\$3,993,543	\$3,993,543	\$0	\$3,993,543	\$0	\$0	\$0	\$3,993,543	\$0	\$3,993,543
Total Replacement & Renovations	\$134,276,000	\$148,480,367	\$37,062,648	\$111,417,722	\$148,480,370	\$0	\$2	\$136,894,484	\$142,810,597	\$5,669,769	\$5,916,114
<u>B. RESPONSE TO ENROLLMENT GROWTH</u>											
1 East Mecklenburg High Addition	\$12,744,000	\$12,083,804	\$4,465,200	\$7,618,603	\$12,083,803	\$0	\$0	\$10,988,287	\$12,083,803	\$0	\$1,095,516
2 Myers Park High Addition	\$22,248,000	\$11,040,942	\$1,207,493	\$9,833,448	\$11,040,942	\$0	\$0	\$11,040,941	\$11,040,941	\$0	\$0
3 Northridge Middle Addition	\$6,448,000	\$6,366,170	\$2,114,306	\$4,251,865	\$6,366,171	\$0	\$0	\$6,366,171	\$6,366,171	\$0	\$0
4 Olympic High Addition/Renovation	\$8,964,000	\$8,947,310	\$2,002,694	\$6,944,615	\$8,947,310	\$0	\$0	\$8,947,310	\$8,947,310	\$0	\$0
5 South Mecklenburg High Addition	\$18,360,000	\$16,307,355	\$2,922,282	\$13,385,073	\$16,307,355	\$0	\$0	\$16,307,355	\$16,307,355	\$0	\$0
6 Charlotte East Language Academy (FKA -New Lang	\$30,376,000	\$31,387,929	\$5,740,182	\$25,647,747	\$31,387,929	\$0	\$0	\$31,387,929	\$31,387,929	\$0	\$0
7 Rea Farms STEAM Academy	\$31,376,000	\$40,476,000	\$9,062,022	\$30,187,065	\$39,249,087	(\$5,460)	\$1,232,373	\$38,887,537	\$38,889,267	\$1,586,733	\$1,730
8 Renaissance West STEAM Academy (FKA New Pre-	\$30,376,000	\$31,698,952	\$5,667,388	\$26,031,564	\$31,698,952	\$0	\$0	\$31,698,952	\$31,698,952	\$0	\$0
9 New High School - South Meck/Ardrey Kell Relief *	\$0	\$9,278,699	\$9,278,699	\$0	\$9,278,699	\$0	\$0	\$0	\$9,278,699	\$0	\$9,278,699
Total Response to Enrollment Growth	\$160,892,000	\$167,587,161	\$42,460,267	\$123,899,981	\$166,360,248	(\$5,460)	\$1,232,373	\$155,624,482	\$166,000,427	\$1,586,734	\$10,375,945
<u>C. CONTINGENCY</u>											
	\$0	\$0	\$0	\$0	\$0	\$0	\$0	\$0	\$0	\$0	\$0
Total Contingency	\$0	\$0	\$0	\$0	\$0	\$0	\$0	\$0	\$0	\$0	\$0
TOTAL LOCAL BOND PROGRAM	\$295,168,000	\$316,067,527	\$79,522,915	\$235,317,703	\$314,840,618	(\$5,460)	\$1,232,375	\$292,518,965	\$308,811,024	\$7,256,503	\$16,292,059

Original project estimated costs approved by the Board Of Education on July 23, 2013 and approved by the voters of Mecklenburg County on November 5, 2013.

Note: Mecklenburg County's appropriated interest from COPS to increase funding for the 2013 Bond Program.

CHARLOTTE-MECKLENBURG BOARD OF EDUCATION
2017 BOND SERIES-CAPITAL IMPROVEMENT PROGRAM
BUDGET STATUS REPORT

	Original Project Budget	Current Project Budget	Committed Amount	Approved Change Orders	Total Committed	Pending Commitments	To Be Committed	Prev Paid To Date	Paid To Date	Balance To Complete	Monthly Expenditure
	(A)	(B)	(C)	(D)	(E)=C+D	(F)	(G)=(B-E-F)	(H)	(I)	(J)=(B-I)	(K)=(I-H)
A. REPLACEMENT & RENOVATIONS											
1 Briarwood Elementary *	\$29,091,619	\$31,762,730	\$4,766,862	\$26,609,642	\$31,376,504	\$0	\$386,226	\$29,382,039	\$30,150,145	\$1,612,585	\$768,106
2 Bruns Academy Replacement	\$34,207,808	\$39,784,927	\$3,723,637	\$218,050	\$3,941,687	\$0	\$35,843,241	\$0	\$94,900	\$39,690,027	\$94,900
3 Career & Technology Education Upgrades	\$10,101,734	\$10,159,765	\$2,289,839	\$4,099,152	\$6,388,991	\$77,334	\$3,693,440	\$4,694,053	\$5,118,580	\$5,041,185	\$424,527
4 Collinswood K-8 *	\$44,172,540	\$41,422,560	\$4,927,491	\$36,495,069	\$41,422,560	\$0	\$0	\$41,384,602	\$41,392,349	\$30,211	\$7,747
5 East Mecklenburg HS	\$12,771,594	\$13,858,594	\$790,239	\$11,845,900	\$12,636,139	\$39,557	\$1,182,898	\$8,570,986	\$6,562,108	\$7,296,486	(\$2,008,877)
6 Garinger HS	\$13,936,979	\$5,986,979	\$1,632,813	\$3,475,359	\$5,108,172	\$0	\$878,807	\$2,017,829	\$2,178,450	\$3,808,529	\$160,621
7 Harding University High *	\$18,330,263	\$13,747,878	\$2,045,267	\$11,702,610	\$13,747,877	\$0	\$0	\$13,747,877	\$13,747,877	\$0	\$0
8 Charlotte-Mecklenburg Academy (FKA -EC Specialty	\$18,957,960	\$17,699,220	\$2,175,504	\$15,523,717	\$17,699,220	\$0	\$0	\$17,699,220	\$17,699,220	\$0	\$0
9 Lansdowne Elementary	\$29,391,270	\$34,078,834	\$4,150,639	\$29,467,186	\$33,617,825	\$72,384	\$388,625	\$21,171,715	\$22,389,915	\$11,688,919	\$1,218,199
10 Lincoln Heights Elementary	\$3,740,478	\$4,588,675	\$577,649	\$49,054	\$626,703	\$0	\$3,961,972	\$383,738	\$383,738	\$4,204,937	\$0
11 Montclair Elementary Replacement *	\$28,559,390	\$28,559,390	\$2,426,761	\$25,948,952	\$28,375,714	\$0	\$183,676	\$28,168,226	\$28,188,096	\$371,295	\$19,870
12 Mountain Island k-8	\$9,218,439	\$10,488,400	\$1,406,820	\$1,390,020	\$2,796,840	\$0	\$7,691,560	\$463,701	\$472,163	\$10,016,237	\$8,462
13 Northwest School of the Arts	\$17,632,202	\$20,467,000	\$959,216	\$117,644	\$1,076,860	\$0	\$19,390,140	\$0	\$10,570	\$20,456,430	\$10,570
14 Shamrock Gardens Elementary *	\$29,890,351	\$31,358,351	\$3,739,561	\$27,153,983	\$30,893,544	\$0	\$464,807	\$18,904,840	\$21,858,644	\$9,499,707	\$2,953,804
15 Sharon Elementary	\$7,706,528	\$9,125,862	\$1,443,456	\$7,666,984	\$9,110,441	\$0	\$15,421	\$8,994,962	\$9,047,784	\$78,078	\$52,821
16 South Mecklenburg HS	\$13,352,143	\$15,622,927	\$1,653,335	\$94,238	\$1,747,573	\$0	\$13,875,354	\$2,834	\$2,834	\$15,620,093	\$0
17 E.E. Waddell Magnet HS	\$4,571,709	\$5,137,367	\$2,156,863	\$0	\$2,156,863	\$0	\$2,980,504	\$99,717	\$106,814	\$5,030,553	\$7,097
18 West Charlotte HS Replacement	\$109,977,166	\$105,977,166	\$12,252,697	\$91,448,524	\$103,701,221	\$144,450	\$2,131,495	\$71,849,492	\$74,453,030	\$31,524,136	\$2,603,537
19 West Mecklenburg HS	\$11,065,440	\$10,450,902	(\$2,367,345)	\$8,670,708	\$6,303,362	\$0	\$4,147,540	\$10,111,828	\$6,256,000	\$4,194,902	(\$3,855,827)
20 John Taylor Williams	\$13,964,339	\$15,732,600	\$2,199,339	\$21,670	\$2,221,009	\$0	\$13,511,591	\$511,696	\$526,276	\$15,206,324	\$14,580
Total Replacement & Renovations	\$460,639,952	\$466,010,127	\$52,950,643	\$301,998,462	\$354,949,104	\$333,725	\$110,727,298	\$278,159,355	\$280,639,492	\$185,370,635	\$2,480,137
B. RESPONSE TO ENROLLMENT GROWTH											
1 South Academy of International Languages	\$45,359,367	\$41,209,367	\$6,046,436	\$35,050,079	\$41,096,515	\$0	\$112,852	\$40,463,885	\$40,552,130	\$657,237	\$88,245
2 North Academy of World Languages (FKA - New K-8	\$45,359,367	\$42,359,367	\$6,022,055	\$35,999,788	\$42,021,844	\$0	\$337,523	\$41,545,224	\$41,594,143	\$765,224	\$48,919
3 South Pine Academy (FKA - New ES Nations Ford, S	\$29,173,829	\$31,272,550	\$6,811,146	\$24,215,688	\$31,026,834	\$0	\$245,716	\$30,074,973	\$30,354,411	\$918,139	\$279,438
4 New Elementary School - Bain/Lebanon Relief	\$29,988,332	\$30,455,951	\$3,558,600	\$26,554,941	\$30,113,541	\$51,786	\$290,624	\$15,322,425	\$16,923,302	\$13,532,649	\$1,600,877
5 New Elementary School - Windsor Park Relief *	\$30,422,230	\$42,697,022	\$5,831,789	\$5,449,264	\$11,281,053	\$0	\$31,415,969	\$2,653,523	\$3,458,854	\$39,238,168	\$805,331
6 New Elementary School - Elon/Hawk Ridge Relief *	\$30,426,712	\$51,856,962	\$14,211,007	\$35,170,706	\$49,381,713	\$0	\$2,475,249	\$11,967,463	\$11,972,239	\$39,884,723	\$4,776
7 New Elementary School - Hidden Valley Relief	\$30,518,345	\$43,579,387	\$4,439,505	\$36,548,935	\$40,988,440	\$0	\$2,590,947	\$2,264,407	\$2,409,549	\$41,169,839	\$145,142
8 Palisades High School	\$109,908,793	\$108,908,793	\$11,306,475	\$97,051,295	\$108,357,770	(\$6,038)	\$557,061	\$82,584,777	\$85,485,158	\$23,423,635	\$2,900,381
9 New High School - South Meck/Ardrey Kell Relief *	\$110,287,621	\$160,930,460	\$12,429,648	\$125,624,701	\$138,054,349	\$69,350	\$22,806,761	\$4,739,869	\$5,626,791	\$155,303,669	\$886,922
Total Response to Enrollment Growth	\$461,444,596	\$553,269,858	\$70,656,660	\$421,665,399	\$492,322,059	\$115,098	\$60,832,702	\$231,616,547	\$238,376,577	\$314,893,281	\$6,760,030
C. CONTINGENCY											
	\$0	\$0	\$0	\$0	\$0	\$0	\$0	\$0	\$0	\$0	\$0
Total Contingency	\$0	\$0	\$0	\$0	\$0	\$0	\$0	\$0	\$0	\$0	\$0

CHARLOTTE-MECKLENBURG BOARD OF EDUCATION
2017 BOND SERIES-CAPITAL IMPROVEMENT PROGRAM
BUDGET STATUS REPORT

	Original Project Budget	Current Project Budget	Committed Amount	Approved Change Orders	Total Committed	Pending Commitments	To Be Committed	Prev Paid To Date	Paid To Date	Balance To Complete	Monthly Expenditure
	(A)	(B)	(C)	(D)	(E)=C+D	(F)	(G)=(B-E-F)	(H)	(I)	(J)=(B-I)	(K)=(I-H)
TOTAL LOCAL BOND PROGRAM	\$922,084,548	\$1,019,279,985	\$123,607,303	\$723,663,860	\$847,271,163	\$448,823	\$171,560,000	\$509,775,902	\$519,016,069	\$500,263,916	\$9,240,167

Original project estimated costs approved by the Board Of Education on July 25, 2017 approved by the voters of Mecklenburg County on November 7, 2017.

*Project included in \$33.2M early funding approved by Board Of Education on August 9, 2016 and Mecklenburg Board of County Commissioners on September 6, 2016. On February 19, 2019 an additional \$8M was approved for New Elementary School - Elon/Hawk Ridge Relief site.

*Current Budget includes an additional \$89.2M to fund increase land and construction costs. The additional funds were approved by the Board of County Commissioners on June 16, 2020.

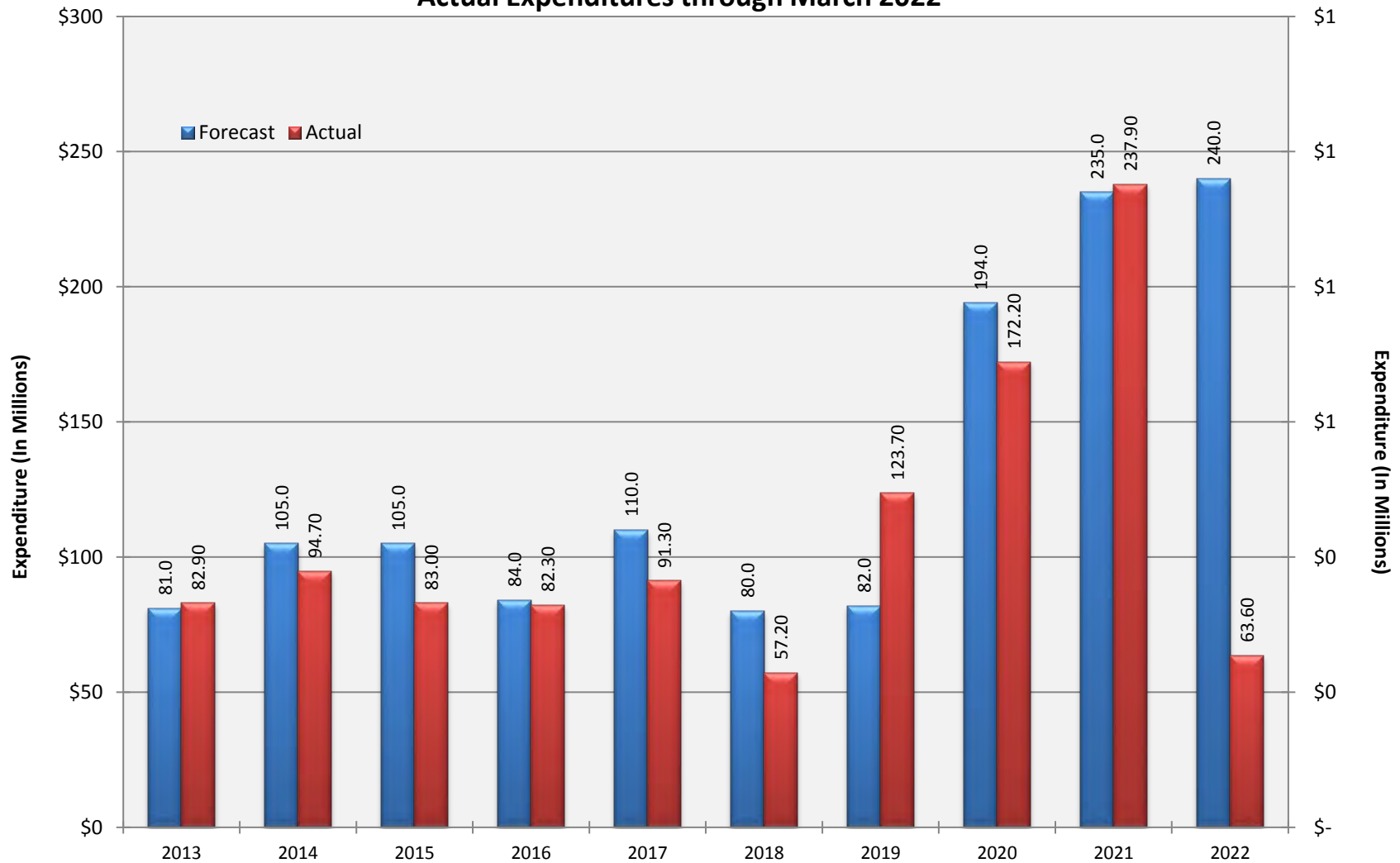
Charlotte-Mecklenburg Board of Education
Approved Construction or Repair Change Orders*
Reporting Period: March 2022

Funding Source	Project Name	Contractor	Description	Change Order Amount	Revised Contract Value
2017 Bond	West Mecklenburg High School (17)	Barnhill/D.A. Everett, a Joint Venture	Final Contract CO / Allowance Reconciliation Closeout	(\$118,073.99)	\$8,778,928.01
2017 Bond	South Pine Academy	MetCon, Inc.	Final Contract CO / Allowance Reconciliation Closeout	(\$210,192.82)	\$24,363,528.18
2017 Bond	Sharon Elementary School (17)	Samet Corporation	Add Sidewalks Across Fire Access Road; Pavement Improvements Along Edge of Existing Track; Improve Drainage at Playground	\$17,249.28	\$7,827,317.30

* Not previously presented to the Board of Education for Approval (less than \$90,000)

10 YEAR EXPENDITURE SUMMARY

Forecast Expenditure versus
Actual Expenditures through March 2022



GLOSSARY

Glossary

- **Project Management** – This section includes updates from our project managers and describes the currently active construction projects. This includes from Board of Education award thru final completion.
- **Design and Bidding** – This section contains updates from our design managers on the projects currently in the design phase. This phase from design award to Board of Education award of construction.
- **Controls** – Section includes misc. updates from controls group including expenditures, related Board of Education awards during the reporting period, cash flow information. This section covers all projects from approved bond through final expenditures and bond close with the county.
- **MWSBE** – Contains updates from the MWSBE Director and team, including current activity and summaries of the participation by MWSBE providers on our program.
- **Bond Progress Summary** – Provides a summary of bond financials including bond value, committed/pending amounts, paid to date, expended this month.
- **Project Procurement Dates** - Next 90 Days major project bid activity.
- **Mobile Swing Space Utilization** – Includes a summary of program related swing space currently in use and the schedule of use.
- **Bond Summary Schedule** – Current program summary schedule including planned design, construction and FF&E. These activities are fed from detailed schedules and are fine-tuned as project information is available.
- **Project Contractor Teams**; Provides summary of turnover dates for completed/closed projects since 2010 including architects/designers and contractors.
- **School Site Location Maps** – General location of bond projects (2017) by type.
- **Project Status Report** – This section of the report provides a summary of the bond project scope, current estimate (all sources), planned occupancy/actual occupancy date. It also provides a current status of the design phase, construction progress and a brief update. The report currently includes 2013 and 2017 bond projects that have or will be completed after to August 2016.
- **MWSBE Participation Report** – The MWSBE report provides a summary of the participation on the 2013 & 2017 Bond funded projects.
- **Project Progress Photos** – Includes photos of active construction projects.
- **Budget Summary Reports** – These reports are by funding source and summarize financial activity to date on the projects. This includes original and current project estimates, committed values, amounts paid to date, balances and monthly expenditures.
- **Change Orders < \$90,000** – This month's approved construction or repair change orders < \$90,000.
- **Expenditure Summary** – Provides a summary of Bond Expenditures by calendar year.