

Capital Improvement Program

Monthly Bond Report
February 2022



New Elementary School Bain, Lebanon, Piney Grove Relief



CAPITAL PROGRAM SERVICES Capital Improvement Program

FEBRUARY 2022 MONTHLY BOND REPORT

PROGRAM OVERVIEW

- Project Management
- Design and Bidding
- Controls
- MWSBE
- Bond Progress Summary
- Project Procurement - Next 90 Days
- Swing Space Utilization
- Bond Summary Schedule
- Project Contractor Teams; Projects in Design/Construction and Substantially Completed/Closed
- School Site Location Maps
 - Elementary Schools
 - Middle Schools
 - High Schools & Specialty Schools

PROJECT STATUS REPORT

MWSBE PARTICIPATION REPORT

PROJECT PROGRESS PHOTOS

PROJECT CONTROLS

- Budget Summary Reports
 - 2013 Bond Series
 - 2017 Bond Series
- Change Orders < \$90,000
- Expenditure Summary

GLOSSARY

PROGRAM OVERVIEW

PROJECT MANAGEMENT

The following is a summary of the activity on the bond funded projects in construction during the month of February.

The construction manager for **Briarwood Elementary Replacement School** turned over the remaining parking lots and completed the phase two construction activities. The construction manager is working through the punch list and final closeout.

The construction manager for **East Mecklenburg High School** has achieved building dry-in. The roof coping is being installed at the parapet wall. The window frames and glass have been installed at the classroom elevations and hard tile has started at the bathrooms. The mechanical contractor is working towards temporary conditioned air using the permanent system. The classroom wing finishes are progressing from the 1st floor up to the 3rd. The new classroom wing is scheduled for occupancy in August 2022.

The **Garinger Addition and Renovation** construction manager continued with interior and exterior activities. The exterior masonry veneer was completed and the mason is demobilizing. The exterior metal panels are being installed along with the final window frames and glass. The MEP trades are finalizing the install of work above ceilings on the first floor and continuing with installs on the second floor. The painter has installed the prime and first coat of paint on the first floor along with priming the second. The mechanical contractor continues with installations in the main mechanical room in preparation to start the units in March. The addition is scheduled to be occupied August 2022 and the renovations to start summer of 2022 and be occupied January 2023.

The **Lansdowne Elementary School** construction manager has completed the brick veneer. The window frames, glass and drywall finishing activities are progressing. The MEP trade partners are continuing final rough-in for finishes to begin. The ceiling grid for lay-in ceilings is being installed throughout. The site contractor is also working on storm water piping and drains allowing final grades to be established. Occupancy of the replacement school is scheduled for August 2022. Upon completion of the new building demolition and remaining site work will commence and be completed in 2023.

The **New Elementary School (Bain, Lebanon, Piney Grove Relief)** construction manager has completed the brick veneer. The window frames have started at the classroom wing. The temporary heat is running to allow the dry wall finish to progress. The MEP trade partners are working on above ceiling rough in. The site contractor is working on erosion control and also has some areas on finish grade. Supply chain issues are impacting scheduled delivery dates of electrical main panels and switch gear forcing the contractors to look at substitutions and construction sequencing. The team has also received a preliminary design to review for the required signal at the school entrance. This new 45-classroom school will be located next to the existing Mint Hill Middle School. The project is scheduled for occupancy in August 2022.

The construction manager for the **Palisades High School** (*fka New High School Olympic Relief*) continued with finishes throughout the building including ceiling tile, final paint, flooring, doors, hardware, toilet partitions, MEP trim out, marker/tack boards, etc. The exterior improvements continue around the building and athletic fields with sidewalks, drives, and landscaping being installed. The 100-classroom relief high school is scheduled to be occupied in August 2022.

The **Shamrock Gardens Elementary School** construction manager focused on the three-story classroom wing completing the overhead MEP on all levels to all ceiling grid installations. Casework and flooring started on the first floor working their way up to the third. MEP trim out was completed in the administration wing along with final paint. Kitchen equipment started to arrive for final hookup in March. The bus lot was final graded, and layout of curb was installed for placement in March. The new 45-classroom replacement elementary school is scheduled to be occupied August 2022.

The trade contractors continue to work throughout the **West Charlotte High School** facility. The finishes throughout the facility are progressing well. Most floor finishes are now complete and the hard tile at bathrooms is nearing completion. The overhead inspections are going well allowing most of the ceiling tiles to be dropped at lay-in areas. Accent paint and athletic striping at the gymnasium is complete. Casework is nearing completion with countertops progressing. The site contractor continues to pour sidewalks allowing finish grades to be established. The team is now working with administration to finalize transition plans from Phase 1 to Phase 2. The stadium improvements including the field house and concession stands are nearing completion. The new bus lot base layer of asphalt is in place. The project is scheduled to be occupied August 2022. Once the new school is occupied the existing school will be demolished and final site work will take place with final project completion in August 2023.

DESIGN AND BIDDING

The following is a summary of the activity on the bond funded projects in design and bidding phase during the month of February.

The **E.E. Waddell High School** project has achieved building permit approval. The project's bid activities have concluded and an apparent low bidder has been identified. Recommendation to award the project will be discussed at the second board meeting in March. The project consists of light renovations to the existing science classrooms, maker space, lobby, HVAC work, limited VCT and acoustical ceilings. This project will start construction in late spring 2022.

The **JT Williams Secondary Montessori** project continues to progress in the construction document phase. The project is scheduled to submit for its building permit in early March. The project's base scope focuses on required civil improvements, architectural and MEP renovations in the 100 and 200 buildings. The renovations to the remaining campus buildings mechanical and classroom lighting systems are being designed and will be bid as alternates. A 10-classroom modular will be used for swing and future space at the school site. Phasing plans to execute the project have been coordinated with the principal. Project construction is scheduled to start June 2022 and be completed August 2024.

The **Mountain Island Lake Academy** review of construction documents is complete and comments returned to the architect for incorporation into the design. The early steel and roof procurement package bids have reviewed for approval by the BOE in early March. LUESA and City Engineering permit approvals continue to progress with their reviews. The remaining scopes of work are scheduled for bid and award for late May. The project consists of a building addition containing a middle school gymnasium and visual and performing arts classrooms. Construction is scheduled to start in the spring 2022 and the project is scheduled to be completed August 2023.

The **New Bruns Avenue Elementary (Replacement)** pre-design submittal has been received and comments returned to the architect. The project has progressed to the schematic design phase. CMS due diligence activities continue to progress. This new 45-classroom school facility is scheduled for occupancy August 2024.

The **New Elementary School (Elon, Hawk Ridge, Polo Relief)** project continues its review for building permit approval with LUESA. The rezoning application for the project has been approved. The construction manager has received bids and is preparing for the construction award at the March 23, 2022 board meeting. Construction is scheduled to start after the award and occupancy is scheduled August 2023. This new 45-classroom school will be located across from Ardrey Kell High School.

The **New Elementary School (Hidden Valley, JW Grier, Newell Relief)** project continues its review for building permit approval with LUESA. The construction manager has received bids and is preparing for the construction

award at the March 23, 2022 board meeting. Construction is scheduled to start after the award. This new 45-classroom school will be located next to Northridge Middle School and is scheduled for occupancy August 2023.

The **New Elementary School (Windsor, Winterfield, Idlewild Relief)** project has been submitted to LUESA for building permit approval and CDOT has completed their review and the required modifications are being addressed. The construction manager has begun their procurement phase of the remaining bid packages which are scheduled for bid in late spring. This new 45-classroom school facility is scheduled for occupancy August 2023.

The **New High School (South, Ardrey Kell Relief)** project continues its review for building permit approval with LUESA. The rezoning application for the project has been approved. The construction manager has received bids and is preparing for the construction award at the March 23, 2022 board meeting. Construction is scheduled to start after the award. This project consists of a new 100-classroom high school with athletic play fields and stadium. The project is scheduled to be completed August 2024.

CONTROLS

Expenditures for the month of February were \$13.1M. This brings our fiscal year to date total to \$141.7M against the 2022 fiscal year cash flow projection of \$260M. The process of reconciling and closeout of completed 2013 and 2017 bond projects continues. The identified available funding/savings will be used to address the increased costs of the remaining projects in the bond. .

The Controls team continues to submit notices of potential changes at school sites so senior staff can adequately evaluate issues. Additionally, the Controls team continues the processing of contracts, invoices, preparing notices of potential change, change orders, pay applications, and check requests for projects under construction. Captured construction cost data is used to prepare financial reports such as detailed cost reports, budget summaries, reconciliation to CMS books, revisions to and updated cash flows and complete special financial requests by CMS and Mecklenburg County. This process, along with data compilation and management, allows senior staff to provide the proper guidance/direction and accurate information to the program stakeholders.

No Bond related consent items were submitted for Board of Education approval during the month of February 2021.

MWSBE

As of February 2022 the overall MWSBE utilization percentage related to design and construction of the 2017 bond projects is 49.33% which includes 21.03% participation by minority contractors, 27.39% by women contractors and 0.90% participation by small business contractors. This accounts for more than \$285 million of utilization by Minority, Women and Small Business Contractors.

The Diversity & Inclusion Office of Charlotte-Mecklenburg Schools continued to conduct several individual virtual orientations with new MWSBE contractors and prime contractors. In addition, team members also attended/hosted the following outreach sessions/pre-bid meetings and/or workforce development opportunities:

Outreach Sessions:

- J. T Williams pre-bid meeting hosted by New Atlantic
- Windsor Park, Winterfield and Idlewild Relief pre-bid meeting hosted by Rodgers Builders and Holt Brothers
- Supplier Diversity & Inclusion Roundtable Meeting hosted by Mecklenburg County
- Equity, Diversity & Inclusion Panel Discussion hosted by Central Piedmont Community College
- American Contract Compliance Association National Training Institute Planning meetings

Good Faith Efforts:

- New ES Hidden Valley, JW Grier, Newell Relief MWSBE participation documentation
- Ardrey Kell HS Relief MWSBE participation documentation
- E. E. Waddell MWSBE participation documentation
- New Elon, Hawk Ridge, Polo Relief MWSBE participation documentation

Over the next month, team members will continue to work with contractors interested in bidding on the upcoming school projects utilizing various virtual tools to communicate. Contractors are encouraged to review bid advertisements in Charlotte Observer and register as a vendor on the North Carolina Interactive Purchasing System for notification of the various opportunities.

BOND PROGRESS SUMMARY As of February 2022

Funding Source and Value		Amount Committed/Pending	Amount Paid to Date	Amount Expended This Period
2013 Bond	\$301,699,770	\$300,465,943	\$292,518,965	\$31,110
2017 Bond	\$1,019,279,985	\$662,143,504	\$509,775,902	\$13,034,870
Grand Total	\$1,320,979,755	\$962,609,447	\$802,294,867	\$13,065,980

UPCOMING MAJOR CONSTRUCTION PROCUREMENT DATES *Three Month Look Ahead*

<u>School Name</u>	<u>Bid Dates*</u>
New Elementary (Hidden Valley, JW Grier, Newell) <i>(Bids managed by CM - Edifice)</i>	February 2022
New Elementary (Elon, Hawk Ridge, Polo Ridge) <i>(Bids managed by CM - Balfour Beatty)</i>	February 2022
New HS (Ardrey Kell, South Mecklenburg) <i>(Bids managed by CM - Messer)</i>	February 2022
E.E. Waddell <i>(Bids managed by Architect, Moseley)</i>	February 2022

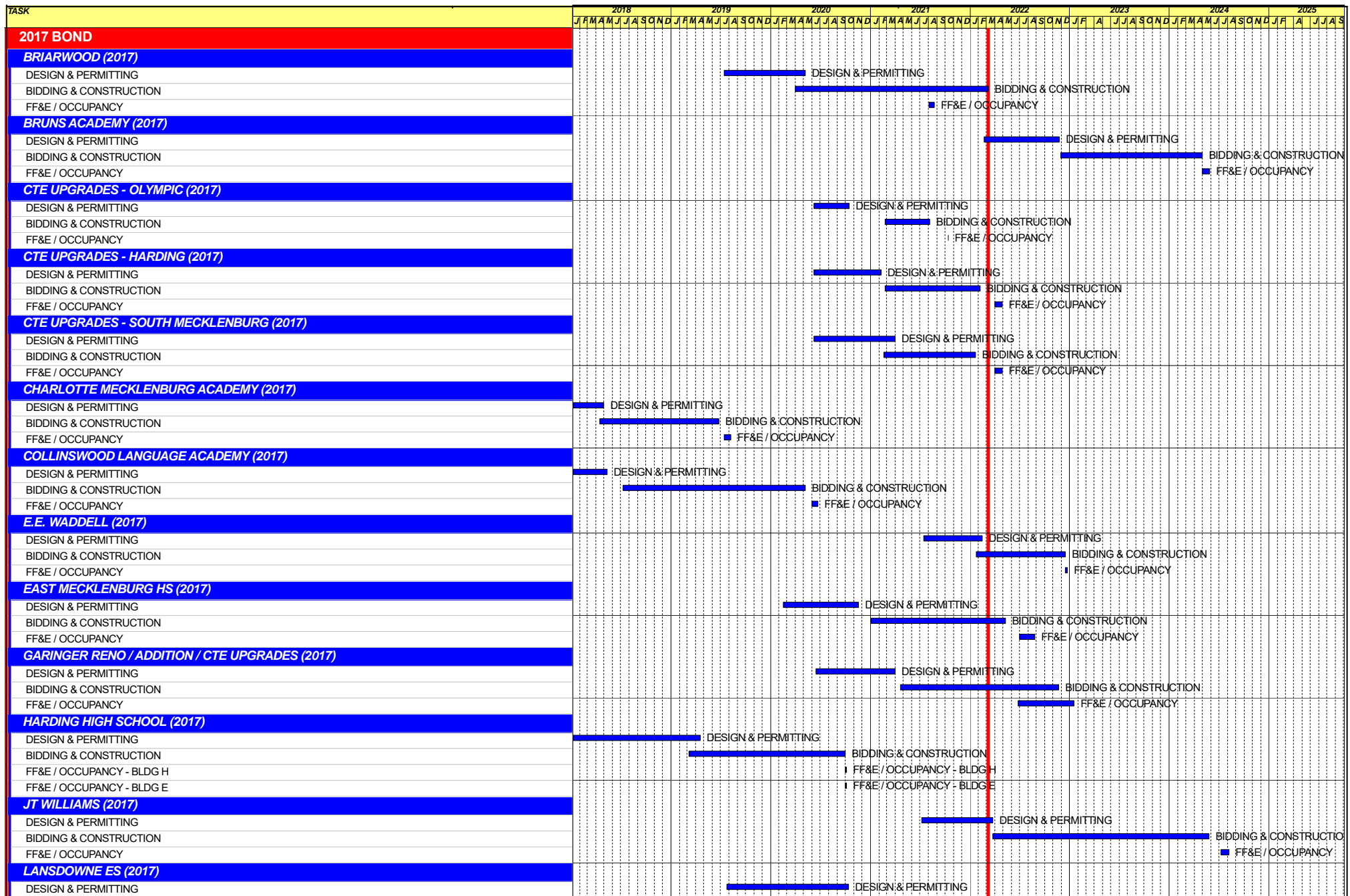
* NOTE: *Work In Progress...Dates Subject to Change.*

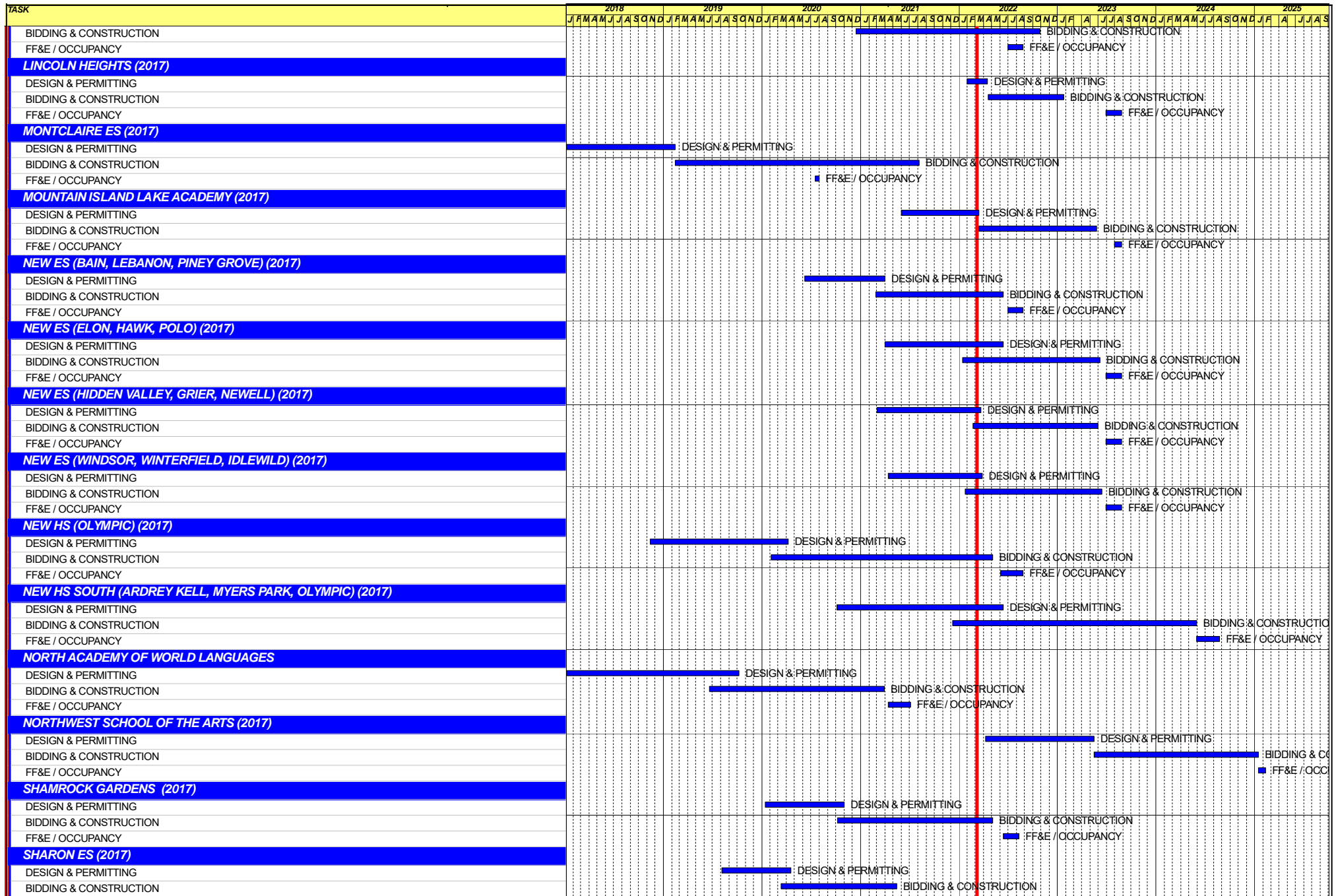
SWING SPACE UTILIZATION

Creating a temporary space for students and staff to occupy during construction on a school’s campus has proven to be beneficial to the project’s schedule and cost and overall safety and efficiency of school operations. When the renovation or expansion of a facility is performed and the facility must remain functionally operational, there are benefits to the owner in using swing space.

We have successfully utilized both onsite and offsite swings. The most desirable swings are “offsite” ones. Onsite swing using mobiles or modulars, likewise has been successfully used. The following is a summary of current swing options planned or in use.

<u>School</u>	<u>No. of Mobiles/Relocation Site</u>	<u>Status (From – To)</u>
Shamrock	Lincoln Heights	August 2020 – August 2022





Capital Improvements Program
Projects in Design or Under Construction

School	Architect	General Contractor/CM
Projects In Design		
E.E. Waddell (17)	Moseley	TBD
J.T. Williams (17)	FWA	New Atlantic
Lincoln Heights Repurpose (17)	Neighboring Concepts	TBD
Mountain Island School (17)	ADW	Whiting-Turner
New Bruns Avenue ES	ADW	Edifice, Inc.
New ES (Elon,Hawk Ridge, Polo Ridge) (17)	Little Diversified	Balfour Beatty
New ES (Hidden Valley, JW Grier, Newell) (17)	ADW	Edifice, Inc.
New ES (Windsor, Winterfield, Idlewild) (17)	Neighboring Concepts	Rodgers-Holt Brothers
New HS (South, Ardrey) (17)	Ratio	Messer
Projects in Bid/Award/Construction Phase		
CTE (Harding, Olympic, South) (17)	MPS	Branch Brownstone
East Mecklenburg High School (17)	Morris Berg	Turner Construction
Garinger Addition/Renovation & CTE (17)	LS3P	Balfour Beatty
Lansdowne Elementary School Replacement (17)	Perkins Eastman	Edifice, Inc.
New ES (Bain, Lebanon Rd, Piney Grove) (17)	FWA	Metcon
Palisades High School (Olympic Relief) (17)	Little Diversified	Edifice, Inc.
Shamrock Gardens Elementary School Replacement (17)	Little Diversified	Rodgers-Holt Brothers
West Charlotte High School (17)	LS3P	Rodgers-Holt Brothers

Capital Improvements Program
Projects Substantially Completed/Closed *

School	Turnover Year	Architect	General Contractor
Briarwood Elementary School Replacement (17)	Aug-21	ADW	New Atlantic Contracting
Montclair Elementary School (17)	Aug-21	WHN	Messer Construction
North Academy of World Languages (17)	Aug-21	ADW	New Atlantic Contracting
Sharon Elementary School (17)	Aug-21	Clark Nexsen	Samet
South Academy of International Languages (17)	Aug-21	FWA	Messer Construction
South Pine Academy (17)	Aug-21	FWA	Metcon
West Mecklenburg Gym (17)	Aug-21	Moseley	Barnhill/D.A. Everett
Collinswood Language Academy (17)	Aug-20	Perkins Eastman	Turner Construction
Harding High School Renovation (17)	Aug-20	SFLA	Barnhill Contracting
Rea Farms STEAM Academy (13)	Aug-20	Little Diversified	Balfour Beatty
Ashley Park K-8 Conversion (13)	Aug-19	ADW	Turner Construction
Druid Hills K-8 Conversion (13)	Aug-19	ADW	Edifice, Inc.
Selwyn Elementary (13)	Aug-19	Clark Nexsen	Balfour Beatty
Charlotte Mecklenburg Academy (17)	Aug-19	KSQ	Edifice, Inc.
Davidson K-8 (13)	Aug-19	Little Diversified	Gilbane
CTE - North Mecklenburg High (13)	Aug-19	LS3P	Shiel Sexton
CTE - Garinger (13)	Mar-19	LS3P	Hostetter & Son
CTE - Independence (13)	Mar-19	LS3P	D.E. Brown
CTE - West Mecklenburg (13)	Mar-19	LS3P	Hostetter & Son
Charlotte East Language Academy (13)	Aug-18	Morris Berg	Edifice, Inc
Myers Park High School Phase 3 (13)	Aug-18	Boomerang Design	BE&K
Northridge Middle (13)	Aug-18	Morris Berg	Barnhill Contracting
Myers Park High Bldg 2 (13)	Feb-18	Boomerang Design	BE&K
East Mecklenburg High Addition (13)	Jan-18	Bergman (fna Gantt Huberman)	Edifice, Inc.
J.M. Alexander Middle (13)	Aug-17	FWA Group	Balfour Beatty
Northwest School of the Arts Renovation (13)	Aug-17	Moseley	Turner Construction
Renaissance West STEAM Academy (13)	Aug-17	Little Diversified	Rodgers Construction
South Mecklenburg High Addition (13)	Jul-17	SFLA	Barnhill Contracting
Myers Park High Bldg 1 (13)	Sep-16	Boomerang	KBR
Statesville Road Elementary (13)	Aug-16	ADW	JE Dunn
Nations Ford Elementary (13)	Aug-16	Wash Hatem Nelson	Messer Construction
Olympic High Addition (13)	Aug-16	McMillan, Pazdan, Smith	Turner Construction
Lawrence Orr Elementary (07)	Aug-15	Cort Architectural Group	DH Griffin/Metcon
Parkside Elementary (07)	Aug-15	Wash Hatem Nelson	Clancy & Theys
Hawthorne High Renovations (07)	Aug-15	Morris-Berg	Balfour Beatty
Newell Elementary (07)	Aug-15	Perkins Eastman	New Atlantic Contracting
Ranson Middle (07)	Aug-15	Morris-Berg	Edifice, Inc.
Vance High	Jan-15	LS3P	Matthews Construction Co., Inc.
Garinger High - Renovations/Addition	Aug-14	Adams Group Architects	Turner Construction
Olympic High - Stadium	Aug-14	Site Solutions	Turner Construction
West Mecklenburg High - Stadium	Aug-14	Site Solutions	Turner Construction
Collinswood - Indoor Air Quality	Aug-14	PEA	The Bowers Group
Lansdowne - Indoor Air Quality	Aug-14	AeroRaq	Tyler 2
McKee Road - Indoor Air Quality	Aug-14	McCracken & Lopez	Godfrey Construction
Garinger High - Track & Field	Jul-14	Site Solutions	Turner Construction
Independence High - Gym	Jun-14	Shook Kelly	Shelco, Inc. (CM)
Palisades Park Elementary	May-14	Wash Hatem Nelson	Clancy & Theys
East Mecklenburg High Auditorium	Jan-14	Gantt Huberman Associates	Godfrey Construction Co., Inc.
Pineville Elementary	Aug-13	Cort Architectural Group	Beam Construction Co., Inc.
Bain Elementary	Aug-13	ADW	Edison Foard
Grand Oak Elementary	Aug-13	ADW	Matthews Construction Co., Inc.
McClintock Middle	Aug-13	FWA Group	Shelco, Inc.

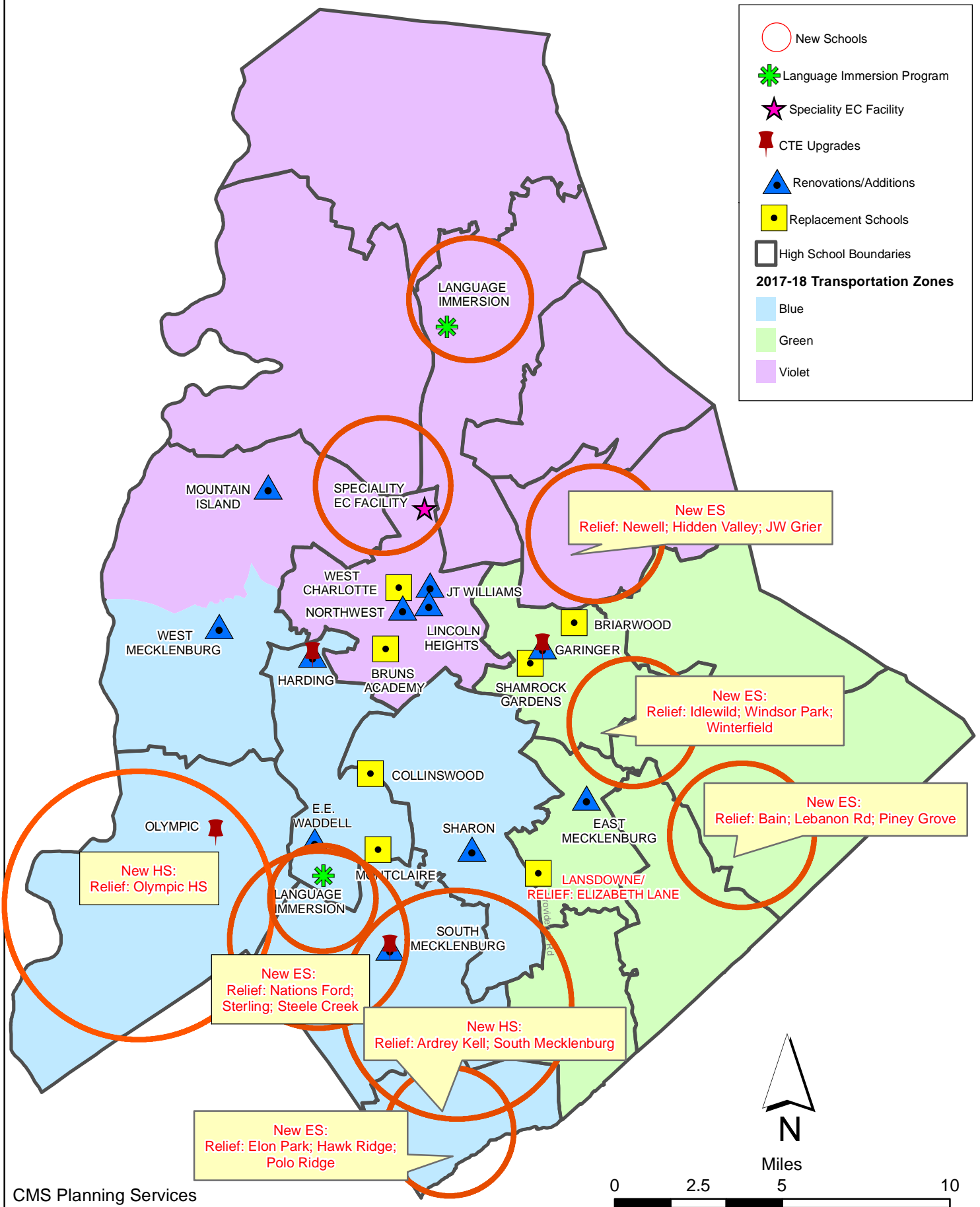
Capital Improvements Program

Projects Substantially Completed/Closed *

School	Turnover Year	Architect	General Contractor
Sedgefield Elementary Demolition	Oct-12	Cort Architectural Group	EHG, LLC
Alexander Graham Middle Gym Reno	Aug-12	MBAJ Architecure	Edison Foard
First Ward - Demolition & Bus lot	Aug-12	MBAJ Architecure	T.K. Browne
South Meck High Parking Lot Renovation	Aug-12	Little Diversified	Sorenson Gross
Cochrane Middle - Kitchen	Aug-11	MBAJ Architecure	Sorenson Gross
Hough High	Aug-10	Little Diversified	Rodgers Construction
Rocky River High	Aug-10	Little Diversified	Balfour Beatty

Projects closed prior to 2010 are not shown

CMS Capital Improvement Plan 2017 Bond Projects



PROJECT STATUS REPORT



Monthly Project Status 2017 Bond Summary February 2022

Project	Current Project Estimate	Project Scope	** Occupy On	Design Phase	Construction Progress	Project Status
Briarwood Elementary School (17)	\$ 31,762,730	45-classroom replacement facility; replaces school built in 1956.	August 2021	Complete	98 %	The construction manager for Briarwood Elementary Replacement School turned over the remaining parking lots and completed the phase two construction activities. The construction manager is working through the punch list and final closeout.
Bruns Academy (17)	\$ 39,784,927	New 45-classroom elementary school (K-5); replaces old school built in 1969.	August 2024	Not Started	0 %	The New Bruns Avenue Elementary (Replacement) pre-design submittal has been received and comments returned to the architect. The project has progressed to the schematic design phase. CMS due diligence activities continue to progress.
Career and Technology Education (17)	\$ 10,159,765	Phase I CTE upgrades at Olympic, Harding, Garinger and South Mecklenburg.	January 2022	Complete	98 %	The CTE projects at Harding and South Mecklenburg have completed the construction renovations. The contractor is still working on punch list items and a few material issues that required substitute equipment. The South Mecklenburg culinary kitchen is now open to students and staff. The project at South Mecklenburg renovated the old kitchen area into a culinary arts lab and classroom. The Harding project still has the temporary construction partition walls in place. The CTE department is working through delays with the FF&E that is planned for use in the new Harding suite. The Harding project renovated the existing classrooms in the auditorium building to develop a suite of technology classrooms.
Charlotte-Mecklenburg Academy (17)	\$ 17,699,220	New EC school located on the old Statesville Elementary School site.	August 2019	Complete	100 %	Project is complete.
Collinswood Language Academy (17)	\$ 41,422,560	New 63-classroom K-8 facility on the site of the Smith Family Center.	August 2020	Complete	100 %	Project is complete.

Monthly Project Status

2017 Bond Summary

February 2022

Project	Current Project Estimate	Project Scope	** Occupy On	Design Phase	Construction Progress	Project Status
E.E. Waddell (17)	\$ 5,137,367	Repurpose current E.E. Waddell to reopen as a magnet high school.	August 2023	Construction Documents	0 %	The E.E. Waddell High School project has achieved building permit approval. The project's bid activities have concluded and an apparent low bidder has been identified. Recommendation to award the project will be discussed at the second board meeting in March. The project consists of light renovations to the existing science classrooms, maker space, lobby, HVAC work, limited VCT and acoustical ceilings. This project will start construction in late spring 2022.
East Mecklenburg High School (17)	\$ 13,858,594	This project will provide for the design, and construction of a new 30 classroom building.	August 2022	Complete	75 %	The construction manager for East Mecklenburg High School has achieved building dry-in. The roof coping is being installed at the parapet wall. The window frames and glass have been installed at the classroom elevations and hard tile has started at the bathrooms. The mechanical contractor is working towards temporary conditioned air using the permanent system. The classroom wing finishes are progressing from the 1st floor up to the 3rd.
Garinger High School (17)	\$ 5,986,979	Project includes the design and construction for renovations of 300 building and a new 16 classroom building.	January 2023	Complete	40 %	The Garinger Addition and Renovation construction manager continued with interior and exterior activities. The exterior masonry veneer was completed and the mason is demobilizing. The exterior metal panels are being installed along with the final window frames and glass. The MEP trades are finalizing the install of work above ceilings on the first floor and continuing with installs on the second floor. The painter has installed the prime and first coat of paint on the first floor along with priming the second. The mechanical contractor continues with installations in the main mechanical room in preparation to start the units in March.
Harding High School (17)	\$ 13,747,878	Renovation of the kitchen, cafeteria, existing gym (aux) and the addition of a new gym.	August 2020	Complete	100 %	Construction Manager has change items that will be completed summer 2021 and is finalizing financial reconciliation.

Monthly Project Status

2017 Bond Summary

February 2022

Project	Current Project Estimate	Project Scope	** Occupy On	Design Phase	Construction Progress	Project Status
JT Williams (17)	\$ 15,732,600	Project includes building renovations to J.T. Williams Montessori magnet.	August 2024	Design Development	0 %	The JT Williams Secondary Montessori project continues to progress in the construction document phase. The project is scheduled to submit for its building permit in early March. The project's base scope focuses on required civil improvements, architectural and MEP renovations in the 100 and 200 buildings. The renovations to the remaining campus buildings mechanical and classroom lighting systems are being designed and will be bid as alternates. A 10-classroom modular will be used for swing and future space at the school site. Phasing plans to execute the project have been coordinated with the principal.
Lansdowne Elementary School (17)	\$ 34,078,834	New 45-classroom school; replaces old school built in 1959 and relieve crowding at Elizabeth Lane ES.	August 2022	Complete	70 %	The Lansdowne Elementary School construction manager has completed the brick veneer. The window frames, glass and drywall finishing activities are progressing. The MEP trade partners are continuing final rough-in for finishes to begin. The ceiling grid for lay-in ceilings is being installed throughout. The site contractor is also working on storm water piping and drains allowing final grades to be established.
Lincoln Heights Elementary School (17)	\$ 4,588,675	Repurpose and reopen as magnet school.	August 2023	Construction Documents	0 %	Shamrock Gardens will be utilizing the Lincoln Heights Elementary building as swing space August 2020 - August 2022. Playgrounds were replaced and new digital signage was installed summer 2020. Based on Board approval in May 2021 the occupancy date has been moved to 2023.
Montclair Elementary School (17)	\$ 28,559,390	New 45-classroom replacement facility replacing school built in 1958.	August 2020	Complete	99 %	This month the construction manager for the Montclair Elementary School completed the final phase of work on the project. The new 45-classroom elementary school building was occupied in August.

Monthly Project Status

2017 Bond Summary

February 2022

Project	Current Project Estimate	Project Scope	** Occupy On	Design Phase	Construction Progress	Project Status
Mountain Island Lake Academy (17)	\$ 10,488,400	K-8 Phase 2 - New gymnasium and specialty classrooms.	August 2023	Construction Documents	0 %	The Mountain Island Lake Academy review of construction documents is complete and comments returned to the architect for incorporation into the design. The early steel and roof procurement package bids have been reviewed for approval by the BOE in early March. LUESA and City Engineering permit approvals continue to progress with their reviews. The remaining scopes of work are scheduled for bid and award for late May. The project consists of a building addition containing a middle school gymnasium and visual and performing arts classrooms.
New Elementary School (Bain, Lebanon, Piney Grove) (17)	\$ 30,455,951	New 45-classroom elementary school; relieves crowding at Bain, Lebanon Road, Piney Grove.	August 2022	Complete	64 %	The New Elementary School (Bain, Lebanon, Piney Grove Relief) construction manager has completed the brick veneer. The window frames have started at the classroom wing. The temporary heat is running to allow the dry wall finish to progress. The MEP trade partners are working on above ceiling rough in. The site contractor is working on erosion control and also has some areas on finish grade. Supply chain issues are impacting scheduled delivery dates of electrical main panels and switch gear forcing the contractors to look at substitutions and construction sequencing. The team has also received a preliminary design to review for the required signal at the school entrance.
New Elementary School (Elon, Hawk Ridge, Polo Relief) (17)	\$ 51,856,961	New 45-classroom elementary school to relieve Elon, Hawk Ridge, Polo.	August 2023	Construction Documents	0 %	The New Elementary School (Elon, Hawk Ridge, Polo Relief) project continues its review for building permit approval with LUESA. The rezoning application for the project has been approved. The construction manager has received bids and is preparing for the construction award at the March 23, 2022 board meeting.
New Elementary School (Hidden Valley, JW Grier, Newell) (17)	\$ 43,579,387	New 45-classroom elementary school; relieves overcrowding at Hidden Valley, J.W. Grier, Newell.	August 2023	Construction Documents	0 %	The New Elementary School (Hidden Valley, JW Grier, Newell Relief) project continues its review for building permit approval with LUESA. The construction manager has received bids and is preparing for the construction award at the March 23, 2022 board meeting. Construction is scheduled to start after the award.

Monthly Project Status

2017 Bond Summary

February 2022

Project	Current Project Estimate	Project Scope	** Occupy On	Design Phase	Construction Progress	Project Status
New Elementary School (Windsor, Winterfield, Idlewild Relief) (17)	\$ 42,697,022	New 45-classroom elementary school to relieve Windsor, Winterfield, and Idlewild ES.	August 2023	Construction Documents	0 %	The New Elementary School (Windsor, Winterfield, Idlewild Relief) project has been submitted to LUESA for building permit approval and CDOT has completed their review and the required modifications are being addressed. The construction manager has begun their procurement phase of the remaining bid packages which are scheduled for bid in late spring.
New High School (South, Ardrey) (17)	\$ 160,930,460	New 100 classroom high school to relieve South Mecklenburg, Ardrey Kell and Myers Park HS.	August 2024	Construction Documents	0 %	The New High School (South, Ardrey Kell Relief) project continues its review for building permit approval with LUESA. The rezoning application for the project has been approved. The construction manager has received bids and is preparing for the construction award at the March 23, 2022 board meeting. Construction is scheduled to after the award. This project consists of a new 100-classroom high school with athletic play fields and stadium.
North Academy of World Languages	\$ 42,359,367	New 66 classroom K-8 Language Immersion facility located on the old J.M. Alexander Middle School site.	August 2021	Complete	99 %	The project closeout and final financial reconciliation process with the construction manager is underway.
Northwest School of the Arts (17)	\$ 20,467,000	Replace classroom building built in 1952 and build classroom addition that supports program.	August 2024	Not Started	0 %	Design to start in early 2022.
Palisades High School	\$ 108,908,793	New 100 classroom high school; relieves crowding at Olympic High School.	August 2022	Complete	92 %	The construction manager for the Palisades High School (fka New High School Olympic Relief) continued with finishes throughout the building including ceiling tile, final paint, flooring, doors, hardware, toilet partitions, MEP trim out, marker/tack boards, etc. The exterior improvements continue around the building and athletic fields with sidewalks, drives, and landscaping being installed.

Monthly Project Status

2017 Bond Summary

February 2022

Project	Current Project Estimate	Project Scope	** Occupy On	Design Phase	Construction Progress	Project Status
Shamrock Gardens Elementary School (17)	\$ 31,358,351	New 45-classroom replacement facility.	August 2022	Complete	77 %	The Shamrock Gardens Elementary School construction manager focused on the three-story classroom wing completing the overhead MEP on all levels to all ceiling grid installations. Casework and flooring started on the first floor working their way up to the third. MEP trim out was completed in the administration wing along with final paint. Kitchen equipment started to arrive for final hookup in March. The bus lot was final graded, and layout of curb was installed for placement in March.
Sharon Elementary School (17)	\$ 9,125,862	Add 16 classroom building and increase capacity of cafeteria.	August 2021	Complete	99 %	The project closeout and final financial reconciliation process with the construction manager is underway.
South Academy of International Languages (fka New K-8 School (South) (17)	\$ 41,209,367	New 71 classroom K-8 Language Immersion facility located on the old Nations Ford Elementary School site.	August 2021	Complete	100 %	The project closeout and final financial reconciliation process with the construction manager is underway.
South Mecklenburg High School (17)	\$ 15,622,927	Renovate/replace two classroom buildings built in 1958 to upgrade learning conditions.	January 2025	Not Started	0 %	Planning underway, design to start in 2022.
South Pine Academy	\$ 31,272,550	New 45-classroom elementary school to relieve Nations Ford, Sterling, and Steele Creek.	August 2021	Complete	100 %	The project closeout and final financial reconciliation process with the construction manager is underway.
West Charlotte High School (17)	\$ 105,977,166	New 100 classroom school to replace current facility built in 1954.	August 2022	Complete	79 %	The trade contractors continue to work throughout the West Charlotte High School facility. The finishes throughout the facility are progressing well. Most floor finishes are now complete and the hard tile at bathrooms is nearing completion. The overhead inspections are going well allowing most of the ceiling tiles to be dropped at lay-in areas. Accent paint and athletic striping at the gymnasium is complete. Casework is nearing completion with countertops progressing. The site contractor continues to pour sidewalks allowing finish grades to be established. The team is now working with administration to finalize transition plans from Phase 1 to Phase 2. The stadium improvements including the field house and concession stands are nearing completion. The new bus lot base layer of asphalt is in place.

February 2022

Project	Current Project Estimate	Project Scope	** Occupy On	Design Phase	Construction Progress	Project Status
West Mecklenburg High School (17)	\$ 10,450,902	Provide new gymnasium, the existing gymnasium will become the auxilliary.	August 2021	Complete	99 %	The project closeout and final financial reconciliation process with the construction manager is underway.

MONTHLY PROJECT PHOTOS

PROJECT PROGRESS PHOTOS



Palisades High School

PROJECT PROGRESS PHOTOS



Palisades High School

PROJECT PROGRESS PHOTOS



Palisades High School

PROJECT PROGRESS PHOTOS



Palisades High School

PROJECT PROGRESS PHOTOS



West Charlotte High School Replacement

PROJECT PROGRESS PHOTOS



West Charlotte High School Replacement

PROJECT PROGRESS PHOTOS



West Charlotte High School Replacement

PROJECT PROGRESS PHOTOS



West Charlotte High School Replacement

PROJECT PROGRESS PHOTOS



West Charlotte High School Replacement

PROJECT PROGRESS PHOTOS



Shamrock Gardens Elementary School

PROJECT PROGRESS PHOTOS



Shamrock Gardens Elementary School

PROJECT PROGRESS PHOTOS



Shamrock Gardens Elementary School

PROJECT PROGRESS PHOTOS



Shamrock Gardens Elementary School

PROJECT PROGRESS PHOTOS



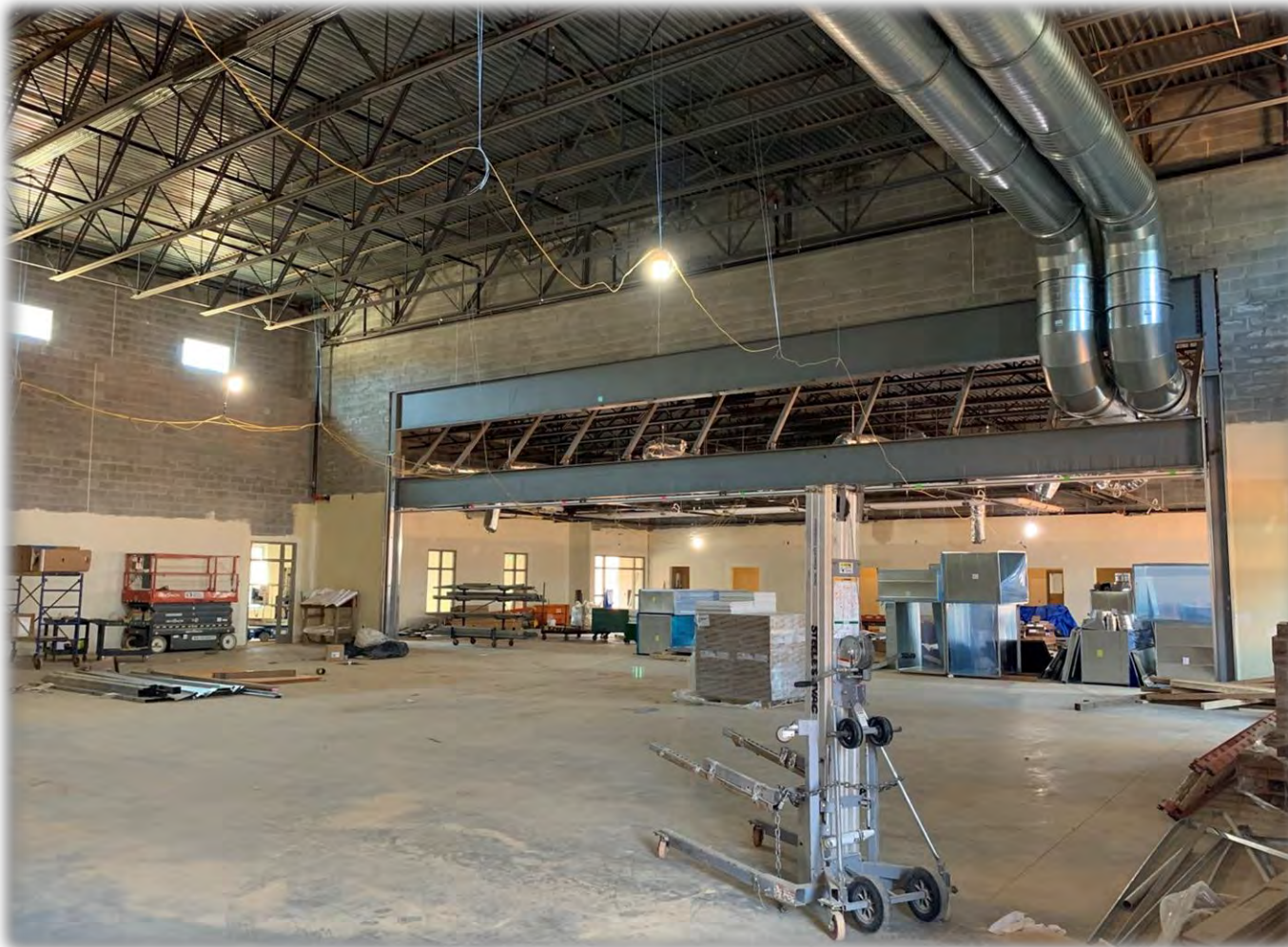
Lansdowne Elementary School

PROJECT PROGRESS PHOTOS



Lansdowne Elementary School

PROJECT PROGRESS PHOTOS



Lansdowne Elementary School

PROJECT PROGRESS PHOTOS



Lansdowne Elementary School

PROJECT PROGRESS PHOTOS



East Mecklenburg High School

PROJECT PROGRESS PHOTOS



East Mecklenburg High School

PROJECT PROGRESS PHOTOS



East Mecklenburg High School

PROJECT PROGRESS PHOTOS



New ES (Bain, Lebanon, Piney Grove Relief)

PROJECT PROGRESS PHOTOS



New ES (Bain, Lebanon, Piney Grove Relief)

PROJECT PROGRESS PHOTOS



New ES (Bain, Lebanon, Piney Grove Relief)

PROJECT PROGRESS PHOTOS



New ES (Bain, Lebanon, Piney Grove Relief)

PROJECT PROGRESS PHOTOS



Garinger High School

PROJECT PROGRESS PHOTOS



Garinger High School

PROJECT PROGRESS PHOTOS



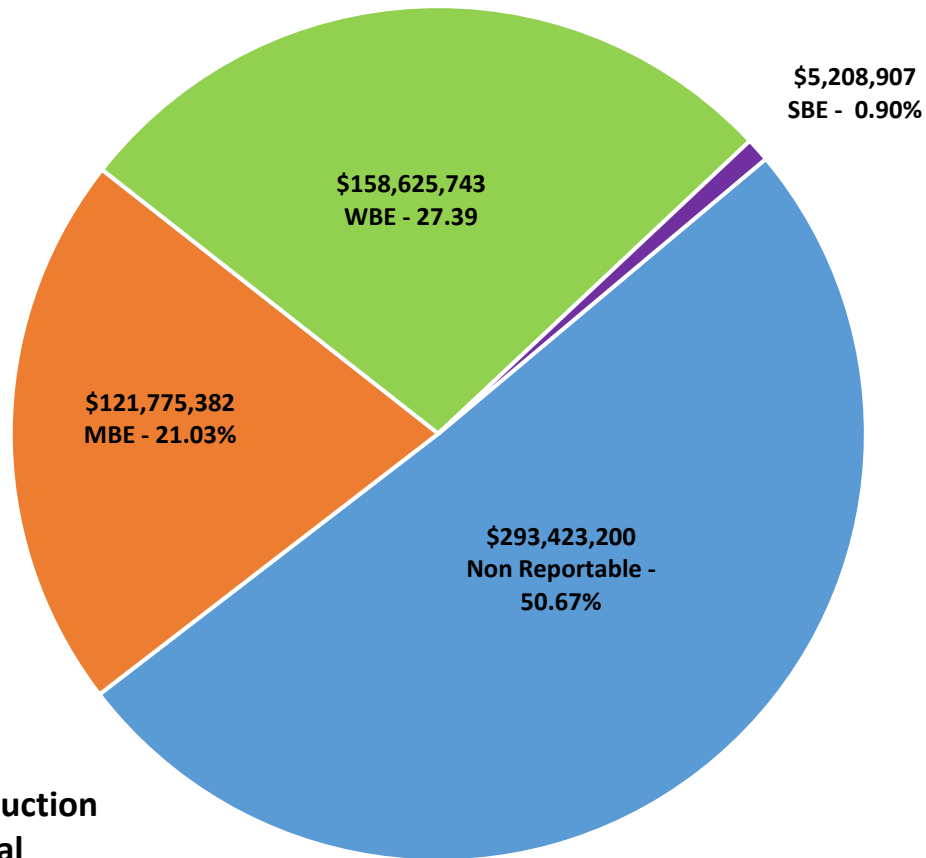
Garinger High School

MWSBE PARTICIPATION REPORT

Facility	Contract Amount	African American MBE\$	%	Other MBE \$	%	Total MBE \$	%	Other WBE \$	%	Other SBE \$	%	Total	%
<u>Briarwood Elementary School (17)</u>	\$28,723,186	\$4,026,343	14.02%	\$2,424,277	8.44%	\$6,450,620	22.46%	\$2,039,792	7.10%	\$152,902	0.53%	\$8,643,314	30.09%
<u>Career and Technology Education (17)</u>	\$5,922,484	\$548,729	9.27%	\$300,652	5.08%	\$849,381	14.34%	\$246,751	4.17%	\$65,475	1.11%	\$1,161,607	19.61%
<u>Charlotte-Mecklenburg Academy (17)</u>	\$17,035,852	\$198,536	1.17%	\$1,029,192	6.04%	\$1,227,728	7.21%	\$872,755	5.12%	\$13,200	0.08%	\$2,113,683	12.41%
<u>Collinswood Language Academy (17)</u>	\$38,527,740	\$649,287	1.69%	\$1,613,103	4.19%	\$2,262,390	5.87%	\$11,362,566	29.49%	\$9,328	0.02%	\$13,634,284	35.39%
<u>E.E. Waddell (17)</u>	\$158,137	\$0	0.00%	\$0	0.00%	\$0	0.00%	\$10,950	6.92%	\$0	0.00%	\$10,950	6.92%
<u>East Mecklenburg High School (17)</u>	\$12,575,074	\$603,811	4.80%	\$532,460	4.23%	\$1,136,271	9.04%	\$490,382	3.90%	\$681,075	5.42%	\$2,307,728	18.35%
<u>Garinger High School (17)</u>	\$4,212,784	\$49,330	1.17%	\$412,572	9.79%	\$461,902	10.96%	\$165,433	3.93%	\$0	0.00%	\$627,335	14.89%
<u>Harding High School (17)</u>	\$13,015,986	\$1,504,505	11.56%	\$310,356	2.38%	\$1,814,862	13.94%	\$3,846,831	29.55%	\$176	0.00%	\$5,661,869	43.50%
<u>JT Williams (17)</u>	\$1,447,931	\$2,000	0.14%	\$20,000	1.38%	\$22,000	1.52%	\$0	0.00%	\$0	0.00%	\$22,000	1.52%
<u>Lansdowne Elementary School (17)</u>	\$30,617,679	\$2,187,869	7.15%	\$468,305	1.53%	\$2,656,174	8.68%	\$2,220,197	7.25%	\$223,625	0.73%	\$5,099,996	16.66%
<u>Lincoln Heights Elementary School (17)</u>	\$454,706	\$92,274	20.29%	\$18,800	4.13%	\$111,074	24.43%	\$0	0.00%	\$74,503	16.38%	\$185,577	40.81%
<u>Montclair Elementary School (17)</u>	\$26,093,784	\$3,617,952	13.87%	\$2,260,381	8.66%	\$5,878,333	22.53%	\$5,729,641	21.96%	\$518,632	1.99%	\$12,126,605	46.47%
<u>Mountain Island Lake Academy (17)</u>	\$922,740	\$0	0.00%	\$36,650	3.97%	\$36,650	3.97%	\$19,550	2.12%	\$0	0.00%	\$56,200	6.09%
<u>New Elementary School (Bain, Leban)</u>	\$26,302,119	\$4,678,087	17.79%	\$18,841,591	71.64%	\$23,519,678	89.42%	\$1,214,672	4.62%	\$308,680	1.17%	\$25,043,030	95.21%
<u>New Elementary School (Elon, Hawk)</u>	\$7,544,610	\$0	0.00%	\$0	0.00%	\$0	0.00%	\$61,240	0.81%	\$0	0.00%	\$61,240	0.81%
<u>New Elementary School (Hidden Vall)</u>	\$7,682,288	\$182,000	2.37%	\$99,674	1.30%	\$281,674	3.67%	\$3,956,796	51.51%	\$25,600	0.33%	\$4,264,070	55.51%
<u>New Elementary School (Windsor, W)</u>	\$8,721,845	\$1,456,670	16.70%	\$258,000	2.96%	\$1,714,670	19.66%	\$358,675	4.11%	\$0	0.00%	\$2,073,345	23.77%
<u>New High School (South, Ardrey) (17)</u>	\$7,918,382	\$13,500	0.17%	\$91,000	1.15%	\$104,500	1.32%	\$507,465	6.41%	\$27,500	0.35%	\$639,465	8.08%
<u>North Academy of World Languages</u>	\$38,090,783	\$1,688,775	4.43%	\$1,575,863	4.14%	\$3,264,638	8.57%	\$3,471,693	9.11%	\$437,418	1.15%	\$7,173,748	18.83%
<u>Northwest School of the Arts (17)</u>	\$218,130	\$0	0.00%	\$0	0.00%	\$0	0.00%	\$0	0.00%	\$0	0.00%	\$0	0.00%
<u>Palisades High School</u>	\$98,154,986	\$13,312,696	13.56%	\$5,874,324	5.98%	\$19,187,020	19.55%	\$8,458,793	8.62%	\$766,550	0.78%	\$28,412,363	28.95%
<u>Shamrock Gardens Elementary Scho</u>	\$27,979,335	\$2,162,828	7.73%	\$1,468,953	5.25%	\$3,631,781	12.98%	\$22,895,608	81.83%	\$275,594	0.98%	\$26,802,983	95.80%
<u>Sharon Elementary School (17)</u>	\$8,525,796	\$278,444	3.27%	\$338,513	3.97%	\$616,956	7.24%	\$926,873	10.87%	\$223,725	2.62%	\$1,767,554	20.73%
<u>South Academy of International Lang</u>	\$37,065,863	\$6,023,141	16.25%	\$2,431,071	6.56%	\$8,454,212	22.81%	\$10,755,611	29.02%	\$347,799	0.94%	\$19,557,622	52.76%

Facility	Contract Amount	African American MBE\$	%	Other MBE \$	%	Total MBE \$	%	Other WBE \$	%	Other SBE \$	%	Total	%
<u>South Mecklenburg High School (17)</u>	\$115,472	\$0	0.00%	\$0	0.00%	\$0	0.00%	\$0	0.00%	\$0	0.00%	\$0	0.00%
<u>South Pine Academy</u>	\$26,205,173	\$916,165	3.50%	\$19,416,086	74.09%	\$20,332,251	77.59%	\$4,342,256	16.57%	\$237,754	0.91%	\$24,912,261	95.07%
<u>West Charlotte High School (17)</u>	\$94,990,975	\$15,223,007	16.03%	\$1,744,400	1.84%	\$16,967,406	17.86%	\$72,607,462	76.44%	\$535,596	0.56%	\$90,110,464	94.86%
<u>West Mecklenburg High School (17)</u>	\$9,809,391	\$283,809	2.89%	\$509,403	5.19%	\$793,212	8.09%	\$2,063,752	21.04%	\$283,775	2.89%	\$3,140,739	32.02%
Grandtotal	\$579,033,232	\$59,699,757	10.31%	\$62,075,625	10.72%	\$121,775,382	21.03%	\$158,625,743	27.39%	\$5,208,907	0.90%	\$285,610,032	49.33%

MWSBE Participation 2017 Bond Projects



**Design and Construction
Contract Total
\$579,033,232**

PROJECT CONTROLS

CHARLOTTE-MECKLENBURG BOARD OF EDUCATION
2013 BOND SERIES-CAPITAL IMPROVEMENT PROGRAM
BUDGET STATUS REPORT

	Original Project Budget	Current Project Budget	Committed Amount	Approved Change Orders	Total Committed	Pending Commitments	To Be Committed	Prev Paid To Date	Paid To Date	Balance To Complete	Monthly Expenditure
	(A)	(B)	(C)	(D)	(E)=C+D	(F)	(G)=(B-E-F)	(H)	(I)	(J)=(B-I)	(K)=(I-H)
<u>A. REPLACEMENT & RENOVATIONS</u>											
1 Career & Technology Education Institutes Phase 1:	\$8,640,000	\$18,697,857	\$6,963,309	\$11,734,547	\$18,697,856	\$0	\$1	\$11,077,018	\$11,105,514	\$7,592,342	\$28,497
2 Davidson K-8 Conversion	\$9,500,000	\$13,461,149	\$2,131,151	\$11,329,998	\$13,461,149	\$0	\$0	\$13,461,149	\$13,461,149	\$0	\$0
3 J.M. Alexander Middle Replacement	\$30,672,000	\$29,845,539	\$4,502,518	\$25,343,021	\$29,845,539	\$0	\$0	\$29,845,539	\$29,845,539	\$0	\$0
4 Nations Ford Elementary Replacement	\$19,440,000	\$19,231,603	\$3,958,869	\$15,272,733	\$19,231,603	\$0	\$0	\$19,231,604	\$19,231,604	\$0	\$0
5 Northwest School of the Arts	\$12,420,000	\$12,868,718	\$2,047,917	\$10,820,801	\$12,868,718	\$0	\$0	\$12,868,719	\$12,868,719	\$0	\$0
6 Oakhurst STEAM Magnet Elementary/Starmount	\$5,940,000	\$5,407,812	\$3,471,397	\$1,936,415	\$5,407,812	\$0	\$0	\$5,407,812	\$5,407,812	\$0	\$0
7 Pre-K-8 Conversions Phase II: Ashley Park/ Bruns	\$24,732,000	\$19,700,808	\$4,167,669	\$15,533,138	\$19,700,807	\$0	\$0	\$19,700,807	\$19,700,807	\$0	\$0
8 Selwyn Elementary	\$2,592,000	\$4,624,831	\$744,799	\$3,880,032	\$4,624,831	\$0	\$0	\$4,624,831	\$4,624,831	\$0	\$0
9 Statesville Road Elementary	\$20,340,000	\$20,648,510	\$5,081,473	\$15,567,037	\$20,648,509	\$0	\$0	\$20,648,509	\$20,648,509	\$0	\$0
Total Replacement & Renovations	\$134,276,000	\$144,486,825	\$33,069,102	\$111,417,722	\$144,486,824	\$0	\$1	\$136,865,987	\$136,894,484	\$7,592,342	\$28,497
<u>B. RESPONSE TO ENROLLMENT GROWTH</u>											
1 East Mecklenburg High Addition	\$12,744,000	\$10,988,287	\$3,369,684	\$7,618,603	\$10,988,287	\$0	\$0	\$10,988,287	\$10,988,287	\$0	\$0
2 Myers Park High Addition	\$22,248,000	\$11,040,942	\$1,207,493	\$9,833,448	\$11,040,942	\$0	\$0	\$11,040,941	\$11,040,941	\$0	\$0
3 Northridge Middle Addition	\$6,448,000	\$6,366,170	\$2,114,306	\$4,251,865	\$6,366,171	\$0	\$0	\$6,366,171	\$6,366,171	\$0	\$0
4 Olympic High Addition/Renovation	\$8,964,000	\$8,947,310	\$2,002,694	\$6,944,615	\$8,947,310	\$0	\$0	\$8,947,310	\$8,947,310	\$0	\$0
5 South Mecklenburg High Addition	\$18,360,000	\$16,307,355	\$2,922,282	\$13,385,073	\$16,307,355	\$0	\$0	\$16,307,355	\$16,307,355	\$0	\$0
6 Charlotte East Language Academy (FKA -New Lang	\$30,376,000	\$31,387,929	\$5,740,182	\$25,647,747	\$31,387,929	\$0	\$0	\$31,387,929	\$31,387,929	\$0	\$0
7 Rea Farms STEAM Academy	\$31,376,000	\$40,476,000	\$9,060,568	\$30,187,065	\$39,247,633	(\$5,460)	\$1,233,827	\$38,884,923	\$38,887,537	\$1,588,463	\$2,614
8 Renaissance West STEAM Academy (FKA New Pre-	\$30,376,000	\$31,698,952	\$5,667,388	\$26,031,564	\$31,698,952	\$0	\$0	\$31,698,952	\$31,698,952	\$0	\$0
Total Response to Enrollment Growth	\$160,892,000	\$157,212,946	\$32,084,598	\$123,899,981	\$155,984,579	(\$5,460)	\$1,233,827	\$155,621,868	\$155,624,482	\$1,588,464	\$2,614
<u>C. CONTINGENCY</u>											
	\$0	\$0	\$0	\$0	\$0	\$0	\$0	\$0	\$0	\$0	\$0
Total Contingency	\$0	\$0	\$0	\$0	\$0	\$0	\$0	\$0	\$0	\$0	\$0
TOTAL LOCAL BOND PROGRAM	\$295,168,000	\$301,699,771	\$65,153,700	\$235,317,703	\$300,471,403	(\$5,460)	\$1,233,828	\$292,487,855	\$292,518,965	\$9,180,805	\$31,110

Original project estimated costs approved by the Board Of Education on July 23, 2013 and approved by the voters of Mecklenburg County on November 5, 2013.

Note: Mecklenburg County's appropriated interest from COPS to increase funding for the 2013 Bond Program.

CHARLOTTE-MECKLENBURG BOARD OF EDUCATION
2017 BOND SERIES-CAPITAL IMPROVEMENT PROGRAM
BUDGET STATUS REPORT

	Original Project Budget	Current Project Budget	Committed Amount	Approved Change Orders	Total Committed	Pending Commitments	To Be Committed	Prev Paid To Date	Paid To Date	Balance To Complete	Monthly Expenditure
	(A)	(B)	(C)	(D)	(E)=C+D	(F)	(G)=(B-E-F)	(H)	(I)	(J)=(B-I)	(K)=(I-H)
<u>A. REPLACEMENT & RENOVATIONS</u>											
1 Briarwood Elementary *	\$29,091,619	\$31,762,730	\$4,768,837	\$26,609,642	\$31,378,479	\$172,381	\$211,870	\$28,978,210	\$29,382,039	\$2,380,691	\$403,829
2 Bruns Academy Replacement	\$34,207,808	\$39,784,927	\$3,639,167	\$218,050	\$3,857,217	\$0	\$35,927,711	\$0	\$0	\$39,784,927	\$0
3 Career & Technology Education Upgrades	\$10,101,734	\$10,159,765	\$2,333,694	\$4,099,152	\$6,432,846	\$77,334	\$3,649,585	\$4,459,565	\$4,694,053	\$5,465,712	\$234,488
4 Collinswood K-8 *	\$44,172,540	\$41,422,560	\$4,927,491	\$36,495,069	\$41,422,560	\$0	\$0	\$41,384,602	\$41,384,602	\$37,958	\$0
5 East Mecklenburg HS	\$12,771,594	\$13,858,594	\$1,828,946	\$11,825,297	\$13,654,243	\$20,643	\$183,708	\$7,542,675	\$8,570,986	\$5,287,608	\$1,028,310
6 Garinger HS	\$13,936,979	\$5,986,979	\$1,605,095	\$3,475,359	\$5,080,454	\$6,518	\$900,007	\$2,016,829	\$2,017,829	\$3,969,150	\$1,000
7 Harding University High *	\$18,330,263	\$13,747,878	\$2,045,267	\$11,702,610	\$13,747,877	\$0	\$0	\$13,747,877	\$13,747,877	\$0	\$0
8 Charlotte-Mecklenburg Academy (FKA -EC Specialty	\$18,957,960	\$17,699,220	\$2,175,504	\$15,523,717	\$17,699,220	\$0	\$0	\$17,699,220	\$17,699,220	\$0	\$0
9 Lansdowne Elementary	\$29,391,270	\$34,078,834	\$4,090,630	\$29,467,186	\$33,557,816	\$80,832	\$440,186	\$19,553,427	\$21,171,715	\$12,907,119	\$1,618,288
10 Lincoln Heights Elementary	\$3,740,478	\$4,588,675	\$577,649	\$49,054	\$626,703	\$0	\$3,961,972	\$383,738	\$383,738	\$4,204,937	\$0
11 Montclair Elementary Replacement *	\$28,559,390	\$28,559,390	\$2,426,761	\$25,948,952	\$28,375,714	\$0	\$183,676	\$28,117,460	\$28,168,226	\$391,164	\$50,765
12 Mountain Island k-8	\$9,218,439	\$10,488,400	\$1,296,225	\$16,430	\$1,312,655	\$0	\$9,175,745	\$375,888	\$463,701	\$10,024,699	\$87,812
13 Northwest School of the Arts	\$17,632,202	\$20,467,000	\$949,866	\$117,644	\$1,067,510	\$0	\$19,399,490	\$0	\$0	\$20,467,000	\$0
14 Shamrock Gardens Elementary *	\$29,890,351	\$31,358,351	\$3,686,363	\$27,153,983	\$30,840,346	\$29,989	\$488,016	\$18,869,988	\$18,904,840	\$12,453,511	\$34,852
15 Sharon Elementary	\$7,706,528	\$9,125,862	\$1,443,456	\$7,666,984	\$9,110,441	\$0	\$15,421	\$8,675,068	\$8,994,962	\$130,900	\$319,894
16 South Mecklenburg HS	\$13,352,143	\$15,622,927	\$676,610	\$94,238	\$770,848	\$0	\$14,852,079	\$2,834	\$2,834	\$15,620,093	\$0
17 E.E. Waddell Magnet HS	\$4,571,709	\$5,137,367	\$347,863	\$0	\$347,863	\$0	\$4,789,504	\$99,041	\$99,717	\$5,037,650	\$677
18 West Charlotte HS Replacement	\$109,977,166	\$105,977,166	\$12,153,688	\$91,395,330	\$103,549,018	\$201,950	\$2,226,198	\$69,510,862	\$71,849,492	\$34,127,674	\$2,338,630
19 West Mecklenburg HS	\$11,065,440	\$10,450,902	\$1,607,809	\$8,670,708	\$10,278,517	\$0	\$172,385	\$9,103,126	\$10,111,828	\$339,074	\$1,008,701
20 John Taylor Williams	\$13,964,339	\$15,732,600	\$2,005,781	\$21,670	\$2,027,451	\$0	\$13,705,149	\$455,708	\$511,696	\$15,220,904	\$55,988
Total Replacement & Renovations	\$460,639,952	\$466,010,127	\$54,586,702	\$300,551,075	\$355,137,777	\$589,647	\$110,282,704	\$270,976,120	\$278,159,355	\$187,850,772	\$7,183,235
<u>B. RESPONSE TO ENROLLMENT GROWTH</u>											
1 South Academy of International Languages	\$45,359,367	\$41,209,367	\$6,029,960	\$35,050,079	\$41,080,039	\$0	\$129,328	\$40,369,942	\$40,463,885	\$745,482	\$93,943
2 North Academy of World Languages (FKA - New K-8	\$45,359,367	\$42,359,367	\$6,022,055	\$35,999,788	\$42,021,844	\$0	\$337,523	\$41,789,276	\$41,545,224	\$814,143	(\$244,052)
3 South Pine Academy (FKA - New ES Nations Ford, S	\$29,173,829	\$31,272,550	\$6,806,186	\$24,215,688	\$31,021,874	\$0	\$250,676	\$30,054,379	\$30,074,973	\$1,197,577	\$20,593
4 New Elementary School - Bain/Lebanon Relief	\$29,988,332	\$30,455,951	\$3,545,230	\$26,554,941	\$30,100,172	\$46,786	\$308,994	\$13,341,843	\$15,322,425	\$15,133,526	\$1,980,582
5 New Elementary School - Windsor Park Relief *	\$30,422,230	\$42,697,022	\$4,742,273	\$5,449,264	\$10,191,537	\$0	\$32,505,485	\$2,461,524	\$2,653,523	\$40,043,499	\$191,999
6 New Elementary School - Elon/Hawk Ridge Relief *	\$30,426,712	\$50,856,962	\$14,209,609	\$5,432,057	\$19,641,667	\$350,000	\$30,865,295	\$11,878,458	\$11,967,463	\$38,889,499	\$89,005
7 New Elementary School - Hidden Valley Relief	\$30,518,345	\$40,197,022	\$4,159,006	\$5,867,040	\$10,026,046	\$0	\$30,170,976	\$2,152,691	\$2,264,407	\$37,932,615	\$111,716
8 Palisades High School	\$109,908,793	\$108,908,793	\$11,272,861	\$97,051,295	\$108,324,157	\$225,521	\$359,115	\$79,310,616	\$82,584,777	\$26,324,016	\$3,274,161
9 New High School - South Meck/Ardrey Kell Relief *	\$110,287,621	\$154,930,460	\$12,424,202	\$892,887	\$13,317,088	\$69,350	\$141,544,022	\$4,406,182	\$4,739,869	\$150,190,591	\$333,688
Total Response to Enrollment Growth	\$461,444,596	\$542,887,493	\$69,211,382	\$236,513,041	\$305,724,423	\$691,657	\$236,471,413	\$225,764,912	\$231,616,547	\$311,270,946	\$5,851,635
<u>C. CONTINGENCY</u>											
	\$0	\$10,382,365	\$0	\$0	\$0	\$0	\$10,382,365	\$0	\$0	\$10,382,365	\$0
Total Contingency	\$0	\$10,382,365	\$0	\$0	\$0	\$0	\$10,382,365	\$0	\$0	\$10,382,365	\$0

CHARLOTTE-MECKLENBURG BOARD OF EDUCATION
2017 BOND SERIES-CAPITAL IMPROVEMENT PROGRAM
BUDGET STATUS REPORT

	Original Project Budget	Current Project Budget	Committed Amount	Approved Change Orders	Total Committed	Pending Commitments	To Be Committed	Prev Paid To Date	Paid To Date	Balance To Complete	Monthly Expenditure
	(A)	(B)	(C)	(D)	(E)=C+D	(F)	(G)=(B-E-F)	(H)	(I)	(J)=(B-I)	(K)=(I-H)
TOTAL LOCAL BOND PROGRAM	\$922,084,548	\$1,019,279,985	\$123,798,084	\$537,064,115	\$660,862,200	\$1,281,304	\$357,136,482	\$496,741,032	\$509,775,902	\$509,504,084	\$13,034,870

Original project estimated costs approved by the Board Of Education on July 25, 2017 approved by the voters of Mecklenburg County on November 7, 2017.

*Project included in \$33.2M early funding approved by Board Of Education on August 9, 2016 and Mecklenburg Board of County Commissioners on September 6, 2016. On February 19, 2019 an additional \$8M was approved for New Elementary School - Elon/Hawk Ridge Relief site.

*Current Budget includes an additional \$89.2M to fund increase land and construction costs. The additional funds were approved by the Board of County Commissioners on June 16, 2020.

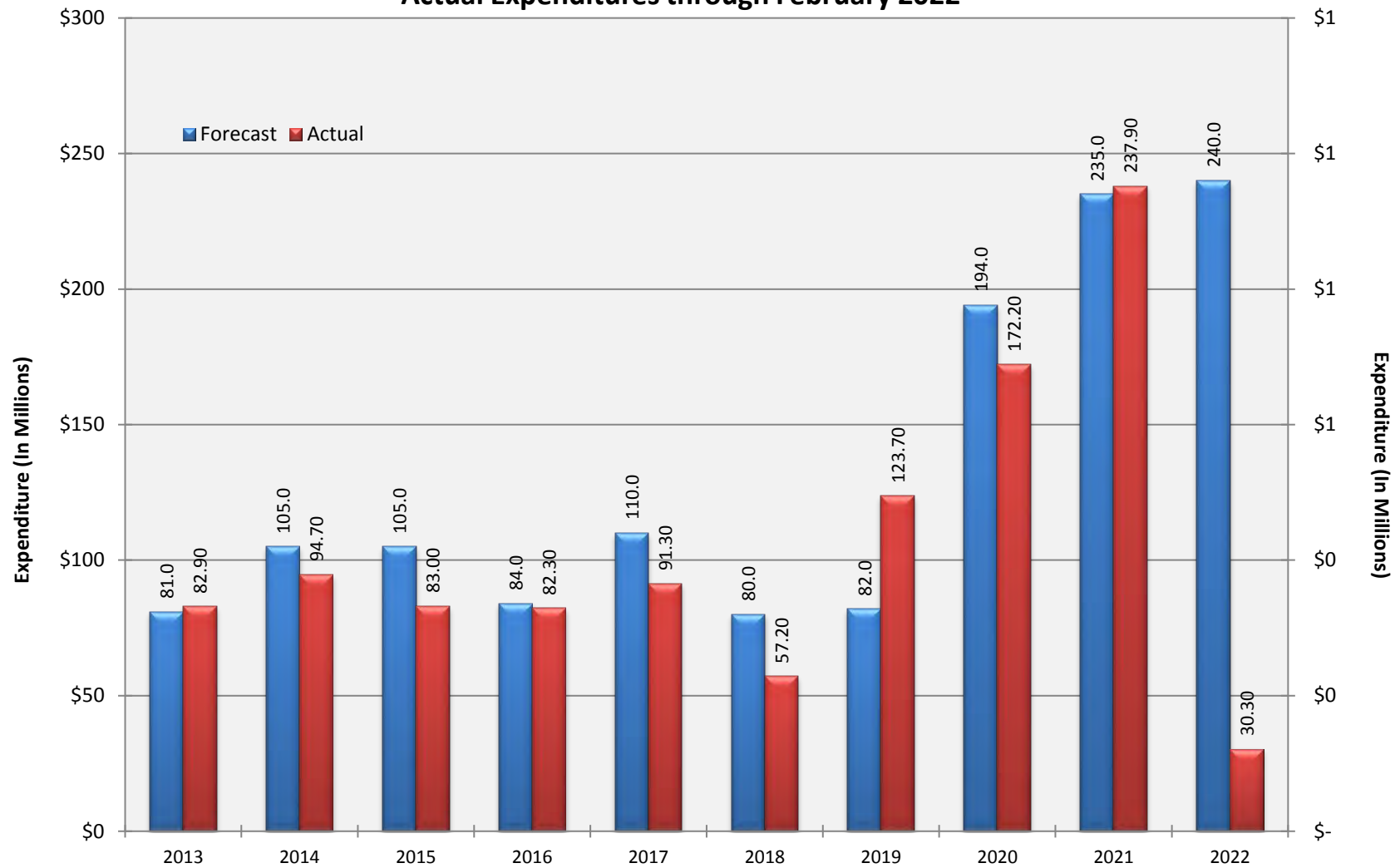
Charlotte-Mecklenburg Board of Education
Approved Construction or Repair Change Orders*
Reporting Period: February 2022

Funding Source	Project Name	Contractor	Description	Change Order Amount	Revised Contract Value
2017 Bond	South Academy of International Languages (fka New K-8 School (South) (17)	Messer Construction Company	Final Contract / Allowance Reconciliation Closeout	(\$623,661.64)	\$34,826,771.70

* Not previously presented to the Board of Education for Approval (less than \$90,000)

10 YEAR EXPENDITURE SUMMARY

Forecast Expenditure versus
Actual Expenditures through February 2022



GLOSSARY

Glossary

- **Project Management** – This section includes updates from our project managers and describes the currently active construction projects. This includes from Board of Education award thru final completion.
- **Design and Bidding** – This section contains updates from our design managers on the projects currently in the design phase. This phase from design award to Board of Education award of construction.
- **Controls** – Section includes misc. updates from controls group including expenditures, related Board of Education awards during the reporting period, cash flow information. This section covers all projects from approved bond through final expenditures and bond close with the county.
- **MWSBE** – Contains updates from the MWSBE Director and team, including current activity and summaries of the participation by MWSBE providers on our program.
- **Bond Progress Summary** – Provides a summary of bond financials including bond value, committed/pending amounts, paid to date, expended this month.
- **Project Procurement Dates** - Next 90 Days major project bid activity.
- **Mobile Swing Space Utilization** – Includes a summary of program related swing space currently in use and the schedule of use.
- **Bond Summary Schedule** – Current program summary schedule including planned design, construction and FF&E. These activities are fed from detailed schedules and are fine-tuned as project information is available.
- **Project Contractor Teams**; Provides summary of turnover dates for completed/closed projects since 2010 including architects/designers and contractors.
- **School Site Location Maps** – General location of bond projects (2017) by type.
- **Project Status Report** – This section of the report provides a summary of the bond project scope, current estimate (all sources), planned occupancy/actual occupancy date. It also provides a current status of the design phase, construction progress and a brief update. The report currently includes 2013 and 2017 bond projects that have or will be completed after to August 2016.
- **MWSBE Participation Report** – The MWSBE report provides a summary of the participation on the 2013 & 2017 Bond funded projects.
- **Project Progress Photos** – Includes photos of active construction projects.
- **Budget Summary Reports** – These reports are by funding source and summarize financial activity to date on the projects. This includes original and current project estimates, committed values, amounts paid to date, balances and monthly expenditures.
- **Change Orders < \$90,000** – This month's approved construction or repair change orders < \$90,000.
- **Expenditure Summary** – Provides a summary of Bond Expenditures by calendar year.