

# Capital Improvement Program

Monthly Bond Report  
January 2022



New Elementary School Bain, Lebanon, Piney Grove Relief



## **CAPITAL PROGRAM SERVICES** Capital Improvement Program

### **JANUARY 2022** MONTHLY BOND REPORT

#### **PROGRAM OVERVIEW**

- Project Management
- Design and Bidding
- Controls
- MWSBE
- Bond Progress Summary
- Project Procurement - Next 90 Days
- Swing Space Utilization
- Bond Summary Schedule
- Project Contractor Teams; Projects in Design/Construction and Substantially Completed/Closed
- School Site Location Maps
  - Elementary Schools
  - Middle Schools
  - High Schools & Specialty Schools

#### **PROJECT STATUS REPORT**

#### **MWSBE PARTICIPATION REPORT**

#### **PROJECT PROGRESS PHOTOS**

#### **PROJECT CONTROLS**

- Budget Summary Reports
  - 2013 Bond Series
  - 2017 Bond Series
- Change Orders < \$90,000
- Expenditure Summary

#### **GLOSSARY**

# PROGRAM OVERVIEW

---

## PROJECT MANAGEMENT

The following is a summary of the activity on the bond funded projects in construction during the month of January.

The construction manager for **Briarwood Elementary Replacement School** installed the asphalt in the staff and bus parking lots along with the striping. The entire site has been fine graded in preparation for sod and grass seed installation next month. Bushes and trees are being installed along with permanent fencing around the pond. The marquee sign and light poles have been installed. The remaining work is scheduled to be completed next month with punch list completion in March.

The **CTE projects at Harding and South Mecklenburg** have completed the construction renovations. The contractor is still working on punch list items and a few material issues that required substitute equipment. The South Mecklenburg culinary kitchen is now open to students and staff. The project at South Mecklenburg renovated the old kitchen area into a culinary arts lab and classroom. The Harding project still has the temporary construction partition walls in place. The CTE department is working through delays with the FF&E that is planned for use in the new Harding suite. The Harding project renovated the existing classrooms in the auditorium building to develop a suite of technology classrooms.

The construction manager for **East Mecklenburg High School** has achieved temporary building dry-in. The brick veneer is complete and windows are being installed. The interior finishes including drywall and prime paint are progressing. The mechanical, electrical and plumbing (MEP) trades continue rough-in as metal stud frame walls are completed. The above ceiling work includes the installation of fire sprinkler piping. The new classroom wing is scheduled for occupancy in August 2022.

The **Garinger Addition and Renovation** construction manager continued with interior and exterior activities. The exterior masonry veneer is nearing completion and will be followed by the insulated metal panels and window system. Duke Energy set the transformer which will provide temporary permanent power while the electrical rooms are completed. Installation of hydronic piping and equipment continued in the mechanical rooms. Installation of drywall on the first floor was completed allowing prime painting to begin. The second floor overhead MEP work and metal studs were completed. The addition is scheduled to be occupied August 2022 and the renovations to start summer of 2022 and be occupied January 2023.

The **Lansdowne Elementary School** construction manager is finishing the final elevation of brick veneer this month. The roof is now dried-in and temporary plastic sheathing is installed at window openings. Window frames have started in the classroom wing. Temporary heat is being provided to allow finishes including drywall mud and prime paint to begin. The kitchen walk-in cooler/freezer are installed and the kitchen hood is in place. The recent wet weather has hampered site work and hardscapes. Occupancy of the replacement school is scheduled for August 2022. Upon completion of the new building, demolition and remaining site work will commence and be completed in 2023.

The **New Elementary School (Bain, Lebanon, Piney Grove Relief)** construction manager is nearing completion of the brick veneer. The roof has been installed on the building and windows have been temporarily covered with plastic sheathing allowing finishes to progress. The metal stud framing for interior walls is complete on the second floor classroom wing allowing MEP rough-ins to progress and above ceiling fire sprinkler piping. The site contractor continues to monitor and maintain the erosion control. The team has also received a preliminary design to review for the required signal at the school entrance. This new 45-classroom school will be located next to the existing Mint Hill Middle School. The project is scheduled for occupancy in August 2022.

The construction manager for the **New High School Olympic Relief** continued coordinating the construction activities on the site. Many exterior activities continued with metal wall panels, sidewalks, landscaping, brick

cleaning and general clean up. The stadium synthetic turf was installed and the track surface was prepared to receive the surface coat. The field house continued with ceilings, paint and final MEP connections. The ceiling tile, flooring, doors, hardware and miscellaneous specialties are being installed in the two-story classroom wing. The three-story classroom wing had cabinets, marker boards and plumbing fixtures installed. Carpet, cabinets, finish paint and media center shelving were installed in the administration building. The acoustical drywall ceiling was completed in the auditorium allowing the theatrical lighting to be installed and the masonry walls to be finalized. The wood floor is installed in the main gym and auxiliary gym and the bleachers will be released for installation early February. The 100-classroom relief high school is scheduled to be occupied in August 2022.

The **Shamrock Gardens Elementary School** construction manager completed several activities in January. The final connections to the storm system began with the roof leaders being tied into the system. Preparations were made for final grading around the building to begin sidewalks once the exterior veneer is complete. Overhead MEP continued in the classroom building. Casework, flooring and ceiling tiles started in the art, music and media center. The kitchen freezer and cooler started installation along with the quarry tile. The elevator contractor mobilized and began installations. The new 45-classroom replacement elementary school is scheduled to be occupied August 2022.

The trade contractors continue to work throughout the **West Charlotte High School** facility. The interior finishes have progressed in many areas including setting equipment and finish painting. Mechanical, electrical and plumbing trade partners have also installed finishes and fixtures. The gymnasium has progressed with bleachers and finish paint including accent walls. The VCT and carpet have started in some areas. The lights are installed in the lay-in ceiling throughout. The science casework is progressing and has completed in some classrooms. The stadium improvements including the field house and concession stands are nearing completion. The new bus lot base layer of asphalt is in place. The project is scheduled to be occupied August 2022. Once the new school is occupied the existing school will be demolished and final site work will take place with final project completion in August 2023.

## DESIGN AND BIDDING

The following is a summary of the activity on the bond funded projects in design and bidding phase during the month of January.

The **E.E. Waddell High School** project continues to progress in the building permit approval process. The project is preparing for bidding activities and is scheduled to receive lump sum bids in February. The project consists of light renovations to the existing science classrooms, maker space, lobby, HVAC work, limited VCT and acoustical ceilings. This project is scheduled to start construction in spring 2022.

The **JT Williams Secondary Montessori** project continues to progress in the construction document phase. The project's base scope focuses on required civil improvements, architectural and MEP renovations in the 100 and 200 buildings. The renovations to the remaining campus buildings mechanical and classroom lighting systems are being designed and will be bid as alternates. A 10-classroom modular will be used for swing and future space at the school site. Continuing development of the phasing plan and schedule are under way. Project construction is scheduled to be completed in August 2024.

The **Mountain Island Lake Academy** project's construction document submittal was received for review and comments. The early steel and roof procurement package bids have been received and are being analyzed by the construction manager. The remaining scopes of work are scheduled for bid and award in late spring 2022. The project consists of a building addition containing a middle school gymnasium and visual and performing arts classrooms. Construction is scheduled to start in the spring 2022 and the project is scheduled to be completed August 2023.

The **New Bruns Avenue Elementary (Replacement)** has kicked off the design with the architect. The pre-design submittal is scheduled to be received in February. This new 45-classroom school facility is scheduled for occupancy August 2024.

The **New Elementary School (Elon, Hawk Ridge, Polo Relief)** project continues its review for building permit approval with LUESA. The NCDOT/CDOT traffic study has been approved. The team has completed documents for the rezoning process which will be reviewed in February. The construction manager has begun the procurement phase of the project; bids are due to be received in February. Construction is scheduled to start in the spring of 2022 and be completed August 2023. This new 45-classroom school will be located across from Ardrey Kell High School.

The **New Elementary School (Hidden Valley, JW Grier, Newell Relief)** architect has completed incorporating review comments and has submitted for building permit approval to LUESA. The construction manager has begun the procurement phase of the project; bids are due to be received in February. This new 45-classroom school will be located next to Northridge Middle School and is scheduled for occupancy August 2023.

The **New Elementary School (Windsor, Winterfield, Idlewild Relief)** project has completed the review of the architect's construction document submittal; comments have been returned and are being incorporated into the design and the traffic engineer's memorandum has been issued to CDOT for review and comments. The project's remaining bid packages are scheduled for bid in spring 2022. This new 45-classroom school facility is scheduled for occupancy August 2023.

The **New High School (South, Ardrey Kell Relief)** project continues its review for building permit approval with LUESA. The construction manager has issued bid documents to qualified bidders and will receive bids in February. The team has completed documents for the rezoning process which will be reviewed in February. This project consists of a new 100-classroom high school with athletic play fields and stadium. Construction is scheduled to start in the spring 2022 and the project is scheduled to be completed August 2024.

## CONTROLS

Expenditures for the month of January were \$17.2M. This brings our fiscal year to date total to \$128.6M against the 2022 fiscal year cash flow projection of \$260M. The Controls team provided a quarterly update to Mecklenburg County for the 2013 and 2017 Bond Programs. The update included the status of projects and cash flow projection. Additionally, the Controls appropriated budgets to procure furniture, fixtures and equipment for project coming online this fiscal year. The process of reconciling and closeout of completed 2013 and 2017 bond projects continues. Available funding is being accumulated to address potential supply chain and increased construction costs related to the COVID-19 pandemic.

The Controls team continues to submit notices of potential changes at school sites so senior staff can adequately evaluate issues. Additionally, the Controls team continues the processing of contracts, invoices, preparing notices of potential change, change orders, pay applications, and check requests for projects under construction. Captured construction cost data is used to prepare financial reports such as detailed cost reports, budget summaries, reconciliation to CMS books, revisions to and updated cash flows and complete special financial requests by CMS and Mecklenburg County. This process, along with data compilation and management, allows senior staff to provide the proper guidance/direction and accurate information to the program stakeholders.

No Bond related consent items were submitted for Board of Education approval during the month of January 2021.



## MWSBE

As of January 2022 the overall MWSBE utilization percentage related to design and construction of the 2017 bond projects is 49.39% which includes 21.06% participation by minority contractors, 27.43% by women contractors and 0.90% participation by small business contractors. This accounts for more than \$285 million of utilization by Minority, Women and Small Business Contractors.

The Diversity & Inclusion Office of Charlotte-Mecklenburg Schools continued to conduct several individual virtual orientations with new MWSBE contractors and prime contractors. In addition, team members also attended/hosted the following outreach sessions/pre-bid meetings and/or workforce development opportunities:

### Outreach Sessions:

- Ardrey Kell High School pre-bid hosted by Messer Construction
- Hidden Valley, JW Grier and Newell Relief pre-bid hosted by Edifice
- American Contract Compliance Association National Training Institute Planning meetings

### Workforce Development: Community Partner Spotlight

*She Built This City* (SBTC) is the newest added CMS workforce development community partner. The organization's primary goal is to create more pathways for women in construction and manufacturing industry. Program offerings include:

*Free 16 Week Pre-Apprenticeship Electrician Training* - Successful completion of this program will prepare the participants to submit an application to be enrolled in the Carolina Electrical Training Institute (CETI) electrician apprenticeship training program. Applicants not accepted into CETI are encouraged to apply to other electrician apprenticeship programs or directly to companies that employ electricians. SBTC will support the job application process.

The program will cover an introduction to:

- Policies, program and training expectations of an apprenticeship study program
- Professional relationships, communication and conflict resolution practices
- Financial literacy to establish productive, personal financial practices
- Safety in construction, OSHA 10 and First Aid/CPR certifications
- Customer service and technology training
- Hand, power tools and measurements
- Learn about electricity laws, devices and techniques
- Visit active job sites where electricians are working

There is only capacity for 10 adults per class and held at Southside Homes Community Room.

*Plumbing Pre-Apprenticeship* - In conjunction with Moen, Three Way Plumbing and Lowe's, SBTC hosts an all woman 15 week, hands-on learning, pre-apprenticeship at their Innovation Alley workshop in West Charlotte. In addition to hands-on instruction from industry veterans, site visits and guest speakers, all training participants will receive a weekly travel stipend, school age child supervision and job placement support.

*Women's Repair Crew* - Using virtual curriculum from Tradeskills U and hands-on learning experiences from SBTC core curriculum, participants gain industry basic knowledge and real world experience through handy.com services. Under the guidance of an experienced work crew leader, they explore "handywoman" basics of plumbing, fixture installs, painting and other key areas that have seen a boom in this post-Pandemic society. Participants will then be able to choose if/where they would like to specialize in two specific pathways: pursuing continued education with

---

paid learning opportunities through formal apprenticeship placement or support in entrepreneurial efforts to continue as independent contractors under the handy.com platform. Their curriculum incorporates Soft Skills as well as Grow With Google Business training to prepare participants for effective business practices with a focus on entrepreneurship with specific focus on resources for minority and women owned businesses.

For more information about the programs visit: [www.shebuiltthiscity.org](http://www.shebuiltthiscity.org).

Over the next month, team members will continue to work with contractors interested in bidding on the upcoming school projects utilizing various virtual tools to communicate. Contractors are encouraged to review bid advertisements in Charlotte Observer and register as a vendor on the North Carolina Interactive Purchasing System for notification of the various opportunities.



## BOND PROGRESS SUMMARY As of January 2022

Funding Source and Value		Amount Committed/Pending	Amount Paid to Date	Amount Expended This Period
2013 Bond	\$301,699,770	\$300,465,943	\$292,487,855	<b>\$1,633,111</b>
2017 Bond	\$1,019,279,985	\$661,511,007	\$496,741,032	<b>\$15,576,845</b>
<b>Grand Total</b>	<b>\$1,320,979,755</b>	<b>\$961,976,950</b>	<b>\$789,228,887</b>	<b>\$17,209,956</b>

---

## UPCOMING MAJOR CONSTRUCTION PROCUREMENT DATES *Three Month Look Ahead*

<b><u>School Name</u></b>	<b><u>Bid Dates*</u></b>
<b>New Elementary (Hidden Valley, JW Grier, Newell)</b> <i>(Bids managed by CM - Edifice)</i>	February 2022
<b>New Elementary (Elon, Hawk Ridge, Polo Ridge)</b> <i>(Bids managed by CM - Balfour Beatty)</i>	February 2022
<b>New HS (Ardrey Kell, South Mecklenburg)</b> <i>(Bids managed by CM - Messer)</i>	February 2022
<b>E.E. Waddell</b> <i>(Bids managed by Architect, Moseley)</i>	February 2022

\* NOTE: *Work In Progress...Dates Subject to Change.*

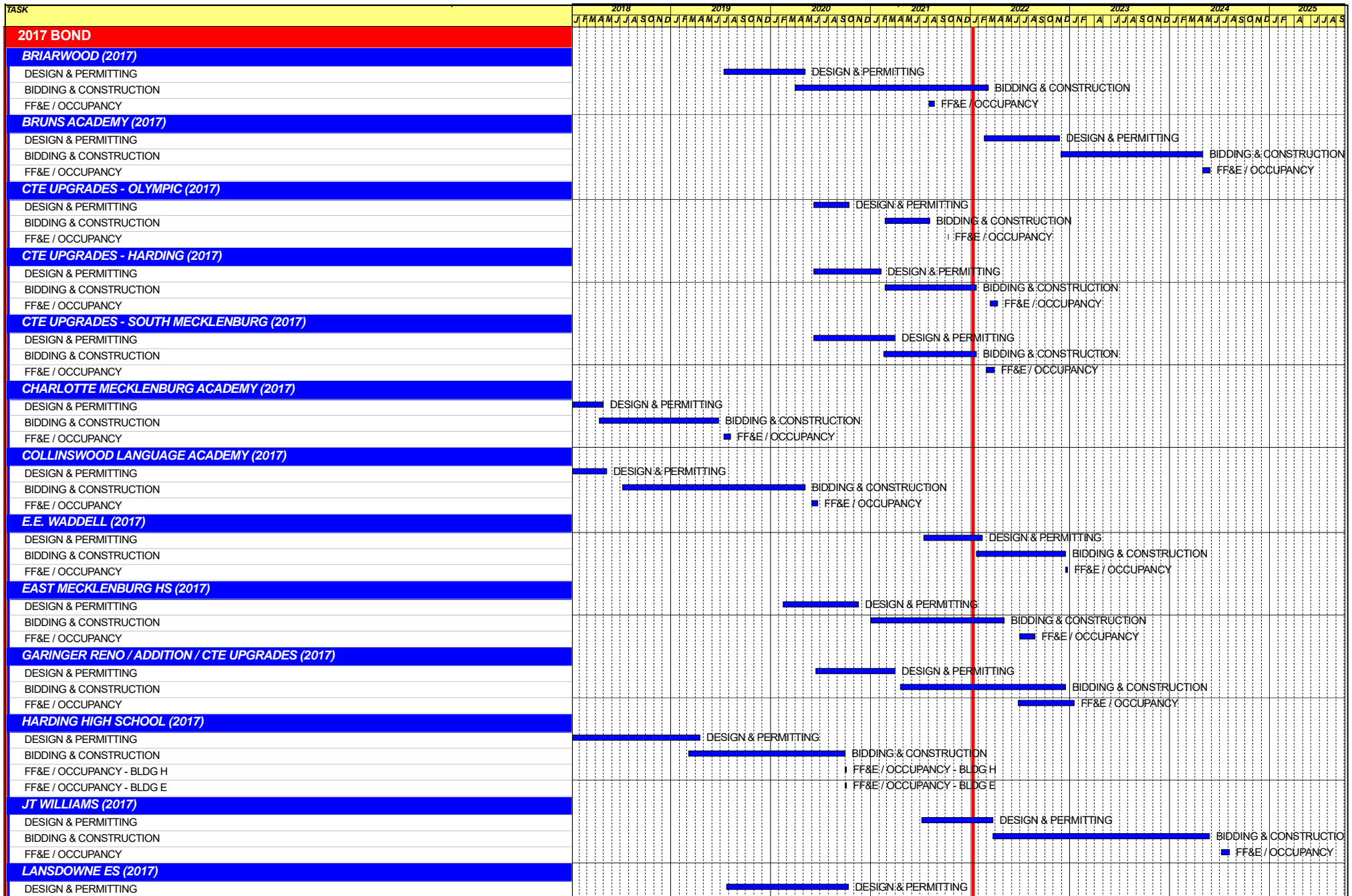
---

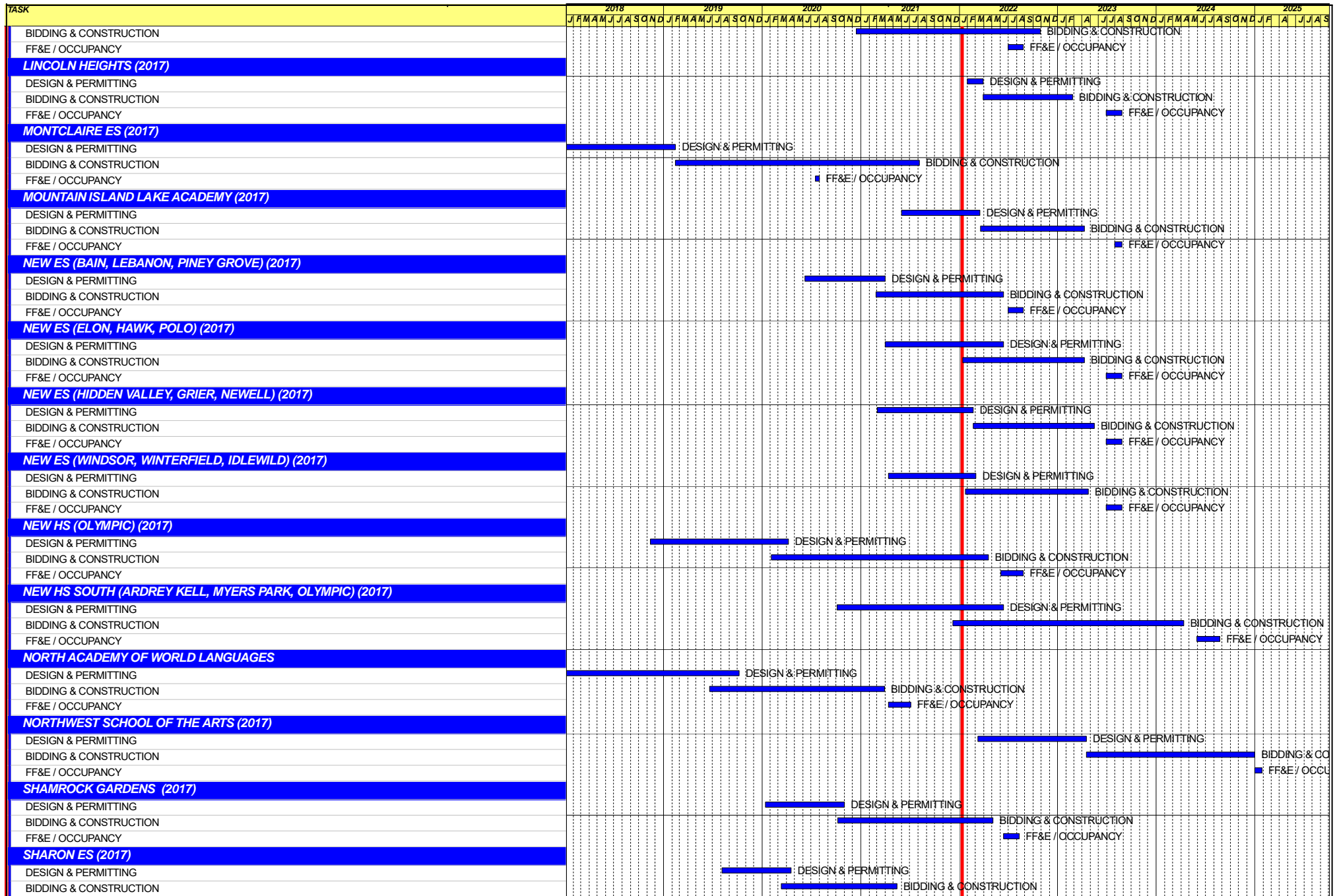
## SWING SPACE UTILIZATION

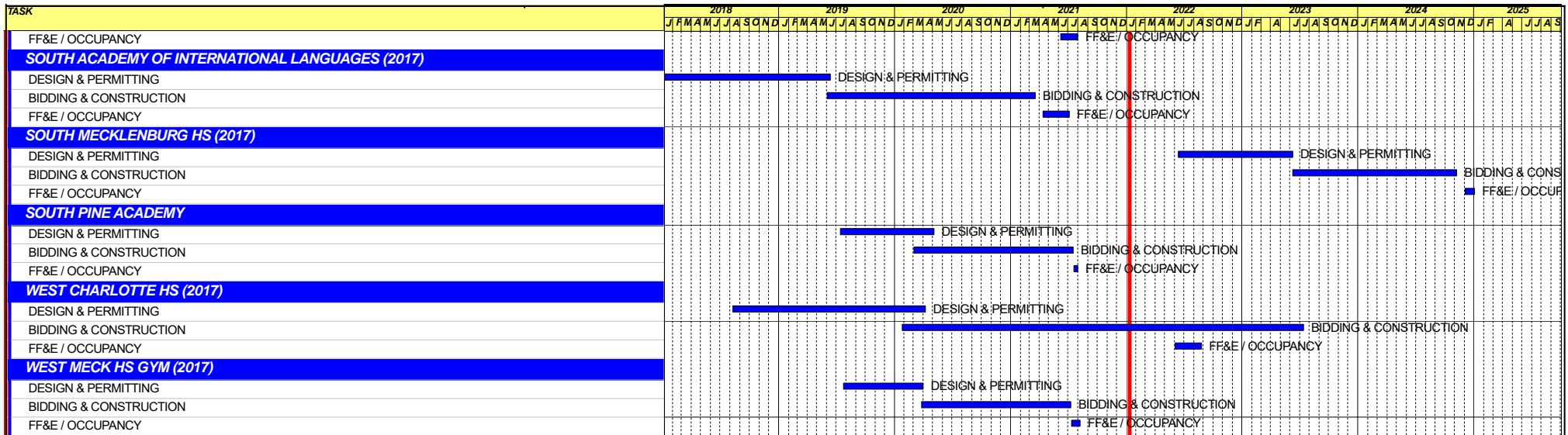
Creating a temporary space for students and staff to occupy during construction on a school’s campus has proven to be beneficial to the project’s schedule and cost and overall safety and efficiency of school operations. When the renovation or expansion of a facility is performed and the facility must remain functionally operational, there are benefits to the owner in using swing space.

We have successfully utilized both onsite and offsite swings. The most desirable swings are “offsite” ones. Onsite swing using mobiles or modulars, likewise has been successfully used. The following is a summary of current swing options planned or in use.

<u>School</u>	<u>No. of Mobiles/Relocation Site</u>	<u>Status (From – To)</u>
Shamrock	Lincoln Heights	August 2020 – August 2022







Capital Improvements Program  
***Projects in Design or Under Construction***

School	Architect	General Contractor/CM
Projects In Design		
E.E. Waddell (17)	Moseley	TBD
J.T. Williams (17)	FWA	New Atlantic
Lincoln Heights Repurpose (17)	Neighboring Concepts	TBD
Mountain Island School (17)	ADW	Whiting-Turner
New Bruns Avenue ES	ADW	Edifice, Inc.
New ES (Elon,Hawk Ridge, Polo Ridge) (17)	Little Diversified	Balfour Beatty
New ES (Hidden Valley, JW Grier, Newell) (17)	ADW	Edifice, Inc.
New ES (Windsor, Winterfield, Idlewild) (17)	Neighboring Concepts	Rodgers-Holt Brothers
New HS (South, Ardrey) (17)	Ratio	Messer
Projects in Bid/Award/Construction Phase		
CTE (Harding, Olympic, South) (17)	MPS	Branch Brownstone
East Mecklenburg High School (17)	Morris Berg	Turner Construction
Garinger Addition/Renovation & CTE (17)	LS3P	Balfour Beatty
Lansdowne Elementary School Replacement (17)	Perkins Eastman	Edifice, Inc.
New ES (Bain, Lebanon Rd, Piney Grove) (17)	FWA	Metcon
New High School (Olympic Relief) (17)	Little Diversified	Edifice, Inc.
Shamrock Gardens Elementary School Replacement (17)	Little Diversified	Rodgers-Holt Brothers
West Charlotte High School (17)	LS3P	Rodgers-Holt Brothers



Capital Improvements Program  
***Projects Substantially Completed/Closed \****

School	Turnover Year	Architect	General Contractor
Briarwood Elementary School Replacement (17)	Aug-21	ADW	New Atlantic Contracting
Montclair Elementary School (17)	Aug-21	WHN	Messer Construction
North Academy of World Languages (17)	Aug-21	ADW	New Atlantic Contracting
Sharon Elementary School (17)	Aug-21	Clark Nexsen	Samet
South Academy of International Languages (17)	Aug-21	FWA	Messer Construction
South Pine Academy (17)	Aug-21	FWA	Metcon
West Mecklenburg Gym (17)	Aug-21	Moseley	Barnhill/D.A. Everett
Collinswood Language Academy (17)	Aug-20	Perkins Eastman	Turner Construction
Harding High School Renovation (17)	Aug-20	SFLA	Barnhill Contracting
Rea Farms STEAM Academy (13)	Aug-20	Little Diversified	Balfour Beatty
Ashley Park K-8 Conversion (13)	Aug-19	ADW	Turner Construction
Druid Hills K-8 Conversion (13)	Aug-19	ADW	Edifice, Inc.
Selwyn Elementary (13)	Aug-19	Clark Nexsen	Balfour Beatty
Charlotte Mecklenburg Academy (17)	Aug-19	KSQ	Edifice, Inc.
Davidson K-8 (13)	Aug-19	Little Diversified	Gilbane
CTE - North Mecklenburg High (13)	Aug-19	LS3P	Shiel Sexton
CTE - Garinger (13)	Mar-19	LS3P	Hostetter & Son
CTE - Independence (13)	Mar-19	LS3P	D.E. Brown
CTE - West Mecklenburg (13)	Mar-19	LS3P	Hostetter & Son
Charlotte East Language Academy (13)	Aug-18	Morris Berg	Edifice, Inc
Myers Park High School Phase 3 (13)	Aug-18	Boomerang Design	BE&K
Northridge Middle (13)	Aug-18	Morris Berg	Barnhill Contracting
Myers Park High Bldg 2 (13)	Feb-18	Boomerang Design	BE&K
East Mecklenburg High Addition (13)	Jan-18	Bergman (fna Gantt Huberman)	Edifice, Inc.
J.M. Alexander Middle (13)	Aug-17	FWA Group	Balfour Beatty
Northwest School of the Arts Renovation (13)	Aug-17	Moseley	Turner Construction
Renaissance West STEAM Academy (13)	Aug-17	Little Diversified	Rodgers Construction
South Mecklenburg High Addition (13)	Jul-17	SFLA	Barnhill Contracting
Myers Park High Bldg 1 (13)	Sep-16	Boomerang	KBR
Statesville Road Elementary (13)	Aug-16	ADW	JE Dunn
Nations Ford Elementary (13)	Aug-16	Wash Hatem Nelson	Messer Construction
Olympic High Addition (13)	Aug-16	McMillan, Pazdan, Smith	Turner Construction
Lawrence Orr Elementary (07)	Aug-15	Cort Architectural Group	DH Griffin/Metcon
Parkside Elementary (07)	Aug-15	Wash Hatem Nelson	Clancy & Theys
Hawthorne High Renovations (07)	Aug-15	Morris-Berg	Balfour Beatty
Newell Elementary (07)	Aug-15	Perkins Eastman	New Atlantic Contracting
Ranson Middle (07)	Aug-15	Morris-Berg	Edifice, Inc.
Vance High	Jan-15	LS3P	Matthews Construction Co., Inc.
Garinger High - Renovations/Addition	Aug-14	Adams Group Architects	Turner Construction
Olympic High - Stadium	Aug-14	Site Solutions	Turner Construction
West Mecklenburg High - Stadium	Aug-14	Site Solutions	Turner Construction
Collinswood - Indoor Air Quality	Aug-14	PEA	The Bowers Group
Lansdowne - Indoor Air Quality	Aug-14	AeroRaq	Tyler 2
McKee Road - Indoor Air Quality	Aug-14	McCracken & Lopez	Godfrey Construction
Garinger High - Track & Field	Jul-14	Site Solutions	Turner Construction
Independence High - Gym	Jun-14	Shook Kelly	Shelco, Inc. (CM)
Palisades Park Elementary	May-14	Wash Hatem Nelson	Clancy & Theys
East Mecklenburg High Auditorium	Jan-14	Gantt Huberman Associates	Godfrey Construction Co., Inc.
Pineville Elementary	Aug-13	Cort Architectural Group	Beam Construction Co., Inc.
Bain Elementary	Aug-13	ADW	Edison Foard
Grand Oak Elementary	Aug-13	ADW	Matthews Construction Co., Inc.
McClintock Middle	Aug-13	FWA Group	Shelco, Inc.

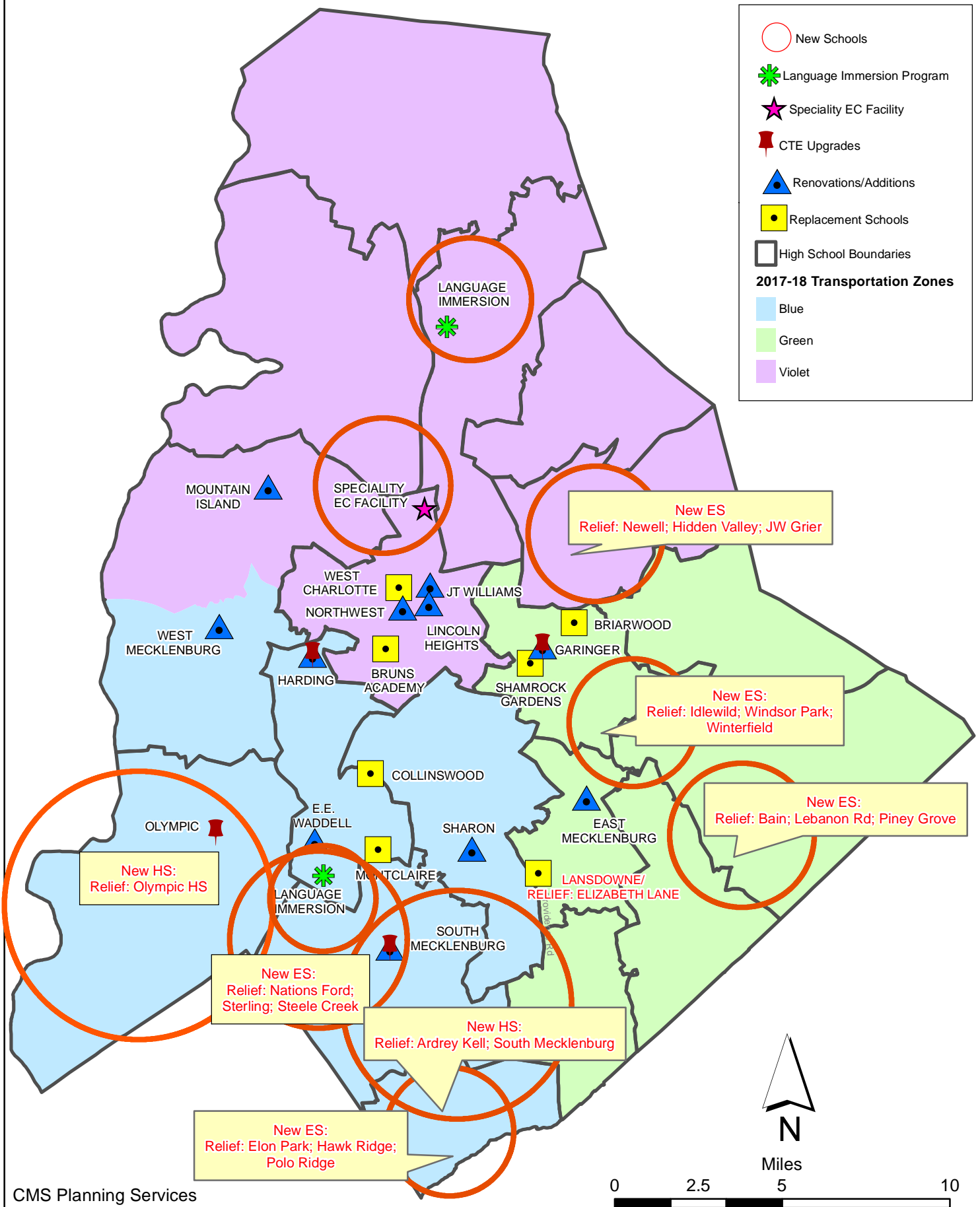
# Capital Improvements Program

## ***Projects Substantially Completed/Closed \****

School	Turnover Year	Architect	General Contractor
Sedgefield Elementary Demolition	Oct-12	Cort Architectural Group	EHG, LLC
Alexander Graham Middle Gym Reno	Aug-12	MBAJ Architecure	Edison Foard
First Ward - Demolition & Bus lot	Aug-12	MBAJ Architecure	T.K. Browne
South Meck High Parking Lot Renovation	Aug-12	Little Diversified	Sorenson Gross
Cochrane Middle - Kitchen	Aug-11	MBAJ Architecure	Sorenson Gross
Hough High	Aug-10	Little Diversified	Rodgers Construction
Rocky River High	Aug-10	Little Diversified	Balfour Beatty

*Projects closed prior to 2010 are not shown*

# CMS Capital Improvement Plan 2017 Bond Projects



# PROJECT STATUS REPORT



## Monthly Project Status 2017 Bond Summary January 2022

Project	Current Project Estimate	Project Scope	** Occupy On	Design Phase	Construction Progress	Project Status
Briarwood Elementary School (17)	\$ 31,962,730	45-classroom replacement facility; replaces school built in 1956.	August 2021	Complete	97 %	The construction manager for Briarwood Elementary Replacement School installed the asphalt in the staff and bus parking lots along with the striping. The entire site has been fine graded in preparation for sod and grass seed installation next month. Bushes and trees are being installed along with permanent fencing around the pond. The marquee sign and light poles have been installed. The remaining work is scheduled to be completed next month with punch list completion in March.
Bruns Academy (17)	\$ 39,784,927	New 45-classroom elementary school (K-5); replaces old school built in 1969.	August 2024	Not Started	0 %	The Bruns Avenue Elementary (Replacement) has kicked off the design with the architect. The pre-design submittal is scheduled to be received in February.
Career and Technology Education (17)	\$ 10,159,765	Phase I CTE upgrades at Olympic, Harding, Garinger and South Mecklenburg.	January 2022	Complete	89 %	The CTE projects at Harding and South Mecklenburg have completed the construction renovations. The contractor is still working on punch list items and a few material issues that required substitute equipment. The South Mecklenburg culinary kitchen is now open to students and staff. The project at South Mecklenburg renovated the old kitchen area into a culinary arts lab and classroom. The Harding project still has the temporary construction partition walls in place. The CTE department is working through delays with the FF&E that is planned for use in the new Harding suite. The Harding project renovated the existing classrooms in the auditorium building to develop a suite of technology classrooms.
Charlotte-Mecklenburg Academy (17)	\$ 17,699,220	New EC school located on the old Statesville Elementary School site.	August 2019	Complete	100 %	Project is complete.

# Monthly Project Status

2017 Bond Summary

January 2022

Project	Current Project Estimate	Project Scope	** Occupy On	Design Phase	Construction Progress	Project Status
Collinswood Language Academy (17)	\$ 41,547,540	New 63-classroom K-8 facility on the site of the Smith Family Center.	August 2020	Complete	100 %	Project is complete.
E.E. Waddell (17)	\$ 5,137,367	Repurpose current E.E. Waddell to reopen as a magnet high school.	August 2023	Construction Documents	0 %	The E.E. Waddell High School project continues to progress in the building permit approval process. The project is preparing for bidding activities and is scheduled to receive lump sum bids in February. The project consists of light renovations to the existing science classrooms, maker space, lobby, HVAC work, limited VCT and acoustical ceilings.
East Mecklenburg High School (17)	\$ 15,058,594	This project will provide for the design, and construction of a new 30 classroom building.	August 2022	Complete	57 %	The construction manager for East Mecklenburg High School has achieved temporary building dry-in. The brick veneer is complete and windows are being installed. The interior finishes including drywall and prime paint are progressing. The mechanical, electrical and plumbing (MEP) trades continue rough-in as metal stud frame walls are completed. The above ceiling work includes the installation of fire sprinkler piping.
Garinger High School (17)	\$ 5,986,979	Project includes the design and construction for renovations of 300 building and a new 16 classroom building.	January 2023	Complete	36 %	The Garinger Addition and Renovation construction manager continued with interior and exterior activities. The exterior masonry veneer is nearing completion and will be followed by the insulated metal panels and window system. Duke Energy set the transformer which will provide temporary permanent power while the electrical rooms are completed. Installation of hydronic piping and equipment continued in the mechanical rooms. Installation of drywall on the first floor was completed allowing prime painting to begin. The second floor overhead MEP work and metal studs were completed.
Harding High School (17)	\$ 13,805,263	Renovation of the kitchen, cafeteria, existing gym (aux) and the addition of a new gym.	August 2020	Complete	100 %	Construction Manager has change items that will be completed summer 2021 and is finalizing financial reconciliation.

# Monthly Project Status

2017 Bond Summary

January 2022

Project	Current Project Estimate	Project Scope	** Occupy On	Design Phase	Construction Progress	Project Status
JT Williams (17)	\$ 15,732,600	Project includes building renovations to J.T. Williams Montessori magnet.	August 2024	Design Development	0 %	The JT Williams Secondary Montessori project continues to progress in the construction document phase. The project's base scope focuses on required civil improvements, architectural and MEP renovations in the 100 and 200 buildings. The renovations to the remaining campus buildings mechanical and classroom lighting systems are being designed and will be bid as alternates. A 10-classroom modular will be used for swing and future space at the school site. Continuing development of the phasing plan and schedule are under way.
Lansdowne Elementary School (17)	\$ 35,378,834	New 45-classroom school; replaces old school built in 1959 and relieve crowding at Elizabeth Lane ES.	August 2022	Complete	60 %	The Lansdowne Elementary School construction manager is finishing the final elevation of brick veneer this month. The roof is now dried-in and temporary plastic sheathing is installed at window openings. Window frames have started in the classroom wing. Temporary heat is being provided to allow finishes including drywall mud and prime paint to begin. The kitchen walk-in cooler/freezer are installed and the kitchen hood is in place. The recent wet weather has hampered site work and hardscapes.
Lincoln Heights Elementary School (17)	\$ 4,588,675	Repurpose and reopen as magnet school.	August 2023	Construction Documents	0 %	Shamrock Gardens will be utilizing the Lincoln Heights Elementary building as swing space August 2020 - August 2022. Playgrounds were replaced and new digital signage was installed summer 2020. Based on Board approval in May 2021 the occupancy date has been moved to 2023.
Montclair Elementary School (17)	\$ 28,559,390	New 45-classroom replacement facility replacing school built in 1958.	August 2020	Complete	99 %	This month the construction manager for the Montclair Elementary School completed the final phase of work on the project. The new 45-classroom elementary school building was occupied in August.



# Monthly Project Status

2017 Bond Summary

January 2022

Project	Current Project Estimate	Project Scope	** Occupy On	Design Phase	Construction Progress	Project Status
Mountain Island Lake Academy (17)	\$ 10,488,400	K-8 Phase 2 - New gymnasium and specialty classrooms.	August 2023	Construction Documents	0 %	The Mountain Island Lake Academy project's construction document submittal was received for review and comments. The early steel and roof procurement package bids have been received and are being analyzed by the construction manager. The remaining scopes of work are scheduled for bid and award in late spring 2022. The project consists of a building addition containing a middle school gymnasium and visual and performing arts classrooms.
New Elementary School (Bain, Lebanon, Piney Grove) (17)	\$ 30,455,951	New 45-classroom elementary school; relieves crowding at Bain, Lebanon Road, Piney Grove.	August 2022	Complete	48 %	The New Elementary School (Bain, Lebanon, Piney Grove Relief) construction manager is nearing completion of the brick veneer. The roof has been installed on the building and windows have been temporarily covered with plastic sheathing allowing finishes to progress. The metal stud framing for interior walls is complete on the second floor classroom wing allowing MEP rough-ins to progress and above ceiling fire sprinkler piping. The site contractor continues to monitor and maintain the erosion control. The team has also received a preliminary design to review for the required signal at the school entrance.
New Elementary School (Elon, Hawk Ridge, Polo Relief) (17)	\$ 50,856,961	New 45-classroom elementary school to relieve Elon, Hawk Ridge, Polo.	August 2023	Construction Documents	0 %	The New Elementary School (Elon, Hawk Ridge, Polo Relief) project continues its review for building permit approval with LUESA. The NCDOT/CDOT traffic study has been approved. The team has completed documents for the rezoning process which will be reviewed in February. The construction manager has begun the procurement phase of the project; bids are due to be received in February.
New Elementary School (Hidden Valley, JW Grier, Newell) (17)	\$ 40,197,022	New 45-classroom elementary school; relieves overcrowding at Hidden Valley, J.W. Grier, Newell.	August 2023	Construction Documents	0 %	The New Elementary School (Hidden Valley, JW Grier, Newell Relief) architect has completed incorporating review comments and has submitted for building permit approval to LUESA. The construction manager has begun the procurement phase of the project; bids are due to be received in February.

# Monthly Project Status

2017 Bond Summary

January 2022

Project	Current Project Estimate	Project Scope	** Occupy On	Design Phase	Construction Progress	Project Status
New Elementary School (Windsor, Winterfield, Idlewild Relief) (17)	\$ 42,697,022	New 45-classroom elementary school to relieve Windsor, Winterfield, and Idlewild ES.	August 2023	Construction Documents	0 %	The New Elementary School (Windsor, Winterfield, Idlewild Relief) project has completed the review of the architect's construction document submittal; comments have been returned and are being incorporated into the design and the traffic engineer's memorandum has been issued to CDOT for review and comments. The project's remaining bid packages are scheduled for bid in spring 2022.
New High School (17) (Olympic Relief)	\$ 109,908,793	New 100 classroom high school; relieves crowding at Olympic High School.	August 2022	Complete	88 %	The construction manager for the New High School Olympic Relief continued coordinating the construction activities on the site. Many exterior activities continued with metal wall panels, sidewalks, landscaping, brick cleaning and general clean up. The stadium synthetic turf was installed and the track surface was prepared to receive the surface coat. The field house continued with ceilings, paint and final MEP connections. The ceiling tile, flooring, doors, hardware and miscellaneous specialties are being installed in the two-story classroom wing. The three-story classroom wing had cabinets, marker boards and plumbing fixtures installed. Carpet, cabinets, finish paint and media center shelving were installed in the administration building. The acoustical drywall ceiling was completed in the auditorium allowing the theatrical lighting to be installed and the masonry walls to be finalized. The wood floor is installed in the main gym and auxiliary gym and the bleachers will be released for installation early February.
New High School (South, Ardrey) (17)	\$ 154,930,460	New 100 classroom high school to relieve South Mecklenburg, Ardrey Kell and Myers Park HS.	August 2024	Construction Documents	0 %	The New High School (South, Ardrey Kell Relief) project continues its review for building permit approval with LUESA. The construction manager has issued bid documents to qualified bidders and will receive bids in February. The team has completed documents for the rezoning process which will be reviewed in February.
North Academy of World Languages	\$ 42,359,367	New 66 classroom K-8 Language Immersion facility located on the old J.M. Alexander Middle School site.	August 2021	Complete	99 %	The project closeout and final financial reconciliation process with the construction manager is underway.

# Monthly Project Status

2017 Bond Summary

January 2022

Project	Current Project Estimate	Project Scope	** Occupy On	Design Phase	Construction Progress	Project Status
Northwest School of the Arts (17)	\$ 20,467,000	Replace classroom building built in 1952 and build classroom addition that supports program.	August 2024	Not Started	0 %	Design to start in early 2022.
Shamrock Gardens Elementary School (17)	\$ 32,358,351	New 45-classroom replacement facility.	August 2022	Complete	70 %	The Shamrock Gardens Elementary School construction manager completed several activities in January. The final connections to the storm system began with the roof leaders being tied into the system. Preparations were made for final grading around the building to begin sidewalks once the exterior veneer is complete. Overhead MEP continued in the classroom building. Casework, flooring and ceiling tiles started in the art, music and media center. The kitchen freezer and cooler started installation along with the quarry tile. The elevator contractor mobilized and began installations.
Sharon Elementary School (17)	\$ 9,475,862	Add 16 classroom building and increase capacity of cafeteria.	August 2021	Complete	99 %	The project closeout and final financial reconciliation process with the construction manager is underway.
South Academy of International Languages (fka New K-8 School (South) (17)	\$ 41,959,367	New 71 classroom K-8 Language Immersion facility located on the old Nations Ford Elementary School site.	August 2021	Complete	99 %	The project closeout and final financial reconciliation process with the construction manager is underway.
South Mecklenburg High School (17)	\$ 15,622,927	Renovate/replace two classroom buildings built in 1958 to upgrade learning conditions.	January 2025	Not Started	0 %	Planning underway, design to start in 2022.
South Pine Academy	\$ 31,272,550	New 45-classroom elementary school to relieve Nations Ford, Sterling, and Steele Creek.	August 2021	Complete	99 %	The project closeout and final financial reconciliation process with the construction manager is underway.

# Monthly Project Status

2017 Bond Summary

January 2022

Project	Current Project Estimate	Project Scope	** Occupy On	Design Phase	Construction Progress	Project Status
West Charlotte High School (17)	\$ 109,977,166	New 100 classroom school to replace current facility built in 1954.	August 2022	Complete	73 %	The trade contractors continue to work throughout the West Charlotte High School facility. The interior finishes have progressed in many areas including setting equipment and finish painting. Mechanical, electrical and plumbing trade partners have also installed finishes and fixtures. The gymnasium has progressed with bleachers and finish paint including accent walls. The VCT and carpet have started in some areas. The lights are installed in the lay-in ceiling throughout. The science casework is progressing and has completed in some classrooms. The stadium improvements including the field house and concession stands are nearing completion. The new bus lot base layer of asphalt is in place.
West Mecklenburg High School (17)	\$ 10,850,902	Provide new gymnasium, the existing gymnasium will become the auxilliary.	August 2021	Complete	99 %	The project closeout and final financial reconciliation process with the construction manager is underway.

# MONTHLY PROJECT PHOTOS

## PROJECT PROGRESS PHOTOS

---



New High School Olympic Relief

## PROJECT PROGRESS PHOTOS

---



New High School Olympic Relief



## PROJECT PROGRESS PHOTOS

---



New High School Olympic Relief

## PROJECT PROGRESS PHOTOS



New High School Olympic Relief



## PROJECT PROGRESS PHOTOS

---



West Charlotte High School Replacement



## PROJECT PROGRESS PHOTOS

---



West Charlotte High School Replacement

## PROJECT PROGRESS PHOTOS

---



West Charlotte High School Replacement



## PROJECT PROGRESS PHOTOS

---



West Charlotte High School Replacement

## PROJECT PROGRESS PHOTOS

---



West Charlotte High School Replacement



## PROJECT PROGRESS PHOTOS

---



Shamrock Gardens Elementary School



## PROJECT PROGRESS PHOTOS

---



Shamrock Gardens Elementary School

## PROJECT PROGRESS PHOTOS

---



Shamrock Gardens Elementary School



## PROJECT PROGRESS PHOTOS



Shamrock Gardens Elementary School

## PROJECT PROGRESS PHOTOS

---



Lansdowne Elementary School



## PROJECT PROGRESS PHOTOS

---



Lansdowne Elementary School

## PROJECT PROGRESS PHOTOS

---



Lansdowne Elementary School



## PROJECT PROGRESS PHOTOS



Lansdowne Elementary School



## PROJECT PROGRESS PHOTOS

---



East Mecklenburg High School

## PROJECT PROGRESS PHOTOS

---



East Mecklenburg High School

## PROJECT PROGRESS PHOTOS

---



East Mecklenburg High School



## PROJECT PROGRESS PHOTOS

---



New ES (Bain, Lebanon, Piney Grove Relief)

## PROJECT PROGRESS PHOTOS

---



New ES (Bain, Lebanon, Piney Grove Relief)

## PROJECT PROGRESS PHOTOS

---



New ES (Bain, Lebanon, Piney Grove Relief)



## PROJECT PROGRESS PHOTOS

---



New ES (Bain, Lebanon, Piney Grove Relief)

## PROJECT PROGRESS PHOTOS

---



Garinger High School



## PROJECT PROGRESS PHOTOS

---



Garinger High School

## PROJECT PROGRESS PHOTOS

---



Garinger High School

# MWSBE PARTICIPATION REPORT

# Contract Status Report - MWSBE Participation Commitments

Report Date 2/17/2022

Charlotte-Mecklenburg Schools

2/17/2022 12:00:37 PM

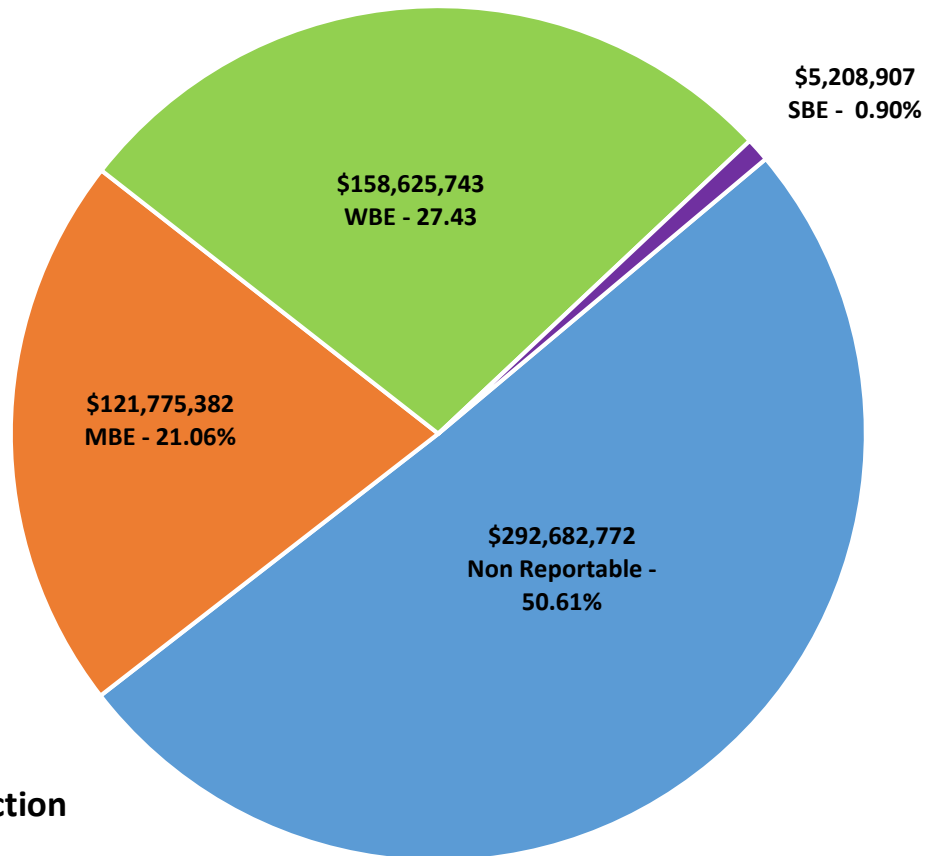
2017 Bond Projects

January 2022 Monthly Bond Report

Facility	Contract Amount	African American MBE\$	%	Other MBE \$	%	Total MBE \$	%	Other WBE \$	%	Other SBE \$	%	Total	%
<u>Briarwood Elementary School (17)</u>	\$28,723,186	\$4,026,343	14.02%	\$2,424,277	8.44%	\$6,450,620	22.46%	\$2,039,792	7.10%	\$152,902	0.53%	\$8,643,314	30.09%
<u>Career and Technology Education (1</u>	\$5,922,484	\$548,729	9.27%	\$300,652	5.08%	\$849,381	14.34%	\$246,751	4.17%	\$65,475	1.11%	\$1,161,607	19.61%
<u>Charlotte-Mecklenburg Academy (17</u>	\$17,035,852	\$198,536	1.17%	\$1,029,192	6.04%	\$1,227,728	7.21%	\$872,755	5.12%	\$13,200	0.08%	\$2,113,683	12.41%
<u>Collinswood Language Academy (17)</u>	\$38,527,740	\$649,287	1.69%	\$1,613,103	4.19%	\$2,262,390	5.87%	\$11,362,566	29.49%	\$9,328	0.02%	\$13,634,284	35.39%
<u>E.E. Waddell (17)</u>	\$157,805	\$0	0.00%	\$0	0.00%	\$0	0.00%	\$10,950	6.94%	\$0	0.00%	\$10,950	6.94%
<u>East Mecklenburg High School (17)</u>	\$12,575,074	\$603,811	4.80%	\$532,460	4.23%	\$1,136,271	9.04%	\$490,382	3.90%	\$681,075	5.42%	\$2,307,728	18.35%
<u>Garinger High School (17)</u>	\$4,212,784	\$49,330	1.17%	\$412,572	9.79%	\$461,902	10.96%	\$165,433	3.93%	\$0	0.00%	\$627,335	14.89%
<u>Harding High School (17)</u>	\$13,015,986	\$1,504,505	11.56%	\$310,356	2.38%	\$1,814,862	13.94%	\$3,846,831	29.55%	\$176	0.00%	\$5,661,869	43.50%
<u>JT Williams (17)</u>	\$1,335,493	\$2,000	0.15%	\$20,000	1.50%	\$22,000	1.65%	\$0	0.00%	\$0	0.00%	\$22,000	1.65%
<u>Lansdowne Elementary School (17)</u>	\$30,617,679	\$2,187,869	7.15%	\$468,305	1.53%	\$2,656,174	8.68%	\$2,220,197	7.25%	\$223,625	0.73%	\$5,099,996	16.66%
<u>Lincoln Heights Elementary School (1</u>	\$454,706	\$92,274	20.29%	\$18,800	4.13%	\$111,074	24.43%	\$0	0.00%	\$74,503	16.38%	\$185,577	40.81%
<u>Montclair Elementary School (17)</u>	\$26,093,784	\$3,617,952	13.87%	\$2,260,381	8.66%	\$5,878,333	22.53%	\$5,729,641	21.96%	\$518,632	1.99%	\$12,126,605	46.47%
<u>Mountain Island Lake Academy (17)</u>	\$807,815	\$0	0.00%	\$36,650	4.54%	\$36,650	4.54%	\$19,550	2.42%	\$0	0.00%	\$56,200	6.96%
<u>New Elementary School (Bain, Leban</u>	\$26,301,565	\$4,678,087	17.79%	\$18,841,591	71.64%	\$23,519,678	89.42%	\$1,214,672	4.62%	\$308,680	1.17%	\$25,043,030	95.21%
<u>New Elementary School (Elon, Hawk</u>	\$7,531,033	\$0	0.00%	\$0	0.00%	\$0	0.00%	\$61,240	0.81%	\$0	0.00%	\$61,240	0.81%
<u>New Elementary School (Hidden Vall</u>	\$7,682,288	\$182,000	2.37%	\$99,674	1.30%	\$281,674	3.67%	\$3,956,796	51.51%	\$25,600	0.33%	\$4,264,070	55.51%
<u>New Elementary School (Windsor, W</u>	\$8,710,845	\$1,456,670	16.72%	\$258,000	2.96%	\$1,714,670	19.68%	\$358,675	4.12%	\$0	0.00%	\$2,073,345	23.80%
<u>New High School (17) (Olympic Relie</u>	\$98,154,986	\$13,312,696	13.56%	\$5,874,324	5.98%	\$19,187,020	19.55%	\$8,458,793	8.62%	\$766,550	0.78%	\$28,412,363	28.95%
<u>New High School (South, Ardrey) (17</u>	\$7,237,837	\$13,500	0.19%	\$91,000	1.26%	\$104,500	1.44%	\$507,465	7.01%	\$27,500	0.38%	\$639,465	8.84%
<u>North Academy of World Languages</u>	\$38,090,783	\$1,688,775	4.43%	\$1,575,863	4.14%	\$3,264,638	8.57%	\$3,471,693	9.11%	\$437,418	1.15%	\$7,173,748	18.83%
<u>Northwest School of the Arts (17)</u>	\$218,130	\$0	0.00%	\$0	0.00%	\$0	0.00%	\$0	0.00%	\$0	0.00%	\$0	0.00%
<u>Shamrock Gardens Elementary Scho</u>	\$27,979,335	\$2,162,828	7.73%	\$1,468,953	5.25%	\$3,631,781	12.98%	\$22,895,608	81.83%	\$275,594	0.98%	\$26,802,983	95.80%
<u>Sharon Elementary School (17)</u>	\$8,508,547	\$278,444	3.27%	\$338,513	3.98%	\$616,956	7.25%	\$926,873	10.89%	\$223,725	2.63%	\$1,767,554	20.77%
<u>South Academy of International Lan</u>	\$37,065,863	\$6,023,141	16.25%	\$2,431,071	6.56%	\$8,454,212	22.81%	\$10,755,611	29.02%	\$347,799	0.94%	\$19,557,622	52.76%

Facility	Contract Amount	African American MBE\$	%	Other MBE \$	%	Total MBE \$	%	Other WBE \$	%	Other SBE \$	%	Total	%
<u>South Mecklenburg High School (17)</u>	\$115,472	\$0	0.00%	\$0	0.00%	\$0	0.00%	\$0	0.00%	\$0	0.00%	\$0	0.00%
<u>South Pine Academy</u>	\$26,415,366	\$916,165	3.47%	\$19,416,086	73.50%	\$20,332,251	76.97%	\$4,342,256	16.44%	\$237,754	0.90%	\$24,912,261	94.31%
<u>West Charlotte High School (17)</u>	\$94,990,975	\$15,223,007	16.03%	\$1,744,400	1.84%	\$16,967,406	17.86%	\$72,607,462	76.44%	\$535,596	0.56%	\$90,110,464	94.86%
<u>West Mecklenburg High School (17)</u>	\$9,809,391	\$283,809	2.89%	\$509,403	5.19%	\$793,212	8.09%	\$2,063,752	21.04%	\$283,775	2.89%	\$3,140,739	32.02%
<b>Grandtotal</b>	\$578,292,804	\$59,699,757	10.32%	\$62,075,625	10.73%	\$121,775,382	21.06%	\$158,625,743	27.43%	\$5,208,907	0.90%	\$285,610,032	49.39%

## MWSBE Participation 2017 Bond Projects



**Design and Construction  
Contract Total  
\$578,292,804**

# PROJECT CONTROLS

CHARLOTTE-MECKLENBURG BOARD OF EDUCATION  
2013 BOND SERIES-CAPITAL IMPROVEMENT PROGRAM  
BUDGET STATUS REPORT

	Original Project Budget	Current Project Budget	Committed Amount	Approved Change Orders	Total Committed	Pending Commitments	To Be Committed	Prev Paid To Date	Paid To Date	Balance To Complete	Monthly Expenditure
	(A)	(B)	(C)	(D)	(E)=C+D	(F)	(G)=(B-E-F)	(H)	(I)	(J)=(B-I)	(K)=(I-H)
<b><u>A. REPLACEMENT &amp; RENOVATIONS</u></b>											
1 Career & Technology Education Institutes Phase 1:	\$8,640,000	\$18,697,857	\$6,963,309	\$11,734,547	\$18,697,856	\$0	\$1	\$9,457,264	\$11,077,018	\$7,620,839	\$1,619,754
2 Davidson K-8 Conversion	\$9,500,000	\$13,461,149	\$2,131,151	\$11,329,998	\$13,461,149	\$0	\$0	\$13,461,149	\$13,461,149	\$0	\$0
3 J.M. Alexander Middle Replacement	\$30,672,000	\$29,845,539	\$4,502,518	\$25,343,021	\$29,845,539	\$0	\$0	\$29,845,539	\$29,845,539	\$0	\$0
4 Nations Ford Elementary Replacement	\$19,440,000	\$19,231,603	\$3,958,869	\$15,272,733	\$19,231,603	\$0	\$0	\$19,231,604	\$19,231,604	\$0	\$0
5 Northwest School of the Arts	\$12,420,000	\$12,868,718	\$2,047,917	\$10,820,801	\$12,868,718	\$0	\$0	\$12,868,719	\$12,868,719	\$0	\$0
6 Oakhurst STEAM Magnet Elementary/Starmount	\$5,940,000	\$5,407,812	\$3,471,397	\$1,936,415	\$5,407,812	\$0	\$0	\$5,407,812	\$5,407,812	\$0	\$0
7 Pre-K-8 Conversions Phase II: Ashley Park/ Bruns	\$24,732,000	\$19,700,808	\$4,167,669	\$15,533,138	\$19,700,807	\$0	\$0	\$19,700,807	\$19,700,807	\$0	\$0
8 Selwyn Elementary	\$2,592,000	\$4,624,831	\$744,799	\$3,880,032	\$4,624,831	\$0	\$0	\$4,624,831	\$4,624,831	\$0	\$0
9 Statesville Road Elementary	\$20,340,000	\$20,648,510	\$5,081,473	\$15,567,037	\$20,648,509	\$0	\$0	\$20,648,509	\$20,648,509	\$0	\$0
<b>Total Replacement &amp; Renovations</b>	<b>\$134,276,000</b>	<b>\$144,486,825</b>	<b>\$33,069,102</b>	<b>\$111,417,722</b>	<b>\$144,486,824</b>	<b>\$0</b>	<b>\$1</b>	<b>\$135,246,233</b>	<b>\$136,865,987</b>	<b>\$7,620,838</b>	<b>\$1,619,754</b>
<b><u>B. RESPONSE TO ENROLLMENT GROWTH</u></b>											
1 East Mecklenburg High Addition	\$12,744,000	\$10,988,287	\$3,369,684	\$7,618,603	\$10,988,287	\$0	\$0	\$10,988,287	\$10,988,287	\$0	\$0
2 Myers Park High Addition	\$22,248,000	\$11,040,942	\$1,207,493	\$9,833,448	\$11,040,942	\$0	\$0	\$11,040,941	\$11,040,941	\$0	\$0
3 Northridge Middle Addition	\$6,448,000	\$6,366,170	\$2,114,306	\$4,251,865	\$6,366,171	\$0	\$0	\$6,366,171	\$6,366,171	\$0	\$0
4 Olympic High Addition/Renovation	\$8,964,000	\$8,947,310	\$2,002,694	\$6,944,615	\$8,947,310	\$0	\$0	\$8,947,310	\$8,947,310	\$0	\$0
5 South Mecklenburg High Addition	\$18,360,000	\$16,307,355	\$2,922,282	\$13,385,073	\$16,307,355	\$0	\$0	\$16,307,355	\$16,307,355	\$0	\$0
6 Charlotte East Language Academy (FKA -New Lang	\$30,376,000	\$31,387,929	\$5,740,182	\$25,647,747	\$31,387,929	\$0	\$0	\$31,387,929	\$31,387,929	\$0	\$0
7 Rea Farms STEAM Academy	\$31,376,000	\$40,476,000	\$9,060,568	\$30,187,065	\$39,247,633	(\$5,460)	\$1,233,827	\$38,871,566	\$38,884,923	\$1,591,077	\$13,357
8 Renaissance West STEAM Academy (FKA New Pre-	\$30,376,000	\$31,698,952	\$5,667,388	\$26,031,564	\$31,698,952	\$0	\$0	\$31,698,952	\$31,698,952	\$0	\$0
<b>Total Response to Enrollment Growth</b>	<b>\$160,892,000</b>	<b>\$157,212,946</b>	<b>\$32,084,598</b>	<b>\$123,899,981</b>	<b>\$155,984,579</b>	<b>(\$5,460)</b>	<b>\$1,233,827</b>	<b>\$155,608,511</b>	<b>\$155,621,868</b>	<b>\$1,591,078</b>	<b>\$13,357</b>
<b><u>C. CONTINGENCY</u></b>											
	\$0	\$0	\$0	\$0	\$0	\$0	\$0	\$0	\$0	\$0	\$0
<b>Total Contingency</b>	<b>\$0</b>	<b>\$0</b>	<b>\$0</b>	<b>\$0</b>	<b>\$0</b>	<b>\$0</b>	<b>\$0</b>	<b>\$0</b>	<b>\$0</b>	<b>\$0</b>	<b>\$0</b>
<b>TOTAL LOCAL BOND PROGRAM</b>	<b>\$295,168,000</b>	<b>\$301,699,771</b>	<b>\$65,153,700</b>	<b>\$235,317,703</b>	<b>\$300,471,403</b>	<b>(\$5,460)</b>	<b>\$1,233,828</b>	<b>\$290,854,744</b>	<b>\$292,487,855</b>	<b>\$9,211,916</b>	<b>\$1,633,111</b>

Original project estimated costs approved by the Board Of Education on July 23, 2013 and approved by the voters of Mecklenburg County on November 5, 2013.

Note: Mecklenburg County's appropriated interest from COPS to increase funding for the 2013 Bond Program.



**CHARLOTTE-MECKLENBURG BOARD OF EDUCATION**  
**2017 BOND SERIES-CAPITAL IMPROVEMENT PROGRAM**  
**BUDGET STATUS REPORT**

	Original Project Budget	Current Project Budget	Committed Amount	Approved Change Orders	Total Committed	Pending Commitments	To Be Committed	Prev Paid To Date	Paid To Date	Balance To Complete	Monthly Expenditure
	(A)	(B)	(C)	(D)	(E)=(C+D)	(F)	(G)=(B-E-F)	(H)	(I)	(J)=(B-I)	(K)=(I-H)
<b><u>A. REPLACEMENT &amp; RENOVATIONS</u></b>											
1 Briarwood Elementary *	\$29,091,619	\$31,962,730	\$4,803,574	\$26,609,642	\$31,413,216	\$172,381	\$377,133	\$28,458,390	\$28,978,210	\$2,984,520	\$519,820
2 Bruns Academy Replacement	\$34,207,808	\$39,784,927	\$3,568,024	\$218,050	\$3,786,074	\$0	\$35,998,853	\$0	\$0	\$39,784,927	\$0
3 Career & Technology Education Upgrades	\$10,101,734	\$10,159,765	\$2,333,694	\$4,099,152	\$6,432,846	\$77,334	\$3,649,585	\$3,988,167	\$4,459,565	\$5,700,200	\$471,398
4 Collinswood K-8 *	\$44,172,540	\$41,547,540	\$5,014,769	\$36,476,435	\$41,491,204	\$0	\$56,336	\$41,384,602	\$41,384,602	\$162,938	\$0
5 East Mecklenburg HS	\$12,771,594	\$15,058,594	\$1,855,823	\$11,825,297	\$13,681,120	(\$4,960)	\$1,382,434	\$6,177,877	\$7,542,675	\$7,515,919	\$1,364,799
6 Garinger HS	\$13,936,979	\$5,986,979	\$1,605,095	\$3,475,359	\$5,080,454	\$6,518	\$900,007	\$1,559,327	\$2,016,829	\$3,970,150	\$457,502
7 Harding University High *	\$18,330,263	\$13,805,263	\$2,051,258	\$11,722,683	\$13,773,942	\$0	\$31,321	\$13,658,441	\$13,747,877	\$57,386	\$89,436
8 Charlotte-Mecklenburg Academy (FKA -EC Specialty	\$18,957,960	\$17,699,220	\$2,175,504	\$15,523,717	\$17,699,220	\$0	\$0	\$17,699,220	\$17,699,220	\$0	\$0
9 Lansdowne Elementary	\$29,391,270	\$35,378,834	\$4,129,718	\$29,467,186	\$33,596,903	\$53,832	\$1,728,099	\$18,178,881	\$19,553,427	\$15,825,407	\$1,374,546
10 Lincoln Heights Elementary	\$3,740,478	\$4,588,675	\$577,649	\$49,054	\$626,703	\$0	\$3,961,972	\$383,738	\$383,738	\$4,204,937	\$0
11 Montclair Elementary Replacement *	\$28,559,390	\$28,559,390	\$2,426,761	\$25,948,952	\$28,375,714	\$0	\$183,676	\$28,116,709	\$28,117,460	\$441,930	\$752
12 Mountain Island k-8	\$9,218,439	\$10,488,400	\$1,181,039	\$16,430	\$1,197,469	\$0	\$9,290,931	\$339,038	\$375,888	\$10,112,512	\$36,850
13 Northwest School of the Arts	\$17,632,202	\$20,467,000	\$949,866	\$117,644	\$1,067,510	\$0	\$19,399,490	\$0	\$0	\$20,467,000	\$0
14 Shamrock Gardens Elementary *	\$29,890,351	\$32,358,351	\$3,724,557	\$27,153,983	\$30,878,540	\$27,854	\$1,451,957	\$17,326,505	\$18,869,988	\$13,488,363	\$1,543,483
15 Sharon Elementary	\$7,706,528	\$9,475,862	\$1,443,456	\$7,666,919	\$9,110,375	\$14,317	\$351,169	\$8,663,068	\$8,675,068	\$800,794	\$12,000
16 South Mecklenburg HS	\$13,352,143	\$15,622,927	\$676,610	\$94,238	\$770,848	\$0	\$14,852,079	\$2,834	\$2,834	\$15,620,093	\$0
17 E.E. Waddell Magnet HS	\$4,571,709	\$5,137,367	\$347,531	\$0	\$347,531	\$0	\$4,789,836	\$98,364	\$99,041	\$5,038,327	\$677
18 West Charlotte HS Replacement	\$109,977,166	\$109,977,166	\$12,142,118	\$91,395,330	\$103,537,448	\$179,928	\$6,259,790	\$66,140,919	\$69,510,862	\$40,466,304	\$3,369,943
19 West Mecklenburg HS	\$11,065,440	\$10,850,902	\$1,607,809	\$8,670,708	\$10,278,517	\$0	\$572,385	\$9,093,762	\$9,103,126	\$1,747,776	\$9,364
20 John Taylor Williams	\$13,964,339	\$15,732,600	\$1,878,900	\$21,670	\$1,900,570	\$0	\$13,832,030	\$307,509	\$455,708	\$15,276,892	\$148,199
<b>Total Replacement &amp; Renovations</b>	<b>\$460,639,952</b>	<b>\$474,642,492</b>	<b>\$54,493,754</b>	<b>\$300,552,449</b>	<b>\$355,046,203</b>	<b>\$527,205</b>	<b>\$119,069,085</b>	<b>\$261,577,351</b>	<b>\$270,976,120</b>	<b>\$203,666,372</b>	<b>\$9,398,769</b>
<b><u>B. RESPONSE TO ENROLLMENT GROWTH</u></b>											
1 South Academy of International Languages	\$45,359,367	\$41,959,367	\$6,029,960	\$35,050,079	\$41,080,039	\$0	\$879,328	\$40,303,822	\$40,369,942	\$1,589,425	\$66,120
2 North Academy of World Languages (FKA - New K-8	\$45,359,367	\$42,359,367	\$6,022,055	\$35,999,788	\$42,021,844	\$0	\$337,523	\$41,606,831	\$41,789,276	\$570,091	\$182,445
3 South Pine Academy (FKA - New ES Nations Ford, S	\$29,173,829	\$31,272,550	\$6,806,186	\$24,425,881	\$31,232,067	\$2,450	\$38,033	\$29,975,946	\$30,054,379	\$1,218,170	\$78,433
4 New Elementary School - Bain/Lebanon Relief	\$29,988,332	\$30,455,951	\$3,543,988	\$26,554,941	\$30,098,929	\$46,786	\$310,237	\$11,416,743	\$13,341,843	\$17,114,108	\$1,925,100
5 New Elementary School - Windsor Park Relief *	\$30,422,230	\$42,697,022	\$4,716,556	\$5,449,264	\$10,165,820	\$0	\$32,531,202	\$2,332,687	\$2,461,524	\$40,235,498	\$128,837
6 New Elementary School - Elon/Hawk Ridge Relief *	\$30,426,712	\$50,856,962	\$14,209,609	\$5,418,480	\$19,628,090	\$350,000	\$30,878,872	\$11,843,268	\$11,878,458	\$38,978,504	\$35,190
7 New Elementary School - Hidden Valley Relief	\$30,518,345	\$40,197,022	\$4,146,578	\$5,867,040	\$10,013,618	\$0	\$30,183,404	\$2,018,204	\$2,152,691	\$38,044,331	\$134,487
8 New High School - Olympic Relief	\$109,908,793	\$109,908,793	\$11,337,733	\$97,051,295	\$108,389,028	\$225,521	\$1,294,243	\$75,702,978	\$79,310,616	\$30,598,177	\$3,607,638
9 New High School - South Meck/Ardrey Kell Relief *	\$110,287,621	\$154,930,460	\$11,746,743	\$867,315	\$12,614,058	\$69,350	\$142,247,052	\$4,386,357	\$4,406,182	\$150,524,278	\$19,825
<b>Total Response to Enrollment Growth</b>	<b>\$461,444,596</b>	<b>\$544,637,493</b>	<b>\$68,559,408</b>	<b>\$236,684,085</b>	<b>\$305,243,492</b>	<b>\$694,107</b>	<b>\$238,699,894</b>	<b>\$219,586,835</b>	<b>\$225,764,912</b>	<b>\$318,872,581</b>	<b>\$6,178,076</b>
<b><u>C. CONTINGENCY</u></b>											
	\$0	\$0	\$0	\$0	\$0	\$0	\$0	\$0	\$0	\$0	\$0
<b>Total Contingency</b>	<b>\$0</b>	<b>\$0</b>	<b>\$0</b>	<b>\$0</b>	<b>\$0</b>	<b>\$0</b>	<b>\$0</b>	<b>\$0</b>	<b>\$0</b>	<b>\$0</b>	<b>\$0</b>

CHARLOTTE-MECKLENBURG BOARD OF EDUCATION  
2017 BOND SERIES-CAPITAL IMPROVEMENT PROGRAM  
BUDGET STATUS REPORT

	Original Project Budget	Current Project Budget	Committed Amount	Approved Change Orders	Total Committed	Pending Commitments	To Be Committed	Prev Paid To Date	Paid To Date	Balance To Complete	Monthly Expenditure
	(A)	(B)	(C)	(D)	(E)=C+D	(F)	(G)=(B-E-F)	(H)	(I)	(J)=(B-I)	(K)=(I-H)
TOTAL LOCAL BOND PROGRAM	\$922,084,548	\$1,019,279,985	\$123,053,162	\$537,236,533	\$660,289,695	\$1,221,312	\$357,768,979	\$481,164,187	\$496,741,032	\$522,538,954	\$15,576,845

Original project estimated costs approved by the Board Of Education on July 25, 2017 approved by the voters of Mecklenburg County on November 7, 2017.

\*Project included in \$33.2M early funding approved by Board Of Education on August 9, 2016 and Mecklenburg Board of County Commissioners on September 6, 2016. On February 19, 2019 an additional \$8M was approved for New Elementary School - Elon/Hawk Ridge Relief site.

\*Current Budget includes an additional \$89.2M to fund increase land and construction costs. The additional funds were approved by the Board of County Commissioners on June 16, 2020.

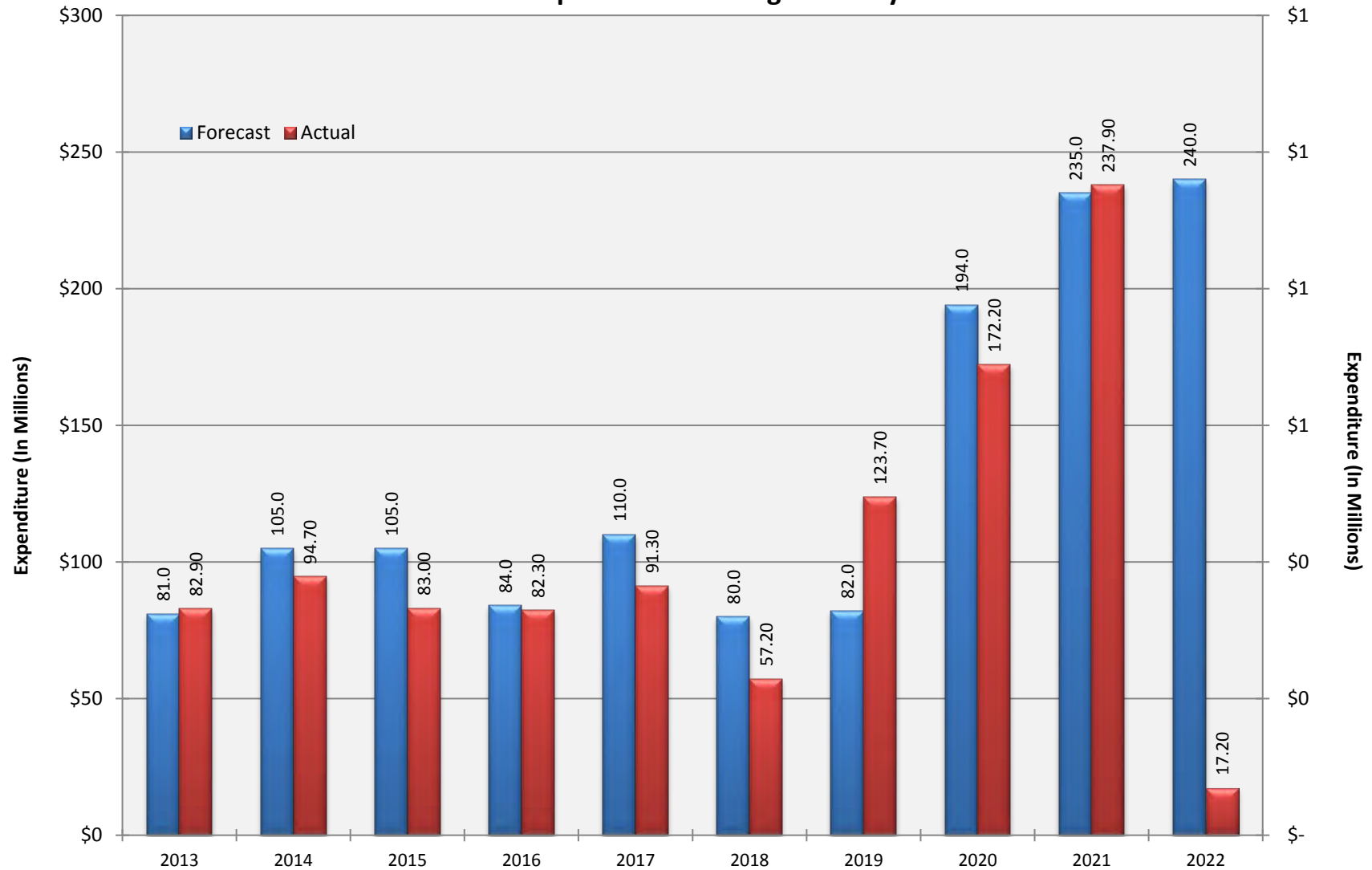
**Charlotte-Mecklenburg Board of Education**  
**Approved Construction or Repair Change Orders\***  
**Reporting Period: January 2022**

<b>Funding Source</b>	<b>Project Name</b>	<b>Contractor</b>	<b>Description</b>	<b>Change Order Amount</b>	<b>Revised Contract Value</b>
2017 Bond	North Academy of World Languages	New Atlantic Contracting, Inc.	Specialty Striping for PE; Sales Tax Incentive; Gymnasium Logo / LED Sign Delayed selection; Temporary Phone Lines; Cut-In Paint at Mech & Electrical Rooms; Hambright Rd Improvements AT&T Additional Costs for Utility Relocation	\$58,012.00	\$35,825,908.58
2018 Bond	Montclair Elementary School (17)	Messer Construction Company	Final Contract / Allowance Reconciliation Closeout	(\$101,909.23)	\$24,530,334.58
2017 Bond	West Charlotte High School (17)	RODGERS-HOLT BROTHERS, a Joint Venture	Add Steel Beams for Basketball Goal Supports; Relocate Arch/Plumbing Chases at Area A-B; Add Vent Connection at Lint Interceptors; Ceiling Revisions; DHU-1A Motor Modifications; Add Steadfast Padded Back Seats at Auditorium; Roof Drain Extensions; Coordination Study Revisions; Upper Level Expansion Joint at Brick; Add Fire Suppression for Kitchen Hoods.	\$32,457.00	\$88,608,945.00

\* Not previously presented to the Board of Education for Approval (less than \$90,000)

# 10 YEAR EXPENDITURE SUMMARY

Forecast Expenditure versus  
Actual Expenditures through January 2022



# GLOSSARY

# Glossary

---

- **Project Management** – This section includes updates from our project managers and describes the currently active construction projects. This includes from Board of Education award thru final completion.
- **Design and Bidding** – This section contains updates from our design managers on the projects currently in the design phase. This phase from design award to Board of Education award of construction.
- **Controls** – Section includes misc. updates from controls group including expenditures, related Board of Education awards during the reporting period, cash flow information. This section covers all projects from approved bond through final expenditures and bond close with the county.
- **MWSBE** – Contains updates from the MWSBE Director and team, including current activity and summaries of the participation by MWSBE providers on our program.
- **Bond Progress Summary** – Provides a summary of bond financials including bond value, committed/pending amounts, paid to date, expended this month.
- **Project Procurement Dates** - Next 90 Days major project bid activity.
- **Mobile Swing Space Utilization** – Includes a summary of program related swing space currently in use and the schedule of use.
- **Bond Summary Schedule** – Current program summary schedule including planned design, construction and FF&E. These activities are fed from detailed schedules and are fine-tuned as project information is available.
- **Project Contractor Teams**; Provides summary of turnover dates for completed/closed projects since 2010 including architects/designers and contractors.
- **School Site Location Maps** – General location of bond projects (2017) by type.
- **Project Status Report** – This section of the report provides a summary of the bond project scope, current estimate (all sources), planned occupancy/actual occupancy date. It also provides a current status of the design phase, construction progress and a brief update. The report currently includes 2013 and 2017 bond projects that have or will be completed after to August 2016.
- **MWSBE Participation Report** – The MWSBE report provides a summary of the participation on the 2013 & 2017 Bond funded projects.
- **Project Progress Photos** – Includes photos of active construction projects.
- **Budget Summary Reports** – These reports are by funding source and summarize financial activity to date on the projects. This includes original and current project estimates, committed values, amounts paid to date, balances and monthly expenditures.
- **Change Orders < \$90,000** – This month's approved construction or repair change orders < \$90,000.
- **Expenditure Summary** – Provides a summary of Bond Expenditures by calendar year.