

Capital Improvement Program

Monthly Bond Report October 2021



New Elementary School Bain, Lebanon, Piney Grove Relief



CAPITAL PROGRAM SERVICES Capital Improvement Program

OCTOBER 2021 **MONTHLY BOND REPORT**

PROGRAM OVERVIEW

- Project Management
- Design and Bidding
- Controls
- MWSBE
- Bond Progress Summary
- Project Procurement - Next 90 Days
- Swing Space Utilization
- Bond Summary Schedule
- Project Contractor Teams; Projects in Design/Construction and Substantially Completed/Closed
- School Site Location Maps
 - Elementary Schools
 - Middle Schools
 - High Schools & Specialty Schools

PROJECT STATUS REPORT

MWSBE PARTICIPATION REPORT

PROJECT PROGRESS PHOTOS

PROJECT CONTROLS

- Budget Summary Reports
 - 2013 Bond Series
 - 2017 Bond Series
- Change Orders < \$90,000
- Expenditure Summary

GLOSSARY

PROGRAM OVERVIEW

PROJECT MANAGEMENT

The following is a summary of the activity on the bond funded projects in construction during the month of October.

The **Briarwood Elementary Replacement School's** construction manager completed the demolition of the existing buildings and continues with the slab and foundation removal. The site work contractor mobilized to begin the installation of the new storm drainage piping and stormwater pond structure. The remaining site work is scheduled to be completed in 2022.

The **CTE projects at Harding and South Mecklenburg** continue to progress. The above ceiling rough-ins are progressing at Harding and the lay-in ceiling grid is complete at South Mecklenburg. The kitchen hood is also installed and quarry tile flooring is underway. The project team is working through kitchen equipment shipping issues and may have to substitute or provide temporary equipment to open for students and staff. The Harding project consists of renovations to existing classrooms in the auditorium building to develop a suite of technology classrooms. The project at South Mecklenburg consists of renovating the old kitchen area into a culinary arts lab and classroom. Both projects are scheduled for completion in January 2022.

The construction manager for **East Mecklenburg High School** completed the third floor elevated slab pour and the second floor elevated slab pour will follow. Structural steel frame has progressed to roof deck. The new classroom wing is scheduled for occupancy in August 2022.

The **Garinger Addition and Renovation** construction manager completed the installation of structural steel and slab on grade. The mason continued installation of interior CMU walls at the mechanical, electrical and restrooms. The addition is scheduled to be occupied August 2022 and the renovation to be occupied in January 2023.

The **Lansdowne Elementary School** construction manager has started the brick veneer at multiple elevations. The new building shell is complete and roofing installed on some areas. The interior metal stud framed walls are also progressing. The MEP contractors are working throughout on in-wall and above ceiling rough-ins. The site contractor has completed setting the stone for the staff parking lot which sits on top of the underground storm water detention pond. Occupancy of the replacement school is scheduled for August 2022. Upon completion of the new building, demolition and remaining site work will commence and be completed in 2023.

The **New Elementary School (Bain, Lebanon, Piney Grove Relief)** construction manager has completed most of the slab on grade and elevated slab pours. The mason continues with load bearing masonry construction. The steel erector remains on site and has continued setting steel framed portions of the building as materials are delivered. The MEP trades continued on site with wall and above ceiling rough-ins. The site contractor is working on underground storm water piping and erosion control. The team has received a preliminary design to review for the required signal at the school entrance. This new 45-classroom school will be located next to the existing Mint Hill Middle School. The project is scheduled for occupancy in August 2022.

The construction manager for the **New High School Olympic Relief** completed the installation of exterior metal studs and interior along with the exterior sheathing. The installation of exterior brick and metal panels continued. Installation of paint allowed the ceiling grid to be installed followed by light fixtures and HVAC diffusers. The casework installer mobilized and began in the classroom buildings. MEP trades continued with installations throughout the building. The landscaper installed sod, grass seed and plants. Curb and gutter continued along with the base pavement in the parking lots and access roads. Areas were prepped for the concrete sidewalks and planting beds. The track was paved and prepped for the track surface. Once the surface is installed the turf can be installed on the field. The 100-classroom relief high school is scheduled to be occupied in August 2022.

The **Shamrock Gardens Elementary School** construction manager continued with the installation of the exterior metal studs, sheathing, spray foam and brick veneer. The MEP trades continued with wall and overhead rough-ins throughout the building. Interior stud framing continued in the classroom wing and drywall installations began in approved areas. Landscaping continued in available areas. The new 45-classroom replacement elementary school is scheduled to be occupied August 2022.

The trade contractors continue to work throughout the **West Charlotte High School** facility. The interior finishes have progressed in many areas including setting equipment and finish painting. The vinyl composition tile (VCT) has also started in multiple areas of the building. Ceiling grid installation has also progressed allowing above ceiling rough-ins to progress. The MEP trades continue to set fixtures and the casework installation crew has mobilized and started setting cabinets. The site contractor has paved the new bus parking lot. The stadium light poles have been set and light fixtures will follow. The project team continues to work through supply chain logistics and issues with material availability. The project is scheduled to be occupied August 2022. Once the new school is occupied the existing school will be demolished and final site work will take place with final project completion in August 2023.

DESIGN AND BIDDING

The following is a summary of the activity on the bond funded projects in design and bidding phase during the month of October.

The **E.E. Waddell High School** project continues to progress in the construction document phase and the development of bid documents for the project. The project consists of light renovations to the existing science classrooms, maker space, lobby, HVAC work, limited VCT and acoustical ceilings. This project is scheduled to start construction summer of 2022 and be completed prior to occupancy in August of 2023.

The **JT Williams Secondary Montessori** project continues in the design development phase. The architect's submittal is due mid-November for review and comments. The project's scope focuses on required civil improvements, architectural and MEP renovations. The project is scheduled to be completed in August 2024.

The **Mountain Island Lake Academy** project continues to progress in the design development phase. This project consists of a building addition containing a middle school gymnasium and visual and performing arts classrooms. To address long lead time concerns the development of an early steel and roof procurement package are in progress. This project is scheduled to start in the spring 2022 and is scheduled for completion in August 2023.

The **New Elementary School (Elon, Hawk Ridge, Polo Relief)** project continues to progress in the construction document phase. The NCDOT/CDOT traffic study continues to progress with its development. The second round of rezoning comments have been received and returned for review/approval. The structural steel and roofing packages for the building have been approved by the BOE. The bid and award of the remainder of project will occur early in 2022. Construction is scheduled to start in the spring of 2022 and is scheduled for completion in August 2023. This new 45-classroom school will be located across from Ardrey Kell High School.

The **New Elementary School (Hidden Valley, JW Grier, Newell Relief)** project continues to progress in the construction document phase. The traffic analysis draft is under development and scheduled to be completed by mid-November. The project is currently bidding long lead scopes of work, including steel and roofing packages. These bids are scheduled to be received in mid November and submitted to the BOE for approval in December. The remainder will bid and award in the spring of 2022. This new 45-classroom school will be located next to Northridge Middle School and is scheduled for occupancy in August 2023.

The **New Elementary School (Windsor, Winterfield, Idlewild Relief)** project architect has submitted the design development documents to CMS for review and comments. The development of the individual permit for Corps of Engineers continues to progress and the traffic engineer has begun their traffic memorandum study. The early steel and roofing packages are scheduled to receive bids in mid November, and submitted to the BOE for approval in December. The remainder will bid and awards will occur in the spring of 2022. This new 45-classroom school facility is scheduled for occupancy in August 2023.

The **New High School (South, Ardrey Kell Relief)** project has moved into the permitting and procurement phases. The architect has submitted construction documents to CMS and LUESA for review and comments. The second round of rezoning comments have been returned for review/ approval. Army Corps of Engineers permit continues in its review process and is expected to receive approval in November. The construction manager has begun procurement/prequalification activities of subcontractors for the project. This project consists of a new 100-classroom high school with athletic play fields and stadium.

The teams continue to review the schedules for the projects in design with the construction managers to identify and address the current material delivery delays due to supply chain issues e.g. bar joist, metal decking, roofing insulation, etc. As noted above early steel procurement packages are in progress to mitigate extended lead times.

CONTROLS

Expenditures for the month of October were \$17.5M. This brings our fiscal year to date total to \$75.1M against the 2022 fiscal year cash flow projection of \$260M. The Controls team continues the closeout and accumulation of funds from completed 2013 and 2017 bond projects. The Controls team is allocating the accumulated funding to address potential supply chain and increased construction costs related to the COVID-19 pandemic and other escalation.

Board of Education approval was received on October 26, 2021, for phase one construction for the New Elementary School (Elon, Hawk Ridge, Polo Ridge relief) project. The award will provide the steel and roofing.

The Controls team continues to submit notices of potential changes at school sites so senior staff can adequately evaluate any issues. Additionally, the Controls team continues the processing of contracts, invoices, preparing notices of potential change, change orders, pay applications and check requests for projects under construction. Captured construction cost data is used to prepare financial reports such as detailed cost reports, budget summaries, reconciliation to CMS books, revisions to and updated cash flows and complete special financial requests by CMS and Mecklenburg County. This process, along with data compilation and management, allows senior staff to provide the proper guidance/direction and accurate information to the program stakeholders.

MWSBE

As of October 2021 the overall MWSBE utilization percentage related to design and construction of the 2017 bond projects is 50.37% which includes 22.21% participation by minority contractors, 27.23% by women contractors and 0.93% participation by small business contractors. This accounts for more than \$283 million of utilization by Minority, Women and Small Business Contractors.

The Diversity & Inclusion Office of Charlotte-Mecklenburg Schools continued to conduct several individual virtual orientations with new MWSBE contractors and prime contractors. In addition, team members also attended/hosted the following outreach sessions/pre-bid meetings and/or workforce development opportunities:

Outreach Sessions:

- Pre-bid Meeting for Steel & Roofing Packages - New Elementary School Windsor Park, Winterfield, Idlewild Relief hosted by Balfour Beatty
- Emerging Leaders Roundtable
- Supplier Diversity & Inclusion Roundtable
- NC HUB Office Reporting System Advisory Meeting
- Minority Business Development Agency Virtual Conference
- Virtual Charlotte Minority Enterprise Development Week hosted by Charlotte Area Transit Systems, Charlotte-Mecklenburg Schools, City of Charlotte, Central Piedmont Community College, Hispanic Contractors Association, Inlivian, Mecklenburg County, Metrolina Minority Contractors Association, NCDOT, NIMED, NC HUB Office, UNC Charlotte, and Women's Business Center of Charlotte. Attendees participated in a variety of workshops, Business Expo and Awards Celebration Luncheon.

We would like to thank the following sponsors: ADP, Balfour Beatty, Bank of America, Clancy & Theys, Edifice, Edison Foard, Heartland Construction, Holder Construction, Lil Associates, Messer, Metcon, New Atlantic, RJ Leeper, Rodgers Builders, Samet, Shiel Sexton, Superior Mechanical, Turner Construction and Whiting-Turner.

Commendations:

- Congratulations to the following Charlotte Minority Enterprise Development Week Honorees: United Painting Services, Inc. - Outstanding Achievement in Construction; Sterling Construction Services, Inc. - Outstanding Achievement in General Services; Richa Graphics - Outstanding Achievement Supply/Manufacturing; Applied Data Technologies - Outstanding Achievement in Professional Services; Syntelli Solutions, Inc. - Diversity Agency of the Year Metcon, Inc. and Lisette Velez of Hispanic Contractors Association for Diversity Advocate of the Year. Award winners were selected for overall growth and impact on the business community.

Workforce development awards were also presented to members of the community who have recognized the need to advocate, provide targeted job readiness skills and offer employment opportunities for graduates of these programs to improve the overall economic vitality of our community. Carly Morris of Rodgers Builders received the Workforce Development Advocate of the Year, Charlotte Works received the Workforce Development Community Partner of the Year and Messer Construction Company received the Workforce Development Champion of the Year award.

The Director of Diversity & Inclusion presented to the Board of Education an overview of MWSBE utilization for Fiscal year 2020-2021. Overall, \$447.7 million eligible expenditures were analyzed with \$137.5 million or 30.71 percent spent with MWSBE firms. Of the \$137.5 million, CMS spent 61 percent or \$83 million with non-minority females, 33 percent or \$46 million with minority firms and 6 percent or \$8 million with small businesses. Overall:

- At 30.71% of eligible spend, CMS achieved \$137.5 million in total MWSBE spend – **Highest in CMS History**
- CMS exceeded the overall MWSBE aspirational goals set for construction, contracted services and goods
- Exceeded the MBE aspirational goals in construction, architecture and engineering, and contracted services – **Highest utilization and spend in CMS History**
- Distribution of \$46 million MBE spend by race: African American \$20 million or 44 percent, Native American \$17 million or 38 percent, Hispanic \$5.7 million or 12 percent and Asian \$2.9 million or 6 percent
- Exceeded the WBE aspirational goals in construction, contracted services, and goods – **Highest in CMS History**

Workforce Development:

Since passage of the 2017 bond, CMS has committed over \$216.9M or 47.58% out of \$505.1 million with diverse businesses. This spend provides new opportunities for diverse businesses across the county and supports economic development and growth of a diverse workforce. In addition, this spend with diverse suppliers creates impact through multiple channels. It supports jobs and earnings at the suppliers. These suppliers purchase additional goods from other businesses, supporting additional jobs. Employees at these companies in the supply chain then support additional jobs in the community through their everyday purchases. The overall economic impact of all suppliers of the 18 projects currently in construction/design/delivered as of August 2021:

Overall Income Impact:

	Direct Impact	Supply Chain Effect (Indirect Impact)	Community Effect (Induced Impact)	Total Impact
Employment	1,265	226	345	1,836
GDP	\$210,048,657	\$49,789,122	\$55,163,670	\$315,001,449
Income	\$94,913,228	\$18,349,479	\$19,257,759	\$132,520,466

***Economic impact analysis provided by Charlotte Regional Business Alliance*

Detailed Impact Channels:

	MBE	WBE	SBE	Overall Total
Employment	355	478	21	1,836
GDP	\$56.3 million	\$34.3 million	\$1.6 million	\$315 million
Income	\$25 million	\$74.9 million	\$3.4 million	\$132.5 million

Overall Total Estimated Tax Impact:

	Direct	Indirect	Induced	Total
Local	\$1,815,697	\$969,555	\$1,250,053	\$4,035,305
State	\$3,662,188	\$1,235,114	\$1,521,098	\$6,418,400
Federal	\$15,898,631	\$3,292,776	\$3,538,965	\$22,730,372
Total	\$21,376,516	\$5,497,445	\$6,310,116	\$33,184,077

***Economic impact analysis provided by Charlotte Regional Business Alliance*

Workforce Development Related Activities:

New Hires	<ul style="list-style-type: none"> ▪ 2 (Temporary) ▪ 20 (Permanent)*
Internships (Mayor's Youth Employment Program, CPCC Construction program and CMS college graduates)	<ul style="list-style-type: none"> ▪ 13 (High School) ▪ 21 (College)
Apprenticeships	<ul style="list-style-type: none"> ▪ 4 (HVAC)
Activities	<ul style="list-style-type: none"> ▪ 80 training/job shadow hours ▪ Site tours for Goodwill students ▪ Sponsored two CMS students to attend UNC Charlotte Summer Design Academy

***Note: 3 new permanent new hires are ROC Graduates**

Over the next month, team members will continue to work with contractors interested in bidding on the upcoming school projects utilizing various virtual tools to communicate. Contractors are encouraged to review bid advertisements in Charlotte Observer and register as a vendor on the North Carolina Interactive Purchasing System for notification of the various opportunities.

BOND PROGRESS SUMMARY As of October 2021

Funding Source and Value		Amount Committed/Pending	Amount Paid to Date	Amount Expended This Period
2013 Bond	\$301,699,770	\$300,289,685	\$290,358,128	\$705,091
2017 Bond	\$1,019,279,985	\$632,069,153	\$445,306,296	\$16,763,023
Grand Total	\$1,320,979,755	\$932,358,838	\$735,664,424	\$17,468,114

UPCOMING MAJOR CONSTRUCTION PROCUREMENT DATES *Three Month Look Ahead*

School Name

Bid Dates*

New Elementary (Hidden Valley, JW Grier, Newell)
Structural Steel Package
(Bids managed by ADW Architects)

November 2021

New Elementary (Windsor, Winterfield, Idlewild)
Structural Steel Package
(Bids managed by Neighboring Concepts)

November 2021

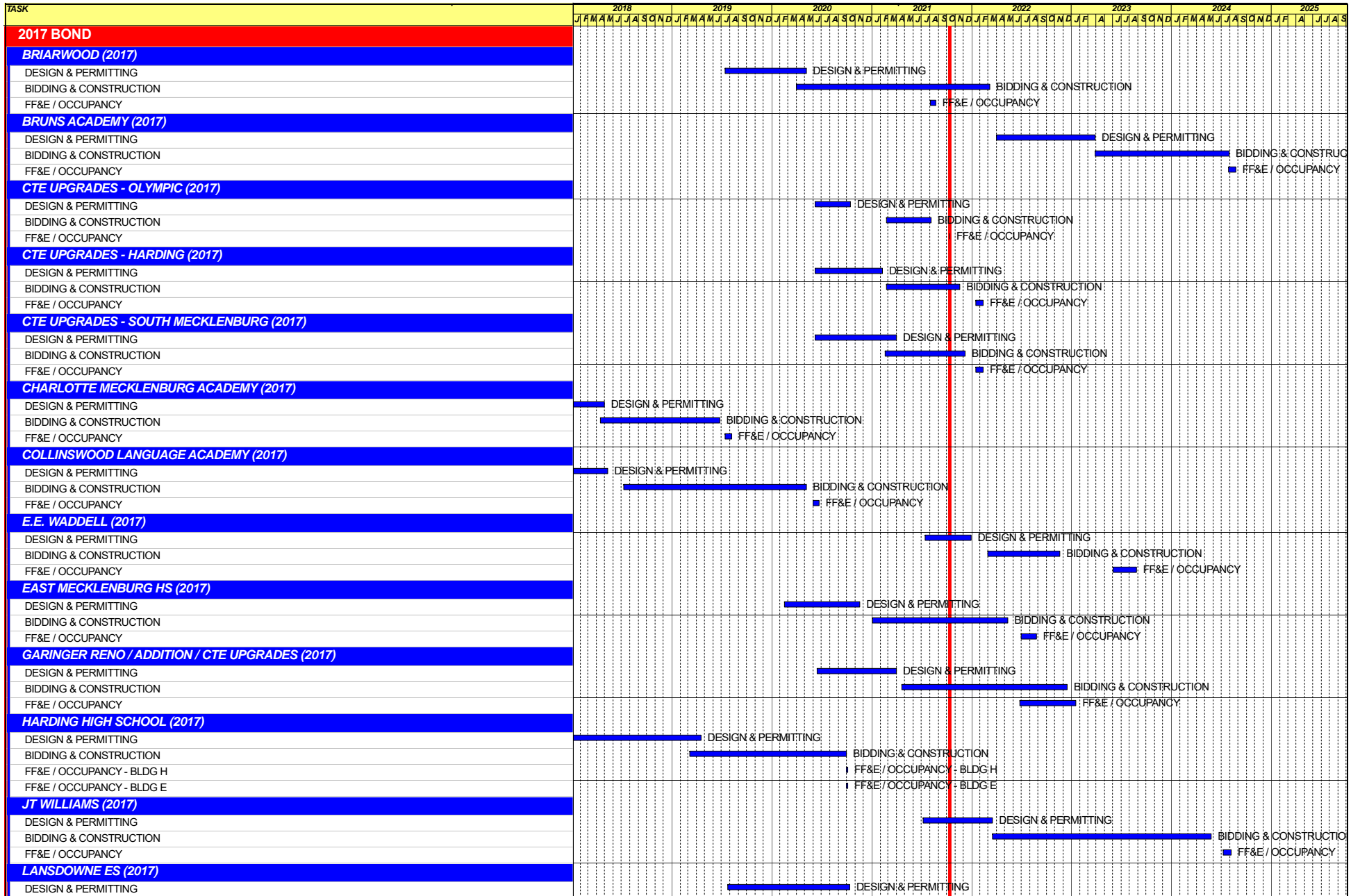
** NOTE: Work In Progress...Dates Subject to Change.*

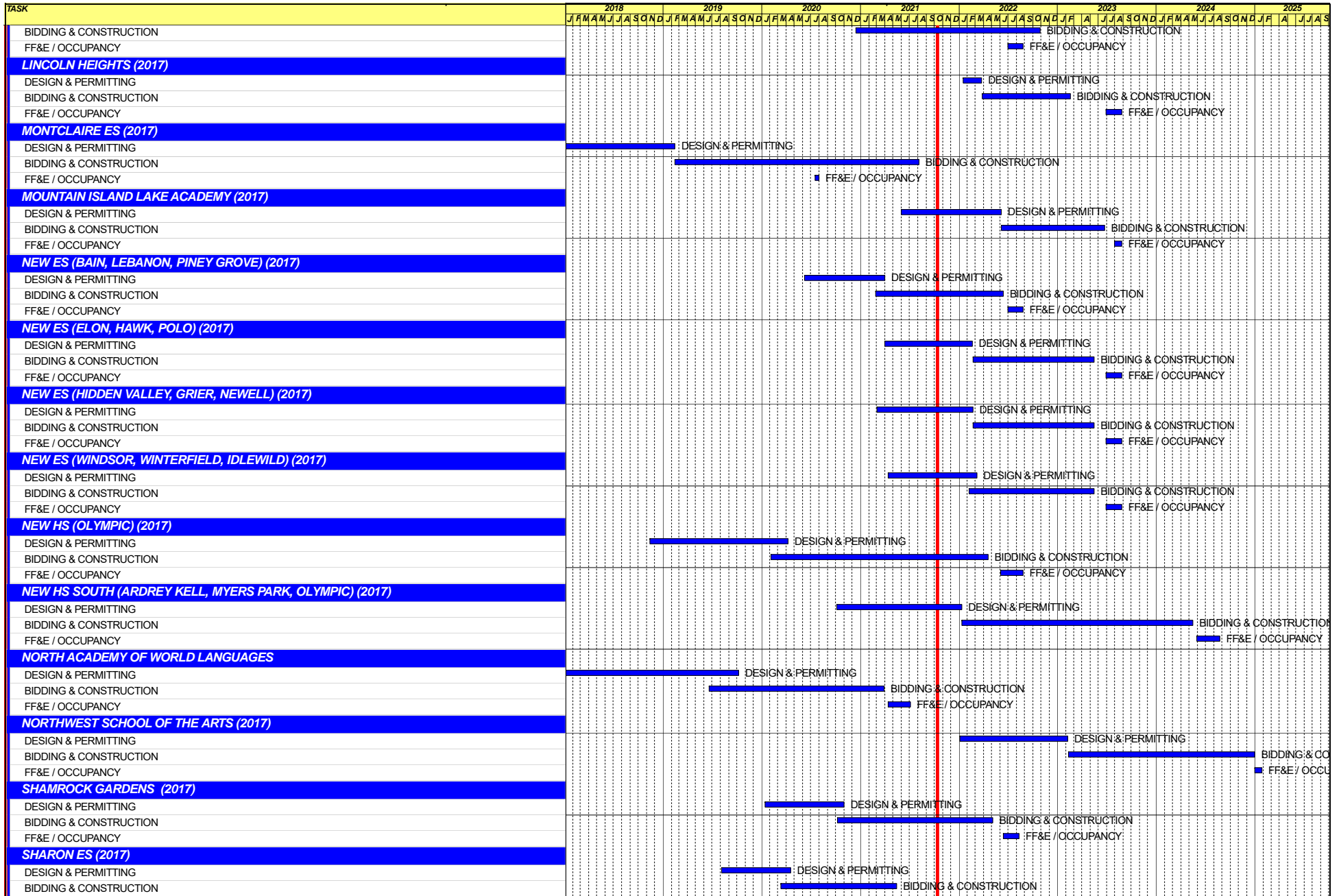
SWING SPACE UTILIZATION

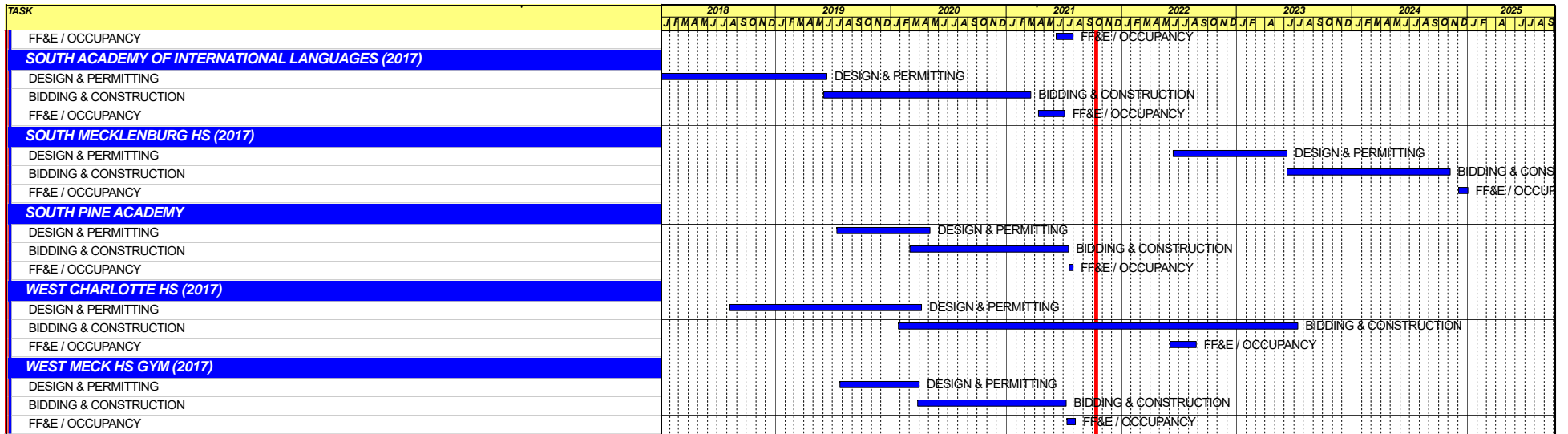
Creating a temporary space for students and staff to occupy during construction on a school’s campus has proven to be beneficial to the project’s schedule and cost and overall safety and efficiency of school operations. When the renovation or expansion of a facility is performed and the facility must remain functionally operational, there are benefits to the owner in using swing space.

We have successfully utilized both onsite and offsite swings. The most desirable swings are “offsite” ones. Onsite swing using mobiles or modulars, likewise has been successfully used. The following is a summary of current swing options planned or in use.

<u>School</u>	<u>No. of Mobiles/Relocation Site</u>	<u>Status (From – To)</u>
Shamrock	Lincoln Heights	August 2020 – August 2022







Capital Improvements Program
Projects in Design or Under Construction

School	Architect	General Contractor/CM
Projects In Design		
E.E. Waddell (17)	Moseley	TBD
J.T. Williams (17)	FWA	New Atlantic
Lincoln Heights Repurpose (17)	Neighboring Concepts	TBD
Mountain Island School (17)	ADW	Whiting-Turner
New ES (Elon,Hawk Ridge, Polo Ridge) (17)	Little Diversified	Balfour Beatty
New ES (Hidden Valley, JW Grier, Newell) (17)	ADW	Edifice, Inc.
New ES (Windsor, Winterfield, Idlewild) (17)	Neighboring Concepts	Rodgers-Holt Brothers
New HS (South, Ardrey) (17)	Ratio	Messer
Projects in Bid/Award/Construction Phase		
CTE (Harding, Olympic, South) (17)	MPS	Branch Brownstone
East Mecklenburg High School (17)	Morris Berg	Turner Construction
Garinger Addition/Renovation & CTE (17)	LS3P	Balfour Beatty
Lansdowne Elementary School Replacement (17)	Perkins Eastman	Edifice, Inc.
New ES (Bain, Lebanon Rd, Piney Grove) (17)	FWA	Metcon
New High School (Olympic Relief) (17)	Little Diversified	Edifice, Inc.
Shamrock Gardens Elementary School Replacement (17)	Little Diversified	Rodgers-Holt Brothers
West Charlotte High School (17)	LS3P	Rodgers-Holt Brothers

Capital Improvements Program
Projects Substantially Completed/Closed *

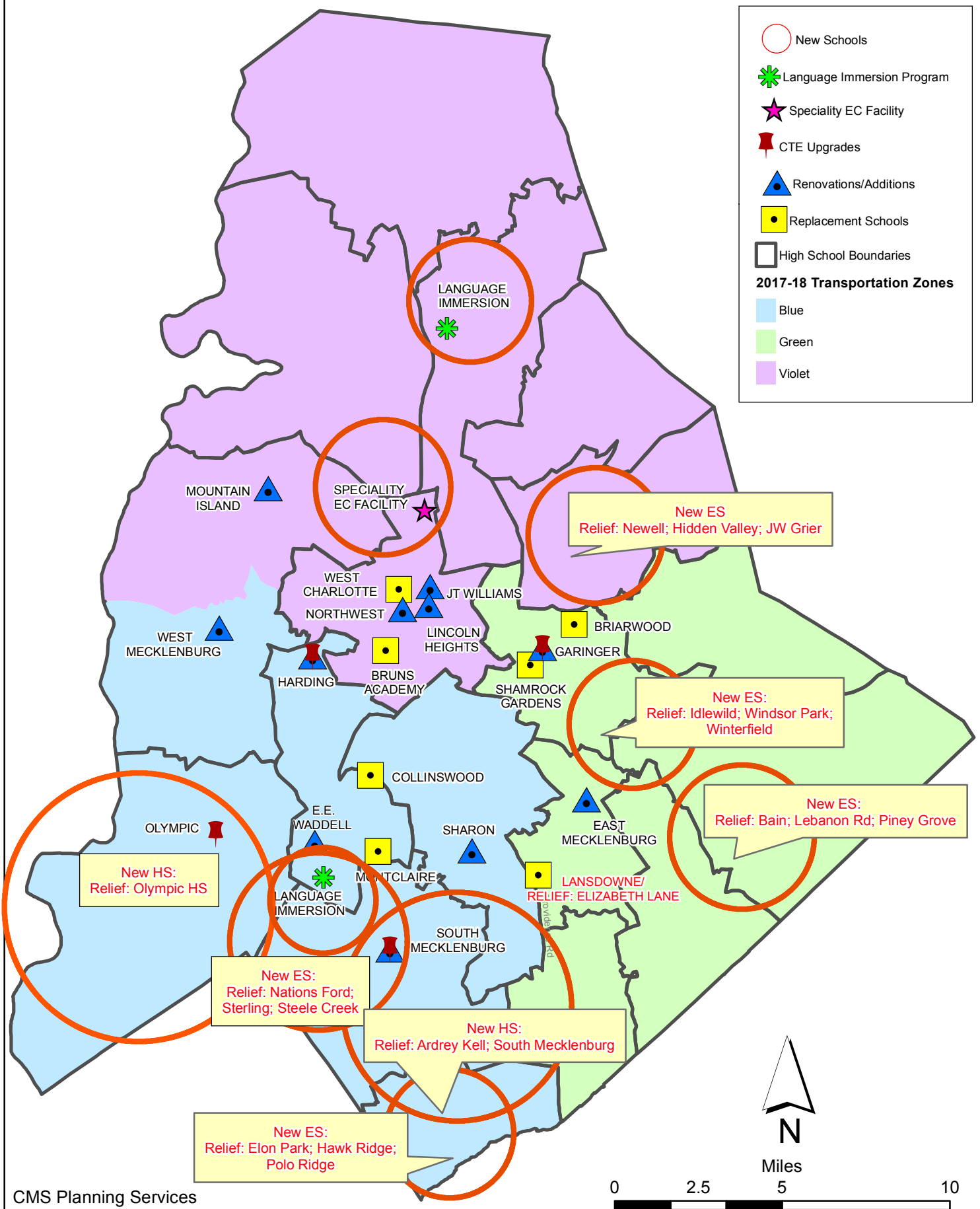
School	Turnover Year	Architect	General Contractor
Briarwood Elementary School Replacement (17)	Aug-21	ADW	New Atlantic Contracting
Montclair Elementary School (17)	Aug-21	WHN	Messer Construction
North Academy of World Languages (17)	Aug-21	ADW	New Atlantic Contracting
Sharon Elementary School (17)	Aug-21	Clark Nexsen	Samet
South Academy of International Languages (17)	Aug-21	FWA	Messer Construction
South Pine Academy (17)	Aug-21	FWA	Metcon
West Mecklenburg Gym (17)	Aug-21	Moseley	Barnhill/D.A. Everett
Collinswood Language Academy (17)	Aug-20	Perkins Eastman	Turner Construction
Harding High School Renovation (17)	Aug-20	SFLA	Barnhill Contracting
Rea Farms STEAM Academy (13)	Aug-20	Little Diversified	Balfour Beatty
Ashley Park K-8 Conversion (13)	Aug-19	ADW	Turner Construction
Druid Hills K-8 Conversion (13)	Aug-19	ADW	Edifice, Inc.
Selwyn Elementary (13)	Aug-19	Clark Nexsen	Balfour Beatty
Charlotte Mecklenburg Academy (17)	Aug-19	KSQ	Edifice, Inc.
Davidson K-8 (13)	Aug-19	Little Diversified	Gilbane
CTE - North Mecklenburg High (13)	Aug-19	LS3P	Shiel Sexton
CTE - Garinger (13)	Mar-19	LS3P	Hostetter & Son
CTE - Independence (13)	Mar-19	LS3P	D.E. Brown
CTE - West Mecklenburg (13)	Mar-19	LS3P	Hostetter & Son
Charlotte East Language Academy (13)	Aug-18	Morris Berg	Edifice, Inc
Myers Park High School Phase 3 (13)	Aug-18	Boomerang Design	BE&K
Northridge Middle (13)	Aug-18	Morris Berg	Barnhill Contracting
Myers Park High Bldg 2 (13)	Feb-18	Boomerang Design	BE&K
East Mecklenburg High Addition (13)	Jan-18	Bergman (fna Gantt Huberman)	Edifice, Inc.
J.M. Alexander Middle (13)	Aug-17	FWA Group	Balfour Beatty
Northwest School of the Arts Renovation (13)	Aug-17	Moseley	Turner Construction
Renaissance West STEAM Academy (13)	Aug-17	Little Diversified	Rodgers Construction
South Mecklenburg High Addition (13)	Jul-17	SFLA	Barnhill Contracting
Myers Park High Bldg 1 (13)	Sep-16	Boomerang	KBR
Statesville Road Elementary (13)	Aug-16	ADW	JE Dunn
Nations Ford Elementary (13)	Aug-16	Wash Hatem Nelson	Messer Construction
Olympic High Addition (13)	Aug-16	McMillan, Pazdan, Smith	Turner Construction
Lawrence Orr Elementary (07)	Aug-15	Cort Architectural Group	DH Griffin/Metcon
Parkside Elementary (07)	Aug-15	Wash Hatem Nelson	Clancy & Theys
Hawthorne High Renovations (07)	Aug-15	Morris-Berg	Balfour Beatty
Newell Elementary (07)	Aug-15	Perkins Eastman	New Atlantic Contracting
Ranson Middle (07)	Aug-15	Morris-Berg	Edifice, Inc.
Vance High	Jan-15	LS3P	Matthews Construction Co., Inc.
Garinger High - Renovations/Addition	Aug-14	Adams Group Architects	Turner Construction
Olympic High - Stadium	Aug-14	Site Solutions	Turner Construction
West Mecklenburg High - Stadium	Aug-14	Site Solutions	Turner Construction
Collinswood - Indoor Air Quality	Aug-14	PEA	The Bowers Group
Lansdowne - Indoor Air Quality	Aug-14	AeroRaq	Tyler 2
McKee Road - Indoor Air Quality	Aug-14	McCracken & Lopez	Godfrey Construction
Garinger High - Track & Field	Jul-14	Site Solutions	Turner Construction
Independence High - Gym	Jun-14	Shook Kelly	Shelco, Inc. (CM)
Palisades Park Elementary	May-14	Wash Hatem Nelson	Clancy & Theys
East Mecklenburg High Auditorium	Jan-14	Gantt Huberman Associates	Godfrey Construction Co., Inc.
Pineville Elementary	Aug-13	Cort Architectural Group	Beam Construction Co., Inc.
Bain Elementary	Aug-13	ADW	Edison Foard
Grand Oak Elementary	Aug-13	ADW	Matthews Construction Co., Inc.
McClintock Middle	Aug-13	FWA Group	Shelco, Inc.

Capital Improvements Program
Projects Substantially Completed/Closed *

School	Turnover Year	Architect	General Contractor
Sedgefield Elementary Demolition	Oct-12	Cort Architectural Group	EHG, LLC
Alexander Graham Middle Gym Reno	Aug-12	MBAJ Architecure	Edison Foard
First Ward - Demolition & Bus lot	Aug-12	MBAJ Architecure	T.K. Browne
South Meck High Parking Lot Renovation	Aug-12	Little Diversified	Sorenson Gross
Cochrane Middle - Kitchen	Aug-11	MBAJ Architecure	Sorenson Gross
Hough High	Aug-10	Little Diversified	Rodgers Construction
Rocky River High	Aug-10	Little Diversified	Balfour Beatty

Projects closed prior to 2010 are not shown

CMS Capital Improvement Plan 2017 Bond Projects



PROJECT STATUS REPORT



Monthly Project Status 2017 Bond Summary

October 2021

Project	Current Project Estimate	Project Scope	** Occupy On	Design Phase	Construction Progress	Project Status
Briarwood Elementary School (17)	\$ 31,962,730	45-classroom replacement facility; replaces school built in 1956.	August 2021	Complete	93 %	The Briarwood Elementary Replacement School's construction manager completed the demolition of the existing buildings and continues with the slab and foundation removal. The site work contractor mobilized to begin the installation of the new storm drainage piping and stormwater pond structure. The remaining site work is scheduled to be completed in 2022.
Bruns Academy (17)	\$ 39,784,927	New 45-classroom elementary school (K-5); replaces old school built in 1969.	August 2024	Not Started	0 %	This project is scheduled to start design Spring 2022.
Career and Technology Education (17)	\$ 10,159,765	Phase I CTE upgrades at Olympic, Harding, Garinger and South Mecklenburg.	January 2022	Complete	45 %	The CTE projects at Harding and South Mecklenburg continue to progress. The above ceiling rough-ins are progressing at Harding and the lay-in ceiling grid is complete at South Mecklenburg. The kitchen hood is also installed and quarry tile flooring is underway. The project team is working through kitchen equipment shipping issues and may have to substitute or provide temporary equipment to open for students and staff. The Harding project consists of renovations to existing classrooms in the auditorium building to develop a suite of technology classrooms. The project at South Mecklenburg consists of renovating the old kitchen area into a culinary arts lab and classroom. Both projects are scheduled for completion in January 2022.
Charlotte-Mecklenburg Academy (17)	\$ 17,699,220	New EC school located on the old Statesville Elementary School site.	August 2019	Complete	100 %	Project is complete.
Collinswood Language Academy (17)	\$ 41,547,540	New 63-classroom K-8 facility on the site of the Smith Family Center.	August 2020	Complete	100 %	Project is complete.

Monthly Project Status

2017 Bond Summary

October 2021

Project	Current Project Estimate	Project Scope	** Occupy On	Design Phase	Construction Progress	Project Status
E.E. Waddell (17)	\$ 5,137,367	Repurpose current E.E. Waddell to reopen as a magnet high school.	August 2023	Construction Documents	0 %	The E.E. Waddell High School project continues to progress in the construction document phase and the development of bid documents for the project. The project consists of light renovations to the existing science classrooms, maker space, lobby, HVAC work, limited VCT and acoustical ceilings. This project is scheduled to start construction summer of 2022.
East Mecklenburg High School (17)	\$ 15,058,594	This project will provide for the design, and construction of a new 30 classroom building.	August 2022	Complete	25 %	The construction manager for East Mecklenburg High School completed the third floor elevated slab pour and the second floor elevated slab pour will follow. Structural steel frame has progressed to roof deck.
Garinger High School (17)	\$ 5,986,979	Project includes the design and construction for renovations of 300 building and a new 16 classroom building.	January 2023	Complete	16 %	The Garinger Addition and Renovation construction manager completed the installation of structural steel and slab on grade. The mason continued installation of interior CMU walls at the mechanical, electrical and restrooms. The addition is scheduled to be occupied August 2022 and the renovation to be occupied in January 2023.
Harding High School (17)	\$ 13,805,263	Renovation of the kitchen, cafeteria, existing gym (aux) and the addition of a new gym.	August 2020	Complete	100 %	Construction Manager has change items that will be completed summer 2021 and is finalizing financial reconciliation.
JT Williams (17)	\$ 15,732,600	Project includes building renovations to J.T. Williams Montessori magnet.	August 2024	Design Development	0 %	The JT Williams Secondary Montessori project continues in the design development phase. The architect's submittal is due mid-November for review and comments. The project's scope focuses on required civil improvements, architectural and MEP renovations.

Monthly Project Status

2017 Bond Summary

October 2021

Project	Current Project Estimate	Project Scope	** Occupy On	Design Phase	Construction Progress	Project Status
Lansdowne Elementary School (17)	\$ 35,378,834	New 45-classroom school; replaces old school built in 1959 and relieve crowding at Elizabeth Lane ES.	August 2022	Complete	49 %	The Lansdowne Elementary School construction manager has started the brick veneer at multiple elevations. The new building shell is complete and roofing installed on some areas. The interior metal stud framed walls are also progressing. The MEP contractors are working throughout on in-wall and above ceiling rough-ins. The site contractor has completed setting the stone for the staff parking lot which sits on top of the underground storm water detention pond. Occupancy of the replacement school is scheduled for August 2022. Upon completion of the new building, demolition and remaining site work will commence and be completed in 2023.
Lincoln Heights Elementary School (17)	\$ 4,588,675	Repurpose and reopen as magnet school.	August 2023	Construction Documents	0 %	Shamrock Gardens will be utilizing the Lincoln Heights Elementary building as swing space August 2020 - August 2022. Playgrounds were replaced and new digital signage was installed summer 2020. Based on Board approval in May 2021 the occupancy date has been moved to 2023.
Montclair Elementary School (17)	\$ 28,559,390	New 45-classroom replacement facility replacing school built in 1958.	August 2020	Complete	99 %	This month the construction manager for the Montclair Elementary School completed the final phase of work on the project. The new 45-classroom elementary school building was occupied in August.
Mountain Island Lake Academy (17)	\$ 10,488,400	K-8 Phase 2 - New gymnasium and specialty classrooms.	August 2023	Design Development	0 %	The Mountain Island Lake Academy project continues to progress in the design development phase. This project consists of a building addition containing a middle school gymnasium and visual and performing arts classrooms. To address long lead time concerns the development of an early steel and roof procurement package are in progress. This project is scheduled to start in the spring of 2022

Monthly Project Status

2017 Bond Summary

October 2021

Project	Current Project Estimate	Project Scope	** Occupy On	Design Phase	Construction Progress	Project Status
New Elementary School (Bain, Lebanon, Piney Grove) (17)	\$ 30,455,951	New 45-classroom elementary school; relieves crowding at Bain, Lebanon Road, Piney Grove.	August 2022	Complete	33 %	The New Elementary School (Bain, Lebanon, Piney Grove Relief) construction manager has completed most of the slab on grade and elevated slab pours. The mason continues with load bearing masonry construction. The steel erector remains on site and has continued setting steel framed portions of the building as materials are delivered. The MEP trades continued on site with wall and above ceiling rough-ins. The site contractor is working on underground storm water piping and erosion control. The team has received a preliminary design to review for the required signal at the school entrance. This new 45-classroom school will be located next to the existing Mint Hill Middle School.
New Elementary School (Elon, Hawk Ridge, Polo Relief) (17)	\$ 50,856,961	New 45-classroom elementary school to relieve Elon, Hawk Ridge, Polo.	August 2023	Construction Documents	0 %	The New Elementary School (Elon, Hawk Ridge, Polo Relief) project continues to progress in the construction document phase. The NCDOT/CDOT traffic study continues to progress with its development. The second round of rezoning comments have been received and returned for review/approval. The structural steel and roofing packages for the building have been approved by the BOE. The bid and award of the remainder of project will occur early in 2022.
New Elementary School (Hidden Valley, JW Grier, Newell) (17)	\$ 40,197,022	New 45-classroom elementary school; relieves overcrowding at Hidden Valley, J.W. Grier, Newell.	August 2023	Construction Documents	0 %	The New Elementary School (Hidden Valley, JW Grier, Newell Relief) project continues to progress in the construction document phase. The traffic analysis draft is under development and scheduled to be completed by mid-November. The project is currently bidding long lead scopes of work, including steel and roofing packages. These bids are scheduled to be received in mid November and submitted to the BOE for approval in December. The remainder will bid and award in the spring of 2022.

Monthly Project Status

2017 Bond Summary

October 2021

Project	Current Project Estimate	Project Scope	** Occupy On	Design Phase	Construction Progress	Project Status
New Elementary School (Windsor, Winterfield, Idlewild Relief) (17)	\$ 42,697,022	New 45-classroom elementary school to relieve Windsor, Winterfield, and Idlewild ES.	August 2023	Design Development	0 %	The New Elementary School (Windsor, Winterfield, Idlewild Relief) project architect has submitted the design development documents to CMS for review and comments. The development of the individual permit for Corps of Engineers continues to progress and the traffic engineer has begun their traffic memorandum study. The early steel and roofing packages are scheduled to receive bids in mid November, and submitted to the BOE for approval in December. The remainder will bid and awards will occur in the spring of 2022.
New High School (17) (Olympic Relief)	\$ 109,908,793	New 100 classroom high school; relieves crowding at Olympic High School.	August 2022	Complete	79 %	The construction manager for the New High School Olympic Relief completed the installation of exterior metal studs and interior along with the exterior sheathing. The installation of exterior brick and metal panels continued. Installation of paint allowed the ceiling grid to be installed followed by light fixtures and HVAC diffusers. The casework installer mobilized and began in the classroom buildings. MEP trades continued with installations throughout the building. The landscaper installed sod, grass seed and plants. Curb and gutter continued along with the base pavement in the parking lots and access roads. Areas were prepped for the concrete sidewalks and planting beds. The track was paved and prepped for the track surface. Once the surface is installed the turf can be installed on the field.
New High School (South, Ardrey) (17)	\$ 154,930,460	New 100 classroom high school to relieve South Mecklenburg, Ardrey Kell and Myers Park HS.	August 2024	Construction Documents	0 %	The New High School (South, Ardrey Kell Relief) project has moved into the permitting and procurement phases. The architect has submitted construction documents to CMS and LUESA for review and comments. The second round of rezoning comments have been returned for review/ approval. Army Corps of Engineers permit continues in its review process and is expected to receive approval in November. The construction manager has begun procurement/prequalification activities of subcontractors for the project.

Monthly Project Status

2017 Bond Summary

October 2021

Project	Current Project Estimate	Project Scope	** Occupy On	Design Phase	Construction Progress	Project Status
North Academy of World Languages	\$ 42,359,367	New 66 classroom K-8 Language Immersion facility located on the old J.M. Alexander Middle School site.	August 2021	Complete	99 %	The project closeout and final financial reconciliation process with the construction manager is underway.
Northwest School of the Arts (17)	\$ 20,467,000	Replace classroom building built in 1952 and build classroom addition that supports program.	August 2024	Not Started	0 %	Design to start in early 2022.
Shamrock Gardens Elementary School (17)	\$ 32,358,351	New 45-classroom replacement facility.	August 2022	Complete	54 %	The Shamrock Gardens Elementary School construction manager continued with the installation of the exterior metal studs, sheathing, spray foam and brick veneer. The MEP trades continued with wall and overhead rough-ins throughout the building. Interior stud framing continued in the classroom wing and drywall installations began in approved areas. Landscaping continued in available areas.
Sharon Elementary School (17)	\$ 9,475,862	Add 16 classroom building and increase capacity of cafeteria.	August 2021	Complete	99 %	The project closeout and final financial reconciliation process with the construction manager is underway.
South Academy of International Languages (fka New K-8 School (South) (17)	\$ 41,959,367	New 71 classroom K-8 Language Immersion facility located on the old Nations Ford Elementary School site.	August 2021	Complete	99 %	The project closeout and final financial reconciliation process with the construction manager is underway.
South Mecklenburg High School (17)	\$ 15,622,927	Renovate/replace two classroom buildings built in 1958 to upgrade learning conditions.	January 2025	Not Started	0 %	Planning underway, design to start in 2022.
South Pine Academy	\$ 31,272,550	New 45-classroom elementary school to relieve Nations Ford, Sterling, and Steele Creek.	August 2021	Complete	99 %	The project closeout and final financial reconciliation process with the construction manager is underway.

Monthly Project Status

2017 Bond Summary

October 2021

Project	Current Project Estimate	Project Scope	** Occupy On	Design Phase	Construction Progress	Project Status
West Charlotte High School (17)	\$ 109,977,166	New 100 classroom school to replace current facility built in 1954.	August 2022	Complete	65 %	The trade contractors continue to work throughout the West Charlotte High School facility. The interior finishes have progressed in many areas including setting equipment and finish painting. The vinyl composition tile (VCT) has also started in multiple areas of the building. Ceiling grid installation has also progressed allowing above ceiling rough-ins to progress. The MEP trades continue to set fixtures and the casework installation crew has mobilized and started setting cabinets. The site contractor has paved the new bus parking lot. The stadium light poles have been set and light fixtures will follow. The project team continues to work through supply chain logistics and issues with material availability. The project is scheduled to be occupied August 2022. Once the new school is occupied the existing school will be demolished and final site work will take place with final project completion in August 2023.
West Mecklenburg High School (17)	\$ 10,850,902	Provide new gymnasium, the existing gymnasium will become the auxilliary.	August 2021	Complete	99 %	The project closeout and final financial reconciliation process with the construction manager is underway.

MONTHLY PROJECT PHOTOS

PROJECT PROGRESS PHOTOS



New High School Olympic Relief

PROJECT PROGRESS PHOTOS



New High School Olympic Relief

PROJECT PROGRESS PHOTOS



New High School Olympic Relief

PROJECT PROGRESS PHOTOS



New High School Olympic Relief

PROJECT PROGRESS PHOTOS



New High School Olympic Relief

PROJECT PROGRESS PHOTOS



West Charlotte High School Replacement

PROJECT PROGRESS PHOTOS



West Charlotte High School Replacement

PROJECT PROGRESS PHOTOS



West Charlotte High School Replacement

PROJECT PROGRESS PHOTOS



West Charlotte High School Replacement

PROJECT PROGRESS PHOTOS



West Charlotte High School Replacement

PROJECT PROGRESS PHOTOS



Shamrock Gardens Elementary School

PROJECT PROGRESS PHOTOS



Shamrock Gardens Elementary School

PROJECT PROGRESS PHOTOS



Shamrock Gardens Elementary School

PROJECT PROGRESS PHOTOS



Shamrock Gardens Elementary School

PROJECT PROGRESS PHOTOS



Lansdowne Elementary School

PROJECT PROGRESS PHOTOS



Lansdowne Elementary School

PROJECT PROGRESS PHOTOS



Lansdowne Elementary School

PROJECT PROGRESS PHOTOS



Lansdowne Elementary School

PROJECT PROGRESS PHOTOS



East Mecklenburg High School

PROJECT PROGRESS PHOTOS



East Mecklenburg High School

PROJECT PROGRESS PHOTOS



East Mecklenburg High School

PROJECT PROGRESS PHOTOS



New ES (Bain, Lebanon, Piney Grove Relief)

PROJECT PROGRESS PHOTOS



New ES (Bain, Lebanon, Piney Grove Relief)

PROJECT PROGRESS PHOTOS



New ES (Bain, Lebanon, Piney Grove Relief)

PROJECT PROGRESS PHOTOS



New ES (Bain, Lebanon, Piney Grove Relief)

PROJECT PROGRESS PHOTOS



Garinger High School

PROJECT PROGRESS PHOTOS



Garinger High School

PROJECT PROGRESS PHOTOS



Garinger High School

MWSBE PARTICIPATION REPORT

Contract Status Report - MWSBE Participation Commitments

Report Date 11/15/2021

Charlotte-Mecklenburg Schools

11/15/2021 1:33:37 PM

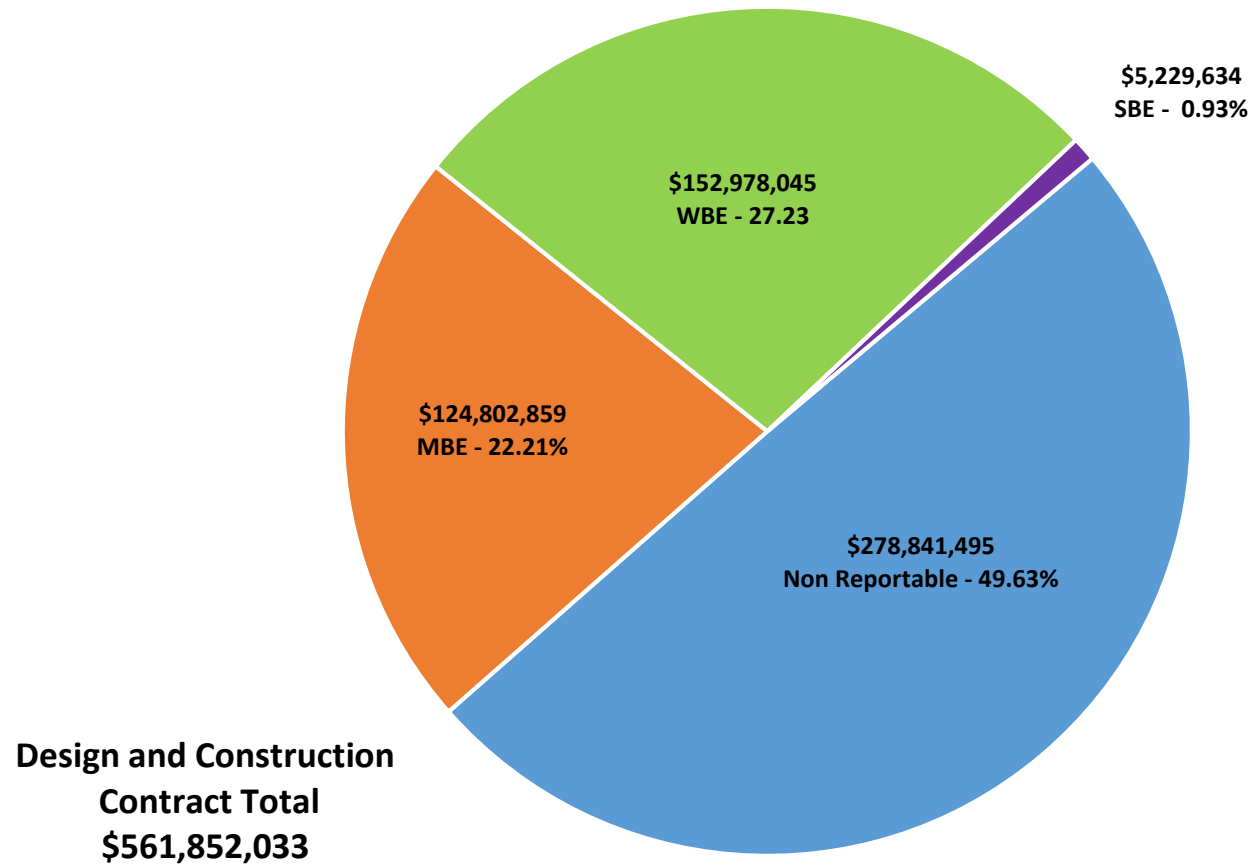
2017 Bond Projects

October 2021 Monthly Bond Report

Facility	Contract Amount	African American MBE\$	%	Other MBE \$	%	Total MBE \$	%	Other WBE \$	%	Other SBE \$	%	Total	%
<u>Briarwood Elementary School (17)</u>	\$28,723,186	\$4,011,116	13.96%	\$2,424,277	8.44%	\$6,435,393	22.40%	\$1,878,126	6.54%	\$152,902	0.53%	\$8,466,421	29.48%
<u>Career and Technology Education (17)</u>	\$5,918,771	\$549,026	9.28%	\$300,652	5.08%	\$849,678	14.36%	\$246,751	4.17%	\$65,475	1.11%	\$1,161,903	19.63%
<u>Charlotte-Mecklenburg Academy (17)</u>	\$17,035,852	\$198,536	1.17%	\$1,029,192	6.04%	\$1,227,728	7.21%	\$872,755	5.12%	\$13,200	0.08%	\$2,113,683	12.41%
<u>Collinswood Language Academy (17)</u>	\$38,527,740	\$649,287	1.69%	\$1,613,103	4.19%	\$2,262,390	5.87%	\$11,362,566	29.49%	\$9,328	0.02%	\$13,634,284	35.39%
<u>E.E. Waddell (17)</u>	\$157,805	\$0	0.00%	\$0	0.00%	\$0	0.00%	\$10,950	6.94%	\$0	0.00%	\$10,950	6.94%
<u>East Mecklenburg High School (17)</u>	\$12,575,074	\$603,811	4.80%	\$532,460	4.23%	\$1,136,271	9.04%	\$490,382	3.90%	\$681,075	5.42%	\$2,307,728	18.35%
<u>Garinger High School (17)</u>	\$4,212,784	\$49,330	1.17%	\$412,572	9.79%	\$461,902	10.96%	\$165,433	3.93%	\$0	0.00%	\$627,335	14.89%
<u>Harding High School (17)</u>	\$13,015,986	\$1,504,505	11.56%	\$310,356	2.38%	\$1,814,862	13.94%	\$3,846,831	29.55%	\$176	0.00%	\$5,661,869	43.50%
<u>JT Williams (17)</u>	\$1,229,700	\$2,000	0.16%	\$20,000	1.63%	\$22,000	1.79%	\$0	0.00%	\$0	0.00%	\$22,000	1.79%
<u>Lansdowne Elementary School (17)</u>	\$30,617,679	\$5,566,565	18.18%	\$468,305	1.53%	\$6,034,870	19.71%	\$1,446,488	4.72%	\$223,625	0.73%	\$7,704,983	25.17%
<u>Lincoln Heights Elementary School (17)</u>	\$432,426	\$92,274	21.34%	\$18,800	4.35%	\$111,074	25.69%	\$0	0.00%	\$74,503	17.23%	\$185,577	42.92%
<u>Montclair Elementary School (17)</u>	\$26,195,769	\$3,617,952	13.81%	\$2,260,381	8.63%	\$5,878,333	22.44%	\$5,729,641	21.87%	\$518,632	1.98%	\$12,126,605	46.29%
<u>Mountain Island Lake Academy (17)</u>	\$777,565	\$0	0.00%	\$36,650	4.71%	\$36,650	4.71%	\$19,550	2.51%	\$0	0.00%	\$56,200	7.23%
<u>New Elementary School (Bain, Leban)</u>	\$26,301,565	\$4,678,087	17.79%	\$18,841,591	71.64%	\$23,519,678	89.42%	\$1,214,672	4.62%	\$308,680	1.17%	\$25,043,030	95.21%
<u>New Elementary School (Elon, Hawk)</u>	\$1,978,935	\$0	0.00%	\$0	0.00%	\$0	0.00%	\$61,240	3.09%	\$0	0.00%	\$61,240	3.09%
<u>New Elementary School (Hidden Vall)</u>	\$2,064,531	\$0	0.00%	\$99,674	4.83%	\$99,674	4.83%	\$35,500	1.72%	\$25,600	1.24%	\$160,774	7.79%
<u>New Elementary School (Windsor, W)</u>	\$3,407,630	\$1,456,670	42.75%	\$258,000	7.57%	\$1,714,670	50.32%	\$167,400	4.91%	\$0	0.00%	\$1,882,070	55.23%
<u>New High School (17) (Olympic Relief)</u>	\$98,154,986	\$13,312,696	13.56%	\$5,874,324	5.98%	\$19,187,020	19.55%	\$8,458,793	8.62%	\$766,550	0.78%	\$28,412,363	28.95%
<u>New High School (South, Ardrey) (17)</u>	\$6,635,960	\$13,500	0.20%	\$91,000	1.37%	\$104,500	1.57%	\$507,465	7.65%	\$27,500	0.41%	\$639,465	9.64%
<u>North Academy of World Languages</u>	\$38,294,162	\$1,792,038	4.68%	\$1,575,863	4.12%	\$3,367,901	8.79%	\$2,560,867	6.69%	\$442,662	1.16%	\$6,371,430	16.64%
<u>Northwest School of the Arts (17)</u>	\$115,000	\$0	0.00%	\$0	0.00%	\$0	0.00%	\$0	0.00%	\$0	0.00%	\$0	0.00%
<u>Shamrock Gardens Elementary Scho</u>	\$27,979,335	\$2,157,264	7.71%	\$1,468,047	5.25%	\$3,625,311	12.96%	\$22,895,608	81.83%	\$275,594	0.98%	\$26,796,513	95.77%
<u>Sharon Elementary School (17)</u>	\$8,508,547	\$278,444	3.27%	\$338,513	3.98%	\$616,956	7.25%	\$926,873	10.89%	\$223,725	2.63%	\$1,767,554	20.77%
<u>South Academy of International Lang</u>	\$37,689,525	\$6,023,141	15.98%	\$2,431,071	6.45%	\$8,454,212	22.43%	\$10,755,611	28.54%	\$347,799	0.92%	\$19,557,622	51.89%

Facility	Contract Amount	African American MBE\$	%	Other MBE \$	%	Total MBE \$	%	Other WBE \$	%	Other SBE \$	%	Total	%
<u>South Mecklenburg High School (17)</u>	\$472	\$0	0.00%	\$0	0.00%	\$0	0.00%	\$0	0.00%	\$0	0.00%	\$0	0.00%
<u>South Pine Academy</u>	\$26,415,366	\$916,165	3.47%	\$19,416,086	73.50%	\$20,332,251	76.97%	\$4,342,256	16.44%	\$237,754	0.90%	\$24,912,261	94.31%
<u>West Charlotte High School (17)</u>	\$94,958,218	\$15,106,828	15.91%	\$1,519,700	1.60%	\$16,626,528	17.51%	\$72,985,172	76.86%	\$544,572	0.57%	\$90,156,272	94.94%
<u>West Mecklenburg High School (17)</u>	\$9,927,465	\$393,254	3.96%	\$489,754	4.93%	\$883,008	8.89%	\$1,997,115	20.12%	\$290,283	2.92%	\$3,170,406	31.94%
Grandtotal	\$561,852,033	\$62,972,489	11.21%	\$61,830,371	11.00%	\$124,802,859	22.21%	\$152,978,045	27.23%	\$5,229,634	0.93%	\$283,010,538	50.37%

MWSBE Participation 2017 Bond Projects



PROJECT CONTROLS

CHARLOTTE-MECKLENBURG BOARD OF EDUCATION
2013 BOND SERIES-CAPITAL IMPROVEMENT PROGRAM
BUDGET STATUS REPORT

	Original Project Budget	Current Project Budget	Committed Amount	Approved Change Orders	Total Committed	Pending Commitments	To Be Committed	Prev Paid To Date	Paid To Date	Balance To Complete	Monthly Expenditure
	(A)	(B)	(C)	(D)	(E)=C+D	(F)	(G)=(B-E-F)	(H)	(I)	(J)=(B-I)	(K)=(I-H)
<u>A. REPLACEMENT & RENOVATIONS</u>											
1 Career & Technology Education Institutes Phase 1:	\$8,640,000	\$18,697,857	\$7,066,706	\$11,381,196	\$18,447,902	\$0	\$249,955	\$8,294,461	\$8,962,633	\$9,735,223	\$668,172
2 Davidson K-8 Conversion	\$9,500,000	\$13,461,149	\$2,131,151	\$11,329,998	\$13,461,149	\$0	\$0	\$13,461,149	\$13,461,149	\$0	\$0
3 J.M. Alexander Middle Replacement	\$30,672,000	\$29,845,539	\$4,502,518	\$25,343,021	\$29,845,539	\$0	\$0	\$29,845,539	\$29,845,539	\$0	\$0
4 Nations Ford Elementary Replacement	\$19,440,000	\$19,231,603	\$3,958,869	\$15,272,733	\$19,231,603	\$0	\$0	\$19,231,604	\$19,231,604	\$0	\$0
5 Northwest School of the Arts	\$12,420,000	\$12,868,718	\$2,047,917	\$10,820,801	\$12,868,718	\$0	\$0	\$12,868,719	\$12,868,719	\$0	\$0
6 Oakhurst STEAM Magnet Elementary/Starmount	\$5,940,000	\$5,407,812	\$3,471,397	\$1,936,415	\$5,407,812	\$0	\$0	\$5,407,812	\$5,407,812	\$0	\$0
7 Pre-K-8 Conversions Phase II: Ashley Park/ Bruns	\$24,732,000	\$19,700,808	\$4,167,669	\$15,533,138	\$19,700,807	\$0	\$0	\$19,700,807	\$19,700,807	\$0	\$0
8 Selwyn Elementary	\$2,592,000	\$4,624,831	\$744,799	\$3,880,032	\$4,624,831	\$0	\$0	\$4,624,831	\$4,624,831	\$0	\$0
9 Statesville Road Elementary	\$20,340,000	\$20,648,510	\$5,081,473	\$15,567,037	\$20,648,509	\$0	\$0	\$20,648,509	\$20,648,509	\$0	\$0
Total Replacement & Renovations	\$134,276,000	\$144,486,825	\$33,172,499	\$111,064,371	\$144,236,870	\$0	\$249,955	\$134,083,430	\$134,751,602	\$9,735,223	\$668,172
<u>B. RESPONSE TO ENROLLMENT GROWTH</u>											
1 East Mecklenburg High Addition	\$12,744,000	\$10,988,287	\$3,369,684	\$7,618,603	\$10,988,287	\$0	\$0	\$10,988,287	\$10,988,287	\$0	\$0
2 Myers Park High Addition	\$22,248,000	\$11,040,942	\$1,207,493	\$9,833,448	\$11,040,942	\$0	\$0	\$11,040,941	\$11,040,941	\$0	\$0
3 Northridge Middle Addition	\$6,448,000	\$6,366,170	\$2,114,306	\$4,251,865	\$6,366,171	\$0	\$0	\$6,366,171	\$6,366,171	\$0	\$0
4 Olympic High Addition/Renovation	\$8,964,000	\$8,947,310	\$2,002,694	\$6,944,615	\$8,947,310	\$0	\$0	\$8,947,310	\$8,947,310	\$0	\$0
5 South Mecklenburg High Addition	\$18,360,000	\$16,307,355	\$2,922,282	\$13,385,073	\$16,307,355	\$0	\$0	\$16,307,355	\$16,307,355	\$0	\$0
6 Charlotte East Language Academy (FKA -New Lang	\$30,376,000	\$31,387,929	\$5,740,182	\$25,647,747	\$31,387,929	\$0	\$0	\$31,387,929	\$31,387,929	\$0	\$0
7 Rea Farms STEAM Academy	\$31,376,000	\$40,476,000	\$9,134,265	\$30,187,065	\$39,321,330	(\$5,460)	\$1,160,130	\$38,832,660	\$38,869,579	\$1,606,421	\$36,919
8 Renaissance West STEAM Academy (FKA New Pre-	\$30,376,000	\$31,698,952	\$5,667,388	\$26,031,564	\$31,698,952	\$0	\$0	\$31,698,952	\$31,698,952	\$0	\$0
Total Response to Enrollment Growth	\$160,892,000	\$157,212,946	\$32,158,295	\$123,899,981	\$156,058,275	(\$5,460)	\$1,160,131	\$155,569,604	\$155,606,523	\$1,606,422	\$36,919
<u>C. CONTINGENCY</u>											
	\$0	\$0	\$0	\$0	\$0	\$0	\$0	\$0	\$0	\$0	\$0
Total Contingency	\$0	\$0	\$0	\$0	\$0	\$0	\$0	\$0	\$0	\$0	\$0
TOTAL LOCAL BOND PROGRAM	\$295,168,000	\$301,699,771	\$65,330,794	\$234,964,352	\$300,295,145	(\$5,460)	\$1,410,086	\$289,653,035	\$290,358,126	\$11,341,645	\$705,091

Original project estimated costs approved by the Board Of Education on July 23, 2013 and approved by the voters of Mecklenburg County on November 5, 2013.

Note: Mecklenburg County's appropriated interest from COPS to increase funding for the 2013 Bond Program.

CHARLOTTE-MECKLENBURG BOARD OF EDUCATION
2017 BOND SERIES-CAPITAL IMPROVEMENT PROGRAM
BUDGET STATUS REPORT

	Original Project Budget	Current Project Budget	Committed Amount	Approved Change Orders	Total Committed	Pending Commitments	To Be Committed	Prev Paid To Date	Paid To Date	Balance To Complete	Monthly Expenditure
	(A)	(B)	(C)	(D)	(E)=(C+D)	(F)	(G)=(B-E-F)	(H)	(I)	(J)=(B-I)	(K)=(I-H)
A. REPLACEMENT & RENOVATIONS											
1 Briarwood Elementary *	\$29,091,619	\$31,962,730	\$4,973,893	\$26,609,642	\$31,583,535	\$167,249	\$211,946	\$26,565,549	\$27,425,440	\$4,537,290	\$859,890
2 Bruns Academy Replacement	\$34,207,808	\$39,784,927	\$1,433,024	\$218,050	\$1,651,074	\$0	\$38,133,853	\$0	\$0	\$39,784,927	\$0
3 Career & Technology Education Upgrades	\$10,101,734	\$10,159,765	\$2,326,872	\$4,099,152	\$6,426,024	\$77,334	\$3,656,407	\$2,713,539	\$3,220,498	\$6,939,267	\$506,959
4 Collinswood K-8 *	\$44,172,540	\$41,547,540	\$5,014,769	\$36,476,435	\$41,491,204	\$0	\$56,336	\$41,384,602	\$41,384,602	\$162,938	\$0
5 East Mecklenburg HS	\$12,771,594	\$15,058,594	\$1,942,052	\$11,467,595	\$13,409,647	(\$4,960)	\$1,653,907	\$4,166,832	\$4,669,853	\$10,388,741	\$503,020
6 Garinger HS	\$13,936,979	\$5,986,979	\$1,490,719	\$3,475,359	\$4,966,078	\$12,168	\$1,008,733	\$260,310	\$334,014	\$5,652,965	\$73,704
7 Harding University High *	\$18,330,263	\$13,805,263	\$2,047,347	\$11,722,683	\$13,770,031	\$0	\$35,232	\$13,532,916	\$13,653,838	\$151,425	\$120,923
8 Charlotte-Mecklenburg Academy (FKA -EC Specialty	\$18,957,960	\$17,699,220	\$2,175,504	\$15,523,717	\$17,699,220	\$0	\$0	\$17,699,220	\$17,699,220	\$0	\$0
9 Lansdowne Elementary	\$29,391,270	\$35,378,834	\$4,498,235	\$28,400,521	\$32,898,756	\$16,500	\$2,463,578	\$11,875,265	\$13,901,894	\$21,476,940	\$2,026,629
10 Lincoln Heights Elementary	\$3,740,478	\$4,588,675	\$577,649	\$26,774	\$604,423	\$0	\$3,984,252	\$383,738	\$383,738	\$4,204,937	\$0
11 Montclair Elementary Replacement *	\$28,559,390	\$28,559,390	\$2,426,903	\$26,050,937	\$28,477,839	\$0	\$81,551	\$27,949,025	\$28,106,282	\$453,108	\$157,257
12 Mountain Island k-8	\$9,218,439	\$10,488,400	\$1,153,846	\$6,930	\$1,160,776	\$0	\$9,327,624	\$110,671	\$228,155	\$10,260,245	\$117,485
13 Northwest School of the Arts	\$17,632,202	\$20,467,000	\$846,736	\$117,644	\$964,380	\$0	\$19,502,620	\$0	\$0	\$20,467,000	\$0
14 Shamrock Gardens Elementary *	\$29,890,351	\$32,358,351	\$4,050,019	\$26,053,763	\$30,103,782	\$25,803	\$2,228,766	\$10,405,860	\$13,983,048	\$18,375,303	\$3,577,188
15 Sharon Elementary	\$7,706,528	\$9,475,862	\$1,443,396	\$7,666,919	\$9,110,315	\$27,000	\$338,547	\$8,564,721	\$8,584,626	\$891,236	\$19,905
16 South Mecklenburg HS	\$13,352,143	\$15,622,927	\$554,114	\$94,238	\$648,352	\$0	\$14,974,575	\$2,362	\$2,362	\$15,620,565	\$0
17 E.E. Waddell Magnet HS	\$4,571,709	\$5,137,367	\$347,531	\$0	\$347,531	\$0	\$4,789,836	\$79,422	\$86,187	\$5,051,180	\$6,765
18 West Charlotte HS Replacement	\$109,977,166	\$109,977,166	\$12,659,556	\$88,181,557	\$100,841,113	\$152,905	\$8,983,148	\$57,578,399	\$60,490,440	\$49,486,726	\$2,912,041
19 West Mecklenburg HS	\$11,065,440	\$10,850,902	\$1,660,207	\$8,788,782	\$10,448,989	\$56,656	\$345,257	\$9,012,921	\$9,034,662	\$1,816,240	\$21,741
20 John Taylor Williams	\$13,964,339	\$15,732,600	\$1,809,220	\$0	\$1,809,220	\$0	\$13,923,380	\$120,883	\$233,283	\$15,499,318	\$112,400
Total Replacement & Renovations	\$460,639,952	\$474,642,492	\$53,431,590	\$294,980,697	\$348,412,287	\$530,656	\$125,699,549	\$232,406,236	\$243,422,142	\$231,220,350	\$11,015,906
B. RESPONSE TO ENROLLMENT GROWTH											
1 South Academy of International Languages	\$45,359,367	\$41,959,367	\$6,019,507	\$35,673,741	\$41,693,248	\$0	\$266,119	\$39,652,822	\$39,669,517	\$2,289,850	\$16,694
2 North Academy of World Languages (FKA - New K-8	\$45,359,367	\$42,359,367	\$6,278,228	\$35,941,776	\$42,220,004	\$40,275	\$99,088	\$40,955,190	\$41,050,001	\$1,309,366	\$94,811
3 South Pine Academy (FKA - New ES Nations Ford, S	\$29,173,829	\$31,272,550	\$6,785,484	\$24,425,881	\$31,211,365	\$2,450	\$58,734	\$26,858,654	\$27,336,793	\$3,935,757	\$478,139
4 New Elementary School - Bain/Lebanon Relief	\$29,988,332	\$30,455,951	\$3,784,664	\$24,530,000	\$28,314,664	\$12,000	\$2,129,287	\$5,868,076	\$7,120,584	\$23,335,367	\$1,252,508
5 New Elementary School - Windsor Park Relief *	\$30,422,230	\$42,697,022	\$4,660,544	\$194,014	\$4,854,558	\$73,040	\$37,769,424	\$1,844,014	\$2,018,977	\$40,678,045	\$174,963
6 New Elementary School - Elon/Hawk Ridge Relief *	\$30,426,712	\$50,856,962	\$14,004,441	\$47,300	\$14,051,741	\$0	\$36,805,220	\$11,513,891	\$11,695,933	\$39,161,029	\$182,042
7 New Elementary School - Hidden Valley Relief	\$30,518,345	\$40,197,022	\$4,129,288	\$256,083	\$4,385,371	\$0	\$35,811,651	\$1,662,032	\$1,748,119	\$38,448,903	\$86,087
8 New High School - Olympic Relief	\$109,908,793	\$109,908,793	\$12,160,093	\$91,828,509	\$103,988,602	\$183,922	\$5,736,269	\$64,060,348	\$67,270,887	\$42,637,906	\$3,210,539
9 New High School - South Meck/Ardrey Kell Relief *	\$110,287,621	\$154,930,460	\$11,237,955	\$787,664	\$12,025,619	\$69,350	\$142,835,491	\$3,722,010	\$3,973,344	\$150,957,116	\$251,334
Total Response to Enrollment Growth	\$461,444,596	\$544,637,493	\$69,060,205	\$213,684,968	\$282,745,173	\$381,037	\$261,511,283	\$196,137,037	\$201,884,154	\$342,753,339	\$5,747,117
C. CONTINGENCY											
	\$0	\$0	\$0	\$0	\$0	\$0	\$0	\$0	\$0	\$0	\$0
Total Contingency	\$0	\$0	\$0	\$0	\$0	\$0	\$0	\$0	\$0	\$0	\$0

CHARLOTTE-MECKLENBURG BOARD OF EDUCATION
2017 BOND SERIES-CAPITAL IMPROVEMENT PROGRAM
BUDGET STATUS REPORT

	Original Project Budget	Current Project Budget	Committed Amount	Approved Change Orders	Total Committed	Pending Commitments	To Be Committed	Prev Paid To Date	Paid To Date	Balance To Complete	Monthly Expenditure
	(A)	(B)	(C)	(D)	(E)=C+D	(F)	(G)=(B-E-F)	(H)	(I)	(J)=(B-I)	(K)=(I-H)
TOTAL LOCAL BOND PROGRAM	\$922,084,548	\$1,019,279,985	\$122,491,795	\$508,665,665	\$631,157,460	\$911,693	\$387,210,833	\$428,543,273	\$445,306,296	\$573,973,689	\$16,763,023

Original project estimated costs approved by the Board Of Education on July 25, 2017 approved by the voters of Mecklenburg County on November 7, 2017.

*Project included in \$33.2M early funding approved by Board Of Education on August 9, 2016 and Mecklenburg Board of County Commissioners on September 6, 2016. On February 19, 2019 an additional \$8M was approved for New Elementary School - Elon/Hawk Ridge Relief site.

*Current Budget includes an additional \$89.2M to fund increase land and construction costs. The additional funds were approved by the Board of County Commissioners on June 16, 2020.

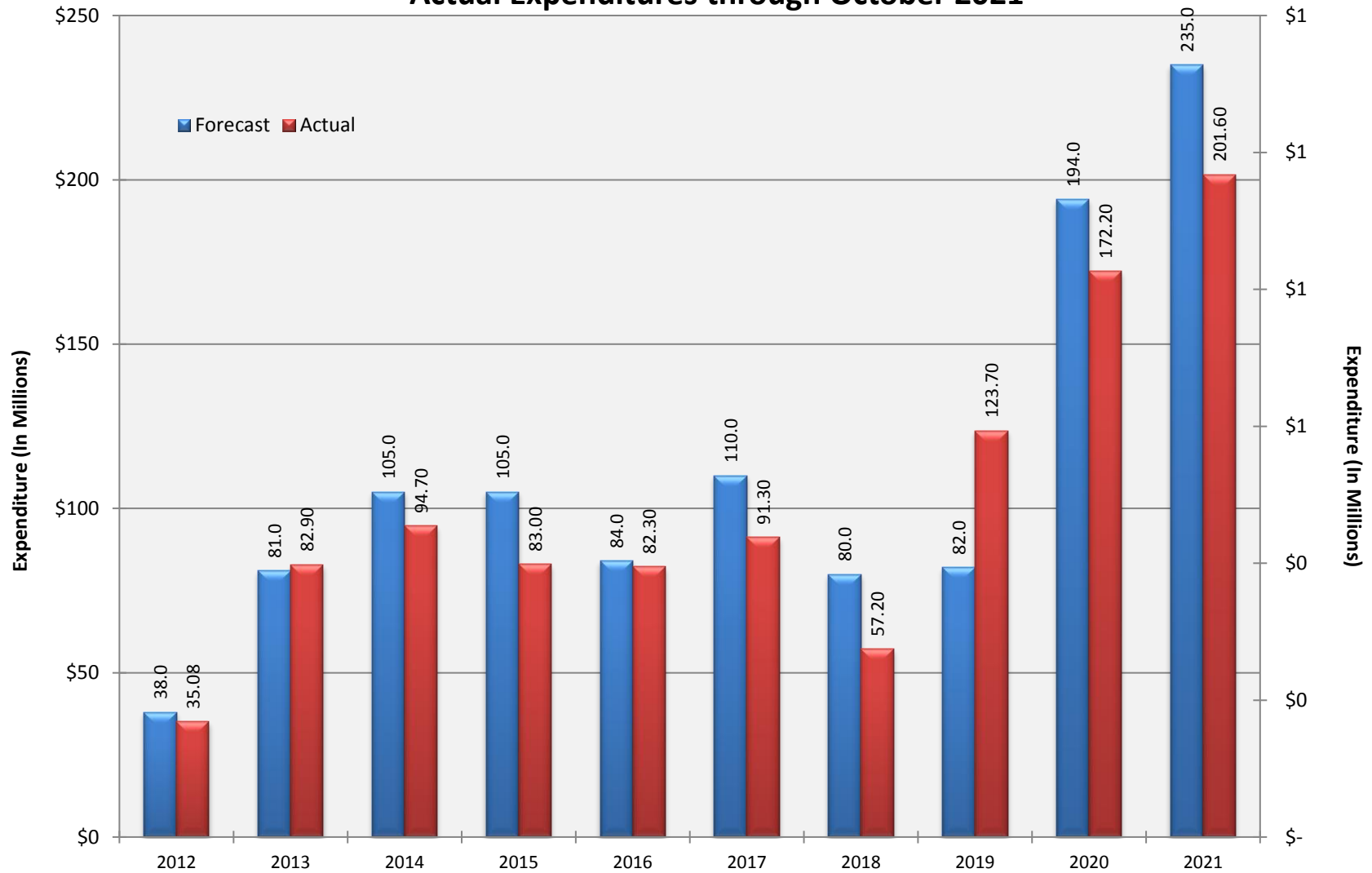
Charlotte-Mecklenburg Board of Education
Approved Construction or Repair Change Orders*
Reporting Period: October 2021

Funding Source	Project Name	Contractor	Description	Change Order Amount	Revised Contract Value
2017 Bond	North Academy of World Languages	New Atlantic Contracting, Inc.	Dedication Plaque Allowance Recon, Utilities After Substantial Completion, Extend CM General Conditions, Add Receptacle at Principal's Office, Power Supply for Helios System, TV Mounts, AT&T Curb and Sidewalk	\$59,668.00	\$37,032,647.79
2017 Bond	West Charlotte High School (17)	Rodgers-Holt Brothers, a Joint Venture	Tree at Batting Cage, Add Dampers and revise Grille, Grass along Perimeter, Relocate Temp. Fencing, ,Toilet Accessory Revision, Remove Power to Tables in A102 & B204, Duke Energy Secondary Bus Enclosure, Delete CATV Infrastructure and associated Hardware, Relocate Existing TV's from Room P-10 to the Existing Gymnasium	\$18,418.00	\$88,576,488.00

* Not previously presented to the Board of Education for Approval (less than \$90,000)

10 YEAR EXPENDITURE SUMMARY

Forecast Expenditure versus
Actual Expenditures through October 2021



GLOSSARY

Glossary

- **Project Management** – This section includes updates from our project managers and describes the currently active construction projects. This includes from Board of Education award thru final completion.
- **Design and Bidding** – This section contains updates from our design managers on the projects currently in the design phase. This phase from design award to Board of Education award of construction.
- **Controls** – Section includes misc. updates from controls group including expenditures, related Board of Education awards during the reporting period, cash flow information. This section covers all projects from approved bond through final expenditures and bond close with the county.
- **MWSBE** – Contains updates from the MWSBE Director and team, including current activity and summaries of the participation by MWSBE providers on our program.
- **Bond Progress Summary** – Provides a summary of bond financials including bond value, committed/pending amounts, paid to date, expended this month.
- **Project Procurement Dates** - Next 90 Days major project bid activity.
- **Mobile Swing Space Utilization** – Includes a summary of program related swing space currently in use and the schedule of use.
- **Bond Summary Schedule** – Current program summary schedule including planned design, construction and FF&E. These activities are fed from detailed schedules and are fine-tuned as project information is available.
- **Project Contractor Teams**; Provides summary of turnover dates for completed/closed projects since 2010 including architects/designers and contractors.
- **School Site Location Maps** – General location of bond projects (2017) by type.
- **Project Status Report** – This section of the report provides a summary of the bond project scope, current estimate (all sources), planned occupancy/actual occupancy date. It also provides a current status of the design phase, construction progress and a brief update. The report currently includes 2013 and 2017 bond projects that have or will be completed after to August 2016.
- **MWSBE Participation Report** – The MWSBE report provides a summary of the participation on the 2013 & 2017 Bond funded projects.
- **Project Progress Photos** – Includes photos of active construction projects.
- **Budget Summary Reports** – These reports are by funding source and summarize financial activity to date on the projects. This includes original and current project estimates, committed values, amounts paid to date, balances and monthly expenditures.
- **Change Orders < \$90,000** – This month's approved construction or repair change orders < \$90,000.
- **Expenditure Summary** – Provides a summary of Bond Expenditures by calendar year.