

# Capital Improvement Program

## Monthly Bond Report September 2021



South Academy of International Languages



## **CAPITAL PROGRAM SERVICES** Capital Improvement Program

### **SEPTEMBER 2021** **MONTHLY BOND REPORT**

#### **PROGRAM OVERVIEW**

- Project Management
- Design and Bidding
- Controls
- MWSBE
- Bond Progress Summary
- Project Procurement - Next 90 Days
- Swing Space Utilization
- Bond Summary Schedule
- Project Contractor Teams; Projects in Design/Construction and Substantially Completed/Closed
- School Site Location Maps
  - Elementary Schools
  - Middle Schools
  - High Schools & Specialty Schools

#### **PROJECT STATUS REPORT**

#### **MWSBE PARTICIPATION REPORT**

#### **PROJECT PROGRESS PHOTOS**

#### **PROJECT CONTROLS**

- Budget Summary Reports
  - 2013 Bond Series
  - 2017 Bond Series
- Change Orders < \$90,000
- Expenditure Summary

#### **GLOSSARY**

# PROGRAM OVERVIEW

## PROJECT MANAGEMENT

The following is a summary of the activity on the bond funded projects in construction during the month of September.

The **Briarwood Elementary Replacement School** was occupied in August. The team continues to focus on completion of the punch list and commissioning items. The construction manager completed abatement and progressed with the demolition of the existing buildings. The remaining demolition and site work is scheduled to be completed in 2022.

The **CTE projects** at **Harding and South Mecklenburg** continue to progress. The load bearing structural walls are complete and temporary shoring is being removed. The interior walls are framed and in wall rough-ins are complete and the drywall is complete at South Mecklenburg. The Harding project consists of renovations to existing classrooms in the auditorium building to develop a suite of technology classrooms. The project at South Mecklenburg consists of renovating the old kitchen area into a culinary arts lab and classroom. Harding and South Mecklenburg are scheduled for completion in January 2022.

The construction manager for **East Mecklenburg High School** completed the slab on grade pour and the structural steel erection for the three story structure is progressing. The elevated floor slabs will be poured as steel erection and decking is placed. The new classroom wing is scheduled for occupancy in August 2022.

The **Garinger Addition and Renovation** construction manager completed the under slab electrical and plumbing rough-ins and has poured the slab on grade. They continued with low voltage conduit trenches to the existing buildings that will provide the connectivity. The addition is scheduled to be occupied August of 2022 and the renovation to be occupied in January of 2023.

The **Lansdowne Elementary School** construction manager completed the slab on grade pours and is working on elevated slabs now. The electrician and plumber are coordinating with the mason for in wall rough-ins for masonry walls. The roofer and wall spray foam contractors have mobilized on site and are getting started. The site contractor completed the underground storm water detention and backfilled the area which will be paved for the staff parking lot. Occupancy of the replacement school is scheduled for August 2022. Upon completion of the new building, demolition and remaining site work will commence and will be completed in 2023.

This month the construction manager for the **Montclair Elementary School** completed the final phase of work on the project. The new 45-classroom elementary school building was occupied in August.

The **New Elementary School (Bain, Lebanon, Piney Grove Relief)** continued prepping and pouring the slab on grade. The mason is well underway with load bearing masonry walls. The steel erection for the two-story classroom wing is progressing. The electrical and plumbing contractors are also on site completing in wall rough-ins. The site contractor continues work on underground storm water lines and inlets. The front staff parking lot has the asphalt binder course installed and is being used for construction laydown as needed. The team has received a preliminary design to review for the required signal at the school entrance. This new 45-classroom school will be located next to the existing Mint Hill Middle School. The project is scheduled for occupancy in August 2022.

The construction manager for the **New High School Olympic Relief** continued throughout the building with exterior and interior metal studs and drywall installation. The mechanical, electrical and plumbing (MEP) trades continued with above ceiling and in-wall rough in while focusing on work in the mechanical and electrical rooms. They continue to utilize temporary air conditioning units throughout the facility to allow finish work to begin while waiting on the permanent system to come online. Drywall continued to be installed on multiple floors of the classroom and administration wing. The painter continued throughout the building with block fill and the first coat of paint. The

pool contractor progressed with pouring the walls of the pool. The field contractor continued with the installation of the synthetic turf system and the landscaper mobilized and prepared the grass fielded for sod. The contractor continued to be focused on the maintaining the erosion control measures on the site. The 100-classroom relief high school is scheduled to be occupied in August 2022.

The **Shamrock Gardens Elementary School** construction manager mobilized multiple trades on the project during the month. The steel contractor completed the installation of the structural steel, bar joist and decking. The mason continued with brick installation throughout the exterior of the building and completed the interior CMU. Exterior studs continued on the classroom wing and interior metal studs began in the administration and first floor classroom wing. The installation of the wall insulation progressed in the available areas. The MEP trades continued throughout the building with above ceiling and in wall rough-ins. The landscaper mobilized to install areas that were available to take advantage of the fall planting season. The new 45-classroom replacement elementary school is scheduled to be occupied August 2022.

The trade contractors continue to work throughout the **West Charlotte High School** facility. The interior finishes have now started in many areas. The roof and windows are all installed and the building is dried in. The ceiling grid is progressing in many areas and lay-in lights are being installed. The plumbing and electrical contractors are setting fixtures. The mechanical contractor started the HVAC system allowing conditioned air to flow. The paint contractor is working throughout and areas have received the accent paint finishes. The site contractor installed curb and gutter and access and parking areas are being paved and also worked on hardscapes around the building including sidewalks and patios. The project team continues to work through supply chain logistics and issues with material availability. The project is scheduled to be occupied August 2022. Once the new school is occupied the existing school will be demolished and final site work will take place with final project completion in August 2023.

## DESIGN AND BIDDING

The following is a summary of the activity on the bond funded projects in design and bidding phase during the month of September.

The **E.E. Waddell High School** project continues to progress in the construction document phase. Design management staff have begun development of the bid documents for the project. The project consists of light renovations to the existing science classrooms, maker space, lobby, HVAC work, limited VCT and acoustical ceiling replacement. This project is scheduled to start construction by summer of 2022 and be completed prior to occupancy in August of 2023.

The **JT Williams Secondary Montessori** project is in the design development phase. The project's scope focuses on required civil improvements, architectural and MEP renovations. The project is scheduled to be completed in August 2024.

The **Mountain Island Lake Academy** project has progressed into the design development phase. This project consists of a building addition containing a middle school gymnasium, visual and performing arts classrooms. To address long lead time concerns the development of an early steel and roof procurement package are in progress. This project is scheduled to start in the spring of 2022 and is scheduled for completion in August 2023.

The **New Elementary School (Elon, Hawk Ridge, Polo Relief)** project has moved into the construction document phase. The NCDOT/CDOT traffic study scope was approved and the draft traffic study analysis report is progressing. The second round of rezoning comments have been received and will be returned in October for approval. The structural steel and roofing for the building is being procured early by the construction manager to address material long lead time concerns. Board approval for the early package is scheduled in late October, the bid

and award of the remainder of project will occur early in 2022. Construction is scheduled to start in the spring of 2022 and is scheduled for completion in August 2023. This new 45-classroom school will be located across from the Ardrey Kell High School.

The **New Elementary School (Hidden Valley, JW Grier, Newell Relief)** project has progressed into construction document phase. The traffic analysis scoping criteria was accepted in September by NCDOT and draft traffic study analysis report is under development and scheduled to be completed by mid-November. To address long lead time concerns the team is developing an early steel, roofing, and dewatering system package that is scheduled to bid in late November. The remainder will bid and award in the spring of 2022. This new 45-classroom school will be located next to Northridge Middle School and is scheduled for occupancy in August 2023.

The **New Elementary School (Windsor, Winterfield, Idlewild Relief)** project continues to progress in the design development phase and is scheduled to be reviewed by CMS staff in October. The development of the individual permit for Corps of Engineers continues to progress. To address long lead time concerns the team is developing an early steel, roofing, package that is scheduled to bid in late November. The remainder will bid and award in the spring of 2022. This new 45-classroom school facility is scheduled for occupancy in August 2023.

The **New High School (South, Ardrey Kell Relief)** project continues to progress in the construction document phase. The architect is scheduled to submit construction documents to CMS and LUESA for review and comments in October. The second round of rezoning comments have been received and will be returned in October for approval. CDOT has approved the traffic study analysis report. Army Corps of Engineers permit continues to progress in its approval process; final approval is expected in November. The construction manager has begun procurement strategies and activities for the project. This project consists of a new 100-classroom high school with athletic play fields and stadium.

The teams continue to review the schedules for the projects in design with the construction managers to identify and address the current material delivery delays due to supply chain issues e.g. bar joist, metal decking, roofing insulation, etc. As noted above early steel procurement packages are in progress to mitigate extended lead times.

## CONTROLS

Expenditures for the month of September were \$19.2M. This brings our fiscal year to date total to \$57.6M against the 2022 fiscal year cash flow projection of \$260M. The Controls team continues the reconciliation and closeout of completed 2013 and 2017 bond projects. Available funding is being accumulated as contingency to address potential supply chain and increased construction costs related to the COVID-19 pandemic and other escalation.

The Controls team continues to submit notices of potential changes at school sites so senior staff can adequately evaluate any issues. Additionally, the Controls team continues the processing of contracts, invoices, preparing notices of potential change, change orders, pay applications and check requests for projects under construction. Captured construction cost data is used to prepare financial reports such as detailed cost reports, budget summaries, reconciliation to CMS books, revisions to and updated cash flows and complete special financial requests by CMS and Mecklenburg County. This process, along with data compilation and management, allows senior staff to provide the proper guidance/direction and accurate information to the program stakeholders.

No Bond related consent items were submitted for Board of Education approval during the month of September 2021.

## MWSBE

As of September 2021 the overall MWSBE utilization percentage related to design and construction of the 2017 bond projects is 50.31% which includes 22.22% participation by minority contractors, 27.16% by women contractors and 0.93% participation by small business contractors. This accounts for more than \$282 million of utilization by Minority, Women and Small Business Contractors.

The Diversity & Inclusion Office of Charlotte-Mecklenburg Schools continued to conduct several individual virtual orientations with new MWSBE contractors and prime contractors. In addition, team members also attended/hosted the following outreach sessions/pre-bid meetings and/or workforce development opportunities:

- Minority Business Development Agency (MBDA) MED Week 2021 virtual conference
- New elementary Elon, Hawk Ridge and Polo Ridge Relief virtual community engagement
- HVAC Pre-bid meeting hosted by Charlotte Mecklenburg Schools
- Steel package for new elementary school Windsor Park, Winterfield and Idlewild relief hosted by Balfour Beatty
- Charlotte MED Week 2021 planning meeting

Over the next month, team members will continue to work with contractors interested in bidding on the upcoming school projects utilizing various virtual tools to communicate. Contractors are encouraged to review bid advertisements in Charlotte Observer and register as a vendor on the North Carolina Interactive Purchasing System for notification of the various opportunities.



## BOND PROGRESS SUMMARY As of September 2021

| Funding Source and Value |                        | Amount<br>Committed/Pending | Amount Paid<br>to Date | Amount Expended<br>This Period |
|--------------------------|------------------------|-----------------------------|------------------------|--------------------------------|
| 2013 Bond                | \$301,699,770          | \$300,236,782               | \$289,653,035          | <b>\$1,596,625</b>             |
| 2017 Bond                | \$1,019,279,985        | \$628,652,649               | \$428,543,273          | <b>\$17,624,962</b>            |
| <b>Grand Total</b>       | <b>\$1,320,979,755</b> | <b>\$928,889,431</b>        | <b>\$718,196,308</b>   | <b>\$19,221,587</b>            |



---

## UPCOMING MAJOR CONSTRUCTION PROCUREMENT DATES *Three Month Look Ahead*

### School Name

### Bid Dates\*

**New Elementary (Elon Park, Hawk Ridge, Polo Ridge)  
Structural Steel Package**  
*(Bids managed by Little Architectural)*

**September 2021**

**New Elementary (Hidden Valley, JW Grier, Newell)  
Structural Steel Package**  
*(Bids managed by ADW Architects)*

**November 2021**

**New Elementary (Windsor, Winterfield, Idlewild)  
Structural Steel Package**  
*(Bids managed by Neighboring Concepts)*

**November 2021**

*\* NOTE: Work In Progress...Dates Subject to Change.*

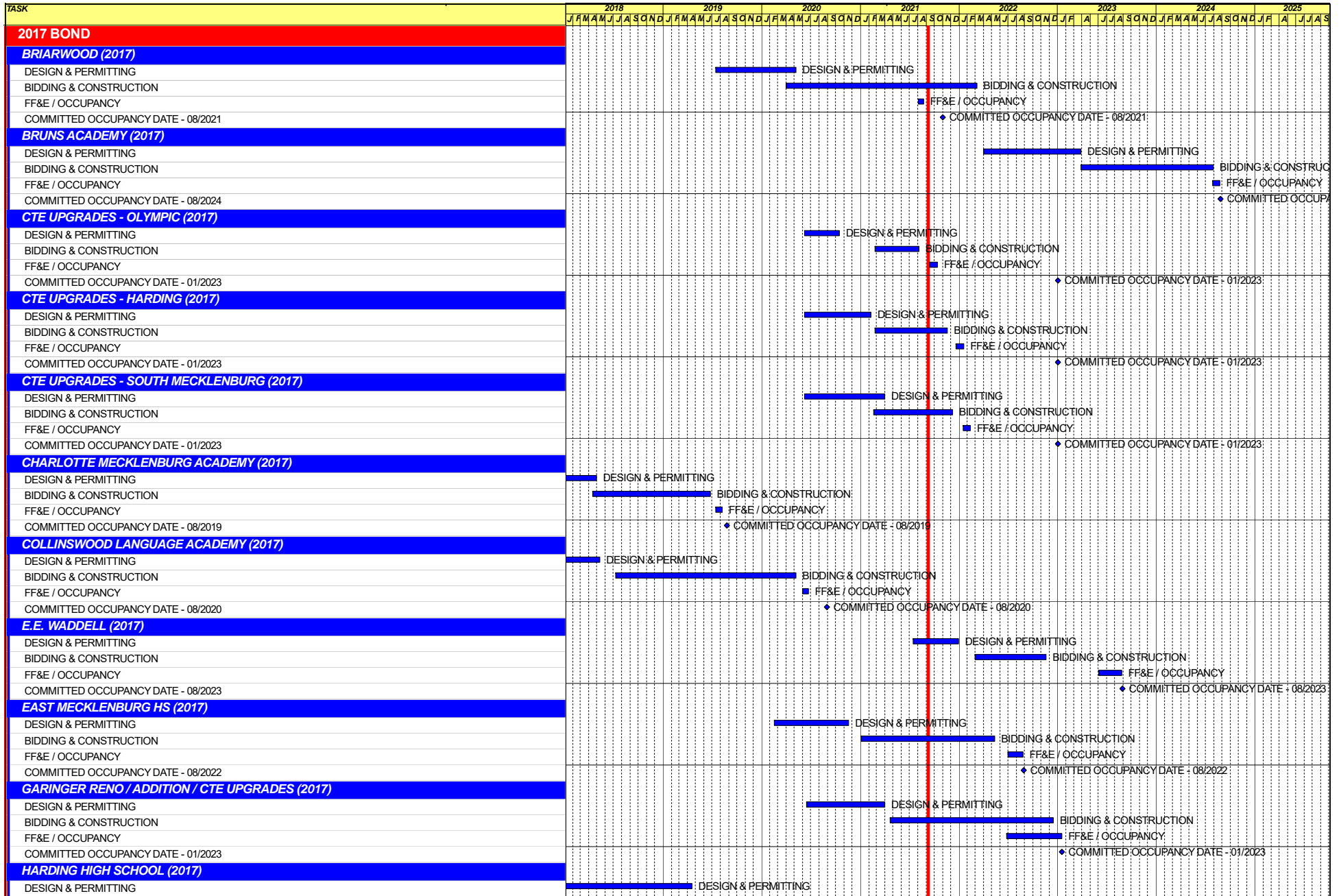
---

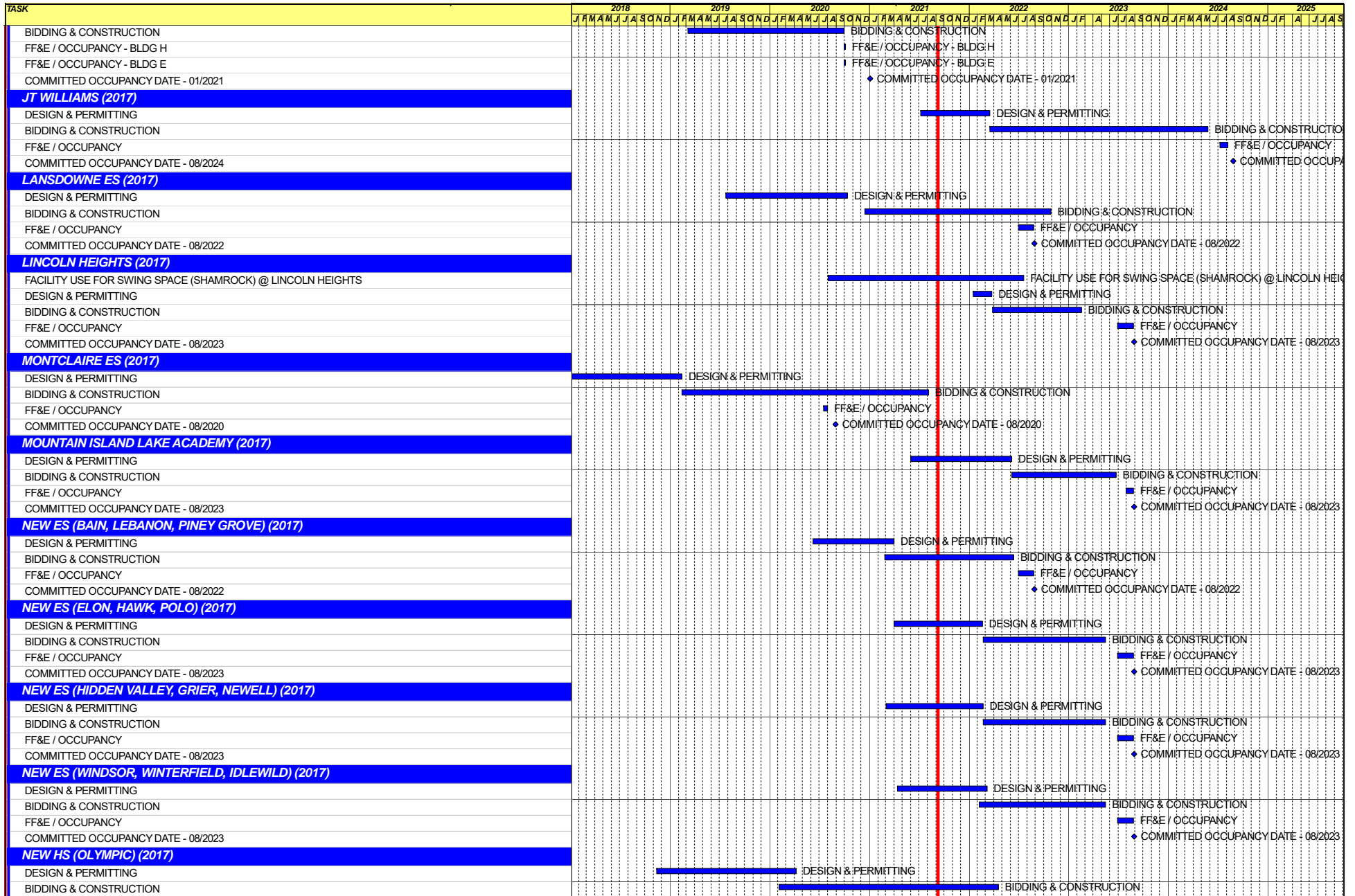
## SWING SPACE UTILIZATION

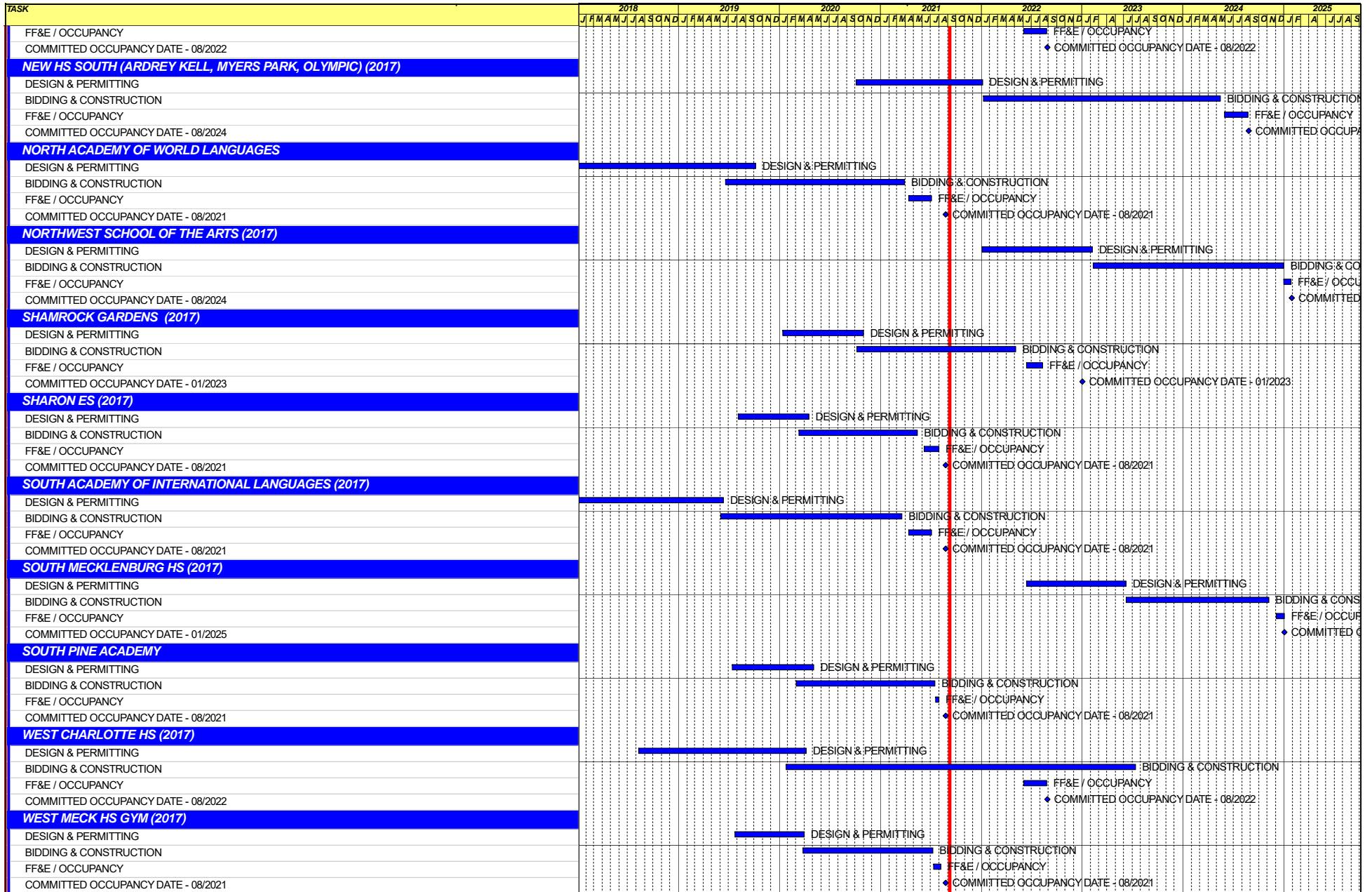
Creating a temporary space for students and staff to occupy during construction on a school’s campus has proven to be beneficial to the project’s schedule and cost and overall safety and efficiency of school operations. When the renovation or expansion of a facility is performed and the facility must remain functionally operational, there are benefits to the owner in using swing space.

We have successfully utilized both onsite and offsite swings. The most desirable swings are “offsite” ones. Onsite swing using mobiles or modulars, likewise has been successfully used. The following is a summary of current swing options planned or in use.

| <u>School</u> | <u>No. of Mobiles/Relocation Site</u> | <u>Status (From – To)</u> |
|---------------|---------------------------------------|---------------------------|
| Shamrock      | Lincoln Heights                       | August 2020 – August 2022 |







**Capital Improvements Program**  
***Projects in Design or Under Construction***

| School  | Architect            | General Contractor/CM |
|---|----------------------|-----------------------|
| <b>Projects In Design</b>                           |                      |                       |
| E.E. Waddell (17)                                   | Moseley              | TBD                   |
| J.T. Williams (17)                                  | FWA                  | New Atlantic          |
| Lincoln Heights Repurpose (17)                      | Neighboring Concepts | TBD                   |
| Mountain Island School (17)                         | ADW                  | Whiting-Turner        |
| New ES (Elon,Hawk Ridge, Polo Ridge) (17)           | Little Diversified   | Balfour Beatty        |
| New ES (Hidden Valley, JW Grier, Newell) (17)       | ADW                  | Edifice, Inc.         |
| New ES (Windsor, Winterfield, Idlewild) (17)        | Neighboring Concepts | Rodgers-Holt Brothers |
| New HS (South, Ardrey) (17)                         | Ratio                | Messer                |
| <b>Projects in Bid/Award/Construction Phase</b>     |                      |                       |
| CTE (Harding, Olympic, South) (17)                  | MPS                  | Branch Brownstone     |
| East Mecklenburg High School (17)                   | Morris Berg          | Turner Construction   |
| Garinger Addition/Renovation & CTE (17)             | LS3P                 | Balfour Beatty        |
| Lansdowne Elementary School Replacement (17)        | Perkins Eastman      | Edifice, Inc.         |
| New ES (Bain, Lebanon Rd, Piney Grove) (17)         | FWA                  | Metcon                |
| New High School (Olympic Relief) (17)               | Little Diversified   | Edifice, Inc.         |
| Shamrock Gardens Elementary School Replacement (17) | Little Diversified   | Rodgers-Holt Brothers |
| West Charlotte High School (17)                     | LS3P                 | Rodgers-Holt Brothers |

**Capital Improvements Program**  
***Projects Substantially Completed/Closed \****

| School  | Turnover Year | Architect                    | General Contractor              |
|---|---------------|------------------------------|---------------------------------|
| Briarwood Elementary School Replacement (17)  | Aug-21        | ADW                          | New Atlantic Contracting        |
| Montclair Elementary School (17)              | Aug-21        | WHN                          | Messer Construction             |
| North Academy of World Languages (17)         | Aug-21        | ADW                          | New Atlantic Contracting        |
| Sharon Elementary School (17)                 | Aug-21        | Clark Nexsen                 | Samet                           |
| South Academy of International Languages (17) | Aug-21        | FWA                          | Messer Construction             |
| South Pine Academy (17)                       | Aug-21        | FWA                          | Metcon                          |
| West Mecklenburg Gym (17)                     | Aug-21        | Moseley                      | Barnhill/D.A. Everett           |
| Collinswood Language Academy (17)             | Aug-20        | Perkins Eastman              | Turner Construction             |
| Harding High School Renovation (17)           | Aug-20        | SFLA                         | Barnhill Contracting            |
| Rea Farms STEAM Academy (13)                  | Aug-20        | Little Diversified           | Balfour Beatty                  |
| Ashley Park K-8 Conversion (13)               | Aug-19        | ADW                          | Turner Construction             |
| Druid Hills K-8 Conversion (13)               | Aug-19        | ADW                          | Edifice, Inc.                   |
| Selwyn Elementary (13)                        | Aug-19        | Clark Nexsen                 | Balfour Beatty                  |
| Charlotte Mecklenburg Academy (17)            | Aug-19        | KSQ                          | Edifice, Inc.                   |
| Davidson K-8 (13)                             | Aug-19        | Little Diversified           | Gilbane                         |
| CTE - North Mecklenburg High (13)             | Aug-19        | LS3P                         | Shiel Sexton                    |
| CTE - Garinger (13)                           | Mar-19        | LS3P                         | Hostetter & Son                 |
| CTE - Independence (13)                       | Mar-19        | LS3P                         | D.E. Brown                      |
| CTE - West Mecklenburg (13)                   | Mar-19        | LS3P                         | Hostetter & Son                 |
| Charlotte East Language Academy (13)          | Aug-18        | Morris Berg                  | Edifice, Inc                    |
| Myers Park High School Phase 3 (13)           | Aug-18        | Boomerang Design             | BE&K                            |
| Northridge Middle (13)                        | Aug-18        | Morris Berg                  | Barnhill Contracting            |
| Myers Park High Bldg 2 (13)                   | Feb-18        | Boomerang Design             | BE&K                            |
| East Mecklenburg High Addition (13)           | Jan-18        | Bergman (fna Gantt Huberman) | Edifice, Inc.                   |
| J.M. Alexander Middle (13)                    | Aug-17        | FWA Group                    | Balfour Beatty                  |
| Northwest School of the Arts Renovation (13)  | Aug-17        | Moseley                      | Turner Construction             |
| Renaissance West STEAM Academy (13)           | Aug-17        | Little Diversified           | Rodgers Construction            |
| South Mecklenburg High Addition (13)          | Jul-17        | SFLA                         | Barnhill Contracting            |
| Myers Park High Bldg 1 (13)                   | Sep-16        | Boomerang                    | KBR                             |
| Statesville Road Elementary (13)              | Aug-16        | ADW                          | JE Dunn                         |
| Nations Ford Elementary (13)                  | Aug-16        | Wash Hatem Nelson            | Messer Construction             |
| Olympic High Addition (13)                    | Aug-16        | McMillan, Pazdan, Smith      | Turner Construction             |
| Lawrence Orr Elementary (07)                  | Aug-15        | Cort Architectural Group     | DH Griffin/Metcon               |
| Parkside Elementary (07)                      | Aug-15        | Wash Hatem Nelson            | Clancy & Theys                  |
| Hawthorne High Renovations (07)               | Aug-15        | Morris-Berg                  | Balfour Beatty                  |
| Newell Elementary (07)                        | Aug-15        | Perkins Eastman              | New Atlantic Contracting        |
| Ranson Middle (07)                            | Aug-15        | Morris-Berg                  | Edifice, Inc.                   |
| Vance High                                    | Jan-15        | LS3P                         | Matthews Construction Co., Inc. |
| Garinger High - Renovations/Addition          | Aug-14        | Adams Group Architects       | Turner Construction             |
| Olympic High - Stadium                        | Aug-14        | Site Solutions               | Turner Construction             |
| West Mecklenburg High - Stadium               | Aug-14        | Site Solutions               | Turner Construction             |
| Collinswood - Indoor Air Quality              | Aug-14        | PEA                          | The Bowers Group                |
| Lansdowne - Indoor Air Quality                | Aug-14        | AeroRaq                      | Tyler 2                         |
| McKee Road - Indoor Air Quality               | Aug-14        | McCracken & Lopez            | Godfrey Construction            |
| Garinger High - Track & Field                 | Jul-14        | Site Solutions               | Turner Construction             |
| Independence High - Gym                       | Jun-14        | Shook Kelly                  | Shelco, Inc. (CM)               |
| Palisades Park Elementary                     | May-14        | Wash Hatem Nelson            | Clancy & Theys                  |
| East Mecklenburg High Auditorium              | Jan-14        | Gantt Huberman Associates    | Godfrey Construction Co., Inc.  |
| Pineville Elementary                          | Aug-13        | Cort Architectural Group     | Beam Construction Co., Inc.     |
| Bain Elementary                               | Aug-13        | ADW                          | Edison Foard                    |
| Grand Oak Elementary                          | Aug-13        | ADW                          | Matthews Construction Co., Inc. |
| McClintock Middle                             | Aug-13        | FWA Group                    | Shelco, Inc.                    |

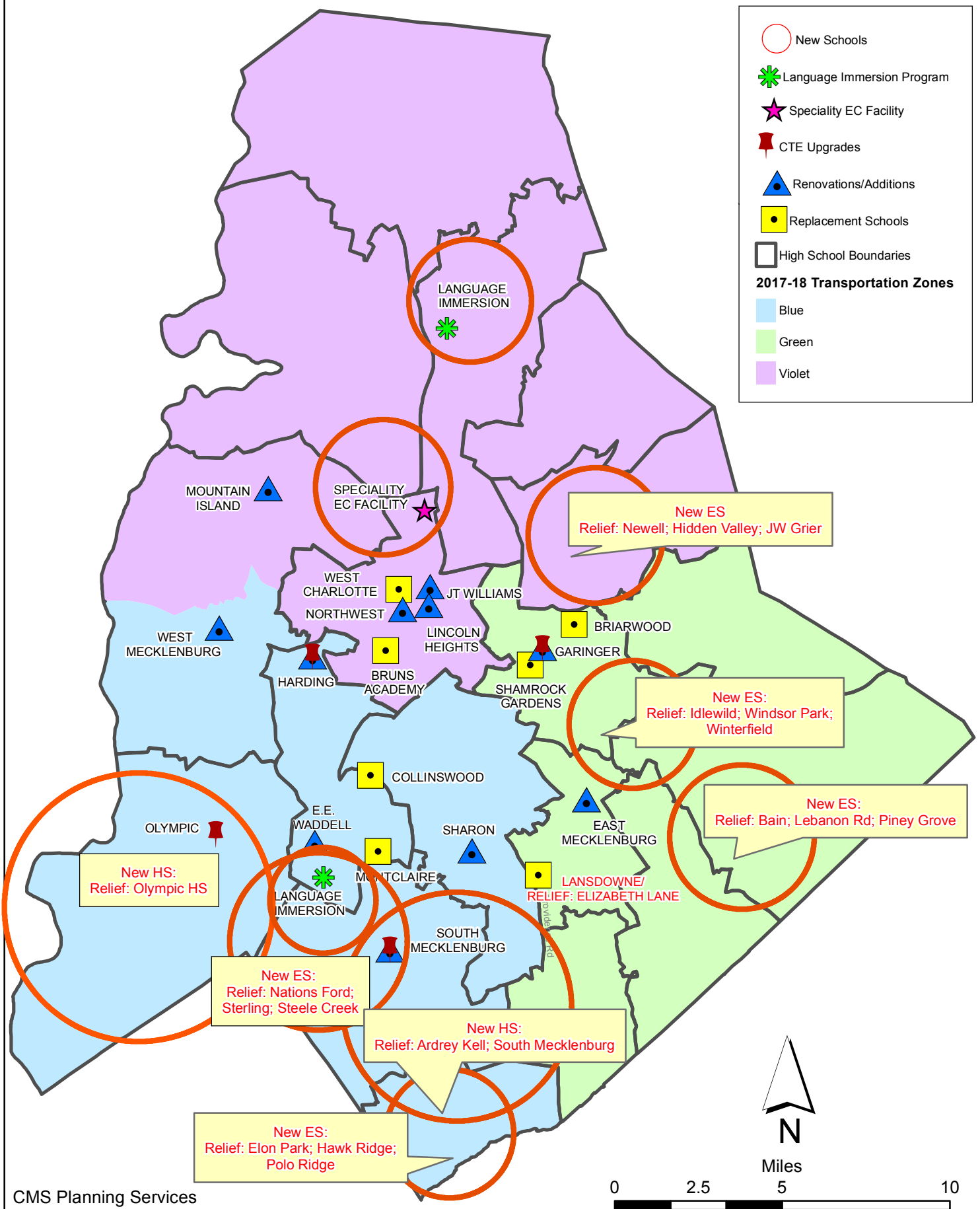


Capital Improvements Program  
*Projects Substantially Completed/Closed* \*

| School                                 | Turnover Year | Architect                | General Contractor   |
|--|---------------|--------------------------|----------------------|
| Sedgefield Elementary Demolition       | Oct-12        | Cort Architectural Group | EHG, LLC             |
| Alexander Graham Middle Gym Reno       | Aug-12        | MBAJ Architecure         | Edison Foard         |
| First Ward - Demolition & Bus lot      | Aug-12        | MBAJ Architecure         | T.K. Browne          |
| South Meck High Parking Lot Renovation | Aug-12        | Little Diversified       | Sorenson Gross       |
| Cochrane Middle - Kitchen              | Aug-11        | MBAJ Architecure         | Sorenson Gross       |
| Hough High                             | Aug-10        | Little Diversified       | Rodgers Construction |
| Rocky River High                       | Aug-10        | Little Diversified       | Balfour Beatty       |

*Projects closed prior to 2010 are not shown*

# CMS Capital Improvement Plan 2017 Bond Projects



# PROJECT STATUS REPORT



## Monthly Project Status 2017 Bond Summary September 2021

| Project                              | Current Project Estimate | Project Scope  | ** Occupy On | Design Phase | Construction Progress | Project Status  |
|--------------------------------------|--------------------------|--|--------------|--------------|-----------------------|---|
| Briarwood Elementary School (17)     | \$ 31,962,730            | 45-classroom replacement facility; replaces school built in 1956.            | August 2021  | Complete     | 91 %                  | The Briarwood Elementary Replacement School was occupied in August. The team continues to focus on completion of the punch list and commissioning items. The construction manager completed abatement and progressed with the demolition of the existing buildings. The remaining demolition and site work is scheduled to be completed in 2022.  |
| Bruns Academy (17)                   | \$ 39,784,927            | New 45-classroom elementary school (K-5); replaces old school built in 1969. | August 2024  | Not Started  | 0 %                   | This project is scheduled to start design Spring 2022.  |
| Career and Technology Education (17) | \$ 10,159,765            | Phase I CTE upgrades at Olympic, Harding, Garinger and South Mecklenburg.    | January 2023 | Complete     | 45 %                  | The CTE projects at Harding and South Mecklenburg continue to progress. The load bearing structural walls are complete and temporary shoring is being removed. The interior walls are framed and in wall rough-ins are complete and the drywall is complete at South Mecklenburg. The Harding project consists of renovations to existing classrooms in the auditorium building to develop a suite of technology classrooms. The project at South Mecklenburg consists of renovating the old kitchen area into a culinary arts lab and classroom. Harding and South Mecklenburg are scheduled for completion in January 2022. |
| Charlotte-Mecklenburg Academy (17)   | \$ 17,699,220            | New EC school located on the old Statesville Elementary School site.         | August 2019  | Complete     | 100 %                 | Project is complete.  |
| Collinswood Language Academy (17)    | \$ 41,547,540            | New 63-classroom K-8 facility on the site of the Smith Family Center.        | August 2020  | Complete     | 100 %                 | Project is complete.  |
|                                      |                          |  |              |              |                       |   |

# Monthly Project Status

2017 Bond Summary

September 2021

| Project                           | Current Project Estimate | Project Scope   | ** Occupy On | Design Phase           | Construction Progress | Project Status  |
|-----------------------------------|--------------------------|---|--------------|------------------------|-----------------------|---|
| E.E. Waddell (17)                 | \$ 5,137,367             | Repurpose current E.E. Waddell to reopen as a magnet high school.   | August 2023  | Construction Documents | 0 %                   | The E.E. Waddell High School project continues to progress in the construction document phase. Design management staff have begun development of the bid documents for the project. The project consists of light renovations to the existing science classrooms, maker space, lobby, HVAC work, limited VCT and acoustical ceiling replacement. This project is scheduled to start construction by summer of 2022 and be completed prior to occupancy in August of 2023. |
| East Mecklenburg High School (17) | \$ 15,058,594            | This project will provide for the design, and construction of a new 30 classroom building.                    | August 2022  | Complete               | 25 %                  | The construction manager for East Mecklenburg High School completed the slab on grade pour and the structural steel erection for the three story structure is progressing. The elevated floor slabs will be poured as steel erection and decking is placed.   |
| Garinger High School (17)         | \$ 5,986,979             | Project includes the design and construction for renovations of 300 building and a new 16 classroom building. | January 2023 | Complete               | 10 %                  | The Garinger Addition and Renovation construction manager completed the under slab electrical and plumbing rough-ins and has poured the slab on grade. They continued with low voltage conduit trenches to the existing buildings that will provide the connectivity. The addition is scheduled to be occupied August of 2022 and the renovation to be occupied in January of 2023.   |
| Harding High School (17)          | \$ 13,805,263            | Renovation of the kitchen, cafeteria, existing gym (aux) and the addition of a new gym.                       | August 2020  | Complete               | 99 %                  | Construction Manager has change items that will be completed summer 2021 and is finalizing financial reconciliation.  |
| JT Williams (17)                  | \$ 15,732,600            | Project includes building renovations to J.T. Williams Montessori magnet.                                     | August 2024  | Schematic              | 0 %                   | The JT Williams Secondary Montessori project is in the design development phase. The project's scope focuses on required civil improvements, architectural and MEP renovations. The project is scheduled to be completed in August 2024.  |
|                                   |                          |   |              |                        |                       |   |

# Monthly Project Status

2017 Bond Summary

September 2021

| Project                                | Current Project Estimate | Project Scope   | ** Occupy On | Design Phase           | Construction Progress | Project Status  |
|--|--------------------------|---|--------------|------------------------|-----------------------|---|
| Lansdowne Elementary School (17)       | \$ 35,378,834            | New 45-classroom school; replaces old school built in 1959 and relieve crowding at Elizabeth Lane ES. | August 2022  | Complete               | 32 %                  | The Lansdowne Elementary School construction manager completed the slab on grade pours and is working on elevated slabs now. The electrician and plumber are coordinating with the mason for in wall rough-ins for masonry walls. The roofer and wall spray foam contractors have mobilized on site and are getting started. The site contractor completed the underground storm water detention and backfilled the area which will be paved for the staff parking lot. |
| Lincoln Heights Elementary School (17) | \$ 4,588,675             | Repurpose and reopen as magnet school.  | August 2023  | Construction Documents | 0 %                   | Shamrock Gardens will be utilizing the Lincoln Heights Elementary building as swing space August 2020 - August 2022. Playgrounds were replaced and new digital signage was installed summer 2020. Based on Board approval in May 2021 the occupancy date has been moved to 2023.  |
| Montclair Elementary School (17)       | \$ 28,559,390            | New 45-classroom replacement facility replacing school built in 1958.                                 | August 2020  | Complete               | 99 %                  | This month the construction manager for the Montclair Elementary School completed the final phase of work on the project. The new 45-classroom elementary school building was occupied in August.   |
| Mountain Island Lake Academy (17)      | \$ 10,488,400            | K-8 Phase 2 - New gymnasium and specialty classrooms.   | August 2023  | Design Development     | 0 %                   | The Mountain Island Lake Academy project has progressed into the design development phase. This project consists of a building addition containing a middle school gymnasium, visual and performing arts classrooms. To address long lead time concerns the development of an early steel and roof procurement package are in progress. This project is scheduled to start in the spring of 2022 and is scheduled for completion in August 2023.                        |
|  |                          |   |              |                        |                       |   |

# Monthly Project Status

2017 Bond Summary

September 2021

| Project  | Current Project Estimate | Project Scope   | ** Occupy On | Design Phase           | Construction Progress | Project Status  |
|--|--------------------------|---|--------------|------------------------|-----------------------|---|
| New Elementary School (Bain, Lebanon, Piney Grove) (17)    | \$ 30,455,951            | New 45-classroom elementary school; relieves crowding at Bain, Lebanon Road, Piney Grove. | August 2022  | Complete               | 14 %                  | The New Elementary School (Bain, Lebanon, Piney Grove Relief) continued prepping and pouring the slab on grade. The mason is well underway with load bearing masonry walls. The steel erection for the two-story classroom wing is progressing. The electrical and plumbing contractors are also on site completing in wall rough-ins. The site contractor continues work on underground storm water lines and inlets. The front staff parking lot has the asphalt binder course installed and is being used for construction laydown as needed. The team has received a preliminary design to review for the required signal at the school entrance. This new 45-classroom school will be located next to the existing Mint Hill Middle School.  |
| New Elementary School (Elon, Hawk Ridge, Polo Relief) (17) | \$ 43,856,961            | New 45-classroom elementary school to relieve Elon, Hawk Ridge, Polo.                     | August 2023  | Construction Documents | 0 %                   | The New Elementary School (Elon, Hawk Ridge, Polo Relief) project has moved into the construction document phase. The NCDOT/CDOT traffic study scope was approved and the draft traffic study analysis report is progressing. The second round of rezoning comments have been received and will be returned in October for approval. The structural steel and roofing for the building is being procured early by the construction manager to address material long lead time concerns. Board approval for the early package is scheduled in late October, the bid and award of the remainder of project will occur early in 2022. Construction is scheduled to start in the spring of 2022 and is scheduled for completion in August 2023. This new 45-classroom school will be located across from the Ardrey Kell High School. |
|  |                          |   |              |                        |                       |   |



# Monthly Project Status

2017 Bond Summary

September 2021

| Project  | Current Project Estimate | Project Scope   | ** Occupy On | Design Phase           | Construction Progress | Project Status  |
|--|--------------------------|---|--------------|------------------------|-----------------------|---|
| New Elementary School (Hidden Valley, JW Grier, Newell) (17)       | \$ 34,697,022            | New 45-classroom elementary school; relieves overcrowding at Hidden Valley, J.W. Grier, Newell. | August 2023  | Construction Documents | 0 %                   | The New Elementary School (Hidden Valley, JW Grier, Newell Relief) project has progressed into construction document phase. The traffic analysis scoping criteria was accepted in September by NCDOT and draft traffic study analysis report is under development and scheduled to be completed by mid-November. To address long lead time concerns the team is developing an early steel, roofing, and dewatering system package that is scheduled to bid in late November. The remainder will bid and award in the spring of 2022. This new 45-classroom school will be located next to Northridge Middle School and is scheduled for occupancy in August 2023. |
| New Elementary School (Windsor, Winterfield, Idlewild Relief) (17) | \$ 37,197,022            | New 45-classroom elementary school to relieve Windsor, Winterfield, and Idlewild ES.            | August 2023  | Design Development     | 0 %                   | The New Elementary School (Windsor, Winterfield, Idlewild Relief) project continues to progress in the design development phase and is scheduled to be reviewed by CMS staff in October. The development of the individual permit for Corps of Engineers continues to progress. To address long lead time concerns the team is developing an early steel, roofing, package that is scheduled to bid in late November. The remainder will bid and award in the spring of 2022. This new 45-classroom school facility is scheduled for occupancy in August 2023.  |
|  |                          |   |              |                        |                       |   |

# Monthly Project Status

2017 Bond Summary

September 2021

| Project                               | Current Project Estimate | Project Scope  | ** Occupy On | Design Phase           | Construction Progress | Project Status   |
|---------------------------------------|--------------------------|--|--------------|------------------------|-----------------------|--|
| New High School (17) (Olympic Relief) | \$ 109,908,793           | New 100 classroom high school; relieves crowding at Olympic High School.                               | August 2022  | Complete               | 74 %                  | The construction manager for the New High School Olympic Relief continued throughout the building with exterior and interior metal studs and drywall installation. The mechanical, electrical and plumbing (MEP) trades continued with above ceiling and in-wall rough in while focusing on work in the mechanical and electrical rooms. They continue to utilize temporary air conditioning units throughout the facility to allow finish work to begin while waiting on the permanent system to come online. Drywall continued to be installed on multiple floors of the classroom and administration wing. The painter continued throughout the building with block fill and the first coat of paint. The pool contractor progressed with pouring the walls of the pool. The field contractor continued with the installation of the synthetic turf system and the landscaper mobilized and prepared the grass fielded for sod. The contractor continued to be focused on the maintaining the erosion control measures on the site. |
| New High School (South, Ardrey) (17)  | \$ 154,930,460           | New 100 classroom high school to relieve South Mecklenburg, Ardrey Kell and Myers Park HS.             | August 2024  | Construction Documents | 0 %                   | The New High School (South, Ardrey Kell Relief) project continues to progress in the construction document phase. The architect is scheduled to submit construction documents to CMS and LUESA for review and comments in October. The second round of rezoning comments have been received and will be returned in October for approval. CDOT has approved the traffic study analysis report. Army Corps of Engineers permit continues to progress in its approval process; final approval is expected in November. The construction manager has begun procurement strategies and activities for the project. This project consists of a new 100-classroom high school with athletic play fields and stadium.   |
| North Academy of World Languages      | \$ 42,359,367            | New 66 classroom K-8 Language Immersion facility located on the old J.M. Alexander Middle School site. | August 2021  | Complete               | 99 %                  | The project closeout and final financial reconciliation process with the construction manager is underway.   |

# Monthly Project Status

2017 Bond Summary

September 2021

| Project   | Current Project Estimate | Project Scope  | ** Occupy On | Design Phase | Construction Progress | Project Status  |
|---|--------------------------|--|--------------|--------------|-----------------------|---|
| Northwest School of the Arts (17)   | \$ 20,467,000            | Replace classroom building built in 1952 and build classroom addition that supports program.             | August 2024  | Not Started  | 0 %                   | Design to start in early 2022.  |
| Shamrock Gardens Elementary School (17)                                   | \$ 32,358,351            | New 45-classroom replacement facility.   | August 2022  | Complete     | 46 %                  | The Shamrock Gardens Elementary School construction manager mobilized multiple trades on the project during the month. The steel contractor completed the installation of the structural steel, bar joist and decking. The mason continued with brick installation throughout the exterior of the building and completed the interior CMU. Exterior studs continued on the classroom wing and interior metal studs began in the administration and first floor classroom wing. The installation of the wall insulation progressed in the available areas. The MEP trades continued throughout the building with above ceiling and in wall rough-ins. The landscaper mobilized to install areas that were available to take advantage of the fall planting season. |
| Sharon Elementary School (17)   | \$ 9,475,862             | Add 16 classroom building and increase capacity of cafeteria.  | August 2021  | Complete     | 99 %                  | The project closeout and final financial reconciliation process with the construction manager is underway.  |
| South Academy of International Languages (fka New K-8 School (South) (17) | \$ 41,959,367            | New 71 classroom K-8 Language Immersion facility located on the old Nations Ford Elementary School site. | August 2021  | Complete     | 99 %                  | The project closeout and final financial reconciliation process with the construction manager is underway.  |
| South Mecklenburg High School (17)  | \$ 15,622,927            | Renovate/replace two classroom buildings built in 1958 to upgrade learning conditions.                   | January 2025 | Not Started  | 0 %                   | Project to be funded by the County in FY22, planning underway.  |
| South Pine Academy  | \$ 31,272,550            | New 45-classroom elementary school to relieve Nations Ford, Sterling, and Steele Creek.                  | August 2021  | Complete     | 99 %                  | The project closeout and final financial reconciliation process with the construction manager is underway.  |
|   |                          |  |              |              |                       |   |

# Monthly Project Status

2017 Bond Summary

September 2021

| Project                           | Current Project Estimate | Project Scope   | ** Occupy On | Design Phase | Construction Progress | Project Status   |
|-----------------------------------|--------------------------|---|--------------|--------------|-----------------------|--|
| West Charlotte High School (17)   | \$ 109,977,166           | New 100 classroom school to replace current facility built in 1954.       | August 2022  | Complete     | 59 %                  | The trade contractors continue to work throughout the West Charlotte High School facility. The interior finishes have now started in many areas. The roof and windows are all installed and the building is dried in. The ceiling grid is progressing in many areas and lay-in lights are being installed. The plumbing and electrical contractors are setting fixtures. The mechanical contractor started the HVAC system allowing conditioned air to flow. The paint contractor is working throughout and areas have received the accent paint finishes. The site contractor installed curb and gutter and access and parking areas are being paved and also worked on hardscapes around the building including sidewalks and patios. The project team continues to work through supply chain logistics and issues with material availability. |
| West Mecklenburg High School (17) | \$ 10,850,902            | Provide new gymnasium, the existing gymnasium will become the auxilliary. | August 2021  | Complete     | 99 %                  | The project closeout and final financial reconciliation process with the construction manager is underway.   |
|                                   |                          |   |              |              |                       |  |

# MONTHLY PROJECT PHOTOS

# PROJECT PROGRESS PHOTOS

---



New High School Olympic Relief



## PROJECT PROGRESS PHOTOS

---



New High School Olympic Relief



## PROJECT PROGRESS PHOTOS

---



New High School Olympic Relief

## PROJECT PROGRESS PHOTOS

---



New High School Olympic Relief



## PROJECT PROGRESS PHOTOS

---



New High School Olympic Relief



# PROJECT PROGRESS PHOTOS

---



West Charlotte High School Replacement



# PROJECT PROGRESS PHOTOS

---



West Charlotte High School Replacement

## PROJECT PROGRESS PHOTOS

---



West Charlotte High School Replacement



## PROJECT PROGRESS PHOTOS

---



West Charlotte High School Replacement



## PROJECT PROGRESS PHOTOS

---



West Charlotte High School Replacement



# PROJECT PROGRESS PHOTOS

---



Shamrock Gardens Elementary School



## PROJECT PROGRESS PHOTOS

---



Shamrock Gardens Elementary School

## PROJECT PROGRESS PHOTOS

---

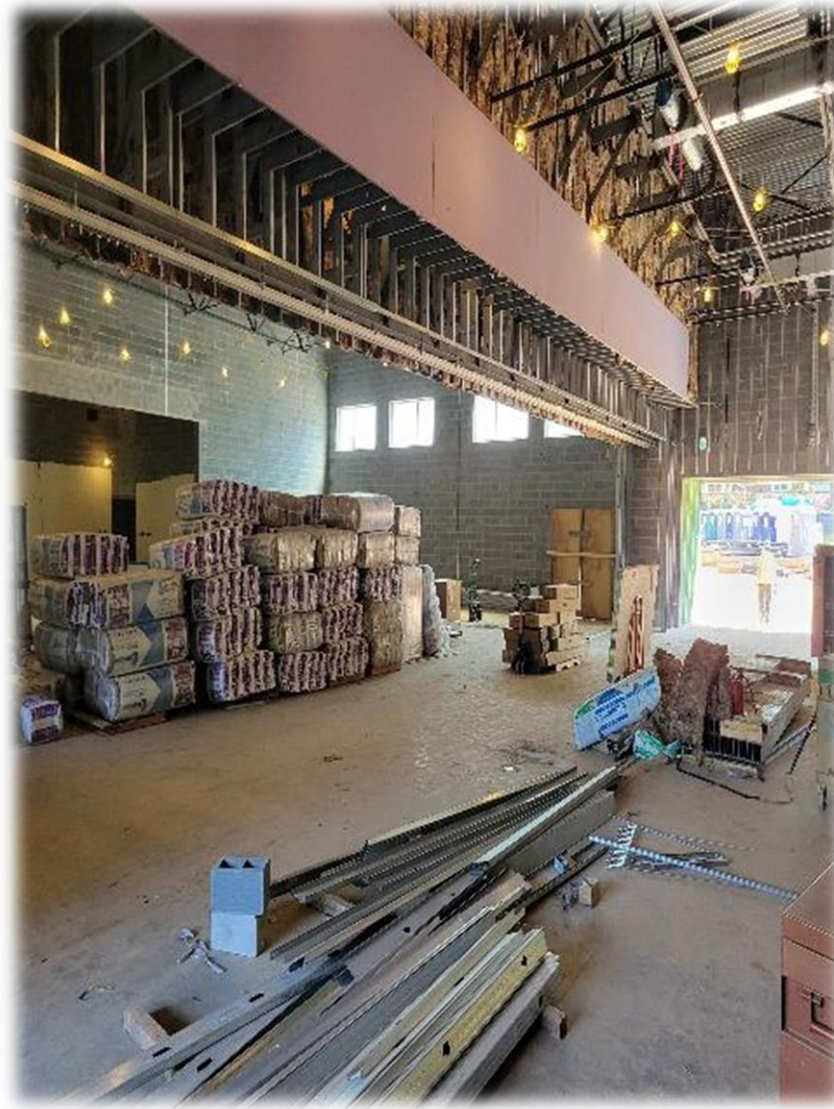


Shamrock Gardens Elementary School



## PROJECT PROGRESS PHOTOS

---



Shamrock Gardens Elementary School

## PROJECT PROGRESS PHOTOS

---



Lansdowne Elementary School



## PROJECT PROGRESS PHOTOS

---



Lansdowne Elementary School

## PROJECT PROGRESS PHOTOS

---



Lansdowne Elementary School



## PROJECT PROGRESS PHOTOS



Lansdowne Elementary School

## PROJECT PROGRESS PHOTOS

---



East Mecklenburg High School



## PROJECT PROGRESS PHOTOS

---



East Mecklenburg High School

## PROJECT PROGRESS PHOTOS

---



East Mecklenburg High School

## PROJECT PROGRESS PHOTOS

---



New ES (Bain, Lebanon, Piney Grove Relief)



## PROJECT PROGRESS PHOTOS

---



New ES (Bain, Lebanon, Piney Grove Relief)

## PROJECT PROGRESS PHOTOS

---



New ES (Bain, Lebanon, Piney Grove Relief)

# MWSBE PARTICIPATION REPORT



# Contract Status Report - MWSBE Participation Commitments

Report Date 10/11/2021

Charlotte-Mecklenburg Schools

10/11/2021 2:03:24 PM

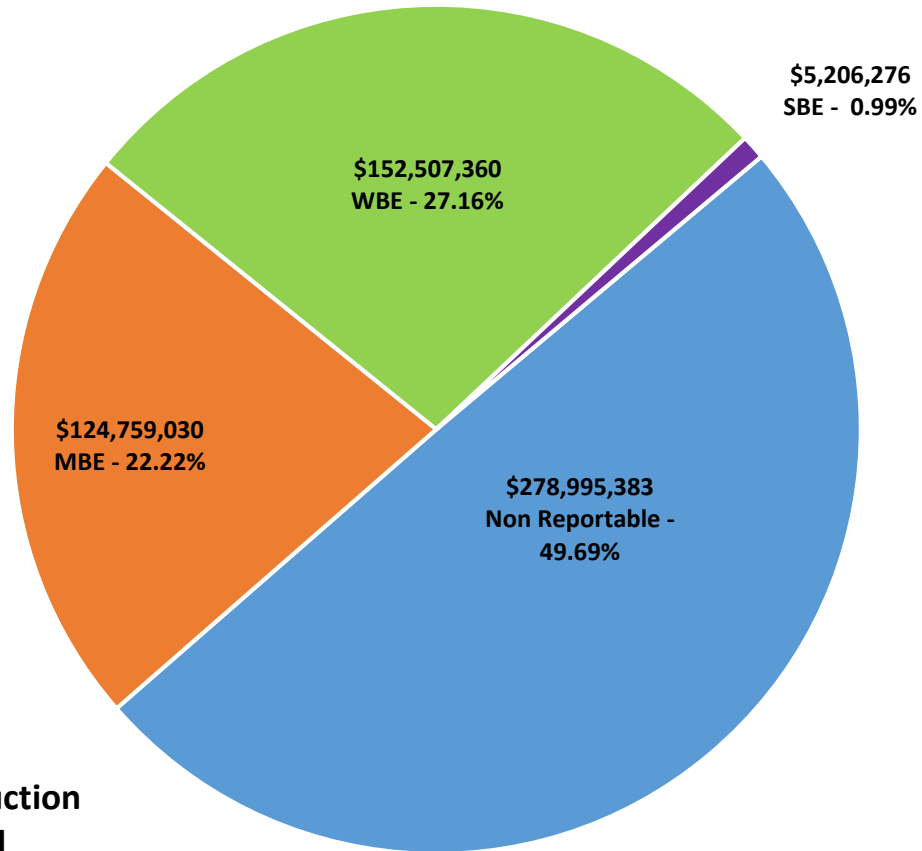
2017 Bond Projects

September 2021 Monthly Bond Report

| Facility                                      | Contract Amount | African American MBE\$ | %      | Other MBE \$ | %      | Total MBE \$ | %      | Other WBE \$ | %      | Other SBE \$ | %      | Total        | %      |
|---|-----------------|------------------------|--------|--------------|--------|--------------|--------|--------------|--------|--------------|--------|--------------|--------|
| <u>Briarwood Elementary School (17)</u>       | \$28,723,186    | \$4,011,116            | 13.96% | \$2,424,277  | 8.44%  | \$6,435,393  | 22.40% | \$1,878,126  | 6.54%  | \$152,902    | 0.53%  | \$8,466,421  | 29.48% |
| <u>Career and Technology Education (17)</u>   | \$5,914,740     | \$586,648              | 9.92%  | \$344,382    | 5.82%  | \$931,030    | 15.74% | \$192,865    | 3.26%  | \$24,585     | 0.42%  | \$1,148,480  | 19.42% |
| <u>Charlotte-Mecklenburg Academy (17)</u>     | \$17,035,852    | \$198,536              | 1.17%  | \$1,029,192  | 6.04%  | \$1,227,728  | 7.21%  | \$872,755    | 5.12%  | \$13,200     | 0.08%  | \$2,113,683  | 12.41% |
| <u>Collinswood Language Academy (17)</u>      | \$38,527,740    | \$649,287              | 1.69%  | \$1,613,103  | 4.19%  | \$2,262,390  | 5.87%  | \$11,362,566 | 29.49% | \$9,328      | 0.02%  | \$13,634,284 | 35.39% |
| <u>E.E. Waddell (17)</u>                      | \$157,805       | \$0                    | 0.00%  | \$0          | 0.00%  | \$0          | 0.00%  | \$10,950     | 6.94%  | \$0          | 0.00%  | \$10,950     | 6.94%  |
| <u>East Mecklenburg High School (17)</u>      | \$12,495,074    | \$603,811              | 4.83%  | \$532,460    | 4.26%  | \$1,136,271  | 9.09%  | \$490,382    | 3.92%  | \$681,075    | 5.45%  | \$2,307,728  | 18.47% |
| <u>Garinger High School (17)</u>              | \$4,212,784     | \$49,330               | 1.17%  | \$412,572    | 9.79%  | \$461,902    | 10.96% | \$165,433    | 3.93%  | \$0          | 0.00%  | \$627,335    | 14.89% |
| <u>Harding High School (17)</u>               | \$12,968,986    | \$1,504,505            | 11.60% | \$310,356    | 2.39%  | \$1,814,862  | 13.99% | \$3,846,831  | 29.66% | \$176        | 0.00%  | \$5,661,869  | 43.66% |
| <u>JT Williams (17)</u>                       | \$1,180,500     | \$2,000                | 0.17%  | \$20,000     | 1.69%  | \$22,000     | 1.86%  | \$0          | 0.00%  | \$0          | 0.00%  | \$22,000     | 1.86%  |
| <u>Lansdowne Elementary School (17)</u>       | \$30,617,679    | \$5,566,565            | 18.18% | \$468,305    | 1.53%  | \$6,034,870  | 19.71% | \$1,446,488  | 4.72%  | \$223,625    | 0.73%  | \$7,704,983  | 25.17% |
| <u>Lincoln Heights Elementary School (17)</u> | \$432,426       | \$92,274               | 21.34% | \$18,800     | 4.35%  | \$111,074    | 25.69% | \$0          | 0.00%  | \$74,503     | 17.23% | \$185,577    | 42.92% |
| <u>Montclair Elementary School (17)</u>       | \$26,195,769    | \$3,617,952            | 13.81% | \$2,260,381  | 8.63%  | \$5,878,333  | 22.44% | \$5,729,641  | 21.87% | \$518,632    | 1.98%  | \$12,126,605 | 46.29% |
| <u>Mountain Island Lake Academy (17)</u>      | \$848,815       | \$0                    | 0.00%  | \$36,650     | 4.32%  | \$36,650     | 4.32%  | \$19,550     | 2.30%  | \$0          | 0.00%  | \$56,200     | 6.62%  |
| <u>New Elementary School (Bain, Leban)</u>    | \$26,301,565    | \$4,678,087            | 17.79% | \$18,841,591 | 71.64% | \$23,519,678 | 89.42% | \$1,214,672  | 4.62%  | \$308,680    | 1.17%  | \$25,043,030 | 95.21% |
| <u>New Elementary School (Elon, Hawk)</u>     | \$1,973,755     | \$0                    | 0.00%  | \$0          | 0.00%  | \$0          | 0.00%  | \$60,490     | 3.06%  | \$0          | 0.00%  | \$60,490     | 3.06%  |
| <u>New Elementary School (Hidden Vall)</u>    | \$2,050,323     | \$0                    | 0.00%  | \$99,674     | 4.86%  | \$99,674     | 4.86%  | \$35,500     | 1.73%  | \$25,600     | 1.25%  | \$160,774    | 7.84%  |
| <u>New Elementary School (Windsor, W)</u>     | \$3,267,366     | \$1,456,670            | 44.58% | \$258,000    | 7.90%  | \$1,714,670  | 52.48% | \$167,400    | 5.12%  | \$0          | 0.00%  | \$1,882,070  | 57.60% |
| <u>New High School (17) (Olympic Relief)</u>  | \$98,154,986    | \$13,312,696           | 13.56% | \$5,874,324  | 5.98%  | \$19,187,020 | 19.55% | \$8,458,793  | 8.62%  | \$766,550    | 0.78%  | \$28,412,363 | 28.95% |
| <u>New High School (South, Ardrey) (17)</u>   | \$6,559,675     | \$13,500               | 0.21%  | \$91,000     | 1.39%  | \$104,500    | 1.59%  | \$507,465    | 7.74%  | \$27,500     | 0.42%  | \$639,465    | 9.75%  |
| <u>North Academy of World Languages</u>       | \$38,294,162    | \$1,792,038            | 4.68%  | \$1,575,863  | 4.12%  | \$3,367,901  | 8.79%  | \$2,560,867  | 6.69%  | \$442,662    | 1.16%  | \$6,371,430  | 16.64% |
| <u>Northwest School of the Arts (17)</u>      | \$115,000       | \$0                    | 0.00%  | \$0          | 0.00%  | \$0          | 0.00%  | \$0          | 0.00%  | \$0          | 0.00%  | \$0          | 0.00%  |
| <u>Shamrock Gardens Elementary Scho</u>       | \$27,979,335    | \$2,032,082            | 7.26%  | \$1,468,047  | 5.25%  | \$3,500,129  | 12.51% | \$22,884,715 | 81.79% | \$275,594    | 0.98%  | \$26,660,438 | 95.29% |
| <u>Sharon Elementary School (17)</u>          | \$8,474,754     | \$278,444              | 3.29%  | \$338,513    | 3.99%  | \$616,956    | 7.28%  | \$926,873    | 10.94% | \$223,725    | 2.64%  | \$1,767,554  | 20.86% |
| <u>South Academy of International Lang</u>    | \$37,685,622    | \$6,023,141            | 15.98% | \$2,431,071  | 6.45%  | \$8,454,212  | 22.43% | \$10,755,611 | 28.54% | \$347,799    | 0.92%  | \$19,557,622 | 51.90% |

| Facility                                 | Contract<br>Amount | African<br>American<br>MBE\$ | %      | Other<br>MBE \$ | %      | Total<br>MBE \$ | %      | Other<br>WBE \$ | %      | Other<br>SBE \$ | %     | Total         | %      |
|--|--------------------|------------------------------|--------|-----------------|--------|-----------------|--------|-----------------|--------|-----------------|-------|---------------|--------|
| <u>South Pine Academy</u>                | \$26,415,366       | \$916,165                    | 3.47%  | \$19,416,086    | 73.50% | \$20,332,251    | 76.97% | \$4,342,256     | 16.44% | \$237,754       | 0.90% | \$24,912,261  | 94.31% |
| <u>West Charlotte High School (17)</u>   | \$94,957,318       | \$15,106,828                 | 15.91% | \$1,519,700     | 1.60%  | \$16,626,528    | 17.51% | \$72,580,016    | 76.43% | \$562,104       | 0.59% | \$89,768,648  | 94.54% |
| <u>West Mecklenburg High School (17)</u> | \$9,927,465        | \$393,254                    | 3.96%  | \$489,754       | 4.93%  | \$883,008       | 8.89%  | \$1,997,115     | 20.12% | \$290,283       | 2.92% | \$3,170,406   | 31.94% |
| <b>Grandtotal</b>                        | \$561,468,048      | \$62,884,929                 | 11.20% | \$61,874,101    | 11.02% | \$124,759,030   | 22.22% | \$152,507,360   | 27.16% | \$5,206,276     | 0.93% | \$282,472,665 | 50.31% |

## MWSBE Participation 2017 Bond Projects



**Design and Construction  
Contract Total  
\$561,468,048**

# PROJECT CONTROLS

**CHARLOTTE-MECKLENBURG BOARD OF EDUCATION**  
**2013 BOND SERIES-CAPITAL IMPROVEMENT PROGRAM**  
**BUDGET STATUS REPORT**

|   | Original Project<br>Budget | Current Project<br>Budget | Committed<br>Amount | Approved<br>Change Orders | Total Committed      | Pending<br>Commitments | To Be<br>Committed | Prev Paid To<br>Date | Paid To Date         | Balance To<br>Complete | Monthly<br>Expenditure |
|---|----------------------------|---------------------------|---------------------|---------------------------|----------------------|------------------------|--------------------|----------------------|----------------------|------------------------|------------------------|
|   | (A)                        | (B)                       | (C)                 | (D)                       | (E)=C+D              | (F)                    | (G)=(B-E-F)        | (H)                  | (I)                  | (J)=(B-I)              | (K)=(I-H)              |
| <b><u>A. REPLACEMENT &amp; RENOVATIONS</u></b>      |                            |                           |                     |                           |                      |                        |                    |                      |                      |                        |                        |
| 1 Career & Technology Education Institutes Phase 1: | \$8,640,000                | \$18,256,861              | \$7,064,749         | \$11,178,070              | \$18,242,818         | \$0                    | \$14,043           | \$7,348,613          | \$8,294,461          | \$9,962,400            | \$945,848              |
| 2 Davidson K-8 Conversion                           | \$9,500,000                | \$13,610,000              | \$2,130,689         | \$11,364,591              | \$13,495,280         | \$0                    | \$114,720          | \$13,460,953         | \$13,461,149         | \$148,851              | \$196                  |
| 3 J.M. Alexander Middle Replacement                 | \$30,672,000               | \$29,845,539              | \$4,502,518         | \$25,343,021              | \$29,845,539         | \$0                    | \$0                | \$29,845,539         | \$29,845,539         | \$0                    | \$0                    |
| 4 Nations Ford Elementary Replacement               | \$19,440,000               | \$19,231,603              | \$3,958,869         | \$15,272,733              | \$19,231,603         | \$0                    | \$0                | \$19,231,604         | \$19,231,604         | \$0                    | \$0                    |
| 5 Northwest School of the Arts                      | \$12,420,000               | \$12,868,718              | \$2,047,917         | \$10,820,801              | \$12,868,718         | \$0                    | \$0                | \$12,868,719         | \$12,868,719         | \$0                    | \$0                    |
| 6 Oakhurst STEAM Magnet Elementary/Starmount        | \$5,940,000                | \$5,407,812               | \$3,471,397         | \$1,936,415               | \$5,407,812          | \$0                    | \$0                | \$5,407,812          | \$5,407,812          | \$0                    | \$0                    |
| 7 Pre-K-8 Conversions Phase II: Ashley Park/ Bruns  | \$24,732,000               | \$19,791,457              | \$4,167,669         | \$15,563,538              | \$19,731,207         | \$0                    | \$60,250           | \$19,700,807         | \$19,700,807         | \$90,650               | \$0                    |
| 8 Selwyn Elementary                                 | \$2,592,000                | \$4,687,004               | \$744,378           | \$3,881,906               | \$4,626,284          | \$0                    | \$60,720           | \$4,624,831          | \$4,624,831          | \$62,172               | \$0                    |
| 9 Statesville Road Elementary                       | \$20,340,000               | \$20,648,510              | \$5,081,473         | \$15,567,037              | \$20,648,509         | \$0                    | \$0                | \$20,648,509         | \$20,648,509         | \$0                    | \$0                    |
| <b>Total Replacement &amp; Renovations</b>          | <b>\$134,276,000</b>       | <b>\$144,347,503</b>      | <b>\$33,169,659</b> | <b>\$110,928,111</b>      | <b>\$144,097,770</b> | <b>\$0</b>             | <b>\$249,733</b>   | <b>\$133,137,387</b> | <b>\$134,083,430</b> | <b>\$10,264,073</b>    | <b>\$946,043</b>       |
| <b><u>B. RESPONSE TO ENROLLMENT GROWTH</u></b>      |                            |                           |                     |                           |                      |                        |                    |                      |                      |                        |                        |
| 1 East Mecklenburg High Addition                    | \$12,744,000               | \$10,988,287              | \$3,369,684         | \$7,618,603               | \$10,988,287         | \$0                    | \$0                | \$10,988,287         | \$10,988,287         | \$0                    | \$0                    |
| 2 Myers Park High Addition                          | \$22,248,000               | \$11,070,580              | \$1,207,493         | \$9,833,448               | \$11,040,942         | \$0                    | \$29,639           | \$11,040,941         | \$11,040,941         | \$29,639               | \$0                    |
| 3 Northridge Middle Addition                        | \$6,448,000                | \$6,366,170               | \$2,114,306         | \$4,251,865               | \$6,366,171          | \$0                    | \$0                | \$6,366,171          | \$6,366,171          | \$0                    | \$0                    |
| 4 Olympic High Addition/Renovation                  | \$8,964,000                | \$8,947,310               | \$2,002,694         | \$6,944,615               | \$8,947,310          | \$0                    | \$0                | \$8,947,310          | \$8,947,310          | \$0                    | \$0                    |
| 5 South Mecklenburg High Addition                   | \$18,360,000               | \$16,307,355              | \$2,922,282         | \$13,385,073              | \$16,307,355         | \$0                    | \$0                | \$16,307,355         | \$16,307,355         | \$0                    | \$0                    |
| 6 Charlotte East Language Academy (FKA -New Lang    | \$30,376,000               | \$31,456,414              | \$5,740,242         | \$25,692,685              | \$31,432,927         | \$0                    | \$23,487           | \$31,387,929         | \$31,387,929         | \$68,485               | \$0                    |
| 7 Rea Farms STEAM Academy                           | \$31,376,000               | \$40,476,000              | \$9,134,265         | \$30,187,065              | \$39,321,330         | (\$5,460)              | \$1,160,130        | \$38,182,078         | \$38,832,660         | \$1,643,340            | \$650,582              |
| 8 Renaissance West STEAM Academy (FKA New Pre-      | \$30,376,000               | \$31,740,150              | \$5,667,328         | \$26,072,822              | \$31,740,150         | \$0                    | \$0                | \$31,698,952         | \$31,698,952         | \$41,199               | \$0                    |
| <b>Total Response to Enrollment Growth</b>          | <b>\$160,892,000</b>       | <b>\$157,352,267</b>      | <b>\$32,158,295</b> | <b>\$123,986,177</b>      | <b>\$156,144,471</b> | <b>(\$5,460)</b>       | <b>\$1,213,256</b> | <b>\$154,919,023</b> | <b>\$155,569,604</b> | <b>\$1,782,663</b>     | <b>\$650,582</b>       |
| <b><u>C. CONTINGENCY</u></b>                        |                            |                           |                     |                           |                      |                        |                    |                      |                      |                        |                        |
|   | \$0                        | \$0                       | \$0                 | \$0                       | \$0                  | \$0                    | \$0                | \$0                  | \$0                  | \$0                    | \$0                    |
| <b>Total Contingency</b>                            | <b>\$0</b>                 | <b>\$0</b>                | <b>\$0</b>          | <b>\$0</b>                | <b>\$0</b>           | <b>\$0</b>             | <b>\$0</b>         | <b>\$0</b>           | <b>\$0</b>           | <b>\$0</b>             | <b>\$0</b>             |
| <b>TOTAL LOCAL BOND PROGRAM</b>                     | <b>\$295,168,000</b>       | <b>\$301,699,771</b>      | <b>\$65,327,954</b> | <b>\$234,914,288</b>      | <b>\$300,242,242</b> | <b>(\$5,460)</b>       | <b>\$1,462,989</b> | <b>\$288,056,410</b> | <b>\$289,653,035</b> | <b>\$12,046,736</b>    | <b>\$1,596,625</b>     |

Original project estimated costs approved by the Board Of Education on July 23, 2013 and approved by the voters of Mecklenburg County on November 5, 2013.

Note: Mecklenburg County's appropriated interest from COPS to increase funding for the 2013 Bond Program.

CHARLOTTE-MECKLENBURG BOARD OF EDUCATION  
2017 BOND SERIES-CAPITAL IMPROVEMENT PROGRAM  
BUDGET STATUS REPORT

|   | Original Project<br>Budget | Current Project<br>Budget | Committed<br>Amount | Approved<br>Change Orders | Total Committed      | Pending<br>Commitments | To Be<br>Committed   | Prev Paid To<br>Date | Paid To Date         | Balance To<br>Complete | Monthly<br>Expenditure |
|---|----------------------------|---------------------------|---------------------|---------------------------|----------------------|------------------------|----------------------|----------------------|----------------------|------------------------|------------------------|
|   | (A)                        | (B)                       | (C)                 | (D)                       | (E)=C+D              | (F)                    | (G)=(B-E-F)          | (H)                  | (I)                  | (J)=(B-I)              | (K)=(I-H)              |
| <b><u>A. REPLACEMENT &amp; RENOVATIONS</u></b>      |                            |                           |                     |                           |                      |                        |                      |                      |                      |                        |                        |
| 1 Briarwood Elementary *                            | \$29,091,619               | \$31,962,730              | \$4,971,503         | \$26,609,642              | \$31,581,144         | \$64,749               | \$316,837            | \$25,460,830         | \$26,565,549         | \$5,397,181            | \$1,104,719            |
| 2 Bruns Academy Replacement                         | \$34,207,808               | \$39,784,927              | \$1,433,024         | \$218,050                 | \$1,651,074          | \$0                    | \$38,133,853         | \$0                  | \$0                  | \$39,784,927           | \$0                    |
| 3 Career & Technology Education Upgrades            | \$10,101,734               | \$10,159,765              | \$2,319,993         | \$4,099,152               | \$6,419,145          | \$71,334               | \$3,669,286          | \$2,134,414          | \$2,713,539          | \$7,446,226            | \$579,125              |
| 4 Collinswood K-8 *                                 | \$44,172,540               | \$41,547,540              | \$5,014,769         | \$36,476,435              | \$41,491,204         | \$0                    | \$56,336             | \$41,375,536         | \$41,384,602         | \$162,938              | \$9,067                |
| 5 East Mecklenburg HS                               | \$12,771,594               | \$15,058,594              | \$1,790,213         | \$11,387,595              | \$13,177,807         | \$73,040               | \$1,807,747          | \$3,490,432          | \$4,166,832          | \$10,891,762           | \$676,401              |
| 6 Garinger HS                                       | \$13,936,979               | \$5,986,979               | \$1,490,411         | \$3,475,359               | \$4,965,770          | \$12,168               | \$1,009,040          | \$230,136            | \$260,310            | \$5,726,669            | \$30,174               |
| 7 Harding University High *                         | \$18,330,263               | \$13,805,263              | \$2,047,347         | \$11,675,683              | \$13,723,031         | \$47,000               | \$35,232             | \$13,532,916         | \$13,532,916         | \$272,347              | \$0                    |
| 8 Charlotte-Mecklenburg Academy (FKA -EC Specialty  | \$18,957,960               | \$17,699,220              | \$2,175,504         | \$15,523,717              | \$17,699,220         | \$0                    | \$0                  | \$17,699,220         | \$17,699,220         | \$0                    | \$0                    |
| 9 Lansdowne Elementary                              | \$29,391,270               | \$35,378,834              | \$4,140,580         | \$28,400,521              | \$32,541,101         | \$0                    | \$2,837,733          | \$9,857,872          | \$11,875,265         | \$23,503,569           | \$2,017,393            |
| 10 Lincoln Heights Elementary                       | \$3,740,478                | \$4,588,675               | \$577,649           | \$26,774                  | \$604,423            | \$0                    | \$3,984,252          | \$383,738            | \$383,738            | \$4,204,937            | \$0                    |
| 11 Montclair Elementary Replacement *               | \$28,559,390               | \$28,559,390              | \$2,426,903         | \$26,050,937              | \$28,477,839         | \$0                    | \$81,551             | \$27,841,640         | \$27,949,025         | \$610,365              | \$107,385              |
| 12 Mountain Island k-8                              | \$9,218,439                | \$10,488,400              | \$1,224,516         | \$6,930                   | \$1,231,446          | \$0                    | \$9,256,954          | \$30,950             | \$110,671            | \$10,377,729           | \$79,721               |
| 13 Northwest School of the Arts                     | \$17,632,202               | \$20,467,000              | \$846,736           | \$117,644                 | \$964,380            | \$0                    | \$19,502,620         | \$0                  | \$0                  | \$20,467,000           | \$0                    |
| 14 Shamrock Gardens Elementary *                    | \$29,890,351               | \$32,358,351              | \$3,667,412         | \$26,053,763              | \$29,721,175         | \$25,803               | \$2,611,373          | \$8,543,795          | \$10,405,860         | \$21,952,491           | \$1,862,066            |
| 15 Sharon Elementary                                | \$7,706,528                | \$9,475,862               | \$1,443,396         | \$7,635,227               | \$9,078,622          | \$60,840               | \$336,399            | \$8,553,282          | \$8,564,721          | \$911,141              | \$11,439               |
| 16 South Mecklenburg HS                             | \$13,352,143               | \$15,622,927              | \$554,114           | \$94,238                  | \$648,352            | \$0                    | \$14,974,575         | \$2,362              | \$2,362              | \$15,620,565           | \$0                    |
| 17 E.E. Waddell Magnet HS                           | \$4,571,709                | \$5,137,367               | \$347,531           | \$0                       | \$347,531            | \$0                    | \$4,789,836          | \$70,966             | \$79,422             | \$5,057,945            | \$8,456                |
| 18 West Charlotte HS Replacement                    | \$109,977,166              | \$109,977,166             | \$11,909,489        | \$88,181,557              | \$100,091,046        | \$152,905              | \$9,733,215          | \$54,534,057         | \$57,578,399         | \$52,398,767           | \$3,044,342            |
| 19 West Mecklenburg HS                              | \$11,065,440               | \$10,850,902              | \$1,660,207         | \$8,788,782               | \$10,448,989         | \$56,163               | \$345,750            | \$9,004,719          | \$9,012,921          | \$1,837,981            | \$8,202                |
| 20 John Taylor Williams                             | \$13,964,339               | \$15,732,600              | \$1,760,020         | \$0                       | \$1,760,020          | \$0                    | \$13,972,580         | \$0                  | \$120,883            | \$15,611,717           | \$120,883              |
| <b>Total Replacement &amp; Renovations</b>          | <b>\$460,639,952</b>       | <b>\$474,642,492</b>      | <b>\$51,801,315</b> | <b>\$294,822,005</b>      | <b>\$346,623,320</b> | <b>\$564,002</b>       | <b>\$127,455,170</b> | <b>\$222,746,863</b> | <b>\$232,406,236</b> | <b>\$242,236,256</b>   | <b>\$9,659,373</b>     |
| <b><u>B. RESPONSE TO ENROLLMENT GROWTH</u></b>      |                            |                           |                     |                           |                      |                        |                      |                      |                      |                        |                        |
| 1 South Academy of International Languages          | \$45,359,367               | \$41,959,367              | \$6,012,530         | \$35,673,741              | \$41,686,271         | \$0                    | \$273,096            | \$39,309,603         | \$39,652,822         | \$2,306,545            | \$343,219              |
| 2 North Academy of World Languages (FKA - New K-8   | \$45,359,367               | \$42,359,367              | \$6,278,171         | \$35,941,776              | \$42,219,948         | \$16,857               | \$122,562            | \$40,730,166         | \$40,955,190         | \$1,404,177            | \$225,023              |
| 3 South Pine Academy (FKA - New ES Nations Ford, S  | \$29,173,829               | \$31,272,550              | \$6,782,970         | \$24,425,881              | \$31,208,851         | \$0                    | \$63,699             | \$26,781,452         | \$26,858,654         | \$4,413,896            | \$77,202               |
| 4 New Elementary School - Bain/Lebanon Relief       | \$29,988,332               | \$30,455,951              | \$3,383,090         | \$24,530,000              | \$27,913,090         | \$0                    | \$2,542,861          | \$4,305,009          | \$5,868,076          | \$24,587,875           | \$1,563,067            |
| 5 New Elementary School - Windsor Park Relief *     | \$30,422,230               | \$37,197,022              | \$4,539,888         | \$177,404                 | \$4,717,292          | \$0                    | \$32,479,730         | \$426,352            | \$1,844,014          | \$35,353,008           | \$1,417,662            |
| 6 New Elementary School - Elon/Hawk Ridge Relief *  | \$30,426,712               | \$43,856,962              | \$14,008,721        | \$47,300                  | \$14,056,021         | \$0                    | \$29,800,940         | \$11,333,221         | \$11,513,891         | \$32,343,071           | \$180,670              |
| 7 New Elementary School - Hidden Valley Relief      | \$30,518,345               | \$34,697,022              | \$4,127,852         | \$241,875                 | \$4,369,727          | \$14,208               | \$30,313,087         | \$1,504,519          | \$1,662,032          | \$33,034,990           | \$157,513              |
| 8 New High School - Olympic Relief                  | \$109,908,793              | \$109,908,793             | \$11,334,087        | \$91,828,509              | \$103,162,596        | \$155,164              | \$6,591,033          | \$60,146,319         | \$64,060,348         | \$45,848,445           | \$3,914,029            |
| 9 New High School - South Meck/Ardrey Kell Relief * | \$110,287,621              | \$154,930,460             | \$11,233,923        | \$711,379                 | \$11,945,302         | \$0                    | \$142,985,158        | \$3,634,807          | \$3,722,010          | \$151,208,450          | \$87,203               |
| <b>Total Response to Enrollment Growth</b>          | <b>\$461,444,596</b>       | <b>\$526,637,493</b>      | <b>\$67,701,233</b> | <b>\$213,577,865</b>      | <b>\$281,279,099</b> | <b>\$186,229</b>       | <b>\$245,172,166</b> | <b>\$188,171,448</b> | <b>\$196,137,037</b> | <b>\$330,500,456</b>   | <b>\$7,965,589</b>     |
| <b><u>C. CONTINGENCY</u></b>                        |                            |                           |                     |                           |                      |                        |                      |                      |                      |                        |                        |
|   | \$0                        | \$18,000,000              | \$0                 | \$0                       | \$0                  | \$0                    | \$18,000,000         | \$0                  | \$0                  | \$18,000,000           | \$0                    |
| <b>Total Contingency</b>                            | <b>\$0</b>                 | <b>\$18,000,000</b>       | <b>\$0</b>          | <b>\$0</b>                | <b>\$0</b>           | <b>\$0</b>             | <b>\$18,000,000</b>  | <b>\$0</b>           | <b>\$0</b>           | <b>\$18,000,000</b>    | <b>\$0</b>             |

**CHARLOTTE-MECKLENBURG BOARD OF EDUCATION**  
**2017 BOND SERIES-CAPITAL IMPROVEMENT PROGRAM**  
**BUDGET STATUS REPORT**

|                                 | Original Project<br>Budget | Current Project<br>Budget | Committed<br>Amount  | Approved<br>Change Orders | Total Committed      | Pending<br>Commitments | To Be<br>Committed   | Prev Paid To<br>Date | Paid To Date         | Balance To<br>Complete | Monthly<br>Expenditure |
|---------------------------------|----------------------------|---------------------------|----------------------|---------------------------|----------------------|------------------------|----------------------|----------------------|----------------------|------------------------|------------------------|
|                                 | (A)                        | (B)                       | (C)                  | (D)                       | (E)=C+D              | (F)                    | (G)=(B-E-F)          | (H)                  | (I)                  | (J)=(B-I)              | (K)=(I-H)              |
| <b>TOTAL LOCAL BOND PROGRAM</b> | <b>\$922,084,548</b>       | <b>\$1,019,279,985</b>    | <b>\$119,502,549</b> | <b>\$508,399,870</b>      | <b>\$627,902,418</b> | <b>\$750,231</b>       | <b>\$390,627,336</b> | <b>\$410,918,311</b> | <b>\$428,543,273</b> | <b>\$590,736,712</b>   | <b>\$17,624,962</b>    |

Original project estimated costs approved by the Board Of Education on July 25, 2017 approved by the voters of Mecklenburg County on November 7, 2017.

\*Project included in \$33.2M early funding approved by Board Of Education on August 9, 2016 and Mecklenburg Board of County Commissioners on September 6, 2016. On February 19, 2019 an additional \$8M was approved for New Elementary School - Elon/Hawk Ridge Relief site.

\*Current Budget includes an additional \$89.2M to fund increase land and construction costs. The additional funds were approved by the Board of County Commissioners on June 16, 2020.

**Charlotte-Mecklenburg Board of Education**  
**Approved Construction or Repair Change Orders\***  
**Reporting Period: September 2021**

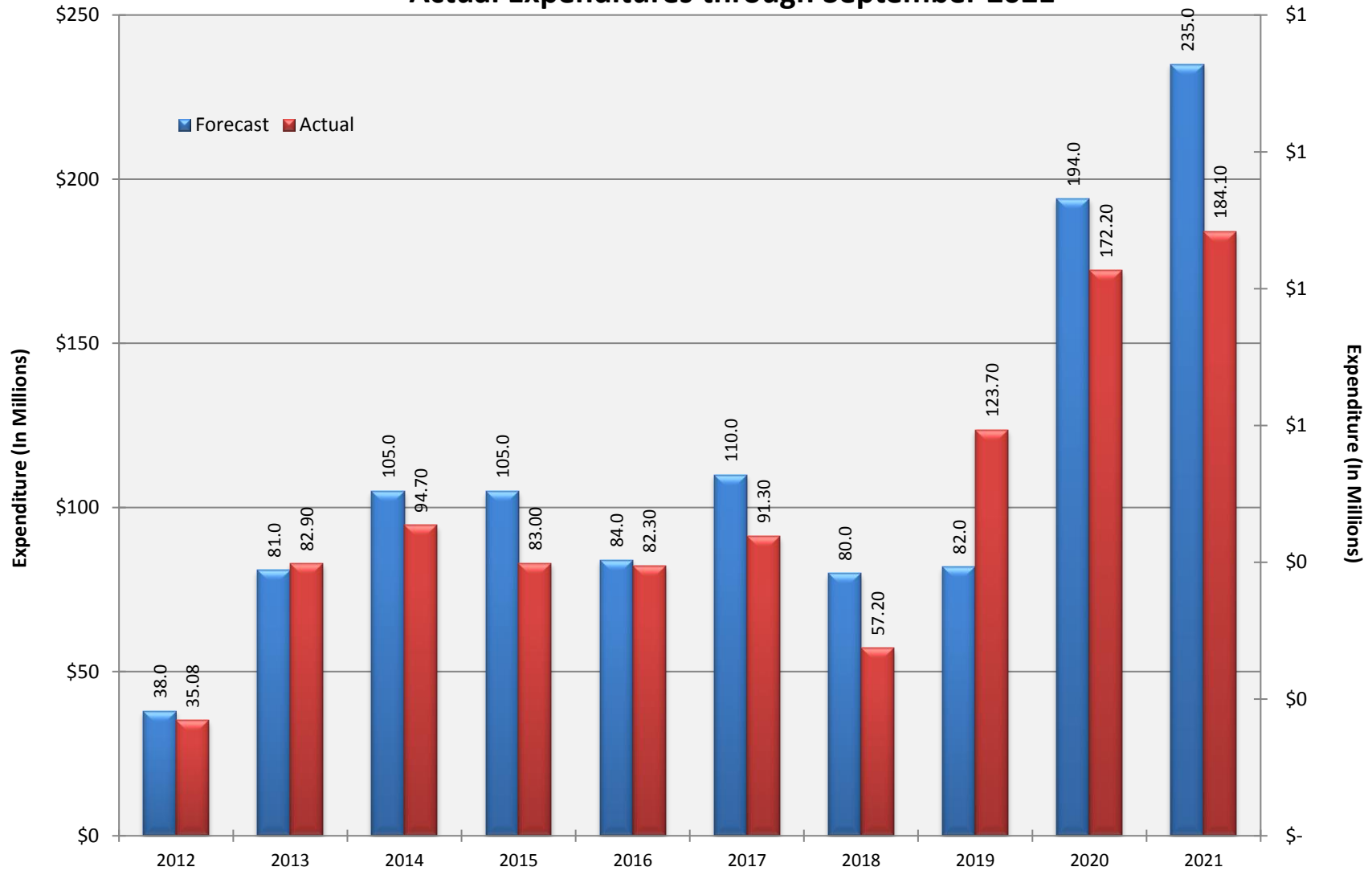
| <b>Funding Source</b> | <b>Project Name</b>               | <b>Contractor</b>           | <b>Description</b>            | <b>Change Order Amount</b> | <b>Revised Contract Value</b> |
|-----------------------|-----------------------------------|-----------------------------|-------------------------------|----------------------------|-------------------------------|
| 2017 Bond             | Collinswood Language Academy (17) | Turner Construction Company | Final Contract Reconciliation | (\$82,354.82)              | \$36,688,349.18               |
|                       |                                   |                             |                               |                            |                               |

\* Not previously presented to the Board of Education for Approval (less than \$90,000)



# 10 YEAR EXPENDITURE SUMMARY

Forecast Expenditure versus  
Actual Expenditures through September 2021



# GLOSSARY

# Glossary

---

- **Project Management** – This section includes updates from our project managers and describes the currently active construction projects. This includes from Board of Education award thru final completion.
- **Design and Bidding** – This section contains updates from our design managers on the projects currently in the design phase. This phase from design award to Board of Education award of construction.
- **Controls** – Section includes misc. updates from controls group including expenditures, related Board of Education awards during the reporting period, cash flow information. This section covers all projects from approved bond through final expenditures and bond close with the county.
- **MWSBE** – Contains updates from the MWSBE Director and team, including current activity and summaries of the participation by MWSBE providers on our program.
- **Bond Progress Summary** – Provides a summary of bond financials including bond value, committed/pending amounts, paid to date, expended this month.
- **Project Procurement Dates** - Next 90 Days major project bid activity.
- **Mobile Swing Space Utilization** – Includes a summary of program related swing space currently in use and the schedule of use.
- **Bond Summary Schedule** – Current program summary schedule including planned design, construction and FF&E. These activities are fed from detailed schedules and are fine-tuned as project information is available.
- **Project Contractor Teams**; Provides summary of turnover dates for completed/closed projects since 2010 including architects/designers and contractors.
- **School Site Location Maps** – General location of bond projects (2017) by type.
- **Project Status Report** – This section of the report provides a summary of the bond project scope, current estimate (all sources), planned occupancy/actual occupancy date. It also provides a current status of the design phase, construction progress and a brief update. The report currently includes 2013 and 2017 bond projects that have or will be completed after to August 2016.
- **MWSBE Participation Report** – The MWSBE report provides a summary of the participation on the 2013 & 2017 Bond funded projects.
- **Project Progress Photos** – Includes photos of active construction projects.
- **Budget Summary Reports** – These reports are by funding source and summarize financial activity to date on the projects. This includes original and current project estimates, committed values, amounts paid to date, balances and monthly expenditures.
- **Change Orders < \$90,000** – This month's approved construction or repair change orders < \$90,000.
- **Expenditure Summary** – Provides a summary of Bond Expenditures by calendar year.