

# Capital Improvement Program

Monthly Bond Report  
August 2021



South Academy of International Languages



## **CAPITAL PROGRAM SERVICES** Capital Improvement Program

### **AUGUST 2021** **MONTHLY BOND REPORT**

#### **PROGRAM OVERVIEW**

- Project Management
- Design and Bidding
- Controls
- MWSBE
- Bond Progress Summary
- Project Procurement - Next 90 Days
- Swing Space Utilization
- Bond Summary Schedule
- Project Contractor Teams; Projects in Design/Construction and Substantially Completed/Closed
- School Site Location Maps
  - Elementary Schools
  - Middle Schools
  - High Schools & Specialty Schools

#### **PROJECT STATUS REPORT**

#### **MWSBE PARTICIPATION REPORT**

#### **PROJECT PROGRESS PHOTOS**

#### **PROJECT CONTROLS**

- Budget Summary Reports
  - 2013 Bond Series
  - 2017 Bond Series
- Change Orders < \$90,000
- Expenditure Summary

#### **GLOSSARY**

# PROGRAM OVERVIEW

## PROJECT MANAGEMENT

The following is a summary of the activity on the bond funded projects in construction during the month of August.

The **Briarwood Elementary Replacement School** was occupied in August. The team continues to focus on the completion of the punch list and commissioning items. The construction manager began preparing for the phase two construction with the installation of construction fencing and salvaging operations of the old building. The remaining demolition and site work is scheduled to be complete in 2022.

The **CTE projects at Harding, South Mecklenburg and Olympic** continued construction in August. The Olympic project reached substantial completion and was successfully occupied by staff and students. The sites at Harding and South Mecklenburg completed underground electrical and plumbing and got the floor slabs poured. Interior walls are being framed and in-wall rough ins have started throughout. The areas outside the construction zone at Harding and South Mecklenburg have been isolated and turned back over for school use. The Harding project consists of renovations to existing classrooms in the auditorium building to develop a suite of technology classrooms. The project at Olympic included electrical up fits to the existing carpentry lab and added demonstration learning booths for plumbing and electrical trades. The project at South Mecklenburg consists of renovating the old kitchen area into a culinary arts lab and classroom. Harding and South Mecklenburg are scheduled for completion in January 2022.

The construction manager for **East Mecklenburg High School** successfully coordinated with Duke Energy to have the underground power line that feeds the 500 Building rerouted. This allowed the foundations to be completed and the floor slab will be poured shortly to complete the slab on grade. The utilities crossing the bus lot have been completed and sections repaved. The new classroom wing is scheduled for occupancy in August 2022.

The **Garinger Addition and Renovation** construction manager performed the demolition of the existing conditions and grading operations. The footing crews installed a significant amount of below grade footings and concrete block. The plumbing and electrical contractors mobilized to begin the under slab rough-ins. The addition is scheduled to be occupied August of 2022 and the renovation to be occupied in January of 2023.

The **Lansdowne Elementary School** construction manager is nearing completion of the slab on grade sections of the building. As the CMU and structural steel have progressed the in-wall conduits have followed. The site work has continued with installation of the underground storm water detention structure and new utilities to feed the building. The temporary bus lot also had some underground utilities that crossed and the trenches were compacted and patched prior to staff and student occupancy. Occupancy of the replacement school is scheduled for August 2022. Upon completion of the new building, demolition and remaining site work will commence and will be completed in 2023.

This month the construction manager for the **Montclair Elementary School** completed the final phase of work on the project. The new 45-classroom elementary school building was occupied in August.

The **New Elementary School (Bain, Lebanon, Piney Grove Relief)** under slab plumbing and electrical rough-ins were installed and the first floor slab was completed. This allowed the load bearing masonry and structural steel to progress. The top soil has been spread on areas outside the building and parking footprint. The new front parking lot is on grade and compacted stone set. The underground storm water system is being installed by the grading contractor. This new 45-classroom school will be located next to the existing Mint Hill Middle School. The project is scheduled for occupancy in August 2022.

The construction manager for the **New High School Olympic Relief** continued throughout the building with exterior and interior metal studs and drywall installation. The mechanical, electrical and plumbing (MEP) trades continued with above ceiling and in-wall rough in while focusing on work in the mechanical and electrical rooms. Temporary air conditioning units have been installed throughout the facility to allow finish work to begin. Drywall has been



installed on multiple floors of the classroom and administration wing. The painter mobilized in the classroom wing following the drywall installation. The pool contractor poured the bottom of the pool. The roofing system was completed on the auditorium building which has allowed progress of the MEP trades in this space. The athletic field contractor mobilized and began the installation of the below grade drainage system and stone base. The contractor continued to be focused on the maintaining the erosion control measures on the site. The 100-classroom relief high school is scheduled to be occupied in August 2022.

The construction and FF&E for the **North Academy of World Languages** (*fka New K-8 Language Immersion North*) was completed. The project closeout and financial reconciliation process with the construction manager is underway. The project was occupied in August.

The **Shamrock Gardens Elementary School** construction manager continued with activities throughout the building. The structural steel and metal decking is nearing completion on the classroom wing. The MEP trades focused on above ceiling in the kitchen and multipurpose rooms. The mason continued installing the exterior spray foam and brick veneer. The roofing contractor mobilized on site and began installations in the available areas. The site work contractor continued with installation of storm piping and stone base in the parking lots. The new 45-classroom replacement elementary school is scheduled to be occupied August 2022.

The construction manager for the **Sharon Elementary School Building Addition** construction and FF&E was completed. The new building and cafeteria expansion were occupied. The project closeout and final financial reconciliation process with the construction manager is underway. The 16-classroom addition and cafeteria expansion has been occupied.

The construction manager for the **South Academy of International Languages** (*Fka New K-8 Language Immersion South*) worked diligently on the punch list and commissioning items and has the list down to a minimal amount. FF&E was completed and the school was occupied.

The **South Pine Academy** (*fka New Elementary School (Nations, Sterling, Steele Creek Relief)*) construction manager completed the new building and is working through the commissioning and punch list items. FF&E was completed and the new 45-classroom relief elementary school was occupied in August.

The trade contractors continue to work throughout the **West Charlotte High School** facility. The crews are working from rough-ins to interior finishes. The roof is installed and most windows and openings are sealed as designed. This has allowed finishes to progress including drywall and paint. The mechanical contractor has focused on getting systems operational so temporary conditioned air can be supplied. The site contractor has maintained erosion control and been able to get most of the Phase 1 curb and gutter completed allowing compacted stone to follow. The project team continues to work through supply chain logistics and issues with material availability. The project is scheduled to be occupied August 2022. Once the new school is occupied the existing school will be demolished and final site work will take place with final project completion in August 2023.

The **West Mecklenburg High School Gym** construction manager finalized construction and the building was occupied. The project closeout and financial reconciliation process with the construction manager is underway.

## DESIGN AND BIDDING

The following is a summary of the activity on the bond funded projects in design and bidding phase during the month of August.

The **E.E. Waddell High School** project is currently in the design development phase. The design managers are continuing to coordinate scope with CMS operations for the repurpose project. The design development submission

has been reviewed and returned to the architect for incorporation into the construction document phase. The project consists of light renovations to the existing science classrooms, maker space, lobby, HVAC work, limited VCT and acoustical ceiling replacement. This project is scheduled to start construction by summer of 2022 and be completed prior to occupancy in August of 2023.

The **John Tyler Williams Secondary Montessori** project is in the schematic design phase. Review comments have been returned to the architect for incorporation into the design development phase. The project's scope of work will focus on required civil improvements, architectural, and MEP renovations to selected buildings on the campus. The project is scheduled to be completed in August 2024.

The **Mountain Island Lake Academy** project is in the schematic design phase. This project consists of a building addition containing a middle school gymnasium, visual and performing arts classrooms. To address long lead time concerns the development of an early steel procurement package is in progress. This project is scheduled to start in the spring of 2022 and is scheduled for completion in August 2023.

The **New Elementary School (Elon, Hawk Ridge, Polo Relief)** project is in the design development phase. The traffic study scope continues to be development with NCDOT/CDOT; revisions are in progress and will be resubmitted in September. The project's rezoning application/package has been completed and released to the Zoning Department; comments have been received and responses will be returned mid September. To address long lead time concerns the development of an early steel procurement package is in progress. This new 45-classroom school will be located across from the Ardrey Kell High School and is scheduled to start in the spring of 2022 and is scheduled for completion in August 2023.

The **New Elementary School (Hidden Valley, JW Grier, Newell Relief)** project has completed of design development documents and the review comments are being incorporated into the construction documents. The traffic analysis study has been submitted to NCDOT and will be complete in September. To address long lead time concerns the development of an early steel procurement package is in progress. This new 45-classroom school will be located next to Northridge Middle School and is scheduled for occupancy in August 2023.

The **New Elementary School (Windsor, Winterfield, Idlewild Relief)** project continues to progress in the design development phase. Due diligence deliverables were submitted to the design team for development purposes. The project will require an individual permit from Corps of Engineers. To address long lead time concerns the development of an early steel procurement package is in progress. This new 45-classroom school facility is scheduled for occupancy in August 2023.

The **New High School (South, Ardrey Kell Relief)** project has progressed to the construction document phase. The projects rezoning application/package has been completed and released to the Zoning Department; comments have been received and responses will be returned in early September. CDOT's comments on the traffic analysis study have been received and discussions continue with CDOT. Army Corps of Engineers permit package has been submitted for approval. This project consists of a new 100-classroom high school with athletic play fields and stadium.

The teams continue to review the schedules for the projects in design with the construction managers to identify and address the current material delivery delays due to supply chain issues e.g. bar joist, metal decking, LED lighting, insulation, metal studs, etc. As noted above early steel procurement packages are in progress to mitigate extended lead times.

## CONTROLS

Expenditures for the month of August were \$18.5M. This brings our fiscal year to date total to \$38.4M against the 2022 fiscal year cash flow projection of \$260M. The Controls team continues the reconciliation and closeout of completed 2013 and 2017 bond projects. Available funding is being accumulated to address potential supply chain and increased construction costs related to the COVID-19 pandemic.

The Controls team continues to submit notices of potential changes at school sites so senior staff can adequately evaluate any issues. Additionally, the Controls team continues the processing of contracts, invoices, preparing notices of potential change, change orders, pay applications and check requests for projects under construction. Captured construction cost data is used to prepare financial reports such as detailed cost reports, budget summaries, reconciliation to CMS books, revisions to and updated cash flows and complete special financial requests by CMS and Mecklenburg County. This process, along with data compilation and management, allows senior staff to provide the proper guidance/direction and accurate information to the program stakeholders.

No Bond related consent items were submitted for Board of Education approval during the month of August 2021.

## MWSBE

As of August 2021 the overall MWSBE utilization percentage related to design and construction of the 2017 bond projects is 49.68% which includes 21.32% participation by minority contractors, 27.43% by women contractors and 0.93% participation by small business contractors. This accounts for more than \$278 million of utilization by Minority, Women and Small Business Contractors.

The Diversity & Inclusion Office of Charlotte-Mecklenburg Schools continued to conduct several individual virtual orientations with new MWSBE contractors and prime contractors. In addition, team members also attended/hosted the following outreach sessions/pre-bid meetings and/or workforce development opportunities:

- Carolinas-Virginia Minority Supplier Development Council Business Opportunity Conference
- Supplier Diversity & Inclusion Roundtable
- Charlotte MED Week 2021 planning meeting

### Workforce Development:

Capital Program Services and the Office of Diversity and Inclusion student intern presented his final project that highlighted his key learnings, career options explored and understanding of the various career paths in construction related fields. The intern also shared areas of opportunity to improve the internship experience. Overall, the internship was viewed as being very helpful in assisting with college/work career decisions. Special thank you to Benesch, CES Group Engineers (WBE) and Little Diversified Architects for sharing their expertise and industry best practices. Rodgers/Holt Brothers provided a site tour of the West Charlotte construction site and the student intern was provided his own personal protective equipment as a gift that included hardhat, safety vest, goggles and gloves.

## BOND PROGRESS SUMMARY As of August 2021

Funding Source and Value		Amount Committed/Pending	Amount Paid to Date	Amount Expended This Period
2013 Bond	\$301,699,770	\$300,699,770	\$288,056,410	<b>\$6,843</b>
2017 Bond	\$1,019,279,985	\$627,719,711	\$410,918,311	<b>\$18,539,083</b>
<b>Grand Total</b>	<b>\$1,320,979,755</b>	<b>\$928,419,481</b>	<b>\$698,974,721</b>	<b>\$18,545,926</b>

---

## UPCOMING MAJOR CONSTRUCTION PROCUREMENT DATES *Three Month Look Ahead*

### **School Name**

### **Bid Dates\***

**New Elementary (Elon Park, Hawk Ridge, Polo Ridge)  
Structural Steel Package**  
*(bids managed by Little Architectural)*

**September 2021**

**New Elementary (Hidden Valley, JW Grier, Newell)  
Structural Steel Package**  
*(bids managed by ADW Architects)*

**November 2021**

**New Elementary (Windsor, Winterfield, Idlewild)  
Structural Steel Package**  
*(bids managed by Neighboring Concepts)*

**November 2021**

*\* NOTE: Work In Progress...Dates Subject to Change.*

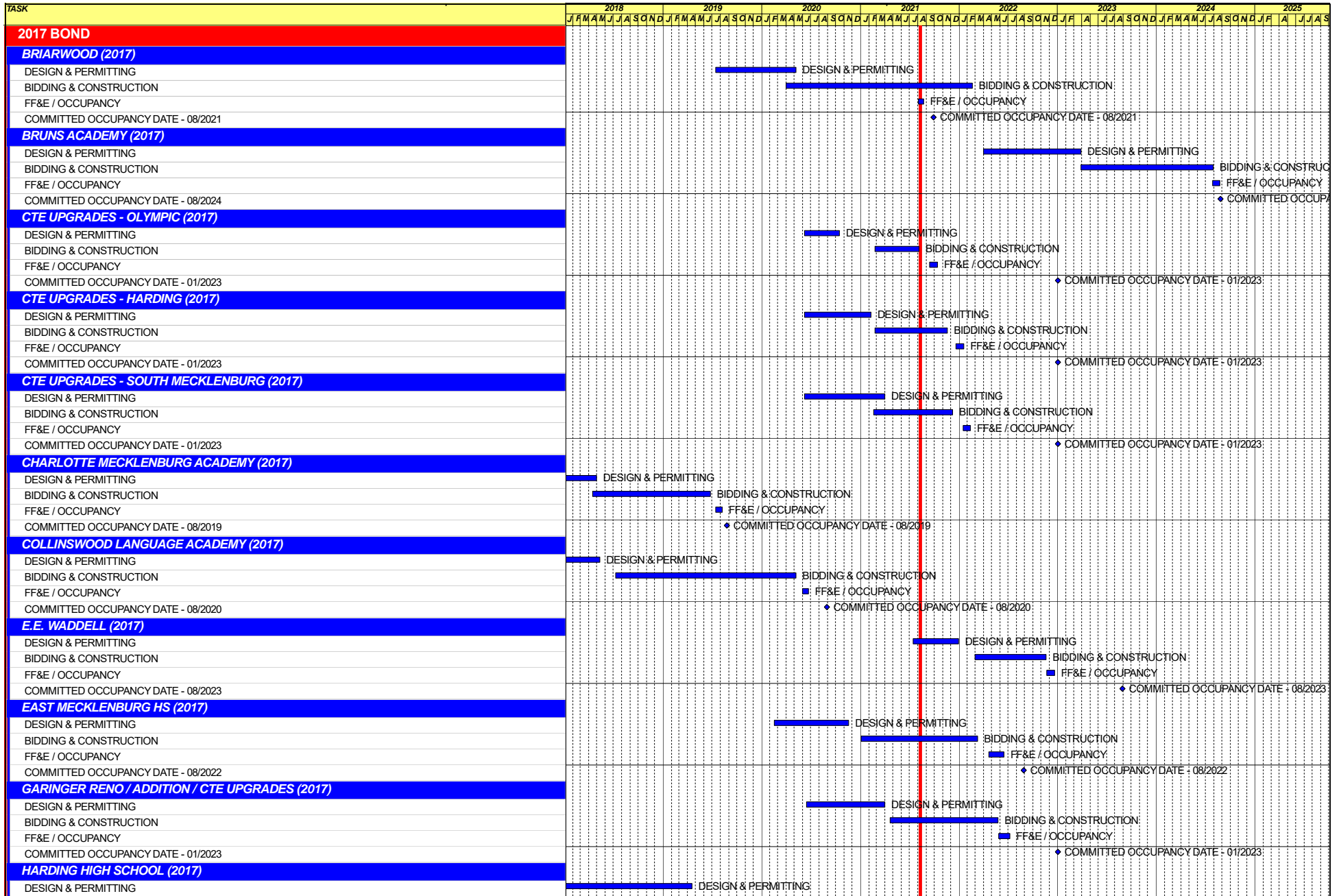
---

## SWING SPACE UTILIZATION

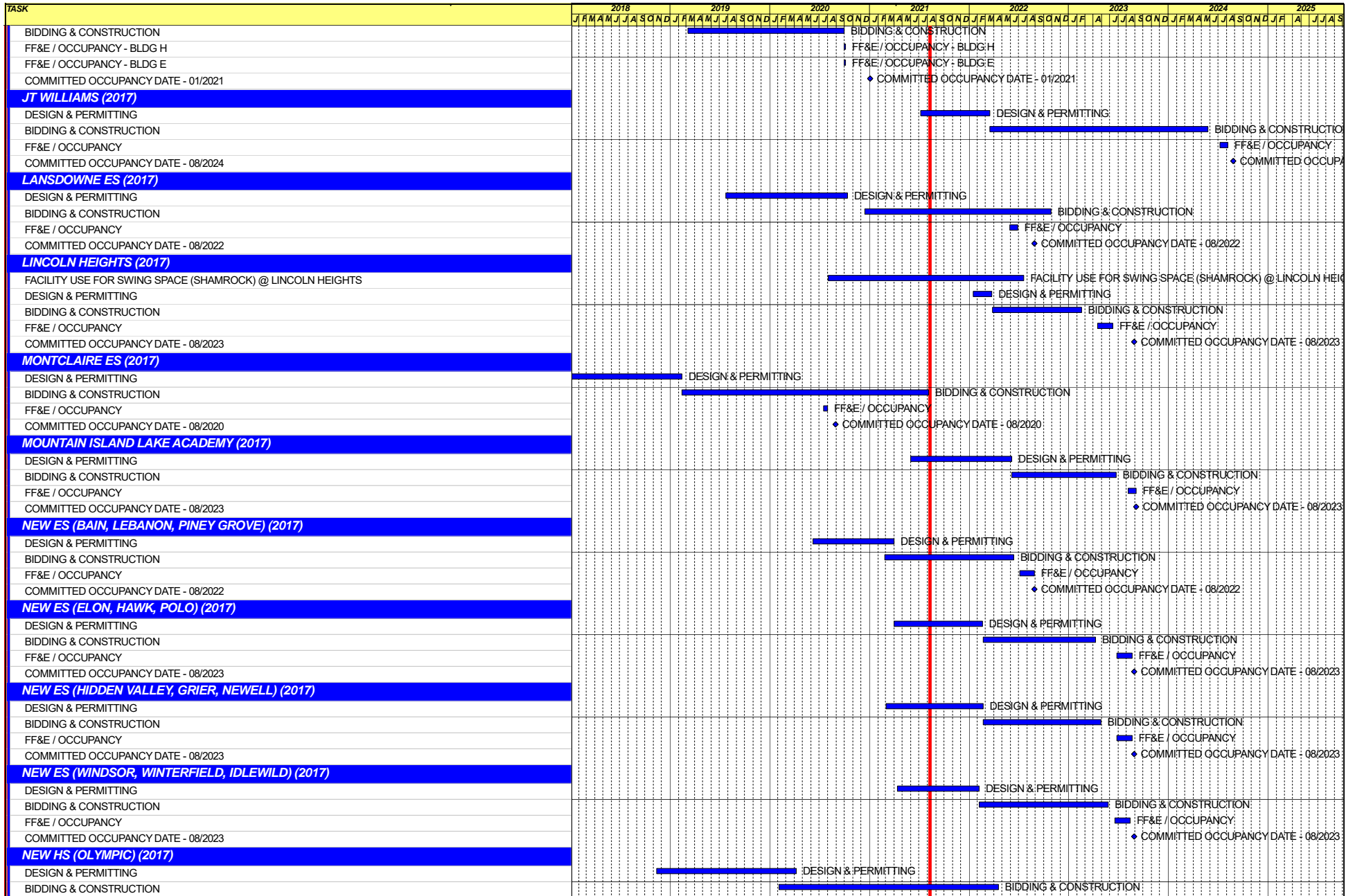
Creating a temporary space for students and staff to occupy during construction on a school’s campus has proven to be beneficial to the project’s schedule and cost and overall safety and efficiency of school operations. When the renovation or expansion of a facility is performed and the facility must remain functionally operational, there are benefits to the owner in using swing space.

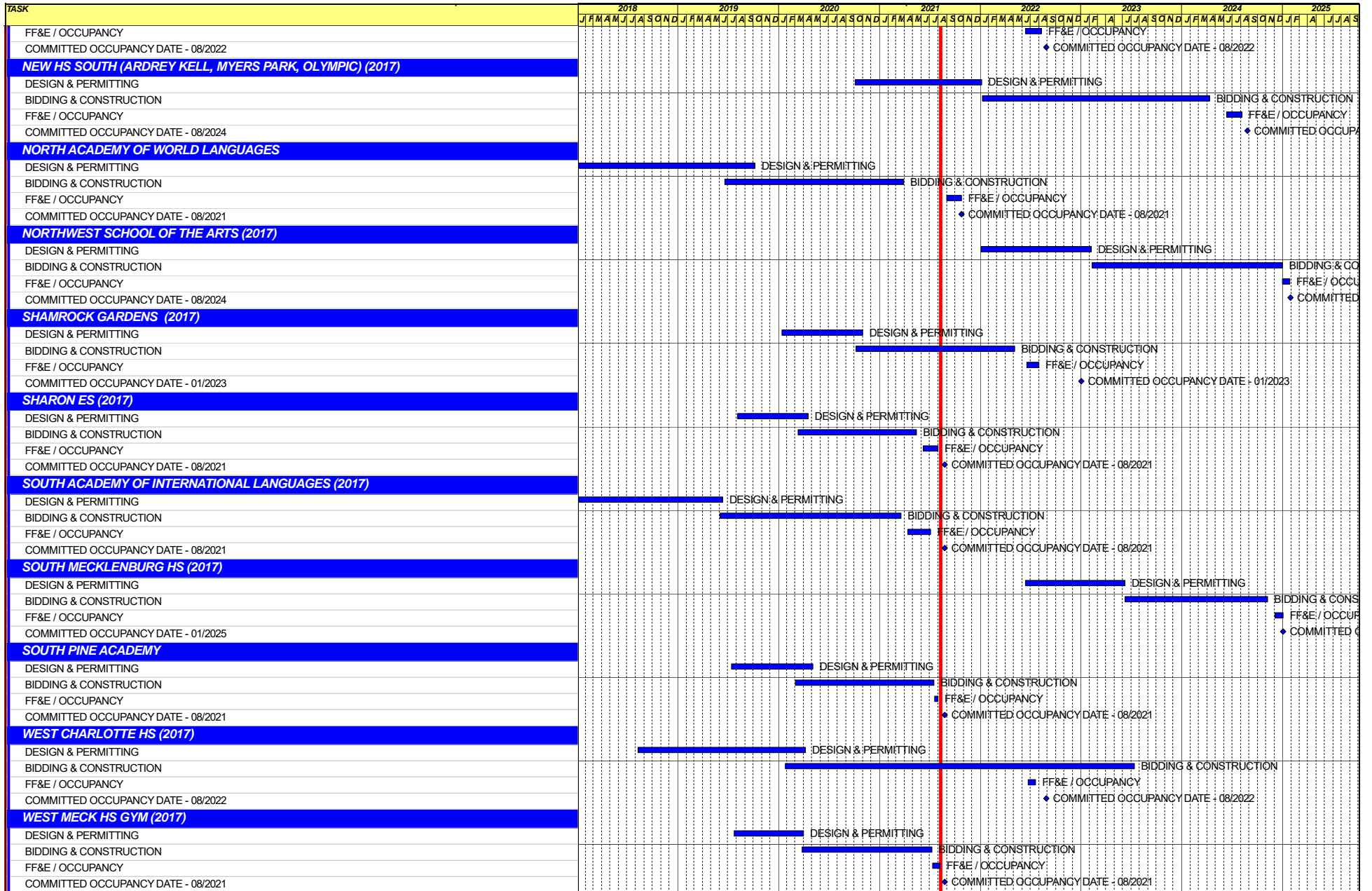
We have successfully utilized both onsite and offsite swings. The most desirable swings are “offsite” ones. Onsite swing using mobiles or modulars, likewise has been successfully used. The following is a summary of current swing options planned or in use.

<u>School</u>	<u>No. of Mobiles/Relocation Site</u>	<u>Status (From – To)</u>
Shamrock	Lincoln Heights	August 2020 – August 2022









Capital Improvements Program  
***Projects in Design or Under Construction***

School	Architect	General Contractor/CM
<b>Projects In Design</b>		
E.E. Waddell (17)	Moseley	TBD
J.T. Williams (17)	FWA	New Atlantic
Lincoln Heights Repurpose (17)	Neighboring Concepts	TBD
Mountain Island School (17)	ADW	Whiting-Turner
New ES (Elon,Hawk Ridge, Polo Ridge) (17)	Little Diversified	Balfour Beatty
New ES (Hidden Valley, JW Grier, Newell) (17)	ADW	Edifice, Inc.
New ES (Windsor, Winterfield, Idlewild) (17)	Neighboring Concepts	Rodgers-Holt Brothers
New HS (South, Ardrey) (17)	Ratio	Messer
<b>Projects in Bid/Award/Construction Phase</b>		
CTE (Harding, Olympic, South) (17)	MPS	Branch Brownstone
East Mecklenburg High School (17)	Morris Berg	Turner Construction
Garinger Addition/Renovation & CTE (17)	LS3P	Balfour Beatty
Lansdowne Elementary School Replacement (17)	Perkins Eastman	Edifice, Inc.
New ES (Bain, Lebanon Rd, Piney Grove) (17)	FWA	Metcon
New High School (Olympic Relief) (17)	Little Diversified	Edifice, Inc.
Shamrock Gardens Elementary School Replacement (17)	Little Diversified	Rodgers-Holt Brothers
West Charlotte High School (17)	LS3P	Rodgers-Holt Brothers

Capital Improvements Program  
***Projects Substantially Completed/Closed \****

School	Turnover Year	Architect	General Contractor
Briarwood Elementary School Replacement (17)	Aug-21	ADW	New Atlantic Contracting
Montclair Elementary School (17)	Aug-21	WHN	Messer Construction
North Academy of World Languages (17)	Aug-21	ADW	New Atlantic Contracting
Sharon Elementary School (17)	Aug-21	Clark Nexsen	Samet
South Academy of International Languages (17)	Aug-21	FWA	Messer Construction
South Pine Academy (17)	Aug-21	FWA	Metcon
West Mecklenburg Gym (17)	Aug-21	Moseley	Barnhill/D.A. Everett
Collinswood Language Academy (17)	Aug-20	Perkins Eastman	Turner Construction
Harding High School Renovation (17)	Aug-20	SFLA	Barnhill Contracting
Rea Farms STEAM Academy (13)	Aug-20	Little Diversified	Balfour Beatty
Ashley Park K-8 Conversion (13)	Aug-19	ADW	Turner Construction
Druid Hills K-8 Conversion (13)	Aug-19	ADW	Edifice, Inc.
Selwyn Elementary (13)	Aug-19	Clark Nexsen	Balfour Beatty
Charlotte Mecklenburg Academy (17)	Aug-19	KSQ	Edifice, Inc.
Davidson K-8 (13)	Aug-19	Little Diversified	Gilbane
CTE - North Mecklenburg High (13)	Aug-19	LS3P	Shiel Sexton
CTE - Garinger (13)	Mar-19	LS3P	Hostetter & Son
CTE - Independence (13)	Mar-19	LS3P	D.E. Brown
CTE - West Mecklenburg (13)	Mar-19	LS3P	Hostetter & Son
Charlotte East Language Academy (13)	Aug-18	Morris Berg	Edifice, Inc
Myers Park High School Phase 3 (13)	Aug-18	Boomerang Design	BE&K
Northridge Middle (13)	Aug-18	Morris Berg	Barnhill Contracting
Myers Park High Bldg 2 (13)	Feb-18	Boomerang Design	BE&K
East Mecklenburg High Addition (13)	Jan-18	Bergman (fna Gantt Huberman)	Edifice, Inc.
J.M. Alexander Middle (13)	Aug-17	FWA Group	Balfour Beatty
Northwest School of the Arts Renovation (13)	Aug-17	Moseley	Turner Construction
Renaissance West STEAM Academy (13)	Aug-17	Little Diversified	Rodgers Construction
South Mecklenburg High Addition (13)	Jul-17	SFLA	Barnhill Contracting
Myers Park High Bldg 1 (13)	Sep-16	Boomerang	KBR
Statesville Road Elementary (13)	Aug-16	ADW	JE Dunn
Nations Ford Elementary (13)	Aug-16	Wash Hatem Nelson	Messer Construction
Olympic High Addition (13)	Aug-16	McMillan, Pazdan, Smith	Turner Construction
Lawrence Orr Elementary (07)	Aug-15	Cort Architectural Group	DH Griffin/Metcon
Parkside Elementary (07)	Aug-15	Wash Hatem Nelson	Clancy & Theys
Hawthorne High Renovations (07)	Aug-15	Morris-Berg	Balfour Beatty
Newell Elementary (07)	Aug-15	Perkins Eastman	New Atlantic Contracting
Ranson Middle (07)	Aug-15	Morris-Berg	Edifice, Inc.
Vance High	Jan-15	LS3P	Matthews Construction Co., Inc.
Garinger High - Renovations/Addition	Aug-14	Adams Group Architects	Turner Construction
Olympic High - Stadium	Aug-14	Site Solutions	Turner Construction
West Mecklenburg High - Stadium	Aug-14	Site Solutions	Turner Construction
Collinswood - Indoor Air Quality	Aug-14	PEA	The Bowers Group
Lansdowne - Indoor Air Quality	Aug-14	AeroRaq	Tyler 2
McKee Road - Indoor Air Quality	Aug-14	McCracken & Lopez	Godfrey Construction
Garinger High - Track & Field	Jul-14	Site Solutions	Turner Construction
Independence High - Gym	Jun-14	Shook Kelly	Shelco, Inc. (CM)
Palisades Park Elementary	May-14	Wash Hatem Nelson	Clancy & Theys
East Mecklenburg High Auditorium	Jan-14	Gantt Huberman Associates	Godfrey Construction Co., Inc.
Pineville Elementary	Aug-13	Cort Architectural Group	Beam Construction Co., Inc.
Bain Elementary	Aug-13	ADW	Edison Foard
Grand Oak Elementary	Aug-13	ADW	Matthews Construction Co., Inc.
McClintock Middle	Aug-13	FWA Group	Shelco, Inc.

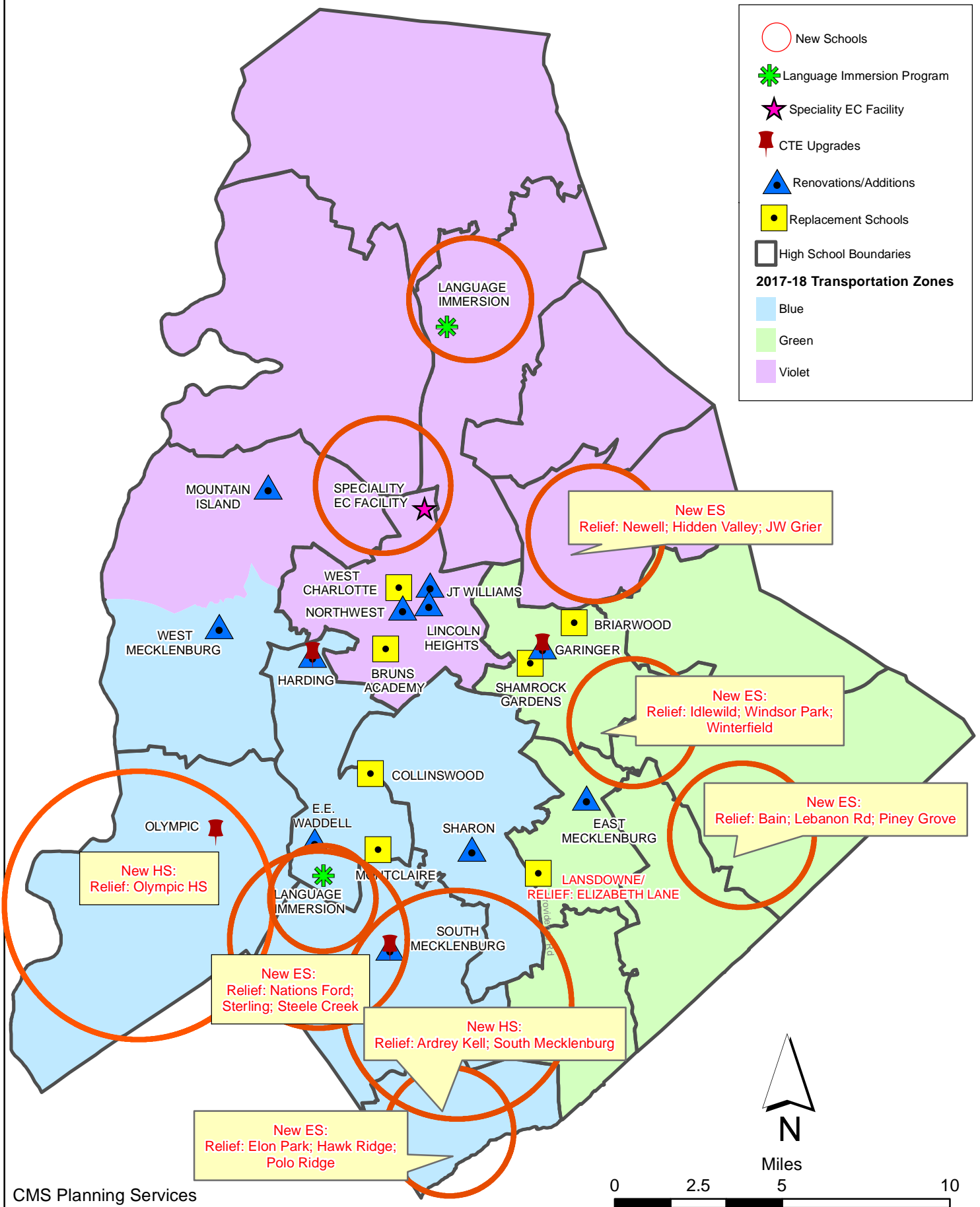
# Capital Improvements Program

## ***Projects Substantially Completed/Closed \****

School	Turnover Year	Architect	General Contractor
Sedgefield Elementary Demolition	Oct-12	Cort Architectural Group	EHG, LLC
Alexander Graham Middle Gym Reno	Aug-12	MBAJ Architecure	Edison Foard
First Ward - Demolition & Bus lot	Aug-12	MBAJ Architecure	T.K. Browne
South Meck High Parking Lot Renovation	Aug-12	Little Diversified	Sorenson Gross
Cochrane Middle - Kitchen	Aug-11	MBAJ Architecure	Sorenson Gross
Hough High	Aug-10	Little Diversified	Rodgers Construction
Rocky River High	Aug-10	Little Diversified	Balfour Beatty

*Projects closed prior to 2010 are not shown*

# CMS Capital Improvement Plan 2017 Bond Projects



# PROJECT STATUS REPORT





## Monthly Project Status 2017 Bond Summary August 2021

Project	Current Project Estimate	Project Scope	** Occupy On	Design Phase	Construction Progress	Project Status
Briarwood Elementary School (17)	\$ 31,962,730	45-classroom replacement facility; replaces school built in 1956.	August 2021	Complete	89 %	The Briarwood Elementary Replacement School was occupied in August. The team continues to focus on the completion of the punch list and commissioning items. The construction manager began preparing for the phase two construction with the installation of construction fencing and salvaging operations of the old building. The remaining demolition and site work is scheduled to be complete in 2022.
Bruns Academy (17)	\$ 39,784,927	New 45-classroom elementary school (K-5); replaces old school built in 1969.	August 2024	Not Started	0 %	This project is scheduled to start design Spring 2022.
Career and Technology Education (17)	\$ 10,159,765	Phase I CTE upgrades at Olympic, Harding, Garinger and South Mecklenburg.	January 2023	Complete	45 %	The CTE projects at Harding, South Mecklenburg and Olympic continued construction in August. The Olympic project reached substantial completion and was successfully occupied by staff and students. The sites at Harding and South Mecklenburg completed underground electrical and plumbing and got the floor slabs poured. Interior walls are being framed and in-wall rough ins have started throughout. The areas outside the construction zone at Harding and South Mecklenburg have been isolated and turned back over for school use. The Harding project consists of renovations to existing classrooms in the auditorium building to develop a suite of technology classrooms. The project at Olympic included electrical up fits to the existing carpentry lab and added demonstration learning booths for plumbing and electrical trades. The project at South Mecklenburg consists of renovating the old kitchen area into a culinary arts lab and classroom. Harding and South Mecklenburg are scheduled for completion in January 2022.

# Monthly Project Status

2017 Bond Summary

August 2021

Project	Current Project Estimate	Project Scope	** Occupy On	Design Phase	Construction Progress	Project Status
Charlotte-Mecklenburg Academy (17)	\$ 18,079,506	New EC school located on the old Statesville Elementary School site.	August 2019	Complete	100 %	Project is complete.
Collinswood Language Academy (17)	\$ 42,272,540	New 63-classroom K-8 facility on the site of the Smith Family Center.	August 2020	Complete	100 %	Project is complete.
E.E. Waddell (17)	\$ 5,137,367	Repurpose current E.E. Waddell to reopen as a magnet high school.	August 2023	Design Development	0 %	The E.E. Waddell High School project is currently in the design development phase. The design managers are continuing to coordinate scope with CMS operations for the repurpose project. The design development submission has been reviewed and returned to the architect for incorporation into the construction document phase. The project consists of light renovations to the existing science classrooms, maker space, lobby, HVAC work, limited VCT and acoustical ceiling replacement. This project is scheduled to start construction by summer of 2022 and be completed prior to occupancy in August of 2023.
East Mecklenburg High School (17)	\$ 15,058,594	This project will provide for the design, and construction of a new 30 classroom building.	August 2022	Complete	25 %	The construction manager for East Mecklenburg High School successfully coordinated with Duke Energy to have the underground power line that feeds the 500 Building rerouted. This allowed the foundations to be completed and the floor slab will be poured shortly to complete the slab on grade. The utilities crossing the bus lot have been completed and sections repaved. The new classroom wing is scheduled for occupancy in August 2022.
Garinger High School (17)	\$ 14,486,979	Project includes the design and construction for renovations of 300 building and a new 16 classroom building.	January 2023	Complete	5 %	The Garinger Addition and Renovation construction manager performed the demolition of the existing conditions and grading operations. The footing crews installed a significant amount of below grade footings and concrete block. The plumbing and electrical contractors mobilized to begin the under slab rough-ins. The addition is scheduled to be occupied August of 2022 and the renovation to be occupied in January of 2023.

# Monthly Project Status

2017 Bond Summary

August 2021

Project	Current Project Estimate	Project Scope	** Occupy On	Design Phase	Construction Progress	Project Status
Harding High School (17)	\$ 14,530,263	Renovation of the kitchen, cafeteria, existing gym (aux) and the addition of a new gym.	August 2020	Complete	99 %	Construction Manager has change items that will be completed summer 2021 and is finalizing financial reconciliation.
JT Williams (17)	\$ 15,732,600	Project includes building renovations to J.T. Williams Montessori magnet.	August 2024	Schematic	0 %	The John Tyler Williams Secondary Montessori project is in the schematic design phase. Review comments have been returned to the architect for incorporation into the design development phase. The project's scope of work will focus on required civil improvements, architectural, and MEP renovations to selected buildings on the campus. The project is scheduled to be completed in August 2024.
Lansdowne Elementary School (17)	\$ 37,128,834	New 45-classroom school; replaces old school built in 1959 and relieve crowding at Elizabeth Lane ES.	August 2022	Complete	32 %	The Lansdowne Elementary School construction manager is nearing completion of the slab on grade sections of the building. As the CMU and structural steel have progressed the in-wall conduits have followed. The site work has continued with installation of the underground storm water detention structure and new utilities to feed the building. The temporary bus lot also had some underground utilities that crossed and the trenches were compacted and patched prior to staff and student occupancy. Occupancy of the replacement school is scheduled for August 2022. Upon completion of the new building, demolition and remaining site work will commence and will be completed in 2023.
Lincoln Heights Elementary School (17)	\$ 4,588,675	Repurpose and reopen as magnet school.	August 2023	Construction Documents	0 %	Shamrock Gardens will be utilizing the Lincoln Heights Elementary building as swing space August 2020 - August 2022. Playgrounds were replaced and new digital signage was installed summer 2020. Based on Board approval in May 2021 the occupancy date has been moved to 2023.
Montclair Elementary School (17)	\$ 28,559,390	New 45-classroom replacement facility replacing school built in 1958.	August 2020	Complete	99 %	This month the construction manager for the Montclair Elementary School completed the final phase of work on the project. The new 45-classroom elementary school building was occupied in August.

# Monthly Project Status

2017 Bond Summary

August 2021

Project	Current Project Estimate	Project Scope	** Occupy On	Design Phase	Construction Progress	Project Status
Mountain Island Lake Academy (17)	\$ 10,488,400	K-8 Phase 2 - New gymnasium and specialty classrooms.	August 2023	Schematic	0 %	The Mountain Island Lake Academy project is in the schematic design phase. This project consists of a building addition containing a middle school gymnasium, visual and performing arts classrooms. To address long lead time concerns the development of an early steel procurement package is in progress. This project is scheduled to start in the spring of 2022 and is scheduled for completion in August 2023.
New Elementary School (Bain, Lebanon, Piney Grove) (17)	\$ 31,455,951	New 45-classroom elementary school; relieves crowding at Bain, Lebanon Road, Piney Grove.	August 2022	Complete	14 %	The New Elementary School (Bain, Lebanon, Piney Grove Relief) under slab plumbing and electrical rough-ins were installed and the first floor slab was completed. This allowed the load bearing masonry and structural steel to progress. The top soil has been spread on areas outside the building and parking footprint. The new front parking lot is on grade and compacted stone set. The underground storm water system is being installed by the grading contractor. This new 45-classroom school will be located next to the existing Mint Hill Middle School. The project is scheduled for occupancy in August 2022.
New Elementary School (Elon, Hawk Ridge, Polo Relief) (17)	\$ 43,476,676	New 45-classroom elementary school to relieve Elon, Hawk Ridge, Polo.	August 2023	Design Development	0 %	The New Elementary School (Elon, Hawk Ridge, Polo Relief) project is in the design development phase. The traffic study scope continues to be development with NCDOT/CDOT; revisions are in progress and will be resubmitted in September. The project's rezoning application/package has been completed and released to the Zoning Department; comments have been received and responses will be returned mid September. To address long lead time concerns the development of an early steel procurement package is in progress. This new 45-classroom school will be located across from the Ardrey Kell High School and is scheduled to start in the spring of 2022 and is scheduled for completion in August 2023.

# Monthly Project Status

2017 Bond Summary

August 2021

Project	Current Project Estimate	Project Scope	** Occupy On	Design Phase	Construction Progress	Project Status
New Elementary School (Hidden Valley, JW Grier, Newell) (17)	\$ 34,697,022	New 45-classroom elementary school; relieves overcrowding at Hidden Valley, J.W. Grier, Newell.	August 2023	Design Development	0 %	The New Elementary School (Hidden Valley, JW Grier, Newell Relief) project has completed of design development documents and the review comments are being incorporated into the construction documents. The traffic analysis study has been submitted to NCDOT and will be complete in September. To address long lead time concerns the development of an early steel procurement package is in progress. This new 45-classroom school will be located next to Northridge Middle School and is scheduled for occupancy in August 2023.
New Elementary School (Windsor, Winterfield, Idlewild Relief) (17)	\$ 37,197,022	New 45-classroom elementary school to relieve Windsor, Winterfield, and Idlewild ES.	August 2023	Design Development	0 %	The New Elementary School (Windsor, Winterfield, Idlewild Relief) project continues to progress in the design development phase. Due diligence deliverables were submitted to the design team for development purposes. The project will require an individual permit from Corps of Engineers. To address long lead time concerns the development of an early steel procurement package is in progress. This new 45-classroom school facility is scheduled for occupancy in August 2023.

# Monthly Project Status

2017 Bond Summary

August 2021

Project	Current Project Estimate	Project Scope	** Occupy On	Design Phase	Construction Progress	Project Status
New High School (17) (Olympic Relief)	\$ 109,908,793	New 100 classroom high school; relieves crowding at Olympic High School.	August 2022	Complete	69 %	The construction manager for the New High School Olympic Relief continued throughout the building with exterior and interior metal studs and drywall installation. The mechanical, electrical and plumbing (MEP) trades continued with above ceiling and in-wall rough in while focusing on work in the mechanical and electrical rooms. Temporary air conditioning units have been installed throughout the facility to allow finish work to begin. Drywall has been installed on multiple floors of the classroom and administration wing. The painter mobilized in the classroom wing following the drywall installation. The pool contractor poured the bottom of the pool. The roofing system was completed on the auditorium building which has allowed progress of the MEP trades in this space. The athletic field contractor mobilized and began the installation of the below grade drainage system and stone base. The contractor continued to be focused on the maintaining the erosion control measures on the site. The 100-classroom relief high school is scheduled to be occupied in August 2022.
New High School (South, Ardrey) (17)	\$ 154,930,460	New 100 classroom high school to relieve South Mecklenburg, Ardrey Kell and Myers Park HS.	August 2024	Construction Documents	0 %	The New High School (South, Ardrey Kell Relief) project has progressed to the construction document phase. The projects rezoning application/package has been completed and released to the Zoning Department; comments have been received and responses will be returned in early September. CDOT's comments on the traffic analysis study have been received and discussions continue with CDOT. Army Corps of Engineers permit package has been submitted for approval. This project consists of a new 100-classroom high school with athletic play fields and stadium.
North Academy of World Languages	\$ 43,359,367	New 66 classroom K-8 Language Immersion facility located on the old J.M. Alexander Middle School site.	August 2021	Complete	99 %	The construction and FF&E for the North Academy of World Languages (fka New K-8 Language Immersion North) was completed. The project closeout and financial reconciliation process with the construction manager is underway. The project was occupied in August.

# Monthly Project Status

2017 Bond Summary

August 2021

Project	Current Project Estimate	Project Scope	** Occupy On	Design Phase	Construction Progress	Project Status
Northwest School of the Arts (17)	\$ 20,467,000	Replace classroom building built in 1952 and build classroom addition that supports program.	August 2024	Not Started	0 %	Project to be funded by the County in FY22, planning underway.
Shamrock Gardens Elementary School (17)	\$ 35,358,351	New 45-classroom replacement facility.	August 2022	Complete	36 %	The Shamrock Gardens Elementary School construction manager continued with activities throughout the building. The structural steel and metal decking is nearing completion on the classroom wing. The MEP trades focused on above ceiling in the kitchen and multipurpose rooms. The mason continued installing the exterior spray foam and brick veneer. The roofing contractor mobilized on site and began installations in the available areas. The site work contractor continued with installation of storm piping and stone base in the parking lots. The new 45-classroom replacement elementary school is scheduled to be occupied August 2022.
Sharon Elementary School (17)	\$ 9,475,862	Add 16 classroom building and increase capacity of cafeteria.	August 2021	Complete	99 %	The construction manager for the Sharon Elementary School Building Addition construction and FF&E was completed. The new building and cafeteria expansion were occupied. The project closeout and final financial reconciliation process with the construction manager is underway. The 16-classroom addition and cafeteria expansion has been occupied.
South Academy of International Languages (fka New K-8 School (South) (17)	\$ 42,959,367	New 71 classroom K-8 Language Immersion facility located on the old Nations Ford Elementary School site.	August 2021	Complete	99 %	The construction manager for the South Academy of International Languages (Fka New K-8 Language Immersion South) worked diligently on the punch list and commissioning items and has the list down to a minimal amount. FF&E was completed and the school was occupied.
South Mecklenburg High School (17)	\$ 15,622,927	Renovate/replace two classroom buildings built in 1958 to upgrade learning conditions.	January 2025	Not Started	0 %	Project to be funded by the County in FY22, planning underway.



# Monthly Project Status

2017 Bond Summary

August 2021

Project	Current Project Estimate	Project Scope	** Occupy On	Design Phase	Construction Progress	Project Status
South Pine Academy	\$ 31,572,550	New 45-classroom elementary school to relieve Nations Ford, Sterling, and Steele Creek.	August 2021	Complete	99 %	The South Pine Academy (fka New Elementary School (Nations, Sterling, Steele Creek Relief) construction manager completed the new building and is working through the commissioning and punch list items. FF&E was completed and the new 45-classroom relief elementary school was occupied in August.
West Charlotte High School (17)	\$ 109,977,166	New 100 classroom school to replace current facility built in 1954.	August 2022	Complete	59 %	The trade contractors continue to work throughout the West Charlotte High School facility. The crews are working from rough-ins to interior finishes. The roof is installed and most windows and openings are sealed as designed. This has allowed finishes to progress including drywall and paint. The mechanical contractor has focused on getting systems operational so temporary conditioned air can be supplied. The site contractor has maintained erosion control and been able to get most of the Phase 1 curb and gutter completed allowing compacted stone to follow. The project team continues to work through supply chain logistics and issues with material availability. The project is scheduled to be occupied August 2022. Once the new school is occupied the existing school will be demolished and final site work will take place with final project completion in August 2023.
West Mecklenburg High School (17)	\$ 10,850,902	Provide new gymnasium, the existing gymnasium will become the auxilliary.	August 2021	Complete	95 %	The West Mecklenburg High School Gym construction manager finalized construction and the building was occupied. The project closeout and financial reconciliation process with the construction manager is underway.

# MONTHLY PROJECT PHOTOS



Briarwood Elementary School Replacement

## PROJECT PROGRESS PHOTOS

---



Briarwood Elementary School Replacement

## PROJECT PROGRESS PHOTOS



Briarwood Elementary School Replacement



## PROJECT PROGRESS PHOTOS



Briarwood Elementary School Replacement



Montclair Elementary School Replacement



## PROJECT PROGRESS PHOTOS

---



Montclaire Elementary School Replacement

## PROJECT PROGRESS PHOTOS

---



North Academy of World Languages  
(fka K-8 Language Immersion North)



## PROJECT PROGRESS PHOTOS

---



North Academy of World Languages  
(fka K-8 Language Immersion North)

## PROJECT PROGRESS PHOTOS

---



North Academy of World Languages  
(fka K-8 Language Immersion North)



## PROJECT PROGRESS PHOTOS



North Academy of World Languages  
(fka K-8 Language Immersion North)

## PROJECT PROGRESS PHOTOS

---



South Academy of International Languages  
(fka K-8 Language Immersion South)



## PROJECT PROGRESS PHOTOS

---



South Academy of International Languages  
(fka K-8 Language Immersion South)

## PROJECT PROGRESS PHOTOS



South Academy of International Languages  
(fka K-8 Language Immersion South)



## PROJECT PROGRESS PHOTOS

---



South Academy of International Languages  
(fka K-8 Language Immersion South)

## PROJECT PROGRESS PHOTOS

---



New High School Olympic Relief



## PROJECT PROGRESS PHOTOS

---



New High School Olympic Relief

## PROJECT PROGRESS PHOTOS

---



New High School Olympic Relief



## PROJECT PROGRESS PHOTOS

---



New High School Olympic Relief

## PROJECT PROGRESS PHOTOS

---



New High School Olympic Relief



## PROJECT PROGRESS PHOTOS

---



West Charlotte High School Replacement



## PROJECT PROGRESS PHOTOS

---



West Charlotte High School Replacement



## PROJECT PROGRESS PHOTOS

---



West Charlotte High School Replacement

## PROJECT PROGRESS PHOTOS



West Charlotte High School Replacement



## PROJECT PROGRESS PHOTOS



**RODGERS**  **HOLT BROTHERS**  
CONSTRUCTION

CMS - West Charlotte High School  
Charlotte, NC  
August 24, 2021

West Charlotte High School Replacement

## PROJECT PROGRESS PHOTOS



South Pine Academy  
(fka New ES Nations Ford, Sterling, Steele Creek)



## PROJECT PROGRESS PHOTOS

---



**South Pine Academy**  
(fka New ES Nations Ford, Sterling, Steele Creek)

## PROJECT PROGRESS PHOTOS



**South Pine Academy**  
(fka New ES Nations Ford, Sterling, Steele Creek)



## PROJECT PROGRESS PHOTOS



**South Pine Academy**  
(fka New ES Nations Ford, Sterling, Steele Creek)



Sharon Elementary School Addition



## PROJECT PROGRESS PHOTOS

---



Sharon Elementary School Addition

## PROJECT PROGRESS PHOTOS

---



Sharon Elementary School Addition



## PROJECT PROGRESS PHOTOS

---



West Mecklenburg High School Gym

## PROJECT PROGRESS PHOTOS

---



West Mecklenburg High School Gym



## PROJECT PROGRESS PHOTOS

---



West Mecklenburg High School Gym

## PROJECT PROGRESS PHOTOS

---



Shamrock Gardens Elementary School



## PROJECT PROGRESS PHOTOS

---



Shamrock Gardens Elementary School



## PROJECT PROGRESS PHOTOS

---



Shamrock Gardens Elementary School

## PROJECT PROGRESS PHOTOS

---



Shamrock Gardens Elementary School





Lansdowne Elementary School  
Shamrock Gardens Elementary School

## PROJECT PROGRESS PHOTOS

---



Lansdowne Elementary School



## PROJECT PROGRESS PHOTOS

---



Lansdowne Elementary School





Lansdowne Elementary School

## PROJECT PROGRESS PHOTOS

---



East Mecklenburg High School



## PROJECT PROGRESS PHOTOS

---



East Mecklenburg High School

## PROJECT PROGRESS PHOTOS

---



East Mecklenburg High School



## PROJECT PROGRESS PHOTOS

---



New ES (Bain, Lebanon, Piney Grove Relief)

## PROJECT PROGRESS PHOTOS

---



New ES (Bain, Lebanon, Piney Grove Relief)



## PROJECT PROGRESS PHOTOS

---



New ES (Bain, Lebanon, Piney Grove Relief)

# MWSBE PARTICIPATION REPORT



# Contract Status Report - MWSBE Participation Commitments

Report Date 9/8/2021

Charlotte-Mecklenburg Schools

9/8/2021 4:53:50 PM

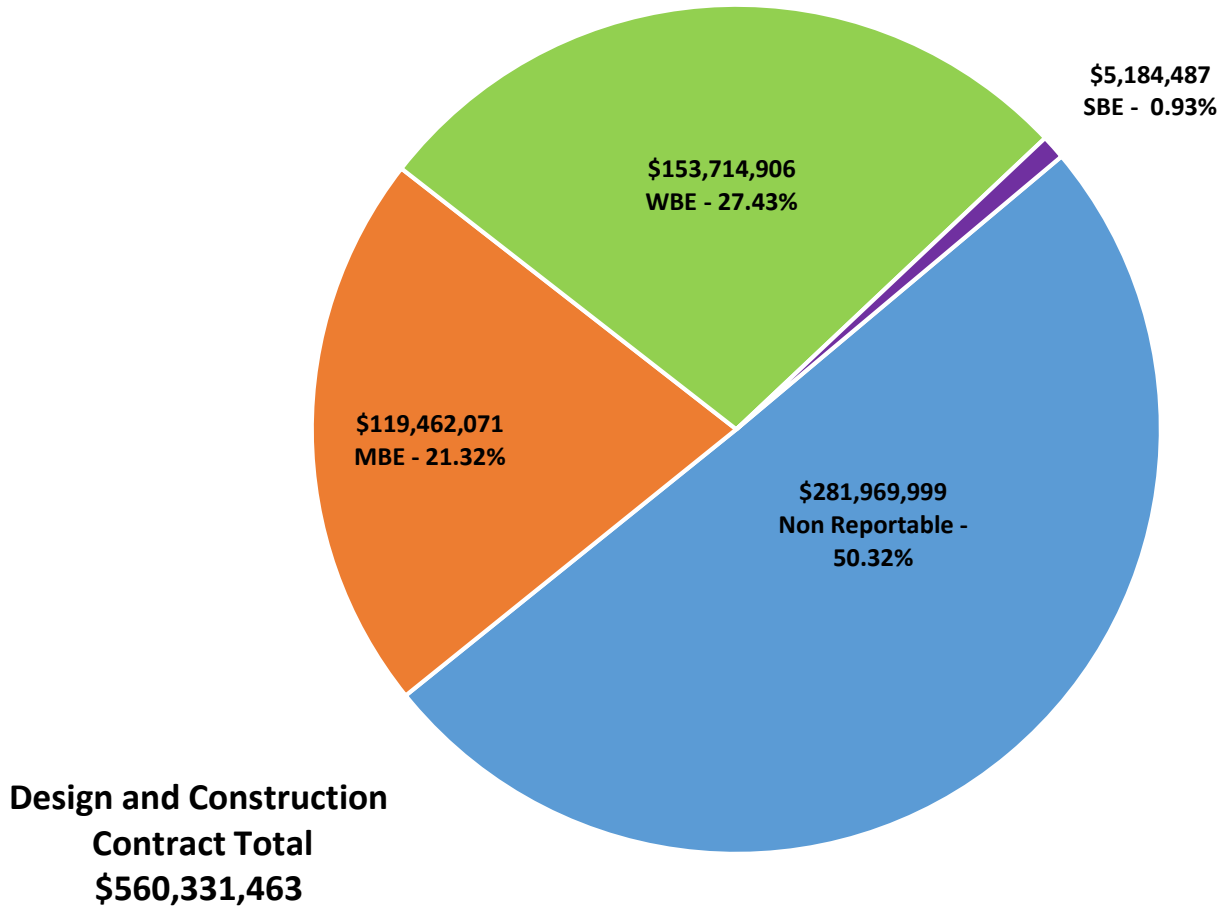
2017 Bond Projects

August 2021 Monthly Bond Report

Facility	Contract Amount	African American MBE\$	%	Other MBE \$	%	Total MBE \$	%	Other WBE \$	%	Other SBE \$	%	Total	%
<u>Briarwood Elementary School (17)</u>	\$28,696,836	\$4,011,116	13.98%	\$2,424,277	8.45%	\$6,435,393	22.43%	\$1,878,126	6.54%	\$152,902	0.53%	\$8,466,421	29.50%
<u>Career and Technology Education (17)</u>	\$5,909,090	\$666,147	11.27%	\$336,382	5.69%	\$1,002,529	16.97%	\$214,326	3.63%	\$35,485	0.60%	\$1,252,340	21.19%
<u>Charlotte-Mecklenburg Academy (17)</u>	\$17,035,852	\$198,536	1.17%	\$1,029,192	6.04%	\$1,227,728	7.21%	\$872,755	5.12%	\$13,200	0.08%	\$2,113,683	12.41%
<u>Collinswood Language Academy (17)</u>	\$38,551,189	\$649,287	1.68%	\$1,613,103	4.18%	\$2,262,390	5.87%	\$11,362,566	29.47%	\$9,328	0.02%	\$13,634,284	35.37%
<u>E.E. Waddell (17)</u>	\$152,000	\$0	0.00%	\$0	0.00%	\$0	0.00%	\$10,950	7.20%	\$0	0.00%	\$10,950	7.20%
<u>East Mecklenburg High School (17)</u>	\$12,495,074	\$627,648	5.02%	\$535,415	4.29%	\$1,163,063	9.31%	\$490,382	3.92%	\$681,075	5.45%	\$2,334,521	18.68%
<u>Garinger High School (17)</u>	\$4,212,784	\$49,330	1.17%	\$412,572	9.79%	\$461,902	10.96%	\$165,433	3.93%	\$0	0.00%	\$627,335	14.89%
<u>Harding High School (17)</u>	\$13,005,626	\$1,504,505	11.57%	\$310,356	2.39%	\$1,814,862	13.95%	\$3,846,831	29.58%	\$176	0.00%	\$5,661,869	43.53%
<u>JT Williams (17)</u>	\$1,180,500	\$2,000	0.17%	\$20,000	1.69%	\$22,000	1.86%	\$0	0.00%	\$0	0.00%	\$22,000	1.86%
<u>Lansdowne Elementary School (17)</u>	\$30,617,679	\$33,367	0.11%	\$142,400	0.47%	\$175,767	0.57%	\$213,811	0.70%	\$223,625	0.73%	\$613,203	2.00%
<u>Lincoln Heights Elementary School (17)</u>	\$432,426	\$92,274	21.34%	\$18,800	4.35%	\$111,074	25.69%	\$0	0.00%	\$74,503	17.23%	\$185,577	42.92%
<u>Montclair Elementary School (17)</u>	\$26,201,789	\$3,617,952	13.81%	\$2,260,381	8.63%	\$5,878,333	22.43%	\$5,729,641	21.87%	\$518,632	1.98%	\$12,126,605	46.28%
<u>Mountain Island Lake Academy (17)</u>	\$828,815	\$0	0.00%	\$36,650	4.42%	\$36,650	4.42%	\$19,550	2.36%	\$0	0.00%	\$56,200	6.78%
<u>New Elementary School (Bain, Leban)</u>	\$26,301,565	\$4,421,430	16.81%	\$19,078,950	72.54%	\$23,500,380	89.35%	\$1,233,970	4.69%	\$309,180	1.18%	\$25,043,530	95.22%
<u>New Elementary School (Elon, Hawk)</u>	\$1,954,005	\$0	0.00%	\$0	0.00%	\$0	0.00%	\$60,490	3.10%	\$0	0.00%	\$60,490	3.10%
<u>New Elementary School (Hidden Vall)</u>	\$2,050,323	\$0	0.00%	\$99,674	4.86%	\$99,674	4.86%	\$21,500	1.05%	\$25,600	1.25%	\$146,774	7.16%
<u>New Elementary School (Windsor, W)</u>	\$2,058,270	\$1,456,670	70.77%	\$258,000	12.53%	\$1,714,670	83.31%	\$165,750	8.05%	\$0	0.00%	\$1,880,420	91.36%
<u>New High School (17) (Olympic Relief)</u>	\$98,154,986	\$13,312,696	13.56%	\$5,874,324	5.98%	\$19,187,020	19.55%	\$8,458,793	8.62%	\$766,550	0.78%	\$28,412,363	28.95%
<u>New High School (South, Ardrey) (17)</u>	\$6,555,075	\$13,500	0.21%	\$91,000	1.39%	\$104,500	1.59%	\$507,465	7.74%	\$27,500	0.42%	\$639,465	9.76%
<u>North Academy of World Languages</u>	\$38,325,191	\$1,964,711	5.13%	\$1,909,480	4.98%	\$3,874,191	10.11%	\$4,583,546	11.96%	\$420,199	1.10%	\$8,877,936	23.16%
<u>Northwest School of the Arts (17)</u>	\$115,000	\$0	0.00%	\$0	0.00%	\$0	0.00%	\$0	0.00%	\$0	0.00%	\$0	0.00%
<u>Shamrock Gardens Elementary Scho</u>	\$27,979,335	\$1,997,614	7.14%	\$1,468,047	5.25%	\$3,465,661	12.39%	\$22,870,938	81.74%	\$275,594	0.98%	\$26,612,193	95.11%
<u>Sharon Elementary School (17)</u>	\$8,506,756	\$279,813	3.29%	\$338,766	3.98%	\$618,579	7.27%	\$1,333,460	15.68%	\$212,624	2.50%	\$2,164,664	25.45%
<u>South Academy of International Lang</u>	\$37,685,622	\$6,023,141	15.98%	\$2,431,071	6.45%	\$8,454,212	22.43%	\$10,755,611	28.54%	\$347,799	0.92%	\$19,557,622	51.90%

Facility	Contract Amount	African American MBE\$	%	Other MBE \$	%	Total MBE \$	%	Other WBE \$	%	Other SBE \$	%	Total	%
<u>South Pine Academy</u>	\$26,415,366	\$916,165	3.47%	\$19,416,086	73.50%	\$20,332,251	76.97%	\$4,341,881	16.44%	\$238,129	0.90%	\$24,912,261	94.31%
<u>West Charlotte High School (17)</u>	\$94,957,318	\$15,116,534	15.92%	\$1,519,700	1.60%	\$16,636,234	17.52%	\$72,580,016	76.43%	\$562,104	0.59%	\$89,778,354	94.55%
<u>West Mecklenburg High School (17)</u>	\$9,952,990	\$393,254	3.95%	\$489,754	4.92%	\$883,008	8.87%	\$1,997,115	20.07%	\$290,283	2.92%	\$3,170,406	31.85%
<b>Grandtotal</b>	\$560,331,463	\$57,347,691	10.23%	\$62,114,380	11.09%	\$119,462,071	21.32%	\$153,714,906	27.43%	\$5,184,487	0.93%	\$278,361,464	49.68%

## MWSBE Participation 2017 Bond Projects





# PROJECT CONTROLS

CHARLOTTE-MECKLENBURG BOARD OF EDUCATION  
2013 BOND SERIES-CAPITAL IMPROVEMENT PROGRAM  
BUDGET STATUS REPORT

	Original Project Budget	Current Project Budget	Committed Amount	Approved Change Orders	Total Committed	Pending Commitments	To Be Committed	Prev Paid To Date	Paid To Date	Balance To Complete	Monthly Expenditure
	(A)	(B)	(C)	(D)	(E)=C+D	(F)	(G)=(B-E-F)	(H)	(I)	(J)=(B-I)	(K)=(I-H)
<b><u>A. REPLACEMENT &amp; RENOVATIONS</u></b>											
1 Career & Technology Education Institutes Phase 1:	\$8,640,000	\$18,256,861	\$7,064,749	\$11,192,112	\$18,256,861	\$0	\$0	\$7,345,753	\$7,348,613	\$10,908,248	\$2,860
2 Davidson K-8 Conversion	\$9,500,000	\$13,610,000	\$2,130,689	\$11,364,591	\$13,495,280	\$0	\$114,720	\$13,460,403	\$13,460,953	\$149,047	\$550
3 J.M. Alexander Middle Replacement	\$30,672,000	\$29,845,539	\$4,502,518	\$25,343,021	\$29,845,539	\$0	\$0	\$29,845,539	\$29,845,539	\$0	\$0
4 Nations Ford Elementary Replacement	\$19,440,000	\$19,231,603	\$3,958,869	\$15,272,733	\$19,231,603	\$0	\$0	\$19,231,604	\$19,231,604	\$0	\$0
5 Northwest School of the Arts	\$12,420,000	\$12,868,718	\$2,047,917	\$10,820,801	\$12,868,718	\$0	\$0	\$12,868,719	\$12,868,719	\$0	\$0
6 Oakhurst STEAM Magnet Elementary/Starmount	\$5,940,000	\$5,407,812	\$3,471,397	\$1,936,415	\$5,407,812	\$0	\$0	\$5,407,812	\$5,407,812	\$0	\$0
7 Pre-K-8 Conversions Phase II: Ashley Park/ Bruns	\$24,732,000	\$19,791,457	\$4,167,669	\$15,563,538	\$19,731,207	\$0	\$60,250	\$19,700,807	\$19,700,807	\$90,650	\$0
8 Selwyn Elementary	\$2,592,000	\$4,687,004	\$744,378	\$3,881,906	\$4,626,284	\$0	\$60,720	\$4,624,831	\$4,624,831	\$62,172	\$0
9 Statesville Road Elementary	\$20,340,000	\$20,648,510	\$5,081,473	\$15,567,037	\$20,648,509	\$0	\$0	\$20,648,509	\$20,648,509	\$0	\$0
<b>Total Replacement &amp; Renovations</b>	<b>\$134,276,000</b>	<b>\$144,347,503</b>	<b>\$33,169,659</b>	<b>\$110,942,154</b>	<b>\$144,111,813</b>	<b>\$0</b>	<b>\$235,690</b>	<b>\$133,133,977</b>	<b>\$133,137,387</b>	<b>\$11,210,116</b>	<b>\$3,410</b>
<b><u>B. RESPONSE TO ENROLLMENT GROWTH</u></b>											
1 East Mecklenburg High Addition	\$12,744,000	\$10,988,287	\$3,369,684	\$7,618,603	\$10,988,287	\$0	\$0	\$10,988,287	\$10,988,287	\$0	\$0
2 Myers Park High Addition	\$22,248,000	\$11,070,580	\$1,207,493	\$9,833,448	\$11,040,942	\$0	\$29,639	\$11,040,941	\$11,040,941	\$29,639	\$0
3 Northridge Middle Addition	\$6,448,000	\$6,366,170	\$2,114,306	\$4,251,865	\$6,366,171	\$0	\$0	\$6,366,171	\$6,366,171	\$0	\$0
4 Olympic High Addition/Renovation	\$8,964,000	\$8,947,310	\$2,002,694	\$6,944,615	\$8,947,310	\$0	\$0	\$8,947,310	\$8,947,310	\$0	\$0
5 South Mecklenburg High Addition	\$18,360,000	\$16,307,355	\$2,922,282	\$13,385,073	\$16,307,355	\$0	\$0	\$16,307,355	\$16,307,355	\$0	\$0
6 Charlotte East Language Academy (FKA -New Lang	\$30,376,000	\$31,456,414	\$5,740,242	\$25,692,685	\$31,432,927	\$0	\$23,487	\$31,387,929	\$31,387,929	\$68,485	\$0
7 Rea Farms STEAM Academy	\$31,376,000	\$40,476,000	\$9,134,265	\$30,191,983	\$39,326,248	\$0	\$1,149,752	\$38,178,645	\$38,182,078	\$2,293,922	\$3,433
8 Renaissance West STEAM Academy (FKA New Pre-	\$30,376,000	\$31,740,150	\$5,667,328	\$26,072,822	\$31,740,150	\$0	\$0	\$31,698,952	\$31,698,952	\$41,199	\$0
<b>Total Response to Enrollment Growth</b>	<b>\$160,892,000</b>	<b>\$157,352,267</b>	<b>\$32,158,295</b>	<b>\$123,991,095</b>	<b>\$156,149,389</b>	<b>\$0</b>	<b>\$1,202,878</b>	<b>\$154,915,589</b>	<b>\$154,919,023</b>	<b>\$2,433,244</b>	<b>\$3,433</b>
<b><u>C. CONTINGENCY</u></b>											
	\$0	\$0	\$0	\$0	\$0	\$0	\$0	\$0	\$0	\$0	\$0
<b>Total Contingency</b>	<b>\$0</b>	<b>\$0</b>	<b>\$0</b>	<b>\$0</b>	<b>\$0</b>	<b>\$0</b>	<b>\$0</b>	<b>\$0</b>	<b>\$0</b>	<b>\$0</b>	<b>\$0</b>
<b>TOTAL LOCAL BOND PROGRAM</b>	<b>\$295,168,000</b>	<b>\$301,699,771</b>	<b>\$65,327,954</b>	<b>\$234,933,249</b>	<b>\$300,261,202</b>	<b>\$0</b>	<b>\$1,438,568</b>	<b>\$288,049,566</b>	<b>\$288,056,410</b>	<b>\$13,643,361</b>	<b>\$6,843</b>

Original project estimated costs approved by the Board Of Education on July 23, 2013 and approved by the voters of Mecklenburg County on November 5, 2013.

Note: Mecklenburg County's appropriated interest from COPS to increase funding for the 2013 Bond Program.

CHARLOTTE-MECKLENBURG BOARD OF EDUCATION  
2017 BOND SERIES-CAPITAL IMPROVEMENT PROGRAM  
BUDGET STATUS REPORT

	Original Project Budget	Current Project Budget	Committed Amount	Approved Change Orders	Total Committed	Pending Commitments	To Be Committed	Prev Paid To Date	Paid To Date	Balance To Complete	Monthly Expenditure
	(A)	(B)	(C)	(D)	(E)=C+D	(F)	(G)=(B-E-F)	(H)	(I)	(J)=(B-I)	(K)=(I-H)
<b><u>A. REPLACEMENT &amp; RENOVATIONS</u></b>											
1 Briarwood Elementary *	\$29,091,619	\$31,962,730	\$4,943,838	\$26,609,642	\$31,553,480	\$64,249	\$345,001	\$23,912,597	\$25,460,830	\$6,501,900	\$1,548,233
2 Bruns Academy Replacement	\$34,207,808	\$39,784,927	\$1,433,024	\$218,050	\$1,651,074	\$0	\$38,133,853	\$0	\$0	\$39,784,927	\$0
3 Career & Technology Education Upgrades	\$10,101,734	\$10,159,765	\$2,319,073	\$4,093,502	\$6,412,575	\$0	\$3,747,190	\$1,242,408	\$2,134,414	\$8,025,351	\$892,006
4 Collinswood K-8 *	\$44,172,540	\$42,272,540	\$5,010,866	\$36,706,773	\$41,717,639	\$0	\$554,901	\$41,374,986	\$41,375,536	\$897,004	\$550
5 East Mecklenburg HS	\$12,771,594	\$15,058,594	\$1,790,112	\$11,387,595	\$13,177,707	(\$6,960)	\$1,887,847	\$2,952,507	\$3,490,432	\$11,568,162	\$537,925
6 Garinger HS	\$13,936,979	\$14,486,979	\$1,490,411	\$3,475,359	\$4,965,770	\$0	\$9,521,209	\$197,682	\$230,136	\$14,256,843	\$32,454
7 Harding University High *	\$18,330,263	\$14,530,263	\$2,047,347	\$11,712,323	\$13,759,670	\$47,000	\$723,593	\$13,532,916	\$13,532,916	\$997,347	\$0
8 Charlotte-Mecklenburg Academy (FKA -EC Specialty	\$18,957,960	\$18,079,506	\$2,175,504	\$15,790,598	\$17,966,102	\$0	\$113,404	\$17,699,220	\$17,699,220	\$380,286	\$0
9 Lansdowne Elementary	\$29,391,270	\$37,128,834	\$4,139,060	\$28,400,521	\$32,539,581	\$0	\$4,589,253	\$7,671,571	\$9,857,872	\$27,270,962	\$2,186,302
10 Lincoln Heights Elementary	\$3,740,478	\$4,588,675	\$577,649	\$26,774	\$604,423	\$0	\$3,984,252	\$383,738	\$383,738	\$4,204,937	\$0
11 Montclair Elementary Replacement *	\$28,559,390	\$28,559,390	\$2,426,403	\$26,056,957	\$28,483,359	\$0	\$76,031	\$27,467,877	\$27,841,640	\$717,750	\$373,763
12 Mountain Island k-8	\$9,218,439	\$10,488,400	\$1,204,450	\$6,930	\$1,211,380	\$0	\$9,277,020	\$0	\$30,950	\$10,457,450	\$30,950
13 Northwest School of the Arts	\$17,632,202	\$20,467,000	\$846,736	\$117,644	\$964,380	\$0	\$19,502,620	\$0	\$0	\$20,467,000	\$0
14 Shamrock Gardens Elementary *	\$29,890,351	\$35,358,351	\$3,666,919	\$26,053,763	\$29,720,682	\$20,644	\$5,617,025	\$8,506,026	\$8,543,795	\$26,814,556	\$37,769
15 Sharon Elementary	\$7,706,528	\$9,475,862	\$1,443,396	\$7,659,186	\$9,102,582	\$60,840	\$312,440	\$8,281,401	\$8,553,282	\$922,580	\$271,880
16 South Mecklenburg HS	\$13,352,143	\$15,622,927	\$554,114	\$94,238	\$648,352	\$0	\$14,974,575	\$2,362	\$2,362	\$15,620,565	\$0
17 E.E. Waddell Magnet HS	\$4,571,709	\$5,137,367	\$347,531	\$0	\$347,531	\$0	\$4,789,836	\$39,575	\$70,966	\$5,066,401	\$31,391
18 West Charlotte HS Replacement	\$109,977,166	\$109,977,166	\$11,901,575	\$88,181,557	\$100,083,132	\$152,905	\$9,741,129	\$50,912,578	\$54,534,057	\$55,443,109	\$3,621,479
19 West Mecklenburg HS	\$11,065,440	\$10,850,902	\$1,659,883	\$8,814,308	\$10,474,191	\$26,292	\$350,419	\$8,717,987	\$9,004,719	\$1,846,183	\$286,732
20 John Taylor Williams	\$13,964,339	\$15,732,600	\$1,760,020	\$0	\$1,760,020	\$0	\$13,972,580	\$0	\$0	\$15,732,600	\$0
<b>Total Replacement &amp; Renovations</b>	<b>\$460,639,952</b>	<b>\$489,722,778</b>	<b>\$51,737,911</b>	<b>\$295,405,719</b>	<b>\$347,143,630</b>	<b>\$364,970</b>	<b>\$142,214,178</b>	<b>\$212,895,431</b>	<b>\$222,746,863</b>	<b>\$266,975,915</b>	<b>\$9,851,432</b>
<b><u>B. RESPONSE TO ENROLLMENT GROWTH</u></b>											
1 South Academy of International Languages	\$45,359,367	\$42,959,367	\$6,011,898	\$35,673,741	\$41,685,639	\$0	\$1,273,728	\$38,918,575	\$39,309,603	\$3,649,764	\$391,029
2 North Academy of World Languages (FKA - New K-8	\$45,359,367	\$43,359,367	\$6,278,171	\$35,972,805	\$42,250,976	\$761	\$1,107,630	\$39,889,211	\$40,730,166	\$2,629,201	\$840,955
3 South Pine Academy (FKA - New ES Nations Ford, S	\$29,173,829	\$31,572,550	\$6,782,027	\$24,425,881	\$31,207,908	\$0	\$364,641	\$26,070,970	\$26,781,452	\$4,791,098	\$710,482
4 New Elementary School - Bain/Lebanon Relief	\$29,988,332	\$31,455,951	\$3,382,255	\$24,530,000	\$27,912,255	\$0	\$3,543,696	\$2,898,574	\$4,305,009	\$27,150,942	\$1,406,435
5 New Elementary School - Windsor Park Relief *	\$30,422,230	\$37,197,022	\$3,326,793	\$177,404	\$3,504,197	\$0	\$33,692,825	\$314,736	\$426,352	\$36,770,671	\$111,616
6 New Elementary School - Elon/Hawk Ridge Relief *	\$30,426,712	\$43,476,676	\$13,989,721	\$47,300	\$14,037,021	\$0	\$29,439,654	\$11,208,453	\$11,333,221	\$32,143,455	\$124,768
7 New Elementary School - Hidden Valley Relief	\$30,518,345	\$34,697,022	\$4,127,852	\$241,875	\$4,369,727	\$0	\$30,327,295	\$1,476,728	\$1,504,519	\$33,192,503	\$27,791
8 New High School - Olympic Relief	\$109,908,793	\$109,908,793	\$11,325,888	\$91,828,509	\$103,154,397	\$143,164	\$6,605,232	\$55,685,494	\$60,146,319	\$49,762,474	\$4,460,825
9 New High School - South Meck/Ardrey Kell Relief *	\$110,287,621	\$154,930,460	\$11,233,685	\$711,379	\$11,945,064	\$0	\$142,985,396	\$3,021,055	\$3,634,807	\$151,295,653	\$613,752
<b>Total Response to Enrollment Growth</b>	<b>\$461,444,596</b>	<b>\$529,557,208</b>	<b>\$66,458,292</b>	<b>\$213,608,894</b>	<b>\$280,067,185</b>	<b>\$143,925</b>	<b>\$249,340,097</b>	<b>\$179,483,797</b>	<b>\$188,171,448</b>	<b>\$341,385,759</b>	<b>\$8,687,652</b>
<b><u>C. CONTINGENCY</u></b>											
	\$0	\$0	\$0	\$0	\$0	\$0	\$0	\$0	\$0	\$0	\$0
<b>Total Contingency</b>	<b>\$0</b>	<b>\$0</b>	<b>\$0</b>	<b>\$0</b>	<b>\$0</b>	<b>\$0</b>	<b>\$0</b>	<b>\$0</b>	<b>\$0</b>	<b>\$0</b>	<b>\$0</b>



CHARLOTTE-MECKLENBURG BOARD OF EDUCATION  
2017 BOND SERIES-CAPITAL IMPROVEMENT PROGRAM  
BUDGET STATUS REPORT

	Original Project Budget	Current Project Budget	Committed Amount	Approved Change Orders	Total Committed	Pending Commitments	To Be Committed	Prev Paid To Date	Paid To Date	Balance To Complete	Monthly Expenditure
	(A)	(B)	(C)	(D)	(E)=C+D	(F)	(G)=(B-E-F)	(H)	(I)	(J)=(B-I)	(K)=(I-H)
TOTAL LOCAL BOND PROGRAM	\$922,084,548	\$1,019,279,985	\$118,196,203	\$509,014,613	\$627,210,815	\$508,895	\$391,554,275	\$392,379,228	\$410,918,311	\$608,361,674	\$18,539,083

Original project estimated costs approved by the Board Of Education on July 25, 2017 approved by the voters of Mecklenburg County on November 7, 2017.

\*Project included in \$33.2M early funding approved by Board Of Education on August 9, 2016 and Mecklenburg Board of County Commissioners on September 6, 2016. On February 19, 2019 an additional \$8M was approved for New Elementary School - Elon/Hawk Ridge Relief site.

\*Current Budget includes an additional \$89.2M to fund increase land and construction costs. The additional funds were approved by the Board of County Commissioners on June 16, 2020.

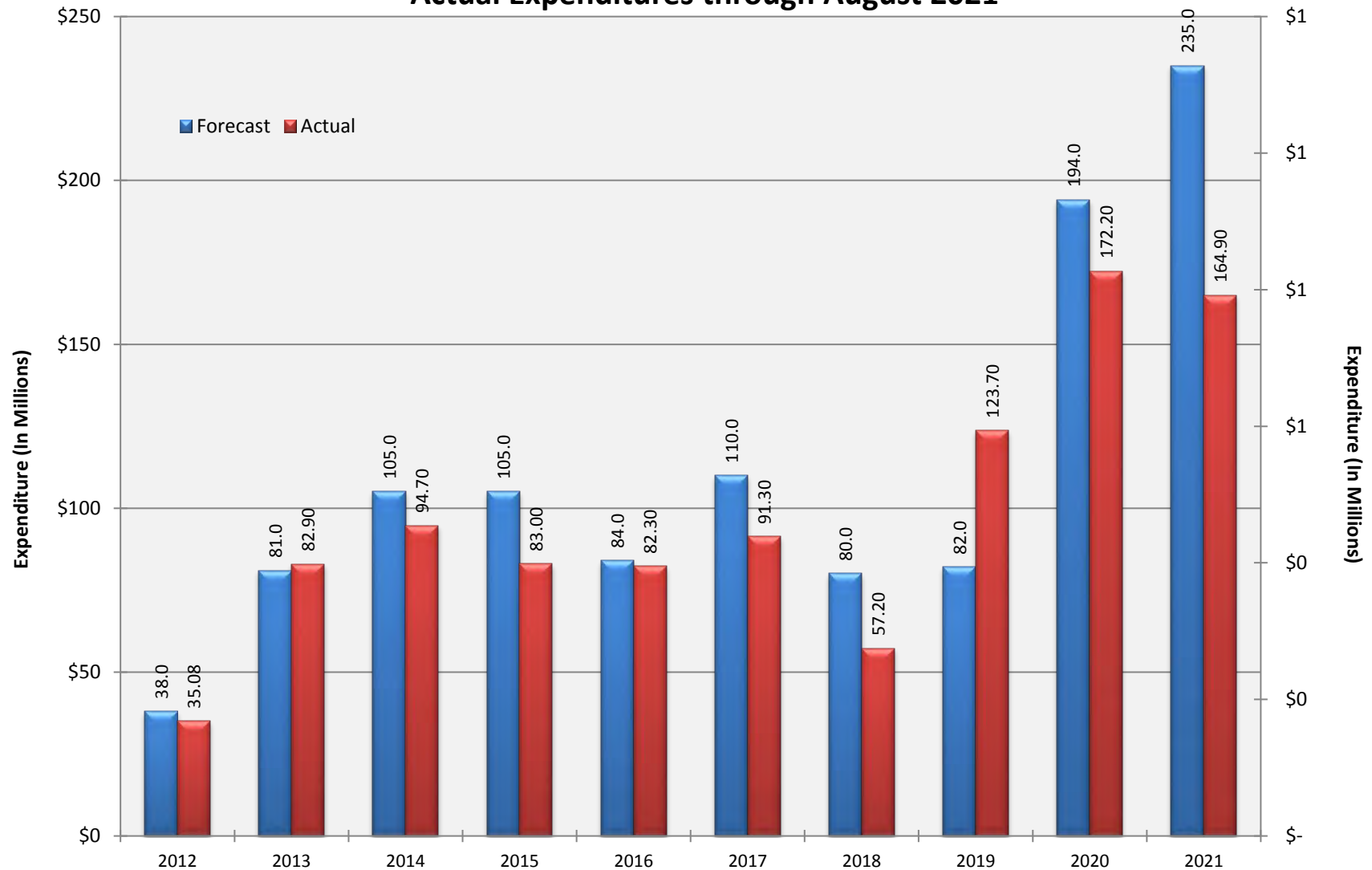
Charlotte-Mecklenburg Board of Education  
Approved Construction or Repair Change Orders\*  
Reporting Period: August 2021

Funding Source	Project Name	Contractor	Description	Change Order Amount	Revised Contract Value
	None this reporting period				

\* Not previously presented to the Board of Education for Approval (less than \$90,000)

# 10 YEAR EXPENDITURE SUMMARY

**Forecast Expenditure versus  
Actual Expenditures through August 2021**





# GLOSSARY

# Glossary

---

- **Project Management** – This section includes updates from our project managers and describes the currently active construction projects. This includes from Board of Education award thru final completion.
- **Design and Bidding** – This section contains updates from our design managers on the projects currently in the design phase. This phase from design award to Board of Education award of construction.
- **Controls** – Section includes misc. updates from controls group including expenditures, related Board of Education awards during the reporting period, cash flow information. This section covers all projects from approved bond through final expenditures and bond close with the county.
- **MWSBE** – Contains updates from the MWSBE Director and team, including current activity and summaries of the participation by MWSBE providers on our program.
- **Bond Progress Summary** – Provides a summary of bond financials including bond value, committed/pending amounts, paid to date, expended this month.
- **Project Procurement Dates** - Next 90 Days major project bid activity.
- **Mobile Swing Space Utilization** – Includes a summary of program related swing space currently in use and the schedule of use.
- **Bond Summary Schedule** – Current program summary schedule including planned design, construction and FF&E. These activities are fed from detailed schedules and are fine-tuned as project information is available.
- **Project Contractor Teams**; Provides summary of turnover dates for completed/closed projects since 2010 including architects/designers and contractors.
- **School Site Location Maps** – General location of bond projects (2017) by type.
- **Project Status Report** – This section of the report provides a summary of the bond project scope, current estimate (all sources), planned occupancy/actual occupancy date. It also provides a current status of the design phase, construction progress and a brief update. The report currently includes 2013 and 2017 bond projects that have or will be completed after to August 2016.
- **MWSBE Participation Report** – The MWSBE report provides a summary of the participation on the 2013 & 2017 Bond funded projects.
- **Project Progress Photos** – Includes photos of active construction projects.
- **Budget Summary Reports** – These reports are by funding source and summarize financial activity to date on the projects. This includes original and current project estimates, committed values, amounts paid to date, balances and monthly expenditures.
- **Change Orders < \$90,000** – This month's approved construction or repair change orders < \$90,000.
- **Expenditure Summary** – Provides a summary of Bond Expenditures by calendar year.