

Capital Improvement Program

Monthly Bond Report July 2021



South Academy of International Languages



CAPITAL PROGRAM SERVICES Capital Improvement Program

JULY 2021 **MONTHLY BOND REPORT**

PROGRAM OVERVIEW

- Project Management
- Design and Bidding
- Controls
- MWSBE
- Bond Progress Summary
- Project Procurement - Next 90 Days
- Swing Space Utilization
- Bond Summary Schedule
- Project Contractor Teams; Projects in Design/Construction and Substantially Completed/Closed
- School Site Location Maps
 - Elementary Schools
 - Middle Schools
 - High Schools & Specialty Schools

PROJECT STATUS REPORT

MWSBE PARTICIPATION REPORT

PROJECT PROGRESS PHOTOS

PROJECT CONTROLS

- Budget Summary Reports
 - 2013 Bond Series
 - 2017 Bond Series
- Change Orders < \$90,000
- Expenditure Summary

GLOSSARY

PROGRAM OVERVIEW

PROJECT MANAGEMENT

The following is a summary of the activity on the bond funded projects in construction during the month of July.

The construction manager for the **Briarwood Elementary Replacement School** completed the construction of the new building in late July. The team has been focused on completing the punch list and commission items prior to occupancy by the staff. The temporary construction fence has been installed to maintain separation between the new building and the old to prepare for demolition. FF&E installations are scheduled to begin the first week of August. The 45-classroom replacement school will be ready to be occupied in August. Upon completion, demolition and remaining site work will commence and be completed in 2022.

The **CTE projects** at **Harding, South Mecklenburg** and **Olympic** are nearing completion of selective demolition. Interior metal stud framed walls are progressing allowing in wall rough-ins to follow. The underground rough-ins for plumbing and electrical have also progressed where floor slabs were removed. The project team is working through supply chain logistics and issues with material availability. In some cases, product substitutions are being considered to maintain overall construction schedule. Harding and South Mecklenburg have new bathrooms that are focus points for the summer to provide use in late August. The Harding project consists of renovations to existing classrooms in the auditorium building to develop a suite of technology classrooms. The project at Olympic includes electrical up fits to the existing carpentry lab which expands the curriculum to include demonstration learning booths for plumbing and electrical trades. The project at South Mecklenburg consists of renovating the old kitchen area into a culinary arts lab and classroom. Occupancy for Olympic is scheduled August 2021. Harding and South Mecklenburg are scheduled for completion in January 2022.

The construction manager for **East Mecklenburg High School** has completed pouring floor slabs up to the point where it is impacted by existing Duke Energy primary underground power lines. The existing primary power line feeding the 500 Building is scheduled to be relocated but delays with Duke Energy continue to impact the schedule, once the line is relocated work in the area will commence. The water line to feed the new building has been installed to Monroe Road. The project team is working through supply chain logistics and issues with material availability. In some cases, product substitutions are being considered to maintain overall construction schedule. The new classroom wing is scheduled for occupancy in August 2022.

The **Garinger Addition and Renovation** construction manager mobilized and installed the construction fence, construction trailer and began grading operations. The addition is scheduled to be occupied August of 2022 and the renovation to be occupied in January of 2023.

The **Lansdowne Elementary School** construction manager continues to dig and pour perimeter building footings. They will be pouring the slab on grade in phases as underground electrical and plumbing rough-ins are completed. The building has now started vertical construction with load bearing masonry and structural steel framing. The underground storm water detention pipes have been delivered and installation is ongoing. The project team continues to work through supply chain issues with material availability. The existing school sanitary sewer lines have been rerouted around the current construction area. Occupancy of the replacement school is scheduled for August 2022. Upon completion of the new building, demolition and remaining site work will commence and will be completed in 2023.

The construction manager for the **Montclair Elementary School** completed the conversion of the temporary ponds to the permanent sand filters. They continued with the maintenance of the newly installed grassed areas and dressed the site for the upcoming school year. The new 45-classroom elementary school building has been occupied. The remaining site work is being finalized.

The **New Elementary School (Bain, Lebanon, Piney Grove Relief)** under slab plumbing and electrical rough-ins were installed and the first floor slab has been completed. The grading contractor is also working on the front parking lot which will also be used for construction parking during this phase of the project. This new 45-classroom school will be located next to the existing Mint Hill Middle School. The project is scheduled for occupancy in August 2022.

The construction manager for the **New High School Olympic Relief** continued with exterior and interior metal studs and drywall installations. The mechanical, electrical and plumbing trades continued with above ceiling and in wall roughs in while focusing on work in the mechanical and electrical rooms. The pool contractor completed excavation of the pool and the underground plumbing and electrical. Site work continued on the athletic fields and erosion control throughout the site. The 100-classroom relief high school is scheduled to be occupied in August 2022.

The **North Academy of World Languages** (*fka New K-8 Language Immersion North*) project FF&E is nearing completion and the Principal and staff have moved into the new facility. The architect's punch list has been finalized and most issues have been completed. The Hambright Road improvements are complete allowing the main entrance to open. The existing track and field improvements are complete and a new football scoreboard will be installed. The project closeout and financial reconciliation process with the construction manager is underway. The project is ready to be occupied in August 2021.

The construction manager for the **Sharon Elementary School Building Addition** has achieved substantial completion for the new classroom wing and the cafeteria expansion. The building occupancy approvals have been granted. The FF&E installation is complete and staff have moved into the new classroom wing. The architect's punch list is complete and most open issues are finalized. The project will now move into the closeout phase. The 16-classroom addition and cafeteria expansion has been occupied and is ready for school in August.

The construction manager for the **South Academy of International Languages** (*Fka New K-8 Language Immersion South*) worked diligently on the punch list and commissioning items and has the list down to a minimal amount. The building has been occupied and is ready for school in August.

The **South Pine Academy** (*fka New Elementary School (Nations, Sterling, Steele Creek Relief)*) construction manager completed the new building and is working through the commissioning and punch list items. FF&E installations are nearing completion. The new 45-classroom relief elementary school has been occupied and is ready for school in August.

The trade contractors continue to work throughout the **West Charlotte High School** facility. The crews are working from rough-ins to interior finishes. The roof is nearing completion allowing most areas to move into finish installation including gypsum wall board and fixtures. The mechanical contractor has also completed most of the above ceiling piping for the HVAC system in anticipation of conditioned air. The perimeter exterior walls are complete and brick veneer and metal panel wall systems are being finalized. Windows are also being installed. The site contractor continues to prep areas as available for curb & gutter and parking lots. The project team is working through supply chain logistics and issues with material availability. Some product substitutions are being considered to maintain overall construction schedule. The project is scheduled to be occupied August 2022. Once the new school is occupied the existing school will be demolished and final site work will take place with final project completion in August 2023.

The **West Mecklenburg High School Gym** construction manager has reached substantial completion and occupancy approvals have been granted. The architect's punch list has been generated and the trade contractors are working off any open issues. Site paving is complete and all parking areas are open and ready for school to start. The FF&E deliveries are complete and the school staff has moved into the facility. The project will now move into the closeout phase.

DESIGN AND BIDDING

The following is a summary of the activity on the bond funded projects in design and bidding phase during the month of July.

The **E.E. Waddell High School** project is currently in the design development phase. The design managers are continuing to coordinate scope with CMS operations for the repurpose project. The design development submission will be issued in August for review and comments. The project consists of light renovations to the existing science classrooms, maker space, lobby, HVAC work, limited VCT and acoustical ceiling replacement. This project is scheduled to start construction by summer of 2022 and be completed prior to occupancy in August of 2023.

The **John Tyler Williams Secondary Montessori** project is in the schematic design phase. The project consists of architectural and MEP renovations to the infrastructure of the campus. The interior and civil exploration of the existing campus continues to progress.

The **Mountain Island School** project has progressed to the schematic design phase. This project consists of a building addition containing a middle school gymnasium, art, dance and two core classrooms. This project is scheduled to be completed in August 2023.

The **New Elementary School (Elon, Hawk Ridge, Polo Relief)** project continues to progress in the design development phase. The traffic analysis study and rezoning application are completed and released to CDOT and Zoning Department for review and comments. This new 45-classroom school will be located across from the Ardrey Kell High School and is scheduled for occupancy in August 2023.

The **New Elementary School (Hidden Valley, JW Grier, Newell Relief)** project has submitted the design development documents for review and comments. Development of the traffic analysis study has been submitted to NCDOT for their review and comments. This new 45-classroom school will be located next to Northridge Middle School and is scheduled for occupancy in August 2023.

The **New Elementary School (Windsor, Winterfield, Idlewild Relief)** project has progressed into the design development phase. Due diligence deliverables continue to progress with delivery due in August. The project is planned to be located on land in the Executive Circle Drive area. This new 45-classroom school facility is scheduled for occupancy in August 2023.

The **New High School (South, Ardrey Kell Relief)** design development comments have been returned to the architect for responses and incorporation. CDOT's comments on the traffic analysis study have been received and discussions with CDOT continue. Local and state agency discussions and reviews with Charlotte Water, Army Corps of Engineers, and others departments continue to progress. The project's rezoning application has been submitted. This project consists of a new 100-classroom high school with athletic play fields and stadium.

The teams are also reviewing the schedules for the projects in design with the construction managers to identify and try to address the current material delivery delays due to supply chain issues e.g. bar joist, metal decking, LED lighting, insulation, metal studs, etc. Some alternative procurement strategies and products are being evaluated for implementation to assist in mitigating the extended lead times.

CONTROLS

Expenditures for the month of July were \$19.9M against the 2022 fiscal year cash flow projection of \$260M. The Controls team provided a quarterly update to Mecklenburg County for the 2013 and 2017 Bond Programs. The update included the status of projects and cash flow projection. The team also noted the potential supply chain concerns related to the COVID-19 pandemic. Additionally, the Controls team continues the reconciliation and closeout of completed 2013 and 2017 bond projects. Available funding is being accumulated to be used for future capital needs.

The Controls team continues to submit notices of potential changes at school sites so senior staff can adequately evaluate any issues. Additionally, the Controls team continues the processing of contracts, invoices, preparing notices of potential change, change orders, pay applications and check requests for projects under construction. Captured construction cost data is used to prepare financial reports such as detailed cost reports, budget summaries, reconciliation to CMS books, revisions to and updated cash flows and complete special financial requests by CMS and Mecklenburg County. This process, along with data compilation and management, allows senior staff to provide the proper guidance/direction and accurate information to the program stakeholders.

No Bond related consent items were submitted for Board of Education approval during the month of July 2021.

MWSBE

As of July 2021 the overall MWSBE utilization percentage related to design and construction of the 2017 bond projects is 49.25% which includes 20.79% participation by minority contractors, 27.53% by women contractors and 0.93% participation by small business contractors. This accounts for more than \$275 million of utilization by Minority, Women and Small Business Contractors.

The Diversity & Inclusion Office of Charlotte-Mecklenburg Schools continued to conduct several individual virtual orientations with new MWSBE contractors and prime contractors. In addition, team members also attended/hosted the following outreach sessions/pre-bid meetings and/or workforce development opportunities:

- Garinger HS – New Building Renovations pre-construction meeting hosted by Balfour Beatty
- United Minority Contractors of North Carolina annual meeting
- Charlotte MED Week 2021 planning meeting

Workforce Development:

CMS Office of Diversity & Inclusion and Capital Program Services will host two (2) CMS student summer interns through the Mayor's Youth Employment Program (MYEP). The interns will participate in virtual project management/design meetings, learn construction/engineering related terms, jobsite safety awareness/COVID-19 requirements, design specifications/submittal review process, interview career industry experts, participate in on-line virtual construction/engineering related simulation courses and complete a project to apply their learnings. The student's college/career related interest will in-form all work-related activities.

- Summer 2021 Internships (high school)
- Summer 2021 Internships (college)

- 13
- 21

Mayor's Youth Employment Program, CPCC Construction Program & CMS College graduates

<ul style="list-style-type: none"> New Hires (Temporary) New Hires (Permanent) <p><i>Types of Jobs: electrical, HVAC, plumbing and site construction</i> <i>Note 3 are ROC graduates</i></p>	<ul style="list-style-type: none"> 2 20
<ul style="list-style-type: none"> Training/Job Shadow Hours 	<ul style="list-style-type: none"> 80
<ul style="list-style-type: none"> Activities/Scholarships 	<ul style="list-style-type: none"> Site tours for Goodwill students Plumbing firm helping to build curriculum at CPCC Virtual CTE presentations Mock interviews and career prep sessions AGC Build Your Career Workforce Development Program Students in Construction Program (5 students from South Mecklenburg) She Built This City Camp Career Path Program at West Charlotte

Over the next month, team members will continue to work with contractors interested in bidding on the upcoming school projects utilizing various virtual tools to communicate. Contractors are encouraged to review bid advertisements in Charlotte Observer and register as a vendor on the North Carolina Interactive Purchasing System for notification of the various opportunities.

BOND PROGRESS SUMMARY As of July 2021

Funding Source and Value		Amount Committed/Pending	Amount Paid to Date	Amount Expended This Period
2013 Bond	\$301,699,770	\$300,335,994	\$288,049,566	\$33,197
2017 Bond	\$1,019,279,985	\$627,846,158	\$392,379,228	\$19,900,438
Grand Total	\$1,320,979,755	\$928,182,152	\$680,428,794	\$19,933,635

UPCOMING MAJOR CONSTRUCTION PROCUREMENT DATES *Three Month Look Ahead*

School Name

Bid Dates*

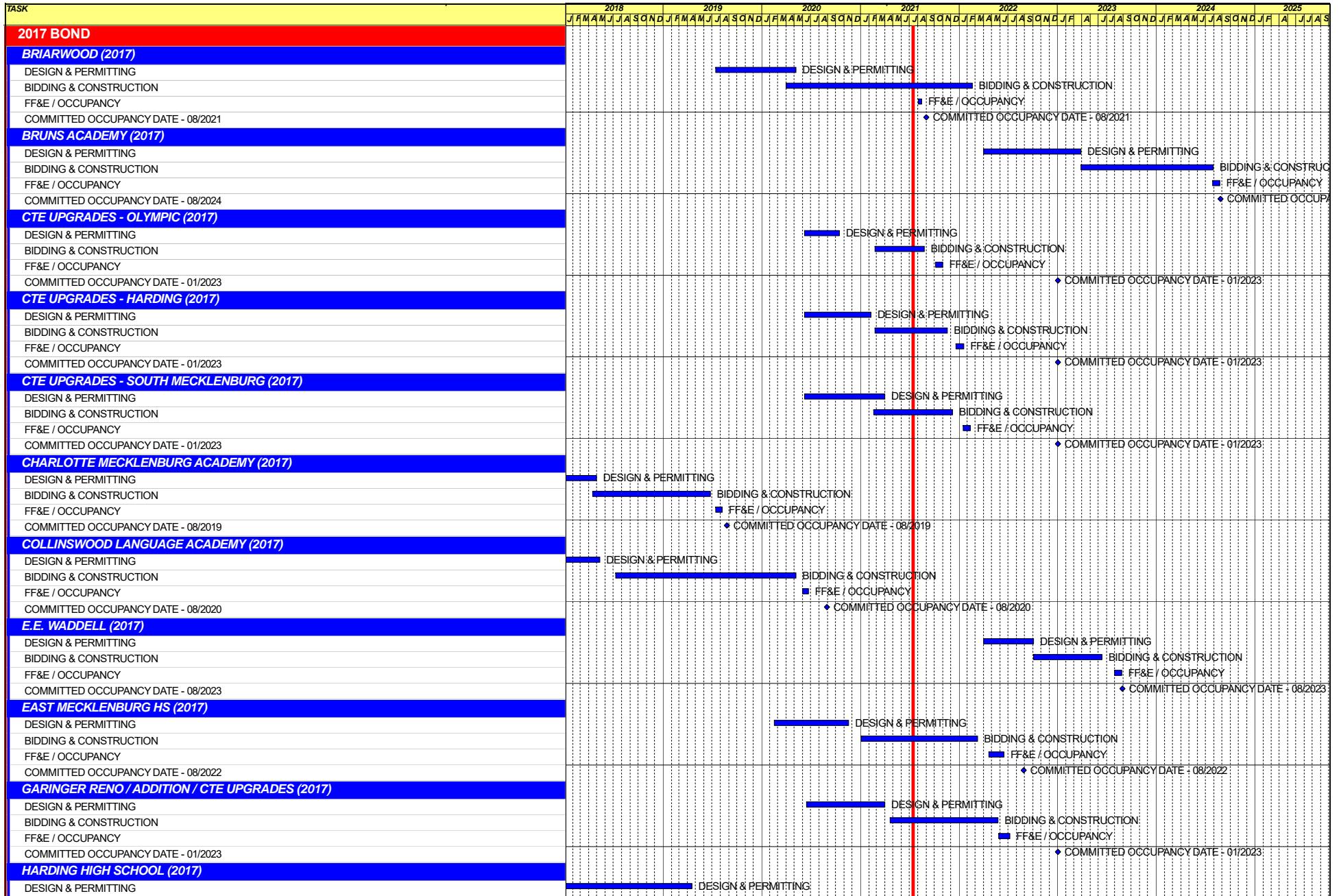
** NOTE: Work In Progress...Dates Subject to Change.*

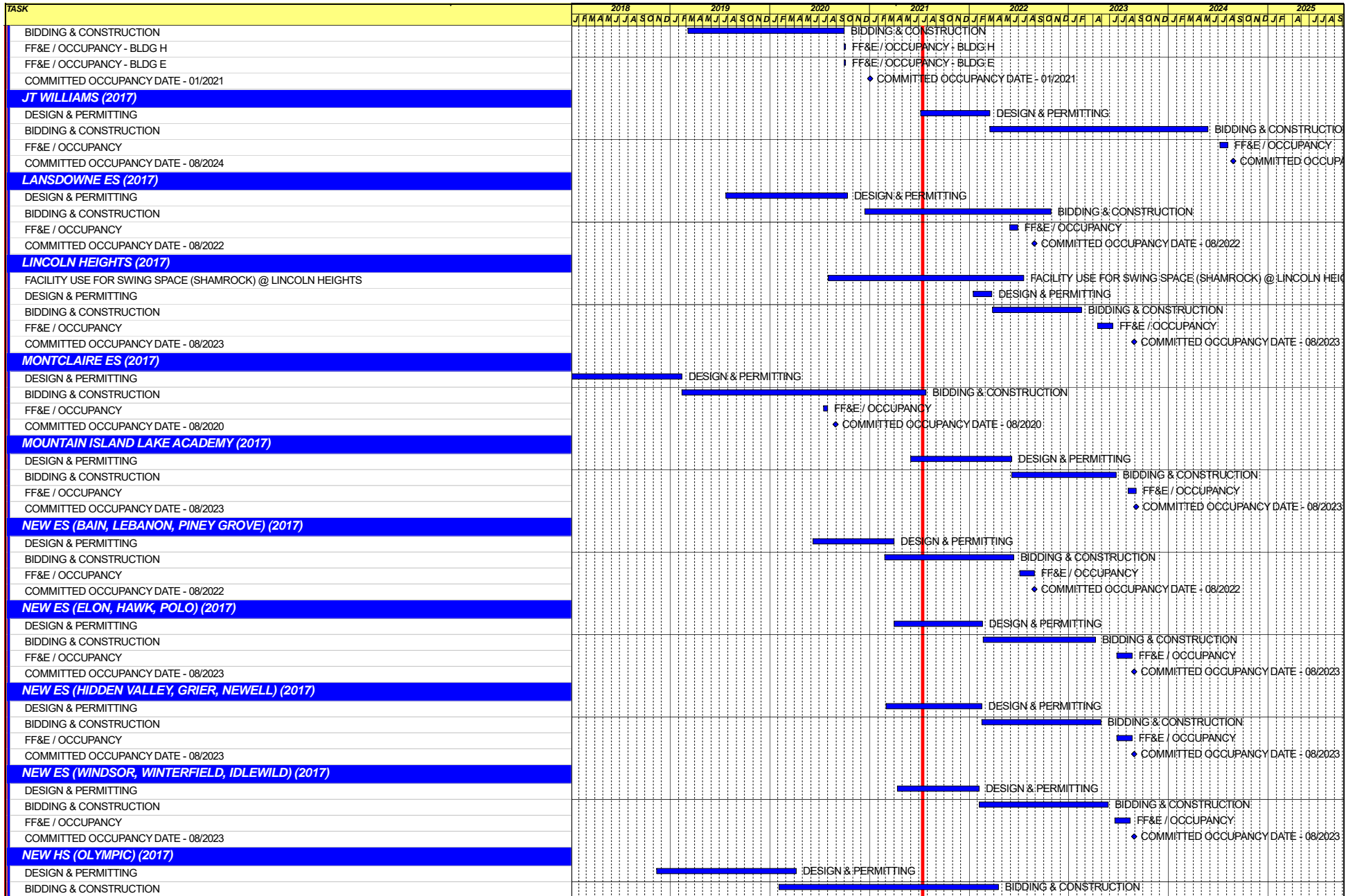
SWING SPACE UTILIZATION

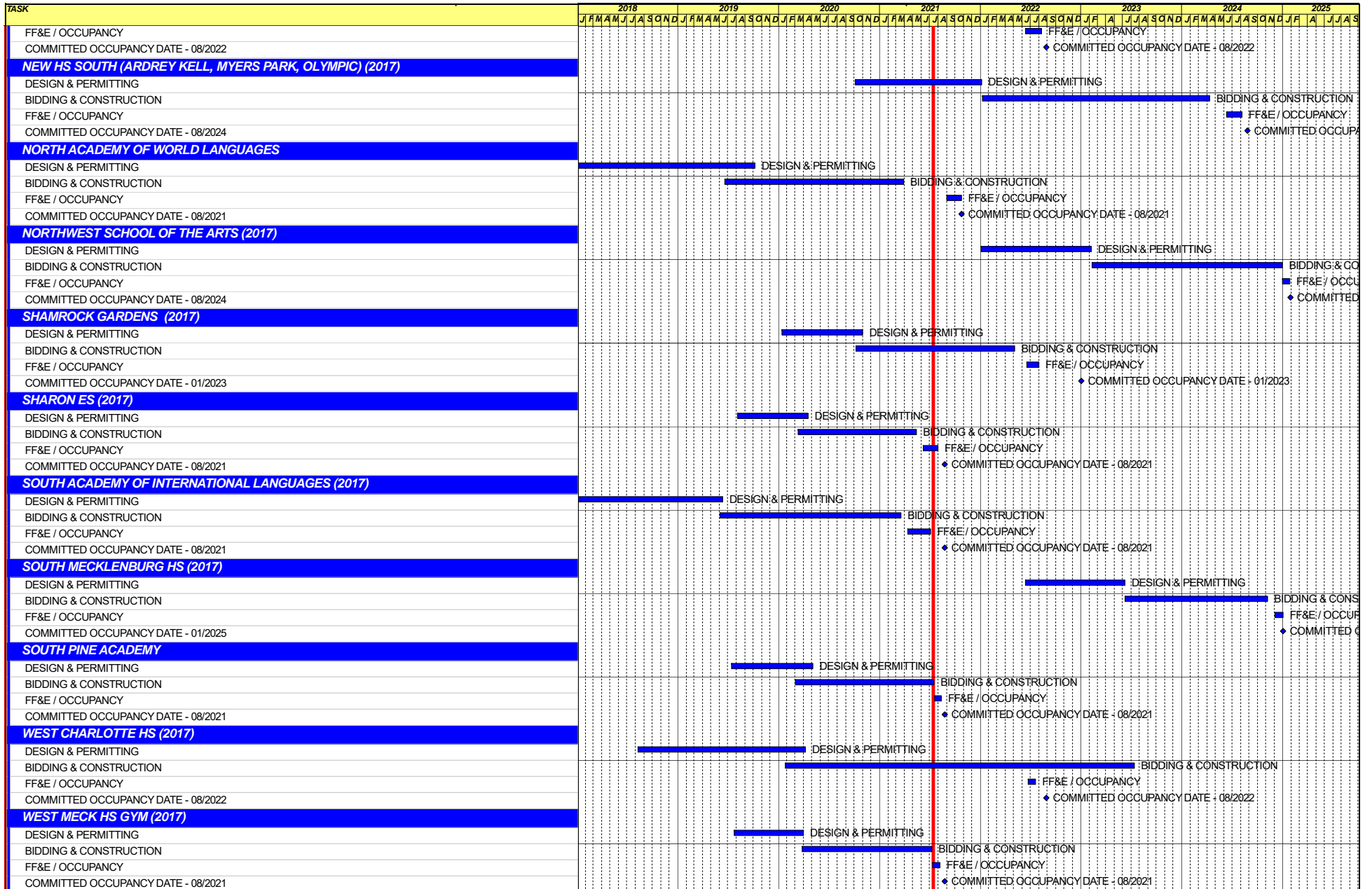
Creating a temporary space for students and staff to occupy during construction on a school’s campus has proven to be beneficial to the project’s schedule and cost and overall safety and efficiency of school operations. When the renovation or expansion of a facility is performed and the facility must remain functionally operational, there are benefits to the owner in using swing space.

We have successfully utilized both onsite and offsite swings. The most desirable swings are “offsite” ones. Onsite swing using mobiles or modulars, likewise has been successfully used. The following is a summary of current swing options planned or in use.

<u>School</u>	<u>No. of Mobiles/Relocation Site</u>	<u>Status (From – To)</u>
Shamrock	Lincoln Heights	August 2020 – August 2022







Capital Improvements Program

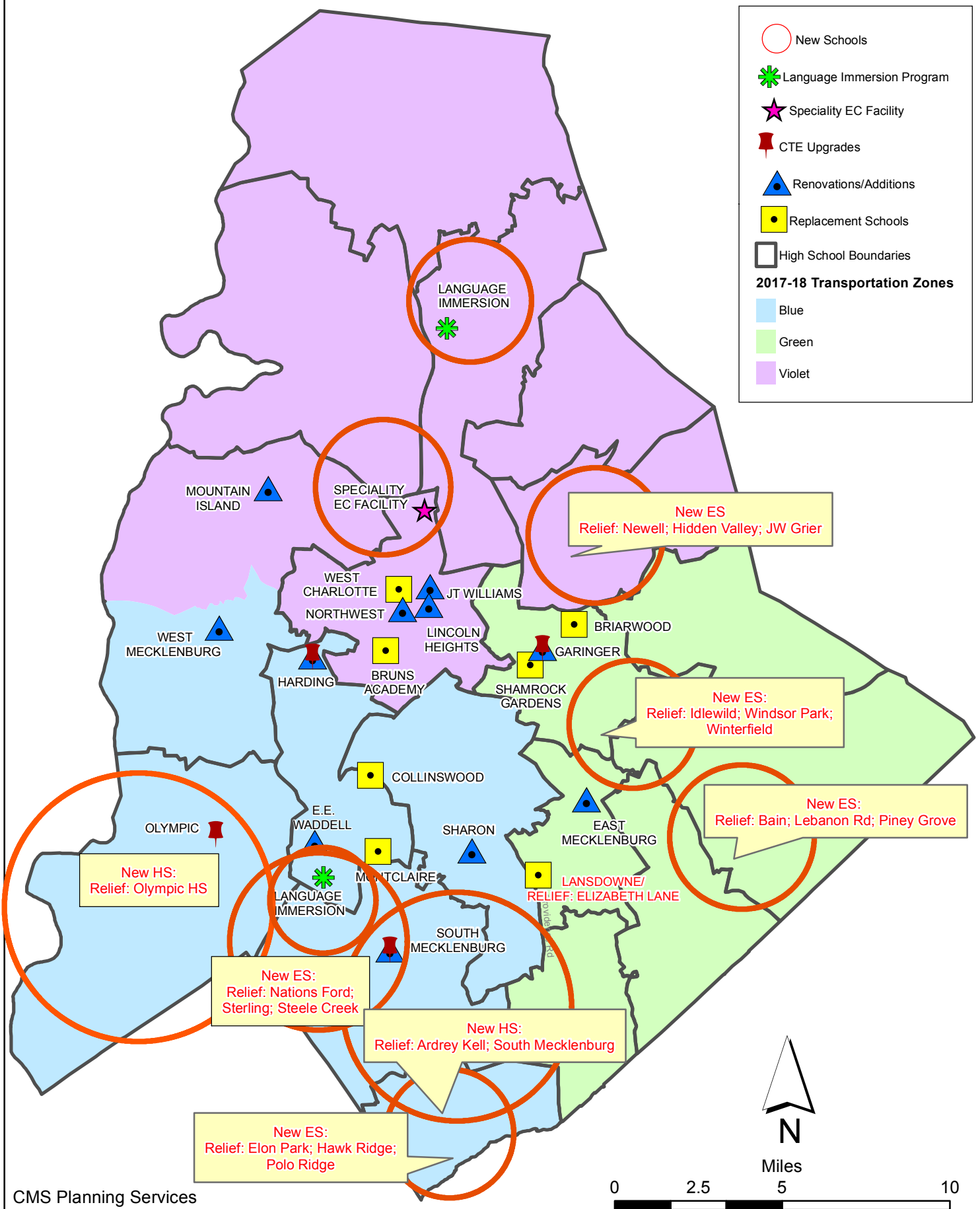
Projects in Design or Under Construction

School	Architect	General Contractor/CM
Projects In Design		
E.E. Waddell (17)	Moseley	TBD
J.T. Williams (17)	FWA	New Atlantic
Lincoln Heights Repurpose (17)	Neighboring Concepts	TBD
Mountain Island School (17)	ADW	Whiting-Turner
New ES (Elon,Hawk Ridge, Polo Ridge) (17)	Little Diversified	Balfour Beatty
New ES (Hidden Valley, JW Grier, Newell) (17)	ADW	Edifice, Inc.
New ES (Windsor, Winterfield, Idlewild) (17)	Neighboring Concepts	Rodgers-Holt Brothers
New HS (South, Ardrey) (17)	Ratio	Messer
Projects in Bid/Award/Construction Phase		
Briarwood Elementary School Replacement (17)	ADW	New Atlantic
CTE (Harding, Olympic, South) (17)	MPS	Branch Brownstone
East Mecklenburg High School (17)	Morris Berg	Turner Construction
Garinger Addition/Renovation & CTE (17)	LS3P	Balfour Beatty
Lansdowne Elementary School Replacement (17)	Perkins Eastman	Edifice, Inc.
Montclair Elementary School (17)	WHN	Messer
New ES (Bain, Lebanon Rd, Piney Grove) (17)	FWA	Metcon
New High School (Olympic Relief) (17)	Little Diversified	Edifice, Inc.
North Academy of World Languages (17)	ADW	New Atlantic
Shamrock Gardens Elementary School Replacement (17)	Little Diversified	Rodgers-Holt Brothers
Sharon Elementary School (17)	Clark Nexsen	Samet
South Academy of International Languages (17)	FWA	Messer
South Pine Academy (17)	FWA	Metcon
West Charlotte High School (17)	LS3P	Rodgers-Holt Brothers
West Mecklenburg Gym (17)	Moseley	Barnhill/DA Everett

Capital Improvements Program
Projects Substantially Completed/Closed *

School	Turnover Year	Architect	General Contractor
Collinswood Language Academy (17)	Aug-20	Perkins Eastman	Turner Construction
Harding High School Renovation (17)	Aug-20	SFLA	Barnhill Contracting
Rea Farms STEAM Academy (13)	Aug-20	Little Diversified	Balfour Beatty
Ashley Park K-8 Conversion (13)	Aug-19	ADW	Turner Construction
Druid Hills K-8 Conversion (13)	Aug-19	ADW	Edifice, Inc.
Selwyn Elementary (13)	Aug-19	Clark Nexsen	Balfour Beatty
Charlotte Mecklenburg Academy (17)	Aug-19	KSQ	Edifice, Inc.
Davidson K-8 (13)	Aug-19	Little Diversified	Gilbane
CTE - North Mecklenburg High (13)	Aug-19	LS3P	Shiel Sexton
CTE - Garinger (13)	Mar-19	LS3P	Hostetter & Son
CTE - Independence (13)	Mar-19	LS3P	D.E. Brown
CTE - West Mecklenburg (13)	Mar-19	LS3P	Hostetter & Son
Charlotte East Language Academy (13)	Aug-18	Morris Berg	Edifice, Inc
Myers Park High School Phase 3 (13)	Aug-18	Boomerang Design	BE&K
Northridge Middle (13)	Aug-18	Morris Berg	Barnhill Contracting
Myers Park High Bldg 2 (13)	Feb-18	Boomerang Design	BE&K
East Mecklenburg High Addition (13)	Jan-18	Bergman (fna Gantt Huberman)	Edifice, Inc.
J.M. Alexander Middle (13)	Aug-17	FWA Group	Balfour Beatty
Northwest School of the Arts Renovation (13)	Aug-17	Moseley	Turner Construction
Renaissance West STEAM Academy (13)	Aug-17	Little Diversified	Rodgers Construction
South Mecklenburg High Addition (13)	Jul-17	SFLA	Barnhill Contracting
Myers Park High Bldg 1 (13)	Sep-16	Boomerang	KBR
Statesville Road Elementary (13)	Aug-16	ADW	JE Dunn
Nations Ford Elementary (13)	Aug-16	Wash Hatem Nelson	Messer Construction
Olympic High Addition (13)	Aug-16	McMillan, Pazdan, Smith	Turner Construction
Lawrence Orr Elementary (07)	Aug-15	Cort Architectural Group	DH Griffin/Metcon
Parkside Elementary (07)	Aug-15	Wash Hatem Nelson	Clancy & Theys
Hawthorne High Renovations (07)	Aug-15	Morris-Berg	Balfour Beatty
Newell Elementary (07)	Aug-15	Perkins Eastman	New Atlantic Contracting
Ranson Middle (07)	Aug-15	Morris-Berg	Edifice, Inc.
Vance High	Jan-15	LS3P	Matthews Construction Co., Inc.
Garinger High - Renovations/Addition	Aug-14	Adams Group Architects	Turner Construction
Olympic High - Stadium	Aug-14	Site Solutions	Turner Construction
West Mecklenburg High - Stadium	Aug-14	Site Solutions	Turner Construction
Collinswood - Indoor Air Quality	Aug-14	PEA	The Bowers Group
Lansdowne - Indoor Air Quality	Aug-14	AeroRaq	Tyler 2
McKee Road - Indoor Air Quality	Aug-14	McCracken & Lopez	Godfrey Construction
Garinger High - Track & Field	Jul-14	Site Solutions	Turner Construction
Independence High - Gym	Jun-14	Shook Kelly	Shelco, Inc. (CM)
Palisades Park Elementary	May-14	Wash Hatem Nelson	Clancy & Theys
East Mecklenburg High Auditorium	Jan-14	Gantt Huberman Associates	Godfrey Construction Co., Inc.
Pineville Elementary	Aug-13	Cort Architectural Group	Beam Construction Co., Inc.
Bain Elementary	Aug-13	ADW	Edison Foard
Grand Oak Elementary	Aug-13	ADW	Matthews Construction Co., Inc.
McClintock Middle	Aug-13	FWA Group	Shelco, Inc.
Sedgefield Elementary Demolition	Oct-12	Cort Architectural Group	EHG, LLC
Alexander Graham Middle Gym Reno	Aug-12	MBAJ Architecure	Edison Foard
First Ward - Demolition & Bus lot	Aug-12	MBAJ Architecure	T.K. Browne
South Meck High Parking Lot Renovation	Aug-12	Little Diversified	Sorenson Gross
Cochrane Middle - Kitchen	Aug-11	MBAJ Architecure	Sorenson Gross
Hough High	Aug-10	Little Diversified	Rodgers Construction
Rocky River High	Aug-10	Little Diversified	Balfour Beatty

CMS Capital Improvement Plan 2017 Bond Projects



PROJECT STATUS REPORT



Monthly Project Status 2017 Bond Summary July 2021

Project	Current Project Estimate	Project Scope	** Occupy On	Design Phase	Construction Progress	Project Status
Briarwood Elementary School (17)	\$ 31,962,730	45-classroom replacement facility; replaces school built in 1956.	August 2021	Complete	86 %	The construction manager for the Briarwood Elementary Replacement School completed the construction of the new building in late July. The team has been focused on completing the punch list and commission items prior to occupancy by the staff. The temporary construction fence has been installed to maintain separation between the new building and the old to prepare for demolition. FF&E installations are scheduled to begin the first week of August. The 45-classroom replacement school will be ready for occupancy in August. Upon completion, demolition and remaining site work will commence and be completed in 2022.
Bruns Academy (17)	\$ 39,784,927	New 45-classroom elementary school (K-5); replaces old school built in 1969.	August 2024	Not Started	0 %	This project is scheduled to start design Spring 2022.

Monthly Project Status

2017 Bond Summary

July 2021

Project	Current Project Estimate	Project Scope	** Occupy On	Design Phase	Construction Progress	Project Status
Career and Technology Education (17)	\$ 10,159,765	Phase I CTE upgrades at Olympic, Harding, Garinger and South Mecklenburg.	January 2023	Complete	27 %	The CTE projects at Harding, South Mecklenburg and Olympic are nearing completion of selective demolition. Interior metal stud framed walls are progressing allowing in wall rough-ins to follow. The underground rough-ins for plumbing and electrical have also progressed where floor slabs were removed. The project team is working through supply chain logistics and issues with material availability. In some cases, product substitutions are being considered to maintain overall construction schedule. Harding and South Mecklenburg have new bathrooms that are focus points for the summer to provide use in late August. The Harding project consists of renovations to existing classrooms in the auditorium building to develop a suite of technology classrooms. The project at Olympic includes electrical up fits to the existing carpentry lab which expands the curriculum to include demonstration learning booths for plumbing and electrical trades. The project at South Mecklenburg consists of renovating the old kitchen area into a culinary arts lab and classroom.
Charlotte-Mecklenburg Academy (17)	\$ 18,079,506	New EC school located on the old Statesville Elementary School site.	August 2019	Complete	100 %	Project is complete.
Collinswood Language Academy (17)	\$ 42,272,540	New 63-classroom K-8 facility on the site of the Smith Family Center.	August 2020	Complete	100 %	Project is complete.
E.E. Waddell (17)	\$ 5,137,367	Repurpose current E.E. Waddell to reopen as a magnet high school.	August 2023	Design Development	0 %	The E.E. Waddell High School project is currently in the design development phase. The design managers are continuing to coordinate scope with CMS operations for the repurpose project. The design development submission will be issued in August for review and comments. The project consists of light renovations to the existing science classrooms, maker space, lobby, HVAC work, limited VCT and acoustical ceiling replacement.

Monthly Project Status

2017 Bond Summary

July 2021

Project	Current Project Estimate	Project Scope	** Occupy On	Design Phase	Construction Progress	Project Status
East Mecklenburg High School (17)	\$ 15,058,594	This project will provide for the design, and construction of a new 30 classroom building.	August 2022	Complete	20 %	The construction manager for East Mecklenburg High School has completed pouring floor slabs up to the point where it is impacted by existing Duke Energy primary underground power lines. The existing primary power line feeding the 500 Building is scheduled to be relocated but delays with Duke Energy continue to impact the schedule, once the line is relocated work in the area will commence. The water line to feed the new building has been installed to Monroe Road. The project team is working through supply chain logistics and issues with material availability. In some cases, product substitutions are being considered to maintain overall construction schedule.
Garinger High School (17)	\$ 14,486,979	Project includes the design and construction for renovations of 300 building and a new 16 classroom building.	January 2023	Complete	2 %	The Garinger Addition and Renovation construction manager mobilized and installed the construction fence, construction trailer and began grading operations.
Harding High School (17)	\$ 14,530,263	Renovation of the kitchen, cafeteria, existing gym (aux) and the addition of a new gym.	August 2020	Complete	99 %	Construction Manager has change items that will be completed summer 2021 and is finalizing financial reconciliation.
JT Williams (17)	\$ 15,732,600	Project includes building renovations to J.T. Williams Montessori magnet.	August 2024	Schematic	0 %	The John Tyler Williams Secondary Montessori project is in the schematic design phase. The project consists of architectural and MEP renovations to the infrastructure of the campus. The interior and civil exploration of the existing campus continues to progress.
Lansdowne Elementary School (17)	\$ 37,128,834	New 45-classroom school; replaces old school built in 1959 and relieve crowding at Elizabeth Lane ES.	August 2022	Complete	25 %	The Lansdowne Elementary School construction manager continues to dig and pour perimeter building footings. They will be pouring the slab on grade in phases as underground electrical and plumbing rough-ins are completed. The building has now started vertical construction with load bearing masonry and structural steel framing. The underground storm water detention pipes have been delivered and installation is ongoing. The project team continues to work through supply chain issues with material availability. The existing school sanitary sewer lines have been rerouted around the current construction area.

Monthly Project Status

2017 Bond Summary

July 2021

Project	Current Project Estimate	Project Scope	** Occupy On	Design Phase	Construction Progress	Project Status
Lincoln Heights Elementary School (17)	\$ 4,588,675	Repurpose and reopen as magnet school.	August 2023	Construction Documents	0 %	Shamrock Gardens will be utilizing the Lincoln Heights Elementary building as swing space August 2020 - August 2022. Playgrounds were replaced and new digital signage was installed summer 2020. Based on Board approval in May 2021 the occupancy date has been moved to 2023.
Montclair Elementary School (17)	\$ 28,559,390	New 45-classroom replacement facility replacing school built in 1958.	August 2020	Complete	99 %	The construction manager for the Montclair Elementary School completed the conversion of the temporary ponds to the permanent sand filters. They continued with the maintenance of the newly installed grassed areas and dressed the site for the upcoming school year. The new 45-classroom elementary school building has been occupied. The remaining site work is being finalized.
Mountain Island Lake Academy (17)	\$ 10,488,400	K-8 Phase 2 - New gymnasium and specialty classrooms.	August 2023	Schematic	0 %	The Mountain Island School project has progressed to the schematic design phase. This project consists of a building addition containing a middle school gymnasium, art, dance and two core classrooms.
New Elementary School (Bain, Lebanon, Piney Grove) (17)	\$ 31,455,951	New 45-classroom elementary school; relieves crowding at Bain, Lebanon Road, Piney Grove.	August 2022	Complete	8 %	The New Elementary School (Bain, Lebanon, Piney Grove Relief) under slab plumbing and electrical rough-ins were installed and the first floor slab has been completed. The grading contractor is also working on the front parking lot which will also be used for construction parking during this phase of the project.
New Elementary School (Elon, Hawk Ridge, Polo Relief) (17)	\$ 43,476,676	New 45-classroom elementary school to relieve Elon, Hawk Ridge, Polo.	August 2023	Design Development	0 %	The New Elementary School (Elon, Hawk Ridge, Polo Relief) project continues to progress in the design development phase. The traffic analysis study and rezoning application are completed and released to CDOT and Zoning Department for review and comments.
New Elementary School (Hidden Valley, JW Grier, Newell) (17)	\$ 34,697,022	New 45-classroom elementary school; relieves overcrowding at Hidden Valley, J.W. Grier, Newell.	August 2023	Design Development	0 %	The New Elementary School (Hidden Valley, JW Grier, Newell Relief) project has submitted the design development documents for review and comments. Development of the traffic analysis study has been submitted to NCDOT for their review and comments.

Monthly Project Status

2017 Bond Summary

July 2021

Project	Current Project Estimate	Project Scope	** Occupy On	Design Phase	Construction Progress	Project Status
New Elementary School (Windsor, Winterfield, Idlewild Relief) (17)	\$ 37,197,022	New 45-classroom elementary school to relieve Windsor, Winterfield, and Idlewild ES.	August 2023	Design Development	0 %	The New Elementary School (Windsor, Winterfield, Idlewild Relief) project has progressed into the design development phase. Due diligence deliverables continue to progress with delivery due in August.
New High School (17) (Olympic Relief)	\$ 109,908,793	New 100 classroom high school; relieves crowding at Olympic High School.	August 2022	Complete	66 %	The construction manager for the New High School Olympic Relief continued with exterior and interior metal studs and drywall installations. The mechanical, electrical and plumbing trades continued with above ceiling and in wall roughs in while focusing on work in the mechanical and electrical rooms. The pool contractor completed excavation of the pool and the underground plumbing and electrical. Site work continued on the athletic fields and erosion control throughout the site.
New High School (South, Ardrey) (17)	\$ 154,930,460	New 100 classroom high school to relieve South Mecklenburg, Ardrey Kell and Myers Park HS.	August 2024	Design Development	0 %	The New High School (South, Ardrey Kell Relief) design development comments have been returned to the architect for responses and incorporation. CDOT's comments on the traffic analysis study have been received and discussions with CDOT continue. Local and state agency discussions and reviews with Charlotte Water, Army Corps of Engineers, and others departments continue to progress. The project's rezoning application has been submitted. This project consists of a new 100-classroom high school with athletic play fields and stadium.
North Academy of World Languages	\$ 43,359,367	New 66 classroom K-8 Language Immersion facility located on the old J.M. Alexander Middle School site.	August 2021	Complete	99 %	The North Academy of World Languages (fka New K-8 Language Immersion North) project FF&E is nearing completion and the Principal and staff have moved into the new facility. The architect's punch list has been finalized and most issues have been completed. The Hambright Road improvements are complete allowing the main entrance to open. The existing track and field improvements are complete and a new football scoreboard will be installed. The project closeout and financial reconciliation process with the construction manager is underway. The project is ready to be occupied in August.

Monthly Project Status

2017 Bond Summary

July 2021

Project	Current Project Estimate	Project Scope	** Occupy On	Design Phase	Construction Progress	Project Status
Northwest School of the Arts (17)	\$ 20,467,000	Replace classroom building built in 1952 and build classroom addition that supports program.	August 2024	Not Started	0 %	Project to be funded by the County in FY22, planning underway.
Shamrock Gardens Elementary School (17)	\$ 35,358,351	New 45-classroom replacement facility.	August 2022	Complete	21 %	The Shamrock Gardens Elementary School construction manager completed the lime stabilization in the parking lots and loop roads. Curb and gutter installation began along with completing the storm and starting the fire and domestic water lines. CMU walls continued exterior and interior along with the MEP rough-ins in wall and below grade. Installation of structural steel continued and is expected to be complete in July.
Sharon Elementary School (17)	\$ 9,475,862	Add 16 classroom building and increase capacity of cafeteria.	August 2021	Complete	99 %	The construction manager for the Sharon Elementary School Building Addition has achieved substantial completion for the new classroom wing and the cafeteria expansion. The building occupancy approvals have been granted. The FF&E installation is complete and staff have moved into the new classroom wing. The architect's punch list is complete and most open issues are finalized. The project will now move into the closeout phase. The 16-classroom addition and cafeteria expansion has been occupied and is ready for school in August.
South Academy of International Languages (fka New K-8 School (South) (17)	\$ 42,959,367	New 71 classroom K-8 Language Immersion facility located on the old Nations Ford Elementary School site.	August 2021	Complete	99 %	The construction manager for the South Academy of International Languages (Fka New K-8 Language Immersion South) worked diligently on the punch list and commissioning items and has the list down to a minimal amount. The building has been occupied and is ready for school in August.
South Mecklenburg High School (17)	\$ 15,622,927	Renovate/replace two classroom buildings built in 1958 to upgrade learning conditions.	January 2025	Not Started	0 %	Project to be funded by the County in FY22, planning underway.

Monthly Project Status

2017 Bond Summary

July 2021

Project	Current Project Estimate	Project Scope	** Occupy On	Design Phase	Construction Progress	Project Status
South Pine Academy	\$ 31,572,550	New 45-classroom elementary school to relieve Nations Ford, Sterling, and Steele Creek.	August 2021	Complete	99 %	The South Pine Academy (fka New Elementary School (Nations, Sterling, Steele Creek Relief) construction manager completed the new building and is working through the commissioning and punch list items. FF&E installations are nearing completion. The new 45-classroom relief elementary school has been occupied and is ready for school in August.
West Charlotte High School (17)	\$ 109,977,166	New 100 classroom school to replace current facility built in 1954.	August 2022	Complete	55 %	The trade contractors continue to work throughout the West Charlotte High School facility. The crews are working from rough-ins to interior finishes. The roof is nearing completion allowing most areas to move into finish installation including gypsum wall board and fixtures. The mechanical contractor has also completed most of the above ceiling piping for the HVAC system in anticipation of conditioned air. The perimeter exterior walls are complete and brick veneer and metal panel wall systems are being finalized. Windows are also being installed. The site contractor continues to prep areas as available for curb & gutter and parking lots. The project team is working through supply chain logistics and issues with material availability. Some product substitutions are being considered to maintain overall construction schedule.
West Mecklenburg High School (17)	\$ 10,850,902	Provide new gymnasium, the existing gymnasium will become the auxilliary.	August 2021	Complete	93 %	The West Mecklenburg High School Gym construction manager has reached substantial completion and occupancy approvals have been granted. The architect's punch list has been generated and the trade contractors are working off any open issues. Site paving is complete and all parking areas are open and ready for school to start. The FF&E deliveries are complete and the school staff has moved into the facility. The project will now move into the closeout phase.

MONTHLY PROJECT PHOTOS

PROJECT PROGRESS PHOTOS



Briarwood Elementary School Replacement

PROJECT PROGRESS PHOTOS



Briarwood Elementary School Replacement

PROJECT PROGRESS PHOTOS



Briarwood Elementary School Replacement

PROJECT PROGRESS PHOTOS



Briarwood Elementary School Replacement



Montclair Elementary School Replacement

PROJECT PROGRESS PHOTOS



Montclaire Elementary School Replacement

PROJECT PROGRESS PHOTOS



North Academy of World Languages
(fka K-8 Language Immersion North)

PROJECT PROGRESS PHOTOS



North Academy of World Languages
(fka K-8 Language Immersion North)

PROJECT PROGRESS PHOTOS



North Academy of World Languages
(fka K-8 Language Immersion North)

PROJECT PROGRESS PHOTOS



North Academy of World Languages
(fka K-8 Language Immersion North)

PROJECT PROGRESS PHOTOS



South Academy of International Languages
(fka K-8 Language Immersion South)

PROJECT PROGRESS PHOTOS



South Academy of International Languages
(fka K-8 Language Immersion South)

PROJECT PROGRESS PHOTOS



South Academy of International Languages
(fka K-8 Language Immersion South)

PROJECT PROGRESS PHOTOS



South Academy of International Languages
(fka K-8 Language Immersion South)

PROJECT PROGRESS PHOTOS



New High School Olympic Relief

PROJECT PROGRESS PHOTOS



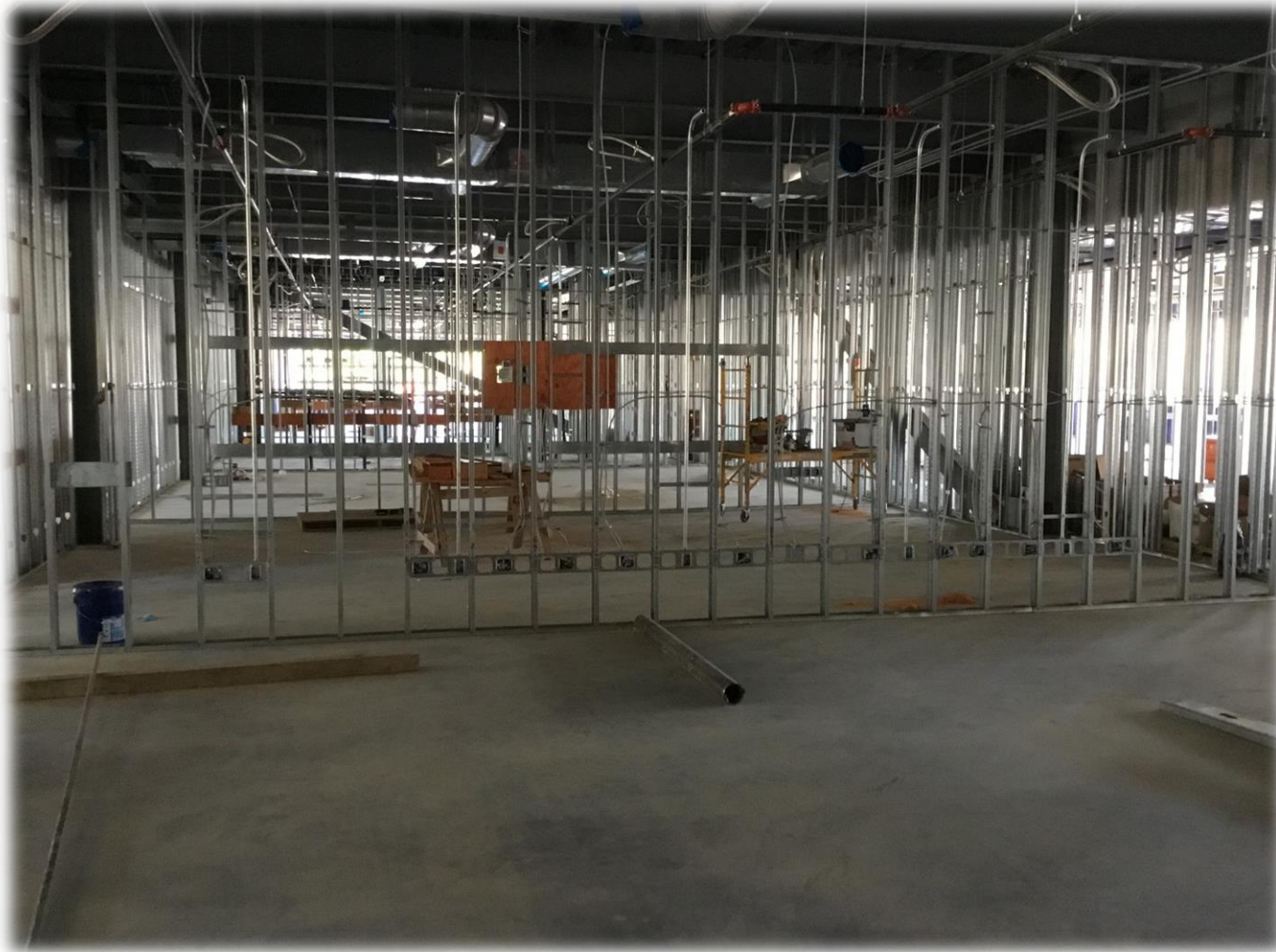
New High School Olympic Relief

PROJECT PROGRESS PHOTOS



New High School Olympic Relief

PROJECT PROGRESS PHOTOS



New High School Olympic Relief

PROJECT PROGRESS PHOTOS



New High School Olympic Relief

PROJECT PROGRESS PHOTOS



West Charlotte High School Replacement

PROJECT PROGRESS PHOTOS



West Charlotte High School Replacement



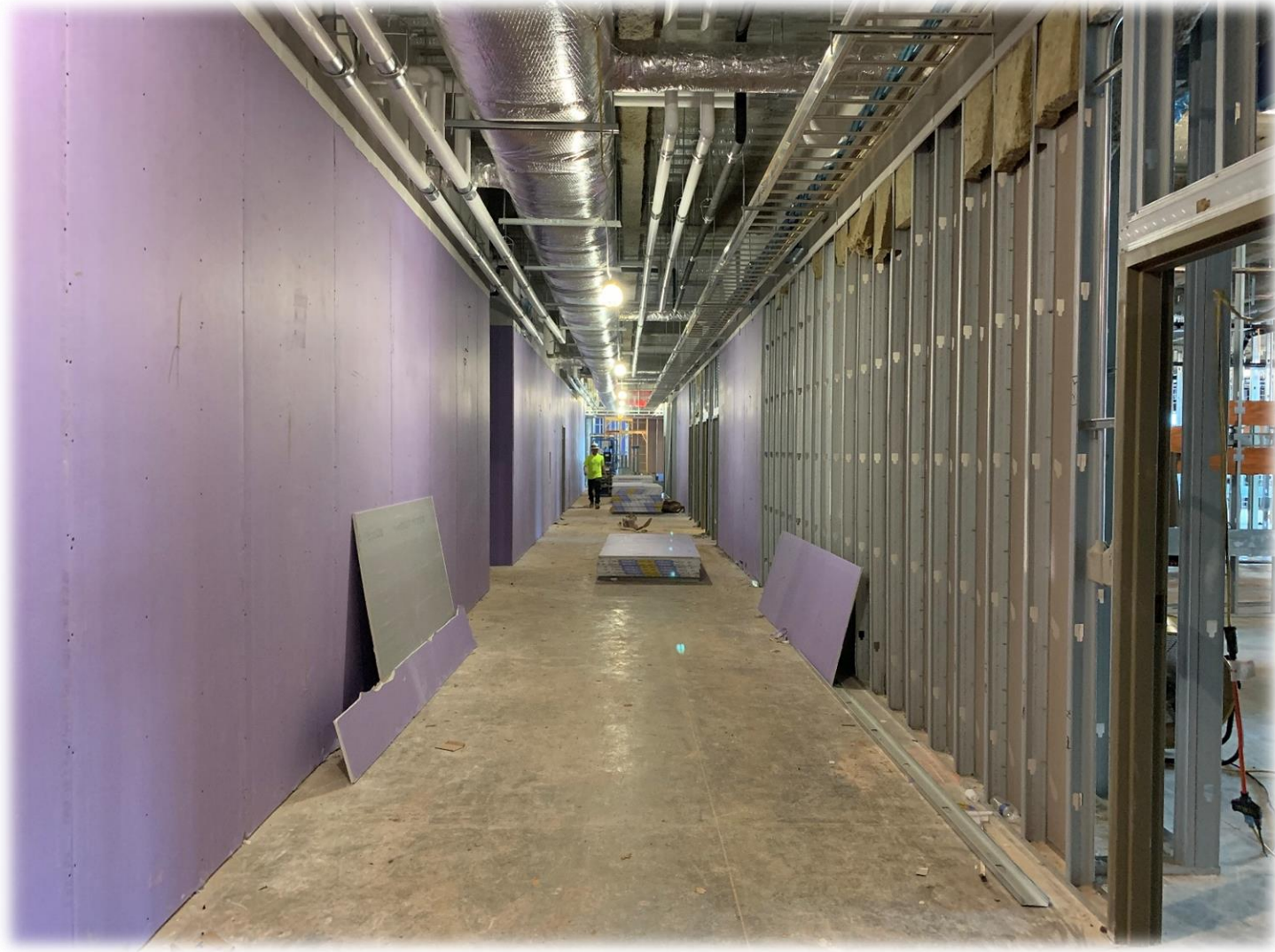
West Charlotte High School Replacement

PROJECT PROGRESS PHOTOS



West Charlotte High School Replacement

PROJECT PROGRESS PHOTOS



West Charlotte High School Replacement

PROJECT PROGRESS PHOTOS



South Pine Academy
(fka New ES Nations Ford, Sterling, Steele Creek)

PROJECT PROGRESS PHOTOS



South Pine Academy
(fka New ES Nations Ford, Sterling, Steele Creek)

PROJECT PROGRESS PHOTOS



South Pine Academy
(fka New ES Nations Ford, Sterling, Steele Creek)

PROJECT PROGRESS PHOTOS



South Pine Academy
(fka New ES Nations Ford, Sterling, Steele Creek)

PROJECT PROGRESS PHOTOS



Sharon Elementary School Addition

PROJECT PROGRESS PHOTOS



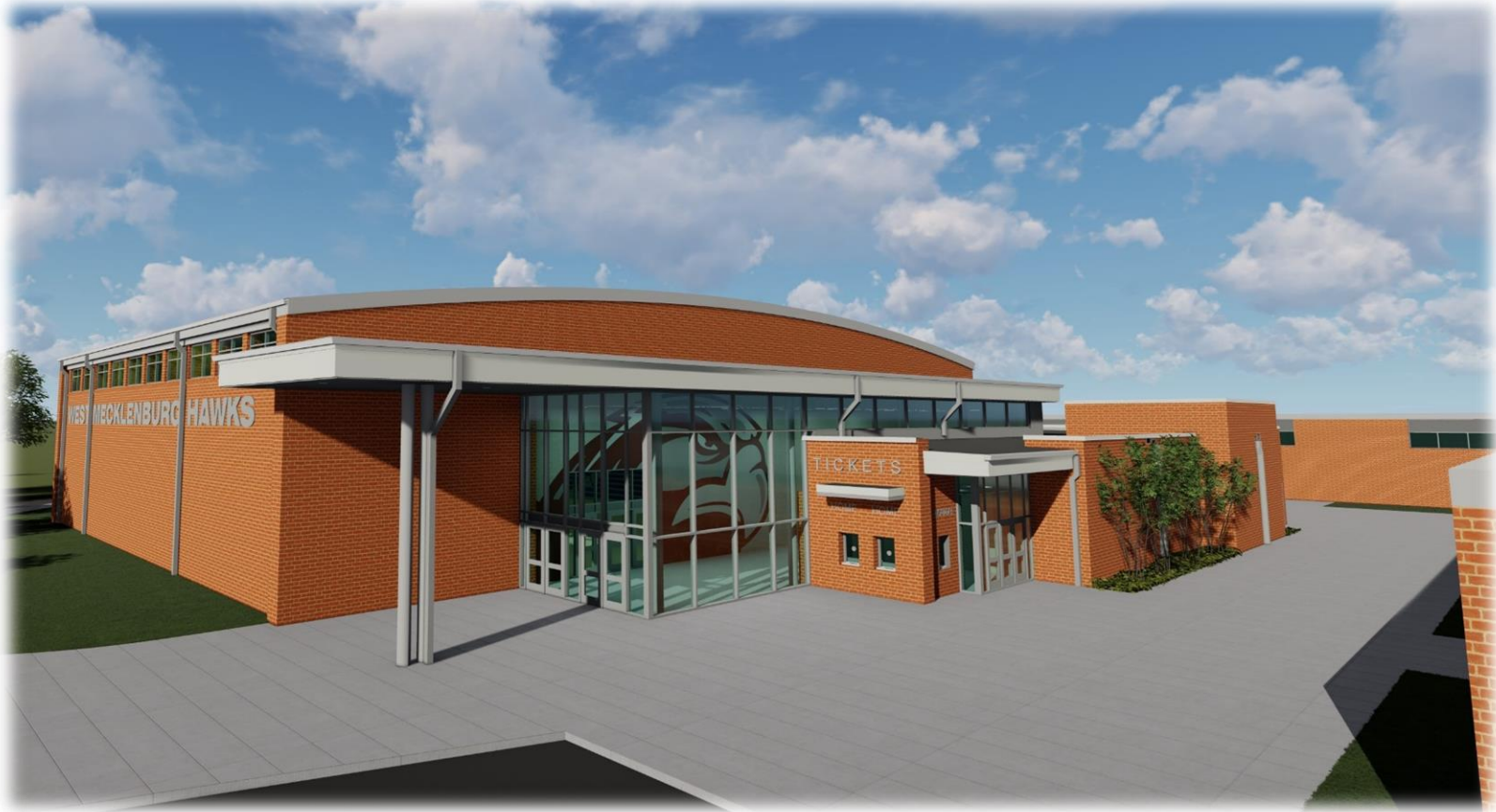
Sharon Elementary School Addition

PROJECT PROGRESS PHOTOS



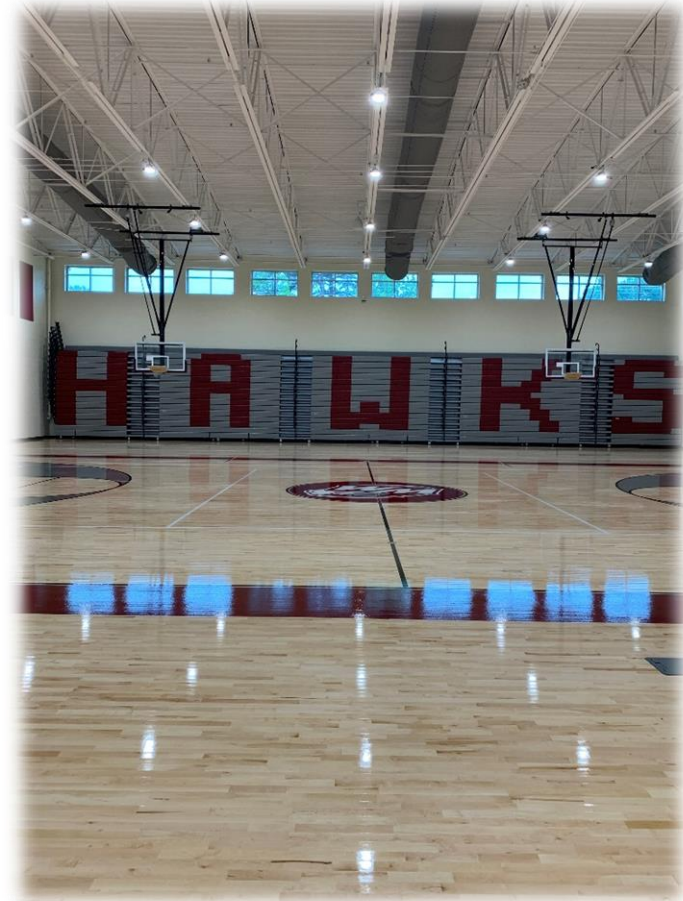
Sharon Elementary School Addition

PROJECT PROGRESS PHOTOS



West Mecklenburg High School Gym

PROJECT PROGRESS PHOTOS



West Mecklenburg High School Gym

PROJECT PROGRESS PHOTOS



West Mecklenburg High School Gym

PROJECT PROGRESS PHOTOS



Shamrock Gardens Elementary School

PROJECT PROGRESS PHOTOS



Shamrock Gardens Elementary School

PROJECT PROGRESS PHOTOS



Shamrock Gardens Elementary School

PROJECT PROGRESS PHOTOS



Lansdowne Elementary School

PROJECT PROGRESS PHOTOS



Lansdowne Elementary School

PROJECT PROGRESS PHOTOS



Lansdowne Elementary School

PROJECT PROGRESS PHOTOS



East Mecklenburg High School

PROJECT PROGRESS PHOTOS



East Mecklenburg High School

PROJECT PROGRESS PHOTOS



East Mecklenburg High School

PROJECT PROGRESS PHOTOS



New ES (Bain, Lebanon, Piney Grove Relief)

PROJECT PROGRESS PHOTOS



New ES (Bain, Lebanon, Piney Grove Relief)

MWSBE PARTICIPATION REPORT

Contract Status Report - MWSBE Participation Commitments

Report Date 8/23/2021

Charlotte-Mecklenburg Schools

8/23/2021 4:08:02 PM

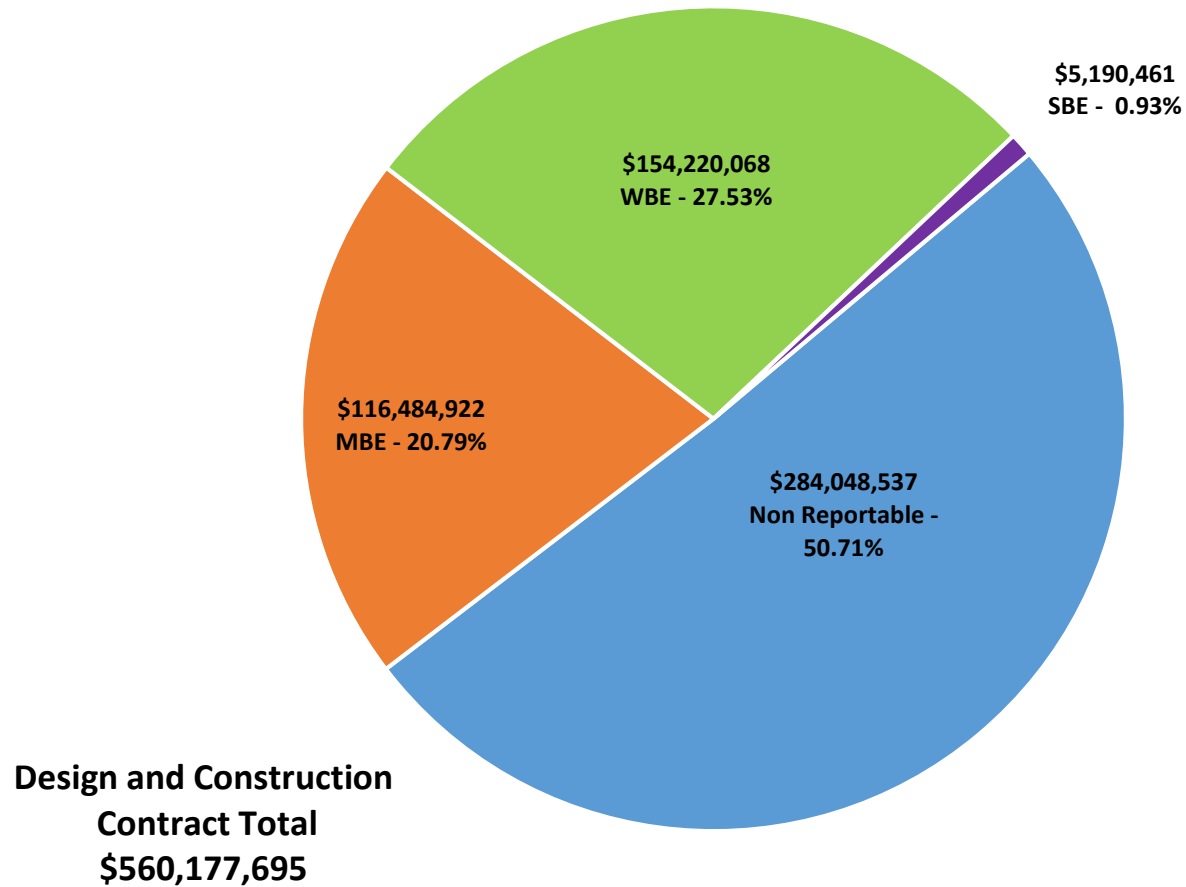
2017 Bond Projects

July 2021 Monthly Bond Report

Facility	Contract Amount	African American MBE\$	%	Other MBE \$	%	Total MBE \$	%	Other WBE \$	%	Other SBE \$	%	Total	%
<u>Briarwood Elementary School (17)</u>	\$28,696,836	\$4,012,492	13.98%	\$2,424,277	8.45%	\$6,436,769	22.43%	\$1,899,556	6.62%	\$152,902	0.53%	\$8,489,227	29.58%
<u>Career and Technology Education (17)</u>	\$5,909,090	\$666,147	11.27%	\$336,382	5.69%	\$1,002,529	16.97%	\$214,326	3.63%	\$35,485	0.60%	\$1,252,340	21.19%
<u>Charlotte-Mecklenburg Academy (17)</u>	\$17,035,852	\$198,536	1.17%	\$1,029,192	6.04%	\$1,227,728	7.21%	\$872,755	5.12%	\$13,200	0.08%	\$2,113,683	12.41%
<u>Collinswood Language Academy (17)</u>	\$38,551,189	\$649,287	1.68%	\$1,613,103	4.18%	\$2,262,390	5.87%	\$11,362,566	29.47%	\$9,328	0.02%	\$13,634,284	35.37%
<u>E.E. Waddell (17)</u>	\$152,000	\$0	0.00%	\$0	0.00%	\$0	0.00%	\$10,950	7.20%	\$0	0.00%	\$10,950	7.20%
<u>East Mecklenburg High School (17)</u>	\$12,495,074	\$627,648	5.02%	\$535,415	4.29%	\$1,163,063	9.31%	\$490,382	3.92%	\$681,075	5.45%	\$2,334,521	18.68%
<u>Garinger High School (17)</u>	\$4,212,784	\$49,330	1.17%	\$412,572	9.79%	\$461,902	10.96%	\$165,433	3.93%	\$0	0.00%	\$627,335	14.89%
<u>Harding High School (17)</u>	\$13,005,626	\$1,504,505	11.57%	\$310,356	2.39%	\$1,814,862	13.95%	\$3,846,831	29.58%	\$176	0.00%	\$5,661,869	43.53%
<u>JT Williams (17)</u>	\$1,180,500	\$2,000	0.17%	\$20,000	1.69%	\$22,000	1.86%	\$0	0.00%	\$0	0.00%	\$22,000	1.86%
<u>Lansdowne Elementary School (17)</u>	\$30,617,679	\$33,367	0.11%	\$142,400	0.47%	\$175,767	0.57%	\$206,632	0.67%	\$223,625	0.73%	\$606,024	1.98%
<u>Lincoln Heights Elementary School (17)</u>	\$432,426	\$92,274	21.34%	\$18,800	4.35%	\$111,074	25.69%	\$0	0.00%	\$74,503	17.23%	\$185,577	42.92%
<u>Montclair Elementary School (17)</u>	\$26,201,789	\$3,431,781	13.10%	\$2,260,381	8.63%	\$5,692,162	21.72%	\$5,669,308	21.64%	\$517,041	1.97%	\$11,878,510	45.33%
<u>Mountain Island Lake Academy (17)</u>	\$777,565	\$0	0.00%	\$0	0.00%	\$0	0.00%	\$0	0.00%	\$0	0.00%	\$0	0.00%
<u>New Elementary School (Bain, Leban)</u>	\$26,301,565	\$4,421,430	16.81%	\$19,078,950	72.54%	\$23,500,380	89.35%	\$1,233,970	4.69%	\$309,180	1.18%	\$25,043,530	95.22%
<u>New Elementary School (Elon, Hawk)</u>	\$1,937,105	\$0	0.00%	\$0	0.00%	\$0	0.00%	\$60,490	3.12%	\$0	0.00%	\$60,490	3.12%
<u>New Elementary School (Hidden Vall)</u>	\$2,026,823	\$0	0.00%	\$99,674	4.92%	\$99,674	4.92%	\$21,200	1.05%	\$25,900	1.28%	\$146,774	7.24%
<u>New Elementary School (Windsor, W)</u>	\$2,056,620	\$1,456,670	70.83%	\$258,000	12.54%	\$1,714,670	83.37%	\$165,750	8.06%	\$0	0.00%	\$1,880,420	91.43%
<u>New High School (17) (Olympic Relief)</u>	\$98,154,986	\$13,332,333	13.58%	\$4,090,024	4.17%	\$17,422,357	17.75%	\$8,455,618	8.61%	\$766,550	0.78%	\$26,644,525	27.15%
<u>New High School (South, Ardrey) (17)</u>	\$6,554,275	\$13,500	0.21%	\$91,000	1.39%	\$104,500	1.59%	\$556,340	8.49%	\$28,625	0.44%	\$689,465	10.52%
<u>North Academy of World Languages</u>	\$38,265,523	\$1,964,711	5.13%	\$1,909,480	4.99%	\$3,874,191	10.12%	\$4,583,546	11.98%	\$420,199	1.10%	\$8,877,936	23.20%
<u>Northwest School of the Arts (17)</u>	\$115,000	\$0	0.00%	\$0	0.00%	\$0	0.00%	\$0	0.00%	\$0	0.00%	\$0	0.00%
<u>Shamrock Gardens Elementary Scho</u>	\$27,979,335	\$1,994,651	7.13%	\$1,468,047	5.25%	\$3,462,698	12.38%	\$22,855,861	81.69%	\$281,734	1.01%	\$26,600,293	95.07%
<u>Sharon Elementary School (17)</u>	\$8,506,756	\$279,813	3.29%	\$338,766	3.98%	\$618,579	7.27%	\$1,333,460	15.68%	\$212,624	2.50%	\$2,164,664	25.45%
<u>South Academy of International Lang</u>	\$37,685,622	\$5,636,216	14.96%	\$2,375,163	6.30%	\$8,011,379	21.26%	\$10,750,837	28.53%	\$347,799	0.92%	\$19,110,015	50.71%

Facility	Contract Amount	African American MBE\$	%	Other MBE \$	%	Total MBE \$	%	Other WBE \$	%	Other SBE \$	%	Total	%
<u>South Pine Academy</u>	\$26,415,366	\$916,165	3.47%	\$18,870,841	71.44%	\$19,787,006	74.91%	\$4,887,125	18.50%	\$238,129	0.90%	\$24,912,261	94.31%
<u>West Charlotte High School (17)</u>	\$94,957,318	\$15,116,534	15.92%	\$1,519,700	1.60%	\$16,636,234	17.52%	\$72,580,016	76.43%	\$562,104	0.59%	\$89,778,354	94.55%
<u>West Mecklenburg High School (17)</u>	\$9,952,990	\$393,254	3.95%	\$489,754	4.92%	\$883,008	8.87%	\$1,997,115	20.07%	\$290,283	2.92%	\$3,170,406	31.85%
Grandtotal	\$560,177,695	\$56,792,645	10.14%	\$59,692,277	10.66%	\$116,484,922	20.79%	\$154,220,068	27.53%	\$5,190,461	0.93%	\$275,895,452	49.25%

MWSBE Participation 2017 Bond Projects



PROJECT CONTROLS

CHARLOTTE-MECKLENBURG BOARD OF EDUCATION
2013 BOND SERIES-CAPITAL IMPROVEMENT PROGRAM
BUDGET STATUS REPORT

	Original Project Budget	Current Project Budget	Committed Amount	Approved Change Orders	Total Committed	Pending Commitments	To Be Committed	Prev Paid To Date	Paid To Date	Balance To Complete	Monthly Expenditure
	(A)	(B)	(C)	(D)	(E)=C+D	(F)	(G)=(B-E-F)	(H)	(I)	(J)=(B-I)	(K)=(I-H)
<u>A. REPLACEMENT & RENOVATIONS</u>											
1 Career & Technology Education Institutes Phase 1:	\$8,640,000	\$18,256,861	\$7,064,749	\$11,192,112	\$18,256,861	\$0	\$0	\$7,331,747	\$7,345,753	\$10,911,108	\$14,006
2 Davidson K-8 Conversion	\$9,500,000	\$13,610,000	\$2,130,689	\$11,364,591	\$13,495,280	\$0	\$114,720	\$13,455,637	\$13,460,403	\$149,597	\$4,766
3 J.M. Alexander Middle Replacement	\$30,672,000	\$29,845,539	\$4,502,518	\$25,343,021	\$29,845,539	\$0	\$0	\$29,845,539	\$29,845,539	\$0	\$0
4 Nations Ford Elementary Replacement	\$19,440,000	\$19,231,603	\$3,958,869	\$15,272,733	\$19,231,603	\$0	\$0	\$19,231,604	\$19,231,604	\$0	\$0
5 Northwest School of the Arts	\$12,420,000	\$12,868,718	\$2,047,917	\$10,820,801	\$12,868,718	\$0	\$0	\$12,868,719	\$12,868,719	\$0	\$0
6 Oakhurst STEAM Magnet Elementary/Starmount	\$5,940,000	\$5,407,812	\$3,471,397	\$1,936,415	\$5,407,812	\$0	\$0	\$5,407,812	\$5,407,812	\$0	\$0
7 Pre-K-8 Conversions Phase II: Ashley Park/ Bruns	\$24,732,000	\$19,791,457	\$4,167,669	\$15,563,538	\$19,731,207	\$0	\$60,250	\$19,700,807	\$19,700,807	\$90,650	\$0
8 Selwyn Elementary	\$2,592,000	\$4,687,004	\$744,378	\$3,881,906	\$4,626,284	\$0	\$60,720	\$4,624,831	\$4,624,831	\$62,172	\$0
9 Statesville Road Elementary	\$20,340,000	\$20,648,510	\$5,081,473	\$15,567,037	\$20,648,509	\$0	\$0	\$20,648,509	\$20,648,509	\$0	\$0
Total Replacement & Renovations	\$134,276,000	\$144,347,503	\$33,169,659	\$110,942,154	\$144,111,813	\$0	\$235,690	\$133,115,205	\$133,133,977	\$11,213,526	\$18,772
<u>B. RESPONSE TO ENROLLMENT GROWTH</u>											
1 East Mecklenburg High Addition	\$12,744,000	\$10,988,287	\$3,369,684	\$7,618,603	\$10,988,287	\$0	\$0	\$10,988,287	\$10,988,287	\$0	\$0
2 Myers Park High Addition	\$22,248,000	\$11,070,580	\$1,207,493	\$9,833,448	\$11,040,942	\$0	\$29,639	\$11,040,941	\$11,040,941	\$29,639	\$0
3 Northridge Middle Addition	\$6,448,000	\$6,366,170	\$2,114,306	\$4,251,865	\$6,366,171	\$0	\$0	\$6,366,171	\$6,366,171	\$0	\$0
4 Olympic High Addition/Renovation	\$8,964,000	\$8,947,310	\$2,002,694	\$6,944,615	\$8,947,310	\$0	\$0	\$8,947,310	\$8,947,310	\$0	\$0
5 South Mecklenburg High Addition	\$18,360,000	\$16,307,355	\$2,922,282	\$13,385,073	\$16,307,355	\$0	\$0	\$16,307,355	\$16,307,355	\$0	\$0
6 Charlotte East Language Academy (FKA -New Lang	\$30,376,000	\$31,456,414	\$5,740,242	\$25,692,685	\$31,432,927	\$0	\$23,487	\$31,387,929	\$31,387,929	\$68,485	\$0
7 Rea Farms STEAM Academy	\$31,376,000	\$40,476,000	\$9,134,265	\$30,214,465	\$39,348,729	\$52,310	\$1,074,961	\$38,164,219	\$38,178,645	\$2,297,355	\$14,426
8 Renaissance West STEAM Academy (FKA New Pre-	\$30,376,000	\$31,740,150	\$5,667,328	\$26,072,822	\$31,740,150	\$0	\$0	\$31,698,952	\$31,698,952	\$41,199	\$0
Total Response to Enrollment Growth	\$160,892,000	\$157,352,267	\$32,158,295	\$124,013,576	\$156,171,871	\$52,310	\$1,128,087	\$154,901,164	\$154,915,589	\$2,436,678	\$14,426
<u>C. CONTINGENCY</u>											
	\$0	\$0	\$0	\$0	\$0	\$0	\$0	\$0	\$0	\$0	\$0
Total Contingency	\$0	\$0	\$0	\$0	\$0	\$0	\$0	\$0	\$0	\$0	\$0
TOTAL LOCAL BOND PROGRAM	\$295,168,000	\$301,699,771	\$65,327,954	\$234,955,730	\$300,283,684	\$52,310	\$1,363,777	\$288,016,369	\$288,049,566	\$13,650,204	\$33,197

Original project estimated costs approved by the Board Of Education on July 23, 2013 and approved by the voters of Mecklenburg County on November 5, 2013.

Note: Mecklenburg County's appropriated interest from COPS to increase funding for the 2013 Bond Program.

CHARLOTTE-MECKLENBURG BOARD OF EDUCATION
2017 BOND SERIES-CAPITAL IMPROVEMENT PROGRAM
BUDGET STATUS REPORT

	Original Project Budget	Current Project Budget	Committed Amount	Approved Change Orders	Total Committed	Pending Commitments	To Be Committed	Prev Paid To Date	Paid To Date	Balance To Complete	Monthly Expenditure
	(A)	(B)	(C)	(D)	(E)=C+D	(F)	(G)=(B-E-F)	(H)	(I)	(J)=(B-I)	(K)=(I-H)
A. REPLACEMENT & RENOVATIONS											
1 Briarwood Elementary *	\$29,091,619	\$31,962,730	\$4,943,133	\$26,609,642	\$31,552,775	\$62,718	\$347,237	\$22,538,632	\$23,912,597	\$8,050,133	\$1,373,965
2 Bruns Academy Replacement	\$34,207,808	\$39,784,927	\$1,433,024	\$218,050	\$1,651,074	\$0	\$38,133,853	\$0	\$0	\$39,784,927	\$0
3 Career & Technology Education Upgrades	\$10,101,734	\$10,159,765	\$2,279,811	\$4,093,502	\$6,373,313	\$0	\$3,786,452	\$1,200,674	\$1,242,408	\$8,917,357	\$41,734
4 Collinswood K-8 *	\$44,172,540	\$42,272,540	\$5,010,866	\$36,706,773	\$41,717,639	\$0	\$554,901	\$41,371,394	\$41,374,986	\$897,554	\$3,591
5 East Mecklenburg HS	\$12,771,594	\$15,058,594	\$1,789,653	\$11,387,595	\$13,177,248	(\$6,960)	\$1,888,306	\$2,189,836	\$2,952,507	\$12,106,087	\$762,671
6 Garinger HS	\$13,936,979	\$14,486,979	\$1,464,657	\$3,475,359	\$4,940,016	\$0	\$9,546,963	\$197,393	\$197,682	\$14,289,297	\$288
7 Harding University High *	\$18,330,263	\$14,530,263	\$2,048,751	\$11,712,323	\$13,761,074	\$50,000	\$719,189	\$13,532,916	\$13,532,916	\$997,347	\$0
8 Charlotte-Mecklenburg Academy (FKA -EC Specialty	\$18,957,960	\$18,079,506	\$2,175,504	\$15,790,598	\$17,966,102	\$2,665	\$110,739	\$17,699,220	\$17,699,220	\$380,286	\$0
9 Lansdowne Elementary	\$29,391,270	\$37,128,834	\$4,138,915	\$28,400,521	\$32,539,436	\$0	\$4,589,398	\$5,141,107	\$7,671,571	\$29,457,263	\$2,530,464
10 Lincoln Heights Elementary	\$3,740,478	\$4,588,675	\$577,649	\$26,774	\$604,423	\$0	\$3,984,252	\$383,738	\$383,738	\$4,204,937	\$0
11 Montclair Elementary Replacement *	\$28,559,390	\$28,559,390	\$2,439,652	\$26,056,957	\$28,496,608	\$0	\$62,782	\$27,459,420	\$27,467,877	\$1,091,513	\$8,457
12 Mountain Island k-8	\$9,218,439	\$10,488,400	\$1,274,435	\$0	\$1,274,435	\$0	\$9,213,965	\$0	\$0	\$10,488,400	\$0
13 Northwest School of the Arts	\$17,632,202	\$20,467,000	\$846,736	\$117,644	\$964,380	\$0	\$19,502,620	\$0	\$0	\$20,467,000	\$0
14 Shamrock Gardens Elementary *	\$29,890,351	\$35,358,351	\$3,666,266	\$26,053,763	\$29,720,029	\$23,855	\$5,614,467	\$7,175,914	\$8,506,026	\$26,852,325	\$1,330,112
15 Sharon Elementary	\$7,706,528	\$9,475,862	\$1,476,458	\$7,659,186	\$9,135,644	\$29,689	\$310,529	\$8,094,448	\$8,281,401	\$1,194,461	\$186,953
16 South Mecklenburg HS	\$13,352,143	\$15,622,927	\$554,114	\$94,238	\$648,352	\$0	\$14,974,575	\$0	\$2,362	\$15,620,565	\$2,362
17 E.E. Waddell Magnet HS	\$4,571,709	\$5,137,367	\$341,726	\$0	\$341,726	\$0	\$4,795,641	\$26,045	\$39,575	\$5,097,792	\$13,530
18 West Charlotte HS Replacement	\$109,977,166	\$109,977,166	\$11,886,180	\$88,181,557	\$100,067,737	\$123,905	\$9,785,524	\$47,453,893	\$50,912,578	\$59,064,588	\$3,458,686
19 West Mecklenburg HS	\$11,065,440	\$10,850,902	\$1,659,336	\$8,814,308	\$10,473,643	\$26,292	\$350,967	\$8,122,092	\$8,717,987	\$2,132,915	\$595,895
20 John Taylor Williams	\$13,964,339	\$15,732,600	\$1,760,020	\$0	\$1,760,020	\$0	\$13,972,580	\$0	\$0	\$15,732,600	\$0
Total Replacement & Renovations	\$460,639,952	\$489,722,778	\$51,766,886	\$295,398,789	\$347,165,674	\$312,165	\$142,244,939	\$202,586,722	\$212,895,431	\$276,827,347	\$10,308,709
B. RESPONSE TO ENROLLMENT GROWTH											
1 South Academy of International Languages	\$45,359,367	\$42,959,367	\$6,107,039	\$35,673,741	\$41,780,780	\$0	\$1,178,587	\$38,382,532	\$38,918,575	\$4,040,792	\$536,043
2 North Academy of World Languages (FKA - New K-8	\$45,359,367	\$43,359,367	\$6,312,742	\$35,913,137	\$42,225,879	\$761	\$1,132,727	\$38,293,671	\$39,889,211	\$3,470,156	\$1,595,541
3 South Pine Academy (FKA - New ES Nations Ford,	\$29,173,829	\$31,572,550	\$6,853,132	\$24,425,881	\$31,279,013	\$93,753	\$199,783	\$23,805,581	\$26,070,970	\$5,501,580	\$2,265,389
4 New Elementary School - Bain/Lebanon Relief	\$29,988,332	\$31,455,951	\$3,379,759	\$24,530,000	\$27,909,759	\$0	\$3,546,192	\$2,317,663	\$2,898,574	\$28,557,377	\$580,912
5 New Elementary School - Windsor Park Relief *	\$30,422,230	\$37,197,022	\$3,279,093	\$177,404	\$3,456,497	\$0	\$33,740,525	\$224,663	\$314,736	\$36,882,286	\$90,073
6 New Elementary School - Elon/Hawk Ridge Relief *	\$30,426,712	\$43,476,676	\$13,972,071	\$47,300	\$14,019,371	\$0	\$29,457,304	\$11,207,113	\$11,208,453	\$32,268,223	\$1,340
7 New Elementary School - Hidden Valley Relief	\$30,518,345	\$34,697,022	\$4,127,781	\$218,375	\$4,346,156	\$0	\$30,350,866	\$1,369,031	\$1,476,728	\$33,220,294	\$107,698
8 New High School - Olympic Relief	\$109,908,793	\$109,908,793	\$11,317,821	\$91,828,509	\$103,146,330	\$154,385	\$6,608,079	\$51,327,523	\$55,685,494	\$54,223,299	\$4,357,972
9 New High School - South Meck/Ardrey Kell Relief *	\$110,287,621	\$154,930,460	\$11,244,255	\$711,379	\$11,955,634	\$0	\$142,974,826	\$2,964,293	\$3,021,055	\$151,909,405	\$56,763
Total Response to Enrollment Growth	\$461,444,596	\$529,557,208	\$66,593,694	\$213,525,726	\$280,119,420	\$248,899	\$249,188,889	\$169,892,068	\$179,483,797	\$350,073,411	\$9,591,729
C. CONTINGENCY											
	\$0	\$0	\$0	\$0	\$0	\$0	\$0	\$0	\$0	\$0	\$0
Total Contingency	\$0	\$0	\$0	\$0	\$0	\$0	\$0	\$0	\$0	\$0	\$0

CHARLOTTE-MECKLENBURG BOARD OF EDUCATION
2017 BOND SERIES-CAPITAL IMPROVEMENT PROGRAM
BUDGET STATUS REPORT

	Original Project Budget	Current Project Budget	Committed Amount	Approved Change Orders	Total Committed	Pending Commitments	To Be Committed	Prev Paid To Date	Paid To Date	Balance To Complete	Monthly Expenditure
	(A)	(B)	(C)	(D)	(E)=C+D	(F)	(G)=(B-E-F)	(H)	(I)	(J)=(B-I)	(K)=(I-H)
TOTAL LOCAL BOND PROGRAM	\$922,084,548	\$1,019,279,985	\$118,360,579	\$508,924,515	\$627,285,094	\$561,064	\$391,433,828	\$372,478,790	\$392,379,228	\$626,900,758	\$19,900,438

Original project estimated costs approved by the Board Of Education on July 25, 2017 approved by the voters of Mecklenburg County on November 7, 2017.

*Project included in \$33.2M early funding approved by Board Of Education on August 9, 2016 and Mecklenburg Board of County Commissioners on September 6, 2016. On February 19, 2019 an additional \$8M was approved for New Elementary School - Elon/Hawk Ridge Relief site.

*Current Budget includes an additional \$89.2M to fund increase land and construction costs. The additional funds were approved by the Board of County Commissioners on June 16, 2020.

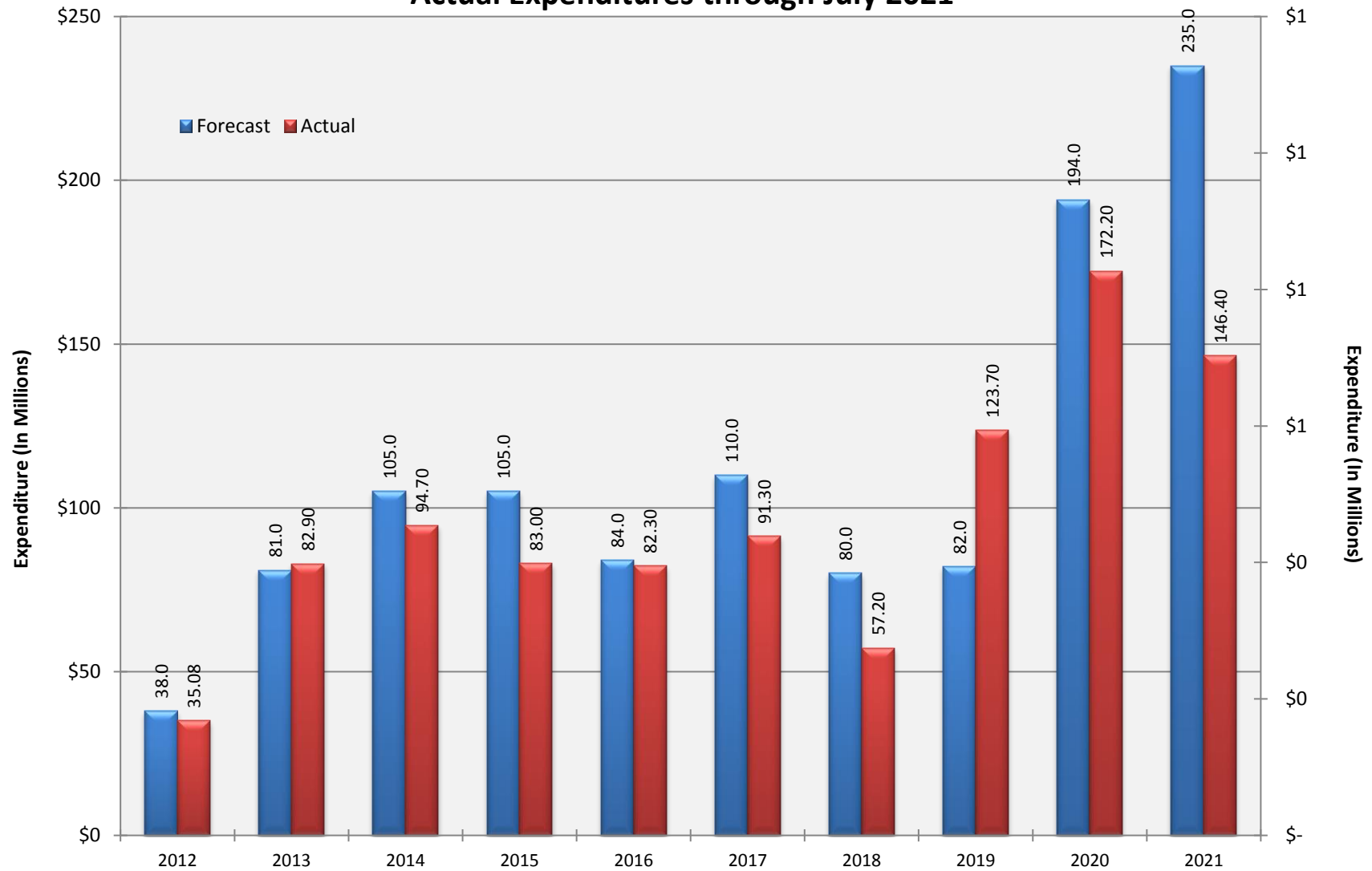
Charlotte-Mecklenburg Board of Education
Approved Construction or Repair Change Orders*
Reporting Period: July 2021

Funding Source	Project Name	Contractor	Description	Change Order Amount	Revised Contract Value
2017 Bond	East Mecklenburg High School (17)	Turner Construction Company	Increase Unsuitable Soil Allowance for Additional Work Anticipated at the Building Pad.	\$85,596.76	\$11,373,683.68

* Not previously presented to the Board of Education for Approval (less than \$90,000)

10 YEAR EXPENDITURE SUMMARY

Forecast Expenditure versus
Actual Expenditures through July 2021



GLOSSARY

Glossary

- **Project Management** – This section includes updates from our project managers and describes the currently active construction projects. This includes from Board of Education award thru final completion.
- **Design and Bidding** – This section contains updates from our design managers on the projects currently in the design phase. This phase from design award to Board of Education award of construction.
- **Controls** – Section includes misc. updates from controls group including expenditures, related Board of Education awards during the reporting period, cash flow information. This section covers all projects from approved bond through final expenditures and bond close with the county.
- **MWSBE** – Contains updates from the MWSBE Director and team, including current activity and summaries of the participation by MWSBE providers on our program.
- **Bond Progress Summary** – Provides a summary of bond financials including bond value, committed/pending amounts, paid to date, expended this month.
- **Project Procurement Dates** - Next 90 Days major project bid activity.
- **Mobile Swing Space Utilization** – Includes a summary of program related swing space currently in use and the schedule of use.
- **Bond Summary Schedule** – Current program summary schedule including planned design, construction and FF&E. These activities are fed from detailed schedules and are fine-tuned as project information is available.
- **Project Contractor Teams**; Provides summary of turnover dates for completed/closed projects since 2010 including architects/designers and contractors.
- **School Site Location Maps** – General location of bond projects (2017) by type.
- **Project Status Report** – This section of the report provides a summary of the bond project scope, current estimate (all sources), planned occupancy/actual occupancy date. It also provides a current status of the design phase, construction progress and a brief update. The report currently includes 2013 and 2017 bond projects that have or will be completed after to August 2016.
- **MWSBE Participation Report** – The MWSBE report provides a summary of the participation on the 2013 & 2017 Bond funded projects.
- **Project Progress Photos** – Includes photos of active construction projects.
- **Budget Summary Reports** – These reports are by funding source and summarize financial activity to date on the projects. This includes original and current project estimates, committed values, amounts paid to date, balances and monthly expenditures.
- **Change Orders < \$90,000** – This month's approved construction or repair change orders < \$90,000.
- **Expenditure Summary** – Provides a summary of Bond Expenditures by calendar year.