

Capital Improvement Program

Monthly Bond Report June 2021



Shamrock Gardens Elementary School



CAPITAL PROGRAM SERVICES Capital Improvement Program

JUNE 2021 **MONTHLY BOND REPORT**

PROGRAM OVERVIEW

- Project Management
- Design and Bidding
- Controls
- MWSBE
- Bond Progress Summary
- Project Procurement - Next 90 Days
- Swing Space Utilization
- Bond Summary Schedule
- Project Contractor Teams; Projects in Design/Construction and Substantially Completed/Closed
- School Site Location Maps
 - Elementary Schools
 - Middle Schools
 - High Schools & Specialty Schools

PROJECT STATUS REPORT

MWSBE PARTICIPATION REPORT

PROJECT PROGRESS PHOTOS

PROJECT CONTROLS

- Budget Summary Reports
 - 2013 Bond Series
 - 2017 Bond Series
- Change Orders < \$90,000
- Expenditure Summary

GLOSSARY

PROGRAM OVERVIEW

PROJECT MANAGEMENT

The following is a summary of the activity on the bond funded projects in construction during the month of June.

The construction manager for the **Briarwood Elementary Replacement School** continued with final finishes throughout the building including final paint, tack boards, marker boards, accessories, and security and camera systems. The administration area saw final wall point up and installation of intercom and security devices. The media center final paint and marker boards were completed. The main lobby progressed with the specialized ceilings, guardrails and VCT. Cafeteria and multi-purpose VCT was installed and final paint was completed. The exterior sod and fencing was completed along with the ground covering for the tree save area. The mobile classrooms were relocated which allowed the phased asphalt entrance to begin. The 45-classroom replacement school is scheduled to be occupied in August 2021. Upon completion, demolition and remaining site work will commence and be completed in 2022.

The **CTE projects** at **Harding, South Mecklenburg** and **Olympic** construction manager has mobilized on site and has erected the construction isolation fencing and secured the lay-down areas. The selective demolition is underway and submittals for equipment and materials are being reviewed by the architect and engineers. Harding and South Mecklenburg have new bathrooms that are focus points for the summer to provide use in late August. The Harding project consists of renovations to existing classrooms in the auditorium building to develop a suite of technology classrooms. The project at Olympic includes electrical up fits to the existing carpentry lab which expands the curriculum to include demonstration learning booths for plumbing and electrical trades. The project at South Mecklenburg consists of renovating the old kitchen area into a culinary arts lab and classroom. Occupancy for Harding and Olympic is scheduled for August 2021. South Mecklenburg is scheduled for January 2022.

The construction manager for **East Mecklenburg High School** has started pouring the slab on grade as footing and foundation walls are complete. The underground infrastructure to support the new building is also being coordinated with the public utilities. The existing primary power line feeding the 500 Building is scheduled to be relocated as part of the project but delays with Duke Energy have impacted the schedule. The next phase of the project will not be able to start until the line is relocated. The project team is working through supply chain logistics and issues with material availability. In some cases, product substitutions are being considered to maintain overall construction schedule. The new classroom wing is scheduled for occupancy in August 2022.

The **Garinger Addition and Renovation** construction project was approved by the Board of Education in June. The construction manager began mobilization and submission of submittals for the project. The addition is scheduled to be occupied August of 2022 and the renovation to be occupied in January of 2023.

The **Lansdowne Elementary School** construction manager continues to dig and pour perimeter building footings. They will be pouring the slab on grade in phases as underground electrical and plumbing rough-ins are completed. The underground storm water detention pipes have been delivered and installation is ongoing. The project team is working through supply chain logistics and issues with material availability. In some cases, product substitutions are being considered to maintain overall construction schedule. The existing school sanitary sewer lines are being rerouted around the current construction area. Occupancy of the replacement school is scheduled for August 2022. Upon completion of the new building, demolition and remaining site work will commence and will be completed in 2023.

The construction manager for the **Montclair Elementary School** installed all the islands and site lighting on the project including the new staff and bus lot. The play field was sodded and seeding was installed in the remaining areas. The new entrance to the staff lot was installed and the bus lot entrance will be completed next month. The conversion to a sand filter started in pond 1 and pond 2 will follow. The new 45-classroom elementary school building has been occupied. The remaining site work is being completed.

The **New Elementary School (Bain, Lebanon, Piney Grove Relief)** project's construction manager has completed the perimeter erosion control and isolation fencing. They have moved into clearing and grading. The temporary storm water pond has been dug and reviewed by NCDEQ. New building corners have been staked and work has started to get the building pad on grade. This new 45-classroom school will be located next to the existing Mint Hill Middle School. The project is scheduled for occupancy in August 2022.

The construction manager for the **New High School Olympic Relief** progressed throughout the building with exterior and interior metal studs and drywall installations. The mechanical, electrical and plumbing trades continued with above ceiling and in wall rough in while focusing on work in the mechanical and electrical rooms. The pool contractor continued excavating the pool to begin underground plumbing and electrical. Site work continued on the athletic fields and erosion control throughout the site. The 100-classroom relief high school is scheduled to be occupied in August 2022.

The construction manager for the **North Academy of World Languages** (*fka New K-8 Language Immersion North*) project has achieved the temporary certificate of occupancy. The new booster pump for the fire sprinkler system has been installed and passed required inspections. The FF&E deliveries got started in June. The Hambright Road improvements are completed awaiting final zoning and NCDOT inspections. The existing track and field resurfacing project is complete and athletic striping is finalized. The construction manager will be completing any punch list items identified by the architect and engineers. The project is scheduled to be occupied August 2021.

The **Shamrock Gardens Elementary School** construction manager completed the lime stabilization in the parking lots and loop roads. Curb and gutter installation began along with completing the storm and starting the fire and domestic water lines. CMU walls continued exterior and interior along with the MEP rough-ins in wall and below grade. Installation of structural steel continued and is expected to be complete in July. The new 45-classroom replacement elementary school is scheduled to be occupied August 2022.

The construction manager for the **Sharon Elementary School Building Addition** has achieved substantial completion for the new classroom wing and the cafeteria expansion. The building occupancy approvals have been granted. The FF&E started in June with new classroom furniture arriving. The construction manager is actively completing any open punch list items generated by the architect and engineers. Occupancy of the 16-classroom addition and cafeteria expansion is scheduled for August 2021.

The construction manager for the **South Academy of International Languages** (*Fka New K-8 Language Immersion South*) worked diligently on the punch list and commissioning items and has the list down to a minimal amount. FF&E began mid-April and the staff has moved in. The project is scheduled to be occupied August 2021.

The **South Pine Academy** (*fka New Elementary School (Nations, Sterling, Steele Creek Relief)*) construction manager has worked through material delays on some of the finish products, casework and miscellaneous specialties. The building systems are being programmed to allow functional testing to occur and final inspections by the code officials. The architect started the punch list for substantial completion. The new 45-classroom relief elementary school is scheduled to be occupied August of 2021.

The **West Charlotte High School** construction manager's trade contractors continue to work throughout the facility. The crews are working from rough-ins to interior finishes. The roof is installed in areas allowing progress to continue and in other areas the roof installation continues. The exterior of the building is finalized in some areas while brick veneer and exterior metal wall panels are being completed at others. The swimming pool excavation is progressing. The athletic buildings have moved into interior finishes. The site contractor is working on curb and gutter and prepping areas for paving. The project team is working through supply chain logistics and issues with material

availability. In some cases, product substitutions are being considered to maintain overall construction schedule. The project is scheduled to be occupied August 2022. Once the new school is occupied the existing school will be demolished and final site work will take place with final project completion in August 2023.

The **West Mecklenburg High School Gym** construction manager is finalizing the gym wood floor including athletic striping. The interior finishes and school mascot has been installed. Building final clean has also started. The architect and engineers have generated the punch list and sub-contractors are working the off the list. The site paving and concrete hardscapes is nearing completion. Occupancy of the new gymnasium is scheduled for August 2021; the existing gym will then be used as an auxiliary gym.

DESIGN AND BIDDING

The following is a summary of the activity on the bond funded projects in design and bidding phase during the month of June.

The **E.E. Waddell High School** project is currently in the design development phase; coordinating scope with operations on the repurpose project.

The **Mountain Island School** project has progressed into the pre-schematic design phase to include the Architects' pre-schematic design deliverable for CMS review and comments. This project consists of a building addition containing a middle school gymnasium, art, dance and two core classrooms. This project is scheduled to be completed in August 2023.

The **New Elementary School (Elon, Hawk Ridge, Polo Relief)** project is currently in the design development phase. The traffic analysis study and rezoning application are nearing completion and are scheduled to be released to CDOT and Zoning Department in July, 2021. This new 45-classroom school will be located across from the Ardrey Kell High School and is scheduled for occupancy in August 2023.

The **New Elementary School (Hidden Valley, JW Grier, Newell Relief)** project is currently in the design development phase. Development of the traffic analysis study is nearly complete for submission to NCDOT's review and comments. This new 45-classroom school will be located next to Northridge Middle School and is scheduled for occupancy in August 2023.

The **New Elementary School (Windsor, Winterfield, Idlewild Relief)** architect has submitted their schematic design phase deliverable for CMS review and comments. Site acquisition and due diligence activities started at the end of June and will conclude in July. The project is planned to be located on land in the Executive Circle Drive area. This new 45-classroom school facility is scheduled for occupancy in August 2023.

The **New High School (South, Ardrey Kell Relief)** architect has delivered the design development submittal for CMS review and comments. This review period will conclude in early July. CDOT's review and approval of the traffic analysis study continues; official responses are expected in July. Local and state agency meetings with Charlotte Water, Army Corps of Engineers, and others departments continue to be held to progress the project's design. The projects rezoning application is scheduled to be submitted in July. This project consists of a new 100-classroom high school with athletic play fields and stadium.

CONTROLS

Expenditures for the month of June were \$23.2 million. This brings our fiscal year to date total to \$225.5 million against the 2021 fiscal year cash flow projection of \$225 million. The Board of County Commissioners approved the

fiscal year 2022 Capital Project Ordinance on June 15, 2021. The ordinance authorizes the remaining five projects included in the 2017 Bond Program. The Controls team continues the reconciliation and closeout of completed 2013 and 2017 bond projects. Available funding is being accumulated to be used for future capital needs.

Board of Education approval was received on June 22, 2021 for the construction phase for Garinger High School/CTE (17) project.

The Controls team continues to submit notices of potential changes at school sites so senior staff can adequately evaluate any issues. Additionally, the Controls team continues the processing of contracts, invoices, preparing notices of potential change, change orders, pay applications and check requests for projects under construction. Captured construction cost data is used to prepare financial reports such as detailed cost reports, budget summaries, reconciliation to CMS books, revisions to and updated cash flows and complete special financial requests by CMS and Mecklenburg County. This process, along with data compilation and management, allows senior staff to provide the proper guidance/direction and accurate information to the program stakeholders.

MWSBE

As of June 2021 the overall MWSBE utilization percentage related to design and construction of the 2017 bond projects is 48.81% which includes 20.36% participation by minority contractors, 27.48% by women contractors and 0.96% participation by small business contractors. This accounts for more than \$271 million of utilization by Minority, Women and Small Business Contractors.

The Diversity & Inclusion Office of Charlotte-Mecklenburg Schools continued to conduct several individual virtual orientations with new MWSBE contractors and prime contractors. In addition, team members also attended/hosted the following outreach sessions/pre-bid meetings and/or workforce development opportunities:

- Garinger HS – New Building Renovations pre-construction meeting hosted by Balfour Beatty
- United Minority Contractors of North Carolina annual meeting
- Charlotte MED Week 2021 planning meeting

Workforce Development:

CMS Office of Diversity & Inclusion and Capital Program Services will host two (2) CMS student summer interns through the Mayor's Youth Employment Program (MYEP). The interns will participate in virtual project management/design meetings, learn construction/engineering related terms, jobsite safety awareness/COVID-19 requirements, design specifications/submittal review process, interview career industry experts, participate in on-line virtual construction/engineering related simulation courses and complete a project to apply their learnings. The student's college/career related interest will in-form all work-related activities.

Over the next month, team members will continue to work with contractors interested in bidding on the upcoming school projects utilizing various virtual tools to communicate. Contractors are encouraged to review bid advertisements in Charlotte Observer and register as a vendor on the North Carolina Interactive Purchasing System for notification of the various opportunities.

BOND PROGRESS SUMMARY As of June 2021

Funding Source and Value		Amount Committed/Pending	Amount Paid to Date	Amount Expended This Period
'13 Bond	\$301,699,770	\$289,476,962	\$288,016,369	\$699
'17 Bond	\$1,019,279,985	\$623,793,872	\$372,478,490	\$23,180,384
Grand Total	\$1,320,979,755	\$913,270,834	\$660,494,859	\$23,181,083

UPCOMING MAJOR CONSTRUCTION PROCUREMENT DATES *Three Month Look Ahead*

School Name

Bid Dates*

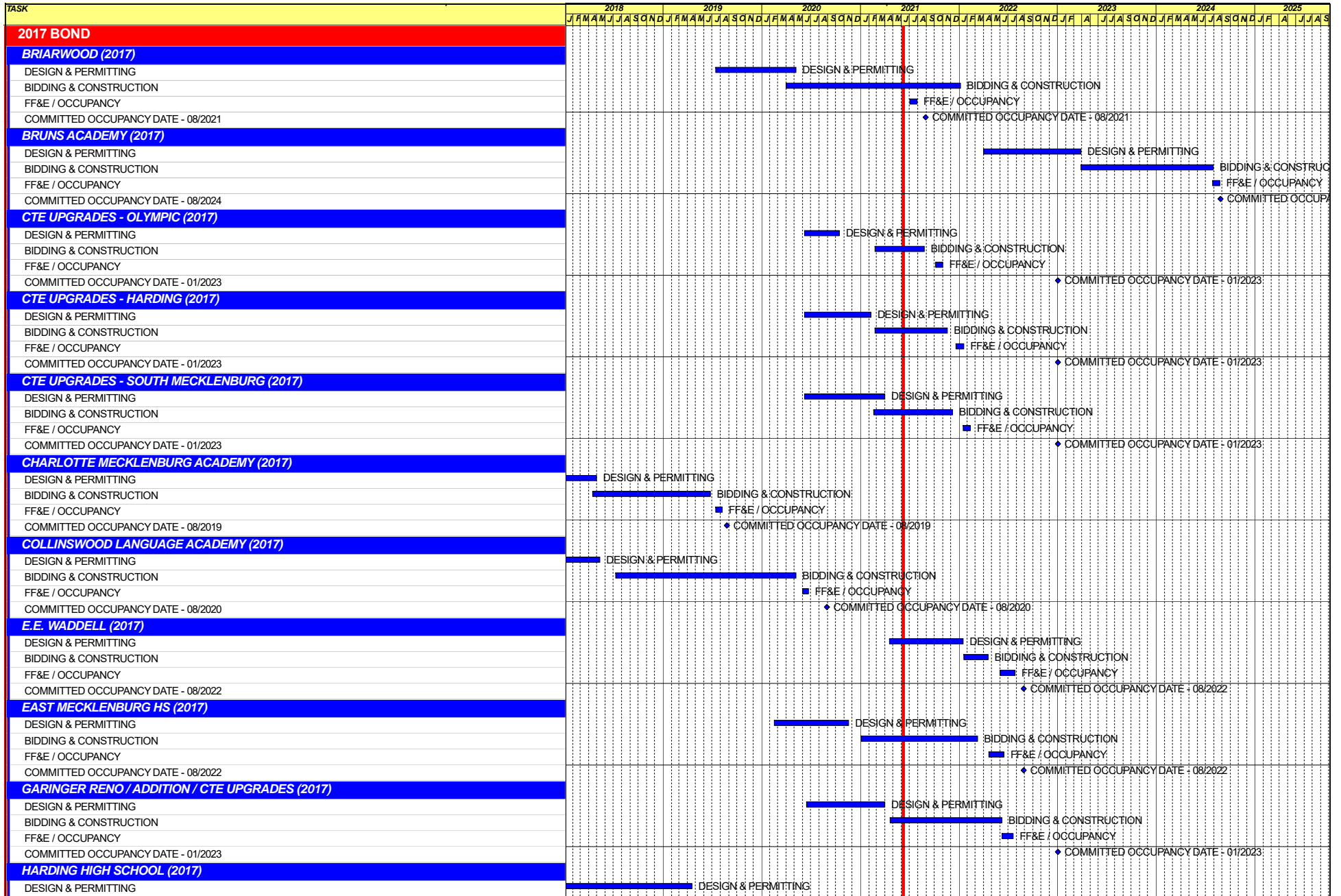
** NOTE: Work In Progress...Dates Subject to Change.*

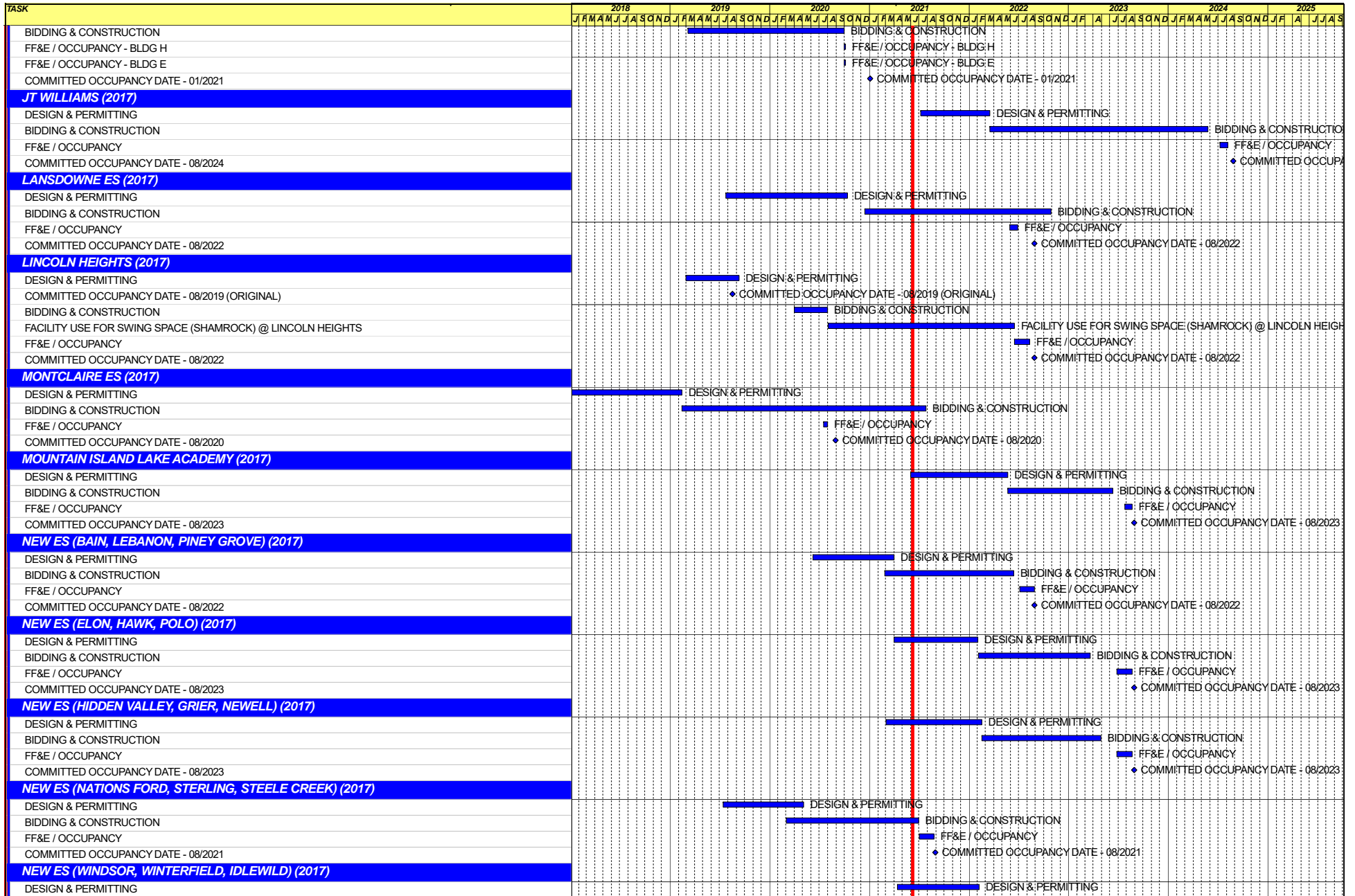
SWING SPACE UTILIZATION

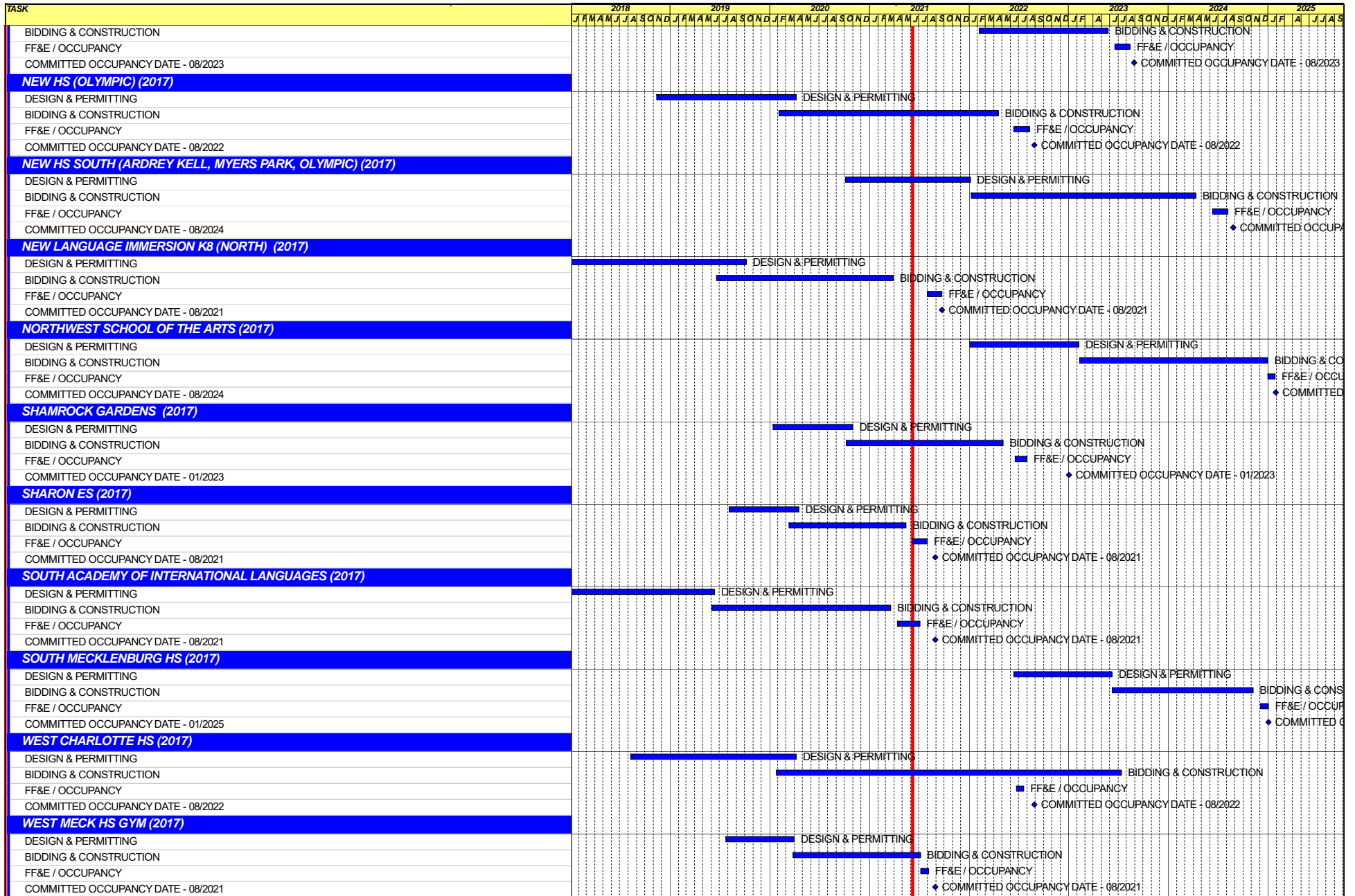
Creating a temporary space for students and staff to occupy during construction on a school’s campus has proven to be beneficial to the project’s schedule and cost and overall safety and efficiency of school operations. When the renovation or expansion of a facility is performed and the facility must remain functionally operational, there are benefits to the owner in using swing space.

We have successfully utilized both onsite and offsite swings. The most desirable swings are “offsite” ones. Onsite swing using mobiles or modulars, likewise has been successfully used. The following is a summary of current swing options planned or in use.

<u>School</u>	<u>No. of Mobiles/Relocation Site</u>	<u>Status (From – To)</u>
Shamrock	Lincoln Heights	August 2020 – August 2022







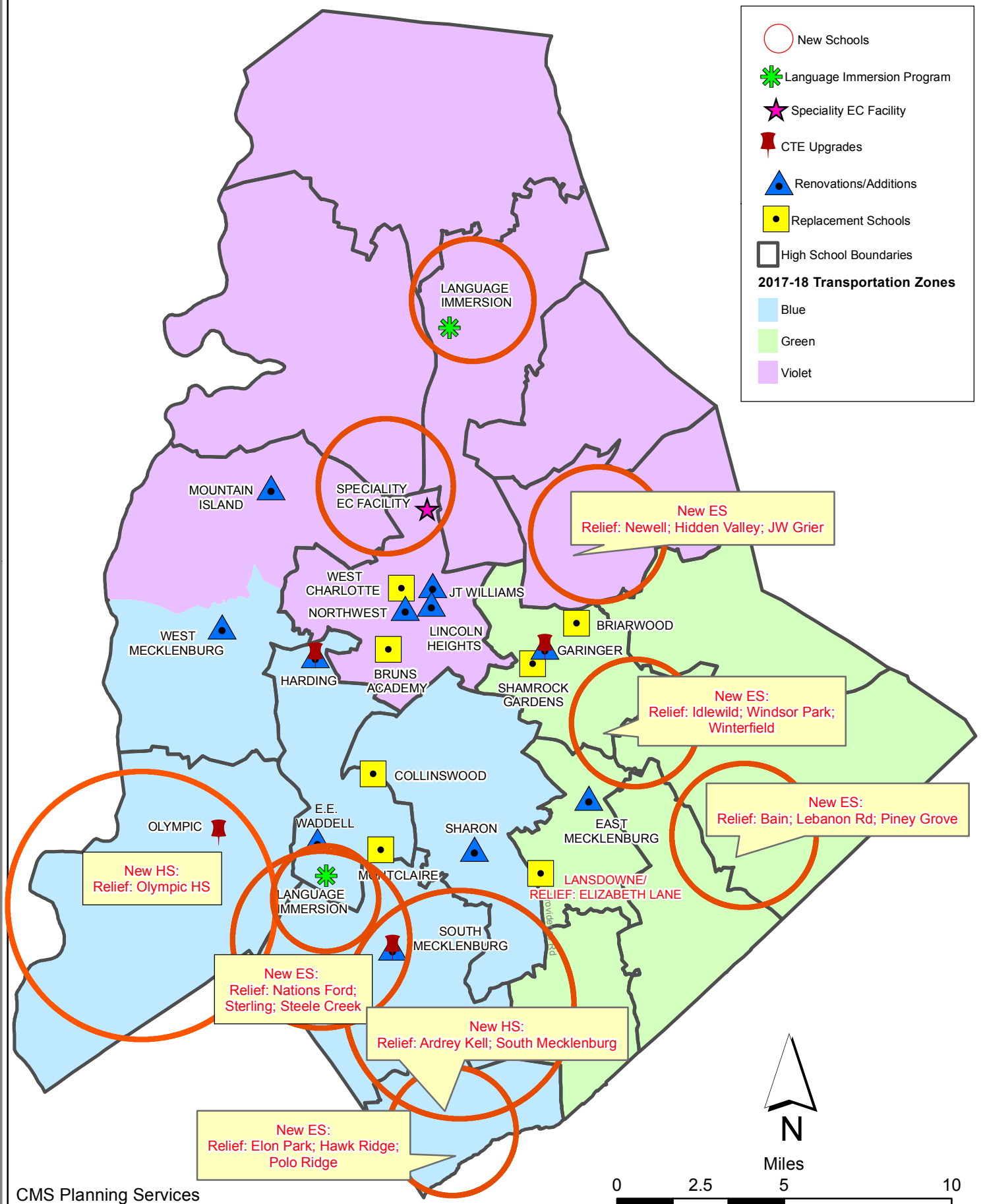
Capital Improvements Program
Projects in Design or Under Construction

School	Architect	General Contractor/CM
Projects In Design		
E.E. Waddell (17)	Moseley	TBD
Lincoln Heights Repurpose (17)	Neighboring Concepts	TBD
Mountain Island School (17)	ADW	Whiting-Turner
New ES (Elon,Hawk Ridge, Polo Ridge) (17)	Little Diversified	Balfour Beatty
New ES (Hidden Valley, JW Grier, Newell) (17)	ADW	Edifice, Inc.
New ES (Windsor, Winterfield, Idlewild) (17)	Neighboring Concepts	Rodgers-Holt Brothers
New HS (South, Ardrey) (17)	Ratio	Messer
Projects in Bid/Award/Construction Phase		
Briarwood Elementary School Replacement (17)	ADW	New Atlantic
CTE (Harding, Olympic, South) (17)	MPS	Branch Brownstone
East Mecklenburg High School (17)	Morris Berg	Turner Construction
Garinger Addition/Renovation & CTE (17)	LS3P	Balfour Beatty
Lansdowne Elementary School Replacement (17)	Perkins Eastman	Edifice, Inc.
Montclair Elementary School (17)	WHN	Messer
New ES (Bain, Lebanon Rd, Piney Grove) (17)	FWA	Metcon
New High School (Olympic Relief) (17)	Little Diversified	Edifice, Inc.
North Academy of World Languages (17)	ADW	New Atlantic
Shamrock Gardens Elementary School Replacement (17)	Little Diversified	Rodgers-Holt Brothers
Sharon Elementary School (17)	Clark Nexsen	Samet
South Academy of International Languages (17)	FWA	Messer
South Pine Academy (17)	FWA	Metcon
West Charlotte High School (17)	LS3P	Rodgers-Holt Brothers
West Mecklenburg Gym (17)	Moseley	Barnhill/DA Everett

Capital Improvements Program
Projects Substantially Completed/Closed *

School	Turnover Year	Architect	General Contractor
Collinswood Language Academy (17)	Aug-20	Perkins Eastman	Turner Construction
Harding High School Renovation (17)	Aug-20	SFLA	Barnhill Contracting
Rea Farms STEAM Academy (13)	Aug-20	Little Diversified	Balfour Beatty
Ashley Park K-8 Conversion (13)	Aug-19	ADW	Turner Construction
Druid Hills K-8 Conversion (13)	Aug-19	ADW	Edifice, Inc.
Selwyn Elementary (13)	Aug-19	Clark Nexsen	Balfour Beatty
Charlotte Mecklenburg Academy (17)	Aug-19	KSQ	Edifice, Inc.
Davidson K-8 (13)	Aug-19	Little Diversified	Gilbane
CTE - North Mecklenburg High (13)	Aug-19	LS3P	Shiel Sexton
CTE - Garinger (13)	Mar-19	LS3P	Hostetter & Son
CTE - Independence (13)	Mar-19	LS3P	D.E. Brown
CTE - West Mecklenburg (13)	Mar-19	LS3P	Hostetter & Son
Charlotte East Language Academy (13)	Aug-18	Morris Berg	Edifice, Inc
Myers Park High School Phase 3 (13)	Aug-18	Boomerang Design	BE&K
Northridge Middle (13)	Aug-18	Morris Berg	Barnhill Contracting
Myers Park High Bldg 2 (13)	Feb-18	Boomerang Design	BE&K
East Mecklenburg High Addition (13)	Jan-18	Bergman (fna Gantt Huberman)	Edifice, Inc.
J.M. Alexander Middle (13)	Aug-17	FWA Group	Balfour Beatty
Northwest School of the Arts Renovation (13)	Aug-17	Moseley	Turner Construction
Renaissance West STEAM Academy (13)	Aug-17	Little Diversified	Rodgers Construction
South Mecklenburg High Addition (13)	Jul-17	SFLA	Barnhill Contracting
Myers Park High Bldg 1 (13)	Sep-16	Boomerang	KBR
Statesville Road Elementary (13)	Aug-16	ADW	JE Dunn
Nations Ford Elementary (13)	Aug-16	Wash Hatem Nelson	Messer Construction
Olympic High Addition (13)	Aug-16	McMillan, Pazdan, Smith	Turner Construction
Lawrence Orr Elementary (07)	Aug-15	Cort Architectural Group	DH Griffin/Metcon
Parkside Elementary (07)	Aug-15	Wash Hatem Nelson	Clancy & Theys
Hawthorne High Renovations (07)	Aug-15	Morris-Berg	Balfour Beatty
Newell Elementary (07)	Aug-15	Perkins Eastman	New Atlantic Contracting
Ranson Middle (07)	Aug-15	Morris-Berg	Edifice, Inc.
Vance High	Jan-15	LS3P	Matthews Construction Co., Inc.
Garinger High - Renovations/Addition	Aug-14	Adams Group Architects	Turner Construction
Olympic High - Stadium	Aug-14	Site Solutions	Turner Construction
West Mecklenburg High - Stadium	Aug-14	Site Solutions	Turner Construction
Collinswood - Indoor Air Quality	Aug-14	PEA	The Bowers Group
Lansdowne - Indoor Air Quality	Aug-14	AeroRaq	Tyler 2
McKee Road - Indoor Air Quality	Aug-14	McCracken & Lopez	Godfrey Construction
Garinger High - Track & Field	Jul-14	Site Solutions	Turner Construction
Independence High - Gym	Jun-14	Shook Kelly	Shelco, Inc. (CM)
Palisades Park Elementary	May-14	Wash Hatem Nelson	Clancy & Theys
East Mecklenburg High Auditorium	Jan-14	Gantt Huberman Associates	Godfrey Construction Co., Inc.
Pineville Elementary	Aug-13	Cort Architectural Group	Beam Construction Co., Inc.
Bain Elementary	Aug-13	ADW	Edison Foard
Grand Oak Elementary	Aug-13	ADW	Matthews Construction Co., Inc.
McClintock Middle	Aug-13	FWA Group	Shelco, Inc.
Sedgefield Elementary Demolition	Oct-12	Cort Architectural Group	EHG, LLC
Alexander Graham Middle Gym Reno	Aug-12	MBAJ Architecture	Edison Foard
First Ward - Demolition & Bus lot	Aug-12	MBAJ Architecture	T.K. Browne
South Meck High Parking Lot Renovation	Aug-12	Little Diversified	Sorenson Gross
Cochrane Middle - Kitchen	Aug-11	MBAJ Architecture	Sorenson Gross
Hough High	Aug-10	Little Diversified	Rodgers Construction
Rocky River High	Aug-10	Little Diversified	Balfour Beatty

CMS Capital Improvement Plan 2017 Bond Projects



PROJECT STATUS REPORT



Monthly Project Status 2017 Bond Summary

June 2021

Project	Current Project Estimate	Project Scope	** Occupy On	Design Phase	Construction Progress	Project Status
Briarwood Elementary School (17)	\$ 31,962,730	45-classroom replacement facility; replaces school built in 1956.	August 2021	Complete	82 %	The construction manager for the Briarwood Elementary Replacement School continued with final finishes throughout the building including final paint, tack boards, marker boards, accessories, and security and camera systems. The administration area saw final wall point up and installation of intercom and security devices. The media center final paint and marker boards were completed. The main lobby progressed with the specialized ceilings, guardrails and VCT. Cafeteria and multi-purpose VCT was installed and final paint was completed. The exterior sod and fencing was completed along with the ground covering for the tree save area. The mobile classrooms were relocated which allowed the phased asphalt entrance to begin.
Bruns Academy (17)	\$ 39,784,927	New 45-classroom elementary school (K-5); replaces old school built in 1969.	August 2024	Not Started	0 %	This project is scheduled to start design Spring 2022.

Monthly Project Status

2017 Bond Summary

June 2021

Project	Current Project Estimate	Project Scope	** Occupy On	Design Phase	Construction Progress	Project Status
Career and Technology Education (17)	\$ 10,159,765	Phase I CTE upgrades at Olympic, Harding, Garinger and South Mecklenburg.	January 2023	Complete	7 %	The CTE projects at Harding, South Mecklenburg and Olympic construction manager has mobilized on site and has erected the construction isolation fencing and secured the lay-down areas. The selective demolition is underway and submittals for equipment and materials are being reviewed by the architect and engineers. Harding and South Mecklenburg have new bathrooms that are focus points for the summer to provide use in late August. The Harding project consists of renovations to existing classrooms in the auditorium building to develop a suite of technology classrooms. The project at Olympic includes electrical up fits to the existing carpentry lab which expands the curriculum to include demonstration learning booths for plumbing and electrical trades. The project at South Mecklenburg consists of renovating the old kitchen area into a culinary arts lab and classroom.
Charlotte-Mecklenburg Academy (17)	\$ 18,079,506	New EC school located on the old Statesville Elementary School site.	August 2019	Complete	100 %	Project is complete.
Collinswood Language Academy (17)	\$ 42,272,540	New 63-classroom K-8 facility on the site of the Smith Family Center.	August 2020	Complete	100 %	Project is complete.
E.E. Waddell (17)	\$ 5,137,367	Repurpose current E.E. Waddell to reopen as a magnet high school.	August 2023	Design Development	0 %	The E.E. Waddell High School project is currently in the design development phase; coordinating scope with operations on the repurpose project.

Monthly Project Status

2017 Bond Summary

June 2021

Project	Current Project Estimate	Project Scope	** Occupy On	Design Phase	Construction Progress	Project Status
East Mecklenburg High School (17)	\$ 15,058,594	This project will provide for the design, and construction of a new 30 classroom building.	August 2022	Complete	15 %	The construction manager for East Mecklenburg High School has started pouring the slab on grade as footing and foundation walls are complete. The underground infrastructure to support the new building is also being coordinated with the public utilities. The existing primary power line feeding the 500 Building is scheduled to be relocated as part of the project but delays with Duke Energy have impacted the schedule. The next phase of the project will not be able to start until the line is relocated. The project team is working through supply chain logistics and issues with material availability. In some cases, product substitutions are being considered to maintain overall construction schedule.
Garinger High School (17)	\$ 14,486,979	Project includes the design and construction for renovations of 300 building and a new 16 classroom building.	January 2023	Complete	1 %	The Garinger Addition and Renovation construction project was approved by the Board of Education in June. The construction manager began mobilization and submission of submittals for the project.
Harding High School (17)	\$ 14,530,263	Renovation of the kitchen, cafeteria, existing gym (aux) and the addition of a new gym.	August 2020	Complete	99 %	Construction Manager has change items that will be completed summer 2021 and is finalizing financial reconciliation.
JT Williams (17)	\$ 15,732,600	Project includes building renovations to J.T. Williams Montessori magnet.	August 2024	Pre-Schematic	0 %	Design is scheduled to start summer of 2021.
Lansdowne Elementary School (17)	\$ 37,128,834	New 45-classroom school; replaces old school built in 1959 and relieve crowding at Elizabeth Lane ES.	August 2022	Complete	8 %	The Lansdowne Elementary School construction manager continues to dig and pour perimeter building footings. They will be pouring the slab on grade in phases as underground electrical and plumbing rough-ins are completed. The underground storm water detention pipes have been delivered and installation is ongoing. The project team is working through supply chain logistics and issues with material availability. In some cases, product substitutions are being considered to maintain overall construction schedule. The existing school sanitary sewer lines are being rerouted around the current construction area.

Monthly Project Status

2017 Bond Summary

June 2021

Project	Current Project Estimate	Project Scope	** Occupy On	Design Phase	Construction Progress	Project Status
Lincoln Heights Elementary School (17)	\$ 4,588,675	Repurpose and reopen as magnet school.	August 2023	Construction Documents	0 %	Shamrock Gardens will be utilizing the Lincoln Heights Elementary building as swing space August 2020 - August 2022. Playgrounds were replaced and new digital signage was installed summer 2020. Based on Board approval in May 2021 the occupancy date has been moved to 2023.
Montclair Elementary School (17)	\$ 28,559,390	New 45-classroom replacement facility replacing school built in 1958.	August 2020	Complete	98 %	The construction manager for the Montclair Elementary School installed all the islands and site lighting on the project including the new staff and bus lot. The play field was sodded and seeding was installed in the remaining areas. The new entrance to the staff lot was installed and the bus lot entrance will be completed next month. The conversion to a sand filter started in pond 1 and pond 2 will follow. The new 45-classroom elementary school building has been occupied. The remaining site work is being completed.
Mountain Island Lake Academy (17)	\$ 10,488,400	K-8 Phase 2 - New gymnasium and specialty classrooms.	August 2023	Pre-Schematic	0 %	The Mountain Island School project has progressed into the pre-schematic design phase to include the Architects' pre-schematic design deliverable for CMS review and comments. This project consists of a building addition containing a middle school gymnasium, art, dance and two core classrooms.
New Elementary School (Bain, Lebanon, Piney Grove) (17)	\$ 31,455,951	New 45-classroom elementary school; relieves crowding at Bain, Lebanon Road, Piney Grove.	August 2022	Complete	2 %	The New Elementary School (Bain, Lebanon, Piney Grove Relief) project's construction manager has completed the perimeter erosion control and isolation fencing. They have moved into clearing and grading. The temporary storm water pond has been dug and reviewed by NCDEQ. New building corners have been staked and work has started to get the building pad on grade. This new 45-classroom school will be located next to the existing Mint Hill Middle School.

Monthly Project Status

2017 Bond Summary

June 2021

Project	Current Project Estimate	Project Scope	** Occupy On	Design Phase	Construction Progress	Project Status
New Elementary School (Elon, Hawk Ridge, Polo Relief) (17)	\$ 43,476,676	New 45-classroom elementary school to relieve Elon, Hawk Ridge, Polo.	August 2023	Design Development	0 %	The New Elementary School (Elon, Hawk Ridge, Polo Relief) project has progressed into the design development phase. The traffic analysis study and rezoning application are nearing completion and are scheduled to be released to CDOT and Zoning Department in July, 2021. This new 45-classroom school will be located across from the Ardrey Kell High School.
New Elementary School (Hidden Valley, JW Grier, Newell) (17)	\$ 34,697,022	New 45-classroom elementary school; relieves overcrowding at Hidden Valley, J.W. Grier, Newell.	August 2023	Design Development	0 %	The New Elementary School (Hidden Valley, JW Grier, Newell Relief) project has progressed into the design development phase. Development of the traffic analysis study is nearly complete for submission to NCDOT's review and comments. This new 45-classroom school will be located next to Northridge Middle School.
New Elementary School (Windsor, Winterfield, Idlewild Relief) (17)	\$ 37,197,022	New 45-classroom elementary school to relieve Windsor, Winterfield, and Idlewild ES.	August 2023	Schematic	0 %	The New Elementary School (Windsor, Winterfield, Idlewild Relief) architect has submitted their schematic design phase deliverable for CMS review and comments. Site acquisition and due diligence activities started at the end of June and will conclude in July. The project is planned to be located on land in the Executive Circle Drive area.
New High School (17) (Olympic Relief)	\$ 109,908,793	New 100 classroom high school; relieves crowding at Olympic High School.	August 2022	Complete	57 %	The construction manager for the New High School Olympic Relief progressed throughout the building with exterior and interior metal studs and drywall installations. The mechanical, electrical and plumbing trades continued with above ceiling and in wall rough in while focusing on work in the mechanical and electrical rooms. The pool contractor continued excavating the pool to begin underground plumbing and electrical. Site work continued on the athletic fields and erosion control throughout the site.

Monthly Project Status

2017 Bond Summary

June 2021

Project	Current Project Estimate	Project Scope	** Occupy On	Design Phase	Construction Progress	Project Status
New High School (South, Ardrey) (17)	\$ 154,930,460	New 100 classroom high school to relieve South Mecklenburg, Ardrey Kell and Myers Park HS.	August 2024	Design Development	0 %	The New High School (South, Ardrey Kell Relief) architect has delivered the design development submittal for CMS review and comments. This review period will conclude in early July. CDOT's review and approval of the traffic analysis study continues; official responses are expected in July. Local and state agency meetings with Charlotte Water, Army Corps of Engineers, and others departments continue to be held to progress the project's design. The projects rezoning application is scheduled to be submitted in July. This project consists of a new 100-classroom high school with athletic play fields and stadium.
North Academy of World Languages	\$ 43,359,367	New 66 classroom K-8 Language Immersion facility located on the old J.M. Alexander Middle School site.	August 2021	Complete	99 %	The construction manager for the North Academy of World Languages (fka New K-8 Language Immersion North) project has achieved the temporary certificate of occupancy. The new booster pump for the fire sprinkler system has been installed and passed required inspections. The FF&E deliveries got started in June. The Hambright Road improvements are completed awaiting final zoning and NCDOT inspections. The existing track and field resurfacing project is complete and athletic striping is finalized. The construction manager will be completing any punch list items identified by the architect and engineers.
Northwest School of the Arts (17)	\$ 20,467,000	Replace classroom building built in 1952 and build classroom addition that supports program.	August 2024	Not Started	0 %	Project to be funded by the County in FY22, planning underway.
Shamrock Gardens Elementary School (17)	\$ 35,358,351	New 45-classroom replacement facility.	August 2022	Complete	16 %	The Shamrock Gardens Elementary School construction manager completed the lime stabilization in the parking lots and loop roads. Curb and gutter installation began along with completing the storm and starting the fire and domestic water lines. CMU walls continued exterior and interior along with the MEP rough-ins in wall and below grade. Installation of structural steel continued and is expected to be complete in July.

Monthly Project Status

2017 Bond Summary

June 2021

Project	Current Project Estimate	Project Scope	** Occupy On	Design Phase	Construction Progress	Project Status
Sharon Elementary School (17)	\$ 9,475,862	Add 16 classroom building and increase capacity of cafeteria.	August 2021	Complete	98 %	The construction manager for the Sharon Elementary School Building Addition has achieved substantial completion for the new classroom wing and the cafeteria expansion. The building occupancy approvals have been granted. The FF&E started in June with new classroom furniture arriving. The construction manager is actively completing any open punch list items generated by the architect and engineers.
South Academy of International Languages (fka New K-8 School (South) (17)	\$ 42,959,367	New 71 classroom K-8 Language Immersion facility located on the old Nations Ford Elementary School site.	August 2021	Complete	99 %	The construction manager for the South Academy of International Languages (Fka New K-8 Language Immersion South) worked diligently on the punch list and commissioning items and has the list down to a minimal amount. FF&E began mid-April and the staff has moved in.
South Mecklenburg High School (17)	\$ 15,622,927	Renovate/replace two classroom buildings built in 1958 to upgrade learning conditions.	January 2025	Not Started	0 %	Project to be funded by the County in FY22, planning underway.
South Pine Academy	\$ 31,572,550	New 45-classroom elementary school to relieve Nations Ford, Sterling, and Steele Creek.	August 2021	Complete	96 %	The South Pine Academy (fka New Elementary School (Nations, Sterling, Steele Creek Relief) construction manager has worked through material delays on some of the finish products, casework and miscellaneous specialties. The building systems are being programed to allow functional testing to occur and final inspections by the code officials. The architect started the punch list for substantial completion.

Monthly Project Status

2017 Bond Summary

June 2021

Project	Current Project Estimate	Project Scope	** Occupy On	Design Phase	Construction Progress	Project Status
West Charlotte High School (17)	\$ 109,977,166	New 100 classroom school to replace current facility built in 1954.	August 2022	Complete	51 %	The West Charlotte High School construction manager's trade contractors continue to work throughout the facility. The crews are working from rough-ins to interior finishes. The roof is installed in areas allowing progress to continue and in other areas the roof installation continues. The exterior of the building is finalized in some areas while brick veneer and exterior metal wall panels are being completed at others. The swimming pool excavation is progressing. The athletic buildings have moved into interior finishes. The site contractor is working on curb and gutter and prepping areas for paving. The project team is working through supply chain logistics and issues with material availability. In some cases, product substitutions are being considered to maintain overall construction schedule.
West Mecklenburg High School (17)	\$ 10,850,902	Provide new gymnasium, the existing gymnasium will become the auxilliary.	August 2021	Complete	90 %	The West Mecklenburg High School Gym construction manager is finalizing the gym wood floor including athletic striping. The interior finishes and school mascot has been installed. Building final clean has also started. The architect and engineers have generated the punch list and sub-contractors are working the off the list. The site paving and concrete hardscapes is nearing completion.

MONTHLY PROJECT PHOTOS

PROJECT PROGRESS PHOTOS



Briarwood Elementary School Replacement

PROJECT PROGRESS PHOTOS



Briarwood Elementary School Replacement

PROJECT PROGRESS PHOTOS



Briarwood Elementary School Replacement

PROJECT PROGRESS PHOTOS



Briarwood Elementary School Replacement



Montclair Elementary School Replacement

PROJECT PROGRESS PHOTOS



Montclaire Elementary School Replacement

PROJECT PROGRESS PHOTOS



North Academy of World Languages
(fka K-8 Language Immersion North)

PROJECT PROGRESS PHOTOS



North Academy of World Languages
(fka K-8 Language Immersion North)

PROJECT PROGRESS PHOTOS



North Academy of World Languages
(fka K-8 Language Immersion North)

PROJECT PROGRESS PHOTOS



North Academy of World Languages
(fka K-8 Language Immersion North)

PROJECT PROGRESS PHOTOS



South Academy of International Languages
(fka K-8 Language Immersion South)

PROJECT PROGRESS PHOTOS



South Academy of International Languages
(fka K-8 Language Immersion South)

PROJECT PROGRESS PHOTOS



South Academy of International Languages
(fka K-8 Language Immersion South)

PROJECT PROGRESS PHOTOS



South Academy of International Languages
(fka K-8 Language Immersion South)

PROJECT PROGRESS PHOTOS



New High School Olympic Relief

PROJECT PROGRESS PHOTOS



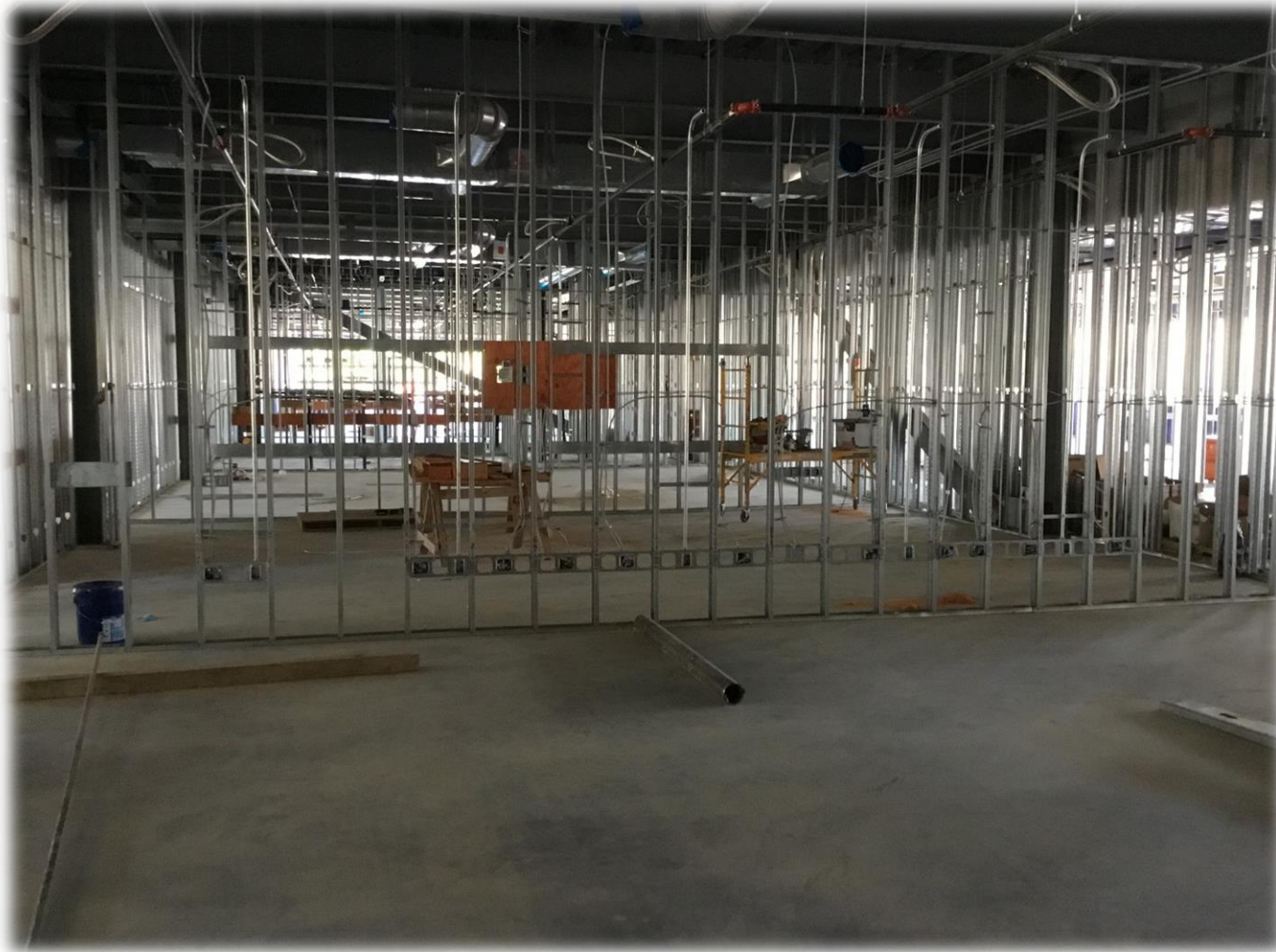
New High School Olympic Relief

PROJECT PROGRESS PHOTOS



New High School Olympic Relief

PROJECT PROGRESS PHOTOS



New High School Olympic Relief

PROJECT PROGRESS PHOTOS



New High School Olympic Relief

PROJECT PROGRESS PHOTOS



West Charlotte High School Replacement

PROJECT PROGRESS PHOTOS

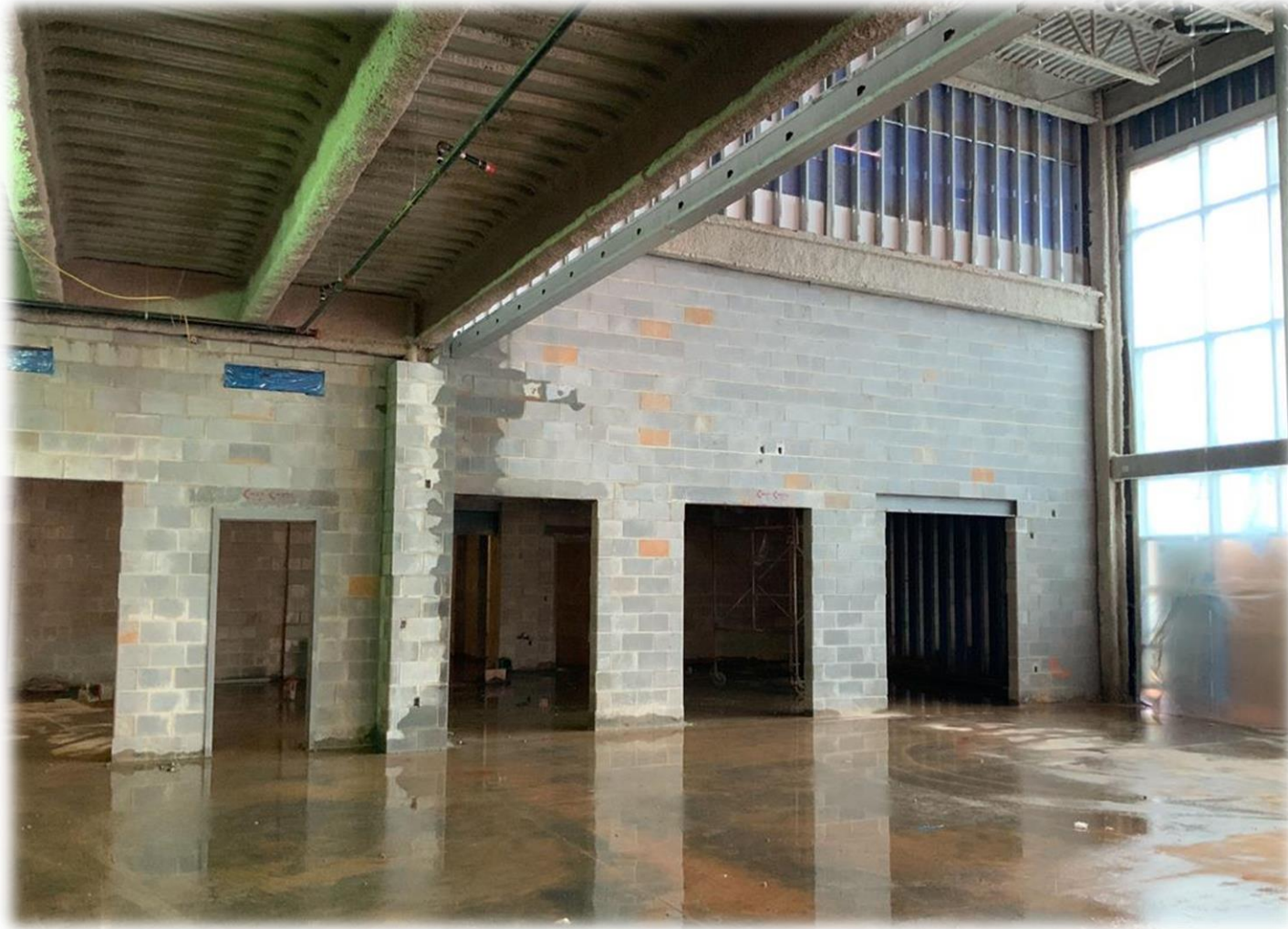


West Charlotte High School Replacement



West Charlotte High School Replacement

PROJECT PROGRESS PHOTOS



West Charlotte High School Replacement

PROJECT PROGRESS PHOTOS



West Charlotte High School Replacement

PROJECT PROGRESS PHOTOS



South Pine Academy
(fka New ES Nations Ford, Sterling, Steele Creek)

PROJECT PROGRESS PHOTOS



South Pine Academy
(fka New ES Nations Ford, Sterling, Steele Creek)

PROJECT PROGRESS PHOTOS



South Pine Academy
(fka New ES Nations Ford, Sterling, Steele Creek)

PROJECT PROGRESS PHOTOS



South Pine Academy
(fka New ES Nations Ford, Sterling, Steele Creek)



Sharon Elementary School Addition

PROJECT PROGRESS PHOTOS

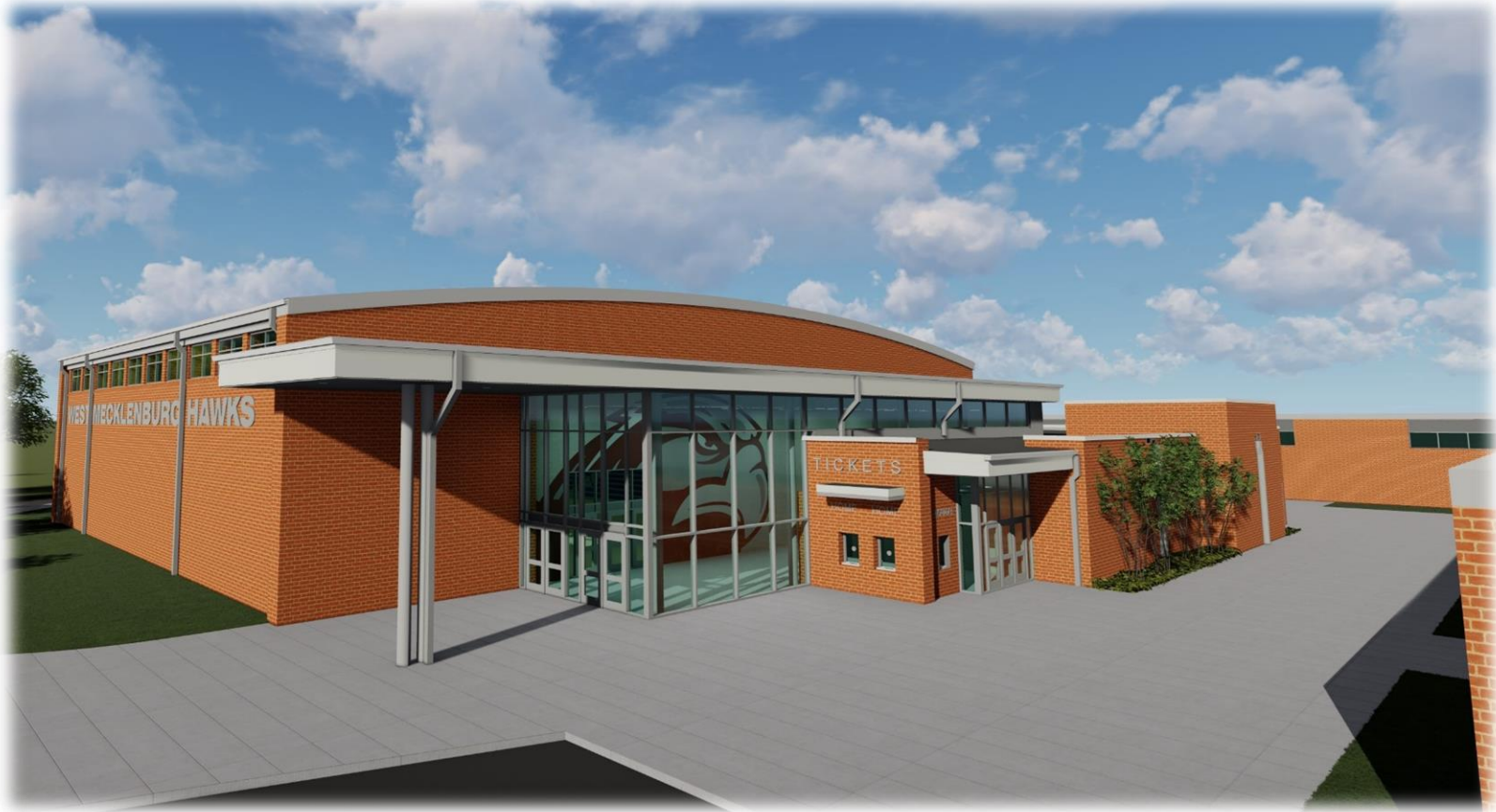


Sharon Elementary School Addition



Sharon Elementary School Addition

PROJECT PROGRESS PHOTOS



West Mecklenburg High School Gym

PROJECT PROGRESS PHOTOS



West Mecklenburg High School Gym

PROJECT PROGRESS PHOTOS



West Mecklenburg High School Gym

PROJECT PROGRESS PHOTOS



Shamrock Gardens Elementary School

PROJECT PROGRESS PHOTOS



Shamrock Gardens Elementary School

PROJECT PROGRESS PHOTOS



Shamrock Gardens Elementary School

PROJECT PROGRESS PHOTOS



Lansdowne Elementary School

PROJECT PROGRESS PHOTOS



Lansdowne Elementary School

PROJECT PROGRESS PHOTOS



Lansdowne Elementary School

PROJECT PROGRESS PHOTOS



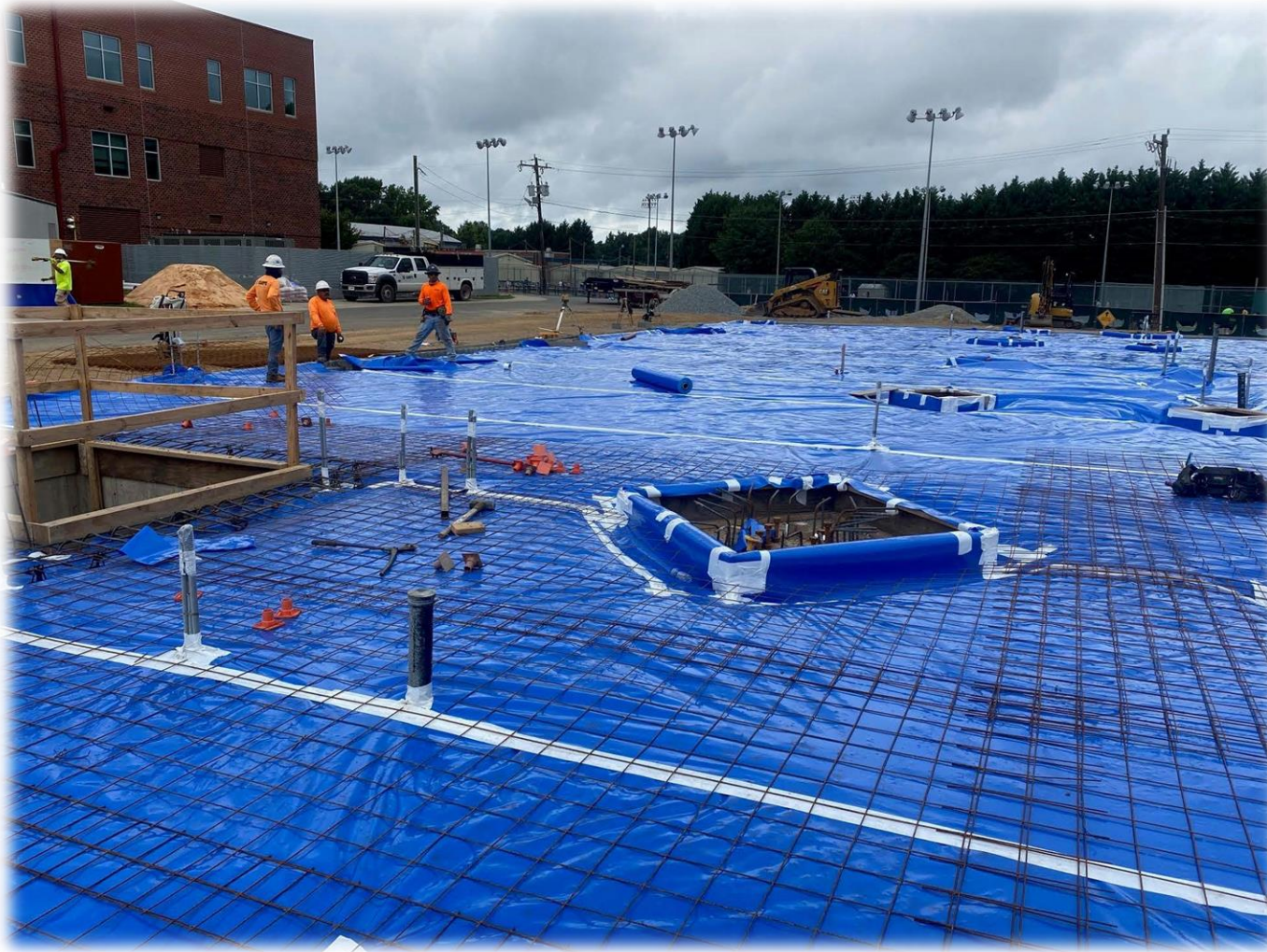
East Mecklenburg High School

PROJECT PROGRESS PHOTOS



East Mecklenburg High School

PROJECT PROGRESS PHOTOS



East Mecklenburg High School

PROJECT PROGRESS PHOTOS



New ES (Bain, Lebanon, Piney Grove Relief)

PROJECT PROGRESS PHOTOS



New ES (Bain, Lebanon, Piney Grove Relief)

MWSBE PARTICIPATION REPORT

Contract Status Report - MWSBE Participation Commitments

Report Date 7/20/2021

Charlotte-Mecklenburg Schools

7/20/2021 5:35:02 PM

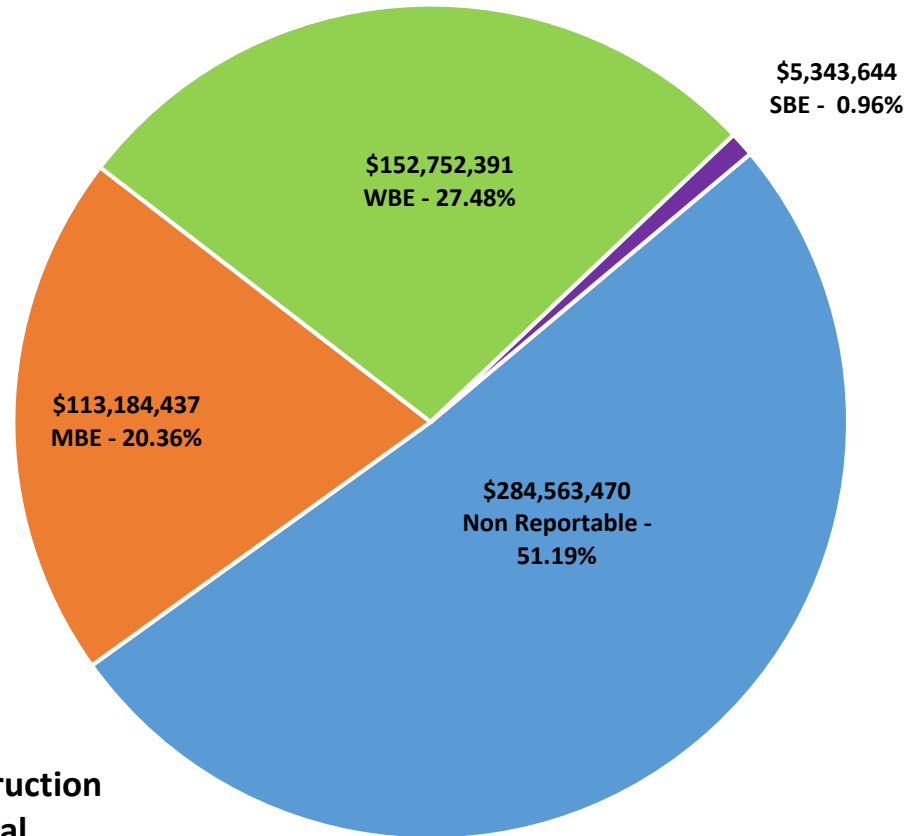
2017 Bond Projects

June 2021 Monthly Bond Report

Facility	Contract Amount	African American MBE\$	%	Other MBE \$	%	Total MBE \$	%	Other WBE \$	%	Other SBE \$	%	Total	%
<u>Briarwood Elementary School (17)</u>	\$28,696,836	\$3,505,637	12.22%	\$2,027,100	7.06%	\$5,532,737	19.28%	\$1,937,008	6.75%	\$152,902	0.53%	\$7,622,647	26.56%
<u>Career and Technology Education (17)</u>	\$5,909,090	\$817,239	13.83%	\$1,486,718	25.16%	\$2,303,956	38.99%	\$655,159	11.09%	\$35,485	0.60%	\$2,994,601	50.68%
<u>Charlotte-Mecklenburg Academy (17)</u>	\$17,035,852	\$198,536	1.17%	\$1,029,192	6.04%	\$1,227,728	7.21%	\$872,755	5.12%	\$13,200	0.08%	\$2,113,683	12.41%
<u>Collinswood Language Academy (17)</u>	\$38,551,189	\$412,763	1.07%	\$1,786,047	4.63%	\$2,198,810	5.70%	\$11,144,362	28.91%	\$257,800	0.67%	\$13,600,972	35.28%
<u>E.E. Waddell (17)</u>	\$152,000	\$0	0.00%	\$0	0.00%	\$0	0.00%	\$10,950	7.20%	\$0	0.00%	\$10,950	7.20%
<u>East Mecklenburg High School (17)</u>	\$12,495,074	\$603,811	4.83%	\$535,415	4.29%	\$1,139,226	9.12%	\$490,382	3.92%	\$681,075	5.45%	\$2,310,683	18.49%
<u>Garinger High School (17)</u>	\$169,565	\$0	0.00%	\$37,000	21.82%	\$37,000	21.82%	\$20,525	12.10%	\$0	0.00%	\$57,525	33.93%
<u>Harding High School (17)</u>	\$13,005,626	\$1,504,505	11.57%	\$310,356	2.39%	\$1,814,862	13.95%	\$3,846,831	29.58%	\$176	0.00%	\$5,661,869	43.53%
<u>JT Williams (17)</u>	\$1,180,500	\$0	0.00%	\$0	0.00%	\$0	0.00%	\$0	0.00%	\$0	0.00%	\$0	0.00%
<u>Lansdowne Elementary School (17)</u>	\$30,617,679	\$33,367	0.11%	\$142,400	0.47%	\$175,767	0.57%	\$206,632	0.67%	\$223,625	0.73%	\$606,024	1.98%
<u>Lincoln Heights Elementary School (17)</u>	\$432,426	\$92,274	21.34%	\$18,800	4.35%	\$111,074	25.69%	\$0	0.00%	\$74,503	17.23%	\$185,577	42.92%
<u>Montclair Elementary School (17)</u>	\$26,201,789	\$2,354,489	8.99%	\$1,811,134	6.91%	\$4,165,623	15.90%	\$5,506,834	21.02%	\$464,102	1.77%	\$10,136,559	38.69%
<u>Mountain Island Lake Academy (17)</u>	\$839,950	\$0	0.00%	\$0	0.00%	\$0	0.00%	\$0	0.00%	\$0	0.00%	\$0	0.00%
<u>New Elementary School (Bain, Leban)</u>	\$26,301,565	\$4,421,430	16.81%	\$19,078,950	72.54%	\$23,500,380	89.35%	\$1,233,970	4.69%	\$309,180	1.18%	\$25,043,530	95.22%
<u>New Elementary School (Elon, Hawk)</u>	\$1,937,105	\$0	0.00%	\$0	0.00%	\$0	0.00%	\$60,490	3.12%	\$0	0.00%	\$60,490	3.12%
<u>New Elementary School (Hidden Vall)</u>	\$2,026,823	\$0	0.00%	\$99,674	4.92%	\$99,674	4.92%	\$21,200	1.05%	\$25,900	1.28%	\$146,774	7.24%
<u>New Elementary School (Windsor, W)</u>	\$2,010,570	\$1,456,670	72.45%	\$258,000	12.83%	\$1,714,670	85.28%	\$165,750	8.24%	\$0	0.00%	\$1,880,420	93.53%
<u>New High School (17) (Olympic Relief)</u>	\$98,154,986	\$13,327,452	13.58%	\$3,995,401	4.07%	\$17,322,853	17.65%	\$8,017,674	8.17%	\$766,550	0.78%	\$26,107,077	26.60%
<u>New High School (South, Ardrey) (17)</u>	\$6,194,775	\$13,500	0.22%	\$96,500	1.56%	\$110,000	1.78%	\$50,000	0.81%	\$1,125	0.02%	\$161,125	2.60%
<u>North Academy of World Languages</u>	\$38,265,523	\$1,964,711	5.13%	\$1,909,480	4.99%	\$3,874,191	10.12%	\$4,583,546	11.98%	\$420,199	1.10%	\$8,877,936	23.20%
<u>Northwest School of the Arts (17)</u>	\$115,000	\$0	0.00%	\$0	0.00%	\$0	0.00%	\$0	0.00%	\$0	0.00%	\$0	0.00%
<u>Shamrock Gardens Elementary Scho</u>	\$27,979,335	\$1,788,332	6.39%	\$1,468,047	5.25%	\$3,256,379	11.64%	\$22,586,501	80.73%	\$281,734	1.01%	\$26,124,614	93.37%
<u>Sharon Elementary School (17)</u>	\$8,506,654	\$259,494	3.05%	\$399,099	4.69%	\$658,593	7.74%	\$1,223,818	14.39%	\$208,346	2.45%	\$2,090,757	24.58%
<u>South Academy of International Lang</u>	\$37,765,744	\$4,611,183	12.21%	\$2,208,803	5.85%	\$6,819,987	18.06%	\$10,499,453	27.80%	\$347,799	0.92%	\$17,667,238	46.78%

Facility	Contract Amount	African American MBE\$	%	Other MBE \$	%	Total MBE \$	%	Other WBE \$	%	Other SBE \$	%	Total	%
<u>South Pine Academy</u>	\$26,415,366	\$916,165	3.47%	\$18,870,841	71.44%	\$19,787,006	74.91%	\$4,887,125	18.50%	\$238,129	0.90%	\$24,912,261	94.31%
<u>West Charlotte High School (17)</u>	\$94,938,900	\$15,116,534	15.92%	\$1,519,700	1.60%	\$16,636,234	17.52%	\$72,580,016	76.45%	\$562,104	0.59%	\$89,778,354	94.56%
<u>West Mecklenburg High School (17)</u>	\$9,944,021	\$279,936	2.82%	\$417,752	4.20%	\$697,688	7.02%	\$2,151,409	21.64%	\$279,710	2.81%	\$3,128,807	31.46%
Grandtotal	\$555,843,942	\$53,678,029	9.66%	\$59,506,408	10.71%	\$113,184,437	20.36%	\$152,752,391	27.48%	\$5,343,644	0.96%	\$271,280,472	48.81%

MWSBE Participation 2017 Bond Projects



**Design and Construction
Contract Total
\$555,843,942**

PROJECT CONTROLS

CHARLOTTE-MECKLENBURG BOARD OF EDUCATION
2013 BOND SERIES-CAPITAL IMPROVEMENT PROGRAM
BUDGET STATUS REPORT

	Original Project Budget	Current Project Budget	Committed Amount	Approved Change Orders	Total Committed	Pending Commitments	To Be Committed	Prev Paid To Date	Paid To Date	Balance To Complete	Monthly Expenditure
	(A)	(B)	(C)	(D)	(E)=C+D	(F)	(G)=(B-E-F)	(H)	(I)	(J)=(B-I)	(K)=(I-H)
<u>A. REPLACEMENT & RENOVATIONS</u>											
1 Career & Technology Education Institutes Phase 1:	\$8,640,000	\$18,256,861	\$7,064,749	\$333,080	\$7,397,829	\$0	\$10,859,032	\$7,331,747	\$7,331,747	\$10,925,114	\$0
2 Davidson K-8 Conversion	\$9,500,000	\$13,610,000	\$2,130,689	\$11,364,591	\$13,495,280	\$0	\$114,720	\$13,455,637	\$13,455,637	\$154,363	\$0
3 J.M. Alexander Middle Replacement	\$30,672,000	\$29,845,539	\$4,502,518	\$25,343,021	\$29,845,539	\$0	\$0	\$29,845,539	\$29,845,539	\$0	\$0
4 Nations Ford Elementary Replacement	\$19,440,000	\$19,231,603	\$3,958,869	\$15,272,733	\$19,231,603	\$0	\$0	\$19,231,604	\$19,231,604	\$0	\$0
5 Northwest School of the Arts	\$12,420,000	\$12,868,718	\$2,047,917	\$10,820,801	\$12,868,718	\$0	\$0	\$12,868,719	\$12,868,719	\$0	\$0
6 Oakhurst STEAM Magnet Elementary/Starmount	\$5,940,000	\$5,407,812	\$3,471,397	\$1,936,415	\$5,407,812	\$0	\$0	\$5,407,812	\$5,407,812	\$0	\$0
7 Pre-K-8 Conversions Phase II: Ashley Park/ Bruns	\$24,732,000	\$19,791,457	\$4,167,669	\$15,563,538	\$19,731,207	\$0	\$60,250	\$19,700,807	\$19,700,807	\$90,650	\$0
8 Selwyn Elementary	\$2,592,000	\$4,687,004	\$744,378	\$3,881,906	\$4,626,284	\$0	\$60,720	\$4,624,831	\$4,624,831	\$62,172	\$0
9 Statesville Road Elementary	\$20,340,000	\$20,648,510	\$5,081,473	\$15,567,037	\$20,648,509	\$0	\$0	\$20,648,509	\$20,648,509	\$0	\$0
Total Replacement & Renovations	\$134,276,000	\$144,347,503	\$33,169,659	\$100,083,122	\$133,252,781	\$0	\$11,094,722	\$133,115,205	\$133,115,205	\$11,232,298	\$0
<u>B. RESPONSE TO ENROLLMENT GROWTH</u>											
1 East Mecklenburg High Addition	\$12,744,000	\$10,988,287	\$3,369,684	\$7,618,603	\$10,988,287	\$0	\$0	\$10,988,287	\$10,988,287	\$0	\$0
2 Myers Park High Addition	\$22,248,000	\$11,070,580	\$1,207,493	\$9,833,448	\$11,040,942	\$0	\$29,639	\$11,040,941	\$11,040,941	\$29,639	\$0
3 Northridge Middle Addition	\$6,448,000	\$6,366,170	\$2,114,306	\$4,251,865	\$6,366,171	\$0	\$0	\$6,366,171	\$6,366,171	\$0	\$0
4 Olympic High Addition/Renovation	\$8,964,000	\$8,947,310	\$2,002,694	\$6,944,615	\$8,947,310	\$0	\$0	\$8,947,310	\$8,947,310	\$0	\$0
5 South Mecklenburg High Addition	\$18,360,000	\$16,307,355	\$2,922,282	\$13,385,073	\$16,307,355	\$0	\$0	\$16,307,355	\$16,307,355	\$0	\$0
6 Charlotte East Language Academy (FKA -New Lang	\$30,376,000	\$31,456,414	\$5,740,242	\$25,692,685	\$31,432,927	\$0	\$23,487	\$31,387,929	\$31,387,929	\$68,485	\$0
7 Rea Farms STEAM Academy	\$31,376,000	\$40,476,000	\$9,134,265	\$30,214,465	\$39,348,729	\$52,310	\$1,074,961	\$38,163,520	\$38,164,219	\$2,311,781	\$699
8 Renaissance West STEAM Academy (FKA New Pre-	\$30,376,000	\$31,740,150	\$5,667,328	\$26,072,822	\$31,740,150	\$0	\$0	\$31,698,952	\$31,698,952	\$41,199	\$0
Total Response to Enrollment Growth	\$160,892,000	\$157,352,267	\$32,158,295	\$124,013,576	\$156,171,871	\$52,310	\$1,128,087	\$154,900,465	\$154,901,164	\$2,451,104	\$699
<u>C. CONTINGENCY</u>											
	\$0	\$0	\$0	\$0	\$0	\$0	\$0	\$0	\$0	\$0	\$0
Total Contingency	\$0	\$0	\$0	\$0	\$0	\$0	\$0	\$0	\$0	\$0	\$0
TOTAL LOCAL BOND PROGRAM	\$295,168,000	\$301,699,771	\$65,327,954	\$224,096,698	\$289,424,652	\$52,310	\$12,222,809	\$288,015,670	\$288,016,369	\$13,683,402	\$699

Original project estimated costs approved by the Board Of Education on July 23, 2013 and approved by the voters of Mecklenburg County on November 5, 2013.

Note: Mecklenburg County's appropriated interest from COPS to increase funding for the 2013 Bond Program.

CHARLOTTE-MECKLENBURG BOARD OF EDUCATION
2017 BOND SERIES-CAPITAL IMPROVEMENT PROGRAM
BUDGET STATUS REPORT

	Original Project Budget	Current Project Budget	Committed Amount	Approved Change Orders	Total Committed	Pending Commitments	To Be Committed	Prev Paid To Date	Paid To Date	Balance To Complete	Monthly Expenditure
	(A)	(B)	(C)	(D)	(E)=(C+D)	(F)	(G)=(B-E-F)	(H)	(I)	(J)=(B-I)	(K)=(I-H)
<u>A. REPLACEMENT & RENOVATIONS</u>											
1 Briarwood Elementary *	\$29,091,619	\$31,962,730	\$4,936,535	\$26,609,642	\$31,546,176	\$6,672	\$409,882	\$20,042,765	\$22,538,632	\$9,424,098	\$2,495,867
2 Bruns Academy Replacement	\$34,207,808	\$39,784,927	\$1,433,024	\$218,050	\$1,651,074	\$0	\$38,133,853	\$0	\$0	\$39,784,927	\$0
3 Career & Technology Education Upgrades	\$10,101,734	\$10,159,765	\$2,260,555	\$4,093,502	\$6,354,057	\$0	\$3,805,708	\$1,171,791	\$1,200,674	\$8,959,091	\$28,883
4 Collinswood K-8 *	\$44,172,540	\$42,272,540	\$5,010,866	\$36,706,773	\$41,717,639	\$0	\$554,901	\$41,371,394	\$41,371,394	\$901,146	\$0
5 East Mecklenburg HS	\$12,771,594	\$15,058,594	\$1,788,803	\$11,387,595	\$13,176,397	(\$6,960)	\$1,889,156	\$1,685,696	\$2,189,836	\$12,868,758	\$504,140
6 Garinger HS	\$13,936,979	\$14,486,979	\$1,464,369	(\$70,000)	\$1,394,369	\$0	\$13,092,610	\$188,740	\$197,393	\$14,289,586	\$8,654
7 Harding University High *	\$18,330,263	\$14,530,263	\$2,048,751	\$11,712,323	\$13,761,074	\$50,000	\$719,189	\$13,156,028	\$13,532,916	\$997,347	\$376,888
8 Charlotte-Mecklenburg Academy (FKA -EC Specialty	\$18,957,960	\$18,079,506	\$2,175,504	\$15,790,598	\$17,966,102	\$2,665	\$110,739	\$17,699,220	\$17,699,220	\$380,286	\$0
9 Lansdowne Elementary	\$29,391,270	\$37,128,834	\$4,138,697	\$28,400,521	\$32,539,218	\$0	\$4,589,616	\$4,286,286	\$5,141,107	\$31,987,727	\$854,821
10 Lincoln Heights Elementary	\$3,740,478	\$4,588,675	\$577,649	\$26,774	\$604,423	\$0	\$3,984,252	\$383,738	\$383,738	\$4,204,937	\$0
11 Montclair Elementary Replacement *	\$28,559,390	\$28,559,390	\$2,439,368	\$26,056,957	\$28,496,324	\$0	\$63,066	\$27,371,136	\$27,459,420	\$1,099,970	\$88,284
12 Mountain Island k-8	\$9,218,439	\$10,488,400	\$1,093,515	\$0	\$1,093,515	\$0	\$9,394,885	\$0	\$0	\$10,488,400	\$0
13 Northwest School of the Arts	\$17,632,202	\$20,467,000	\$846,736	\$117,644	\$964,380	\$0	\$19,502,620	\$0	\$0	\$20,467,000	\$0
14 Shamrock Gardens Elementary *	\$29,890,351	\$35,358,351	\$3,665,663	\$26,053,763	\$29,719,426	\$22,346	\$5,616,579	\$5,693,440	\$7,175,914	\$28,182,437	\$1,482,474
15 Sharon Elementary	\$7,706,528	\$9,475,862	\$1,476,051	\$7,659,186	\$9,135,237	\$29,689	\$310,936	\$7,593,125	\$8,094,448	\$1,381,414	\$501,323
16 South Mecklenburg HS	\$13,352,143	\$15,622,927	\$554,114	\$94,238	\$648,352	\$0	\$14,974,575	\$0	\$0	\$15,622,927	\$0
17 E.E. Waddell Magnet HS	\$4,571,709	\$5,137,367	\$341,726	\$0	\$341,726	\$0	\$4,795,641	\$5,750	\$26,045	\$5,111,322	\$20,295
18 West Charlotte HS Replacement	\$109,977,166	\$109,977,166	\$11,885,722	\$88,163,139	\$100,048,861	\$152,000	\$9,776,305	\$43,687,461	\$47,453,893	\$62,523,273	\$3,766,432
19 West Mecklenburg HS	\$11,065,440	\$10,850,902	\$1,649,908	\$8,814,308	\$10,464,216	\$9,750	\$376,936	\$6,875,292	\$8,122,092	\$2,728,810	\$1,246,800
20 John Taylor Williams	\$13,964,339	\$15,732,600	\$1,760,020	\$0	\$1,760,020	\$0	\$13,972,580	\$0	\$0	\$15,732,600	\$0
Total Replacement & Renovations	\$460,639,952	\$489,722,778	\$51,547,574	\$291,835,012	\$343,382,586	\$266,163	\$146,074,030	\$191,211,863	\$202,586,722	\$287,136,056	\$11,374,859
<u>B. RESPONSE TO ENROLLMENT GROWTH</u>											
1 South Academy of International Languages	\$45,359,367	\$42,959,367	\$6,106,751	\$35,673,741	\$41,780,492	\$0	\$1,178,875	\$36,767,221	\$38,382,532	\$4,576,835	\$1,615,311
2 North Academy of World Languages (FKA - New K-8	\$45,359,367	\$43,359,367	\$6,311,321	\$35,913,137	\$42,224,458	\$761	\$1,134,148	\$37,076,328	\$38,293,671	\$5,065,696	\$1,217,343
3 South Pine Academy (FKA - New ES Nations Ford,	\$29,173,829	\$31,572,550	\$6,853,132	\$24,395,881	\$31,249,013	\$93,753	\$229,783	\$21,363,425	\$23,805,581	\$7,766,969	\$2,442,156
4 New Elementary School - Bain/Lebanon Relief	\$29,988,332	\$31,455,951	\$3,314,226	\$24,495,350	\$27,809,576	\$0	\$3,646,375	\$1,579,314	\$2,317,663	\$29,138,288	\$738,349
5 New Elementary School - Windsor Park Relief *	\$30,422,230	\$37,197,022	\$3,279,093	\$177,404	\$3,456,497	\$0	\$33,740,525	\$98,321	\$224,663	\$36,972,360	\$126,342
6 New Elementary School - Elon/Hawk Ridge Relief *	\$30,426,712	\$43,476,676	\$13,955,171	\$47,300	\$14,002,471	\$0	\$29,474,204	\$10,934,783	\$11,207,113	\$32,269,563	\$272,330
7 New Elementary School - Hidden Valley Relief	\$30,518,345	\$34,697,022	\$4,105,958	\$218,375	\$4,324,333	\$0	\$30,372,689	\$1,238,978	\$1,369,031	\$33,327,991	\$130,053
8 New High School - Olympic Relief	\$109,908,793	\$109,908,793	\$11,310,995	\$91,828,509	\$103,139,504	\$128,094	\$6,641,195	\$46,440,887	\$51,327,523	\$58,581,270	\$4,886,635
9 New High School - South Meck/Ardrey Kell Relief *	\$110,287,621	\$154,930,460	\$11,224,793	\$711,379	\$11,936,172	\$0	\$142,994,288	\$2,587,285	\$2,964,293	\$151,966,167	\$377,008
Total Response to Enrollment Growth	\$461,444,596	\$529,557,208	\$66,461,440	\$213,461,076	\$279,922,516	\$222,608	\$249,412,084	\$158,086,543	\$169,892,068	\$359,665,140	\$11,805,525
<u>C. CONTINGENCY</u>											
	\$0	\$0	\$0	\$0	\$0	\$0	\$0	\$0	\$0	\$0	\$0
Total Contingency	\$0	\$0	\$0	\$0	\$0	\$0	\$0	\$0	\$0	\$0	\$0

CHARLOTTE-MECKLENBURG BOARD OF EDUCATION
2017 BOND SERIES-CAPITAL IMPROVEMENT PROGRAM
BUDGET STATUS REPORT

	Original Project Budget	Current Project Budget	Committed Amount	Approved Change Orders	Total Committed	Pending Commitments	To Be Committed	Prev Paid To Date	Paid To Date	Balance To Complete	Monthly Expenditure
	(A)	(B)	(C)	(D)	(E)=C+D	(F)	(G)=(B-E-F)	(H)	(I)	(J)=(B-I)	(K)=(I-H)
TOTAL LOCAL BOND PROGRAM	\$922,084,548	\$1,019,279,985	\$118,009,014	\$505,296,088	\$623,305,101	\$488,771	\$395,486,113	\$349,298,405	\$372,478,790	\$646,801,196	\$23,180,384

Original project estimated costs approved by the Board Of Education on July 25, 2017 approved by the voters of Mecklenburg County on November 7, 2017.

*Project included in \$33.2M early funding approved by Board Of Education on August 9, 2016 and Mecklenburg Board of County Commissioners on September 6, 2016. On February 19, 2019 an additional \$8M was approved for New Elementary School - Elon/Hawk Ridge Relief site.

*Current Budget includes an additional \$89.2M to fund increase land and construction costs. The additional funds were approved by the Board of County Commissioners on June 16, 2020.

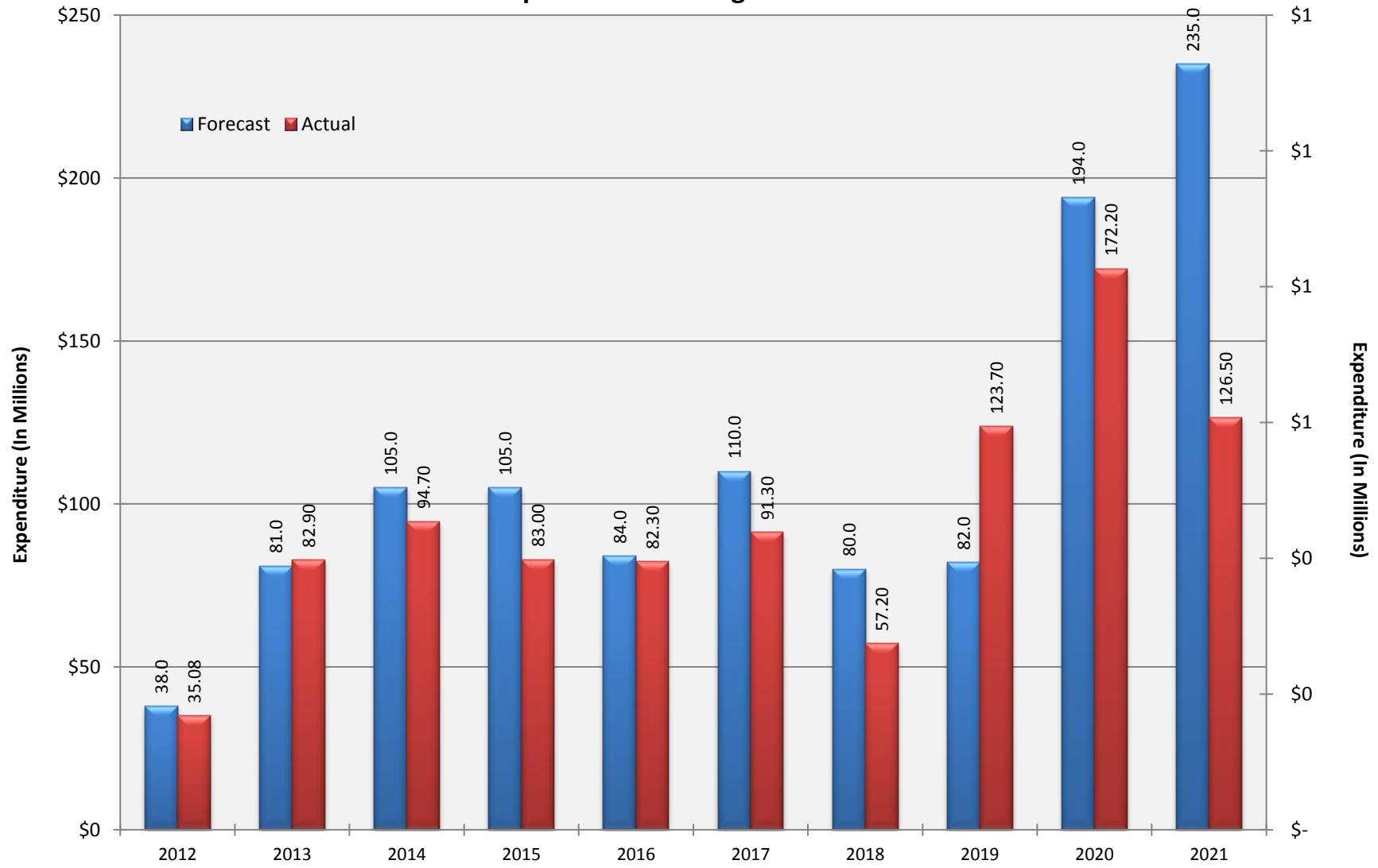
Charlotte-Mecklenburg Board of Education
Approved Construction or Repair Change Orders*
Reporting Period: June 2021

Funding Source	Project Name	Contractor	Description	Change Order Amount	Revised Contract Value
2017 Bond	North Academy of World Languages	New Atlantic Contracting, Inc.	Sanitary Sewer Flush, Improvements to Existing Track, Raise/Add Security Cameras, Add Fire Pump, GFCI Breakers at Kitchen, Revise Ceiling Cloud, Spandrel Glass, Mosaic Flooring on Stair, Hollie Trees at West Buffer, VFD's having Bypass function, Shared Savings from CM Contingency	\$57,969.00	\$35,708,228.58
2017 Bond	Sharon Elementary School (17)	Samet Corporation	Add Sidewalk Connectors, Removing Spoils, Type W3 Emergency Light Fixtures & Smoke Detectors, Relocate Electrical for Elevator Sump Pump, Add Firestopping at Elevator Shaft, Remove (4) Lavatories in Group Restrooms, Foundations at Governors Hill, Masonry Changes at Elevator Shaft, Correct Overflow Scupper Layout, Reconfigure Electrical Grounding for Telecom, Provide US Flags & Flag Holders, Paint Existing Wall in Connector of Classroom Building, Relocate Existing Memorial Tree, Add Tree in Parking Island, Spreading Stone at Playground, Remove Existing Backstop, Lump Sum GCs, NTP Delay, General Trades Recon, Signage Credit, Add Panic Device, Add Smoke Detector/Strobe, Lengthen Site Handrail, Area of Rescue Signage, Rotate Lights to allow access to VAV's, Door Hardware, Window & Blinds at 197	\$27,574.47	\$7,776,275.58
2017 Bond	West Mecklenburg High School (17)	Barnhill/D.A. Everett, a Joint Venture	Sound System Revisions, Add Speakers at Gym, Add Sensor Faucets, Premium Colors on Metal, Landscape Updates, Change to 2-Compartment Sink at Concessions, Add Bipolar Ionization, Add Shelving at Storage Room, CM Reconcile Contract Time.	\$57,919.00	\$8,897,002.00

* Not previously presented to the Board of Education for Approval (less than \$90,000)

10 YEAR EXPENDITURE SUMMARY

Forecast Expenditure versus
Actual Expenditures through June 2021



GLOSSARY

Glossary

- **Project Management** – This section includes updates from our project managers and describes the currently active construction projects. This includes from Board of Education award thru final completion.
- **Design and Bidding** – This section contains updates from our design managers on the projects currently in the design phase. This phase from design award to Board of Education award of construction.
- **Controls** – Section includes misc. updates from controls group including expenditures, related Board of Education awards during the reporting period, cash flow information. This section covers all projects from approved bond through final expenditures and bond close with the county.
- **MWSBE** – Contains updates from the MWSBE Director and team, including current activity and summaries of the participation by MWSBE providers on our program.
- **Bond Progress Summary** – Provides a summary of bond financials including bond value, committed/pending amounts, paid to date, expended this month.
- **Project Procurement Dates** - Next 90 Days major project bid activity.
- **Mobile Swing Space Utilization** – Includes a summary of program related swing space currently in use and the schedule of use.
- **Bond Summary Schedule** – Current program summary schedule including planned design, construction and FF&E. These activities are fed from detailed schedules and are fine-tuned as project information is available.
- **Project Contractor Teams**; Provides summary of turnover dates for completed/closed projects since 2010 including architects/designers and contractors.
- **School Site Location Maps** – General location of bond projects (2017) by type.
- **Project Status Report** – This section of the report provides a summary of the bond project scope, current estimate (all sources), planned occupancy/actual occupancy date. It also provides a current status of the design phase, construction progress and a brief update. The report currently includes 2013 and 2017 bond projects that have or will be completed after to August 2016.
- **MWSBE Participation Report** – The MWSBE report provides a summary of the participation on the 2013 & 2017 Bond funded projects.
- **Project Progress Photos** – Includes photos of active construction projects.
- **Budget Summary Reports** – These reports are by funding source and summarize financial activity to date on the projects. This includes original and current project estimates, committed values, amounts paid to date, balances and monthly expenditures.
- **Change Orders < \$90,000** – This month's approved construction or repair change orders < \$90,000.
- **Expenditure Summary** – Provides a summary of Bond Expenditures by calendar year.