

# Capital Improvement Program

## Monthly Bond Report May 2021



Shamrock Gardens Elementary School



## **CAPITAL PROGRAM SERVICES** Capital Improvement Program

**MAY 2021**  
**MONTHLY BOND REPORT**

### **PROGRAM OVERVIEW**

- Project Management
- Design and Bidding
- Controls
- MWSBE
- Bond Progress Summary
- Project Procurement - Next 90 Days
- Swing Space Utilization
- Bond Summary Schedule
- Project Contractor Teams; Projects in Design/Construction and Substantially Completed/Closed
- School Site Location Maps
  - Elementary Schools
  - Middle Schools
  - High Schools & Specialty Schools

### **PROJECT STATUS REPORT**

### **MWSBE PARTICIPATION REPORT**

### **PROJECT PROGRESS PHOTOS**

### **PROJECT CONTROLS**

- Budget Summary Reports
  - 2013 Bond Series
  - 2017 Bond Series
- Change Orders < \$90,000
- Expenditure Summary

### **GLOSSARY**

# PROGRAM OVERVIEW

## PROJECT MANAGEMENT

The following is a summary of the activity on the bond funded projects in construction during the month of May.

The construction manager for the **Briarwood Elementary Replacement School** continued working multiple trades over the last month to progress the project to completion. The site work contractor installed the remaining asphalt at the bus entry and began grading the front parking lot. The landscaper mobilized and installed the wood fencing along the north side of the project and began installation of sod around the building. MEP (mechanical, electrical and plumbing) trades continued to progress with obtaining above ceiling inspections allowing the ceiling tiles to be installed. Casework, doors and hardware and VCT continued in the classroom wing. Low voltage system installations began throughout the building including fire alarm, intercom, security, video surveillance, etc. The 45-classroom replacement school is scheduled to be occupied in August 2021. Upon completion, demolition and remaining site work will commence and be completed in 2022.

The **CTE projects** at **Harding, South Mecklenburg** and **Olympic** received BOE approval and notice to proceed has been issued to the construction manager to begin work. The Harding project consists of renovations to existing classrooms in the auditorium building to develop a suite of technology classrooms. The project at Olympic includes electrical up fits to the existing carpentry lab which expands the curriculum to include demonstration learning booths for plumbing and electrical trades. The project at South Mecklenburg consists of renovating the old kitchen area into a culinary arts lab and classroom. Occupancy for these projects is scheduled for January 2022.

The construction manager for **East Mecklenburg High School** has completed the structural fill required for the new building pad. The footings are completed and foundation walls are being installed. The underground infrastructure to support the new building is also being coordinated with the public utilities. The new classroom wing is scheduled for occupancy in August 2022.

The **Lansdowne Elementary School** construction manager is focused on building footings. The aggregate piers have been dug and filled to completion allowing the spread footings to begin; foundation walls will follow. New underground storm water piping is progressing across the site. The existing school sanitary sewer lines are being rerouted around the current construction area. Occupancy of the replacement school is scheduled for August 2022. Upon completion of the new building, demolition and remaining site work will commence and will be completed in 2023.

The construction manager for the **Montclair Elementary School** final graded the playfields in preparation for the sod and seed to be installed. The playground equipment was installed and the bus canopy was installed from the new building. The new 45-classroom elementary school building has been occupied. The remaining site work is being completed.

The **New Elementary School (Bain, Lebanon, Piney Grove Relief)** project received BOE approval and notice to proceed has been issued. This new 45-classroom school will be located next to the existing Mint Hill Middle School. The project is scheduled for occupancy in August 2022.

The construction manager for the **New High School Olympic Relief** continued their focus on the parking lots, athletic buildings and the main campus. Exterior metal studs, brick, metal panels and aluminum window/doors systems continued. Interior studs, MEP rough-in and drywall continued in the areas that became available. The 100-classroom relief high school is scheduled to be occupied in August 2022.

The construction manager for the **North Academy of World Languages** (*fka New K-8 Language Immersion North*) project is working through final inspections by Mecklenburg County Building Standards and County Fire. These inspections have identified that the facility will require a booster pump on the fire sprinkler system to alleviate issues

with lower than anticipated water pressure from Charlotte Water. Building modifications are taking place and the pump is scheduled to arrive in mid-June. Furnishings will be allowed once the pump is installed and approved which is scheduled for July. The Hambright Road improvements have started and the existing underground utilities have been relocated. The existing track has been resurfaced and will receive final topping and striping shortly. The project is scheduled to be occupied August 2021.

The **Shamrock Gardens Elementary School** construction manager completed the installation of the footings. The mason continued with the load bearing walls in the multi-purpose room and stairways. The MEP trades focused on below slab rough-ins in preparation of the concrete slabs begin installed. The crane mobilized to begin setting steel early next month. The new 45-classroom replacement elementary school is scheduled to be occupied August 2022.

The construction manager for the **Sharon Elementary School Building Addition** has moved into final finishes. The VCT floors are complete and bathroom wall and floor tile is installed. The architect and design engineers are completing their punch list. The exterior sidewalks and final grading are nearing completion. The cafeteria expansion has completed final finishes and building inspections are ongoing. Occupancy of the 16-classroom addition and cafeteria expansion is scheduled for August 2021.

The construction manager for the **South Academy of International Languages** (*Fka New K-8 Language Immersion South*) worked diligently on the punch list and commissioning items and has the list down to a minimal amount. Furniture, fixtures and equipment began mid-April and continued in May. The staff is currently scheduled to move in mid-June. The project is scheduled to be occupied August 2021.

The **South Pine Academy** (*fka New Elementary School (Nations, Sterling, Steele Creek Relief)*) work continued with finish trades throughout the building. Casework, VCT and final paint was installed in the classroom building. The elevator was completed and installation of the low voltage special systems (fire alarm, intercom, video surveillance, etc.) started. The installation of the sod/seed and fencing started along with the remaining plants. The new 45-classroom relief elementary school is scheduled to be occupied August of 2021.

The **West Charlotte High School** construction manager has multiple MEP crews working throughout the building. This includes in wall rough as well as above ceiling. Conduits have been run in many areas allowing the final wire to be pulled. As areas are made ready the painter is applying prime paint. Window installations have also started. The roofing contractor continues to work across the building completing the single ply membrane. The athletic buildings are taking shape as roofs are complete and brick veneer is progressing. Site contractor continues to maintain erosion control devices and ponds. The project is scheduled to be occupied August 2022. Once the new school is occupied the existing school will be demolished and final site work will take place with final project completion in August 2023.

The **West Mecklenburg High School Gym** construction has moved into finishes. The hard tile bathroom walls and floors are being installed. Most areas have now received the finish paint. The gym wood floor has been installed and sanding and finishing will follow. The site work and hardscapes are nearing completion. Occupancy of the new gymnasium is scheduled for August 2021 the existing gym will then be used as an auxiliary gym.

## DESIGN AND BIDDING

The following is a summary of the activity on the bond funded projects in design and bidding phase during the month of May.

The **Garinger High School Addition/Renovation** and CTE construction manager continues with their procurement activities and is scheduled to deliver the GMP change order for BOE approval in June. The project's scope consists of a two-story building with 16 classrooms and modifications to the existing 300 building. The new building is scheduled to be completed for occupancy in August 2022.

The **Mountain Island School** new gym and classrooms project held a kick-off meeting between CMS, construction manager, project architect and engineers. This project will consist of a building addition which contains middle school gymnasium, art classroom, dance classroom and two classrooms. This project is scheduled to be completed in August 2023.

The **New Elementary School (Elon, Hawk Ridge, Polo Relief)** project has progressed into the schematic design phase. Preliminary work associated with the traffic analysis study is underway. This new 45-classroom school will be located across from the Ardrey Kell High School and is scheduled for occupancy in August 2023.

The **New Elementary School (Hidden Valley, JW Grier, Newell Relief)** project has completed the schematic design phase and submitted to CMS for review comments. Preliminary work associated with the traffic analysis study is underway. This new 45-classroom school will be located next to Northridge Middle School and is scheduled for occupancy in August 2023.

The **New Elementary School (Windsor, Winterfield, Idlewild Relief)** architect continues to progress in the schematic design phase. Due diligence activities related to the site acquisition are scheduled for June, these activities are required to allow design to progress. This new 45-classroom school facility is scheduled for occupancy in August 2023.

The **New High School (South, Ardrey Kell Relief)** project continues in the design development phase. CDOT has submitted responses to the traffic analysis study and additional information has been provided for CDOT's review and comment. Due diligence, land acquisition and rezoning discussions activities continue to progress. This project consists of a new 100-classroom high school with athletic play fields and stadium.

## CONTROLS

Expenditures for the month of May were \$22.3M. This brings our fiscal year to date total to \$202.3M against the 2021 fiscal year cash flow projection of \$225M. The Controls team continues the reconciliation and closeout of completed 2013 and 2017 bond projects. Available funding is being accumulated to be used for future capital needs.

Board of Education approval was received on May 11, 2021, for the construction phase for the New Elementary School (Bain, Lebanon, Piney Grove Relief) Project and Olympic, Harding, and South Mecklenburg HS CTE Renovations.

The Controls team continues to submit notices of potential changes at school sites so senior staff can adequately evaluate any issues. Additionally, the Controls team continues the processing of contracts, invoices, preparing notices of potential change, change orders, pay applications and check requests for projects under construction. Captured construction cost data is used to prepare financial reports such as detailed cost reports, budget summaries, reconciliation to CMS books, revisions to and updated cash flows and complete special financial requests by CMS

and Mecklenburg County. This process, along with data compilation and management, allows senior staff to provide the proper guidance/direction and accurate information to the program stakeholders.

## MWSBE

As of May 2021 the overall MWSBE utilization percentage related to design and construction of the 2017 bond projects is 47.76% which includes 20.32% participation by minority contractors, 26.66% by women contractors and .78% participation by small business contractors. This accounts for more than \$265 million of utilization by Minority, Women and Small Business Contractors.

The Diversity & Inclusion Office of Charlotte-Mecklenburg Schools continued to conduct several individual virtual orientations with new MWSBE contractors and prime contractors. In addition, team members also attended/hosted the following outreach sessions/pre-bid meetings and/or workforce development opportunities:

- Shared CMS Best Practices with Central Piedmont Community College
- Supplier Diversity & Its Economic Impact meeting
- Women's Business Center & Small Business Transportation Center Virtual Trade Fair
- Latin American Chamber of Commerce Lunch & Learn: How to do business with CMS
- Crowns of Enterprise Awards

### Good-Faith Efforts:

- Construction Manager at Risk subcontractor dispute resolution
- Reviewed Architecture design submittals

### Commendations:

- Congratulations to the following Crowns of Enterprise Award Honorees: BSI Solutions, Inc. – Minority Business of the Year, A Home on the Go – Women Business of the Year, Asfalis Advisors – Small Business of the Year, McFarland Construction – Prime Contractor of the Year, Southern Piedmont Community College – Diversity Advocate of the Year and Beyond Decadence – Rising Start of the Year. Award winners were selected for sound business strategies while driving economic development in the Charlotte-Mecklenburg region.

Over the next month, team members will continue to work with contractors interested in bidding on the upcoming school projects utilizing various virtual tools to communicate. Contractors are encouraged to review bid advertisements in Charlotte Observer and register as a vendor on the North Carolina Interactive Purchasing System for notification of the various opportunities.

## BOND PROGRESS SUMMARY As of May 2021

Funding Source and Value		Amount Committed/Pending	Amount Paid to Date	Amount Expended This Period
'13 Bond	\$301,699,770	\$289,476,962	\$288,015,670	<b>\$9,639</b>
'17 Bond	\$1,019,279,985	\$623,022,741	\$349,298,405	<b>\$22,247,106</b>
<b>Grand Total</b>	<b>\$1,320,979,755</b>	<b>\$912,499,703</b>	<b>\$637,314,075</b>	<b>\$22,256,745</b>

---

## UPCOMING MAJOR CONSTRUCTION PROCUREMENT DATES *Three Month Look Ahead*

### School Name

### Bid Dates\*

**Garinger High School Addition/Renovation and CTE**  
*(Bids managed by Balfour Beatty)*

**May 2021**

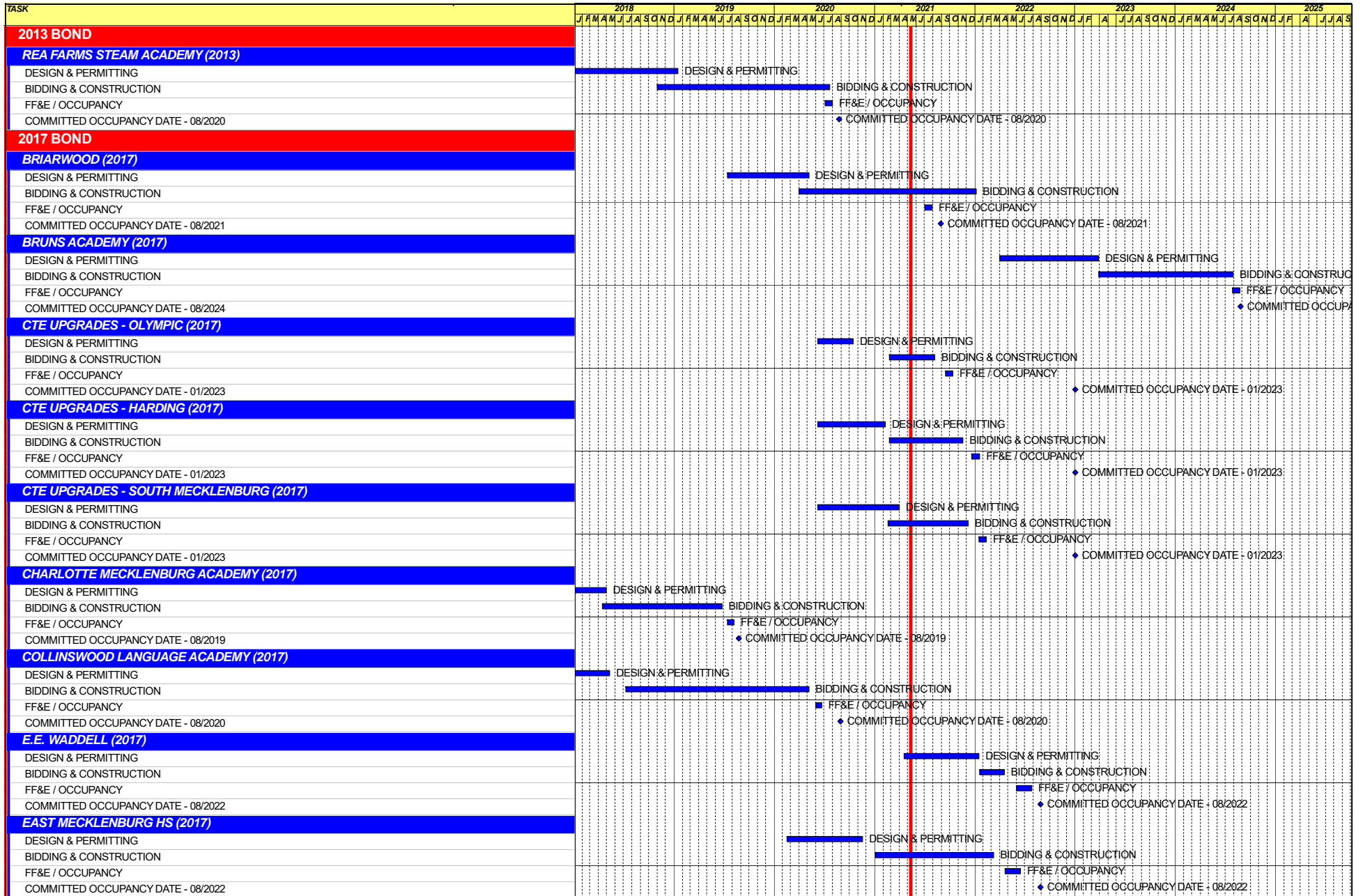
*\* NOTE: Work In Progress...Dates Subject to Change.*

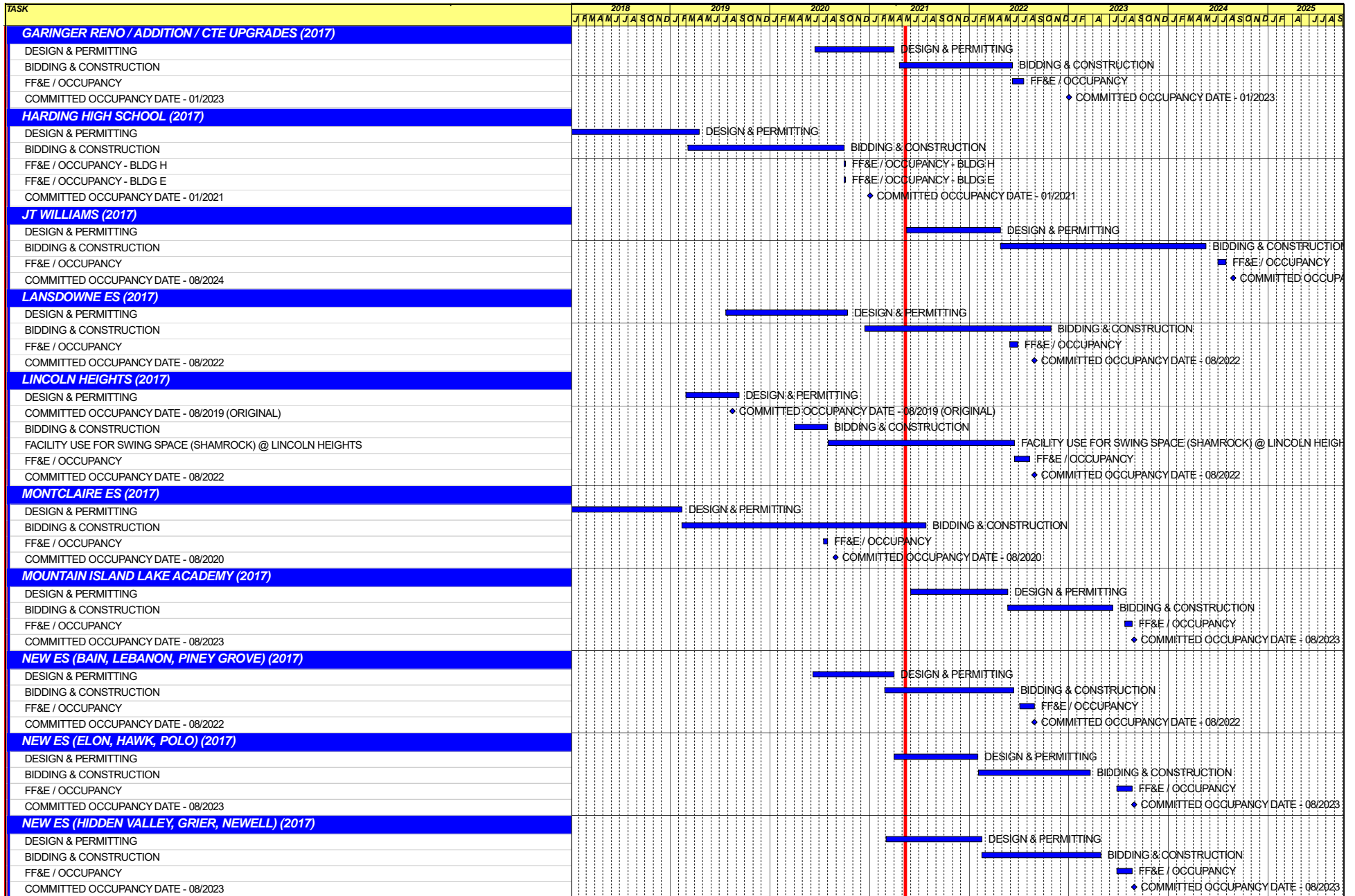
## SWING SPACE UTILIZATION

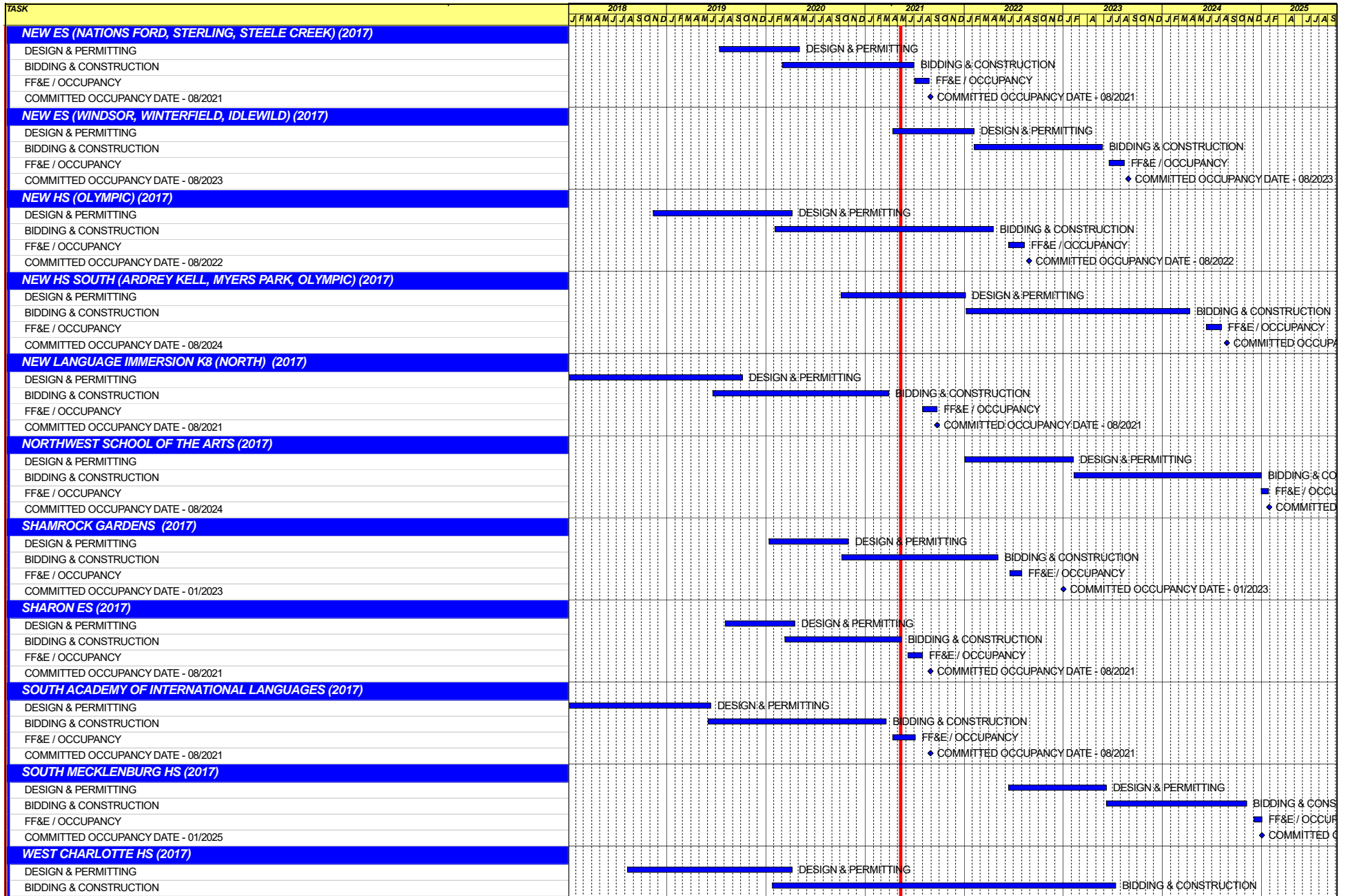
Creating a temporary space for students and staff to occupy during construction on a school’s campus has proven to be beneficial to the project’s schedule and cost and overall safety and efficiency of school operations. When the renovation or expansion of a facility is performed and the facility must remain functionally operational, there are benefits to the owner in using swing space.

We have successfully utilized both onsite and offsite swings. The most desirable swings are “offsite” ones. Onsite swing using mobiles or modulars, likewise has been successfully used. The following is a summary of current swing options planned or in use.

<u>School</u>	<u>No. of Mobiles/Relocation Site</u>	<u>Status (From – To)</u>
Shamrock	Lincoln Heights	August 2020 – August 2022







TASK	2018				2019				2020				2021				2022				2023				2024				2025							
FF&E / OCCUPANCY	J	F	M	A	M	J	J	A	S	O	N	D	J	F	M	A	M	J	J	A	S	O	N	D	J	F	M	A	M	J	J	A	S	O	N	D
COMMITTED OCCUPANCY DATE - 08/2022																																				
WEST MECK HS GYM (2017)																																				
DESIGN & PERMITTING																																				
BIDDING & CONSTRUCTION																																				
FF&E / OCCUPANCY																																				
COMMITTED OCCUPANCY DATE - 08/2021																																				
																								</												

# Capital Improvements Program

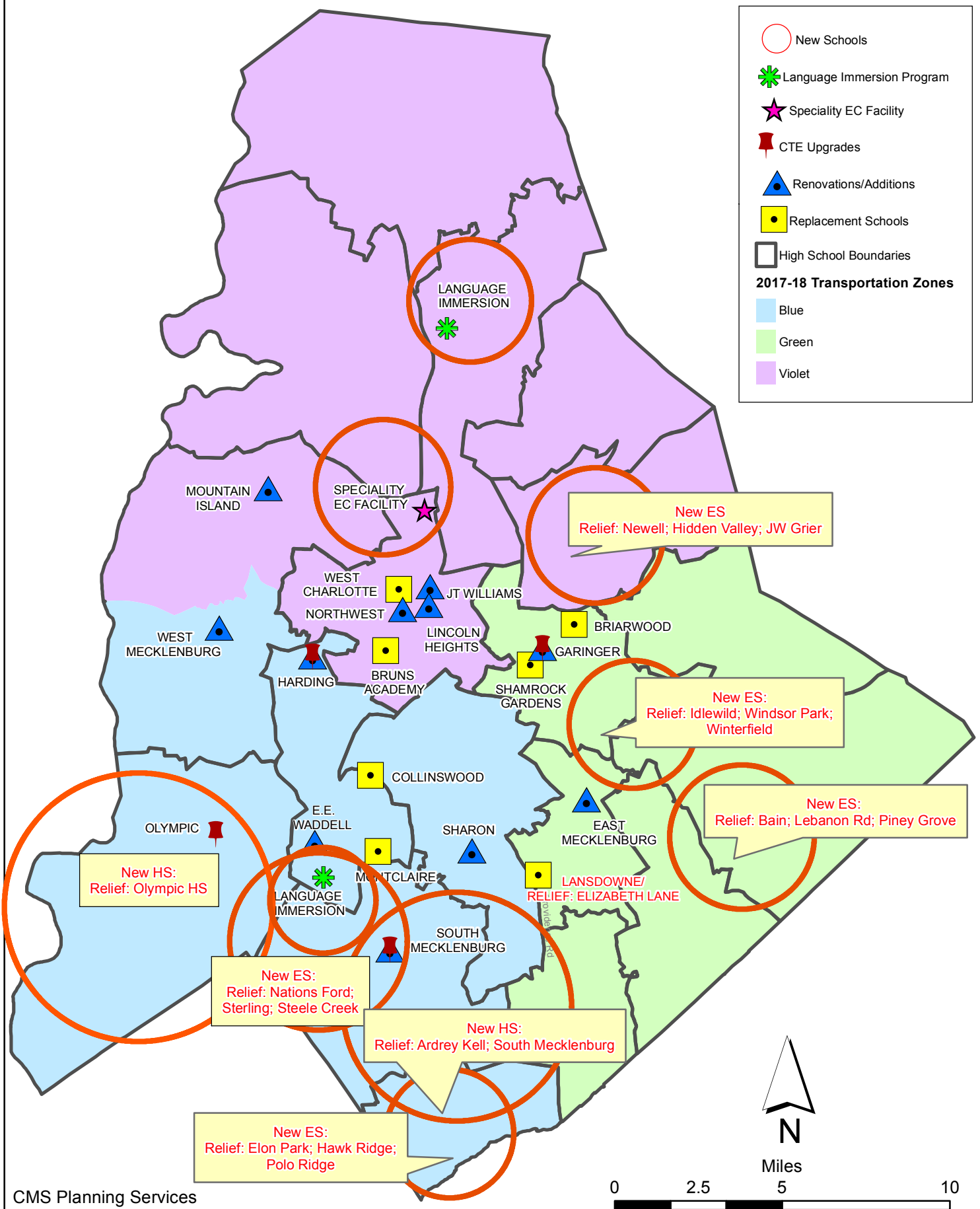
## *Projects in Design or Under Construction*

School	Architect	General Contractor/CM
<b>Projects In Design</b>		
Garinger Addition/Renovation & CTE (17)	LS3P	Balfour Beatty
Lincoln Heights Repurpose (17)	Neighboring Concepts	TBD
Mountain Island School (17)	ADW	Whiting-Turner
New HS (South, Ardrey) (17)	Ratio	Messer
New ES (Elon,Hawk Ridge, Polo Ridge) (17)	Little Diversified	Balfour Beatty
New ES (Hidden Valley, JW Grier, Newell) (17)	ADW	Edifice, Inc.
New ES (Windsor, Winterfield, Idlewild) (17)	Neighboring Concepts	Rodgers-Holt Brothers
<b>Projects in Bid/Award/Construction Phase</b>		
Briarwood Elementary School Replacement (17)	ADW	New Atlantic
CTE (Harding, Olympic, South) (17)	MPS	Branch Brownstone
East Mecklenburg High School (17)	Morris Berg	Turner Construction
Lansdowne Elementary School Replacement (17)	Perkins Eastman	Edifice, Inc.
Montclair Elementary School (17)	WHN	Messer
New ES (Bain, Lebanon Rd, Piney Grove) (17)	FWA	Metcon
New High School (Olympic Relief) (17)	Little Diversified	Edifice, Inc.
North Academy of World Languages (17)	ADW	New Atlantic
Shamrock Gardens Elementary School Replacement (17)	Little Diversified	Rodgers-Holt Brothers
Sharon Elementary School (17)	Clark Nexsen	Samet
South Academy of International Languages (17)	FWA	Messer
South Pine Academy (17)	FWA	Metcon
West Charlotte High School (17)	LS3P	Rodgers-Holt Brothers
West Mecklenburg Gym (17)	Moseley	Barnhill/DA Everett

**Capital Improvements Program**  
***Projects Substantially Completed/Closed \****

School	Turnover Year	Architect	General Contractor
Collinswood Language Academy (17)	Aug-20	Perkins Eastman	Turner Construction
Harding High School Renovation (17)	Aug-20	SFLA	Barnhill Contracting
Rea Farms STEAM Academy (13)	Aug-20	Little Diversified	Balfour Beatty
Ashley Park K-8 Conversion (13)	Aug-19	ADW	Turner Construction
Druid Hills K-8 Conversion (13)	Aug-19	ADW	Edifice, Inc.
Selwyn Elementary (13)	Aug-19	Clark Nexsen	Balfour Beatty
Charlotte Mecklenburg Academy (17)	Aug-19	KSQ	Edifice, Inc.
Davidson K-8 (13)	Aug-19	Little Diversified	Gilbane
CTE - North Mecklenburg High (13)	Aug-19	LS3P	Shiel Sexton
CTE - Garinger (13)	Mar-19	LS3P	Hostetter & Son
CTE - Independence (13)	Mar-19	LS3P	D.E. Brown
CTE - West Mecklenburg (13)	Mar-19	LS3P	Hostetter & Son
Charlotte East Language Academy (13)	Aug-18	Morris Berg	Edifice, Inc
Myers Park High School Phase 3 (13)	Aug-18	Boomerang Design	BE&K
Northridge Middle (13)	Aug-18	Morris Berg	Barnhill Contracting
Myers Park High Bldg 2 (13)	Feb-18	Boomerang Design	BE&K
East Mecklenburg High Addition (13)	Jan-18	Bergman (fna Gantt Huberman)	Edifice, Inc.
J.M. Alexander Middle (13)	Aug-17	FWA Group	Balfour Beatty
Northwest School of the Arts Renovation (13)	Aug-17	Moseley	Turner Construction
Renaissance West STEAM Academy (13)	Aug-17	Little Diversified	Rodgers Construction
South Mecklenburg High Addition (13)	Jul-17	SFLA	Barnhill Contracting
Myers Park High Bldg 1 (13)	Sep-16	Boomerang	KBR
Statesville Road Elementary (13)	Aug-16	ADW	JE Dunn
Nations Ford Elementary (13)	Aug-16	Wash Hatem Nelson	Messer Construction
Olympic High Addition (13)	Aug-16	McMillan, Pazdan, Smith	Turner Construction
Lawrence Orr Elementary (07)	Aug-15	Cort Architectural Group	DH Griffin/Metcon
Parkside Elementary (07)	Aug-15	Wash Hatem Nelson	Clancy & Theys
Hawthorne High Renovations (07)	Aug-15	Morris-Berg	Balfour Beatty
Newell Elementary (07)	Aug-15	Perkins Eastman	New Atlantic Contracting
Ranson Middle (07)	Aug-15	Morris-Berg	Edifice, Inc.
Vance High	Jan-15	LS3P	Matthews Construction Co., Inc.
Garinger High - Renovations/Addition	Aug-14	Adams Group Architects	Turner Construction
Olympic High - Stadium	Aug-14	Site Solutions	Turner Construction
West Mecklenburg High - Stadium	Aug-14	Site Solutions	Turner Construction
Collinswood - Indoor Air Quality	Aug-14	PEA	The Bowers Group
Lansdowne - Indoor Air Quality	Aug-14	AeroRaq	Tyler 2
McKee Road - Indoor Air Quality	Aug-14	McCracken & Lopez	Godfrey Construction
Garinger High - Track & Field	Jul-14	Site Solutions	Turner Construction
Independence High - Gym	Jun-14	Shook Kelly	Shelco, Inc. (CM)
Palisades Park Elementary	May-14	Wash Hatem Nelson	Clancy & Theys
East Mecklenburg High Auditorium	Jan-14	Gantt Huberman Associates	Godfrey Construction Co., Inc.
Pineville Elementary	Aug-13	Cort Architectural Group	Beam Construction Co., Inc.
Bain Elementary	Aug-13	ADW	Edison Foard
Grand Oak Elementary	Aug-13	ADW	Matthews Construction Co., Inc.
McClintock Middle	Aug-13	FWA Group	Shelco, Inc.
Sedgefield Elementary Demolition	Oct-12	Cort Architectural Group	EHG, LLC
Alexander Graham Middle Gym Reno	Aug-12	MBAJ Architecure	Edison Foard
First Ward - Demolition & Bus lot	Aug-12	MBAJ Architecure	T.K. Browne
South Meck High Parking Lot Renovation	Aug-12	Little Diversified	Sorenson Gross
Cochrane Middle - Kitchen	Aug-11	MBAJ Architecure	Sorenson Gross
Hough High	Aug-10	Little Diversified	Rodgers Construction
Rocky River High	Aug-10	Little Diversified	Balfour Beatty

# CMS Capital Improvement Plan 2017 Bond Projects



# PROJECT STATUS REPORT



## Monthly Project Status 2017 Bond Summary May 2021

Project	Current Project Estimate	Project Scope	** Occupy On	Design Phase	Construction Progress	Project Status
Briarwood Elementary School (17)	\$ 31,962,730	45-classroom replacement facility; replaces school built in 1956.	August 2021	Complete	74 %	The construction manager for the Briarwood Elementary Replacement School continued working multiple trades over the last month to progress the project to completion. The site work contractor installed the remaining asphalt at the bus entry and began grading the front parking lot. The landscaper mobilized and installed the wood fencing along the north side of the project and began installation of sod around the building. MEP (mechanical, electrical and plumbing) trades continued to progress with obtaining above ceiling inspections allowing the ceiling tiles to be installed. Casework, doors and hardware and VCT continued in the classroom wing. Low voltage system installations began throughout the building including fire alarm, intercom, security, video surveillance, etc.
Bruns Academy (17)	\$ 39,784,927	New 45-classroom elementary school (K-5); replaces old school built in 1969.	August 2024	Not Started	0 %	This project is scheduled to start design Spring 2022.
Career and Technology Education (17)	\$ 10,159,765	Phase I CTE upgrades at Olympic, Harding, Garinger and South Mecklenburg.	January 2023	Construction Documents	0 %	The CTE projects at Harding, South Mecklenburg and Olympic received BOE approval and notice to proceed has been issued to the construction manager to begin work. The Harding project consists of renovations to existing classrooms in the auditorium building to develop a suite of technology classrooms. The project at Olympic includes electrical up fits to the existing carpentry lab which expands the curriculum to include demonstration learning booths for plumbing and electrical trades. The project at South Mecklenburg consists of renovating the old kitchen area into a culinary arts lab and classroom.

# Monthly Project Status

2017 Bond Summary

May 2021

Project	Current Project Estimate	Project Scope	** Occupy On	Design Phase	Construction Progress	Project Status
Charlotte-Mecklenburg Academy (17)	\$ 18,079,506	New EC school located on the old Statesville Elementary School site.	August 2019	Complete	100 %	Project is complete.
Collinswood Language Academy (17)	\$ 42,272,540	New 63-classroom K-8 facility on the site of the Smith Family Center.	August 2020	Complete	100 %	Project is complete.
E.E. Waddell (17)	\$ 5,137,367	Repurpose current E.E. Waddell to reopen as a magnet high school.	August 2023	Schematic	0 %	Planning in preparation for design start in 2nd Qtr 2021. Based on Board approval in May 2021 the occupancy date has been moved to 2023.
East Mecklenburg High School (17)	\$ 15,058,594	This project will provide for the design, and construction of a new 30 classroom building.	August 2022	Complete	10 %	The construction manager for East Mecklenburg High School has completed the structural fill required for the new building pad. The footings are completed and foundation walls are being installed. The underground infrastructure to support the new building is also being coordinated with the public utilities.
Garinger High School (17)	\$ 14,486,979	Project includes the design and construction for renovations of 300 building and a new 16 classroom building.	January 2023	Complete	0 %	The Garinger High School Addition/Renovation and CTE construction manager continues with their procurement activities and is scheduled to deliver the GMP change order for BOE approval in June. The project's scope consists of a two-story building with 16 classrooms and modifications to the existing 300 building.
Harding High School (17)	\$ 14,530,263	Renovation of the kitchen, cafeteria, existing gym (aux) and the addition of a new gym.	August 2020	Complete	99 %	Construction Manager has change items that will be completed summer 2021 and is finalizing financial reconciliation.
JT Williams (17)	\$ 15,732,600	Project includes building renovations to J.T. Williams Montessori magnet.	August 2024	Pre-Schematic	0 %	Design is scheduled to start summer of 2021.
Lansdowne Elementary School (17)	\$ 37,128,834	New 45-classroom school; replaces old school built in 1959 and relieve crowding at Elizabeth Lane ES.	August 2022	Complete	8 %	The Lansdowne Elementary School construction manager is focused on building footings. The aggregate piers have been dug and filled to completion allowing the spread footings to begin; foundation walls will follow. New underground storm water piping is progressing across the site. The existing school sanitary sewer lines are being rerouted around the current construction area.

# Monthly Project Status

2017 Bond Summary

May 2021

Project	Current Project Estimate	Project Scope	** Occupy On	Design Phase	Construction Progress	Project Status
Lincoln Heights Elementary School (17)	\$ 4,588,675	Repurpose and reopen as magnet school.	August 2023	Construction Documents	0 %	Shamrock Gardens will be utilizing the Lincoln Heights Elementary building as swing space August 2020 - August 2022. Playgrounds were replaced and new digital signage was installed summer 2020. Based on Board approval in May 2021 the occupancy date has been moved to 2023.
Montclair Elementary School (17)	\$ 28,559,390	New 45-classroom replacement facility replacing school built in 1958.	August 2020	Complete	98 %	The construction manager for the Montclair Elementary School final graded the playfields in preparation for the sod and seed to be installed. The playground equipment was installed and the bus canopy was installed from the new building. The new 45-classroom elementary school building has been occupied. The remaining site work is being completed.
Mountain Island Lake Academy (17)	\$ 10,488,400	K-8 Phase 2 - New gymnasium and specialty classrooms.	August 2023	Pre-Schematic	0 %	The Mountain Island School new gym and classrooms project held a kick-off meeting between CMS, construction manager, project architect and engineers. This project will consist of a building addition which contains middle school gymnasium, art classroom, dance classroom and two classrooms.
New Elementary School (Bain, Lebanon, Piney Grove) (17)	\$ 31,455,951	New 45-classroom elementary school; relieves crowding at Bain, Lebanon Road, Piney Grove.	August 2022	Complete	0 %	The New Elementary School (Bain, Lebanon, Piney Grove Relief) project received BOE approval and notice to proceed has been issued. This new 45-classroom school will be located next to the existing Mint Hill Middle School.
New Elementary School (Elon, Hawk Ridge, Polo Relief) (17)	\$ 43,476,676	New 45-classroom elementary school to relieve Elon, Hawk Ridge, Polo.	August 2023	Schematic	0 %	The New Elementary School (Elon, Hawk Ridge, Polo Relief) project has progressed into the schematic design phase. Preliminary work associated with the traffic analysis study is underway.
New Elementary School (Hidden Valley, JW Grier, Newell) (17)	\$ 34,697,022	New 45-classroom elementary school; relieves overcrowding at Hidden Valley, J.W. Grier, Newell.	August 2023	Schematic	0 %	The New Elementary School (Hidden Valley, JW Grier, Newell Relief) project has completed the schematic design phase and submitted to CMS for review comments. Preliminary work associated with the traffic analysis study is underway.

# Monthly Project Status

2017 Bond Summary

May 2021

Project	Current Project Estimate	Project Scope	** Occupy On	Design Phase	Construction Progress	Project Status
New Elementary School (Windsor, Winterfield, Idlewild Relief) (17)	\$ 37,197,022	New 45-classroom elementary school to relieve Windsor, Winterfield, and Idlewild ES.	August 2023	Schematic	0 %	The New Elementary School (Windsor, Winterfield, Idlewild Relief) architect continues to progress in the schematic design phase. Due diligence activities related to the site acquisition are scheduled for June, these activities are required to allow design to progress.
New High School (17) (Olympic Relief)	\$ 109,908,793	New 100 classroom high school; relieves crowding at Olympic High School.	August 2022	Complete	51 %	The construction manager for the New High School Olympic Relief continued their focus on the parking lots, athletic buildings and the main campus. Exterior metal studs, brick, metal panels and aluminum window/doors systems continued. Interior studs, MEP rough-in and drywall continued in the areas that became available.
New High School (South, Ardrey) (17)	\$ 154,930,460	New 100 classroom high school to relieve South Mecklenburg, Ardrey Kell and Myers Park HS.	August 2024	Design Development	0 %	The New High School (South, Ardrey Kell Relief) project continues in the design development phase. CDOT has submitted responses to the traffic analysis study and additional information has been provided for CDOT's review and comment. Due diligence, land acquisition and rezoning discussions activities continue to progress.
North Academy of World Languages	\$ 43,359,367	New 66 classroom K-8 Language Immersion facility located on the old J.M. Alexander Middle School site.	August 2021	Complete	98 %	The construction manager for the North Academy of World Languages (fka New K-8 Language Immersion North) project is working through final inspections by Mecklenburg County Building Standards and County Fire. These inspections have identified that the facility will require a booster pump on the fire sprinkler system to alleviate issues with lower than anticipated water pressure from Charlotte Water. Building modifications are taking place and the pump is scheduled to arrive in mid-June. Furnishings will be allowed once the pump is installed and approved which is scheduled for July. The Hambright Road improvements have started and the existing underground utilities have been relocated. The existing track has been resurfaced and will receive final topping and striping shortly.
Northwest School of the Arts (17)	\$ 20,467,000	Replace classroom building built in 1952 and build classroom addition that supports program.	August 2024	Not Started	0 %	Project to be funded by the County in FY22, planning underway.

# Monthly Project Status

2017 Bond Summary

May 2021

Project	Current Project Estimate	Project Scope	** Occupy On	Design Phase	Construction Progress	Project Status
Shamrock Gardens Elementary School (17)	\$ 35,358,351	New 45-classroom replacement facility.	August 2022	Complete	13 %	The Shamrock Gardens Elementary School construction manager completed the installation of the footings. The mason continued with the load bearing walls in the multi-purpose room and stairways. The MEP trades focused on below slab rough-ins in preparation of the concrete slabs begin installed. The crane mobilized to begin setting steel early next month.
Sharon Elementary School (17)	\$ 9,475,862	Add 16 classroom building and increase capacity of cafeteria.	August 2021	Complete	95 %	The construction manager for the Sharon Elementary School Building Addition has moved into final finishes. The VCT floors are complete and bathroom wall and floor tile is installed. The architect and design engineers are completing their punch list. The exterior sidewalks and final grading are nearing completion. The cafeteria expansion has completed final finishes and building inspections are ongoing.
South Academy of International Languages (fka New K-8 School (South) (17)	\$ 42,959,367	New 71 classroom K-8 Language Immersion facility located on the old Nations Ford Elementary School site.	August 2021	Complete	99 %	The construction manager for the South Academy of International Languages (FNA New K-8 Language Immersion South) worked diligently on the punch list and commissioning items and has the list down to a minimal amount. Furniture, fixtures and equipment began mid-April and continued in May. The staff is currently scheduled to move in mid-June.
South Mecklenburg High School (17)	\$ 15,622,927	Renovate/replace two classroom buildings built in 1958 to upgrade learning conditions.	January 2025	Not Started	0 %	Project to be funded by the County in FY22, planning underway.
South Pine Academy	\$ 31,572,550	New 45-classroom elementary school to relieve Nations Ford, Sterling, and Steele Creek.	August 2021	Complete	82 %	The South Pine Academy (fka New Elementary School (Nations, Sterling, Steele Creek Relief) work continued with finish trades throughout the building. Casework, VCT and final paint was installed in the classroom building. The elevator was completed and installation of the low voltage special systems (fire alarm, intercom, video surveillance, etc.) started. The installation of the sod/seed and fencing started along with the remaining plants.

# Monthly Project Status

2017 Bond Summary

May 2021

Project	Current Project Estimate	Project Scope	** Occupy On	Design Phase	Construction Progress	Project Status
West Charlotte High School (17)	\$ 109,977,166	New 100 classroom school to replace current facility built in 1954.	August 2022	Complete	47 %	The West Charlotte High School construction manager has multiple MEP crews working throughout the building. This includes in wall rough as well as above ceiling. Conduits have been run in many areas allowing the final wire to be pulled. As areas are made ready the painter is applying prime paint. Window installations have also started. The roofing contractor continues to work across the building completing the single ply membrane. The athletic buildings are taking shape as roofs are complete and brick veneer is progressing. Site contractor continues to maintain erosion control devices and ponds.
West Mecklenburg High School (17)	\$ 10,850,902	Provide new gymnasium, the existing gymnasium will become the auxilliary.	August 2021	Complete	83 %	The West Mecklenburg High School Gym construction has moved into finishes. The hard tile bathroom walls and floors are being installed. Most areas have now received the finish paint. The gym wood floor has been installed and sanding and finishing will follow. The site work and hardscapes are nearing completion.

# MONTHLY PROJECT PHOTOS

## PROJECT PROGRESS PHOTOS

---



Briarwood Elementary School Replacement

## PROJECT PROGRESS PHOTOS

---



Briarwood Elementary School Replacement



Briarwood Elementary School Replacement

## PROJECT PROGRESS PHOTOS

---



Briarwood Elementary School Replacement



Montclair Elementary School Replacement



**Messer**  
WeAreBuilding.

CMS Montclair Elementary School

Image # 74  
Date : 04.21.2021  
Photo 888.542.0231

## Montclair Elementary School Replacement

## PROJECT PROGRESS PHOTOS

---



North Academy of World Languages  
(fka K-8 Language Immersion North)

## PROJECT PROGRESS PHOTOS

---



North Academy of World Languages  
(fka K-8 Language Immersion North)

## PROJECT PROGRESS PHOTOS



North Academy of World Languages  
(fka K-8 Language Immersion North)

## PROJECT PROGRESS PHOTOS

---



North Academy of World Languages  
(fka K-8 Language Immersion North)

# PROJECT PROGRESS PHOTOS

---



South Academy of International Languages  
(fka K-8 Language Immersion South)

## PROJECT PROGRESS PHOTOS



**South Academy of International Languages**  
(fka K-8 Language Immersion South)

## PROJECT PROGRESS PHOTOS



South Academy of International Languages  
(fka K-8 Language Immersion South)

## PROJECT PROGRESS PHOTOS



**Messer**  
WeAreBuilding.

CMS K-8 South

Image # 71  
Date : 04.21.2021  
888.542.0231

South Academy of International Languages  
(fka K-8 Language Immersion South)

# PROJECT PROGRESS PHOTOS

---



New High School Olympic Relief

## PROJECT PROGRESS PHOTOS

---



New High School Olympic Relief

## PROJECT PROGRESS PHOTOS

---



New High School Olympic Relief

## PROJECT PROGRESS PHOTOS

---



New High School Olympic Relief

## PROJECT PROGRESS PHOTOS

---



New High School Olympic Relief

# PROJECT PROGRESS PHOTOS

---



West Charlotte High School Replacement



West Charlotte High School Replacement

## PROJECT PROGRESS PHOTOS



West Charlotte High School Replacement



West Charlotte High School Replacement

## PROJECT PROGRESS PHOTOS



West Charlotte High School Replacement

## PROJECT PROGRESS PHOTOS



**South Pine Academy**  
(fka New ES Nations Ford, Sterling, Steele Creek)

## PROJECT PROGRESS PHOTOS



**South Pine Academy**  
(fka New ES Nations Ford, Sterling, Steele Creek)

## PROJECT PROGRESS PHOTOS



**South Pine Academy**  
(fka New ES Nations Ford, Sterling, Steele Creek)



**South Pine Academy**  
(fka New ES Nations Ford, Sterling, Steele Creek)

## PROJECT PROGRESS PHOTOS

---



Sharon Elementary School Addition

## PROJECT PROGRESS PHOTOS

---



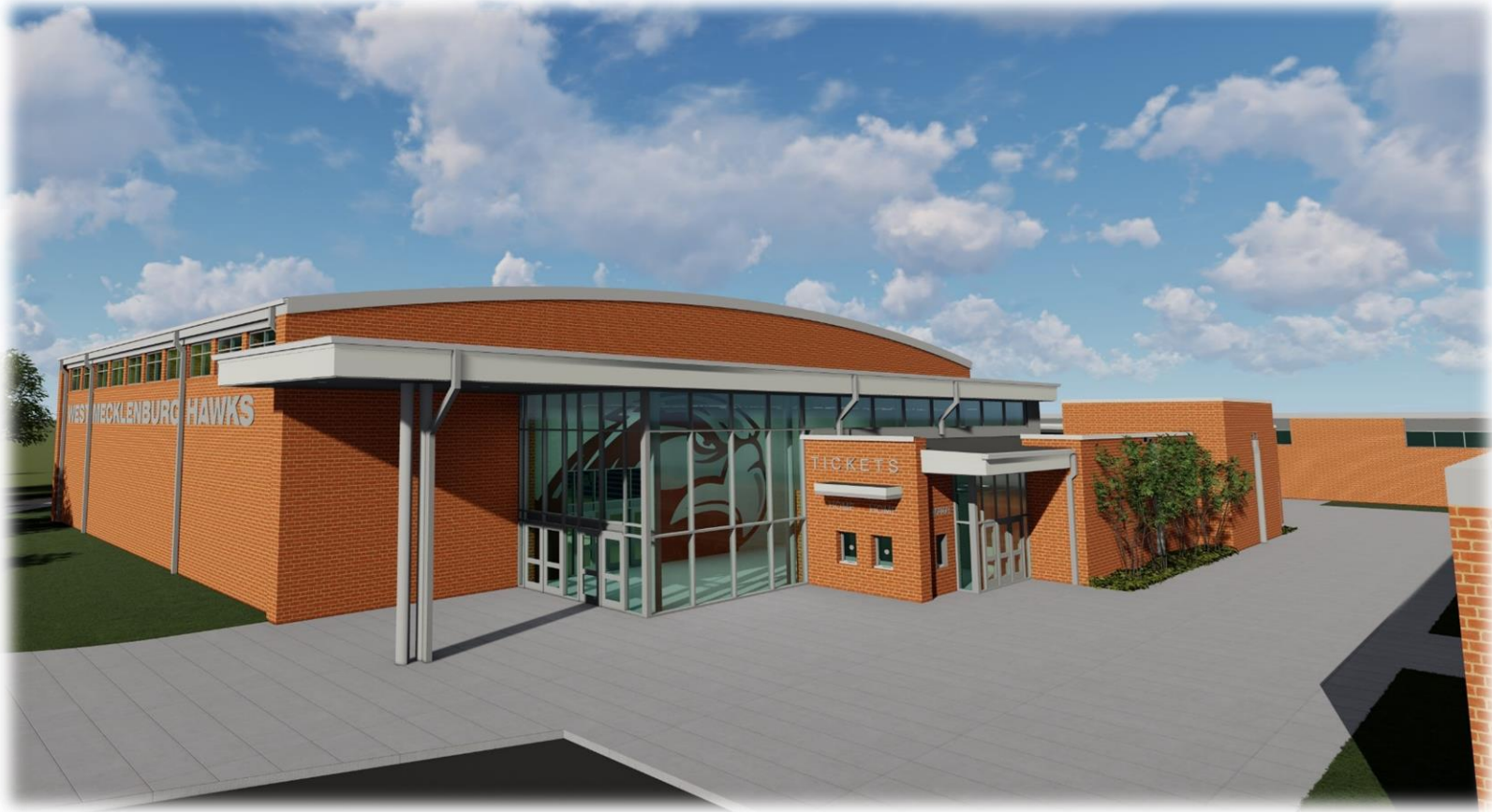
Sharon Elementary School Addition



Sharon Elementary School Addition

## PROJECT PROGRESS PHOTOS

---



West Mecklenburg High School Gym

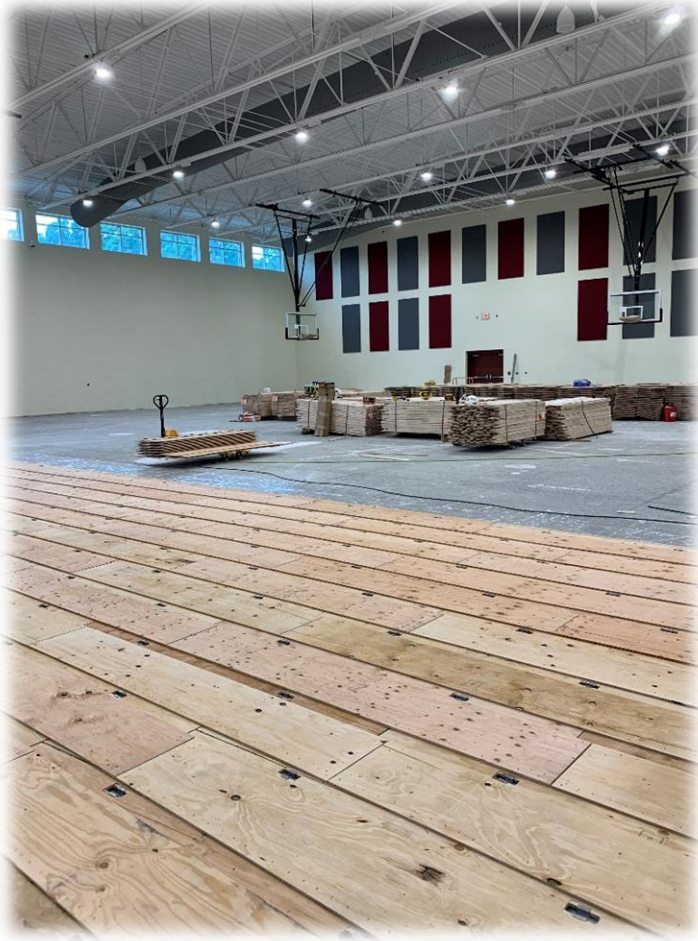
## PROJECT PROGRESS PHOTOS

---



West Mecklenburg High School Gym

## PROJECT PROGRESS PHOTOS



West Mecklenburg High School Gym

# PROJECT PROGRESS PHOTOS

---



Shamrock Gardens Elementary School

## PROJECT PROGRESS PHOTOS

---



Shamrock Gardens Elementary School

## PROJECT PROGRESS PHOTOS

---



Shamrock Gardens Elementary School

## PROJECT PROGRESS PHOTOS

---



Lansdowne Elementary School

## PROJECT PROGRESS PHOTOS

---



Lansdowne Elementary School

## PROJECT PROGRESS PHOTOS

---



Lansdowne Elementary School

## PROJECT PROGRESS PHOTOS

---



East Mecklenburg High School

## PROJECT PROGRESS PHOTOS

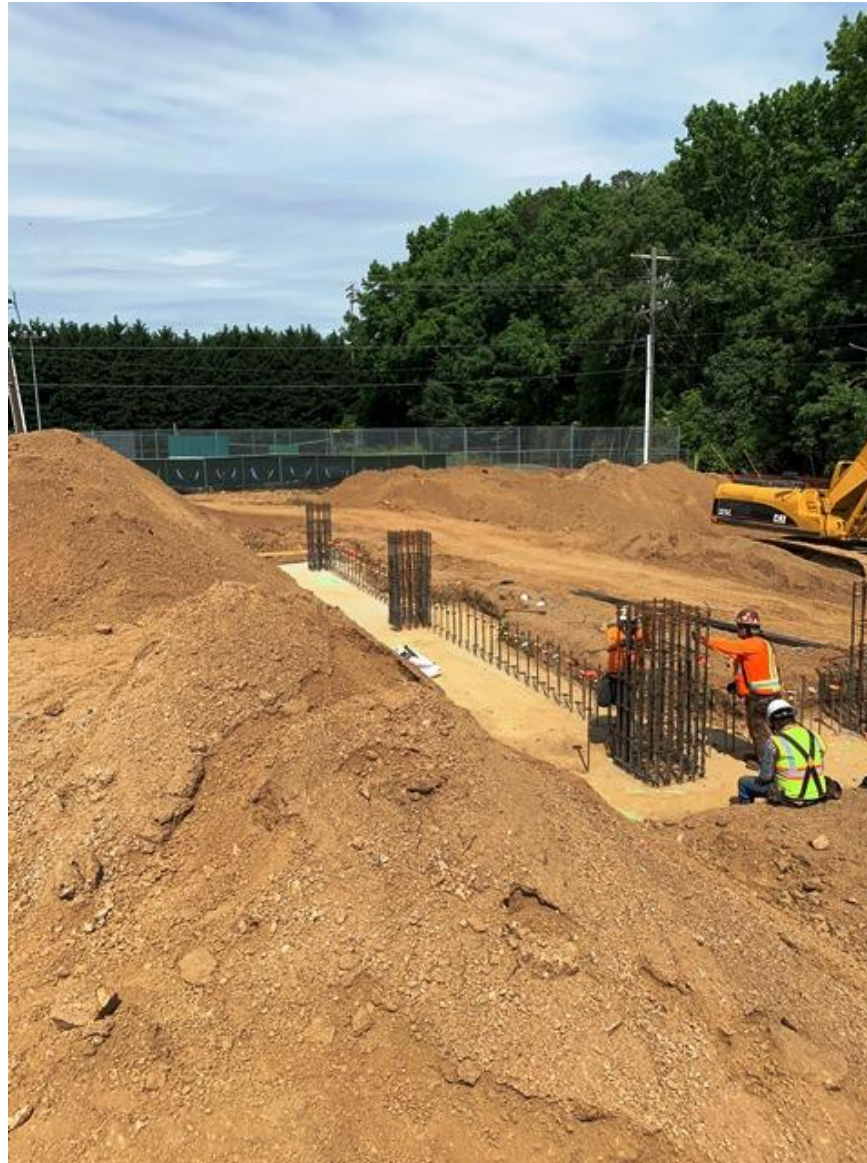
---



East Mecklenburg High School

## PROJECT PROGRESS PHOTOS

---



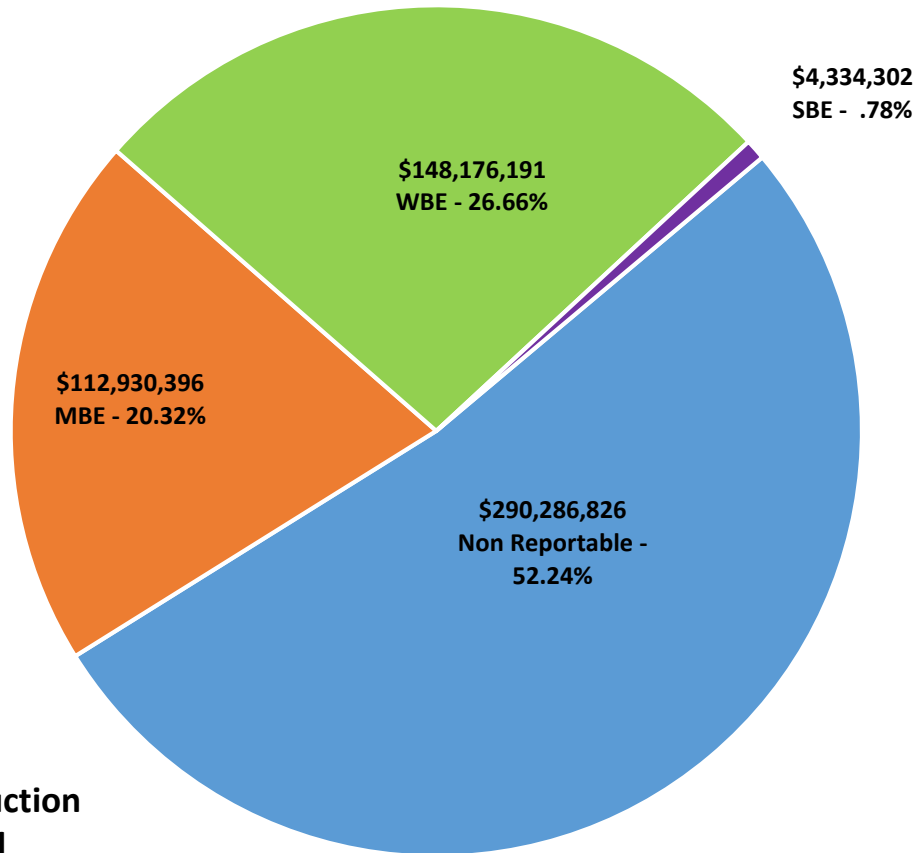
East Mecklenburg High School

# MWSBE PARTICIPATION REPORT

Facility	Contract Amount	African American MBE\$	%	Other MBE \$	%	Total MBE \$	%	Other WBE \$	%	Other SBE \$	%	Total	%
<u>Briarwood Elementary School (17)</u>	\$28,696,836	\$3,521,005	12.27%	\$2,326,100	8.11%	\$5,847,105	20.38%	\$1,111,985	3.87%	\$82,000	0.29%	\$7,041,090	24.54%
<u>Bruns Academy (17)</u>	\$0	\$0	#Num!	\$0	#Num!	\$0	#Num!	\$0	#Num!	\$0	#Num!	\$0	#Num!
<u>Career and Technology Education (17)</u>	\$5,909,090	\$666,147	11.27%	\$311,282	5.27%	\$977,429	16.54%	\$214,326	3.63%	\$13,585	0.23%	\$1,205,340	20.40%
<u>Charlotte-Mecklenburg Academy (17)</u>	\$17,035,852	\$198,536	1.17%	\$1,029,192	6.04%	\$1,227,728	7.21%	\$872,755	5.12%	\$13,200	0.08%	\$2,113,683	12.41%
<u>Collinswood Language Academy (17)</u>	\$38,633,550	\$412,763	1.07%	\$1,786,047	4.62%	\$2,198,810	5.69%	\$11,144,362	28.85%	\$257,800	0.67%	\$13,600,972	35.21%
<u>E.E. Waddell (17)</u>	\$152,000	\$0	0.00%	\$0	0.00%	\$0	0.00%	\$10,950	7.20%	\$0	0.00%	\$10,950	7.20%
<u>East Mecklenburg High School (17)</u>	\$12,495,074	\$0	0.00%	\$107,650	0.86%	\$107,650	0.86%	\$12,500	0.10%	\$2,871	0.02%	\$123,021	0.98%
<u>Garinger High School (17)</u>	\$312,137	\$0	0.00%	\$37,000	11.85%	\$37,000	11.85%	\$20,525	6.58%	\$0	0.00%	\$57,525	18.43%
<u>Harding High School (17)</u>	\$12,919,361	\$1,504,505	11.65%	\$310,356	2.40%	\$1,814,862	14.05%	\$3,846,831	29.78%	\$176	0.00%	\$5,661,869	43.82%
<u>JT Williams (17)</u>	\$1,180,500	\$0	0.00%	\$0	0.00%	\$0	0.00%	\$0	0.00%	\$0	0.00%	\$0	0.00%
<u>Lansdowne Elementary School (17)</u>	\$30,617,679	\$14,000	0.05%	\$104,400	0.34%	\$118,400	0.39%	\$45,105	0.15%	\$223,625	0.73%	\$387,130	1.26%
<u>Lincoln Heights Elementary School (17)</u>	\$432,426	\$92,274	21.34%	\$18,800	4.35%	\$111,074	25.69%	\$0	0.00%	\$74,503	17.23%	\$185,577	42.92%
<u>Montclair Elementary School (17)</u>	\$26,155,778	\$3,096,412	11.84%	\$2,142,645	8.19%	\$5,239,057	20.03%	\$5,279,462	20.18%	\$390,227	1.49%	\$10,908,746	41.71%
<u>Mountain Island Lake Academy (17)</u>	\$710,950	\$0	0.00%	\$0	0.00%	\$0	0.00%	\$0	0.00%	\$0	0.00%	\$0	0.00%
<u>New Elementary School (Bain, Lebanon)</u>	\$26,266,915	\$4,421,430	16.83%	\$19,078,950	72.63%	\$23,500,380	89.47%	\$1,220,470	4.65%	\$309,180	1.18%	\$25,030,030	95.29%
<u>New Elementary School (Elon, Hawk)</u>	\$1,920,205	\$0	0.00%	\$0	0.00%	\$0	0.00%	\$45,490	2.37%	\$0	0.00%	\$45,490	2.37%
<u>New Elementary School (Hidden Valley)</u>	\$1,966,500	\$0	0.00%	\$0	0.00%	\$0	0.00%	\$0	0.00%	\$300	0.02%	\$300	0.02%
<u>New Elementary School (Windsor, W)</u>	\$2,010,570	\$11,000	0.55%	\$0	0.00%	\$11,000	0.55%	\$0	0.00%	\$0	0.00%	\$11,000	0.55%
<u>New High School (17) (Olympic Relief)</u>	\$98,154,986	\$14,826,631	15.11%	\$4,093,400	4.17%	\$18,920,031	19.28%	\$7,232,870	7.37%	\$666,450	0.68%	\$26,819,351	27.32%
<u>New High School (South, Ardrey) (17)</u>	\$6,212,361	\$13,500	0.22%	\$96,500	1.55%	\$110,000	1.77%	\$50,000	0.80%	\$1,125	0.02%	\$161,125	2.59%
<u>North Academy of World Languages</u>	\$38,264,273	\$1,964,711	5.13%	\$1,909,480	4.99%	\$3,874,191	10.12%	\$4,583,546	11.98%	\$418,949	1.09%	\$8,876,686	23.20%
<u>Northwest School of the Arts (17)</u>	\$115,000	\$0	0.00%	\$0	0.00%	\$0	0.00%	\$0	0.00%	\$0	0.00%	\$0	0.00%
<u>Shamrock Gardens Elementary School (17)</u>	\$27,991,643	\$1,788,332	6.39%	\$1,431,447	5.11%	\$3,219,779	11.50%	\$22,595,506	80.72%	\$282,184	1.01%	\$26,097,469	93.23%
<u>Sharon Elementary School (17)</u>	\$8,506,654	\$259,494	3.05%	\$399,099	4.69%	\$658,593	7.74%	\$1,211,518	14.24%	\$208,346	2.45%	\$2,078,457	24.43%
<u>South Academy of International Languages (17)</u>	\$37,765,744	\$5,077,406	13.44%	\$2,159,095	5.72%	\$7,236,501	19.16%	\$9,880,960	26.16%	\$309,838	0.82%	\$17,427,300	46.15%

Facility	Contract Amount	African American MBE\$	%	Other MBE \$	%	Total MBE \$	%	Other WBE \$	%	Other SBE \$	%	Total	%
<u>South Pine Academy</u>	\$26,418,711	\$772,455	2.92%	\$19,833,781	75.07%	\$20,606,236	78.00%	\$4,067,896	15.40%	\$238,129	0.90%	\$24,912,261	94.30%
<u>West Charlotte High School (17)</u>	\$94,938,900	\$15,116,534	15.92%	\$1,300,350	1.37%	\$16,416,884	17.29%	\$72,580,016	76.45%	\$562,104	0.59%	\$89,559,003	94.33%
<u>West Mecklenburg High School (17)</u>	\$9,944,021	\$279,936	2.82%	\$417,752	4.20%	\$697,688	7.02%	\$2,149,117	21.61%	\$279,710	2.81%	\$3,126,515	31.44%
<b>Grandtotal</b>	\$555,727,715	\$54,037,070	9.72%	\$58,893,326	10.60%	\$112,930,396	20.32%	\$148,176,191	26.66%	\$4,334,302	0.78%	\$265,440,889	47.76%

## MWSBE Participation 2017 Bond Projects



**Design and Construction  
Contract Total  
\$555,727,715**

# PROJECT CONTROLS

CHARLOTTE-MECKLENBURG BOARD OF EDUCATION  
2013 BOND SERIES-CAPITAL IMPROVEMENT PROGRAM  
BUDGET STATUS REPORT

	Original Project Budget	Current Project Budget	Committed Amount	Approved Change Orders	Total Committed	Pending Commitments	To Be Committed	Prev Paid To Date	Paid To Date	Balance To Complete	Monthly Expenditure
	(A)	(B)	(C)	(D)	(E)=C+D	(F)	(G)=(B-E-F)	(H)	(I)	(J)=(B-I)	(K)=(I-H)
<b><u>A. REPLACEMENT &amp; RENOVATIONS</u></b>											
1 Career & Technology Education Institutes Phase 1:	\$8,640,000	\$18,256,861	\$7,064,749	\$333,080	\$7,397,829	\$0	\$10,859,032	\$7,331,747	\$7,331,747	\$10,925,114	\$0
2 Davidson K-8 Conversion	\$9,500,000	\$13,610,000	\$2,130,689	\$11,364,591	\$13,495,280	\$0	\$114,720	\$13,455,637	\$13,455,637	\$154,363	\$0
3 J.M. Alexander Middle Replacement	\$30,672,000	\$29,845,539	\$4,502,518	\$25,343,021	\$29,845,539	\$0	\$0	\$29,845,539	\$29,845,539	\$0	\$0
4 Nations Ford Elementary Replacement	\$19,440,000	\$19,231,603	\$3,958,869	\$15,272,733	\$19,231,603	\$0	\$0	\$19,231,604	\$19,231,604	\$0	\$0
5 Northwest School of the Arts	\$12,420,000	\$12,868,718	\$2,047,917	\$10,820,801	\$12,868,718	\$0	\$0	\$12,868,719	\$12,868,719	\$0	\$0
6 Oakhurst STEAM Magnet Elementary/Starmount	\$5,940,000	\$5,407,812	\$3,471,397	\$1,936,415	\$5,407,812	\$0	\$0	\$5,407,812	\$5,407,812	\$0	\$0
7 Pre-K-8 Conversions Phase II: Ashley Park/ Bruns	\$24,732,000	\$19,791,457	\$4,167,669	\$15,563,538	\$19,731,207	\$0	\$60,250	\$19,700,807	\$19,700,807	\$90,650	\$0
8 Selwyn Elementary	\$2,592,000	\$4,687,004	\$744,378	\$3,881,906	\$4,626,284	\$0	\$60,720	\$4,624,831	\$4,624,831	\$62,172	\$0
9 Statesville Road Elementary	\$20,340,000	\$20,648,510	\$5,081,473	\$15,567,037	\$20,648,509	\$0	\$0	\$20,648,509	\$20,648,509	\$0	\$0
<b>Total Replacement &amp; Renovations</b>	<b>\$134,276,000</b>	<b>\$144,347,503</b>	<b>\$33,169,659</b>	<b>\$100,083,122</b>	<b>\$133,252,781</b>	<b>\$0</b>	<b>\$11,094,722</b>	<b>\$133,115,205</b>	<b>\$133,115,205</b>	<b>\$11,232,298</b>	<b>\$0</b>
<b><u>B. RESPONSE TO ENROLLMENT GROWTH</u></b>											
1 East Mecklenburg High Addition	\$12,744,000	\$10,988,287	\$3,369,684	\$7,618,603	\$10,988,287	\$0	\$0	\$10,988,287	\$10,988,287	\$0	\$0
2 Myers Park High Addition	\$22,248,000	\$11,070,580	\$1,207,493	\$9,833,448	\$11,040,942	\$0	\$29,639	\$11,040,941	\$11,040,941	\$29,639	\$0
3 Northridge Middle Addition	\$6,448,000	\$6,366,170	\$2,114,306	\$4,251,865	\$6,366,171	\$0	\$0	\$6,366,171	\$6,366,171	\$0	\$0
4 Olympic High Addition/Renovation	\$8,964,000	\$8,947,310	\$2,002,694	\$6,944,615	\$8,947,310	\$0	\$0	\$8,947,310	\$8,947,310	\$0	\$0
5 South Mecklenburg High Addition	\$18,360,000	\$16,307,355	\$2,922,282	\$13,385,073	\$16,307,355	\$0	\$0	\$16,307,355	\$16,307,355	\$0	\$0
6 Charlotte East Language Academy (FKA -New Lang	\$30,376,000	\$31,456,414	\$5,740,242	\$25,692,685	\$31,432,927	\$0	\$23,487	\$31,387,929	\$31,387,929	\$68,485	\$0
7 Rea Farms STEAM Academy	\$31,376,000	\$40,476,000	\$9,134,265	\$30,214,465	\$39,348,729	\$52,310	\$1,074,961	\$38,153,881	\$38,163,520	\$2,312,480	\$9,639
8 Renaissance West STEAM Academy (FKA New Pre-	\$30,376,000	\$31,740,150	\$5,667,328	\$26,072,822	\$31,740,150	\$0	\$0	\$31,698,952	\$31,698,952	\$41,199	\$0
<b>Total Response to Enrollment Growth</b>	<b>\$160,892,000</b>	<b>\$157,352,267</b>	<b>\$32,158,295</b>	<b>\$124,013,576</b>	<b>\$156,171,871</b>	<b>\$52,310</b>	<b>\$1,128,087</b>	<b>\$154,890,825</b>	<b>\$154,900,465</b>	<b>\$2,451,802</b>	<b>\$9,639</b>
<b><u>C. CONTINGENCY</u></b>											
	\$0	\$0	\$0	\$0	\$0	\$0	\$0	\$0	\$0	\$0	\$0
<b>Total Contingency</b>	<b>\$0</b>	<b>\$0</b>	<b>\$0</b>	<b>\$0</b>	<b>\$0</b>	<b>\$0</b>	<b>\$0</b>	<b>\$0</b>	<b>\$0</b>	<b>\$0</b>	<b>\$0</b>
<b>TOTAL LOCAL BOND PROGRAM</b>	<b>\$295,168,000</b>	<b>\$301,699,771</b>	<b>\$65,327,954</b>	<b>\$224,096,698</b>	<b>\$289,424,652</b>	<b>\$52,310</b>	<b>\$12,222,809</b>	<b>\$288,006,030</b>	<b>\$288,015,670</b>	<b>\$13,684,101</b>	<b>\$9,639</b>

Original project estimated costs approved by the Board Of Education on July 23, 2013 and approved by the voters of Mecklenburg County on November 5, 2013.

Note: Mecklenburg County's appropriated interest from COPS to increase funding for the 2013 Bond Program.

CHARLOTTE-MECKLENBURG BOARD OF EDUCATION  
2017 BOND SERIES-CAPITAL IMPROVEMENT PROGRAM  
BUDGET STATUS REPORT

	Original Project Budget	Current Project Budget	Committed Amount	Approved Change Orders	Total Committed	Pending Commitments	To Be Committed	Prev Paid To Date	Paid To Date	Balance To Complete	Monthly Expenditure
	(A)	(B)	(C)	(D)	(E)=C+D	(F)	(G)=(B-E-F)	(H)	(I)	(J)=(B-I)	(K)=(I-H)
<b><u>A. REPLACEMENT &amp; RENOVATIONS</u></b>											
1 Briarwood Elementary *	\$29,091,619	\$31,962,730	\$4,936,535	\$26,609,642	\$31,546,176	(\$454)	\$417,008	\$17,990,582	\$20,042,765	\$11,919,965	\$2,052,183
2 Bruns Academy Replacement	\$34,207,808	\$39,784,927	\$1,433,024	\$218,050	\$1,651,074	\$0	\$38,133,853	\$0	\$0	\$39,784,927	\$0
3 Career & Technology Education Upgrades	\$10,101,734	\$10,159,765	\$2,260,555	\$4,093,502	\$6,354,057	\$0	\$3,805,708	\$1,133,375	\$1,171,791	\$8,987,974	\$38,416
4 Collinswood K-8 *	\$44,172,540	\$42,272,540	\$5,010,866	\$36,789,134	\$41,800,000	\$0	\$472,540	\$41,368,848	\$41,371,394	\$901,146	\$2,546
5 East Mecklenburg HS	\$12,771,594	\$15,058,594	\$1,784,212	\$11,387,595	\$13,171,807	\$45,037	\$1,841,750	\$871,296	\$1,685,696	\$13,372,898	\$814,399
6 Garinger HS	\$13,936,979	\$14,486,979	\$961,475	(\$70,000)	\$891,475	\$0	\$13,595,504	\$46,168	\$188,740	\$14,298,239	\$142,572
7 Harding University High *	\$18,330,263	\$14,530,263	\$2,048,751	\$11,712,323	\$13,761,074	\$10,750	\$758,439	\$13,156,028	\$13,156,028	\$1,374,235	\$0
8 Charlotte-Mecklenburg Academy (FKA -EC Specialty	\$18,957,960	\$18,079,506	\$2,175,504	\$15,790,598	\$17,966,102	\$2,665	\$110,739	\$17,699,220	\$17,699,220	\$380,286	\$0
9 Lansdowne Elementary	\$29,391,270	\$37,128,834	\$4,133,958	\$28,400,521	\$32,534,479	\$0	\$4,594,355	\$2,588,586	\$4,286,286	\$32,842,548	\$1,697,700
10 Lincoln Heights Elementary	\$3,740,478	\$4,588,675	\$577,649	\$26,774	\$604,423	\$0	\$3,984,252	\$383,738	\$383,738	\$4,204,937	\$0
11 Montclair Elementary Replacement *	\$28,559,390	\$28,559,390	\$2,439,368	\$26,056,957	\$28,496,324	\$0	\$63,066	\$26,922,070	\$27,371,136	\$1,188,254	\$449,066
12 Mountain Island k-8	\$9,218,439	\$10,488,400	\$1,093,515	\$0	\$1,093,515	\$0	\$9,394,885	\$0	\$0	\$10,488,400	\$0
13 Northwest School of the Arts	\$17,632,202	\$20,467,000	\$846,736	\$117,644	\$964,380	\$0	\$19,502,620	\$0	\$0	\$20,467,000	\$0
14 Shamrock Gardens Elementary *	\$29,890,351	\$35,358,351	\$3,664,062	\$26,053,763	\$29,717,825	\$25,346	\$5,615,180	\$4,396,514	\$5,693,440	\$29,664,911	\$1,296,927
15 Sharon Elementary	\$7,706,528	\$9,475,862	\$1,475,340	\$7,659,186	\$9,134,525	\$30,950	\$310,387	\$7,013,334	\$7,593,125	\$1,882,737	\$579,792
16 South Mecklenburg HS	\$13,352,143	\$15,622,927	\$554,114	\$94,238	\$648,352	\$0	\$14,974,575	\$0	\$0	\$15,622,927	\$0
17 E.E. Waddell Magnet HS	\$4,571,709	\$5,137,367	\$341,726	\$0	\$341,726	\$0	\$4,795,641	\$5,750	\$5,750	\$5,131,617	\$0
18 West Charlotte HS Replacement	\$109,977,166	\$109,977,166	\$11,882,402	\$88,163,139	\$100,045,541	\$152,000	\$9,779,625	\$39,513,723	\$43,687,461	\$66,289,705	\$4,173,738
19 West Mecklenburg HS	\$11,065,440	\$10,850,902	\$1,645,432	\$8,814,308	\$10,459,739	\$5,750	\$385,413	\$6,091,121	\$6,875,292	\$3,975,610	\$784,171
20 John Taylor Williams	\$13,964,339	\$15,732,600	\$1,760,020	\$0	\$1,760,020	\$0	\$13,972,580	\$0	\$0	\$15,732,600	\$0
Total Replacement & Renovations	\$460,639,952	\$489,722,778	\$51,025,241	\$291,917,373	\$342,942,614	\$272,044	\$146,508,120	\$179,180,353	\$191,211,863	\$298,510,915	\$12,031,510
<b><u>B. RESPONSE TO ENROLLMENT GROWTH</u></b>											
1 South Academy of International Languages	\$45,359,367	\$42,959,367	\$6,186,516	\$35,673,741	\$41,860,257	\$0	\$1,099,110	\$35,645,797	\$36,767,221	\$6,192,146	\$1,121,424
2 North Academy of World Languages (FKA - New K-8	\$45,359,367	\$43,359,367	\$6,308,760	\$35,913,137	\$42,221,897	\$761	\$1,136,709	\$36,489,796	\$37,076,328	\$6,283,039	\$586,532
3 South Pine Academy (FKA - New ES Nations Ford, S	\$29,173,829	\$31,572,550	\$6,853,132	\$24,395,881	\$31,249,013	\$91,753	\$231,783	\$18,994,790	\$21,363,425	\$10,209,124	\$2,368,636
4 New Elementary School - Bain/Lebanon Relief	\$29,988,332	\$31,455,951	\$3,314,226	\$24,495,350	\$27,809,576	\$0	\$3,646,375	\$1,544,225	\$1,579,314	\$29,876,637	\$35,089
5 New Elementary School - Windsor Park Relief *	\$30,422,230	\$37,197,022	\$3,279,093	\$177,404	\$3,456,497	\$0	\$33,740,525	\$98,321	\$98,321	\$37,098,701	\$0
6 New Elementary School - Elon/Hawk Ridge Relief *	\$30,426,712	\$43,476,676	\$13,955,171	\$47,300	\$14,002,471	\$0	\$29,474,204	\$10,918,848	\$10,934,783	\$32,541,893	\$15,935
7 New Elementary School - Hidden Valley Relief	\$30,518,345	\$34,697,022	\$4,105,958	\$179,875	\$4,285,833	\$0	\$30,411,189	\$1,129,782	\$1,238,978	\$33,458,044	\$109,196
8 New High School - Olympic Relief	\$109,908,793	\$109,908,793	\$11,310,249	\$91,828,509	\$103,138,758	\$130,094	\$6,639,941	\$40,980,569	\$46,440,887	\$63,467,906	\$5,460,319
9 New High School - South Meck/Ardrey Kell Relief *	\$110,287,621	\$154,930,460	\$10,849,793	\$711,379	\$11,561,172	\$0	\$143,369,288	\$2,068,820	\$2,587,285	\$152,343,175	\$518,466
Total Response to Enrollment Growth	\$461,444,596	\$529,557,208	\$66,162,898	\$213,422,576	\$279,585,474	\$222,608	\$249,749,125	\$147,870,946	\$158,086,543	\$371,470,665	\$10,215,596
<b><u>C. CONTINGENCY</u></b>											
	\$0	\$0	\$0	\$0	\$0	\$0	\$0	\$0	\$0	\$0	\$0
Total Contingency	\$0	\$0	\$0	\$0	\$0	\$0	\$0	\$0	\$0	\$0	\$0

CHARLOTTE-MECKLENBURG BOARD OF EDUCATION  
2017 BOND SERIES-CAPITAL IMPROVEMENT PROGRAM  
BUDGET STATUS REPORT

	Original Project Budget	Current Project Budget	Committed Amount	Approved Change Orders	Total Committed	Pending Commitments	To Be Committed	Prev Paid To Date	Paid To Date	Balance To Complete	Monthly Expenditure
	(A)	(B)	(C)	(D)	(E)=C+D	(F)	(G)=(B-E-F)	(H)	(I)	(J)=(B-I)	(K)=(I-H)
TOTAL LOCAL BOND PROGRAM	\$922,084,548	\$1,019,279,985	\$117,188,139	\$505,339,949	\$622,528,088	\$494,653	\$396,257,246	\$327,051,299	\$349,298,405	\$669,981,580	\$22,247,106

Original project estimated costs approved by the Board Of Education on July 25, 2017 approved by the voters of Mecklenburg County on November 7, 2017.

\*Project included in \$33.2M early funding approved by Board Of Education on August 9, 2016 and Mecklenburg Board of County Commissioners on September 6, 2016. On February 19, 2019 an additional \$8M was approved for New Elementary School - Elon/Hawk Ridge Relief site.

\*Current Budget includes an additional \$89.2M to fund increase land and construction costs. The additional funds were approved by the Board of County Commissioners on June 16, 2020.

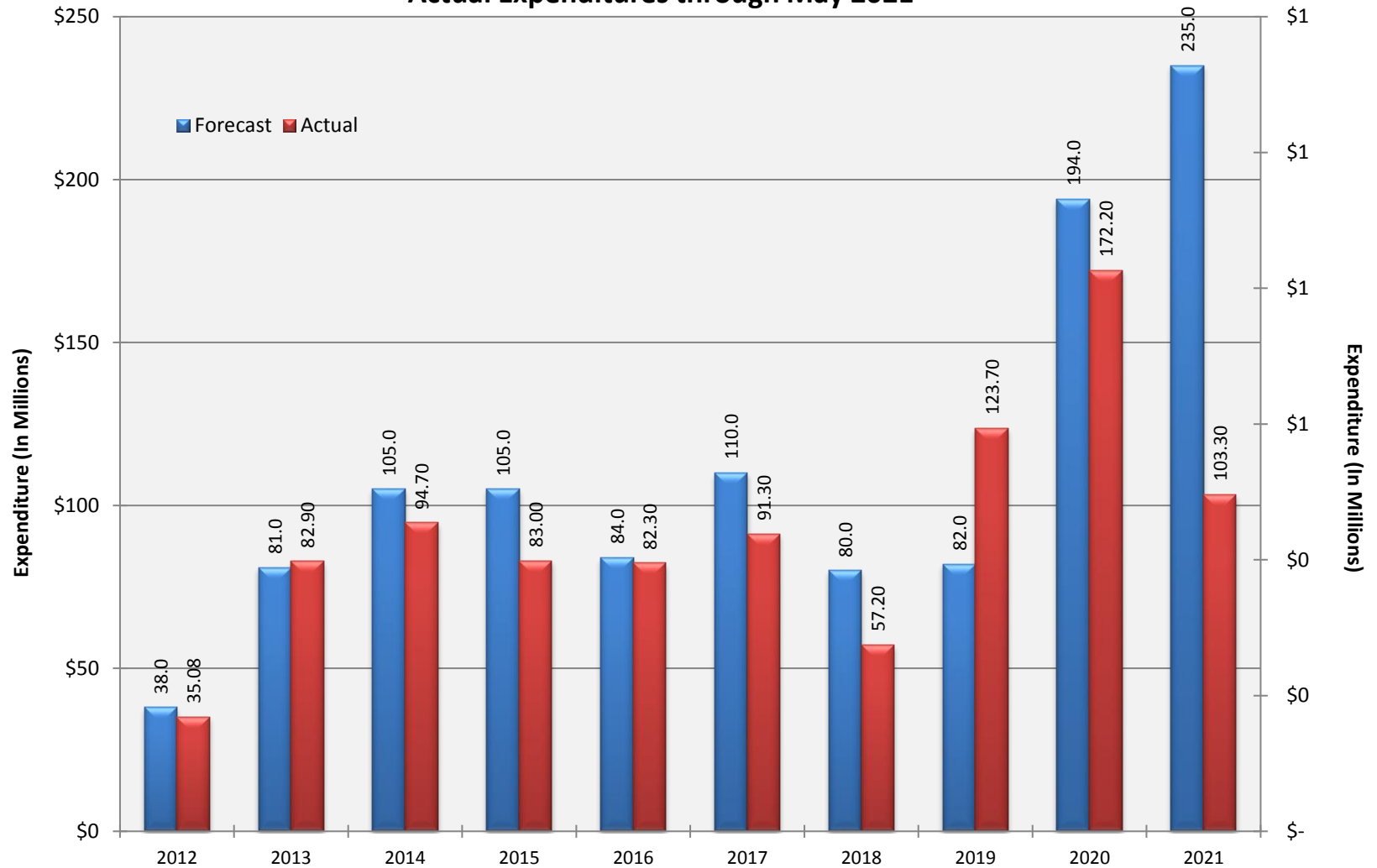
**Charlotte-Mecklenburg Board of Education**  
**Approved Construction or Repair Change Orders\***  
**Reporting Period: May 2021**

<b>Funding Source</b>	<b>Project Name</b>	<b>Contractor</b>	<b>Description</b>	<b>Change Order Amount</b>	<b>Revised Contract Value</b>
2017 Bond	Harding High School (17)	Barnhill Contracting Company	Delete Chiller Piping & Pump work, Add Amp for Existing Sound System at Bldg E, Raise Camera Height Bleachers, Extend Sidewalk at Thornton Street, Roof Height Conflict	\$12,588.89	\$11,624,287.21
2017 Bond	Sharon Elementary School (17)	Samet Corporation	Elevation Changes at Dining Area & Mech Room, Gas Meter, HVAC Shaft Wall, Demo Brick Veneer for Joist Bearing at Dining , Connector Glass Wall System - Wind Load, Wood Blocking Window Sill, Return Duct, Solid Surface Window Sill Deduct, Add Damp-proofing, Recessed Floor Slab in Restrooms for Ceramic & VCT Tile	\$77,585.13	\$7,748,701.11
2017 Bond	North Academy of World Languages	New Atlantic Contracting, Inc.	Reconcile Playground Allowance, Add Bi-Directional Amplifier, Delete Downspout Boots, Expansion Joint Covers, Clearing at Buffer, Exit & Emergency Lights	\$71,345.00	\$35,650,259.58

\* Not previously presented to the Board of Education for Approval (less than \$90,000)

# 10 YEAR EXPENDITURE SUMMARY

Forecast Expenditure versus  
Actual Expenditures through May 2021



# GLOSSARY

# Glossary

---

- **Project Management** – This section includes updates from our project managers and describes the currently active construction projects. This includes from Board of Education award thru final completion.
- **Design and Bidding** – This section contains updates from our design managers on the projects currently in the design phase. This phase from design award to Board of Education award of construction.
- **Controls** – Section includes misc. updates from controls group including expenditures, related Board of Education awards during the reporting period, cash flow information. This section covers all projects from approved bond through final expenditures and bond close with the county.
- **MWSBE** – Contains updates from the MWSBE Director and team, including current activity and summaries of the participation by MWSBE providers on our program.
- **Bond Progress Summary** – Provides a summary of bond financials including bond value, committed/pending amounts, paid to date, expended this month.
- **Project Procurement Dates** - Next 90 Days major project bid activity.
- **Mobile Swing Space Utilization** – Includes a summary of program related swing space currently in use and the schedule of use.
- **Bond Summary Schedule** – Current program summary schedule including planned design, construction and FF&E. These activities are fed from detailed schedules and are fine-tuned as project information is available.
- **Project Contractor Teams**; Provides summary of turnover dates for completed/closed projects since 2010 including architects/designers and contractors.
- **School Site Location Maps** – General location of bond projects (2017) by type.
- **Project Status Report** – This section of the report provides a summary of the bond project scope, current estimate (all sources), planned occupancy/actual occupancy date. It also provides a current status of the design phase, construction progress and a brief update. The report currently includes 2013 and 2017 bond projects that have or will be completed after to August 2016.
- **MWSBE Participation Report** – The MWSBE report provides a summary of the participation on the 2013 & 2017 Bond funded projects.
- **Project Progress Photos** – Includes photos of active construction projects.
- **Budget Summary Reports** – These reports are by funding source and summarize financial activity to date on the projects. This includes original and current project estimates, committed values, amounts paid to date, balances and monthly expenditures.
- **Change Orders < \$90,000** – This month's approved construction or repair change orders < \$90,000.
- **Expenditure Summary** – Provides a summary of Bond Expenditures by calendar year.