

# Capital Improvement Program

Monthly Bond Report  
April 2021



Shamrock Gardens Elementary School



## **CAPITAL PROGRAM SERVICES** Capital Improvement Program

**APRIL 2021**  
**MONTHLY BOND REPORT**

### **PROGRAM OVERVIEW**

- Project Management
- Design and Bidding
- Controls
- MWSBE
- Bond Progress Summary
- Project Procurement - Next 90 Days
- Swing Space Utilization
- Bond Summary Schedule
- Project Contractor Teams; Projects in Design/Construction and Substantially Completed/Closed
- School Site Location Maps
  - Elementary Schools
  - Middle Schools
  - High Schools & Specialty Schools

### **PROJECT STATUS REPORT**

### **MWSBE PARTICIPATION REPORT**

### **PROJECT PROGRESS PHOTOS**

### **PROJECT CONTROLS**

- Budget Summary Reports
  - 2013 Bond Series
  - 2017 Bond Series
- Change Orders < \$90,000
- Expenditure Summary

### **GLOSSARY**

# PROGRAM OVERVIEW

## PROJECT MANAGEMENT

The following is a summary of the activity on the bond funded projects in construction during the month of April.

The construction manager for the **Briarwood Elementary Replacement School** completed the exterior brick veneer on the project. The HVAC units have been started and are providing conditioned air throughout the facility. The ceiling grid installation has progressed into the administration and first floor classroom areas. Casework arrived on site and installation is beginning on the second floor classroom wing. The painter applied the final coats of paint in the classroom wings and administration areas while the first coat was applied in the multipurpose/cafeteria. The curb and gutter was installed at the front entry in preparation for stone base and asphalt. The 45-classroom replacement school is scheduled to be occupied in August 2021. Upon completion, demolition and remaining site work will commence and be completed in 2022.

The construction manager for **East Mecklenburg High School** installed the erosion control requirements and began grading. The initial grading will include removal of unsuitable soils and replacement with compacted structural fill. The underground infrastructure to support the new building is also being coordinated with the public utilities. The new classroom wing is scheduled for occupancy in August 2022.

The **Lansdowne Elementary School** construction manager has moved into grading for the new building pad. The top soil has been stripped and lime stabilization has been completed for the building pad. The underground existing sanitary sewer lines that support the existing building are being rerouted around the new building footprint. Occupancy of the replacement school is scheduled for August 2022. Upon completion of the new building, demolition and remaining site work will commence and will be completed in 2023.

The construction manager for the **Montclair Elementary School** turned the new bus lot over to the school for use, but maintained the area between the parking and bus lots to allow the canopy to be installed. The existing bus lot was removed, and the area was final graded to the playfield level. The playground enclosures and equipment were installed. Final grading for the new bus entry was performed along with the installation of curb and gutter; stone and asphalt will be installed next month. Landscaping for the entire project is underway. The new 45-classroom elementary school building has been occupied. The remaining site work is being completed.

The **New Elementary School (Nations, Sterling, Steele Creek Relief)** continued its push to the end. Preparation work started for the VCT and casework for installation in early May. Ceiling grid installation continued throughout the building for MEP devices to be placed. Temporary window systems are being removed and permanent systems installed. Sidewalks were installed around the building and topsoil placed in preparation for grass and plantings. The new 45-classroom relief elementary school is scheduled to be occupied August of 2021.

The construction manager for the **New High School Olympic Relief** continues to work throughout the site with a focus on parking lots and the stadium. Asphalt was installed on a portion of the student/staff lot; stone base was installed in the other locations. The home and visitor bleachers were installed, and the below grade masonry was installed for the athletic buildings. Masonry and exterior brick continued throughout the building. Exterior studs, sheathing and spray foam continued at the classroom wings. Roofing was installed in areas as they became available and mechanical, electrical, plumbing (MEP) rough-in's continued above ceilings and in walls. The 100-classroom relief high school is scheduled to be occupied in August 2022.

The construction manager for the **New K-8 Language Immersion North** project is working through final inspections by Mecklenburg County Building Standards and County Fire. These inspections have identified that the facility will require a booster pump on the fire sprinkler system to alleviate issues with lower than anticipated water pressure from Charlotte Water. Building modifications are taking place and the pump has been ordered. Otherwise the building and all finishes is substantially complete; furnishings will be allowed once the pump is installed and approved which is



scheduled for July. The Hambright Road improvements have started and the existing underground utilities have been relocated. The existing track has been resurfaced and will receive final topping and striping shortly. The team is awaiting the school naming and mascot approval; this will allow school signage and gym flooring to be finalized. The project is scheduled to be occupied August 2021.

The **Shamrock Gardens Elementary School** construction manager completed the aggregate piers and lime stabilization. The footings have started in the kitchen/cafeteria and the electrician and plumber have mobilized to begin below slab rough-ins. Installation of erosion control measures continued and grading of the staff parking lot started. The new 45-classroom replacement elementary school is scheduled to be occupied August 2022.

The construction manager for the **Sharon Elementary School Building Addition** has moved into final finishes. The VCT floors are complete and bathroom wall and floor tile is installed. The architect and design engineers are completing their punch list. The exterior sidewalks and final grading are nearing completion. The cafeteria expansion has completed final finishes and building inspections are ongoing. Occupancy of the 16-classroom addition and cafeteria expansion is scheduled for August 2021.

The construction manager for the **South Academy of International Languages** (*FNA New K-8 Language Immersion South*) worked diligently on the punch list and commissioning items and has the list to a minimal amount. Furniture, fixtures and equipment began mid-April and will continue into May. The staff is currently scheduled to move in mid-June. The project is scheduled to be occupied August 2021.

The **West Charlotte High School** construction manager has now completed the building structure. The load bearing masonry walls and steel erection is complete and floor slabs have been poured. The MEP contractors are working on building rough-ins throughout the facility. The roofing contractor continues to install the roofing membrane now that roof deck is completed. The brick veneer is progressing around the exterior elevations. The athletic buildings around the stadium have moved into interior MEP rough-ins. The site contractor has started construction of the north parking lot. The project is scheduled to be occupied August 2022. Once the new school is occupied the existing school will be demolished and final site work will take place with final project completion in August 2023.

The **West Mecklenburg High School Gym** construction manager has the building completely dried and the MEP trades are finalizing rough-ins. The bathroom floor/wall tile is progressing and the painter is installing final finishes. Roof top units have been set and energized and conditioned air is running, the gym wood floor will follow. The site contractor is pouring sidewalks and maintaining erosion control. Occupancy of the new gymnasium is scheduled for August 2021 the existing gym will then be used as an auxiliary gym.

## DESIGN AND BIDDING

The following is a summary of the activity on the bond funded projects in design and bidding phase during the month of April.

The team is reviewing the construction manager's GMP pricing for the **CTE projects at Harding, South Mecklenburg and Olympic**. The projects are scheduled for board approval in May. The Harding project consists of renovations to existing classrooms in the auditorium building to develop a suite of technology classrooms. The project at Olympic includes electrical up fits to the existing carpentry lab which expands the curriculum to include demonstration learning booths for plumbing and electrical trades. The project at South Mecklenburg consists of renovating the old kitchen area into a culinary arts lab and classroom. Occupancy for these projects is scheduled for January 2022.

The **Garinger High School Addition/Renovation** and CTE project's construction manager has begun the bid phase and it is scheduled to for board approval in June. The project's scope consists of a 2-story building with 16 classrooms and modifications to the existing 300 building. The new building is scheduled to be completed for occupancy in August 2022.

The **New Elementary School (Bain, Lebanon, Piney Grove Relief)** construction manager has completed the bid phase and the project will be submitted to the board for approval in May. The project is scheduled for occupancy in August 2022. The project consists of a 45-classroom school located next to the existing Mint Hill Middle School.

The **New Elementary School (Elon, Hawk Ridge, Polo Relief)** architect has submitted the pre-schematic design submittal for CMS review and comments. This new 45-classroom school will be located across from the Ardrey Kell High School and is scheduled for occupancy in August 2023.

The **New Elementary School (Hidden Valley, JW Grier, Newell Relief)** architect continues to progress through the schematic design phase. This new 45-classroom school will be located next to Northridge Middle School and is scheduled for occupancy in August 2023.

The **New Elementary School (Windsor, Winterfield, Idlewild Relief)** architect has progressed into the schematic design phase. Due diligence activities continue to be delayed due to site acquisition issues. Alternate building sites are being considered. The project consists of a new 45-classroom school facility scheduled for occupancy in August 2023.

The **New High School (South, Ardrey Kell Relief)** architect has delivered the design development submittal for CMS staff to review. The traffic study is complete and has been submitted to CDOT for review. The project consists of a new 100-classroom high school athletic play fields and stadium. Due diligence, land acquisition and rezoning discussions activities continue to progress.

## CONTROLS

Expenditures for the month of April were \$18.6M. This brings our fiscal year to date total to \$180M against the 2021 fiscal year revised cash flow projection of \$225M. The original projection was revised due to timing of site acquisitions and shift in projects start. The Controls team also provided a quarterly update to Mecklenburg County staff for the 2013 and 2017 bond projects. The update included the status of projects and cash flow projections. The Controls team continues the reconciliation and closeout of completed 2013 and 2017 bond projects. Available funding is being accumulated to be used for future capital needs.

The Controls team continues to submit notices of potential changes at school sites so senior staff can adequately evaluate any issues. Additionally, the Controls team continues the processing of contracts, invoices, preparing notices of potential change, change orders, pay applications and check requests for projects under construction. Captured construction cost data is used to prepare financial reports such as detailed cost reports, budget summaries, reconciliation to CMS books, revisions to and updated cash flows and complete special financial requests by CMS and Mecklenburg County. This process, along with data compilation and management, allows senior staff to provide the proper guidance/direction and accurate information to the program stakeholders.

No Bond related consent items were submitted for Board of Education approval during the month of April 2021.

---

## MWSBE

As of April 2021 the overall MWSBE utilization percentage related to design and construction of the 2017 bond projects is 45.52% which includes 16.83% participation by minority contractors, 27.91% by women contractors and .78% participation by small business contractors. This accounts for more than \$239 million of utilization by Minority, Women and Small Business Contractors.

The Diversity & Inclusion Office of Charlotte-Mecklenburg Schools continued to conduct several individual virtual orientations with new MWSBE contractors and prime contractors. In addition, team members also attended/hosted the following outreach sessions/pre-bid meetings and/or workforce development opportunities:

- Carolinas-Virginia Minority Supplier Development Council ProForum annual meeting
- NC MWBE Coordinators' Network quarterly meeting
- Supplier Diversity Roundtable
- Garinger High School addition pre-bid meeting hosted by Balfour Beatty Construction

Over the next month team members will continue to work with contractors interested in bidding on upcoming school projects utilizing various virtual tools to communicate. Contractors are encouraged to review bid advertisements in Charlotte Observer and register as a vendor on the North Carolina Interactive Purchasing System for notification of the various opportunities.

## BOND PROGRESS SUMMARY As of April 2021

Funding Source and Value		Amount Committed/Pending	Amount Paid to Date	Amount Expended This Period
'13 Bond	\$301,699,770	\$289,476,962	\$288,006,030	\$44,320
'17 Bond	\$1,019,279,985	\$592,803,971	\$327,051,299	\$18,531,842
<b>Grand Total</b>	<b>\$1,320,979,755</b>	<b>\$882,280,933</b>	<b>\$615,057,329</b>	<b>\$18,576,162</b>

---

## UPCOMING MAJOR CONSTRUCTION PROCUREMENT DATES *Three Month Look Ahead*

### **School Name**

### **Bid Dates\***

**Garinger High School Addition/Renovation and CTE**  
*(Bids managed by Balfour Beatty)*

**May 2021**

*\* NOTE: Work In Progress...Dates Subject to Change.*

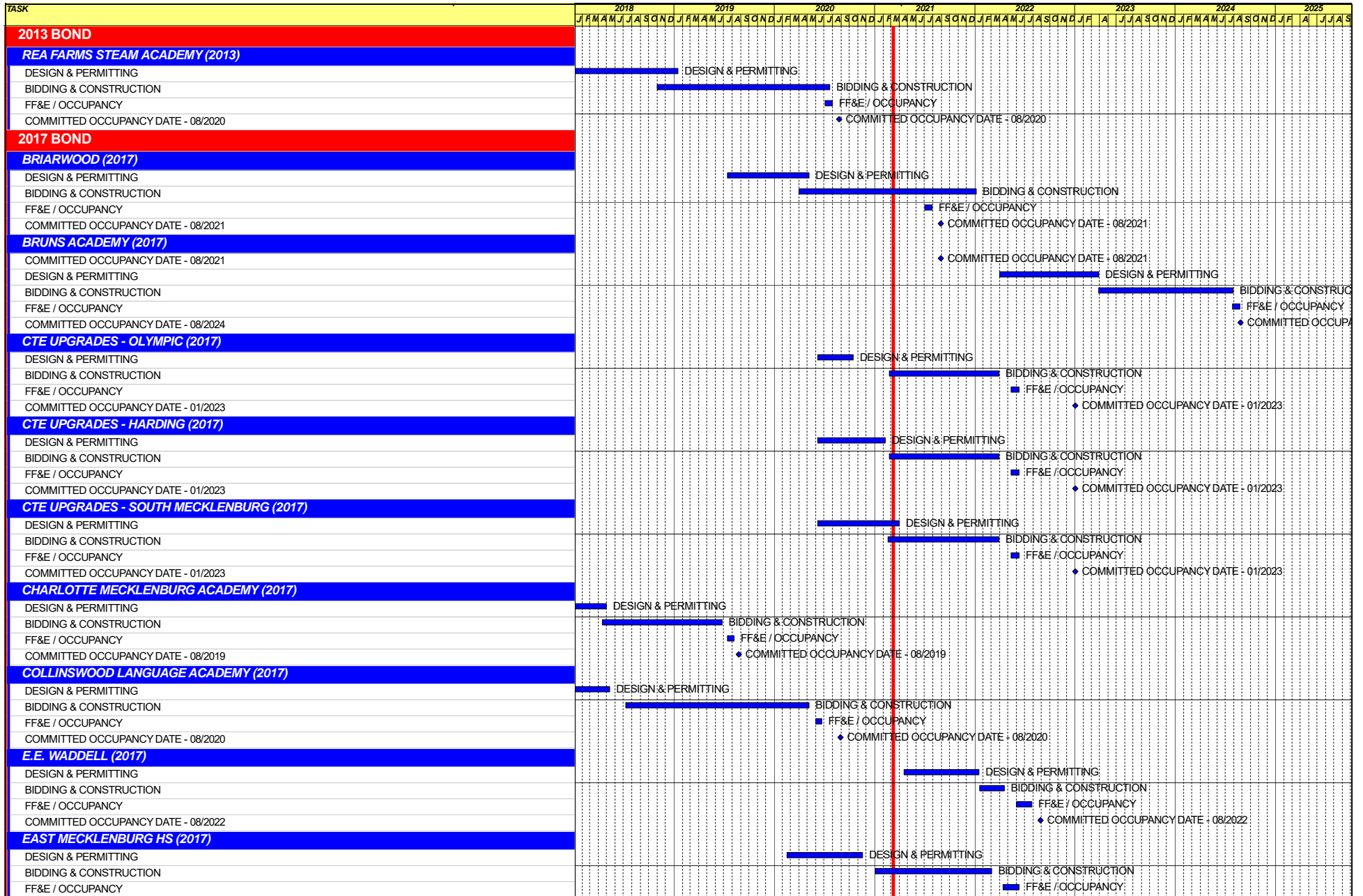
---

## SWING SPACE UTILIZATION

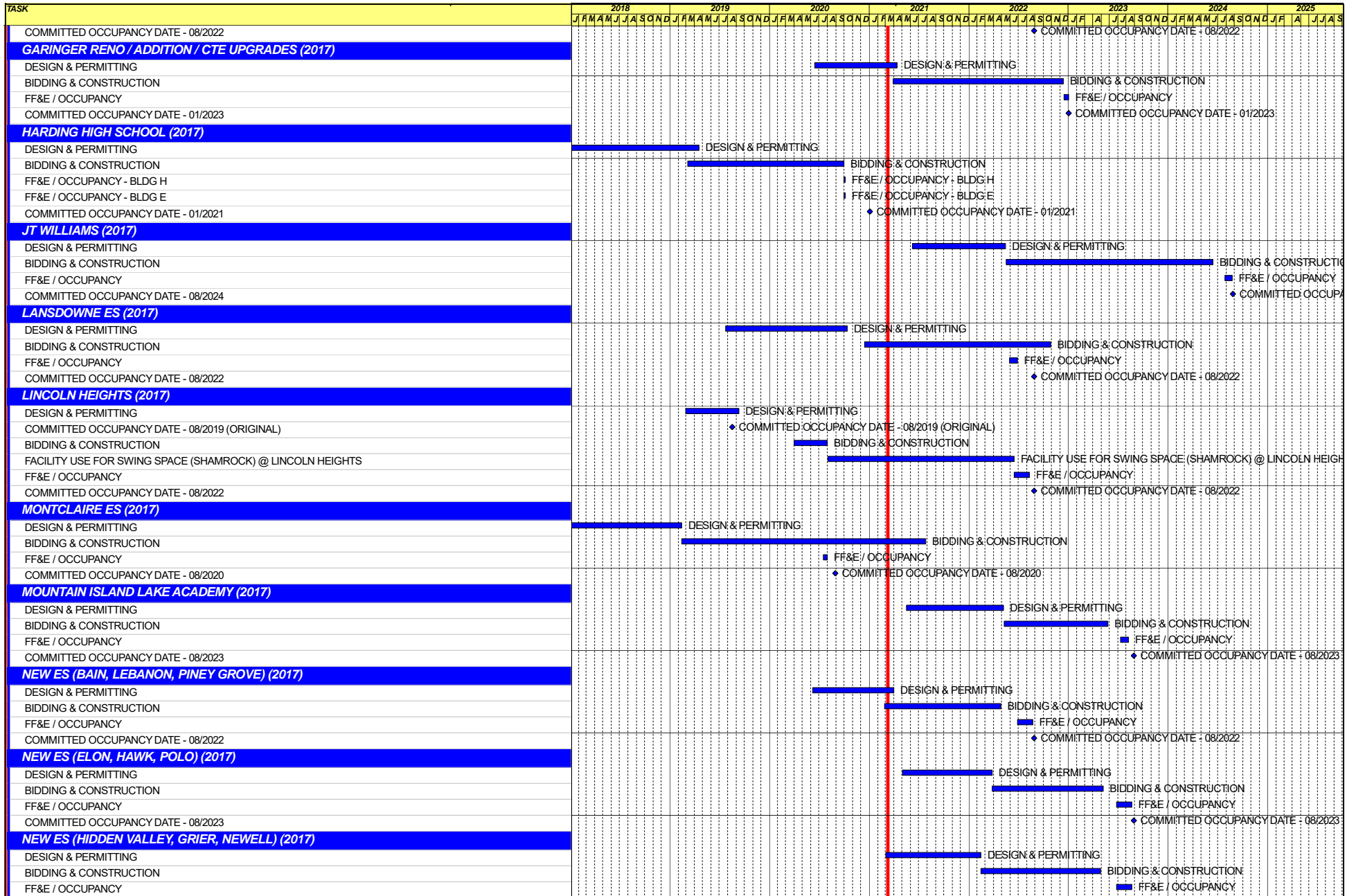
Creating a temporary space for students and staff to occupy during construction on a school’s campus has proven to be beneficial to the project’s schedule and cost and overall safety and efficiency of school operations. When the renovation or expansion of a facility is performed and the facility must remain functionally operational, there are benefits to the owner in using swing space.

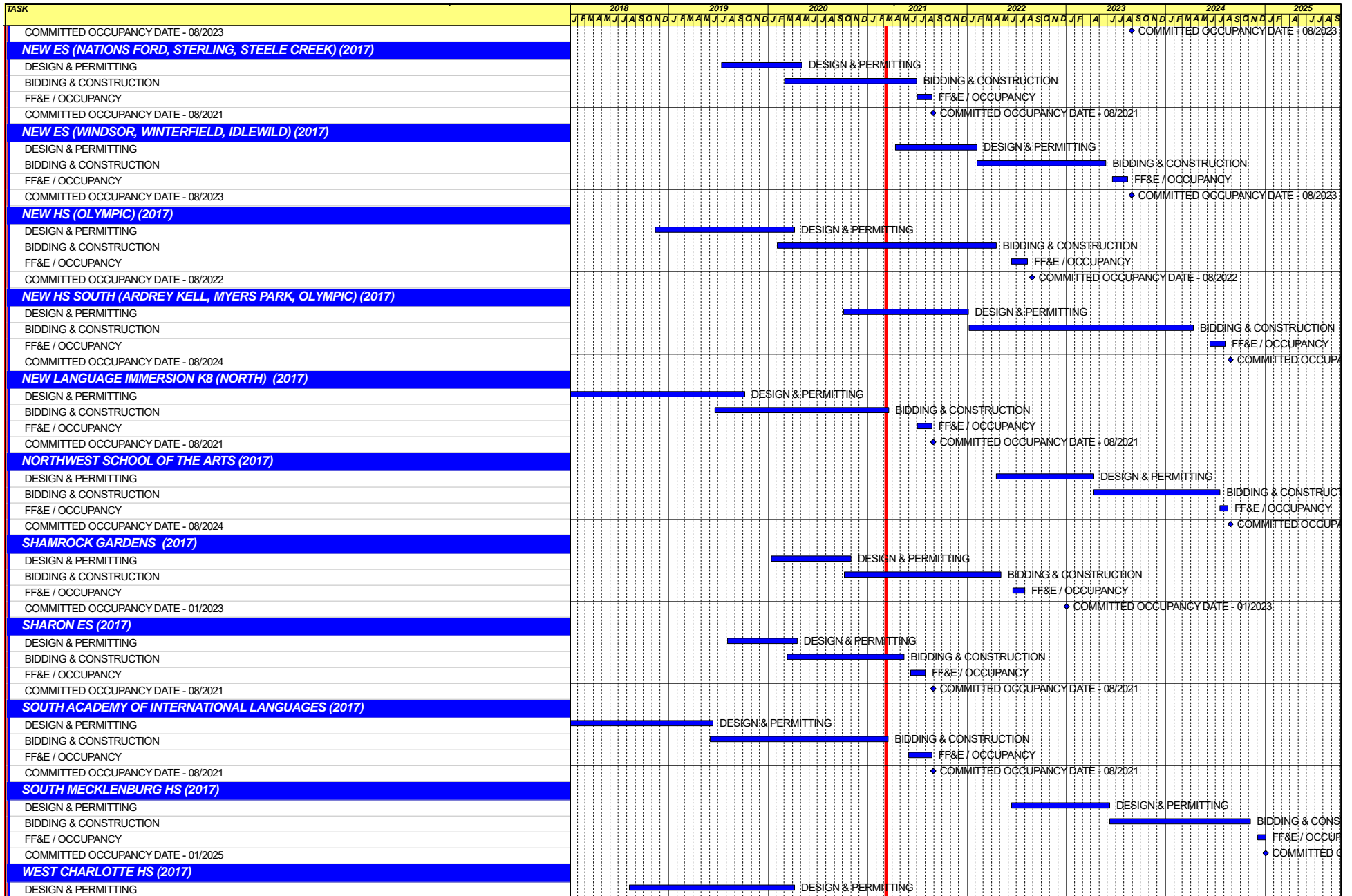
We have successfully utilized both onsite and offsite swings. The most desirable swings are “offsite” ones. Onsite swing using mobiles or modulars, likewise has been successfully used. The following is a summary of current swing options planned or in use.

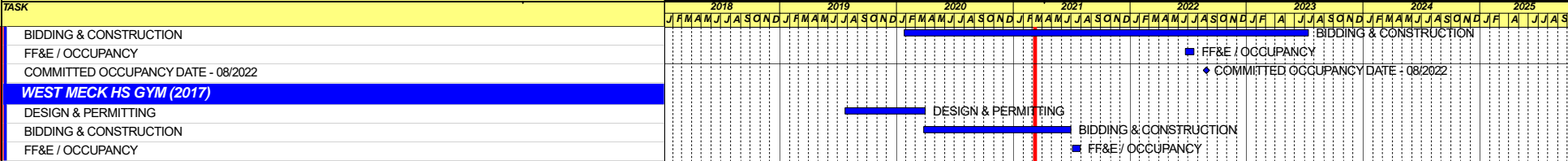
<u>School</u>	<u>No. of Mobiles/Relocation Site</u>	<u>Status (From – To)</u>
Shamrock	Lincoln Heights	August 2020 – August 2022











Capital Improvements Program  
***Projects in Design or Under Construction***

School	Architect	General Contractor/CM
<b>Projects In Design</b>		
CTE (Harding, Olympic, South) (17)	MPS	Branch Brownstone
Garinger Addition/Renovation & CTE (17)	LS3P	Balfour Beatty
Lincoln Heights Repurpose (17)	Neighboring Concepts	TBD
New ES (Bain, Lebanon Rd, Piney Grove) (17)	FWA	Metcon
New HS (South, Ardrey) (17)	Ratio	Messer
New ES (Elon,Hawk Ridge, Polo Ridge) (17)	Little Diversified	Balfour Beatty
New ES (Hidden Valley, JW Grier, Newell) (17)	ADW	Edifice, Inc.
New ES (Windsor, Winterfield, Idlewild) (17)	Neighboring Concepts	Rodgers-Holt Brothers
<b>Projects in Bid/Award/Construction Phase</b>		
Briarwood Elementary School Replacement (17)	ADW	New Atlantic
East Mecklenburg High School (17)	Morris Berg	Turner Construction
K-8 Language Immersion North (17)	ADW	New Atlantic
Lansdowne Elementary School Replacement (17)	Perkins Eastman	Edifice, Inc.
Montclair Elementary School (17)	WHN	Messer
New ES (Nations Ford, Sterling, Steele Creek) (17)	FWA	Metcon
New High School (Olympic Relief) (17)	Little Diversified	Edifice, Inc.
Shamrock Gardens Elementary School Replacement (17)	Little Diversified	Rodgers-Holt Brothers
Sharon Elementary School (17)	Clark Nexsen	Samet
South Academy of International Languages (17)	FWA	Messer
West Charlotte High School (17)	LS3P	Rodgers-Holt Brothers
West Mecklenburg Gym (17)	Moseley	Barnhill/DA Everett

Capital Improvements Program  
***Projects Substantially Completed/Closed \****

School	Turnover Year	Architect	General Contractor
Collinswood Language Academy (17)	Aug-20	Perkins Eastman	Turner Construction
Harding High School Renovation (17)	Aug-20	SFLA	Barnhill Contracting
Rea Farms STEAM Academy (13)	Aug-20	Little Diversified	Balfour Beatty
Ashley Park K-8 Conversion (13)	Aug-19	ADW	Turner Construction
Druid Hills K-8 Conversion (13)	Aug-19	ADW	Edifice, Inc.
Selwyn Elementary (13)	Aug-19	Clark Nexsen	Balfour Beatty
Charlotte Mecklenburg Academy (17)	Aug-19	KSQ	Edifice, Inc.
Davidson K-8 (13)	Aug-19	Little Diversified	Gilbane
CTE - North Mecklenburg High (13)	Aug-19	LS3P	Shiel Sexton
CTE - Garinger (13)	Mar-19	LS3P	Hostetter & Son
CTE - Independence (13)	Mar-19	LS3P	D.E. Brown
CTE - West Mecklenburg (13)	Mar-19	LS3P	Hostetter & Son
Charlotte East Language Academy (13)	Aug-18	Morris Berg	Edifice, Inc
Myers Park High School Phase 3 (13)	Aug-18	Boomerang Design	BE&K
Northridge Middle (13)	Aug-18	Morris Berg	Barnhill Contracting
Myers Park High Bldg 2 (13)	Feb-18	Boomerang Design	BE&K
East Mecklenburg High Addition (13)	Jan-18	Bergman (fna Gantt Huberman)	Edifice, Inc.
J.M. Alexander Middle (13)	Aug-17	FWA Group	Balfour Beatty
Northwest School of the Arts Renovation (13)	Aug-17	Moseley	Turner Construction
Renaissance West STEAM Academy (13)	Aug-17	Little Diversified	Rodgers Construction
South Mecklenburg High Addition (13)	Jul-17	SFLA	Barnhill Contracting
Myers Park High Bldg 1 (13)	Sep-16	Boomerang	KBR
Statesville Road Elementary (13)	Aug-16	ADW	JE Dunn
Nations Ford Elementary (13)	Aug-16	Wash Hatem Nelson	Messer Construction
Olympic High Addition (13)	Aug-16	McMillan, Pazdan, Smith	Turner Construction
Lawrence Orr Elementary (07)	Aug-15	Cort Architectural Group	DH Griffin/Metcon
Parkside Elementary (07)	Aug-15	Wash Hatem Nelson	Clancy & Theys
Hawthorne High Renovations (07)	Aug-15	Morris-Berg	Balfour Beatty
Newell Elementary (07)	Aug-15	Perkins Eastman	New Atlantic Contracting
Ranson Middle (07)	Aug-15	Morris-Berg	Edifice, Inc.
Vance High	Jan-15	LS3P	Matthews Construction Co., Inc.
Garinger High - Renovations/Addition	Aug-14	Adams Group Architects	Turner Construction
Olympic High - Stadium	Aug-14	Site Solutions	Turner Construction
West Mecklenburg High - Stadium	Aug-14	Site Solutions	Turner Construction
Collinswood - Indoor Air Quality	Aug-14	PEA	The Bowers Group
Lansdowne - Indoor Air Quality	Aug-14	AeroRaq	Tyler 2
McKee Road - Indoor Air Quality	Aug-14	McCracken & Lopez	Godfrey Construction
Garinger High - Track & Field	Jul-14	Site Solutions	Turner Construction
Independence High - Gym	Jun-14	Shook Kelly	Shelco, Inc. (CM)
Palisades Park Elementary	May-14	Wash Hatem Nelson	Clancy & Theys
East Mecklenburg High Auditorium	Jan-14	Gantt Huberman Associates	Godfrey Construction Co., Inc.
Pineville Elementary	Aug-13	Cort Architectural Group	Beam Construction Co., Inc.
Bain Elementary	Aug-13	ADW	Edison Foard
Grand Oak Elementary	Aug-13	ADW	Matthews Construction Co., Inc.
McClintock Middle	Aug-13	FWA Group	Shelco, Inc.
Sedgefield Elementary Demolition	Oct-12	Cort Architectural Group	EHG, LLC
Alexander Graham Middle Gym Reno	Aug-12	MBAJ Architecure	Edison Foard
First Ward - Demolition & Bus lot	Aug-12	MBAJ Architecure	T.K. Browne
South Meck High Parking Lot Renovation	Aug-12	Little Diversified	Sorenson Gross
Cochrane Middle - Kitchen	Aug-11	MBAJ Architecure	Sorenson Gross
Hough High	Aug-10	Little Diversified	Rodgers Construction
Rocky River High	Aug-10	Little Diversified	Balfour Beatty

Capital Improvements Program  
***Projects Substantially Completed/Closed*** \*

School

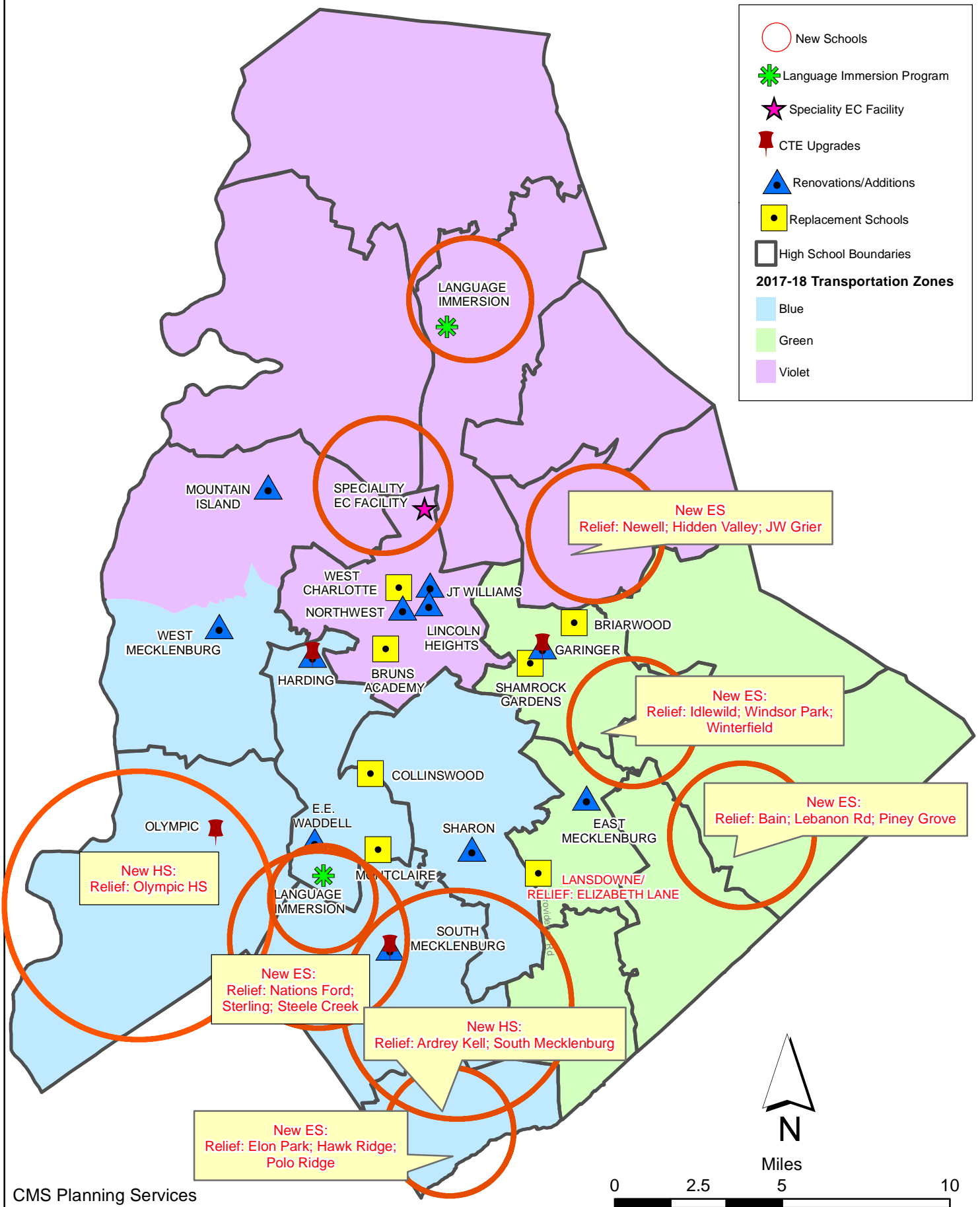
Turnover Year

Architect

General Contractor

*Projects closed prior to 2010 are not shown*

# CMS Capital Improvement Plan 2017 Bond Projects





# PROJECT STATUS REPORT



## Monthly Project Status 2017 Bond Summary April 2021

Project	Current Project Estimate	Project Scope	** Occupy On	Design Phase	Construction Progress	Project Status
Briarwood Elementary School (17)	\$ 31,962,730	45-classroom replacement facility; replaces school built in 1956.	August 2021	Complete	60 %	The construction manager for the Briarwood Elementary Replacement School completed the exterior brick veneer on the project. The HVAC units have been started and are providing conditioned air throughout the facility. The ceiling grid installation has progressed into the administration and first floor classroom areas. Casework arrived on site and installation is beginning on the second floor classroom wing. The painter applied the final coats of paint in the classroom wings and administration areas while the first coat was applied in the multipurpose/cafeteria. The curb and gutter was installed at the front entry in preparation for stone base and asphalt.
Bruns Academy (17)	\$ 39,784,927	New 45-classroom elementary school (K-5); replaces old school built in 1969.	August 2024	Not Started	0 %	This project is scheduled to start design Spring 2022.
Career and Technology Education (17)	\$ 10,159,765	Phase I CTE upgrades at Olympic, Harding, Garinger and South Mecklenburg.	January 2023	Construction Documents	0 %	The team is reviewing the construction manager's GMP pricing for the CTE projects at Harding, South Mecklenburg and Olympic. The projects are scheduled for board approval in May. The Harding project consists of renovations to existing classrooms in the auditorium building to develop a suite of technology classrooms. The project at Olympic includes electrical up fits to the existing carpentry lab which expands the curriculum to include demonstration learning booths for plumbing and electrical trades. The project at South Mecklenburg consists of renovating the old kitchen area into a culinary arts lab and classroom.
Charlotte-Mecklenburg Academy (17)	\$ 18,079,506	New EC school located on the old Statesville Elementary School site.	August 2019	Complete	100 %	Project is complete.

# Monthly Project Status

2017 Bond Summary

April 2021

Project	Current Project Estimate	Project Scope	** Occupy On	Design Phase	Construction Progress	Project Status
Collinswood Language Academy (17)	\$ 42,272,540	New 63-classroom K-8 facility on the site of the Smith Family Center.	August 2020	Complete	100 %	Project is complete.
E.E. Waddell (17)	\$ 5,137,367	Repurpose current E.E. Waddell to reopen as a magnet high school.	August 2022	Schematic	0 %	Planning in preparation for design start in 2nd Qtr 2021.
East Mecklenburg High School (17)	\$ 15,058,594	This project will provide for the design, and construction of a new 30 classroom building.	August 2022	Complete	5 %	The construction manager for East Mecklenburg High School installed the erosion control requirements and began grading. The initial grading will include removal of unsuitable soils and replacement with compacted structural fill. The underground infrastructure to support the new building is also being coordinated with the public utilities.
Garinger High School (17)	\$ 14,486,979	Project includes the design and construction for renovations of 300 building and a new 16 classroom building.	January 2023	Complete	0 %	The Garinger High School Addition/Renovation and CTE project's construction manager has begun the bid phase and it is scheduled to for board approval in June. The project's scope consists of a 2-story building with 16 classrooms and modifications to the existing 300 building.
Harding High School (17)	\$ 14,530,263	Renovation of the kitchen, cafeteria, existing gym (aux) and the addition of a new gym.	August 2020	Complete	99 %	Construction Manager has change items that will be completed summer 2021 and is finalizing financial reconciliation.
JT Williams (17)	\$ 15,732,600	Project includes building renovations to J.T. Williams Montessori magnet.	August 2024	Pre-Schematic	0 %	Design is scheduled to start summer of 2021.
Lansdowne Elementary School (17)	\$ 37,128,834	New 45-classroom school; replaces old school built in 1959 and relieve crowding at Elizabeth Lane ES.	August 2022	Complete	5 %	The Lansdowne Elementary School construction manager has moved into grading for the new building pad. The top soil has been stripped and lime stabilization has been completed for the building pad. The underground existing sanitary sewer lines that support the existing building are being rerouted around the new building footprint.
Lincoln Heights Elementary School (17)	\$ 4,588,675	Repurpose and reopen as magnet school.	August 2022	Construction Documents	0 %	Shamrock Gardens will be utilizing the Lincoln Heights Elementary building as swing space August 2020 - August 2022. Playgrounds were replaced and new digital signage was installed summer 2020.

# Monthly Project Status

2017 Bond Summary

April 2021

Project	Current Project Estimate	Project Scope	** Occupy On	Design Phase	Construction Progress	Project Status
Montclair Elementary School (17)	\$ 28,559,390	New 45-classroom replacement facility replacing school built in 1958.	August 2020	Complete	98 %	The construction manager for the Montclair Elementary School turned the new bus lot over to the school for use, but maintained the area between the parking and bus lots to allow the canopy to be installed. The existing bus lot was removed, and the area was final graded to the playfield level. The playground enclosures and equipment were installed. Final grading for the new bus entry was performed along with the installation of curb and gutter; stone and asphalt will be installed next month. Landscaping for the entire project is underway and remaining site work is being completed.
Mountain Island Lake Academy (17)	\$ 10,488,400	K-8 Phase 2 - New gymnasium and specialty classrooms.	August 2023	Pre-Schematic	0 %	Project design to be initiated in the spring of 2021.
New Elementary School (Bain, Lebanon, Piney Grove) (17)	\$ 31,455,951	New 45-classroom elementary school; relieves crowding at Bain, Lebanon Road, Piney Grove.	August 2022	Complete	0 %	The New Elementary School (Bain, Lebanon, Piney Grove Relief) construction manager has completed the bid phase and the project will be submitted to the board for approval in May. The project is scheduled for occupancy in August 2022.
New Elementary School (Elon, Hawk Ridge, Polo Relief) (17)	\$ 43,476,676	New 45-classroom elementary school to relieve Elon, Hawk Ridge, Polo.	August 2023	Schematic	0 %	The New Elementary School (Elon, Hawk Ridge, Polo Relief) architect has submitted the pre-schematic design submittal for CMS review and comments.
New Elementary School (Hidden Valley, JW Grier, Newell) (17)	\$ 34,697,022	New 45-classroom elementary school; relieves overcrowding at Hidden Valley, J.W. Grier, Newell.	August 2023	Schematic	0 %	The New Elementary School (Hidden Valley, JW Grier, Newell Relief) architect continues to progress through the schematic design phase.
New Elementary School (Nations, Sterling, Steele Relief) (17)	\$ 31,572,550	New 45-classroom elementary school to relieve Nations Ford, Sterling, and Steele Creek.	August 2021	Complete	68 %	The New Elementary School (Nations, Sterling, Steele Creek Relief) continued its push to the end. Preparation work started for the VCT and casework for installation in early May. Ceiling grid installation continued throughout the building for MEP devices to be placed. Temporary window systems are being removed and permanent systems installed. Sidewalks were installed around the building and topsoil placed in preparation for grass and plantings.

# Monthly Project Status

2017 Bond Summary

April 2021

Project	Current Project Estimate	Project Scope	** Occupy On	Design Phase	Construction Progress	Project Status
New Elementary School (Windsor, Winterfield, Idlewild Relief) (17)	\$ 37,197,022	New 45-classroom elementary school to relieve Windsor, Winterfield, and Idlewild ES.	August 2023	Schematic	0 %	The New Elementary School (Windsor, Winterfield, Idlewild Relief) architect has progressed into the schematic design phase. Due diligence activities continue to be delayed due to site acquisition issues. Alternate building sites are being considered.
New High School (17) (Olympic Relief)	\$ 109,908,793	New 100 classroom high school; relieves crowding at Olympic High School.	August 2022	Complete	46 %	The construction manager for the New High School Olympic Relief continues to work throughout the site with a focus on parking lots and the stadium. Asphalt was installed on a portion of the student/staff lot; stone base was installed in the other locations. The home and visitor bleachers were installed, and the below grade masonry was installed for the athletic buildings. Masonry and exterior brick continued throughout the building. Exterior studs, sheathing and spray foam continued at the classroom wings. Roofing was installed in areas as they became available and mechanical, electrical, plumbing (MEP) rough-in's continued above ceilings and in walls.
New High School (South, Ardrey) (17)	\$ 154,930,460	New 100 classroom high school to relieve South Mecklenburg, Ardrey Kell and Myers Park HS.	August 2024	Design Development	0 %	The New High School (South, Ardrey Relief) architect continues to progress into the design development phase and is scheduled for completion in late April 2021. Due diligence and land acquisition activities continue to progress.

# Monthly Project Status

2017 Bond Summary

April 2021

Project	Current Project Estimate	Project Scope	** Occupy On	Design Phase	Construction Progress	Project Status
New K-8 School (North) (17)	\$ 43,359,367	New 66 classroom K-8 Language Immersion facility located on the old J.M. Alexander Middle School site.	August 2021	Complete	95 %	The construction manager for the New K-8 Language Immersion North project is working through final inspections by Mecklenburg County Building Standards and County Fire. These inspections have identified that the facility will require a booster pump on the fire sprinkler system to alleviate issues with lower than anticipated water pressure from Charlotte Water. Building modifications are taking place and the pump has been ordered. Otherwise the building and all finishes is substantially complete; furnishings will be allowed once the pump is installed and approved which is scheduled for July. The Hambright Road improvements have started and the existing underground utilities have been relocated. The existing track has been resurfaced and will receive final topping and striping shortly. The team is awaiting the school naming and mascot approval; this will allow school signage and gym flooring to be finalized.
Northwest School of the Arts (17)	\$ 20,467,000	Replace classroom building built in 1952 and build classroom addition that supports program.	August 2024	Not Started	0 %	Project to be funded by the County in FY22, planning underway.
Shamrock Gardens Elementary School (17)	\$ 35,358,351	New 45-classroom replacement facility.	August 2022	Complete	8 %	The Shamrock Gardens Elementary School construction manager completed the aggregate piers and lime stabilization. The footings have started in the kitchen/cafeteria and the electrician and plumber have mobilized to begin below slab rough-ins. Installation of erosion control measures continued and grading of the staff parking lot started.
Sharon Elementary School (17)	\$ 9,475,862	Add 16 classroom building and increase capacity of cafeteria.	August 2021	Complete	88 %	The construction manager for the Sharon Elementary School Building Addition has moved into final finishes. The VCT floors are complete and bathroom wall and floor tile is installed. The architect and design engineers are completing their punch list. The exterior sidewalks and final grading are nearing completion. The cafeteria expansion has completed final finishes and building inspections are ongoing.

# Monthly Project Status

2017 Bond Summary

April 2021

Project	Current Project Estimate	Project Scope	** Occupy On	Design Phase	Construction Progress	Project Status
South Academy of International Languages (fka New K-8 School (South) (17)	\$ 42,959,367	New 71 classroom K-8 Language Immersion facility located on the old Nations Ford Elementary School site.	August 2021	Complete	99 %	The construction manager for the South Academy of International Languages (FNA New K-8 Language Immersion South) worked diligently on the punch list and commissioning items and has the list to a minimal amount. Furniture, fixtures and equipment began mid-April and will continue into May. The staff is currently scheduled to move in mid-June.
South Mecklenburg High School (17)	\$ 15,622,927	Renovate/replace two classroom buildings built in 1958 to upgrade learning conditions.	January 2025	Not Started	0 %	Project to be funded by the County in FY22, planning underway.
West Charlotte High School (17)	\$ 109,977,166	New 100 classroom school to replace current facility built in 1954.	August 2022	Complete	43 %	The West Charlotte High School construction manager has now completed the building structure. The load bearing masonry walls and steel erection is complete and floor slabs have been poured. The MEP contractors are working on building rough-ins throughout the facility. The roofing contractor continues to install the roofing membrane now that roof deck is completed. The brick veneer is progressing around the exterior elevations. The athletic buildings around the stadium have moved into interior MEP rough-ins. The site contractor has started construction of the north parking lot.
West Mecklenburg High School (17)	\$ 10,850,902	Provide new gymnasium, the existing gymnasium will become the auxiliary.	August 2021	Complete	68 %	The West Mecklenburg High School Gym construction manager has the building completely dried and the MEP trades are finalizing rough-ins. The bathroom floor/wall tile is progressing and the painter is installing final finishes. Roof top units have been set and energized and conditioned air is running, the gym wood floor will follow. The site contractor is pouring sidewalks and maintaining erosion control.



# MONTHLY PROJECT PHOTOS

## PROJECT PROGRESS PHOTOS

---



Briarwood Elementary School Replacement



Briarwood Elementary School Replacement



## PROJECT PROGRESS PHOTOS



Briarwood Elementary School Replacement



## PROJECT PROGRESS PHOTOS



Briarwood Elementary School Replacement



Montclair Elementary School Replacement



# PROJECT PROGRESS PHOTOS



**Messer**  
WeAreBuilding.

CMS Montclair Elementary School

Image # 74  
Date : 04.21.2021  
Photo 888.542.0231

## Montclair Elementary School Replacement



# PROJECT PROGRESS PHOTOS

---



K-8 Language Immersion North

## PROJECT PROGRESS PHOTOS



K-8 Language Immersion North

## PROJECT PROGRESS PHOTOS



K-8 Language Immersion North



## PROJECT PROGRESS PHOTOS

---



K-8 Language Immersion North

# PROJECT PROGRESS PHOTOS

---



South Academy of International Languages  
(fka K-8 Language Immersion South)



## PROJECT PROGRESS PHOTOS



South Academy of International Languages  
(fka K-8 Language Immersion South)

## PROJECT PROGRESS PHOTOS

---



South Academy of International Languages  
(fka K-8 Language Immersion South)



# PROJECT PROGRESS PHOTOS



**Messer**  
WeAreBuilding.

CMS K-8 South

Image # 71  
Date : 04.21.2021  
Photo 888.542.0231

South Academy of International Languages  
(fka K-8 Language Immersion South)



# PROJECT PROGRESS PHOTOS

---



New High School Olympic Relief

## PROJECT PROGRESS PHOTOS

---



New High School Olympic Relief



## PROJECT PROGRESS PHOTOS



New High School Olympic Relief



## PROJECT PROGRESS PHOTOS

---



New High School Olympic Relief

## PROJECT PROGRESS PHOTOS

---



New High School Olympic Relief



# PROJECT PROGRESS PHOTOS

---



West Charlotte High School Replacement



# PROJECT PROGRESS PHOTOS



West Charlotte High School Replacement



## PROJECT PROGRESS PHOTOS

---



West Charlotte High School Replacement



## PROJECT PROGRESS PHOTOS

---



West Charlotte High School Replacement

## PROJECT PROGRESS PHOTOS

---



West Charlotte High School Replacement



## PROJECT PROGRESS PHOTOS



**New Elementary School**  
(Nations Ford, Sterling, Steele Creek Relief)



**New Elementary School**  
(Nations Ford, Sterling, Steele Creek Relief)



## PROJECT PROGRESS PHOTOS

---



**New Elementary School**  
(Nations Ford, Sterling, Steele Creek Relief)

# PROJECT PROGRESS PHOTOS

---



**New Elementary School**  
(Nations Ford, Sterling, Steele Creek Relief)

## PROJECT PROGRESS PHOTOS

---



Sharon Elementary School Addition



## PROJECT PROGRESS PHOTOS

---



Sharon Elementary School Addition

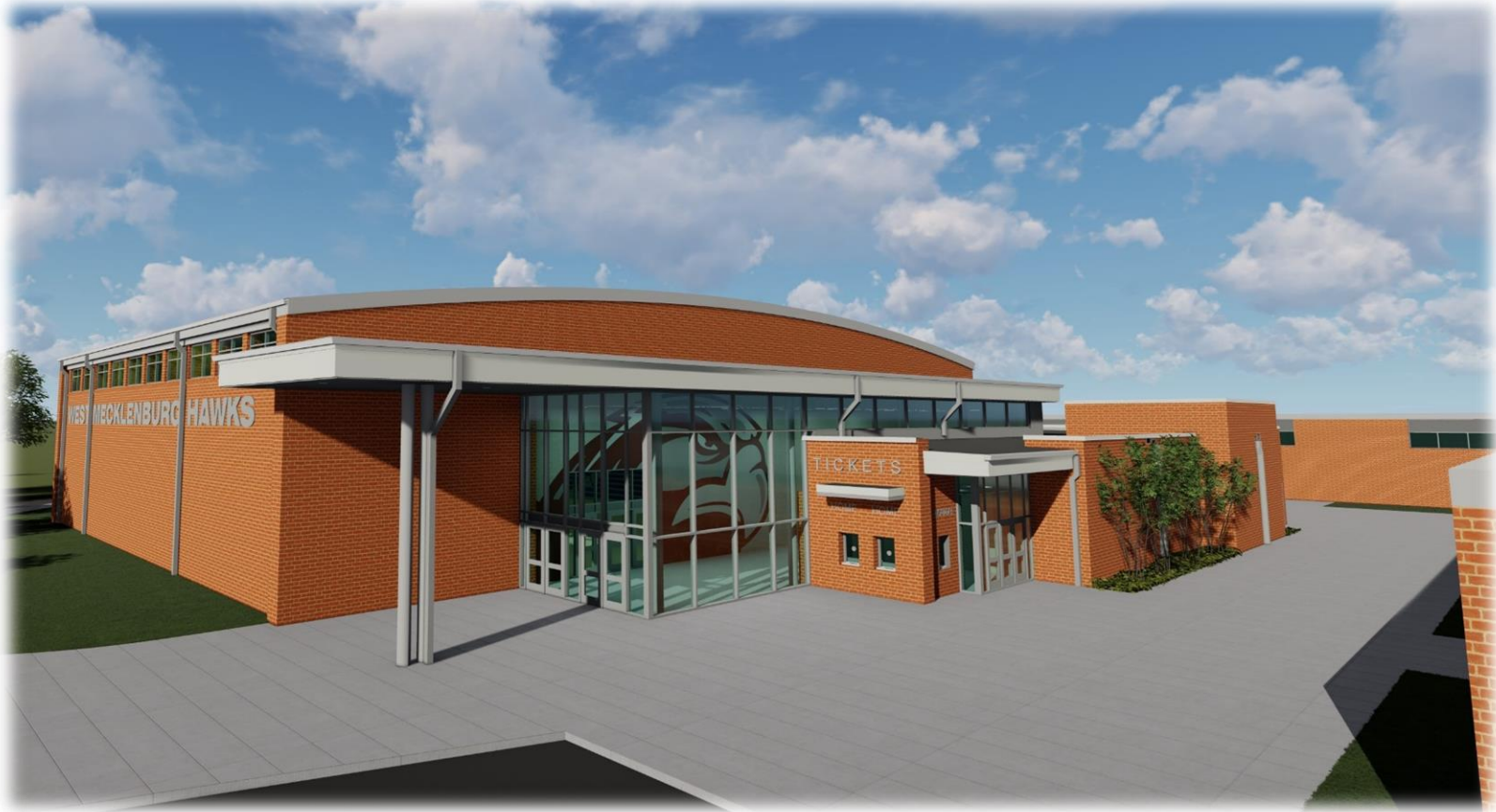




Sharon Elementary School Addition

## PROJECT PROGRESS PHOTOS

---



West Mecklenburg High School Gym

## PROJECT PROGRESS PHOTOS

---



West Mecklenburg High School Gym



## PROJECT PROGRESS PHOTOS



West Mecklenburg High School Gym

# PROJECT PROGRESS PHOTOS

---



Shamrock Gardens Elementary School



## PROJECT PROGRESS PHOTOS

---



Shamrock Gardens Elementary School



## PROJECT PROGRESS PHOTOS

---



Shamrock Gardens Elementary School

## PROJECT PROGRESS PHOTOS

---



Lansdowne Elementary School



## PROJECT PROGRESS PHOTOS

---



Lansdowne Elementary School

## PROJECT PROGRESS PHOTOS

---



Lansdowne Elementary School



## PROJECT PROGRESS PHOTOS

---



East Mecklenburg High School

## PROJECT PROGRESS PHOTOS



East Mecklenburg High School

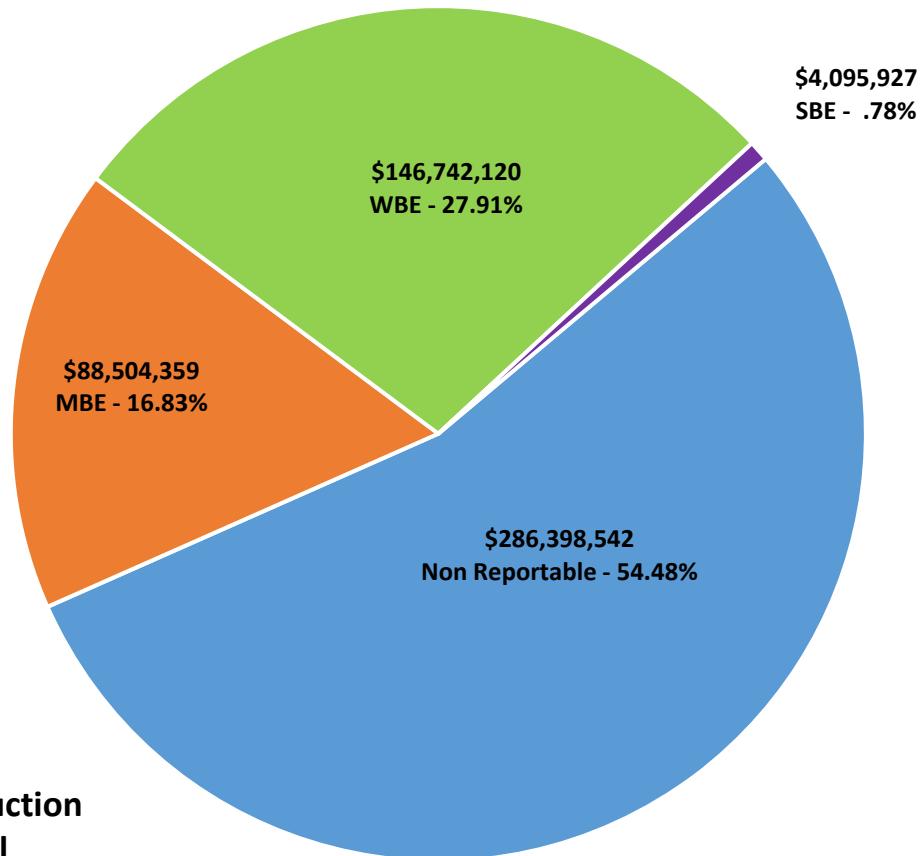
# MWSBE PARTICIPATION REPORT



Facility	Contract Amount	African American MBE\$	%	Other MBE \$	%	Total MBE \$	%	Other WBE \$	%	Other SBE \$	%	Total	%
<u>Briarwood Elementary School (17)</u>	\$28,696,836	\$3,521,005	12.27%	\$2,326,100	8.11%	\$5,847,105	20.38%	\$1,111,985	3.87%	\$82,000	0.29%	\$7,041,090	24.54%
<u>Bruns Academy (17)</u>	\$0	\$0	#Num!	\$0	#Num!	\$0	#Num!	\$0	#Num!	\$0	#Num!	\$0	#Num!
<u>Career and Technology Education (17)</u>	\$1,831,259	\$0	0.00%	\$6,271	0.34%	\$6,271	0.34%	\$725	0.04%	\$0	0.00%	\$6,996	0.38%
<u>Charlotte-Mecklenburg Academy (17)</u>	\$17,035,852	\$198,536	1.17%	\$1,029,192	6.04%	\$1,227,728	7.21%	\$872,755	5.12%	\$13,200	0.08%	\$2,113,683	12.41%
<u>Collinswood Language Academy (17)</u>	\$38,633,550	\$412,763	1.07%	\$1,786,047	4.62%	\$2,198,810	5.69%	\$11,144,362	28.85%	\$257,800	0.67%	\$13,600,972	35.21%
<u>E.E. Waddell (17)</u>	\$152,000	\$0	0.00%	\$0	0.00%	\$0	0.00%	\$10,950	7.20%	\$0	0.00%	\$10,950	7.20%
<u>East Mecklenburg High School (17)</u>	\$12,409,477	\$0	0.00%	\$107,650	0.87%	\$107,650	0.87%	\$12,500	0.10%	\$2,871	0.02%	\$123,021	0.99%
<u>Garinger High School (17)</u>	\$312,137	\$0	0.00%	\$37,000	11.85%	\$37,000	11.85%	\$20,525	6.58%	\$0	0.00%	\$57,525	18.43%
<u>Harding High School (17)</u>	\$12,919,361	\$1,504,505	11.65%	\$310,356	2.40%	\$1,814,862	14.05%	\$3,846,831	29.78%	\$176	0.00%	\$5,661,869	43.82%
<u>JT Williams (17)</u>	\$125,000	\$0	0.00%	\$0	0.00%	\$0	0.00%	\$0	0.00%	\$0	0.00%	\$0	0.00%
<u>Lansdowne Elementary School (17)</u>	\$30,608,179	\$14,000	0.05%	\$104,400	0.34%	\$118,400	0.39%	\$45,105	0.15%	\$223,625	0.73%	\$387,130	1.26%
<u>Lincoln Heights Elementary School (17)</u>	\$432,426	\$92,274	21.34%	\$18,800	4.35%	\$111,074	25.69%	\$0	0.00%	\$74,503	17.23%	\$185,577	42.92%
<u>Montclair Elementary School (17)</u>	\$26,155,778	\$3,096,412	11.84%	\$2,142,645	8.19%	\$5,239,057	20.03%	\$5,279,462	20.18%	\$390,227	1.49%	\$10,908,746	41.71%
<u>Mountain Island Lake Academy (17)</u>	\$692,000	\$0	0.00%	\$0	0.00%	\$0	0.00%	\$0	0.00%	\$0	0.00%	\$0	0.00%
<u>New Elementary School (Bain, Lebanon)</u>	\$1,771,565	\$10,000	0.56%	\$35,500	2.00%	\$45,500	2.57%	\$0	0.00%	\$84,390	4.76%	\$129,890	7.33%
<u>New Elementary School (Elon, Hawk)</u>	\$1,920,205	\$0	0.00%	\$0	0.00%	\$0	0.00%	\$45,490	2.37%	\$0	0.00%	\$45,490	2.37%
<u>New Elementary School (Hidden Valley)</u>	\$1,784,550	\$0	0.00%	\$0	0.00%	\$0	0.00%	\$0	0.00%	\$300	0.02%	\$300	0.02%
<u>New Elementary School (Nations, Stearns)</u>	\$26,418,711	\$772,455	2.92%	\$19,833,781	75.07%	\$20,606,236	78.00%	\$4,067,896	15.40%	\$238,129	0.90%	\$24,912,261	94.30%
<u>New Elementary School (Windsor, Wood)</u>	\$2,010,570	\$11,000	0.55%	\$0	0.00%	\$11,000	0.55%	\$0	0.00%	\$0	0.00%	\$11,000	0.55%
<u>New High School (17) (Olympic Relief)</u>	\$98,154,986	\$14,826,631	15.11%	\$4,093,400	4.17%	\$18,920,031	19.28%	\$7,232,870	7.37%	\$666,450	0.68%	\$26,819,351	27.32%
<u>New High School (South, Ardrey) (17)</u>	\$6,210,906	\$13,500	0.22%	\$96,500	1.55%	\$110,000	1.77%	\$50,000	0.81%	\$1,125	0.02%	\$161,125	2.59%
<u>New K-8 School (North) (17)</u>	\$38,155,412	\$1,964,711	5.15%	\$1,909,480	5.00%	\$3,874,191	10.15%	\$4,583,546	12.01%	\$418,949	1.10%	\$8,876,686	23.26%
<u>Shamrock Gardens Elementary School (17)</u>	\$28,240,363	\$1,788,332	6.33%	\$1,431,447	5.07%	\$3,219,779	11.40%	\$22,595,506	80.01%	\$282,184	1.00%	\$26,097,469	92.41%
<u>Sharon Elementary School (17)</u>	\$8,479,079	\$259,494	3.06%	\$399,099	4.71%	\$658,593	7.77%	\$1,211,518	14.29%	\$208,346	2.46%	\$2,078,457	24.51%
<u>South Academy of International Languages (17)</u>	\$37,765,744	\$5,077,406	13.44%	\$2,159,095	5.72%	\$7,236,501	19.16%	\$9,880,960	26.16%	\$309,838	0.82%	\$17,427,300	46.15%

Facility	Contract Amount	African American MBE\$	%	Other MBE \$	%	Total MBE \$	%	Other WBE \$	%	Other SBE \$	%	Total	%
<u>West Charlotte High School (17)</u>	\$94,938,900	\$15,116,534	15.92%	\$1,300,350	1.37%	\$16,416,884	17.29%	\$72,580,016	76.45%	\$562,104	0.59%	\$89,559,003	94.33%
<u>West Mecklenburg High School (17)</u>	\$9,886,102	\$279,936	2.83%	\$417,752	4.23%	\$697,688	7.06%	\$2,149,117	21.74%	\$279,710	2.83%	\$3,126,515	31.63%
<b>Grandtotal</b>	\$525,740,948	\$48,959,494	9.31%	\$39,544,865	7.52%	\$88,504,359	16.83%	\$146,742,120	27.91%	\$4,095,927	0.78%	\$239,342,406	45.52%

## MWSBE Participation 2017 Bond Projects



**Design and Construction  
Contract Total  
\$525,740,948**



# PROJECT CONTROLS

**CHARLOTTE-MECKLENBURG BOARD OF EDUCATION  
2013 BOND SERIES-CAPITAL IMPROVEMENT PROGRAM  
BUDGET STATUS REPORT**

	Original Project Budget	Current Project Budget	Committed Amount	Approved Change Orders	Total Committed	Pending Commitments	To Be Committed	Prev Paid To Date	Paid To Date	Balance To Complete	Monthly Expenditure
	(A)	(B)	(C)	(D)	(E)=C+D	(F)	(G)=(B-E-F)	(H)	(I)	(J)=(B-I)	(K)=(I-H)
<b><u>A. REPLACEMENT &amp; RENOVATIONS</u></b>											
1 Career & Technology Education Institutes Phase 1:	\$8,640,000	\$18,256,861	\$7,064,749	\$333,080	\$7,397,829	\$0	\$10,859,032	\$7,329,247	\$7,331,747	\$10,925,114	\$2,500
2 Davidson K-8 Conversion	\$9,500,000	\$13,610,000	\$2,130,689	\$11,364,591	\$13,495,280	\$0	\$114,720	\$13,455,524	\$13,455,637	\$154,363	\$114
3 J.M. Alexander Middle Replacement	\$30,672,000	\$29,845,539	\$4,502,518	\$25,343,021	\$29,845,539	\$0	\$0	\$29,845,539	\$29,845,539	\$0	\$0
4 Nations Ford Elementary Replacement	\$19,440,000	\$19,231,603	\$3,958,869	\$15,272,733	\$19,231,603	\$0	\$0	\$19,231,604	\$19,231,604	\$0	\$0
5 Northwest School of the Arts	\$12,420,000	\$12,868,718	\$2,047,917	\$10,820,801	\$12,868,718	\$0	\$0	\$12,868,719	\$12,868,719	\$0	\$0
6 Oakhurst STEAM Magnet Elementary/Starmount	\$5,940,000	\$5,407,812	\$3,471,397	\$1,936,415	\$5,407,812	\$0	\$0	\$5,407,812	\$5,407,812	\$0	\$0
7 Pre-K-8 Conversions Phase II: Ashley Park/ Bruns	\$24,732,000	\$19,791,457	\$4,167,669	\$15,563,538	\$19,731,207	\$0	\$60,250	\$19,700,807	\$19,700,807	\$90,650	\$0
8 Selwyn Elementary	\$2,592,000	\$4,687,004	\$744,378	\$3,881,906	\$4,626,284	\$0	\$60,720	\$4,624,831	\$4,624,831	\$62,172	\$0
9 Statesville Road Elementary	\$20,340,000	\$20,648,510	\$5,081,473	\$15,567,037	\$20,648,509	\$0	\$0	\$20,648,509	\$20,648,509	\$0	\$0
<b>Total Replacement &amp; Renovations</b>	<b>\$134,276,000</b>	<b>\$144,347,503</b>	<b>\$33,169,659</b>	<b>\$100,083,122</b>	<b>\$133,252,781</b>	<b>\$0</b>	<b>\$11,094,722</b>	<b>\$133,112,591</b>	<b>\$133,115,205</b>	<b>\$11,232,298</b>	<b>\$2,614</b>
<b><u>B. RESPONSE TO ENROLLMENT GROWTH</u></b>											
1 East Mecklenburg High Addition	\$12,744,000	\$10,988,287	\$3,369,684	\$7,618,603	\$10,988,287	\$0	\$0	\$10,988,287	\$10,988,287	\$0	\$0
2 Myers Park High Addition	\$22,248,000	\$11,070,580	\$1,207,493	\$9,833,448	\$11,040,942	\$0	\$29,639	\$11,040,941	\$11,040,941	\$29,639	\$0
3 Northridge Middle Addition	\$6,448,000	\$6,366,170	\$2,114,306	\$4,251,865	\$6,366,171	\$0	\$0	\$6,366,171	\$6,366,171	\$0	\$0
4 Olympic High Addition/Renovation	\$8,964,000	\$8,947,310	\$2,002,694	\$6,944,615	\$8,947,310	\$0	\$0	\$8,947,310	\$8,947,310	\$0	\$0
5 South Mecklenburg High Addition	\$18,360,000	\$16,307,355	\$2,922,282	\$13,385,073	\$16,307,355	\$0	\$0	\$16,307,355	\$16,307,355	\$0	\$0
6 Charlotte East Language Academy (FKA -New Lang	\$30,376,000	\$31,456,414	\$5,740,242	\$25,692,685	\$31,432,927	\$0	\$23,487	\$31,387,929	\$31,387,929	\$68,485	\$0
7 Rea Farms STEAM Academy	\$31,376,000	\$40,476,000	\$9,134,265	\$30,214,465	\$39,348,729	\$52,310	\$1,074,961	\$38,112,174	\$38,153,881	\$2,322,119	\$41,706
8 Renaissance West STEAM Academy (FKA New Pre-	\$30,376,000	\$31,740,150	\$5,667,328	\$26,072,822	\$31,740,150	\$0	\$0	\$31,698,952	\$31,698,952	\$41,199	\$0
<b>Total Response to Enrollment Growth</b>	<b>\$160,892,000</b>	<b>\$157,352,267</b>	<b>\$32,158,295</b>	<b>\$124,013,576</b>	<b>\$156,171,871</b>	<b>\$52,310</b>	<b>\$1,128,087</b>	<b>\$154,849,119</b>	<b>\$154,890,825</b>	<b>\$2,461,442</b>	<b>\$41,706</b>
<b><u>C. CONTINGENCY</u></b>											
	\$0	\$0	\$0	\$0	\$0	\$0	\$0	\$0	\$0	\$0	\$0
<b>Total Contingency</b>	<b>\$0</b>	<b>\$0</b>	<b>\$0</b>	<b>\$0</b>	<b>\$0</b>	<b>\$0</b>	<b>\$0</b>	<b>\$0</b>	<b>\$0</b>	<b>\$0</b>	<b>\$0</b>
<b>TOTAL LOCAL BOND PROGRAM</b>	<b>\$295,168,000</b>	<b>\$301,699,771</b>	<b>\$65,327,954</b>	<b>\$224,096,698</b>	<b>\$289,424,652</b>	<b>\$52,310</b>	<b>\$12,222,809</b>	<b>\$287,961,710</b>	<b>\$288,006,030</b>	<b>\$13,693,740</b>	<b>\$44,320</b>

Original project estimated costs approved by the Board Of Education on July 23, 2013 and approved by the voters of Mecklenburg County on November 5, 2013.

Note: Mecklenburg County's appropriated interest from COPS to increase funding for the 2013 Bond Program.

**CHARLOTTE-MECKLENBURG BOARD OF EDUCATION**  
**2017 BOND SERIES-CAPITAL IMPROVEMENT PROGRAM**  
**BUDGET STATUS REPORT**

	Original Project Budget	Current Project Budget	Committed Amount	Approved Change Orders	Total Committed	Pending Commitments	To Be Committed	Prev Paid To Date	Paid To Date	Balance To Complete	Monthly Expenditure
	(A)	(B)	(C)	(D)	(E)=(C+D)	(F)	(G)=(B-E-F)	(H)	(I)	(J)=(B-I)	(K)=(I-H)
<b><u>A. REPLACEMENT &amp; RENOVATIONS</u></b>											
1 Briarwood Elementary *	\$29,091,619	\$31,962,730	\$4,880,735	\$26,609,642	\$31,490,376	\$59,246	\$413,108	\$15,871,744	\$17,990,582	\$13,972,148	\$2,118,838
2 Bruns Academy Replacement	\$34,207,808	\$39,784,927	\$1,433,024	\$218,050	\$1,651,074	\$0	\$38,133,853	\$0	\$0	\$39,784,927	\$0
3 Career & Technology Education Upgrades	\$10,101,734	\$10,159,765	\$2,241,225	\$15,671	\$2,256,896	\$0	\$7,902,869	\$1,060,158	\$1,133,375	\$9,026,390	\$73,217
4 Collinswood K-8 *	\$44,172,540	\$42,272,540	\$5,010,866	\$36,789,134	\$41,800,000	\$0	\$472,540	\$41,324,289	\$41,368,848	\$903,692	\$44,560
5 East Mecklenburg HS	\$12,771,594	\$15,058,594	\$1,782,855	\$11,301,998	\$13,084,853	\$0	\$1,973,741	\$828,007	\$871,296	\$14,187,298	\$43,290
6 Garinger HS	\$13,936,979	\$14,486,979	\$961,475	(\$70,000)	\$891,475	\$0	\$13,595,504	\$45,125	\$46,168	\$14,440,811	\$1,042
7 Harding University High *	\$18,330,263	\$14,530,263	\$2,048,751	\$11,712,323	\$13,761,074	\$10,750	\$758,439	\$13,145,197	\$13,156,028	\$1,374,235	\$10,831
8 Charlotte-Mecklenburg Academy (FKA -EC Specialty	\$18,957,960	\$18,079,506	\$2,175,504	\$15,790,598	\$17,966,102	\$2,665	\$110,739	\$17,699,220	\$17,699,220	\$380,286	\$0
9 Lansdowne Elementary	\$29,391,270	\$37,128,834	\$4,115,553	\$336,830	\$4,452,383	\$28,063,691	\$4,612,760	\$2,061,943	\$2,588,586	\$34,540,248	\$526,644
10 Lincoln Heights Elementary	\$3,740,478	\$4,588,675	\$577,649	\$26,774	\$604,423	\$0	\$3,984,252	\$383,738	\$383,738	\$4,204,937	\$0
11 Montclair Elementary Replacement *	\$28,559,390	\$28,559,390	\$2,439,368	\$26,056,957	\$28,496,324	\$14,400	\$48,666	\$26,593,127	\$26,922,070	\$1,637,320	\$328,943
12 Mountain Island k-8	\$9,218,439	\$10,488,400	\$1,074,565	\$0	\$1,074,565	\$0	\$9,413,835	\$0	\$0	\$10,488,400	\$0
13 Northwest School of the Arts	\$17,632,202	\$20,467,000	\$731,736	\$117,644	\$849,380	\$0	\$19,617,620	\$0	\$0	\$20,467,000	\$0
14 Shamrock Gardens Elementary *	\$29,890,351	\$35,358,351	\$3,663,225	\$26,053,763	\$29,716,988	\$25,346	\$5,616,017	\$3,900,699	\$4,396,514	\$30,961,837	\$495,814
15 Sharon Elementary	\$7,706,528	\$9,475,862	\$1,457,974	\$7,631,611	\$9,089,585	\$34,856	\$351,421	\$5,881,142	\$7,013,334	\$2,462,528	\$1,132,191
16 South Mecklenburg HS	\$13,352,143	\$15,622,927	\$554,114	\$94,238	\$648,352	\$0	\$14,974,575	\$0	\$0	\$15,622,927	\$0
17 E.E. Waddell Magnet HS	\$4,571,709	\$5,137,367	\$341,726	\$0	\$341,726	\$0	\$4,795,641	\$575	\$5,750	\$5,131,617	\$5,175
18 West Charlotte HS Replacement	\$109,977,166	\$109,977,166	\$11,847,868	\$88,163,139	\$100,011,007	\$152,000	\$9,814,159	\$36,566,963	\$39,513,723	\$70,463,443	\$2,946,760
19 West Mecklenburg HS	\$11,065,440	\$10,850,902	\$1,645,432	\$8,756,389	\$10,401,820	\$37,450	\$411,632	\$4,930,870	\$6,091,121	\$4,759,781	\$1,160,251
20 John Taylor Williams	\$13,964,339	\$15,732,600	\$704,520	\$0	\$704,520	\$0	\$15,028,080	\$0	\$0	\$15,732,600	\$0
<b>Total Replacement &amp; Renovations</b>	<b>\$460,639,952</b>	<b>\$489,722,778</b>	<b>\$49,688,163</b>	<b>\$259,604,760</b>	<b>\$309,292,923</b>	<b>\$28,400,404</b>	<b>\$152,029,450</b>	<b>\$170,292,796</b>	<b>\$179,180,353</b>	<b>\$310,542,425</b>	<b>\$8,887,557</b>
<b><u>B. RESPONSE TO ENROLLMENT GROWTH</u></b>											
1 South Academy of International Languages	\$45,359,367	\$42,959,367	\$6,140,546	\$35,673,741	\$41,814,286	\$153,388	\$991,693	\$34,638,377	\$35,645,797	\$7,313,570	\$1,007,420
2 New K-8 North Language Immersion *	\$45,359,367	\$43,359,367	\$6,299,390	\$35,810,738	\$42,110,129	\$11,261	\$1,237,977	\$35,019,057	\$36,489,796	\$6,869,571	\$1,470,739
3 New Elementary School - Nations Ford/Sterling/Steel	\$29,173,829	\$31,572,550	\$6,852,694	\$24,395,881	\$31,248,575	\$91,753	\$232,222	\$17,776,379	\$18,994,790	\$12,577,760	\$1,218,411
4 New Elementary School - Bain/Lebanon Relief	\$29,988,332	\$31,455,951	\$3,293,608	\$0	\$3,293,608	\$0	\$28,162,343	\$1,148,546	\$1,544,225	\$29,911,726	\$395,679
5 New Elementary School - Windsor Park Relief *	\$30,422,230	\$37,197,022	\$3,279,093	\$177,404	\$3,456,497	\$0	\$33,740,525	\$11,000	\$98,321	\$37,098,701	\$87,321
6 New Elementary School - Elon/Hawk Ridge Relief *	\$30,426,712	\$43,476,676	\$13,954,737	\$47,300	\$14,002,037	\$0	\$29,474,639	\$10,904,988	\$10,918,848	\$32,557,828	\$13,860
7 New Elementary School - Hidden Valley Relief	\$30,518,345	\$34,697,022	\$3,924,008	\$179,875	\$4,103,883	\$0	\$30,593,139	\$1,020,708	\$1,129,782	\$33,567,240	\$109,074
8 New High School - Olympic Relief	\$109,908,793	\$109,908,793	\$11,309,357	\$91,828,509	\$103,137,866	\$128,094	\$6,642,833	\$36,018,290	\$40,980,569	\$68,928,224	\$4,962,279
9 New High School - South Meck/Ardrey Kell Relief *	\$110,287,621	\$154,930,460	\$10,847,888	\$711,379	\$11,559,267	\$0	\$143,371,193	\$1,689,317	\$2,068,820	\$152,861,641	\$379,503
<b>Total Response to Enrollment Growth</b>	<b>\$461,444,596</b>	<b>\$529,557,208</b>	<b>\$65,901,321</b>	<b>\$188,824,827</b>	<b>\$254,726,148</b>	<b>\$384,496</b>	<b>\$274,446,565</b>	<b>\$138,226,661</b>	<b>\$147,870,946</b>	<b>\$381,686,261</b>	<b>\$9,644,285</b>
<b><u>C. CONTINGENCY</u></b>											
	\$0	\$0	\$0	\$0	\$0	\$0	\$0	\$0	\$0	\$0	\$0
<b>Total Contingency</b>	<b>\$0</b>	<b>\$0</b>	<b>\$0</b>	<b>\$0</b>	<b>\$0</b>	<b>\$0</b>	<b>\$0</b>	<b>\$0</b>	<b>\$0</b>	<b>\$0</b>	<b>\$0</b>



**CHARLOTTE-MECKLENBURG BOARD OF EDUCATION**  
**2017 BOND SERIES-CAPITAL IMPROVEMENT PROGRAM**  
**BUDGET STATUS REPORT**

	Original Project Budget	Current Project Budget	Committed Amount	Approved Change Orders	Total Committed	Pending Commitments	To Be Committed	Prev Paid To Date	Paid To Date	Balance To Complete	Monthly Expenditure
	(A)	(B)	(C)	(D)	(E)=C+D	(F)	(G)=(B-E-F)	(H)	(I)	(J)=(B-I)	(K)=(I-H)
<b>TOTAL LOCAL BOND PROGRAM</b>	<b>\$922,084,548</b>	<b>\$1,019,279,985</b>	<b>\$115,589,484</b>	<b>\$448,429,587</b>	<b>\$564,019,071</b>	<b>\$28,784,900</b>	<b>\$426,476,015</b>	<b>\$308,519,458</b>	<b>\$327,051,299</b>	<b>\$692,228,686</b>	<b>\$18,531,842</b>

Original project estimated costs approved by the Board Of Education on July 25, 2017 approved by the voters of Mecklenburg County on November 7, 2017.

\*Project included in \$33.2M early funding approved by Board Of Education on August 9, 2016 and Mecklenburg Board of County Commissioners on September 6, 2016. On February 19, 2019 an additional \$8M was approved for New Elementary School - Elon/Hawk Ridge Relief site.

\*Current Budget includes an additional \$89.2M to fund increase land and construction costs. The additional funds were approved by the Board of County Commissioners on June 16, 2020.

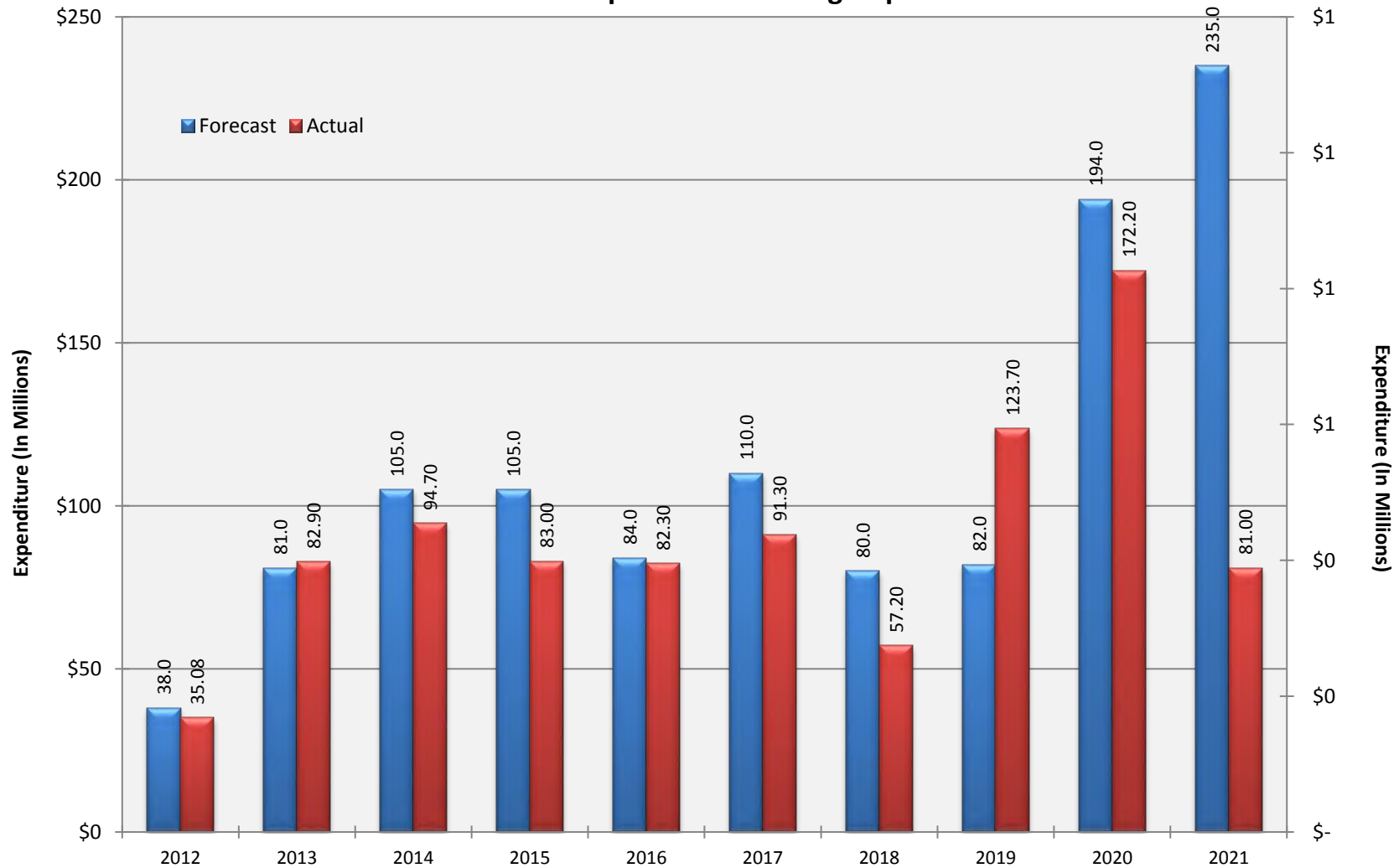
**Charlotte-Mecklenburg Board of Education**  
**Approved Construction or Repair Change Orders\***  
**Reporting Period: April 2021**

<b>Funding Source</b>	<b>Project Name</b>	<b>Contractor</b>	<b>Description</b>	<b>Change Order Amount</b>	<b>Revised Contract Value</b>
2017 Bond	West Charlotte High School (17)	RODGERS-HOLT BROTHERS, a Joint Venture	Security Transaction Window, Delete 30 Amp Outlet in Data Rooms, Remove OH Doors from Assa Abloy, Add Sensor Operated Faucets, Tie In Football Field Water Cannon, Replace Hubbell Back Boxes at Teaching Wall, Add HVAC PTAC Unit at Athletic Press Box , Fire & Water Service Connections at Field House	\$0.00	\$88,558,070.00
2017 Bond	New K-8 School (North) (17)	New Atlantic Contracting, Inc.	NCDOT Hambright Road Utility Moves, Add Circuit to LED Monument Sign, Elevator Panel Change, Temporary Power, Remove Unnecessary Sprinkler Fittings in Data Rooms, Credit for Plywood & Add Cable Tray Ladder Rack, Temporary Curb Allowance, Data & Electrical Changes at A187, Add Spandrel Glass at Media Center, Cut Pour Stop for Expansion Joint Cover	\$73,427.95	\$35,531,091.58
2017 Bond	New K-8 School (North) (17)	New Atlantic Contracting, Inc.	Asphalt Repair & Replace, Johnsonite Resilient Stair Tread Nosing, Dishwashers for Science Labs, Media Center Projection Screen Credit, Elevator Shaft Light & Receptacle, Seating Revision, Add Macropoxy Credit for Semco	\$47,823.00	\$35,578,914.58

\* Not previously presented to the Board of Education for Approval (less than \$90,000)

# 10 YEAR EXPENDITURE SUMMARY

Forecast Expenditure versus  
Actual Expenditures through April 2021





# GLOSSARY

# Glossary

---

- **Project Management** – This section includes updates from our project managers and describes the currently active construction projects. This includes from Board of Education award thru final completion.
- **Design and Bidding** – This section contains updates from our design managers on the projects currently in the design phase. This phase from design award to Board of Education award of construction.
- **Controls** – Section includes misc. updates from controls group including expenditures, related Board of Education awards during the reporting period, cash flow information. This section covers all projects from approved bond through final expenditures and bond close with the county.
- **MWSBE** – Contains updates from the MWSBE Director and team, including current activity and summaries of the participation by MWSBE providers on our program.
- **Bond Progress Summary** – Provides a summary of bond financials including bond value, committed/pending amounts, paid to date, expended this month.
- **Project Procurement Dates** - Next 90 Days major project bid activity.
- **Mobile Swing Space Utilization** – Includes a summary of program related swing space currently in use and the schedule of use.
- **Bond Summary Schedule** – Current program summary schedule including planned design, construction and FF&E. These activities are fed from detailed schedules and are fine-tuned as project information is available.
- **Project Contractor Teams**; Provides summary of turnover dates for completed/closed projects since 2010 including architects/designers and contractors.
- **School Site Location Maps** – General location of bond projects (2017) by type.
- **Project Status Report** – This section of the report provides a summary of the bond project scope, current estimate (all sources), planned occupancy/actual occupancy date. It also provides a current status of the design phase, construction progress and a brief update. The report currently includes 2013 and 2017 bond projects that have or will be completed after to August 2016.
- **MWSBE Participation Report** – The MWSBE report provides a summary of the participation on the 2013 & 2017 Bond funded projects.
- **Project Progress Photos** – Includes photos of active construction projects.
- **Budget Summary Reports** – These reports are by funding source and summarize financial activity to date on the projects. This includes original and current project estimates, committed values, amounts paid to date, balances and monthly expenditures.
- **Change Orders < \$90,000** – This month's approved construction or repair change orders < \$90,000.
- **Expenditure Summary** – Provides a summary of Bond Expenditures by calendar year.