

Capital Improvement Program

Monthly Bond Report March 2021



New High School Olympic Relief



CAPITAL PROGRAM SERVICES Capital Improvement Program

MARCH 2021 **MONTHLY BOND REPORT**

PROGRAM OVERVIEW

- Project Management
- Design and Bidding
- Controls
- MWSBE
- Bond Progress Summary
- Project Procurement - Next 90 Days
- Swing Space Utilization
- Bond Summary Schedule
- Project Contractor Teams; Projects in Design/Construction and Substantially Completed/Closed
- School Site Location Maps
 - Elementary Schools
 - Middle Schools
 - High Schools & Specialty Schools

PROJECT STATUS REPORT

MWSBE PARTICIPATION REPORT

PROJECT PROGRESS PHOTOS

PROJECT CONTROLS

- Budget Summary Reports
 - 2013 Bond Series
 - 2017 Bond Series
- Change Orders < \$90,000
- Expenditure Summary

GLOSSARY

PROGRAM OVERVIEW

PROJECT MANAGEMENT

The following is a summary of the activity on the bond funded projects in construction during the month of March.

The construction manager for the **Briarwood Elementary Replacement School** continued installation of the storefront and window systems which enclosed the building in areas needed to allow other activities to continue. Utilizing temporary air, the finishing of drywall, painting and ceiling grid continued in the second floor classroom wing and administration wing. The build out of the main mechanical and electrical rooms progressed in preparation to bring the mechanical systems online in April. The mason is wrapping the building with brick veneer in multiple areas. Asphalt paving was installed at the temporary bus lot and kitchen dock. The 45-classroom replacement school is scheduled to be occupied in August 2021. Upon completion, demolition and remaining site work will commence and be completed in 2022.

The construction manager for **East Mecklenburg High School** has been issued notice to proceed. The new three-story classroom wing will be erected beside the existing bus parking lot. The grading contractor will start with erosion control device installation. The new classroom wing is scheduled for occupancy in August 2022.

The **Lansdowne Elementary School** perimeter enclosure fence is installed and construction entrance is in place. The site selective demolition is ongoing to accommodate the new building. The temporary bus lot is now being utilized by students and staff. Occupancy of the replacement school is scheduled for August 2022. Upon completion of the new building, demolition and remaining site work will commence and will be completed in 2023.

The construction manager for the **Montclair Elementary School** completed the removal of the excess soils. The new bus lot asphalt and striping was completed and preparations were made to install the bus lot sidewalks and canopy. The site fencing was also reconfigured in preparation of turning the new bus lot over to the school at the beginning of April. This will allow the old bus lot to be removed and the grass play space to be installed. The playgrounds were excavated and the perimeter concrete was poured. The new 45-classroom elementary school building has been occupied. The remaining site work is being completed.

The **New Elementary School (Nations, Sterling, Steele Creek Relief)** project is progressing well, many activities continued throughout the facility with a focus on bringing the permanent HVAC systems online to remove the temporary. Drywall installation moved into the administration space and metal stud soffits were installed in the multipurpose room. MEP continued with above ceiling and wall rough-ins. The mason has almost completed the exterior brick veneer and is working on the interior masonry. The new 45-classroom relief elementary school is scheduled to be occupied August of 2021.

The construction manager for the **New High School Olympic Relief** worked throughout the site. Structural steel and load bearing masonry continued. The exterior metal studs followed the structural steel along with the exterior sheathing. The roofer progressed providing more areas for MEP contractors to focus on above ceiling rough-ins. An additional mechanical piping crew was brought on to focus on the main mechanical room. The site walls continued and the mason began the stadium outbuildings. The site work contractor continued their focus on parking lots, prepped the bleacher concrete slabs and erosion control. The 100-classroom relief high school is scheduled to be occupied in August 2022.

The construction manager for the **New K-8 Language Immersion North** project is working through final inspections by Mecklenburg County Building Standards. The building finishes are now complete and final clean has been performed. The architect and design engineers have completed their punch list and sub-contractors are working toward completion. The team is awaiting the school naming and mascot approval; this will allow school signage and gym flooring to be finalized. The landscaper has now completed site stabilization and trees and shrubs are nearing completion. The Hambright Road improvements will commence once the underground utility contractors relocate

existing lines. The existing track surface replacement will commence in April. The project is scheduled to be occupied August 2021.

The **Shamrock Gardens Elementary School** construction manager started the aggregate pier installation below the foundations. The site work contractor continued to grade the site specifically to obtain sub grade of the building pads. Erosion control measures continued to be installed throughout the project site. The new 45-classroom replacement elementary school is scheduled to be occupied August 2022.

The construction manager for the **Sharon Elementary School Building Addition** has achieved building dry-in. The roof downspouts are now installed and final grading around the building for new hardscapes are nearing completion. The above ceiling inspections are complete allowing ceiling tiles to be installed. The classroom casework is also complete. The bathrooms have hard tile installed and partitions will follow. The cafeteria expansion is closed in and ceiling grid is installed. Occupancy of the 16-classroom addition and cafeteria expansion is scheduled for August 2021.

The construction manager for the **South Academy of International Languages** (*FNA New K-8 Language Immersion South*) obtained substantial completion on the project. The fire alarm, security, intercom systems were brought online for monitoring. Final inspections occurred and occupancy has been approved by the Fire Marshal and Building Inspector. The architect reviewed the building preparing and issued the punch-list for final completion. The construction manager continued with final cleaning and closeout activities. The project is scheduled to be occupied August 2021.

The **West Charlotte High School** mechanical, electrical and plumbing (MEP) contractors worked on above ceiling and interior wall rough-ins. The roof is progressing from south to north and the steel erector is finalizing the structure. The exterior of the building is continues to progress with spray foam insulation and air barrier. Some areas have also started the brick veneer. The roofs are now on the athletic buildings by the stadium allowing the MEP trades to progress. The site contractor continues to install below grade piping and maintain erosion control devices. The project is scheduled to be occupied August 2022. Once the new school is occupied the existing school will be demolished and final site work will take place with final project completion in August 2023.

The **West Mecklenburg High School Gym** construction manager is nearing dry-in for the new gym. Brick veneer is nearly complete and windows have been installed. The above ceiling rough-ins continue throughout the facility. The gym floor slab is being prepared for the new wood floor. The bathrooms are ready to start the hard tile installations. The roof top HVAC units are set and permanent power will be energized in early April. Occupancy of the new gymnasium is scheduled for August 2021 the existing gym will then be used as an auxiliary gym.

DESIGN AND BIDDING

The following is a summary of the activity on the bond funded projects in design and bidding phase during the month of March.

The **CTE projects** at **Harding**, **South Mecklenburg** and **Olympic** have completed the LUESA building permit review process. The construction manager continues to progress with bid phase activities for the three projects which are scheduled for board approval in May 2021. The Harding project consist of renovations to existing classrooms in the auditorium building to develop a suite of technology classrooms. The project at Olympic includes electrical up fits to the existing carpentry lab which expands the curriculum to include demonstration learning booths for plumbing and electrical trades. The project at South Mecklenburg consists of renovating the old kitchen area into a culinary arts lab and classroom. Occupancy for these projects is scheduled for January 2022.

The **Garinger High School Addition/Renovation** and **CTE** project has received City Engineering and LUESA approval for the building permit. NC Department of Public Instruction continues to progress with its approval. The construction manager has developed their scope of work criteria and final details of the bid manual. The bid phase will begin in late April. The project's scope consists of a 2-story building with 16 classrooms and modifications to the existing 300 building. The new building is scheduled to be completed for occupancy in August 2022.

The **New Elementary School (Bain, Lebanon, Piney Grove Relief)** construction manager received bids in March and continues preparation of the GMP. Work is scheduled to begin in May and occupancy is scheduled for August 2022. The project consists of a 45-classroom school located next to the existing Mint Hill Middle School.

The **New Elementary School (Elon, Hawk Ridge, Polo Relief)** architect continues to progress in the pre-schematic design phase with an April 2021 submittal milestone. This new 45-classroom school will be located across from the Ardrey Kell High School and is scheduled for occupancy in August 2023.

The **New Elementary School (Hidden Valley, JW Grier, Newell Relief)** architect has completed the pre-schematic design phase and been approved to proceed into the schematic design phase. This new 45-classroom school will be located next to Northridge Middle School and is scheduled for occupancy in August 2023.

The **New Elementary School (Windsor, Winterfield, Idlewild Relief)** architect completed their pre-schematic design submission. Due diligence activities for site acquisition are pending. The new 45-classroom school is scheduled for occupancy in August 2023.

The **New High School (South, Ardrey Relief)** architect continues to progress into the design development phase and is scheduled for completion in late April 2021. The project consists of a new 100-classroom high school athletic play fields and stadium. Due diligence and land acquisition activities continue to progress.

CONTROLS

Expenditures for March were \$19M. This brings our fiscal year to date total to \$161.4M against the 2021 fiscal year cash flow projection of \$275M. The Controls team is finalizing the closeout five 2013 Bond projects and one 2017 Bond project. The Controls team continues the reconciliation and closeout of completed 2013 and 2017 bond projects. Available funding is being accumulated to be used for future capital needs.

Board of Education approval was received on March 23, 2021 for the construction phase for the East Mecklenburg HS New Classroom Building Addition. Additionally, approval was received for required easements, covenants and/or right of ways related to Charlotte-Mecklenburg Schools' construction projects through April 2022. This approval was granted to facilitate timely processing of documents that may otherwise cause design, operational or construction delays.

The Controls team continues to submit notices of potential changes at school sites so senior staff can adequately evaluate any issues. Additionally, the Controls team continues the processing of contracts, invoices, preparing notices of potential change, change orders, pay applications and check requests for projects under construction. Captured construction cost data is used to prepare financial reports such as detailed cost reports, budget summaries, reconciliation to CMS books, revisions to and updated cash flows and complete special financial requests by CMS and Mecklenburg County. This process, along with data compilation and management, allows senior staff to provide the proper guidance/direction and accurate information to the program stakeholders.

MWSBE

As of March 2021 the overall MWSBE utilization percentage related to design and construction of the 2013 and 2017 bond projects is 45.44% which includes 15.93% participation by minority contractors, 28.54 by women contractors and .96% participation by small business contractors. This accounts for more than \$353 million spent on the utilization of Minority, Women and Small Business Contractors.

The Diversity & Inclusion Office of Charlotte-Mecklenburg Schools continued to conduct several individual virtual orientations with new MWSBE contractors and prime contractors. In addition, team members also attended/hosted the following outreach sessions/pre-bid meetings and/or workforce development opportunities:

- Garinger High School addition virtual outreach hosted by Balfour Beatty Construction
- United Minority Contractors of North Carolina Industry Day
- Served as a panelist for City of Charlotte AMP Up! entrepreneurial program graduates growth plan presentations
- NC Governor Cooper Exploring Economics update

Good Faith Efforts:

- Reviewed Lebanon/Bain/Piney Grove relief elementary MWSBE participation documentation
- Reviewed CTE project MWSBE participation documentation

Over the next month, team members will continue to work with contractors interested in bidding on the upcoming school projects utilizing various virtual tools to communicate. Contractors are encouraged to review bid advertisements in Charlotte Observer and register as a vendor on the North Carolina Interactive Purchasing System for notification of the various opportunities.

BOND PROGRESS SUMMARY As of March 2021

Funding Source and Value		Amount Committed/Pending	Amount Paid to Date	Amount Expended This Period
'13 Bond	\$301,699,770	\$289,447,032	\$287,961,710	\$27,748
'17 Bond	\$1,019,279,985	\$593,035,194	\$308,519,458	\$18,985,693
Grand Total	\$1,320,979,755	\$882,482,226	\$596,481,168	\$19,013,441

UPCOMING MAJOR CONSTRUCTION PROCUREMENT DATES *Three Month Look Ahead*

<u>School Name</u>	<u>Bid Dates*</u>
New ES (Bain, Lebanon, Piney Grove Relief) <i>(Bids managed by Metcon)</i>	March 2021
CTE projects at Harding, South Mecklenburg and Olympic <i>(Bids managed by Branch/Brownstone)</i>	March 2021
Garinger High School Addition/Renovation and CTE <i>(Bids managed by Balfour Beatty)</i>	May 2021

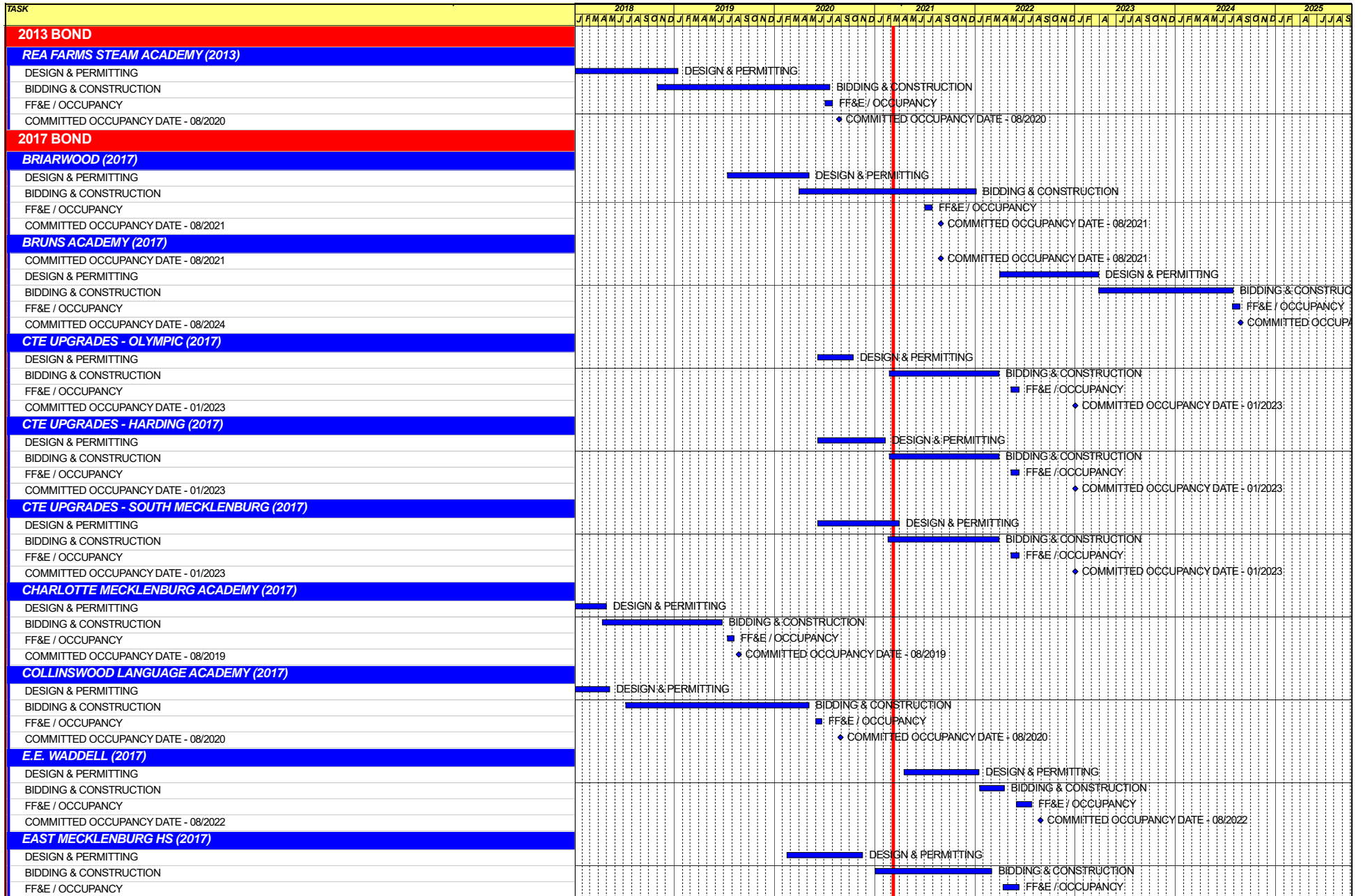
** NOTE: Work In Progress...Dates Subject to Change.*

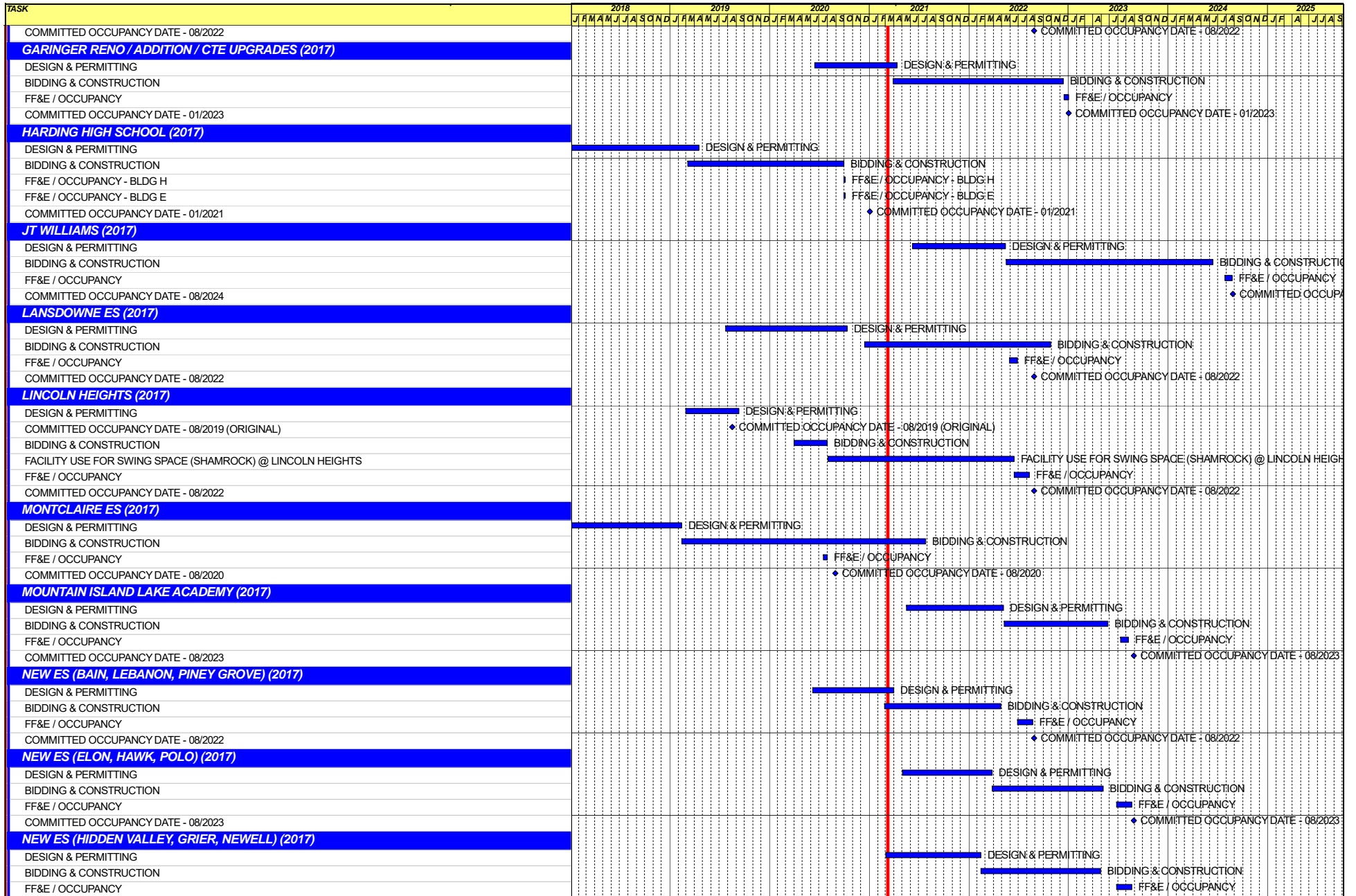
SWING SPACE UTILIZATION

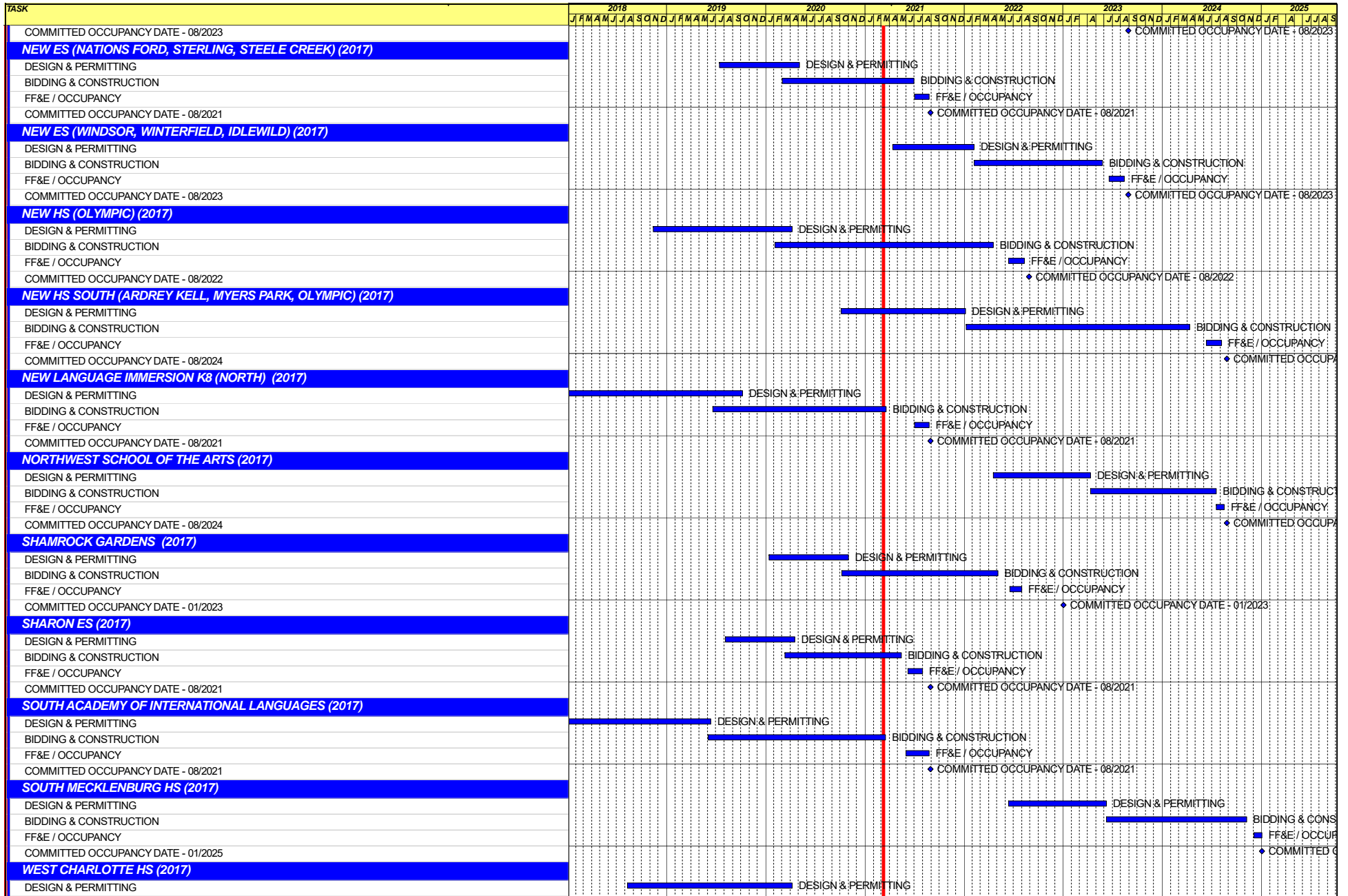
Creating a temporary space for students and staff to occupy during construction on a school’s campus has proven to be beneficial to the project’s schedule and cost and overall safety and efficiency of school operations. When the renovation or expansion of a facility is performed and the facility must remain functionally operational, there are benefits to the owner in using swing space.

We have successfully utilized both onsite and offsite swings. The most desirable swings are “offsite” ones. Onsite swing using mobiles or modulars, likewise has been successfully used. The following is a summary of current swing options planned or in use.

<u>School</u>	<u>No. of Mobiles/Relocation Site</u>	<u>Status (From – To)</u>
Shamrock	Lincoln Heights	August 2020 – August 2022







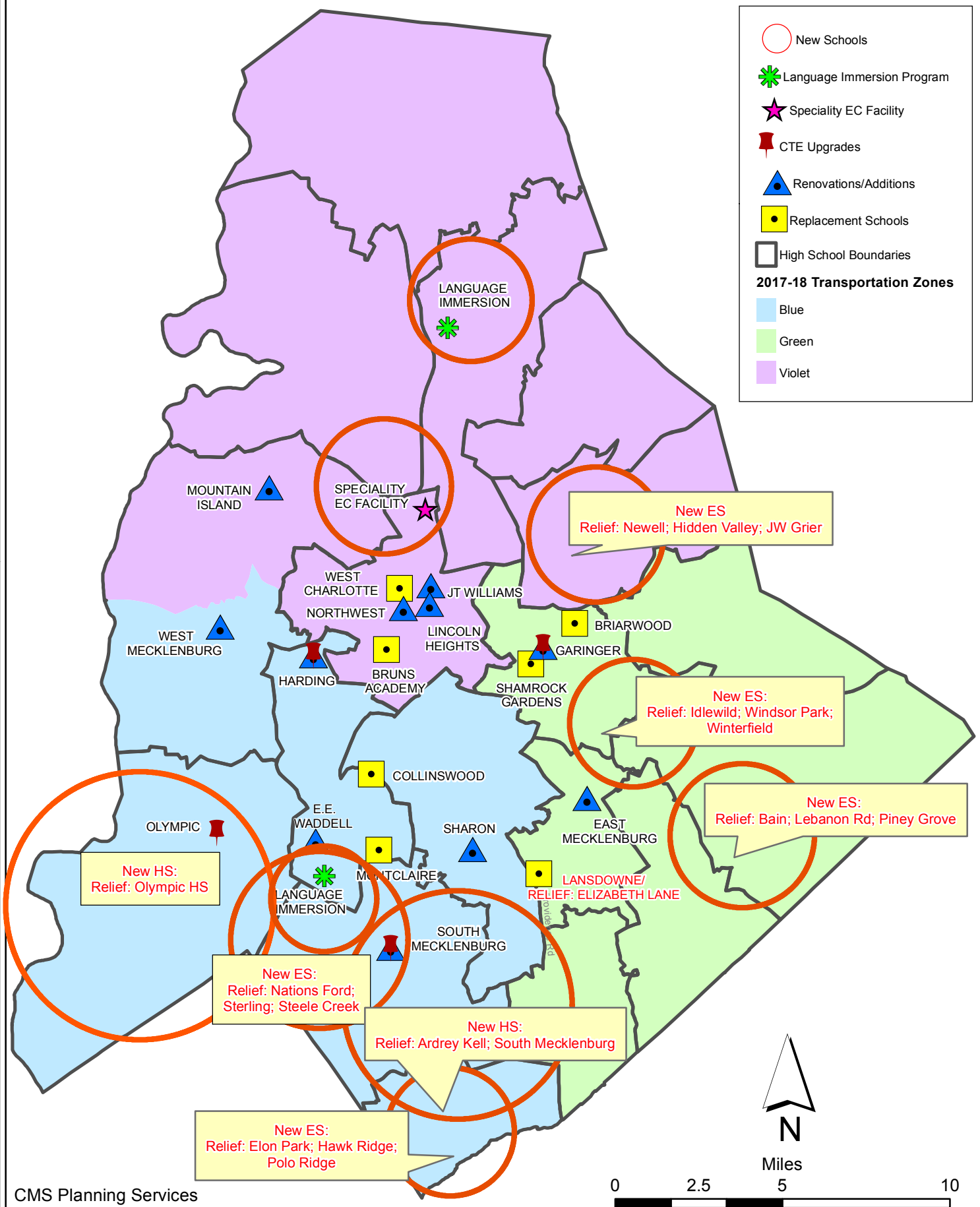
Capital Improvements Program
Projects in Design or Under Construction

School	Architect	General Contractor/CM
Projects In Design		
CTE (Harding, Olympic, South) (17)	MPS	Branch Brownstone
East Mecklenburg High School (17)	Morris Berg	Turner Construction
Garinger Addition/Renovation & CTE (17)	LS3P	Balfour Beatty
Lincoln Heights Repurpose (17)	Neighboring Concepts	TBD
New ES (Bain, Lebanon Rd, Piney Grove) (17)	FWA	Metcon
New HS (South, Ardrey) (17)	Ratio	Messer
New ES Hidden Valley, JW Grier, Newell (17)	ADW	Edifice, Inc.
Projects in Bid/Award/Construction Phase		
Briarwood Elementary School Replacement (17)	ADW	New Atlantic
K-8 Language Immersion North (17)	ADW	New Atlantic
Lansdowne Elementary School Replacement (17)	Perkins Eastman	Edifice, Inc.
Montclair Elementary School (17)	WHN	Messer
New ES (Nations Ford, Sterling, Steele Creek) (17)	FWA	Metcon
New High School (Olympic Relief) (17)	Little Diversified	Edifice, Inc.
Shamrock Gardens Elementary School Replacement (17)	Little Diversified	Rodgers-Holt Brothers
Sharon Elementary School (17)	Clark Nexsen	Samet
South Academy of International Languages (17)	FWA	Messer
West Charlotte High School (17)	LS3P	Rodgers-Holt Brothers
West Mecklenburg Gym (17)	Moseley	Barnhill/DA Everett

Capital Improvements Program
Projects Substantially Completed/Closed *

School	Turnover Year	Architect	General Contractor
Collinswood Language Academy (17)	Aug-20	Perkins Eastman	Turner Construction
Harding High School Renovation (17)	Aug-20	SFLA	Barnhill Contracting
Rea Farms STEAM Academy (13)	Aug-20	Little Diversified	Balfour Beatty
Ashley Park K-8 Conversion (13)	Aug-19	ADW	Turner Construction
Druid Hills K-8 Conversion (13)	Aug-19	ADW	Edifice, Inc.
Selwyn Elementary (13)	Aug-19	Clark Nexsen	Balfour Beatty
Charlotte Mecklenburg Academy (17)	Aug-19	KSQ	Edifice, Inc.
Davidson K-8 (13)	Aug-19	Little Diversified	Gilbane
CTE - North Mecklenburg High (13)	Aug-19	LS3P	Shiel Sexton
CTE - Garinger (13)	Mar-19	LS3P	Hostetter & Son
CTE - Independence (13)	Mar-19	LS3P	D.E. Brown
CTE - West Mecklenburg (13)	Mar-19	LS3P	Hostetter & Son
Charlotte East Language Academy (13)	Aug-18	Morris Berg	Edifice, Inc
Myers Park High School Phase 3 (13)	Aug-18	Boomerang Design	BE&K
Northridge Middle (13)	Aug-18	Morris Berg	Barnhill Contracting
Myers Park High Bldg 2 (13)	Feb-18	Boomerang Design	BE&K
East Mecklenburg High Addition (13)	Jan-18	Bergman (fna Gantt Huberman)	Edifice, Inc.
J.M. Alexander Middle (13)	Aug-17	FWA Group	Balfour Beatty
Northwest School of the Arts Renovation (13)	Aug-17	Moseley	Turner Construction
Renaissance West STEAM Academy (13)	Aug-17	Little Diversified	Rodgers Construction
South Mecklenburg High Addition (13)	Jul-17	SFLA	Barnhill Contracting
Myers Park High Bldg 1 (13)	Sep-16	Boomerang	KBR
Statesville Road Elementary (13)	Aug-16	ADW	JE Dunn
Nations Ford Elementary (13)	Aug-16	Wash Hatem Nelson	Messer Construction
Olympic High Addition (13)	Aug-16	McMillan, Pazdan, Smith	Turner Construction
Lawrence Orr Elementary (07)	Aug-15	Cort Architectural Group	DH Griffin/Metcon
Parkside Elementary (07)	Aug-15	Wash Hatem Nelson	Clancy & Theys
Hawthorne High Renovations (07)	Aug-15	Morris-Berg	Balfour Beatty
Newell Elementary (07)	Aug-15	Perkins Eastman	New Atlantic Contracting
Ranson Middle (07)	Aug-15	Morris-Berg	Edifice, Inc.
Vance High	Jan-15	LS3P	Matthews Construction Co., Inc.
Garinger High - Renovations/Addition	Aug-14	Adams Group Architects	Turner Construction
Olympic High - Stadium	Aug-14	Site Solutions	Turner Construction
West Mecklenburg High - Stadium	Aug-14	Site Solutions	Turner Construction
Collinswood - Indoor Air Quality	Aug-14	PEA	The Bowers Group
Lansdowne - Indoor Air Quality	Aug-14	AeroRaq	Tyler 2
McKee Road - Indoor Air Quality	Aug-14	McCracken & Lopez	Godfrey Construction
Garinger High - Track & Field	Jul-14	Site Solutions	Turner Construction
Independence High - Gym	Jun-14	Shook Kelly	Shelco, Inc. (CM)
Palisades Park Elementary	May-14	Wash Hatem Nelson	Clancy & Theys
East Mecklenburg High Auditorium	Jan-14	Gantt Huberman Associates	Godfrey Construction Co., Inc.
Pineville Elementary	Aug-13	Cort Architectural Group	Beam Construction Co., Inc.
Bain Elementary	Aug-13	ADW	Edison Foard
Grand Oak Elementary	Aug-13	ADW	Matthews Construction Co., Inc.
McClintock Middle	Aug-13	FWA Group	Shelco, Inc.
Sedgefield Elementary Demolition	Oct-12	Cort Architectural Group	EHG, LLC
Alexander Graham Middle Gym Reno	Aug-12	MBAJ Architecure	Edison Foard
First Ward - Demolition & Bus lot	Aug-12	MBAJ Architecure	T.K. Browne
South Meck High Parking Lot Renovation	Aug-12	Little Diversified	Sorenson Gross
Cochrane Middle - Kitchen	Aug-11	MBAJ Architecure	Sorenson Gross
Hough High	Aug-10	Little Diversified	Rodgers Construction
Rocky River High	Aug-10	Little Diversified	Balfour Beatty

CMS Capital Improvement Plan 2017 Bond Projects



PROJECT STATUS REPORT



Monthly Project Status 2017 Bond Summary March 2021

Project	Current Project Estimate	Project Scope	** Occupy On	Design Phase	Construction Progress	Project Status
Briarwood Elementary School (17)	\$ 31,962,730	45-classroom replacement facility; replaces school built in 1956.	August 2021	Complete	53 %	The construction manager for the Briarwood Elementary Replacement School continued installation of the storefront and window systems which enclosed the building in areas needed to allow other activities to continue. Utilizing temporary air, the finishing of drywall, painting and ceiling grid continued in the second floor classroom wing and administration wing. The build out of the main mechanical and electrical rooms progressed in preparation to bring the mechanical systems online in April. The mason is wrapping the building with brick veneer in multiple areas. Asphalt paving was installed at the temporary bus lot and kitchen dock.
Bruns Academy (17)	\$ 39,784,927	New 45-classroom elementary school (K-5); replaces old school built in 1969.	August 2024	Not Started	0 %	This project is scheduled to start design Spring 2022.
Career and Technology Education (17)	\$ 10,159,765	Phase I CTE upgrades at Olympic, Harding, Garinger and South Mecklenburg.	January 2023	Construction Documents	0 %	The CTE projects at Harding, South Mecklenburg and Olympic have completed the LUESA building permit review process. The construction manager continues to progress with bid phase activities for the three projects which are scheduled for board approval in May 2021. The Harding project consist of renovations to existing classrooms in the auditorium building to develop a suite of technology classrooms. The project at Olympic includes electrical up fits to the existing carpentry lab which expands the curriculum to include demonstration learning booths for plumbing and electrical trades. The project at South Mecklenburg consists of renovating the old kitchen area into a culinary arts lab and classroom.

Monthly Project Status
2017 Bond March 2021

Project	Current Project Estimate	Project Scope	** Occupy On	Design Phase	Construction Progress	Project Status
Charlotte-Mecklenburg Academy (17)	\$ 18,079,506	New EC school located on the old Statesville Elementary School site.	August 2019	Complete	100 %	Project is complete.
Collinswood Language Academy (17)	\$ 42,272,540	New 63-classroom K-8 facility on the site of the Smith Family Center.	August 2020	Complete	100 %	Project is complete.
E.E. Waddell (17)	\$ 5,137,367	Repurpose current E.E. Waddell to reopen as a magnet high school.	August 2022	Pre-Design	0 %	Planning in preparation for design start in 2021.
East Mecklenburg High School (17)	\$ 15,058,594	This project will provide for the design, and construction of a new 30 classroom building.	August 2022	Complete	0 %	The construction manager for East Mecklenburg High School has been issued notice to proceed. The new three-story classroom wing will be erected beside the existing bus parking lot. The grading contractor will start with erosion control device installation.
Garinger High School (17)	\$ 14,486,979	Project includes the design and construction for renovations of 300 building and a new 16 classroom building.	January 2023	Complete	0 %	The Garinger High School Addition/Renovation and CTE project has received City Engineering and LUESA approval for the building permit. NC Department of Public Instruction continues to progress with its approval. The construction manager has developed their scope of work criteria and final details of the bid manual. The bid phase will begin in late April. The project's scope consists of a 2-story building with 16 classrooms and modifications to the existing 300 building.
Harding High School (17)	\$ 14,530,263	Renovation of the kitchen, cafeteria, existing gym (aux) and the addition of a new gym.	August 2020	Complete	99 %	Construction Manager has change items that will be completed summer 2021 and is finalizing financial reconciliation.
JT Williams (17)	\$ 15,732,600	Project includes building renovations to J.T. Williams Montessori magnet.	August 2024	Not Started	0 %	Design is scheduled to start summer of 2021.
Lansdowne Elementary School (17)	\$ 37,128,834	New 45-classroom school; replaces old school built in 1959 and relieve crowding at Elizabeth Lane ES.	August 2022	Complete	1 %	The Lansdowne Elementary School perimeter enclosure fence is installed and construction entrance is in place. The site selective demolition is ongoing to accommodate the new building. The temporary bus lot is now being utilized by students and staff.

Monthly Project Status
2017 Bond March 2021

Project	Current Project Estimate	Project Scope	** Occupy On	Design Phase	Construction Progress	Project Status
Lincoln Heights Elementary School (17)	\$ 4,588,675	Repurpose and reopen as magnet school.	August 2022	Construction Documents	0 %	Shamrock Gardens will be utilizing the Lincoln Heights Elementary building as swing space August 2020 - August 2022. Playgrounds were replaced and new digital signage was installed summer 2020.
Montclair Elementary School (17)	\$ 28,559,390	New 45-classroom replacement facility replacing school built in 1958.	August 2020	Complete	97 %	The construction manager for the Montclair Elementary School completed the removal of the excess soils. The new bus lot asphalt and striping was completed and preparations were made to install the bus lot sidewalks and canopy. The site fencing was also reconfigured in preparation of turning the new bus lot over to the school at the beginning of April. This will allow the old bus lot to be removed and the grass play space to be installed. The playgrounds were excavated and the perimeter concrete was poured.
Mountain Island Lake Academy (17)	\$ 10,488,400	K-8 Phase 2 - New gymnasium and specialty classrooms.	August 2023	Not Started	0 %	Project design to be initiated in the spring of 2021.
New Elementary School (Bain, Lebanon, Piney Grove) (17)	\$ 31,455,951	New 45-classroom elementary school; relieves crowding at Bain, Lebanon Road, Piney Grove.	August 2022	Complete	0 %	The New Elementary School (Bain, Lebanon, Piney Grove Relief) construction manager received bids in March and continues preparation of the GMP. Work is scheduled to begin in May and occupancy is scheduled for August 2022. The project consists of a 45-classroom school located next to the existing Mint Hill Middle School.
New Elementary School (Elon, Hawk Ridge, Polo Relief) (17)	\$ 43,476,676	New 45-classroom elementary school to relieve Elon, Hawk Ridge, Polo.	August 2023	Schematic	0 %	The New Elementary School (Elon, Hawk Ridge, Polo Relief) architect continues to progress in the pre-schematic design phase with an April 2021 submittal milestone.
New Elementary School (Hidden Valley, JW Grier, Newell) (17)	\$ 34,697,022	New 45-classroom elementary school; relieves overcrowding at Hidden Valley, J.W. Grier, Newell.	August 2023	Schematic	0 %	The New Elementary School (Hidden Valley, JW Grier, Newell Relief) architect has completed the pre-schematic design phase and been approved to proceed into the schematic design phase. This new 45-classroom school will be located next to Northridge Middle School.

Monthly Project Status
2017 Bond March 2021

Project	Current Project Estimate	Project Scope	** Occupy On	Design Phase	Construction Progress	Project Status
New Elementary School (Nations, Sterling, Steele Relief) (17)	\$ 31,572,550	New 45-classroom elementary school to relieve Nations Ford, Sterling, and Steele Creek.	August 2021	Complete	62 %	The New Elementary School (Nations, Sterling, Steele Creek Relief) project is progressing well, many activities continued throughout the facility with a focus on bringing the permanent HVAC systems online to remove the temporary. Drywall installation moved into the administration space and metal stud soffits were installed in the multipurpose room. MEP continued with above ceiling and wall rough-ins. The mason has almost completed the exterior brick veneer and is working on the interior masonry.
New Elementary School (Windsor, Winterfield, Idlewild Relief) (17)	\$ 37,197,022	New 45-classroom elementary school to relieve Windsor, Winterfield, and Idlewild ES.	August 2023	Pre-Design	0 %	The New Elementary School (Windsor, Winterfield, Idlewild Relief) architect completed their pre-schematic design submission. Due diligence activities for site acquisition are pending.
New High School (17) (Olympic Relief)	\$ 109,908,793	New 100 classroom high school; relieves crowding at Olympic High School.	August 2022	Complete	42 %	The construction manager for the New High School Olympic Relief worked throughout the site. Structural steel and load bearing masonry continued. The exterior metal studs followed the structural steel along with the exterior sheathing. The roofer progressed providing more areas for MEP contractors to focus on above ceiling rough-ins. An additional mechanical piping crew was brought on to focus on the main mechanical room. The site walls continued and the mason began the stadium outbuildings. The site work contractor continued their focus on parking lots, prepped the bleacher concrete slabs and erosion control.
New High School (South, Ardrey) (17)	\$ 154,930,460	New 100 classroom high school to relieve South Mecklenburg, Ardrey Kell and Myers Park HS.	August 2024	Design Development	0 %	The New High School (South, Ardrey Relief) architect continues to progress into the design development phase and is scheduled for completion in late April 2021. The project consists of a new 100-classroom high school athletic play fields and stadium. Due diligence and land acquisition activities continue to progress.

Monthly Project Status

2017 Bond March 2021

Project	Current Project Estimate	Project Scope	** Occupy On	Design Phase	Construction Progress	Project Status
New K-8 School (North) (17)	\$ 43,359,367	New 66 classroom K-8 Language Immersion facility located on the old J.M. Alexander Middle School site.	August 2021	Complete	95 %	The construction manager for the New K-8 Language Immersion North project is working through final inspections by Mecklenburg County Building Standards. The building finishes are now complete and final clean has been performed. The architect and design engineers have completed their punch list and sub-contractors are working toward completion. The team is awaiting the school naming and mascot approval; this will allow school signage and gym flooring to be finalized. The landscaper has now completed site stabilization and trees and shrubs are nearing completion. The Hambright Road improvements will commence once the underground utility contractors relocate existing lines. The existing track surface replacement will commence in April.
Northwest School of the Arts (17)	\$ 20,467,000	Replace classroom building built in 1952 and build classroom addition that supports program.	August 2024	Not Started	0 %	Project to be funded by the County in FY22, planning underway.
Shamrock Gardens Elementary School (17)	\$ 35,358,351	New 45-classroom replacement facility.	August 2022	Complete	5 %	The Shamrock Gardens Elementary School construction manager started the aggregate pier installation below the foundations. The site work contractor continued to grade the site specifically to obtain sub grade of the building pads. Erosion control measures continued to be installed throughout the project site.
Sharon Elementary School (17)	\$ 9,475,862	Add 16 classroom building and increase capacity of cafeteria.	August 2021	Complete	80 %	The construction manager for the Sharon Elementary School Building Addition has achieved building dry-in. The roof downspouts are now installed and final grading around the building for new hardscapes are nearing completion. The above ceiling inspections are complete allowing ceiling tiles to be installed. The classroom casework is also complete. The bathrooms have hard tile installed and partitions will follow. The cafeteria expansion is closed in and ceiling grid is installed.

Monthly Project Status

2017 Bond March 2021

Project	Current Project Estimate	Project Scope	** Occupy On	Design Phase	Construction Progress	Project Status
South Academy of International Languages (fka New K-8 School (South) (17)	\$ 42,959,367	New 71 classroom K-8 Language Immersion facility located on the old Nations Ford Elementary School site.	August 2021	Complete	99 %	The construction manager for the South Academy of International Languages (FNA New K-8 Language Immersion South) obtained substantial completion on the project. The fire alarm, security, intercom systems were brought online for monitoring. Final inspections occurred and occupancy has been approved by the Fire Marshal and Building Inspector. The architect reviewed the building preparing and issued the punch-list for final completion. The construction manager continued with final cleaning and closeout activities.
South Mecklenburg High School (17)	\$ 15,622,927	Renovate/replace two classroom buildings built in 1958 to upgrade learning conditions.	January 2025	Not Started	0 %	Project to be funded by the County in FY22, planning underway.
West Charlotte High School (17)	\$ 109,977,166	New 100 classroom school to replace current facility built in 1954.	August 2022	Complete	38 %	The West Charlotte High School mechanical, electrical and plumbing (MEP) contractors worked on above ceiling and interior wall rough-ins. The roof is progressing from south to north and the steel erector is finalizing the structure. The exterior of the building is continues to progress with spray foam insulation and air barrier. Some areas have also started the brick veneer. The roofs are now on the athletic buildings by the stadium allowing the MEP trades to progress. The site contractor continues to install below grade piping and maintain erosion control devices.
West Mecklenburg High School (17)	\$ 10,850,902	Provide new gymnasium, the existing gymnasium will become the auxilliary.	August 2021	Complete	60 %	The West Mecklenburg High School Gym construction manager is nearing dry-in for the new gym. Brick veneer is nearly complete and windows have been installed. The above ceiling rough-ins continue throughout the facility. The gym floor slab is being prepared for the new wood floor. The bathrooms are ready to start the hard tile installations. The roof top HVAC units are set and permanent power will be energized in early April.

MONTHLY PROJECT PHOTOS

PROJECT PROGRESS PHOTOS



Briarwood Elementary School Replacement



Briarwood Elementary School Replacement

PROJECT PROGRESS PHOTOS



Briarwood Elementary School Replacement

PROJECT PROGRESS PHOTOS



Briarwood Elementary School Replacement



Montclair Elementary School Replacement

PROJECT PROGRESS PHOTOS



Messer
WeAreBuilding.

CMS Montclair Elementary School

Image # 87
Date : 03.23.2021
Photo 888.542.0231

Montclair Elementary School Replacement

PROJECT PROGRESS PHOTOS



K-8 Language Immersion North

PROJECT PROGRESS PHOTOS



K-8 Language Immersion North

PROJECT PROGRESS PHOTOS



K-8 Language Immersion North

PROJECT PROGRESS PHOTOS



K-8 Language Immersion North

PROJECT PROGRESS PHOTOS



South Academy of International Languages
(fka K-8 Language Immersion South)

PROJECT PROGRESS PHOTOS



South Academy of International Languages
(fka K-8 Language Immersion South)

PROJECT PROGRESS PHOTOS



South Academy of International Languages
(fka K-8 Language Immersion South)

PROJECT PROGRESS PHOTOS



South Academy of International Languages
(fka K-8 Language Immersion South)

PROJECT PROGRESS PHOTOS



New High School Olympic Relief

PROJECT PROGRESS PHOTOS



New High School Olympic Relief

PROJECT PROGRESS PHOTOS



New High School Olympic Relief

PROJECT PROGRESS PHOTOS



New High School Olympic Relief

PROJECT PROGRESS PHOTOS



New High School Olympic Relief

PROJECT PROGRESS PHOTOS



West Charlotte High School Replacement

PROJECT PROGRESS PHOTOS



West Charlotte High School Replacement

PROJECT PROGRESS PHOTOS



West Charlotte High School Replacement

PROJECT PROGRESS PHOTOS



West Charlotte High School Replacement

PROJECT PROGRESS PHOTOS



West Charlotte High School Replacement

PROJECT PROGRESS PHOTOS



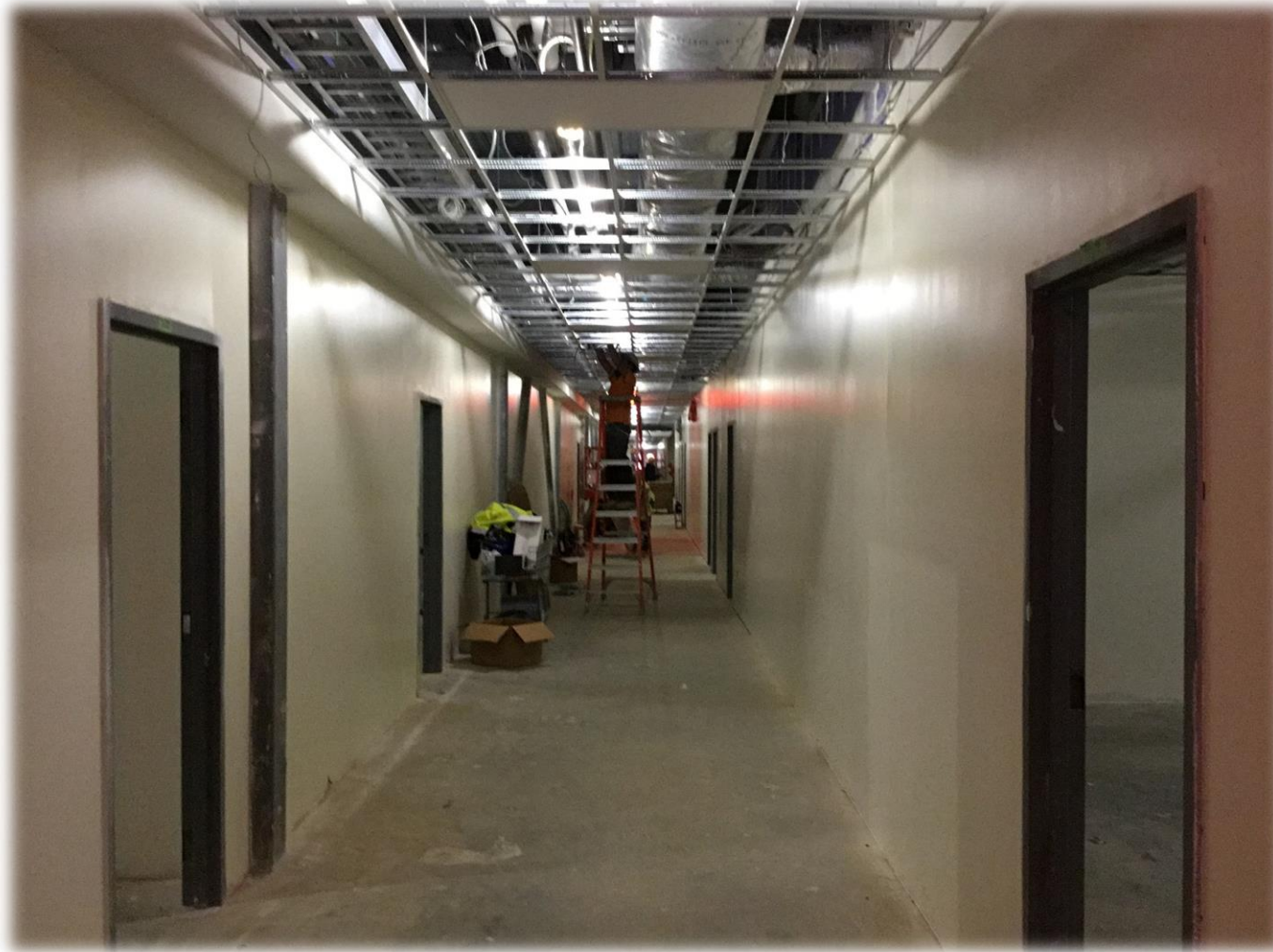
New Elementary School
(Nations Ford, Sterling, Steele Creek Relief)

PROJECT PROGRESS PHOTOS



New Elementary School
(Nations Ford, Sterling, Steele Creek Relief)

PROJECT PROGRESS PHOTOS



New Elementary School
(Nations Ford, Sterling, Steele Creek Relief)

PROJECT PROGRESS PHOTOS



New Elementary School
(Nations Ford, Sterling, Steele Creek Relief)

PROJECT PROGRESS PHOTOS



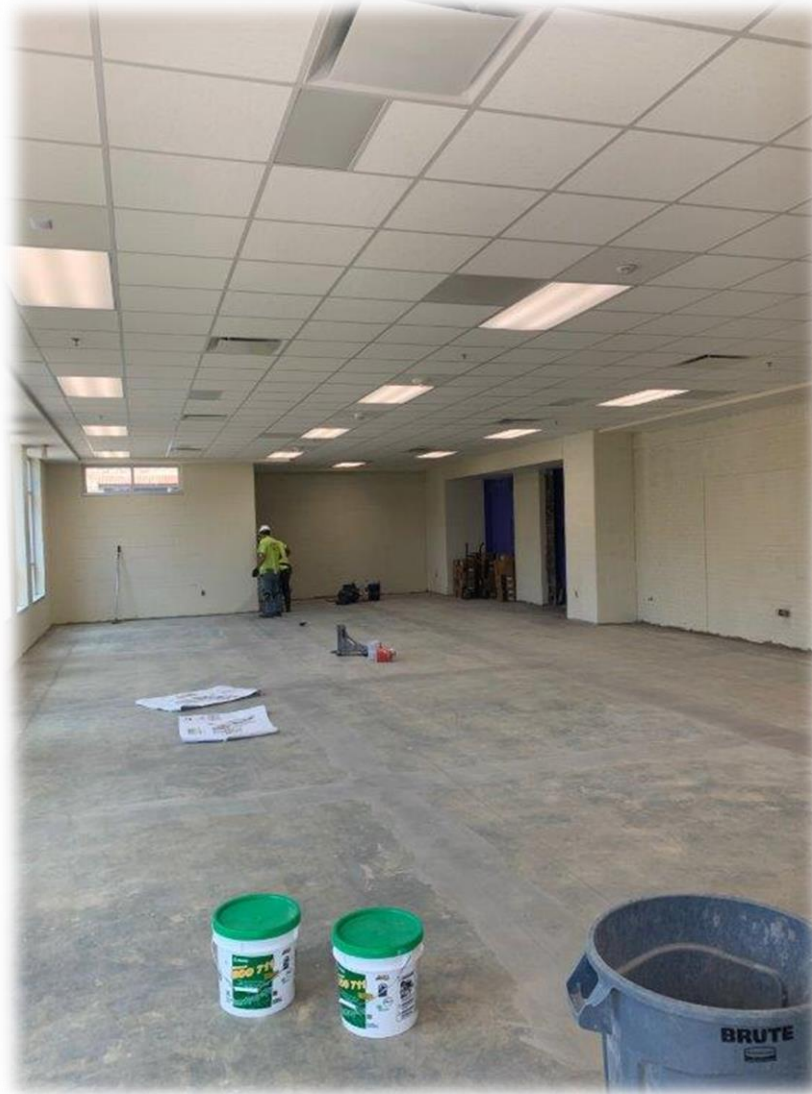
Sharon Elementary School Addition

PROJECT PROGRESS PHOTOS



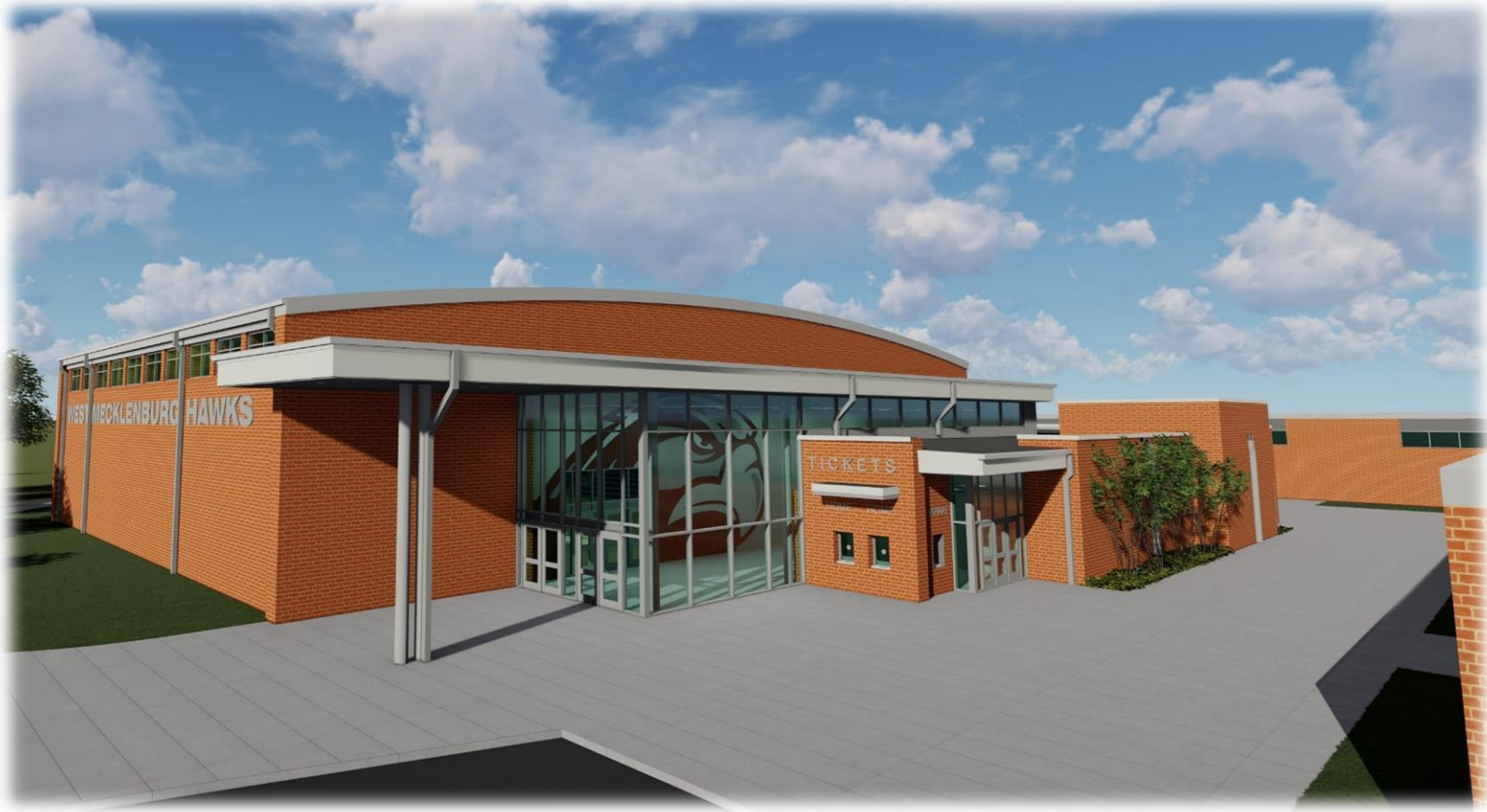
Sharon Elementary School Addition

PROJECT PROGRESS PHOTOS



Sharon Elementary School Addition

PROJECT PROGRESS PHOTOS



West Mecklenburg High School Gym

PROJECT PROGRESS PHOTOS



West Mecklenburg High School Gym

PROJECT PROGRESS PHOTOS



West Mecklenburg High School Gym

PROJECT PROGRESS PHOTOS



Shamrock Gardens Elementary School

PROJECT PROGRESS PHOTOS



Shamrock Gardens Elementary School

PROJECT PROGRESS PHOTOS



Shamrock Gardens Elementary School

PROJECT PROGRESS PHOTOS



Lansdowne Elementary School

PROJECT PROGRESS PHOTOS



Lansdowne Elementary School

PROJECT PROGRESS PHOTOS



Lansdowne Elementary School

MWSBE PARTICIPATION REPORT

Contract Status Report - MWSBE Participation Commitments

Report Date 4/8/2021

Charlotte-Mecklenburg Schools

4/8/2021 2:43:06 PM

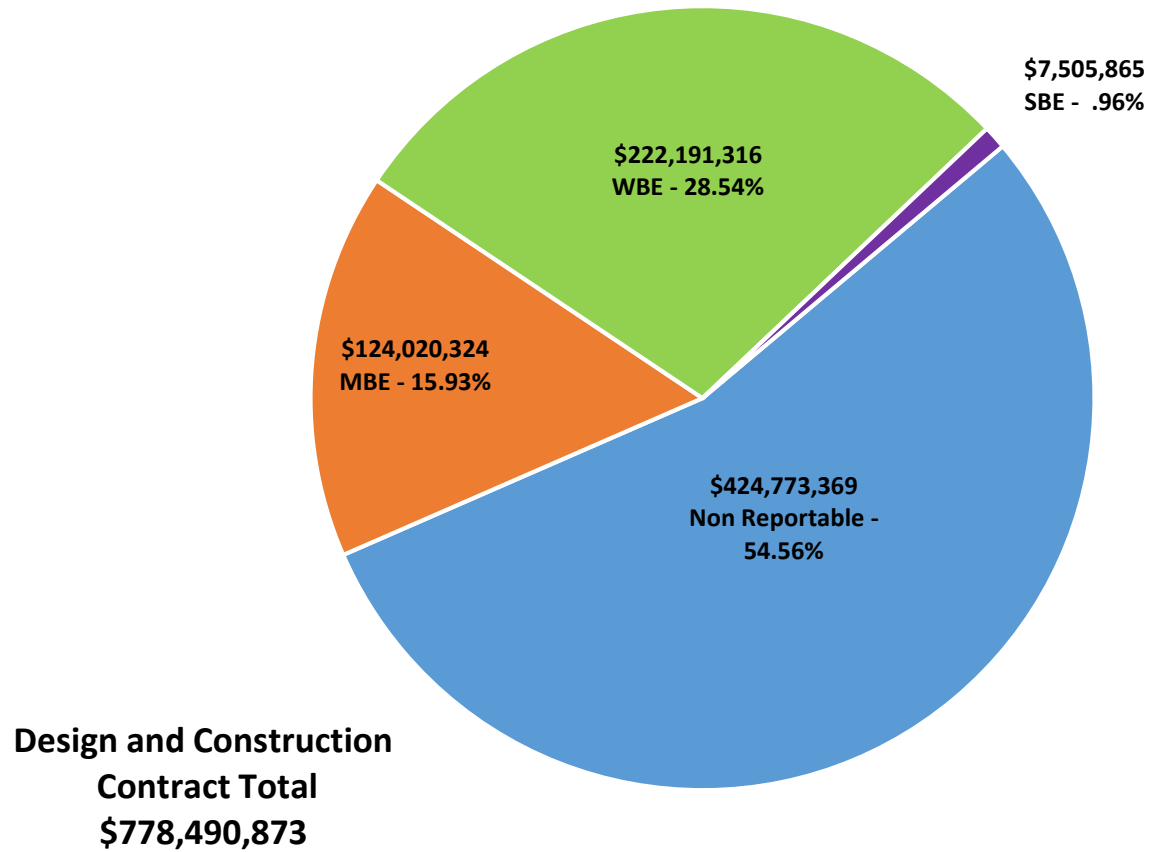
2013 & 2017 Bond Projects

March 2021 Monthly Bond Report

Facility	Contract Amount	African American MBE\$	%	Other MBE \$	%	Total MBE \$	%	Other WBE \$	%	Other SBE \$	%	Total	%
<u>Briarwood Elementary School (17)</u>	\$28,696,836	\$3,521,005	12.27%	\$2,326,100	8.11%	\$5,847,105	20.38%	\$1,111,985	3.87%	\$82,000	0.29%	\$7,041,090	24.54%
<u>Career and Technology Education (17)</u>	\$1,831,259	\$0	0.00%	\$6,271	0.34%	\$6,271	0.34%	\$725	0.04%	\$0	0.00%	\$6,996	0.38%
<u>Career and Technology Education Ph</u>	\$6,617,472	\$1,237,360	18.70%	\$36,997	0.56%	\$1,274,357	19.26%	\$808,886	12.22%	\$369,071	5.58%	\$2,452,315	37.06%
<u>Charlotte East Language Academy</u>	\$27,066,783	\$216,193	0.80%	\$1,704,453	6.30%	\$1,920,646	7.10%	\$10,076,576	37.23%	\$93,027	0.34%	\$12,090,249	44.67%
<u>Charlotte-Mecklenburg Academy (17)</u>	\$17,035,852	\$198,536	1.17%	\$1,029,192	6.04%	\$1,227,728	7.21%	\$872,755	5.12%	\$13,200	0.08%	\$2,113,683	12.41%
<u>Collinswood Language Academy (17)</u>	\$38,633,550	\$412,763	1.07%	\$1,786,047	4.62%	\$2,198,810	5.69%	\$11,144,362	28.85%	\$257,800	0.67%	\$13,600,972	35.21%
<u>Davidson K-8 Conversion (13)</u>	\$12,301,635	\$467,470	3.80%	\$1,103,884	8.97%	\$1,571,354	12.77%	\$4,470,904	36.34%	\$156,204	1.27%	\$6,198,462	50.39%
<u>E.E. Waddell (17)</u>	\$152,000	\$0	0.00%	\$0	0.00%	\$0	0.00%	\$10,950	7.20%	\$0	0.00%	\$10,950	7.20%
<u>East Mecklenburg High School (13)</u>	\$8,618,409	\$126,151	1.46%	\$1,009,766	11.72%	\$1,135,917	13.18%	\$2,600,065	30.17%	\$488,468	5.67%	\$4,224,450	49.02%
<u>East Mecklenburg High School (17)</u>	\$12,409,477	\$0	0.00%	\$107,650	0.87%	\$107,650	0.87%	\$12,500	0.10%	\$2,871	0.02%	\$123,021	0.99%
<u>Garinger High School (17)</u>	\$169,565	\$0	0.00%	\$37,000	21.82%	\$37,000	21.82%	\$20,525	12.10%	\$0	0.00%	\$57,525	33.93%
<u>Harding High School (17)</u>	\$12,906,772	\$1,504,505	11.66%	\$310,356	2.40%	\$1,814,862	14.06%	\$3,846,831	29.80%	\$176	0.00%	\$5,661,869	43.87%
<u>J.M. Alexander Middle School (13)</u>	\$27,252,876	\$3,390,829	12.44%	\$1,320,408	4.85%	\$4,711,237	17.29%	\$8,526,763	31.29%	\$244,708	0.90%	\$13,482,708	49.47%
<u>Lansdowne Elementary School (17)</u>	\$30,608,179	\$14,000	0.05%	\$104,400	0.34%	\$118,400	0.39%	\$45,105	0.15%	\$223,625	0.73%	\$387,130	1.26%
<u>Lincoln Heights Elementary School (1</u>	\$432,426	\$92,274	21.34%	\$18,800	4.35%	\$111,074	25.69%	\$0	0.00%	\$74,503	17.23%	\$185,577	42.92%
<u>Montclair Elementary School (17)</u>	\$26,151,608	\$3,096,412	11.84%	\$2,142,645	8.19%	\$5,239,057	20.03%	\$5,279,462	20.19%	\$390,227	1.49%	\$10,908,746	41.71%
<u>Mountain Island Lake Academy (17)</u>	\$692,000	\$0	0.00%	\$0	0.00%	\$0	0.00%	\$0	0.00%	\$0	0.00%	\$0	0.00%
<u>Myers Park High School (13)</u>	\$9,367,664	\$829,502	8.85%	\$366,413	3.91%	\$1,195,915	12.77%	\$2,557,565	27.30%	\$440,712	4.70%	\$4,194,192	44.77%
<u>Nations Ford Elementary School (at</u>	\$17,312,559	\$1,965,714	11.35%	\$765,473	4.42%	\$2,731,187	15.78%	\$2,296,041	13.26%	\$772,457	4.46%	\$5,799,685	33.50%
<u>New Elementary School (Bain, Leban</u>	\$1,771,565	\$10,000	0.56%	\$35,500	2.00%	\$45,500	2.57%	\$0	0.00%	\$84,390	4.76%	\$129,890	7.33%
<u>New Elementary School (Elon, Hawk</u>	\$1,725,190	\$0	0.00%	\$0	0.00%	\$0	0.00%	\$45,490	2.64%	\$0	0.00%	\$45,490	2.64%
<u>New Elementary School (Hidden Vall</u>	\$1,784,550	\$0	0.00%	\$0	0.00%	\$0	0.00%	\$0	0.00%	\$300	0.02%	\$300	0.02%
<u>New Elementary School (Nations, Ste</u>	\$26,418,711	\$772,455	2.92%	\$19,833,781	75.07%	\$20,606,236	78.00%	\$4,067,896	15.40%	\$238,129	0.90%	\$24,912,261	94.30%
<u>New Elementary School (Windsor, W</u>	\$2,010,570	\$11,000	0.55%	\$0	0.00%	\$11,000	0.55%	\$0	0.00%	\$0	0.00%	\$11,000	0.55%
<u>New High School (17) (Olympic Relief</u>	\$98,154,986	\$14,826,631	15.11%	\$4,093,400	4.17%	\$18,920,031	19.28%	\$7,232,870	7.37%	\$666,450	0.68%	\$26,819,351	27.32%

Facility	Contract Amount	African American MBE\$	%	Other MBE \$	%	Total MBE \$	%	Other WBE \$	%	Other SBE \$	%	Total	%
<u>New High School (South, Ardrey) (17)</u>	\$6,202,800	\$13,500	0.22%	\$96,500	1.56%	\$110,000	1.77%	\$50,000	0.81%	\$1,125	0.02%	\$161,125	2.60%
<u>New K-8 School (North) (17)</u>	\$38,084,067	\$1,964,711	5.16%	\$1,909,480	5.01%	\$3,874,191	10.17%	\$4,583,546	12.04%	\$418,949	1.10%	\$8,876,686	23.31%
<u>Northridge Middle School (13)</u>	\$4,989,570	\$69,874	1.40%	\$804,803	16.13%	\$874,677	17.53%	\$621,842	12.46%	\$50,012	1.00%	\$1,546,531	31.00%
<u>Northwest School of the Arts (13)</u>	\$12,265,376	\$2,347,147	19.14%	\$157,238	1.28%	\$2,504,385	20.42%	\$657,555	5.36%	\$63,936	0.52%	\$3,225,875	26.30%
<u>Oakhurst STEAM Magnet ES/Starmo</u>	\$2,818,260	\$728,788	25.86%	\$143,940	5.11%	\$872,728	30.97%	\$918,979	32.61%	\$0	0.00%	\$1,791,707	63.57%
<u>Olympic High School (13)</u>	\$8,765,306	\$1,228,344	14.01%	\$76,095	0.87%	\$1,304,439	14.88%	\$1,970,523	22.48%	\$261,745	2.99%	\$3,536,707	40.35%
<u>PK8 Conversion Phase II (13)</u>	\$18,122,512	\$380,926	2.10%	\$1,089,238	6.01%	\$1,470,163	8.11%	\$3,155,078	17.41%	\$58,952	0.33%	\$4,684,194	25.85%
<u>Rea Farms STEAM Academy (13)</u>	\$32,174,723	\$570,852	1.77%	\$3,445,385	10.71%	\$4,016,237	12.48%	\$7,535,924	23.42%	\$196,500	0.61%	\$11,748,661	36.52%
<u>Renaissance West STEAM Academy (</u>	\$28,471,160	\$909,934	3.20%	\$3,695,010	12.98%	\$4,604,943	16.17%	\$21,786,637	76.52%	\$63,425	0.22%	\$26,455,005	92.92%
<u>Selwyn Elementary School (13)</u>	\$4,407,067	\$288,360	6.54%	\$199,917	4.54%	\$488,277	11.08%	\$1,026,433	23.29%	\$26,792	0.61%	\$1,541,503	34.98%
<u>Shamrock Gardens Elementary Scho</u>	\$28,240,363	\$1,788,332	6.33%	\$1,431,447	5.07%	\$3,219,779	11.40%	\$22,595,506	80.01%	\$282,184	1.00%	\$26,097,469	92.41%
<u>Sharon Elementary School (17)</u>	\$8,401,494	\$259,494	3.09%	\$399,099	4.75%	\$658,593	7.84%	\$1,211,518	14.42%	\$208,346	2.48%	\$2,078,457	24.74%
<u>South Academy of International Lang</u>	\$37,765,744	\$5,077,406	13.44%	\$2,159,095	5.72%	\$7,236,501	19.16%	\$9,880,960	26.16%	\$309,838	0.82%	\$17,427,300	46.15%
<u>South Mecklenburg High School (13)</u>	\$15,305,748	\$2,233,506	14.59%	\$1,006,044	6.57%	\$3,239,550	21.17%	\$1,935,863	12.65%	\$41,943	0.27%	\$5,217,355	34.09%
<u>Statesville Road ES (13)</u>	\$17,529,185	\$392,306	2.24%	\$1,207,646	6.89%	\$1,599,952	9.13%	\$4,503,562	25.69%	\$81,988	0.47%	\$6,185,502	35.29%
<u>West Charlotte High School (17)</u>	\$94,938,900	\$15,116,534	15.92%	\$1,300,350	1.37%	\$16,416,884	17.29%	\$72,580,016	76.45%	\$562,104	0.59%	\$89,559,003	94.33%
<u>West Mecklenburg High School (17)</u>	\$9,886,102	\$279,936	2.83%	\$417,752	4.23%	\$697,688	7.06%	\$2,149,117	21.74%	\$279,710	2.83%	\$3,126,515	31.63%
Grandtotal	\$778,490,873	\$66,342,748	8.52%	\$57,677,576	7.41%	\$124,020,324	15.93%	\$222,191,316	28.54%	\$7,505,865	0.96%	\$353,717,504	45.44%

MWSBE Participation 2013 & 2017 Bond Projects



PROJECT CONTROLS

CHARLOTTE-MECKLENBURG BOARD OF EDUCATION
2013 BOND SERIES-CAPITAL IMPROVEMENT PROGRAM
BUDGET STATUS REPORT

	Original Project Budget	Current Project Budget	Committed Amount	Approved Change Orders	Total Committed	Pending Commitments	To Be Committed	Prev Paid To Date	Paid To Date	Balance To Complete	Monthly Expenditure
	(A)	(B)	(C)	(D)	(E)=C+D	(F)	(G)=(B-E-F)	(H)	(I)	(J)=(B-I)	(K)=(I-H)
<u>A. REPLACEMENT & RENOVATIONS</u>											
1 Career & Technology Education Institutes Phase 1:	\$8,640,000	\$18,256,861	\$7,034,819	\$333,080	\$7,367,899	\$0	\$10,888,962	\$7,329,247	\$7,329,247	\$10,927,614	\$0
2 Davidson K-8 Conversion	\$9,500,000	\$13,610,000	\$2,130,689	\$11,364,591	\$13,495,280	\$0	\$114,720	\$13,455,524	\$13,455,524	\$154,476	\$0
3 J.M. Alexander Middle Replacement	\$30,672,000	\$29,845,539	\$4,502,518	\$25,343,021	\$29,845,539	\$0	\$0	\$29,845,539	\$29,845,539	\$0	\$0
4 Nations Ford Elementary Replacement	\$19,440,000	\$19,231,603	\$3,958,869	\$15,272,733	\$19,231,603	\$0	\$0	\$19,231,604	\$19,231,604	\$0	\$0
5 Northwest School of the Arts	\$12,420,000	\$12,868,718	\$2,047,917	\$10,820,801	\$12,868,718	\$0	\$0	\$12,868,719	\$12,868,719	\$0	\$0
6 Oakhurst STEAM Magnet Elementary/Starmount	\$5,940,000	\$5,407,812	\$3,471,397	\$1,936,415	\$5,407,812	\$0	\$0	\$5,407,812	\$5,407,812	\$0	\$0
7 Pre-K-8 Conversions Phase II: Ashley Park/ Bruns	\$24,732,000	\$19,791,457	\$4,167,669	\$15,563,538	\$19,731,207	\$0	\$60,250	\$19,695,490	\$19,700,807	\$90,650	\$5,317
8 Selwyn Elementary	\$2,592,000	\$4,687,004	\$744,378	\$3,881,906	\$4,626,284	\$0	\$60,720	\$4,624,831	\$4,624,831	\$62,172	\$0
9 Statesville Road Elementary	\$20,340,000	\$20,648,510	\$5,081,473	\$15,567,037	\$20,648,509	\$0	\$0	\$20,648,509	\$20,648,509	\$0	\$0
Total Replacement & Renovations	\$134,276,000	\$144,347,503	\$33,139,729	\$100,083,122	\$133,222,851	\$0	\$11,124,652	\$133,107,274	\$133,112,591	\$11,234,912	\$5,317
<u>B. RESPONSE TO ENROLLMENT GROWTH</u>											
1 East Mecklenburg High Addition	\$12,744,000	\$10,988,287	\$3,369,684	\$7,618,603	\$10,988,287	\$0	\$0	\$10,988,287	\$10,988,287	\$0	\$0
2 Myers Park High Addition	\$22,248,000	\$11,070,580	\$1,207,493	\$9,833,448	\$11,040,942	\$0	\$29,639	\$11,040,941	\$11,040,941	\$29,639	\$0
3 Northridge Middle Addition	\$6,448,000	\$6,366,170	\$2,114,306	\$4,251,865	\$6,366,171	\$0	\$0	\$6,366,171	\$6,366,171	\$0	\$0
4 Olympic High Addition/Renovation	\$8,964,000	\$8,947,310	\$2,002,694	\$6,944,615	\$8,947,310	\$0	\$0	\$8,947,310	\$8,947,310	\$0	\$0
5 South Mecklenburg High Addition	\$18,360,000	\$16,307,355	\$2,922,282	\$13,385,073	\$16,307,355	\$0	\$0	\$16,307,355	\$16,307,355	\$0	\$0
6 Charlotte East Language Academy (FKA -New Lang	\$30,376,000	\$31,456,414	\$5,740,242	\$25,692,685	\$31,432,927	\$0	\$23,487	\$31,387,929	\$31,387,929	\$68,485	\$0
7 Rea Farms STEAM Academy	\$31,376,000	\$40,476,000	\$9,134,265	\$30,214,465	\$39,348,729	\$52,310	\$1,074,961	\$38,089,744	\$38,112,174	\$2,363,826	\$22,430
8 Renaissance West STEAM Academy (FKA New Pre-	\$30,376,000	\$31,740,150	\$5,667,328	\$26,072,822	\$31,740,150	\$0	\$0	\$31,698,952	\$31,698,952	\$41,199	\$0
Total Response to Enrollment Growth	\$160,892,000	\$157,352,267	\$32,158,295	\$124,013,576	\$156,171,871	\$52,310	\$1,128,087	\$154,826,689	\$154,849,119	\$2,503,148	\$22,430
<u>C. CONTINGENCY</u>											
	\$0	\$0	\$0	\$0	\$0	\$0	\$0	\$0	\$0	\$0	\$0
Total Contingency	\$0	\$0	\$0	\$0	\$0	\$0	\$0	\$0	\$0	\$0	\$0
TOTAL LOCAL BOND PROGRAM	\$295,168,000	\$301,699,771	\$65,298,024	\$224,096,698	\$289,394,722	\$52,310	\$12,252,739	\$287,933,963	\$287,961,710	\$13,738,060	\$27,748

Original project estimated costs approved by the Board Of Education on July 23, 2013 and approved by the voters of Mecklenburg County on November 5, 2013.

Note: Mecklenburg County's appropriated interest from COPS to increase funding for the 2013 Bond Program.

CHARLOTTE-MECKLENBURG BOARD OF EDUCATION
2017 BOND SERIES-CAPITAL IMPROVEMENT PROGRAM
BUDGET STATUS REPORT

	Original Project Budget	Current Project Budget	Committed Amount	Approved Change Orders	Total Committed	Pending Commitments	To Be Committed	Prev Paid To Date	Paid To Date	Balance To Complete	Monthly Expenditure
	(A)	(B)	(C)	(D)	(E)=C+D	(F)	(G)=(B-E-F)	(H)	(I)	(J)=(B-I)	(K)=(I-H)
<u>A. REPLACEMENT & RENOVATIONS</u>											
1 Briarwood Elementary *	\$29,091,619	\$31,962,730	\$4,968,903	\$26,609,642	\$31,578,544	\$134,250	\$249,936	\$13,539,619	\$15,871,744	\$16,090,986	\$2,332,125
2 Bruns Academy Replacement	\$34,207,808	\$39,784,927	\$1,433,024	\$218,050	\$1,651,074	\$0	\$38,133,853	\$0	\$0	\$39,784,927	\$0
3 Career & Technology Education Upgrades	\$10,101,734	\$10,159,765	\$2,241,225	\$12,371	\$2,253,596	\$0	\$7,906,169	\$899,519	\$1,060,158	\$9,099,607	\$160,639
4 Collinswood K-8 *	\$44,172,540	\$42,272,540	\$5,010,866	\$36,789,134	\$41,800,000	\$0	\$472,540	\$41,319,462	\$41,324,289	\$948,251	\$4,827
5 East Mecklenburg HS	\$12,771,594	\$15,058,594	\$1,740,015	\$11,301,998	\$13,042,013	\$0	\$2,016,581	\$805,815	\$828,007	\$14,230,587	\$22,192
6 Garinger HS	\$13,936,979	\$14,486,979	\$818,903	(\$70,000)	\$748,903	\$0	\$13,738,076	\$45,125	\$45,125	\$14,441,854	\$0
7 Harding University High *	\$18,330,263	\$14,530,263	\$2,048,751	\$11,699,734	\$13,748,485	\$41,133	\$740,644	\$13,145,197	\$13,145,197	\$1,385,066	\$0
8 Charlotte-Mecklenburg Academy (FKA -EC Specialty	\$18,957,960	\$18,079,506	\$2,175,504	\$15,790,598	\$17,966,102	\$2,665	\$110,739	\$17,699,220	\$17,699,220	\$380,286	\$0
9 Lansdowne Elementary	\$29,391,270	\$37,128,834	\$4,110,677	\$28,400,521	\$32,511,198	\$0	\$4,617,636	\$1,877,290	\$2,061,943	\$35,066,891	\$184,653
10 Lincoln Heights Elementary	\$3,740,478	\$4,588,675	\$577,649	\$26,774	\$604,423	\$0	\$3,984,252	\$383,738	\$383,738	\$4,204,937	\$0
11 Montclair Elementary Replacement *	\$28,559,390	\$28,559,390	\$2,438,936	\$26,065,178	\$28,504,114	\$14,400	\$40,876	\$26,172,349	\$26,593,127	\$1,966,263	\$420,777
12 Mountain Island k-8	\$9,218,439	\$10,488,400	\$1,074,565	\$0	\$1,074,565	\$0	\$9,413,835	\$0	\$0	\$10,488,400	\$0
13 Northwest School of the Arts	\$17,632,202	\$20,467,000	\$731,736	\$117,644	\$849,380	\$0	\$19,617,620	\$0	\$0	\$20,467,000	\$0
14 Shamrock Gardens Elementary *	\$29,890,351	\$35,358,351	\$3,657,431	\$26,053,763	\$29,711,194	\$13,680	\$5,633,477	\$3,195,487	\$3,900,699	\$31,457,652	\$705,212
15 Sharon Elementary	\$7,706,528	\$9,475,862	\$1,480,959	\$7,554,026	\$9,034,985	\$67,583	\$373,294	\$5,077,263	\$5,881,142	\$3,594,720	\$803,879
16 South Mecklenburg HS	\$13,352,143	\$15,622,927	\$554,114	\$94,238	\$648,352	\$0	\$14,974,575	\$0	\$0	\$15,622,927	\$0
17 E.E. Waddell Magnet HS	\$4,571,709	\$5,137,367	\$341,726	\$0	\$341,726	\$0	\$4,795,641	\$575	\$575	\$5,136,792	\$0
18 West Charlotte HS Replacement	\$109,977,166	\$109,977,166	\$12,014,174	\$88,163,139	\$100,177,313	\$152,000	\$9,647,853	\$33,264,288	\$36,566,963	\$73,410,203	\$3,302,675
19 West Mecklenburg HS	\$11,065,440	\$10,850,902	\$1,670,127	\$8,756,389	\$10,426,516	\$37,450	\$386,937	\$4,452,568	\$4,930,870	\$5,920,032	\$478,302
20 John Taylor Williams	\$13,964,339	\$15,732,600	\$579,520	\$0	\$579,520	\$0	\$15,153,080	\$0	\$0	\$15,732,600	\$0
Total Replacement & Renovations	\$460,639,952	\$489,722,778	\$49,668,804	\$287,583,199	\$337,252,003	\$463,161	\$152,007,615	\$161,877,515	\$170,292,796	\$319,429,981	\$8,415,281
<u>B. RESPONSE TO ENROLLMENT GROWTH</u>											
1 South Academy of International Languages	\$45,359,367	\$42,959,367	\$6,239,134	\$35,673,741	\$41,912,875	\$149,388	\$897,105	\$32,710,710	\$34,638,377	\$8,320,990	\$1,927,667
2 New K-8 North Language Immersion *	\$45,359,367	\$43,359,367	\$6,352,563	\$35,739,393	\$42,091,956	\$105,721	\$1,161,690	\$33,918,408	\$35,019,057	\$8,340,310	\$1,100,649
3 New Elementary School - Nations Ford/Sterling/Steel	\$29,173,829	\$31,572,550	\$6,911,429	\$24,395,881	\$31,307,310	\$91,753	\$173,487	\$15,805,693	\$17,776,379	\$13,796,171	\$1,970,685
4 New Elementary School - Bain/Lebanon Relief	\$29,988,332	\$31,455,951	\$3,293,608	\$0	\$3,293,608	\$0	\$28,162,343	\$1,086,370	\$1,148,546	\$30,307,405	\$62,176
5 New Elementary School - Windsor Park Relief *	\$30,422,230	\$37,197,022	\$3,279,093	\$177,404	\$3,456,497	\$0	\$33,740,525	\$11,000	\$11,000	\$37,186,022	\$0
6 New Elementary School - Elon/Hawk Ridge Relief *	\$30,426,712	\$43,476,676	\$13,807,022	\$0	\$13,807,022	\$0	\$29,669,654	\$10,897,582	\$10,904,988	\$32,571,688	\$7,407
7 New Elementary School - Hidden Valley Relief	\$30,518,345	\$34,697,022	\$3,920,384	\$179,875	\$4,100,259	\$0	\$30,596,763	\$950,408	\$1,020,708	\$33,676,314	\$70,300
8 New High School - Olympic Relief	\$109,908,793	\$109,908,793	\$11,502,778	\$91,828,509	\$103,331,287	\$120,744	\$6,456,762	\$31,077,894	\$36,018,290	\$73,890,503	\$4,940,395
9 New High School - South Meck/Ardrey Kell Relief *	\$110,287,621	\$154,930,460	\$10,840,232	\$711,379	\$11,551,611	\$0	\$143,378,849	\$1,198,185	\$1,689,317	\$153,241,143	\$491,132
Total Response to Enrollment Growth	\$461,444,596	\$529,557,208	\$66,146,243	\$188,706,182	\$254,852,424	\$467,606	\$274,237,177	\$127,656,249	\$138,226,661	\$391,330,546	\$10,570,412
<u>C. CONTINGENCY</u>											
	\$0	\$0	\$0	\$0	\$0	\$0	\$0	\$0	\$0	\$0	\$0
Total Contingency	\$0	\$0	\$0	\$0	\$0	\$0	\$0	\$0	\$0	\$0	\$0

CHARLOTTE-MECKLENBURG BOARD OF EDUCATION
2017 BOND SERIES-CAPITAL IMPROVEMENT PROGRAM
BUDGET STATUS REPORT

	Original Project Budget	Current Project Budget	Committed Amount	Approved Change Orders	Total Committed	Pending Commitments	To Be Committed	Prev Paid To Date	Paid To Date	Balance To Complete	Monthly Expenditure
	(A)	(B)	(C)	(D)	(E)=C+D	(F)	(G)=(B-E-F)	(H)	(I)	(J)=(B-I)	(K)=(I-H)
TOTAL LOCAL BOND PROGRAM	\$922,084,548	\$1,019,279,985	\$115,815,047	\$476,289,381	\$592,104,427	\$930,767	\$426,244,792	\$289,533,764	\$308,519,458	\$710,760,528	\$18,985,693

Original project estimated costs approved by the Board Of Education on July 25, 2017 approved by the voters of Mecklenburg County on November 7, 2017.

*Project included in \$33.2M early funding approved by Board Of Education on August 9, 2016 and Mecklenburg Board of County Commissioners on September 6, 2016. On February 19, 2019 an additional \$8M was approved for New Elementary School - Elon/Hawk Ridge Relief site.

*Current Budget includes an additional \$89.2M to fund increase land and construction costs. The additional funds were approved by the Board of County Commissioners on June 16, 2020.

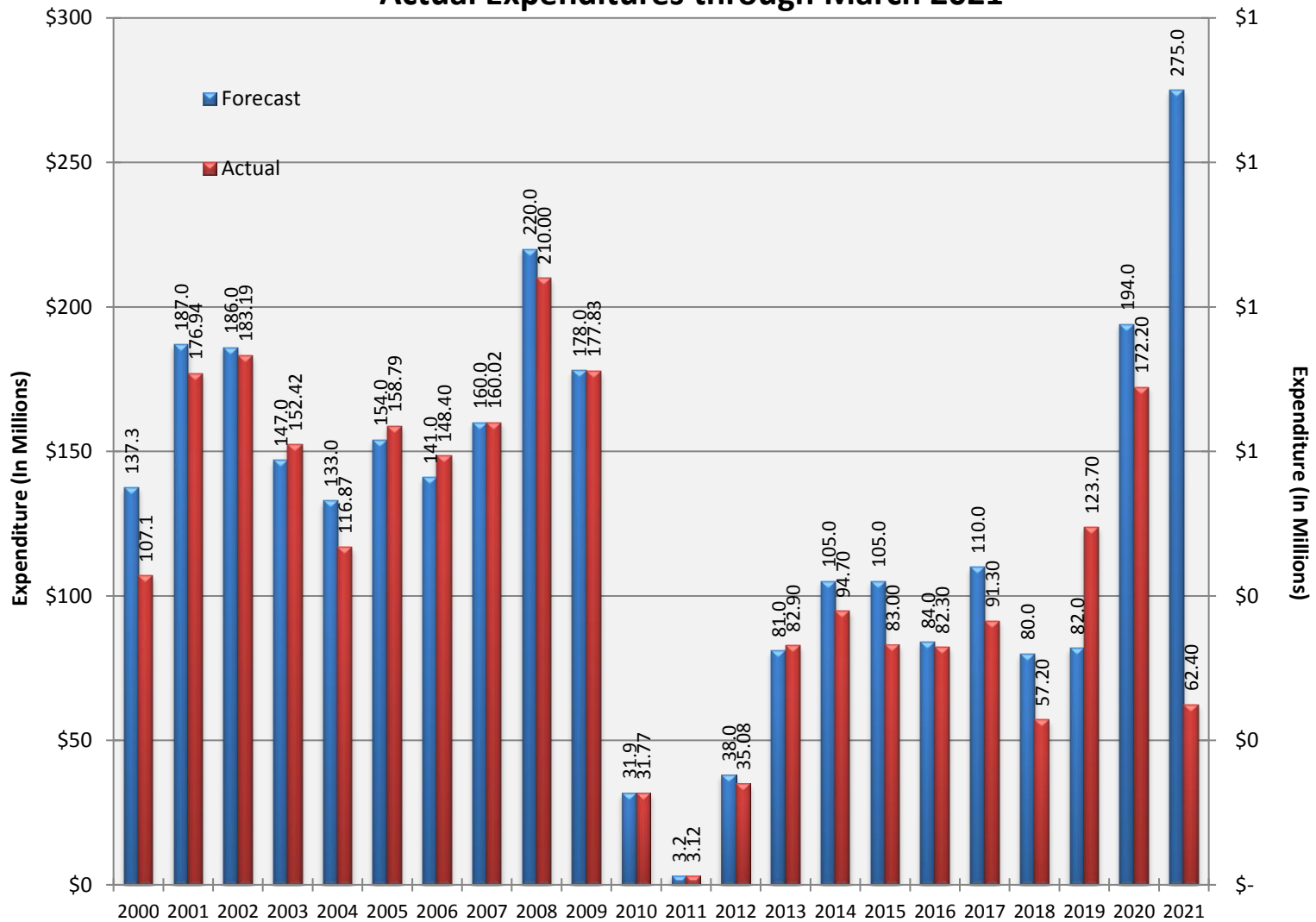
Charlotte-Mecklenburg Board of Education
Approved Construction or Repair Change Orders*
Reporting Period: March 2021

Funding Source	Project Name	Contractor	Description	Change Order Amount	Revised Contract Value
2017 Bond	West Charlotte High School (17)	Rodgers-Holt Brothers, a Joint Venture	Add sensor faucets, Unforeseen Asbestos Abatement, Trash Cans to D-Zone, Removal of Card Readers at Athletic Field Houses, Eliminate Foundation Drains at Boiler Room, Add Tube Steel for Elevator, Eliminate Backflow Preventers at Field Houses, Change Door Frames at Area F, Revised Canopy Connection, Added Steel Supports for Mechanical Pipe Openings	\$0.00	\$88,558,070.00
2017 Bond	Briarwood Elementary School (17)	New Atlantic Contracting, Inc.	Add sensor faucets	\$40,538.00	\$26,591,649.00

* Not previously presented to the Board of Education for Approval (less than \$90,000)

EXPENDITURE SUMMARY

Forecast Expenditure versus
Actual Expenditures through March 2021



** Expenditures include 1996 Bond thru 2017 Early Funding

GLOSSARY

Glossary

- **Project Management** – This section includes updates from our project managers and describes the currently active construction projects. This includes from Board of Education award thru final completion.
- **Design and Bidding** – This section contains updates from our design managers on the projects currently in the design phase. This phase from design award to Board of Education award of construction.
- **Controls** – Section includes misc. updates from controls group including expenditures, related Board of Education awards during the reporting period, cash flow information. This section covers all projects from approved bond through final expenditures and bond close with the county.
- **MWSBE** – Contains updates from the MWSBE Director and team, including current activity and summaries of the participation by MWSBE providers on our program.
- **Bond Progress Summary** – Provides a summary of bond financials including bond value, committed/pending amounts, paid to date, expended this month.
- **Project Procurement Dates** - Next 90 Days major project bid activity.
- **Mobile Swing Space Utilization** – Includes a summary of program related swing space currently in use and the schedule of use.
- **Bond Summary Schedule** – Current program summary schedule including planned design, construction and FF&E. These activities are fed from detailed schedules and are fine-tuned as project information is available.
- **Project Contractor Teams**; Provides summary of turnover dates for completed/closed projects since 2010 including architects/designers and contractors.
- **School Site Location Maps** – General location of bond projects (2017) by type.
- **Project Status Report** – This section of the report provides a summary of the bond project scope, current estimate (all sources), planned occupancy/actual occupancy date. It also provides a current status of the design phase, construction progress and a brief update. The report currently includes 2013 and 2017 bond projects that have or will be completed after to August 2016.
- **MWSBE Participation Report** – The MWSBE report provides a summary of the participation on the 2013 & 2017 Bond funded projects.
- **Project Progress Photos** – Includes photos of active construction projects.
- **Budget Summary Reports** – These reports are by funding source and summarize financial activity to date on the projects. This includes original and current project estimates, committed values, amounts paid to date, balances and monthly expenditures.
- **Change Orders < \$90,000** – This month's approved construction or repair change orders < \$90,000.
- **Expenditure Summary** – Provides a summary of Bond Expenditures by calendar year.