

Capital Improvement Program

Monthly Bond Report January 2021



New High School Olympic Relief



CAPITAL PROGRAM SERVICES Capital Improvement Program

JANUARY 2021 **MONTHLY BOND REPORT**

PROGRAM OVERVIEW

- Project Management
- Design and Bidding
- Controls
- MWSBE
- Bond Progress Summary
- Project Procurement - Next 90 Days
- Swing Space Utilization
- Bond Summary Schedule
- Project Contractor Teams; Projects in Design/Construction and Substantially Completed/Closed
- School Site Location Maps
 - Elementary Schools
 - Middle Schools
 - High Schools & Specialty Schools

PROJECT STATUS REPORT

MWSBE PARTICIPATION REPORT

PROJECT PROGRESS PHOTOS

PROJECT CONTROLS

- Budget Summary Reports
 - 2013 Bond Series
 - 2017 Bond Series
- Change Orders < \$90,000
- Expenditure Summary

GLOSSARY

PROGRAM OVERVIEW

PROJECT MANAGEMENT

The following is a summary of the activity on the bond funded projects in construction during the month of January.

The construction manager for the **Briarwood Elementary replacement school (17)** project focused on completing the dry-in of the building. Roofing installations were completed on the two-story building and began on the administration building. The mason mobilized the spray foam contractor while focusing on the interior CMU walls and brick veneer where available. Interior and exterior metal stud installation continued throughout the building. Overhead and in wall mechanical, electrical and plumbing activities continued throughout. The site work contractor focused on the bus entry drive. The 45-classroom replacement school is scheduled to be occupied in August 2021. Upon completion, demolition and remaining site work will commence and be completed in 2022.

The construction manager for the **Montclair Elementary School (17)** project removed the excess soil from the old building area and final graded for the bus lot. Underground electrical conduit was installed for the exterior light poles. Stone base for the bus lot was installed. The new 45-classroom elementary school building has been occupied by the Principal and staff and is available for students as scheduled. Demolition and remaining site work will be completed in spring of 2021.

The **New Elementary School (Nations, Sterling, Steele Creek Relief) (17)** construction manager continued spray foam on the exterior walls followed by brick veneer. The building was dried in with the completion of the roof system, final terminations and remaining coping cap. Interior studs and CMU installation continued allowing in wall rough-ins to follow. Mechanical, electrical and plumbing rough-ins continued above ceiling and in walls. Drywall began on the first floor of the classroom building. The new 45-classroom relief elementary school is scheduled to be occupied August of 2021.

The construction manager for the **New High School Olympic Relief (17)** began structural steel for the east classroom building. The concrete slab was poured for the West classroom wing. Exterior metal studs were started on the administration building. The roof system was started on the kitchen/cafeteria building. Overhead rough-ins continued in areas that became available. The site work contractor graded and began stone base installation on the staff/visitor lot. The stadium concrete retaining wall footings were installed with the vertical wall started. The 100-classroom relief high school is scheduled to be occupied in August 2022

The **New K-8 Language Immersion North (17)** project has progressed into final finishes. The above ceiling inspections have been completed for the facility allowing ceiling tiles to be installed. Casework, doors and VCT flooring is also being installed throughout. The MEP trades are installing fixtures and devices. The gym floor and bleachers are complete and athletic striping will follow. School colors will be selected now that a Principal has been assigned. The site is also taking shape as areas are finalized and seeding and sod progresses. The Hambright Road improvements have been scheduled with local underground utility contractors to relocate existing lines as needed. The project is scheduled to be occupied August 2021.

The construction manager for the **Shamrock Elementary School** completed the demolition of the existing building and the removal of the concrete slabs. Grading operations started with the installation of the temporary detention basin. The new 45-classroom replacement elementary school is scheduled to be occupied August 2022.

The construction manager for the **Sharon Elementary School Building Addition (17)** has installed the roof and the windows are being installed at classroom elevations. The brick veneer is now complete. Mechanical, electrical and plumbing overhead rough-ins are able to progress since the roof is dried in. The cafeteria expansion now has the brick veneer complete and window framing is progressing. The added parking at the front of the school was completed and turned over for use. Occupancy of the 16-classroom addition is scheduled for August 2021.

The construction manager for the **South Academy of International Languages** (*FNA New K-8 Language Immersion South (17)*) continued with the installation of the finishes throughout the building. Paint, flooring, casework, toilet partitions progressed well. The storefront materials arrived and installation was started. Mechanical, electrical and plumbing trim out continued with plumbing fixtures, receptacles, supply and return grills and faceplates. Exterior improvements continued with final landscaping sod, trees and bushes. The project is scheduled to be occupied August 2021.

The **West Charlotte High School (17)** construction manager has multiple trades working across the site and buildings. They continue to work from one end of the new building to the other with load bearing masonry and the installation of structural steel framing. Roof joists have been set in some areas allowing roofing to start. The in wall rough-ins continue as walls are placed and above ceiling rough-ins for mechanical and electrical have started. The plumber has also been busy with sanitary sewer and supply piping. The athletic buildings are also progressing with load bearing masonry walls. The site contractor is preparing the parking lot area for paving. The project is scheduled to be occupied August 2022. Once the new school is occupied the existing school will be demolished and final site work will take place with final project completion in August 2023.

The **West Mecklenburg High School Gym (17)** construction manager has topped out the load bearing masonry in the new gym. This allowed the slab on grade at the main gym to be poured. The structural steel roof framing is being set. Overhead rough-ins for MEP will follow. The site contractor is working on the areas to be paved around the new gym. Occupancy of the new gymnasium is scheduled for August 2021 the existing gym will then be used as an auxiliary gym.

DESIGN AND BIDDING

The following is a summary of the activity on the bond funded projects in design and bidding phase during the month of January.

The **CTE projects (17)** at **Harding, South Mecklenburg** and **Olympic** continue to progress with amendments to the construction documents to comply with LUESA building permit review comments. The construction manager has started their pre-qualification efforts with the subcontractor community. The bid period is scheduled to start in late February 2021 and is scheduled for board approval in May 2021. The Harding project consist of renovations to existing classrooms in the auditorium building to develop a suite of technology classrooms. The project at Olympic includes electrical up fits to the existing carpentry lab which expands the curriculum to include demonstration learning booths for plumbing and electrical trades. The project at South Mecklenburg consists of renovating the old kitchen area into a culinary arts lab and classroom. Occupancy for these projects is scheduled for January 2022.

The **East Mecklenburg High School (17)** project has progressed into the bidding phase and is scheduled for board approval in late March 2021. The project consists of a 30 classroom addition and is scheduled to be occupied August 2022.

The **Garinger High School Addition/Renovation (17)** and **CTE** projects continue to progress in the construction document design phase. The architect/civil engineer have submitted civil drawings for City Engineering for review and approval. The construction manager has started preparations for developing pre-qualification criteria for the subcontractors interested in bidding this project. The project's scope consist of a 2-story building with 16 classrooms. The design also includes modifications in the existing 300 building. The project is scheduled to be completed for occupancy in August 2022.

The construction manager for the **Lansdowne Elementary School Replacement (17)** project has completed the bidding phase and continues to analyze bids and prepare documents for the GMP change order. The board approval is

scheduled to occur in February 2021. The new school construction work is scheduled to start in late February and building occupy in August 2022. A second construction phase will follow which includes the existing school demolition and site improvements.

The **New Elementary School (Bain, Lebanon, Piney Grove Relief) (17)** architect continues to finalize the construction documents. The construction manager continues with preparation of procurement documents and activities including pre-qualifications, advertisement, MWSBE outreach and bid manual preparation. Bids are to be received in March 2021 and is schedule to be taken to the board for approval prior to May 2021. Occupancy is scheduled for August 2022. The project consists of a 45-classroom school located next to the existing Mint Hill Middle School.

The **New Elementary School (Elon, Hawk Ridge, Polo Relief) (17)** architectural contract has been submitted for approval and upon completion the design will commence. This new 45-classroom school will be located across from the Ardrey Kell High School and is scheduled for occupancy in August 2023.

The **New Elementary School (Hidden Valley, JW Grier, Newell Relief) (17)** project team kicked off the start of the design phase with the architect. This new school will be located next to Northridge Middle School and is scheduled for occupancy in August 2023.

The **New Elementary School (Winsor, Winterfield, Idlewild Relief) (17)** architectural contract has been submitted for approval and upon completion the design will commence. Due diligence for site acquisition continues. This school is scheduled for occupancy in August 2023.

The **New High School (South, Ardrey Relief) (17)** architect has completed the schematic design phase and progressed into the design development phase (DD). The DD is scheduled for completion in late April 2021. The project consists of a new 100-classroom high school athletic play fields and stadium. Due diligence and land acquisition activities continue to progress.

CONTROLS

Expenditures for January were \$22.8M. This brings our fiscal year to date total to \$121.8M against the 2021 fiscal year cash flow projection of \$275M. The Controls team set up budgets for projects turning over in FY 2022 to procure furniture, fixtures and equipment. The Controls team also continues the reconciliation and closeout of completed 2013 and 2017 bond projects. Available funding is being accumulated to be used for future capital needs.

The Controls team continues to submit notices of potential changes at school sites so senior staff can adequately evaluate any issues. Additionally, the Controls team continues the processing of contracts, invoices, preparing notices of potential change, change orders, pay applications and check requests for projects under construction. Captured construction cost data is used to prepare financial reports such as detailed cost reports, budget summaries, reconciliation to CMS books, revisions to and updated cash flows and complete special financial requests by CMS and Mecklenburg County. This process, along with data compilation and management, allows senior staff to provide the proper guidance/direction and accurate information to the program stakeholders.

No Bond related consent items were submitted for Board of Education approval during the month of January 2021.

MWSBE

As of January 2021 the overall MWSBE utilization percentage related to design and construction of the 2013 and 2017 bond projects is 48.16% which includes 16.89% participation by minority contractors, 30.26% by women contractors and 1.02% participation by small business contractors. This accounts for more than \$353 million spent on the utilization of Minority, Women and Small Business Contractors.

The Diversity & Inclusion Office of Charlotte-Mecklenburg Schools continued to conduct several individual virtual orientations with new MWSBE contractors and prime contractors. In addition, team members also attended/hosted the following outreach sessions/pre-bid meetings and/or workforce development opportunities:

- Lansdowne Elementary Replacement Pre-bid hosted by Edifice.
- Harding, Olympic and South Meck CTE projects outreach hosted by Branch Builds/Brownstone
- East Meck High School addition pre-bid meeting hosted by Turner Construction
- Bain Elementary Relief outreach hosted by Metcon Construction
- Construction Manager at Risk request for qualifications pre-proposal meeting

Workforce Development:

Team members met virtually with community partners and construction management firms. Many expressed they will be participating in the Mayor's Youth Employment Program. The program provides career and professional development experiences to eligible and accepted youth through part-time internships. Students will participate in daily operations of a work environment related to the student's career interest. The program integrates knowledge and theory in the classroom with an emphasis on meaningful on-the-job experience. The Office of Diversity and Inclusion will provide internships for two students again this summer. For more information about the program visit: www.charlottenc.gov/youth.

Messer Construction shared the successful relationship they have had with the ROC Program through the three components to prepare high school students to successfully meet the needs of industry partners. The program focuses on academics, hands-on construction skills training and work-based learning. Messer has worked closely with CMS graduate Justice Taylor over the past two years by first providing an internship while a student in high school and later hiring as a full-time employee making over \$15 hour with benefits.

Video of Justice's story: <https://www.youtube.com/watch?v=i7Lx376a7RQ&feature=youtu.be>. For more information about the ROC Program: <https://www.roccharlotte.org/>

Charlotte-Mecklenburg Schools is collaborating with RJ Leeper Construction to provide a workforce development workshop to assist construction managers on leveraging resource partners to provide a pipeline from training programs to participants being hired, best practices in off-site opportunities, tracking/reporting and building trade partner relationships. The workshop will be held on February 10, 2021 at 10:00 a.m. via Zoom. Over the next month, team members will continue to work with contractors interested in bidding on the upcoming school projects utilizing various virtual tools to communicate. Contractors are encouraged to review bid advertisements in Charlotte Observer and register as a vendor on the North Carolina Interactive Purchasing System for notification of the various opportunities.

BOND PROGRESS SUMMARY As of January 2021

Funding Source and Value		Amount Committed/Pending	Amount Paid to Date	Amount Expended This Period
'13 Bond	\$301,699,770	\$289,485,519	\$287,890,252	\$1,588,302
'17 Bond	\$1,019,279,985	\$549,868,362	\$269,007,877	\$21,193,314
Grand Total	\$1,320,979,755	\$839,353,881	\$556,898,129	\$22,781,616

UPCOMING MAJOR CONSTRUCTION PROCUREMENT DATES *Three Month Look Ahead*

<u>School Name</u>	<u>Bid Dates*</u>
East Mecklenburg <i>(Bids managed by Turner)</i>	February 2021
New ES (Bain, Lebanon, Piney Grove Relief) (17) <i>(Bids managed by Metcon)</i>	March 2021
CTE projects (17) at Harding, South Mecklenburg and Olympic	March 2021

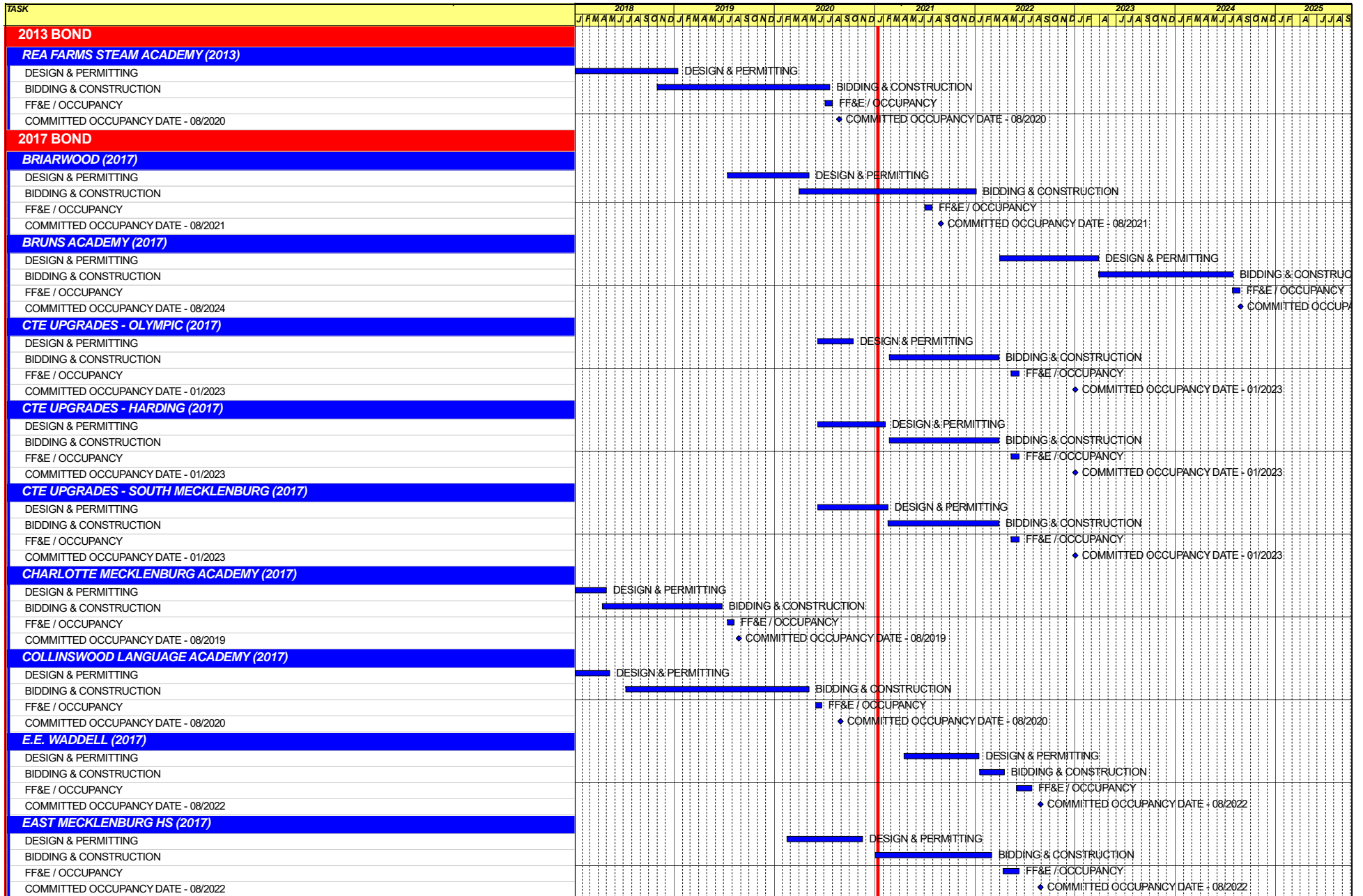
** NOTE: Work In Progress...Dates Subject to Change.*

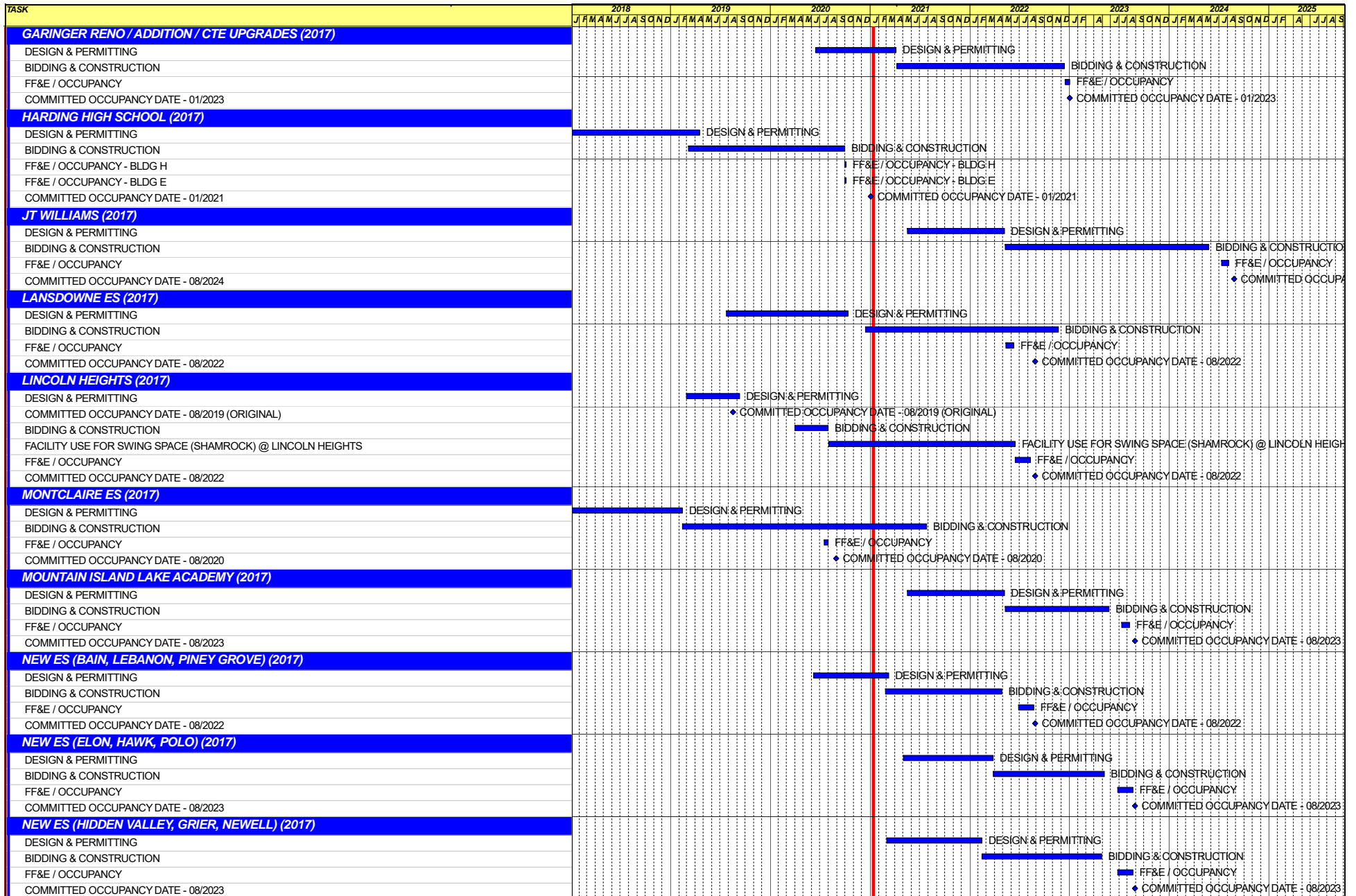
SWING SPACE UTILIZATION

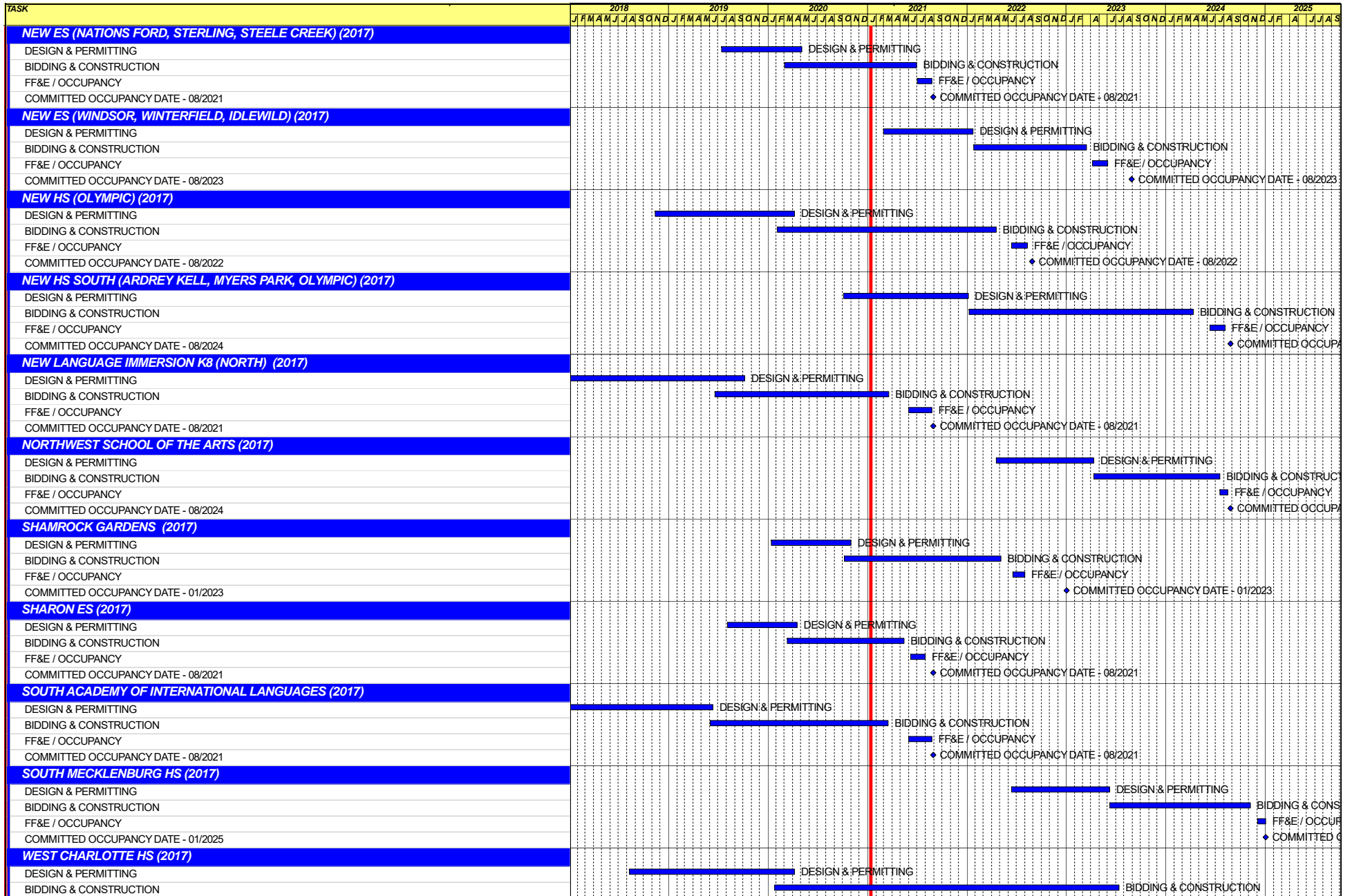
Creating a temporary space for students and staff to occupy during construction on a school’s campus has proven to be beneficial to the project’s schedule and cost and overall safety and efficiency of school operations. When the renovation or expansion of a facility is performed and the facility must remain functionally operational, there are benefits to the owner in using swing space.

We have successfully utilized both onsite and offsite swings. The most desirable swings are “offsite” ones. Onsite swing using mobiles or modulars, likewise has been successfully used. The following is a summary of current swing options planned or in use.

<u>School</u>	<u>No. of Mobiles/Relocation Site</u>	<u>Status (From – To)</u>
Shamrock	Lincoln Heights	August 2020 – August 2022







TASK	2018				2019				2020				2021				2022				2023				2024				2025							
FF&E / OCCUPANCY	J	F	M	A	M	J	J	A	S	O	N	D	J	F	M	A	M	J	J	A	S	O	N	D	J	F	M	A	M	J	J	A	S	O	N	D
COMMITTED OCCUPANCY DATE - 08/2022																																				
WEST MECK HS GYM (2017)																																				
DESIGN & PERMITTING																																				
BIDDING & CONSTRUCTION																																				
FF&E / OCCUPANCY																																				
COMMITTED OCCUPANCY DATE - 08/2021																																				

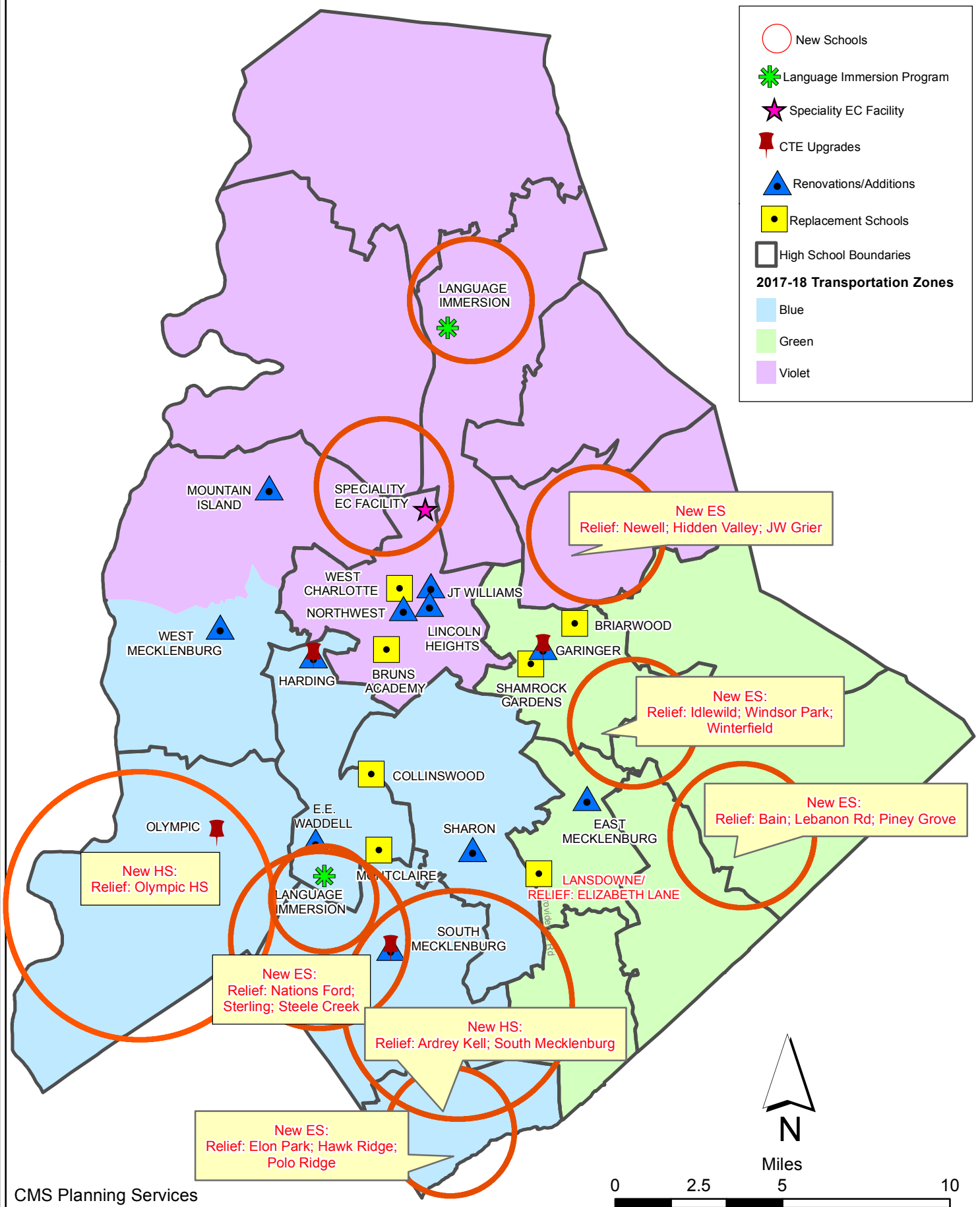
Capital Improvements Program
Projects in Design or Under Construction

School	Architect	General Contractor/CM
Projects In Design		
CTE (Harding, Olympic, South) (17)	MPS	Branch Brownstone
East Mecklenburg High School (17)	Morris Berg	Turner Construction
Garinger Addition/Renovation & CTE (17)	LS3P	Balfour Beatty
Lansdowne Elementary School Replacement (17)	Perkins Eastman	Edifice, Inc.
Lincoln Heights Repurpose (17)	Neighboring Concepts	TBD
New ES (Bain, Lebanon Rd, Piney Grove) (17)	FWA	Metcon
New HS (South, Ardrey) (17)	Ratio	Messer
Shamrock Gardens Elementary School Replacement (17)	Little Diversified	Rodgers-Holt Brothers
New ES Hidden Valley, JW Grier, Newell (17)	ADW	Edifice, Inc.
Projects in Bid/Award/Construction Phase		
Briarwood Elementary School Replacement (17)	ADW	New Atlantic
K-8 Language Immersion North (17)	ADW	New Atlantic
South Academy of International Languages (17)	FWA	Messer
Montclair Elementary School (17)	WHN	Messer
New ES (Nations Ford, Sterling, Steele Creek) (17)	FWA	Metcon
New High School (Olympic Relief) (17)	Little Diversified	Edifice, Inc.
Sharon Elementary School (17)	Clark Nexsen	Samet
West Charlotte High School (17)	LS3P	Rodgers-Holt Brothers
West Mecklenburg Gym (17)	Moseley	Barnhill/DA Everett

Capital Improvements Program
Projects Substantially Completed/Closed *

School	Turnover Year	Architect	General Contractor
Collinswood Language Academy (17)	Aug-20	Perkins Eastman	Turner Construction
Harding High School Renovation (17)	Aug-20	SFLA	Barnhill Contracting
Rea Farms STEAM Academy (13)	Aug-20	Little Diversified	Balfour Beatty
Ashley Park K-8 Conversion (13)	Aug-19	ADW	Turner Construction
Druid Hills K-8 Conversion (13)	Aug-19	ADW	Edifice, Inc.
Selwyn Elementary (13)	Aug-19	Clark Nexsen	Balfour Beatty
Charlotte Mecklenburg Academy (17)	Aug-19	KSQ	Edifice, Inc.
Davidson K-8 (13)	Aug-19	Little Diversified	Gilbane
CTE - North Mecklenburg High (13)	Aug-19	LS3P	Shiel Sexton
CTE - Garinger (13)	Mar-19	LS3P	Hostetter & Son
CTE - Independence (13)	Mar-19	LS3P	D.E. Brown
CTE - West Mecklenburg (13)	Mar-19	LS3P	Hostetter & Son
Charlotte East Language Academy (13)	Aug-18	Morris Berg	Edifice, Inc
Myers Park High School Phase 3 (13)	Aug-18	Boomerang Design	BE&K
Northridge Middle (13)	Aug-18	Morris Berg	Barnhill Contracting
Myers Park High Bldg 2 (13)	Feb-18	Boomerang Design	BE&K
East Mecklenburg High Addition (13)	Jan-18	Bergman (fna Gantt Huberman)	Edifice, Inc.
J.M. Alexander Middle (13)	Aug-17	FWA Group	Balfour Beatty
Northwest School of the Arts Renovation (13)	Aug-17	Moseley	Turner Construction
Renaissance West STEAM Academy (13)	Aug-17	Little Diversified	Rodgers Construction
South Mecklenburg High Addition (13)	Jul-17	SFLA	Barnhill Contracting
Myers Park High Bldg 1 (13)	Sep-16	Boomerang	KBR
Statesville Road Elementary (13)	Aug-16	ADW	JE Dunn
Nations Ford Elementary (13)	Aug-16	Wash Hatem Nelson	Messer Construction
Olympic High Addition (13)	Aug-16	McMillan, Pazdan, Smith	Turner Construction
Lawrence Orr Elementary (07)	Aug-15	Cort Architectural Group	DH Griffin/Metcon
Parkside Elementary (07)	Aug-15	Wash Hatem Nelson	Clancy & Theys
Hawthorne High Renovations (07)	Aug-15	Morris-Berg	Balfour Beatty
Newell Elementary (07)	Aug-15	Perkins Eastman	New Atlantic Contracting
Ranson Middle (07)	Aug-15	Morris-Berg	Edifice, Inc.
Vance High	Jan-15	LS3P	Matthews Construction Co., Inc.
Garinger High - Renovations/Addition	Aug-14	Adams Group Architects	Turner Construction
Olympic High - Stadium	Aug-14	Site Solutions	Turner Construction
West Mecklenburg High - Stadium	Aug-14	Site Solutions	Turner Construction
Collinswood - Indoor Air Quality	Aug-14	PEA	The Bowers Group
Lansdowne - Indoor Air Quality	Aug-14	AeroRaq	Tyler 2
McKee Road - Indoor Air Quality	Aug-14	McCracken & Lopez	Godfrey Construction
Garinger High - Track & Field	Jul-14	Site Solutions	Turner Construction
Independence High - Gym	Jun-14	Shook Kelly	Shelco, Inc. (CM)
Palisades Park Elementary	May-14	Wash Hatem Nelson	Clancy & Theys
East Mecklenburg High Auditorium	Jan-14	Gantt Huberman Associates	Godfrey Construction Co., Inc.
Pineville Elementary	Aug-13	Cort Architectural Group	Beam Construction Co., Inc.
Bain Elementary	Aug-13	ADW	Edison Foard
Grand Oak Elementary	Aug-13	ADW	Matthews Construction Co., Inc.
McClintock Middle	Aug-13	FWA Group	Shelco, Inc.
Sedgefield Elementary Demolition	Oct-12	Cort Architectural Group	EHG, LLC
Alexander Graham Middle Gym Reno	Aug-12	MBAJ Architecure	Edison Foard
First Ward - Demolition & Bus lot	Aug-12	MBAJ Architecure	T.K. Browne
South Meck High Parking Lot Renovation	Aug-12	Little Diversified	Sorenson Gross
Cochrane Middle - Kitchen	Aug-11	MBAJ Architecure	Sorenson Gross
Hough High	Aug-10	Little Diversified	Rodgers Construction
Rocky River High	Aug-10	Little Diversified	Balfour Beatty

CMS Capital Improvement Plan 2017 Bond Projects



PROJECT STATUS REPORT



Monthly Project Status 2017 Bond Summary January 2021

Project	Current Project Estimate	Project Scope	** Occupy On	Design Phase	Construction Progress	Project Status
Briarwood Elementary School (17)	\$ 31,962,730	45-classroom replacement facility; replaces school built in 1956.	August 2021	Complete	41 %	The construction manager for the Briarwood Elementary replacement school (17) project focused on completing the dry-in of the building. Roofing installations were completed on the two-story building and began on the administration building. The mason mobilized the spray foam contractor while focusing on the interior CMU walls and brick veneer where available. Interior and exterior metal stud installation continued throughout the building. Overhead and in wall mechanical, electrical and plumbing activities continued throughout. The site work contractor focused on the bus entry drive. Upon completion, demolition and remaining site work will commence and be completed in 2022.
Bruns Academy (17)	\$ 39,784,927	New 45-classroom elementary school (K-5); replaces old school built in 1969.	August 2024	Not Started	0 %	This project is scheduled to start design Spring 2022.

Monthly Project Status
2017 Bond Issues January 2021

Project	Current Project Estimate	Project Scope	** Occupy On	Design Phase	Construction Progress	Project Status
Career and Technology Education (17)	\$ 10,159,765	Phase I CTE upgrades at Olympic, Harding, Garinger and South Mecklenburg.	January 2023	Construction Documents	0 %	The CTE projects (17) at Harding, South Mecklenburg and Olympic continue to progress with amendments to the construction documents to comply with LUESA building permit review comments. The construction manager has started their pre-qualification efforts with the subcontractor community. The bid period is scheduled to start in late February 2021 and is scheduled for board approval in May 2021. The Harding project consist of renovations to existing classrooms in the auditorium building to develop a suite of technology classrooms. The project at Olympic includes electrical up fits to the existing carpentry lab which expands the curriculum to include demonstration learning booths for plumbing and electrical trades. The project at South Mecklenburg consists of renovating the old kitchen area into a culinary arts lab and classroom.
Charlotte-Mecklenburg Academy (17)	\$ 18,079,506	New EC school located on the old Statesville Elementary School site.	August 2019	Complete	100 %	Project is complete.
Collinswood Language Academy (17)	\$ 42,272,540	New 63-classroom K-8 facility on the site of the Smith Family Center.	August 2020	Complete	100 %	Project is complete.
E.E. Waddell (17)	\$ 5,137,367	Repurpose current E.E. Waddell to reopen as a magnet high school.	August 2022	Not Started	0 %	Planning in preparation for design start in 2021.
East Mecklenburg High School (17)	\$ 15,058,594	This project will provide for the design, and construction for a new classroom building.	August 2022	Construction Documents	0 %	The East Mecklenburg High School (17) project has progressed into the bidding phase and is scheduled for board approval in late March 2021.

Monthly Project Status
2017 Bond Summary 2021

Project	Current Project Estimate	Project Scope	** Occupy On	Design Phase	Construction Progress	Project Status
Garinger High School (17)	\$ 14,486,979	Project includes the design and construction for renovations of 300 building and a 16 classroom addition.	January 2023	Construction Documents	0 %	The Garinger High School Addition/Renovation (17) and CTE projects continue to progress in the construction document design phase. The architect/civil engineer have submitted civil drawings for City Engineering for review and approval. The construction manager has started preparations for developing pre-qualification criteria for the subcontractors interested in bidding this project. The project's scope consist of a 2-story building with 16 classrooms. The design also includes modifications in the existing 300 building.
Harding High School (17)	\$ 14,530,263	Renovation of the kitchen, cafeteria, existing gym (aux) and the addition of a new gym.	August 2020	Complete	99 %	The construction manager is finalizing punch list and commissioning items and working toward final completion and financial reconciliation.
JT Williams (17)	\$ 15,732,600	Project includes building renovations to J.T. Williams Montessori magnet.	August 2024	Not Started	0 %	Design is scheduled to start summer of 2021.
Lansdowne Elementary School (17)	\$ 37,128,834	New 45-classroom school; replaces old school built in 1959 and relieve crowding at Elizabeth Lane ES.	August 2022	Construction Documents	0 %	The construction manager for the Lansdowne Elementary School Replacement (17) project has completed the bidding phase and continues to analyze bids and prepare documents for the GMP change order. The board approval is scheduled to occur in February 2021.
Lincoln Heights Elementary School (17)	\$ 4,588,675	Repurpose and reopen as magnet school.	August 2022	Construction Documents	0 %	Shamrock Gardens will be utilizing the Lincoln Heights Elementary building as swing space August 2020 - August 2022. Playgrounds were replaced and new digital signage was installed summer 2020.
Montclair Elementary School (17)	\$ 28,559,390	New 45-classroom replacement facility replacing school built in 1958.	August 2020	Complete	93 %	The construction manager for the Montclair Elementary School (17) project removed the excess soil from the old building area and final graded for the bus lot. Underground electrical conduit was installed for the exterior light poles. Stone base for the bus lot was installed. The new 45-classroom elementary school building has been occupied by the Principal and staff and is available for students as scheduled. Demolition and remaining site work will be completed in spring of 2021.
Mountain Island Lake Academy (17)	\$ 10,488,400	K-8 Phase 2 - New gymnasium and specialty classrooms.	August 2023	Not Started	0 %	Project design to be initiated in the spring of 2021.

Monthly Project Status
2017 Bond Summary 2021

Project	Current Project Estimate	Project Scope	** Occupy On	Design Phase	Construction Progress	Project Status
New Elementary School (Bain, Lebanon, Piney Grove) (17)	\$ 31,455,951	New 45-classroom elementary school; relieves crowding at Bain, Lebanon Road, Piney Grove.	August 2022	Construction Documents	0 %	The New Elementary School (Bain, Lebanon, Piney Grove Relief) (17) architect continues to finalize the construction documents. The construction manager continues with preparation of procurement documents and activities including pre-qualifications, advertisement, MWSBE outreach and bid manual preparation. Bids are to be received in March 2021 and is schedule to be taken to the board for approval prior to May 2021.
New Elementary School (Elon, Hawk Ridge, Polo Relief) (17)	\$ 43,476,676	New 45-classroom elementary school to relieve Elon, Hawk Ridge, Polo.	August 2023	Pre-Design	0 %	The New Elementary School (Elon, Hawk Ridge, Polo Relief) (17) architectural contract has been submitted for approval and upon completion the design will commence.
New Elementary School (Hidden Valley, JW Grier, Newell) (17)	\$ 34,697,022	New 45-classroom elementary school; relieves overcrowding at Hidden Valley, J.W. Grier, Newell.	August 2023	Pre-Design	0 %	The New Elementary School (Hidden Valley, JW Grier, Newell Relief) (17) project team kicked off the start of the design phase with the architect.
New Elementary School (Nations, Sterling, Steele Relief) (17)	\$ 31,572,550	New 45-classroom elementary school to relieve Nations Ford, Sterling, and Steele Creek.	August 2021	Complete	52 %	The New Elementary School (Nations, Sterling, Steele Creek Relief) (17) construction manager continued spray foam on the exterior walls followed by brick veneer. The building was dried in with the completion of the roof system, final terminations and remaining coping cap. Interior studs and CMU installation continued allowing in wall rough-ins to follow. Mechanical, electrical and plumbing rough-ins continued above ceiling and in walls. Drywall began on the first floor of the classroom building.
New Elementary School (Windsor, Winterfield, Idlewild Relief) (17)	\$ 37,197,022	New 45-classroom elementary school to relieve Windsor, Winterfield, and Idlewild ES.	August 2023	Not Started	0 %	The New Elementary School (Windsor, Winterfield, Idlewild Relief) (17) architectural contract has been submitted for approval and upon completion the design will commence. Due diligence for site acquisition continues.

Monthly Project Status
2017 Bond Summary 2021

Project	Current Project Estimate	Project Scope	** Occupy On	Design Phase	Construction Progress	Project Status
New High School (17) (Olympic Relief)	\$ 109,908,793	New 100 classroom high school; relieves crowding at Olympic High School.	August 2022	Complete	34 %	The construction manager for the New High School Olympic Relief (17) began structural steel for the east classroom building. The concrete slab was poured for the West classroom wing. Exterior metal studs were started on the administration building. The roof system was started on the kitchen/cafeteria building. Overhead rough-ins continued in areas that became available. The site work contractor graded and began stone base installation on the staff/visitor lot. The stadium concrete retaining wall footings were installed with the vertical wall started.
New High School (South, Ardrey) (17)	\$ 154,930,460	New high school to relieve South Mecklenburg, Ardrey Kell and Myers Park HS.	August 2024	Design Development	0 %	The New High School (South, Ardrey Relief) (17) architect has completed the schematic design phase and progressed into the design development phase (DD). The DD is scheduled for completion in late April 2021.
New K-8 School (North) (17)	\$ 43,359,367	New K-8 Language Immersion facility located on the old J.M. Alexander Middle School site.	August 2021	Complete	89 %	The New K-8 Language Immersion North (17) project has progressed into final finishes. The above ceiling inspections have been completed for the facility allowing ceiling tiles to be installed. Casework, doors and VCT flooring is also being installed throughout. The MEP trades are installing fixtures and devices. The gym floor and bleachers are complete and athletic striping will follow. School colors will be selected now that a Principal has been assigned. The site is also taking shape as areas are finalized and seeding and sod progresses. The Hambright Road improvements have been scheduled with local underground utility contractors to relocate existing lines as needed.
Northwest School of the Arts (17)	\$ 20,467,000	Replace classroom building built in 1952 and build classroom addition that supports program.	August 2024	Not Started	0 %	Project to be funded by the County in FY22, planning underway.
Shamrock Gardens Elementary School (17)	\$ 35,358,351	New 45-classroom replacement facility.	August 2022	Complete	3 %	The construction manager for the Shamrock Elementary School completed the demolition of the existing building and the removal of the concrete slabs. Grading operations started with the installation of the temporary detention basin.

Monthly Project Status
2017 Bond Summary 2021

Project	Current Project Estimate	Project Scope	** Occupy On	Design Phase	Construction Progress	Project Status
Sharon Elementary School (17)	\$ 9,475,862	Provide additional classroom capacity needed for anticipated growth.	August 2021	Complete	60 %	The construction manager for the Sharon Elementary School Building Addition (17) has installed the roof and the windows are being installed at classroom elevations. The brick veneer is now complete. Mechanical, electrical and plumbing overhead rough-ins are able to progress since the roof is dried in. The cafeteria expansion now has the brick veneer complete and window framing is progressing. The added parking at the front of the school was completed and turned over for use.
South Academy of International Languages (fka New K-8 School (South) (17)	\$ 42,959,367	New K-8 Language Immersion facility located on the old Nations Ford Elementary School site.	August 2021	Complete	91 %	The construction manager for the South Academy of International Languages (FNA New K-8 Language Immersion South (17) continued with the installation of the finishes throughout the building. Paint, flooring, casework, toilet partitions progressed well. The storefront materials arrived and installation was started. Mechanical, electrical and plumbing trim out continued with plumbing fixtures, receptacles, supply and return grills and faceplates. Exterior improvements continued with final landscaping sod, trees and bushes. The project is scheduled to be occupied August 2021.
South Mecklenburg High School (17)	\$ 15,622,927	Renovate/replace two classroom buildings built in 1958 to upgrade learning conditions.	January 2025	Not Started	0 %	Project to be funded by the County in FY22, planning underway.
West Charlotte High School (17)	\$ 109,977,166	New 100 classroom school to replace current facility built in 1954.	August 2022	Complete	30 %	The West Charlotte High School (17) construction manager has multiple trades working across the site and buildings. They continue to work from one end of the new building to the other with load bearing masonry and the installation of structural steel framing. Roof joists have been set in some areas allowing roofing to start. The in wall rough-ins continue as walls are placed and above ceiling rough-ins for mechanical and electrical have started. The plumber has also been busy with sanitary sewer and supply piping. The athletic buildings are also progressing with load bearing masonry walls. The site contractor is preparing the parking lot area for paving.

Monthly Project Status
 2017 Bond Summary 2021

Project	Current Project Estimate	Project Scope	** Occupy On	Design Phase	Construction Progress	Project Status
West Mecklenburg High School (17)	\$ 10,850,902	Renovate/replace gymnasium built in 1954.	August 2021	Complete	39 %	The West Mecklenburg High School Gym (17) construction manager has topped out the load bearing masonry in the new gym. This allowed the slab on grade at the main gym to be poured. The structural steel roof framing is being set. Overhead rough-ins for MEP will follow. The site contractor is working on the areas to be paved around the new gym.

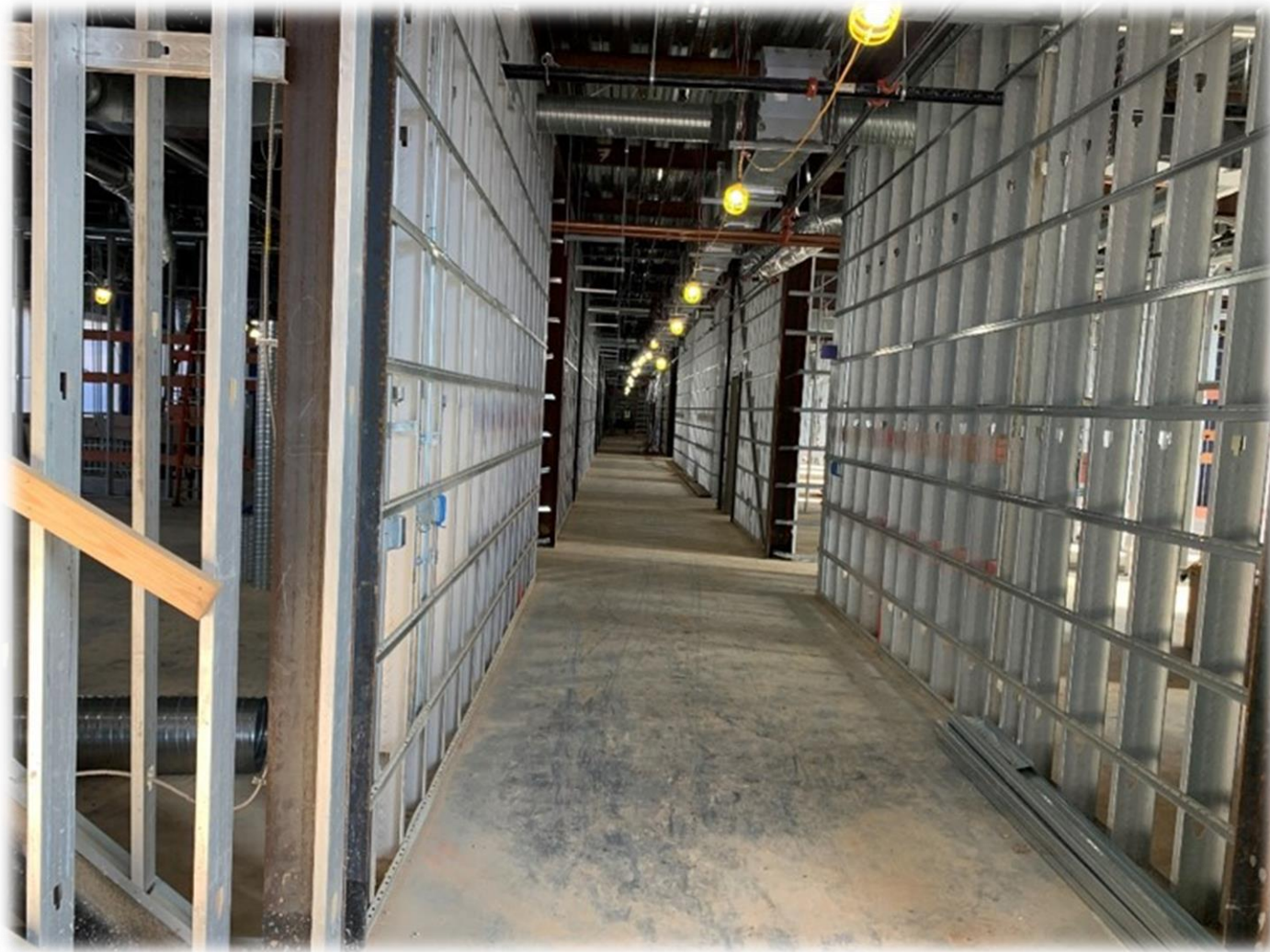
MONTHLY PROJECT PHOTOS

PROJECT PROGRESS PHOTOS



Briarwood Elementary School Replacement

PROJECT PROGRESS PHOTOS



Briarwood Elementary School Replacement

PROJECT PROGRESS PHOTOS



Briarwood Elementary School Replacement

PROJECT PROGRESS PHOTOS



Briarwood Elementary School Replacement

PROJECT PROGRESS PHOTOS



Montclair Elementary School Replacement



Montclair Elementary School Replacement



Montclair Elementary School Replacement

PROJECT PROGRESS PHOTOS



Montclair Elementary School Replacement

PROJECT PROGRESS PHOTOS



K-8 Language Immersion North

PROJECT PROGRESS PHOTOS



K-8 Language Immersion North

PROJECT PROGRESS PHOTOS



K-8 Language Immersion North

PROJECT PROGRESS PHOTOS



K-8 Language Immersion North

PROJECT PROGRESS PHOTOS



South Academy of International Languages
(fka K-8 Language Immersion South)

PROJECT PROGRESS PHOTOS



South Academy of International Languages
(fka K-8 Language Immersion South)

PROJECT PROGRESS PHOTOS



South Academy of International Languages
(fka K-8 Language Immersion South)

PROJECT PROGRESS PHOTOS



South Academy of International Languages
(fka K-8 Language Immersion South)

PROJECT PROGRESS PHOTOS



New High School Olympic Relief

PROJECT PROGRESS PHOTOS



New High School Olympic Relief

PROJECT PROGRESS PHOTOS



New High School Olympic Relief

PROJECT PROGRESS PHOTOS



New High School Olympic Relief

PROJECT PROGRESS PHOTOS



New High School Olympic Relief

PROJECT PROGRESS PHOTOS



West Charlotte High School Replacement

PROJECT PROGRESS PHOTOS



West Charlotte High School Replacement

PROJECT PROGRESS PHOTOS



West Charlotte High School Replacement



West Charlotte High School Replacement



West Charlotte High School Replacement

PROJECT PROGRESS PHOTOS



New Elementary School
(Nations Ford, Sterling, Steele Creek Relief)

PROJECT PROGRESS PHOTOS



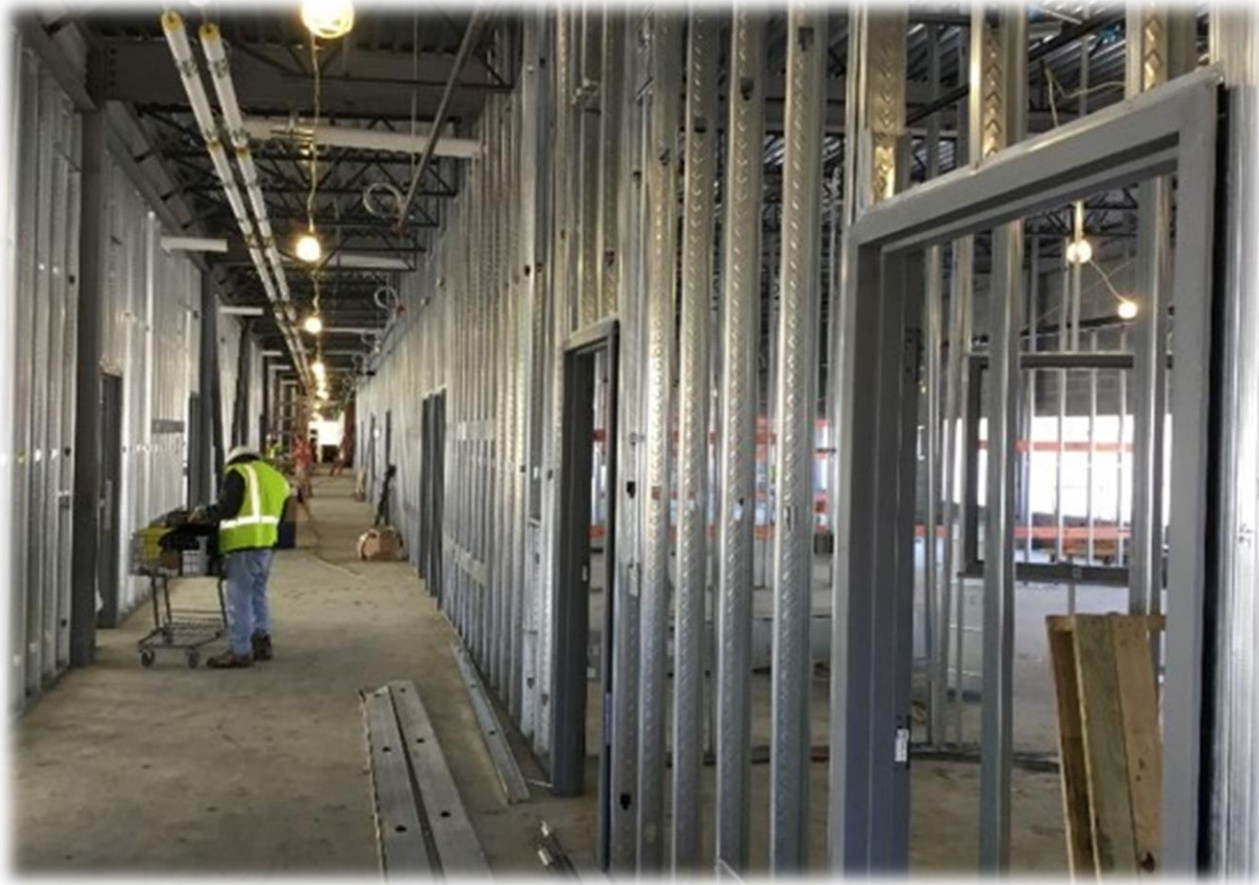
New Elementary School
(Nations Ford, Sterling, Steele Creek Relief)

PROJECT PROGRESS PHOTOS



New Elementary School
(Nations Ford, Sterling, Steele Creek Relief)

PROJECT PROGRESS PHOTOS



New Elementary School
(Nations Ford, Sterling, Steele Creek Relief)

PROJECT PROGRESS PHOTOS



Sharon Elementary School Addition

PROJECT PROGRESS PHOTOS



Sharon Elementary School Addition

PROJECT PROGRESS PHOTOS



Sharon Elementary School Addition

PROJECT PROGRESS PHOTOS



Sharon Elementary School Addition

PROJECT PROGRESS PHOTOS



West Mecklenburg High School Gym

PROJECT PROGRESS PHOTOS



West Mecklenburg High School Gym

PROJECT PROGRESS PHOTOS



West Mecklenburg High School Gym

PROJECT PROGRESS PHOTOS



West Mecklenburg High School Gym

PROJECT PROGRESS PHOTOS



Shamrock Gardens Elementary School

PROJECT PROGRESS PHOTOS



Shamrock Gardens Elementary School

PROJECT PROGRESS PHOTOS



Shamrock Gardens Elementary School

MWSBE PARTICIPATION REPORT

Contract Status Report - MWSBE Participation Commitments

Report Date 2/12/2021

Charlotte-Mecklenburg Schools

2/12/2021 12:50:56 PM

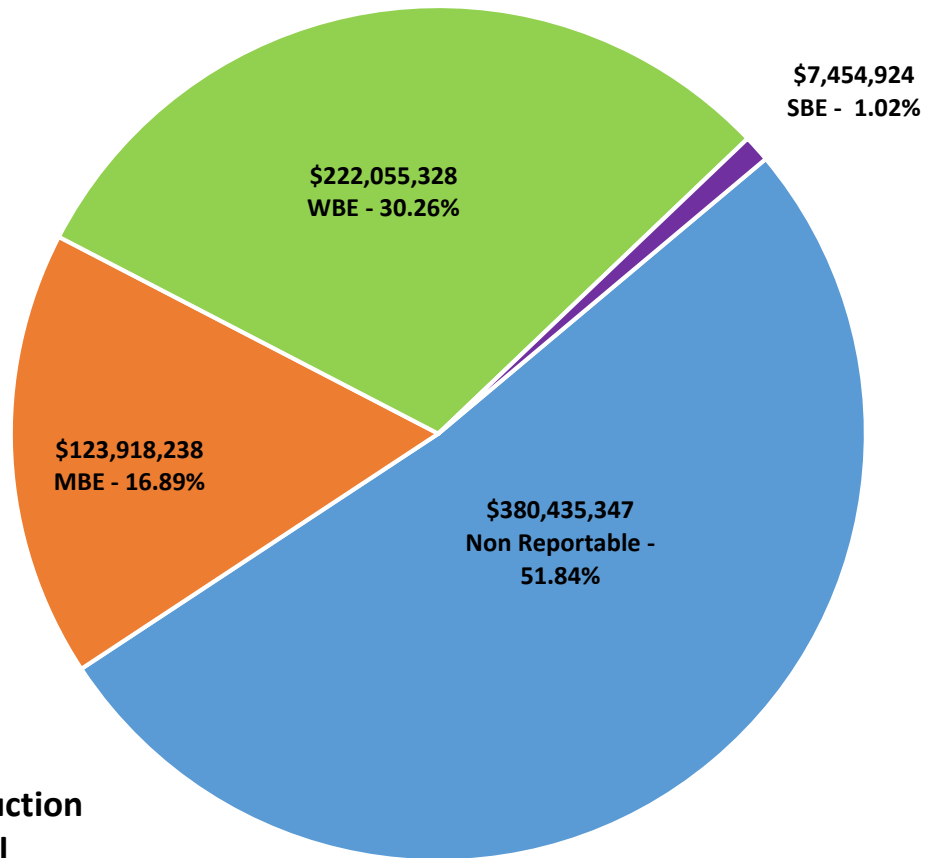
2013 & 2017 Bond Projects

January 2021 Monthly Bond Report

Facility	Contract Amount	African American MBE\$	%	Other MBE \$	%	Total MBE \$	%	Other WBE \$	%	Other SBE \$	%	Total	%
<u>Briarwood Elementary School (17)</u>	\$28,578,298	\$3,521,005	12.32%	\$2,326,100	8.14%	\$5,847,105	20.46%	\$1,111,985	3.89%	\$82,000	0.29%	\$7,041,090	24.64%
<u>Career and Technology Education (17)</u>	\$1,697,357	\$0	0.00%	\$0	0.00%	\$0	0.00%	\$0	0.00%	\$0	0.00%	\$0	0.00%
<u>Career and Technology Education Ph</u>	\$6,585,658	\$1,237,360	18.79%	\$36,997	0.56%	\$1,274,357	19.35%	\$808,886	12.28%	\$339,141	5.15%	\$2,422,385	36.78%
<u>Charlotte East Language Academy</u>	\$27,066,783	\$216,193	0.80%	\$1,704,453	6.30%	\$1,920,646	7.10%	\$10,074,150	37.22%	\$93,027	0.34%	\$12,087,823	44.66%
<u>Charlotte-Mecklenburg Academy (17)</u>	\$17,035,852	\$198,536	1.17%	\$1,029,192	6.04%	\$1,227,728	7.21%	\$872,755	5.12%	\$13,200	0.08%	\$2,113,683	12.41%
<u>Collinswood Language Academy (17)</u>	\$38,721,550	\$412,763	1.07%	\$1,786,047	4.61%	\$2,198,810	5.68%	\$11,144,362	28.78%	\$257,800	0.67%	\$13,600,972	35.13%
<u>Davidson K-8 Conversion (13)</u>	\$12,301,635	\$467,470	3.80%	\$1,103,884	8.97%	\$1,571,354	12.77%	\$4,470,904	36.34%	\$156,204	1.27%	\$6,198,462	50.39%
<u>East Mecklenburg High School (13)</u>	\$8,618,409	\$126,151	1.46%	\$1,009,766	11.72%	\$1,135,917	13.18%	\$2,600,065	30.17%	\$488,468	5.67%	\$4,224,450	49.02%
<u>East Mecklenburg High School (17)</u>	\$1,236,390	\$0	0.00%	\$107,650	8.71%	\$107,650	8.71%	\$12,500	1.01%	\$2,871	0.23%	\$123,021	9.95%
<u>Garinger High School (17)</u>	\$169,565	\$0	0.00%	\$37,000	21.82%	\$37,000	21.82%	\$20,525	12.10%	\$0	0.00%	\$57,525	33.93%
<u>Harding High School (17)</u>	\$12,906,772	\$1,504,505	11.66%	\$310,356	2.40%	\$1,814,862	14.06%	\$3,846,831	29.80%	\$176	0.00%	\$5,661,869	43.87%
<u>J.M. Alexander Middle School (13)</u>	\$27,252,876	\$3,390,829	12.44%	\$1,320,408	4.85%	\$4,711,237	17.29%	\$8,526,763	31.29%	\$244,708	0.90%	\$13,482,708	49.47%
<u>Lansdowne Elementary School (17)</u>	\$2,441,529	\$14,000	0.57%	\$104,400	4.28%	\$118,400	4.85%	\$45,105	1.85%	\$223,625	9.16%	\$387,130	15.86%
<u>Lincoln Heights Elementary School (1</u>	\$432,426	\$92,274	21.34%	\$18,800	4.35%	\$111,074	25.69%	\$0	0.00%	\$74,503	17.23%	\$185,577	42.92%
<u>Montclair Elementary School (17)</u>	\$26,133,633	\$3,096,412	11.85%	\$2,142,645	8.20%	\$5,239,057	20.05%	\$5,279,462	20.20%	\$390,227	1.49%	\$10,908,746	41.74%
<u>Myers Park High School (13)</u>	\$9,367,664	\$829,502	8.85%	\$366,413	3.91%	\$1,195,915	12.77%	\$2,557,565	27.30%	\$440,712	4.70%	\$4,194,192	44.77%
<u>Nations Ford Elementary School (at</u>	\$17,312,559	\$1,965,714	11.35%	\$765,473	4.42%	\$2,731,187	15.78%	\$2,296,041	13.26%	\$772,457	4.46%	\$5,799,685	33.50%
<u>New Elementary School (Bain, Leban</u>	\$1,522,955	\$10,000	0.66%	\$35,500	2.33%	\$45,500	2.99%	\$0	0.00%	\$84,390	5.54%	\$129,890	8.53%
<u>New Elementary School (Elon, Hawk</u>	\$349,690	\$0	0.00%	\$0	0.00%	\$0	0.00%	\$45,490	13.01%	\$0	0.00%	\$45,490	13.01%
<u>New Elementary School (Hidden Vall</u>	\$1,703,890	\$0	0.00%	\$0	0.00%	\$0	0.00%	\$0	0.00%	\$300	0.02%	\$300	0.02%
<u>New Elementary School (Nations, Ste</u>	\$26,412,893	\$772,455	2.92%	\$19,833,781	75.09%	\$20,606,236	78.02%	\$4,067,896	15.40%	\$238,129	0.90%	\$24,912,261	94.32%
<u>New Elementary School (Windsor, W</u>	\$216,000	\$11,000	5.09%	\$0	0.00%	\$11,000	5.09%	\$0	0.00%	\$0	0.00%	\$11,000	5.09%
<u>New High School (17) (Olympic Relief</u>	\$98,155,492	\$14,826,631	15.11%	\$4,093,400	4.17%	\$18,920,031	19.28%	\$7,232,870	7.37%	\$666,450	0.68%	\$26,819,351	27.32%
<u>New High School (South, Ardrey) (17)</u>	\$5,983,441	\$13,500	0.23%	\$96,500	1.61%	\$110,000	1.84%	\$50,000	0.84%	\$1,125	0.02%	\$161,125	2.69%
<u>New K-8 School (North) (17)</u>	\$37,962,816	\$1,964,711	5.18%	\$1,909,480	5.03%	\$3,874,191	10.21%	\$4,583,546	12.07%	\$418,949	1.10%	\$8,876,686	23.38%

Facility	Contract Amount	African American MBE\$	%	Other MBE \$	%	Total MBE \$	%	Other WBE \$	%	Other SBE \$	%	Total	%
<u>Northridge Middle School (13)</u>	\$4,989,570	\$69,874	1.40%	\$804,803	16.13%	\$874,677	17.53%	\$621,842	12.46%	\$50,012	1.00%	\$1,546,531	31.00%
<u>Northwest School of the Arts (13)</u>	\$12,265,376	\$2,347,147	19.14%	\$157,238	1.28%	\$2,504,385	20.42%	\$657,555	5.36%	\$63,936	0.52%	\$3,225,875	26.30%
<u>Oakhurst STEAM Magnet ES/Starmo</u>	\$2,818,260	\$728,788	25.86%	\$143,940	5.11%	\$872,728	30.97%	\$918,979	32.61%	\$0	0.00%	\$1,791,707	63.57%
<u>Olympic High School (13)</u>	\$8,765,306	\$1,228,344	14.01%	\$76,095	0.87%	\$1,304,439	14.88%	\$1,970,523	22.48%	\$261,745	2.99%	\$3,536,707	40.35%
<u>PK8 Conversion Phase II (13)</u>	\$18,122,512	\$380,926	2.10%	\$1,089,238	6.01%	\$1,470,163	8.11%	\$3,155,078	17.41%	\$58,952	0.33%	\$4,684,194	25.85%
<u>Rea Farms STEAM Academy (13)</u>	\$32,172,264	\$570,852	1.77%	\$3,445,385	10.71%	\$4,016,237	12.48%	\$7,535,924	23.42%	\$196,500	0.61%	\$11,748,661	36.52%
<u>Renaissance West STEAM Academy (</u>	\$28,471,160	\$909,934	3.20%	\$3,695,010	12.98%	\$4,604,943	16.17%	\$21,786,637	76.52%	\$63,425	0.22%	\$26,455,005	92.92%
<u>Selwyn Elementary School (13)</u>	\$4,407,067	\$288,360	6.54%	\$199,917	4.54%	\$488,277	11.08%	\$1,026,433	23.29%	\$26,792	0.61%	\$1,541,503	34.98%
<u>Shamrock Gardens Elementary Scho</u>	\$28,114,268	\$1,788,332	6.36%	\$1,431,447	5.09%	\$3,219,779	11.45%	\$22,595,506	80.37%	\$281,734	1.00%	\$26,097,019	92.82%
<u>Sharon Elementary School (17)</u>	\$8,394,752	\$259,494	3.09%	\$360,887	4.30%	\$620,381	7.39%	\$1,174,103	13.99%	\$205,317	2.45%	\$1,999,801	23.82%
<u>South Academy of International Lang</u>	\$37,531,624	\$5,077,406	13.53%	\$2,159,095	5.75%	\$7,236,501	19.28%	\$9,880,960	26.33%	\$309,838	0.83%	\$17,427,300	46.43%
<u>South Mecklenburg High School (13)</u>	\$15,305,748	\$2,233,506	14.59%	\$1,006,044	6.57%	\$3,239,550	21.17%	\$1,935,863	12.65%	\$41,943	0.27%	\$5,217,355	34.09%
<u>Statesville Road ES (13)</u>	\$17,529,185	\$392,306	2.24%	\$1,207,646	6.89%	\$1,599,952	9.13%	\$4,503,562	25.69%	\$81,988	0.47%	\$6,185,502	35.29%
<u>West Charlotte High School (17)</u>	\$94,938,900	\$15,116,116	15.92%	\$1,243,165	1.31%	\$16,359,281	17.23%	\$72,574,887	76.44%	\$544,572	0.57%	\$89,478,740	94.25%
<u>West Mecklenburg High School (17)</u>	\$9,871,710	\$279,936	2.84%	\$417,752	4.23%	\$697,688	7.07%	\$2,069,774	20.97%	\$279,710	2.83%	\$3,047,172	30.87%
Grandtotal	\$733,863,836	\$66,342,330	9.04%	\$57,575,908	7.85%	\$123,918,238	16.89%	\$222,055,328	30.26%	\$7,454,924	1.02%	\$353,428,489	48.16%

MWSBE Participation 2013 & 2017 Bond Projects



**Design and Construction
Contract Total**

PROJECT CONTROLS

CHARLOTTE-MECKLENBURG BOARD OF EDUCATION
2013 BOND SERIES-CAPITAL IMPROVEMENT PROGRAM
BUDGET STATUS REPORT

	Original Project Budget	Current Project Budget	Committed Amount	Approved Change Orders	Total Committed	Pending Commitments	To Be Committed	Prev Paid To Date	Paid To Date	Balance To Complete	Monthly Expenditure
	(A)	(B)	(C)	(D)	(E)=C+D	(F)	(G)=(B-E-F)	(H)	(I)	(J)=(B-I)	(K)=(I-H)
<u>A. REPLACEMENT & RENOVATIONS</u>											
1 Career & Technology Education Institutes Phase 1:	\$8,640,000	\$18,256,861	\$7,032,935	\$333,080	\$7,366,015	\$0	\$10,890,846	\$7,323,247	\$7,329,247	\$10,927,614	\$6,000
2 Davidson K-8 Conversion	\$9,500,000	\$13,610,000	\$2,130,689	\$11,364,591	\$13,495,280	\$0	\$114,720	\$13,415,208	\$13,432,125	\$177,875	\$16,917
3 J.M. Alexander Middle Replacement	\$30,672,000	\$29,845,539	\$4,502,518	\$25,343,021	\$29,845,539	\$0	\$0	\$29,845,539	\$29,845,539	\$0	\$0
4 Nations Ford Elementary Replacement	\$19,440,000	\$19,231,603	\$3,958,869	\$15,272,733	\$19,231,603	\$0	\$0	\$19,231,604	\$19,231,604	\$0	\$0
5 Northwest School of the Arts	\$12,420,000	\$12,868,718	\$2,047,917	\$10,820,801	\$12,868,718	\$0	\$0	\$12,868,719	\$12,868,719	\$0	\$0
6 Oakhurst STEAM Magnet Elementary/Starmount	\$5,940,000	\$5,407,812	\$3,471,397	\$1,936,415	\$5,407,812	\$0	\$0	\$5,407,812	\$5,407,812	\$0	\$0
7 Pre-K-8 Conversions Phase II: Ashley Park/ Bruns	\$24,732,000	\$19,791,457	\$4,167,669	\$15,563,538	\$19,731,207	\$0	\$60,250	\$19,695,490	\$19,695,490	\$95,967	\$0
8 Selwyn Elementary	\$2,592,000	\$4,687,004	\$744,378	\$3,881,906	\$4,626,284	\$0	\$60,720	\$4,624,831	\$4,624,831	\$62,172	\$0
9 Statesville Road Elementary	\$20,340,000	\$20,648,510	\$5,081,473	\$15,567,037	\$20,648,509	\$0	\$0	\$20,648,509	\$20,648,509	\$0	\$0
Total Replacement & Renovations	\$134,276,000	\$144,347,503	\$33,137,845	\$100,083,122	\$133,220,967	\$0	\$11,126,536	\$133,060,959	\$133,083,875	\$11,263,628	\$22,917
<u>B. RESPONSE TO ENROLLMENT GROWTH</u>											
1 East Mecklenburg High Addition	\$12,744,000	\$10,988,287	\$3,369,684	\$7,618,603	\$10,988,287	\$0	\$0	\$10,988,287	\$10,988,287	\$0	\$0
2 Myers Park High Addition	\$22,248,000	\$11,070,580	\$1,207,493	\$9,833,448	\$11,040,942	\$0	\$29,639	\$11,040,941	\$11,040,941	\$29,639	\$0
3 Northridge Middle Addition	\$6,448,000	\$6,366,170	\$2,114,306	\$4,251,865	\$6,366,171	\$0	\$0	\$6,366,171	\$6,366,171	\$0	\$0
4 Olympic High Addition/Renovation	\$8,964,000	\$8,947,310	\$2,002,694	\$6,944,615	\$8,947,310	\$0	\$0	\$8,947,310	\$8,947,310	\$0	\$0
5 South Mecklenburg High Addition	\$18,360,000	\$16,307,355	\$2,922,282	\$13,385,073	\$16,307,355	\$0	\$0	\$16,307,355	\$16,307,355	\$0	\$0
6 Charlotte East Language Academy (FKA -New Lang	\$30,376,000	\$31,456,414	\$5,740,242	\$25,692,685	\$31,432,927	\$0	\$23,487	\$31,387,929	\$31,387,929	\$68,485	\$0
7 New STEAM K-8 (Relief for Ballantyne, Elon Park,	\$31,376,000	\$40,476,000	\$9,174,636	\$30,214,465	\$39,389,101	\$52,310	\$1,034,589	\$36,504,047	\$38,069,432	\$2,406,568	\$1,565,385
8 Renaissance West STEAM Academy (FKA New Pre-	\$30,376,000	\$31,740,150	\$5,667,328	\$26,072,822	\$31,740,150	\$0	\$0	\$31,698,952	\$31,698,952	\$41,199	\$0
Total Response to Enrollment Growth	\$160,892,000	\$157,352,267	\$32,198,666	\$124,013,576	\$156,212,243	\$52,310	\$1,087,715	\$153,240,992	\$154,806,377	\$2,545,891	\$1,565,385
<u>C. CONTINGENCY</u>											
	\$0	\$0	\$0	\$0	\$0	\$0	\$0	\$0	\$0	\$0	\$0
Total Contingency	\$0	\$0	\$0	\$0	\$0	\$0	\$0	\$0	\$0	\$0	\$0
TOTAL LOCAL BOND PROGRAM	\$295,168,000	\$301,699,771	\$65,336,511	\$224,096,698	\$289,433,210	\$52,310	\$12,214,251	\$286,301,950	\$287,890,252	\$13,809,518	\$1,588,302

Original project estimated costs approved by the Board Of Education on July 23, 2013 and approved by the voters of Mecklenburg County on November 5, 2013.

Note: Mecklenburg County's appropriated interest from COPS to increase funding for the 2013 Bond Program.

CHARLOTTE-MECKLENBURG BOARD OF EDUCATION
2017 BOND SERIES-CAPITAL IMPROVEMENT PROGRAM
BUDGET STATUS REPORT

	Original Project Budget	Current Project Budget	Committed Amount	Approved Change Orders	Total Committed	Pending Commitments	To Be Committed	Prev Paid To Date	Paid To Date	Balance To Complete	Monthly Expenditure
	(A)	(B)	(C)	(D)	(E)=C+D	(F)	(G)=(B-E-F)	(H)	(I)	(J)=(B-I)	(K)=(I-H)
<u>A. REPLACEMENT & RENOVATIONS</u>											
1 Briarwood Elementary *	\$29,091,619	\$31,962,730	\$4,934,747	\$26,554,962	\$31,489,709	\$137,116	\$335,905	\$7,831,239	\$11,037,118	\$20,925,612	\$3,205,879
2 Bruns Academy Replacement	\$34,207,808	\$39,784,927	\$1,433,024	\$218,050	\$1,651,074	\$0	\$38,133,853	\$0	\$0	\$39,784,927	\$0
3 Career & Technology Education Upgrades	\$10,101,734	\$10,159,765	\$2,118,379	\$0	\$2,118,379	\$0	\$8,041,386	\$733,704	\$873,805	\$9,285,960	\$140,101
4 Collinswood K-8 *	\$44,172,540	\$42,272,540	\$5,010,772	\$36,877,134	\$41,887,906	\$0	\$384,634	\$41,296,589	\$41,298,634	\$973,906	\$2,045
5 East Mecklenburg HS	\$12,771,594	\$15,058,594	\$1,739,823	\$128,911	\$1,868,734	\$0	\$13,189,860	\$734,921	\$747,172	\$14,311,422	\$12,251
6 Garinger HS	\$13,936,979	\$14,486,979	\$818,903	(\$70,000)	\$748,903	\$0	\$13,738,076	\$29,417	\$44,125	\$14,442,854	\$14,708
7 Harding University High *	\$18,330,263	\$14,530,263	\$2,055,794	\$11,699,734	\$13,755,528	\$56,133	\$718,602	\$13,023,953	\$13,133,674	\$1,396,589	\$109,721
8 Charlotte-Mecklenburg Academy (FKA -EC Specialty	\$18,957,960	\$18,079,506	\$2,174,430	\$15,790,598	\$17,965,028	\$2,665	\$111,813	\$17,651,678	\$17,698,146	\$381,360	\$46,469
9 Lansdowne Elementary	\$29,391,270	\$37,128,834	\$4,053,465	\$336,830	\$4,390,295	\$0	\$32,738,539	\$1,704,037	\$1,731,223	\$35,397,611	\$27,185
10 Lincoln Heights Elementary	\$3,740,478	\$4,588,675	\$577,905	\$26,774	\$604,679	\$0	\$3,983,996	\$200,613	\$217,883	\$4,370,792	\$17,270
11 Montclair Elementary Replacement *	\$28,559,390	\$28,559,390	\$2,426,561	\$26,045,319	\$28,471,879	\$0	\$87,511	\$24,954,204	\$25,208,776	\$3,350,614	\$254,572
12 Mountain Island k-8	\$9,218,439	\$10,488,400	\$382,565	\$0	\$382,565	\$0	\$10,105,835	\$0	\$0	\$10,488,400	\$0
13 Northwest School of the Arts	\$17,632,202	\$20,467,000	\$731,736	\$117,644	\$849,380	\$0	\$19,617,620	\$0	\$0	\$20,467,000	\$0
14 Shamrock Gardens Elementary *	\$29,890,351	\$35,358,351	\$3,598,939	\$26,053,763	\$29,652,702	\$0	\$5,705,649	\$1,607,320	\$1,792,835	\$33,565,516	\$185,515
15 Sharon Elementary	\$7,706,528	\$9,475,862	\$1,525,092	\$7,553,959	\$9,079,051	\$67,583	\$329,229	\$3,537,302	\$4,151,256	\$5,324,606	\$613,955
16 South Mecklenburg HS	\$13,352,143	\$15,622,927	\$554,114	\$94,238	\$648,352	\$0	\$14,974,575	\$0	\$0	\$15,622,927	\$0
17 E.E. Waddell Magnet HS	\$4,571,709	\$5,137,367	\$195,476	\$0	\$195,476	\$0	\$4,941,891	\$0	\$0	\$5,137,367	\$0
18 West Charlotte HS Replacement	\$109,977,166	\$109,977,166	\$12,311,883	\$88,163,139	\$100,475,022	\$144,000	\$9,358,144	\$25,416,561	\$29,715,557	\$80,261,609	\$4,298,996
19 West Mecklenburg HS	\$11,065,440	\$10,850,902	\$1,706,339	\$8,755,933	\$10,462,272	\$37,450	\$351,180	\$2,865,792	\$3,529,802	\$7,321,100	\$664,010
20 John Taylor Williams	\$13,964,339	\$15,732,600	\$579,520	\$0	\$579,520	\$0	\$15,153,080	\$0	\$0	\$15,732,600	\$0
Total Replacement & Renovations	\$460,639,952	\$489,722,778	\$48,929,467	\$248,346,988	\$297,276,455	\$444,947	\$192,001,375	\$141,587,330	\$151,180,007	\$338,542,771	\$9,592,677
<u>B. RESPONSE TO ENROLLMENT GROWTH</u>											
1 South Academy of International Languages	\$45,359,367	\$42,959,367	\$6,308,311	\$35,668,434	\$41,976,745	\$70,037	\$912,584	\$29,336,145	\$31,035,644	\$11,923,723	\$1,699,499
2 New K-8 North Language Immersion *	\$45,359,367	\$43,359,367	\$6,551,006	\$35,612,836	\$42,163,841	\$127,223	\$1,068,303	\$29,864,856	\$31,945,295	\$11,414,072	\$2,080,439
3 New Elementary School - Nations Ford/Sterling/Steel	\$29,173,829	\$31,572,550	\$6,971,864	\$24,395,881	\$31,367,745	\$82,253	\$122,552	\$9,912,330	\$13,890,477	\$17,682,072	\$3,978,147
4 New Elementary School - Bain/Lebanon Relief	\$29,988,332	\$31,455,951	\$3,044,493	\$0	\$3,044,493	\$0	\$28,411,458	\$709,577	\$1,076,903	\$30,379,048	\$367,326
5 New Elementary School - Windsor Park Relief *	\$30,422,230	\$37,197,022	\$1,604,673	\$177,404	\$1,782,077	\$0	\$35,414,945	\$11,000	\$11,000	\$37,186,022	\$0
6 New Elementary School - Elon/Hawk Ridge Relief *	\$30,426,712	\$43,476,676	\$12,431,522	\$0	\$12,431,522	\$0	\$31,045,154	\$10,837,092	\$10,837,092	\$32,639,584	\$0
7 New Elementary School - Hidden Valley Relief	\$30,518,345	\$34,697,022	\$3,839,724	\$179,875	\$4,019,599	\$0	\$30,677,423	\$950,408	\$950,408	\$33,746,614	\$0
8 New High School - Olympic Relief	\$109,908,793	\$109,908,793	\$11,708,525	\$91,828,509	\$103,537,034	\$176,691	\$6,195,069	\$23,851,869	\$27,054,093	\$82,854,700	\$3,202,224
9 New High School - South Meck/Ardrey Kell Relief *	\$110,287,621	\$154,930,460	\$10,656,321	\$711,379	\$11,367,700	\$0	\$143,562,760	\$753,955	\$1,026,959	\$153,903,501	\$273,003
Total Response to Enrollment Growth	\$461,444,596	\$529,557,208	\$63,116,439	\$188,574,318	\$251,690,757	\$456,203	\$277,410,247	\$106,227,233	\$117,827,870	\$411,729,337	\$11,600,637
<u>C. CONTINGENCY</u>											
	\$0	\$0	\$0	\$0	\$0	\$0	\$0	\$0	\$0	\$0	\$0
Total Contingency	\$0	\$0	\$0	\$0	\$0	\$0	\$0	\$0	\$0	\$0	\$0
TOTAL LOCAL BOND PROGRAM	\$922,084,548	\$1,019,279,985	\$112,045,906	\$436,921,306	\$548,967,212	\$901,150	\$469,411,622	\$247,814,564	\$269,007,877	\$750,272,108	\$21,193,314

Original project estimated costs approved by the Board Of Education on July 25, 2017 approved by the voters of Mecklenburg County on November 7, 2017.

*Project included in \$33.2M early funding approved by Board Of Education on August 9, 2016 and Mecklenburg Board of County Commissioners on September 6, 2016. On February 19, 2019 an additional \$8M was approved for New Elementary School - Elon/Hawk Ridge Relief site.

*Current Budget includes an additional \$89.2M to fund increase land and construction costs. The additional funds were approved by the Board of County Commissioners on June 16, 2020.

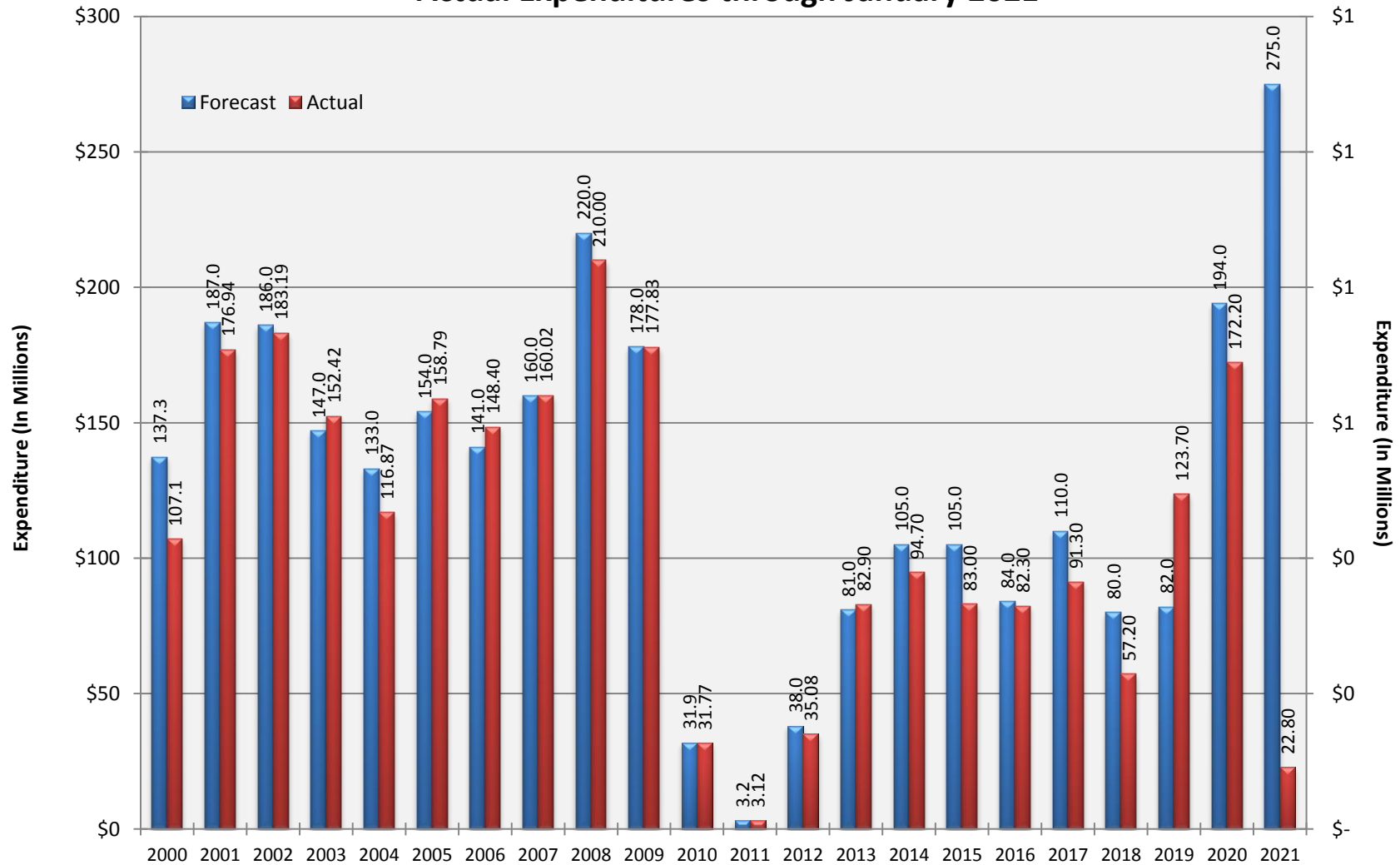
Charlotte-Mecklenburg Board of Education
Approved Construction or Repair Change Orders*
Reporting Period: January 2021

Funding Source	Project Name	Contractor	Description	Change Order Amount	Revised Contract Value
2017 Bond	South Academy of International Languages (fka New K-8 School (South) (17)	Messer Construction Company	Modify Faucets to Sensor Type	\$32,838.28	\$35,450,433.34

* Not previously presented to the Board of Education for Approval (less than \$90,000)

EXPENDITURE SUMMARY

Forecast Expenditure versus
Actual Expenditures through January 2021



** Expenditures include 1996 Bond thru 2017 Early Funding

GLOSSARY

Glossary

- **Project Management** – This section includes updates from our project managers and describes the currently active construction projects. This includes from Board of Education award thru final completion.
- **Design and Bidding** – This section contains updates from our design managers on the projects currently in the design phase. This phase from design award to Board of Education award of construction.
- **Controls** – Section includes misc. updates from controls group including expenditures, related Board of Education awards during the reporting period, cash flow information. This section covers all projects from approved bond through final expenditures and bond close with the county.
- **MWSBE** – Contains updates from the MWSBE Director and team, including current activity and summaries of the participation by MWSBE providers on our program.
- **Bond Progress Summary** – Provides a summary of bond financials including bond value, committed/pending amounts, paid to date, expended this month.
- **Project Procurement Dates** - Next 90 Days major project bid activity.
- **Mobile Swing Space Utilization** – Includes a summary of program related swing space currently in use and the schedule of use.
- **Bond Summary Schedule** – Current program summary schedule including planned design, construction and FF&E. These activities are fed from detailed schedules and are fine-tuned as project information is available.
- **Project Contractor Teams**; Provides summary of turnover dates for completed/closed projects since 2010 including architects/designers and contractors.
- **School Site Location Maps** – General location of bond projects (2017) by type.
- **Project Status Report** – This section of the report provides a summary of the bond project scope, current estimate (all sources), planned occupancy/actual occupancy date. It also provides a current status of the design phase, construction progress and a brief update. The report currently includes 2013 and 2017 bond projects that have or will be completed after to August 2016.
- **MWSBE Participation Report** – The MWSBE report provides a summary of the participation on the 2013 & 2017 Bond funded projects.
- **Project Progress Photos** – Includes photos of active construction projects.
- **Budget Summary Reports** – These reports are by funding source and summarize financial activity to date on the projects. This includes original and current project estimates, committed values, amounts paid to date, balances and monthly expenditures.
- **Change Orders < \$90,000** – This month's approved construction or repair change orders < \$90,000.
- **Expenditure Summary** – Provides a summary of Bond Expenditures by calendar year.