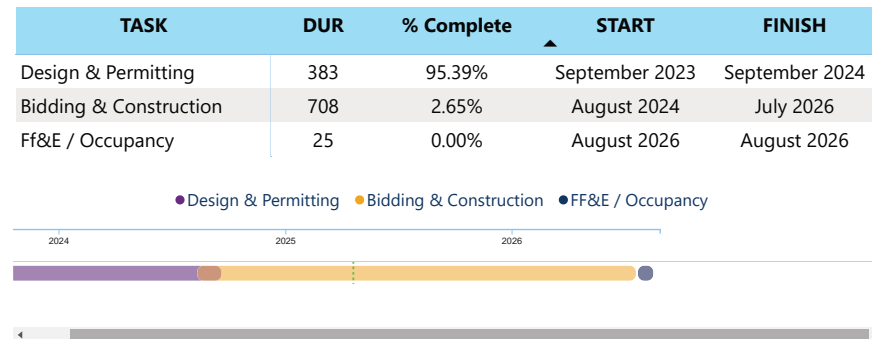




Project Information

| | |
|-----------------------------|--|
| Bond Program | 2023 Bond |
| Facility Name | New Middle School 1 South (23) |
| Address | 5400 Campe Verde Lane Charlotte, NC 28277 |
| Architect | Hord Coplan Macht, Inc. |
| Construction Manager | Messer Construction Company |
| Percent Complete | 8% |
| Occupy On | August 2026 |

Schedule



Scope of Work

Baseline 54-classroom Middle School facility to relieve Community House MS, Jay M. Robinson MS and Rea Farms STEAM K-8.

Project Status

New Middle School 1 South continues with installation of the Phase 1 erosion control, mass grading operations and removal of rock at the detention basin. The project consists of a new 54-classroom middle school.



Financial Summary

Financial Summary

[Budget](#)
[Contracts](#)
[Expenditures](#)
[MWSBE](#)

| FACILITY | BUDGET | TOTAL COMMITTED | TO BE COMMITTED | PAID TO DATE | MWSBE % |
|----------------------------|---------------|-----------------|-----------------|--------------|---------|
| New Middle School #1 South | \$101,089,262 | \$69,174,120 | \$31,915,142 | \$5,025,308 | 19.30% |