



Project Information

| | |
|----------------------|--|
| Bond Program | 2023 Bond |
| Facility Name | South Mecklenburg High School Replacement (23) |
| Address | 8900 Park Road Charlotte, NC 28210 |
| Architect | Morris Berg Architects |
| Construction Manager | Whiting-Turner Contracting Company |
| Percent Complete | 1% |
| Occupy On | August 2027 |

Scope of Work

Final phases of work, to include onsite replacement of balance of campus to +/- 100 classroom baseline, comprehensive athletics package.

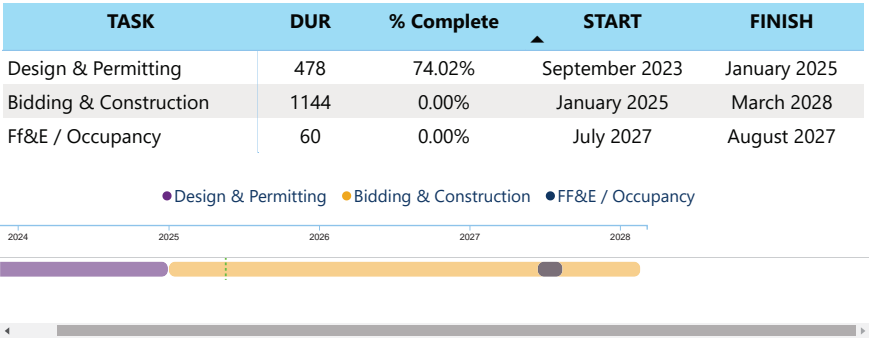


Project Status

Permitting is nearly complete and the construction award was approved by the Board of Education in April. Preconstruction planning, submittals and procurement continue.



Schedule



Financial Summary

Financial Summary

Budget

Contracts

Expenditures

MWSBE

| FACILITY | BUDGET | TOTAL COMMITTED | TO BE COMMITTED | PAID TO DATE | MWSBE % |
|---|---------------|-----------------|-----------------|--------------|---------|
| South Mecklenburg High School Replacement | \$127,909,253 | \$114,872,503 | \$13,036,750 | \$4,394,132 | 21.48% |