

Capital Improvement Program

Monthly Bond Report
November 2023



Ballantyne Ridge High School



CAPITAL PROGRAM SERVICES

Capital Improvement Program

NOVEMBER 2023

MONTHLY BOND REPORT

PROGRAM OVERVIEW

- Project Management
- Design and Bidding
- Controls
- MWSBE
- Bond Progress Summary
- Project Procurement - Next 90 Days
- Bond Summary Schedule
- Project Contractor Teams; Projects in Design/Construction and Substantially Completed/Closed
- School Site Location Maps
 - Elementary Schools
 - Middle Schools
 - High Schools & Specialty Schools

PROJECT STATUS REPORT

MWSBE PARTICIPATION REPORT

PROJECT PROGRESS PHOTOS

PROJECT CONTROLS

- Budget Summary Reports
 - 2013 Bond Series
 - 2017 Bond Series
 - 2023 Bond Series
- Change Orders < \$90,000
- Expenditure Summary

GLOSSARY

PROGRAM OVERVIEW

PROJECT MANAGEMENT

The following is a summary of the activity on the bond-funded projects in construction during the month of November.

The **Bruns Avenue Elementary School Replacement** construction manager continues enclosing the building. The classroom wing has been temporarily dried in with poly installed over the openings. Brick veneer has begun with installations at high/low roof conditions on the classroom wing. Interior metal stud installations progressed well throughout the building. The mechanical, electrical and plumbing trades continue with the installation of overhead and in-wall rough in. The construction manager was notified of additional supply chain delays affecting some air-handling units, the team is working on contingency plans to overcome impacts. Scheduled occupancy is August 2024. The demolition of the old building and associated site work will commence once the new building is occupied.

The **New Elementary School (Elon, Hawk Ridge, Polo Relief)** construction manager continues to manage multiple trades on the project. Mechanical, electrical and plumbing (MEP) trades continue work with above ceiling and in wall rough in throughout the building. The glass and glazing contractor progressed throughout the building with windows and storefront. The painter, tile and ceiling trades mobilized on site and started work in designated areas. The landscaper mobilized and began installation of plantings and sod. The site work contractor continued with installations on Beau Riley Road and final grading around the building. The offsite roadwork contractor continued with the road widening scope final grading to subgrade on the road and sidewalk. The construction manager is utilizing temporary conditioning of the throughout the building. The new 45-classroom elementary school is located across from the Ardrey Kell High School and scheduled occupancy is August 2024.

The **New Ballantyne Ridge High School** (*fka New High School (South, Ardrey Relief)*) construction manager continued coordinating the numerous trades on site. The mason continued with interior CMU and brick veneer installation throughout the building. Spray fireproofing continued on the third and fourth floor of the classroom wing. Interior metal stud installations continued on the second and third floor. Drywall installations began on the first floor throughout the building. The MEP trades continued with following the interior studs within wall and above ceiling rough in. The main electrical switchgear was installed along with one of the two transformers. Installation of the cast iron boilers and their components began in the mechanical room. The athletic surfaces were placed on the main and practice fields with the stripping and numbering being cut in. The site work contractor continued with final grading, roadwork, the remaining site walls, and installation of the bottomless culvert. The team continues to work with Charlotte Water and Duke Power to facilitate permanent power to the building. The new 100-classroom relief high school scheduled occupancy is August 2024.

The **Northwest School of the Arts** construction manager continued on the Phase 1 parking lot. Installation of below grade electrical along with the remaining storm and sewer piping was completed. Curb and gutter and the perimeter and islands were also completed. The Phase 1 scope includes an underground storm water detention system and new car parking lot in preparation for the new building in Phase 2.

The **South Mecklenburg High School** construction manager has cleared the site, and installed temporary construction fencing and lay down area to support the project. Underground storm water control piping is underway. The project team is reviewing material submittals. The new 19-classroom building will house JROTC and Arts. The new classroom wing is scheduled for occupancy in January 2025.

DESIGN AND BIDDING

The following is a summary of the activity on the bond-funded projects in design and bidding phase during the month of November.

The **Northwest School of the Arts** Phase 2 design documents continue to progress through the building permit approval process. The construction manager is preparing for their subcontractor qualification process and bidder manual development. Phase 2 scope includes a new administration, visual/performing arts building and other campus renovations.

The designer agreement for the **Cotswold Elementary Replacement School** is finalized and being processed. The design kick off and leadership meetings will be scheduled first quarter 2024.

The designer agreement for the **First Ward Elementary School Renovations** project is finalized and being processed. The designer kick-off meeting is scheduled to occur in December and leadership meetings will begin in January.

The designer agreement for the **Marie G. Davis Montessori Upfit** project is finalized and being processed. The designer kick-off meeting is scheduled to occur in December and leadership meetings will begin in January.

The designer agreement for the **New Second Ward High School** is finalized and being processed. The designer kick-off meeting is scheduled to occur in December and leadership meetings will begin in January.

The **New South MS 1** architect is coordinating with Capital Program Services and CMS Planning and Real Estate Department to develop the required submittal drawings for the ongoing rezoning process for the development of the land. Schematic phase design documents are being prepared and leadership meetings will begin in December. The project includes a 54-classroom middle school facility that is currently scheduled for occupancy August 2026.

The designer agreement for the **North Mecklenburg High School Replacement** project is finalized and being processed. The designer kick-off and leadership meetings are scheduled to occur in December.

The designer agreement for the **New Park Road Elementary School** project is finalized and pre-schematic design is underway. The design leadership meetings are scheduled to begin in January.

The designer agreement for the **Sedgefield Elementary School Montessori Upfit** project is finalized and being processed. The designer kick-off meeting and leadership meeting are scheduled occur in January.

The designer agreement for the **South Mecklenburg High School Replacement** project is finalized and being processed. The designer kick-off meeting is scheduled for December and leadership meetings will begin in January.

CONTROLS

Expenditures for the month of November were \$15.8M. This brings our fiscal year to date total to \$79.2M against the 2024 fiscal year cash flow projection of \$165M. The voters of Mecklenburg County approved a \$2.5 billion Charlotte-Mecklenburg Schools Facilities Bond Referendum on November 7, 2023. Eight early funded 2023 bond projects are included in this report. The Controls team continues the reconciliation and closeout of completed 2017 bond projects. Completed purchase orders are being closed out. Available funding identified from completed purchase orders are being accumulated to be used for future capital needs.

The Controls team continues to submit notices of potential changes at school sites so senior staff can adequately evaluate any issues. Additionally, the Controls team continues the processing of contracts, invoices, preparing notices of potential change, change orders, pay applications, and check requests for projects under construction. Captured construction cost data is used to prepare financial reports such as detailed cost reports, budget summaries, reconciliation to CMS books, revisions to and updated cash flows and complete special financial requests by CMS and Mecklenburg County. This process, along with data compilation and management, allows senior staff to provide the proper guidance/direction and accurate information to the program.

No Bond related consent items were submitted for Board of Education approval during the month of November.

MWSBE

As of November 2023, the overall MWSBE utilization percentage related to design and construction of the 2017 bond projects is 45.30% which includes 19.29% participation by minority contractors, 22.45% by women contractors and 3.57% participation by small business contractors. This accounts for more than \$409 million of utilization by Minority, Women and Small Business Contractors.

The Diversity & Inclusion Office of Charlotte-Mecklenburg Schools continued to conduct several individual virtual orientations with new MWSBE contractors and prime contractors. In addition, team members also attended/hosted the following outreach sessions/pre-bid meetings and/or workforce development opportunities:

Outreach Sessions:

- NC Statewide MED Week Awards Luncheon
- NC MWBE Coordinators' Network Educational Conference

Over the next month, team members will continue to work with contractors interested in bidding on the upcoming school projects utilizing various virtual tools to communicate. Contractors are encouraged to review bid advertisements in Charlotte Observer and register as a vendor on the North Carolina electronic Vendor Portal (eVP) for notification of the various opportunities.

BOND PROGRESS SUMMARY As of November 2023

Funding Source and Value		Amount Committed/Pending	Amount Paid to Date	Amount Expended This Period
'13 Bond	\$316,067,527	\$316,031,257	\$316,031,252	\$0
'17 Bond	\$1,005,473,959	\$989,565,111	\$848,096,442	\$15,563,628
'23 Bond	\$907,149,902	\$73,266,185	\$374,399	\$209,524
Grand Total	\$2,228,691,388	\$1,378,862,553	\$1,164,502,093	\$15,773,152

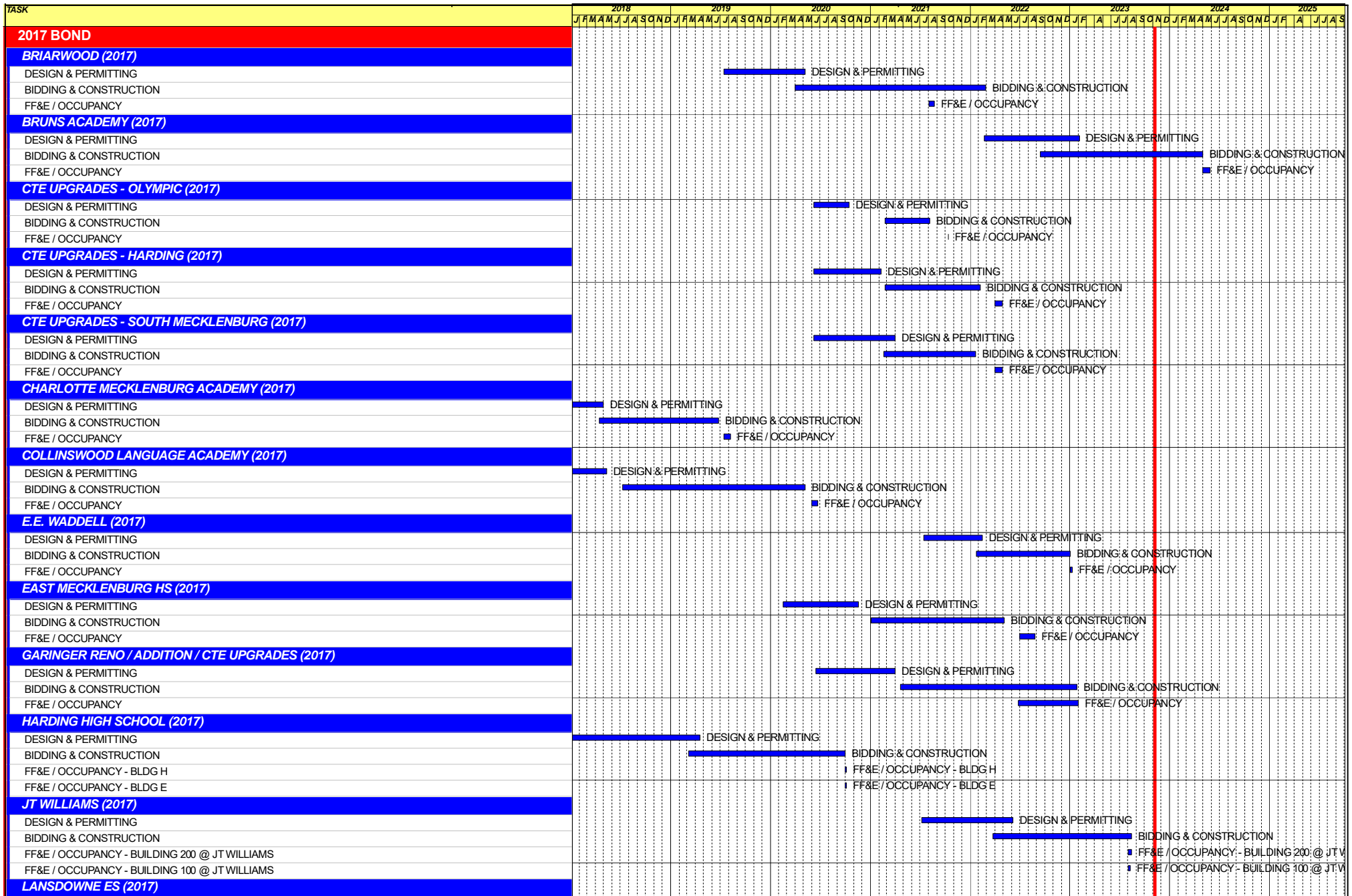
UPCOMING MAJOR CONSTRUCTION PROCUREMENT DATES *Three-Month Look Ahead*

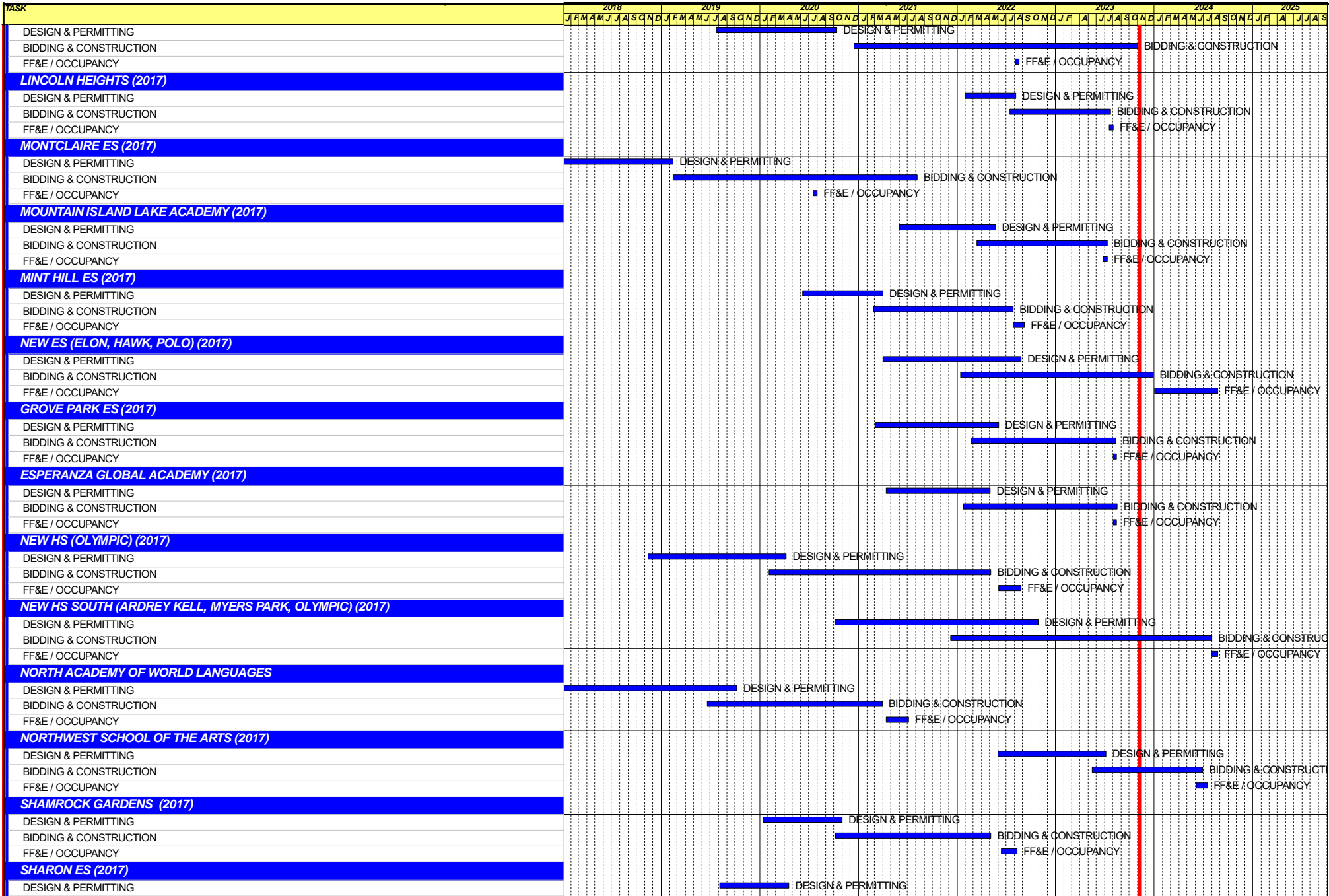
School Name

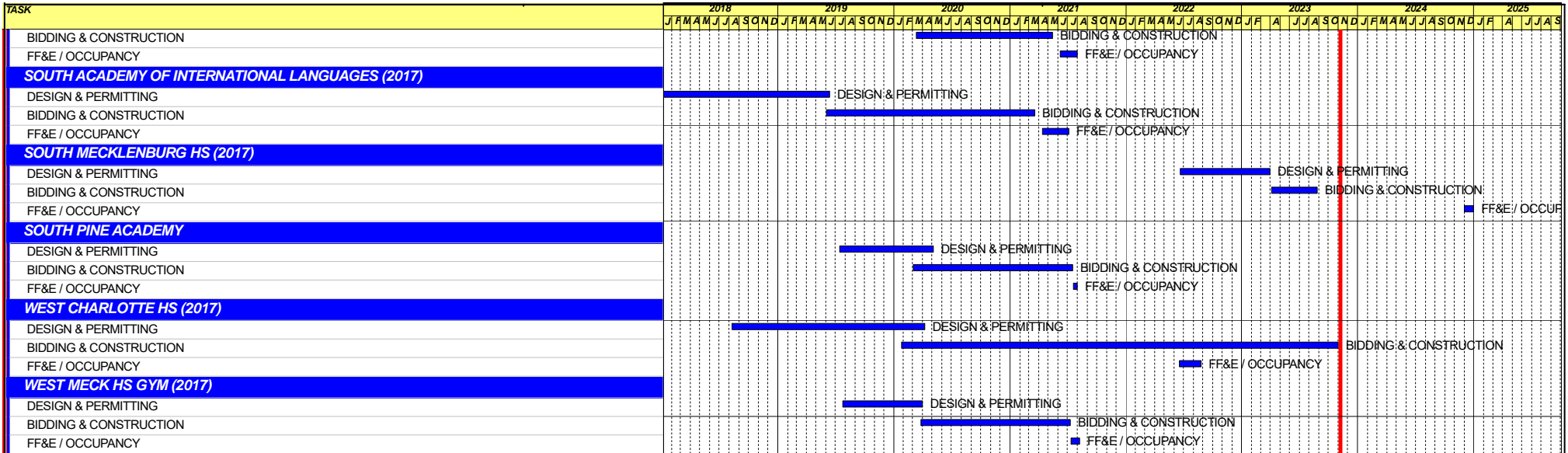
Bid Dates*

None

** NOTE: Work In Progress...Dates Subject to Change.*







Capital Improvements Program
Projects in Design or Under Construction








School	Architect	General Contractor/CM
Projects In Design		
Northwest School of the Arts Addition (17)	LS3P	Balfour Beatty
Projects in Bid/Award/Construction Phase		
New ES (Elon,Hawk Ridge, Polo Ridge) (17)	Little Diversified	Balfour Beatty
New Bruns Avenue ES (17)	ADW	Edifice, Inc.
New HS (South, Ardrey) (17)	Ratio	Messer
Northwest School of the Arts Addition (17)	LS3P	Balfour Beatty
South Mecklenburg High School Addition (17)	Morris Berg	Balfour Beatty

Capital Improvements Program
Projects Substantially Completed/Closed *




School	Turnover Year	Architect	General Contractor
J.T. Williams (17)	Aug-23	FWA	New Atlantic Contracting
Lincoln Heights Repurpose (17)	Aug-23	Neighboring Concepts	Randolph & Sons
Mountain Island School (17)	Aug-23	ADW	Whiting-Turner
Grove Park ES (17)	Aug-23	ADW	Edifice, Inc.
Esperanza Global Academy (17)	Aug-23	Neighboring Concepts	Rodgers-Holt Brothers
E.E. Waddell (17)	Jan-23	Moseley	Randolph & Sons Builders
Garinger Addition/Renovation & CTE (17)	Jan-23	LS3P	Balfour Beatty
West Charlotte High School (17)	Aug-22	LS3P	Rodgers-Holt Brothers
Lansdowne Elementary School Replacement (17)	Aug-22	Perkins Eastman	Edifice, Inc.
Palisades High School (Olympic Relief) (17)	Aug-22	Little Diversified	Edifice, Inc.
Shamrock Gardens Elementary School Replacement (17)	Aug-22	Little Diversified	Rodgers-Holt Brothers
Mint Hill ES (17) <i>(fka Bain, Lebanon Rd, Piney Grove)</i>	Aug-22	FWA	Metcon
East Mecklenburg High School (17)	May-22	Morris Berg	Turner Construction
CTE (Harding, Olympic, South) (17)	Jan-22	MPS	Branch Brownstone
Briarwood Elementary School Replacement (17)	Aug-21	ADW	New Atlantic Contracting
Montclair Elementary School (17)	Aug-21	WHN	Messer Construction
North Academy of World Languages (17)	Aug-21	ADW	New Atlantic Contracting
Sharon Elementary School (17)	Aug-21	Clark Nexsen	Samet
South Academy of International Languages (17)	Aug-21	FWA	Messer Construction
South Pine Academy (17)	Aug-21	FWA	Metcon
West Mecklenburg Gym (17)	Aug-21	Moseley	Barnhill/D.A. Everett
Collinswood Language Academy (17)	Aug-20	Perkins Eastman	Turner Construction
Harding High School Renovation (17)	Aug-20	SFLA	Barnhill Contracting
Rea Farms STEAM Academy (13)	Aug-20	Little Diversified	Balfour Beatty
Ashley Park K-8 Conversion (13)	Aug-19	ADW	Turner Construction
Druid Hills K-8 Conversion (13)	Aug-19	ADW	Edifice, Inc.
Selwyn Elementary (13)	Aug-19	Clark Nexsen	Balfour Beatty
Charlotte Mecklenburg Academy (17)	Aug-19	KSQ	Edifice, Inc.
Davidson K-8 (13)	Aug-19	Little Diversified	Gilbane
CTE - North Mecklenburg High (13)	Aug-19	LS3P	Shiel Sexton
CTE - Garinger (13)	Mar-19	LS3P	Hostetter & Son
CTE - Independence (13)	Mar-19	LS3P	D.E. Brown
CTE - West Mecklenburg (13)	Mar-19	LS3P	Hostetter & Son
Charlotte East Language Academy (13)	Aug-18	Morris Berg	Edifice, Inc
Myers Park High School Phase 3 (13)	Aug-18	Boomerang Design	BE&K
Northridge Middle (13)	Aug-18	Morris Berg	Barnhill Contracting
Myers Park High Bldg 2 (13)	Feb-18	Boomerang Design	BE&K
East Mecklenburg High Addition (13)	Jan-18	Bergman (fna Gantt Huberman)	Edifice, Inc.
J.M. Alexander Middle (13)	Aug-17	FWA Group	Balfour Beatty
Northwest School of the Arts Renovation (13)	Aug-17	Moseley	Turner Construction
Renaissance West STEAM Academy (13)	Aug-17	Little Diversified	Rodgers Construction
South Mecklenburg High Addition (13)	Jul-17	SFLA	Barnhill Contracting
Myers Park High Bldg 1 (13)	Sep-16	Boomerang	KBR
Statesville Road Elementary (13)	Aug-16	ADW	JE Dunn
Nations Ford Elementary (13)	Aug-16	Wash Hatem Nelson	Messer Construction
Olympic High Addition (13)	Aug-16	McMillan, Pazdan, Smith	Turner Construction
Lawrence Orr Elementary (07)	Aug-15	Cort Architectural Group	DH Griffin/Metcon
Parkside Elementary (07)	Aug-15	Wash Hatem Nelson	Clancy & Theys
Hawthorne High Renovations (07)	Aug-15	Morris-Berg	Balfour Beatty
Newell Elementary (07)	Aug-15	Perkins Eastman	New Atlantic Contracting
Ranson Middle (07)	Aug-15	Morris-Berg	Edifice, Inc.
Vance High	Jan-15	LS3P	Matthews Construction Co., Inc.

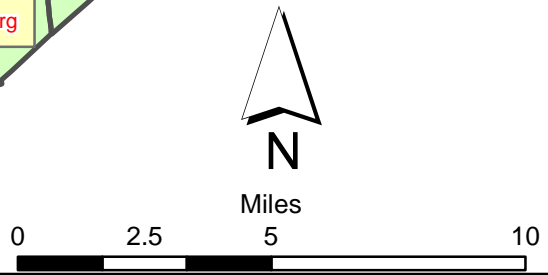
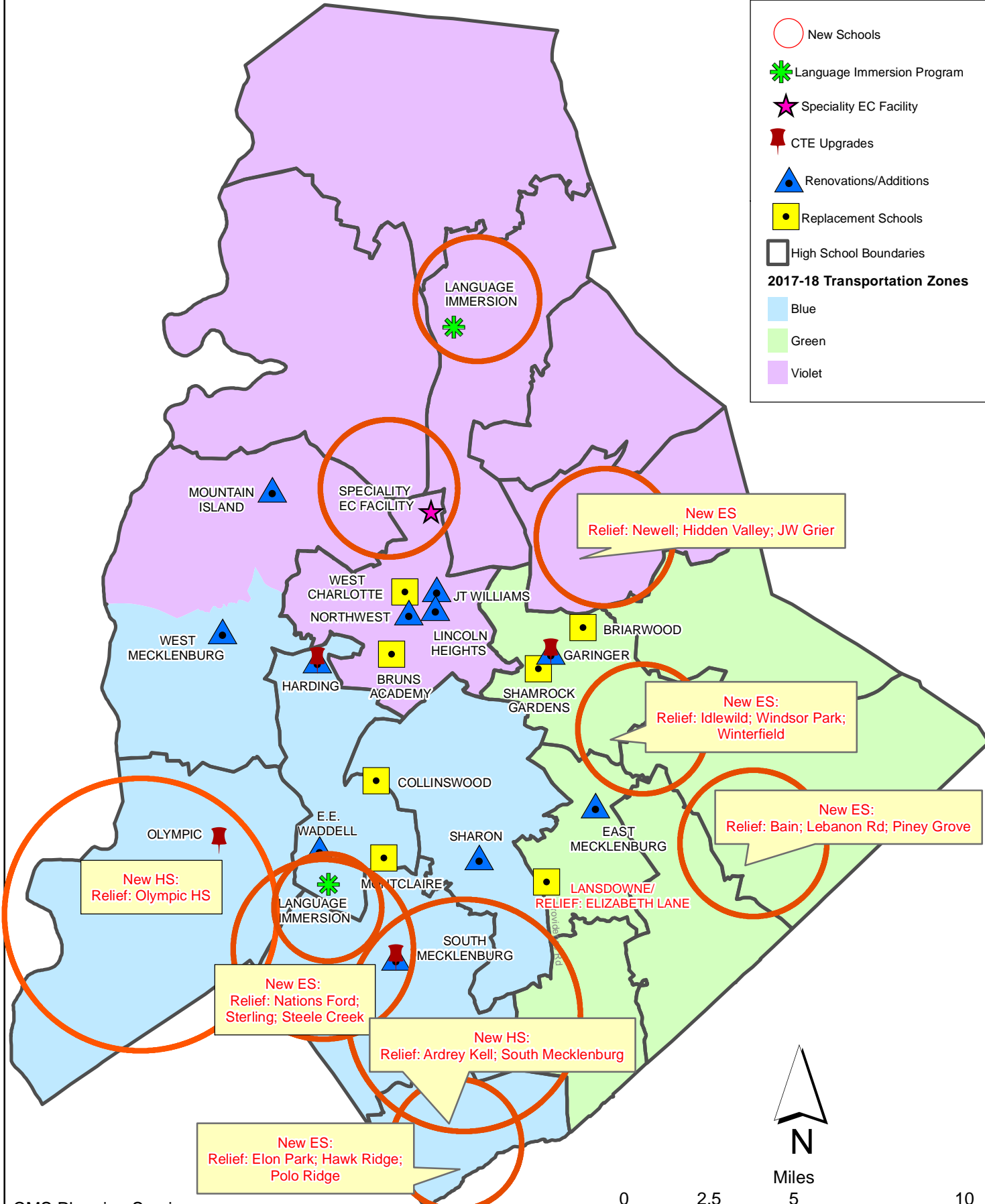
Projects closed prior to 2015 are not shown

CMS Capital Improvement Plan 2017 Bond Projects

-  New Schools
-  Language Immersion Program
-  Speciality EC Facility
-  CTE Upgrades
-  Renovations/Additions
-  Replacement Schools
-  High School Boundaries

2017-18 Transportation Zones

-  Blue
-  Green
-  Violet



PROJECT STATUS REPORT



Monthly Project Status 2017 Bond Summary

November 2023

Project	Current Project Estimate	Project Scope	** Occupy On	Design Phase	Construction Progress	Project Status
Ballantyne Ridge High School (17)	\$ 148,962,116	New 100 classroom high school to relieve South Mecklenburg, Ardrey Kell and Myers Park HS.	August 2024	Complete	71 %	The New Ballantyne Ridge High School (fka New High School (South, Ardrey Relief) construction manager continued coordinating the numerous trades on site. The mason continued with interior CMU and brick veneer installation throughout the building. Spray fireproofing continued on the third and fourth floor of the classroom wing. Interior metal stud installations continued on the second and third floor. Drywall installations began on the first floor throughout the building. The MEP trades continued with following the interior studs within wall and above ceiling rough in. The main electrical switchgear was installed along with one of the two transformers. Installation of the cast iron boilers and their components began in the mechanical room. The athletic surfaces were placed on the main and practice fields with the stripping and numbering being cut in. The site work contractor continued with final grading, roadwork, the remaining site walls, and installation of the bottomless culvert. The team continues to work with Charlotte Water and Duke Power to facilitate permanent power to the building.
Briarwood Elementary School (17)	\$ 31,243,066	45-classroom replacement facility; replaces school built in 1956.	August 2021	Complete	100 %	Project is complete.

Monthly Project Status

2017 Bond Summary

November 2023

Project	Current Project Estimate	Project Scope	** Occupy On	Design Phase	Construction Progress	Project Status
Bruns Avenue Elementary School (17)	\$ 48,859,580	New 45-classroom elementary school (K-5); replaces old school built in 1969.	August 2024	Complete	48 %	The Bruns Avenue Elementary School Replacement construction manager continues enclosing the building. The classroom wing has been temporarily dried in with poly installed over the openings. Brick veneer has begun with installations at high/low roof conditions on the classroom wing. Interior metal stud installations progressed well throughout the building. The mechanical, electrical and plumbing trades continue with the installation of overhead and in-wall rough in. The construction manager was notified of additional supply chain delays affecting some air-handling units, the team is working on contingency plans to overcome impacts. The demolition of the old building and associated site work will commence once the new building is occupied.
Career and Technology Education (17)	\$ 6,984,007	Phase I CTE upgrades at Olympic, Harding, Garinger and South Mecklenburg.	January 2022	Complete	100 %	Project is complete.
Charlotte-Mecklenburg Academy (17)	\$ 17,699,220	New EC school located on the old Statesville Elementary School site.	August 2019	Complete	100 %	Project is complete.
Collinswood Language Academy (17)	\$ 41,401,384	New 63-classroom K-8 facility on the site of the Smith Family Center.	August 2020	Complete	100 %	Project is complete.
E.E. Waddell (17)	\$ 5,137,367	Repurpose current E.E. Waddell to reopen as a magnet high school.	August 2023	Complete	100 %	Project is complete.
East Mecklenburg High School (17)	\$ 10,231,911	This project will provide for the design, and construction of a new 30 classroom building.	August 2022	Complete	100 %	Project is complete.
Esperanza Global Academy (17)	\$ 45,297,022	New 45-classroom elementary school to relieve Windsor, Winterfield, and Idlewild ES.	August 2023	Complete	100 %	The Esperanza Global Academy (fka New ES Windsor, Winterfield, Idlewild Relief) construction manager continues to work on building commissioning and is nearing completion. Punch list and project closeout continues.
Garinger High School (17)	\$ 5,236,979	Project includes the design and construction for renovations of 300 building and a new 16 classroom building.	January 2023	Complete	100 %	Project is complete.

Monthly Project Status

2017 Bond Summary

November 2023

Project	Current Project Estimate	Project Scope	** Occupy On	Design Phase	Construction Progress	Project Status
Grove Park Elementary School (17)	\$ 44,079,387	New 45-classroom elementary school; relieves overcrowding at Hidden Valley, J.W. Grier, Newell.	August 2023	Complete	100 %	The Grove Park Elementary School (fka New ES Hidden Valley, JW Grier, Newell) construction manager continues to work on building commissioning and is nearing completion. Punch list and project closeout continues.
Harding High School (17)	\$ 13,747,878	Renovation of the kitchen, cafeteria, existing gym (aux) and the addition of a new gym.	August 2020	Complete	100 %	Project is complete.
JT Williams (17)	\$ 17,032,600	Project includes building renovations to J.T. Williams Montessori magnet.	August 2023	Complete	100 %	The construction manager for JT Williams Secondary Montessori is nearing completion with building commissioning. RTU's have been replaced with permanent units. The project is now in the closeout phase.
Lansdowne Elementary School (17)	\$ 33,554,188	New 45-classroom school; replaces old school built in 1959 and relieve crowding at Elizabeth Lane ES.	August 2022	Complete	100 %	Project is complete.
Lincoln Heights Elementary School (17)	\$ 4,588,675	Repurpose and reopen as magnet school.	August 2023	Complete	100 %	The Lincoln Heights Montessori School repurpose project renovations are complete. The project is now in the closeout phase.
Mint Hill Elementary School (17)	\$ 29,480,274	New 45-classroom elementary school; relieves crowding at Bain, Lebanon Road, Piney Grove.	August 2022	Complete	100 %	Project is complete.
Montclair Elementary School (17)	\$ 28,200,634	New 45-classroom replacement facility replacing school built in 1958.	August 2020	Complete	100 %	Project is complete.
Mountain Island Lake Academy (17)	\$ 13,239,686	K-8 Phase 2 - New gymnasium and specialty classrooms.	August 2023	Complete	100 %	The Mountain Island Lake Academy Gym/Classroom Addition construction manager is working on their closeout activities along with punch list items. The new building is occupied.

Monthly Project Status

2017 Bond Summary

November 2023

Project	Current Project Estimate	Project Scope	** Occupy On	Design Phase	Construction Progress	Project Status
New Elementary School (Elon, Hawk Ridge, Polo Relief) (17)	\$ 60,641,760	New 45-classroom elementary school to relieve Elon, Hawk Ridge, Polo.	August 2024	Complete	73 %	The New Elementary School (Elon, Hawk Ridge, Polo Relief) construction manager continues to manage multiple trades on the project. Mechanical, electrical and plumbing (MEP) trades continue work with above ceiling and in wall rough in throughout the building. The glass and glazing contractor progressed throughout the building with windows and storefront. The painter, tile and ceiling trades mobilized on site and started work in designated areas. The landscaper mobilized and began installation of plantings and sod. The site work contractor continued with installations on Beau Riley Road and final grading around the building. The offsite roadwork contractor continued with the road widening scope final grading to subgrade on the road and sidewalk. The construction manager is utilizing temporary conditioning of the throughout the building.
North Academy of World Languages (17)	\$ 41,742,062	New 66 classroom K-8 Language Immersion facility located on the old J.M. Alexander Middle School site.	August 2021	Complete	100 %	Project is complete.
Northwest School of the Arts (17)	\$ 12,167,000	Replace classroom buildings B&D and build classroom addition that supports program. 1st phase includes parking and U/G stormwater.	January 2025	Complete	61 %	The Northwest School of the Arts construction manager continued on the Phase 1 parking lot. Installation of below grade electrical along with the remaining storm and sewer piping was completed. Curb and gutter and the perimeter and islands were also completed. The Phase 1 scope includes an underground storm water detention system and new car parking lot in preparation for the new building in Phase 2. The Northwest School of the Arts Phase 2 design documents continue to progress through the building permit approval process. The construction manager is preparing for their subcontractor qualification process and bidder manual development. Phase 2 scope includes a new administration, visual/performing arts building and other campus renovations.
Palisades High School (17)	\$ 107,592,534	New 100 classroom high school; relieves crowding at Olympic High School.	August 2022	Complete	100 %	Project is complete.

Monthly Project Status

2017 Bond Summary

November 2023

Project	Current Project Estimate	Project Scope	** Occupy On	Design Phase	Construction Progress	Project Status
Shamrock Gardens Elementary School (17)	\$ 30,084,692	New 45-classroom replacement facility.	August 2022	Complete	100 %	Project is complete.
Sharon Elementary School (17)	\$ 9,125,862	Add 16 classroom building and increase capacity of cafeteria.	August 2021	Complete	100 %	Project is complete.
South Academy of International Languages (17)	\$ 40,669,909	New 71 classroom K-8 Language Immersion facility located on the old Nations Ford Elementary School site.	August 2021	Complete	100 %	Project is complete.
South Mecklenburg High School (17)	\$ 17,322,927	Renovate/replace two classroom buildings built in 1958 to upgrade learning conditions.	January 2025	Complete	3 %	The South Mecklenburg High School construction manager has cleared the site, and installed temporary construction fencing and lay down area to support the project. Underground storm water control piping is underway. The project team is reviewing material submittals. The new 19-classroom building will house JROTC and Arts.
South Pine Academy (17)	\$ 30,477,421	New 45-classroom elementary school to relieve Nations Ford, Sterling, and Steele Creek.	August 2021	Complete	100 %	Project is complete.
West Charlotte High School (17)	\$ 104,413,163	New 100 classroom school to replace current facility built in 1954.	August 2022	Complete	100 %	The West Charlotte High School construction manager is substantially complete with Phase 2. Occupancy approvals have been granted for all athletic buildings. Baseball and Softball fields are complete. Punch list and project closeout continues.
West Mecklenburg High School (17)	\$ 6,260,654	Provide new gymnasium, the existing gymnasium will become the auxilliary.	August 2021	Complete	100 %	Project is complete.

MWSBE PARTICIPATION REPORT

MWSBE Participation Commitments - Design and Construction

Report Date 12/20/2023

Charlotte-Mecklenburg Schools

12/20/2023 10:54:19 AM

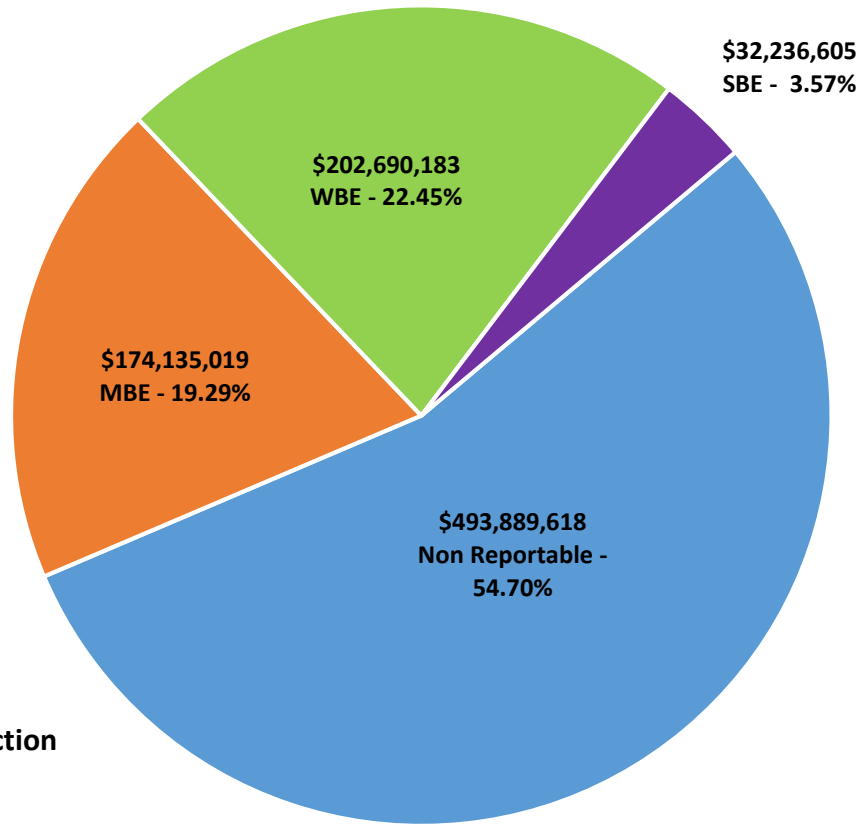
2017 Bond Projects

November 2023 Monthly Bond Report

Facility	Contract Amount	African American MBE\$	%	Other MBE \$	%	Total MBE \$	%	Other WBE \$	%	Other SBE \$	%	Total	%
<u>Ballantyne Ridge High School (17)</u>	\$134,809,170	\$3,115,551	2.31%	\$4,493,327	3.33%	\$7,608,878	5.64%	\$6,836,473	5.07%	\$9,968,449	7.39%	\$24,413,800	18.11%
<u>Briarwood Elementary School (17)</u>	\$28,327,548	\$4,038,457	14.26%	\$2,135,619	7.54%	\$6,174,076	21.80%	\$2,187,249	7.72%	\$187,102	0.66%	\$8,548,427	30.18%
<u>Bruns Avenue Elementary School (17)</u>	\$44,462,714	\$3,991,563	8.98%	\$3,840,621	8.64%	\$7,832,184	17.62%	\$8,579,499	19.30%	\$2,389,654	5.37%	\$18,801,337	42.29%
<u>Career and Technology Education (17)</u>	\$6,832,606	\$546,203	7.99%	\$452,980	6.63%	\$999,184	14.62%	\$392,157	5.74%	\$65,475	0.96%	\$1,456,815	21.32%
<u>Charlotte-Mecklenburg Academy (17)</u>	\$16,883,930	\$198,536	1.18%	\$1,031,692	6.11%	\$1,230,228	7.29%	\$928,655	5.50%	\$13,200	0.08%	\$2,172,083	12.86%
<u>Collinswood Language Academy (17)</u>	\$38,527,704	\$649,307	1.69%	\$1,613,104	4.19%	\$2,262,411	5.87%	\$11,363,565	29.49%	\$8,328	0.02%	\$13,634,304	35.39%
<u>E.E. Waddell (17)</u>	\$2,163,815	\$0	0.00%	\$0	0.00%	\$0	0.00%	\$59,254	2.74%	\$0	0.00%	\$59,254	2.74%
<u>East Mecklenburg High School (17)</u>	\$12,642,198	\$603,811	4.78%	\$532,460	4.21%	\$1,136,271	8.99%	\$490,364	3.88%	\$681,075	5.39%	\$2,307,710	18.25%
<u>Esperanza Global Academy (17)</u>	\$39,217,599	\$8,296,515	21.16%	\$4,662,363	11.89%	\$12,958,878	33.04%	\$24,143,175	61.56%	\$1,512,572	3.86%	\$38,614,625	98.46%
<u>Garinger High School (17)</u>	\$3,382,522	\$98,773	2.92%	\$291,746	8.63%	\$390,520	11.55%	\$390,676	11.55%	\$251,932	7.45%	\$1,033,127	30.54%
<u>Grove Park Elementary School (17)</u>	\$38,708,900	\$4,897,634	12.65%	\$5,166,568	13.35%	\$10,064,203	26.00%	\$2,302,300	5.95%	\$49,132	0.13%	\$12,415,635	32.07%
<u>Harding High School (17)</u>	\$13,015,986	\$1,504,505	11.56%	\$309,667	2.38%	\$1,814,172	13.94%	\$4,050,417	31.12%	\$36,861	0.28%	\$5,901,449	45.34%
<u>JT Williams (17)</u>	\$15,513,502	\$733,661	4.73%	\$373,832	2.41%	\$1,107,494	7.14%	\$3,720,335	23.98%	\$51,800	0.33%	\$4,879,628	31.45%
<u>Lansdowne Elementary School (17)</u>	\$30,736,689	\$2,809,680	9.14%	\$877,274	2.85%	\$3,686,954	12.00%	\$2,266,647	7.37%	\$222,210	0.72%	\$6,175,811	20.09%
<u>Lincoln Heights Elementary School (17)</u>	\$2,811,884	\$318,959	11.34%	\$18,800	0.67%	\$337,759	12.01%	\$64,894	2.31%	\$74,503	2.65%	\$477,156	16.97%
<u>Mint Hill Elementary School (17)</u>	\$25,946,007	\$5,223,675	20.13%	\$17,791,909	68.57%	\$23,015,584	88.71%	\$1,192,408	4.60%	\$308,370	1.19%	\$24,516,362	94.49%
<u>Montclair Elementary School (17)</u>	\$26,093,784	\$3,593,852	13.77%	\$2,341,048	8.97%	\$5,934,900	22.74%	\$5,775,745	22.13%	\$493,707	1.89%	\$12,204,352	46.77%
<u>Mountain Island Lake Academy (17)</u>	\$12,203,059	\$153,353	1.26%	\$740,107	6.06%	\$893,460	7.32%	\$927,916	7.60%	\$15,300	0.13%	\$1,836,677	15.05%
<u>New Elementary School (Elon, Hawk R</u>	\$45,374,601	\$5,301,834	11.68%	\$1,556,777	3.43%	\$6,858,612	15.12%	\$10,724,805	23.64%	\$1,959,769	4.32%	\$19,543,186	43.07%
<u>North Academy of World Languages (</u>	\$38,354,285	\$1,770,068	4.62%	\$1,575,864	4.11%	\$3,345,931	8.72%	\$3,473,149	9.06%	\$436,793	1.14%	\$7,255,873	18.92%
<u>Northwest School of the Arts (17)</u>	\$9,006,565	\$0	0.00%	\$316,650	3.52%	\$316,650	3.52%	\$125,965	1.40%	\$0	0.00%	\$442,615	4.91%
<u>Palisades High School (17)</u>	\$98,181,004	\$13,482,757	13.73%	\$7,641,104	7.78%	\$21,123,862	21.52%	\$8,317,153	8.47%	\$7,698,589	7.84%	\$37,139,603	37.83%
<u>Shamrock Gardens Elementary School</u>	\$27,148,320	\$2,478,054	9.13%	\$1,636,383	6.03%	\$4,114,438	15.16%	\$21,128,435	77.83%	\$259,554	0.96%	\$25,502,427	93.94%
<u>Sharon Elementary School (17)</u>	\$8,534,491	\$326,844	3.83%	\$283,497	3.32%	\$610,341	7.15%	\$926,873	10.86%	\$217,984	2.55%	\$1,755,197	20.57%

Facility	Contract Amount	African American MBE\$	%	Other MBE \$	%	Total MBE \$	%	Other WBE \$	%	Other SBE \$	%	Total	%
<u>South Academy of International Langu</u>	\$37,153,679	\$6,023,142	16.21%	\$2,431,071	6.54%	\$8,454,213	22.75%	\$10,945,346	29.46%	\$313,999	0.85%	\$19,713,558	53.06%
<u>South Mecklenburg High School (17)</u>	\$15,574,341	\$420,088	2.70%	\$1,105,960	7.10%	\$1,526,048	9.80%	\$179,816	1.15%	\$0	0.00%	\$1,705,864	10.95%
<u>South Pine Academy (17)</u>	\$26,196,854	\$916,165	3.50%	\$19,052,520	72.73%	\$19,968,685	76.23%	\$4,342,256	16.58%	\$237,754	0.91%	\$24,548,695	93.71%
<u>West Charlotte High School (17)</u>	\$95,337,102	\$14,357,815	15.06%	\$5,218,058	5.47%	\$19,575,873	20.53%	\$65,599,651	68.81%	\$3,728,348	3.91%	\$88,903,872	93.25%
<u>West Mecklenburg High School (17)</u>	\$9,810,566	\$283,809	2.89%	\$509,403	5.19%	\$793,212	8.09%	\$1,255,006	12.79%	\$1,054,146	10.75%	\$3,102,365	31.62%
Grandtotal	\$902,951,425	\$86,134,612	9.54%	\$88,000,407	9.75%	\$174,135,019	19.29%	\$202,690,183	22.45%	\$32,236,605	3.57%	\$409,061,807	45.30%

MWSBE Participation 2017 Bond Projects



**Design and Construction
Contract Total
\$902,951,425**

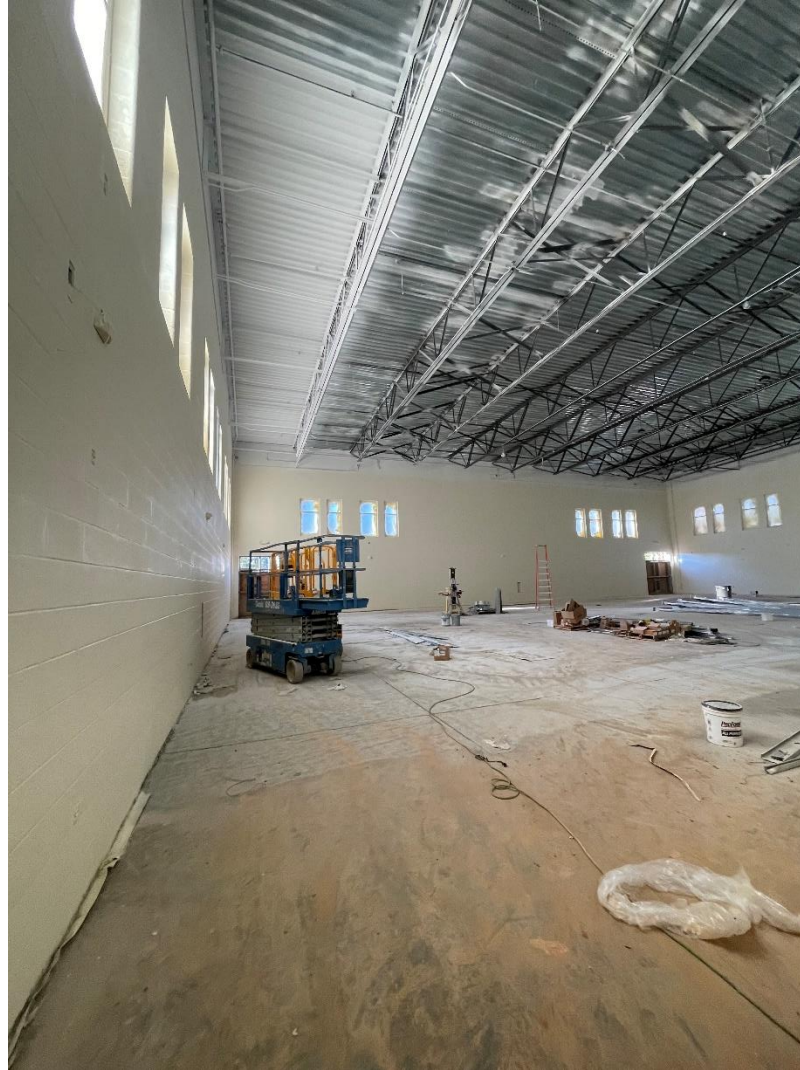
MONTHLY PROJECT PHOTOS



New ES Elon Park, Hawk Ridge, Polo Ridge



New ES Elon Park, Hawk Ridge, Polo Ridge



New ES Elon Park, Hawk Ridge, Polo Ridge



New ES Elon Park, Hawk Ridge, Polo Ridge

PROJECT PROGRESS PHOTOS



New HS Ardrey Kell, South Mecklenburg

PROJECT PROGRESS PHOTOS



New HS Ardrey Kell, South Mecklenburg

PROJECT PROGRESS PHOTOS



New HS Ardrey Kell, South Mecklenburg



New HS Ardrey Kell, South Mecklenburg



Bruns Elementary School Replacement



Bruns Elementary School Replacement



Bruns Elementary School Replacement



Northwest School of the Arts – Phase 2



Northwest School of the Arts – Phase 1



South Mecklenburg HS - Addition

PROJECT CONTROLS

**CHARLOTTE-MECKLENBURG BOARD OF EDUCATION
2013 BOND SERIES-CAPITAL IMPROVEMENT PROGRAMS
BUDGET STATUS REPORT**

	Original Project Budget	Current Project Budget	Committed Amount	Approved Change Orders	Total Committed	Pending Commitments	To Be Committed	Prev Paid To Date	Paid To Date	Balance To Complete	Monthly Expenditure
	(A)	(B)	(C)	(D)	(E)=C+D	(F)	(G)=(B-E-F)	(H)	(I)	(J)=(B-I)	(K)=(I-H)
<u>A. REPLACEMENT & RENOVATIONS</u>											
1 Career & Technology Education Institutes Phase 1:	\$8,640,000	\$20,274,950	\$8,352,614	\$11,886,062	\$20,238,676	\$0	\$36,275	\$20,238,674	\$20,238,674	\$36,277	\$0
2 Davidson K-8 Conversion	\$9,500,000	\$13,461,149	\$2,131,151	\$11,329,998	\$13,461,149	\$0	\$0	\$13,461,149	\$13,461,149	\$0	\$0
3 J.M. Alexander Middle Replacement	\$30,672,000	\$29,845,539	\$4,502,518	\$25,343,021	\$29,845,539	\$0	\$0	\$29,845,539	\$29,845,539	\$0	\$0
4 Nations Ford Elementary Replacement	\$19,440,000	\$19,231,604	\$3,958,871	\$15,272,733	\$19,231,604	\$0	\$0	\$19,231,604	\$19,231,604	\$0	\$0
5 Northwest School of the Arts	\$12,420,000	\$12,868,718	\$2,047,917	\$10,820,801	\$12,868,718	\$0	\$0	\$12,868,719	\$12,868,719	\$0	\$0
6 Oakhurst STEAM Magnet Elementary/Starmount	\$5,940,000	\$5,407,812	\$3,471,397	\$1,936,415	\$5,407,812	\$0	\$0	\$5,407,812	\$5,407,812	\$0	\$0
7 Pre-K-8 Conversions Phase II: Ashley Park/ Bruns	\$24,732,000	\$19,700,807	\$4,167,671	\$15,533,138	\$19,700,809	\$0	\$0	\$19,700,807	\$19,700,807	\$0	\$0
8 Selwyn Elementary	\$2,592,000	\$4,624,831	\$744,799	\$3,880,032	\$4,624,831	\$0	\$0	\$4,624,831	\$4,624,831	\$0	\$0
9 Statesville Road Elementary	\$20,340,000	\$20,648,509	\$5,081,473	\$15,567,037	\$20,648,509	\$0	\$0	\$20,648,509	\$20,648,509	\$0	\$0
10 West Mecklenburg HS	\$0	\$3,993,543	\$3,993,543	\$0	\$3,993,543	\$0	\$0	\$3,993,543	\$3,993,543	\$0	\$0
Total Replacement & Renovations	\$134,276,000	\$150,057,461	\$38,451,953	\$111,569,237	\$150,021,190	\$0	\$36,276	\$150,021,186	\$150,021,186	\$36,275	\$0
<u>B. RESPONSE TO ENROLLMENT GROWTH</u>											
1 East Mecklenburg High Addition	\$12,744,000	\$12,083,804	\$4,465,200	\$7,618,603	\$12,083,803	\$0	\$0	\$12,083,803	\$12,083,803	\$0	\$0
2 Myers Park High Addition	\$22,248,000	\$11,040,942	\$1,207,493	\$9,833,448	\$11,040,942	\$0	\$0	\$11,040,941	\$11,040,941	\$0	\$0
3 Northridge Middle Addition	\$6,448,000	\$6,366,170	\$2,114,306	\$4,251,865	\$6,366,171	\$0	\$0	\$6,366,171	\$6,366,171	\$0	\$0
4 Olympic High Addition/Renovation	\$8,964,000	\$8,947,310	\$2,002,694	\$6,944,615	\$8,947,310	\$0	\$0	\$8,947,310	\$8,947,310	\$0	\$0
5 South Mecklenburg High Addition	\$18,360,000	\$16,307,355	\$2,922,282	\$13,385,073	\$16,307,355	\$0	\$0	\$16,307,355	\$16,307,355	\$0	\$0
6 Charlotte East Language Academy (FKA -New Lang	\$30,376,000	\$31,387,929	\$5,740,182	\$25,647,747	\$31,387,929	\$0	\$0	\$31,387,929	\$31,387,929	\$0	\$0
7 Rea Farms STEAM Academy	\$31,376,000	\$38,898,906	\$9,077,465	\$29,821,441	\$38,898,906	\$0	\$0	\$38,898,906	\$38,898,906	\$0	\$0
8 Renaissance West STEAM Academy (FKA New Pre-	\$30,376,000	\$31,698,952	\$5,667,388	\$26,031,564	\$31,698,952	\$0	\$0	\$31,698,952	\$31,698,952	\$0	\$0
9 Ballantyne Ridge High School (FKA New HS South)	\$0	\$9,278,699	\$9,278,699	\$0	\$9,278,699	\$0	\$0	\$9,278,699	\$9,278,699	\$0	\$0
Total Response to Enrollment Growth	\$160,892,000	\$166,010,067	\$42,475,710	\$123,534,357	\$166,010,067	\$0	\$0	\$166,010,066	\$166,010,066	\$0	\$0
<u>C. CONTINGENCY</u>											
	\$0	\$0	\$0	\$0	\$0	\$0	\$0	\$0	\$0	\$0	\$0
Total Contingency	\$0	\$0	\$0	\$0	\$0	\$0	\$0	\$0	\$0	\$0	\$0
TOTAL LOCAL BOND PROGRAM	\$295,168,000	\$316,067,527	\$80,927,663	\$235,103,594	\$316,031,257	\$0	\$36,276	\$316,031,252	\$316,031,252	\$36,276	\$0

Original project estimated costs approved by the Board Of Education on July 23, 2013 and approved by the voters of Mecklenburg County on November 5, 2013.

Note: Mecklenburg County's appropriated interest from COPS to increase funding for the 2013 Bond Program.

**CHARLOTTE-MECKLENBURG BOARD OF EDUCATION
2017 BOND SERIES-CAPITAL IMPROVEMENT PROGRAMS
BUDGET STATUS REPORT**

	Original Project Budget	Current Project Budget	Committed Amount	Approved Change Orders	Total Committed	Pending Commitments	To Be Committed	Prev Paid To Date	Paid To Date	Balance To Complete	Monthly Expenditure
	(A)	(B)	(C)	(D)	(E)=C+D	(F)	(G)=(B-E-F)	(H)	(I)	(J)=(B-I)	(K)=(I-H)
<u>A. REPLACEMENT & RENOVATIONS</u>											
1 Briarwood Elementary *	\$29,091,619	\$31,243,066	\$4,730,710	\$26,410,339	\$31,141,049	\$0	\$102,017	\$31,135,878	\$31,136,083	\$106,983	\$205
2 Bruns Academy Replacement	\$34,207,808	\$48,859,580	\$5,669,623	\$42,406,336	\$48,075,959	\$6,061	\$777,561	\$16,576,992	\$19,477,701	\$29,381,879	\$2,900,709
3 Career & Technology Education Upgrades	\$10,101,734	\$6,984,007	\$3,665,595	\$3,318,588	\$6,984,183	\$0	\$0	\$6,984,007	\$6,984,007	\$0	\$0
4 Collinswood K-8 *	\$44,172,540	\$41,401,384	\$4,916,632	\$36,484,752	\$41,401,384	\$0	\$0	\$41,401,384	\$41,401,384	\$0	\$0
5 East Mecklenburg HS	\$12,771,594	\$10,231,911	(\$1,659,510)	\$11,823,832	\$10,164,322	\$0	\$67,590	\$10,141,268	\$10,141,268	\$90,643	\$0
6 Garinger HS	\$13,936,979	\$5,236,979	\$666,118	\$3,534,819	\$4,200,936	\$0	\$1,036,043	\$3,795,726	\$3,907,218	\$1,329,761	\$111,492
7 Harding University High *	\$18,330,263	\$13,747,878	\$2,045,267	\$11,702,610	\$13,747,877	\$0	\$0	\$13,747,877	\$13,747,877	\$0	\$0
8 Charlotte-Mecklenburg Academy (FKA -EC Specialty	\$18,957,960	\$17,699,220	\$2,175,504	\$15,523,717	\$17,699,220	\$0	\$0	\$17,699,220	\$17,699,220	\$0	\$0
9 Lansdowne Elementary	\$29,391,270	\$33,554,188	\$3,974,822	\$29,426,290	\$33,401,113	\$41,075	\$112,001	\$32,459,639	\$32,707,717	\$846,471	\$248,079
10 Lincoln Heights Elementary	\$3,740,478	\$4,588,675	\$2,823,274	\$817,550	\$3,640,824	\$17,000	\$930,851	\$2,904,307	\$2,950,546	\$1,638,129	\$46,239
11 Montclair Elementary Replacement *	\$28,559,390	\$28,200,634	\$2,426,761	\$25,773,873	\$28,200,634	\$0	\$0	\$28,200,634	\$28,200,634	\$0	\$0
12 Mountain Island k-8	\$9,218,439	\$13,239,686	\$1,657,774	\$11,418,864	\$13,076,638	\$12,000	\$151,048	\$11,386,427	\$12,130,479	\$1,109,207	\$744,052
13 Northwest School of the Arts	\$17,632,202	\$12,167,000	\$5,238,029	\$4,700,259	\$9,938,288	\$0	\$2,228,712	\$3,674,653	\$4,332,163	\$7,834,837	\$657,511
14 Shamrock Gardens Elementary *	\$29,890,351	\$30,084,692	\$3,422,159	\$26,430,489	\$29,852,647	\$0	\$232,045	\$29,503,844	\$29,757,027	\$327,665	\$253,183
15 Sharon Elementary	\$7,706,528	\$9,125,862	\$1,430,125	\$7,675,679	\$9,105,804	\$0	\$20,058	\$9,079,791	\$9,079,791	\$46,071	\$0
16 South Mecklenburg HS	\$13,352,143	\$17,322,927	\$2,064,209	\$14,216,781	\$16,280,990	\$0	\$1,041,937	\$1,202,129	\$1,546,943	\$15,775,984	\$344,814
17 E.E. Waddell Magnet HS	\$4,571,709	\$5,137,367	\$2,945,755	\$356,383	\$3,302,138	\$0	\$1,835,229	\$2,812,501	\$2,838,348	\$2,299,019	\$25,847
18 West Charlotte HS Replacement	\$109,977,166	\$104,413,163	\$11,785,365	\$91,554,295	\$103,339,661	\$25,900	\$1,047,602	\$101,480,648	\$101,537,424	\$2,875,738	\$56,776
19 West Mecklenburg HS	\$11,065,440	\$6,260,654	(\$2,370,464)	\$8,631,118	\$6,260,654	\$0	\$0	\$6,260,654	\$6,260,654	\$0	\$0
20 John Taylor Williams	\$13,964,339	\$17,032,600	\$3,533,610	\$12,492,488	\$16,026,099	\$0	\$1,006,501	\$14,004,601	\$14,826,456	\$2,206,144	\$821,855
Total Replacement & Renovations	\$460,639,952	\$456,531,473	\$61,141,359	\$384,699,061	\$445,840,420	\$102,035	\$10,589,194	\$384,452,182	\$390,662,943	\$65,868,531	\$6,210,761
<u>B. RESPONSE TO ENROLLMENT GROWTH</u>											
1 South Academy of International Languages	\$45,359,367	\$40,669,909	\$5,969,503	\$34,700,138	\$40,669,641	\$0	\$268	\$40,586,977	\$40,586,977	\$82,932	\$0
2 North Academy of World Languages (FKA - New K-8	\$45,359,367	\$41,742,062	\$6,024,166	\$35,717,896	\$41,742,062	\$0	\$0	\$41,742,062	\$41,742,062	\$0	\$0
3 South Pine Academy (FKA - New ES Nations Ford, S	\$29,173,829	\$30,477,421	\$6,883,836	\$23,593,585	\$30,477,421	\$0	\$0	\$30,477,421	\$30,477,421	\$0	\$0
4 Mint Hill Elementary School	\$29,988,332	\$29,480,274	\$3,296,439	\$25,950,837	\$29,247,276	\$0	\$232,998	\$29,024,329	\$29,025,246	\$455,028	\$917
5 Esperanza Global Academy (FKA New ES - Windsor	\$30,422,230	\$45,297,022	\$13,211,395	\$31,553,502	\$44,764,897	\$61,473	\$470,652	\$40,279,500	\$40,413,685	\$4,883,337	\$134,184
6 New Elementary School - Elon/Hawk Ridge Relief *	\$30,426,712	\$60,641,761	\$16,350,121	\$43,557,251	\$59,907,371	\$190,749	\$543,640	\$43,268,906	\$45,018,066	\$15,623,694	\$1,749,160
7 Grove Park Elementary (FKA New ES - Hidden Valle	\$30,518,345	\$44,079,387	\$6,366,205	\$36,697,109	\$43,063,315	\$29,500	\$986,573	\$38,531,113	\$39,094,792	\$4,984,595	\$563,679
8 Palisades High School	\$109,908,793	\$107,592,534	\$10,856,885	\$96,372,205	\$107,229,090	\$20,042	\$343,402	\$105,696,283	\$105,700,348	\$1,892,186	\$4,065
9 Ballantyne Ridge High School (FKA New HS South)	\$110,287,621	\$148,962,116	\$15,155,270	\$130,671,339	\$145,826,608	\$663,270	\$2,472,237	\$80,320,459	\$87,221,321	\$61,740,795	\$6,900,861
Total Response to Enrollment Growth	\$461,444,596	\$548,942,486	\$84,113,820	\$458,813,861	\$542,927,681	\$965,035	\$5,049,770	\$449,927,052	\$459,279,918	\$89,662,568	\$9,352,867
<u>C. CONTINGENCY</u>											
	\$0	\$0	\$0	\$0	\$0	\$0	\$0	\$0	\$0	\$0	\$0
Total Contingency	\$0	\$0	\$0	\$0	\$0	\$0	\$0	\$0	\$0	\$0	\$0

**CHARLOTTE-MECKLENBURG BOARD OF EDUCATION
2017 BOND SERIES-CAPITAL IMPROVEMENT PROGRAMS
BUDGET STATUS REPORT**

	Original Project Budget	Current Project Budget	Committed Amount	Approved Change Orders	Total Committed	Pending Commitments	To Be Committed	Prev Paid To Date	Paid To Date	Balance To Complete	Monthly Expenditure
	(A)	(B)	(C)	(D)	(E)=C+D	(F)	(G)=(B-E-F)	(H)	(I)	(J)=(B-I)	(K)=(I-H)
TOTAL LOCAL BOND PROGRAM	\$922,084,548	\$1,005,473,960	\$145,255,179	\$843,512,923	\$988,768,101	\$1,067,070	\$15,638,963	\$834,379,233	\$849,942,861	\$155,531,098	\$15,563,628

Original project estimated costs approved by the Board Of Education on July 25, 2017 approved by the voters of Mecklenburg County on November 7, 2017.

*Project included in \$33.2M early funding approved by Board Of Education on August 9, 2016 and Mecklenburg Board of County Commissioners on September 6, 2016. On February 19, 2019 an additional \$8M was approved for New Elementary School - Elon/Hawk Ridge Relief site.

*Current Budget includes an additional \$89.2M to fund increase land and construction costs. The additional funds were approved by the Board of County Commissioners on June 16, 2020.

The New Elementary School - Elon/Hawk Ridge Relief current Budget includes 6.8M for Park and Recreation Project.

Bruns Academy Replacement current budget includes \$1.5M for Park and Recreation Project.

Current Program Budget reflects a reclass of \$7.4M in expenditures to 2007 Bond Program and \$14.4M in expenditures to 2013 Bond Program.

**CHARLOTTE-MECKLENBURG BOARD OF EDUCATION
FY 2024 CAPITAL IMPROVEMENT PROGRAMS
BUDGET STATUS REPORT**

	Original Project Budget	Current Project Budget	Committed Amount	Approved Change Orders	Total Committed	Pending Commitments	To Be Committed	Prev Paid To Date	Paid To Date	Balance To Complete	Monthly Expenditure
	(A)	(B)	(C)	(D)	(E)=C+D	(F)	(G)=(B-E-F)	(H)	(I)	(J)=(B-I)	(K)=(I-H)
<u>A. REPLACEMENT & RENOVATIONS</u>											
1 Cotswold Elementary School - Onsite Replacement	\$80,555,856	\$80,555,856	\$6,595,663	\$0	\$6,595,663	\$0	\$73,960,193	\$0	\$0	\$80,555,856	\$0
2 Marie G Davis Montessori Upfit	\$9,174,783	\$9,174,783	\$781,853	\$0	\$781,853	\$0	\$8,392,930	\$0	\$0	\$9,174,783	\$0
3 North Mecklenburg High School Replacement	\$228,464,171	\$228,464,171	\$18,769,701	\$0	\$18,769,701	\$0	\$209,694,470	\$0	\$31,120	\$228,433,051	\$31,120
4 Northwest School of the Arts/First Ward	\$93,654,147	\$93,654,147	\$5,073,792	\$0	\$5,073,792	\$0	\$88,580,355	\$0	\$0	\$93,654,147	\$0
5 Park Road ES/Dilworth Latta/Sedgefield	\$89,491,970	\$89,491,970	\$7,600,578	\$0	\$7,600,578	\$0	\$81,900,499	\$36,625	\$66,529	\$89,425,441	\$29,904
6 South Mecklenburg High School Replacement	\$127,909,253	\$127,909,253	\$11,327,999	\$0	\$11,327,999	\$0	\$116,581,254	\$0	\$0	\$127,909,253	\$0
Total Replacement & Renovations	\$629,250,180	\$629,250,180	\$50,149,586	\$0	\$50,149,586	\$0	\$579,109,701	\$36,625	\$97,649	\$629,152,531	\$61,024
<u>B. RESPONSE TO ENROLLMENT GROWTH</u>											
1 New South MS#1 - Cato Property	\$101,089,262	\$101,089,262	\$7,811,965	\$0	\$7,811,965	\$0	\$93,277,297	\$128,250	\$276,750	\$100,812,512	\$148,500
2 New Second Ward High School	\$176,810,460	\$176,810,460	\$15,304,634	\$0	\$15,304,634	\$0	\$161,505,826	\$0	\$0	\$176,810,460	\$0
Total Response to Enrollment Growth	\$277,899,722	\$277,899,722	\$23,116,599	\$0	\$23,116,599	\$0	\$254,783,123	\$128,250	\$276,750	\$277,622,972	\$148,500
	\$907,149,902	\$907,149,902	\$73,266,185	\$0	\$73,266,185	\$0	\$833,892,824	\$164,875	\$374,399	\$906,775,503	\$209,524

Original Budget Project costs approved and authorized by the Board of County Commissioners on June 6, 2023.

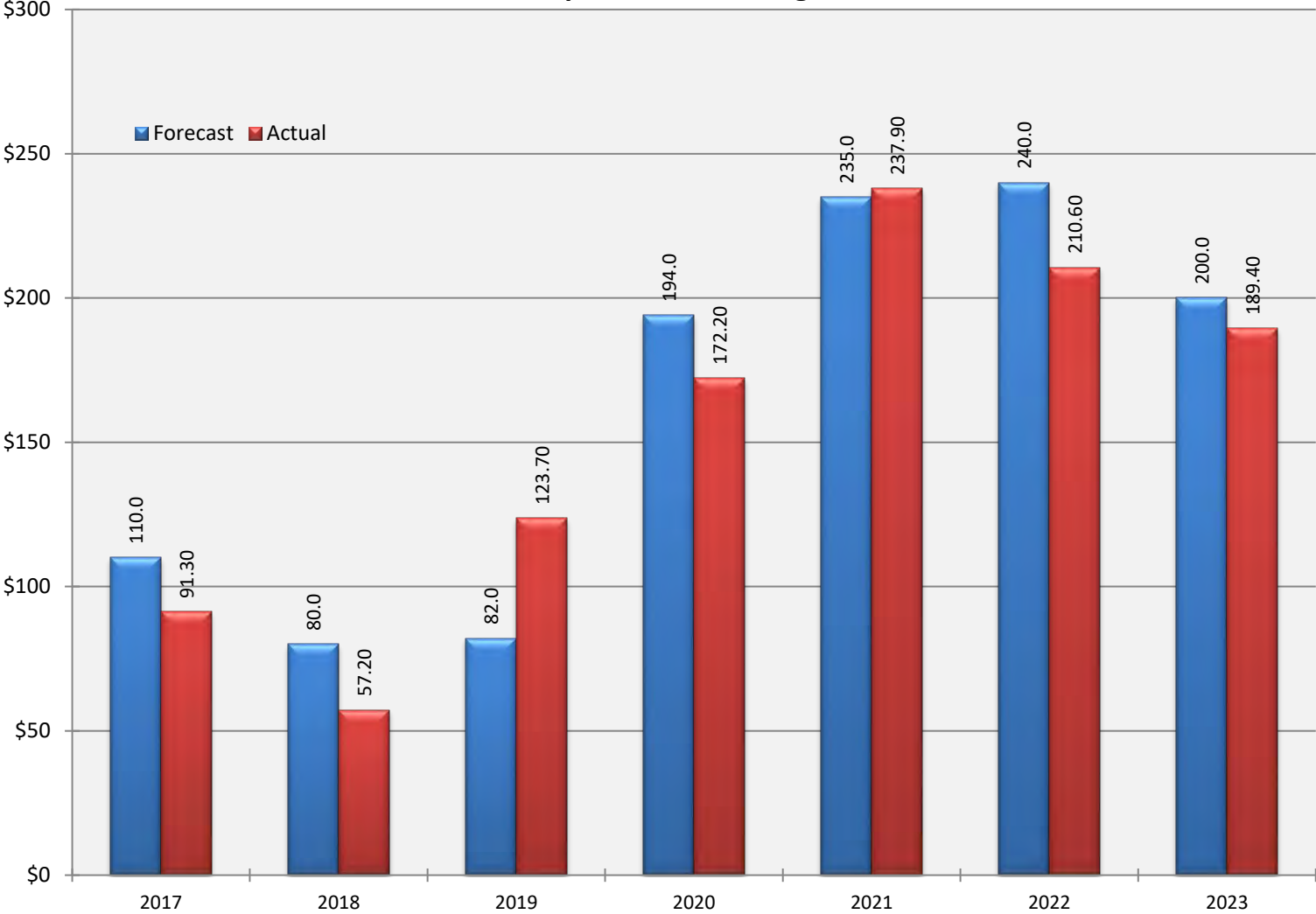
Charlotte-Mecklenburg Board of Education
Approved Construction or Repair Change Orders*
Reporting Period: November 2023

Funding Source	Project Name	Contractor	Description	Change Order Amount	Revised Contract Value
None this reporting period					

* Not previously presented to the Board of Education for Approval (less than \$90,000)

EXPENDITURE SUMMARY

Forecast Expenditure versus
Actual Expenditures through November 2023



GLOSSARY

Glossary

- **Project Management** – This section includes updates from our project managers and describes the currently active construction projects. This includes from Board of Education award thru final completion.
- **Design and Bidding** – This section contains updates from our design managers on the projects currently in the design phase. This phase from design award to Board of Education award of construction.
- **Controls** – Section includes misc. updates from controls group including expenditures, related Board of Education awards during the reporting period, cash flow information. This section covers all projects from approved bond through final expenditures and bond close with the county.
- **MWSBE** – Contains updates from the MWSBE Director and team, including current activity and summaries of the participation by MWSBE providers on our program.
- **Bond Progress Summary** – Provides a summary of bond financials including bond value, committed/pending amounts, paid to date, expended this month.
- **Project Procurement Dates** - Next 90 Days major project bid activity.
- **Mobile Swing Space Utilization** – Includes a summary of program related swing space currently in use and the schedule of use.
- **Bond Summary Schedule** – Current program summary schedule including planned design, construction and FF&E. These activities are fed from detailed schedules and are fine-tuned as project information is available.
- **Project Contractor Teams**; Provides summary of turnover dates for completed/closed projects since 2010 including architects/designers and contractors.
- **School Site Location Maps** – General location of bond projects (2017) by type.
- **Project Status Report** – This section of the report provides a summary of the bond project scope, current estimate (all sources), planned occupancy/actual occupancy date. It also provides a current status of the design phase, construction progress and a brief update. The report currently includes 2013 and 2017 bond projects that have or will be completed after to August 2016.
- **MWSBE Participation Report** – The MWSBE report provides a summary of the participation on the 2013 & 2017 Bond funded projects.
- **Project Progress Photos** – Includes photos of active construction projects.
- **Budget Summary Reports** – These reports are by funding source and summarize financial activity to date on the projects. This includes original and current project estimates, committed values, amounts paid to date, balances and monthly expenditures.
- **Change Orders < \$90,000** – This month's approved construction or repair change orders < \$90,000.
- **Expenditure Summary** – Provides a summary of Bond Expenditures by calendar year.