

FEBRUARY 2024

# BOND REPORT



## **CAPITAL PROGRAM SERVICES** Capital Improvement Program

### **FEBRUARY 2024** MONTHLY BOND REPORT

#### **PROGRAM OVERVIEW**

- Project Management
- Design and Bidding
- Controls
- MWSBE
- Bond Progress Summary
- Project Procurement - Next 90 Days
- Bond Summary Schedule
- Project Contractor Teams; Projects in Design/Construction and Substantially Completed/Closed
- School Site Location Maps
  - Elementary Schools
  - Middle Schools
  - High Schools & Specialty Schools

#### **PROJECT STATUS REPORT**

#### **MWSBE PARTICIPATION REPORT**

#### **PROJECT PROGRESS PHOTOS**

#### **PROJECT CONTROLS**

- Budget Summary Reports
  - 2017 Bond Series
  - 2023 Bond Series
- Change Orders < \$90,000
- Expenditure Summary

#### **GLOSSARY**

# PROGRAM OVERVIEW

## PROJECT MANAGEMENT

The following is a summary of the activity on the bond-funded projects in construction during the month of February.

The **Bruns Avenue Elementary School Replacement** project team worked toward enclosing the remaining areas with window and storefront systems. Mechanical, electrical, and plumbing (MEP) trades continued with their overhead and in wall rough-in throughout the building in preparation for ceiling grid and wall closures. The mason continued with exterior brick veneer and finalizing interior CMU installations. The main electrical and mechanical room component installation progressed well over the last month with boilers, pumps, and main electrical panels. The project team continues to monitor the delayed delivery of the other two AHU's and is working on a contingency plan to limit impacts. Scheduled occupancy is August 2024. Demolition of the old building and associated site work will commence once the new building is occupied.

The **New Ballantyne Ridge High School** project team continued coordinating the numerous trades on site. The mason continued with interior CMU and brick veneer installation throughout the building. Spray fireproofing continued on the fourth floor of the classroom wing and second floor media center space. Interior metal stud installations continued on the fourth floor in the classroom wing. Drywall installations continued in the classroom wing and fourth floor. The second and third floor drywall has been completed. The MEP trades are following the interior stud installation with in-wall and above ceiling rough-in. Current work on the site includes final grading, roadwork, site concrete and landscaping. Charlotte Water and Duke Power have provided permanent water and power to the building. The new 100-classroom relief high school scheduled occupancy is August 2024.

The **New Knights View Elementary School** (*fka Elon, Hawk Ridge, Polo Relief*) finish trades continued with casework, VCT flooring and marker/tack board throughout the building. The Ardrey Kell roadwork asphalt and striping have been completed leaving only the signalization to be completed. The striping and signage of Beau Riley Road was also completed. The long awaited air handler (unit five) components began arriving this month. The Recreation Center gym floor is being installed. The new 45-classroom elementary school is located across from the Ardrey Kell High School and is scheduled occupancy is August 2024.

The **Northwest School of the Arts** construction team continued with the removal of the existing parking lot in preparation for the new utility tie-ins. The Phase 1 scope includes an underground storm water detention system and new car parking lot in preparation for the new building in Phase 2.

The **South Mecklenburg High School** construction team completed underground slab rough-in and poured the slab on grade. The structural steel framing was delivered and erection is ongoing. The decking for second floor also started. The new 19-classroom building will house JROTC and Arts. The new classroom wing is scheduled for occupancy January 2025.

## DESIGN AND BIDDING

The following is a summary of the activity on the bond-funded projects in design and bidding phase during the month of February.

### Cotswold ES/Billingsville (23)

**Cotswold Elementary Replacement School** due diligence activities in the field are complete and final reports under development. The design and CMS leadership meetings will be scheduled in the first quarter of 2024.

**Billingsville Montessori Upfit** project's design kick-off meeting is scheduled in March.

**Marie G. Davis Montessori Upfit** due diligence activities continue to progress and the architect's schematic design submittal has been received and in review. CMS Leadership review of this submission will be issued in March.

The **New Second Ward High School** pre-design deliverable continues to progress and is due for CMS review in March.

The **New South Middle School 1** architect continues to collaborate with Capital Program Services, CMS Planning and Real Estate Department to develop the required rezoning submittal drawings. Currently six revisions have been developed and reviewed. Design development phase documents will be issued to the CMS Leadership Team for review comments in the month of March.

The **North Mecklenburg High School Replacement** project continues developing site plan schemes that coordinate with the Town of Huntersville planning and zoning ordinances. These various plans are being reviewed by CMS for final direction prior to presenting to the Town of Huntersville. The pre-schematic design deliverable was received and comments returned to the architect. Survey work is complete and provided to the Architect. Geo-technical investigations continue to progress.

#### **Northwest School of the Arts/First Ward**

The **First Ward Arts Middle School Magnet** project has completed schematic design phase. The design team conducted two CMS Leadership focus meetings to help address specific educational program requirements. The architect submitted the schematic design submittal. This document was reviewed by CMS and comments returned to the architect. The project has now progressed into the design development phase. Follow up CMS Leadership meetings will be in March.

The **Northwest School of the Arts Phase 2** design documents have been submitted to LUESA for review and approval of a building permit. The construction manager has finalized the bid manual, logistic plan and schedule and has issued the project for bid in March. Phase 2 scope includes a new administration, visual/performing arts building and campus renovations.

#### **Park Road ES/Dilworth Latta/Sedgefield**

The designer for the **New Park Road Elementary School** project has delivered schematic design phase documents to CMS for review and comment. CMS Leadership review of these documents will be available for comments in March.

The **Dilworth Latta** project is scheduled to start design in 3rd quarter 2024.

The **Sedgefield Elementary School Montessori Upfit** project scope includes the incorporation of life skills classrooms, security vestibule, general up fits/renovations to the main building, and site enhancements. Permit drawings are scheduled for permit review in April. Follow-up meetings with CMS leadership continue to be conducted to review and confirm the design direction and schedule to complete the work.

The **South Mecklenburg High School Replacement** project continues to progress in the schematic design phase.

## CONTROLS

Expenditures for the month of February were \$10.9M. This brings our fiscal year to date total to \$115.7M against the 2024 fiscal year cash flow projection of \$165M. The Controls team has set up the budgets for the \$2.5 billion dollar 2023 Bond program approved by the voters of Mecklenburg County on November 7, 2023. The Controls team also continues the reconciliation and closeout of completed 2017 bond projects. Completed purchase orders are being

closed. Available funding identified from completed purchase orders are being accumulated for use on future capital needs.

The Controls team continues to submit notices of potential changes at school sites so senior staff can adequately evaluate any issues. Additionally, the Controls team continues the processing of contracts, invoices, preparing notices of potential change, change orders, pay applications, and check requests for projects under construction. Captured construction cost data is used to prepare financial reports such as detailed cost reports, budget summaries, reconciliation to CMS books, revisions to and updated cash flows and complete special financial requests by CMS and Mecklenburg County. This process, along with data compilation and management, allows senior staff to provide the proper guidance/direction and accurate information to the program.

No Bond related consent items were submitted for Board of Education approval during the month of February.

## MWSBE

As of February 2024 the overall MWSBE utilization percentage related to design and construction of the 2017 bond projects is \$409,989,028 (47.47%) which includes \$174,756,243 (19.38%) participation by minority contractors, \$202,946,545 (22.51%) by women contractors and \$32,286,240 (3.58%) participation by small business contractors. This accounts for more than \$409 million of utilization by Minority, Women and Small Business Contractors

The overall MWSBE utilization percentage related to design and construction of the 2023 bond projects is \$3,764,076 (10.69%) which includes \$1,389,350 (3.94%) participation by minority contractors, \$1,646,725 (4.67%) by women contractors and \$728,000 (2.07%) participation by small business contractors. This accounts for more than \$3.7 million of utilization by Minority, Women and Small Business Contractors

The Diversity, Equity & Inclusion team members conducted several individual virtual orientations with new MWSBE contractors and prime contractors. In addition, team members also attended/hosted the following outreach sessions/pre-bid meetings and/or workforce development opportunities:

### Outreach Sessions:

- Supplier Diversity Roundtable
- United Minority Contractors of North Carolina Industry Day
- Construction Outreach Event – UNC Charlotte
- Carolinas Virginia Minority Supplier Development Council Annual Meeting and Proforum
- Bid Opening – CMS Student and Family Support Center

### Workforce Development Opportunities:

The CMS Career & Technical Education (CTE) office has created nineteen (19) career pathways to allow students to explore career interests. CTE students are given the opportunity to receive industry-recognized certifications, earn credit towards postsecondary degrees or begin careers after graduation. In order for CMS to deliver a diverse and inclusive workforce to meet the growing needs in the community, opportunities for our future workforce are needed. Historically, CMS has partnered with the City of Charlotte Mayor's Youth Employment Program (MYEP) to provide career and professional development experiences for our students.

As a part of our CMS Workforce Development Program, CMS students have the opportunity to participate in internships, shadowing learning opportunities and participate in career fairs as a key component of exposing students to relevant real life career experiences. We continue to work with Sterling Oliver, MYEP Youth Program Specialist, to assist in matching students with internship opportunities. The CMS Diversity, Equity and Inclusion team and

project management team members continue to assist and Architects and CMs in the collaboration with Workforce Development providers (such as CPCC, Charlotte Works, Goodwill, Urban League, etc.) and incorporate plans and goals into each project.

Over the next month, team members will continue to work with contractors interested in bidding on the upcoming school projects utilizing various virtual tools to communicate. Contractors are encouraged to review bid advertisements in Charlotte Observer and register as a vendor on the North Carolina electronic Vendor Portal (eVP) for notification of the various opportunities.

## BOND PROGRESS SUMMARY As of February 2024

Funding Source and Value		Amount Committed/Pending	Amount Paid to Date	Amount Expended This Period
'17 Bond	\$1,005,473,959	\$988,610,492	\$882,750,800	\$10,121,054
'23 Bond	\$2,500,000,000	\$73,474,366	\$2,304,593	\$777,905
<b>Grand Total</b>	<b>\$3,505,473,959</b>	<b>\$1,062,084,858</b>	<b>\$885,055,393</b>	<b>\$10,898,959</b>



## UPCOMING MAJOR CONSTRUCTION PROCUREMENT DATES *Three-Month Look Ahead*

### **School Name**

Northwest School of the Arts (Phase 2)  
*Managed by CM (Balfour Beatty)*

### **Bid Period\***

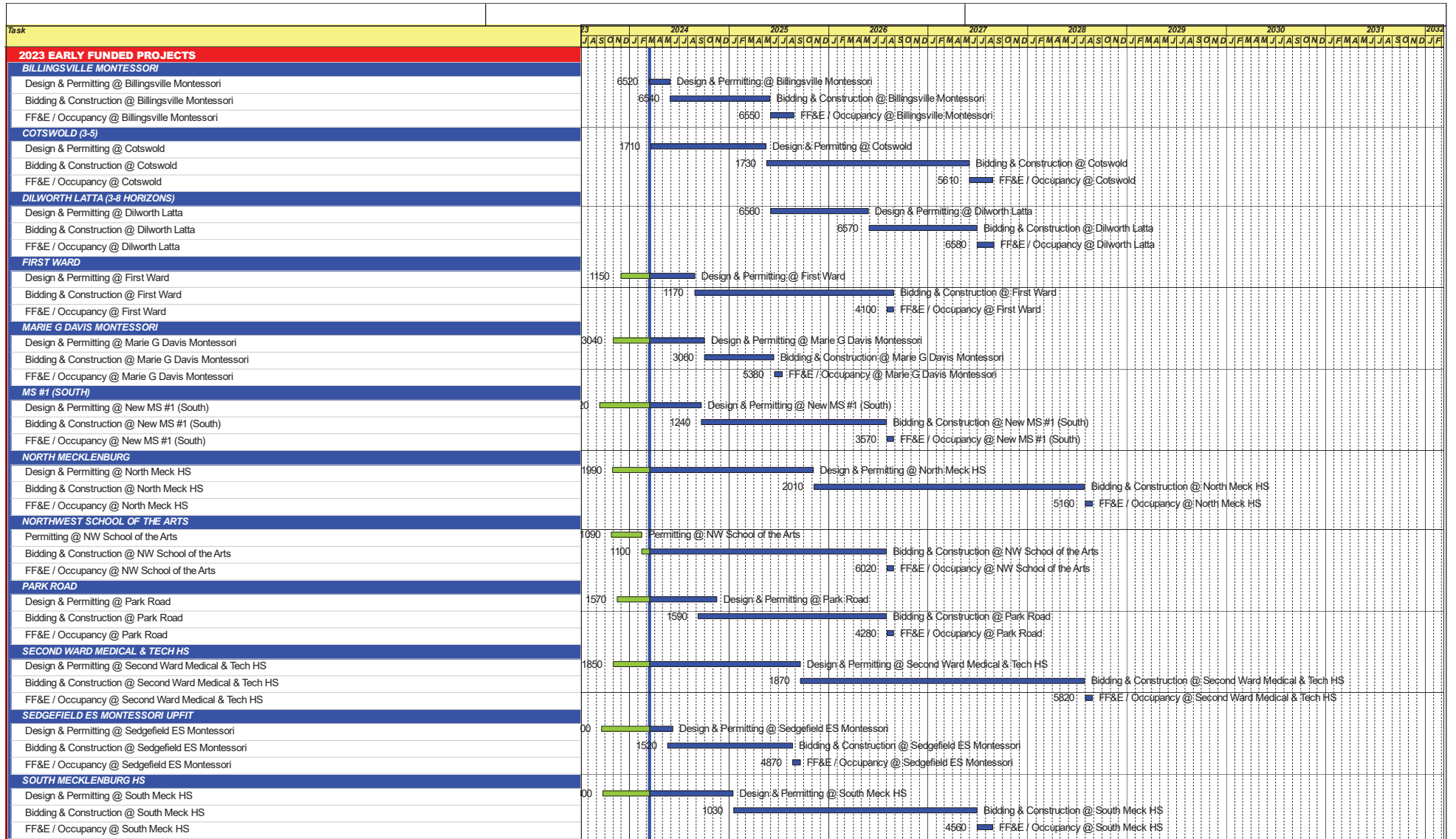
February 12 – March 27

\* *NOTE: Work In Progress...Dates Subject to Change.*









VERSION 25-Mar-24  
DATA DATE 13-Mar-24

**CMS 2023 Bond Capital Improvement Plan Update  
Through Feb-24**

**Capital Improvements Program**  
*Projects in Design or Under Construction*

School	Architect	General Contractor/CM
<b>Projects In Design</b>		
Cotswold /Billingsville		
Billingsville Montessori Upfit (23)	WHN	Clancy & Theys with Danelle Co.
Cotswold Elementary Replacement School (23)	Little Diversified	Clancy & Theys with Danelle Co.
Northwest School of the Arts/First Ward		
Northwest School of the Arts Renovation/Addition (17 & 23)	LS3P	Balfour Beatty
First Ward Elementary School Renovations (23)	Boomerang	Edifice, Inc.
Marie G. Davis Montessori Upfit (23)	MPS	TBD
New Second Ward High School (23)	LS3P	Rodgers Builders with Walter B. Davis Co.
New South MS 1 (23)	HCM	Messer
North Mecklenburg High School Replacement (23)	ADW	New Atlantic
Park Road ES/Dilworth Latta/Sedgefield		
Park Road Elementary School (23)	Ratio	Vannoy-McFarland JV
Sedgefield Elementary School Montessori Upfit (23)	WHN	Vannoy-McFarland JV
South Mecklenburg High School Replacement (23)	Morris Berg	Whiting-Turner
<b>Projects in Bid/Award/Construction Phase</b>		
Ballantyne Ridge HS (17)	Ratio	Messer
New ES (Elon,Hawk Ridge, Polo Ridge) (17)	Little Diversified	Balfour Beatty
New Bruns Avenue ES (17)	ADW	Edifice, Inc.
Northwest School of the Arts Addition (17)	LS3P	Balfour Beatty
South Mecklenburg High School Addition (17)	Morris Berg	Balfour Beatty




**Capital Improvements Program**  
***Projects Substantially Completed/Closed*** \*

School	Turnover Year	Architect	General Contractor
J.T. Williams (17)	Aug-23	FWA	New Atlantic Contracting
Lincoln Heights Repurpose (17)	Aug-23	Neighboring Concepts	Randolph & Sons
Mountain Island School (17)	Aug-23	ADW	Whiting-Turner
Grove Park ES (17)	Aug-23	ADW	Edifice, Inc.
Esperanza Global Academy (17)	Aug-23	Neighboring Concepts	Rodgers-Holt Brothers
E.E. Waddell (17)	Jan-23	Moseley	Randolph & Sons Builders
Garinger Addition/Renovation & CTE (17)	Jan-23	LS3P	Balfour Beatty
West Charlotte High School (17)	Aug-22	LS3P	Rodgers-Holt Brothers
Lansdowne Elementary School Replacement (17)	Aug-22	Perkins Eastman	Edifice, Inc.
Palisades High School (Olympic Relief) (17)	Aug-22	Little Diversified	Edifice, Inc.
Shamrock Gardens Elementary School Replacement (17)	Aug-22	Little Diversified	Rodgers-Holt Brothers
Mint Hill ES (17) <i>(fka Bain, Lebanon Rd, Piney Grove)</i>	Aug-22	FWA	Metcon
East Mecklenburg High School (17)	May-22	Morris Berg	Turner Construction
CTE (Harding, Olympic, South) (17)	Jan-22	MPS	Branch Brownstone
Briarwood Elementary School Replacement (17)	Aug-21	ADW	New Atlantic Contracting
North Academy of World Languages (17)	Aug-21	ADW	New Atlantic Contracting
Sharon Elementary School (17)	Aug-21	Clark Nexsen	Samet
South Academy of International Languages (17)	Aug-21	FWA	Messer Construction
South Pine Academy (17)	Aug-21	FWA	Metcon
West Mecklenburg Gym (17)	Aug-21	Moseley	Barnhill/D.A. Everett
Montclair Elementary School (17)	Aug-20	WHN	Messer Construction
Collinswood Language Academy (17)	Aug-20	Perkins Eastman	Turner Construction
Harding High School Renovation (17)	Aug-20	SFLA	Barnhill Contracting
Rea Farms STEAM Academy (13)	Aug-20	Little Diversified	Balfour Beatty
Ashley Park K-8 Conversion (13)	Aug-19	ADW	Turner Construction
Druid Hills K-8 Conversion (13)	Aug-19	ADW	Edifice, Inc.
Selwyn Elementary (13)	Aug-19	Clark Nexsen	Balfour Beatty
Charlotte Mecklenburg Academy (17)	Aug-19	KSQ	Edifice, Inc.
Davidson K-8 (13)	Aug-19	Little Diversified	Gilbane
CTE - North Mecklenburg High (13)	Aug-19	LS3P	Shiel Sexton
CTE - Garinger (13)	Mar-19	LS3P	Hostetter & Son
CTE - Independence (13)	Mar-19	LS3P	D.E. Brown
CTE - West Mecklenburg (13)	Mar-19	LS3P	Hostetter & Son
Charlotte East Language Academy (13)	Aug-18	Morris Berg	Edifice, Inc
Myers Park High School Phase 3 (13)	Aug-18	Boomerang Design	BE&K
Northridge Middle (13)	Aug-18	Morris Berg	Barnhill Contracting
Myers Park High Bldg 2 (13)	Feb-18	Boomerang Design	BE&K
East Mecklenburg High Addition (13)	Jan-18	Bergman (fna Gantt Huberman)	Edifice, Inc.
J.M. Alexander Middle (13)	Aug-17	FWA Group	Balfour Beatty
Northwest School of the Arts Renovation (13)	Aug-17	Moseley	Turner Construction
Renaissance West STEAM Academy (13)	Aug-17	Little Diversified	Rodgers Construction
South Mecklenburg High Addition (13)	Jul-17	SFLA	Barnhill Contracting
Myers Park High Bldg 1 (13)	Sep-16	Boomerang	KBR
Statesville Road Elementary (13)	Aug-16	ADW	JE Dunn
Nations Ford Elementary (13)	Aug-16	Wash Hatem Nelson	Messer Construction
Olympic High Addition (13)	Aug-16	McMillan, Pazdan, Smith	Turner Construction
Lawrence Orr Elementary (07)	Aug-15	Cort Architectural Group	DH Griffin/Metcon
Parkside Elementary (07)	Aug-15	Wash Hatem Nelson	Clancy & Theys
Hawthorne High Renovations (07)	Aug-15	Morris-Berg	Balfour Beatty
Newell Elementary (07)	Aug-15	Perkins Eastman	New Atlantic Contracting
Ranson Middle (07)	Aug-15	Morris-Berg	Edifice, Inc.
Vance High	Jan-15	LS3P	Matthews Construction Co., Inc.




Projects closed prior to 2015 are not shown

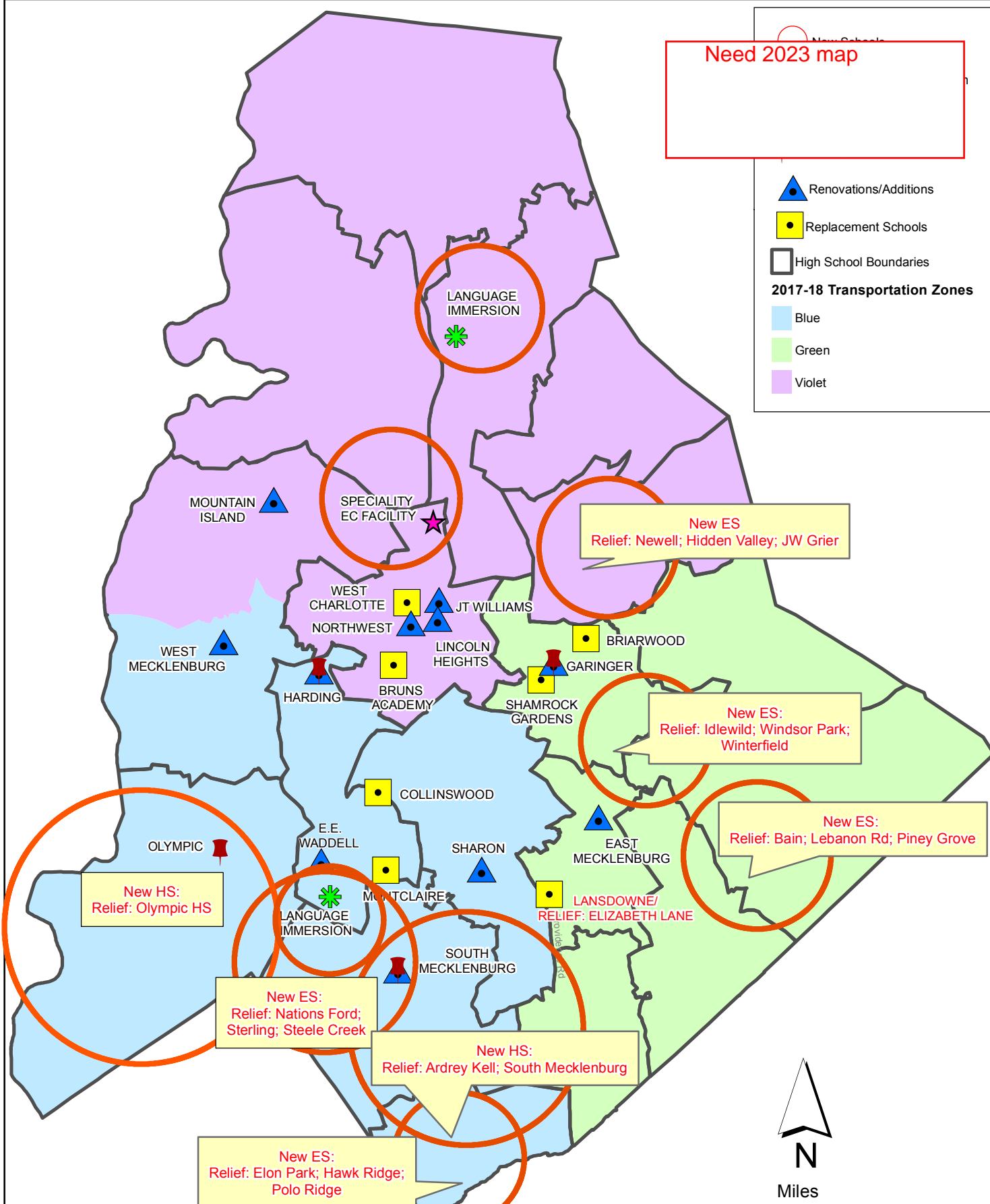
# CMS Capital Improvement Plan 2017 Bond Projects

Need 2023 map

-  Renovations/Additions
-  Replacement Schools
-  High School Boundaries

**2017-18 Transportation Zones**

-  Blue
-  Green
-  Violet





# PROJECT STATUS REPORT



## Monthly Project Status 2017 and 2023 Bond Summary February 2024

Project	Project Scope	** Occupy On	Design Phase	Construction Progress	Project Status
Albemarle Road Middle School (23)	Onsite replacement with 54-classroom baseline facility.		Not Started	0 %	Project not started.
Allenbrook Elementary School (23)	Offsite replacement at Freedom Driving Range; demolish existing facility.		Not Started	0 %	Not started
Ballantyne Ridge High School (17)	New 100 classroom high school to relieve South Mecklenburg, Ardrey Kell and Myers Park HS.	August 2024	Complete	82 %	The new Ballantyne Ridge High School project team continued coordinating the numerous trades on site. The mason continued with interior CMU and brick veneer installation throughout the building. Spray fireproofing continued on the fourth floor of the classroom wing and second floor media center space. Interior metal stud installations continued on the fourth floor in the classroom wing. Drywall installations continued in the classroom wing and fourth floor. The second and third floor drywall has been completed. The MEP trades are following the interior stud installation with in-wall and above ceiling rough-in. Current work on the site includes final grading, roadwork, site concrete and landscaping. Charlotte Water and Duke Power have provided permanent water and power to the building.
Berryhill School (23)	Offsite replacement; demolish building.		Not Started	0 %	Not started.
Beverly Woods Elementary School (23)	Onsite replacement with 45-classroom baseline school.		Not Started	0 %	Project not started.
Billingsville Montessori Upfit (23)	Repurpose Billingsville for relocated Montessori PK-6 program; demolish Chantilly. Cotswold to occupy Billingsville August 2025; Chantilly Montessori to occupy Billingsville 2027.	August 2025	Not Started	0 %	Billingsville Montessori Upfit project's design kick-off meeting is scheduled in March.

**Monthly Project Status**

2017 and 2023 Bond

February 2024

Summary

Project	Project Scope	** Occupy On	Design Phase	Construction Progress	Project Status
Briarwood Elementary School (17)	45-classroom replacement facility; replaces school built in 1956.	August 2021	Complete	100 %	Project is complete.
Bruns Avenue Elementary School (17)	New 45-classroom elementary school (K-5); replaces old school built in 1969.	August 2024	Complete	68 %	The Bruns Avenue Elementary School Replacement project team worked toward enclosing the remaining areas with window and storefront systems. Mechanical, electrical, and plumbing (MEP) trades continued with their overhead and in wall rough-in throughout the building in preparation for ceiling grid and wall closures. The mason continued with exterior brick veneer and finalizing interior CMU installations. The main electrical and mechanical room component installation progressed well over the last month with boilers, pumps, and main electrical panels. The project team continues to monitor the delayed delivery of the other two AHU's and is working on a contingency plan to limit impacts. Demolition of the old building and associated site work will commence once the new building is occupied
Career and Technology Education (17)	Phase I CTE upgrades at Olympic, Harding, Garinger and South Mecklenburg.	January 2022	Complete	100 %	Project is complete.
Charlotte-Mecklenburg Academy (17)	New EC school located on the old Statesville Elementary School site.	August 2019	Complete	100 %	Project is complete.
Cochrane Collegiate Academy/iMeck (23)	DESIGN ONLY - onsite replacement with 54-classroom baseline facility; relocate 9-12 iMeck program to Garinger High School.		Not Started	0 %	Not started
Collinswood Language Academy (17)	New 63-classroom K-8 facility on the site of the Smith Family Center.	August 2020	Complete	100 %	Project is complete.
Cornelius Elementary School (23)	Onsite replacement with 45-classroom baseline facility.		Not Started	0 %	Not started.

**Monthly Project Status**

2017 and 2023 Bond

February 2024

Summary

Project	Project Scope	** Occupy On	Design Phase	Construction Progress	Project Status
Cotswold Elementary School (23)	Onsite replacement, collapsing paired school into Billingsville for project duration.	August 2027	Pre-Design	0 %	Cotswold Elementary Replacement School due diligence activities in the field are complete and final reports under development. The design and CMS leadership meetings will be scheduled in the first quarter of 2024.
Coulwood STEM Academy (23)	Onsite replacement with 54-classroom baseline facility; STEM program to remain.		Not Started	0 %	Project not started.
Dilworth Latta (23)	Repurpose Dilworth for a TBD middle school magnet.	August 2027	Not Started	0 %	The Dilworth Latta project is scheduled to start design in 3rd quarter 2024.
E.E. Waddell (17)	Repurpose current E.E. Waddell to reopen as a magnet high school.	August 2023	Complete	100 %	Project is complete.
E.E. Waddell High School (23)	DESIGN ONLY - Building addition to support programs.		Not Started	0 %	Not started.
East Mecklenburg High School (17)	This project will provide for the design, and construction of a new 30 classroom building.	August 2022	Complete	100 %	Project is complete.
East Mecklenburg High School (23)	Final phases of work to include replacement of balance of campus buildings; comprehensive athletics package.		Not Started	0 %	Not started.
Esperanza Global Academy (17)	New 45-classroom elementary school to relieve Windsor, Winterfield, and Idlewild ES.	August 2023	Complete	100 %	The Esperanza Global Academy is in the project closeout and warranty phase.
First Ward Elementary School (23)	Renovate First Ward as full magnet 6-8.	August 2026	Schematic	0 %	The First Ward Arts Middle School Magnet project has completed schematic design phase. The design team conducted two CMS Leadership focus meetings to help address specific educational program requirements. The architect submitted the schematic design submittal. This document was reviewed by CMS and comments returned to the architect. The project has now progressed into the design development phase. Follow up CMS Leadership meetings will be in March.
Garinger High School (17)	Project includes the design and construction for renovations of 300 building and a new 16 classroom building.	January 2023	Complete	100 %	Project is complete.

**Monthly Project Status**

2017 and 2023 Bond

February 2024

Summary

Project	Project Scope	** Occupy On	Design Phase	Construction Progress	Project Status
Garinger High School (23)	Next phase of work to include new kitchen/cafeteria, specialty classrooms, gym and athletics; renovate and repurpose existing kitchen/cafeteria.		Not Started	0 %	Not started
Grove Park Elementary School (17)	New 45-classroom elementary school; relieves overcrowding at Hidden Valley, J.W. Grier, Newell.	August 2023	Complete	100 %	The Grove Park Elementary School is in the project closeout and warranty phase.
Harding High School (17)	Renovation of the kitchen, cafeteria, existing gym (aux) and the addition of a new gym.	August 2020	Complete	100 %	Project is complete.
Harding University High School (23)	Final phases of work to include comprehensive athletics package and balance of campus replacement.		Not Started	0 %	Not started.
Huntersville Elementary School (23)	Onsite replacement with 45-classroom baseline facility.		Not Started	0 %	Project not started.
J.T. Williams (23)	DESIGN ONLY - Final phase of work to support Alternative Education use.		Not Started	0 %	Not started
JT Williams (17)	Project includes building renovations to J.T. Williams Montessori magnet.	August 2023	Complete	100 %	The JT Williams Secondary Montessori is in the project closeout and warranty phase.
Knights View Elementary School	New 45-classroom elementary school to relieve Elon, Hawk Ridge, Polo.	August 2024	Complete	93 %	The New Knights View Elementary School (fka Elon, Hawk Ridge, Polo Relief) finish trades continued with casework, VCT flooring and marker/tack board throughout the building. The Ardrey Kell roadwork asphalt and striping have been completed leaving only the signalization to be completed. The striping and signage of Beau Riley Road was also completed. The long awaited air handler (unit five) components began arriving this month. The Recreation Center gym floor is being installed.
Lansdowne Elementary School (17)	New 45-classroom school; replaces old school built in 1959 and relieve crowding at Elizabeth Lane ES.	August 2022	Complete	100 %	Project is complete.
Lincoln Heights Elementary School (17)	Repurpose and reopen as magnet school.	August 2023	Complete	100 %	The Lincoln Heights Montessori School repurpose project is in the project closeout and warranty phase.

**Monthly Project Status**

2017 and 2023 Bond

February 2024

Summary

Project	Project Scope	** Occupy On	Design Phase	Construction Progress	Project Status
Marie G Davis Montessori Upfit (23)	Convert to 7-12 Montessori to replace use at J.T. Williams and expand program.		Schematic	0 %	Marie G. Davis Montessori Upfit due diligence activities continue to progress and the architect's schematic design submittal has been received and in review. CMS Leadership review of this submission will be issued in March.
Matthews Elementary School (23)	Replacement with 45-classroom baseline facility.		Not Started	0 %	Project not started.
Mint Hill Elementary School (17)	New 45-classroom elementary school; relieves crowding at Bain, Lebanon Road, Piney Grove.	August 2022	Complete	100 %	Project is complete.
Montclair Elementary School (17)	New 45-classroom replacement facility replacing school built in 1958.	August 2020	Complete	100 %	Project is complete.
Mountain Island Lake Academy (17)	K-8 Phase 2 - New gymnasium and specialty classrooms.	August 2023	Complete	100 %	The Mountain Island Lake Academy Gym/Classroom Addition project is in the project closeout and warranty phase.
New Middle School 1 South (23)	Baseline 54 CR Middle School facility to relieve Community House MS, Jay M. Robinson MS, and Rea Farms STEAM K-8.		Schematic	0 %	The New South Middle School 1 architect continues to collaborate with Capital Program Services, CMS Planning and Real Estate Department to develop the required rezoning submittal drawings. Currently six revisions have been developed and reviewed. Design development phase documents will issued to the CMS Leadership Team for review comments in the month of March.
New Middle School 2 North (23)	Baseline 54-classroom facility at Stumptown Road to relieve Bailey Road MS, Davidson K-8, and J.M. Alexander MS.		Not Started	0 %	Not started.
New Middle School 3 Southwest (23)	54-classroom baseline facility on Highway 160 to relieve Southwest and Kennedy (possible Qual Hollow) middle schools.		Not Started	0 %	Not started.
New Second Ward High School (23)	Full magnet high school on old Metro site; relocate program from Hawthorne site.		Pre-Schematic	0 %	The New Second Ward High School pre-design deliverable continues to progress and is due for CMS review in March.
North Academy of World Languages (17)	New 66 classroom K-8 Language Immersion facility located on the old J.M. Alexander Middle School site.	August 2021	Complete	100 %	Project is complete.

**Monthly Project Status**

2017 and 2023 Bond

February 2024

Summary

Project	Project Scope	** Occupy On	Design Phase	Construction Progress	Project Status
North Mecklenburg High School Replacement (23)	Onsite replacement of balance of campus and comprehensive athletics package.		Schematic	0 %	The North Mecklenburg High School Replacement project continues developing site plan schemes that coordinate with the Town of Huntersville planning and zoning ordinances. These various plans are being reviewed by CMS for final direction prior to presenting to the Town of Huntersville. The pre-schematic design deliverable was received and comments returned to the architect. Survey work is complete and provided to the Architect. Geo-technical investigations continue to progress.
Northwest School of the Arts (17)	Replace classroom buildings B&D and build classroom addition that supports program. 1st phase includes parking and U/G stormwater.	January 2025	Complete	78 %	The Northwest School of the Arts construction team continued with the removal of the existing parking lot in preparation for the new utility tie-ins. The Phase 1 scope includes an underground storm water detention system and new car parking lot in preparation for the new building in Phase 2.
Northwest School of the Arts (23)	Final Phase of work to include a new specialty classroom space and 9-12 conversion/expansion.	August 2026	Construction Documents	0 %	The Northwest School of the Arts Phase 2 design documents have been submitted to LUESA for review and approval of a building permit. The construction manager has finalized the bid manual, logistic plan and schedule and has issued the project for bid in March. Phase 2 scope includes a new administration, visual/performing arts building and campus renovations.
Palisades High School (17)	New 100 classroom high school; relieves crowding at Olympic High School.	August 2022	Complete	100 %	Project is complete.
Park Road Montessori (23)	Replace with 45-classroom school for Dilworth paired schools.	August 2026	Schematic	0 %	The designer for the New Park Road Elementary School project has delivered schematic design phase documents to CMS for review and comment. CMS Leadership review of these documents will be available for comments in March.

**Monthly Project Status**

2017 and 2023 Bond

February 2024

Summary

Project	Project Scope	** Occupy On	Design Phase	Construction Progress	Project Status
Sedgefield Montessori (23)	Convert for Montessori PK-6 program.	August 2024	Construction Documents	0 %	The Sedgefield Elementary School Montessori Upfit project scope includes the incorporation of life skills classrooms, security vestibule, general up fits/renovations to the main building, and site enhancements. Permit drawings are scheduled for permit review in April. Follow-up meetings with CMS leadership continue to be conducted to review and confirm the design direction and schedule to complete the work.
Shamrock Gardens Elementary School (17)	New 45-classroom replacement facility.	August 2022	Complete	100 %	Project is complete.
Sharon Elementary School (17)	Add 16 classroom building and increase capacity of cafeteria.	August 2021	Complete	100 %	Project is complete.
South Academy of International Languages (17)	New 71 classroom K-8 Language Immersion facility located on the old Nations Ford Elementary School site.	August 2021	Complete	100 %	Project is complete.
South Charlotte Middle School (23)	DESIGN ONLY - onsite replacement with 54-classroom baseline facility.		Not Started	0 %	Not started
South Mecklenburg High School (17)	Renovate/replace two classroom buildings built in 1958 to upgrade learning conditions.	January 2025	Complete	3 %	The South Mecklenburg High School construction team completed underground slab rough-in and poured the slab on grade. The structural steel framing was delivered and erection is ongoing. The decking for second floor also started. The new 19-classroom building will house JROTC and Arts.
South Mecklenburg High School Replacement (23)	Final phases of work, to include onsite replacement of balance of campus to +/- 100 CR baseline, comprehensive athletics package.		Schematic	0 %	The South Mecklenburg High School Replacement project continues to progress in the schematic design phase.
South Pine Academy (17)	New 45-classroom elementary school to relieve Nations Ford, Sterling, and Steele Creek.	August 2021	Complete	100 %	Project is complete.
Steele Creek Elementary School (23)	Onsite replacement with 45-classroom baseline facility.		Not Started	0 %	Not started.
University Park Arts (23)	Onsite replacement with 39-classroom baseline facility with arts specific spaces to support program.		Not Started	0 %	Not started.



**Monthly Project Status**

2017 and 2023 Bond

February 2024

Summary

Project	Project Scope	** Occupy On	Design Phase	Construction Progress	Project Status
Villa Heights Elementary School (23)	DESIGN ONLY - 45-classroom baseline school to be constructed on the Hawthorne site; demolish the existing Villa Heights.		Not Started	0 %	Not started.
West Charlotte High School (17)	New 100 classroom school to replace current facility built in 1954.	August 2022	Complete	100 %	The West Charlotte High School project is in the project closeout and warranty phase. Additional sidewalk work to provide connectivity is being designed for incorporation.
West Mecklenburg High School (17)	Provide new gymnasium, the existing gymnasium will become the auxilliary.	August 2021	Complete	100 %	Project is complete.
West Regional Athletic Complex (23)	DESIGN ONLY - New multi-sport regional athletic competition complex with gymnasium, natatorium, stadium, fields, ancillary spaces.		Not Started	0 %	Not started.
Wilson STEM Academy (23)	Onsite replacement with 54-classroom baseline facility.		Not Started	0 %	Project not started.

# MWSBE PARTICIPATION REPORT

# MWSBE Participation Commitments - Design and Construction

Report Date 3/5/2024

Charlotte-Mecklenburg Schools

3/5/2024 4:53:52 PM

2017 Bond

February 2024 Monthly Bond Report

Facility	Contract Amount	African American MBE\$	%	Other MBE \$	%	Total MBE \$	%	Other WBE \$	%	Other SBE \$	%	Total	%
<a href="#"><u>Ballantyne Ridge High School (17)</u></a>	\$134,808,918	\$3,115,551	2.31%	\$4,735,387	3.51%	\$7,850,938	5.82%	\$6,862,302	5.09%	\$10,083,760	7.48%	\$24,797,000	18.39%
<a href="#"><u>Briarwood Elementary School (17)</u></a>	\$28,327,548	\$4,038,457	14.26%	\$2,135,619	7.54%	\$6,174,076	21.80%	\$2,187,249	7.72%	\$187,102	0.66%	\$8,548,427	30.18%
<a href="#"><u>Bruns Avenue Elementary School (17)</u></a>	\$44,462,714	\$3,911,570	8.80%	\$3,697,429	8.32%	\$7,608,999	17.11%	\$8,565,908	19.27%	\$2,312,654	5.20%	\$18,487,560	41.58%
<a href="#"><u>Career and Technology Education (17)</u></a>	\$6,832,606	\$546,203	7.99%	\$452,980	6.63%	\$999,184	14.62%	\$392,157	5.74%	\$65,475	0.96%	\$1,456,815	21.32%
<a href="#"><u>Charlotte-Mecklenburg Academy (17)</u></a>	\$16,883,930	\$198,536	1.18%	\$1,031,692	6.11%	\$1,230,228	7.29%	\$928,655	5.50%	\$13,200	0.08%	\$2,172,083	12.86%
<a href="#"><u>Collinswood Language Academy (17)</u></a>	\$38,527,704	\$649,307	1.69%	\$1,613,104	4.19%	\$2,262,411	5.87%	\$11,363,565	29.49%	\$8,328	0.02%	\$13,634,304	35.39%
<a href="#"><u>E.E. Waddell (17)</u></a>	\$2,163,815	\$53,893	2.49%	\$0	0.00%	\$53,893	2.49%	\$69,124	3.19%	\$0	0.00%	\$123,017	5.69%
<a href="#"><u>East Mecklenburg High School (17)</u></a>	\$12,642,198	\$603,811	4.78%	\$532,460	4.21%	\$1,136,271	8.99%	\$490,364	3.88%	\$681,075	5.39%	\$2,307,710	18.25%
<a href="#"><u>Esperanza Global Academy (17)</u></a>	\$39,216,621	\$8,296,515	21.16%	\$4,662,363	11.89%	\$12,958,878	33.04%	\$24,143,175	61.56%	\$1,512,572	3.86%	\$38,614,625	98.46%
<a href="#"><u>Garinger High School (17)</u></a>	\$3,106,941	\$98,773	3.18%	\$291,746	9.39%	\$390,520	12.57%	\$390,676	12.57%	\$251,932	8.11%	\$1,033,127	33.25%
<a href="#"><u>Grove Park Elementary School (17)</u></a>	\$38,660,480	\$4,897,634	12.67%	\$5,166,568	13.36%	\$10,064,203	26.03%	\$2,302,300	5.96%	\$49,132	0.13%	\$12,415,635	32.11%
<a href="#"><u>Harding High School (17)</u></a>	\$13,015,986	\$1,504,505	11.56%	\$309,667	2.38%	\$1,814,172	13.94%	\$4,050,417	31.12%	\$36,861	0.28%	\$5,901,449	45.34%
<a href="#"><u>JT Williams (17)</u></a>	\$15,473,785	\$738,860	4.77%	\$379,844	2.45%	\$1,118,704	7.23%	\$3,832,211	24.77%	\$51,800	0.33%	\$5,002,716	32.33%
<a href="#"><u>Lansdowne Elementary School (17)</u></a>	\$30,736,689	\$2,809,680	9.14%	\$877,274	2.85%	\$3,686,954	12.00%	\$2,266,647	7.37%	\$222,210	0.72%	\$6,175,811	20.09%
<a href="#"><u>Lincoln Heights Elementary School (17)</u></a>	\$2,800,865	\$318,959	11.39%	\$18,800	0.67%	\$337,759	12.06%	\$64,894	2.32%	\$73,077	2.61%	\$475,730	16.99%
<a href="#"><u>Mint Hill Elementary School (17)</u></a>	\$25,946,007	\$5,223,675	20.13%	\$17,791,909	68.57%	\$23,015,584	88.71%	\$1,192,408	4.60%	\$308,370	1.19%	\$24,516,362	94.49%
<a href="#"><u>Montclair Elementary School (17)</u></a>	\$26,093,784	\$3,593,852	13.77%	\$2,341,048	8.97%	\$5,934,900	22.74%	\$5,775,745	22.13%	\$493,707	1.89%	\$12,204,352	46.77%
<a href="#"><u>Mountain Island Lake Academy (17)</u></a>	\$12,203,059	\$153,353	1.26%	\$750,124	6.15%	\$903,478	7.40%	\$927,916	7.60%	\$15,300	0.13%	\$1,846,694	15.13%
<a href="#"><u>New Elementary School (Elon, Hawk R)</u></a>	\$45,370,107	\$5,617,776	12.38%	\$1,768,064	3.90%	\$7,385,840	16.28%	\$10,847,184	23.91%	\$1,972,519	4.35%	\$20,205,543	44.53%
<a href="#"><u>North Academy of World Languages (</u></a>	\$38,354,285	\$1,770,068	4.62%	\$1,575,864	4.11%	\$3,345,931	8.72%	\$3,473,149	9.06%	\$436,793	1.14%	\$7,255,873	18.92%
<a href="#"><u>Northwest School of the Arts (17)</u></a>	\$9,006,565	\$0	0.00%	\$316,650	3.52%	\$316,650	3.52%	\$125,965	1.40%	\$0	0.00%	\$442,615	4.91%
<a href="#"><u>Palisades High School (17)</u></a>	\$97,204,662	\$13,482,757	13.87%	\$7,641,104	7.86%	\$21,123,862	21.73%	\$8,317,153	8.56%	\$7,698,589	7.92%	\$37,139,603	38.21%
<a href="#"><u>Shamrock Gardens Elementary School</u></a>	\$27,133,018	\$2,478,054	9.13%	\$1,636,383	6.03%	\$4,114,438	15.16%	\$21,128,435	77.87%	\$259,554	0.96%	\$25,502,427	93.99%
<a href="#"><u>Sharon Elementary School (17)</u></a>	\$8,534,491	\$326,844	3.83%	\$283,497	3.32%	\$610,341	7.15%	\$926,873	10.86%	\$217,984	2.55%	\$1,755,197	20.57%

Facility	Contract Amount	African American MBE\$	%	Other MBE \$	%	Total MBE \$	%	Other WBE \$	%	Other SBE \$	%	Total	%
<u>South Academy of International Langu</u>	\$37,153,679	\$6,023,142	16.21%	\$2,431,071	6.54%	\$8,454,213	22.75%	\$10,945,346	29.46%	\$313,999	0.85%	\$19,713,558	53.06%
<u>South Mecklenburg High School (17)</u>	\$15,574,341	\$420,088	2.70%	\$1,105,960	7.10%	\$1,526,048	9.80%	\$179,816	1.15%	\$0	0.00%	\$1,705,864	10.95%
<u>South Pine Academy (17)</u>	\$26,196,854	\$916,165	3.50%	\$19,052,520	72.73%	\$19,968,685	76.23%	\$4,342,256	16.58%	\$237,754	0.91%	\$24,548,695	93.71%
<u>West Charlotte High School (17)</u>	\$95,332,583	\$14,357,815	15.06%	\$5,218,058	5.47%	\$19,575,873	20.53%	\$65,599,651	68.81%	\$3,728,348	3.91%	\$88,903,872	93.26%
<u>West Mecklenburg High School (17)</u>	\$9,810,566	\$283,809	2.89%	\$509,403	5.19%	\$793,212	8.09%	\$1,255,006	12.79%	\$1,054,146	10.75%	\$3,102,365	31.62%
<b>Grandtotal</b>	<b>\$901,574,801</b>	<b>\$86,429,652</b>	<b>9.59%</b>	<b>\$88,326,591</b>	<b>9.80%</b>	<b>\$174,756,243</b>	<b>19.38%</b>	<b>\$202,946,545</b>	<b>22.51%</b>	<b>\$32,286,240</b>	<b>3.58%</b>	<b>\$409,989,028</b>	<b>45.47%</b>

# MWSBE Participation Commitments - Design and Construction

Charlotte-Mecklenburg Schools  
2023 Bond

Report Date 3/5/2024

3/5/2024 5:07:59 PM

February 2024 Monthly Bond Report

Facility	Contract Amount	African American MBE\$	%	Other MBE \$	%	Total MBE \$	%	Other WBE \$	%	Other SBE \$	%	Total	%
<u>Cotswold ES/Billingsville (23)</u>	\$3,269,275	\$46,700	1.43%	\$72,200	2.21%	\$118,900	3.64%	\$82,050	2.51%	\$0	0.00%	\$200,950	6.15%
<u>Marie G Davis Montessori Upfit (23)</u>	\$404,190	\$0	0.00%	\$15,000	3.71%	\$15,000	3.71%	\$26,100	6.46%	\$0	0.00%	\$41,100	10.17%
<u>New Second Ward High School (23)</u>	\$7,967,000	\$0	0.00%	\$50,000	0.63%	\$50,000	0.63%	\$742,000	9.31%	\$650,000	8.16%	\$1,442,000	18.10%
<u>New South Middle School 1 (23)</u>	\$3,622,374	\$17,000	0.47%	\$106,000	2.93%	\$123,000	3.40%	\$100,010	2.76%	\$0	0.00%	\$223,010	6.16%
<u>North Mecklenburg High School Repla</u>	\$9,288,438	\$0	0.00%	\$575,100	6.19%	\$575,100	6.19%	\$31,020	0.33%	\$40,000	0.43%	\$646,120	6.96%
<u>Northwest School of the Arts/First Wa</u>	\$1,187,145	\$20,000	1.68%	\$122,400	10.31%	\$142,400	12.00%	\$30,600	2.58%	\$0	0.00%	\$173,000	14.57%
<u>Park Road ES/Dilworth Latta/Sedgiefie</u>	\$3,423,856	\$162,500	4.75%	\$92,450	2.70%	\$254,950	7.45%	\$211,196	6.17%	\$0	0.00%	\$466,146	13.61%
<u>South Mecklenburg High School Repla</u>	\$6,064,970	\$15,000	0.25%	\$95,000	1.57%	\$110,000	1.81%	\$423,750	6.99%	\$38,000	0.63%	\$571,750	9.43%
<b>Grandtotal</b>	\$35,227,247	\$261,200	0.74%	\$1,128,150	3.20%	\$1,389,350	3.94%	\$1,646,726	4.67%	\$728,000	2.07%	\$3,764,076	10.69%

# MONTHLY PROJECT PHOTOS



Knights View Elementary School



Knights View Elementary School



# PROJECT PROGRESS PHOTOS



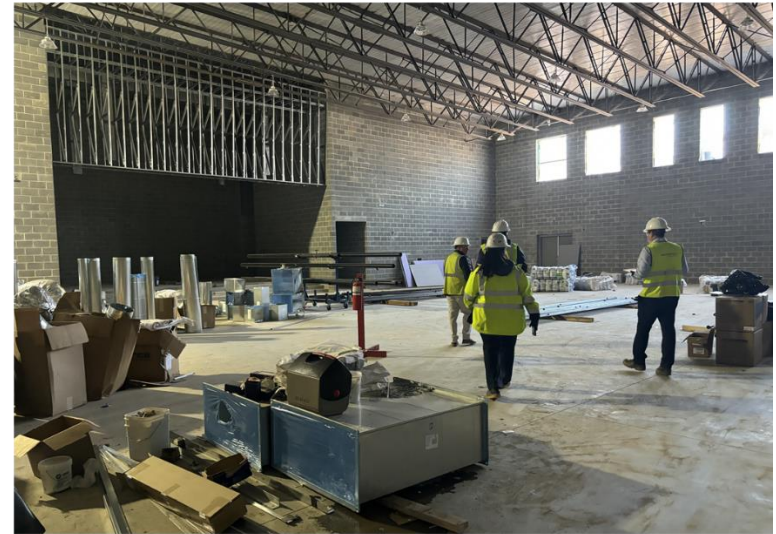
Ballantyne Ridge High School



Ballantyne Ridge High School



Bruns Elementary School Replacement



Bruns Elementary School Replacement



Northwest School of the Arts – Phase 1



Northwest School of the Arts – Phase 1



South Mecklenburg HS - Addition



South Mecklenburg HS - Addition



# PROJECT CONTROLS

**CHARLOTTE-MECKLENBURG BOARD OF EDUCATION  
2017 BOND SERIES-CAPITAL IMPROVEMENT PROGRAMS  
BUDGET STATUS REPORT**

	Original Project Budget	Current Project Budget	Committed Amount	Approved Change Orders	Total Committed	Pending Commitments	To Be Committed	Prev Paid To Date	Paid To Date	Balance To Complete	Monthly Expenditure
	(A)	(B)	(C)	(D)	(E)=(C+D)	(F)	(G)=(B-E-F)	(H)	(I)	(J)=(B-I)	(K)=(I-H)
<b>A. REPLACEMENT &amp; RENOVATIONS</b>											
1 Briarwood Elementary *	\$29,091,619	\$31,243,066	\$4,730,737	\$26,410,339	\$31,141,076	\$0	\$101,990	\$31,136,111	\$31,136,111	\$106,956	\$0
2 Bruns Academy Replacement	\$34,207,808	\$48,859,580	\$5,565,141	\$42,544,008	\$48,109,149	\$6,061	\$744,370	\$22,085,567	\$24,566,577	\$24,293,003	\$2,481,010
3 Career & Technology Education Upgrades	\$10,101,734	\$6,984,007	\$3,665,419	\$3,318,588	\$6,984,007	\$0	\$0	\$6,984,007	\$6,984,007	\$0	\$0
4 Collinswood K-8 *	\$44,172,540	\$41,401,384	\$4,916,632	\$36,484,752	\$41,401,384	\$0	\$0	\$41,401,384	\$41,401,384	\$0	\$0
5 East Mecklenburg HS	\$12,771,594	\$10,231,911	(\$1,659,510)	\$11,823,832	\$10,164,322	\$0	\$67,590	\$10,141,268	\$10,141,268	\$90,643	\$0
6 Garinger HS	\$13,936,979	\$5,236,979	\$666,639	\$3,259,238	\$3,925,877	\$0	\$1,039,656	\$3,919,955	\$3,920,477	\$1,316,502	\$521
7 Harding University High *	\$18,330,263	\$13,747,878	\$2,045,267	\$11,702,610	\$13,747,877	\$0	\$0	\$13,747,877	\$13,747,877	\$0	\$0
8 Charlotte-Mecklenburg Academy (FKA -EC Specialty	\$18,957,960	\$17,699,220	\$2,175,504	\$15,523,717	\$17,699,220	\$0	\$0	\$17,699,220	\$17,699,220	\$0	\$0
9 Lansdowne Elementary	\$29,391,270	\$33,554,188	\$3,924,822	\$29,426,290	\$33,351,113	\$41,075	\$162,001	\$32,711,228	\$32,711,228	\$842,960	\$0
10 Lincoln Heights Elementary	\$3,740,478	\$4,588,675	\$2,823,274	\$806,531	\$3,629,805	\$17,000	\$941,870	\$3,029,451	\$3,066,341	\$1,522,334	\$36,889
11 Montclair Elementary Replacement *	\$28,559,390	\$28,200,634	\$2,426,761	\$25,773,873	\$28,200,634	\$0	\$0	\$28,200,634	\$28,200,634	\$0	\$0
12 Mountain Island k-8	\$9,218,439	\$13,239,686	\$1,658,401	\$11,418,864	\$13,077,265	\$12,000	\$150,421	\$12,309,367	\$12,418,613	\$821,073	\$109,246
13 Northwest School of the Arts	\$17,632,202	\$12,167,000	\$5,228,856	\$4,774,039	\$10,002,894	\$2,000	\$2,162,106	\$5,966,781	\$6,353,149	\$5,813,851	\$386,368
14 Shamrock Gardens Elementary *	\$29,890,351	\$30,084,692	\$3,422,159	\$26,415,186	\$29,837,345	\$0	\$247,347	\$29,757,027	\$29,757,027	\$327,665	\$0
15 Sharon Elementary	\$7,706,528	\$9,125,862	\$1,430,033	\$7,675,679	\$9,105,712	\$0	\$20,150	\$9,088,894	\$9,088,894	\$36,968	\$0
16 South Mecklenburg HS	\$13,352,143	\$17,322,927	\$2,057,095	\$14,224,281	\$16,281,376	\$0	\$1,041,551	\$3,134,184	\$3,882,665	\$13,440,262	\$748,481
17 E.E. Waddell Magnet HS	\$4,571,709	\$5,137,367	\$2,945,755	\$356,383	\$3,302,138	\$0	\$1,835,229	\$3,029,183	\$3,029,183	\$2,108,184	\$0
18 West Charlotte HS Replacement	\$109,977,166	\$104,413,163	\$11,780,572	\$91,565,521	\$103,346,093	\$90,900	\$976,170	\$101,874,597	\$102,179,524	\$2,233,639	\$304,927
19 West Mecklenburg HS	\$11,065,440	\$6,260,654	(\$2,370,464)	\$8,631,118	\$6,260,654	\$0	\$0	\$6,260,654	\$6,260,654	\$0	\$0
20 John Taylor Williams	\$13,964,339	\$17,032,600	\$3,533,509	\$12,452,077	\$15,985,586	\$0	\$1,047,014	\$15,549,892	\$15,780,098	\$1,252,502	\$230,206
<b>Total Replacement &amp; Renovations</b>	<b>\$460,639,952</b>	<b>\$456,531,473</b>	<b>\$60,966,602</b>	<b>\$384,586,926</b>	<b>\$445,553,528</b>	<b>\$169,035</b>	<b>\$10,537,463</b>	<b>\$398,027,281</b>	<b>\$402,324,930</b>	<b>\$54,206,543</b>	<b>\$4,297,649</b>
<b>B. RESPONSE TO ENROLLMENT GROWTH</b>											
1 South Academy of International Languages	\$45,359,367	\$40,669,909	\$5,969,503	\$34,700,138	\$40,669,641	\$0	\$268	\$40,603,147	\$40,603,147	\$66,762	\$0
2 North Academy of World Languages (FKA - New K-8	\$45,359,367	\$41,742,062	\$6,024,166	\$35,717,896	\$41,742,062	\$0	\$0	\$41,742,062	\$41,742,062	\$0	\$0
3 South Pine Academy (FKA - New ES Nations Ford, S	\$29,173,829	\$30,477,421	\$6,883,836	\$23,593,585	\$30,477,421	\$0	\$0	\$30,477,421	\$30,477,421	\$0	\$0
4 Mint Hill Elementary School	\$29,988,332	\$29,480,274	\$3,296,439	\$25,950,837	\$29,247,276	\$0	\$232,998	\$29,025,246	\$29,025,246	\$455,028	\$0
5 Esperanza Global Academy (FKA New ES - Windsor	\$30,422,230	\$45,297,022	\$13,120,482	\$31,552,524	\$44,673,007	\$69,046	\$554,969	\$42,318,661	\$42,849,407	\$2,447,615	\$530,747
6 New Elementary School - Elon/Hawk Ridge Relief *	\$30,426,712	\$60,641,761	\$16,335,567	\$43,610,239	\$59,945,806	\$197,749	\$498,205	\$48,585,787	\$49,999,362	\$10,642,399	\$1,413,575
7 Grove Park Elementary (FKA New ES - Hidden Valle	\$30,518,345	\$44,079,387	\$6,309,511	\$36,697,109	\$43,006,620	\$47,000	\$1,025,767	\$40,585,791	\$40,616,758	\$3,462,629	\$30,968
8 Palisades High School	\$109,908,793	\$107,592,534	\$10,849,954	\$95,390,688	\$106,240,642	\$20,042	\$1,331,849	\$105,841,748	\$105,808,313	\$1,784,221	(\$33,435)
9 Ballantyne Ridge High School (FKA New HS South)	\$110,287,621	\$148,962,116	\$15,189,290	\$130,811,268	\$146,000,558	\$699,773	\$2,261,784	\$95,422,603	\$99,304,153	\$49,657,963	\$3,881,550
<b>Total Response to Enrollment Growth</b>	<b>\$461,444,596</b>	<b>\$548,942,486</b>	<b>\$83,978,748</b>	<b>\$458,024,285</b>	<b>\$542,003,033</b>	<b>\$1,033,611</b>	<b>\$5,905,842</b>	<b>\$474,602,465</b>	<b>\$480,425,870</b>	<b>\$68,516,616</b>	<b>\$5,823,405</b>
<b>C. CONTINGENCY</b>											
	\$0	\$0	\$0	\$0	\$0	\$0	\$0	\$0	\$0	\$0	\$0
<b>Total Contingency</b>	<b>\$0</b>	<b>\$0</b>	<b>\$0</b>	<b>\$0</b>	<b>\$0</b>	<b>\$0</b>	<b>\$0</b>	<b>\$0</b>	<b>\$0</b>	<b>\$0</b>	<b>\$0</b>

**CHARLOTTE-MECKLENBURG BOARD OF EDUCATION  
2017 BOND SERIES-CAPITAL IMPROVEMENT PROGRAMS  
BUDGET STATUS REPORT**

	Original Project Budget	Current Project Budget	Committed Amount	Approved Change Orders	Total Committed	Pending Commitments	To Be Committed	Prev Paid To Date	Paid To Date	Balance To Complete	Monthly Expenditure
	(A)	(B)	(C)	(D)	(E)=C+D	(F)	(G)=(B-E-F)	(H)	(I)	(J)=(B-I)	(K)=(I-H)
<b>TOTAL LOCAL BOND PROGRAM</b>	<b>\$922,084,548</b>	<b>\$1,005,473,960</b>	<b>\$144,945,350</b>	<b>\$842,611,211</b>	<b>\$987,556,561</b>	<b>\$1,202,646</b>	<b>\$16,443,305</b>	<b>\$872,629,746</b>	<b>\$882,750,800</b>	<b>\$122,723,159</b>	<b>\$10,121,054</b>

Original project estimated costs approved by the Board Of Education on July 25, 2017 approved by the voters of Mecklenburg County on November 7, 2017.

\*Project included in \$33.2M early funding approved by Board Of Education on August 9, 2016 and Mecklenburg Board of County Commissioners on September 6, 2016. On February 19, 2019 an additional \$8M was approved for New Elementary School - Elon/Hawk Ridge Relief site.

\*Current Budget includes an additional \$89.2M to fund increase land and construction costs. The additional funds were approved by the Board of County Commissioners on June 16, 2020.

The New Elementary School - Elon/Hawk Ridge Relief current Budget includes 6.8M for Park and Recreation Project.

Bruns Academy Replacement current budget includes \$1.5M for Park and Recreation Project.

Current Program Budget reflects a reclass of \$7.4M in expenditures to 2007 Bond Program and \$14.4M in expenditures to 2013 Bond Program.

**CHARLOTTE-MECKLENBURG BOARD OF EDUCATION  
2023 BOND SERIES-CAPITAL IMPROVEMENT PROGRAMS  
BUDGET STATUS REPORT**

	Original Project Budget	Current Project Budget	Committed Amount	Approved Change Orders	Total Committed	Pending Commitments	To Be Committed	Prev Paid To Date	Paid To Date	Balance To Complete	Monthly Expenditure
	(A)	(B)	(C)	(D)	(E)=C+D	(F)	(G)=(B-E-F)	(H)	(I)	(J)=(B-I)	(K)=(I-H)
<b><u>A. REPLACEMENT &amp; RENOVATIONS</u></b>											
1 Albemarle Road MS	\$97,732,036	\$97,732,036	\$0	\$0	\$0	\$0	\$97,732,036	\$0	\$0	\$97,732,036	\$0
2 Allenbrook	\$74,244,220	\$74,244,220	\$0	\$0	\$0	\$0	\$74,244,220	\$0	\$0	\$74,244,220	\$0
3 Berryhill School	\$104,286,451	\$104,286,451	\$0	\$0	\$0	\$0	\$104,286,451	\$0	\$0	\$104,286,451	\$0
4 Beverly Woods	\$71,237,700	\$71,237,700	\$0	\$0	\$0	\$0	\$71,237,700	\$0	\$0	\$71,237,700	\$0
5 Cochrane Collegiate Academy/iMeck	\$7,506,657	\$7,506,657	\$0	\$0	\$0	\$0	\$7,506,657	\$0	\$0	\$7,506,657	\$0
6 Cornelius	\$76,471,997	\$76,471,997	\$0	\$0	\$0	\$0	\$76,471,997	\$0	\$0	\$76,471,997	\$0
7 Cotswold ES/Billingsville	\$80,555,856	\$80,555,856	\$6,612,343	\$0	\$6,612,343	\$0	\$73,943,513	\$0	\$0	\$80,555,856	\$0
8 Coulwood STEM Academy	\$92,706,982	\$92,706,982	\$0	\$0	\$0	\$0	\$92,706,982	\$0	\$0	\$92,706,982	\$0
9 E.E. Waddell	\$1,563,348	\$1,563,348	\$0	\$0	\$0	\$0	\$1,563,348	\$0	\$0	\$1,563,348	\$0
10 East Mecklenburg	\$201,339,353	\$201,339,353	\$0	\$0	\$0	\$0	\$201,339,353	\$0	\$0	\$201,339,353	\$0
11 Garinger	\$54,905,692	\$54,905,692	\$0	\$0	\$0	\$0	\$54,905,692	\$0	\$0	\$54,905,692	\$0
12 Harding University	\$202,879,499	\$202,879,499	\$0	\$0	\$0	\$0	\$202,879,499	\$0	\$0	\$202,879,499	\$0
13 Huntersville	\$66,235,904	\$66,235,904	\$0	\$0	\$0	\$0	\$66,235,904	\$0	\$0	\$66,235,904	\$0
14 J.T. Williams	\$1,647,752	\$1,647,752	\$0	\$0	\$0	\$0	\$1,647,752	\$0	\$0	\$1,647,752	\$0
15 Marie G Davis Montessori Upfit	\$9,174,783	\$9,174,783	\$852,593	\$0	\$852,593	\$0	\$8,322,190	\$0	\$0	\$9,174,783	\$0
16 Matthews	\$79,874,929	\$79,874,929	\$0	\$0	\$0	\$0	\$79,874,929	\$0	\$0	\$79,874,929	\$0
17 North Mecklenburg High School Replacement	\$228,464,171	\$228,464,171	\$18,878,169	\$0	\$18,878,169	\$0	\$209,586,002	\$376,559	\$442,269	\$228,021,902	\$65,709
18 Northwest School of the Arts/First Ward	\$93,654,147	\$93,654,147	\$5,094,972	\$0	\$5,094,972	\$3,700	\$88,555,475	\$0	\$148,300	\$93,505,847	\$148,300
19 Park Road ES/Dilworth Latta/Sedgefield	\$89,491,970	\$89,491,970	\$10,046,448	\$224,077	\$10,270,525	\$0	\$79,221,445	\$225,178	\$586,430	\$88,905,540	\$361,252
20 South Charlotte	\$7,741,099	\$7,741,099	\$0	\$0	\$0	\$0	\$7,741,099	\$0	\$0	\$7,741,099	\$0
21 South Mecklenburg High School Replacement	\$127,909,253	\$127,909,253	\$11,373,204	\$0	\$11,373,204	\$12,500	\$116,523,549	\$268,461	\$268,461	\$127,640,792	\$0
22 Steele Creek	\$80,830,528	\$80,830,528	\$0	\$0	\$0	\$0	\$80,830,528	\$0	\$0	\$80,830,528	\$0
23 University Park Arts	\$73,119,088	\$73,119,088	\$0	\$0	\$0	\$0	\$73,119,088	\$0	\$0	\$73,119,088	\$0
24 Villa Heights @ Hawthorne	\$6,247,871	\$6,247,871	\$0	\$0	\$0	\$0	\$6,247,871	\$0	\$0	\$6,247,871	\$0
25 West Regional Athletic Complex	\$8,999,792	\$8,999,792	\$0	\$0	\$0	\$0	\$8,999,792	\$0	\$0	\$8,999,792	\$0
26 Wilson STEM Academy	\$92,471,565	\$92,471,565	\$0	\$0	\$0	\$0	\$92,471,565	\$0	\$0	\$92,471,565	\$0
<b>Total Replacement &amp; Renovations</b>	<b>\$2,031,292,643</b>	<b>\$2,031,292,643</b>	<b>\$52,857,728</b>	<b>\$224,077</b>	<b>\$53,081,805</b>	<b>\$16,200</b>	<b>\$1,978,194,638</b>	<b>\$870,199</b>	<b>\$1,445,459</b>	<b>\$2,029,847,184</b>	<b>\$575,261</b>
<b><u>B. RESPONSE TO ENROLLMENT GROWTH</u></b>											
1 New MS #2 North	\$92,371,482	\$92,371,482	\$0	\$0	\$0	\$0	\$92,371,482	\$0	\$0	\$92,371,482	\$0
2 New MS #3 Southwest	\$98,436,153	\$98,436,153	\$0	\$0	\$0	\$0	\$98,436,153	\$0	\$0	\$98,436,153	\$0
3 New Second Ward High School	\$176,810,460	\$176,810,460	\$15,414,494	\$0	\$15,414,494	\$0	\$161,395,966	\$0	\$0	\$176,810,460	\$0
4 New South MS #1	\$101,089,262	\$101,089,262	\$7,820,182	\$0	\$7,820,182	\$0	\$93,269,081	\$656,490	\$859,134	\$100,230,128	\$202,644
<b>Total Response to Enrollment Growth</b>	<b>\$468,707,357</b>	<b>\$468,707,357</b>	<b>\$23,234,676</b>	<b>\$0</b>	<b>\$23,234,676</b>	<b>\$0</b>	<b>\$445,472,682</b>	<b>\$656,490</b>	<b>\$859,134</b>	<b>\$467,848,223</b>	<b>\$202,644</b>
	<b>\$2,500,000,000</b>	<b>\$2,500,000,000</b>	<b>\$76,092,404</b>	<b>\$224,077</b>	<b>\$76,316,481</b>	<b>\$16,200</b>	<b>\$2,423,667,319</b>	<b>\$1,526,689</b>	<b>\$2,304,593</b>	<b>\$2,497,695,407</b>	<b>\$777,905</b>

Original Budget Projects were approved by the Board of County Commissioners on June 6, 2023 and by the voters of Mecklenburg County on November 7, 2023.

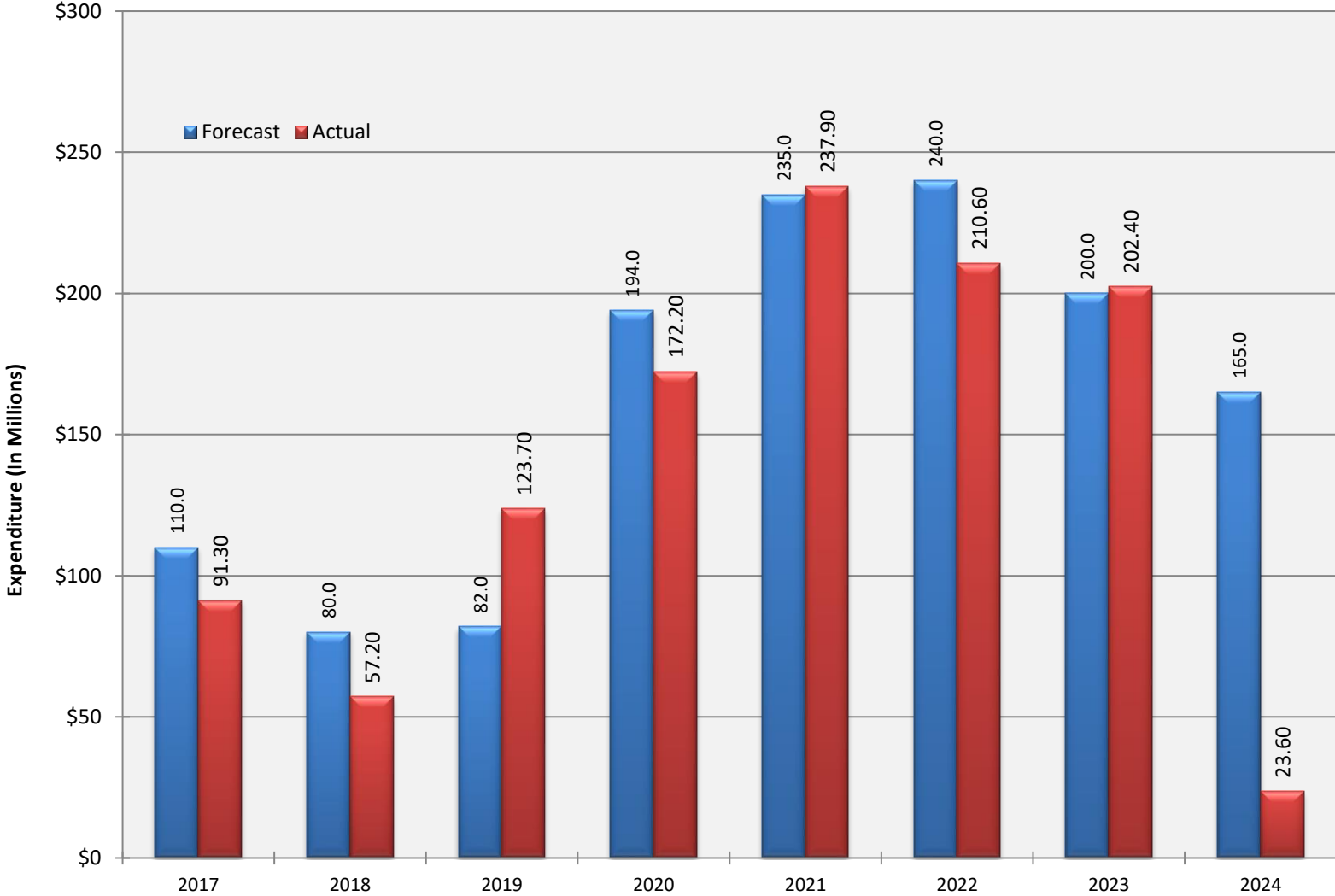
**Charlotte-Mecklenburg Board of Education**  
**Approved Construction or Repair Change Orders\***  
**Reporting Period: February 2024**

Funding Source	Project Name	Contractor	Description	Change Order Amount	Revised Contract Value
2017 Bond	JT Williams (17)	New Atlantic Contracting, Inc.	Provide Masonry helical screw anchor; Duke Energy electric service cost; Remove Dugout benches, fencing, and concrete ; Remove backstop for Dugout; Stormwater Piping Improvements; Replace existing hose bibb; Replace sidewalk; Fire proofing at Chase Walls ; Provide Theatrical Lighting ; Reconcile unused General Trades; Demolish (4) chase walls; Replace and Add Signage; Access Control System Repair; Sidewalk rework; Cabling for Helios system Add mulch; Reconcile remaining unused Subcontract Allowance; Shared Savings; Remove X Bracing; Extend Classroom Divider Walls; Close Existing Gap at Top Exterior Walls; Abate pipe insulation; Provide thickset tile mud bed; Upgrade existing electrical; Steel decking repairs; Install sanitary sewer tap and piping; Delete door opening Cut floor slab ; Add sidewalks and handrails ; Deleted soffits/ceilings; Modify Parking Lot scope;	\$4,285.68	\$12,953,524.91

\* Not previously presented to the Board of Education for Approval (less than \$90,000)

# EXPENDITURE SUMMARY

## Forecast Expenditure vs. Actual 2017 - 2024



# GLOSSARY

# Glossary

---

---

- **Project Management** – This section includes updates from our project managers and describes the currently active construction projects. This includes from Board of Education award thru final completion.
- **Design and Bidding** – This section contains updates from our design managers on the projects currently in the design phase. This phase from design award to Board of Education award of construction.
- **Controls** – Section includes misc. updates from controls group including expenditures, related Board of Education awards during the reporting period, cash flow information. This section covers all projects from approved bond through final expenditures and bond close with the county.
- **MWSBE** – Contains updates from the Assistant Director, Supplier Diversity and team, including current activity and summaries of the participation by MWSBE providers on our program.
- **Bond Progress Summary** – Provides a summary of bond financials including bond value, committed/pending amounts, paid to date, expended this month.
- **Project Procurement Dates** - Next 90 Days major project bid activity.
- **Mobile Swing Space Utilization** – Includes a summary of program related swing space currently in use and the schedule of use.
- **Bond Summary Schedule** – Current program summary schedule including planned design, construction and FF&E. These activities are fed from detailed schedules and are fine-tuned as project information is available.
- **Project Contractor Teams**; Provides summary of turnover dates for completed/closed projects since 2010 including architects/designers and contractors.
- **School Site Location Maps** – General location of bond projects (2017) by type.
- **Project Status Report** – This section of the report provides a summary of the bond project scope, current estimate (all sources), planned occupancy/actual occupancy date. It also provides a current status of the design phase, construction progress and a brief update. The report currently includes 2013 and 2017 bond projects that have or will be completed after to August 2016.
- **MWSBE Participation Report** – The MWSBE report provides a summary of the participation on the 2017 & 2023 Bond funded projects.
- **Project Progress Photos** – Includes photos of active construction projects.
- **Budget Summary Reports** – These reports are by funding source and summarize financial activity to date on the projects. This includes original and current project estimates, committed values, amounts paid to date, balances and monthly expenditures.
- **Change Orders < \$90,000** – This month's approved construction or repair change orders < \$90,000.
- **Expenditure Summary** – Provides a summary of Bond Expenditures by calendar year.